

Mississippi River Commission Public Meeting

Friday, March 30, 2012

Colonel Edward R. Fleming
Commander, New Orleans District



US Army Corps of Engineers
BUILDING STRONG.



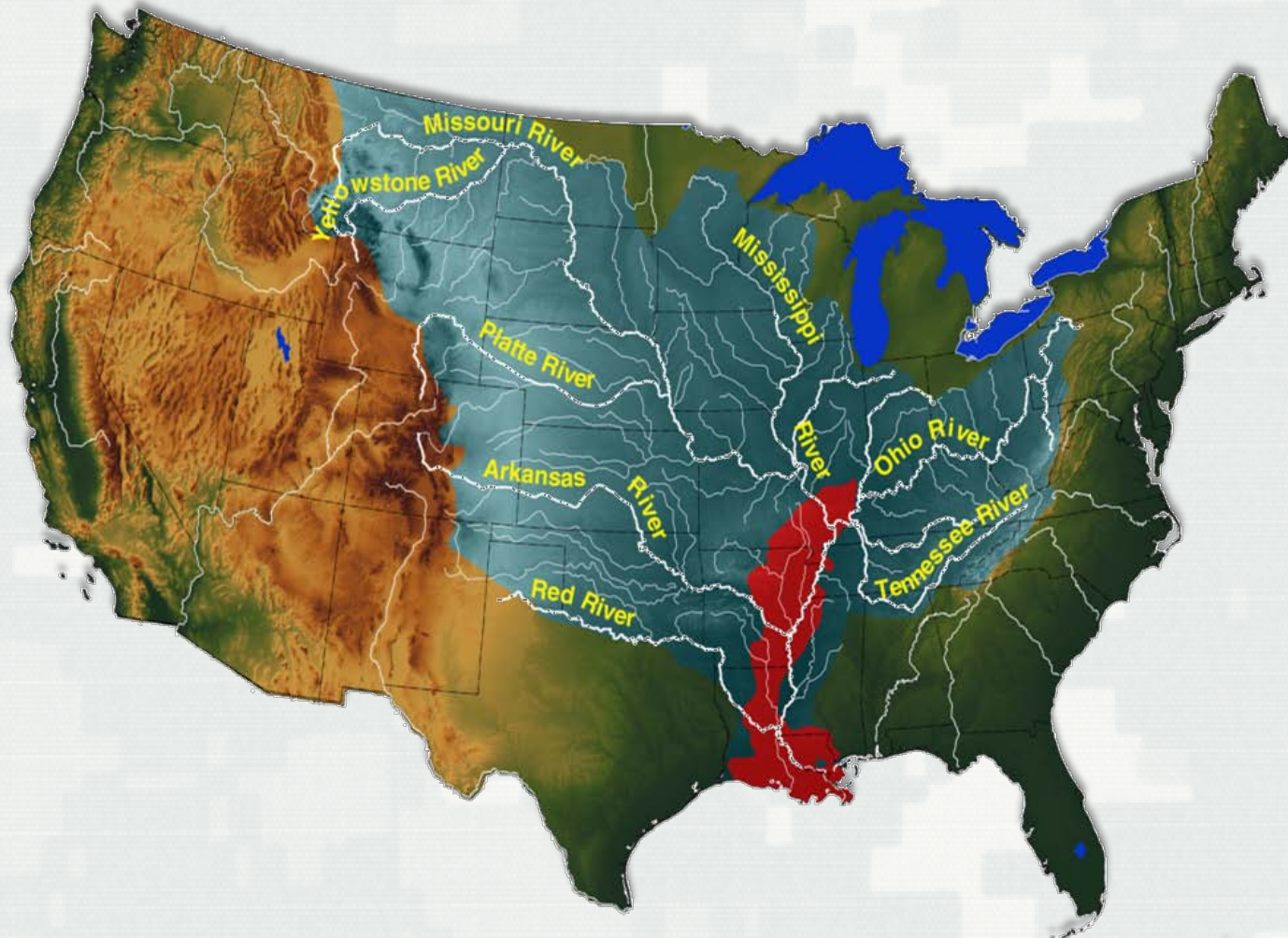
Agenda

- Operation Watershed
- Ongoing Studies/Progress
- Hurricane and Storm Damage Risk Reduction System



Operation Watershed

Mississippi River Flood of 2011



BUILDING STRONG®

New Orleans District Operation Watershed Repair Efforts

Project Type	# of Projects	Funding per Project Type
Channel Improvement	14	\$74.3 million
Dredging	5	\$155.3 million
Levee / Structure Repairs / Construction	13	\$257.7 million
Operations and Maintenance (Structures)	13	\$60.9 million
Totals	45	\$548.2 million



Duncan Point, Baton Rouge

“Flood Fight”



Duncan Point, Baton Rouge

“Ongoing Construction”



Morganza Guide Levee

“scour holes on May 14, 2011”



Morganza Guide Levee

“scour holes after water receded”



Morganza Guide Levee

“scour holes repaired”



Operation Watershed – Recovery Contracts Awarded

Projects Awarded to Date	Contract Award Date
Duncan Point Seepage	Sep 2011
Chalmette Seepage	Sep 2011
Third District Phase I	Aug 2011
Greenville Bend	Oct 2011
Avondale Bend, RM 108 & RM 108.3	Oct 2011
Port Allen	Oct 2011
Baton Rouge Front Phase III	Nov 2011
Deep Draft Dredging, MR Baton Rouge to the Gulf	Jan 2012



Operation Watershed – Recovery

Contracts to be Awarded

Projects identified for the FY12 program are critical and were either identified or confirmed through the Operation Watershed-Recovery process. Planning and design has begun on all listed projects:

Projects to be Awarded	Contract Award Date
Alliance	Apr 2012
Mississippi River Repairs	Apr 2012
Baton Rouge Harbor (Devils Swamp) – Maintenance	May 2012
Deep Draft Projects, Head Of Passes	May 2012
Deep Draft Projects, Southwest and South Pass	May 2012
Deep Draft Projects, Tiger Pass	Jun 2012
Deep Draft Projects, Atchafalaya Crewboat Cut Bar and Bay	Jul 2012
Deep Draft Projects, Bayou Chene	Jul 2012
Deep Draft Projects, Baptiste Collette	Aug 2012
Old River Auxiliary Control Structure	Aug 2012
Old River Control Structure, Erosion	Aug 2012
Old River, Maintenance	Aug 2012
Morganza Control, Seepage	Aug 2012
Atchafalaya Basin, Maintenance	Aug 2012
Blackhawk Slide	Sep 2012
Old River Seepage	Sep 2012
Audubon Bridge Seepage	Sep 2012
Gravolet	Sep 2012
Marchand	Sep 2012
Saint Gabriel	Sep 2012
English Turn	Sep 2012
Saint Alice	Sep 2012
Tropical Bend	Sep 2012
Port Sulpher	Sep 2012

*** These date are working dates and will be refined as schedules progress**

Operation Watershed – Recovery

New Orleans District FY13 and beyond

Projects identified for FY13 and beyond. Planning and/or design has begun on all listed projects:

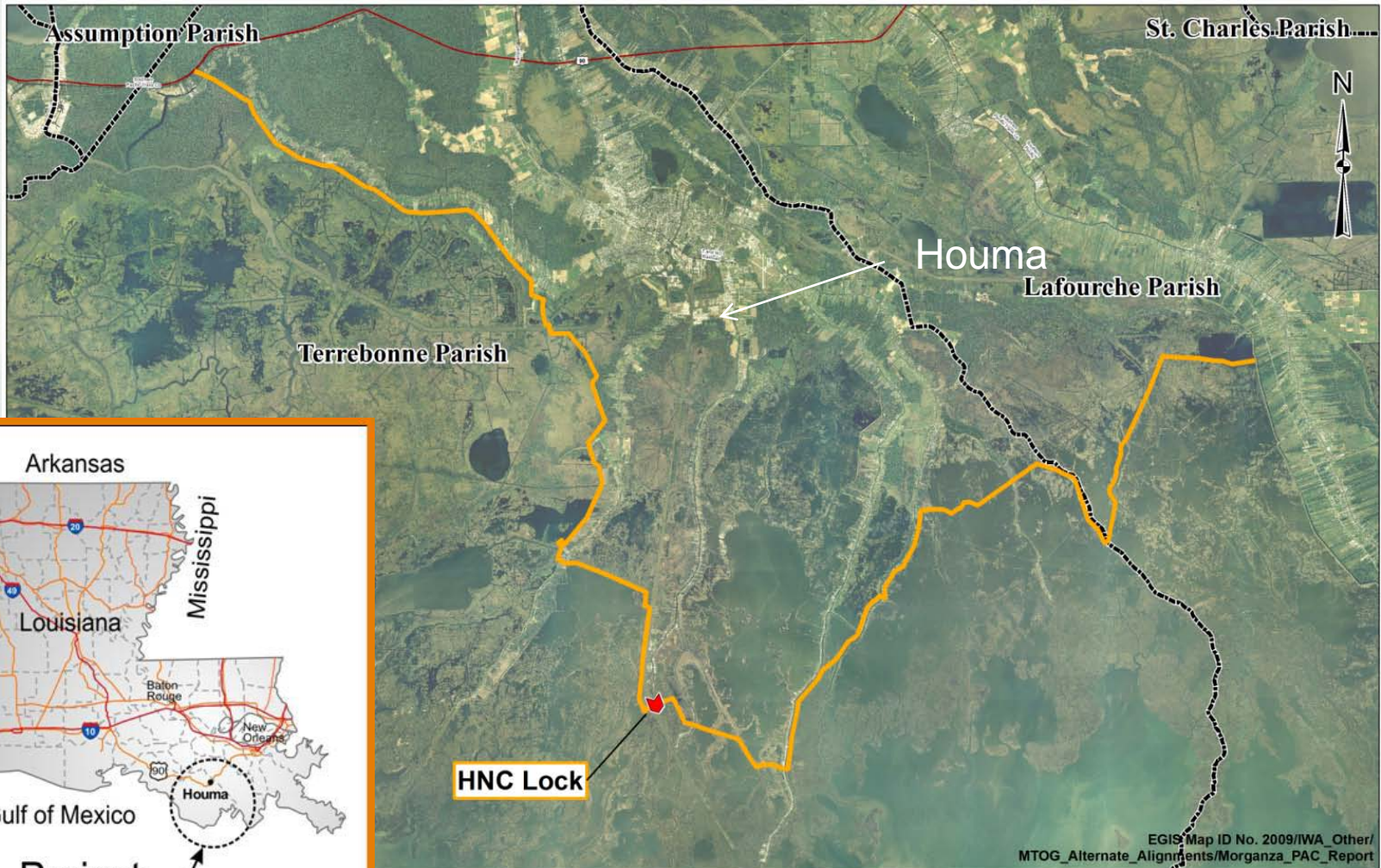
Projects to be Awarded > FY12	Contract Award Date
Wax Lake East Pumping Station	Sep 2012
Wax Lake West Pumping Station	Sep 2012
Franklin Pumping Station	Sep 2012
Centerville Pumping Station	Sep 2012
Northbend Pumping Station	Sep 2012
Morganza Control, curtain wall	Oct 2012
Carr Point Spur Dike	Nov 2012
Old River Control Structure, Outflow Channel	Jan 2013
Morganza Control, Lower Guide Levee	Feb 2013
Morganza Control Stilling Basin	Feb 2013
Huey P Long Seepage	Jun 2013
Algiers Seepage	Aug 2013
Pointe Coupee Seepage	Sep 2013
Point Pleasant Seepage	Sep 2013

* These date are working dates and will be refined as schedules progress

Studies/Progress



Morganza to the Gulf

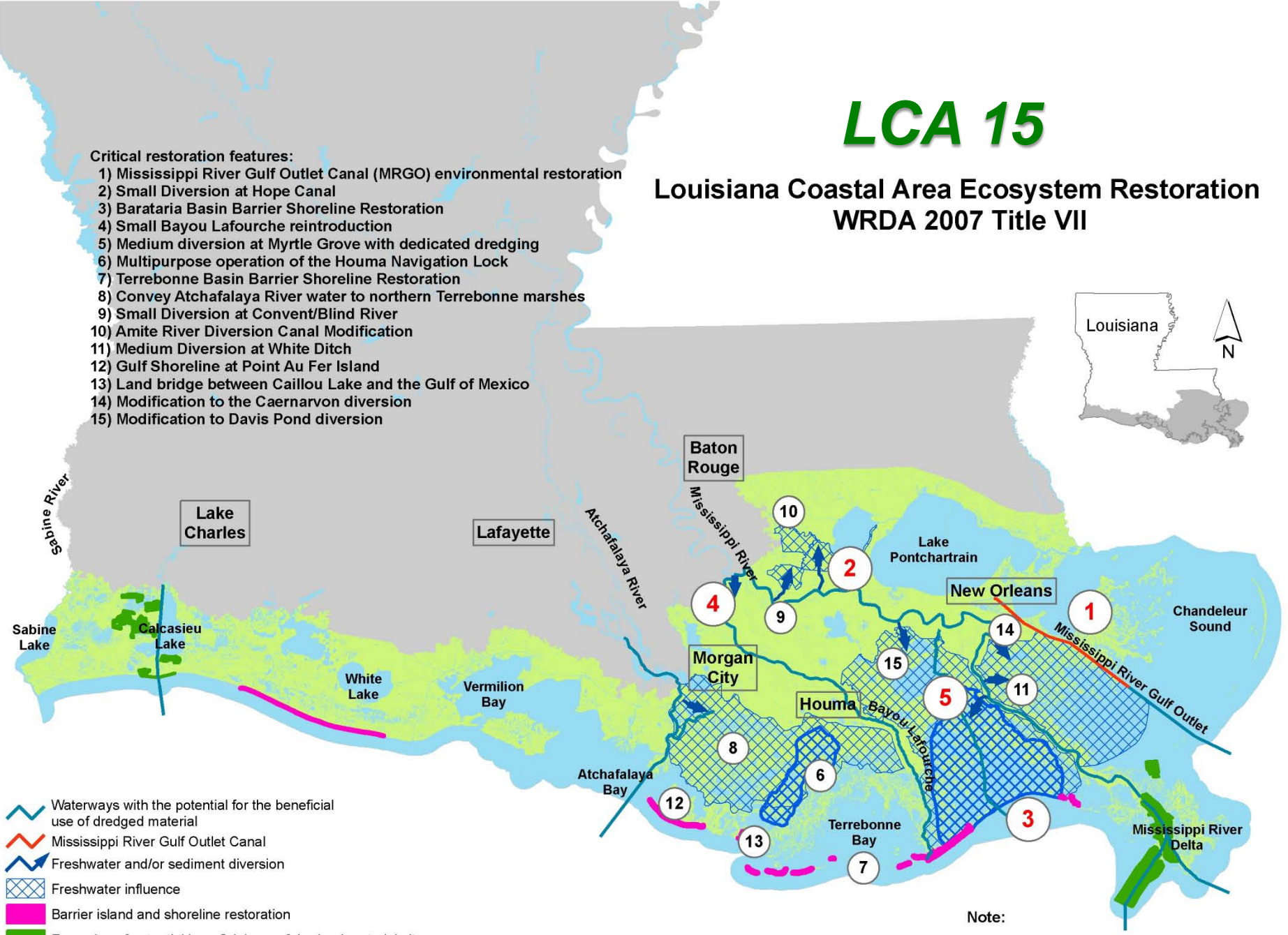


LCA 15

Louisiana Coastal Area Ecosystem Restoration WRDA 2007 Title VII

Critical restoration features:

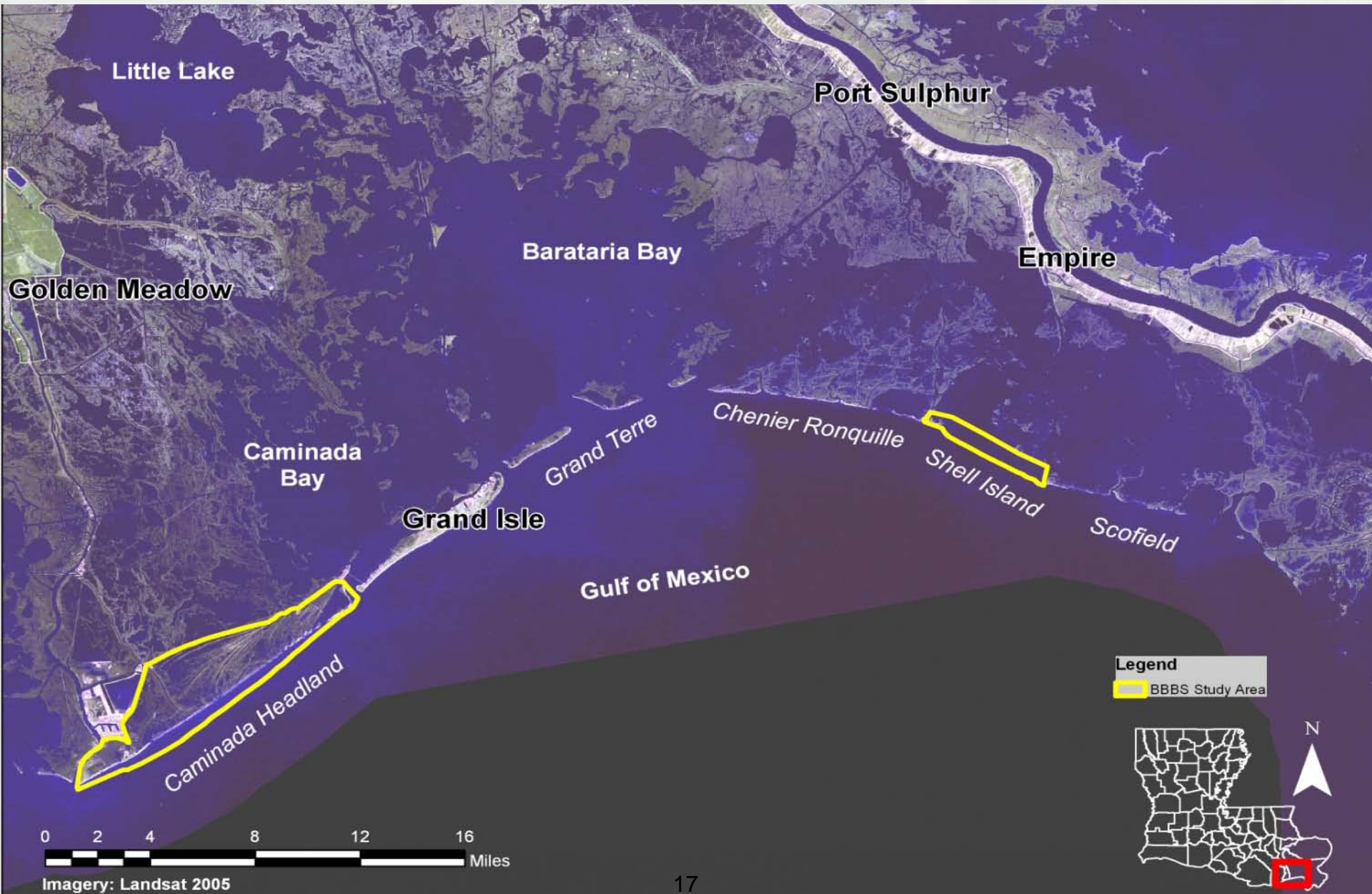
- 1) Mississippi River Gulf Outlet Canal (MRGO) environmental restoration
- 2) Small Diversion at Hope Canal
- 3) Barataria Basin Barrier Shoreline Restoration
- 4) Small Bayou Lafourche reintroduction
- 5) Medium diversion at Myrtle Grove with dedicated dredging
- 6) Multipurpose operation of the Houma Navigation Lock
- 7) Terrebonne Basin Barrier Shoreline Restoration
- 8) Convey Atchafalaya River water to northern Terrebonne marshes
- 9) Small Diversion at Convent/Blind River
- 10) Amite River Diversion Canal Modification
- 11) Medium Diversion at White Ditch
- 12) Gulf Shoreline at Point Au Fer Island
- 13) Land bridge between Caillou Lake and the Gulf of Mexico
- 14) Modification to the Caernarvon diversion
- 15) Modification to Davis Pond diversion



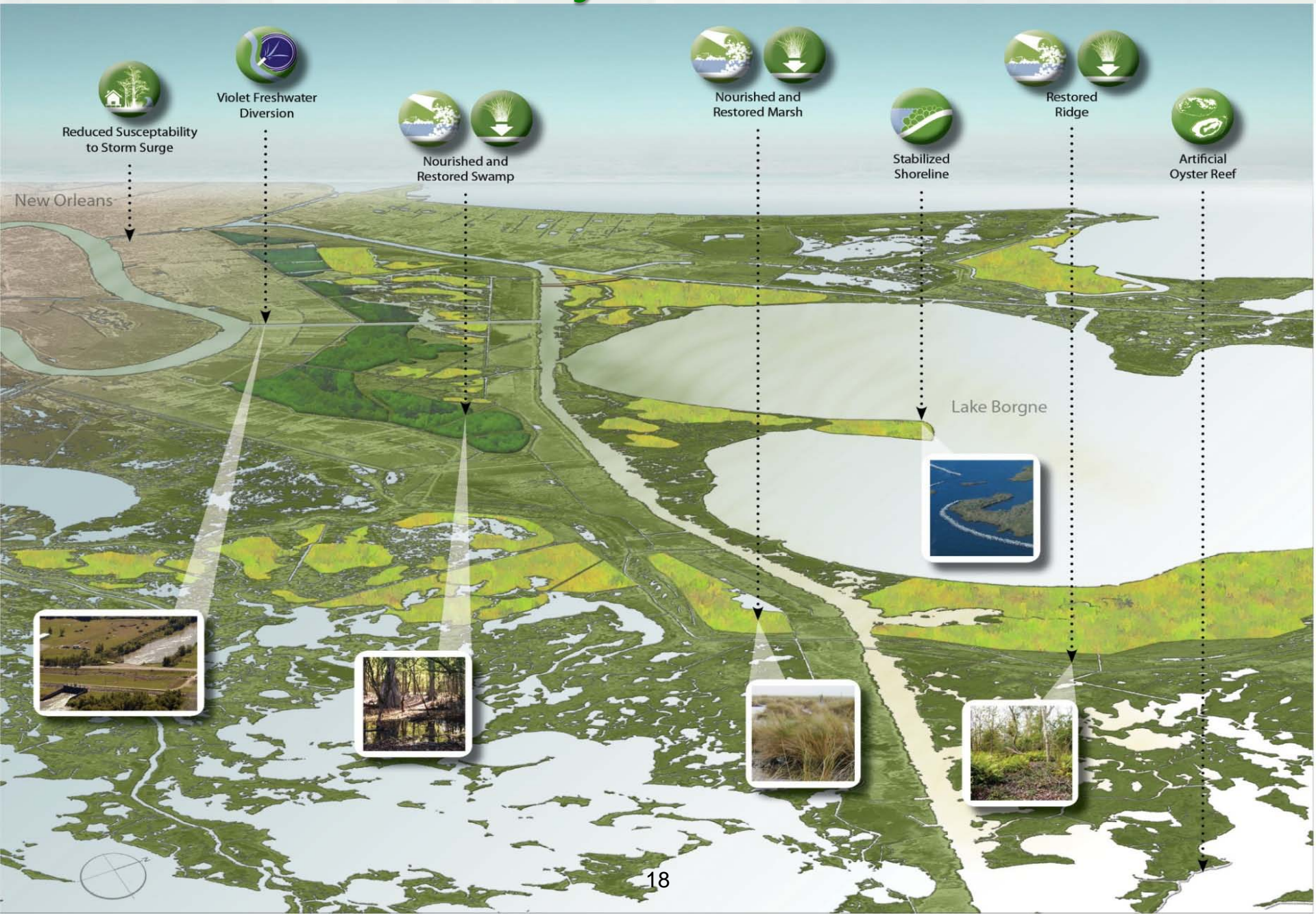
Note:

Critical features 1-5 contingently authorized
Critical features 6-15 conditionally authorized

Barataria Basin Barrier Shoreline



MRGO Ecosystem Restoration



Hurricane and Storm Damage Risk Reduction System





US Army Corps of Engineers

GREATER NEW ORLEANS HURRICANE AND STORM DAMAGE RISK REDUCTION SYSTEM (HSDRRS)

Status - November 2011



17th St. Outfall Canal Interim Closure Structure



Seabrook Floodgate Complex



New Orleans East I-10 Crossing



Bonabel Pump Station Lakefront Levee



IINC Surge Barrier Wall



St. Bernard Floodwall



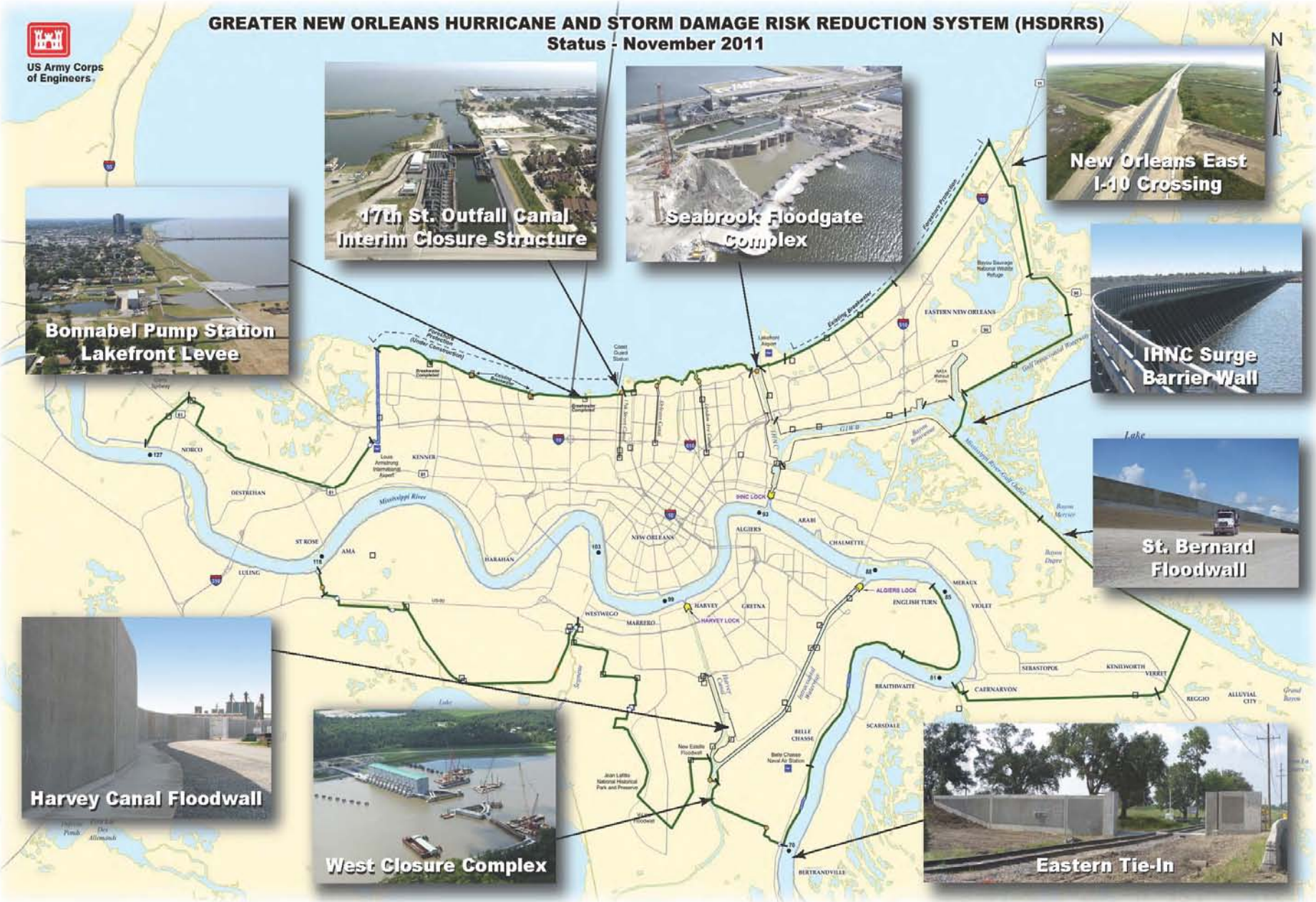
Harvey Canal Floodwall



West Closure Complex



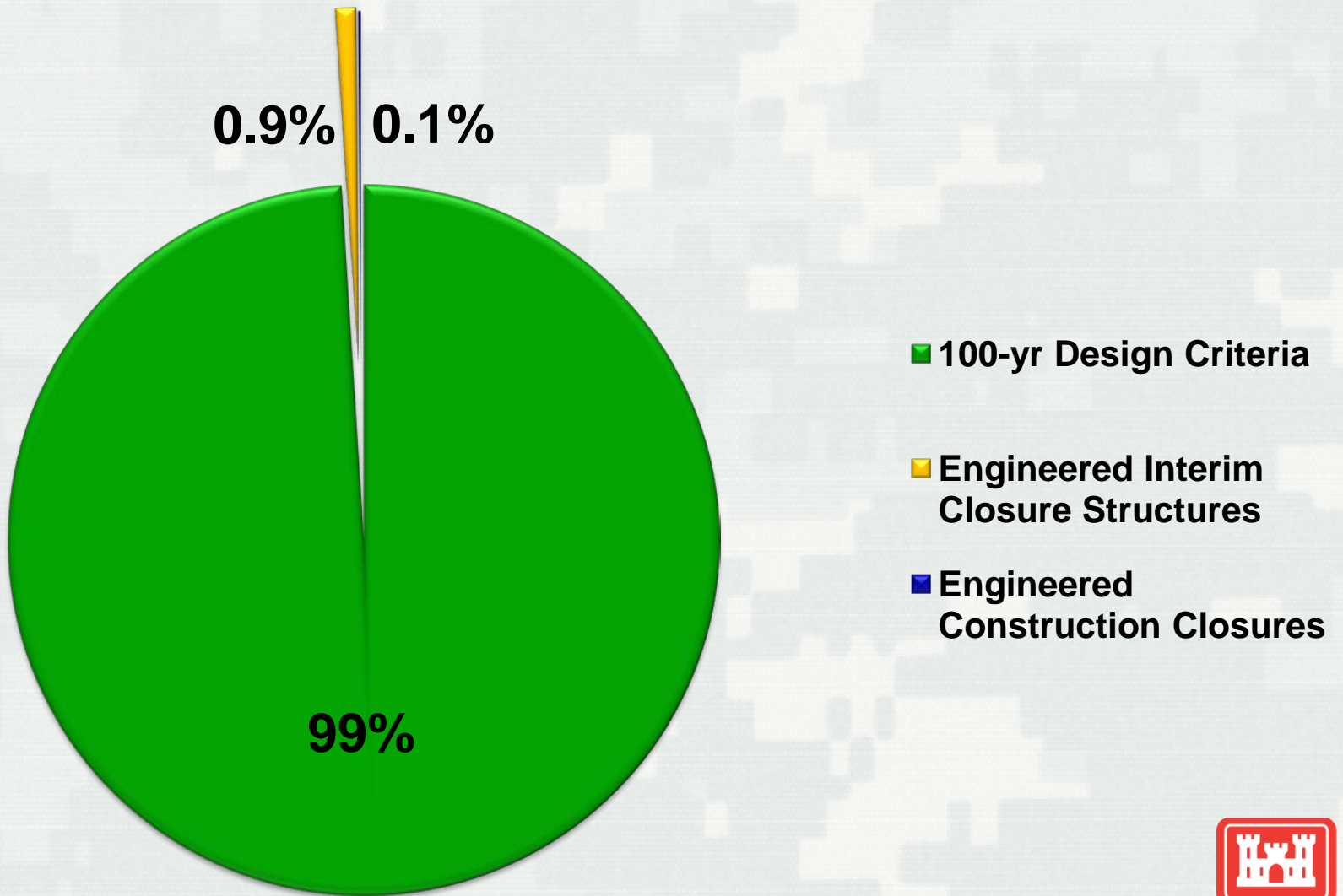
Eastern Tie-In



BUILDING STRONG®

HSDRRS Status

as of March 30, 2012



Location of Seabrook Floodgate Complex

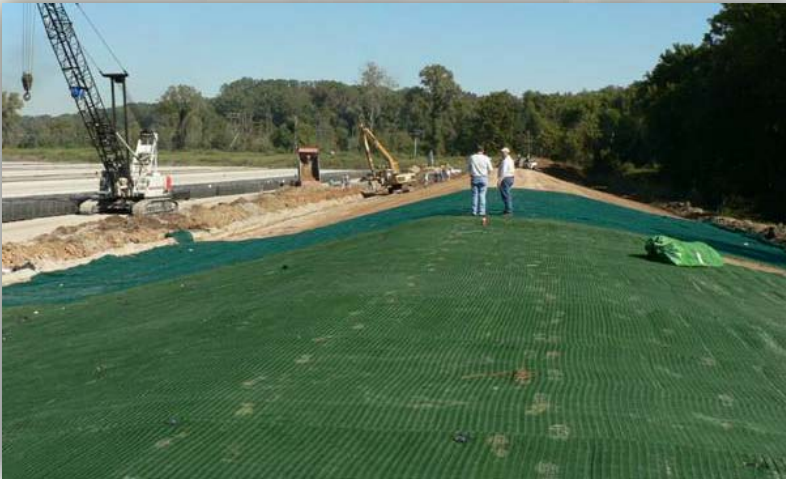




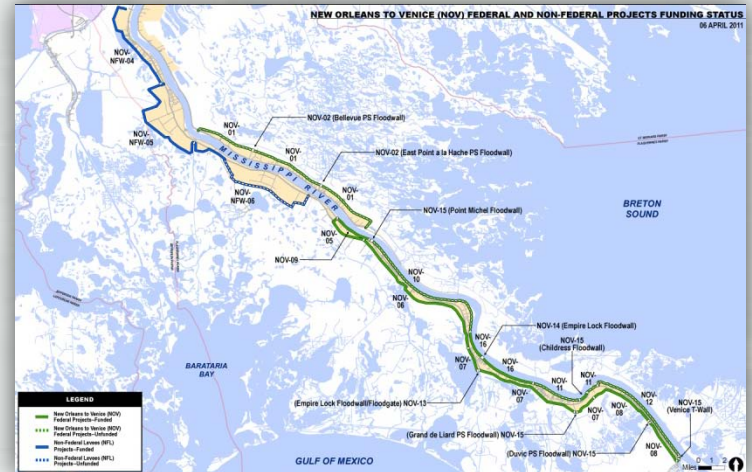


Finished Project (Conceptual)

Remaining Work



Armoring



NOV / NFL



SELA Interior Drainage



NCC / Accreditation

FY12 Dredging Schedule

FY12 Ongoing and Scheduled Cutterhead, Dustpan, and Hopper Dredging Work for the New Orleans District



		FY 2012												
Project	Manager	OCT	NOV	DEC	JAN	FEB	MAR	APR	MAY	JUN	JUL	AUG	SEP	
Mississippi River Southwest Pass #1-2012	Spraul					[Hopper]								
Mississippi River Southwest Pass #2-2012	Spraul					[Hopper]								
Mississippi River SWP Cutterhead Rental #1-2011	Spraul						[Cutterhead]							
Mississippi River New Orleans Harbor/Bayou Lafourche #2-2011	Spraul/Schneider						[Cutterhead]							
Mississippi River SWP Cutterhead Rental #2-2011	Spraul						[Cutterhead]							
Calcasieu River Bar Channel #1-2011	Falk							[Hopper]						
Outlets of Venice Tiger Pass	Schneider								[Cutterhead]					
Atchafalaya Basin, GIWW & Miscellaneous Projects IDIQ 2012	Lowe/Landry/Beauvais									[Cutterhead]				
Atchafalaya Bar #1- 2012	Lowe									[Cutterhead]				
Mississippi River Hopper Dredge Disposal Area (HDDA)	Spraul									[Cutterhead]				
Mississippi River Southwest Pass #4-2012	Spraul									[Hopper]				
Calcasieu River Mi. 5 to 17	Falk											[Cutterhead]		
Mississippi River New Orleans Harbor/Houma Nav. #3-2011	Spraul/Landry/Schneider											[Cutterhead]		
Atchafalaya River, Bay, Bar & Horseshoe #1-2012	Lowe											[Cutterhead]		
Outlets of Venice Baptiste Collette	Schneider											[Cutterhead]		



REMEMBER OUR



Johan Barrios

Tiffany Bass

Kathleen Cavanaugh

Ira Dorsett

Frederick Epsy

Chimeadu Ewoh

Annette Hawkins

Ollie Jackson

Mark Lafleur

Kendrick Lawrence

Karla Marshall

Christopher Talbert

DEPLOYED PERSONNEL

Questions?



BUILDING STRONG®