

# Letterkenny Army Depot

ISO 9001 Registered

ISO 14001 Registered

OHSAS 18001 Registered



## A Capabilities Based Depot

**LEAD is the depot of choice for Industry, Government, and the Greatest Warfighters in the world.**

## **MISSION STATEMENT**

**Deliver superior maintenance, manufacturing, logistics, life cycle support and service worldwide to the Joint Warfighter and our international partners.**

### **Keys to success:**

- **Cost**—deliver goods and services to supported agencies at the lowest cost possible
- **Quality**—deliver goods and services to supported agencies IAW quality parameters established by contract and specifications
- **Schedule**—deliver goods and services to supported agencies on or before required delivery date
- **People**—develop personnel to ensure: Personnel growth, motivation and cost/quality/schedule
- **Growth**—grow the business

# Letterkenny Army Depot

## COMMAND PRIORITIES

### AMC

- Support the Warfighter
- Instill a culture of efficiency and resourcefulness
- Consolidate and optimize our capabilities
- Provide global expeditionary logistics
- Network the logistics enterprise
- Build partner capacity

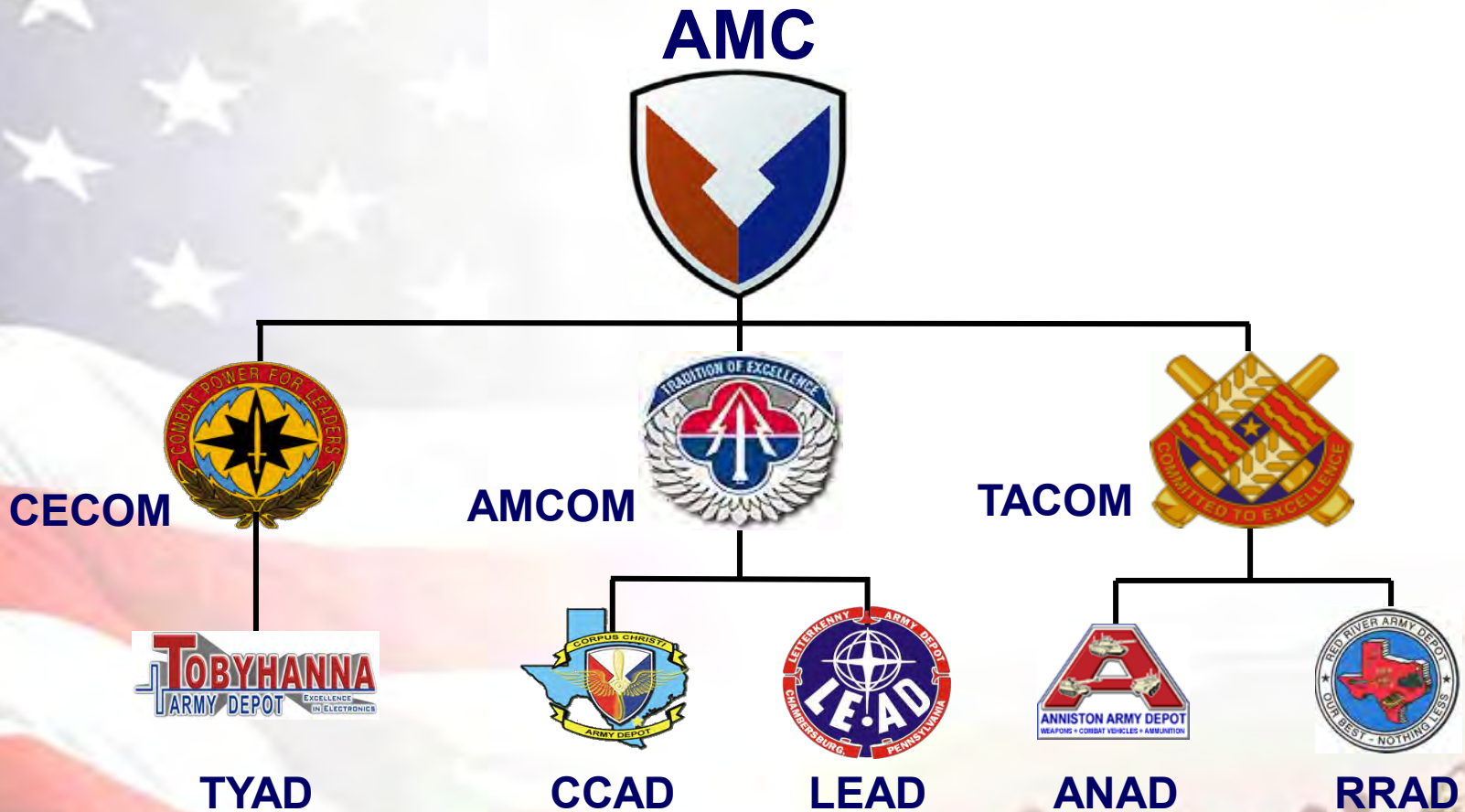
### AMCOM

- Soldier throughout the ARFORGEN Cycle
- Enable, support and improve weapon system life-cycle success, including S&T
- Recruit, develop and sustain a top performing workforce
- Integrate a culture of efficiency without sacrificing effectiveness
- Leverage ME relationships and collaboration to derive measureable benefit to the Soldier
- Assure technology protection

### LEAD

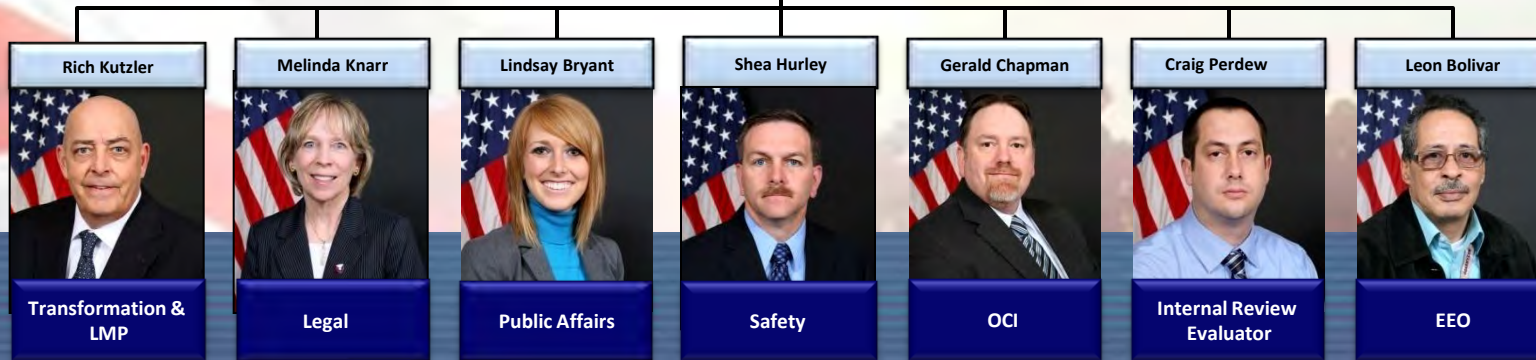
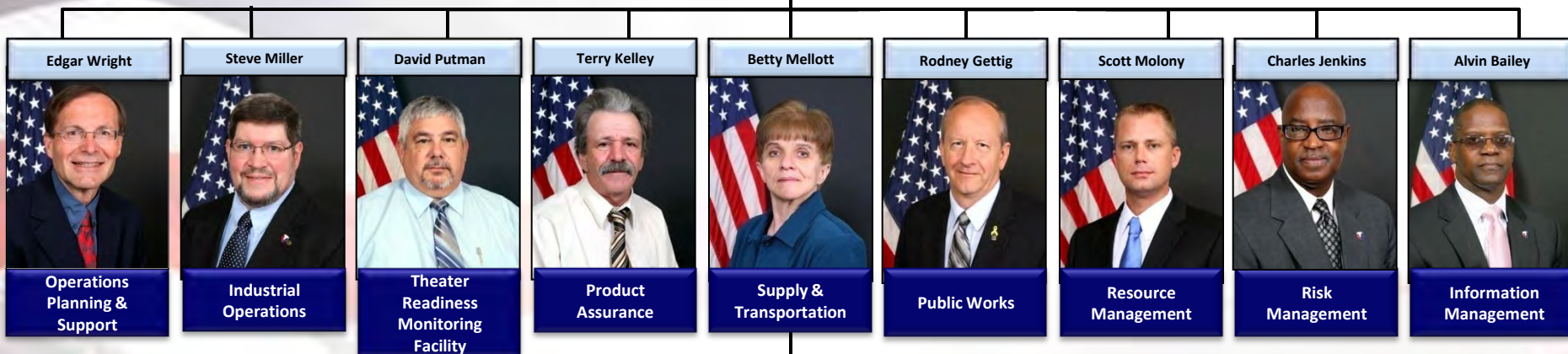
- Maintain/provide a safe, effective and efficient work place
- Gain visibility of the business - evolve LMP into a viable enterprise resource planning tool
- Meet cost, quality and schedule goals/metrics across all depot functions
- Continually improve every day
- Professionally develop our human capital

# Letterkenny Army Depot TASK ORGANIZATION



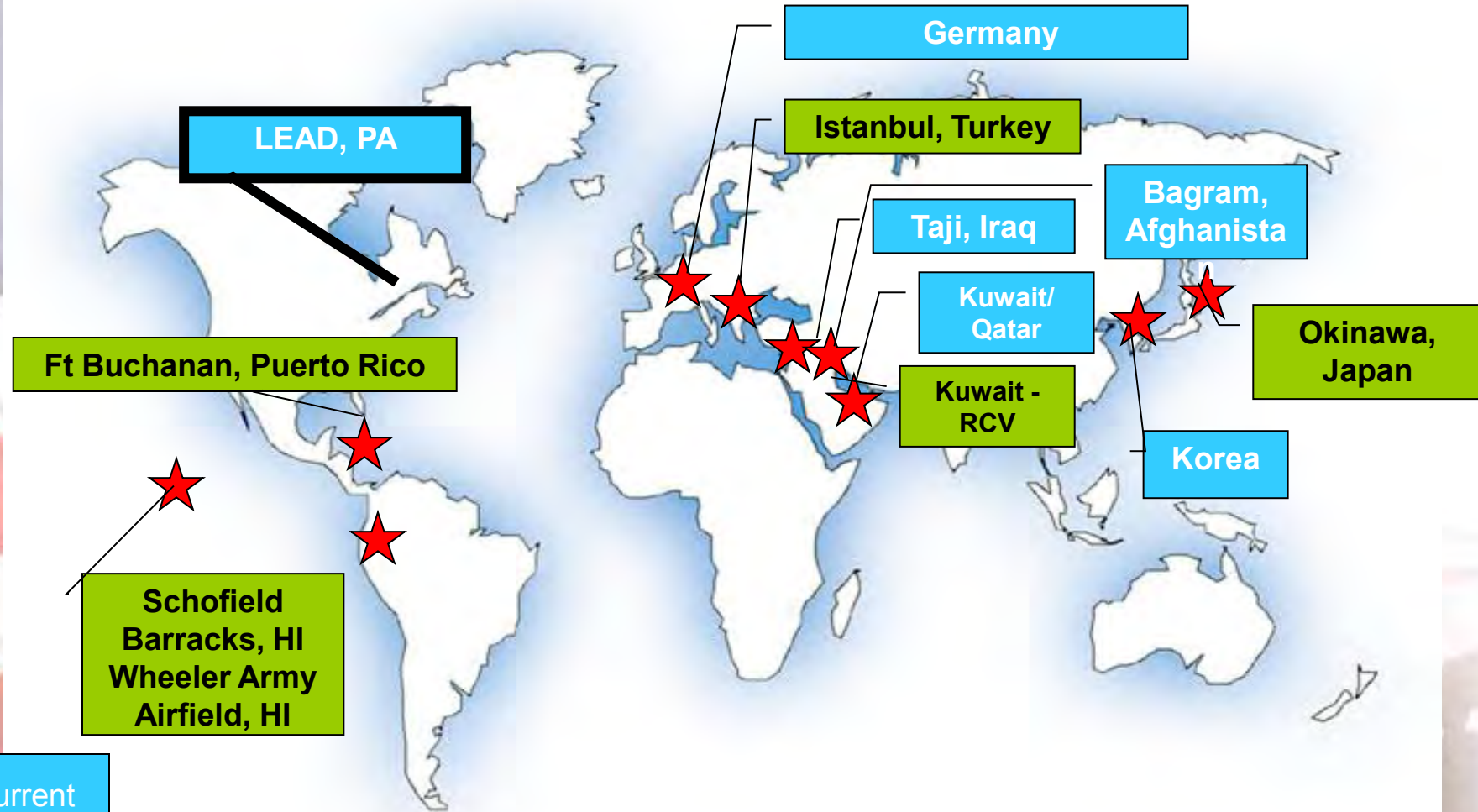
# Letterkenny Army Depot

# ORGANIZATIONAL CHART



# Letterkenny Army Depot World-wide locations

## WHERE WE ARE



Current

Prior

# Letterkenny Army Depot

## CONVENIENTLY LOCATED



McGuire AFB – 191 miles

New York City – 223 miles

Philadelphia – 130 miles

Baltimore – 96 miles

Dover AFB – 182 miles

Norfolk – 281 miles

Charleston – 621 miles

65 miles south of Harrisburg International Airport

110 miles north of Washington, DC

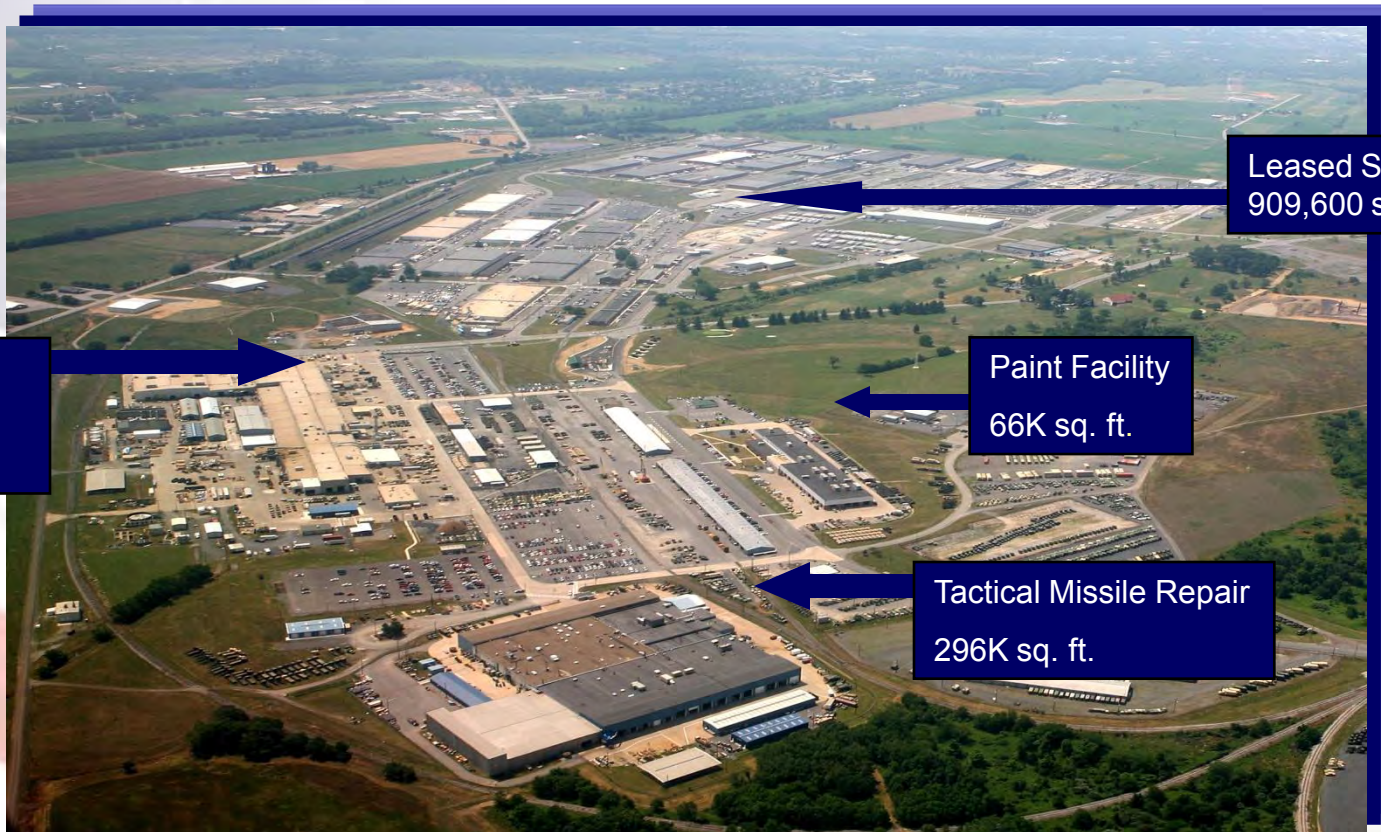
CSX rail  
interchange near  
installation

Norfolk South  
interchange – 15  
miles

50% of the East Coast population lies within a 350 mile radius

# Letterkenny Army Depot

## THE INDUSTRIAL COMPLEX



Industrial  
Operations  
318K sq. ft.

Leased Space  
909,600 sq. ft.

Paint Facility  
66K sq. ft.

Tactical Missile Repair  
296K sq. ft.

18,668 acres

3.8 million labor hours

1.47 million sq ft shop floor

\$175 million specialized equipment

\$1.54 billion infrastructure

**3,103 employees comprised of:**

**1,704 Government; 1,399 contractor/military; and 804 tenants**



# Letterkenny Army Depot

## 15 Major Tenants

- Defense Information Systems Agency (DISA)
- Letterkenny Munitions Center (LEMC)
- Computer Science Corporation (CSC)
- U.S. Army TMDE Support Center (TMDE)
- CECOM Industrial Logistics System Office (ILSO)
- 99<sup>th</sup> Reserve Readiness Command (99<sup>th</sup> RRC)
- U.S. Army Material Systems Analysis Activity

### USAMSAA

- U.S Army Health Clinic
- Defense Reutilization & Marketing Office (DRMO)
- Lower Tier Project Office, PATRIOT Office (LTPO)
- Defense Automated Printing Service (DAPS)
- U.S. Army Civilian Personnel Advisory Center (CPAC)

### CPAC

- ACC, Directorate of Contracting
- Baltimore District Army Corps of Engineers
- Patriot Federal Credit Union

# Letterkenny Army Depot

## DEPOT POPULATION

Depot Proper  
Total = 2871

32% less than  
5 years federal  
service

5%  
Minority

42% Veteran

8% Disabled  
Veterans

20% more than  
30 years federal  
service

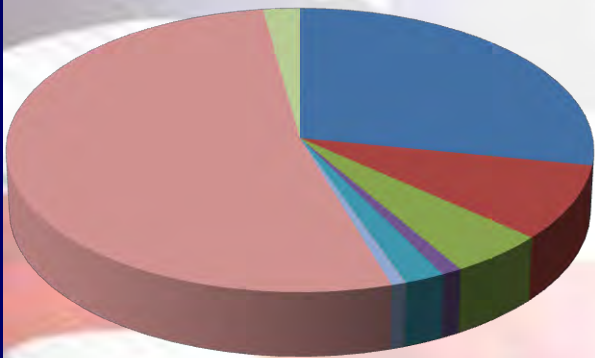
17%  
Women

Average age  
of workforce  
is down from  
47.5 to 45.4

## LEAD Workload (\$M)

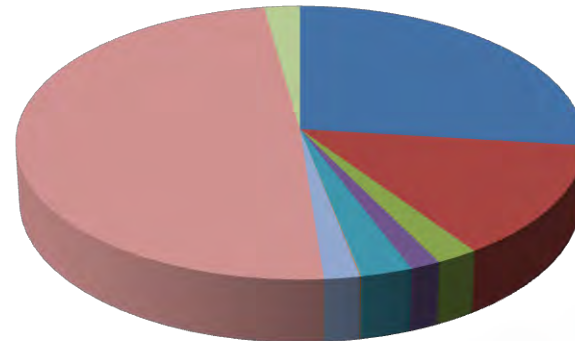
## LEAD Workload (DLH)

Sum of Authorized \$



AMCOM	\$432,352,691.70
CECOM	\$131,565,099.76
FMS	\$76,112,011.60
MARINES	\$15,849,415.01
National Guard	\$31,653,407.64
NAVY	\$225,379.28
PRIVATE PARTNERSHIP	\$11,159,274.33
TACOM	\$808,432,924.45
TRMD	\$33,937,387.26

Sum of Authorized Man-Hours



AMCOM	1,392,505
CECOM	700,569
FMS	113,015
MARINES	81,217
National Guard	139,557
NAVY	2,276
PRIVATE PARTNERSHIP	96,226
TACOM	2,535,554
TRMD	115,938

# Letterkenny Army Depot

## A CAPABILITIES BASED DEPOT

- Metal Pretreatment, Plating & Painting
- Sheet Metal Fabrication Capabilities
- Missile Maintenance
- Generator Overhaul
- Wire Harness Fabrication
- Motor Rebuilding

- Electronic System Integration
- Machine shop
- Circuit Card Repair
- Hydraulics
- Diagnostic Testing
- Automotive Recap

### Aviation & Missile Command



### Tank Automotive Command



### Communication Electronics Command



### Route Clearance Vehicles



### Armor Projects



### Special Operations Command



### Joint PEO-Chemical Biological Defense



Rhino Kits

# Letterkenny Army Depot

## **CENTER OF INDUSTRIAL & TECHNICAL EXCELLENCE for**

*Air Defense & Tactical  
Missile Ground Support Equipment*

*Mobile Electric Power Generation Equipment*

*Patriot Missile Recertification*

*Route Clearance Vehicle (RCV)*

---

**CITE Request Submitted**

**Unmanned Aerial System (UAS) - Ground Support**

---

**Named Depot Source of Repair for  
RCV in 2010**



# Letterkenny Army Depot

## PRODUCTION/PROCESS AREAS

1,476,149 square feet of overhaul/  
process/assembly work areas



# Letterkenny Army Depot

## ELECTRONICS SHOPS

- 296,161 square foot electronic and missile system maintenance and equipment integration facility
- High tech facility specializing in the refurbishment of:
  - Analog/digital electronics
  - Phased array radars
  - Engagement Control Stations
  - Information Control Centers
  - Launching Stations
  - Automatic Test Equipment (ATE)
  - Guidance and control (G&C) maintenance
  - Electronic systems integration, test, diagnostics, and repair
  - Circuit card refurbishment

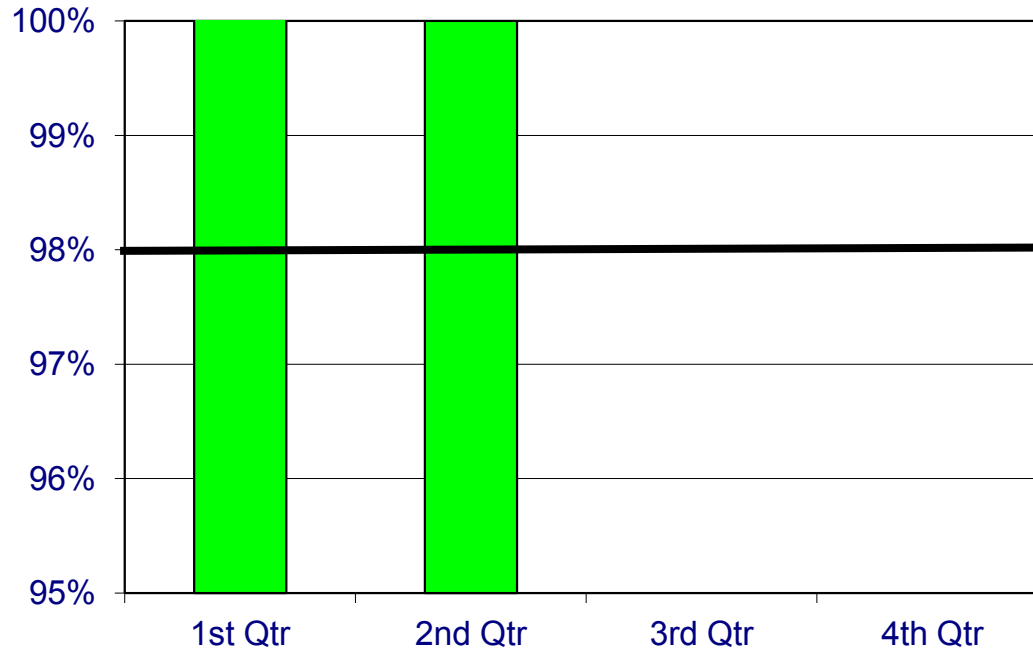


Current primary emphasis:  
Phased Array Tracking to Intercept of Target (PATRIOT) end items, Avenger, TOW and components of Army missile systems, e.g., Javelin, Hellfire, MLRS, and HIMARS

# Letterkenny Army Depot

## FY12 CUSTOMER SATISFACTION

**AMC Goal**



PQDRs (External) Recd	7	5		
SDRs (External) Recd	0	3		
Hotline Calls Recd	1	0		
E-mails Recd	3	1		
Surveys Recd	15	5		
Customer Calls	15	15		
Items Shipped	35030	22125		

**Green = 98%>**  
**Amber = 85% - 97.9%**  
**Red = < 85%**



# Letterkenny Army Depot

## LEAD CERTIFICATIONS

ISO 9001 – all employees

ISO 9001 Certified LEAD Auditor - Required for: Proponent identifies required participants

ISO 9001:2000 - General Overview - Required for: Proponent identifies required participants

ISO 9001:2000 – Auditing - Required for: Proponent identifies required participants

ISO 9001:2000 - ISO Introductory for Senior Management Overview - Required for: Proponent identifies required participants

ISO 9001:2000 Internal Auditor Training - Required for: Proponent identifies required participants

ISO 14000 (Mgt/Leadership) - Required for: Commander, Deputy Commander, Directors and all Union Presidents

ISO 18000

### LEAD Employee Certifications

**Certifications are tracked in Training Management Software (TMS)**

**Apparatus Driver/Operator Aerial** - Required for: GS-081 Series

**Apparatus Driver/Operator Pumper** - Required for: GS-081 Series

**Defense Packaging of Hazardous Materials for Transportation** - Required for: Civilian and military handlers, packers, inspectors, and preparers (certifiers) of hazardous materials

**Electrostatic Discharge (ESD)** - Required for: Viewing as identified by the supervisors (Supervisors, Electronic Mechanics and Electronic Measurement Mechanics)

**Hazardous Material Awareness** - Required for: GS-081, GS-018 personnel

**Hazardous Material Incident Command** - Required for: GS-081-12, 081-10, 081,08, 081-07, 018-11 (

**Hazardous Material Operations** - Required for: GS-081-12, 081-10-, 081-08, 081-07, 081-05, 081-06 and GS-018-11

**Hazardous Material Technician** - Required for: GS-081-12, 081-10, 081-08, 081-07, 081-06, 081-05 and 018-11

**NDT Liquid Dye Penetrant, Level I, Level II, & Level III (Non-Destructive Testing)** - Required for: NDT operators.

**NDT Magnetic Particle, Level I, Level II, & Level III (Non-Destructive Testing)**

**NDT Radiographic, Level I, Level II, & Level III (Non-Destructive Testing)** - Required for: Employees who currently hold Radiographic Certificates

**NDT Visual Weld Inspection Instructor** - Required for: Anyone teaching and testing the Visual Weld Inspection Course

**NDT Visual Weld Inspector** - Required for: Anyone inspecting welds visually

**Radar Use** - Required for: GS-0083 and GS-0085 employees who operate radar equipment

**Selective Electrodposition of Metals (Sifco Process)** - Required for: Electroplating Workers in 3711 series

**Soldering Certification (Basic)** - Required for: Employees who solder, not job specific

**Soldering Certification (Micro-miniature)** - Required for: Employees who solder components on circuit boards or do circuit board repairs, not job specific

**Soldering Instructor Certification (Basic and Micro- Miniature)** - Required for: Employees who solder and want to teach basic and micro-miniature soldering certification and basic and micro-miniature recertification, not job specific.

# Letterkenny Army Depot

# PARTNERSHIPS

**FY 12 Programmed DLH: 95,260**

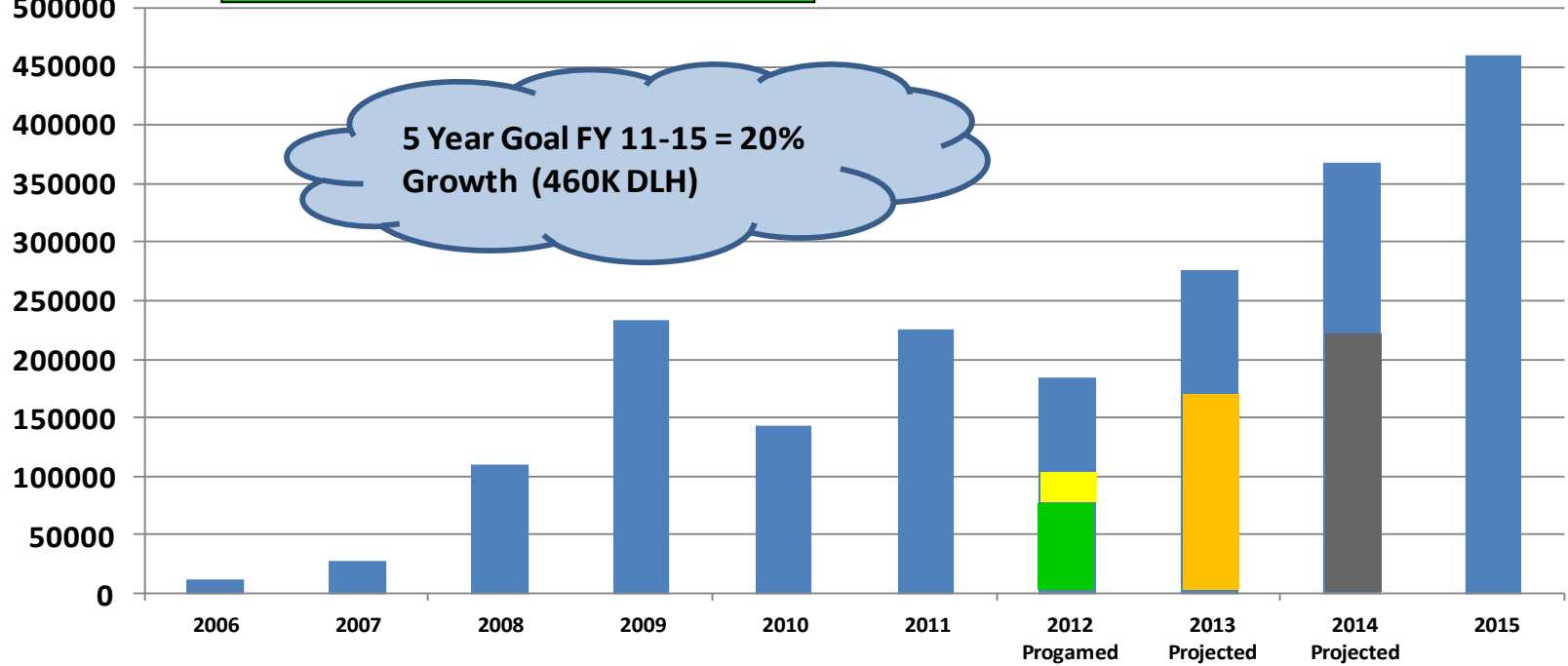
**FY 12 Completed DLH: 68,785**

**FY 13 Projected DLH: 168,000**

**FY 14 Projected DLH: 210,000**

M/Hrs  
500000

5 Year Goal FY 11-15 = 20%  
Growth (460K DLH)



## Lockheed Martin

TADS/PNVS  
HIMARS components  
Wind Corrected Munitions  
PAC 3 Cables  
Longbow FCR Tooling  
M270 ROKA

## AAI Corporation

Shadow 200 TUAS Support Equipment  
GCS Shelter Modification

## Lockheed Martin

JAVELIN Hardware Repair Program

## Harris

HIMARS Components

# Letterkenny Army Depot

## LEAD PARTNERSHIP

### New Build Phased Array Tracking to Intercept of Target (PATRIOT) Launchers



- Build new PAC-3 PATRIOT Launchers
- First Article qualification was awarded for all fabricated items
- Various cable and mechanical sub-assemblies are fabricated by LEAD
- Assemble and integrate specifications
- Complete top coat with water soluble chemical agent resistant coating (CARC) paint
- A Comprehensive Documentation Package is developed for each launcher
- Complete system simulation and testing

**Partnering for Future Success**

Unclassified

# Letterkenny Army Depot

## MINE RESISTANT AMBUSH PROTECTED (MRAP) PRODUCTION



**LEAD provided fabrication, modifications, component installation, final assembly, road test, paint and wash**



# Letterkenny Army Depot

## JOINT PARTNERSHIPS



Command Launch Unit (CLU) Testing and Repair



- Repair
- Programming
- Test
- CAT 3 Storage



Optical Interface (OIF) and Forward Looking Infra-Red (FLIR) Circuit Card Testing and Repair

# Letterkenny Army Depot

## CONTINUOUS PROCESS IMPROVEMENT

### Employee Involvement



### 8X Shingo Recipient

PATRIOT '05  
HMMWV '06  
HMMWV '07  
Power Generator '07  
BIDS '08  
PATRIOT 08  
PATRIOT '10  
AGPU '11

### Hands on Action



### Lean Success – FY12 (Oct.-Feb.)

- Completed 3 Value Stream Analysis
- 9 Rapid Improvement Events
- WPU savings \$9,255,638
- WPU year end projected savings \$17.3M

### Lean Success – FY11

- Completed 15 Value Stream Analysis
- 33 Rapid Improvement Events
- WPU Savings \$ 36,561,927

### Value Added Results



### 41 Two Piece Summaries YTD

**TWO PIECE SUMMARY**  
AGPU Insert Protection

ISO 14001 Registered  
ISO 9001 Registered

**REASON FOR ACTION:** Why did you have to do the work?  
Mechanics manufacturing floor removed of

**FINAL STATE:** How does problem look visually now change?  
Mechanics in disassembly install old hardware to protect inserts in paint business in MOD-1 remove old hardware install new hardware, no cleaning required

**ONGOING BENEFIT:** If you, the Depot, the rest of depot or target get as a result of you either moved unneeded task of tapping saving the mechanics time increased average flow time in MOD-1 by over 2.2 minutes decreased the obs required in work area

**Focus:**  
- Lower rejects for broken and loose hardware

**Baseline Data:**  
- Broken and loose hardware was identified as one of the highest defects on the AGPU line

**Approach:**  
- Protect inserts from paint

**RESULTS METRICS:**

X	WAST SAVINGS	
X	COST AVOIDANCE	\$1,794
X	WASTE SAVINGS	
X	TYPE OF TRAINING	
X	CYCLE TIME	Reduced cycle time by one 2.2 Min

**DATE OF PROJECT:** May 2010

**TEAM MEMBERS:** LARRY REESE  
TOM LANG  
CHRISTOPHER BOWEN

**WBS INVESTED:**  
1 hr  
1 hr  
1 hr

**TOTAL WBS INVESTED:** 3 hours

# Letterkenny Army Depot

## PRODUCTS OVERVIEW

### Aviation & Missile Command



### Special Operations Command



### Armor Projects



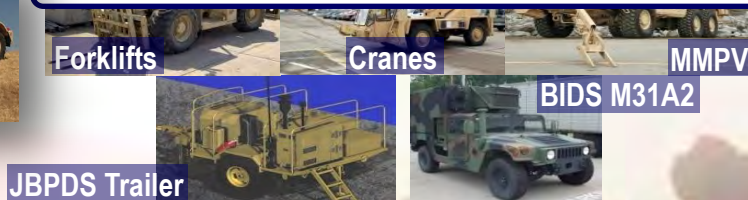
### TACOM Life Cycle Mat Command



### Route Clearance Vehicles



### Joint PEO-Chemical Biological Defense



### Communication Electronics Command



# Letterkenny Army Depot

## TUBE-LAUNCHED, OPTICALLY-TRACKED, WIRE-GUIDED (TOW) MISSILE DEPOT MAINTENANCE REPAIR



### LAND SCAN

The U.S. Army scans the landscape surrounding Vehicle Patrol Base Badel at the mouth of the Narang Valley in Konar province, Afghanistan, 9 May 2009. The base closed down enemy activity in the valley and in Narang, Chowkay and Nurgal districts. U.S. Army photo by SGT Amber Robinson.

*This image is a work of a U.S. Military or Department of Defense employee, taken or made during the course of the person's official duties.*

*Letterkenny Provides  
Integrated Support for:*

**TOW GROUND**

**TOW BRADLEY**

**TOW COBRA**

**ITAS**

**IBAS**

***Total Depot Level Support for the TOW Missile Family***



# Letterkenny Army Depot



## TOW GROUND COMPONENT REPAIR



**Optical Sight**



**Traversing Unit & Launcher Tube Assembly**



**Missile Guidance Set**

*Depot Maintenance Overhaul - System Rebuild/Modification - Fielding Support - Technical Training*



**Multi-Layer Circuit Card  
Testing and Repair**



**DIT-MCO Testing**



**Cable and Harness Repair/Fabrication**

# Letterkenny Army Depot



## TOW BRADLEY COMPONENT REPAIR



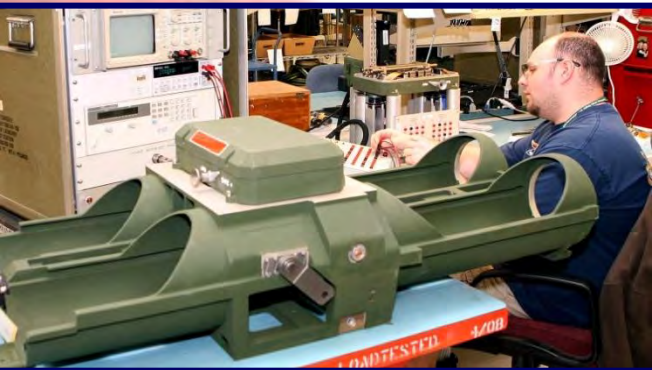
**Circuit Card Testing & Repair**



**Cable and Harness Repair/Fabrication**



**DITMCO Testing**



**Launchers**



**Missile Guidance Set (MGS)**



Remote Control

**Bradley Test Sets**

Optical Assembly

**Depot Maintenance Overhaul - System Rebuild/Modification - Fielding Support - Technical Training**

# Letterkenny Army Depot

## PHASED ARRAY TRACKING TO INTERCEPT OF TARGET (PATRIOT) RECAP PLAN

LEAD is DOD's **only organic solution** for one-stop service for tactical missile maintenance, modification and integration. LEAD possesses all the specialized capabilities that support **Total** weapon system maintenance including: manufacturing, storage, certification, GSE rebuild, CONUS and OCONUS support, and final demilitarization.



4 Radars



32 Launchers



3 Communication Relay Groups

**Mission: Recap program will bring the ground support system to near zero hours/miles and apply the PAC-3 modernization program upgrades.**



4 Engagement Control Stations



1 Information Control Central



8 Antenna Mast Groups

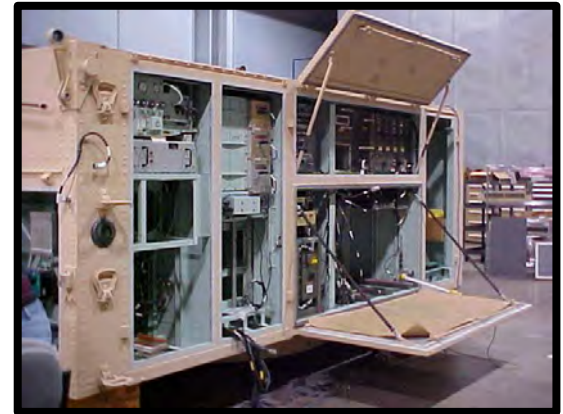
# Letterkenny Army Depot

## PATRIOT RADAR

- Complete disassembly of all electrical and mechanical sub-assemblies
- All sub-assemblies are tested down to the lowest possible level in accordance with Depot Maintenance Work Requirements (DMWRs)
- Final test for System Integration Checkout (SICO) using factory test equipment

## PATRIOT LAUNCHER

- Complete recap of launcher system
- Complete disassembly
- Corrosion removal and sand blast parts
- Parts are replated and exterior parts coated with Chemical Agent Resistant Coating (CARC) paint
- Reassemble and install all new hardware
- Complete testing



**PATRIOT Radar**



**PATRIOT Launcher**

# Letterkenny Army Depot

## PATRIOT ANTENNA

- Each phased array radar antenna element is removed
- All elements radio frequency tested individually on the General Purpose Electronic Test Station (GETS-1000)
- Antenna interior/exterior panels disassembled
- Radio frequency retainer/shield replaced
- Motors/actuators rebuilt
- Coaxial/triaxial cables replaced



PATRIOT Antenna

## ANTENNA MAST GROUP (AMG)

- Complete recap of AMG Assembly
- Complete disassembly
- Corrosion removal and sand blast parts
- Reassemble and install all new hardware
- Paint
- Complete integration and testing



PATRIOT AMG

# Letterkenny Army Depot

## THE TEST SITE

- PATRIOT radar and AMG systems tested at the 28-acre test facility located on the depot
- One of three places in the U. S. capable of mapping the antenna array
- Includes a pattern range for radar performance testing and a 1350 square foot, 24-foot high thermal chamber to simulate temperature extremes



Test site



Thermal chamber

## WORK PERFORMED ON PATRIOT MAJOR ITEMS

- Major Items: disassembled down to the circuit card level and tested
- All major parts and sub-assemblies (i.e., cabinets, brackets, cover plates): totally stripped of paint; some hardware is stripped, plated, and reused
- Each item replated and painted IAW DMWR/TMs
- Stenciling and silk screening markings applied IAW DMWR/TMs
- Chassis: disassembled, stripped, re-plated/painted and marked, reassembled and tested
- Circuit cards: sent to test on the GETS and replaced or repaired as required
- Wire harnesses: replaced or refurbished according to configuration requirements
- All assemblies and sub-assemblies: rebuilt IAW configurations and DMWR/TMs
- Testing: complete radar test and integrated system tests performed on 28-acre radar test site
- Parts fabricated on site that are not available for purchase
- Quality standards: checked at various steps in the assembly process by certified quality control inspectors

# Letterkenny Army Depot

## HIGH MOBILITY ARTILLERY ROCKET SYSTEM (HIMARS) COMPONENT REPAIR



**Weapon Interface Unit**



**Travel lock actuator**



- Repair of select HIMARS components
- Diagnostics of mechanical, hydraulic and electronic components
- Disassembly, repair, resealing, testing and certified inspection

**Mission--Repair select HIMARS Components:**



**Boom gearbox**



**Weapon interface unit**



**Hyd reservoir assembly**



**Power switching unit**



# Letterkenny Army Depot

## AVENGER OVERHAUL



### LEAD Statement of Work includes:

- Direct support and depot-level repairs
- Secondary item repairs
- Joint final inspection by LEAD, unit, and IMMC



### LEAD provides:

- Complete A1 overhaul & Reset
- Direct and general support for CONUS and OCONUS locations
- Final hand-off inspection at a designated unit location
- New Equipment Training (NET) at Battalion and Brigade field maintenance activities



LEAD has provided Avenger depot-level maintenance and total fleet maintenance to National Guard Bureau, Marine Corps, and Foreign Military customers since 1992.

# Letterkenny Army Depot

## M997 AMBULANCE OVERHAUL/REBUILD



- LEAD overhauls Army National Guard M997 Ambulances
- Upgraded powertrain and air conditioning systems installed
- 1000 ambulance overhaul potential
- Utilize assembly lines (Lean manufacturing principles) for HMMWV and shelter repair for optimum results (cost and quality benefits)



# Letterkenny Army Depot

## ROUTE CLEARANCE VEHICLE

On order from TACOM Program Manager – Assured Mobility Systems establish a Fleet Modernization Activity in Kuwait for US Army and Marine Corp Route Clearance Vehicles (RCV) along with selected USMC and Army Mine Resistant Ambush Protected (MRAP) assets. Success will be achieved by attaining a sustained production rate of 32 vehicles per month at the mid point of a three year effort with total fleet repair and modernization as the end state objective.

Cougar



Buffalo



Husky MKII



RG31

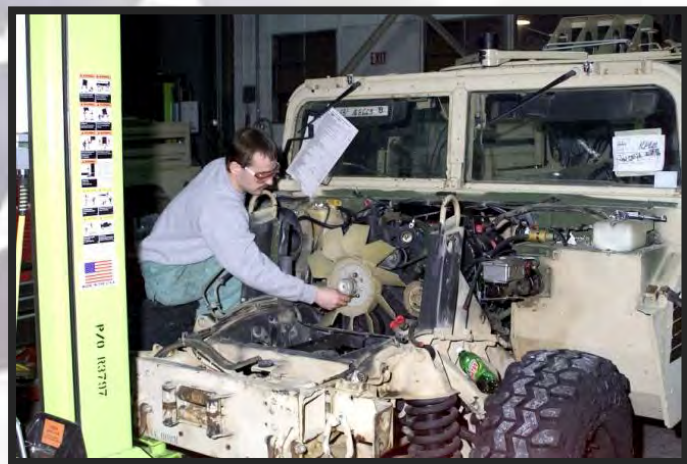


JerrV



# Letterkenny Army Depot

## GROUND MOBILITY VEHICLE (GMV) RESET



← Before → After →



← Before → After →



# Letterkenny Army Depot

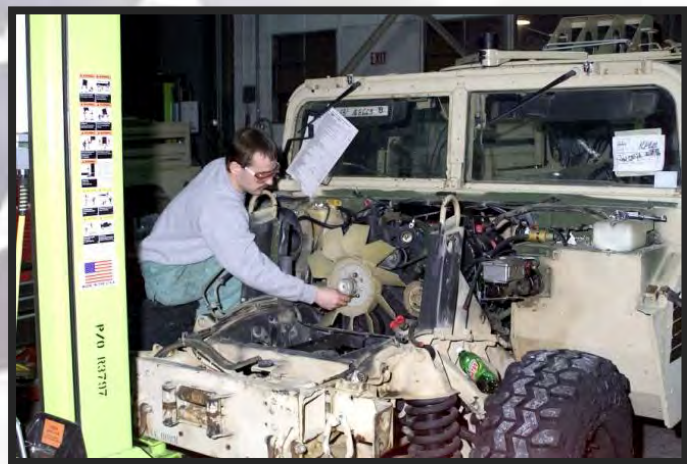
## HIGH MOBILITY MULTIPURPOSE WHEELED VEHICLE (HMMWV)



With the implementation of Lean manufacturing, LEAD was able to move from 100 vehicles per month to 300 vehicles per month in less than 60 days.

# Letterkenny Army Depot

## GROUND MOBILITY VEHICLE (GMV) RESET



← Before → After →

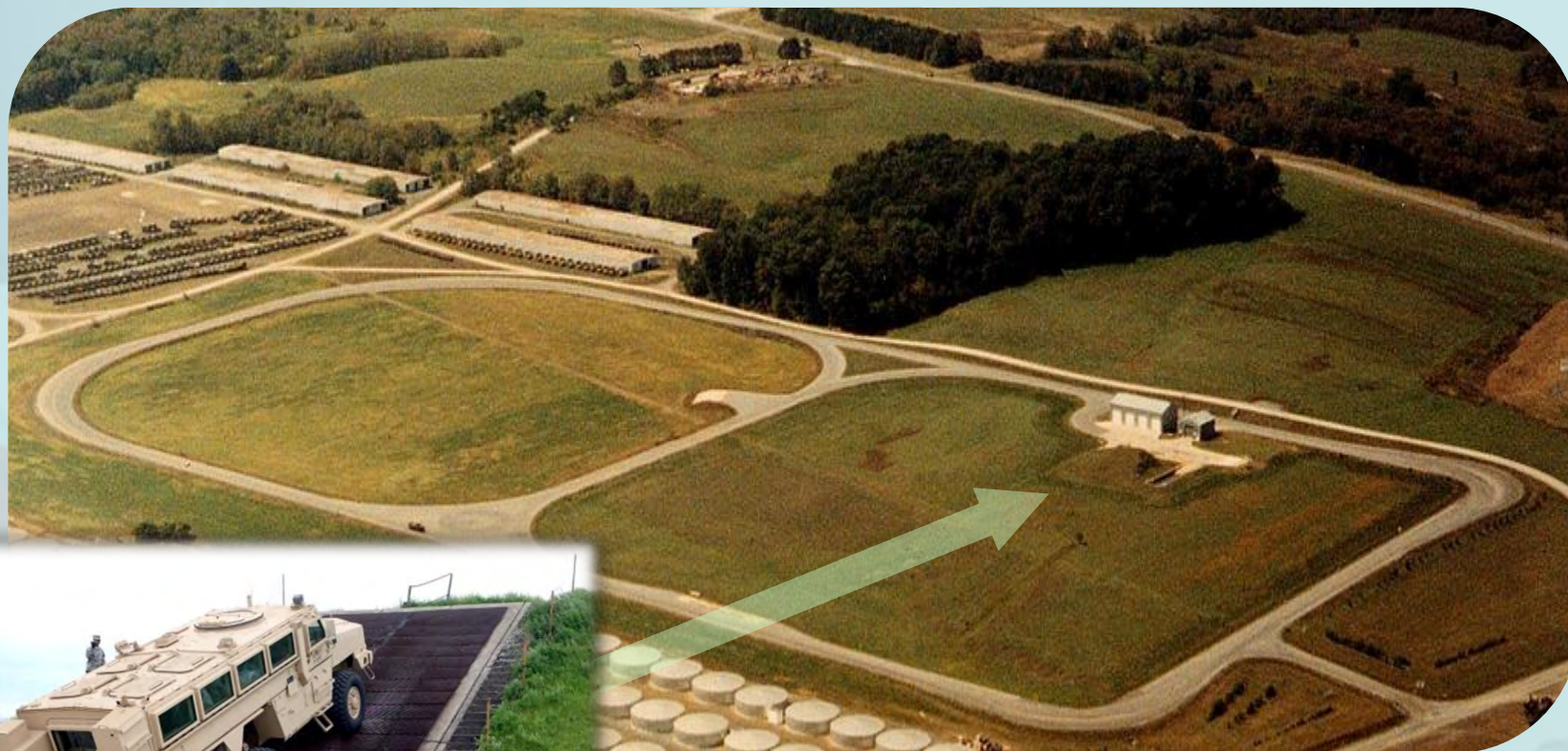


← Before → After →



# Letterkenny Army Depot

## WHEELED VEHICLE SUPPORT - TEST TRACK



1 mile oval test track  
9,000 square foot tire and wheel alignment shop

# Letterkenny Army Depot

## POWER GENERATOR RESET

Tactical Quiet Generator product line includes:

5kw, 10kw, 15kw, 30kw,  
60kw, 100kw and 150kw

LEAD is the Center of  
Technical Excellence for  
Generators



Current monthly production – 470 (funded FY12: 4765 assets)  
FY11 production: 5106 assets



# Letterkenny Army Depot

## AVIATION GROUND POWER UNIT (AGPU)

AGPU New Build Program

Service Life Extension Program (SLEP)  
and Reset Program



- Letterkenny is the AGPU Reset "Gold Site"
- All CONUS AGPUs will be reset at LEAD

Reset: Current monthly production = 5; authorized 64 each for FY12

New builds: monthly production = 8 starting in April 12; authorized 122 each for FY12 and 13

# Letterkenny Army Depot

## 2011 BRONZE SHINGO MEDALLION AVIATION GROUND POWER UNIT NEW BUILD



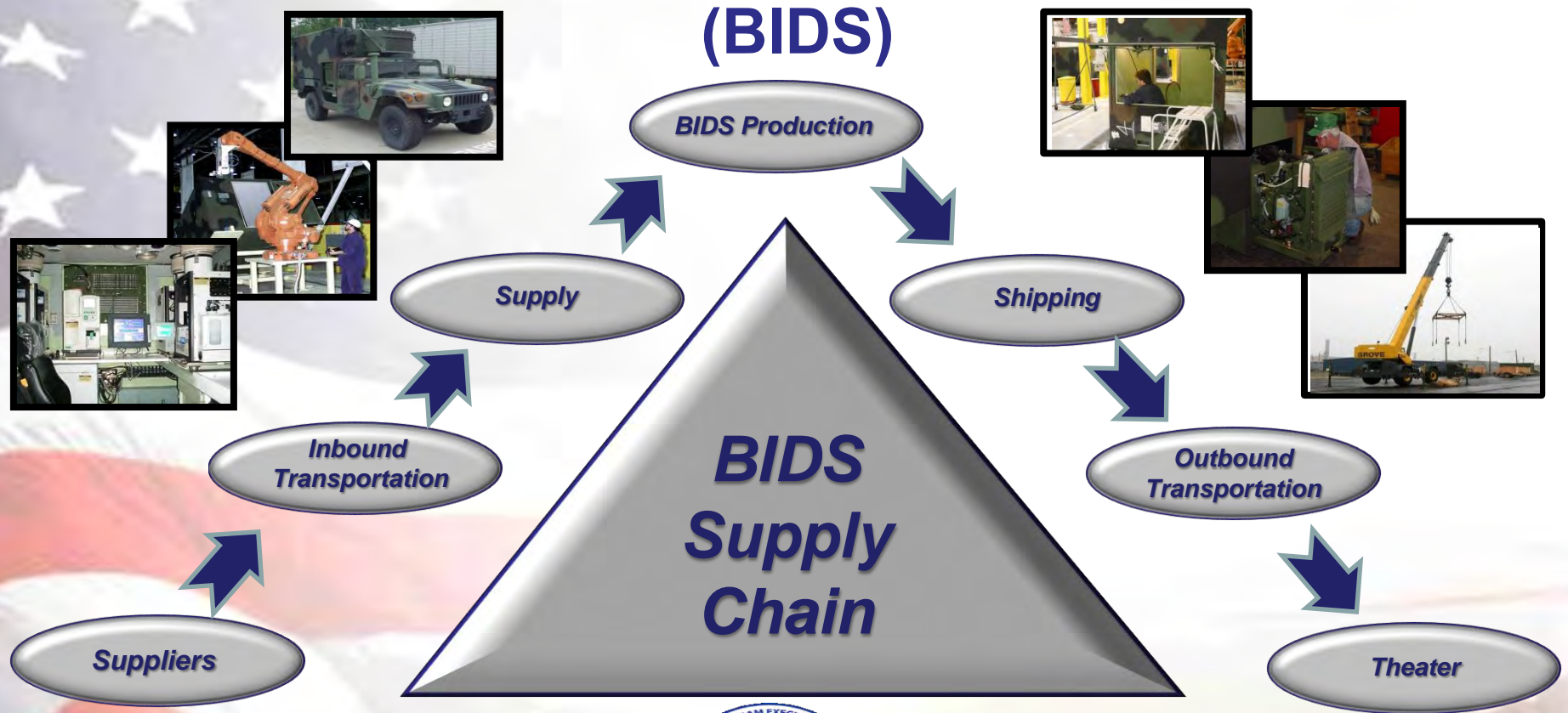
“This recognition demonstrates a continuous commitment to improvement and excellence. I am proud of LEAD employees’ commitment to the Warfighter, the flexibility and adaptability of the workforce, and their pride in workmanship.” –COL Cheri Provancha

“What an amazing commitment at all levels. Very impressive.”  
Paul Terry, Shingo Audit Team Leader



# Letterkenny Army Depot

## BIOLOGICAL INTEGRATED DETECTION SYSTEMS



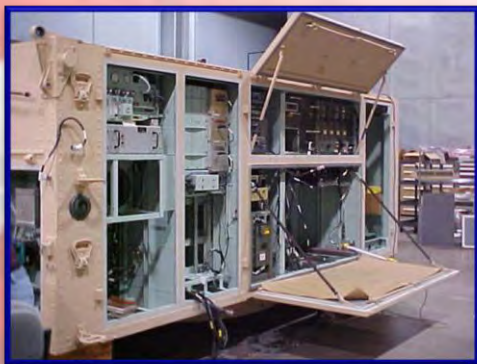
**HOMELAND DEFENSE**

# Letterkenny Army Depot

## SHELTER MAINTENANCE AND REPAIR



**AAI Shelters**



**Patriot Shelters**

- Receive used, worn and damaged shelters and return them to code A condition
- Value Stream Analysis studies reduced cost, streamlined production methods, and shortened turnaround time to field these vital assets to the Warfighter as quickly as possible at minimal cost



**250 and 280 Shelters**



**BIDS Shelters**

**Depot Maintenance Overhaul - System Rebuild/Modification - Fielding Support - Technical Training**

# Letterkenny Army Depot

## SOLDIER SUPPORT EQUIPMENT



Shower Refurb & Fielding

Mobile Kitchen New Build

Containerized Kitchens



# FORCE PROVIDER



New Build

Stock, Store and Issue

RESET



LEAD prototyped the mobile kitchen and developed National Maintenance Work Requirement criteria

# Letterkenny Army Depot

## MATERIAL HANDLING EQUIPMENT



10K AT Forklift

4K AT Forklift



# Letterkenny Army Depot

## CONSTRUCTION EQUIPMENT



**7.5 Ton Cranes**



**5 CY Scoop Loader**



**LEAD is the National Guard Bureau's "Depot of Choice"**

# Letterkenny Army Depot

## ADDITIONAL MECHANICAL CAPABILITIES

### **Shelter repair and assembly shops**

Total of 53,000 sq. ft.

12,000 sq. ft. shelter body repair area with 2x 5 ton cranes

Services range from minor repairs, upgrades, overhauls to complete rebuilding, including structural beams, sheet metal, punctures, electrical systems, seals and air conditioners

### **Heat Treatment**

2 x heat treat ovens - 18" w x 72" L x 24" high up to 2400 degrees.

### **High bay, heavy crane work space**

128,000 sq. ft. in 3 different buildings supporting cranes up to 10, 20 and 60 tons

### **Modular work cells/stations**

All work cells are configured for rapid start-up of new production lines or work cells

All work areas are supported with overhead cranes



# Letterkenny Army Depot

## CAPABILITIES OVERVIEW

- *Electronic systems integration*
- *Radar testing*
- *Antenna pattern testing*
- *Multi-layer circuit board repair*
- *Missile maintenance*
- *Diagnostic testing*
- *Wiring harness fabrication*
- *DIT-MCO testing*
- *Fiber optic cables*
- *J-STD-001 soldering*
- *Clean room environment*
- *Shielded room environment*
- *Electric motor rebuild*



- *Sheet metal fabrication*
- *Machine shop*
- *Armor kits*
- *Welding*
- *Metal pretreatment*
- *Metal plating & painting*
- *Generator overhaul*
- *Automotive recap*
- *Hydraulics*
- *Heat treatment*
- *Blasting*
- *Non-destructive testing*
- *Precision measurement*
- *Upholstery fabrication*
- *Weld testing/certification*
- *3-D printing*
- *Reverse engineering*



# Letterkenny Army Depot

## TECHNICAL PUBLICATIONS/ENGINEERING DESIGN

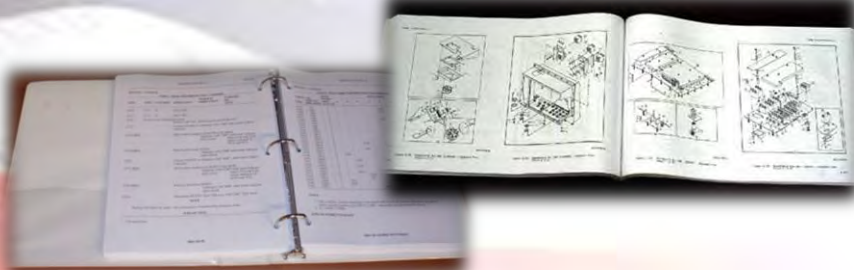
### Staff:

- Technical Writers
- Editors
- Desktop publishers
- Engineers
- CADD design pros



### 28 years experience:

- Depot Maintenance Work Requirements (DMWR)
- Technical Manuals (TM)
- Process Instructions
- Technical Data Packages (TDP)



### Publication capabilities:

- Extensible Markup Language (XML)
- CADD design software and reprographic services
- Microsoft Office, Adobe Acrobat, Adobe Photoshop

### Model Based Engineering (MBE) utilizing multiple CADD and parametric design platforms to:

- Analyze and design
- Develop reverse engineer systems to development test procedures
- Provide Technical Data Packages
- Develop performance standards
- Provide manufacture-ready engineering designs



# Letterkenny Army Depot

## ENGINEERING DESIGN AND DEVELOPMENT SUPPORT

### Experience

- Decades of experience teaming with program managers, major subordinate commands' material developers, engineering development teams, configuration control boards, and source selection evaluation boards

### Performance

- Proven performer in adding high value to the customer's program

### Flexibility

- Flexibility in designing and working at the shop level to fabricate prototype systems
- Work with customers to suggest changes for producibility enhancement and cost reduction

### Response

- Immediate response to changes in direction, requests for technical documentation, and support to the customer throughout all phases of the project including field logistics and technical support



**Special Forces Ground  
Mobility Vehicle**

## VALUE ENGINEERING

### Best Value

- Over five decades of production experience
- Institutional knowledge of DOD armament systems
- Instinctive ability to maximize weapon system *sustainment*

### Expert Service

- Experts in the field of service life enhancement
- Restore worn components to like-new condition
- Fraction of the cost of new acquisition

### Problem Solving

- Simplify customers' logistics problems
- Respond to part non-availability
- Reverse engineering and fabrication services



**MLRS Actuator Screw**  
Acquisition Cost: \$5,773  
Repair Cost: \$92



**PATRIOT Coupling**  
Acquisition Cost: \$13,909  
Repair Cost: \$85

# Letterkenny Army Depot

## SAWS



**'Raw stock prepping'**  
-Materials are sawed to length for processing in shops  
-Raw material stored in the ASRS building and pulled as required

Machine Type	Controls	Model	Sizes	Qty
--------------	----------	-------	-------	-----

SAW	CNC	SPARTAN	18"W x 140"L x 16"H	1
Saw	CNC	HEM	20"W x 120"L x 12"H	1
Saw	CNC	MARVAL: -60 DEG. TO 60 DEG. TILT	23"W x 140"L x 20H	1



# Letterkenny Army Depot

## SHEET MATERIAL MACHINING AND CUTTING

### Haas CNC Router

- Vacuum table
- Clamping magnet/quick change over
- Mills full sheets of material
- Currently used to drill and tap armor plating for gunner protection kits



Machine Type	Power	Capacity	Sizes	Qty
Cincinnati Laser:	4K WATT	1" THICK STEEL/.5" Thick Alum.	10'L x 5'W	2
STRIPIT Laser:	6K WATT	1.25" THICK STEEL/.5" THICK Alum.	13'L x 10'W	2
ESAB Plasma, Hi-Def:	600 AMP	6" THICK STEEL/4" Thick Alum.	12'Lx8'W	1
Punch Press:	.25 Thick	Trump Turret, .25" Thick Material	10"Lx4'W	1
Hangar Insert Machine:	NA	w/Hardware Attachments	Various	1
Stamp machines (2)				



# Letterkenny Army Depot



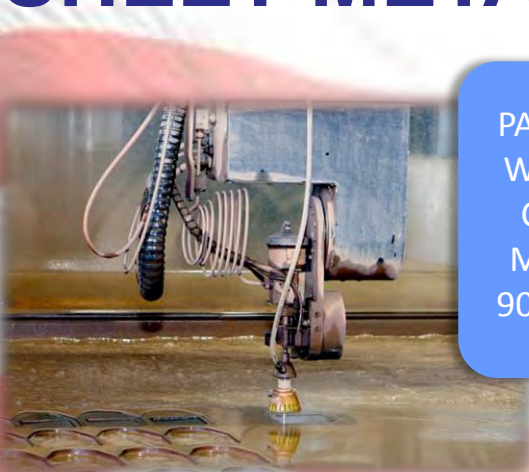
**FLOW-water jet**  
 -87,000 PSI 12'x6'  
 -55,000 PSI 4'x4'  
 -Cuts up to 8" thick  
 (steel, aluminum, wood, rubber, armor, composites, glass, plastic are common materials)



## Products include:

- Gunner protection kits
- Vehicle armor plating kits
- Armor boxes
- Avenger bustle boxes
- Buffalo kits

## SHEET METAL CUTTING



**PAR 5 Axis Water Jet Cutting Machine**  
 90,000 PSI



Machine Type	Pressure	Capacity	Sizes	Qty
PAR Waterjet:	90K PSI	8" THICK MATERIAL	12' L x 8'W	1
Flow Waterjet:	87K PSI	FLOW 8" Thick Material	12' L x 8'W	1
Flow Waterjet	55K PSI	FLOW 8" Thick Material	4' L x 4'W	1

# Letterkenny Army Depot

## BRAKE PRESS OPERATIONS



CNC STRIPIT Brake Press



-Heat inductor used to pre-heat material in order to prevent cracking in titanium armor and other thicker materials

Machine Type	Controls	Model	Sizes	Qty
CNC Strip-It Brake:	Easy Form	15' LONG BED	350 TONS OF PREASURE	1
CNC Strip-It Brake	PPEB	10' LONG BED	150 TONS OF PREASURE	1
CNC Triumph Brake:		4' LONG BED	100 TONS OF PREASURE	1
Davi Plate Roller				



# Letterkenny Army Depot

## Rapid Machining Cell



### Rapid Machining Cell

- Intuitive Programmable Machining
- Fast turnaround time for engineering prototype concepts to end product, often overnight
- Small parts runs

-As part of a Lean Green Belt Project, the purpose of the cell is to prototype and prevent production interruption

Machine Type	Controls	Model	Sizes	Qty
Mill	CNC	TM2	10"W x 45"L x 17"H	1
Mill	CNC	TRAK 5	12"W x 42"L x 36"H	1
Mill	CNC	TRAK 5 W/ Programmable Spindle	12"W x 48"L x 36"H	1
Mill	CNC	TRAK 7	15"W x 60"L x 36"H	1
Mill	MANUAL	BRIDGEPORT	10"W x 36"L x 36"H	1

# Letterkenny Army Depot

## Mills



**Ingersoll Gantry Mill**

-CNC  
-20'x8' Table  
-2 Heads/5 Axis  
-16,000 RPM Spindle Speed



**Ingersoll 6 Axis Bridge Mill**  
-CNC  
-10'x40' Table  
-(Currently being used to work on BIDS Shelters, PATRIOT Shelters and Launchers)  
- "1 to Infinity lot size"

Machine Type	Controls	Model	Sizes	Qty
--------------	----------	-------	-------	-----

Vertical Mill	CNC	TREE MILL	10"W x 36"L x 12"H	1
Vertical Mill	CNC	HAAS VF-2	14"W x 36"L x 16"H	1
Vertical Mill	CNC	HAAS VF-4	18"W x 52"L x 18"H	2
Vertical Mill	CNC	HAAS VF-5	26"W x 52"L x 20"H	4
Vertical Mill	CNC	HAAS VF-11	28"W x 120"L x 20"H	1
Vertical Mill	CNC	MATSURA	19"W x 55"L x 16"H	1
Vertical Mill	CNC	MAZAK	18"W x 52"L x 18"H	1

Horizontal Mill	CNC	EC 1600-5 AXIS	32"W x 64"L x 36"D	1
Horizontal Mill	CNC	K&T-6 AXIS		1
Bridge Mill	CNC	INGERSOLL	138"W x 500"L x 125"H	1
Bridge Mill	CNC	INGERSOLL	96"W x 264"L x 96" H	1



**Kearney & Trecker 5 Axis Horizontal Boring Mill**  
-CNC

**CNC HAAS EC 1600/4Axis Horizontal Boring Mill**

# Letterkenny Army Depot



## Mazak 7 Axis Integrex

- Lathe Mill Combo
- Reduces set up time
- Currently working on antenna positioner
- Simultaneous machining 5 axis's at one time capability



## Lathes



CNC  
Lathe/Turning  
Center

Machine Type	Controls	Model	Sizes	Qty
<b>LATHE</b>	CNC	TRL 1840	24"W x 48"L x 12"H	1
Machine Lathe	CNC	TRL 1630	24"W x 35"L x 12"D	1
<b>Machining Lathe</b>	CNC	MONARCH – W/BAR FEEDER	W/CHUCK 24"L x 10" DIAM. W/COLLET 24"L x 2" DIAM.	1
Machining Lathe	CNC	HAAS SL-20	W/CHUCK 24"L x 8" DIAM. W/COLLET 24"L x 2" DIAM.	1
Machining Lathe	CNC	HAAS TL-25	W/CHUCK 20"L x 15" DIAM. W/COLLET 24"L x 4" DIAM.	1
Machining Lathe	CNC	HAAS SL-30 - W/BAR FEEDER	W/CHUCK 35"L x 17" DIAM. W/COLLET 24"L x 4" DIAM.	1
Machining Lathe	MANUAL	STANDARD MODERN	60" x 16" DIAM.	1
Machining Lathe	MANUAL	STANDARD MODERN	60" x 15" DIAM.	4
Machining Lathe	MANUAL	STANDARD MODERN	60" x 19" DIAM.	1
Machining Lathe	MANUAL	STANDARD MODERN	38" x 22" DIAM.	1
Machining Lathe	MANUAL	HARDINGE	17" x 6" DIAM.	2
<b>Lathe/Mill</b>	CNC	MAZAK	15" DIA. X 30"L	1

# Letterkenny Army Depot

## ELECTRICAL DISCHARGE MACHINING

- Highly accurate
- Unique shaped machining
- Produces dies, jigs and fixtures

CNC Wire Electrical  
Discharge Machine



# Letterkenny Army Depot

## QUALITY CONTROL INSPECTION POINT

- Optical Comparator
- Rockwell Hardness Tester
- Two Coordinate Measuring Machines  
(1 4'x6' and 1 18"x36" accurate within .0002 of an inch)



- First article test
- First article inspection
- Tagged and followed through shop

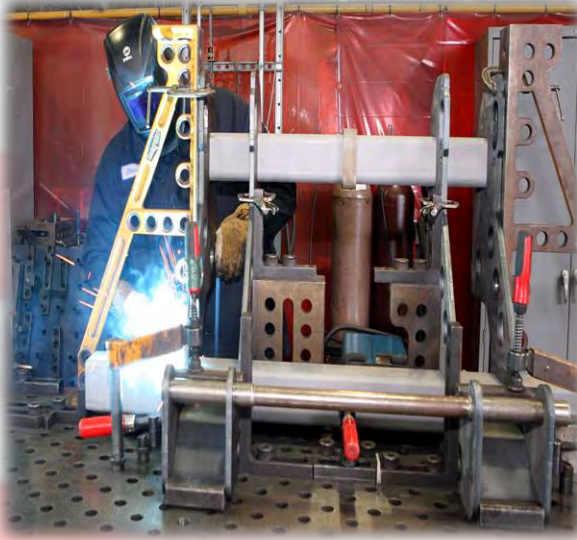
# Letterkenny Army Depot



## Weld

### Weld Shop Capabilities:

- Titanium Welding
- ROBOTIC Weld Cell
- BLU-CO Tables (Quick Set-up)
- Carbon/Air Arc
- Gas Welding
- Aluminum, Stud, and Fusion Welding (Gas or Flux)
- Tungsten Inert Gas (TIG), Gas Mechanical Inert Gas (MIG)
- Manual Metal Arc (Stick)
- Spot Welding 100,000 watts
- Stainless Steel



Machine Type	Model	Man.	Capability	Qty
Welding Machine	Handler 180/175	Hobart	Standard	2
Amperage Machine	300 GTSW	Thermo Dynamics	Arc w/TIG	1
Welding Machine	SyncroWave 350LX/351	Miller	Welder w/TIG/Runner/ Accessories	16
Welding Machine	Miller 251	Miller	Welder Dual w/W/SP Gun	3
Welding Machine	Millermatic 251	Miller	Welder MIG	2
Welding Machine	Millermatic 252	Miller	Welder w/MIG	27
Welding Machine	NDC150-000	Nelson	System Stud	1
Plasma Cutter	Spectrum 2050	Miller	Standard	2
Welding Machine	VTSL-3400	Versa	TIG MDL, Multi-select	1
Welding Machine	Dimension 452	Miller	MIG/TIG w/F&T	26
Welding Machine	Dynasty 350	Miller	Arc Welder	3

# Letterkenny Army Depot

## TUBING AND HOISING MANUFACTURING

Machine Type	Controls	Model	Sizes	Qty
CNC Tube Bender:	CNC	15' LONG BED	3" TUBING	1
RMD Tube Bender:	RMD	5' LONG BED	1.5" OD TUBING	1



**CNC Tubing Bender**

**Programmable for:**  
-Round stock/square stocks  
-Reversed engineer technology



**Hose Crimping Machine:**  
-Primarily used to make replacement hoses for material handling and construction equipment  
-Capable of attaching fittings to hoses up to 2" in diameter

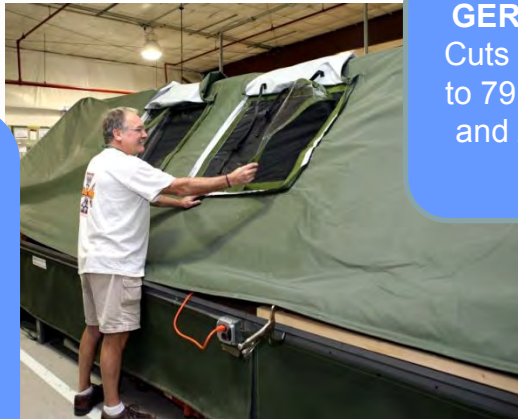
# Letterkenny Army Depot

## UPHOLSTERY



### Sheffield Cutting Machine

- Hot/Cold edge searing machine runs off full rolls of material
- Programs to cut to length and counts number of pieces



**GERBER cutter**  
Cuts materials up to 79 inches wide and 2.83 inches thick



### JUKI Stitching Machine

Programmable to make box stitches in any size from .75"x.75" to 3"x3"

- Refurbishing
- Furnishing work
- Sound and Water Proofing
- Cushion / Foam Replacements
- Crew Seats and Covers
- Canvas / Tent Liners
- Drapes and Curtains
- Vehicle storage solutions
- Straps

### CNC Cutter

### Snap welders

Machine Type	Controls	Man.	Sizes	Qty
Sewing Machine:	Single Stitch	CONSEW	30" Arm	4
Sewing Machine	Double Stitch		30" Arm	1
Sewing Machine	Heavy Duty	CONSEW	20" Arm	4
Sewing Machine	Standard	ARSTIEN	20" Arm	1
Sewing Machine	Box Snitchers	JUKI		2
Knife:	Hot/Cold	SHEFFIELD	NC	2
Measuring Machine:	Measuring	MERLIN	NC	1
Insert Machine:	Standard	GROMET		2
Band Saws:	Upright	DOALL		1
Fabric Cutter:	CNC	GERBER		1
Grommet Machine:	?	EDWARD SEGAL		1
Welder:	?	SINCLAIR		1
Pneumatic Foot Press	?	FASNAP		1



# Letterkenny Army Depot

## REVERSE ENGINEERING

Flat bed scanner checks pattern quality and reverse engineer parts.



FARO Arm (with laser attachment scanner)  
-8' measuring capability  
-Tolerance +/- .002

# Letterkenny Army Depot

## FABRICATION CAPABILITIES AND PRODUCTS – ARMOR PROTECTION KITS



**Objective Gunner's  
Protection Kits**



Metal Machining



Welding &  
Fabrication



Fabrication &  
Assembly



# Letterkenny Army Depot

## SPECIAL PROJECTS

- Material Inspections
- Packing and packaging
- Palletizing, boxing and crating
- Preservation wrapping
- Material pick up and delivery
- Loading/unloading
- Complete assembly

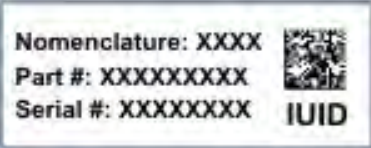



# Letterkenny Army Depot

## ITEM UNIQUE IDENTIFICATION (IUID) FABRICATION

**Fast**

**Efficient**

**Template "A":**  (2" wide x .75" high)  
Nomenclature: XXXX  
Part #: XXXXXXXXX  
Serial #: XXXXXXXX IUID

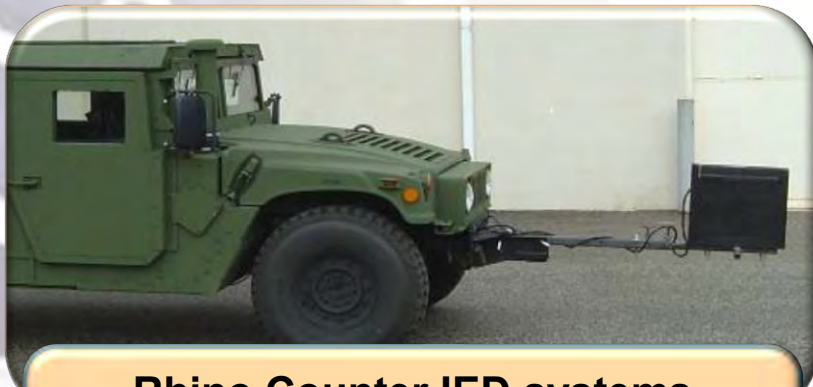
**Template "B":**  (2" wide x .75" high)  
Nomenclature: XXXX  
Part #: XXXXXXXXX  
Serial #: XXXXXXXX IUID

**Template "C":** Custom - Color, Design, and sizes determined by customer.

*Letterkenny is UIDworks© Center for Excellence*

# Letterkenny Army Depot

## FABRICATION PRODUCTS



### Rhino Counter IED systems Fabricated exclusively at LEAD

- Machine Shop fabricates housings and brackets.
- Electronics Shop fabricates cabling & control boxes.

*LEAD Rhino Team saved  
a crew from an EFP....  
Excellent Work!!!  
Eric N. Erickson Jr., PM Office  
IED Defeat*



### Mine Rollers



### Miscellaneous Small Parts

# Letterkenny Army Depot

## MATERIAL PREP AND PAINT

### Material Prep facilities

- 5 x drive blast booths with various blast medias available
- Large drive-in wash rack facility
- 2 x wash racks
- Dedicated 65,000 sq. ft. building to high volume vehicle painting (in-line wash rack, sanding booths and paint lines)
- 7 x drive-in paint booths with various paint capability specializing in CARC paints
- 4 x metal pre-treat systems
- 3 x paint lines / systems



# Letterkenny Army Depot

## STAR4D TRAINING INSTITUTE



### STAR4D Painter Training Institute

- Partnership with the University of Northern Iowa (UNI), the Iowa Waste Reduction Center and Tiburon
- Curriculum follows UNI's Spray Technique Analysis and Research for Defense (STAR4D) methodology

# Letterkenny Army Depot

## ELECTRONICS CAPABILITIES

- Electronic systems integration
- Radar testing
- Environmental chamber testing
- Missile maintenance
- Diagnostic testing
- Wiring harness fabrication
- DIT-MCO testing
- Fiber optic cables
- J-STD-001 soldering
- Multi-layer circuit board repair
- Dielectric fluid reprocessing
- Clean room environment
- Shielded room environment
- Electric motor rebuild





# Letterkenny Army Depot

## FULL SPECTRUM ELECTRONIC REMANUFACTURING, REPAIR, FABRICATION AND TESTING



**Integrated System  
Remanufacturing / Testing**



**Electronic / Mechanical  
Manufacturing and Repair**



**Environmentally Controlled  
Clean Rooms**



**Micro Soldering and Circuit  
Card Repair**



**Wiring Harness Testing  
and Repair**

# Letterkenny Army Depot

## CIRCUIT CARD TESTING AND REPAIR CAPABILITY

Circuit boards having up to six layers are processed and repaired or reconstructed



J-STD-001 soldering and micro miniature soldering performed

General Electric Test Set (GETS) consoles provide state-of-the-art technology in diagnostic circuit card testing

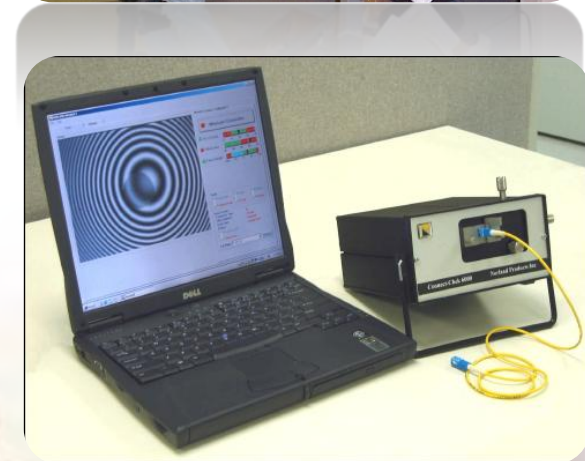


Inspection, disassemble, micro blasting / cleaning and repair

Power zoom stereo- microscope

## CABLE AND HARNESS FABRICATION

- Full service wire harness repair and fabrication on assemblies ranging from small jumpers to multi-branched assemblies
- 45,000 square feet
- Reel and store cables up to 4000 feet in length
- Thermal shrink and laser etch marking manufacturing
- Harness layout process
- Reel-to-reel spooling for fiber optic and copper cables
- Assembly of connectors, pins and hardware
- T Foca fiber optic termination and testing
- DIT-MCO testing to include high voltage
- Environmental thermal shock testing up to 210c
- Final mechanical installation, testing and inspection
- Splicing, assembly and attachment of connectors
- Transmission efficiency testing
- IPC 620 and J-STD-001 certified technicians



# Letterkenny Army Depot

THE ONLY ARMY DEPOT WITH INDEPENDENT RECEIVING,  
STORAGE, AND SHIPPING



Inventory accuracy of 98% is maintained through the LMP/SAP cycle count process

# Letterkenny Army Depot

## SHELTER HANDLING EQUIPMENT



Letterkenny is fully equipped to handle any size container/shelter



# Letterkenny Army Depot

## THEATER READINESS MONITORING FACILITY

The Lightner Missile Complex is a new 90,500 square foot, state-of-the-art PATRIOT and Homing All the Way Killer (HAWK) facility capable of missile storage, disassembly, testing, and recertification in support of the War fighter



# Letterkenny Army Depot

## THEATER READINESS MONITORING

### MISSILE MAINTENANCE OPERATIONS

- Missile disassembly and assembly
- Missile safety test
- PATRIOT missile facility 560 test station
- De-canning and canning of missiles
- Explosive handling
- PATRIOT Missile Integration Test System (PMITS) test
- Quality



### SPECIALIZED EQUIPMENT

- Built-in temperature, humidity, dust and electronic static discharge controls
- Lightning detection system
- De-canning RAM systems (DRS)
- PMITS test station
- 5-ton overhead cranes
- Lightning warning and protection
- Forklifts

# Letterkenny Army Depot

## SECURE ASSET PRESERVATION AND STORAGE



Available Outside Storage Lot





# Letterkenny Army Depot

## CERTIFIED QUALITY MANAGEMENT SYSTEM

Quality System Manual



Quality System Procedures



*Letterkenny Army Depot Quality Policy*

**LEAD's commitment is to provide products and services that meet or exceed customer requirements by continually measuring, evaluating, and improving our processes for greatest customer satisfaction.**

QSP 1 - Management Responsibility	QSP 15 - Statistical Process Control
QSP 2 - Control of Documents	QSP 16 - Servicing
QSP 3 - Control of Records	QSP 17 - Continuous Improvement
QSP 4 - Internal Audits	QSP 18 - Work Environment
QSP 5 - Control of Nonconforming Product	QSP 19 - Purchasing
QSP 6 - Corrective/Preventive Action	QSP 20 - Management Review
QSP 7 - Control of Monitoring and Measuring Devices	QSP 21 - Electrostatic Discharge
QSP 8 - Customer Satisfaction	DPA SOP 702-12, Certification Criteria for Inspectors
QSP 9 - Identification and Traceability (Tagging)	DPA SOP 702-13, External Product Quality Deficiency Report
QSP 10 - Shelf-Life	DPA Work Instr 1 - Inspection of Local Procurement Receipts
QSP 11 - Workload Acceptance	DPA Work Instr 2 - Sheet Metal, Machine Shop, Upholstery Inspector
QSP 12 - Customer Property	DPA Work Instr 3 - PQDR/SDR Processing
QSP 13 - Process Control	DPA Work Instr 5 - FMS Repair and Return Assets
QSP 14 - Inspection and Testing	DPA Work Instr 6 - MKT RESET: Weld Inspection Sampling Plan
	DPA Work Instr 7 - Paint Surveillance



### LEAD GOALS Water Conservation Energy Conservation Pollution Reduction

#### Water Conservation Objectives:

- Conserve and reduce water usage to include recycling of water for reuse
- Reduced Potable Water usage by 40% since 2007



#### Energy Conservation Objectives:

- Develop and implement an energy conservation and reduction program
- Supply all energy for depot operations from renewable resources by 2033

#### Projects Underway:

Recycle Vehicle Wash Water  
Reuse Industrial Discharge Water

High Speed Overhead Doors  
Heating/Air Conditioning Upgrades  
Lighting Retrofits  
Electric Vehicle Purchases

Wind Turbines  
Solar Photovoltaic Farm  
Shale Gas Development  
Geothermal Heat Pumps  
SolarWalls  
Biomass Boiler  
Municipal Solid Waste to Energy

Pallet Recycling  
Paint Emission Reductions  
Storage Tank Replacements



#### Pollution Reduction Objectives:

- Achieve 100% diversion of solid waste (to include hazardous waste) from landfills or incinerators by 2033
- Eliminate the need for a Title V Air Quality Permit by 2018



# Letterkenny Army Depot

## LEAD SAFETY COMMITMENT

### Safety Mission Statement

Our mission is to work together as a team ensuring the safety and health of every person at Letterkenny Army Depot

**THE COMMITMENT**

**VPP**  
Voluntary Protection Programs  
An OSHA Cooperative Program

**SAFETY  
Our #1  
Priority!**

**A Partnership for Excellence  
in Safety**

The graphic features a stylized American flag background with stars and stripes. The text is arranged in a central layout with 'THE COMMITMENT' at the top, the VPP logo in the middle left, and 'SAFETY Our #1 Priority!' in the middle right. At the bottom, it reads 'A Partnership for Excellence in Safety'. The background of the entire slide also shows a blurred image of people working in an industrial setting.

# Letterkenny Army Depot

## LEAD RECRUITMENT AND PLACEMENT

Letterkenny employs various recruitment and placement programs, to included partnerships with local technical schools and colleges.

Student Temporary Employment Program (STEP)

Student Career Experience Program (SCEP)

Veterans Recruitment Appointment (VRA)

Upward Mobility Program

### **LEAD CPAC has contacts/agreements with:**

- Hagerstown Community College
- Harrisburg Area Community College
- ITT
- York Technical Institute
- Pennsylvania College of Theology
- Shippensburg University
- Wilson College
- Widener University
- York College of Pennsylvania
- Penn State
- Franklin County Career Technology Center
- Williams Free School of Mechanical Trade
- Thaddeus Stevens College of Technology

# Letterkenny Army Depot

## WHAT YOU SHOULD KNOW

- ✓ LEAD has a certified Quality Management System, Environmental Management System and a Safety Management System
- ✓ LEAD's customer satisfaction is consistently at 98% or above
- ✓ LEAD implemented the most successful LMP/SAP transition in the Army and continue to make strides in utilizing the LMP tools
- ✓ LEAD's productivity rate is 1620 direct labor hours
- ✓ LEAD invested \$107M in infrastructure over the past four years
- ✓ LEAD is the only Army depot that can control your shipping and receiving

# Letterkenny Army Depot

COMMUNITY  
OUTREACH

## WOUNDED WARRIOR WHITE-TAILED DEER & TURKEY HUNTING

### ARMED FORCES DAY



### HUNT OF A LIFETIME



### MAKE A DIFFERENCE



### CO-OP



### FOOD BANK & TOY DRIVE



### QUARTERLY BLOOD DRIVES



### BOOK DRIVE



### SILENT AUCTION

### ANGEL TREES



### POLICE FIRE MUTUAL AID

# #1 EMPLOYER IN SOUTH CENTRAL PA

# Letterkenny Army Depot

## HOOAH!

- Named by BRAC Commission in 2005 as the #1 depot for tactical wheeled vehicles for military value



- VPP Star Certification 2012

- Secretary of Defense PBL of the Year Award 2011

- Supplier Excellence Award 2011

- Chief of Staff of the Army Combined Logistics Excellence Award 2010



- BAE Chairman's Bronze Award 2010

- Secretary of the Army Awards:
  - Environmental Restoration FY02
  - Environmental Quality FY06
  - Environmental Sustainability FY09- Industrial Installation

2009  
JDM Excellence Award



for Outstanding Contributions to  
Depot Maintenance

**MRAP/MMPV Team**



Joint Group on  
Depot Maintenance



**Shingo Winner  
AGPU**



**2011**

**Combined Logistics  
Excellence Award**

Biological Integrated  
Detection Systems



Superior Performance  
of Duty in Depot  
Maintenance Excellence  
Resulting in Improved  
Combat Readiness  
**2009**

10 TON



**Shingo Winner  
PATRIOT  
2008**




**Shingo Winner  
HMMWV  
2008**




**Shingo Winner  
HMMWV  
2007**




**Shingo Winner  
Generators  
2007**




**Shingo Winner  
BIDS Shelters  
2008**




**Shingo Winner  
Patriot  
2009**



**70 Years of Support and Capability**

