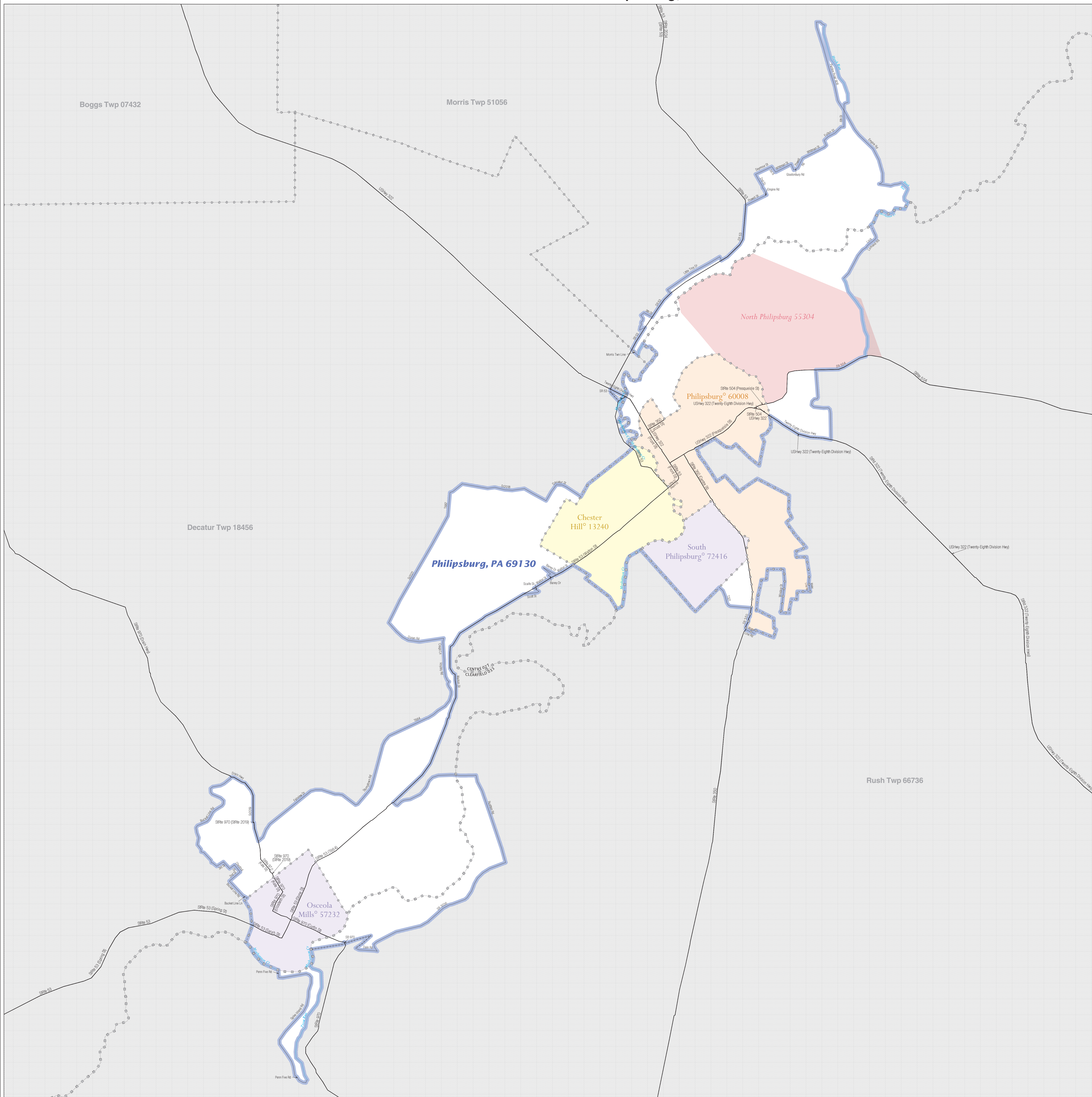


# URBAN CLUSTER OUTLINE MAP (CENSUS 2000)

## Philipsburg, PA



### LEGEND

<b>SYMBOL DESCRIPTION / SYMBOL</b>	<b>NAME STYLE</b>
International * * * *	<b>CANADA</b>
AIR (Federal) <sup>1</sup> - - - - -	<b>L'ANSE RES (1880)</b>
Trust Land / Home Land - - - - -	<b>T1880</b>
OTSA / TDSA / ANVSA - - - - -	<b>KAW OTSA (5340)</b>
Tribal Subdivision - - - - -	<b>SHONTO (620)</b>
AIR (State) <sup>1</sup> - - - - -	<b>Tama Res (4125)</b>
SDASA - - - - -	<b>Lumbee (9815)</b>
ANRC - - - - -	<b>NANA ANRC 52120</b>
Urbanized Area [Blue Shaded Area]	<b>Baltimore, MD 04843</b>
Urban Cluster [Blue Outline]	<b>Toole, VT 88057</b>
State or Statistically Equivalent Entity [Dashed Line]	<b>NEW YORK 36</b>
County or Statistically Equivalent Entity [Dotted Line]	<b>ERIE 029</b>
Minor Civil Division (MCD) <sup>1</sup> [Dotted Line]	<b>Pike Twp 59742</b>
Census County Division (CCD) [Dotted Line]	<b>Kula CCD 91890</b>
Consolidated City [Dotted Line]	<b>MILFORD 47500</b>
Incorporated Place <sup>1</sup> [Dotted Line]	<b>Rome 63418</b>
Census Designated Place (CDP) [Dotted Line]	<b>Zena 84187</b>

Where international, state, county, and/or MCD/CCD boundaries coincide, the map shows the boundary symbol for only the highest ranking of these boundaries.

ABBREVIATION REFERENCE: AIR = American Indian Reservation; Trust Land = OT-Reservation Trust Land; Home Land = Home-Reservation Home Land; OSA = Oklahoma Tribal Statistical Area; TDSA = Tribal Designated Statistical Area; ANVSA = Alaska Native Village Statistical Area; Tribal Subdivision = American Indian Tribal Subdivision; SDASA = State Designated American Indian Statistical Area; ANRC = Alaska Native Regional Corporation

<b>FEATURE</b>	<b>SYMBOL</b>	<b>FEATURE</b>	<b>SYMBOL</b>
Major Roads	[Solid Line]	Stream or Shoreline <sup>2</sup>	[Blue Line]
Other Roads <sup>3</sup>	[Dashed Line]	Large River or Lake	[Blue Area]
Railroad <sup>1</sup>	[Dotted Line]	Military Installation	[Fort Hood]
Pipeline or Power Line <sup>2</sup>	[Dotted Line]	Outside Subject Area	[Grey Area]
Ridgeline or other physical feature <sup>2</sup>	[Dotted Line]	Major Airports	[Airplane]
Nonvisible Boundary <sup>2</sup>	[Dotted Line]		
Other Boundary Feature <sup>2</sup>	[Dotted Line]		

<sup>1</sup> A "1" following an entity name indicates that the entity is also a false MCD; the false MCD name is not shown.

<sup>2</sup> Feature shown only when coincident with the subject urbanized area / urban cluster boundary.

<sup>3</sup> Feature coincident with the boundary of an entity other than the subject urbanized area / urban cluster.

The urban areas (urbanized areas and urban clusters) are defined using Census 2000 blocks and population data for statistical purposes only. The detailed criteria for defining urban areas were published in the Federal Register (67 FR 11663). All legal boundaries and names are as of January 1, 2000. The boundaries shown on this map are for Census Bureau statistical data collection and tabulation purposes only; their depiction and designation for statistical purposes does not constitute a determination of jurisdictional authority or rights of ownership or entitlement.

Source: U.S. Census Bureau's TIGER database  
 Projection: State-based Albers' Equal Area  
 U.S. DEPARTMENT OF COMMERCE Economics and Statistics Administration U.S. Census Bureau

