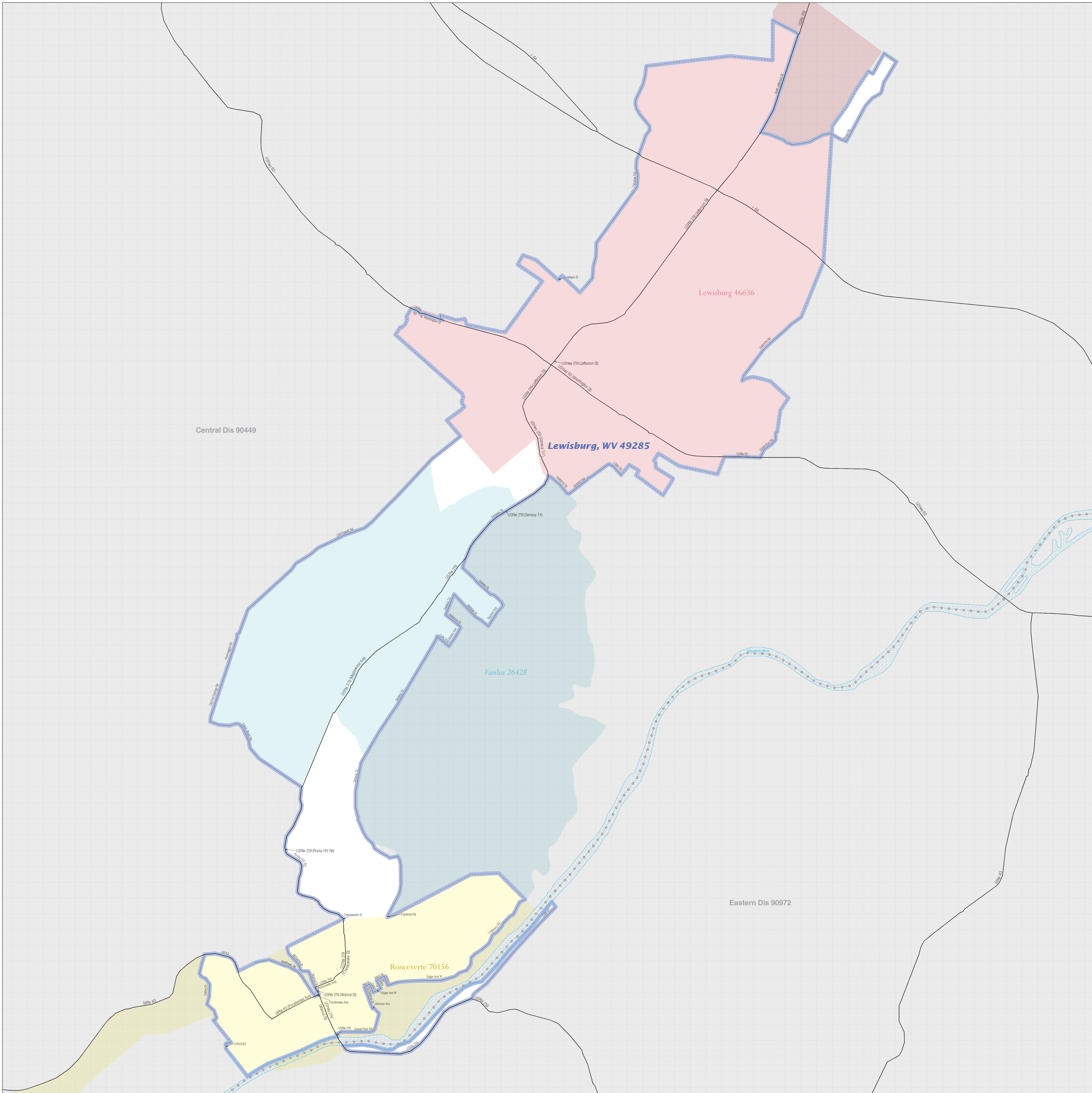


URBAN CLUSTER OUTLINE MAP (CENSUS 2000) Lewisburg, WV



LEGEND

SYMBOL DESCRIPTION / SYMBOL	NAME STYLE
International * * * *	CANADA
AIR (Federal) ¹ - - - - -	L'ANSE RES (1880)
Trust Land / Home Land - - - - -	T1880
OTSA / TDSA / ANVSA - - - - -	KAW OTSA (5340)
Tribal Subdivision - - - - -	SHONTO (620)
AIR (State) ¹ - - - - -	Tama Res (4125)
SDASA - - - - -	Lumbee (9815)
ANRC - - - - -	NANA ANRC 52120
Urbanized Area [Blue Shaded Area]	Baltimore, MD 04843
Urban Cluster [Blue Outline]	Tooele, VT 88057
State or Statistically Equivalent Entity [Thick Blue Outline]	NEW YORK 36
County or Statistically Equivalent Entity [Thin Blue Outline]	ERIE 029
Minor Civil Division (MCD) ¹ [Dashed Blue Outline]	Pike Twp 59742
Census County Division (CCD) [Dotted Blue Outline]	Kula CCD 91890
Consolidated City [Red Outline]	MILFORD 47500
Incorporated Place ¹ [Red Outline]	Rome 63418
Census Designated Place (CDP) [Red Outline]	Zena 84187

Where international, state, county, and/or MCD/CCD boundaries coincide, the map shows the boundary symbol for only the highest ranking of these boundaries.

ABBREVIATION REFERENCE: AIR = American Indian Reservation; Trust Land = Off-Reservation Trust Land; Home Land = Homeless Home Land; OTSA = Oklahoma Tribal Statistical Area; TDSA = Tribal Designated Statistical Area; ANVSA = Alaska Native Village Statistical Area; Tribal Subdivision = American Indian Tribal Subdivision; SDASA = State Designated American Indian Statistical Area; ANRC = Alaska Native Regional Corporation

FEATURE	SYMBOL	FEATURE	SYMBOL
Major Roads	[Thick Solid Line]	Stream or Shoreline ²	[Blue Line]
Other Roads ²	[Thin Solid Line]	Large River or Lake	[Blue Area]
Railroad ¹	[Dashed Line]	Military Installation	[Fort Hood]
Pipeline or Power Line ²	[Dotted Line]	Outside Subject Area	[Grey Area]
Ridgeline or other physical feature ²	[Dashed Line]	Major Airports	[Airplane Symbol]
Nonvisible Boundary ²	[Dotted Line]		
Other Boundary Feature ²	[Dashed Line]		

¹ A "1" following an entity name indicates that the entity is also a MCD; the false MCD name is not shown.

² Feature shown only when coincident with the subject urbanized area / urban cluster boundary.

³ Feature coincident with the boundary of an entity other than the subject urbanized area / urban cluster.

The urban areas (urbanized areas and urban clusters) are defined using Census 2000 blocks and population data for statistical purposes only. The detailed criteria for defining urban areas were published in the Federal Register (67 FR 11663). All legal boundaries and names are as of January 1, 2000. The boundaries shown on this map are for Census Bureau statistical data collection and tabulation purposes only; their depiction and designation for statistical purposes does not constitute a determination of jurisdictional authority or rights of ownership or entitlement.

Source: U.S. Census Bureau's TIGER database
 Projection: State-based Albers' Equal Area
 U.S. DEPARTMENT OF COMMERCE Economics and Statistics Administration U.S. Census Bureau

