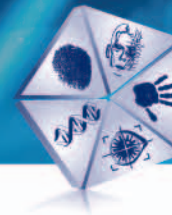


[www.biometrics.dod.mil](http://www.biometrics.dod.mil)



**BIMA** BIOMETRICS  
IDENTITY  
MANAGEMENT  
AGENCY



**DEMONSTRATION CENTER**

 **BIMA** BIOMETRICS  
IDENTITY  
MANAGEMENT  
AGENCY

1901 South Bell St. • Suite 900 • Arlington, VA 22312  
DISPLAY OR DISCUSSION OF NAMES OF COMMERCIAL VENDORS AND SUPPLIERS  
DOES NOT CONSTITUTE ENDORSEMENT BY THE DOD OR THE BIMA.



### The Demonstration Center

- Allows visitors to see and touch biometric systems that are used for physical access, logical access, and the identification of known or suspected terrorists and enemy combatants.
- Demonstrates systems that are currently in use and others that may be applied in the DoD in the near future.
- Will be continually updated to keep abreast of changing technologies and new implementations throughout DoD.
- Provides an overview of current Biometric Identity Management Agency activities.



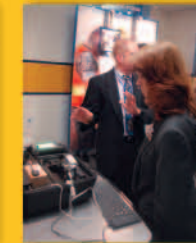
## 1. Physical Access

- The Hirsch RUU-201 system is an example of HSPD-12 compliant use of biometrics for access.
- It is fully integrated into the room access control system.
- It enables authorized users to securely enter the Demonstration Suite using their Common Access Card (CAC), PIN, and fingerprint.
- The next generation of the CAC will allow access using only the card and a fingerprint, increasing throughput while maintaining security.



## 2. Maritime Operations

- The Navy has provided a Mission Oriented Biometric Software (MOBS) Jump Kit.
- The Navy will be using similar systems for identification of crewmembers of vessels in U.S.-controlled waters.
- The U.S. Coast Guard is pursuing similar systems.



### 3. Base Access

- The Defense Biometrics Identification System (DBIDS) is in use at some DoD facilities in Asia, Europe, and the United States. It can incorporate the use of fingerprints along with a card.
- DBIDS is used to verify identities of DoD employees as well as foreign nationals, retirees, and others with authorized routine access to a US facility.
- The DBIDS program is run by the Defense Manpower Data Center (DMDC).
- BISA (Biometric Identification System for Access) is a biometrics-based card issuance and verification system used at 10 locations in Southwest Asia. It requires the use of fingerprint, iris, or face recognition biometrics for verification.



### 4. Current Operations



**The Biometrics Automated Toolset (BAT) is a laptop-based system that:**

- Captures fingerprint, iris, facial, and biographic data.
- Performs matches against stored watchlists.
- Stores data on a central server in a secure network.
- Transmits data to central repository.
- Is currently used by Army, Marines, and Special Operations Forces deployed in Bosnia, Iraq, and Afghanistan.
- Is used in fixed and mobile locations.
- Is a project managed by PM-Biometrics (PEO-EIS).

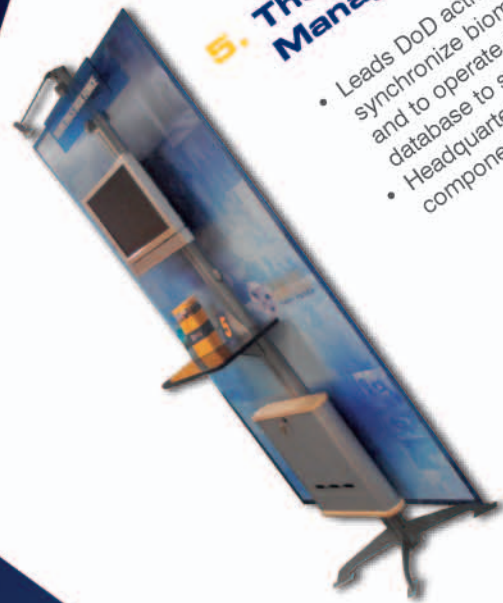
**The Handheld Interagency Identity Detection Equipment (HIIDE):**

- Collects biometric data in the field including fingerprint, iris, facial and biographical data.
- Connects to BAT to transmit data.
- Matches inputs against a biometric watch list of up to 10,000 individuals.
- Is a project managed by PM-Biometrics (PEO-EIS).



## 5. The Biometric Identity Management Agency

- Leads DoD activities to program, integrate, and synchronize biometric technologies and capabilities and to operate and maintain DoD's authoritative database to support the National Security Strategy.
- Headquartered in Arlington, Va., with an operations component and database in Clarksburg, W.Va.



## 6. Emerging Technologies

### Face Recognition:

- Can be used in surveillance applications.
- Digital camera tracks facial characteristics.
- Measures the peaks and valleys of the face, including the tip of the nose and depth of the eye sockets.
- Possible airport and embassy security of the future.
- Cameras that scan a crowd and match faces to a database of known or suspected terrorists and criminals.
- Similar systems in use in some casinos.
- Law enforcement using face recognition in United States.
- The FaceVacs system software is manufactured by Cognitec and uses off-the-shelf cameras and computers.



## 7. Facility Access

### Enrollment station:

- Monitors Hirsch RUU-201 access control system.
- Where new users are enrolled.
- Always located inside the secure area.
- Could be configured to work with fire, smoke, and flood alarm systems.
- Upgradeable as CAC evolves to next generation.

### Hand Geometry:

- The IR HandKey II hand geometry system is in use at manned and unmanned gates at two U.S. Air Force Bases.
- It measures the precise shape of the hand, and is always used in conjunction with a PIN or card (two-factor authentication).

