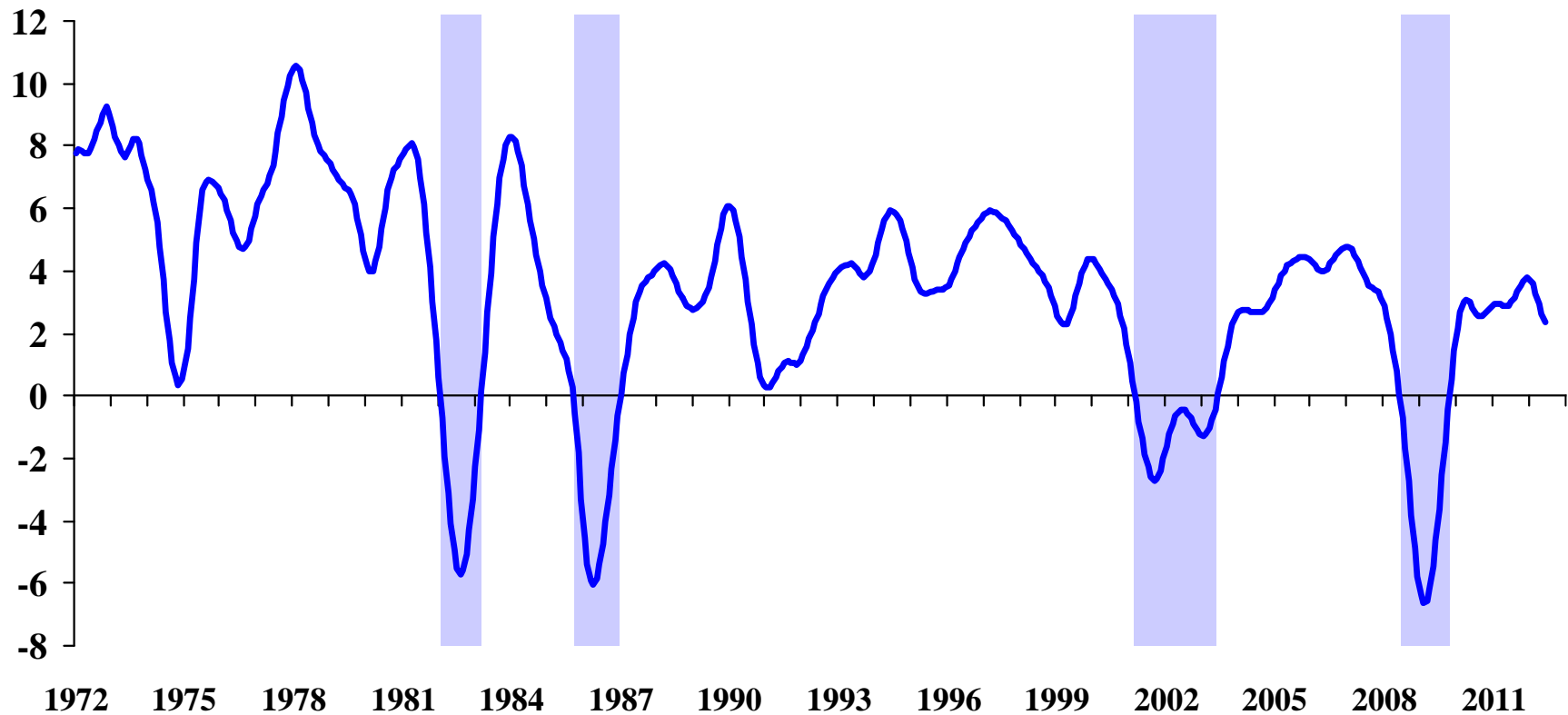




Texas Business-Cycle Index

Month/Month,
SAAR

TX recession
Index 1971=100 (Jul=2.37)



Source: FRB Dallas

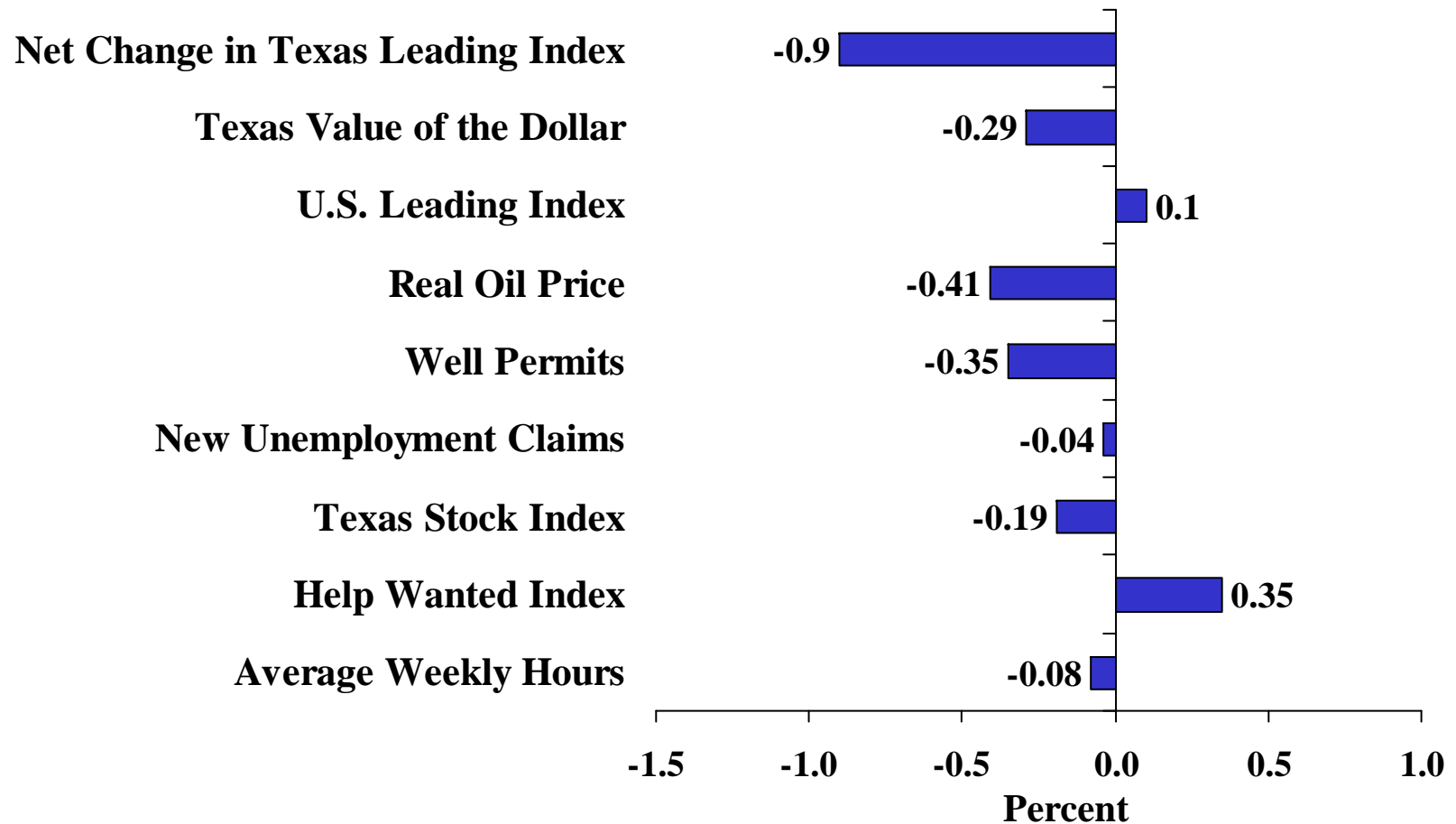
<http://www.dallasfed.org>



Change in Texas Leading Index

Net Contributions of Components

3-month change: May - June - July



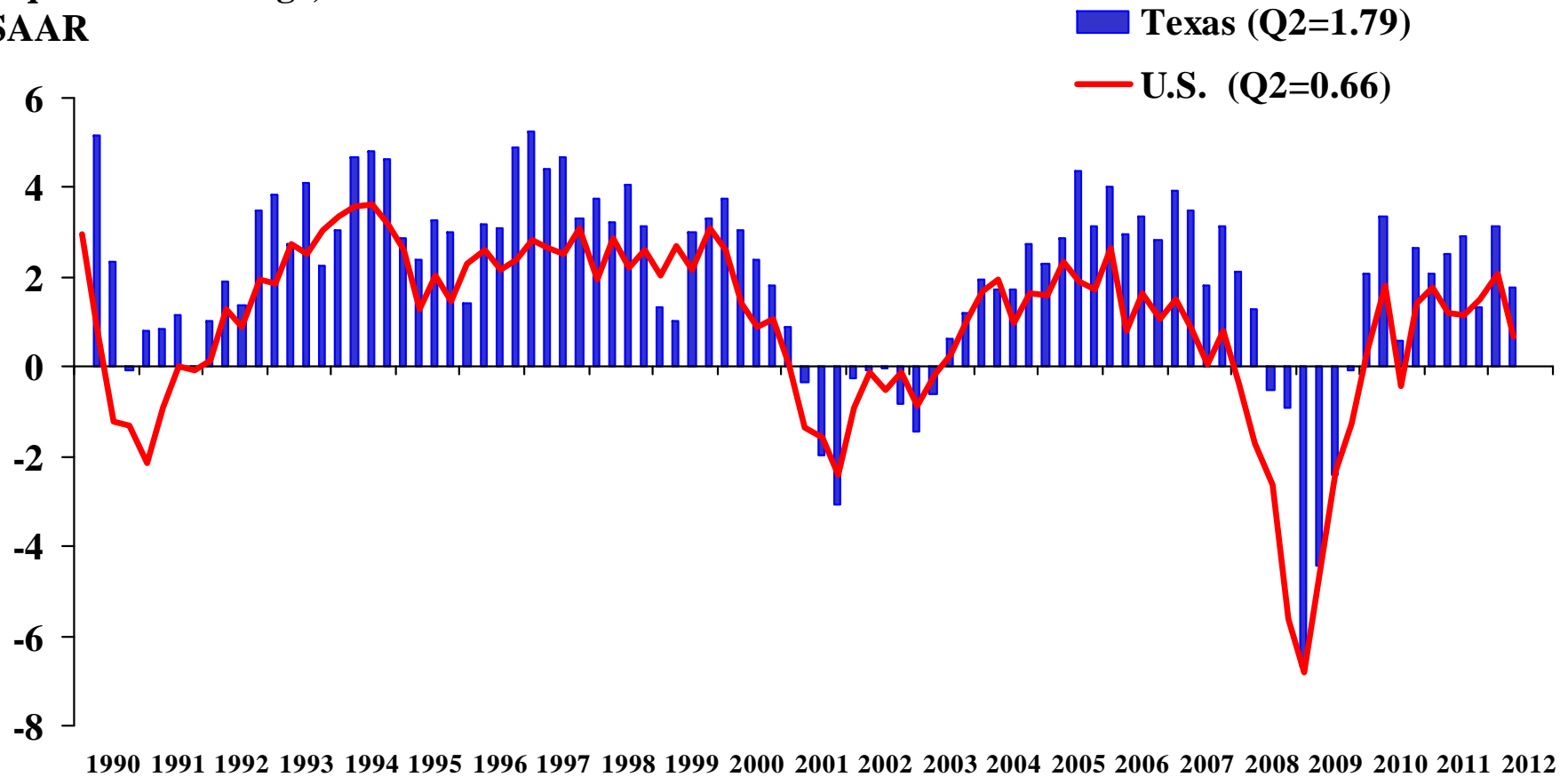
Source: FRB Dallas

<http://www.dallasfed.org>



Texas Total Nonfarm Employment Quarterly Growth

1-quarter % change,
SAAR



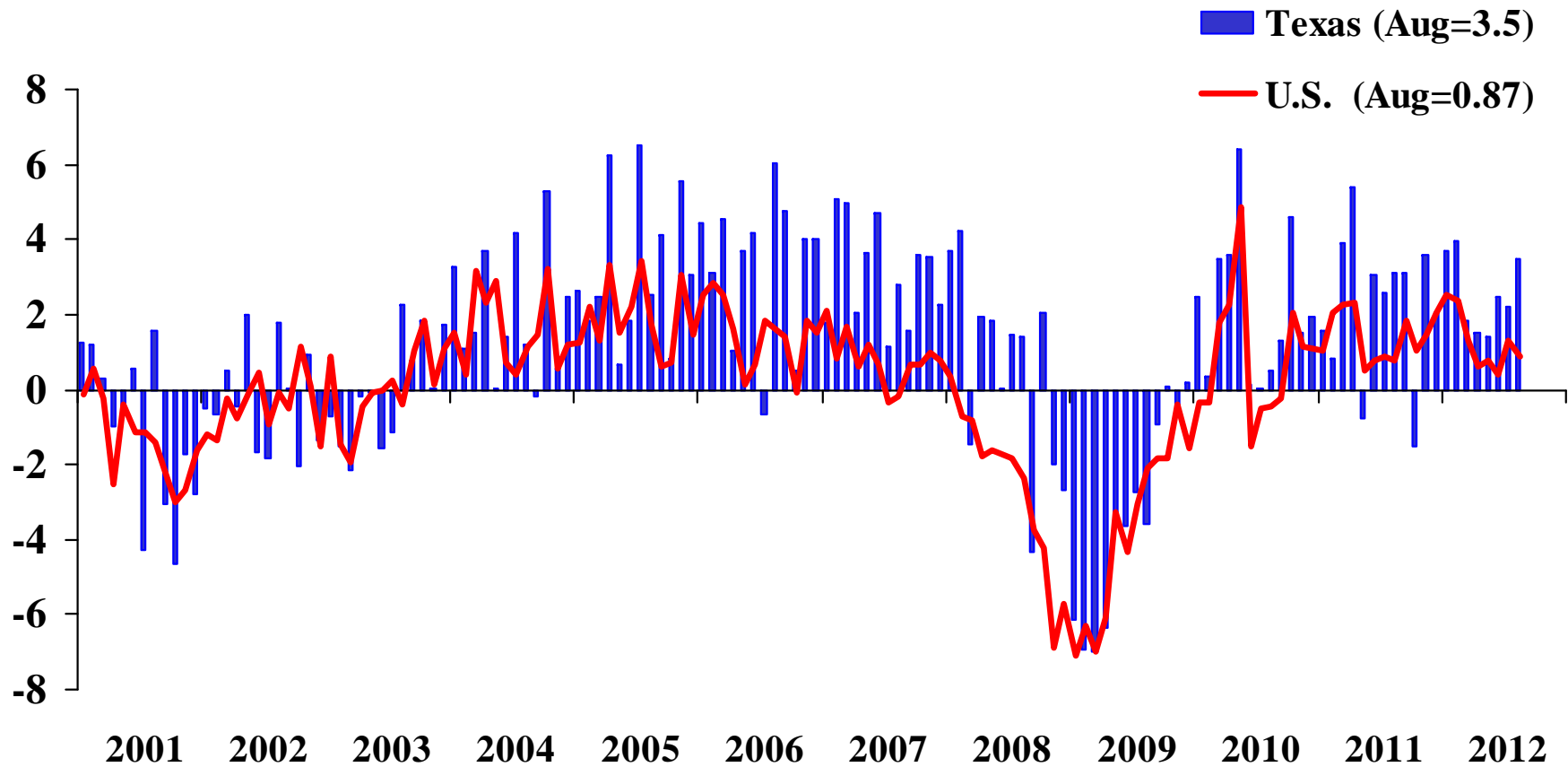
Source: BLS/TWC, seasonal and other adjustments by FRB Dallas

<http://www.dallasfed.org>



Texas Total Nonfarm Employment Monthly Growth

1-month % change,
SAAR



Source: BLS/TWC, seasonal and other adjustments by FRB Dallas

<http://www.dallasfed.org>



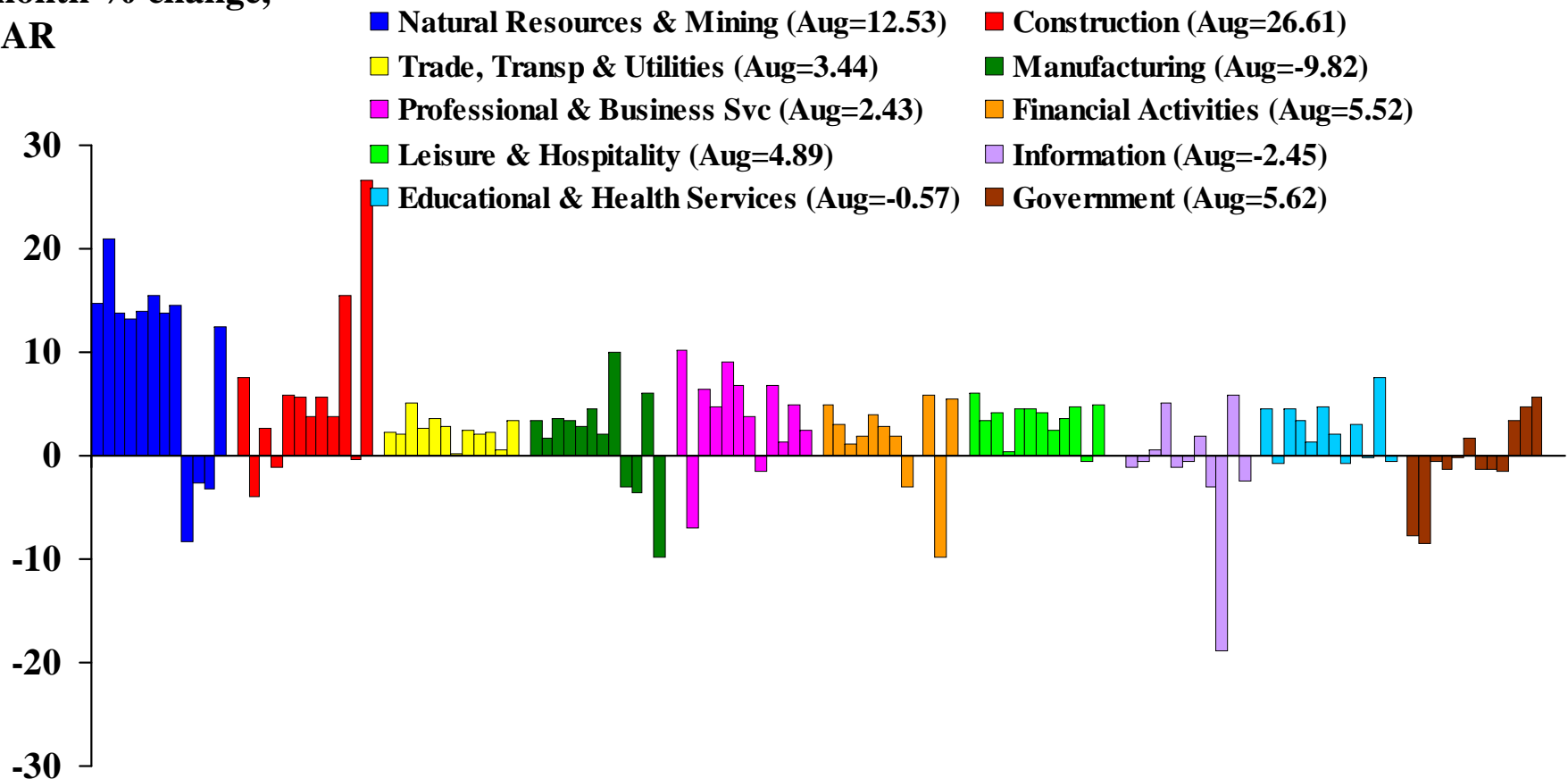
Texas Industry Employment

NAICS Super Sectors

Monthly Growth. SA by FRB Dallas

September 2011 - August 2012

1-month % change,
SAAR



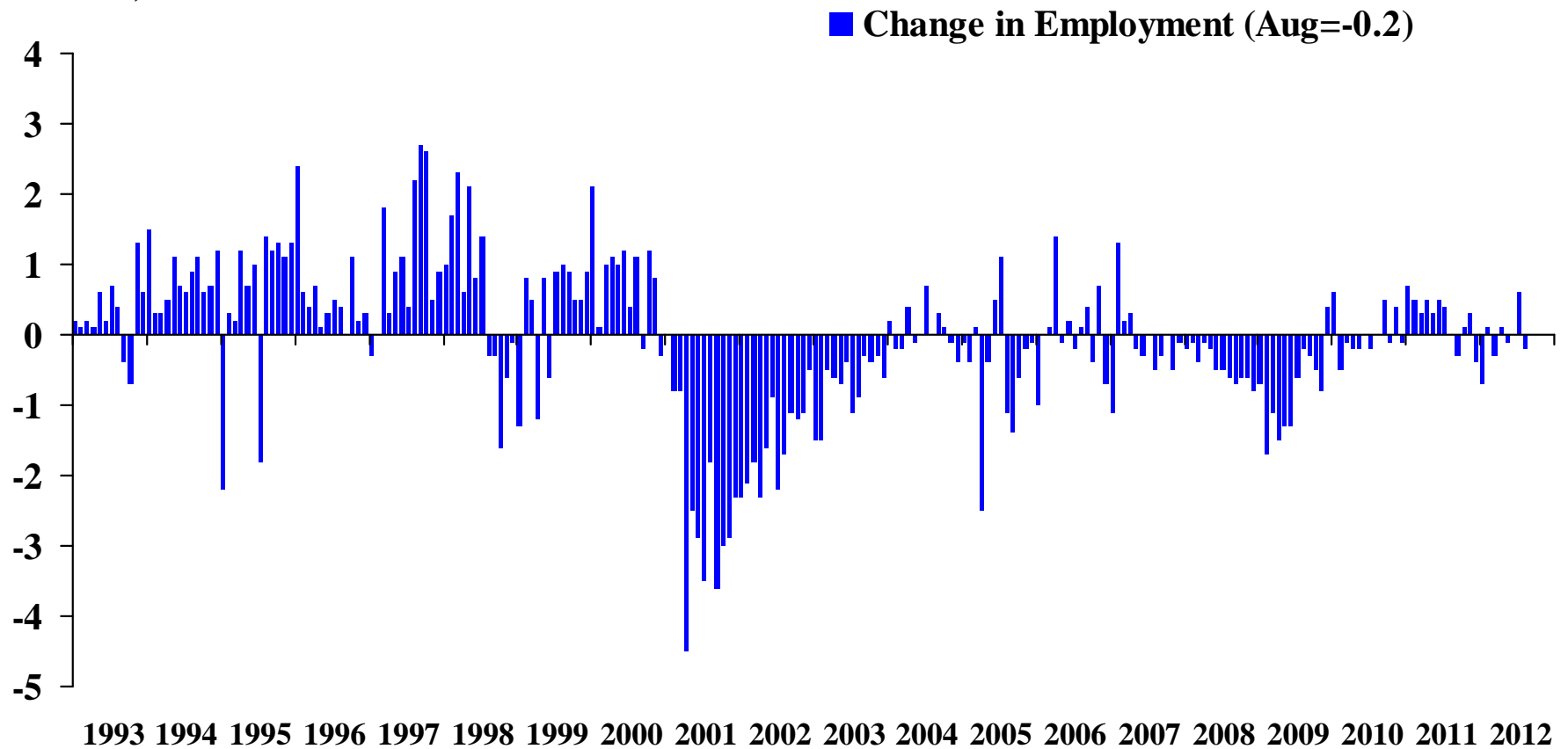
Source: BLS/TWC, seasonal and other adjustments by FRB Dallas

<http://www.dallasfed.org>



Texas High Tech Manufacturing Employment (Change in Employment)

Thousands, SA



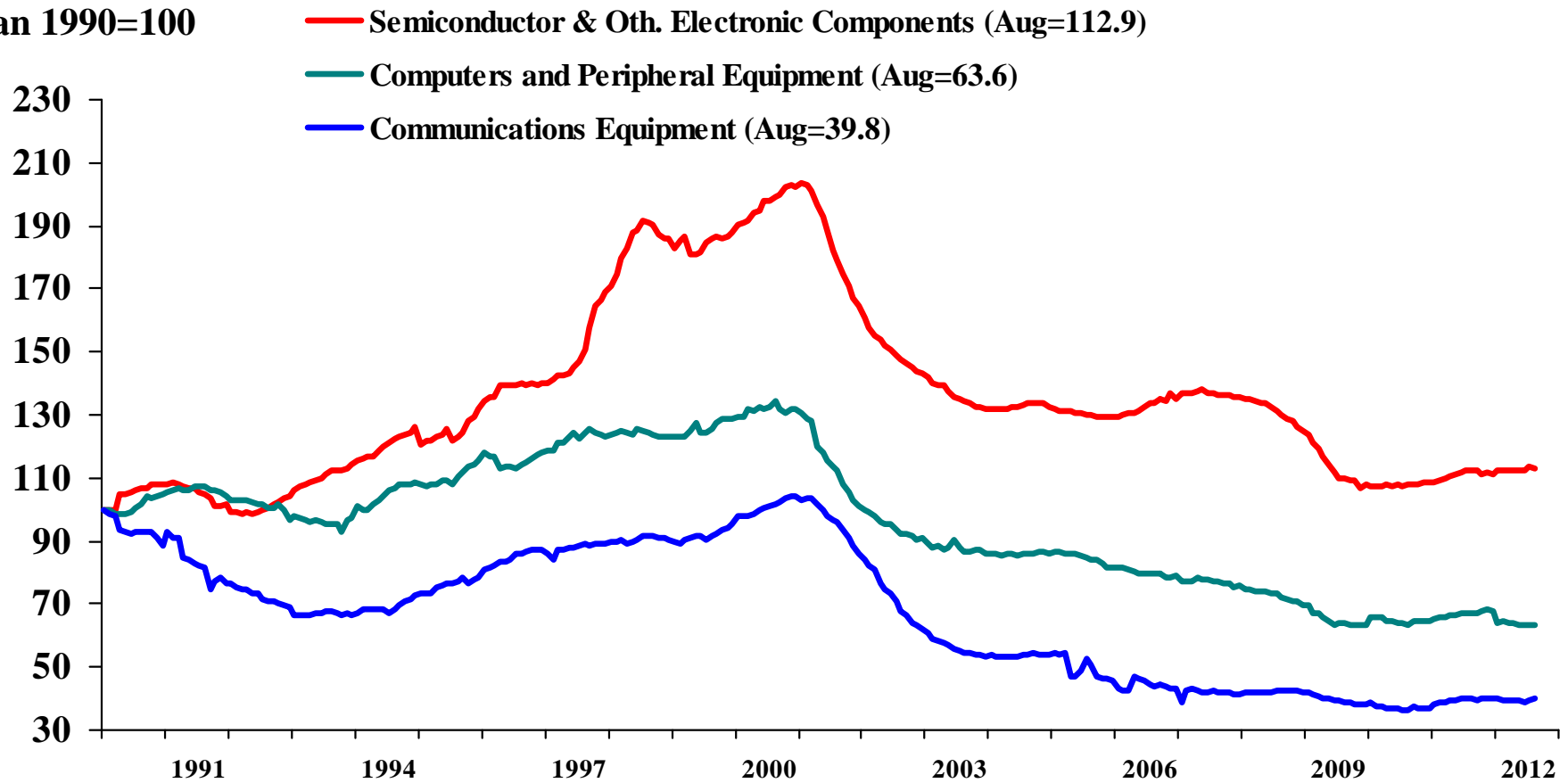
Source: BLS/TWC, seasonal and other adjustments by FRB Dallas

<http://www.dallasfed.org>



Texas High Tech Manufacturing Employment

Index,
Jan 1990=100



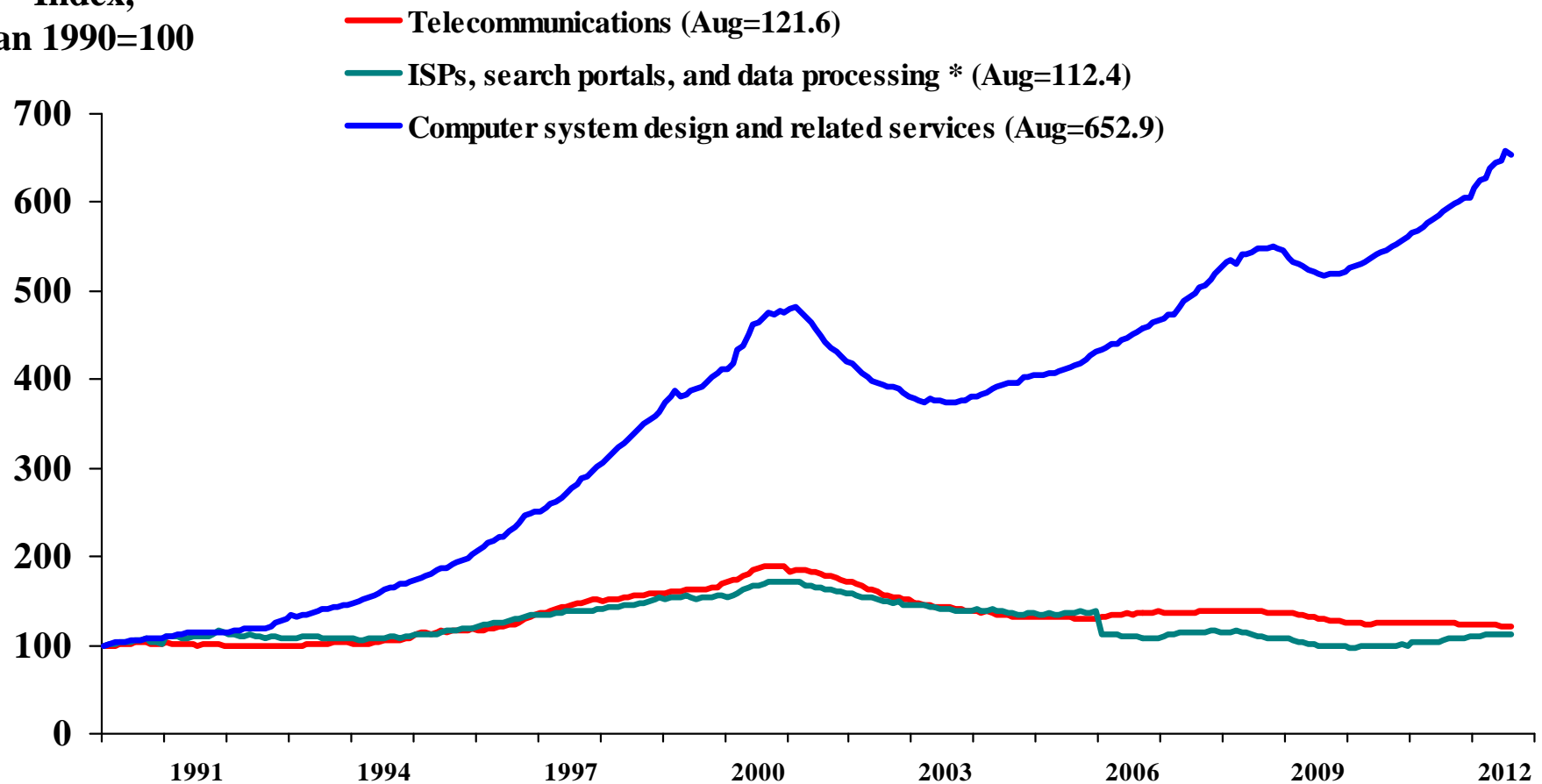
Source: BLS/TWC, seasonal and other adjustments by FRB Dallas

<http://www.dallasfed.org>



Texas High Tech Services Employment

Index,
Jan 1990=100



* The January 2006 drop in ISPs, search portals, and data processing is due to changes in NAICS codes.

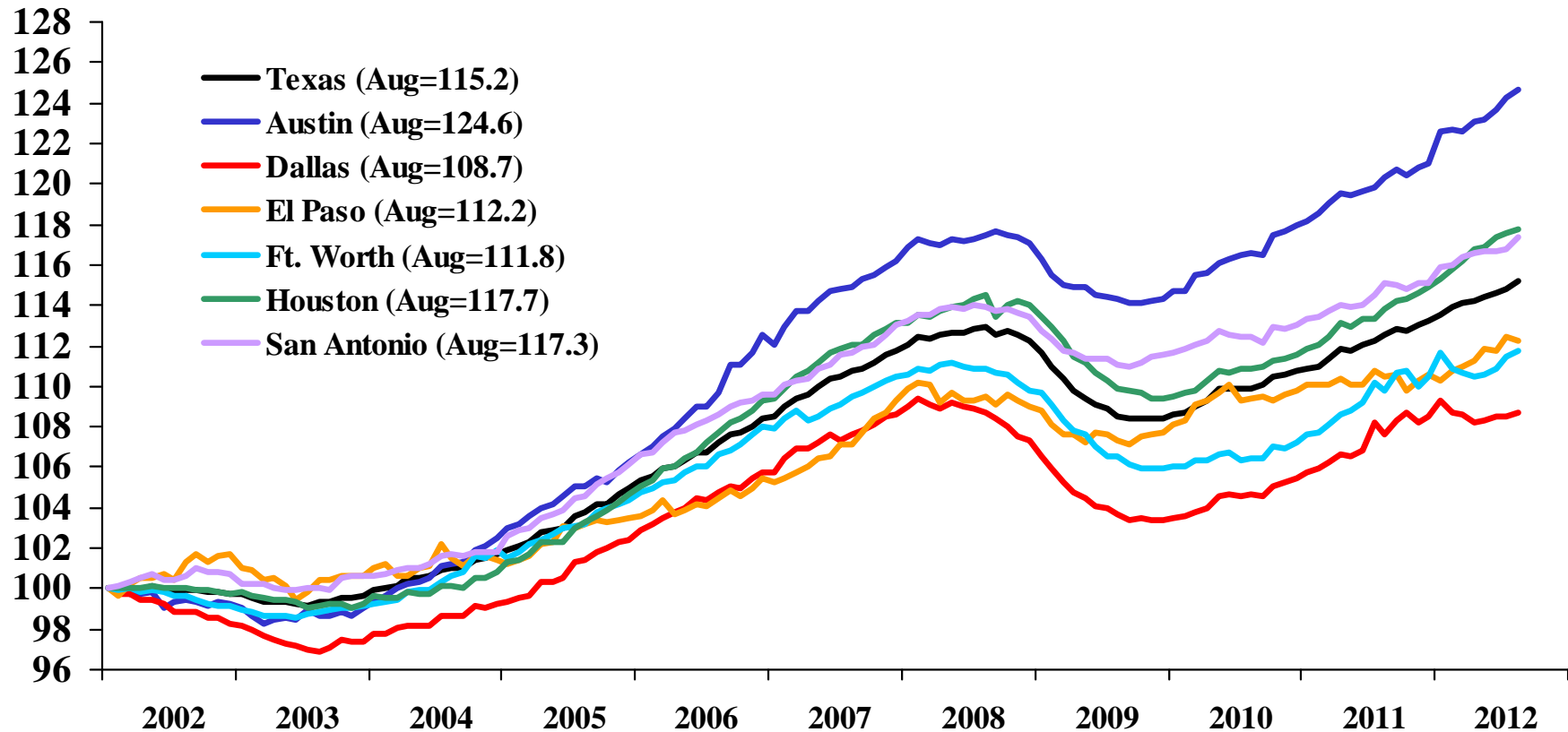
Source: BLS/TWC, seasonal and other adjustments by FRB Dallas

<http://www.dallasfed.org>



Texas Major Metro Area Employment

Index,
Jan2002=100



Source: BLS/TWC, seasonal and other adjustments by FRB Dallas

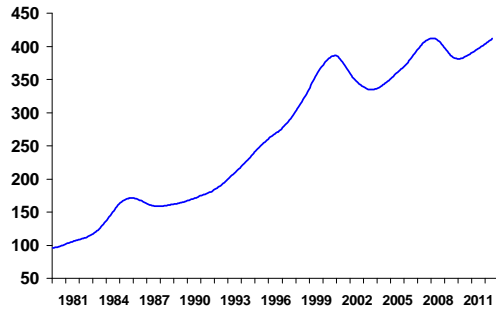
<http://www.dallasfed.org>



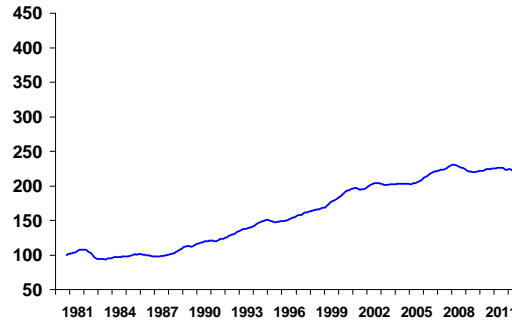
Texas Metro Business-Cycle Indexes

July 2012

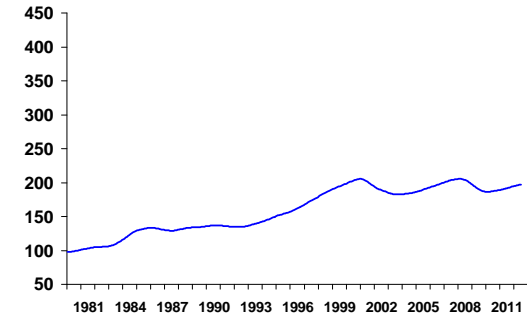
Austin-Round Rock-San Marcos



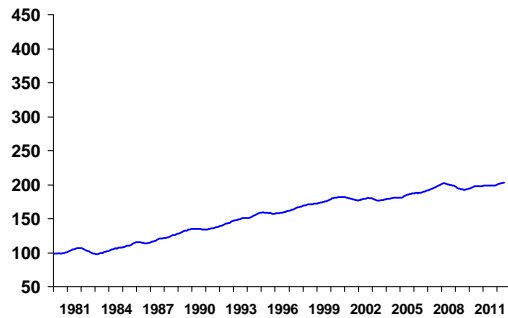
Brownsville-Harlingen



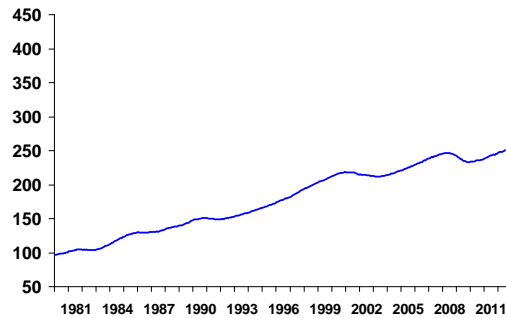
Dallas-Plano-Irving MD



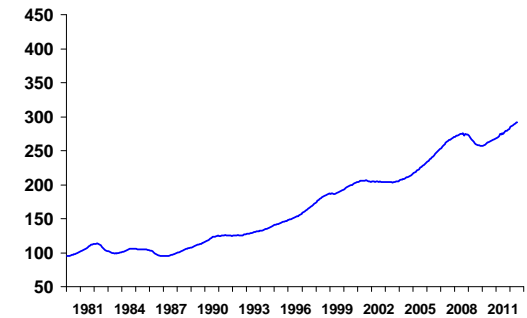
El Paso



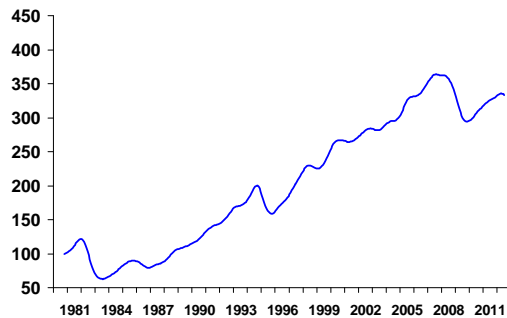
Forth Worth-Arlington MD



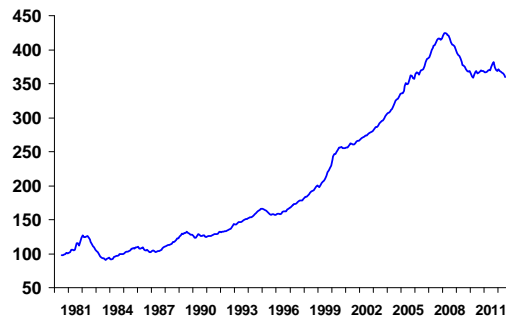
Houston-Sugar Land-Baytown



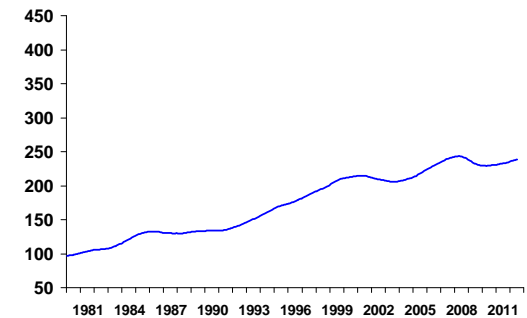
Laredo



McAllen-Edinburg-Mission



San Antonio-New Braunfels



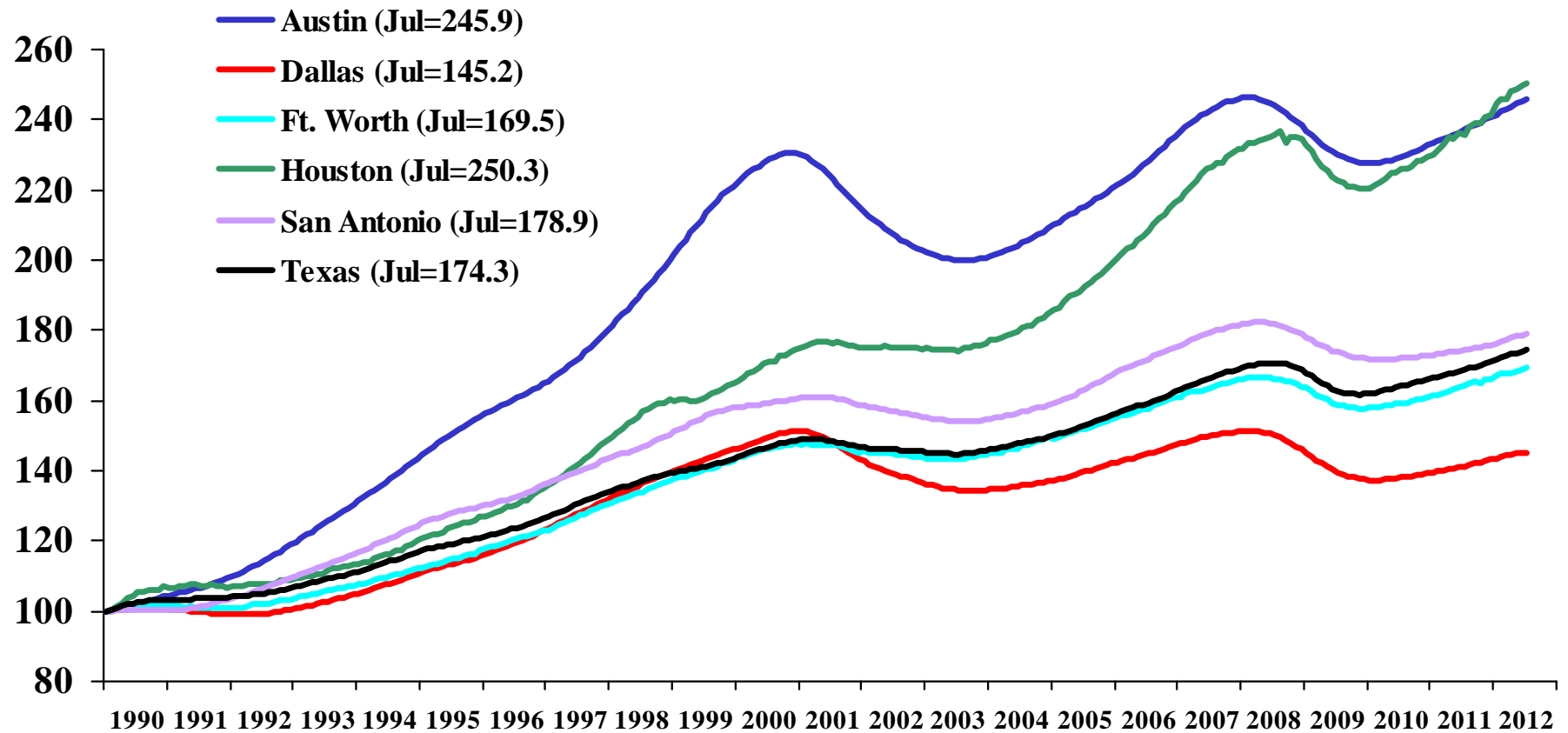
Source: FRB Dallas

<http://www.dallasfed.org>



Texas Major Metro Area Business-Cycle Indexes

Index,
Jan 1990=100



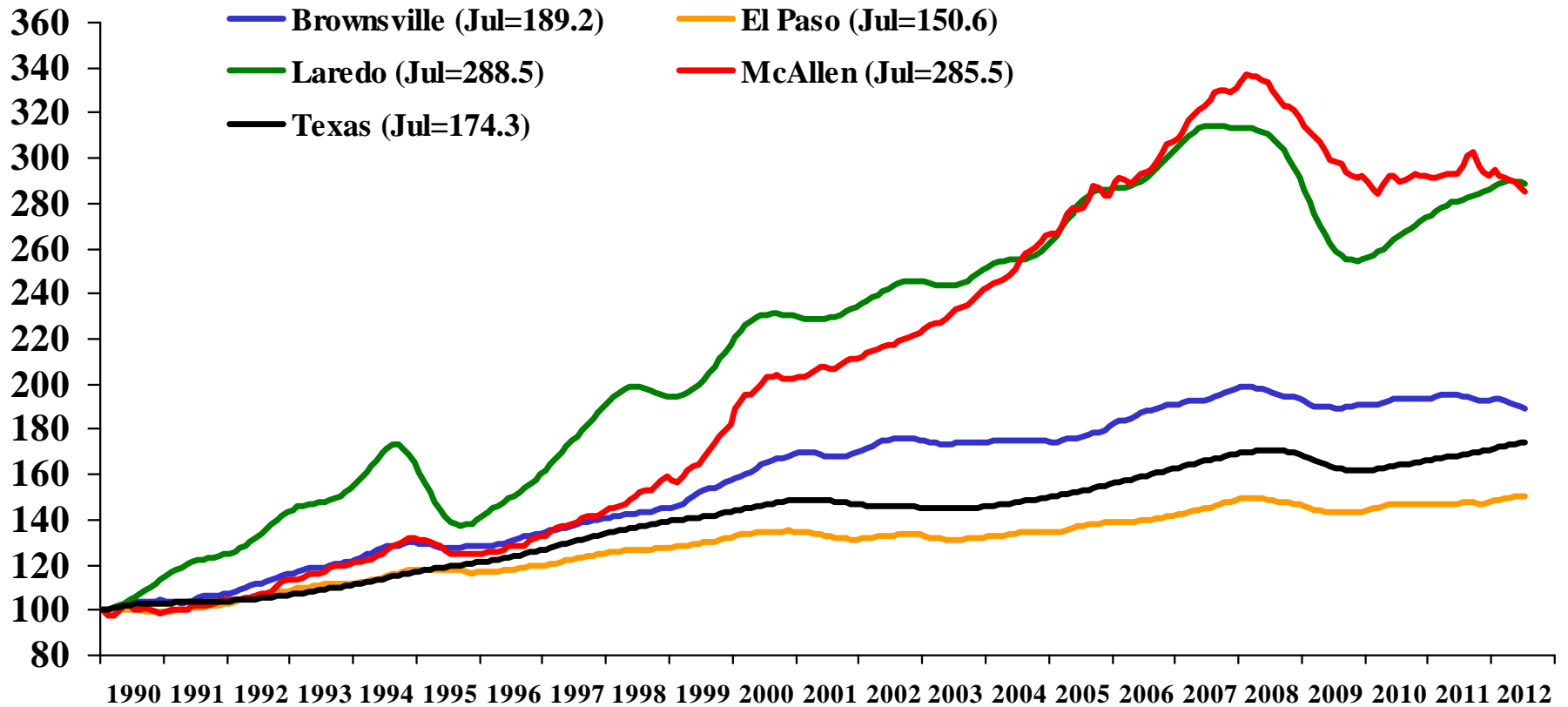
Source: FRB Dallas

<http://www.dallasfed.org>



Texas Border Metro Area Business-Cycle Indexes

Index,
Jan1990=100



Source: FRB Dallas

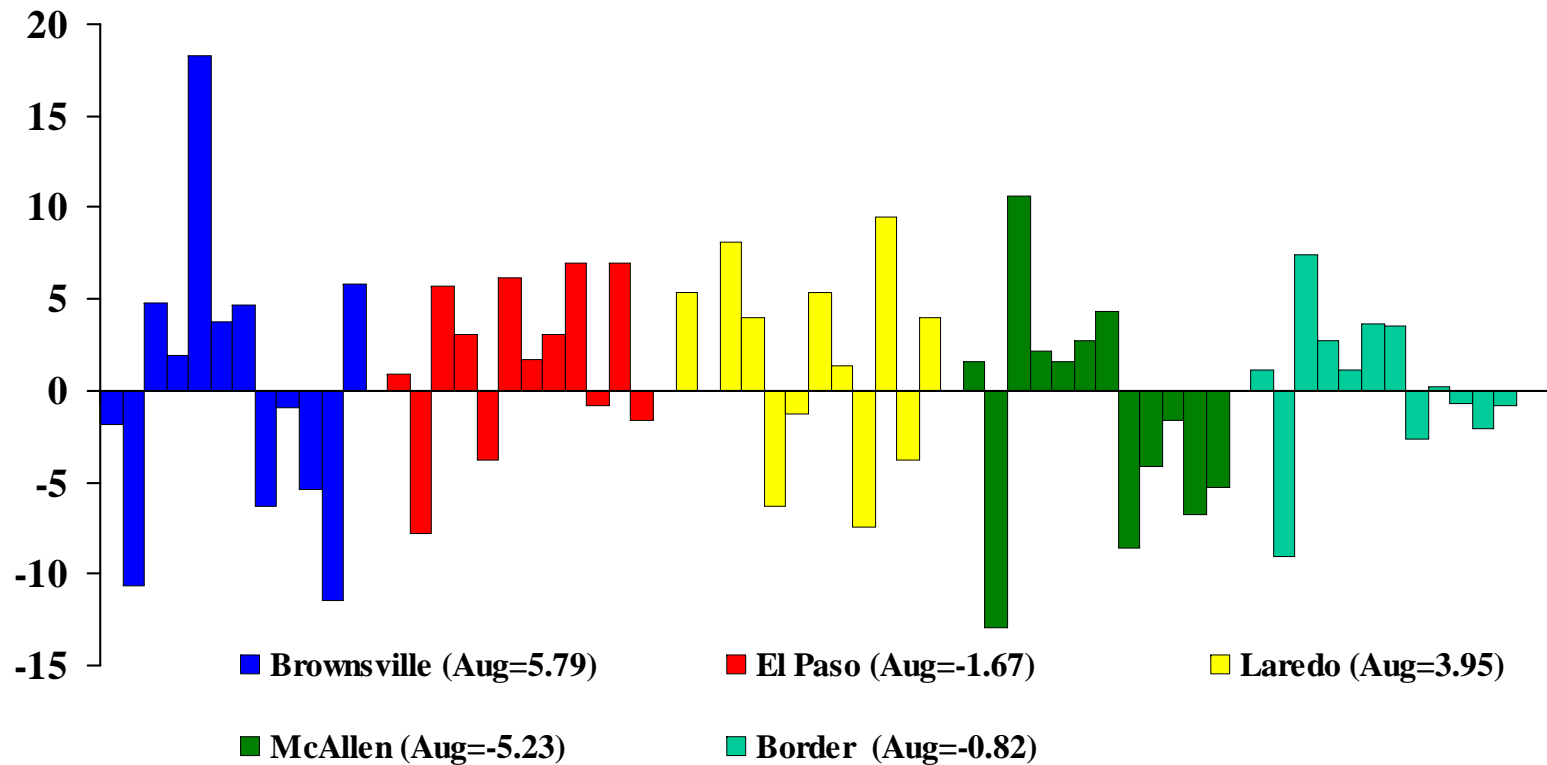
<http://www.dallasfed.org>



Texas Border Employment SA by FRB Dallas. Monthly Changes.

September 2011 - August 2012

1-month % change,
SAAR



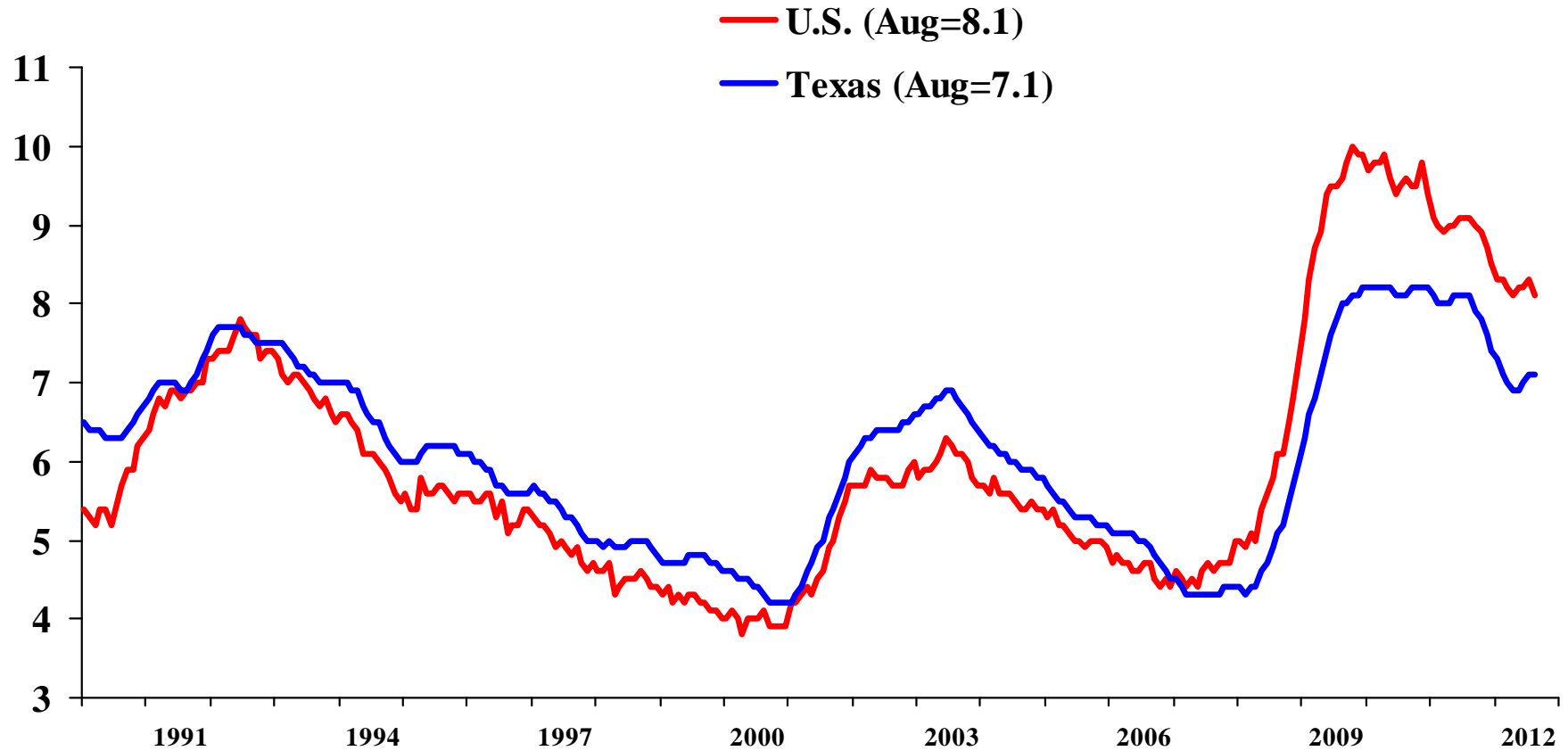
Source: BLS/TWC, seasonal and other adjustments by FRB Dallas

<http://www.dallasfed.org>



Texas and U.S. Unemployment Rate

Percent, SA



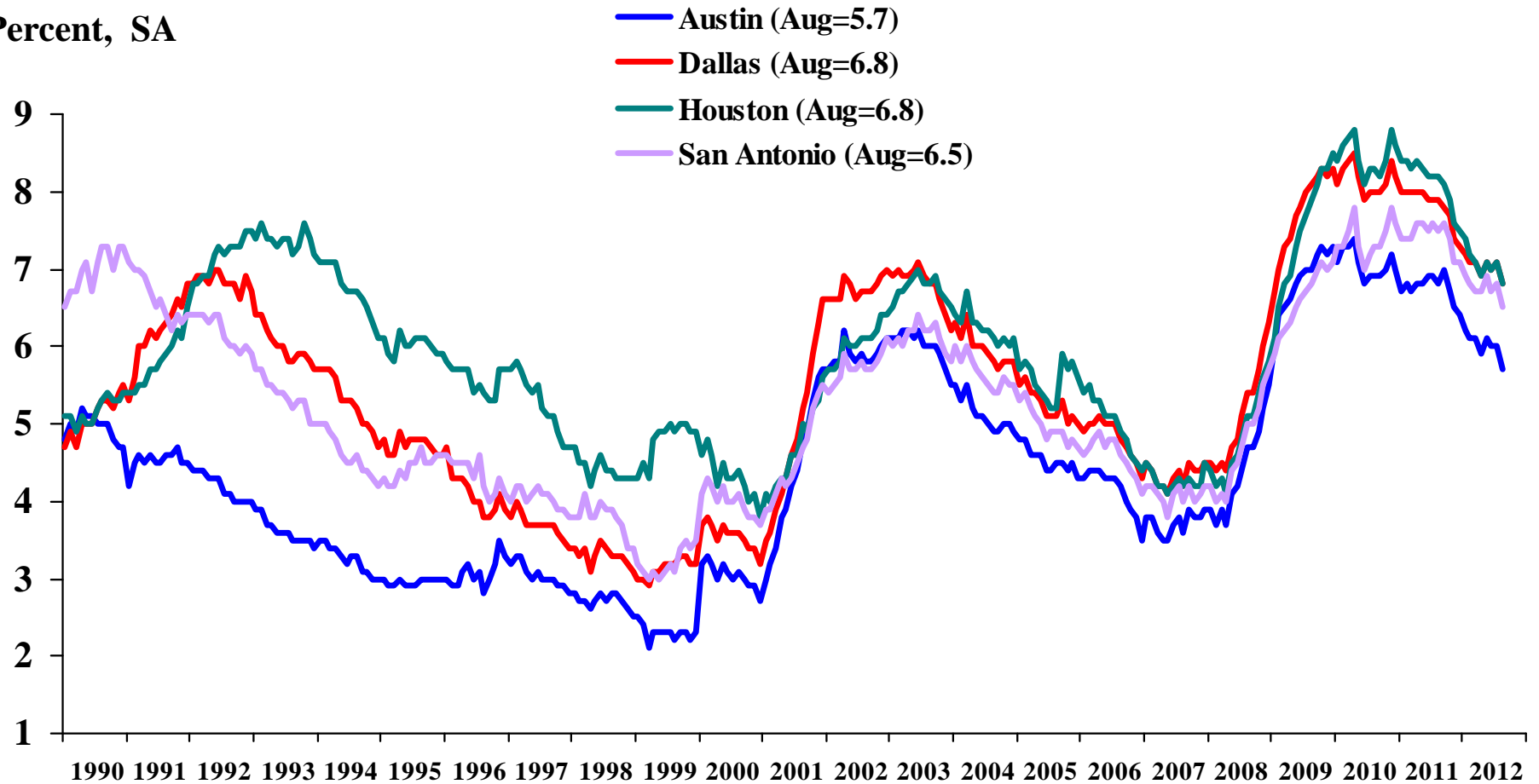
Source: BLS

<http://www.dallasfed.org>



Texas Major Metro Area Unemployment Rates

Percent, SA



Source: BLS, seasonal adjustment by FRB Dallas

<http://www.dallasfed.org>



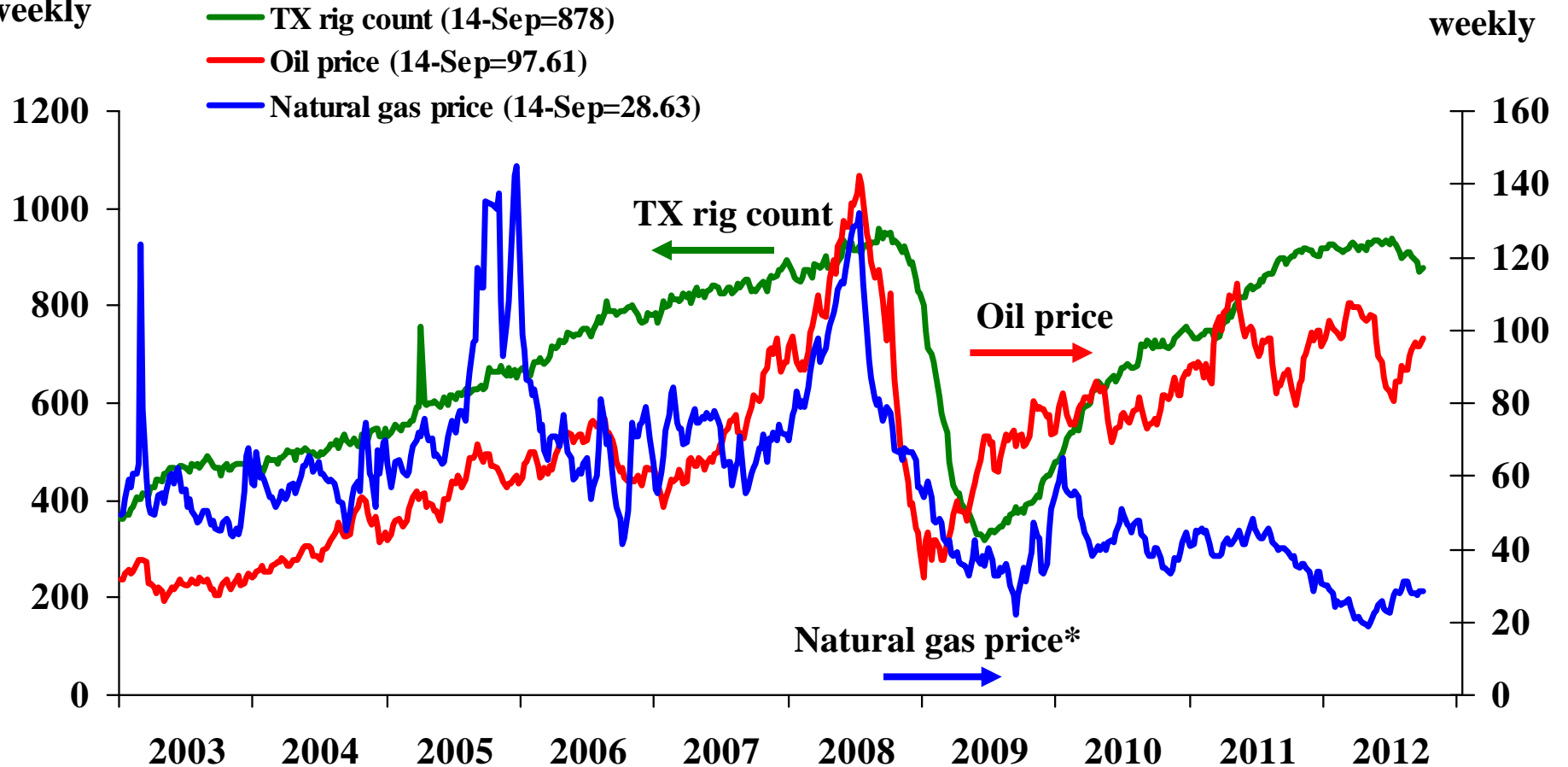
Energy Prices and Texas Rig Count

Rig count,

weekly

Nominal price, \$

weekly



* Natural gas price is multiplied by 10

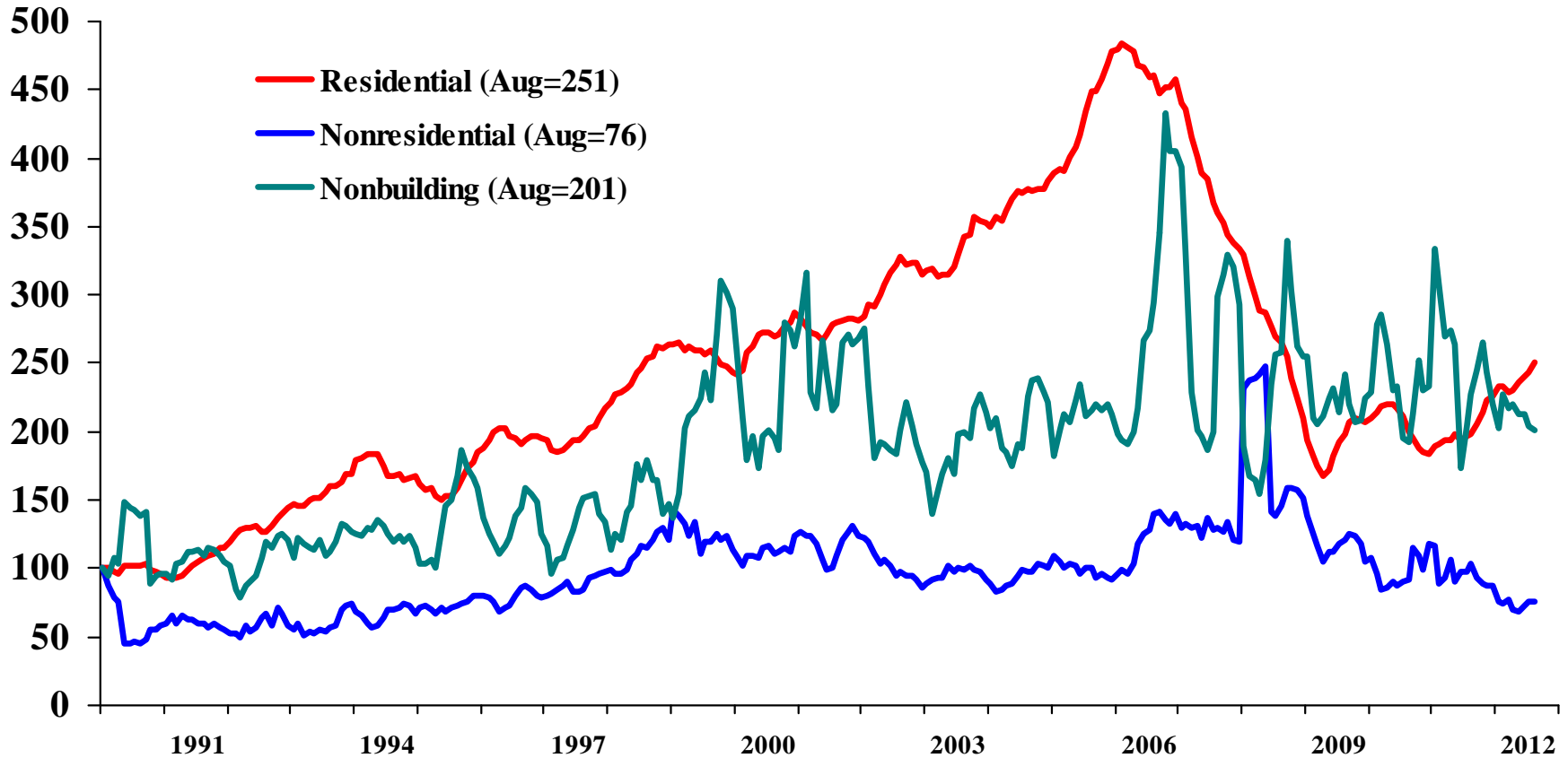
Source: Wall Street Journal, Henry Hub, Baker Hughes

<http://www.dallasfed.org>



Real Texas Construction Contract Values

Index Jan 1990=100
SA, 5MMA

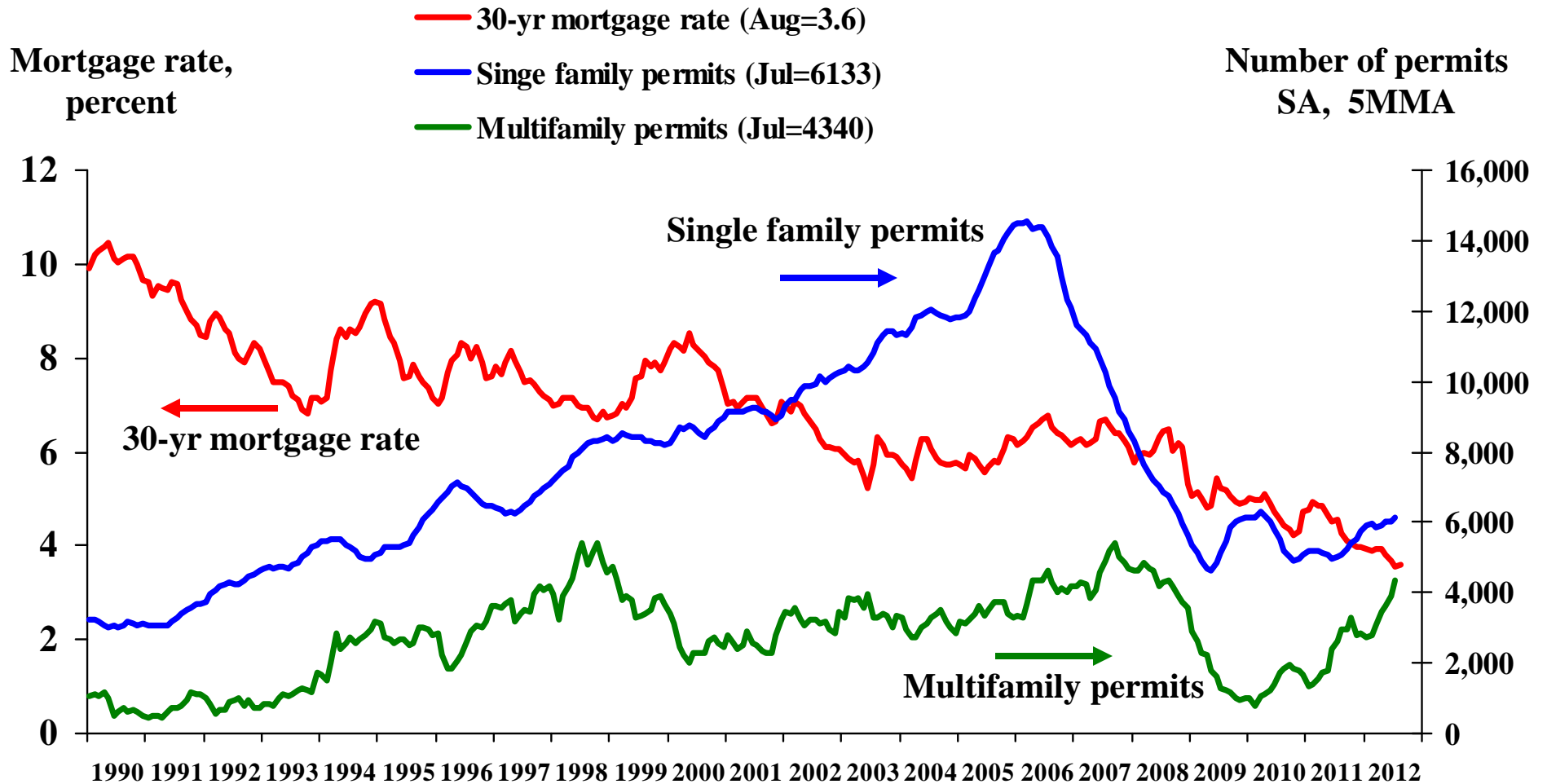


Source: McGraw-Hill Construction F.W. Dodge

<http://www.dallasfed.org>



Texas Residential Permits and Mortgage Rate



Source: Bureau of the Census

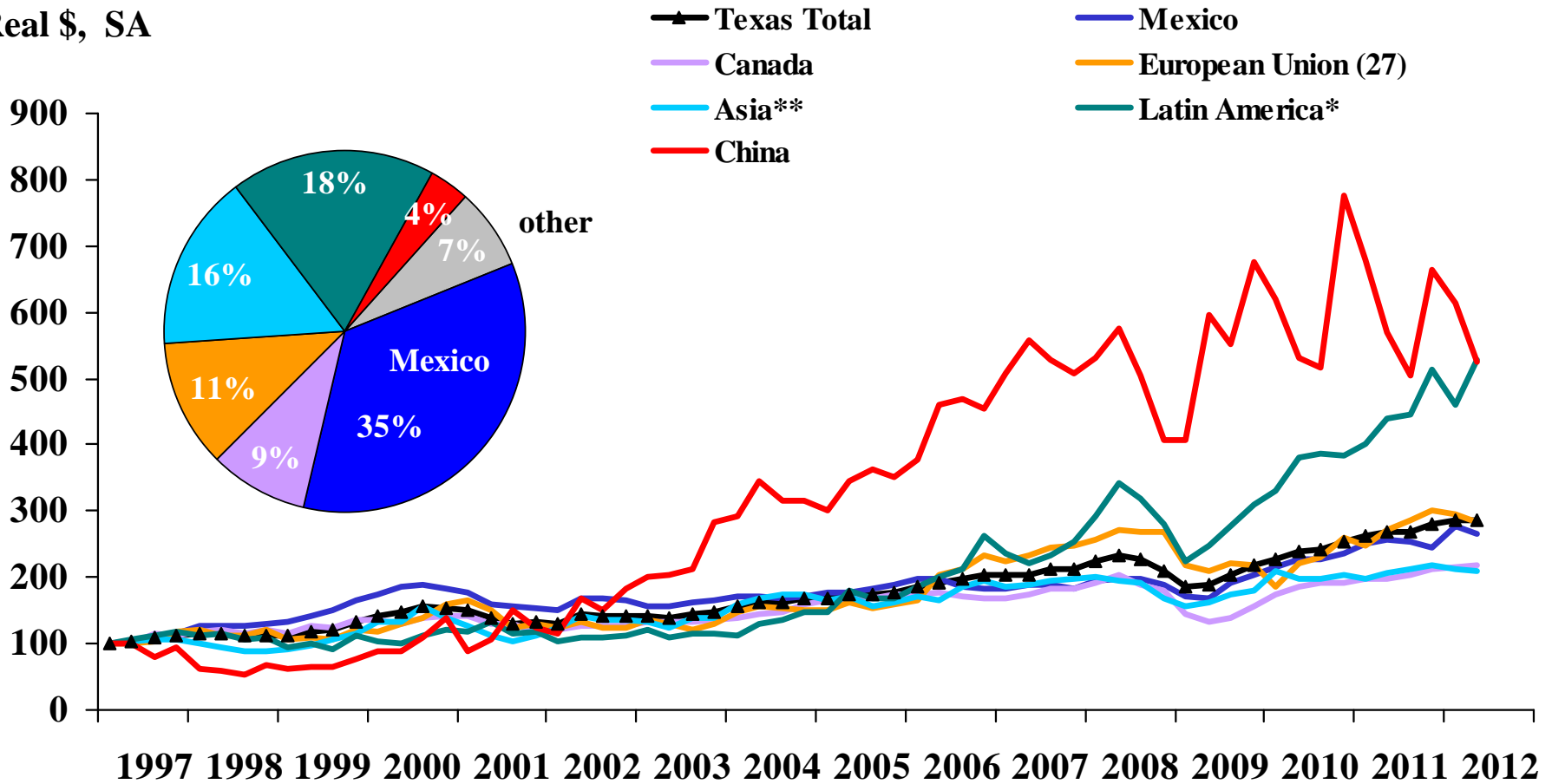
<http://www.dallasfed.org>



Texas Exports by Region

2012:Q2

Index, 97Q1=100
Real \$, SA



* Latin America excluding Mexico; ** Asia excluding China

Source: World Institute for Strategic Economic Research, FRB Dallas

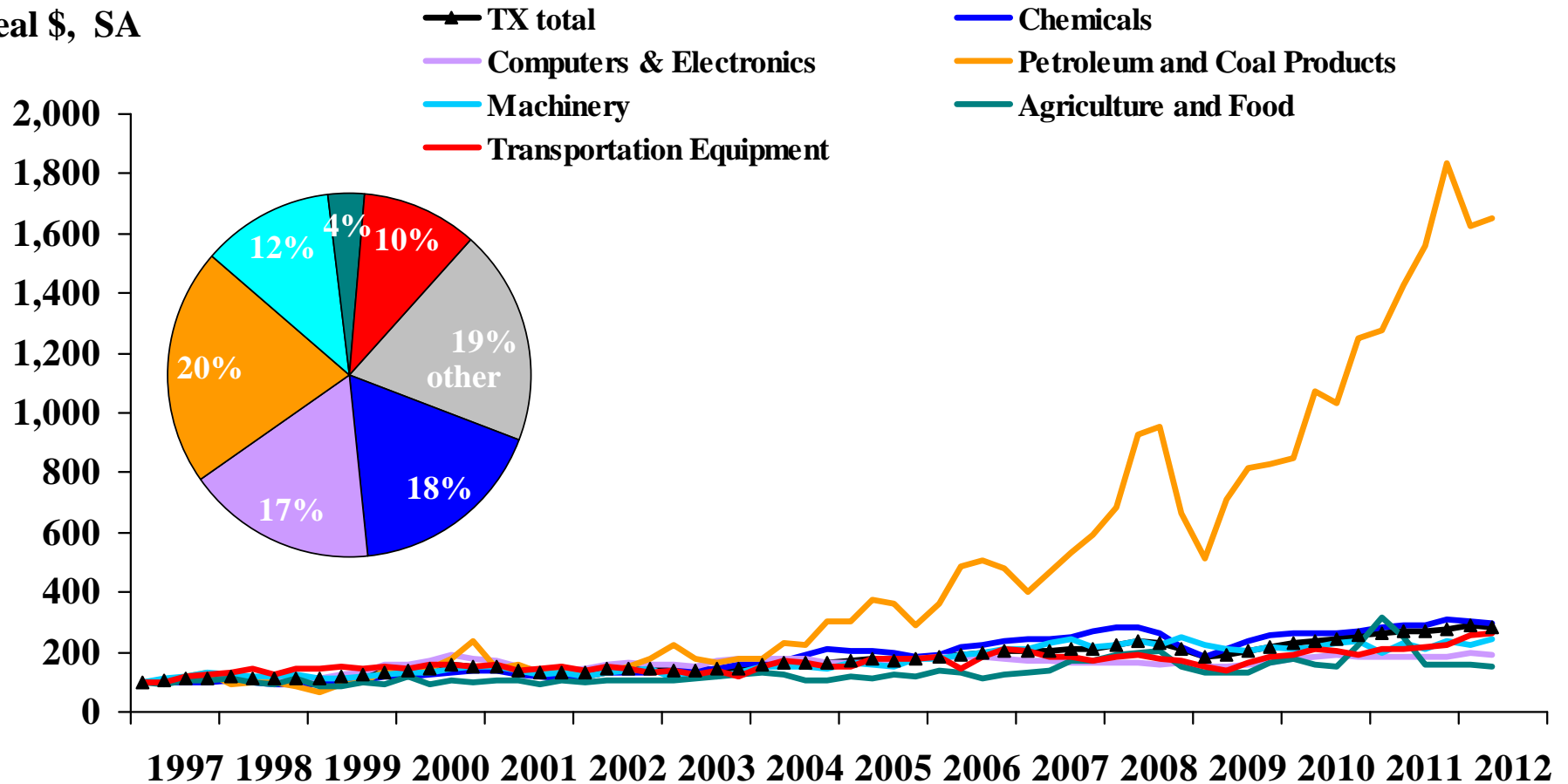
<http://www.dallasfed.org>



Texas Exports by Industry

2012:Q2

Index, 97Q1=100
Real \$, SA



Source: World Institute for Strategic Economic Research, FRB Dallas

<http://www.dallasfed.org>