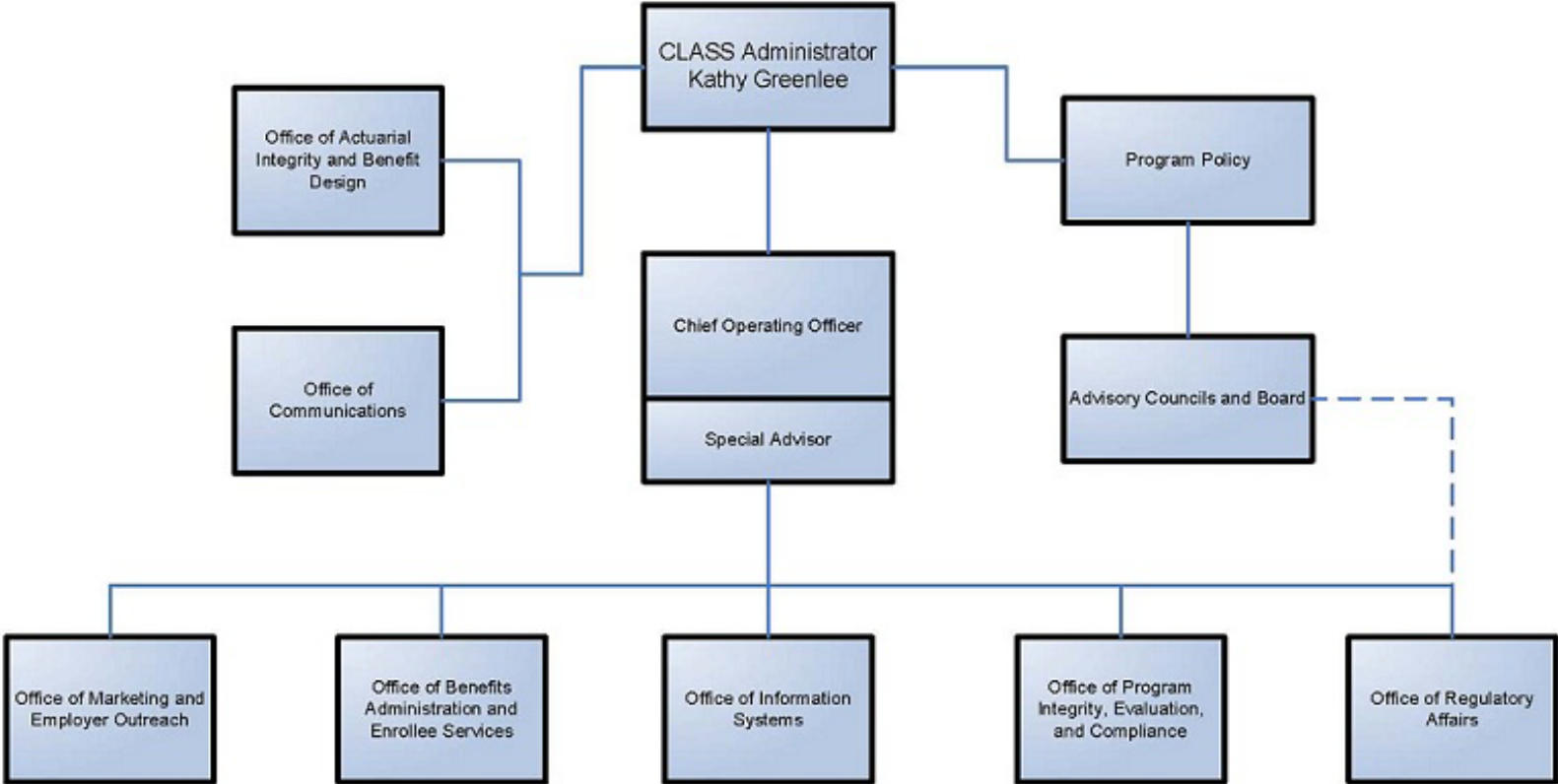


**A REPORT ON THE ACTUARIAL,
MARKETING, AND LEGAL ANALYSES
OF THE CLASS PROGRAM**

APPENDIX D:

CLASS OFFICE ORGANIZATIONAL CHART

Office of Community Living Assistance Services and Supports



A REPORT ON THE ACTUARIAL, MARKETING, AND LEGAL ANALYSES OF THE CLASS PROGRAM

For additional information, you may visit the DALTCP home page at http://aspe.hhs.gov/_/office_specific/daltcp.cfm or contact the office at HHS/ASPE/DALTCP, Room 424E, H.H. Humphrey Building, 200 Independence Avenue, SW, Washington, DC 20201. The e-mail address is: webmaster.DALTCP@hhs.gov.

Files Available for This Report

Main Report	[48 PDF pages]
	http://aspe.hhs.gov/daltcp/reports/2011/class/index.shtml http://aspe.hhs.gov/daltcp/reports/2011/class/index.pdf
APPENDIX A: Key Provisions of Title VIII of the ACA, Which Establishes the CLASS Program	[6 PDF pages]
	http://aspe.hhs.gov/daltcp/reports/2011/class/appA.htm http://aspe.hhs.gov/daltcp/reports/2011/class/appA.pdf
APPENDIX B: HHS Letters to Congress About Intent to Create Independent CLASS Office	[11 PDF pages]
	http://aspe.hhs.gov/daltcp/reports/2011/class/appB.htm http://aspe.hhs.gov/daltcp/reports/2011/class/appB.pdf
APPENDIX C: <u>Federal Register</u> Announcement Establishing CLASS Office	[2 PDF pages]
	http://aspe.hhs.gov/daltcp/reports/2011/class/appC.htm http://aspe.hhs.gov/daltcp/reports/2011/class/appC.pdf
APPENDIX D: CLASS Office Organizational Chart	[2 PDF pages]
	http://aspe.hhs.gov/daltcp/reports/2011/class/appD.htm http://aspe.hhs.gov/daltcp/reports/2011/class/appD.pdf
APPENDIX E: CLASS Process Flow Chart	[2 PDF pages]
	http://aspe.hhs.gov/daltcp/reports/2011/class/appE.htm http://aspe.hhs.gov/daltcp/reports/2011/class/appE.pdf
APPENDIX F: <u>Federal Register</u> Announcement for CLASS Independence Advisory Council	[3 PDF pages]
	http://aspe.hhs.gov/daltcp/reports/2011/class/appF.htm http://aspe.hhs.gov/daltcp/reports/2011/class/appF.pdf
APPENDIX G: Personal Care Attendants Workforce Advisory Panel and List of Members	[6 PDF pages]
Full Appendix	http://aspe.hhs.gov/daltcp/reports/2011/class/appG.htm http://aspe.hhs.gov/daltcp/reports/2011/class/appG.pdf
Ga: <u>Federal Register</u> Announcement for Personal Care Attendants Workforce Advisory Panel	http://aspe.hhs.gov/daltcp/reports/2011/class/appGa.pdf
Gb: Advisory Panel List of Members	http://aspe.hhs.gov/daltcp/reports/2011/class/appGb.pdf

APPENDIX H: Policy Papers Discussed by the LTC Work Group	[36 PDF pages]
	http://aspe.hhs.gov/daltcp/reports/2011/class/appH.htm
	http://aspe.hhs.gov/daltcp/reports/2011/class/appH.pdf
APPENDIX I: CLASS Administration Systems Analysis and RFI	[10 PDF pages]
	http://aspe.hhs.gov/daltcp/reports/2011/class/appI.htm
	http://aspe.hhs.gov/daltcp/reports/2011/class/appI.pdf
APPENDIX J: Additional Analyses for Early Policy Analysis	[150 PDF pages]
Full Appendix	http://aspe.hhs.gov/daltcp/reports/2011/class/appJ.htm
	http://aspe.hhs.gov/daltcp/reports/2011/class/appJ.pdf
Ja: A Profile of Declined Long-Term Care Insurance Applicants	http://aspe.hhs.gov/daltcp/reports/2011/class/appJa.pdf
Jb: CLASS Program Benefit Triggers and Cognitive Impairment	http://aspe.hhs.gov/daltcp/reports/2011/class/appJb.pdf
Jc: Strategic Analysis of HHS Entry into the Long-Term Care Insurance Market	http://aspe.hhs.gov/daltcp/reports/2011/class/appJc.pdf
Jd: Managing a Cash Benefit Design in Long-Term Care Insurance	http://aspe.hhs.gov/daltcp/reports/2011/class/appJd.pdf
APPENDIX K: Early Meetings with Stakeholders	[4 PDF pages]
	http://aspe.hhs.gov/daltcp/reports/2011/class/appK.htm
	http://aspe.hhs.gov/daltcp/reports/2011/class/appK.pdf
APPENDIX L: In-Depth Description of ARC Model	[62 PDF pages]
	http://aspe.hhs.gov/daltcp/reports/2011/class/appL.htm
	http://aspe.hhs.gov/daltcp/reports/2011/class/appL.pdf
APPENDIX M: In-Depth Description of Avalere Health Model	[23 PDF pages]
	http://aspe.hhs.gov/daltcp/reports/2011/class/appM.htm
	http://aspe.hhs.gov/daltcp/reports/2011/class/appM.pdf
APPENDIX N: September 22, 2010 Technical Experts Meeting	[37 PDF pages]
Full Appendix	http://aspe.hhs.gov/daltcp/reports/2011/class/appN.htm
	http://aspe.hhs.gov/daltcp/reports/2011/class/appN.pdf
Na: Agenda, List of Participants, and Speaker Bios	http://aspe.hhs.gov/daltcp/reports/2011/class/appNa.pdf
Nb: Presentation Entitled "Actuarial Research Corporation's Long Term Care Insurance Model"	http://aspe.hhs.gov/daltcp/reports/2011/class/appNb.pdf
Nc: Presentation Entitled "The Long-Term Care Policy Simulator Model"	http://aspe.hhs.gov/daltcp/reports/2011/class/appNc.pdf
Nd: Presentation Entitled "Comments on 'The Long-Term Care Policy Simulator Model'"	http://aspe.hhs.gov/daltcp/reports/2011/class/appNd.pdf
APPENDIX O: Actuarial Report on the Development of CLASS Benefit Plans	[47 PDF pages]
	http://aspe.hhs.gov/daltcp/reports/2011/class/appO.htm
	http://aspe.hhs.gov/daltcp/reports/2011/class/appO.pdf

APPENDIX P: June 22, 2011 Technical Experts Meeting
Full Appendix

[46 PDF pages]

<http://aspe.hhs.gov/daltcp/reports/2011/class/appP.htm>

<http://aspe.hhs.gov/daltcp/reports/2011/class/appP.pdf>

Pa: Agenda and Discussion Issues and
Questions

<http://aspe.hhs.gov/daltcp/reports/2011/class/appPa.pdf>

Pb: Presentation Entitled "Core Assumptions and
Model Outputs"

<http://aspe.hhs.gov/daltcp/reports/2011/class/appPb.pdf>

Pc: Presentation Entitled "Actuarial Research
Corporation's Long Term Care Insurance
Model"

<http://aspe.hhs.gov/daltcp/reports/2011/class/appPc.pdf>

Pd: Presentation Entitled "The Avalere Long-
Term Care Policy Simulator Model"

<http://aspe.hhs.gov/daltcp/reports/2011/class/appPd.pdf>

Pe: Presentation Entitled "Alternative Approaches
to CLASS Benefit Design: The CLASS
Partnership"

<http://aspe.hhs.gov/daltcp/reports/2011/class/appPe.pdf>

APPENDIX Q: Table 2: Actuarial and Demographic Assumptions

[2 PDF pages]

<http://aspe.hhs.gov/daltcp/reports/2011/class/appQ.htm>

<http://aspe.hhs.gov/daltcp/reports/2011/class/appQ.pdf>

APPENDIX R: Figure 1: Daily Benefit Amount for Increased Benefit

[2 PDF pages]

<http://aspe.hhs.gov/daltcp/reports/2011/class/appR.htm>

<http://aspe.hhs.gov/daltcp/reports/2011/class/appR.pdf>