

People on the Move: Migration in the Heartland

2006 Kansas-Missouri Economic Forums

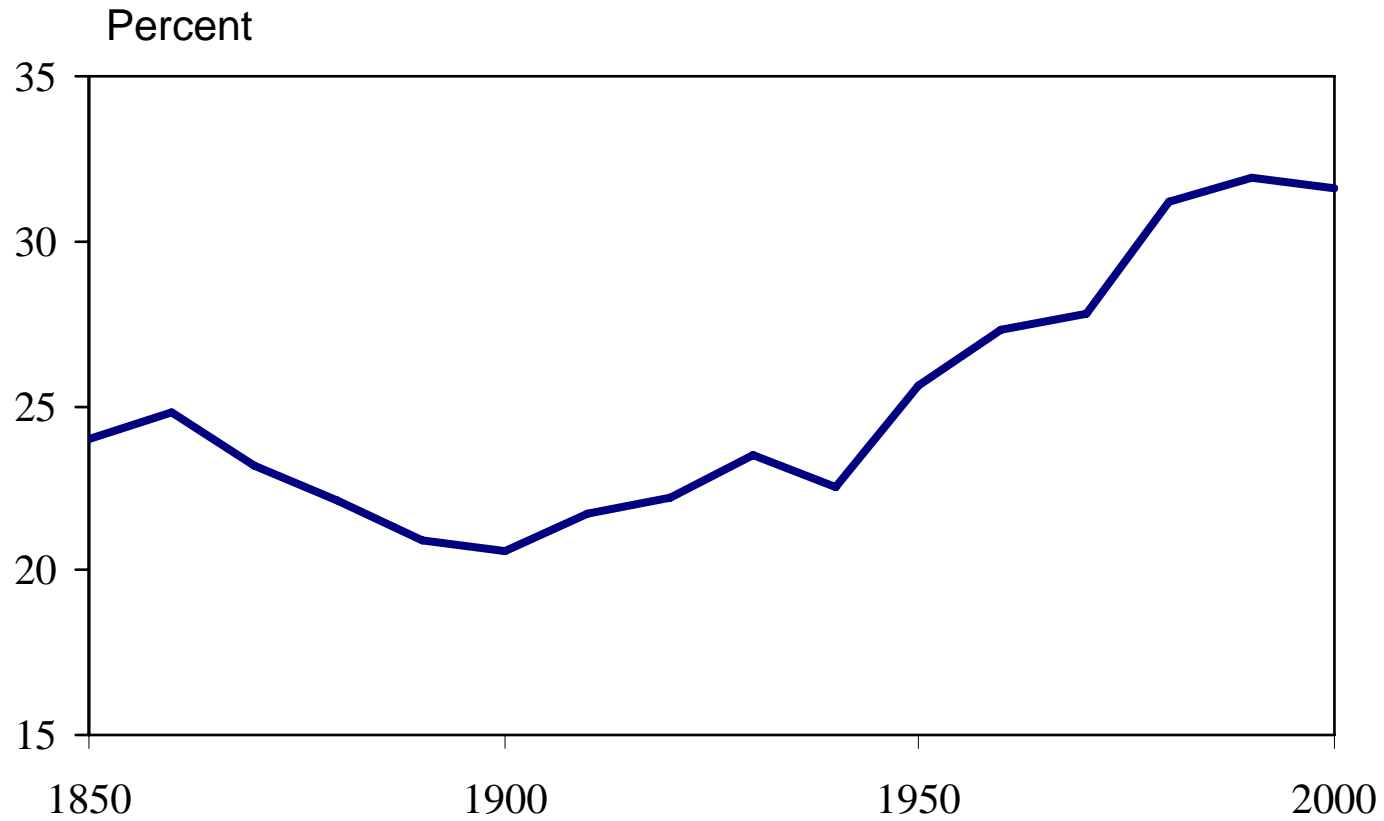
Bill Keeton

Federal Reserve Bank of Kansas City

Internal migration in the U.S.

Chart 1

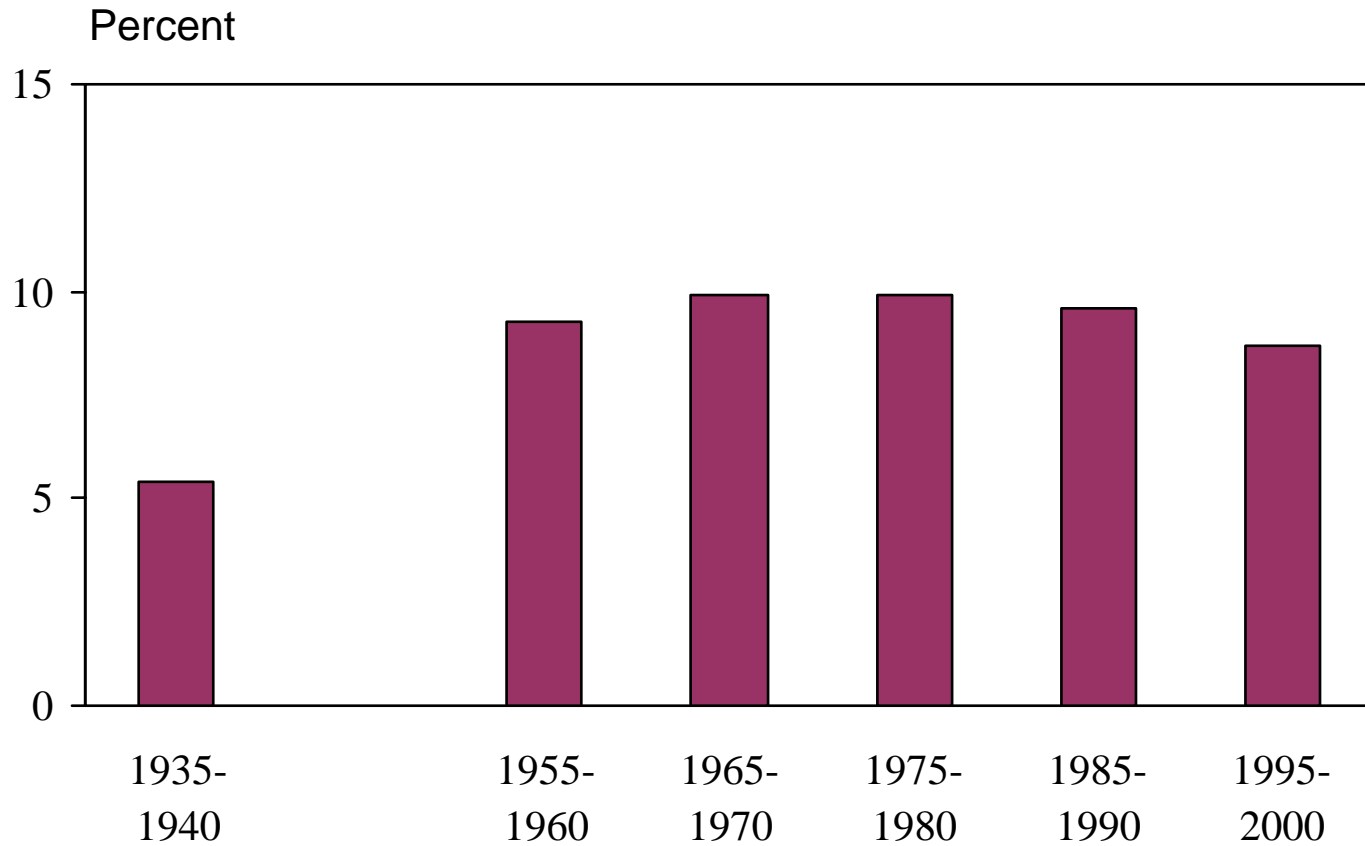
U.S. Residents Living Outside State of Birth



Source: Census Bureau

Chart 2

U.S. Residents Moving Between States

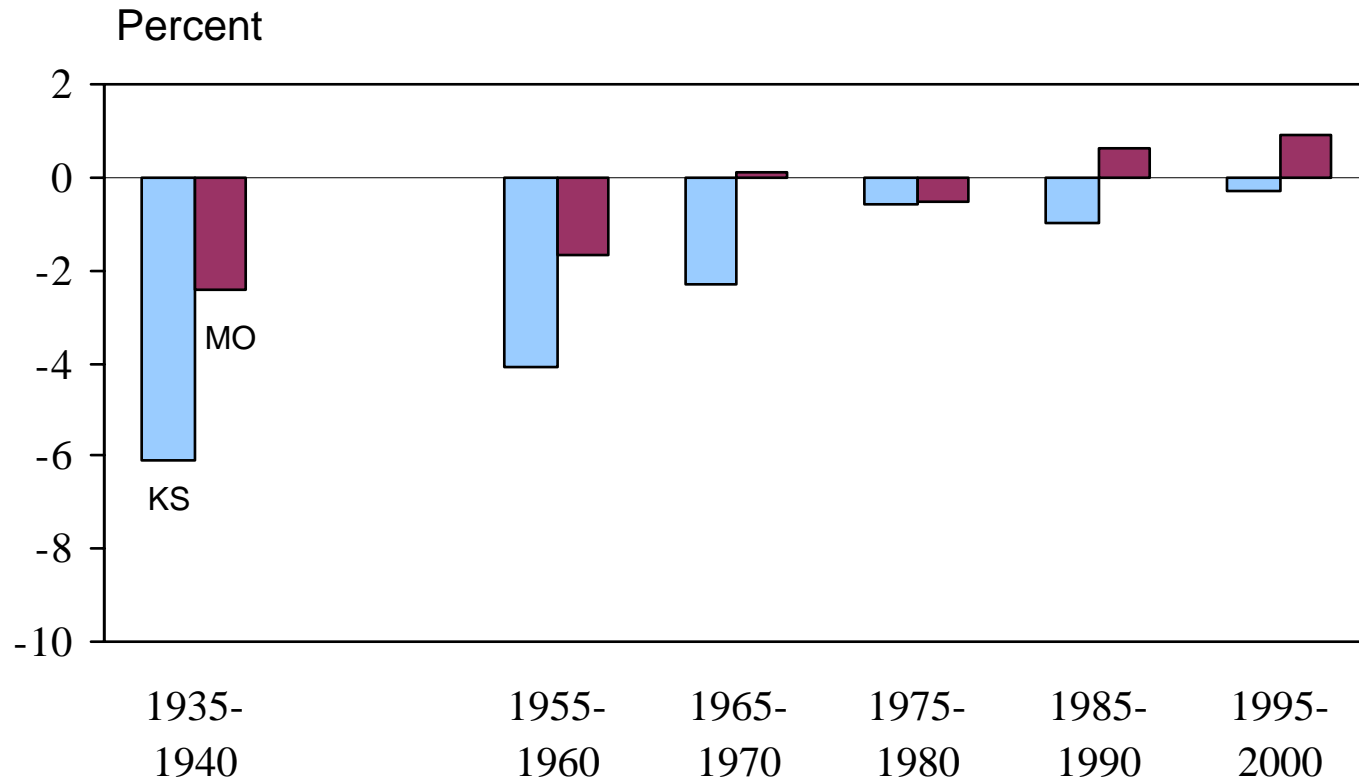


Source: Census Bureau

Migration in Kansas and Missouri

Chart 3

Net In-Migration to Kansas and Missouri over the Long Run



Source: Census Bureau

Chart 4

Net In-Migration to Kansas and Missouri from Individual States

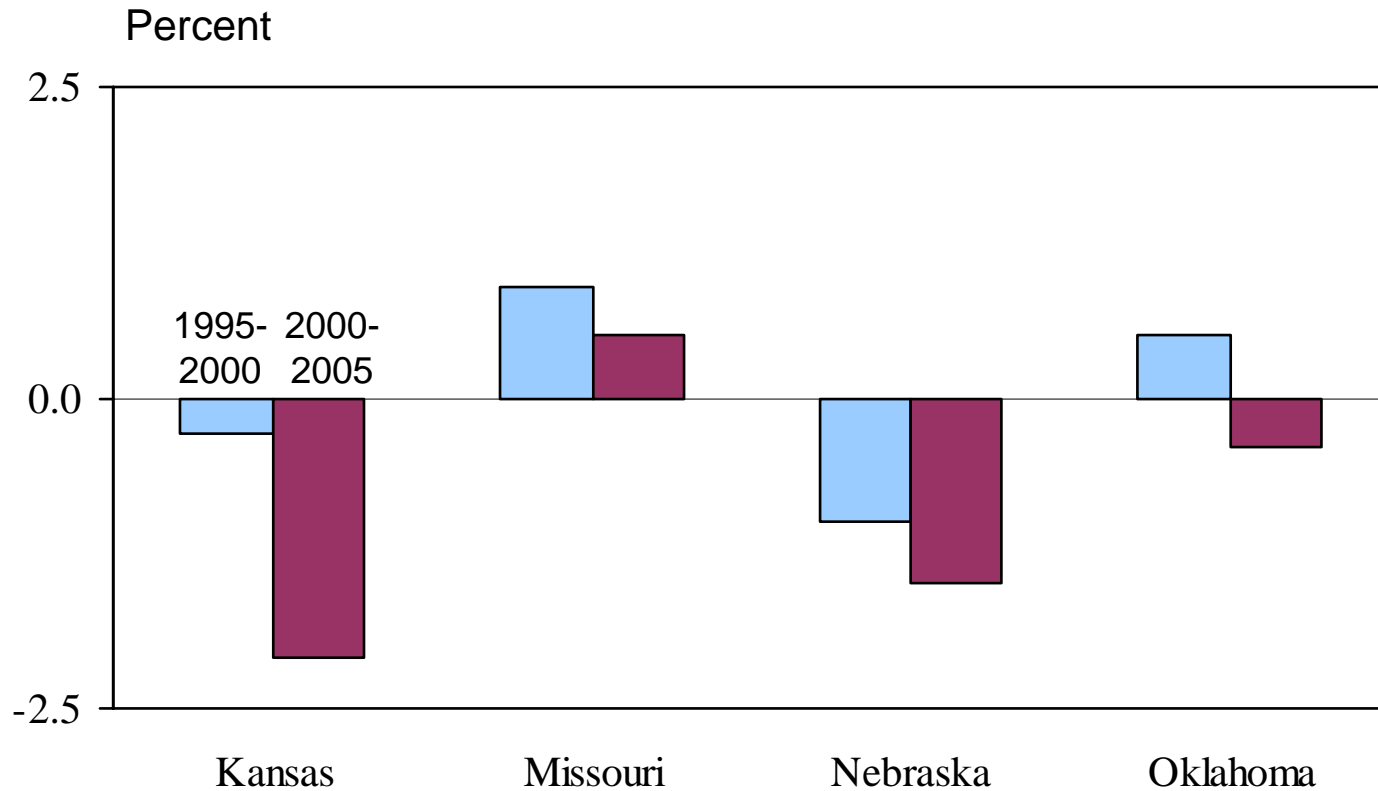
1995-2000

| <u>Kansas</u> | <u>Missouri</u> |
|----------------------|------------------------|
| California (15K) | California (15K) |
| Iowa (2K) | Illinois (14K) |
| Nebraska (2K) | Iowa (5K) |
| Colorado (-2K) | Kansas (5K) |
| Oklahoma (-3K) | Nebraska (4K) |
| Florida (-3K) | Arkansas (3K) |
| Missouri (-5K) | Arizona (-3K) |
| Texas (-5K) | Florida (-9K) |

Source: Census Bureau

Chart 5

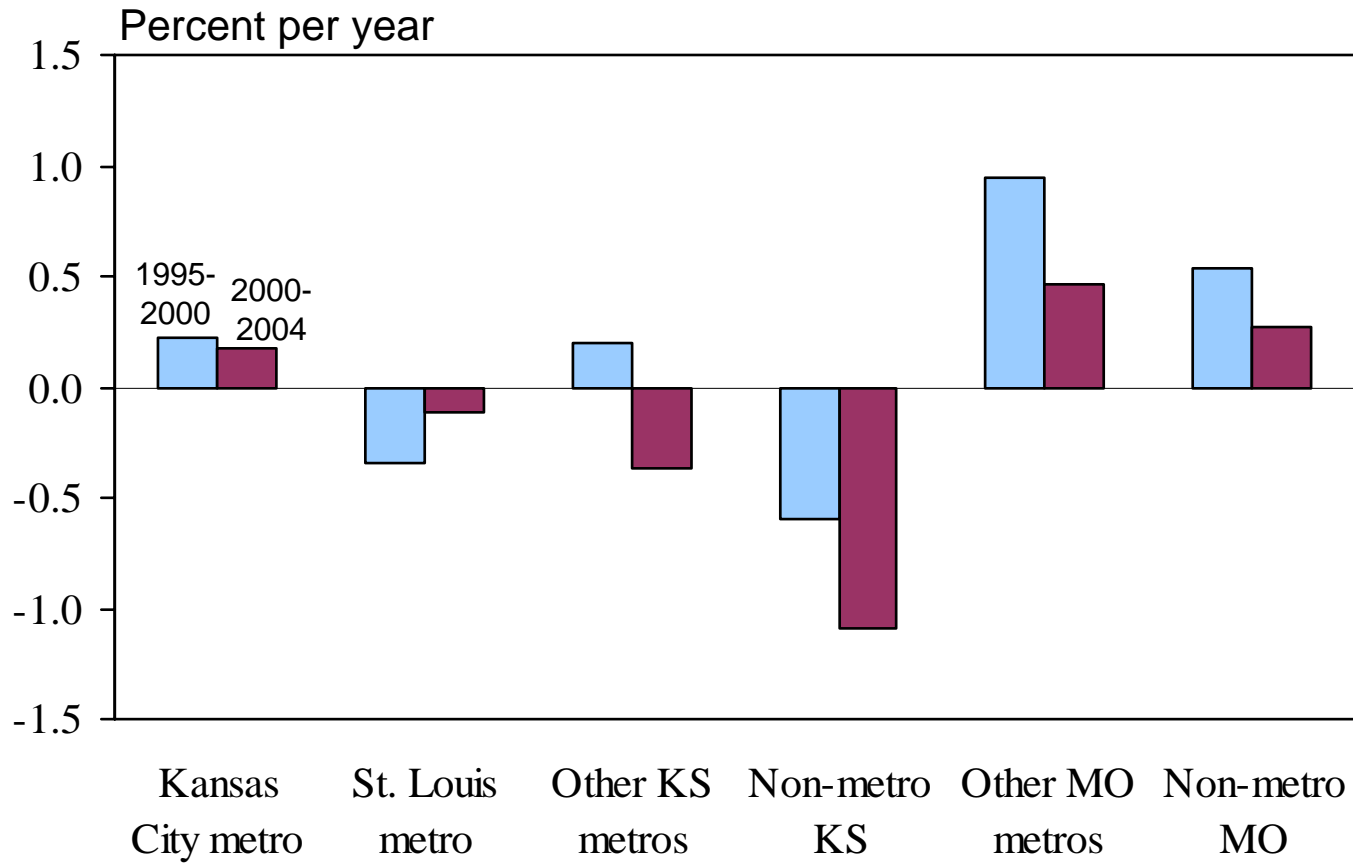
Net In-Migration to Heartland States in the Last 10 Years



Source: Census Bureau

Chart 6

Net In-Migration to Different Areas of Kansas and Missouri

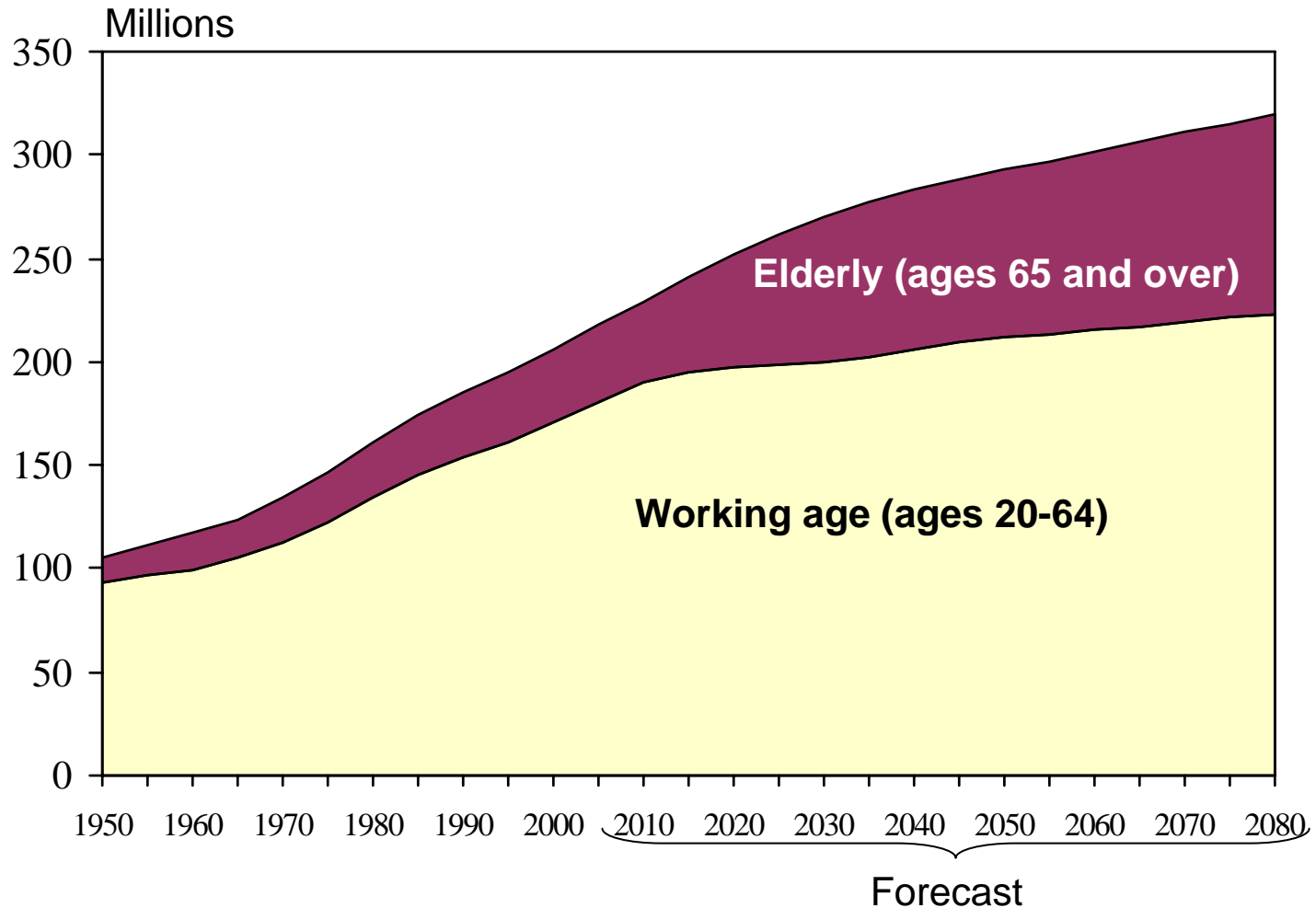


Source: Census Bureau

Do Kansas and Missouri need to
attract more people?

Chart 7

U.S. Working-Age vs. Elderly Population

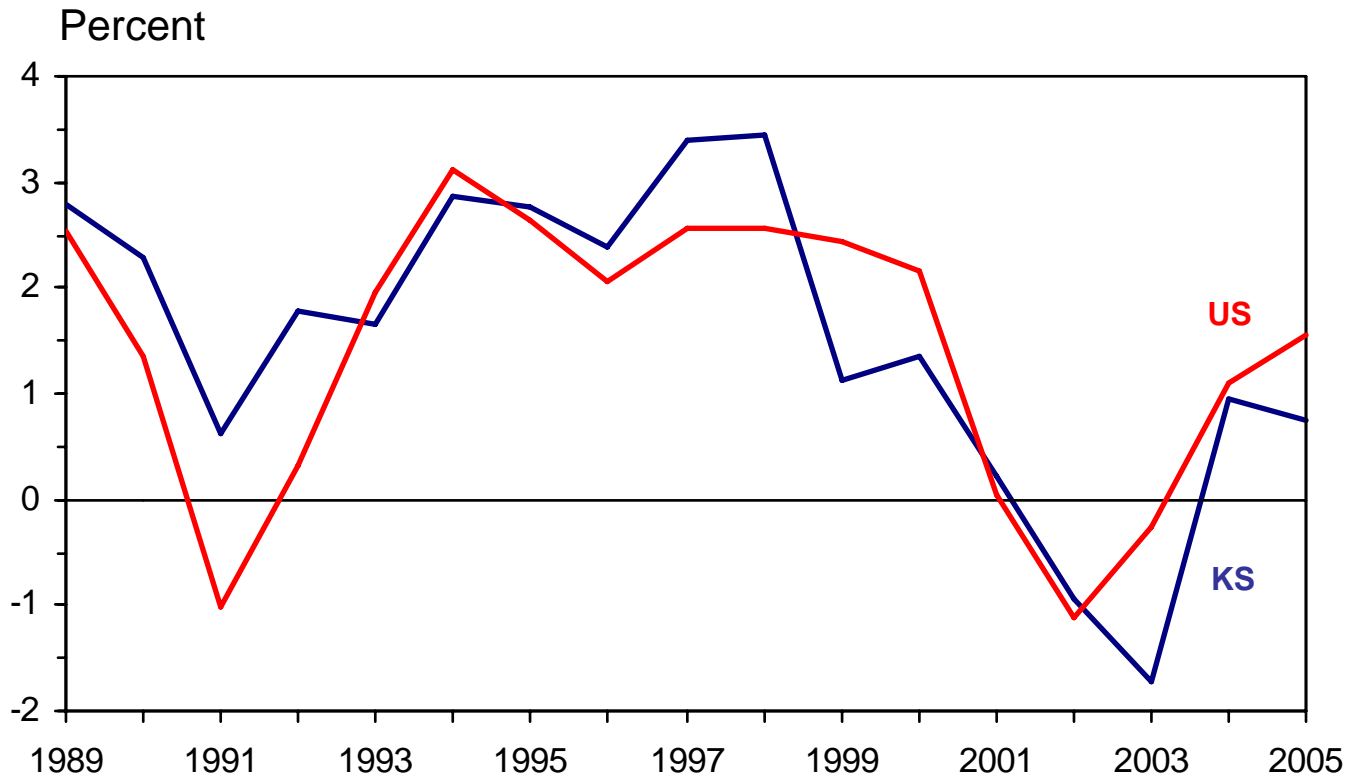


Source: Social Security Administration

Will net in-migration to the region
turn back up?

Chart 8

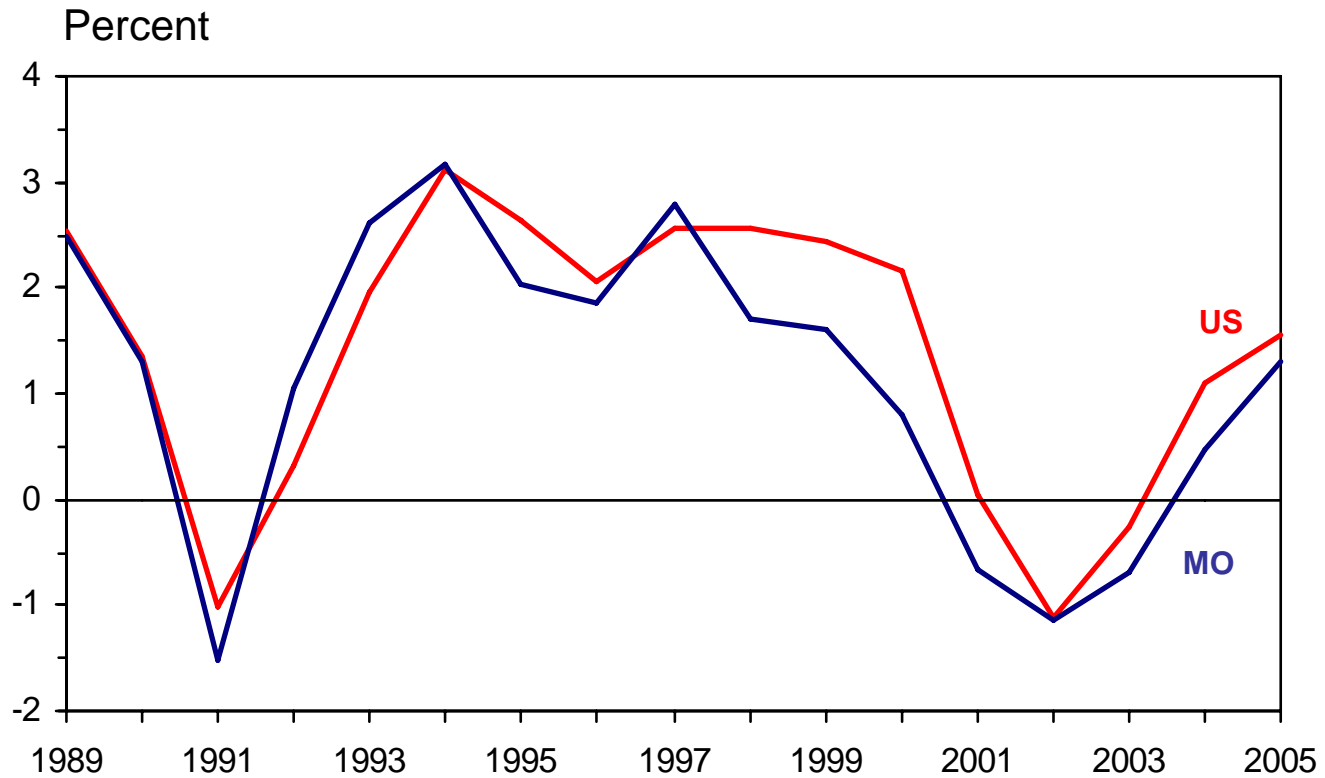
Kansas Employment Growth



Source: Bureau of Labor Statistics

Chart 9

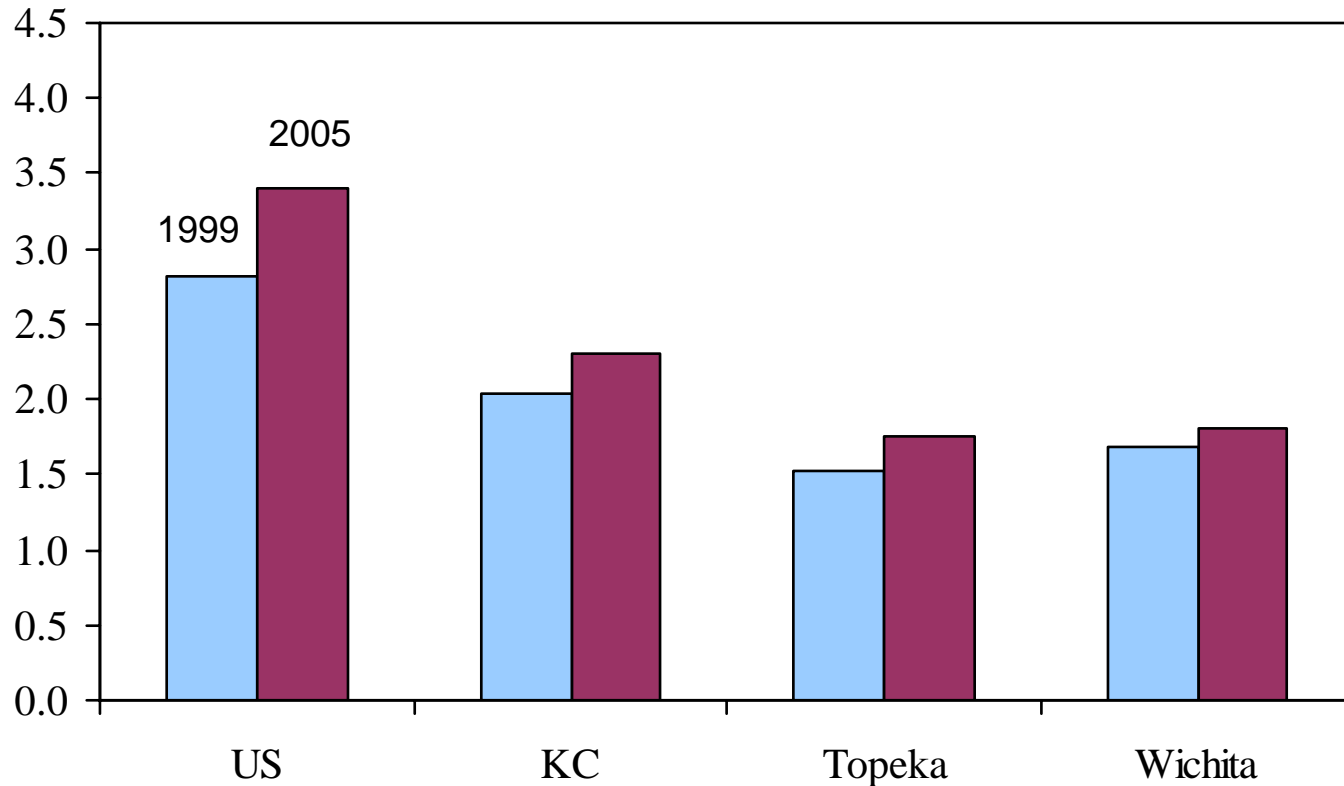
Missouri Employment Growth



Source: Bureau of Labor Statistics

Chart 10

Ratio of Median Home Price to Median Family Income

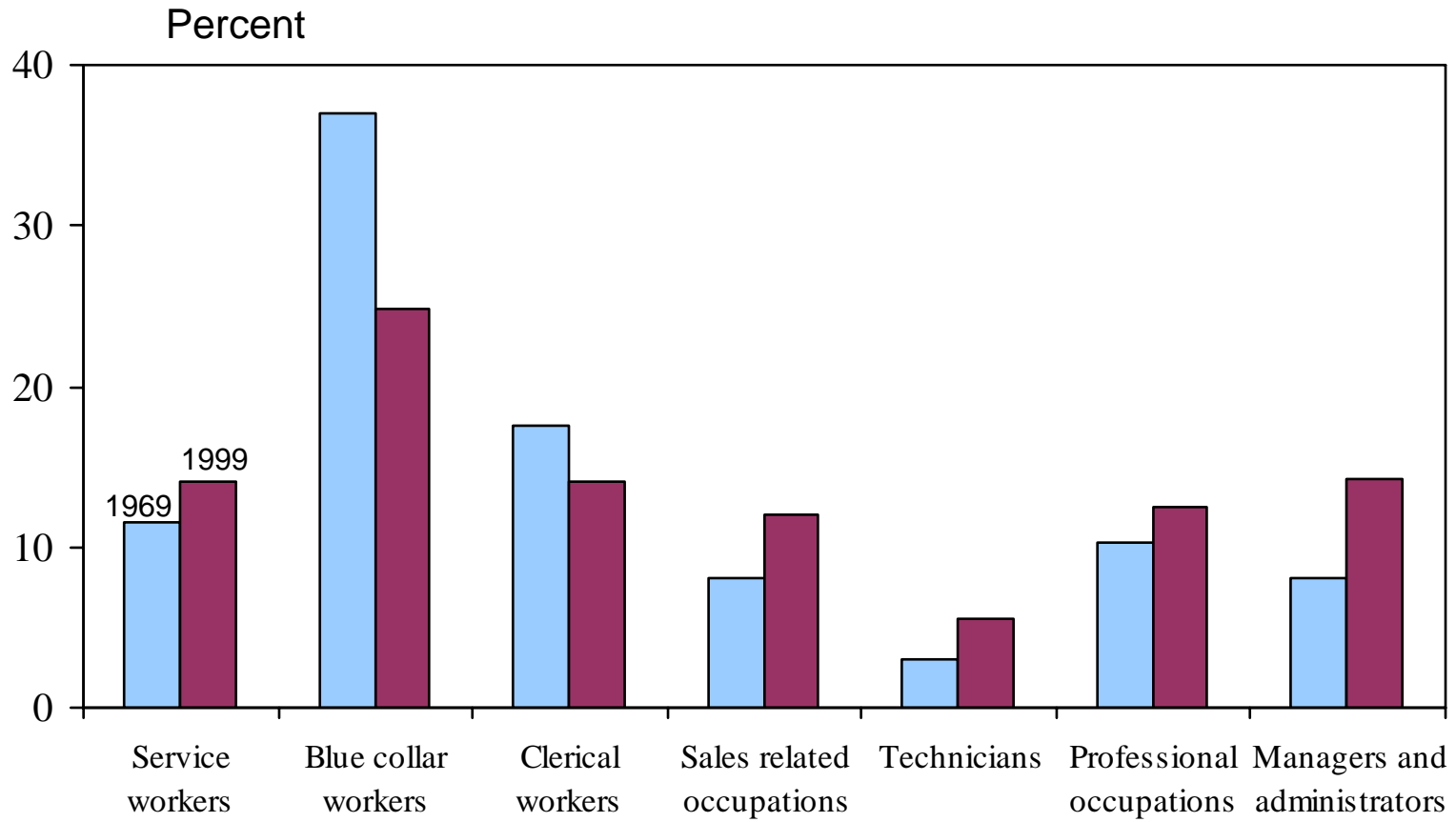


Sources: National Association of Realtors, OFHEO, HUD

Impact of migration on the quality of
the region's labor force

Chart 11

Occupational Distribution of Jobs in U.S., 1969 vs. 1999

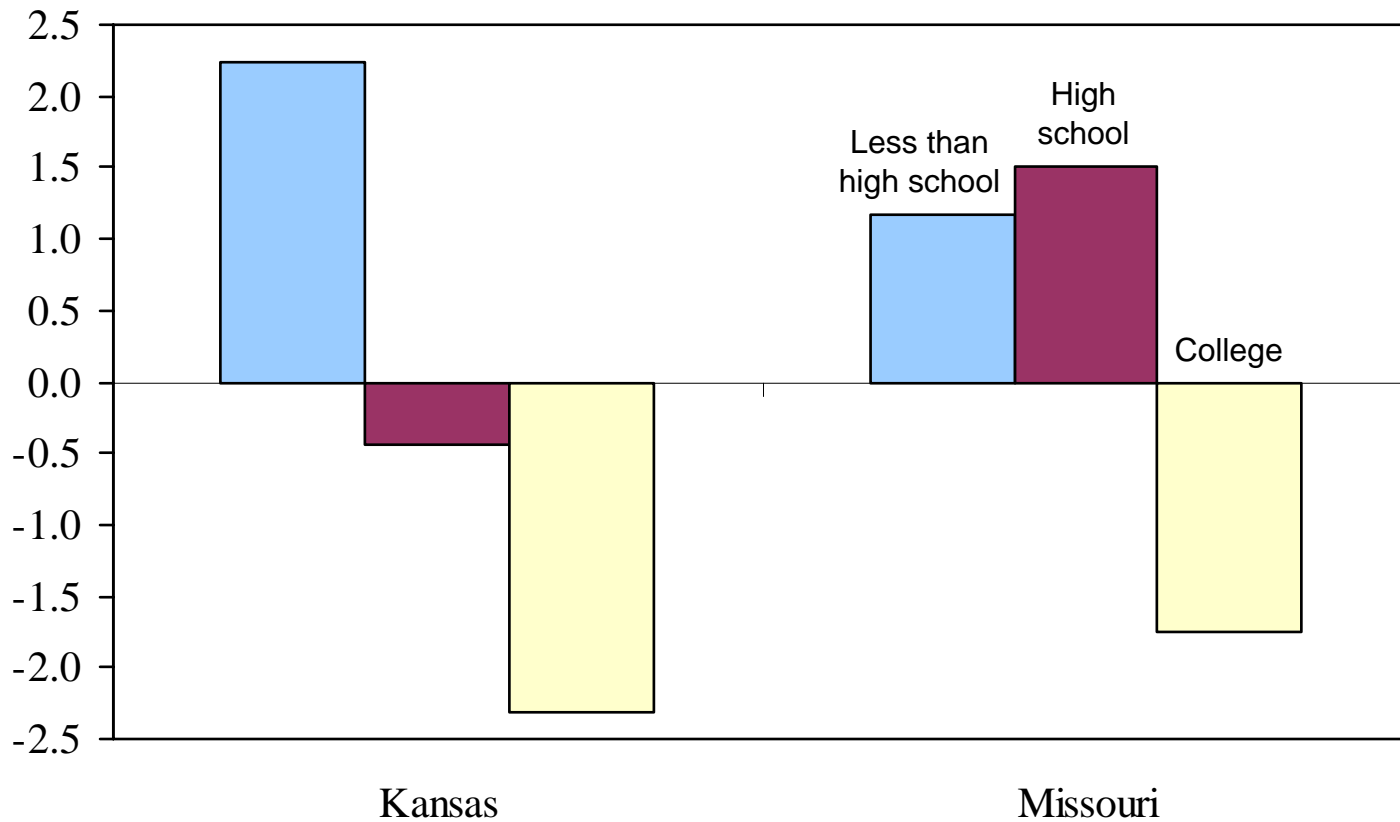


Source: Frank Levy and Richard Murnane

Chart 12

Net In-Migration by Education, 1995-2000*

Percent of 1995 population in category

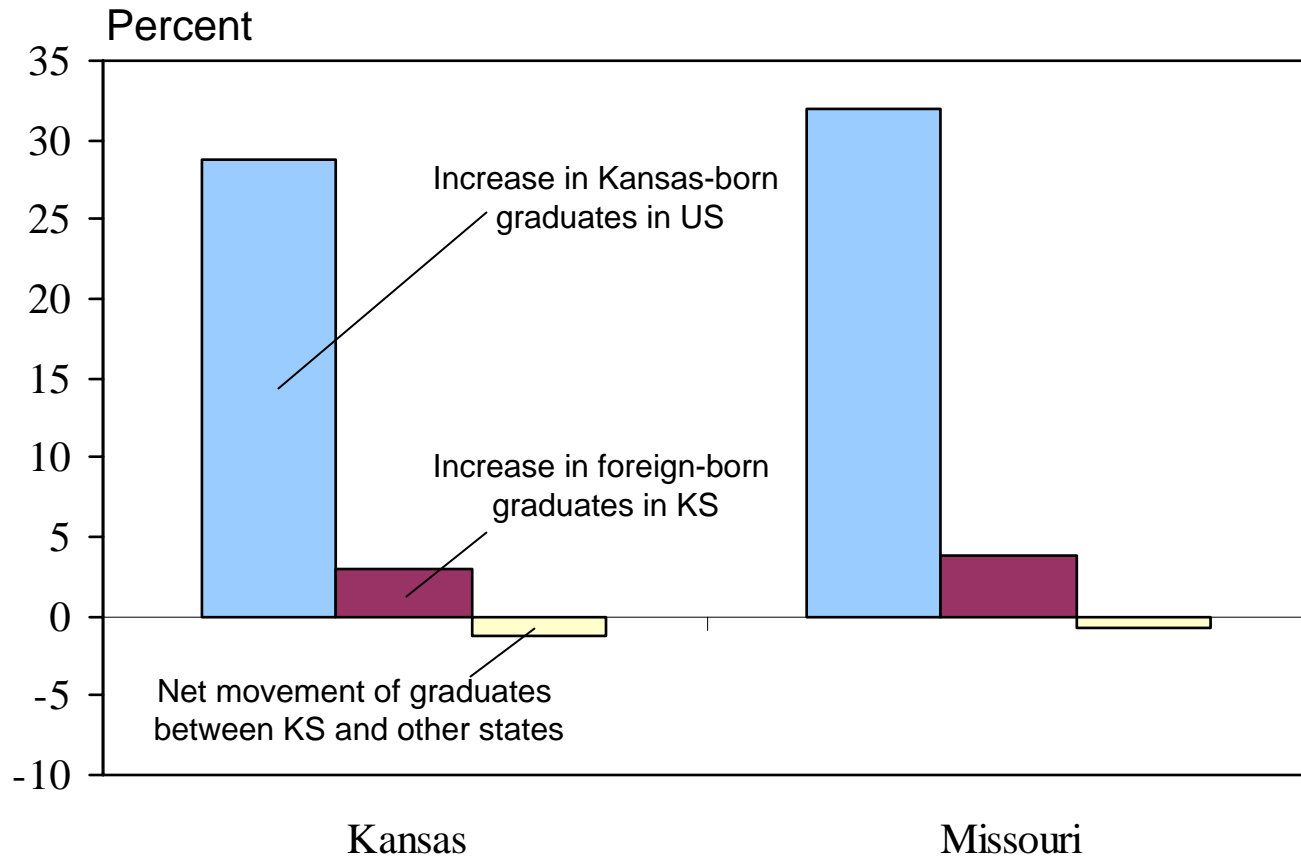


Source: Census Bureau

* For people 25 years or older in 2000

Chart 13

Sources of Growth in College Graduates in Kansas and Missouri 1990-2000



Source: Census Bureau

How to attract more highly educated workers:

Improve skills at all levels, including blue collar and clerical workers

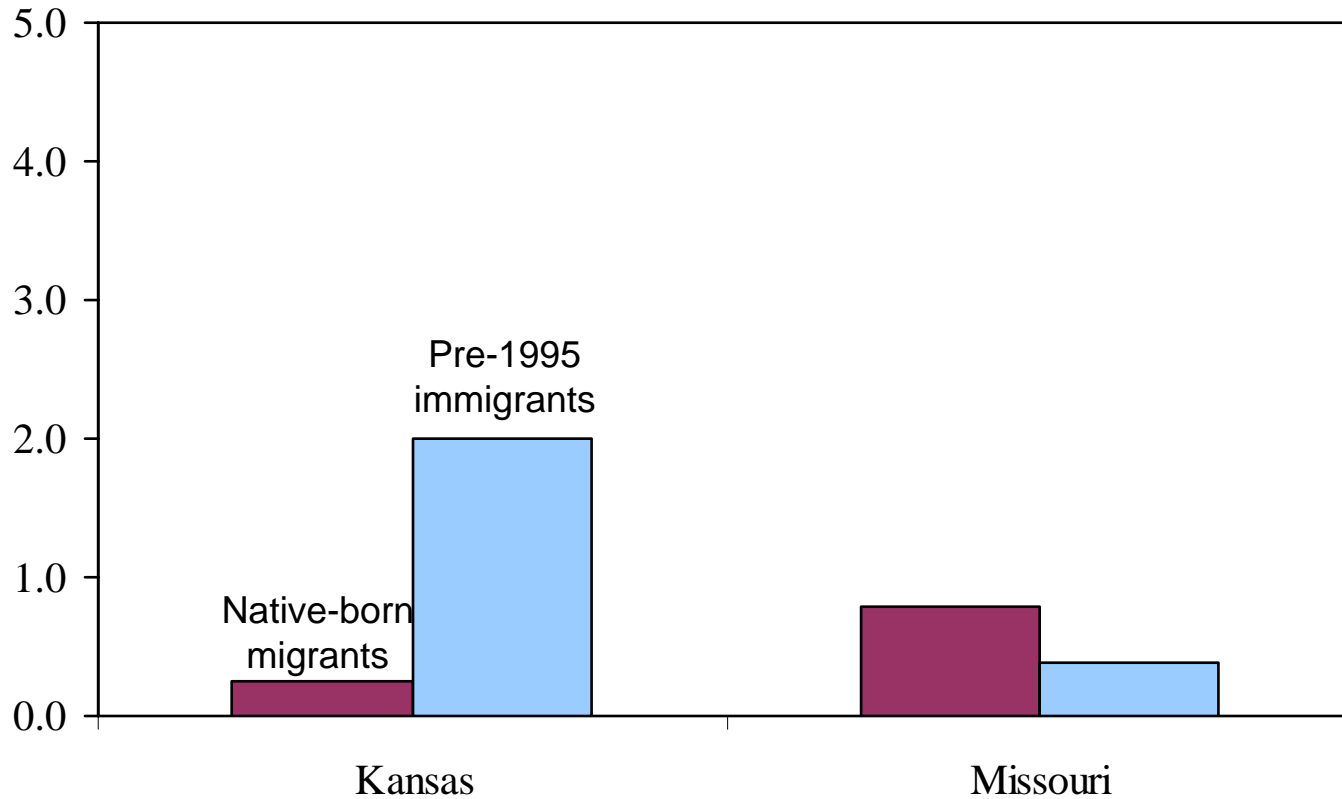
- More firms will choose to locate in the region
- More jobs will become available for highly educated workers
- “Brain drain” will turn into “brain gain”

Impact of migration on the supply
of unskilled workers in the region

Chart 15

Net In-Migration of High School Dropouts, 1995-2000

Percent of 1995 population in category

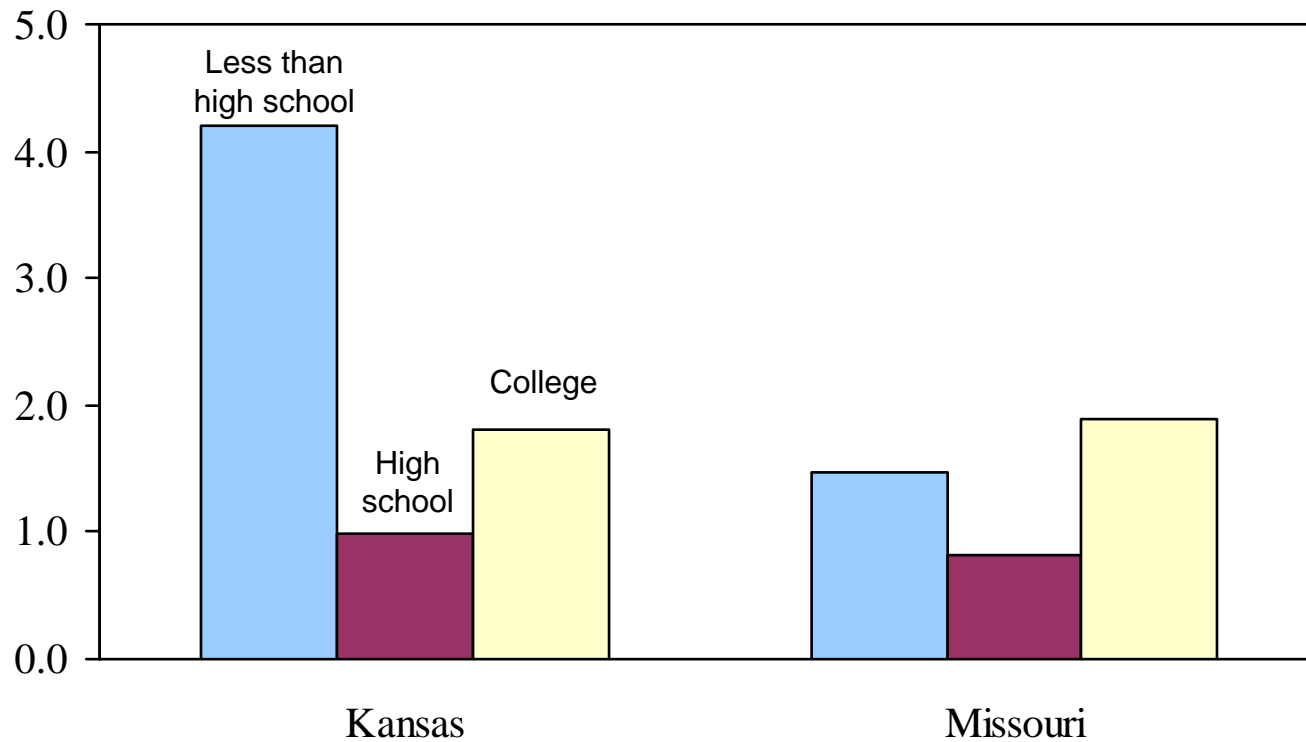


Source: Census Bureau

Chart 16

Immigration from Abroad, 1995-2000

Percent of 1995 population in category



Source: Census Bureau

Chart 17

Kansas and Missouri Industries with High Concentration of Unskilled Immigrants*

2000

| Industry | (1) Percent of all unskilled immigrants | (2) Percent of all unskilled natives | Ratio of (1) to (2) |
|------------------------|--|---|--------------------------------|
| Restaurants | 13.3 | 8.6 | 1.6 |
| Meatpacking | 11.5 | 0.8 | 14.3 |
| Construction | 8.2 | 9.2 | 0.9 |
| Traveler accommodation | 2.7 | 1.1 | 2.4 |
| Grocery stores | 2.2 | 3.2 | 0.7 |
| Department stores | 1.9 | 2.7 | 0.7 |
| Hospitals | 1.7 | 2.5 | 0.7 |
| Landscaping | 1.7 | 0.7 | 2.3 |

* High school degree or less

Source: Census Bureau

