



FEDERAL RESERVE BANK *of* KANSAS CITY

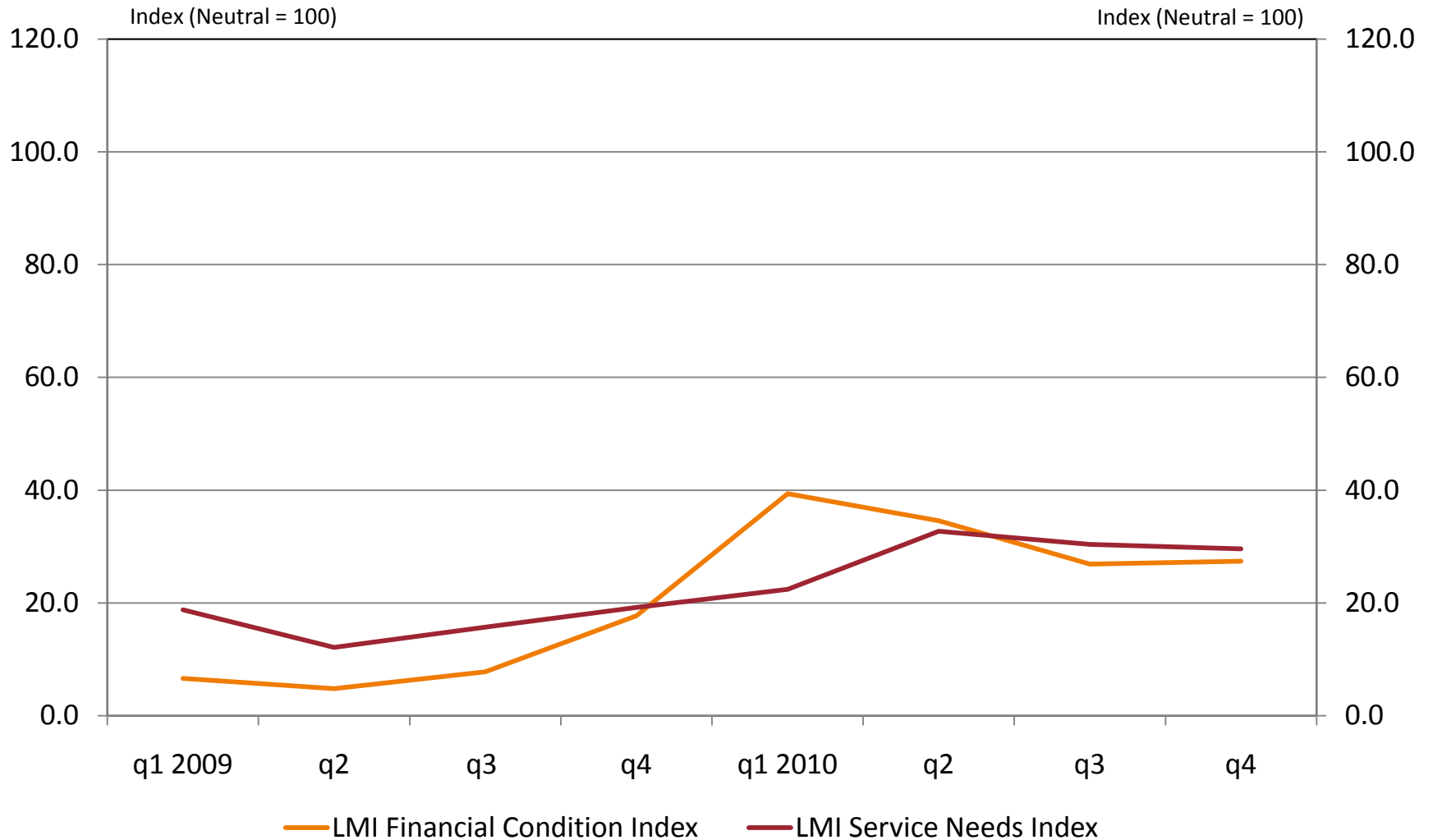
# Financial Status of the Low- and Moderate-Income Community Community Development Advisory Council

Kelly D. Edmiston

Federal Reserve Bank of Kansas City

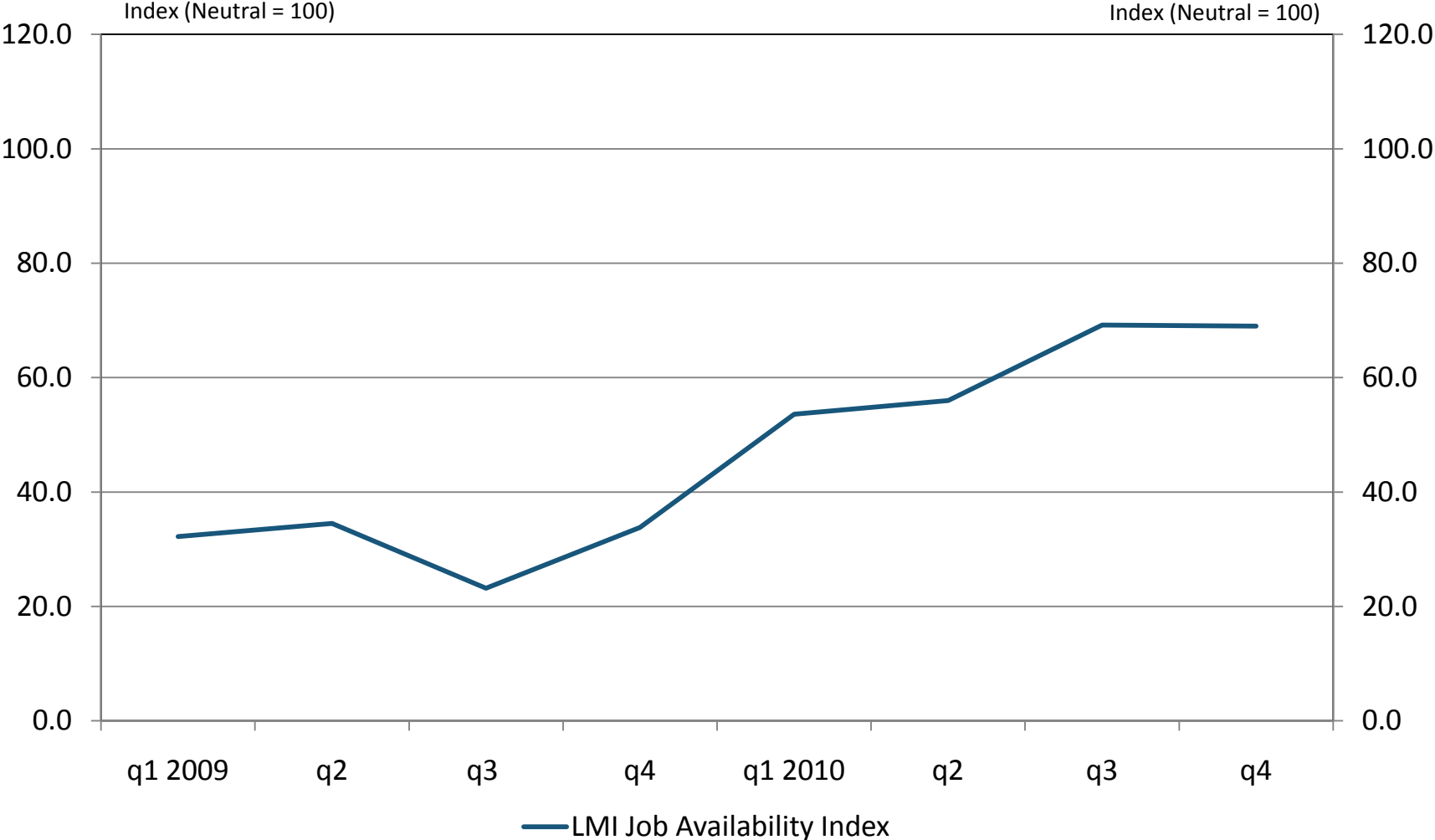
March 30, 2011

# Overall Financial Health



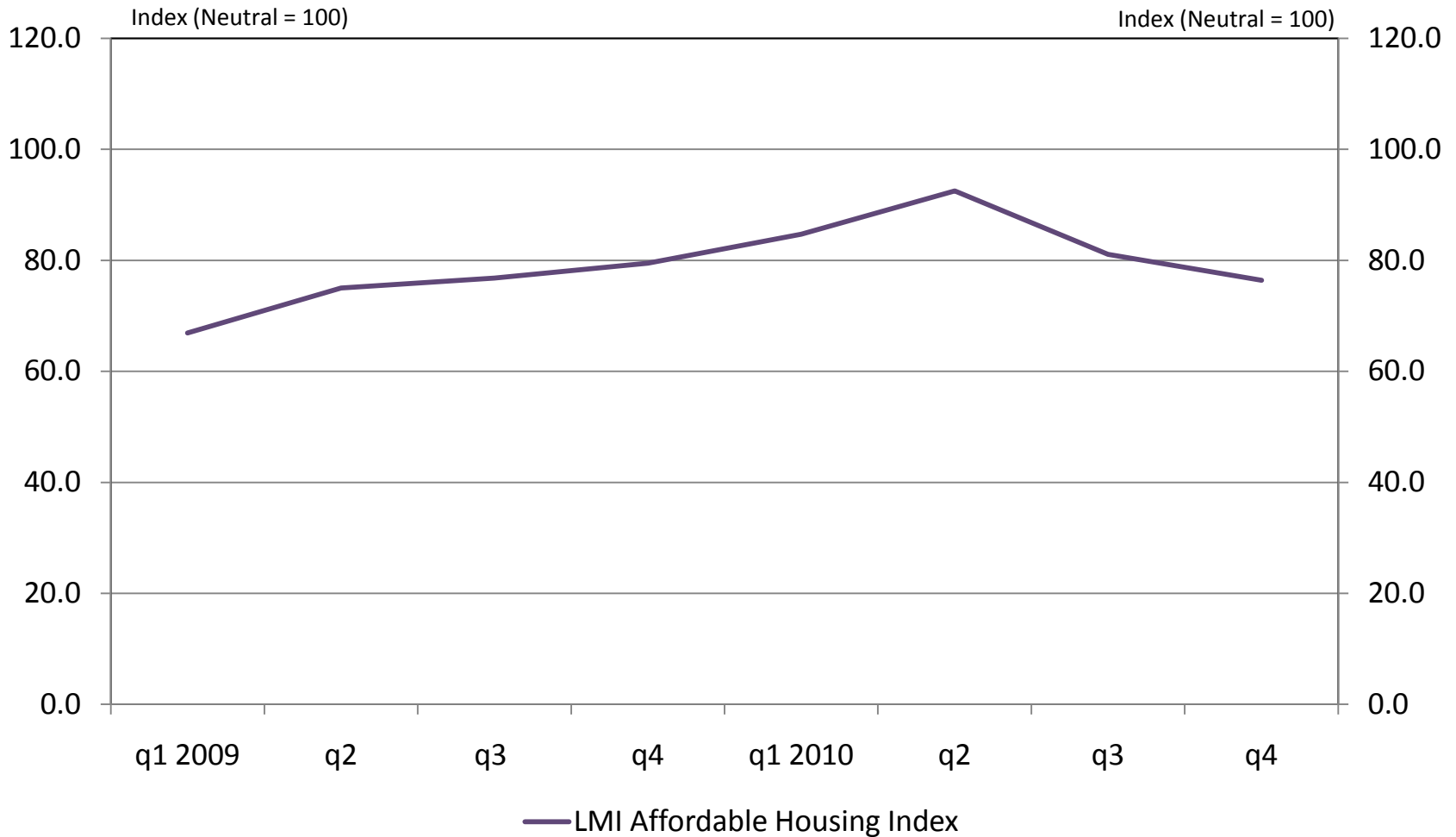
Source: Federal Reserve Bank of Kansas City Low- and Moderate-Income Survey (last update 1/28/2011)

# Job Availability



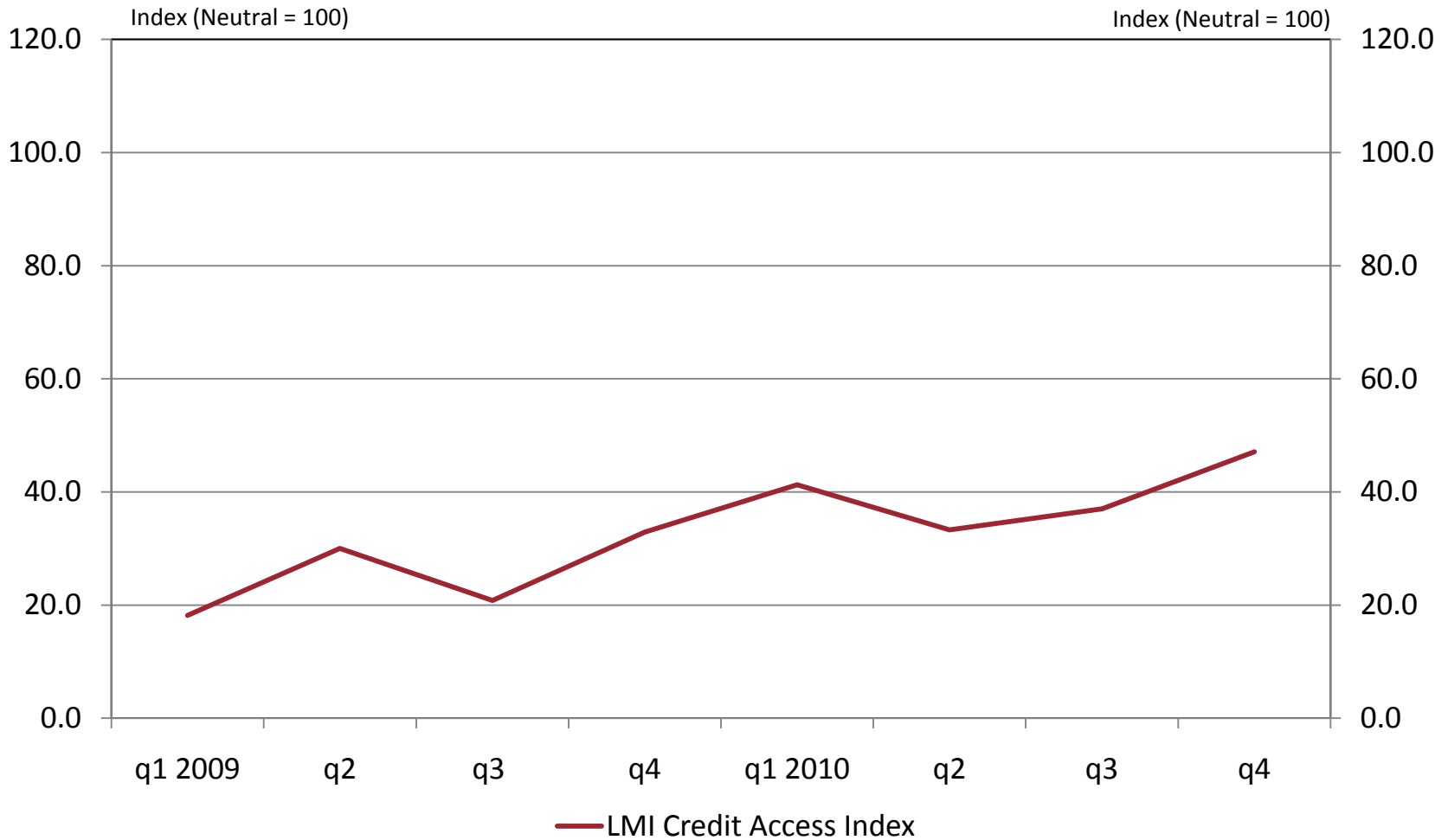
Source: Federal Reserve Bank of Kansas City Low- and Moderate-Income Survey (last update 1/28/2011)

# Availability of Affordable Housing



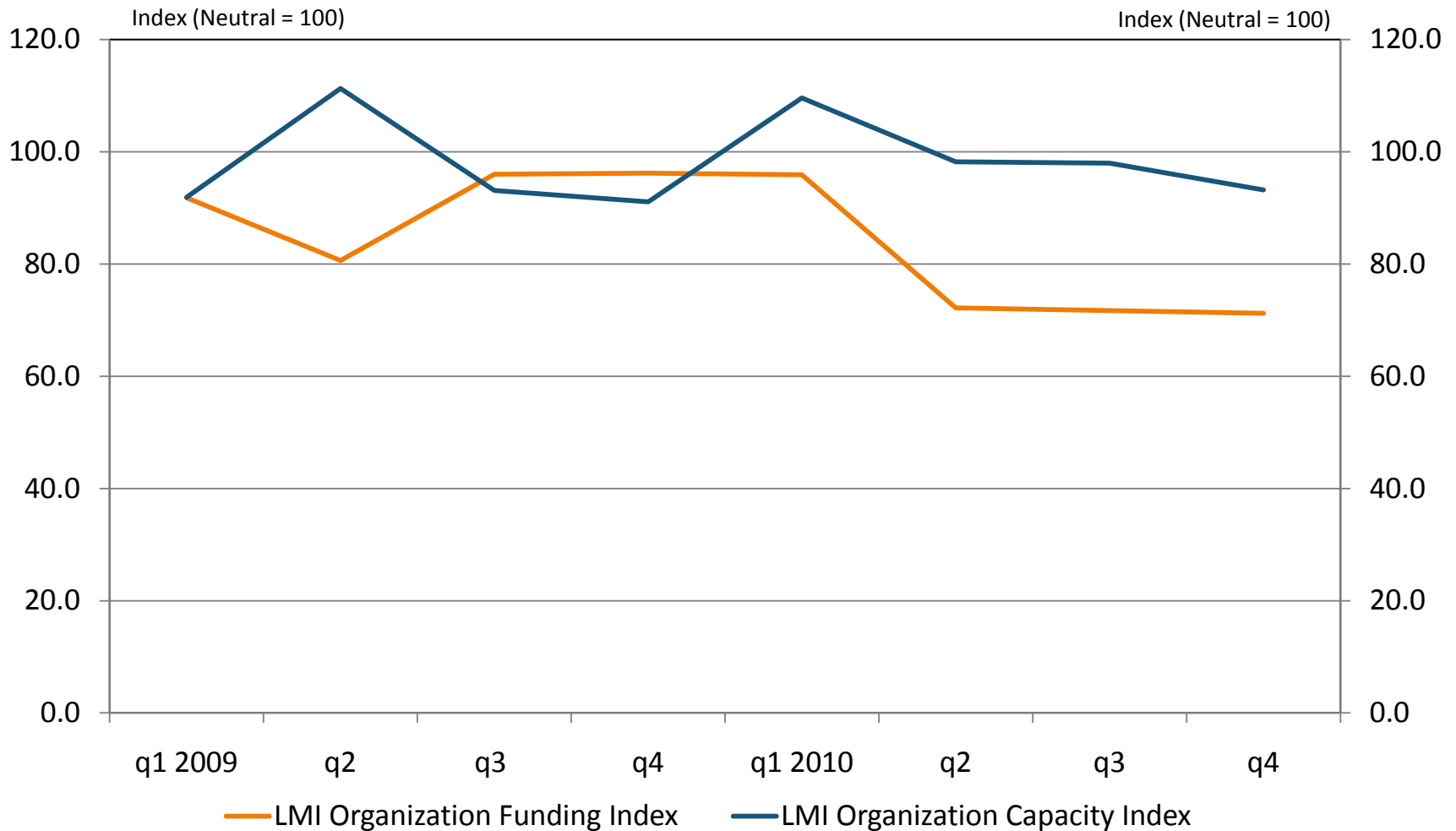
Source: Federal Reserve Bank of Kansas City Low- and Moderate-Income Survey (last update 1/28/2011)

# Credit Access



Source: Federal Reserve Bank of Kansas City Low- and Moderate-Income Survey (last update 1/28/2011)

# Community Development Organizations



Source: Federal Reserve Bank of Kansas City Low- and Moderate-Income Survey (last update 1/28/2011)



## FEDERAL RESERVE BANK *of* KANSAS CITY

### **Contact Information:**

Kelly D. Edmiston  
Senior Economist  
Community Development

1 Memorial Drive  
Kansas City, MO 64198  
(816) 881-2004  
[Kelly.edmiston@kc.frb.org](mailto:Kelly.edmiston@kc.frb.org)