



FEDERAL RESERVE BANK *of* KANSAS CITY

Mortgage Delinquencies, Foreclosures, and Vacancies in Omaha, NE

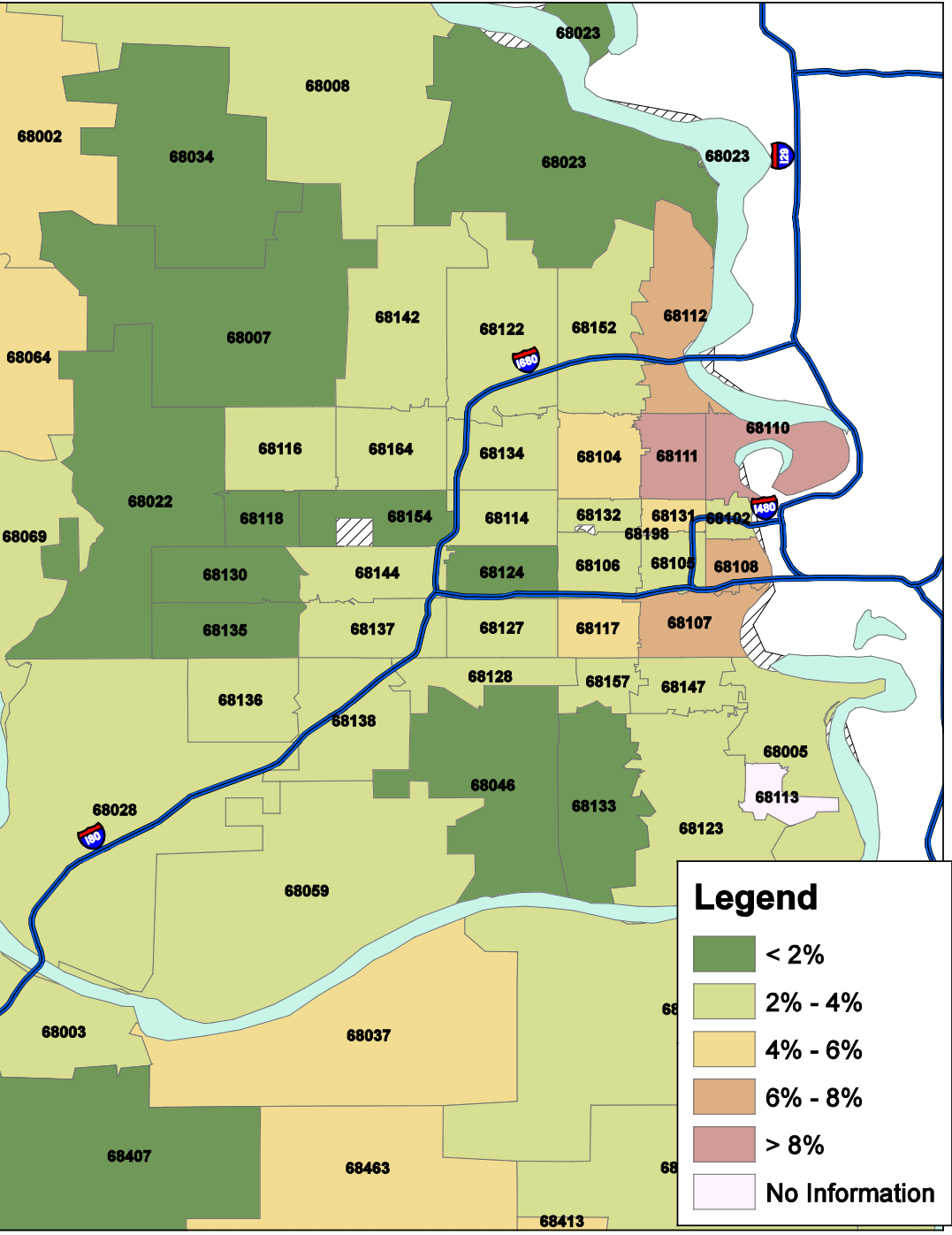
Kelly D. Edmiston
Federal Reserve Bank of Kansas City

Affordable Housing Round Table Luncheon
Omaha, NE
May 2, 2011

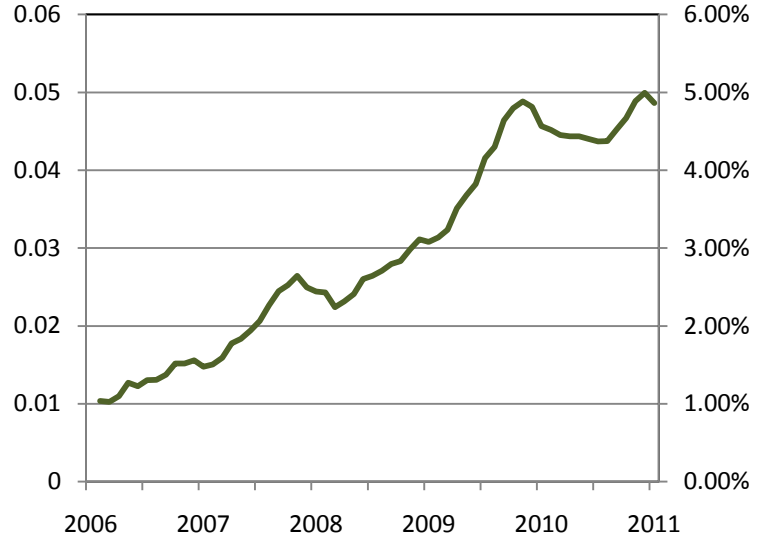
Mortgage Situation

Status of Mortgage Pool	Nebraska	Omaha Metro	Omaha City	USA
Delinquent 30 days	2.1	2.1	2.4	2.6
Delinquent 60 days	0.8	0.9	1.0	1.0
Delinquent 90 days +	1.6	1.8	2.0	3.3
In Foreclosure Process	1.3	1.3	1.4	3.8
SERIOUSLY DELINQUENT	2.9	3.1	3.4	7.0
TOTAL PAST DUE	5.8	6.0	6.8	10.8
Data Source: Lender Processing Services, Inc. (March 2011 data)				

Omaha Area Serious Delinquencies (March, 2011)

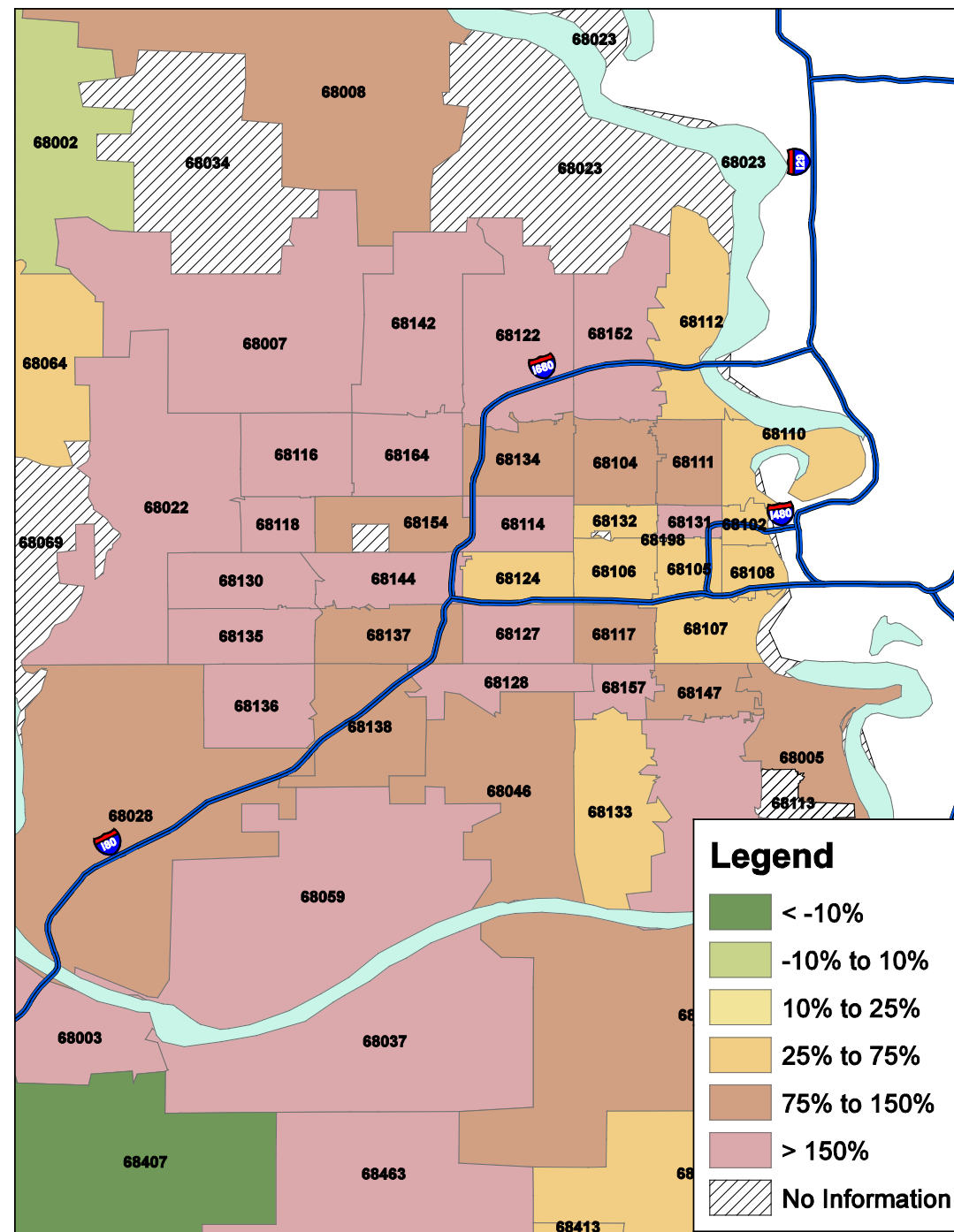


Serious Delinquency Rate Douglas County, NE (2002 and 2005 vintages)

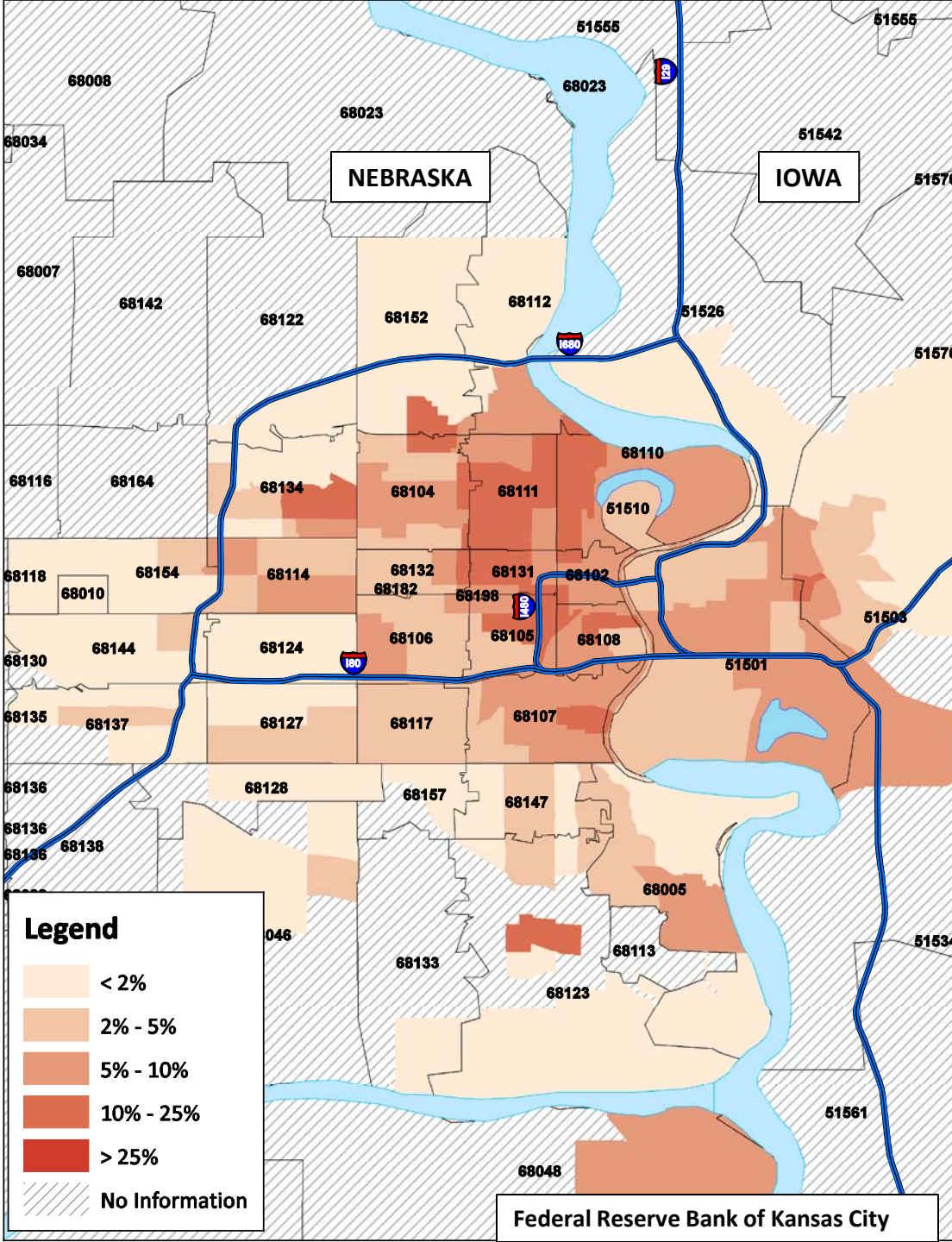


Source: Lender Processing Services, Inc.

Change in Serious Delinquency Rate (Mar 2006 – Mar 2011)



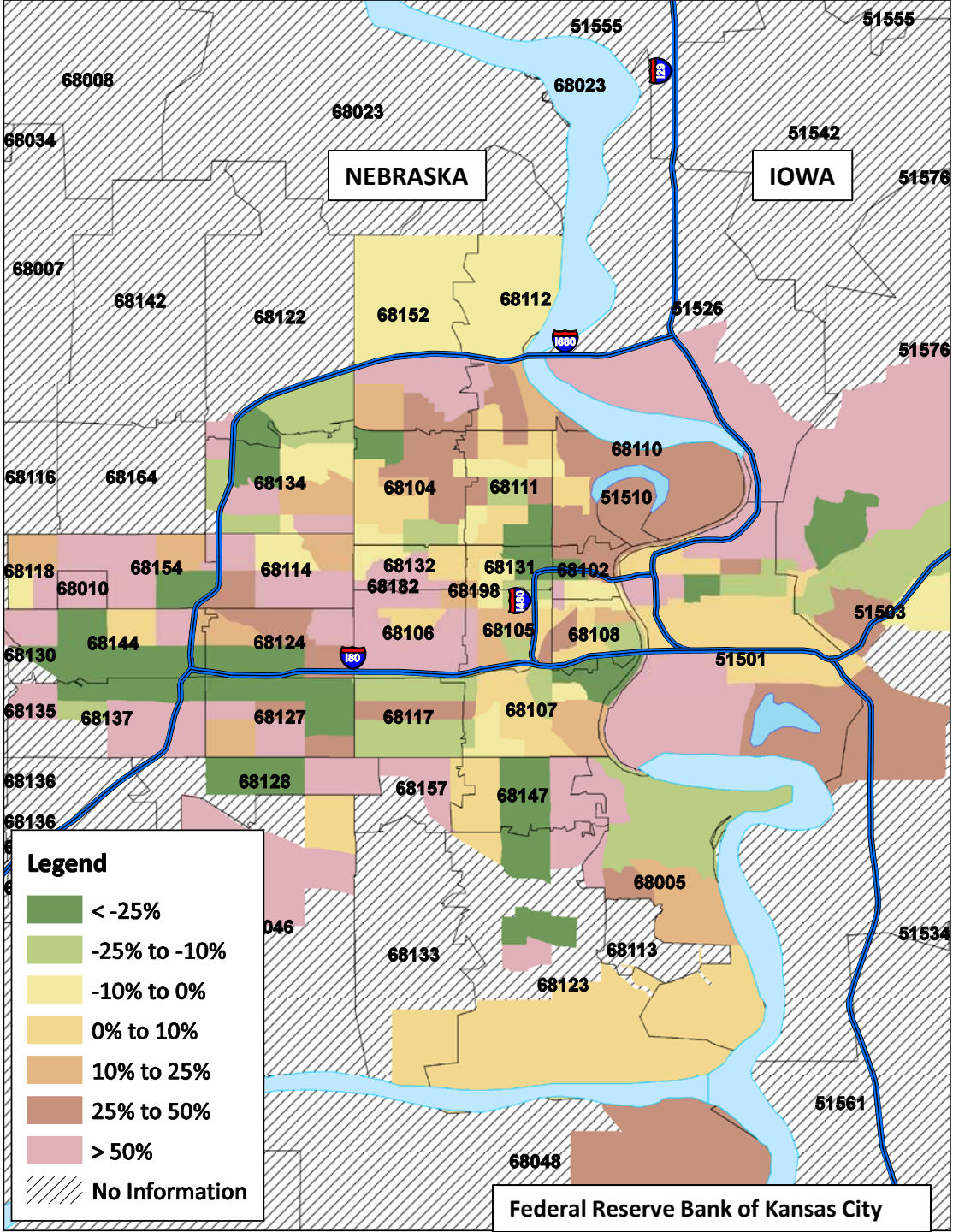
Vacancy Rates Omaha Metropolitan Area (September, 2010)



- 8,734 residential structures identified as vacant in Sep. 2010 using USPS data (estimate).
- The vacancy rate in Sep. 2010 was 7.9 percent.

Change in Vacancy Rates 2007 – 2010

- Omaha (city) vacancies increased by about 1,226 (16.3 percent)
- The Omaha (city) vacancy rate increased from 5.4 percent to 7.9 percent





FEDERAL RESERVE BANK *of* KANSAS CITY

Contact Information:

Kelly D. Edmiston
Senior Economist
Community Development

1 Memorial Drive
Kansas City, MO 64198
(816) 881-2004
Kelly.edmiston@kc.frb.org