



FEDERAL RESERVE BANK *of* KANSAS CITY

Employment Conditions in the Kansas City Area

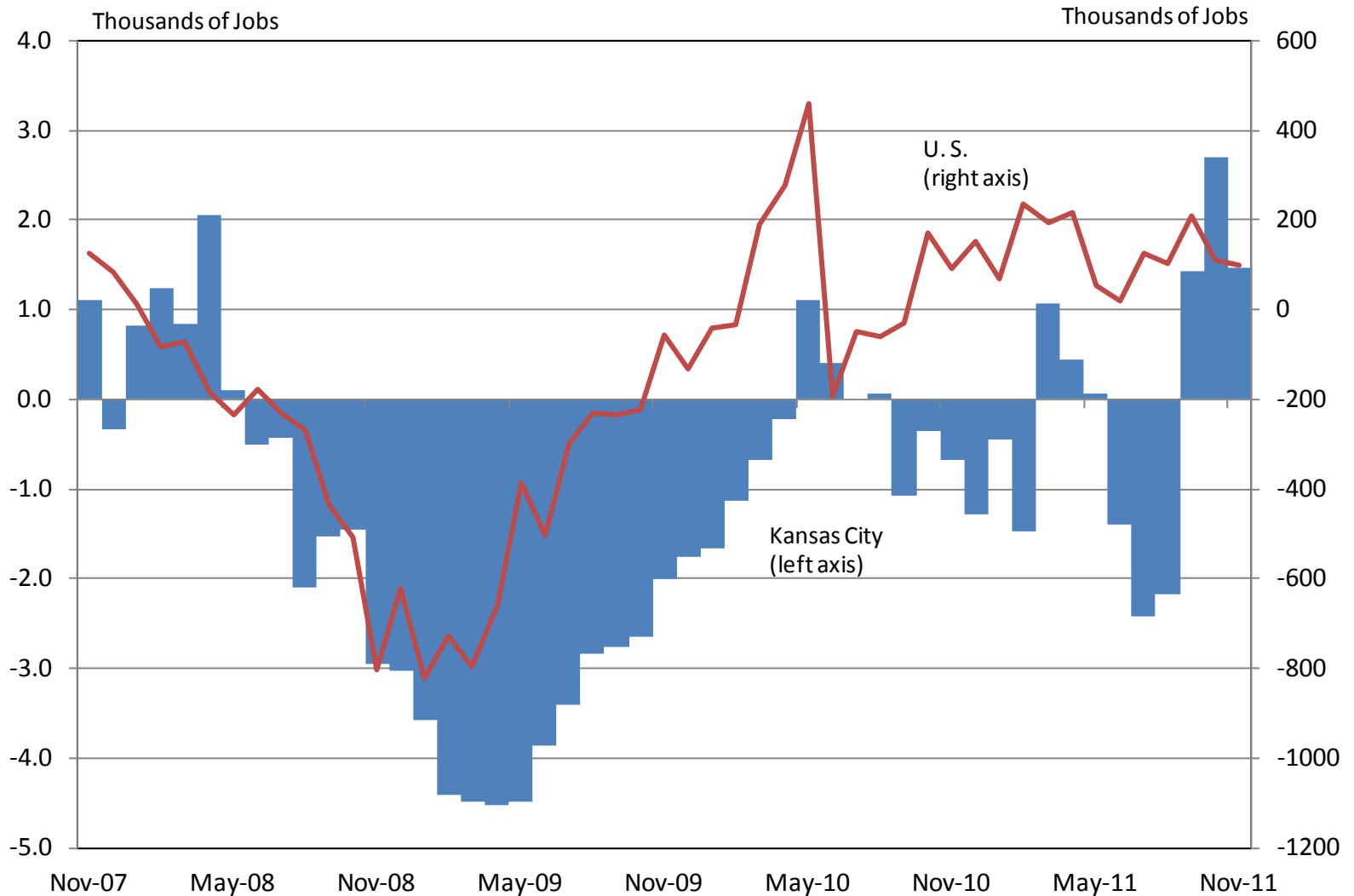
Kansas City Workforce Development Roundtable

Kelly D. Edmiston

January 23, 2012

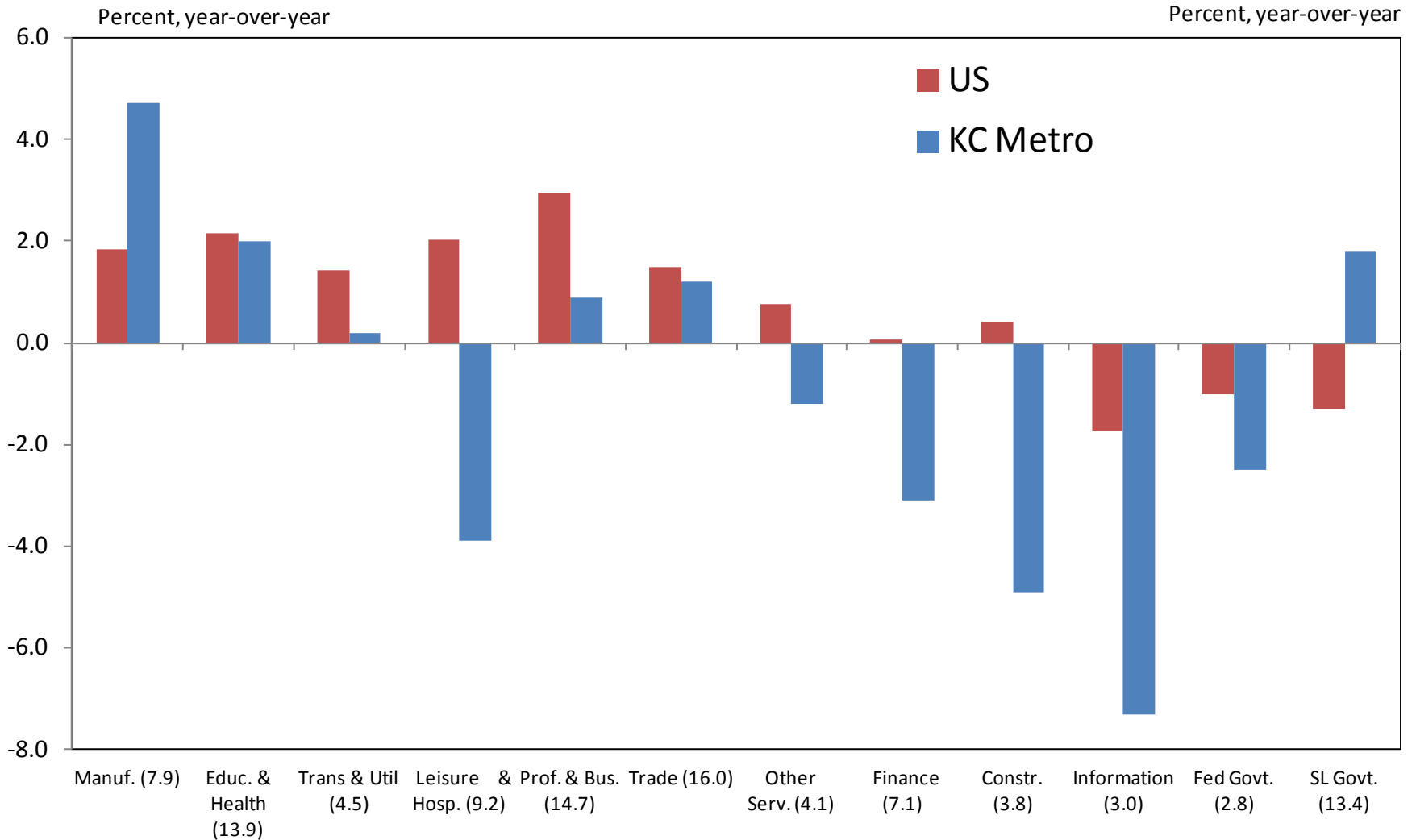
*Presented by Steven Shepelwich
Oklahoma City Branch*

Employment Growth



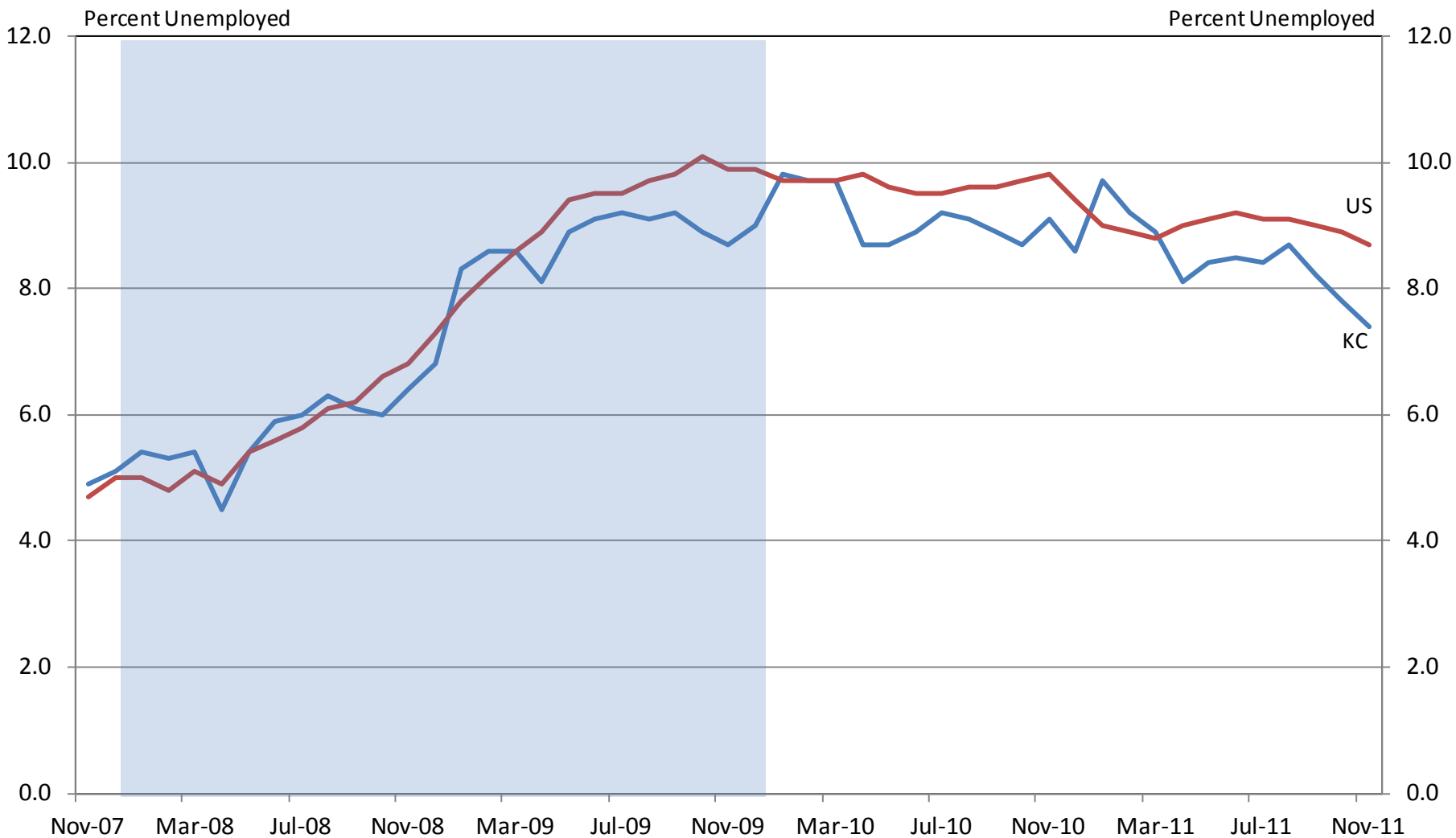
Source: U.S. Bureau of Labor Statistics

Job Growth by Sector



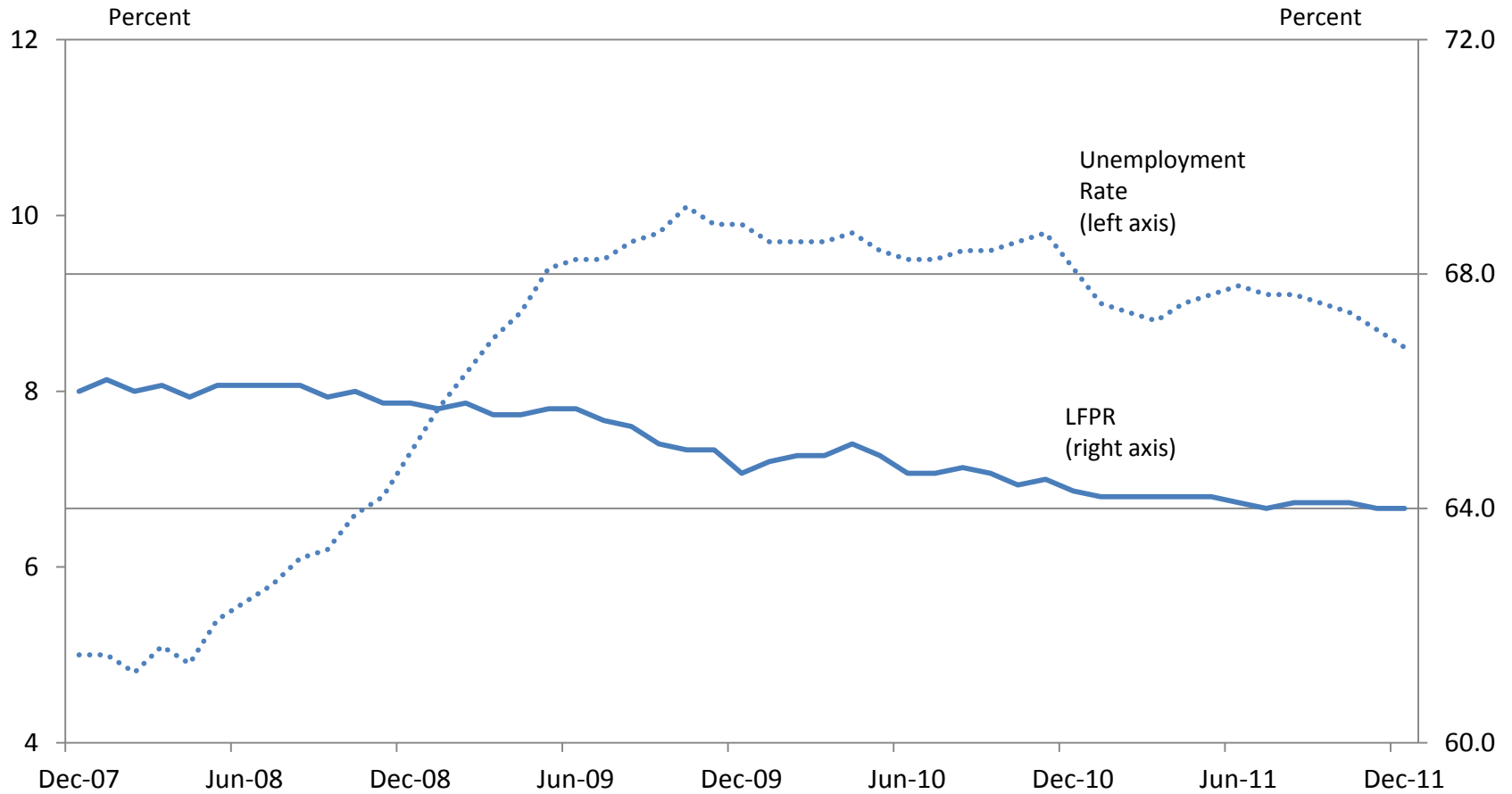
Source: U.S. Bureau of Labor Statistics

Unemployment Rate

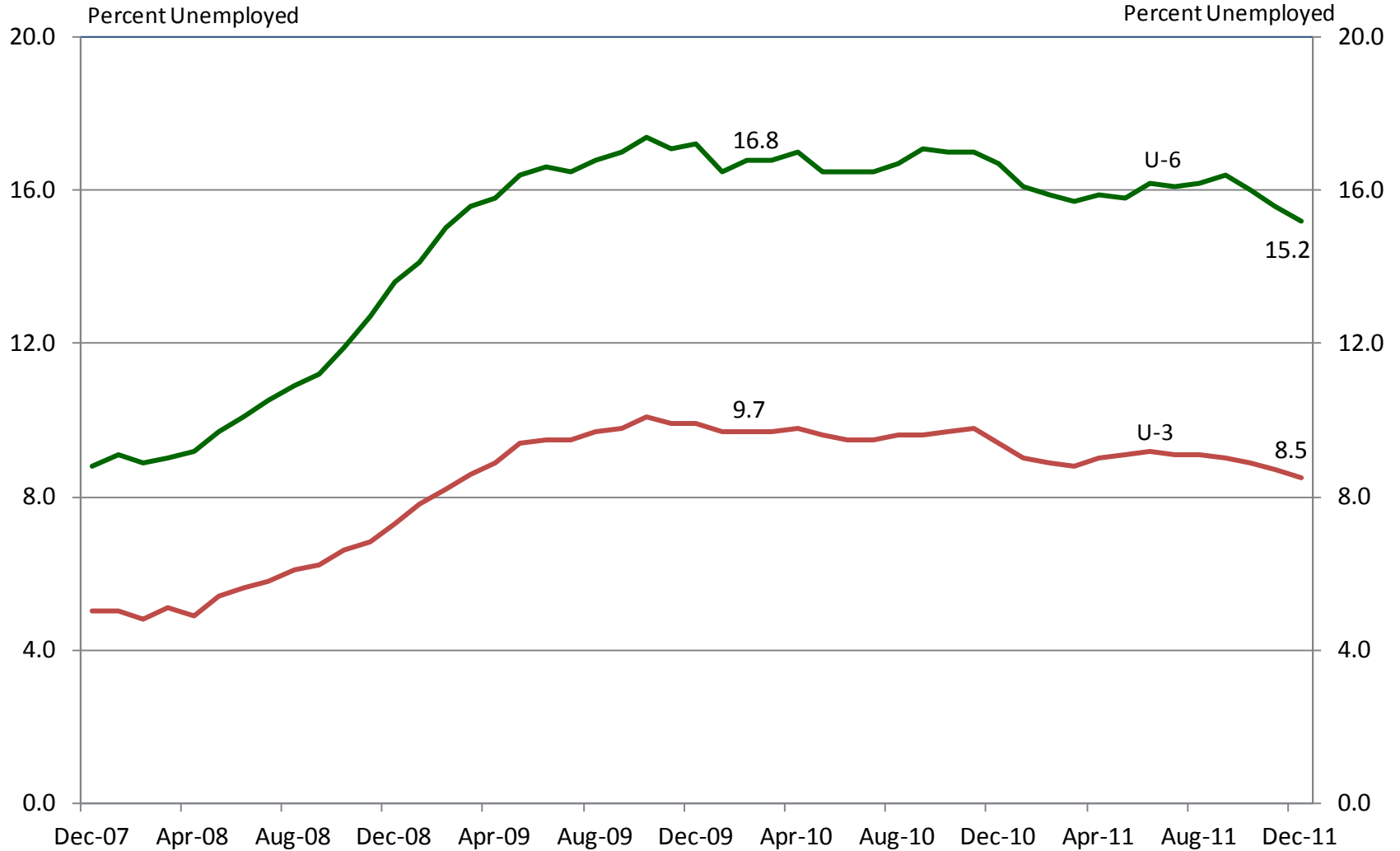


Source: U.S. Bureau of Labor Statistics

Unemployment and Labor Force Participation Rates



Expanded Unemployment Rate (U.S.)



The Jobs Deficit

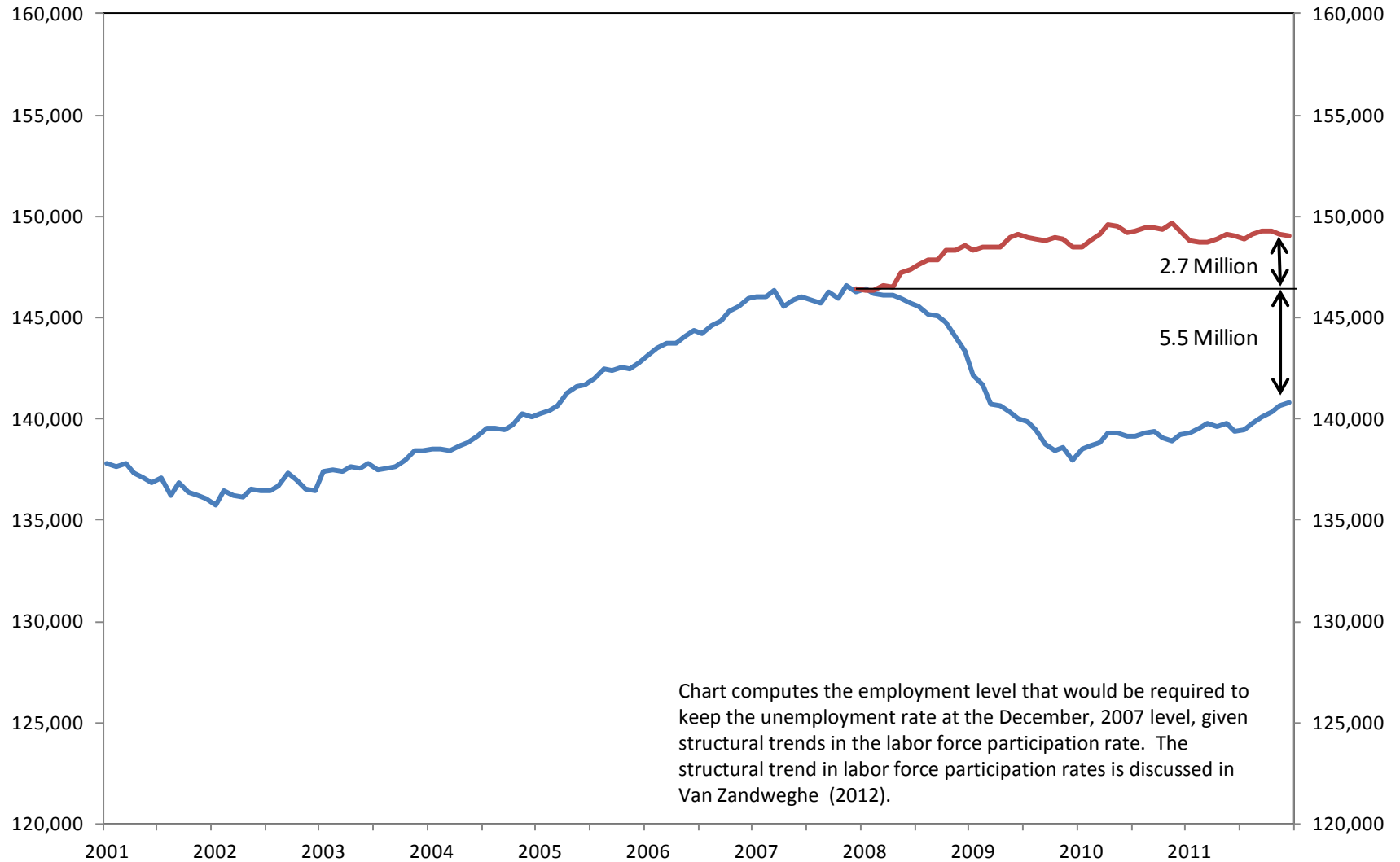
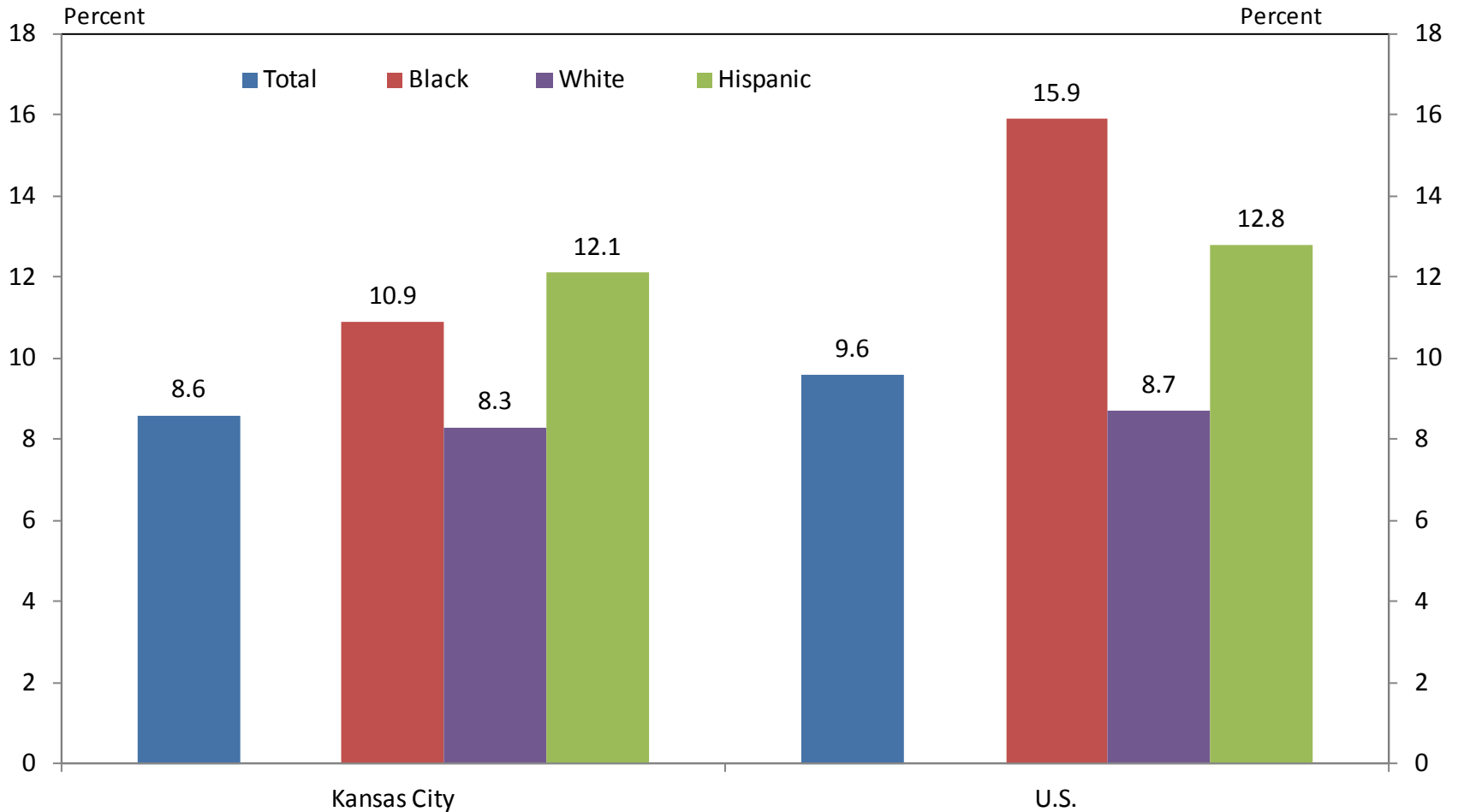


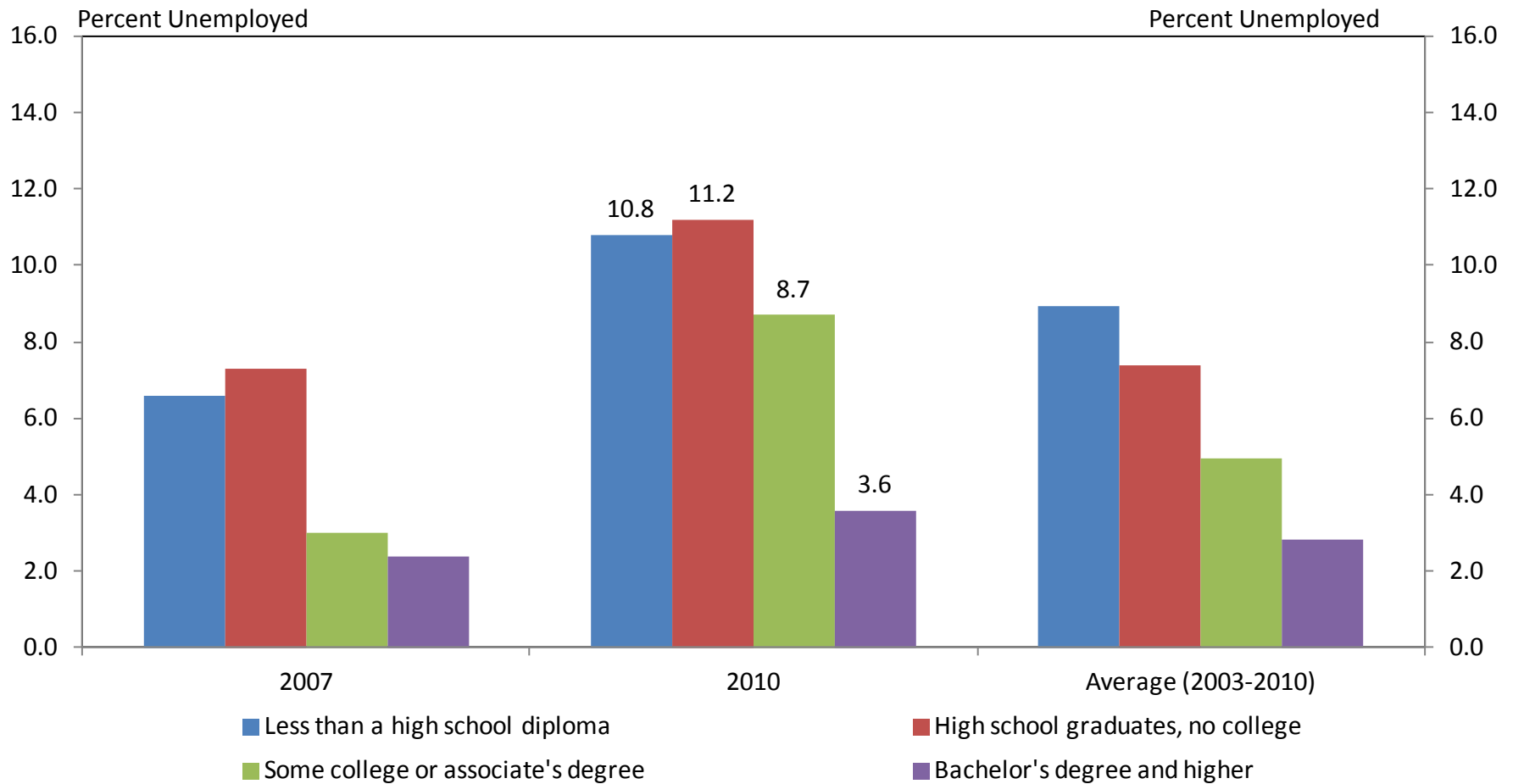
Chart computes the employment level that would be required to keep the unemployment rate at the December, 2007 level, given structural trends in the labor force participation rate. The structural trend in labor force participation rates is discussed in Van Zandweghe (2012).

Unemployment Rate by Race and Ethnicity (2010)

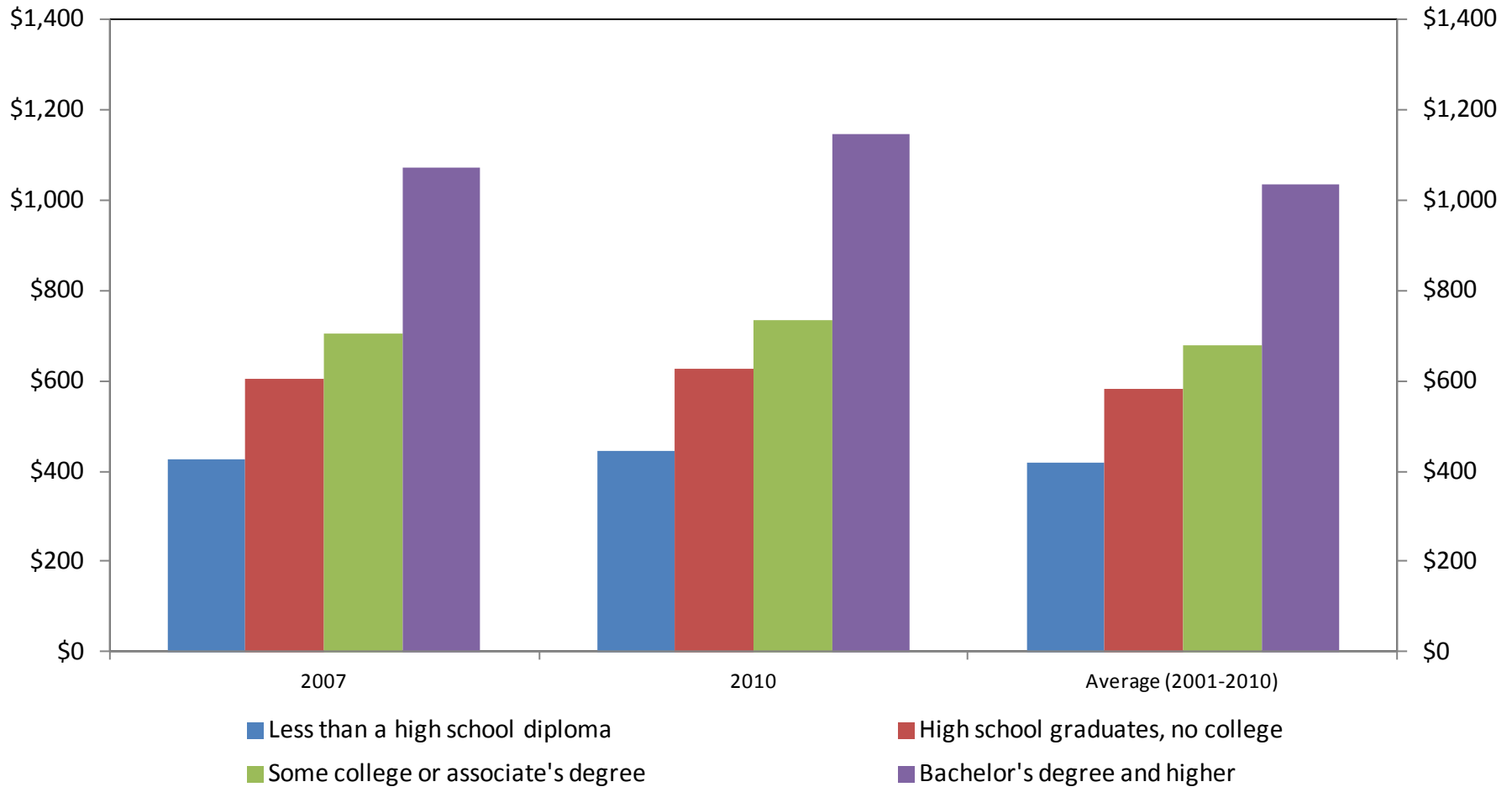


Source: U.S. Bureau of Labor Statistics

Unemployment Rate by Educational Attainment, Kansas City

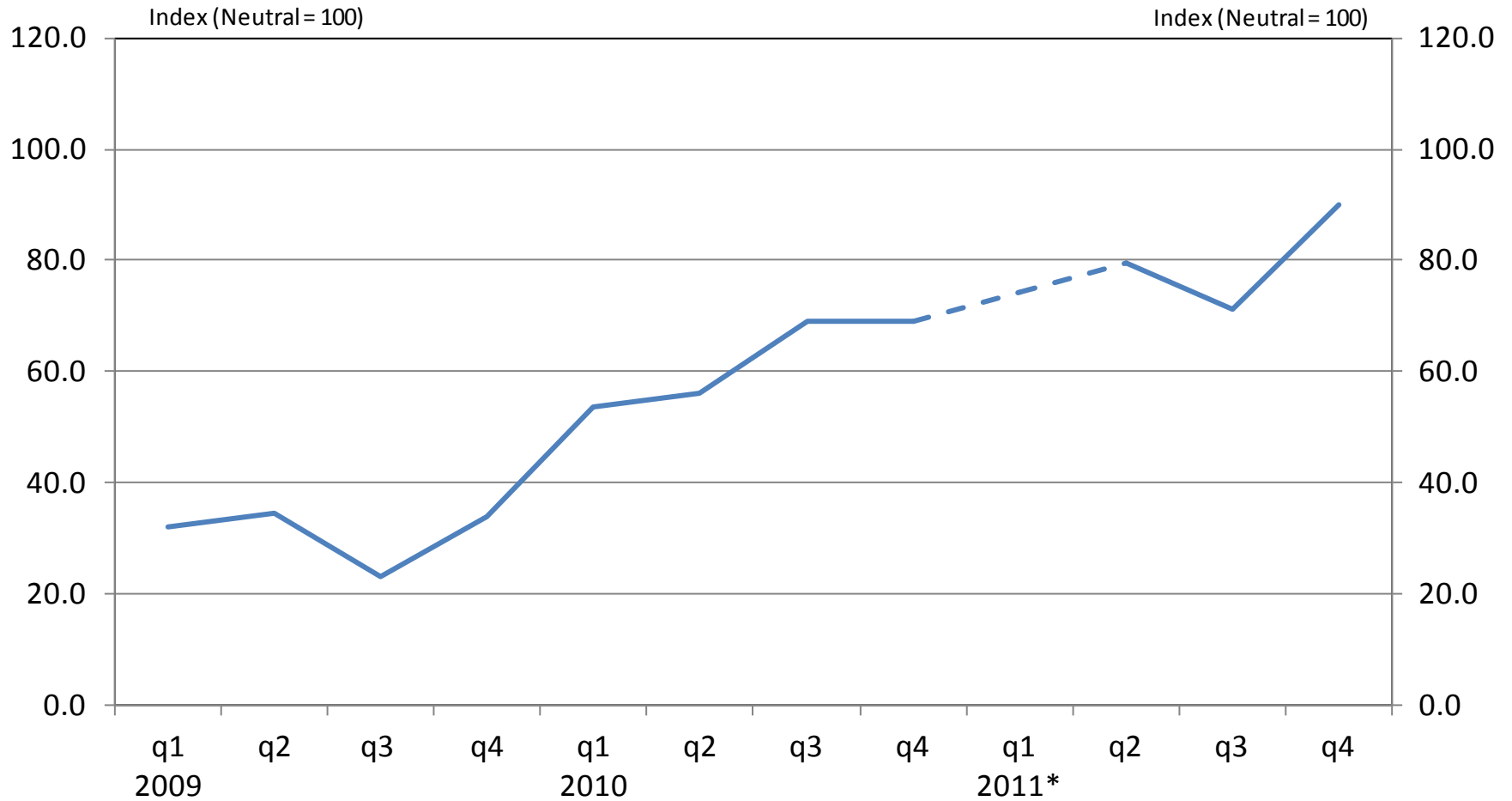


Median Weekly Earnings by Educational Attainment



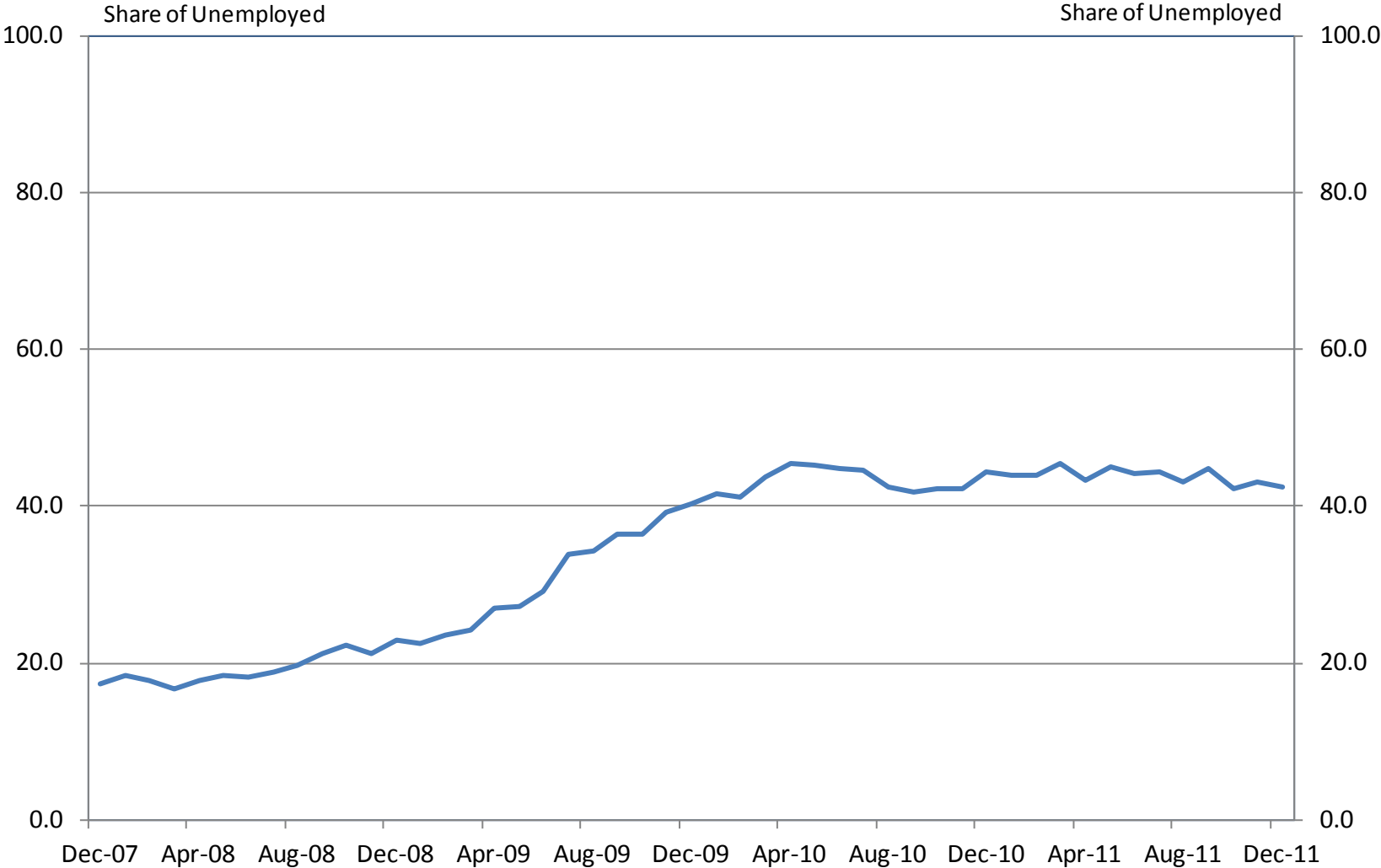
Source: U.S. Bureau of Labor Statistics

LMI Job Availability Index



Source: FRB KC Low- and Moderate-Income Survey

Share of Unemployment that is Long-Term (U.S.)

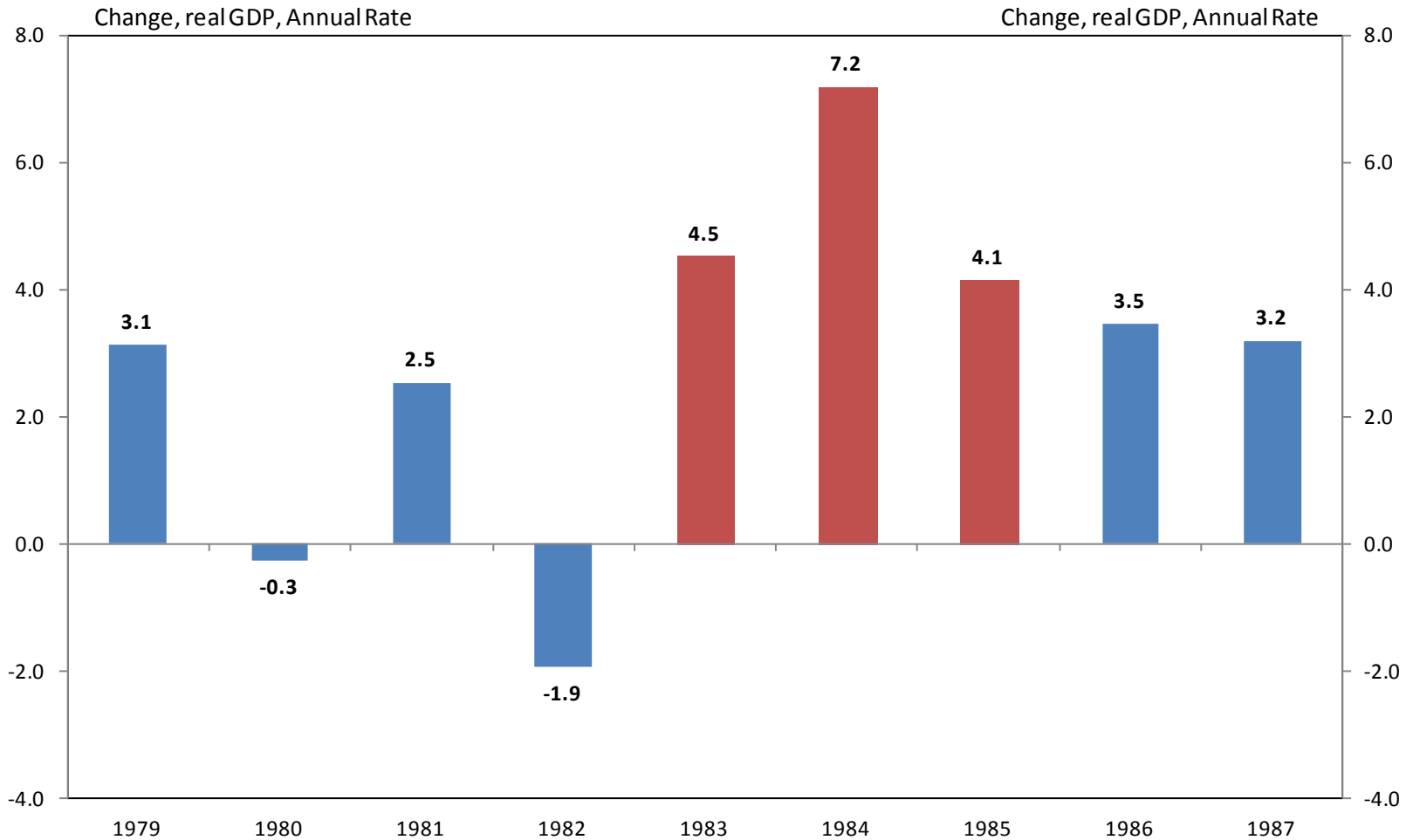


Consensus Forecasts

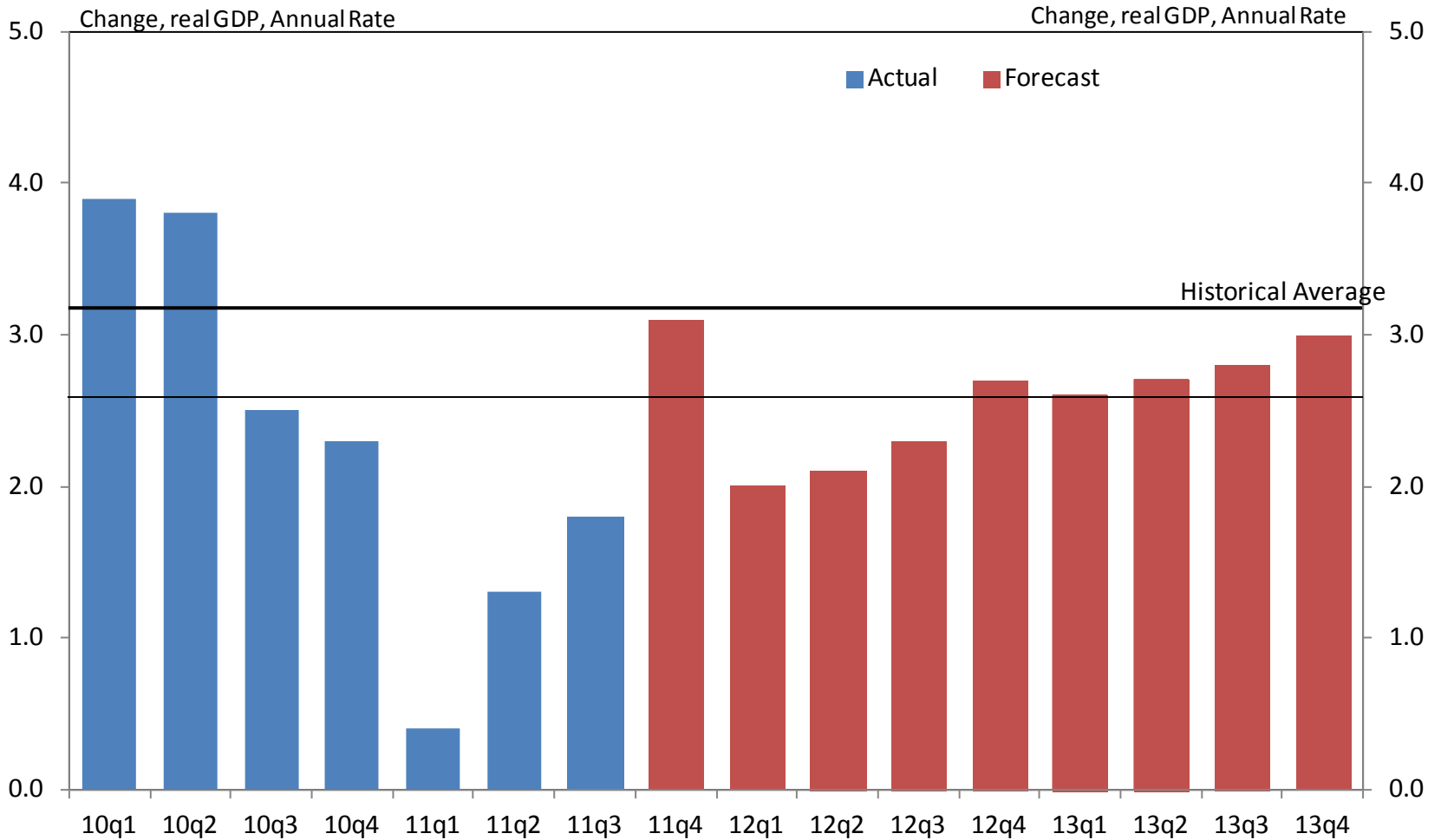
	2010	2011	2012F
Real GDP Growth	3.0	1.7	2.2
Unemployment Rate	9.6	8.9	8.6
Consumer Prices	1.6	3.2*	1.9

Source: Source: Blue Chip Economic Indicators (Jan 2012); Consensus Forecasts (Jan 2012); U.S. Bureau of Labor Statistics
Note: * indicates an estimate

Typical Recession Path

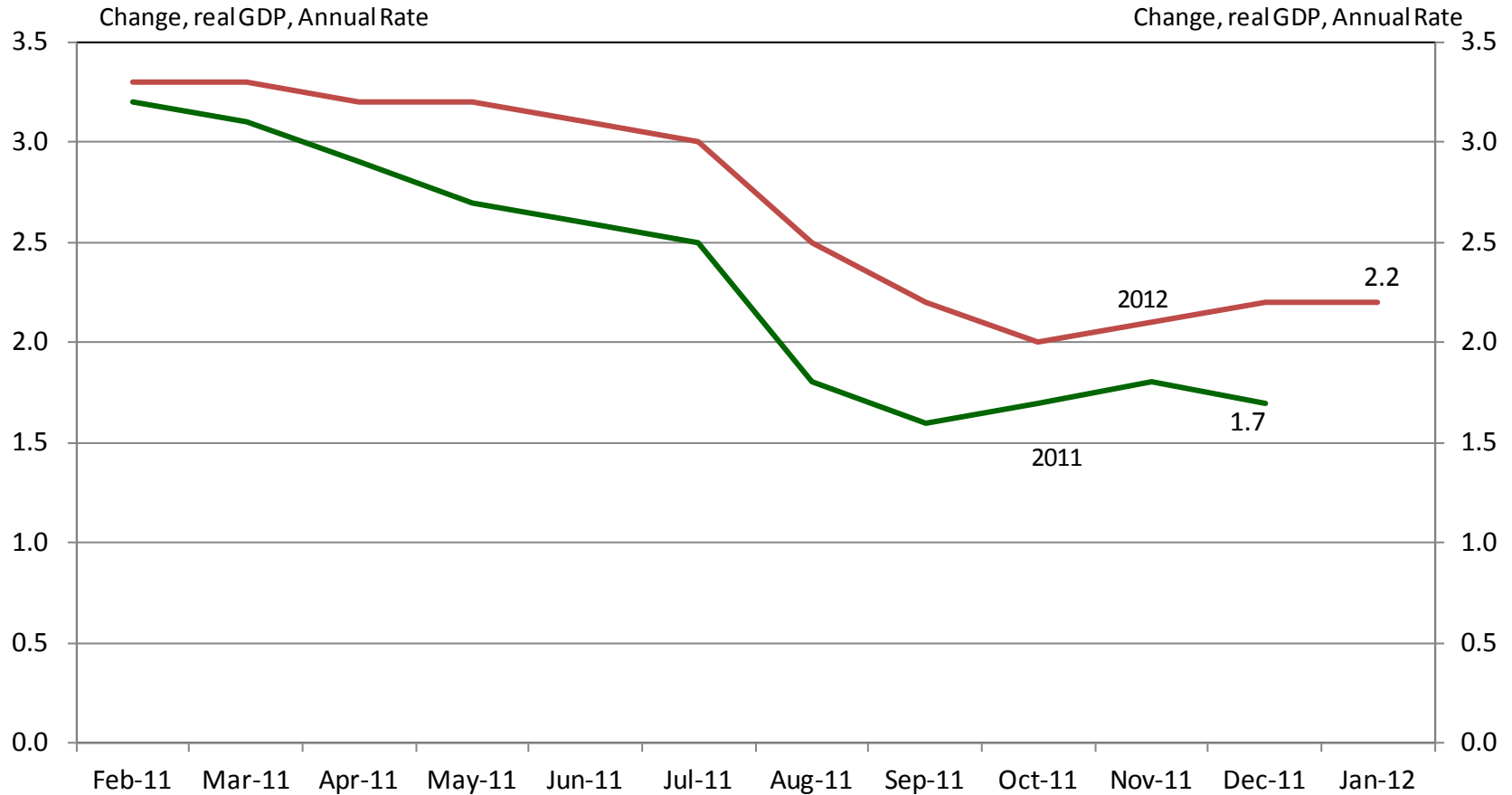


Quarterly GDP Forecasts



Source: Blue Chip Economic Indicators (Jan 2012)

Consensus Forecasts for 2011 and 2012, by month, Jan 2011 – Dec 2011



Source: Blue Chip Economic Indicators (Jan 2012)



FEDERAL RESERVE BANK *of* KANSAS CITY

Contact Information:

Kelly D. Edmiston
Senior Economist
Community Development

1 Memorial Drive
Kansas City, MO 64198
(816) 881-2004
Kelly.edmiston@kc.frb.org