

# Wyoming in the Recession and Recovery

Mark C. Snead  
Branch Executive and Economist  
Denver Branch



2010  
*Regulatory Update*  
SEMINAR  
Federal Reserve Bank of Kansas City

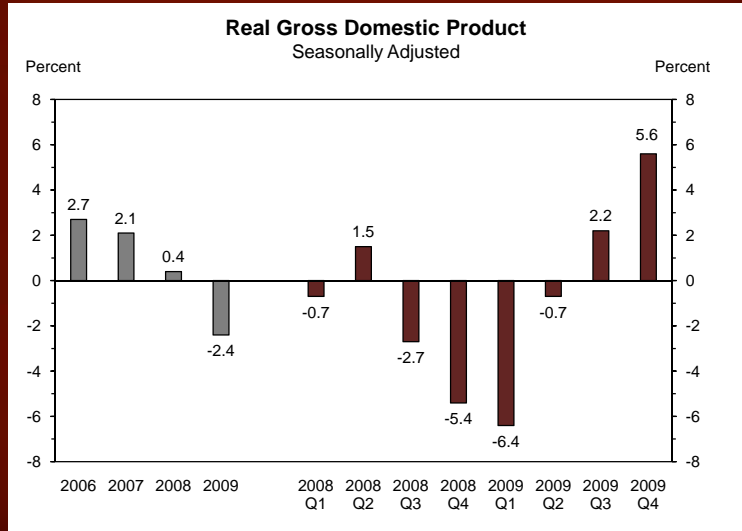
## Recession Reached WY and 10J in 2009

- Recession hit WY and the 10<sup>th</sup> District in 2009
- WY and the District underperformed the U.S. since early 2009
- Near or at the bottom in economic activity in WY based on most economic measures
- Clear improvement in several key areas
- Overhang remains but WY will expand in 2010
- Probably one quarter behind U.S.



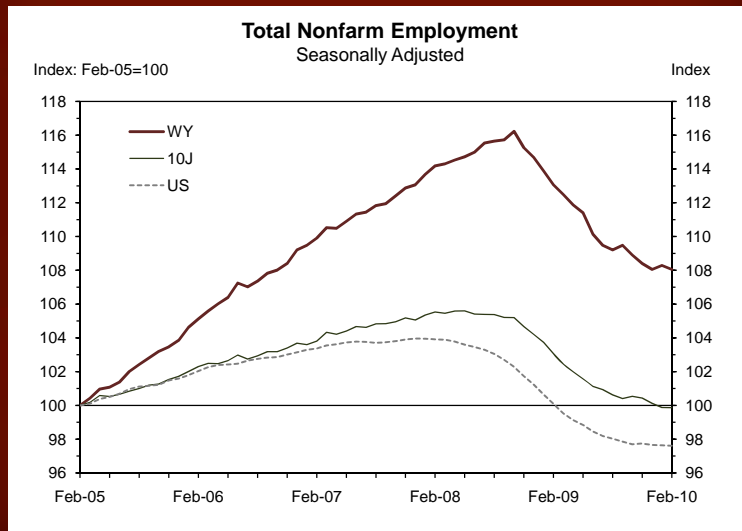
2010 REGULATORY UPDATE SEMINARS  
FEDERAL RESERVE BANK OF KANSAS CITY

## The Technical Recession is Over

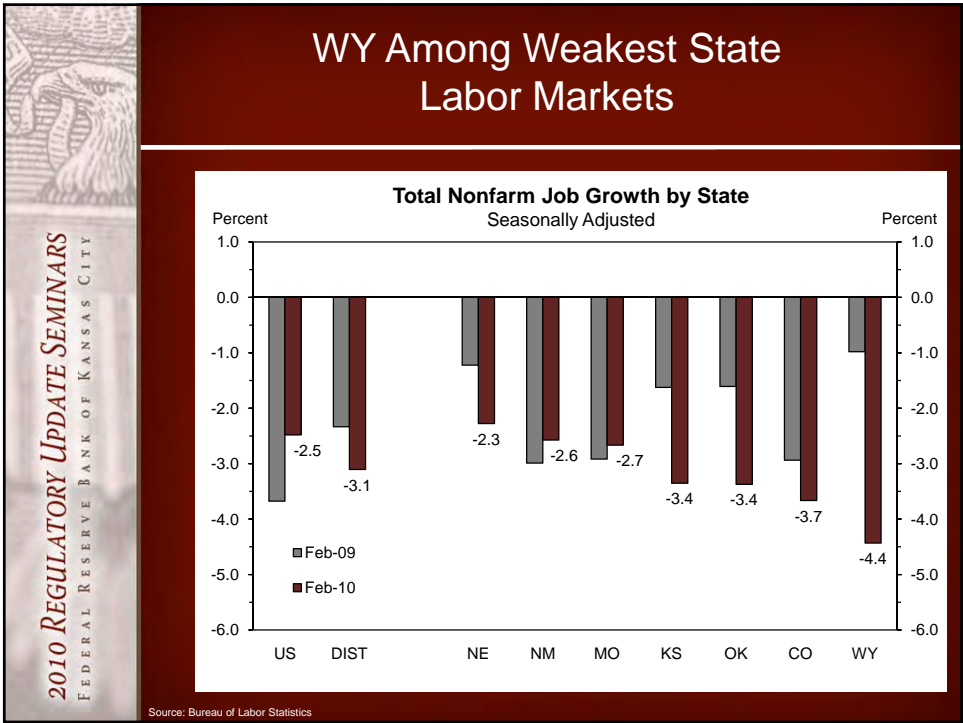
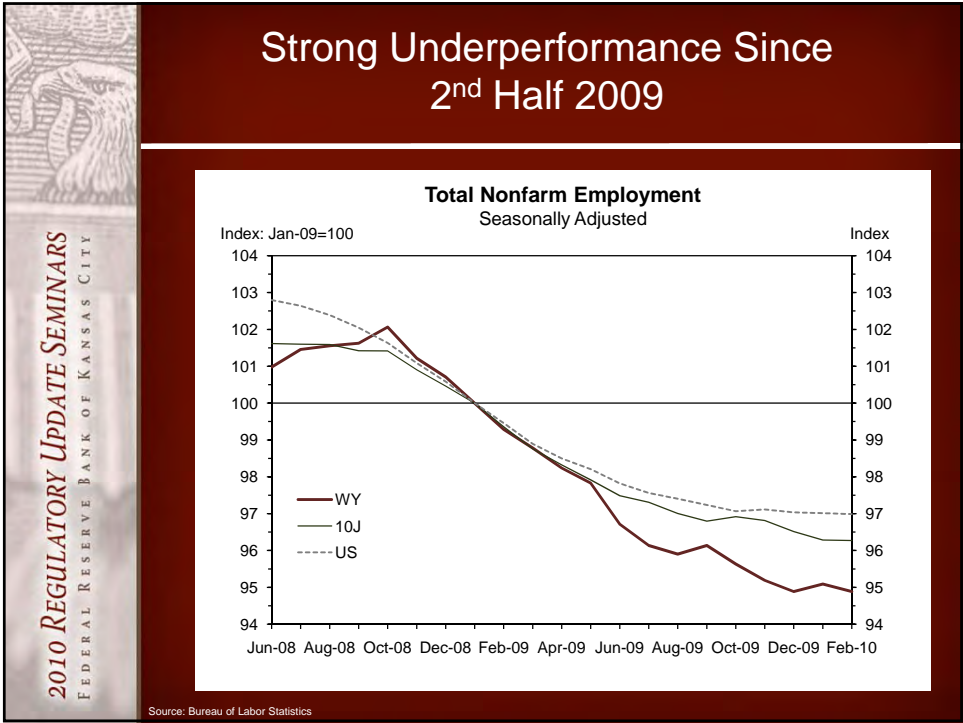


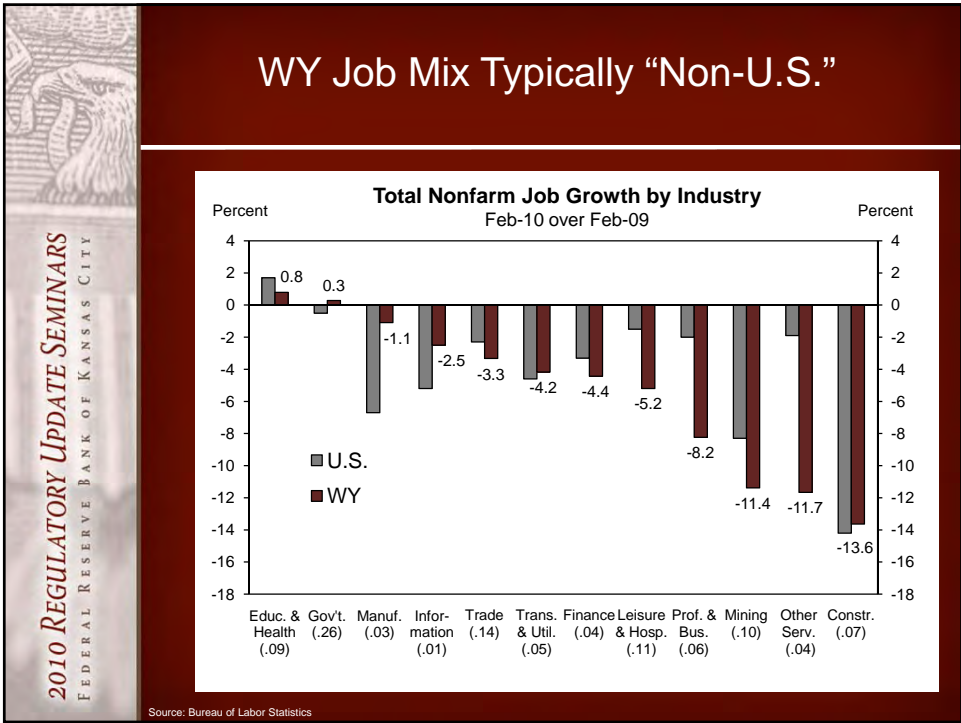
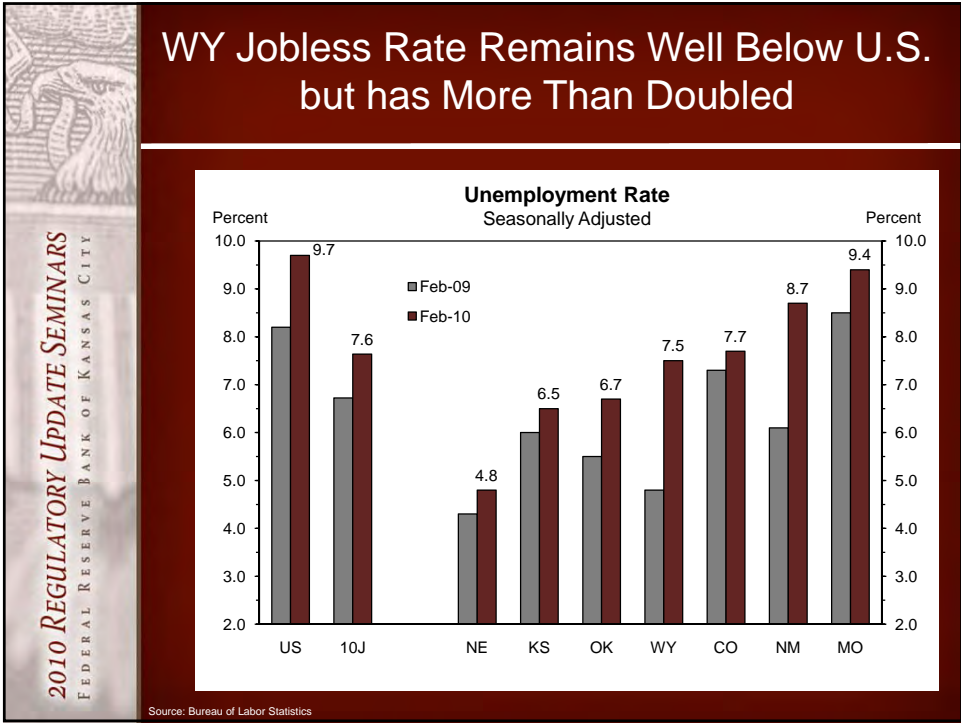
Source: Bureau of Economic Analysis

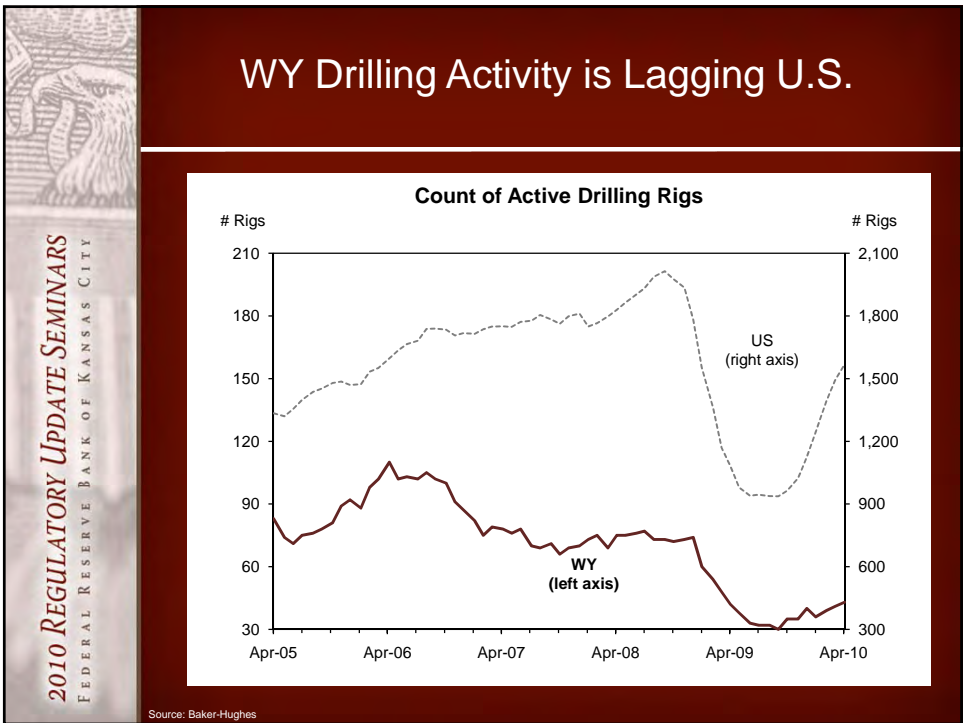
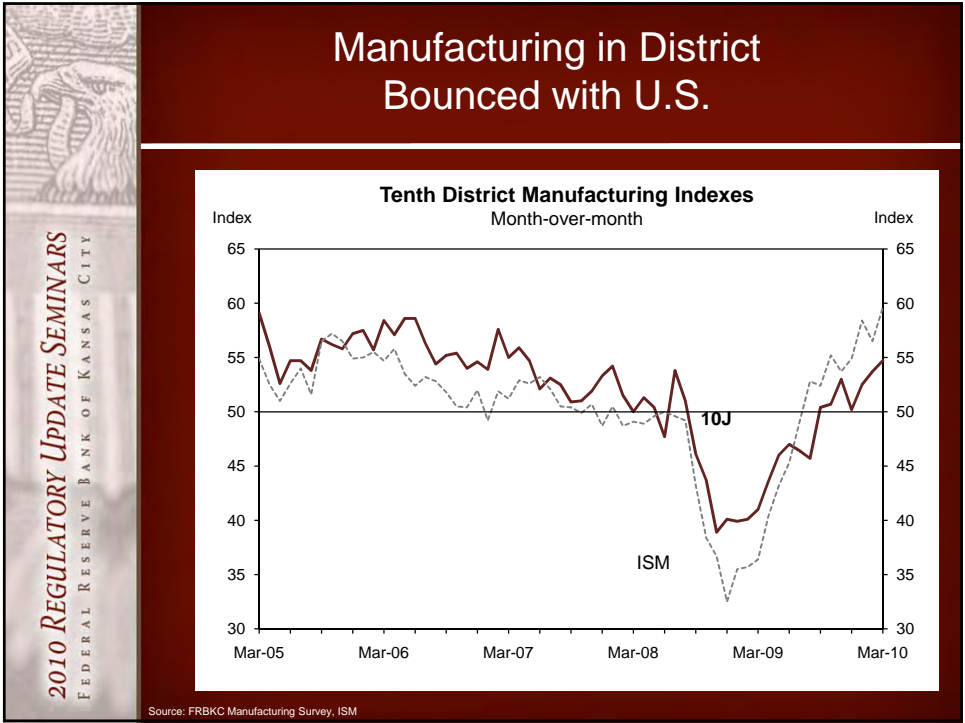
## WY Shifted From Outperform to Underperform

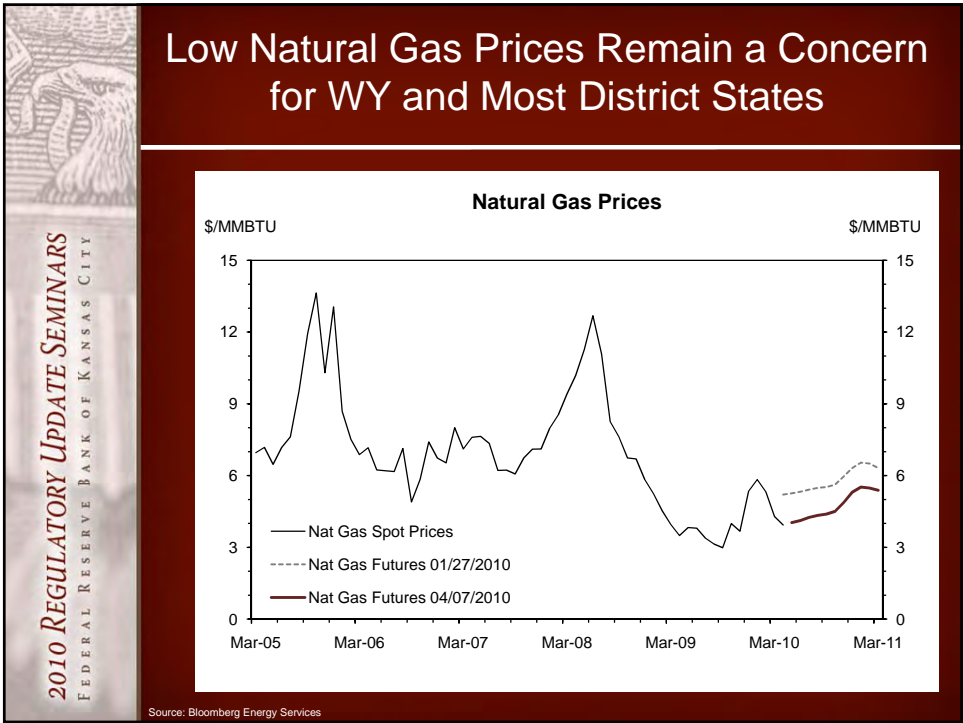
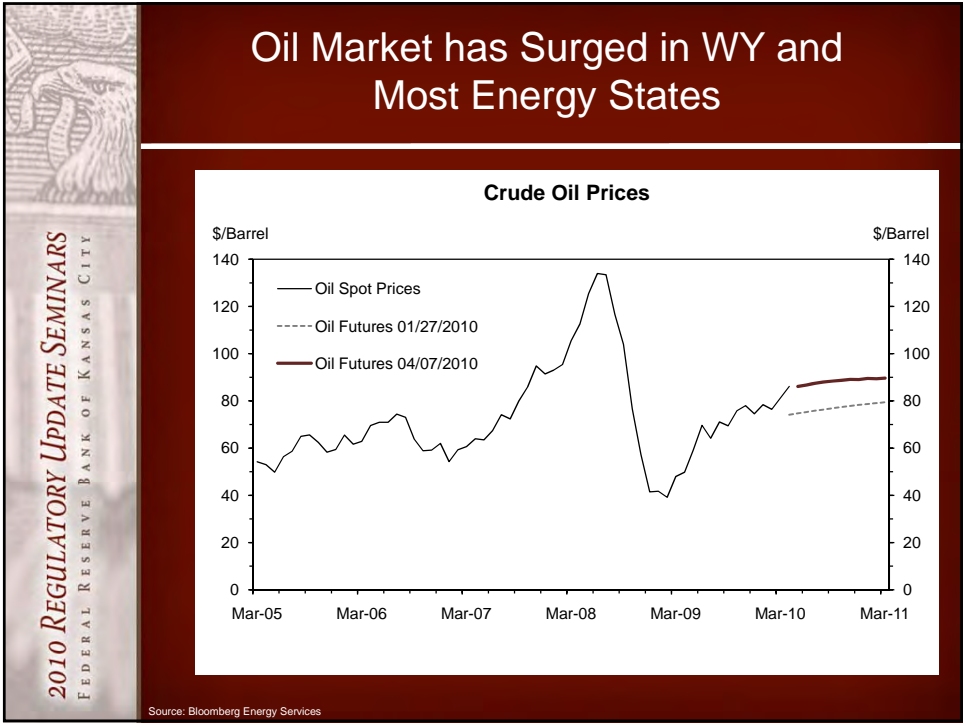


Source: Bureau of Labor Statistics





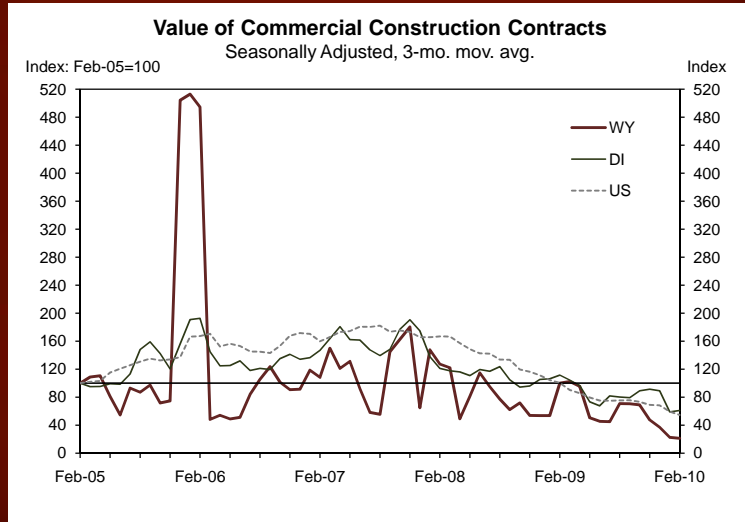




2010 REGULATORY UPDATE SEMINARS  
 FEDERAL RESERVE BANK OF KANSAS CITY

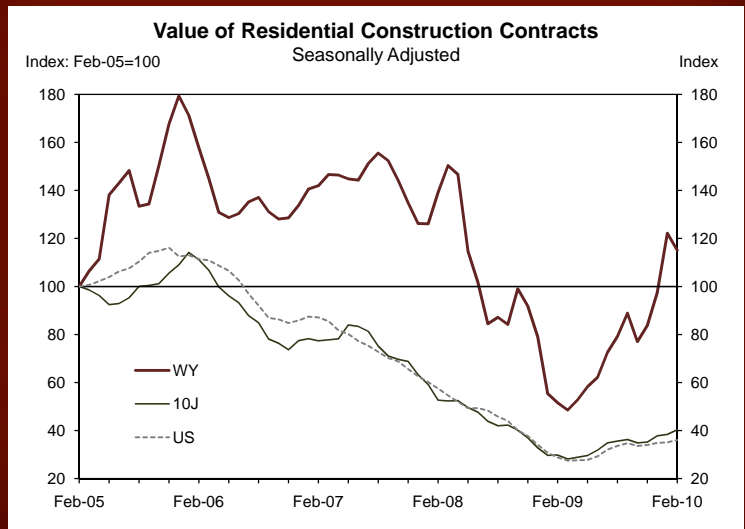
2010 REGULATORY UPDATE SEMINARS  
 FEDERAL RESERVE BANK OF KANSAS CITY

## Commercial Construction Activity Slowed Considerably in 2010...

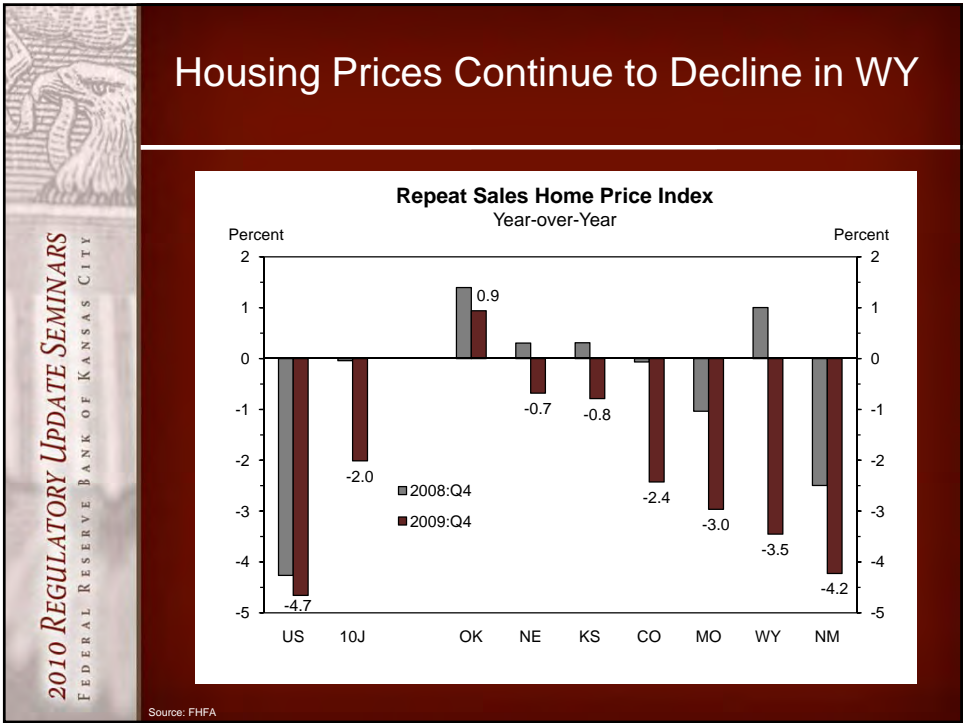
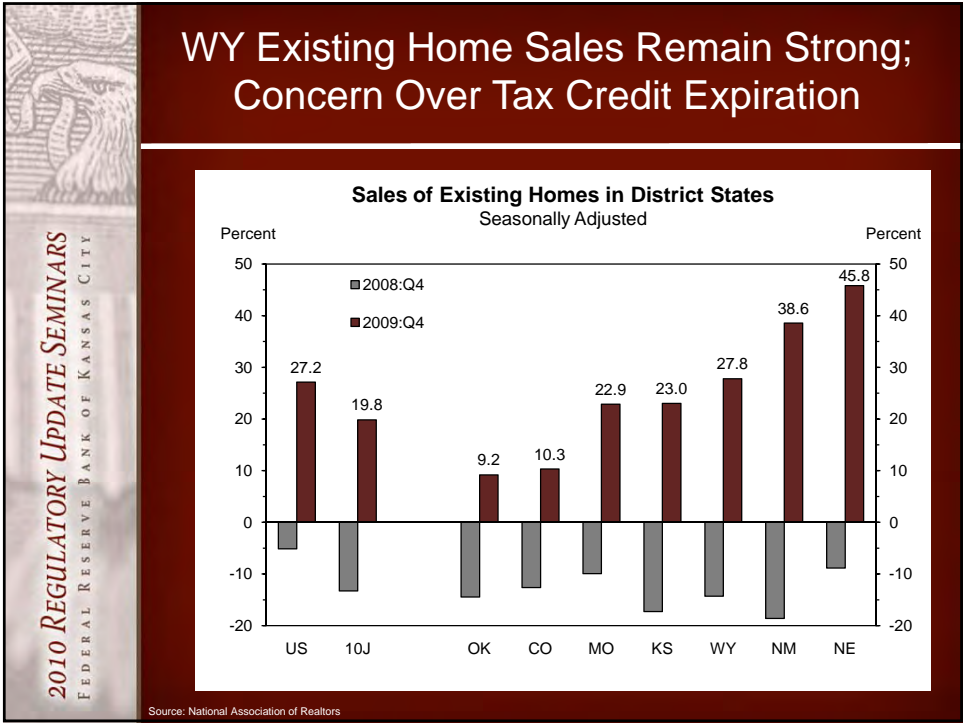


Source: F.W. Dodge, Inc.

## ... but WY Residential Construction has far Outpaced U.S. Activity



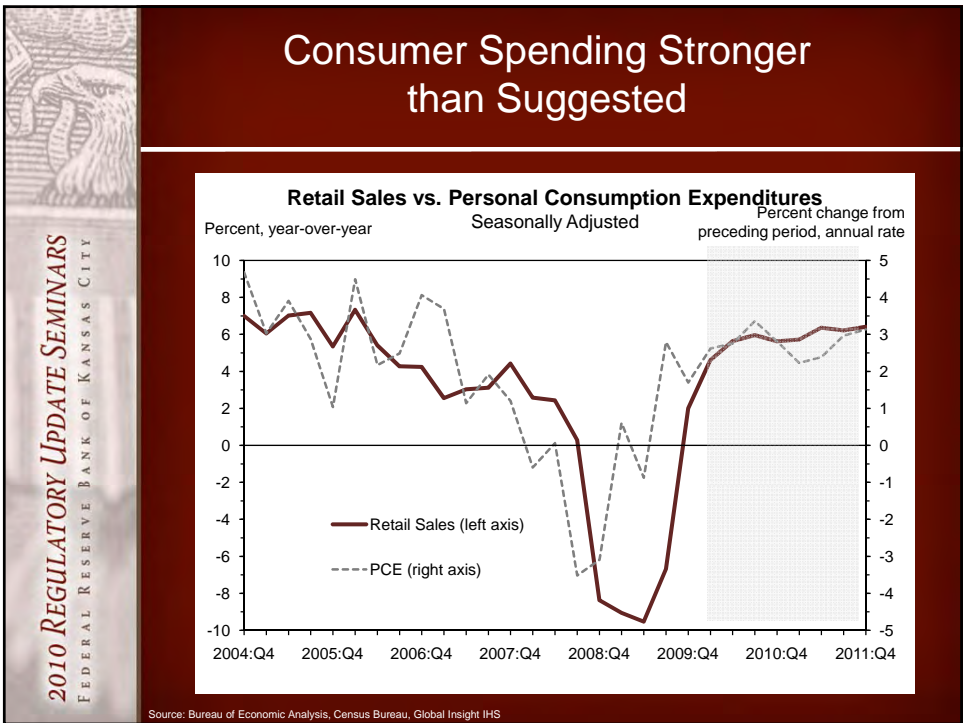
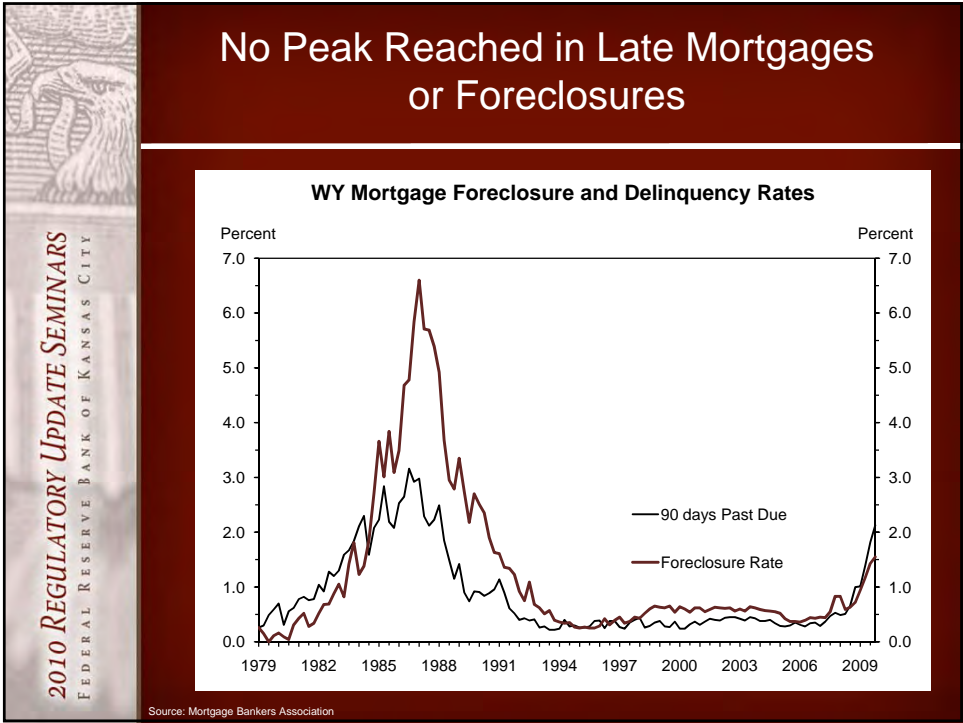
Source: F.W. Dodge, Inc.



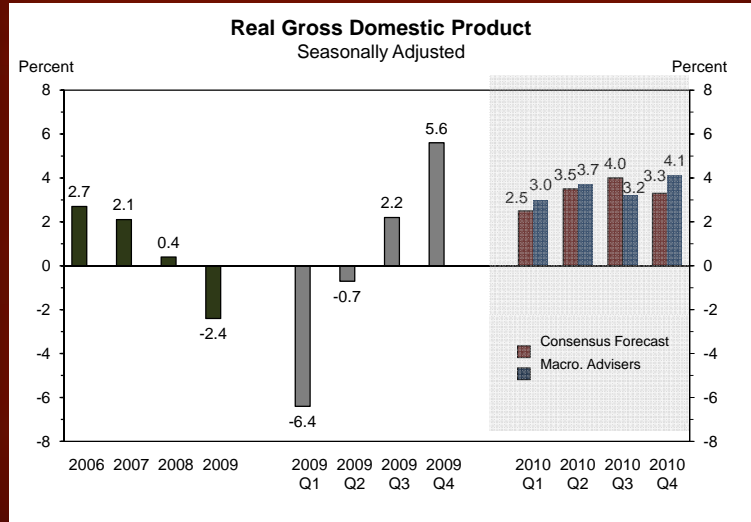
2010 REGULATORY UPDATE SEMINARS  
FEDERAL RESERVE BANK OF KANSAS CITY

2010 REGULATORY UPDATE SEMINARS  
FEDERAL RESERVE BANK OF KANSAS CITY

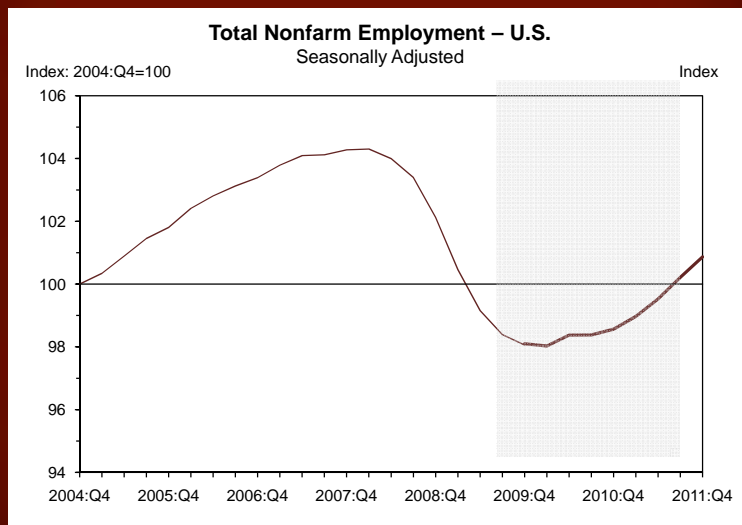





## Forecast for 3.0-3.5% GDP Growth in 2010



## At or Near a Bottom in Labor Market






2010 REGULATORY UPDATE SEMINARS  
FEDERAL RESERVE BANK OF KANSAS CITY

## Wyoming Recession and Recovery

- Technical recession ended around Q3 2009
- Improvement in most major areas
- Likely at or near the turning point for most economic indicators
- Job growth expected by Q2 2010
- WY may lag one quarter in recovery



2010 REGULATORY UPDATE SEMINARS  
FEDERAL RESERVE BANK OF KANSAS CITY

## Wyoming Recession and Recovery

Questions?