

# U.S. & Colorado Economic Conditions

---

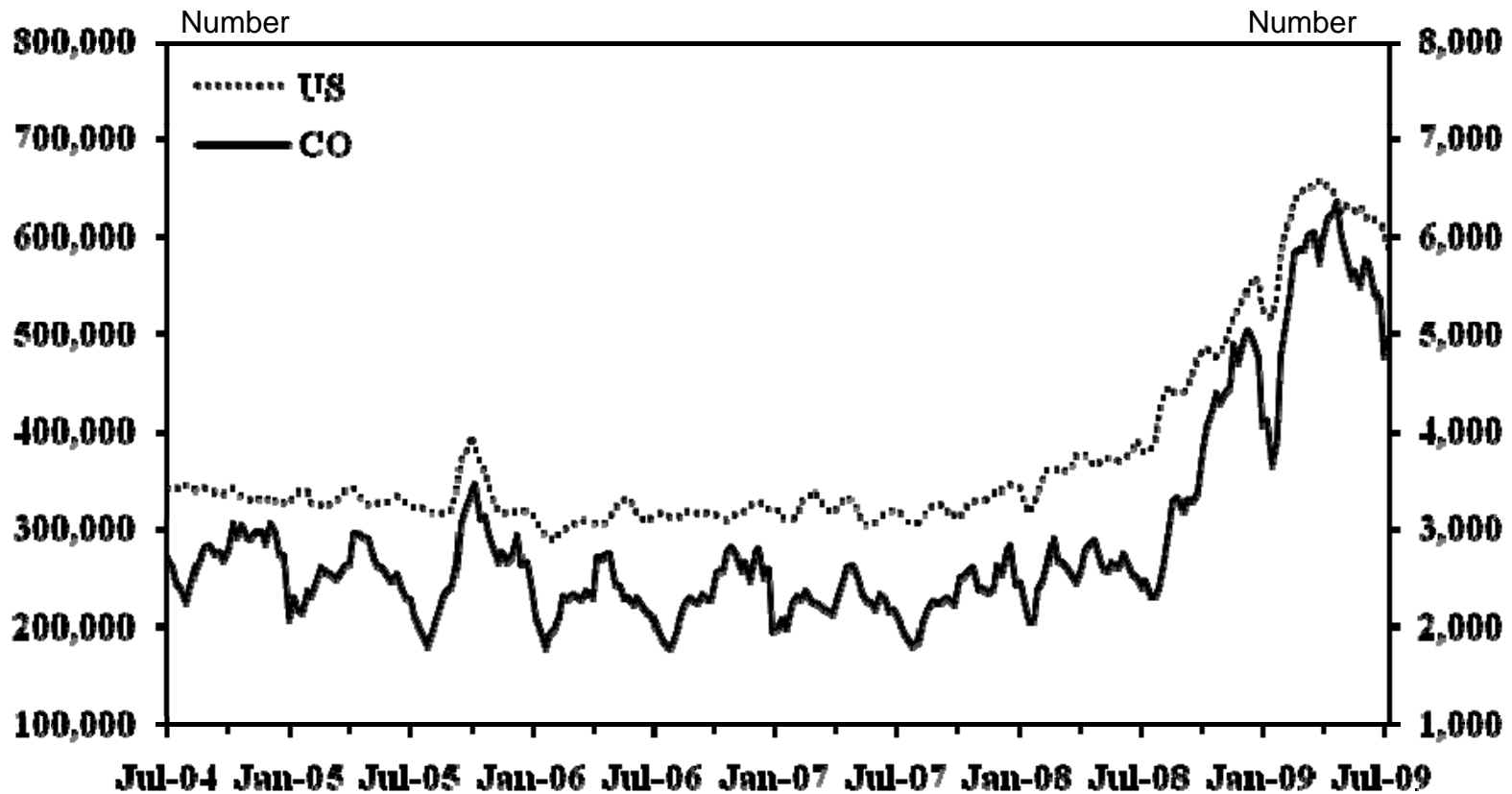


**Mark C. Snead**

**Assistant Vice President and Branch Executive  
Federal Reserve Bank of Kansas City  
Denver Branch**

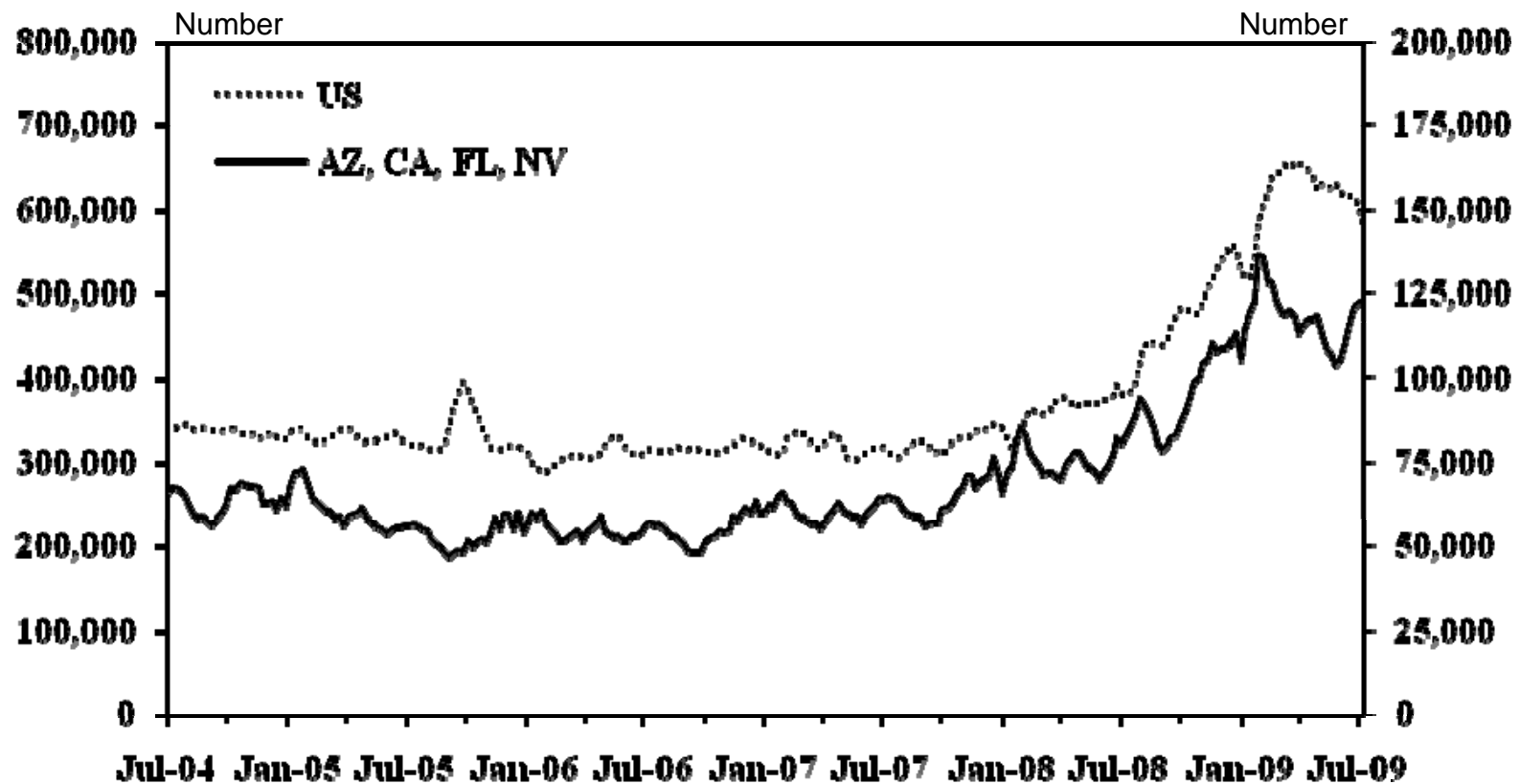
# Peak in CO Jobless Claims Mirrors U.S.

**Initial Unemployment Claims**  
Seasonally Adjusted, 4-wk. mov. avg.



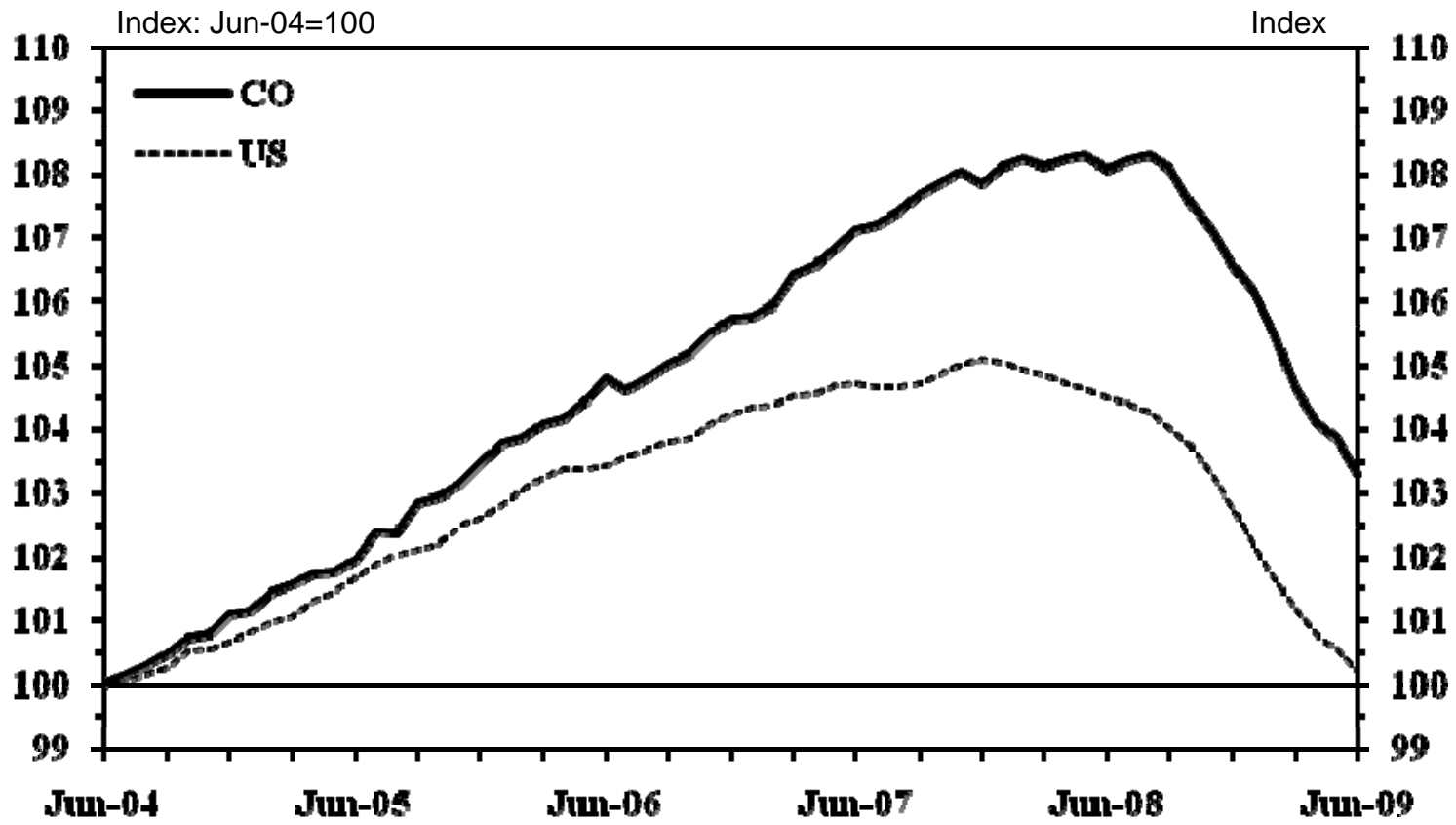
# Jobless Claims in Housing-Bust States Improving (except CA)

**Initial Unemployment Claims**  
Seasonally Adjusted, 4-wk. mov. avg.



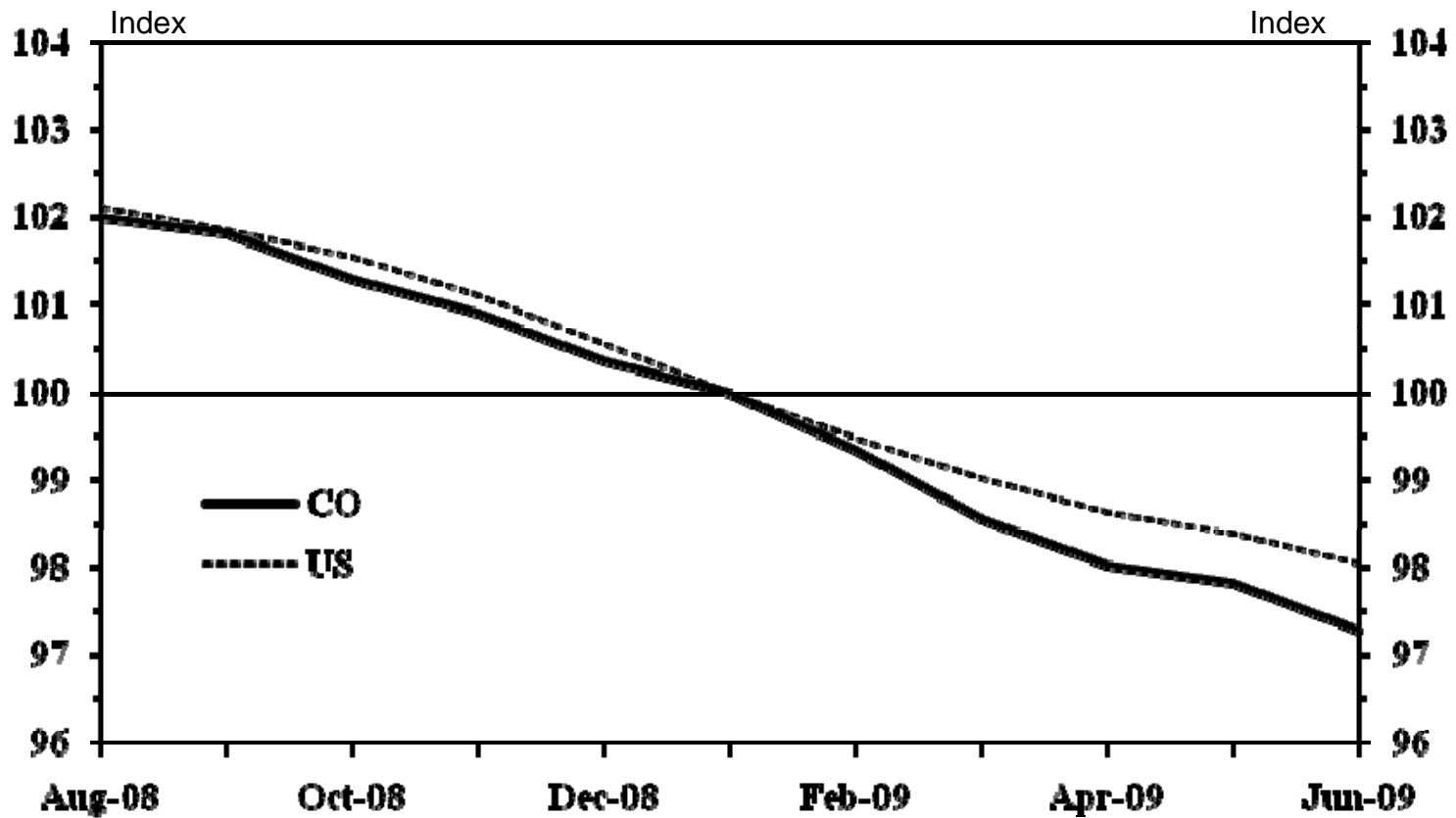
# CO Has Outperformed U.S. Over Cycle....

Level of Total Nonfarm Employment  
Seasonally Adjusted



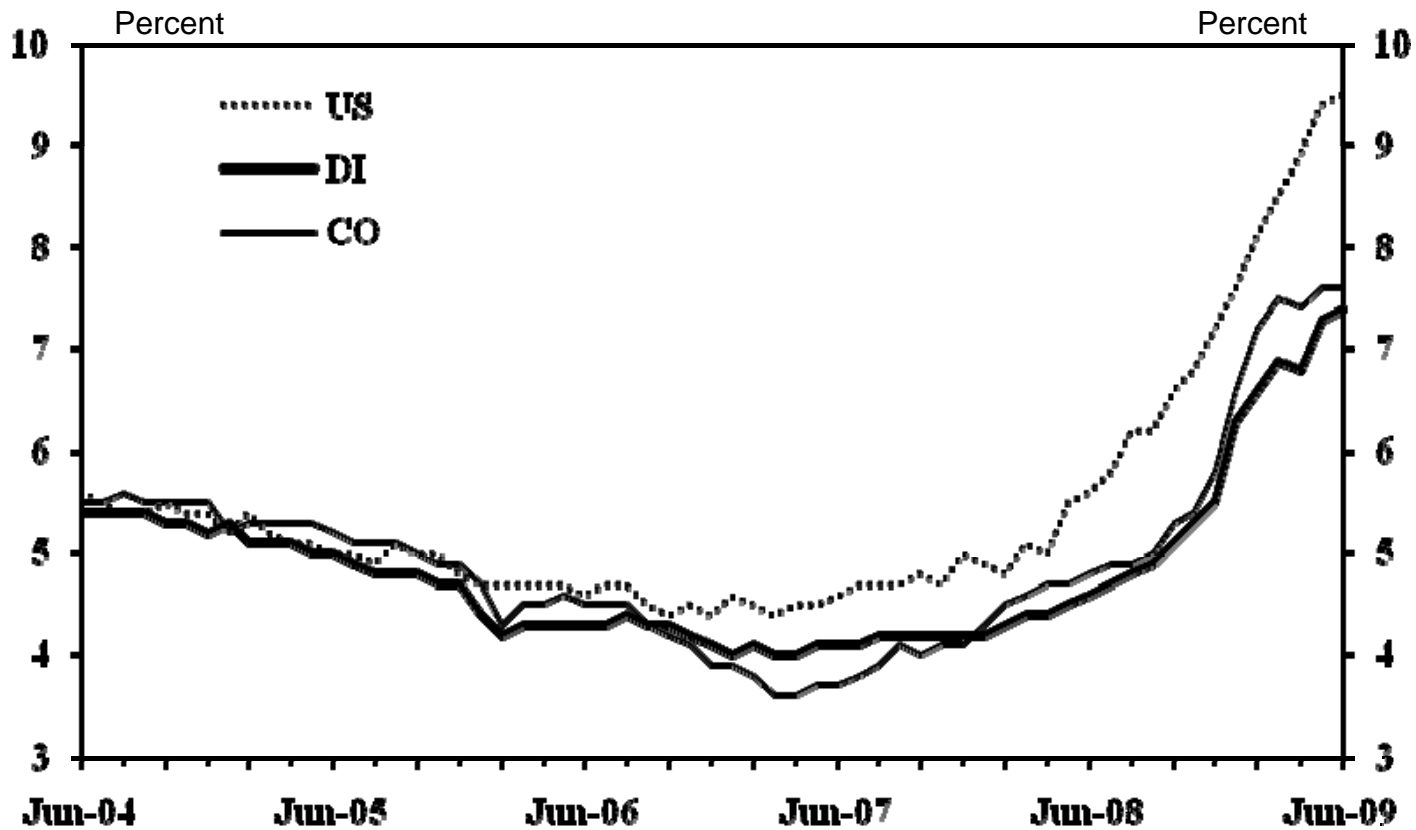
... but is underperforming U.S. in 2009

**Total Nonfarm Employment**  
Seasonally Adjusted



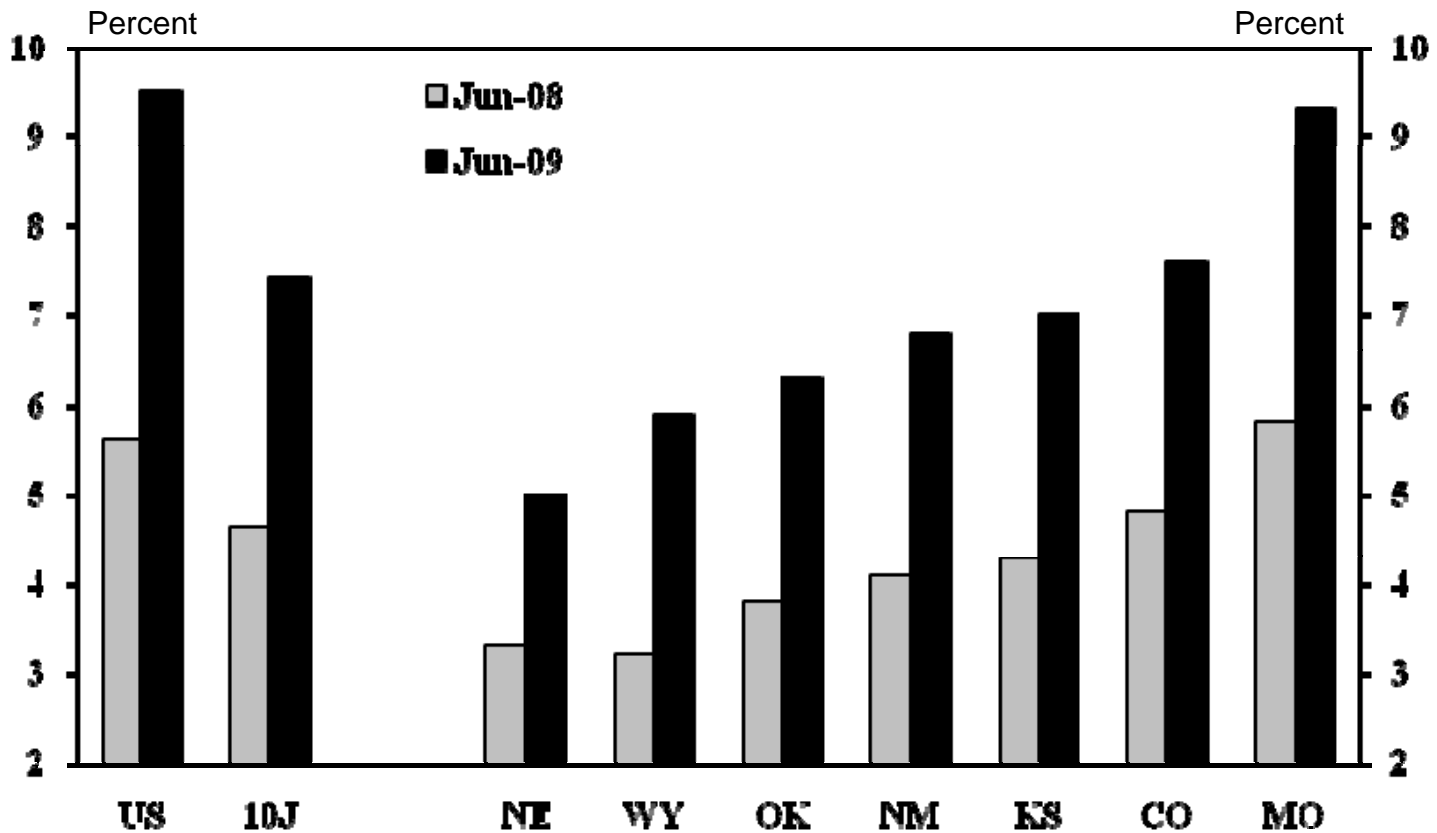
# Jobless Rate in CO and District Remains Below U.S.

**Unemployment Rate**  
Seasonally Adjusted



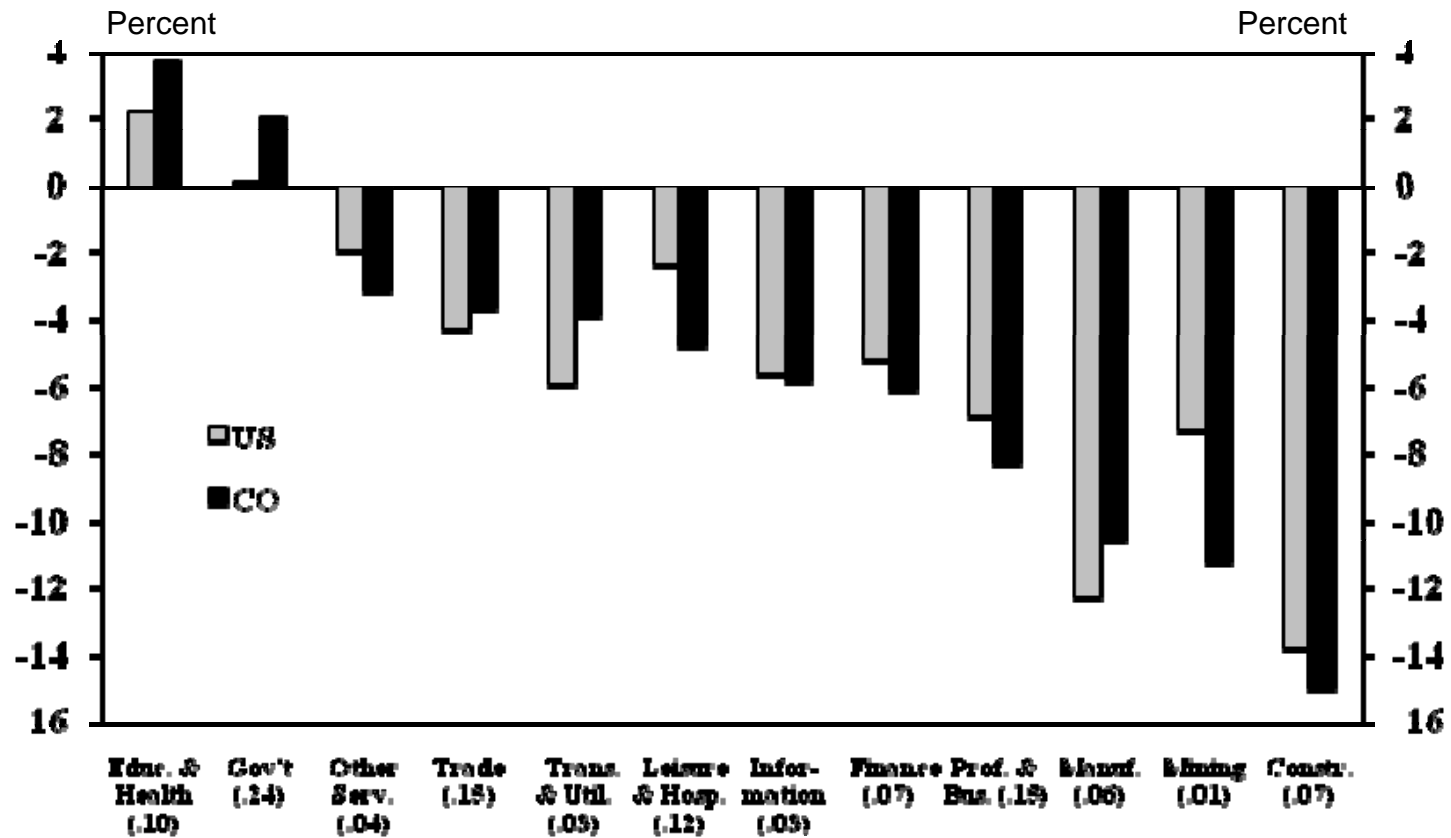
# Other District States See Similar Increase in Jobless Rate

Unemployment Rate  
Seasonally Adjusted



# Mining is Weighing on CO; Govt. and Health Care Providing Boost

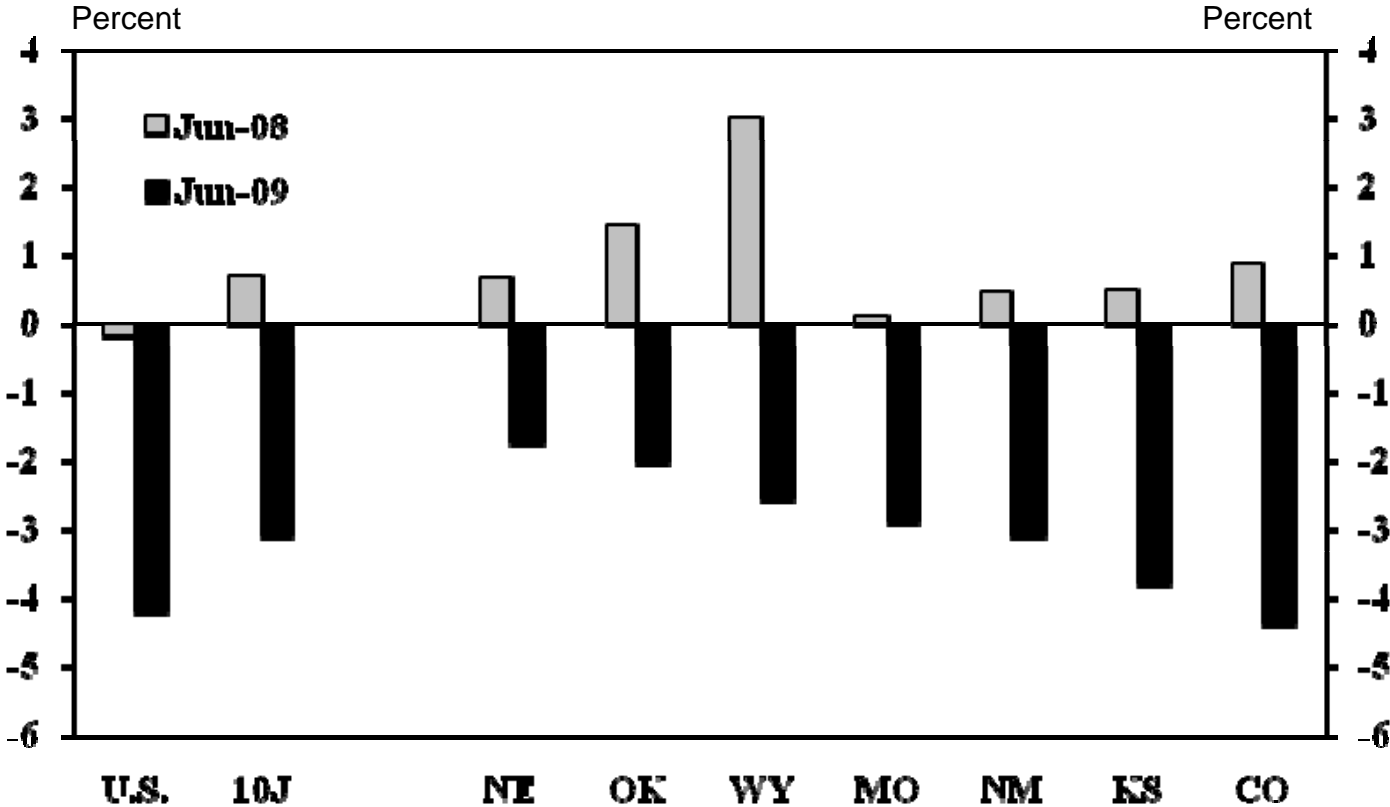
**Nonfarm Job Growth by Industry**  
Jun-09 over Jun-08





# CO Looks Most National-Like Among District States

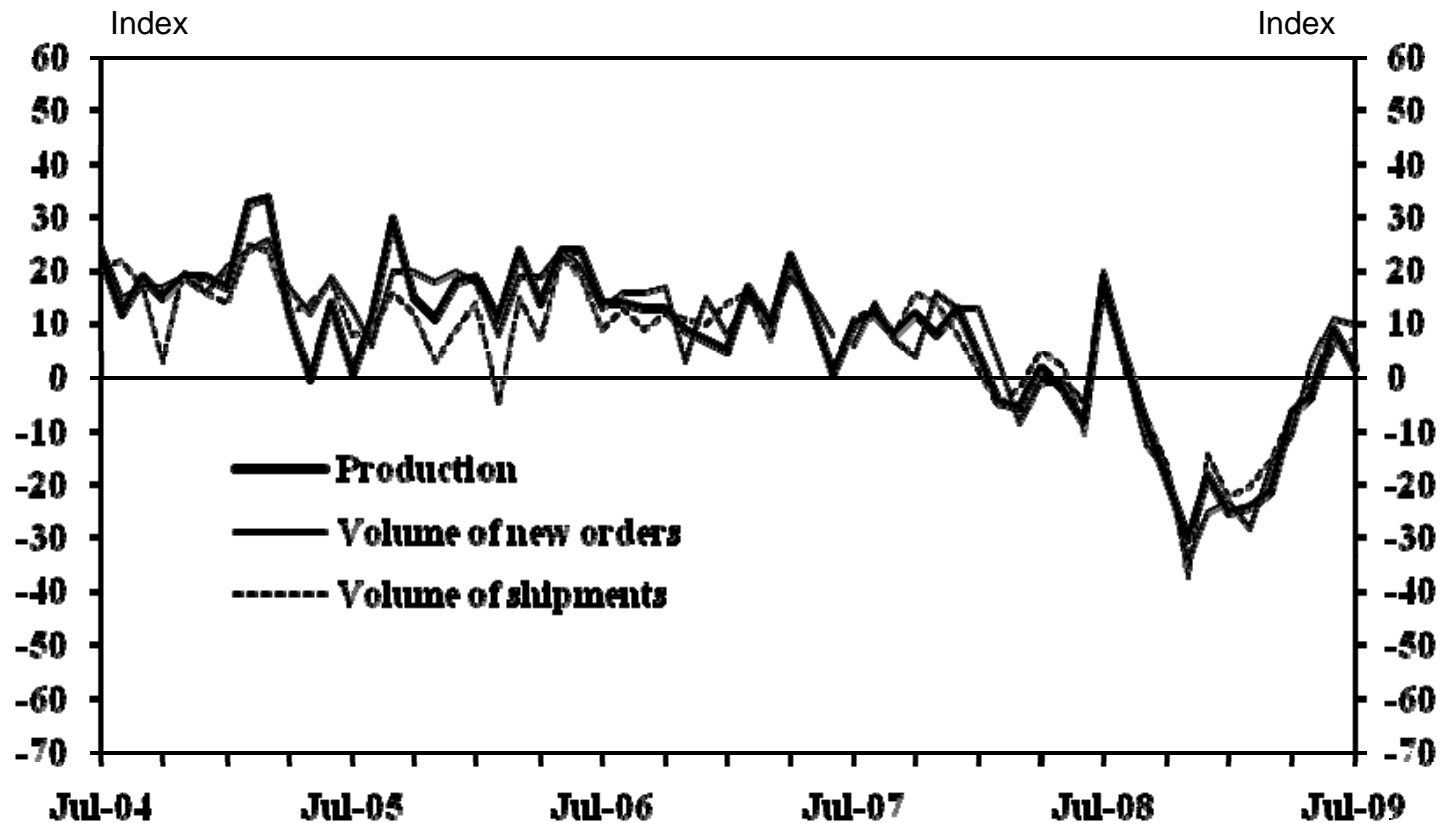
Nonfarm Job Growth by State  
Year-over-year



Source: Bureau of Labor Statistics

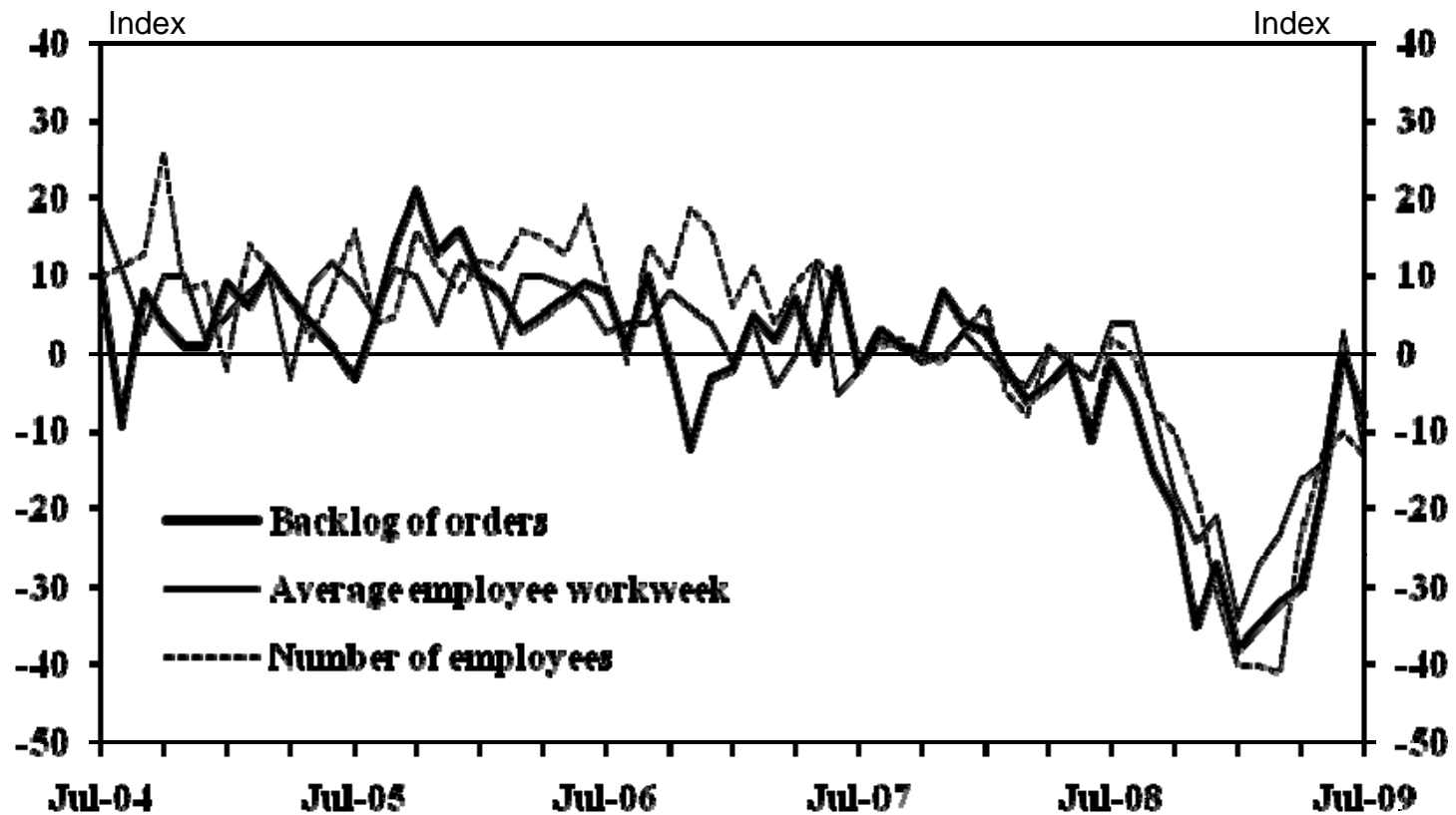
# Manufacturing Output is Finally Expanding in District

Tenth District Manufacturing Indexes  
Month-over-month



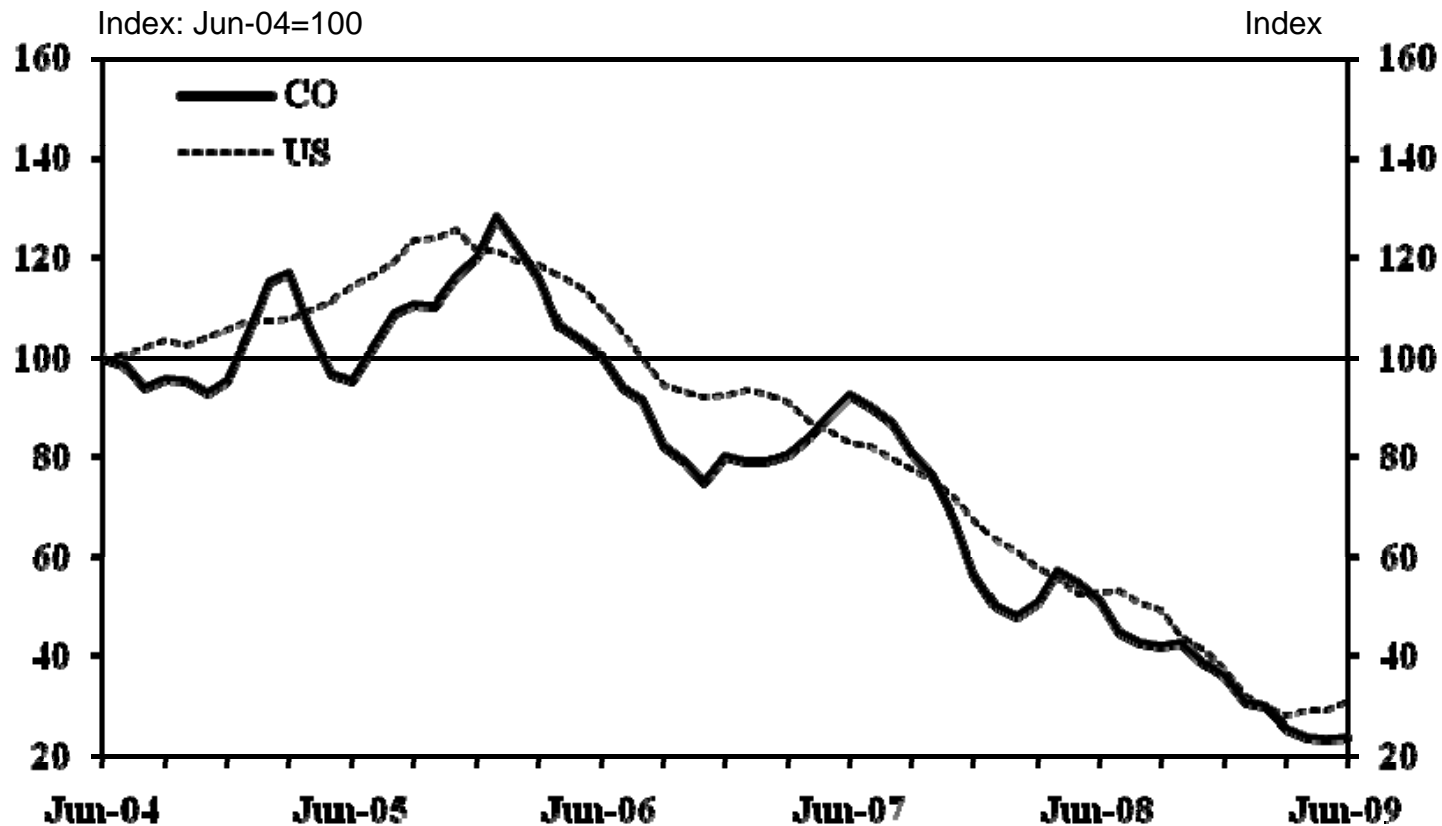
# Backlogs, Workweek, and Employment are also Improving

Tenth District Manufacturing Indexes  
Month-over-month



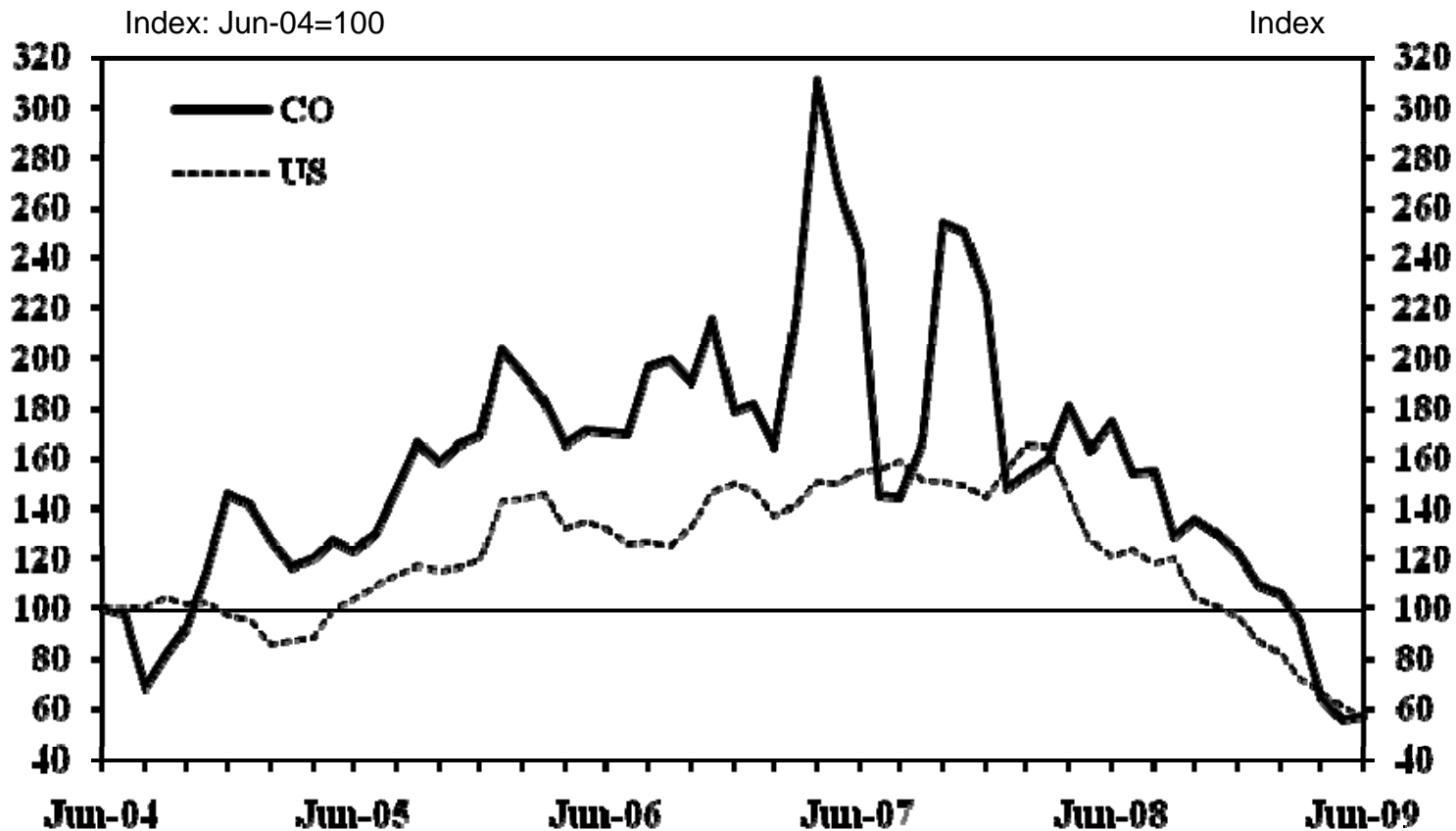
# CO Residential Construction Has Matched National Decline

**Value of Residential Construction Contracts**  
Seasonally Adjusted, 3-mo. mov. avg.



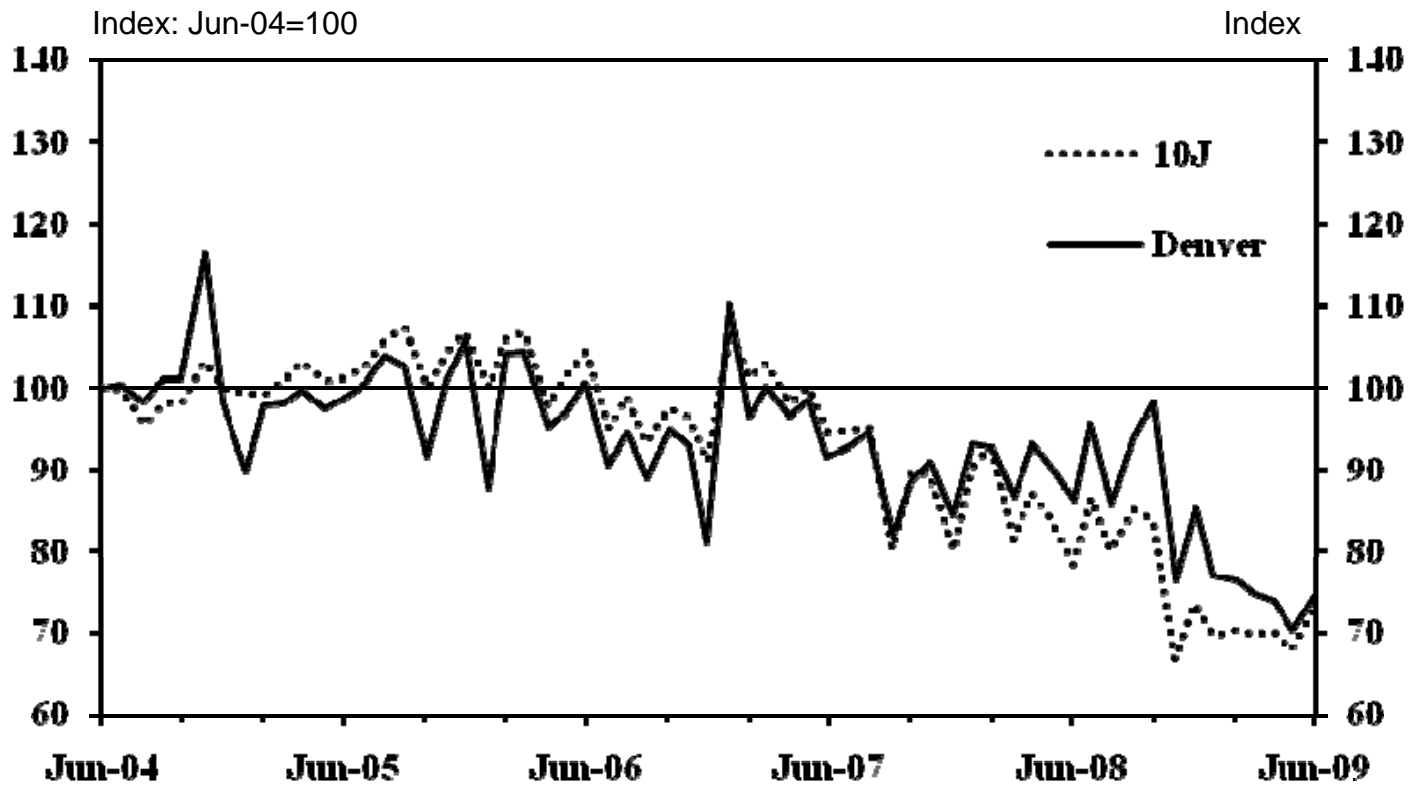
# CO Commercial Construction Suffered Much Larger Relative Decline

**Value of Commercial Construction Contracts**  
Seasonally Adjusted, 3-mo. mov. avg.



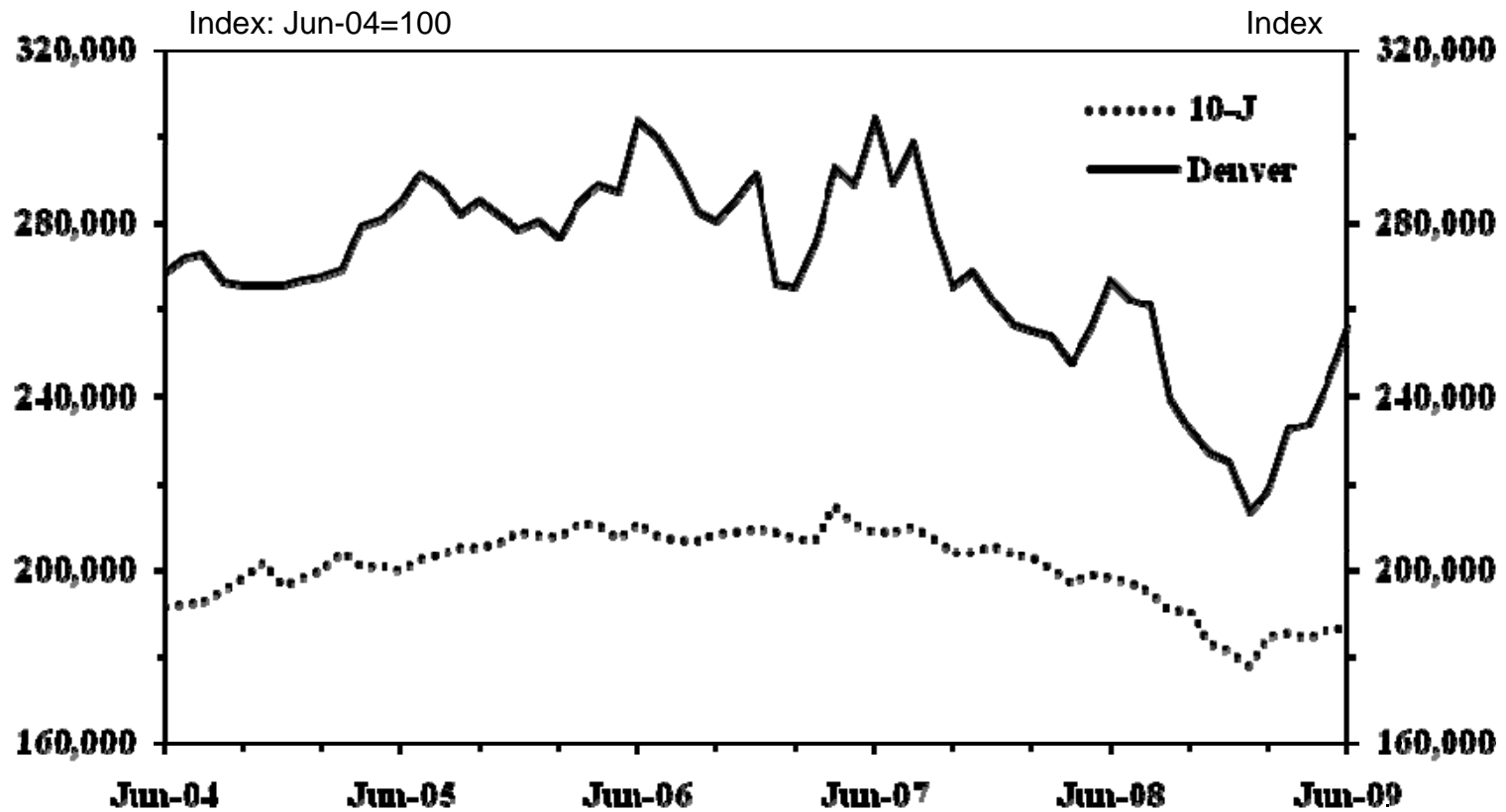
# Bottom in CO Existing Home Sales?

**Sales of Existing Homes in Major Metro Areas**  
Seasonally Adjusted



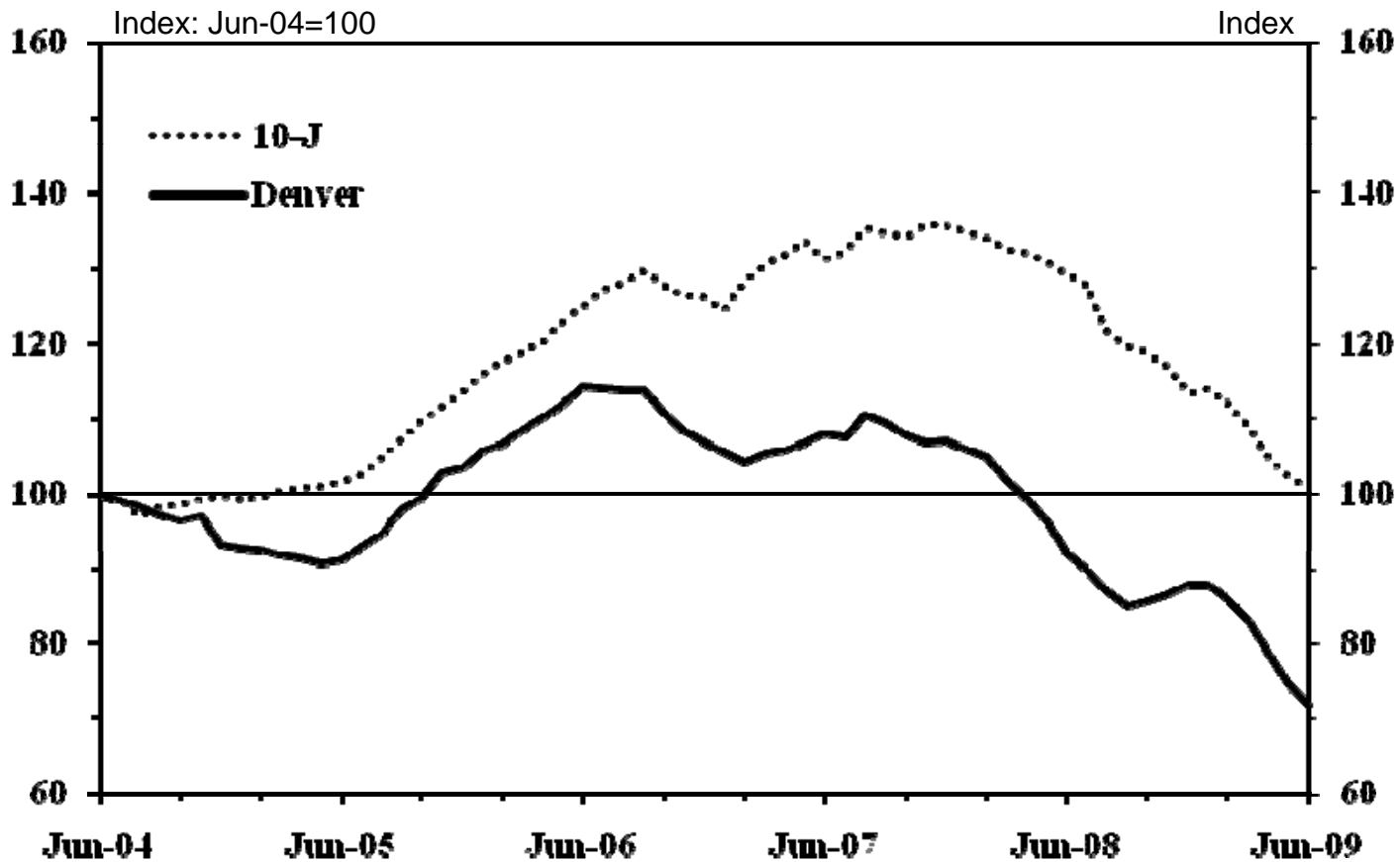
# Existing Home Prices Have Made a Clear Bottom

**Average Price of Sold Homes in Major Metro Areas**  
Seasonally Adjusted



# Correction in Inventory Supports a Bottom in Existing Housing

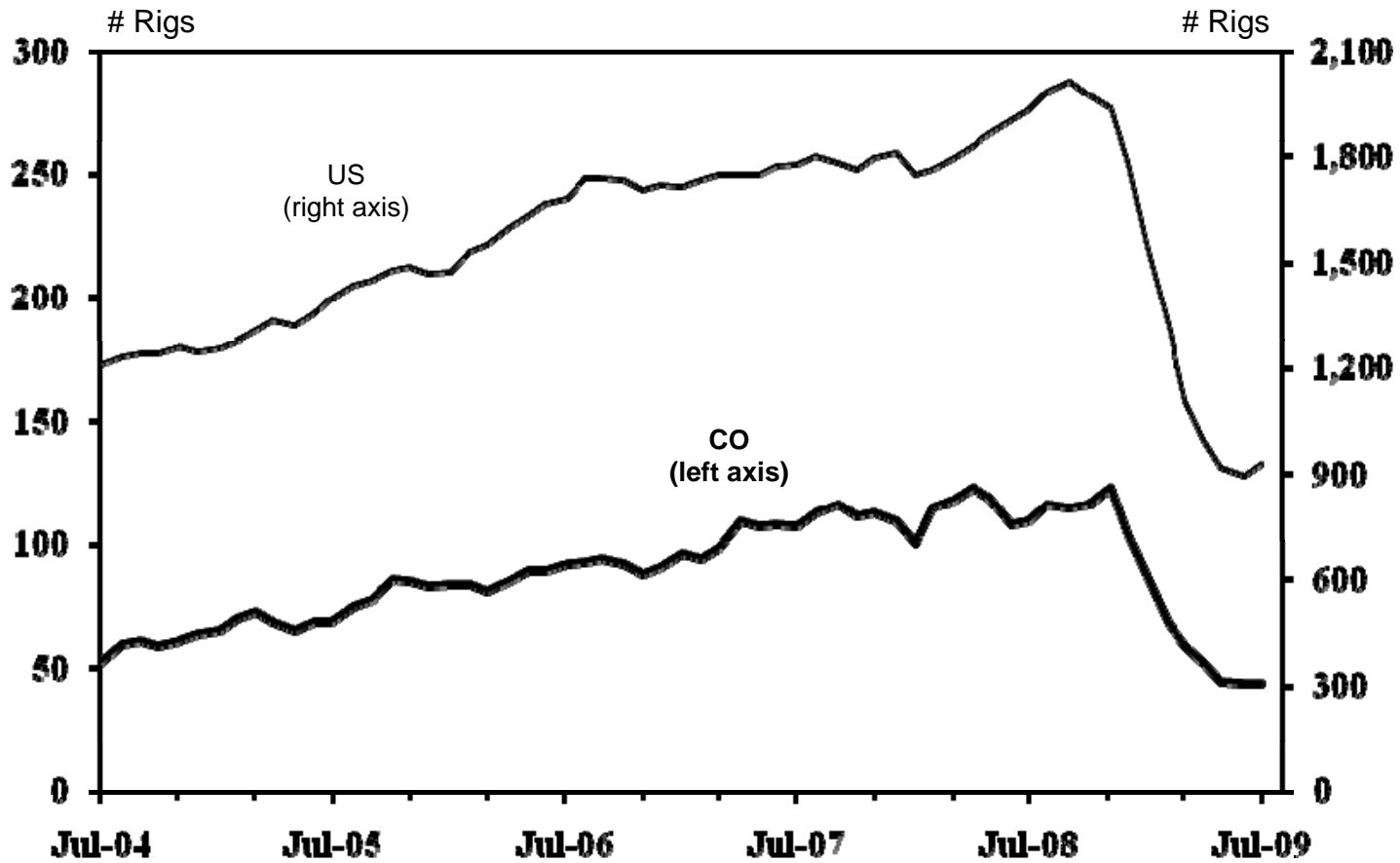
Inventories of Unsold Homes in Major Metro Areas  
Seasonally Adjusted





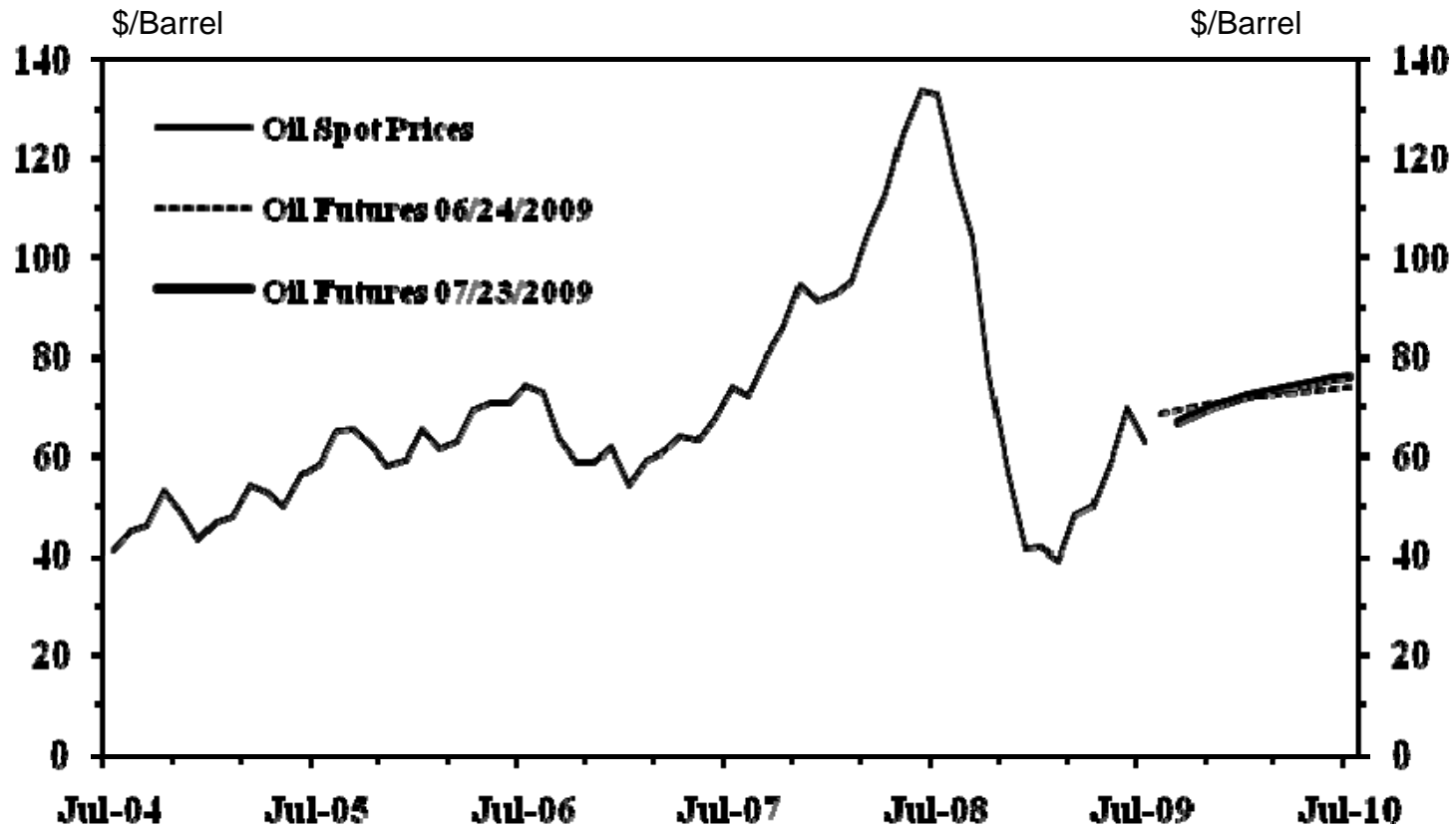
# Bottom in Oil/Gas Drilling Activity?

Count of Active Drilling Rigs



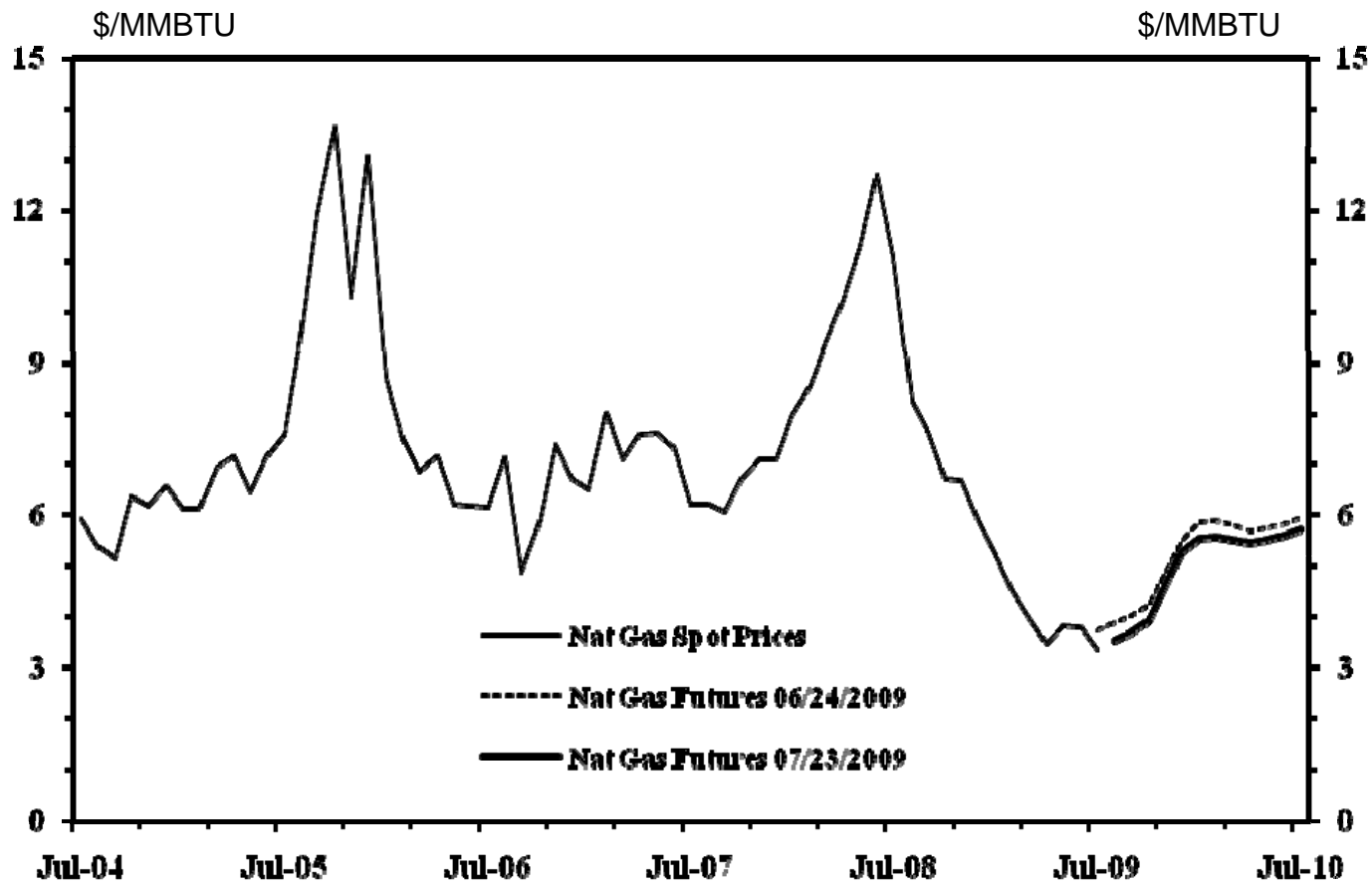
# Oil Prices are Near Pre-Boom High...

Oil Prices



# ... but no Meaningful Bounce in Natural Gas Prices

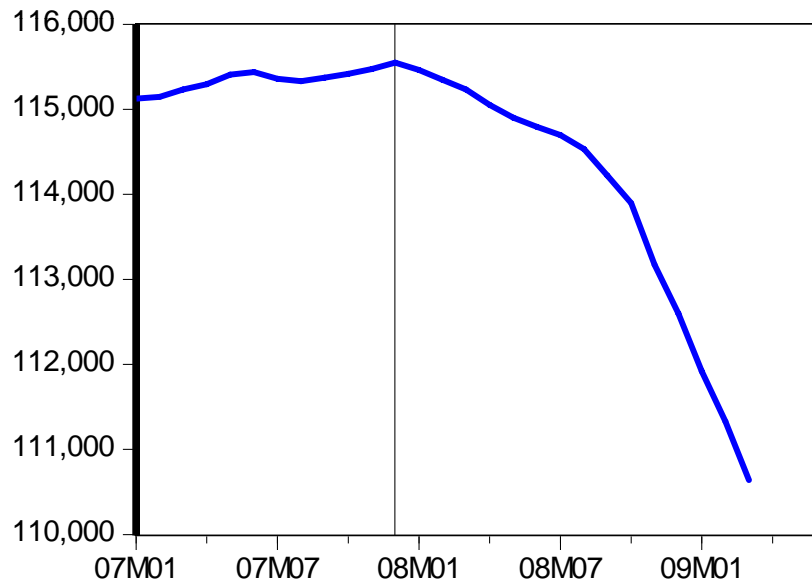
Natural Gas Prices



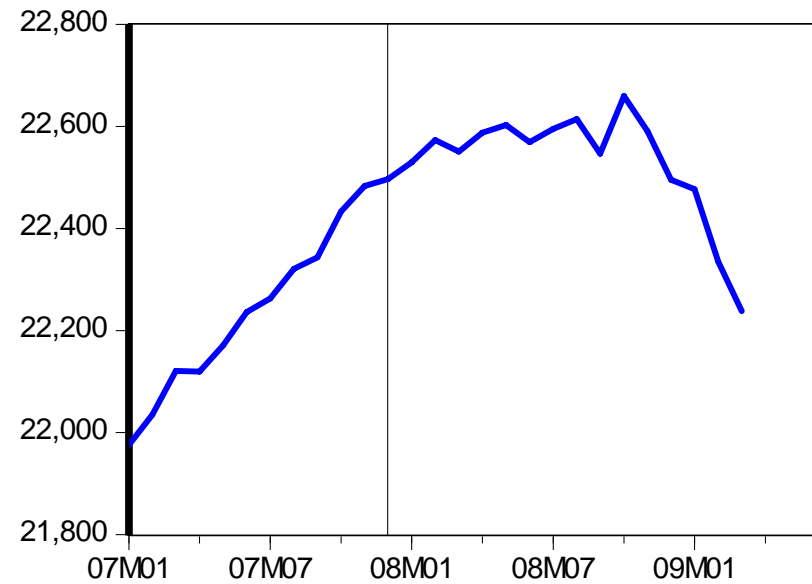
# Oil and Gas Activity Matters in CO and other Energy States

## Total Nonfarm Employment Seasonally Adjusted

### Non-Energy States

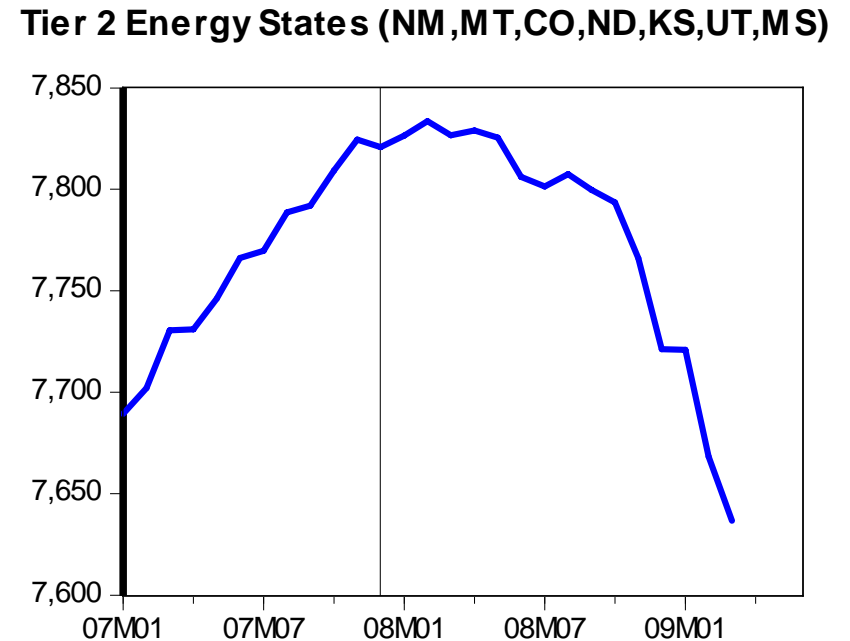
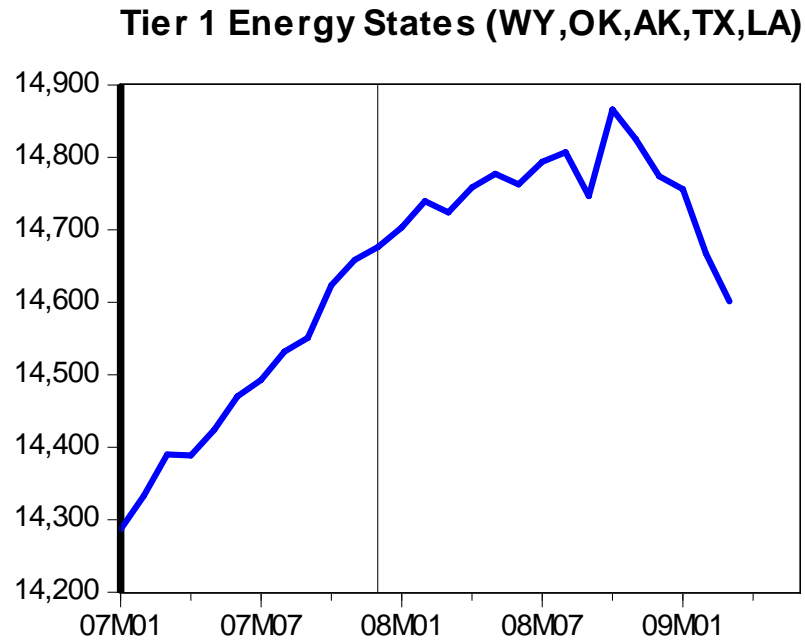


### Energy States



# Energy Matters Most in Tier 1 Energy States

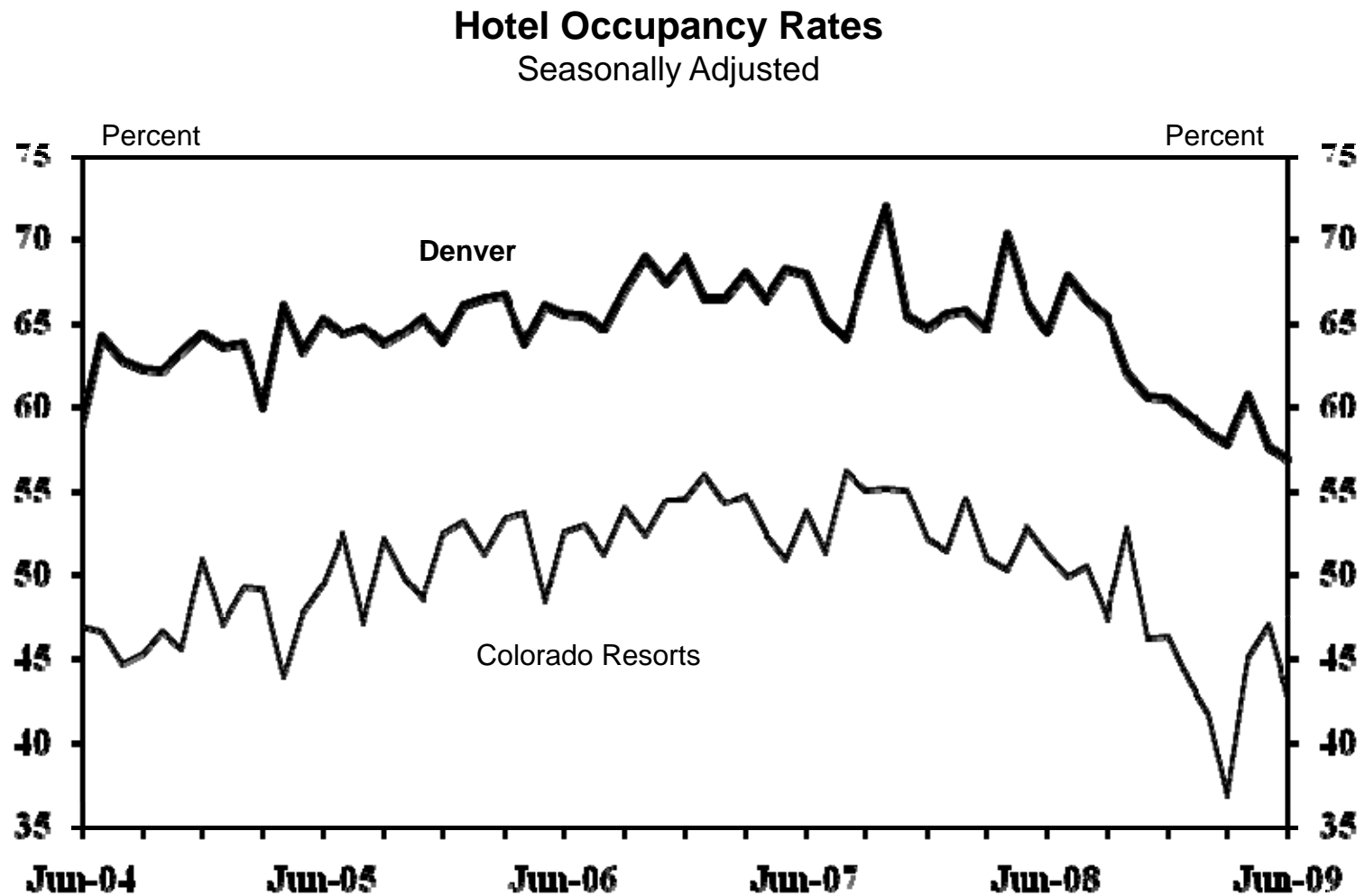
## Total Nonfarm Employment Seasonally Adjusted



Source: Bureau of Economic Analysis, Bureau of Labor Statistics

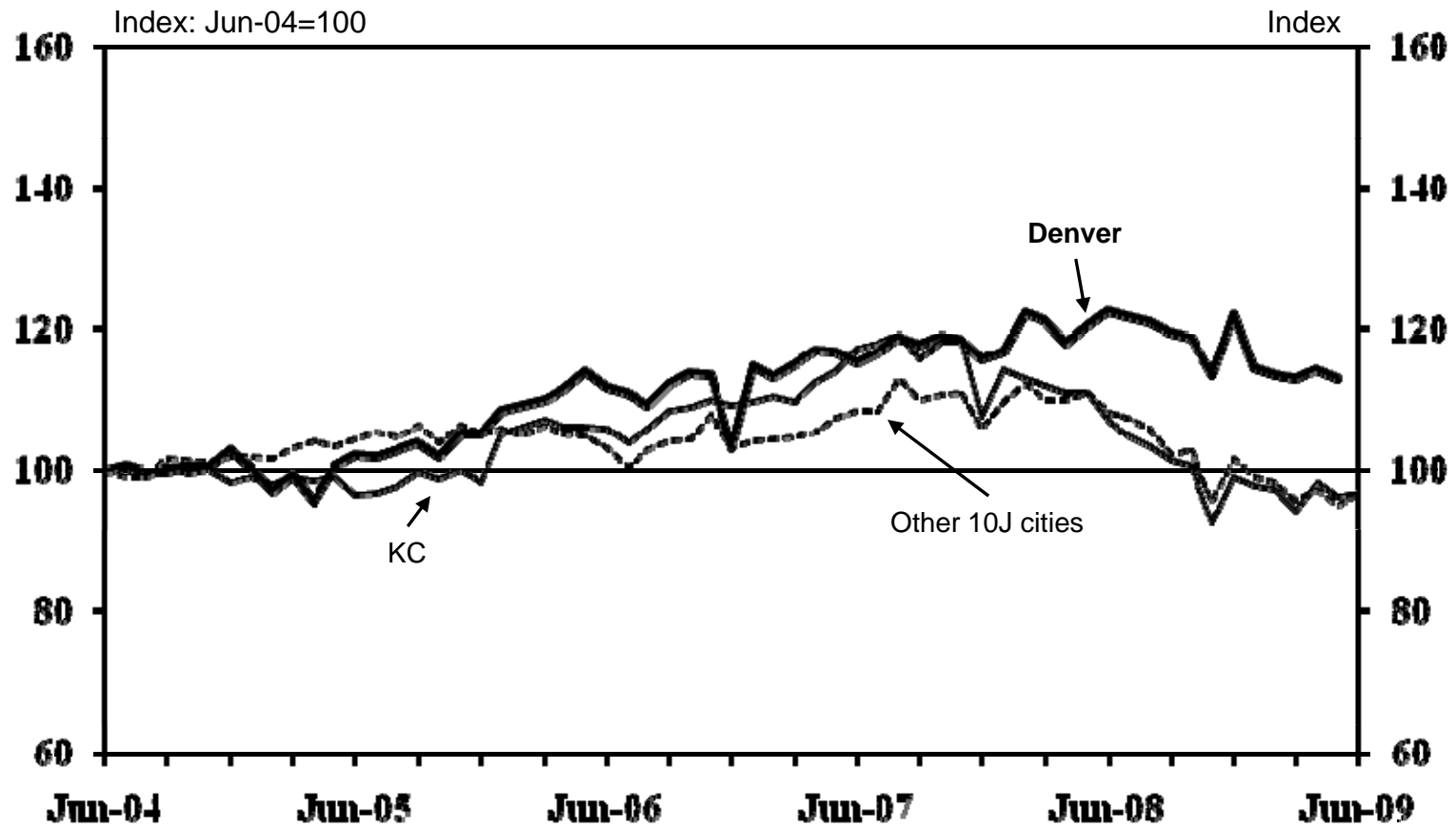
Note: Tiers based on earnings from the mining sector as a percentage of total earnings.

# Hotel Occupancy Rates Remain Weak



# No Improvement in Air Passenger Traffic

**Airport Passenger Traffic**  
Seasonally Adjusted





---

Questions?