



**UNITED STATES DEPARTMENT OF COMMERCE**  
**Economics and Statistics Administration**  
**U.S. Census Bureau**  
Washington, DC 20233-0001

August 12, 2010

DSSD 2010 AMERICAN COMMUNITY SURVEY MEMORANDUM SERIES #ACS10-R-1

MEMORANDUM FOR Susan Schechter  
Chief, American Community Survey Office

From: David C. Whitford */signed/*  
Chief, Decennial Statistical Studies Division

Prepared by: Andre L. Williams and Don Keathley */signed/*  
American Community Survey Sample Design Branch  
Decennial Statistical Studies Division

Subject: Evaluation of the Quality of the 2006-2008 ACS Group Quarters  
Sampling Frame

## **EXECUTIVE SUMMARY**

The American Community Survey (ACS) and Puerto Rico Community Survey (PRCS) full implementation of Group Quarters (GQ) data collection began in 2006. The quality of the estimates from the GQ sample is directly impacted by the quality of the GQ sampling frame. One of the major building blocks of the GQ sampling frame is the Master Address File (MAF), which includes the inventory of GQs enumerated during Census 2000. Other building blocks of the GQ sampling frame include updates from state prison research, updates from military liaisons, a file of seasonal GQs that were closed on April 1, 2000, research into problems encountered by ACS Field Representatives (FRs), a file of migrant worker camp locations/addresses, and monthly files containing results of ACS field work. Although non-existent GQ records are being removed from the sampling frame when found, one of the major concerns for the ACS is that there is no systematic mechanism in place to add GQs to the sampling frame throughout the decade. Updates will rely primarily on the 2010 Census. This evaluation answers key research questions that are directly related to the quality of the sampling frame.

The following are the key findings of this evaluation, based on the 2006-2008 ACS GQ experience:

#### Distribution of GQ Level Outcomes

- The ACS does very well at locating sampled GQs once in the field as is evident by the low number of sampled GQs coded as “Unable to locate”. There were only three GQs between 2006-2008 that FRs were unable to locate.
- There were a relatively high percentage of ineligible GQs on the sampling frame, including GQ adds.
  - Approximately six percent of the GQs in sample were determined to be housing units in 2006 and 2008 while about seven percent were determined to be housing units (HU) in 2007. The rates for GQ adds were about five percent in 2007 and approximately three percent in 2008 (the differences between the GQ add rates versus the HU determination rates, by year, as well as the differences between the GQ add rates themselves, were not statistically significant).
  - The percent of GQs in sample that were determined to be no longer in existence was between four and six percent in 2006, 2007, and 2008. The rates for GQ adds were about 7.5 percent in 2007 and five percent in 2008 (the difference in the GQ add rates is not statistically significant).
  - The percent of GQs in sample determined to be out of scope was around 3.5 percent in 2006 and approximately 2.75 percent in 2007, and 2008. Out of scope GQs include: soup kitchens, regularly scheduled mobile food vans, targeted non-sheltered outdoor locations, domestic violence shelters, maritime/merchant vessels, and living quarters for victims of natural disasters.

#### Frequency of Name Changes

- The frequency of GQ name changes on the 2007 and 2008 GQ sampling frames was relatively low. Less than one percent of the GQs on the 2007 and 2008 GQ sampling frames had name changes; less than 1.5 percent of the GQ adds on the 2007 and 2008 sampling frame had name changes.

#### Frequency of Address Changes

- The frequency of address changes on the 2007 and 2008 GQ sampling frames was relatively low. Less than one percent of the GQs on the 2007 GQ sampling frame had address changes while slightly over one percent of the GQs on the 2008 GQ sampling frame had address changes. Conversely, about 35 and 46 percent of the GQ adds on the 2007 and 2008 GQ sampling frames, respectively, had address changes.

### Deletes from the GQ Sampling Frame

- The percent of deletes from the GQ sampling frames in 2007 and 2008 was between one and two percent. Of the total valid GQs on the 2007 GQ sampling frame, there were 2,432 deletes. Of the total valid GQs on the 2008 GQ sampling frame, there were 2,757 deletes. These are GQs that were on the prior year's sampling frame but were removed prior to the creation of the current year's sampling frame from various sources of deletes.

### Ungeocoded GQs in Sample Geocoded in the Field

- The percent of ungeocoded GQs in sample that were geocoded in the field was very low in both 2007 and 2008: 1.6 percent (5 out of 315 ungeocoded GQs in sample) in 2007 and 2.3 percent (4 out of 175 ungeocoded GQs in sample) in 2008 (the difference in these rates is not statistically significant).

### Expected and Observed Populations

- There is evidence from the sampling frame that suggests that the population updates that the ACS uses have resulted in more representative expected GQ population counts.
- The expected population sums in September primarily reflect the addition of the GQs that are part of the Bureau of Prisons (BOP); they also reflect, to a smaller degree, the Remote Alaska (hard to reach areas in Alaska) GQs.

### Adds to the GQ Sampling Frame

- The number of GQ adds on the sampling frame decreased from 3,060 in 2007 to 339 in 2008. The relative large number of adds in 2007 was due, in part, to a one-time addition of migrant worker camps that are maintained by Census staff. Of the total valid GQ adds on the 2007 sampling frame, there were 241 (7.9%) GQ adds in sample. Of the total valid GQ adds on the 2008 sampling frame, there were 60 GQ adds (17.7%) in sample. These adds are based on various sources of additions listed in Section II of the evaluation.

## **I. Introduction**

The first full implementation of the American Community Survey (ACS) and Puerto Rico Community Survey (PRCS) Group Quarters (GQs) sample began in 2006. The list of GQs used as the sampling frame for the ACS<sup>1</sup> was created primarily from the Census 2000 inventory of GQs. Since that time, other than GQs that have been removed from the frame, there has been relatively little change to this frame. The quality of the GQ sample, and thus the ACS GQ and total population estimates, are directly impacted by the quality of the sampling frame. Therefore, it is important to assess and quantify the key components of the frame that may be lacking. This document provides the results of the evaluation of the quality of the GQ sampling frame. It is important that key components of the sampling frame such as name, address, and geography are updated as the lack of quality data for these components could potentially have a significant impact on GQ sampling efficiency. This report provides the data which answers key research questions such as the frequency of name and address changes, ungeocoded GQs in sample and other research questions as specified in Section III, and attempts to provide potential explanations as to the implications of certain findings.

## **II. Background**

Currently there are very few sources that provide updated information about the GQ inventory of the United States (U.S.) and Puerto Rico (P.R.). This is in contrast to the housing unit (HU) address inventory from the Master Address File (MAF) used for sampling. These addresses are updated twice yearly via the delivery sequence file (DSF) from the U.S. Postal Service. There is no corresponding systematic update to the GQs universe in the MAF, or to the list of GQs that ACS maintains for sampling.

The ACS uses a list of GQs as the sampling frame, which is updated and maintained primarily by staff in the Decennial Statistical Studies Division (DSSD). The GQ records received on the July MAF extracts are modified with additions, changes, and deletions from research done by ACS headquarters (HQ) staff, ACS time of interview updates, and updates received from military and federal prison liaisons. Time of interview updates come from ACS field staff that find differences in geography, address, and various other components of the GQ record between the information associated with the GQ at the time of sampling and what is found in the field. These updates are fed back to headquarters and are used by the ACS.

The following is a list of sources of additions, deletions, and/or changes to the sampling frame:

- State prison research – DSSD conducts internet research each year to find newly opened and closed state prisons. This is possible since each state Department of Corrections maintains a website containing information about their prison facilities.

---

<sup>1</sup> For the remainder of this document, the term ACS will refer to both the ACS and the PRCS.

- Updates from military liaisons – Prior to creation of the 2007 ACS GQ Universe, the Census Bureau worked with military liaisons to obtain updates to the list of GQs on military bases.
- A file of seasonal GQs that were closed on Census Day – These seasonal GQs were closed on April 1, 2000 and never added to the MAF; however, they may be open if visited at other times of the year. This file was originally provided by the Decennial Systems and Contract Management Office and has been used as part of the 2006 and subsequent years ACS GQ universe creation.
- Research into field problems encountered by ACS FRs – When ACS FRs have a problem finding a sample GQ they may send headquarters an address problem referral (APR). HQ staff conducts research to help the FR find the correct GQ. The result of this APR research is used to update the GQ universe in subsequent years.
- A file of migrant worker camp locations/addresses – This file contains migrant worker camps not currently in the MAF. This file was received by the Community Address Updating Systems Branch (CAUSB) of DSSD and was used as part of the 2007 and subsequent years ACS GQ universe creation.
- Monthly files containing results of ACS field work – These files provide GQ name, address, GQ type code and other changes for every GQ in sample in a given month. The files also provide outcome codes that allow us to determine the status of each sample GQ.

### III. Research Questions and Methodology

This report focuses on answering the following research questions for all GQs as well as for GQs from each of the sources listed in Section II at the national, state, major GQ type group, and size category (large/small)<sup>2</sup> levels. These data are provided for 2006-2008. Data for GQ adds and deletes are only provided for 2007 and 2008, since there was no GQ universe prior to 2006.

- What is the distribution of the GQ level outcome codes of sampled GQs and GQ adds (based on GQ facility-level data)? Of particular interest is the frequency of cases coded as “unable to locate”, “GQ out of scope”, “GQ converted to housing unit”, and “GQ no longer exists”.*

GQs coded as any of the above outcomes except “Unable to locate” should not appear on the GQ sampling frame. Ineligible units that are selected into sample have a negative impact on the efficiency of the sampling. The GQs coded as “Unable to locate” are generally the result of a lack of a complete address, name, or geographical information that are needed in locating the sampled GQ, which also impacts sampling

---

<sup>2</sup> Small GQs are those with an expected population (EXPOP)  $\leq 15$  and those that are closed on Census day. Large GQs are those with an EXPOP  $> 15$ .

efficiency. GQ facility-level data are collected each month through an automated instrument. Files are created that contain GQ level outcome codes of sampled groups of 10 expected person interviews referred to as hits. For GQs that had multiple hits within the same month, we included only one of the hits in the distribution since the other hits have the same outcome code. If a GQ was in sample more than once throughout the year, we only counted the GQ once in those instances where the outcome code was the same. If a given GQ was in sample more than once during a year and the outcome codes differed, then each individual outcome code was tallied.

- b. *What is the frequency of changes to the name and address fields for all GQs and GQ adds?*

The GQ universe files were used to obtain the frequency of changes to the name and address fields<sup>3</sup>. The GQ universe files provides the final set of GQs that are input to the current year's GQ sampling operation and it also serves as a major source of information for the creation of the Sample Control Input Files (SCIFs) for the ACS GQ field operations. The GQ universe file was compared to the previous year's GQ universe file to obtain the frequency of changes. Since the first GQ universe file was for 2006, the frequency of changes to the name and address fields couldn't be produced prior to 2007. If the GQ name was different on the two universe files compared, that was counted as a GQ name change. The two fields used to determine an address change were the house number and street name. If the house number or street name were different on the two universe files compared, that was counted as a GQ address change.

- c. *How many ungeocoded GQs and GQ adds are in sample?*

The GQ sampling output file was used to obtain the number of ungeocoded GQs in sample. The GQ sampling output file contains the combined large and small GQ samples for the current sample year. If the GQ on the GQ sample file had a missing value for the BLOCK variable then the GQ was an ungeocoded GQ.

- d. *What is the frequency of ungeocoded GQs and GQ adds that are geocoded in the field?*

The temporary file produced from the GQ sampling output file containing the ungeocoded GQs for each year was matched to that year's GQ field corrections file, which contains valid geocodes. The file containing the GQs from the match was then used to produce the frequency of ungeocoded GQs that are geocoded in the field.

---

<sup>3</sup> For more information on the GQ Universe, refer to the specification titled, "Creating the Group Quarters Universe for the American Community Survey for Sample Year <YYYY>" where <YYYY> is the sample year of interest.

<sup>4</sup>For 2006, since the sample file didn't have the BLOCK variable, the block group variable "BG" was used to determine if a GQ was an ungeocoded GQ.

- e. *What is the magnitude of the difference in the expected population count at the time of sampling and the observed population at the time of the GQFQ interview for all GQs and GQ adds?*

The expected population at the time of sampling (S\_EXPOP) and the observed population at the time of the GQFQ interview (CURPOP) from the combined monthly Group Quarters Facility Questionnaire (GQFQ) files were used to determine the magnitude of the difference in the expected population count at the time of sampling and the observed population at the time of the GQFQ interview. These differences were calculated for each panel for 2006, 2007, and 2008. Additionally, the percent difference was calculated for each panel in 2006, 2007, and 2008.

The ACS currently does not compute standard errors for GQs for the statistics in this report. As a result, the statistical testing in this report used the simple random sample (SRS) variance estimator for computing standard errors for proportions (the standard  $pq/n$  method). The resulting standard errors also reflect the use of a finite population correction factor, which takes the overall sampling proportion into account. We believe that the SRS standard error estimates are conservative, i.e., that they tend to overestimate the sampling errors. This means that any differences that are statistically significant using these errors would more than likely be statistically significant as well had the ACS computed standard errors that reflected its sample design. Conversely, differences that are not statistically significant using the SRS method could be statistically significant if ACS sample design-based standard errors were available.

#### IV. Results

##### A. Distribution of GQ Level Outcome Codes

See Table 1 in Attachment A for a list of outcome codes and descriptions of the codes. Table 2 in Attachment A provides a list of the major GQ type groups and descriptions for each. Attachment B provides the distribution of the GQ level outcome codes for sampled cases for 2006 to 2008, which includes total GQs, number of GQs for each measure of interest, and percent of total GQs within each measure of interest. The outcomes of interests for this evaluation which are discussed here are: completed updating and sampling (equivalent to completed interviews), unable to locate, GQ no longer exists, GQ converted to HU, no residents in GQ, and GQ out of scope. The GQs determined to be out of scope are those that should be excluded from the GQ sampling universe and data collection operations due to operational difficulties associated with data collection which includes: soup kitchens, domestic violence shelters, maritime/merchant vessels, etc.

The total numbers of GQs provided in Tables 3-18 are based on the number of unique GQ outcomes for all GQs in the combined monthly GQFQ files. There was a decrease in the total number of GQs in sample from 2006 to 2007 of 216 and a decrease of 91 from 2007 to 2008 for the U.S. For P.R., the number of total

GQs only decreased by two from 2006 to 2007 and the number of total GQs in sample remained the same from 2007 to 2008.

1. U.S. and P.R.

Table 3 shows the distribution of GQ level outcome codes of sampled GQs for the U.S. and P.R for 2006 to 2008. We discuss some of the outcomes here (these are final outcomes assigned at closeout). Note the outcome code values are in parenthesis.

a. Completed Updating and Sampling (801)

During a GQ visit, the FR verifies or updates, if necessary, certain information related to the GQ such as name, address, type code, population size, etc. The FR selects a sample of persons within the GQ by using the sampling component of the GQFQ instrument; the method for selecting persons within GQs is systematic sampling. Once the FR completes these two processes, the GQ is given the GQ level outcome defined as “completed updating and sampling” signifying that updated GQ information have been provided and the person sample has been generated. For all three years more than 74 percent of the sampled GQs for the U.S. were coded as “completed updating and sampling”. For the U.S., there was an increase in the percent of sampled GQs coded as “completed updating and sampling” from 2007 to 2008 but a decrease from 2006 to 2007. The P.R. rates in 2006, 2007, and 2008 were not statistically significantly different from each other. The rates for the U.S. and P.R. suggest that the FRs are doing well at obtaining completed GQ interviews.

b. Unable to Locate (814)

In 2006, 2007, and 2008 combined, there were only three GQs for the U.S. that were coded as “unable to locate”. There were no GQs for P.R. in 2006-2008 that were coded as “unable to locate”. For both the U.S. and P.R., this suggests that the sampling frame contains sufficient address information necessary for locating the sampled GQs.

c. GQ No Longer Exists (840)

In 2007 and 2008, the percent of total GQs in sample that were determined to be no longer in existence was about five percent for the U.S. In 2006 the rate was just under five percent. For the U.S., there was a small increase in the percent of those GQs in sample that were determined to be no longer in existence from 2006 to



2008 (the difference between the 2006 and 2007 rates was not statistically significant). There was a 10.3 percentage point increase in the percent of GQs in sample determined to be no longer in existence between 2006 and 2008 for P.R. For P.R., the percent of total GQs in sample that were determined to be no longer in existence was about 10 percent in 2006, 16 percent in 2007 and 20 percent in 2008 (the 2007 rate was not statistically significantly different from the 2006 and 2008 rates). For the U.S. and P.R., we should explore ways to improve the identification of GQs that are no longer in existence as part of the frame updating process. The high percent of GQs in sample that were determined to be no longer in existence in P.R. may translate into a loss of money but not a loss of sample since the sampling rate is fixed.

d. GQ Converted to HU (841)

For all three years, the percent of GQs in sample in the U.S. that were converted to housing units was greater than five percent. This suggests we should explore ways to improve the identification of cases prior to universe creation that appear to be GQs but are actually housing units. There was a 1.6 percentage point increase in the percent of GQs converted to housing units from 2006 to 2007 but a 1.3 percentage point decrease from 2007 to 2008. For P.R. there were only four GQs between 2006 and 2008 that were determined to be housing units.

e. Domestic Violence Shelters (842)

The percent of GQs determined to be domestic violence shelters remained relatively constant from 2006 to 2008 for the U.S. The number of GQs that were domestic violence shelters was less than 25 for all three years for the U.S. There were no GQs determined to be domestic violence shelters for P.R. from 2006 to 2008.

f. No Residents in GQ (843)

For all three years, the percent of GQs in sample determined to have no residents was about nine percent. This suggests there are certain types of GQs such as college dormitories that may have residents when we go at a certain time during the year but no residents when we go at another time during that same year. For P.R., fewer than eight percent of the GQs in sample were determined to have no residents.

g. GQ Out of Scope (844)

In the U.S., the percent of GQs that were coded as “GQ out of scope” was between 2 and 4 percent for all three years. The percent of GQs considered out of scope decreased slightly from 2006 to 2008 for the U.S. For the U.S., we should explore ways to improve the identification of cases prior to universe creation that are out of scope. For P.R., there were about seven percent sampled GQs coded as “GQ out of scope” for each of the three years.

2. States

Table 4 shows the 2006 to 2008 distribution of GQ level outcome codes of sampled GQs for each state. We will discuss some of the outcomes here.

*Note: “approximately” in this section means that a rate was not significantly different from the percent to which it was compared, e.g., if a state had a rate that was approximately 75 percent, then its rate was not statistically significantly different from 75 percent.*

a. Completed Updating and Sampling (801)

Percent Range	Number of States with GQs Completed Updating and Sampling		
	2006	2007	2008
Less than 75%	4	9	4
Approximately 75%	31	30	32
Greater than 75%	16	12	15

The table shows the number of states in all three years with a less than 75 percent “completed updating and sampling” rate, an approximately 75 percent rate, and a greater than 75 percent rate.

b. Unable to Locate (814)

Virginia was the only state that had a GQ in sample that wasn’t able to be located in 2006. Alaska and Washington were the only two states that had a GQ in sample that wasn’t able to be located in 2007. There were no states in 2008 that had GQs in sample that were coded as “unable to locate”.

The small number of sampled GQs at the state level coded as “unable to locate” suggests that the sampling frame contains sufficient address information for GQs for each state.

c. GQ No Longer Exists (840)

Percent Range	Number of States with GQs No Longer in Existence		
	2006	2007	2008
Less than 5%	10	12	10
Approximately 5%	38	34	34
Greater than 5%	3	5	7

The table shows the number of states in all three years with a less than 5 percent “GQ no longer exists” rate, an approximately 5 percent rate, and a greater than 5 percent rate.

d. GQ Converted to HU (841)

Percent Range	Number of States with GQs Converted to Housing Units		
	2006	2007	2008
Less than 5%	9	5	12
Approximately 5%	34	28	30
Greater than 5%	8	18	9

The table shows the number of states in all three years with a less than 5 percent “GQ converted to HU” rate, an approximately 5 percent rate, and a greater than 5 percent rate.

e. No Residents in GQ (843)

Percent Range	Number of States with GQs Converted to Housing Units		
	2006	2007	2008
Less than 9%	8	8	4
Approximately 9%	38	38	38
Greater than 9%	5	5	9

The table shows the number of states in all three years with a less than 9 percent “No residents in GQ” rate, an approximately 9 percent rate, and a greater than 9 percent rate.

f GQ Out of Scope (844)

Percent Range	Number of States with GQs Converted to Housing Units		
	2006	2007	2008
Less than 3%	7	11	17
Approximately 3%	38	34	29
Greater than 3%	6	6	5

The table shows the number of states in all three years with a less than 3 percent “GQ out of scope” rate, an approximately 3 percent rate, and a greater than 3 percent rate.

3. Major GQ Type (U.S. and P.R.)

Table 5 shows the 2006 to 2008 distribution of GQ level outcome codes of sampled GQs by major GQ type. We will discuss some of the outcomes here.

a. Completed Updating and Sampling (801)

In all three years, correctional facilities had more than 90 percent of its GQs in sample that completed updating and sampling – they had the highest percent of GQs in sample that completed updating and sampling. Conversely, “other GQ type” had the lowest percent in 2006 and 2007 (about 50 percent) while “other GQ type” and homeless shelters had the lowest percent in 2008 (about 55 percent).

b. Unable to Locate (814)

In 2006, only one GQ was coded as “unable to locate” and that GQ was a military facility. In 2007, two GQs were coded as “unable to locate” of which one was a correctional facility and the other an “other type GQ”. There were no GQs in 2008 coded as “unable to locate”.

There doesn’t appear to be a problem with locating sampled GQs from each of the major GQ types. We should expect that a high percentage of the sampled GQs from each of the major GQ types will be able to locate providing sufficient address information.

c. GQ No Longer Exists (840)

In 2006 and 2007, correctional facilities and college dorms had the lowest percent of sampled GQs determined to no longer be in

existence (the difference in their percents were not statistically significant). In 2008, correctional facilities alone had the lowest percent.

d. GQ Converted to HU (841)

In 2006 and 2007, “other GQ type” had the highest percent of sampled GQs coded as “GQ converted to HU”; group homes had the highest percent in 2008 (given that group homes tend to be like housing units, it is not surprising that they topped the list in at least one of the three years). Less than 1.5 percent of sampled correctional facilities and juvenile detention centers were coded as “GQ converted to HU” in 2006; less than 1 percent of sampled correctional facilities in 2007 and 2008 received this code.

e. No Residents in GQ (843)

In all three years, college dormitories had the highest percent of sampled GQs coded as “no residents in GQ”. The high rate of no residents in college dorms may be due to some college dorms being in sample more than once in a year and these same dorms may be closed if visited during certain times of the year such as the summer. To reduce this, the sample for dorms could be clustered to reduce the number of hits assigned to summer months. In each of the three years, nursing homes had the lowest percent of sampled GQs determined to not have residents.

f. GQ Out of Scope (844)

The ranges in the percents of sampled GQs that were coded as “GQ out-of-scope” were similar for all three years.

4. Size Category (large/small)

Table 6 shows the distribution of GQ level outcome codes of sampled GQs by size for 2006 to 2008. We will discuss each of the outcomes here.

a. Completed Updating and Sampling (801)

There was a minor decrease in the percent of large sampled GQs that were coded as “completed updating and sampling” from 2006 (79.9 percent) to 2007 (78.6), then an increase from 2007 to 2008 (80.1). The 2008 rate was not statistically significantly different from the 2006 rate. The rate for small sampled GQs was about 56 percent across the three years. The large sampled GQs are doing very well at completing updating and sampling. The rate for small

GQs may be affected by the high rate of small sampled GQs converted to housing units and those with no residents in GQ.

b. Unable to Locate (814)

There were only three GQs between 2006 and 2008 that were coded as “unable to locate” and they all were large GQs. There were no small GQs coded as “unable to locate”. This suggests the sampling frame contains sufficient address information necessary in locating the large and small sampled GQs.

c. GQ No Longer Exists (840)

For large GQs, the GQs in sample that were determined to be no longer in existence remained relatively constant across the three years (between 3 and 4 percent). The percent of small sampled GQs that were determined to be no longer in existence rose from 12.2 percent in 2006 to 14.1 percent in 2008. Not only are small GQs more likely to no longer exist, upon a visit from an FR, than large GQs, but the rate at which this is occurring has increased. This suggests that we need to explore ways of identifying small GQs that are that are no longer in existence prior to frame updating.

d. GQ Converted to HU (841)

The percent of large sampled GQs that were determined to be housing units rose from about 4 percent in 2006 to about 5.6 percent in 2007, then decreased to about 4 percent again in 2008. The percent of small GQs that were housing units was about 15 percent in 2006 and about 16 percent in 2007 and 2008 (the 2006 rate was not statistically significantly different from the 2007 and 2008 rates). The higher small GQ rates suggest that we need to focus our efforts on identifying small GQs on the sampling frame that are actually housing units.

e. No Residents in GQ (843)

The percent of large sampled GQs that were determined to have no residents rose from about 9 percent in 2006 to about 10 percent in 2007; it remained at about 10 percent in 2008. The percent of small sampled GQs that were determined to have no residents declined from about 8 percent in 2006 to about 7 percent in 2007, then remained at about 7 percent in 2008. The large and small rates in 2006 were not statistically significantly different.

f. GQ Out of Scope (844)

The percent of large sampled GQs that were determined to be out of scope decreased from about 3 percent in 2006 to about 2 percent in 2007; the percent remained at about 2 percent in 2008. The percent of small sampled GQs that were determined to be out of scope was about 6.6 percent for all three years.

B. Frequency of Name and Address Changes

Attachment B provides the frequency of GQ name and address changes for 2007 and 2008. Since there was no GQ universe prior to 2006, the frequency of name and address changes couldn't be determined for 2006.

1. U.S. and P.R. and States

Percent Range	Number of States With Name Changes		Number of States With Address Changes	
	2007	2008	2007	2008
<0.5%	22	14	23	3
0.5-1.0%	15	31	19	17
>1.0%	14	6	9	31

Tables 7 and 8 in Attachment B provide the frequency of name and address changes, respectively for GQs in the U.S., P.R., and each state. Fewer than one percent of the GQs in the U.S. had name changes. In P.R., the rate was still low in that less than 2.5 percent of the GQs had name changes. Similarly, address changes were found in the U.S. at fewer than two percent of the GQs and for P.R. it was less than one percent. The rates of name changes in the U.S. ranged from 0 to 5.5 percent in 2007 and from 0 to 2.3 percent in 2008. The rates of address changes ranged from 0 to 2.3 percent in 2007 and from 0.3 to 3.2 percent in 2008<sup>4</sup>.

2. Major GQ Type

Tables 9-10 in Attachment B provide the frequency of name and address changes, respectively for GQs by major GQ type. In 2007, 4.6 percent of the total GQs in the college dormitories major GQ type had GQ name changes. This group represented the highest rate of GQ name changes of all the major GQ types for 2007. Most GQ types had very low rates of name changes (<0.5%); only college dormitories and military facilities had rates above one percent. In 2007, 4.4 percent of the total GQs in the military facilities major GQ type group had GQ address changes; it was

<sup>4</sup> The range of rates for address changes in 2008 is not statistically significantly different from either the range of rates for address changes in 2007 nor from the range of rates for name changes in 2008.

2.4 percent in 2008. In 2008, 3.6 percent of the total GQs in correctional facilities major GQ type group had GQ address changes and 1.1 percent in 2007. These groups represented the most GQ address changes of all major GQ type groups for 2007 and 2008, respectively.

3. Size Category (large/small)

Table 11 in Attachment B provides the frequency of name and address changes, respectively for GQs by size. The percent of name and address changes for large GQs was between 1 and 3 percent for 2007 to 2008. The percent of name changes and address changes was less than one percent for small GQs from 2007 to 2008. Given the rate of name and address changes for large GQs suggests that these GQs are more likely to have these types of changes. On the other hand, given the rate of name and address changes for small GQs suggest that name and address changes are likely to be rare.

C. Ungeocoded GQs in Sample

1. U.S. and P.R and States

<b>Percent Ungeocoded GQs</b>	<b>2006</b>	<b>2007</b>	<b>2008</b>
5			
<1%	37	15	34
1-5%	14	34	15
>5%	0	2	2

Table 12 in Attachment B provides the number of ungeocoded GQs in sample from 2006 to 2008 for the U.S., P.R. and the states. Fewer than two percent of the U.S. sample of GQs were ungeocoded for all three years. The percent of ungeocoded GQs in P.R. ranged from zero percent in 2008 to 2.25 percent in 2007 (this difference is not statistically significant). At the state level, Hawaii had an ungeocoded GQ rate in 2007 of 8.8% (this rate was not statistically significantly different from some of the other rates in 2007, nor from upper-end rates in 2008).

2. Major GQ Type

Table 13 in Attachment B provides the number of ungeocoded GQs in sample from 2006 to 2008 by major GQ type. The two highest rates of ungeocoded GQs came in 2007 and 2008, for military facilities (10.1 and 7.9 percent, respectively). By comparison, correctional facilities in 2007 had the next highest rate with 4.0 percent while “other GQ types” had the next highest rate in 2008 at 4.7 percent, and the majority of rates across all



three years was less than two percent. This suggests that any effort to minimize the occurrence of ungeocoded GQs should start with military facilities.

3. Size Category (large/small)

Table 14 in Attachment B provides the number of ungeocoded GQs in sample from 2006 to 2008 by size. The rates between the large and small GQ strata were not statistically significantly different in 2006 and 2008.

D. Ungeocoded GQs Geocoded in the Field

1. U.S. and P.R. and States

Table 15 in Attachment B shows the number of ungeocoded sample GQs geocoded in the field for 2007 and 2008 for the U.S., P.R., and each state. There were no ungeocoded GQs in sample that were geocoded in the field for P.R. in 2007 and 2008. For 2006, there were no ungeocoded GQs geocoded in the field. There were no more than five ungeocoded GQs geocoded in the field for 2007 and 2008. Only the states shown in Table 15 had ungeocoded GQs in sample that were geocoded in 2007 and 2008; the remaining states had zero such GQs.

The low number of geocoded GQs is probably due to the forms used to collect the geocode corrections and assignments not being completed and/or mailed back to headquarters. In 2009 an automated method for field geocoding was implemented, which we expect to contribute to a large improvement in these rates.

2. Major GQ Type

Table 16 in Attachment B shows the number of ungeocoded sample GQs geocoded in the field for 2007 and 2008 by major GQ type group. In 2007, 3.5 percent of the total ungeocoded GQs in the military facilities major GQ type group were geocoded in the field; this rate was 3.2 percent in 2008 (these rates are not statistically significantly different).

3. Size Category (large/small)

Table 17 in Attachment B shows the number of ungeocoded sample GQs geocoded in the field for 2007 and 2008 by size. In 2007, 1.7 percent of the total ungeocoded large GQs were geocoded in the field; this rate was 1.3 percent in 2008 (these rates are not statistically significantly different). There were no small ungeocoded GQs that were geocoded in 2007.

E. Magnitude of Difference Between Expected Population and Observed Population

The expected population for GQs is mainly from Census 2000. However, updates from various sources such as: ACS GQ field operations, results of the state prison research, and population counts provided by the BOP provide observed population counts that are used to update the expected population count for the sampling year. The observed population is obtained at the time of the GQ interview.

Table 18 provides the sum of the expected population at the time of sampling, the sum of observed population at the time of the GQ interview, and the percent difference between the two sums by sampling month. Since large GQs can have multiple hits spread across multiple panels, the current population (CURPOP) for these GQs can change from one panel to the next – these changes were captured by splitting the yearly samples by sampling month.

The sum of the expected population is based on those GQs from the monthly GQFQ files where an interview was obtained. The expected population sums in September primarily reflect the addition of the GQs that are part of the Bureau of Prisons (BOP); they also reflect, to a smaller degree, the Remote Alaska GQs (hard to reach areas in Alaska). The large GQ sample hits in all federal correctional facilities that are part of the BOP are assigned to the September panel month. The panel assignment for each Remote Alaska GQ address is based on the specific location of the GQ and therefore could be assigned to the January or September panel.

The sum of EXPOP on the 2006 GQ sampling frame was 7,711,025 but decreased on the 2007 GQ sampling frame to 7,578,635, a decrease of 132,391. The sum of EXPOP on the 2008 sampling frame was 7,340,493, a decrease of 238,142 from 2007. The population updates may have possibly provided population counts that were closer to the observed population at the time of interview as we moved from 2006 to 2007 and from 2007 to 2008.

F. Distribution of Outcome Codes for GQ Adds

See Attachment A for a list of outcome codes and descriptions of the codes. Table 19 in Attachment C provides the distribution of all GQ level outcome codes of sampled GQ adds for 2007 and 2008, which includes total GQ adds, number of GQ adds for each measure of interest, and percent of total GQ adds within each measure of interest. Tables 20 and 21 in Attachment C provide the same distributions broken down by major GQ type and GQ size, respectively. Note that only those outcome codes that were of interest for this evaluation are discussed here.

The total GQ adds provided in Tables 19-21 are based on the number of GQ adds in the combined monthly GQFQ files.

1. U.S.

Table 19 shows the distribution of GQ level outcome codes of sampled GQ adds for the U.S. for 2006 to 2008. We will discuss some of the outcomes here.

a. Completed Updating and Sampling (801)

There were a total of 241 GQ adds in sample for the U.S. in 2007 of which 57.3 percent were coded as “completed updating and sampling”. In 2008, 70 percent of the 60 GQ adds in sample were coded as “completed updating and sampling”. There was a 12.7 percentage point increase in the percent of GQ adds that completed updating and sampling for the U.S.

b. Unable to Locate GQ (814)

There were no GQ adds in sample coded as “unable to locate GQ” in 2007 or 2008 for the U.S.

c. GQ No Longer Exists (840)

In 2007, 18 out of 241 adds (7.5%) were determined to be no longer in existence in 2007. Only 3 out of 60 adds (5.0%) in 2008 were classified as “GQ no longer exists” (the difference in these two percents is not statistically significant).

d. GQ Converted to HU (841)

In 2007, 13 out of 241 adds (5.4%) were determined to be housing units in 2007. Only 2 out of 60 adds (3.3%) in 2008 were classified as “GQ converted to HU” (the difference in these two percents is not statistically significant).

e. No Residents in GQ (843)

In 2007, 55 out of 241 adds (22.8%) were determined to not have residents in 2007. In 2008, 6 out of 60 adds (10.0%) were classified as “No residents in GQ”.

f. GQ Out of Scope (844)

In 2007, 17 out of 241 adds (7.1%) were determined to be out of scope. In 2008, 6 out of 60 adds (10.0%) were classified as “GQ out of scope” (the difference in these two percents is not statistically significant).

2. Major GQ Type

Table 20 shows the distribution of GQ level outcome codes of sampled GQ adds for the U.S. by major GQ type for 2006 to 2008. We discuss each of the outcomes here.

a. Completed Updating and Sampling (801)

In 2007 and 2008, sampled GQ adds in correctional facilities completed updating and sampling at a rate of 100 and about 94 percent, respectively (the difference in these rates is not statistically significant). In 2007, sampled GQ adds in college dormitories and military facilities completed updating and sampling at about 68 percent and about 27 percent for “other GQ types.” The remaining major GQ types had less than five sampled GQ adds completing updating and sampling in 2007. With the exception of correctional facilities, the other major GQ types had less than 10 sampled GQ adds that completed updating and sampling in 2008.

b. GQ No Longer Exists (840)

In 2007, “other GQ types” had 15 sampled GQ adds (about 17 percent of the sampled GQ adds in the major GQ type) that were determined to no longer be in existence. The other major GQ types had either one or no sampled GQ adds determined to be no longer in existence in 2007. In 2008, correctional facilities and “other GQ types” were the only two major GQ types that had sampled GQ adds that were determined to no longer be in existence.

c. GQ Converted to HU (841)

In 2007, “other GQ types” had 11 sampled GQ adds (about 13 percent of the sampled GQ adds in the major GQ type) that were determined to be housing units. The other major GQ types had either one or no sampled GQ adds determined to be a housing unit in 2007. In 2008, college dormitories and “other GQ types” were

the only GQ types that had sampled GQ adds that were determined to be housing units.

d. No Residents in GQ (843)

In 2007, about 21 percent of the sampled GQ adds in military facilities and about 35 percent of the sampled GQ adds in the “other GQ types” were coded as “no residents in GQ”. With the exception of college dormitories (9 sampled GQ adds), the remaining major GQ types had one or no sampled GQ adds coded as “no residents in GQ”. In 2008, with the exception of the “other GQ types” (4 sampled GQ adds), the other major GQ types had one or no sampled GQ adds that was coded as “no residents in GQ”.

e. GQ Out of Scope (844)

In 2007, all the major GQ types had less than 10 sampled GQ adds that were determined to be out of scope. In 2008, all the major GQ types had three or fewer sampled GQ adds determined to be out of scope.

3. Size Category (large/small)

Table 21 shows the distribution of GQ level outcome codes of sampled GQ adds for the U.S. by size for 2006 to 2008. We will discuss each of the outcomes here.

a. Completed Updating and Sampling (801)

There were a total of 186 large GQ adds in sample in 2007 of which 61.3 percent were coded as “completed updating and sampling”. For small GQs, there were a total of 55 GQ adds in sample in 2007 of which 43.6 percent were coded as “completed updating and sampling”. In 2008, 69.5 percent of the 59 large GQ adds in sample were coded as “completed updating and sampling.” For small GQs, there was only one sampled GQ add that was coded as “completed updating and sampling” in 2008. The difference between the 2007 and 2008 rates for large GQs was not statistically significant.

b. GQ No Longer Exists (840)

The percentage of large GQ adds that were no longer in existence in both 2007 and 2008 was about five percent. There were nine

small GQ adds in sample in 2007 that were coded as “GQ no longer exists” in 2007, but none in 2008.

c. GQ Converted to HU (841)

The percentage of large GQ adds that were determined to be housing units in 2007 and 2008 was 4.3 and 3.4 percent, respectively (the difference in these two percents is not statistically significant). There were five small GQ adds that were coded as “GQ converted to HU” in 2007; there were none in 2008.

d. No Residents in GQ (843)

There was a 14.0 percentage point decrease of large GQ adds in sample between 2007 and 2008 coded as “no residents in GQ”. There were ten small GQ adds in sample in 2007 that were coded as “no residents in GQ,” whereas there were none in 2008.

e. GQ Out of Scope (844)

The percentage of large GQ adds that were determined to be out of scope in 2007 and 2008 was 5.4 and 10.2 percent, respectively (the difference in these two rates is not statistically significant). There were seven small GQ adds that were coded as “GQ out of scope” in 2007 – there were none in 2008.

G. GQ Adds – Frequency of Name and Address Changes

1. U.S. and States

Table 22 of Attachment C provides the frequency of name and address changes for GQ adds for the U.S., P.R., and states for 2007 and 2008. Name changes in the U.S. occurred at a less than 1.5 percent rate in both 2007 and 2008. The U.S. saw a increase in the rate of address changes from 2007 to 2008. There was only one GQ add in P.R. in both 2007 and 2008 – neither GQ add experienced a name or address change.

Only eight states in 2007 saw name changes, and only one had more than ten (Michigan had eleven name changes). There was only one name change in 2008 – it was in Pennsylvania. Conversely, only five states in 2007 did not have an address change. The range of the number of address changes, by state, in 2007 was from 0 to 352. In 2008, however, 21 states did not see an address change, and the range of the number of changes was from 0 to 25.

2. Major GQ Type Group

Tables 23 and 24 of Attachment C provide the frequency of name and address changes, respectively, for GQ adds by major GQ type. The “other GQ type” had the greatest number of GQ adds with name changes in 2007 (about 1 percent of the total GQ adds in the major GQ type) and was the only major GQ type in 2008 that had a sampled GQ add with name changes. The “other GQ type” had the greatest number of GQ adds with address changes in 2007 and 2008 with 373 (about 21 percent of total GQ adds in the major GQ type) and 99 GQ adds (about 76 percent of total GQ adds in the major GQ type) with address changes, respectively. The juvenile detention centers had the least number of GQ adds with address changes in 2007 with 14 GQ adds with address changes which was about 54 percent of the total GQ adds in the major GQ type.

3. Size Category (large/small)

Table 25 of Attachment C provides the frequency of name and address changes for GQ adds by size. The rate of address changes for large GQ adds increased by 39.8 percentage points from 2007 to 2008. Less than 20 percent of large GQ adds in 2007 experienced address changes, while over 50 percent had address changes in 2008. In 2007, there were only 20 name changes for large GQ adds. The rate of address changes for small GQ adds was 40.6 percent in 2007 and 36.7 percent in 2008. There were only nine small GQ adds in both 2007 and 2008 combined that had name changes.

H. Ungeocoded GQ Adds in Sample

1. U.S. and States

Table 26 in Attachment C provides the frequency of ungeocoded GQ adds in sample for the U.S. and states. In 2007, about 43 percent of the sampled GQ adds were ungeocoded; about 82 percent were ungeocoded in 2008. Only eighteen states had any ungeocoded GQ adds in 2007; twenty-five states had ungeocoded GQ adds in 2008. In 2007, however, the range of the number of ungeocoded GQ adds for these eighteen states was from 1 to 26; the range for these twenty-five states in 2008 was from 1 to 5.

2. Major GQ Type Group

Table 27 in Attachment C provides the frequency of ungeocoded GQ adds in sample by major GQ type. In 2007, about 89 percent of the sample GQ adds in military facilities were ungeocoded. In 2008, about 94 percent of the sampled GQ adds in correctional facilities were ungeocoded.

3. Size Category (large/small)

Table 28 in Attachment C provides the frequency of large and small ungeocoded GQ adds in sample. All but nine of the 103 ungeocoded GQ adds in 2007 were large GQs. Then, in 2008, all of the ungeocoded GQ adds were large GQs.

I. Ungeocoded GQ Adds Geocoded in the Field

1. U.S. and States

Table 29 in Attachment C provides the frequency of ungeocoded GQs that were geocoded in the field for the U.S. and states. In 2007, there were only two ungeocoded GQ adds that were geocoded in the field for the U.S. and there were none in 2008. California and North Carolina were the two states that had an ungeocoded GQ add that was geocoded in the field.

2. Major GQ Type

Table 30 in Attachment C provides the frequency of ungeocoded GQs that were geocoded in the field by major GQ type. Military facilities was the only major GQ type that had ungeocoded GQ adds that were geocoded in the field.

3. Size Category (large/small)

Table 28 in Attachment C provides the frequency of large and small ungeocoded GQ adds that were geocoded in the field. In 2007, there were two large GQs that were ungeocoded GQ adds that were geocoded in the field. None of the large GQs that were ungeocoded GQ adds in 2008, nor any small GQs that were ungeocoded GQ adds in both 2007 and 2008, had geocoding done in the field.

J. Magnitude of Difference Between Expected Population and Observed Population for GQ Adds

Table 31 in Attachment C provides the sum of expected population at the time of sampling, sum of observed population at the time of the GQ interview, and the percent difference between the two sums by sampling month for GQ adds. The sum of the expected population is based on those GQ adds from the monthly GQFQ files where an interview was obtained. Only in April of 2008, did the sum of the observed populations exceed the sum of the expected populations. All of the other months, for both years, saw larger sums of expected populations.



## K. Deletes from the GQ Universe

Table 32 of Attachment D provides the number of deletes from the GQ universe by source. In both 2007 and 2008, the highest proportion of deletions from the GQ universe were provided by ACS GQ field operations. In 2007, about 55 percent of the deletions were provided by ACS GQ field operations while about 93 percent were provided by the same source in 2008. In 2007, the smallest proportion of deletes from the GQ universe were provided by state prison research (about one percent) while deletes from the GQ universe provided by address problem referrals resulted in the smallest proportion of deletions in 2008 (less than one percent).

## V. Conclusions

The GQ sampling frame provides sufficient GQ address information necessary in helping the FRs locate the sampled GQs once in the field as evident by only three sampled GQs from 2006-2008 that weren't able to be located. There is a need to improve the identification of GQs on the frame for the U.S. that are actually housing units given that more than five percent of sampled GQs were determined to be housing units from 2006-2008. There was a slight increase from 2006 to 2008 in the proportion of sampled GQs that were no longer in existence – this suggests that improvements could be made in the identification of these cases prior to the creation of the GQ sampling frame.

One of the other metrics that was of interest for this evaluation was the frequency of name changes and the number of ungeocoded cases in sample. The frequency of name changes was relatively small between 2007 and 2008 as there was less than one percent name changes for both years, which suggests that a high percentage of GQ names on the sampling frame are accurate. One factor that may be contributing to the low number of GQ name changes is that procedures state that the FR follow the GQ even if it moves. The percent of ungeocoded cases in sample was relatively small, less than 2 percent in all three years.

Another issue that was of interest is how expected population sums compare to observed populations. The sums of the expected populations on the ACS GQ sampling frame decreased in both 2007 (from 2006) and 2008 (from 2007). This suggests that the population updates that the ACS uses have resulted in more representative expected GQ population counts.

## VI. Contact Information

Questions regarding this memorandum should be directed to Andre Williams at (301) 763-1970 or Steven Hefter at (301) 763-4082 or Don Keathley at (301) 763-2225.

cc:

DSSD Management

ACSO Management

ACSSDB

A. Smith (POP)

K. Humes

L. Bates (DSSD)

S. Boggess (HHES)

**Table 1. GQ Outcome Codes and Descriptions**

<b>GQ Outcome Code</b>	<b>Description of GQ Outcome Code</b>
800	New case, not started
801	Completed Updating and Sampling
802	Insufficient Partial: followup required
803	Invalid telephone number: research required
804	Valid telephone number: personal visit required
805	Telephone callback scheduled
806	Appointment made for personal interview
811	GQ refusal – respondent feels can’t comply due to legal restrictions
814	Unable to locate GQ
818	GQ refusal –contact sites non-legal reasons
819	Other Type A GQ
833	Natural disaster (supervisor approval required)
840	GQ No Longer Exists
841	GQ Converted to HU(s)
842	Domestic Violence Shelters
843	No Residents in GQ
844	GQ Out of Scope

*Note: Some of the GQ outcome codes above are discussed in this evaluation and some of the codes listed here are intermediate codes.*

**Table 2. Major GQ Type Group and GQ Type Descriptions**

<b>Major GQ Type Group</b>	<b>GQ Type Description</b>
1	Correctional Facilities
2	Juvenile Detention Centers
3	Nursing Homes
4	Other Long-Term Care Facilities
5	College Dormitories
6	Military Facilities
7	Homeless Shelters
8	Group Homes Intended For Adults
9	Other GQ Type

**Table 3. Distribution of GQ Level Outcome Codes of Sampled GQs for the U.S. and P.R.**

Country	Outcome Code	Outcome Code Description	Total GQs (2006)	Number of GQs (2006)	Percent of GQs (2006)	Total GQs (2007)	Number of GQs (2007)	Percent of GQs (2007)	Total GQs (2008)	Number of GQs (2008)	Percent of GQs (2008)
United States	801	Completed Updating and Sampling	18,130	13,875	76.5	17,914	13,497	75.3	17,823	13,610	76.4
	811	GQ Refusal - respondent feels can't comply due to legal restrictions		18	0.1		9	0.1		8	0.0
	814	Unable to Locate GQ		1	0.0		2	0.0		0	0.0
	818	GQ Refusal – all other non-legal issue reasons		45	0.2		28	0.2		25	0.1
	819	Other Type A GQ		22	0.1		5	0.0		4	0.0
	840	GQ No Longer Exists		849	4.7		890	5.0		928	5.2
	841	GQ Converted to HU(s)		1,022	5.6		1,290	7.2		1,049	5.9
	842	Domestic Violence Shelters		22	0.1		16	0.1		17	0.1
	843	No Residents in GQ		1,639	9.0		1,674	9.3		1,694	9.5
	844	GQ Out of Scope		637	3.5		503	2.8		488	2.7
Puerto Rico	801	Completed Updating and Sampling	91	70	76.9	89	67	75.3	89	62	69.7
	811	GQ Refusal - respondent feels can't comply due to legal restrictions		0	0.0		0	0.0		0	0.0
	814	Unable to Locate GQ		0	0.0		0	0.0		0	0.0
	818	GQ Refusal – all other non-legal issue reasons		0	0.0		0	0.0		0	0.0
	819	Other Type A GQ		0	0.0		0	0.0		0	0.0
	840	GQ No Longer Exists		9	9.9		14	15.7		18	20.2
	841	GQ Converted to HU(s)		2	2.2		1	1.1		1	1.1
	842	Domestic Violence Shelters		0	0.0		0	0.0		0	0.0
	843	No Residents in GQ		4	4.4		1	1.1		2	2.2
	844	GQ Out of Scope		6	6.6		6	6.7		6	6.7

**Table 4. 2006-2008 Distribution of GQ Level Outcome Codes of Sampled GQs by State**

State	Outcome Code	Outcome Code Description	Total GQs (2006)	Number of GQs (2006)	Percent of GQs (2006)	Total GQs (2007)	Number of GQs (2007)	Percent of GQs (2007)	Total GQs (2008)	Number of GQs (2008)	Percent of GQs (2008)
Alabama	801	Completed Updating and Sampling	271	206	76.0	260	212	81.5	249	203	81.5
	818	GQ Refusal – all other non-legal issue reasons		1	0.4		0	0.0		2	0.8
	840	GQ No Longer Exists		14	5.2		15	5.8		16	6.4
	841	GQ Converted to HU(s)		17	6.3		9	3.5		6	2.4
	843	No Residents in GQ		28	10.3		17	6.5		18	7.2
	844	GQ Out of Scope		5	1.9		7	2.7		4	1.6
Alaska	801	Completed Updating and Sampling	51	36	70.6	53	37	69.8	100	75	75.0
	814	Unable to Locate GQ		0	0.0		1	1.9		0	0.0
	818	GQ Refusal – all other non-legal issue reasons		1	2.0		0	0.0		0	0.0
	819	Other Type A GQ		2	3.9		0	0.0		0	0.0
	840	GQ No Longer Exists		2	3.9		6	11.3		2	2.0
	841	GQ Converted to HU(s)		5	9.8		5	9.4		6	6.0
	843	No Residents in GQ		4	7.8		3	5.7		11	11.0
	844	GQ Out of Scope		1	2.0		1	1.9		6	6.0
Arizona	801	Completed Updating and Sampling	225	158	70.2	239	178	74.5	238	181	76.1
	811	GQ Refusal - respondent feels can't comply due to legal restrictions		0	0.0		1	0.4		1	0.4
	818	GQ Refusal – all other non-legal issue reasons		1	0.4		1	0.4		0	0.0
	840	GQ No Longer Exists		19	8.4		15	6.3		11	4.6
	841	GQ Converted to HU(s)		25	11.1		20	8.4		16	6.7
	843	No Residents in GQ		17	7.6		11	4.6		20	8.4
	844	GQ Out of Scope		5	2.2		13	5.4		9	3.8
Arkansas	801	Completed Updating and Sampling	179	150	83.8	177	136	76.8	170	136	80.0
	840	GQ No Longer Exists		4	2.2		8	4.5		10	5.9
	841	GQ Converted to HU(s)		3	1.7		5	2.8		7	4.1
	842	Domestic Violence Shelters		1	0.6		1	0.6		0	0.0
	843	No Residents in GQ		14	7.8		19	10.7		11	6.5
	844	GQ Out of Scope		7	3.9		8	4.5		6	3.5
California	801	Completed Updating and Sampling	1,762	1,278	72.5	1,739	1,238	71.2	1,665	1,224	73.5
	811	GQ Refusal - respondent feels can't comply due to legal restrictions		1	0.1		0	0.0		0	0.0
	818	GQ Refusal – all other non-legal issue reasons		5	0.3		8	0.5		1	0.1
	819	Other Type A GQ		0	0.0		1	0.1		2	0.1
	840	GQ No Longer Exists		64	3.6		83	4.8		86	5.2
	841	GQ Converted to HU(s)		166	9.4		199	11.4		168	10.1
	842	Domestic Violence Shelters		4	0.2		3	0.2		6	0.4
	843	No Residents in GQ		147	8.3		138	7.9		112	6.7
	844	GQ Out of Scope		97	5.5		69	4.0		66	4.0

**Table 4 (cont). 2006-2008 Distribution of GQ Level Outcome Codes of Sampled GQs by State**

State	Outcome Code	Outcome Code Description	Total GQs (2006)	Number of GQs (2006)	Percent of GQs (2006)	Total GQs (2007)	Number of GQs (2007)	Percent of GQs (2007)	Total GQs (2008)	Number of GQs (2008)	Percent of GQs (2008)
Colorado	801	Completed Updating and Sampling	249	194	77.9	248	190	76.6	238	177	74.4
	811	GQ Refusal – respondent feels can't comply due to legal restrictions		0	0.0		0	0.0		1	0.4
	840	GQ No Longer Exists		18	7.2		10	4.0		19	8.0
	841	GQ Converted to HU(s)		15	6.0		18	7.3		13	5.5
	842	Domestic Violence Shelters		0	0.0		0	0.0		1	0.4
	843	No Residents in GQ		18	7.2		20	8.1		25	10.5
	844	GQ Out of Scope		4	1.6		10	4.0		2	0.8
Connecticut	801	Completed Updating and Sampling	260	230	88.5	258	217	84.1	254	214	84.3
	811	GQ Refusal – respondent feels can't comply due to legal restrictions		2	0.8		1	0.4		1	0.4
	818	GQ Refusal – all other non-legal issue reasons		1	0.4		0	0.0		1	0.4
	840	GQ No Longer Exists		7	2.7		5	1.9		7	2.8
	841	GQ Converted to HU(s)		4	1.5		8	3.1		7	2.8
	843	No Residents in GQ		14	5.4		24	9.3		21	8.3
	844	GQ Out of Scope		2	0.8		3	1.2		3	1.2
Delaware	801	Completed Updating and Sampling	52	44	84.6	53	39	73.6	75	59	78.7
	818	GQ Refusal – all other non-legal issue reasons		0	0.0		1	1.9		0	0.0
	840	GQ No Longer Exists		1	1.9		2	3.8		6	8.0
	841	GQ Converted to HU(s)		3	5.8		2	3.8		0	0.0
	843	No Residents in GQ		2	3.9		7	13.2		10	13.3
	844	GQ Out of Scope		2	3.9		2	3.8		0	0.0
District of Columbia	801	Completed Updating and Sampling	83	60	72.3	80	51	63.8	95	63	66.3
	811	GQ Refusal - respondent feels can't comply due to legal restrictions		1	1.2		0	0.0		0	0.0
	840	GQ No Longer Exists		3	3.6		2	2.5		7	7.4
	841	GQ Converted to HU(s)		2	2.4		12	15.0		1	1.1
	843	No Residents in GQ		15	18.1		11	13.8		20	21.1
	844	GQ Out of Scope		2	2.4		4	5.0		4	4.2
Florida	801	Completed Updating and Sampling	879	648	73.7	867	608	70.1	841	610	72.5
	818	GQ Refusal – all other non-legal issue reasons		1	0.1		0	0.0		0	0.0
	840	GQ No Longer Exists		33	3.8		53	6.1		51	6.1
	841	GQ Converted to HU(s)		89	10.1		109	12.6		91	10.8
	842	Domestic Violence Shelters		2	0.2		1	0.1		1	0.1
	843	No Residents in GQ		65	7.4		51	5.9		53	6.3
	844	GQ Out of Scope		41	4.7		45	5.2		35	4.2

**Table 4 (cont). 2006-2008 Distribution of GQ Level Outcome Codes of Sampled GQs by State**

State	Outcome Code	Outcome Code Description	Total GQs (2006)	Number of GQs (2006)	Percent of GQs (2006)	Total GQs (2007)	Number of GQs (2007)	Percent of GQs (2007)	Total GQs (2008)	Number of GQs (2008)	Percent of GQs (2008)
Georgia	801	Completed Updating and Sampling	535	398	74.4	522	381	73.0	491	376	76.6
	818	GQ Refusal – all other non-legal issue reasons		0	0.0		2	0.4		0	0.0
	840	GQ No Longer Exists		26	4.9		37	7.1		26	5.3
	841	GQ Converted to HU(s)		24	4.5		28	5.4		26	5.3
	842	Domestic Violence Shelters		1	0.2		0	0.0		0	0.0
	843	No Residents in GQ		60	11.2		51	9.8		42	8.6
	844	GQ Out of Scope		26	4.9		23	4.4		21	4.3
Hawaii	801	Completed Updating and Sampling	93	67	72.0	91	51	56.0	103	67	65.0
	818	GQ Refusal – all other non-legal issue reasons		0	0.0		0	0.0		1	1.0
	840	GQ No Longer Exists		5	5.4		9	9.9		9	8.7
	841	GQ Converted to HU(s)		7	7.5		12	13.2		3	2.9
	843	No Residents in GQ		10	10.8		16	17.6		14	13.6
	844	GQ Out of Scope		4	4.3		3	3.3		9	8.7
Idaho	801	Completed Updating and Sampling	74	48	64.9	71	44	62.0	94	64	68.1
	840	GQ No Longer Exists		3	4.1		4	5.6		6	6.4
	841	GQ Converted to HU(s)		7	9.5		9	12.7		12	12.8
	843	No Residents in GQ		10	13.5		8	11.3		7	7.5
	844	GQ Out of Scope		6	8.1		6	8.5		5	5.3
Illinois	801	Completed Updating and Sampling	712	562	78.9	682	530	77.7	655	508	77.6
	818	GQ Refusal – all other non-legal issue reasons		0	0.0		0	0.0		1	0.2
	840	GQ No Longer Exists		32	4.5		35	5.1		43	6.6
	841	GQ Converted to HU(s)		26	3.7		29	4.3		25	3.8
	842	Domestic Violence Shelters		0	0.0		1	0.2		0	0.0
	843	No Residents in GQ		72	10.1		72	10.6		69	10.5
	844	GQ Out of Scope		20	2.8		15	2.2		9	1.4
Indiana	801	Completed Updating and Sampling	422	351	83.2	424	316	74.5	402	327	81.3
	840	GQ No Longer Exists		13	3.1		13	3.1		6	1.5
	841	GQ Converted to HU(s)		9	2.1		14	3.3		13	3.2
	843	No Residents in GQ		38	9.0		68	16.0		51	12.7
	844	GQ Out of Scope		11	2.6		13	3.1		5	1.2
Iowa	801	Completed Updating and Sampling	256	197	77.0	245	194	79.2	239	187	78.2
	840	GQ No Longer Exists		14	5.5		7	2.9		10	4.2
	841	GQ Converted to HU(s)		14	5.5		18	7.4		18	7.5
	843	No Residents in GQ		20	7.8		19	7.8		19	7.9
	844	GQ Out of Scope		11	4.3		7	2.9		5	2.1

**Table 4 (cont). 2006-2008 Distribution of GQ Level Outcome Codes of Sampled GQs by State**

State	Outcome Code	Outcome Code Description	Total GQs (2006)	Number of GQs (2006)	Percent of GQs (2006)	Total GQs (2007)	Number of GQs (2007)	Percent of GQs (2007)	Total GQs (2008)	Number of GQs (2008)	Percent of GQs (2008)
Kansas	801	Completed Updating and Sampling	193	151	78.2	193	136	70.5	188	145	77.1
	840	GQ No Longer Exists		13	6.7		20	10.4		11	5.9
	841	GQ Converted to HU(s)		11	5.7		9	4.7		8	4.3
	843	No Residents in GQ		11	5.7		22	11.4		14	7.4
	844	GQ Out of Scope		7	3.6		6	3.1		10	5.3
Kentucky	801	Completed Updating and Sampling	289	218	75.4	287	227	79.1	281	217	77.2
	840	GQ No Longer Exists		15	5.2		11	3.8		10	3.6
	841	GQ Converted to HU(s)		11	3.8		21	7.3		15	5.3
	842	Domestic Violence Shelters		0	0.0		1	0.4		0	0.0
	843	No Residents in GQ		34	11.8		21	7.3		31	11.0
	844	GQ Out of Scope		11	3.8		6	2.1		8	2.8
Louisiana	801	Completed Updating and Sampling	321	243	75.7	316	237	75.0	306	218	71.2
	811	GQ Refusal – respondent feels can't comply due to legal restrictions		1	0.3		0	0.0		0	0.0
	819	Other Type A GQ		1	0.3		0	0.0		0	0.0
	840	GQ No Longer Exists		22	6.9		21	6.7		37	12.1
	841	GQ Converted to HU(s)		7	2.2		13	4.1		5	1.6
	842	Domestic Violence Shelters		0	0.0		0	0.0		2	0.7
	843	No Residents in GQ		35	10.9		34	10.8		33	10.8
	844	GQ Out of Scope		12	3.7		11	3.5		11	3.6
Maine	801	Completed Updating and Sampling	97	69	71.1	95	63	66.3	113	81	71.7
	811	GQ Refusal – respondent feels can't comply due to legal restrictions		1	1.0		0	0.0		0	0.0
	840	GQ No Longer Exists		3	3.1		8	8.4		8	7.1
	841	GQ Converted to HU(s)		10	10.3		14	14.7		11	9.7
	843	No Residents in GQ		7	7.2		8	8.4		11	9.7
	844	GQ Out of Scope		7	7.2		2	2.1		2	1.8
Maryland	801	Completed Updating and Sampling	314	237	75.5	312	228	73.1	299	214	71.6
	811	GQ Refusal – respondent feels can't comply due to legal restrictions		1	0.3		0	0.0		0	0.0
	818	GQ Refusal – all other non-legal issue reasons		1	0.3		0	0.0		0	0.0
	840	GQ No Longer Exists		11	3.5		21	6.7		6	2.0
	841	GQ Converted to HU(s)		15	4.8		18	5.8		19	6.4
	842	Domestic Violence Shelters		1	0.3		0	0.0		1	0.3
	843	No Residents in GQ		36	11.5		35	11.2		39	13.0
	844	GQ Out of Scope		12	3.8		10	3.2		20	6.7



**Table 4 (cont). 2006-2008 Distribution of GQ Level Outcome Codes of Sampled GQs by State**

State	Outcome Code	Outcome Code Description	Total GQs (2006)	Number of GQs (2006)	Percent of GQs (2006)	Total GQs (2007)	Number of GQs (2007)	Percent of GQs (2007)	Total GQs (2008)	Number of GQs (2008)	Percent of GQs (2008)
Massachusetts	801	Completed Updating and Sampling	540	409	75.7	538	404	75.1	511	402	78.7
	818	GQ Refusal – all other non-legal issue reasons		3	0.6		2	0.4		1	0.2
	819	Other Type A GQ		5	0.9		1	0.2		0	0.0
	840	GQ No Longer Exists		32	5.9		26	4.8		25	4.9
	841	GQ Converted to HU(s)		15	2.8		40	7.4		18	3.5
	843	No Residents in GQ		68	12.6		58	10.8		59	11.5
	844	GQ Out of Scope		8	1.5		7	1.3		6	1.2
Michigan	801	Completed Updating and Sampling	608	443	72.9	610	429	70.3	606	424	70.0
	818	GQ Refusal – all other non-legal issue reasons		3	0.5		1	0.2		0	0.0
	840	GQ No Longer Exists		38	6.3		39	6.4		52	8.6
	841	GQ Converted to HU(s)		42	6.9		37	6.1		36	5.9
	842	Domestic Violence Shelters		0	0.0		1	0.2		0	0.0
	843	No Residents in GQ		62	10.2		90	14.8		88	14.5
	844	GQ Out of Scope		20	3.3		13	2.1		6	1.0
Minnesota	801	Completed Updating and Sampling	344	271	78.8	341	268	78.6	331	263	79.5
	811	GQ Refusal – respondent feels can't comply due to legal restrictions		0	0.0		0	0.0		1	0.3
	840	GQ No Longer Exists		10	2.9		10	2.9		9	2.7
	841	GQ Converted to HU(s)		23	6.7		25	7.3		21	6.3
	842	Domestic Violence Shelters		0	0.0		0	0.0		1	0.3
	843	No Residents in GQ		29	8.4		0	8.8		24	7.3
	844	GQ Out of Scope		11	3.2		30	2.4		12	3.6
Mississippi	801	Completed Updating and Sampling	231	160	69.3	228	168	73.7	218	175	80.3
	811	GQ Refusal – respondent feels can't comply due to legal restrictions		1	0.4		0	0.0		0	0.0
	840	GQ No Longer Exists		26	11.3		23	10.1		16	7.3
	841	GQ Converted to HU(s)		8	3.5		8	3.5		4	1.8
	842	Domestic Violence Shelters		0	0.0		1	0.4		0	0.0
	843	No Residents in GQ		28	12.1		22	9.6		18	8.3
	844	GQ Out of Scope		8	3.5		6	2.6		5	2.3
Missouri	801	Completed Updating and Sampling	383	315	82.2	386	304	78.8	371	305	82.2
	811	GQ Refusal – respondent feels can't comply due to legal restrictions		1	0.3		0	0.0		0	0.0
	818	GQ Refusal – all other non-legal issue reasons		0	0.0		0	0.0		3	0.8
	840	GQ No Longer Exists		23	6.0		15	3.9		14	3.8
	841	GQ Converted to HU(s)		19	5.0		30	7.8		22	5.9
	842	Domestic Violence Shelters		2	0.5		0	0.0		0	0.0
	843	No Residents in GQ		20	5.2		33	8.5		23	6.2
	844	GQ Out of Scope		3	0.8		4	1.0		4	1.1

**Table 4 (cont). 2006-2008 Distribution of GQ Level Outcome Codes of Sampled GQs by State**

State	Outcome Code	Outcome Code Description	Total GQs (2006)	Number of GQs (2006)	Percent of GQs (2006)	Total GQs (2007)	Number of GQs (2007)	Percent of GQs (2007)	Total GQs (2008)	Number of GQs (2008)	Percent of GQs (2008)
Montana	801	Completed Updating and Sampling	68	53	77.9	63	44	69.8	105	77	73.3
	840	GQ No Longer Exists		3	4.4		3	4.8		4	3.8
	841	GQ Converted to HU(s)		4	5.9		6	9.5		13	12.4
	843	No Residents in GQ		5	7.4		7	11.1		9	8.6
	844	GQ Out of Scope		3	4.4		3	4.8		2	1.9
Nebraska	801	Completed Updating and Sampling	131	110	84.0	128	107	83.6	124	103	83.1
	818	GQ Refusal – all other non-legal issue reasons		0	0.0		0	0.0		1	0.8
	840	GQ No Longer Exists		6	4.6		5	3.9		7	5.6
	841	GQ Converted to HU(s)		4	3.1		7	5.5		1	0.8
	843	No Residents in GQ		9	6.9		7	5.5		9	7.3
	844	GQ Out of Scope		2	1.5		2	1.6		3	2.4
Nevada	801	Completed Updating and Sampling	72	59	81.9	73	57	78.1	95	75	78.9
	840	GQ No Longer Exists		9	12.5		3	4.1		10	10.5
	841	GQ Converted to HU(s)		1	1.4		3	4.1		2	2.1
	843	No Residents in GQ		3	4.2		7	9.6		6	6.3
	844	GQ Out of Scope		0	0.0		3	4.1		2	2.1
New Hampshire	801	Completed Updating and Sampling	95	73	76.8	92	72	78.3	116	88	75.9
	840	GQ No Longer Exists		4	4.2		2	2.2		4	3.5
	841	GQ Converted to HU(s)		6	6.3		7	7.6		10	8.6
	842	Domestic Violence Shelters		0	0.0		1	1.1		0	0.0
	843	No Residents in GQ		11	11.6		7	7.6		13	11.2
	844	GQ Out of Scope		1	1.1		3	3.3		1	0.9
New Jersey	801	Completed Updating and Sampling	489	389	79.6	487	377	77.4	480	371	77.3
	811	GQ Refusal – respondent feels can't comply due to legal restrictions		1	0.2		0	0.0		0	0.0
	818	GQ Refusal – all other non-legal issue reasons		0	0.0		3	0.6		0	0.0
	840	GQ No Longer Exists		20	4.1		27	5.5		24	5.0
	841	GQ Converted to HU(s)		18	3.7		28	5.7		28	5.8
	842	Domestic Violence Shelters		1	0.2		0	0.0		0	0.0
	843	No Residents in GQ		38	7.8		36	7.4		46	9.6
	844	GQ Out of Scope		22	4.5		16	3.3		11	2.3

**Table 4 (cont). 2006-2008 Distribution of GQ Level Outcome Codes of Sampled GQs by State**

State	Outcome Code	Outcome Code Description	Total GQs (2006)	Number of GQs (2006)	Percent of GQs (2006)	Total GQs (2007)	Number of GQs (2007)	Percent of GQs (2007)	Total GQs (2008)	Number of GQs (2008)	Percent of GQs (2008)
New Mexico	801	Completed Updating and Sampling	91	71	78.0	90	61	67.8	102	77	75.5
	840	GQ No Longer Exists		8	8.8		11	12.2		10	9.8
	841	GQ Converted to HU(s)		6	6.6		3	3.3		4	3.9
	843	No Residents in GQ		6	6.6		5	5.6		8	7.8
	844	GQ Out of Scope		0	0.0		10	11.1		3	2.9
New York	801	Completed Updating and Sampling	1,301	1,076	82.7	1,275	1,041	81.6	1,238	1,010	81.6
	811	GQ Refusal – respondent feels can't comply due to legal restrictions		3	0.2		6	0.5		2	0.2
	818	GQ Refusal – all other non-legal issue reasons		7	0.5		6	0.5		7	0.6
	819	Other Type A GQ		4	0.3		1	0.1		0	0.0
	840	GQ No Longer Exists		37	2.8		43	3.4		40	3.2
	841	GQ Converted to HU(s)		63	4.8		58	4.5		45	3.6
	842	Domestic Violence Shelters		5	0.4		2	0.2		1	0.1
	843	No Residents in GQ		72	5.5		97	7.6		111	9.0
844	GQ Out of Scope	34	2.6	21	1.6	22	1.8				
North Carolina	801	Completed Updating and Sampling	634	472	74.5	640	478	74.7	620	470	75.8
	818	GQ Refusal – all other non-legal issue reasons		1	0.2		1	0.2		0	0.0
	840	GQ No Longer Exists		31	4.9		29	4.5		27	4.4
	841	GQ Converted to HU(s)		38	6.0		55	8.6		39	6.3
	842	Domestic Violence Shelters		2	0.3		1	0.2		0	0.0
	843	No Residents in GQ		65	10.3		70	10.9		72	11.6
844	GQ Out of Scope	25	3.9	6	0.9	12	1.9				
North Dakota	801	Completed Updating and Sampling	62	53	85.5	61	51	83.6	109	89	81.7
	840	GQ No Longer Exists		0	0.0		0	0.0		2	1.8
	841	GQ Converted to HU(s)		3	4.8		3	4.9		6	5.5
	843	No Residents in GQ		5	8.1		6	9.8		9	8.3
	844	GQ Out of Scope		1	1.6		1	1.6		3	2.8
Ohio	801	Completed Updating and Sampling	671	520	77.5	662	523	79.0	649	488	75.2
	818	GQ Refusal – all other non-legal issue reasons		3	0.5		0	0.0		0	0.0
	840	GQ No Longer Exists		28	4.2		28	4.2		39	6.0
	841	GQ Converted to HU(s)		22	3.3		23	3.5		27	4.2
	842	Domestic Violence Shelters		2	0.3		0	0.0		0	0.0
	843	No Residents in GQ		78	11.6		77	11.6		78	12.0
	844	GQ Out of Scope		18	2.7		11	1.7		17	2.6

**Table 4 (cont). 2006-2008 Distribution of GQ Level Outcome Codes of Sampled GQs by State**

State	Outcome Code	Outcome Code Description	Total GQs (2006)	Number of GQs (2006)	Percent of GQs (2006)	Total GQs (2007)	Number of GQs (2007)	Percent of GQs (2007)	Total GQs (2008)	Number of GQs (2008)	Percent of GQs (2008)
Oklahoma	801	Completed Updating and Sampling	260	208	80.0	252	206	81.7	247	205	83.0
	840	GQ No Longer Exists		16	6.2		7	2.8		5	2.0
	841	GQ Converted to HU(s)		10	3.9		13	5.2		13	5.3
	843	No Residents in GQ		20	7.7		15	6.0		12	4.9
	844	GQ Out of Scope		6	2.3		11	4.4		12	4.9
Oregon	801	Completed Updating and Sampling	197	139	70.6	205	132	64.4	204	141	69.1
	818	GQ Refusal - respondent feels can't comply due to legal restrictions		1	0.5		0	0.0		0	0.0
	840	GQ No Longer Exists		13	6.6		12	5.9		12	5.9
	841	GQ Converted HU(s)		19	9.6		32	15.6		22	10.8
	842	Domestic Violence Shelters		0	0.0		0	0.0		1	0.5
	843	No Residents in GQ		13	6.6		26	12.7		23	11.3
Pennsylvania	801	Completed Updating and Sampling	1,102	815	74.0	1,093	794	72.6	1,048	770	73.5
	818	GQ Refusal – all other non-legal issue reasons		2	0.2		0	0.0		1	0.1
	840	GQ No Longer Exists		49	4.5		54	4.9		69	6.6
	841	GQ Converted to HU(s)		62	5.6		104	9.5		75	7.2
	842	Domestic Violence Shelters		1	0.1		0	0.0		2	0.2
	843	No Residents in GQ		121	11.0		109	10.0		101	9.6
	844	GQ Out of Scope		52	4.7		32	2.9		30	2.9
Rhode Island	801	Completed Updating and Sampling	99	87	87.9	97	77	79.4	98	78	79.6
	840	GQ No Longer Exists		1	1.0		6	6.2		4	4.1
	841	GQ Converted to HU(s)		1	1.0		1	1.0		2	2.0
	843	No Residents in GQ		8	8.1		12	12.4		13	13.3
	844	GQ Out of Scope		2	2.0		1	1.0		1	1.0
South Carolina	801	Completed Updating and Sampling	323	249	77.1	323	255	78.9	316	252	79.7
	818	GQ Refusal – all other non-legal issue reasons		1	0.3		0	0.0		0	0.0
	840	GQ No Longer Exists		21	6.5		20	6.2		10	3.2
	841	GQ Converted to HU(s)		13	4.0		17	5.3		14	4.4
	843	No Residents in GQ		32	9.9		28	8.7		31	9.8
	844	GQ Out of Scope		7	2.2		3	0.9		9	2.8

**Table 4 (cont). 2006-2008 Distribution of GQ Level Outcome Codes of Sampled GQs by State**

State	Outcome Code	Outcome Code Description	Total GQs (2006)	Number of GQs (2006)	Percent of GQs (2006)	Total GQs (2007)	Number of GQs (2007)	Percent of GQs (2007)	Total GQs (2008)	Number of GQs (2008)	Percent of GQs (2008)
South Dakota	801	Completed Updating and Sampling	72	61	84.7	71	57	80.3	105	82	78.1
	840	GQ No Longer Exists		7	9.7		1	1.4		4	3.8
	841	GQ Converted to HU(s)		2	2.8		5	7.0		8	7.6
	843	No Residents in GQ		2	2.8		7	9.9		10	9.5
	844	GQ Out of Scope		0	0.0		1	1.4		1	1.0
Tennessee	801	Completed Updating and Sampling	357	281	78.7	350	270	77.1	343	269	78.4
	818	GQ Refusal – all other non-legal issue reasons		1	0.3		0	0.0		0	0.0
	840	GQ No Longer Exists		13	3.6		19	5.4		23	6.7
	841	GQ Converted to HU(s)		22	6.2		27	7.7		15	4.4
	842	Domestic Violence Shelters		0	0.0		1	0.3		0	0.0
	843	No Residents in GQ		32	9.0		27	7.7		30	8.7
Texas	801	Completed Updating and Sampling	1,183	912	77.1	1,130	891	78.8	1,097	857	78.1
	811	GQ Refusal – respondent feels can't comply due to legal restrictions		2	0.2		1	0.1		0	0.0
	818	GQ Refusal – all other non-legal issue reasons		3	0.3		2	0.2		3	0.3
	819	Other Type A GQ		2	0.2		2	0.2		0	0.0
	840	GQ No Longer Exists		65	5.5		40	3.5		57	5.2
	841	GQ Converted to HU(s)		49	4.1		67	5.9		56	5.1
	842	Domestic Violence Shelters		0	0.0		2	0.2		1	0.1
	843	No Residents in GQ		96	8.1		87	7.7		88	8.0
	844	GQ Out of Scope		54	4.6		38	3.4		35	3.2
Utah	801	Completed Updating and Sampling	102	79	77.5	99	71	71.7	112	76	67.9
	811	GQ Refusal – respondent feels can't comply due to legal restrictions		1	1.0		0	0.0		0	0.0
	818	GQ Refusal – all other non-legal issue reasons		1	1.0		1	1.0		0	0.0
	840	GQ No Longer Exists		3	2.9		6	6.1		3	2.7
	841	GQ Converted to HU(s)		12	11.8		10	10.1		11	9.8
	843	No Residents in GQ		6	5.9		8	8.1		14	12.5
Vermont	801	Completed Updating and Sampling	55	39	70.9	53	43	81.1	102	78	76.5
	811	GQ Refusal – respondent feels can't comply due to legal restrictions		1	1.8		0	0.0		0	0.0
	818	GQ Refusal – all other non-legal issue reasons		1	1.8		0	0.0		1	1.0
	840	GQ No Longer Exists		2	3.6		0	0.0		3	2.9
	841	GQ Converted to HU(s)		3	5.5		2	3.8		4	3.9
	843	No Residents in GQ		8	14.5		7	13.2		15	14.7
	844	GQ Out of Scope		1	1.8		1	1.9		1	1.0

**Table 4 (cont). 2006-2008 Distribution of GQ Level Outcome Codes of Sampled GQs by State**

State	Outcome Code	Outcome Code Description	Total GQs (2006)	Number of GQs (2006)	Percent of GQs (2006)	Total GQs (2007)	Number of GQs (2007)	Percent of GQs (2007)	Total GQs (2008)	Number of GQs (2008)	Percent of GQs (2008)
Virginia	801	Completed Updating and Sampling	491	354	72.1	504	365	72.4	498	360	72.3
	811	GQ Refusal – respondent feels can't comply due to legal restrictions		0	0.0		0	0.0		1	0.2
	814	Unable to Locate GQ		1	0.2		0	0.0		0	0.0
	818	GQ Refusal – all other non-legal issue reasons		1	0.2		0	0.0		0	0.0
	819	Other Type A GQ		4	0.8		0	0.0		0	0.0
	840	GQ No Longer Exists		28	5.7		36	7.1		25	5.0
	841	GQ Converted to HU(s)		20	4.1		35	6.9		32	6.4
	843	No Residents in GQ		68	13.8		57	11.3		64	12.9
	844	GQ Out of Scope		15	3.1		11	2.2		16	3.2
Washington	801	Completed Updating and Sampling	320	223	69.7	323	229	70.9	308	229	74.4
	811	GQ Refusal - respondent feels can't comply due to legal restrictions		1	0.3		0	0.0		0	0.0
	814	Unable to Locate GQ		0	0.0		1	0.3		0	0.0
	818	GQ Refusal – all other non-legal issue reasons		6	1.9		0	0.0		2	0.7
	819	Other Type A GQ		4	1.3		0	0.0		2	0.7
	840	GQ No Longer Exists		13	4.1		19	5.9		14	4.6
	841	GQ Converted to HU(s)		31	9.7		37	11.5		25	8.1
	843	No Residents in GQ		30	9.4		33	10.2		27	8.8
	844	GQ Out of Scope		12	3.8		4	1.2		9	2.9
West Virginia	801	Completed Updating and Sampling	106	76	71.7	105	84	80.0	103	82	79.6
	840	GQ No Longer Exists		10	9.4		7	6.7		4	3.9
	841	GQ Converted to HU(s)		9	8.5		4	3.8		3	2.9
	843	No Residents in GQ		6	5.7		8	7.6		13	12.6
	844	GQ Out of Scope		5	4.7		2	1.9		1	1.0
Wisconsin	801	Completed Updating and Sampling	389	304	78.1	387	296	76.5	379	306	80.7
	840	GQ No Longer Exists		9	2.3		12	3.1		12	3.2
	841	GQ Converted to HU(s)		24	6.2		30	7.8		19	5.0
	843	No Residents in GQ		39	10.0		41	10.6		39	10.3
	844	GQ Out of Scope		13	3.3		8	2.1		3	0.8
Wyoming	801	Completed Updating and Sampling	37	29	78.4	36	30	83.3	92	62	67.4
	811	GQ Refusal - respondent feels can't comply due to legal restrictions		0	0.0		0	0.0		1	1.1
	840	GQ No Longer Exists		2	5.4		2	5.6		13	14.1
	841	GQ Converted to HU(s)		3	8.1		1	2.8		4	4.4
	843	No Residents in GQ		2	5.4		2	5.6		10	10.9
	844	GQ Out of Scope		1	2.7		1	2.8		2	2.2

**Table 5. 2006-2008 Distribution of GQ Level Outcome Codes of Sampled GQs by Major GQ Type**

Major GQ Type Group	GQ Type Description	Outcome Code	Outcome Code Description	Total GQs (2006)	Number of GQs (2006)	Percent of GQs (2006)	Total GQs (2007)	Number of GQs (2007)	Percent of GQs (2007)	Total GQs (2008)	Number of GQs (2008)	Percent of GQs (2008)
1	Correctional Facilities	801	Completed Updating and Sampling	3,406	3,212	94.3	3,396	3,234	95.2	3,482	3,329	95.6
		811	GQ Refusal - respondent feels can't comply due to legal restrictions		1	0.0		1	0.0		1	0.0
		814	Unable to locate GQ		0	0.0		1	0.0		0	0.0
		818	GQ Refusal – all other non-legal issue reasons		7	0.2		1	0.0		0	0.0
		819	Other Type A GQ		5	0.1		1	0.0		1	0.0
		840	GQ No Longer Exists		80	2.3		77	2.3		72	2.1
		841	GQ Converted to HU(s)		7	0.2		1	0.0		2	0.1
		843	No Residents in GQ		57	1.7		41	1.2		43	1.2
		844	GQ Out of Scope		37	1.1		39	1.1		34	1.0
2	Juvenile Detention Centers	801	Completed Updating and Sampling	324	260	80.23	316	255	80.7	330	251	76.1
		818	GQ Refusal – all other non-legal issue reasons		1	0.3		1	0.3		0	0.0
		819	Other Type A GQ		1	0.3		0	0.0		0	0.0
		840	GQ No Longer Exists		31	9.6		25	7.9		40	12.1
		841	GQ Converted to HU(s)		2	0.6		5	1.6		5	1.5
		842	Domestic Violence Shelters		0	0.0		0	0.0		1	0.3
		843	No Residents in GQ		23	7.1		18	5.7		24	7.3
		844	GQ Out of Scope		6	1.9		12	3.8		9	2.7
3	Nursing Homes	801	Completed Updating and Sampling	4,376	3,729	85.2	4,280	3,647	85.2	4,256	3,726	87.5
		811	GQ Refusal - respondent feels can't comply due to legal restrictions		1	0.0		0	0.0		1	0.0
		818	GQ Refusal – all other non-legal issue reasons		2	0.0		2	0.0		1	0.0
		819	Other Type A GQ		1	0.0		1	0.0		0	0.0
		840	GQ No Longer Exists		176	4.0		173	4.0		167	3.9
		841	GQ Converted to HU(s)		264	6.0		367	8.6		291	6.8
		842	Domestic Violence Shelters		1	0.0		0	0.0		1	0.0
		843	No Residents in GQ		45	1.0		29	0.7		22	0.5
		844	GQ Out of Scope		157	3.6		61	1.4		47	1.1

**Table 5 (cont). 2006-2008 Distribution of GQ Level Outcome Codes of Sampled GQs by Major GQ Type**

Major GQ Type Group	GQ Type Description	Outcome Code	Outcome Code Description	Total GQs (2006)	Number of GQs (2006)	Percent of GQs (2006)	Total GQs (2007)	Number of GQs (2007)	Percent of GQs (2007)	Total GQs (2008)	Number of GQs (2008)	Percent of GQs (2008)
4	Other Long-Term Care Facilities	801	Completed Updating and Sampling	614	398	64.8	578	377	65.2	474	307	64.8
		811	GQ Refusal - respondent feels can't comply due to legal restrictions		3	0.5		1	0.2		0	0.0
		818	GQ Refusal – all other non-legal issue reasons		1	0.2		2	0.3		0	0.0
		840	GQ No Longer Exists		49	8.0		45	7.8		45	9.5
		841	GQ Converted to HU(s)		25	4.1		24	4.2		19	4.0
		843	No Residents in GQ		92	15.0		72	12.5		61	12.9
		844	GQ Out of Scope		46	7.5		57	9.9		42	8.9
5	College Dormitories	801	Completed Updating and Sampling	4,981	3,609	72.5	4,921	3,383	68.7	4,872	3,353	68.8
		811	GQ Refusal - respondent feels can't comply due to legal restrictions		2	0.0		2	0.0		2	0.0
		818	GQ Refusal – all other non-legal issue reasons		6	0.1		1	0.0		7	0.1
		819	Other Type A GQ		6	0.1		0	0.0		1	0.0
		840	GQ No Longer Exists		123	2.5		129	2.6		153	3.1
		841	GQ Converted to HU(s)		105	2.1		160	3.3		81	1.7
		843	No Residents in GQ		1,081	21.7		1,170	23.8		1,211	24.9
		844	GQ Out of Scope		49	1.0		76	1.5		64	1.3
6	Military Facilities	801	Completed Updating and Sampling	833	541	64.9	841	507	60.3	790	490	62.0
		811	GQ Refusal - respondent feels can't comply due to legal restrictions		1	0.1		0	0.0		0	0.0
		814	Unable to locate GQ		1	0.1		0	0.0		0	0.0
		818	GQ Refusal – all other non-legal issue reasons		3	0.4		2	0.2		1	0.1
		819	Other Type A GQ		6	0.7		0	0.0		0	0.0
		840	GQ No Longer Exists		73	8.8		84	10.0		65	8.2
		841	GQ Converted to HU(s)		28	3.4		37	4.4		30	3.8
		843	No Residents in GQ		138	16.6		167	19.9		132	16.7
		844	GQ Out of Scope		42	5.0		44	5.2		72	9.1



**Table 5 (cont). 2006-2008 Distribution of GQ Level Outcome Codes of Sampled GQs by Major GQ Type**

Major GQ Type Group	GQ Type Description	Outcome Code	Outcome Code Description	Total GQs (2006)	Number of GQs (2006)	Percent of GQs (2006)	Total GQs (2007)	Number of GQs (2007)	Percent of GQs (2007)	Total GQs (2008)	Number of GQs (2008)	Percent of GQs (2008)
7	Homeless Shelters	801	Completed Updating and Sampling	433	294	67.9	427	269	63.0	557	311	55.8
		811	GQ Refusal - respondent feels can't comply due to legal restrictions		4	0.9		1	0.2		2	0.4
		818	GQ Refusal – all other non-legal issue reasons		6	1.4		4	0.9		7	1.3
		819	Other Type A GQ		1	0.2		0	0.0		1	0.2
		840	GQ No Longer Exists		27	6.2		39	9.1		69	12.4
		841	GQ Converted to HU(s)		31	7.2		24	5.6		63	11.3
		842	Domestic Violence Shelters		12	2.8		14	3.3		10	1.8
		843	No Residents in GQ		33	7.6		25	5.9		39	7.0
		844	GQ Out of Scope		25	5.8		51	11.9		55	9.9
8	Group Homes Intended For Adults	801	Completed Updating and Sampling	1,509	1,019	67.5	1,507	1,024	67.9	2,279	1,421	62.4
		811	GQ Refusal - respondent feels can't comply due to legal restrictions		5	0.3		3	0.2		2	0.1
		818	GQ Refusal – all other non-legal issue reasons		17	1.1		11	0.7		8	0.4
		819	Other Type A GQ		2	0.1		2	0.1		1	0.0
		840	GQ No Longer Exists		128	8.5		146	9.7		244	10.7
		841	GQ Converted to HU(s)		202	13.4		238	15.8		446	19.6
		842	Domestic Violence Shelters		2	0.1		1	0.1		5	0.2
		843	No Residents in GQ		43	2.8		25	1.7		52	2.3
		844	GQ Out of Scope		91	6.0		57	3.8		100	4.4
9	Other GQ Type	801	Completed Updating and Sampling	1,745	883	50.6	1,737	868	50.0	872	484	55.5
		811	GQ Refusal - respondent feels can't comply due to legal restrictions		1	0.1		1	0.1		0	0.0
		814	Unable to locate GQ		0	0.0		1	0.1		0	0.0
		818	GQ Refusal – all other non-legal issue reasons		2	0.1		4	0.2		1	0.1
		819	Other Type A GQ		0	0.0		1	0.1		0	0.0
		840	GQ No Longer Exists		171	9.8		186	10.7		91	10.4
		841	GQ Converted to HU(s)		360	20.6		435	25.0		113	13.0
		842	Domestic Violence Shelters		7	0.4		1	0.1		0	0.0
		843	No Residents in GQ		131	7.5		128	7.4		112	12.8
		844	GQ Out of Scope		190	10.9		112	6.4		71	8.1

**Table 6. Distribution of GQ Level Outcome Codes of Sampled GQs by Size**

Size	Outcome Code	Outcome Code Description	Total GQs (2006)	Number of GQs (2006)	Percent of GQs (2006)	Total GQs (2007)	Number of GQs (2007)	Percent of GQs (2007)	Total GQs (2008)	Number of GQs (2008)	Percent of GQs (2008)
Large	801	Completed Updating and Sampling	15,556	12,422	79.9	15,301	12,026	78.6	15,107	12,105	80.1
	811	GQ Refusal - respondent feels can't comply due to legal restrictions		15	0.1		9	0.1		8	0.1
	814	Unable to Locate GQ		1	0.0		2	0.0		0	0.0
	818	GQ Refusal – all other non-legal issue reasons		40	0.3		26	0.2		24	0.2
	819	Other Type A GQ		19	0.1		5	0.0		4	0.0
	840	GQ No Longer Exists		533	3.4		547	3.6		550	3.6
	841	GQ Converted to HU(s)		632	4.1		857	5.6		606	4.0
	842	Domestic Violence Shelters		14	0.1		8	0.1		10	0.1
	843	No Residents in GQ		1,421	9.1		1,484	9.7		1,487	9.8
844	GQ Out of Scope	459	3.0	337	2.2	313	2.1				
Small	801	Completed Updating and Sampling	2,665	1,523	57.1	2,702	1,538	56.9	2,805	1,567	55.9
	811	GQ Refusal - respondent feels can't comply due to legal restrictions		3	0.1		0	0.1		0	0.0
	814	Unable to Locate GQ		0	0.0		0	0.0		0	0.0
	818	GQ Refusal – all other non-legal issue reasons		5	0.2		2	0.1		1	0.0
	819	Other Type A GQ		3	0.1		0	0.0		0	0.0
	840	GQ No Longer Exists		325	12.2		357	13.2		396	14.1
	841	GQ Converted to HU(s)		392	14.7		434	16.1		444	15.8
	842	Domestic Violence Shelters		8	0.3		8	0.3		7	0.2
	843	No Residents in GQ		222	8.3		191	7.1		209	7.5
844	GQ Out of Scope	184	6.9	172	6.4	181	6.5				

**Table 7. 2007 and 2008 Frequency of Name Changes by State**

State	Total GQs (2007)	Number of Name Changes (2007)	Percent of Name Changes (2007)	Total GQs (2008)	Number of Name Changes (2008)	Percent of Name Changes (2008)
United States	183,328	1,407	0.77	180,919	1,166	0.64
Puerto Rico	1,180	5	0.42	1,171	20	1.71
Alabama	2,332	8	0.34	2,288	24	1.05
Alaska	878	4	0.46	878	1	0.11
Arizona	2,481	20	0.81	2,440	18	0.74
Arkansas	1,569	32	2.04	1,553	16	1.03
California	22,579	103	0.46	22,251	119	0.54
Colorado	2,486	22	0.89	2,455	19	0.77
Connecticut	2,098	12	0.57	2,081	26	1.25
Delaware	509	0	0.00	505	0	0.00
District of Columbia	706	0	0.00	695	1	0.14
Florida	7,938	27	0.34	7,755	67	0.86
Georgia	3,770	17	0.45	3,691	23	0.62
Hawaii	1,296	9	0.69	1,265	5	0.40
Idaho	845	4	0.47	832	1	0.12
Illinois	5,784	17	0.29	5,699	46	0.81
Indiana	3,570	20	0.56	3,547	31	0.87
Iowa	2,538	21	0.83	2,512	19	0.76
Kansas	1,969	25	1.27	1,939	15	0.77
Kentucky	2,626	28	1.07	2,588	10	0.39
Louisiana	3,209	7	0.22	3,161	17	0.54
Maine	1,497	13	0.87	1,471	3	0.20
Maryland	3,760	1	0.03	3,694	15	0.41
Massachusetts	5,122	41	0.80	5,050	28	0.55
Michigan	8,278	19	0.23	8,200	47	0.57
Minnesota	4,148	19	0.46	4,110	21	0.51
Mississippi	1,958	23	1.18	1,922	13	0.68
Missouri	3,748	41	1.09	3,692	24	0.65
Montana	921	2	0.22	912	3	0.33
Nebraska	1,459	29	1.99	1,445	11	0.76
Nevada	777	1	0.13	774	4	0.52
New Hampshire	1,006	1	0.10	993	7	0.71
New Jersey	5,392	31	0.58	5,338	14	0.26
New Mexico	1,096	8	0.73	1,072	8	0.75
New York	11,792	42	0.36	11,698	56	0.48
North Carolina	6,073	33	0.54	5,985	45	0.75
North Dakota	638	22	3.45	637	1	0.16
Ohio	6,625	48	0.73	6,568	49	0.75
Oklahoma	2,151	31	1.44	2,121	15	0.71

**Table 7 (cont). 2007 and 2008 Frequency of Name Changes by State**

State	Total GQs (2007)	Number of Name Changes (2007)	Percent of Name Changes (2007)	Total GQs (2008)	Number of Name Changes (2008)	Percent of Name Changes (2008)
United States	183,328	1,407	0.77	180,919	1,166	0.64
Puerto Rico	1,180	5	0.42	1,171	20	1.71
Oregon	2,945	2	0.07	2,902	19	0.66
Pennsylvania	12,066	158	1.31	11,921	57	0.48
Rhode Island	755	6	0.80	750	3	0.40
South Carolina	2,739	27	0.99	2,706	20	0.74
South Dakota	806	14	1.74	797	3	0.38
Tennessee	3,023	68	2.25	2,974	28	0.94
Texas	10,185	193	1.90	10,058	83	0.83
Utah	1,141	11	0.96	1,130	26	2.30
Vermont	565	31	5.49	561	7	1.25
Virginia	4,177	96	2.30	4,101	22	0.54
Washington	3,634	3	0.08	3,593	32	0.89
West Virginia	1,087	6	0.55	1,071	13	1.21
Wisconsin	4,084	11	0.27	4,046	28	0.69
Wyoming	497	0	0.00	492	3	0.61

**Table 8. 2007 and 2008 Frequency of Address Changes by State**

State	Total GQs (2007)	Number of Address Changes (2007)	Percent of Address Changes (2007)	Total GQs (2008)	Number of Address Changes (2008)	Percent of Address Changes (2008)
United States	183,328	1,152	0.63	180,919	2,193	1.21
Puerto Rico	1,180	6	0.51	1,171	3	0.26
Alabama	2,332	22	0.94	2,288	29	1.27
Alaska	878	20	2.28	878	4	0.46
Arizona	2,481	7	0.28	2,440	17	0.70
Arkansas	1,569	16	1.02	1,553	17	1.10
California	22,579	106	0.47	22,251	129	0.58
Colorado	2,486	11	0.44	2,455	46	1.87
Connecticut	2,098	19	0.91	2,081	12	0.58
Delaware	509	2	0.39	505	7	1.39
District of Columbia	706	5	0.71	695	10	1.44
Florida	7,938	65	0.82	7,755	116	1.50
Georgia	3,770	35	0.93	3,691	53	1.44
Hawaii	1,296	25	1.93	1,265	12	0.95
Idaho	845	7	0.83	832	11	1.32
Illinois	5,784	24	0.42	5,699	67	1.18

**Table 8 (cont). 2007 and 2008 Frequency of Address Changes by State**

State	Total GQs (2007)	Number of Address Changes (2007)	Percent of Address Changes (2007)	Total GQs (2008)	Number of Address Changes (2008)	Percent of Address Changes (2008)
United States	183,328	1,152	0.63	180,919	2,193	1.21
Puerto Rico	1,180	6	0.51	1,171	3	0.26
Indiana	3,570	14	0.39	3,547	74	2.09
Iowa	2,538	10	0.39	2,512	26	1.04
Kansas	1,969	5	0.25	1,939	13	0.67
Kentucky	2,626	27	1.03	2,588	47	1.82
Louisiana	3,209	14	0.44	3,161	27	0.85
Maine	1,497	30	2.00	1,471	22	1.50
Maryland	3,760	8	0.21	3,694	24	0.65
Massachusetts	5,122	53	1.04	5,050	29	0.57
Michigan	8,278	29	0.35	8,200	66	0.81
Minnesota	4,148	15	0.36	4,110	33	0.80
Mississippi	1,958	22	1.12	1,922	39	2.03
Missouri	3,748	30	0.80	3,692	50	1.35
Montana	921	4	0.43	912	3	0.33
Nebraska	1,459	9	0.62	1,445	14	0.97
Nevada	777	0	0.00	774	5	0.65
New Hampshire	1,006	9	0.90	993	8	0.81
New Jersey	5,392	26	0.48	5,338	28	0.53
New Mexico	1,096	3	0.27	1,072	11	1.03
New York	11,792	87	0.74	11,698	157	1.34
North Carolina	6,073	39	0.64	5,985	180	3.01
North Dakota	638	5	0.78	637	3	0.47
Ohio	6,625	29	0.44	6,568	84	1.28
Oklahoma	2,151	18	0.84	2,121	27	1.27
Oregon	2,945	7	0.24	2,902	18	0.62
Pennsylvania	12,066	65	0.54	11,921	134	1.12
Rhode Island	755	12	1.59	750	11	1.47
South Carolina	2,739	19	0.69	2,706	54	2.00
South Dakota	806	8	0.99	797	9	1.13
Tennessee	3,023	17	0.56	2,974	46	1.55
Texas	10,185	84	0.83	10,058	152	1.51
Utah	1,141	5	0.44	1,130	11	0.97
Vermont	565	5	0.89	561	17	3.03
Virginia	4,177	44	1.05	4,101	132	3.22
Washington	3,634	13	0.36	3,593	30	0.84
West Virginia	1,087	3	0.28	1,071	21	1.96
Wisconsin	4,084	19	0.47	4,046	52	1.29
Wyoming	497	1	0.20	492	6	1.22

**Table 9. 2007 and 2008 Frequency of Name Changes by Major GQ Type**

Major GQ Type Group	GQ Type Description	Total GQs (2007)	Number of Name Changes (2007)	Percent of Name Changes (2007)	Total GQs (2008)	Number of Name Changes (2008)	Percent of Name Changes (2008)
		184,508	1,412	0.77	182,090	1,186	0.65
1	Correctional Facilities	14,986	34	0.23	14,868	145	0.98
2	Juvenile Detention Centers	5,792	15	0.26	5,887	44	0.75
3	Nursing Homes	30,291	38	0.13	29,810	565	1.90
4	Other Long-Term Care Facilities	9,182	11	0.12	8,126	16	0.20
5	College Dormitories	24,379	1,124	4.61	24,086	129	0.54
6	Military Facilities	6,490	111	1.71	6,359	46	0.72
7	Homeless Shelters	6,232	6	0.10	9,613	40	0.42
8	Group Homes Intended For Adults	44,639	38	0.09	60,633	138	0.23
9	Other GQ Type	42,517	35	0.08	22,708	63	0.28

**Table 10. 2007 and 2008 Frequency of Address Changes by Major GQ Type**

Major GQ Type Group	GQ Type Description	Total GQs (2007)	Number of Address Changes (2007)	Percent of Address Changes (2007)	Total GQs (2008)	Number of Address Changes (2008)	Percent of Address Changes (2008)
		184,508	1,158	0.63	182,090	2,196	1.21
1	Correctional Facilities	14,986	157	1.05	14,868	528	3.55
2	Juvenile Detention Centers	5,792	35	0.60	5,887	59	1.00
3	Nursing Homes	30,291	116	0.38	29,810	308	1.03
4	Other Long-Term Care Facilities	9,182	17	0.19	8,126	31	0.38
5	College Dormitories	24,379	416	1.71	24,086	538	2.23
6	Military Facilities	6,490	287	4.42	6,359	152	2.39
7	Homeless Shelters	6,232	15	0.24	9,613	41	0.43
8	Group Homes Intended For Adults	44,639	62	0.14	60,633	171	0.28
9	Other GQ Type	42,517	53	0.13	22,708	368	1.62

**Table 11. Frequency of Name and Address Changes by Size**

Year	Size	Total GQs	Name Changes		Total GQs	Address Changes	
			Number	Percent		Number	Percent
2007	Large	76,701	938	1.22	76,701	853	1.11
	Small	107,807	474	0.44	107,807	305	0.28
2008	Large	74,166	1,012	1.37	74,166	1,669	2.25
	Small	107,924	174	0.16	107,924	527	0.49

**Table 12. 2006-2008 Frequency of Ungeocoded GQs in Sample by State**

State	Total GQs (2006)	Number of Ungeocoded GQs (2006)	Percent of Ungeocoded GQs (2006)	Total GQs (2007)	Number of Ungeocoded GQs (2007)	Percent of Ungeocoded GQs (2007)	Total GQs (2008)	Number of Ungeocoded GQs (2008)	Percent of Ungeocoded GQs (2008)
United States	18,010	95	0.533	17,784	313	1.760	17,672	175	0.990
Puerto Rico	91	1	1.10	89	2	2.25	89	0	0.00
Alabama	267	1	0.38	259	3	1.16	249	0	0.00
Alaska	51	1	1.96	53	2	3.77	99	2	2.02
Arizona	224	1	0.45	239	10	4.18	236	9	3.81
Arkansas	178	3	1.69	177	5	2.83	170	1	0.59
California	1,753	2	0.11	1,734	46	2.65	1,657	24	1.45
Colorado	248	0	0.00	248	3	1.21	237	2	0.84
Connecticut	260	2	0.77	258	2	0.78	254	2	0.79
Delaware	52	0	0.00	52	1	1.92	74	0	0.00
District of Columbia	79	0	0.00	78	3	3.85	90	2	2.22
Florida	873	4	0.46	866	13	1.50	831	10	1.20
Georgia	533	1	0.19	518	12	2.32	488	8	1.64
Hawaii	93	0	0.00	91	8	8.79	103	7	6.80
Idaho	73	1	1.37	71	0	0.00	93	1	1.08
Illinois	704	1	0.14	670	1	0.15	644	2	0.31
Indiana	420	2	0.48	412	7	1.70	399	3	0.75
Iowa	250	0	0.00	241	6	2.49	233	0	0.00
Kansas	193	0	0.00	192	1	0.52	187	0	0.00
Kentucky	289	8	2.77	287	13	4.53	280	2	0.71
Louisiana	321	3	0.94	315	6	1.91	306	0	0.00
Maine	97	1	1.03	95	2	2.11	113	1	0.89
Maryland	309	1	0.32	306	1	0.33	294	1	0.34
Massachusetts	537	3	0.56	537	6	1.12	506	1	0.20
Michigan	595	6	1.01	596	9	1.51	591	14	2.37
Minnesota	343	2	0.58	336	2	0.60	328	0	0.00
Mississippi	231	2	0.87	228	3	1.32	218	2	0.92
Missouri	381	0	0.00	383	1	0.26	368	0	0.00

**Table 12 (cont). 2006-2008 Frequency of Ungeocoded GQs in Sample by State**

State	Total GQs (2006)	Number of Ungeocoded GQs (2006)	Percent of Ungeocoded GQs (2006)	Total GQs (2007)	Number of Ungeocoded GQs (2007)	Percent of Ungeocoded GQs (2007)	Total GQs (2008)	Number of Ungeocoded GQs (2008)	Percent of Ungeocoded GQs (2008)
United States	18,010	95	0.533	17,784	313	1.760	17,672	175	0.990
Puerto Rico	91	1	1.10	89	2	2.25	89	0	0.00
Montana	68	1	1.47	63	1	1.59	102	4	3.92
Nebraska	129	1	0.78	128	1	0.78	122	0	0.00
Nevada	73	1	1.37	72	0	0.00	93	5	5.38
New Hampshire	95	0	0.00	91	2	2.20	115	1	0.87
New Jersey	488	2	0.41	485	4	0.83	478	2	0.42
New Mexico	91	0	0.00	89	2	2.25	102	1	0.98
New York	1,295	3	0.23	1,265	14	1.11	1,227	4	0.33
North Carolina	632	7	1.11	638	25	3.92	615	12	1.95
North Dakota	62	0	0.00	61	0	0.00	109	0	0.00
Ohio	666	2	0.30	658	3	0.46	643	1	0.16
Oklahoma	259	0	0.00	250	4	1.60	246	0	0.00
Oregon	197	2	1.02	204	3	1.47	204	4	1.96
Pennsylvania	1,092	11	1.01	1,082	18	1.66	1,038	5	0.48
Rhode Island	97	0	0.00	97	0	0.00	98	0	0.00
South Carolina	321	0	0.00	322	11	3.42	314	8	2.55
South Dakota	72	0	0.00	71	0	0.00	103	0	0.00
Tennessee	354	1	0.28	349	3	0.86	341	1	0.29
Texas	1,174	9	0.77	1,121	18	1.61	1,092	5	0.46
Utah	102	0	0.00	99	1	1.01	112	0	0.00
Vermont	55	0	0.00	53	1	1.89	102	1	0.98
Virginia	488	1	0.21	500	19	3.80	495	15	3.03
Washington	318	1	0.31	321	6	1.87	308	5	1.62
West Virginia	106	3	2.83	105	6	5.71	103	4	3.88
Wisconsin	385	4	1.04	382	4	1.05	374	3	0.80
Wyoming	37	1	2.70	36	1	2.78	88	0	0.00



**Table 13. 2006-2008 Frequency of Ungeocoded GQs in Sample by Major GQ Type**

Major GQ Type Group	GQ Type Description	Total GQs (2006)	Number of Ungeocoded GQs (2006)	Percent of Ungeocoded GQs (2006)	Total GQs (2007)	Number of Ungeocoded GQs (2007)	Percent of Ungeocoded GQs (2007)	Total GQs (2008)	Number of Ungeocoded GQs (2008)	Percent of Ungeocoded GQs (2008)
		18,101	96	0.530	17,873	315	1.762	17,761	175	0.985
1	Correctional Facilities	3,411	79	2.32	3,396	135	3.98	3,482	55	1.58
2	Juvenile Detention Centers	324	1	0.31	320	2	0.63	330	1	0.30
3	Nursing Homes	4,375	0	0.00	4,287	1	0.02	4,256	1	0.02
4	Other Long-Term Care Facilities	613	0	0.00	566	1	0.18	473	1	0.21
5	College Dormitories	4,860	1	0.02	4,789	53	1.11	4,723	7	0.15
6	Military Facilities	833	0	0.00	841	85	10.11	790	62	7.85
7	Homeless Shelters	433	2	0.46	427	1	0.23	557	7	1.26
8	Group Homes Intended For Adults	1,508	0	0.00	1,517	1	0.07	2,279	0	0.00
9	Other GQ Type	1,744	13	0.75	1,730	36	2.08	871	41	4.71

**Table 14. Frequency of Ungeocoded GQs in Sample by Size**

Year	National	Total GQs	Ungeocoded GQs	
			Number	Percent
2006	Large	15,436	79	0.51
	Small	2,665	17	0.64
2007	Large	15,177	288	1.90
	Small	2,696	27	1.00
2008	Large	14,956	149	1.00
	Small	2,805	26	0.93

**Table 15. 2007 and 2008 Frequency of Ungeocoded GQs Geocoded in Field by State**

State	Total GQs (2007)	Number of Ungeocoded GQs Geocoded in Field (2007)	Percent of Ungeocoded GQs Geocoded in Field (2007)	Total GQs (2008)	Number of Ungeocoded GQs Geocoded in Field (2008)	Percent of Ungeocoded GQs Geocoded in Field (2008)
United States	313	5	1.60	175	4	2.29
Puerto Rico	2	0	0.00	0	0	0.00
California	46	0	0.00	24	1	4.17
North Carolina	25	1	4.00	12	3	25.00
Pennsylvania	18	1	5.56	5	0	0.00
South Carolina	11	1	9.09	8	0	0.00
Virginia	19	1	5.26	15	0	0.00
Wisconsin	4	1	25.00	3	0	0.00

**Table 16. 2007 and 2008 Frequency of Ungeocoded GQs Geocoded in Field by Major GQ Type**

Major GQ Type Group	GQ Type Description	Total GQs (2007)	Number of Ungeocoded GQs Geocoded in Field (2007)	Percent of Ungeocoded GQs Geocoded in Field (2007)	Total GQs (2008)	Number of Ungeocoded GQs Geocoded in Field (2008)	Percent of Ungeocoded GQs Geocoded in Field (2008)
		315	5	1.60	175	4	2.29
1	Correctional Facilities	135	1	0.74	55	0	0.00
2	Juvenile Detention Centers	2	0	0.00	1	1	100.00
3	Nursing Homes	1	0	0.00	1	0	0.00
4	Other Long-Term Care Facilities	1	0	0.00	1	0	0.00
5	College Dormitories	53	1	1.89	7	0	0.00
6	Military Facilities	85	3	3.53	62	2	3.23
7	Homeless Shelters	1	0	0.00	7	0	0.00
8	Group Homes Intended for Adults	1	0	0.00	0	0	0.00
9	Other GQ Type	36	0	0.00	41	1	2.44

**Table 17. Frequency of Ungeocoded GQs Geocoded in Field by Size**

Year	Size	Total GQs	Ungeocoded GQs Geocoded in Field	
			Number	Percent
2007	Large	288	5	1.74
	Small	27	0	0.00
2008	Large	149	2	1.34
	Small	26	2	7.69

**Table 18. 2006-2008 Difference in Expected Population and Observed Population**

Panel	2006				2007				2008			
	Sum of Expected Population (2006)	Sum of Observed Population (2006)	Difference in Sum of Expected and Observed Population (2006)	Percent Difference in Sum of Expected and Observed Population (2006)	Sum of Expected Population (2007)	Sum of Observed Population (2007)	Difference in Sum of Expected and Observed Population (2007)	Percent Difference in Sum of Expected and Observed Population (2007)	Sum of Expected Population (2008)	Sum of Observed Population (2008)	Difference in Sum of Expected and Observed Population (2008)	Percent Difference in Sum of Expected and Observed Population (2008)
January	322,339	266,187	56,152	17.4	281,745	268,818	12,927	4.6	287,797	270,204	17,593	6.1
February	333,388	265,080	68,308	20.5	285,051	259,631	25,420	8.9	288,046	278,728	9,318	3.2
March	332,731	272,678	60,053	18.0	285,975	268,237	17,738	6.2	270,439	252,692	17,747	6.6
April	309,549	278,798	30,751	9.9	281,984	260,981	21,003	7.4	301,963	287,009	14,954	5.0
May	303,194	244,691	58,503	19.3	270,536	243,760	26,776	9.9	294,135	265,257	28,878	9.8
June	300,601	206,307	94,294	31.4	289,911	237,485	52,426	18.1	275,424	235,003	40,421	14.7
July	333,253	258,611	74,642	22.4	309,736	248,893	60,843	19.6	298,281	248,065	50,216	16.8
August	302,813	246,651	56,162	18.5	282,164	251,558	30,606	10.8	288,238	250,172	38,066	13.2
September	451,612	271,234	180,793	39.9	447,214	275,248	171,966	38.5	438,497	266,501	171,996	39.2
October	301,854	269,285	32,569	10.8	271,473	255,660	15,813	5.8	287,672	276,236	11,436	4.0
November	320,885	284,736	36,149	11.3	297,997	285,548	12,449	4.2	279,735	264,367	15,368	5.5
December	303,266	270,836	32,430	10.7	296,027	257,624	38,403	13.0	301,329	282,236	19,093	6.3
<b>Total</b>	<b>3,915,485</b>	<b>3,135,094</b>	<b>780,806</b>	<b>19.9</b>	<b>3,599,813</b>	<b>3,113,443</b>	<b>486,370</b>	<b>13.5</b>	<b>3,611,556</b>	<b>3,176,470</b>	<b>435,086</b>	<b>12.0</b>

Figure 1. 2006 Expected Population vs 2006 Observed Population

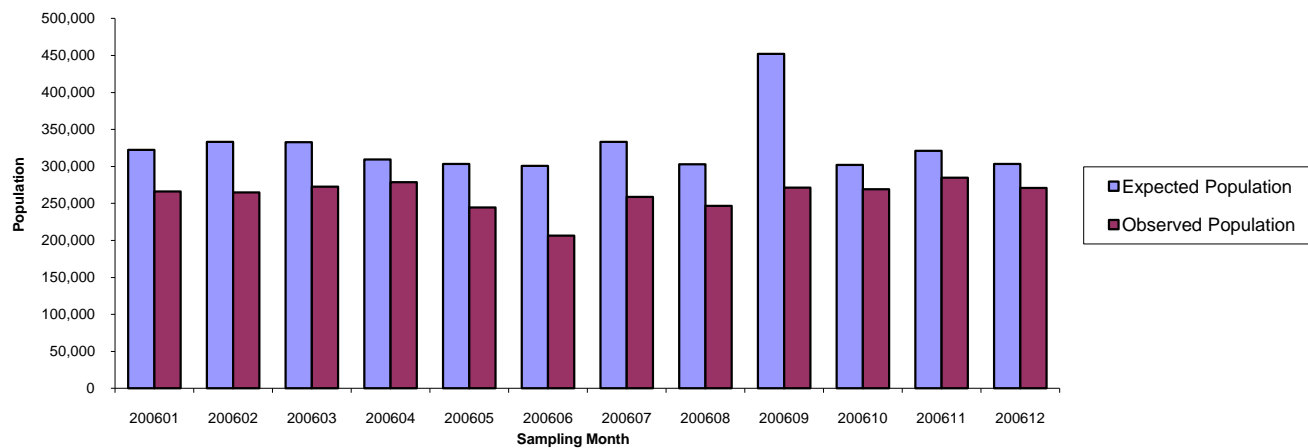


Figure 2. 2007 Expected Population vs 2007 Observed Population

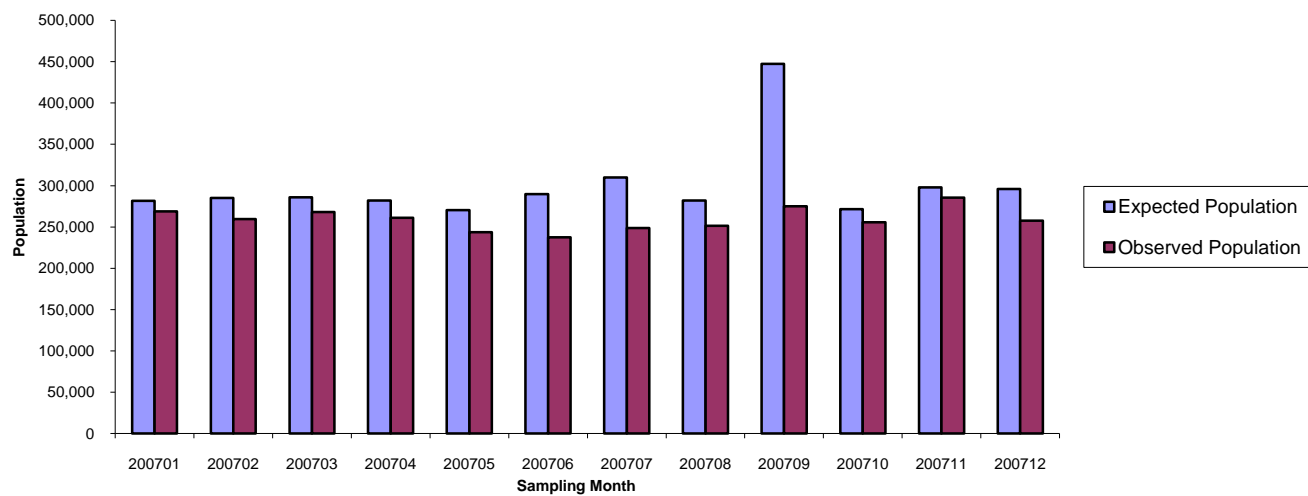
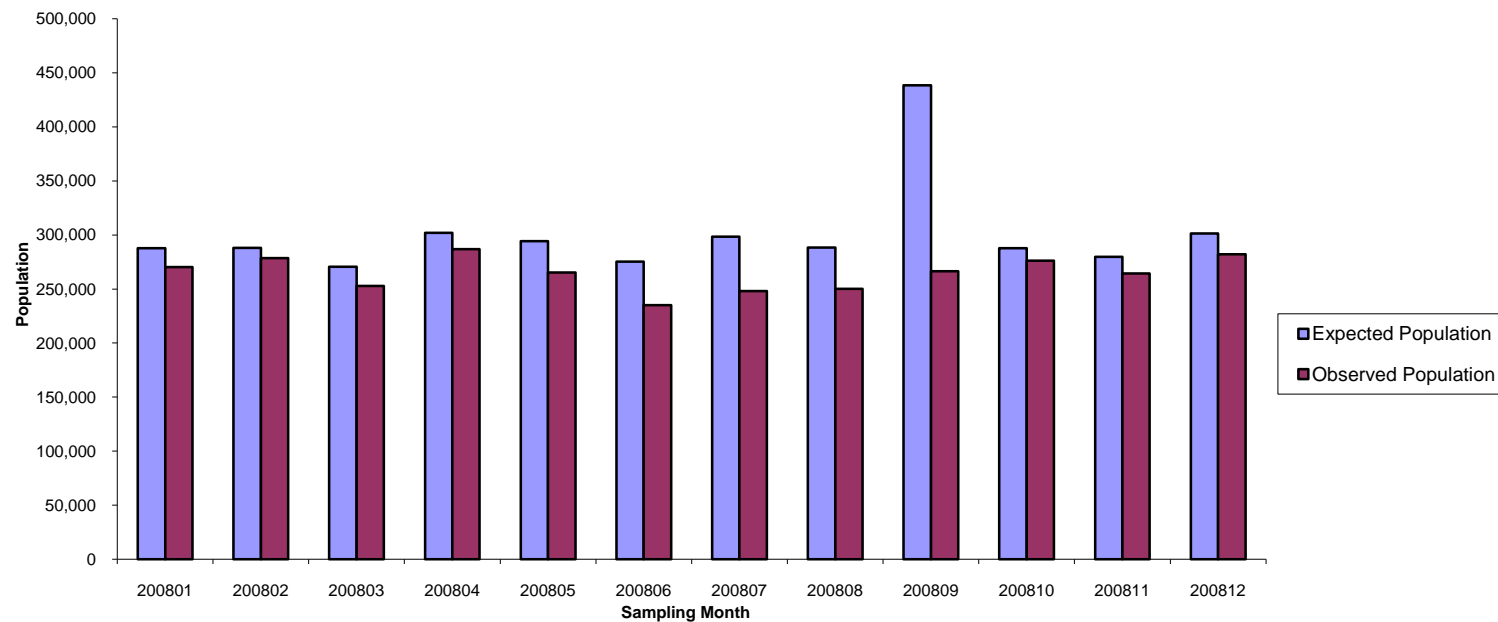


Figure 3. 2008 Expected Population vs 2008 Observed Population



**Table 19. Distribution of GQ Level Outcome Codes of Sampled GQ Adds for U.S.**

Outcome Code	Outcome Code Description	2007		2008	
		Number	Percent	Number	Percent
801	Completed Updating and Sampling	138	57.3	42	70.0
811	GQ Refusal - respondent feels can't comply due to legal restrictions	0	0.0	0	0.0
814	Unable to Locate GQ	0	0.0	0	0.0
818	GQ Refusal – all other non-legal issue reasons	0	0.0	0	0.0
819	Other Type A GQ	0	0.0	0	0.0
840	GQ No Longer Exists	18	7.5	3	5.0
841	GQ Converted to HU(s)	13	5.4	2	3.3
842	Domestic Violence Shelters	0	0.0	1	1.7
843	No Residents in GQ	55	22.8	6	10.0
844	GQ Out of Scope	17	7.1	6	10.0
<b>Total</b>		<b>241</b>	<b>100%</b>	<b>60</b>	<b>100%</b>

**Table 20. 2007 and 2008 Distribution of GQ Level Outcome Codes of Sampled GQ Adds by Major GQ Type**

Major GQ Type Group	GQ Type Description	Outcome Code	Outcome Code Description	Total GQ Adds (2007)	Number of GQ Adds (2007)	Percent of GQ Adds (2007)	Total GQ Adds (2008)	Number of GQ Adds (2008)	Percent of GQ Adds (2008)
1	Correctional Facilities	801	Completed Updating and Sampling	32	32	100.0	32	30	93.8
		840	GQ No Longer Exists		0	0.0		1	3.1
		844	GQ Out of Scope		0	0.0		1	3.1
2	Juvenile Detention Centers	801	Completed Updating and Sampling	1	1	100.0	1	0	0.0
		844	GQ Out of Scope		0	0.0		1	100.0
3	Nursing Homes	801	Completed Updating and Sampling	3	2	66.7	1	1	100.0
		840	GQ No Longer Exists		1	33.3		0	0.0
4	Other Long-Term Care Facilities	844	GQ Out of Scope	0	0	0.0	1	1	100.0
5	College Dormitories	801	Completed Updating and Sampling	37	25	67.6	9	7	77.8
		841	GQ Converted to HU(s)		1	2.7		1	11.1
		843	No Residents in GQ		9	24.3		1	11.1
		844	GQ Out of Scope		2	5.4		0	0.0
6	Military Facilities	801	Completed Updating and Sampling	73	50	68.5	0	0	0.0
		840	GQ No Longer Exists		1	1.4		0	0.0
		841	GQ Converted to HU(s)		1	1.4		0	0.0
		843	No Residents in GQ		15	20.5		0	0.0
		844	GQ Out of Scope		6	8.2		0	0.0
7	Homeless Shelters	801	Completed Updating and Sampling	4	2	50.0	4	2	50.0
		842	Domestic Violence Shelters		0	0.0		1	25.0
		843	No Residents in GQ		1	25.0		1	25.0
		844	GQ Out of Scope		1	25.0		0	0.0
8	Group Homes Intended For Adults	801	Completed Updating and Sampling	5	3	60.0	0	0	0.0
		840	GQ No Longer Exists		1	20.0		0	0.0
		844	GQ Out of Scope		1	20.0		0	0.0
9	Other GQ Type	801	Completed Updating and Sampling	86	23	26.7	12	2	16.7
		840	GQ No Longer Exists		15	17.4		2	16.7
		841	GQ Converted to HU(s)		11	12.8		1	8.3
		843	No Residents in GQ		30	34.9		4	33.3
		844	GQ Out of Scope		7	8.1		3	25.0

**Table 21. Distribution of GQ Level Outcome Codes of Sampled GQ Adds by Size**

Size	Outcome Code	Outcome Code Description	Total GQ Adds (2007)	Number of GQ Adds (2007)	Percent of GQ Adds (2007)	Total GQ Adds (2008)	Number of GQ Adds (2008)	Percent of GQ Adds (2008)
Large	801	Completed Updating and Sampling	186	114	61.3	59	41	69.5
	811	GQ Refusal - respondent feels can't comply due to legal restrictions		0	0.0		0	0.0
	814	Unable to Locate GQ		0	0.0		0	0.0
	818	GQ Refusal – all other non-legal issue reasons		0	0.0		0	0.0
	819	Other Type A GQ		0	0.0		0	0.0
	840	GQ No Longer Exists		9	4.8		3	5.1
	841	GQ Converted to HU(s)		8	4.3		2	3.4
	842	Domestic Violence Shelters		0	0.0		1	1.7
	843	No Residents in GQ		45	24.2		6	10.2
844	GQ Out of Scope	10	5.4	6	10.2			
Small	801	Completed Updating and Sampling	55	24	43.6	1	1	100.0
	811	GQ Refusal - respondent feels can't comply due to legal restrictions		0	0.0		0	0.0
	814	Unable to Locate GQ		0	0.0		0	0.0
	818	GQ Refusal – all other non-legal issue reasons		0	0.0		0	0.0
	819	Other Type A GQ		0	0.0		0	0.0
	840	GQ No Longer Exists		9	16.4		0	0.0
	841	GQ Converted to HU(s)		5	9.1		0	0.0
	842	Domestic Violence Shelters		0	0.0		0	0.0
	843	No Residents in GQ		10	18.2		0	0.0
844	GQ Out of Scope	7	12.7	0	0.0			



**Table 22. 2007 and 2008 GQ Adds Frequency  
of Address and Name Changes by State**

State	Total GQ Adds (2007)	Number of Name Changes (2007)	Percent of Name Changes (2007)	Number of Address Changes (2007)	Percent of Address Changes (2007)	Total GQ Adds (2008)	Number of Name Changes (2008)	Percent of Name Changes (2008)	Number of Address Changes (2008)	Percent of Address Changes (2008)
United States	3,059	28	0.9	1,061	34.7	338	1	0.3	155	45.9
Puerto Rico	1	0	0.0	0	0.0	1	0	0.0	0	0.0
Alabama	9	0	0.0	4	44.4	1	0	0.0	0	0.0
Alaska	12	0	0.0	10	83.3	9	0	0.0	1	11.1
Arizona	45	0	0.0	8	17.8	7	0	0.0	6	85.7
Arkansas	7	0	0.0	3	42.9	2	0	0.0	2	100.0
California	326	3	0.9	232	71.2	22	0	0.0	3	13.6
Colorado	7	0	0.0	4	57.1	3	0	0.0	3	100.0
Connecticut	6	0	0.0	1	16.7	0	0	0.0	0	0.0
Delaware	3	0	0.0	1	33.3	3	0	0.0	0	0.0
District of Columbia	5	0	0.0	2	40.0	0	0	0.0	0	0.0
Florida	180	0	0.0	34	18.9	7	0	0.0	2	28.6
Georgia	28	0	0.0	10	35.7	2	0	0.0	1	50.0
Hawaii	31	0	0.0	2	6.5	1	0	0.0	0	0.0
Idaho	4	0	0.0	1	25.0	0	0	0.0	0	0.0
Illinois	15	0	0.0	5	33.3	3	0	0.0	2	66.7
Indiana	38	1	2.6	9	23.7	12	0	0.0	9	75.0
Iowa	6	0	0.0	0	0.0	0	0	0.0	0	0.0
Kansas	2	0	0.0	1	50.0	1	0	0.0	0	0.0
Kentucky	10	0	0.0	6	60.0	1	0	0.0	0	0.0
Louisiana	10	0	0.0	2	20.0	0	0	0.0	0	0.0
Maine	20	0	0.0	10	50.0	2	0	0.0	2	100.0
Maryland	50	0	0.0	5	10.0	0	0	0.0	0	0.0
Massachusetts	30	0	0.0	6	20.0	3	0	0.0	2	66.7
Michigan	259	11	4.2	35	13.5	34	0	0.0	25	73.5
Minnesota	5	0	0.0	2	40.0	3	0	0.0	2	66.7
Mississippi	10	0	0.0	2	20.0	0	0	0.0	0	0.0
Missouri	23	0	0.0	13	56.5	1	0	0.0	0	0.0
Montana	13	0	0.0	1	7.7	4	0	0.0	4	100.0
Nebraska	7	0	0.0	5	71.4	4	0	0.0	0	0.0
Nevada	1	0	0.0	1	100.0	7	0	0.0	3	42.9

**Table 22 (cont). 2007 and 2008 GQ Adds Frequency  
of Address and Name Changes by State**

State	Total GQ Adds (2007)	Number of Name Changes (2007)	Percent of Name Changes (2007)	Number of Address Changes (2007)	Percent of Address Changes (2007)	Total GQ Adds (2008)	Number of Name Changes (2008)	Percent of Name Changes (2008)	Number of Address Changes (2008)	Percent of Address Changes (2008)
United States	3,059	28	0.9	1,061	34.7	338	1	0.3	155	45.9
Puerto Rico	1	0	0.0	0	0.0	1	0	0.0	0	0.0
New Hampshire	4	0	0.0	2	50.0	0	0	0.0	0	0.0
New Jersey	11	0	0.0	1	9.1	12	0	0.0	5	41.7
New Mexico	5	0	0.0	4	80.0	5	0	0.0	2	40.0
New York	92	3	3.3	36	39.1	26	0	0.0	7	26.9
North Carolina	801	1	0.1	352	43.9	5	0	0.0	3	60.0
North Dakota	1	0	0.0	1	100.0	3	0	0.0	0	0.0
Ohio	69	6	8.7	37	53.6	14	0	0.0	10	71.4
Oklahoma	6	0	0.0	4	66.7	2	0	0.0	0	0.0
Oregon	146	0	0.0	11	7.5	4	0	0.0	2	50.0
Pennsylvania	15	0	0.0	6	40.0	29	1	3.4	13	44.8
Rhode Island	1	0	0.0	0	0.0	0	0	0.0	0	0.0
South Carolina	18	0	0.0	0	0.0	6	0	0.0	5	83.3
South Dakota	10	0	0.0	4	40.0	0	0	0.0	0	0.0
Tennessee	10	0	0.0	9	90.0	3	0	0.0	1	33.3
Texas	146	0	0.0	91	62.3	38	0	0.0	19	50.0
Utah	1	0	0.0	1	100.0	4	0	0.0	1	25.0
Vermont	0	0	0.0	0	0.0	1	0	0.0	1	100.0
Virginia	499	1	0.2	79	15.8	3	0	0.0	0	0.0
Washington	22	0	0.0	3	13.6	35	0	0.0	6	17.1
West Virginia	6	0	0.0	0	0.0	1	0	0.0	1	100.0
Wisconsin	26	2	7.7	4	15.4	15	0	0.0	12	80.0
Wyoming	8	0	0.0	1	12.5	0	0	0.0	0	0.0

**Table 23. 2007 and 2008 GQ Adds Frequency of Name Changes by Major GQ Type**

Major GQ Type Group	GQ Type Description	Total GQ Adds (2007)	Number of Name Changes (2007)	Percent of Name Changes (2007)	Total GQ Adds (2008)	Number of Name Changes (2008)	Percent of Name Changes (2008)
		3,060	28	0.9	339	1	0.3
1	Correctional Facilities	123	0	0.0	62	0	0.0
2	Juvenile Detention Centers	26	0	0.0	2	0	0.0
3	Nursing Homes	40	0	0.0	34	0	0.0
4	Other Long-Term Care Facilities	28	0	0.0	5	0	0.0
5	College Dormitories	254	4	1.6	34	0	0.0
6	Military Facilities	421	4	1.0	4	0	0.0
7	Homeless Shelters	128	0	0.0	52	0	0.0
8	Group Homes Intended For Adults	218	0	0.0	15	0	0.0
9	Other GQ Type	1,822	20	1.1	131	1	0.8

**Table 24. 2007 and 2008 GQ Adds Frequency of Address Changes by Major GQ Type**

Major GQ Type Group	GQ Type Description	Total GQ Adds (2007)	Number of Address Changes (2007)	Percent of Address Changes (2007)	Total GQ Adds (2008)	Number of Address Changes (2008)	Percent of Address Changes (2008)
		3,060	1,061	34.7	339	155	45.7
1	Correctional Facilities	123	59	48.0	62	45	72.6
2	Juvenile Detention Centers	26	14	53.8	2	0	0.0
3	Nursing Homes	40	32	80.0	34	1	2.9
4	Other Long-Term Care Facilities	28	25	89.3	5	0	0.0
5	College Dormitories	254	143	56.3	34	4	11.8
6	Military Facilities	421	98	23.3	4	0	0.0
7	Homeless Shelters	128	108	84.4	52	6	11.5
8	Group Homes Intended For Adults	218	209	95.9	15	0	0.0
9	Other GQ Type	1,822	373	20.5	131	99	75.6

**Table 25. GQ Adds Frequency of Name and Address Changes by Size**

Year	Size	Total GQ Adds	Name Changes		Total GQ Adds	Address Changes	
			Number	Percent		Number	Percent
2007	Large	773	20	2.6	773	133	17.2
	Small	2,287	8	0.3	2,287	928	40.6
2008	Large	151	0	0.0	151	86	57.0
	Small	188	1	0.5	188	69	36.7

**Table 26. 2007 and 2008 GQ Adds Frequency of Ungeocoded GQs in Sample by State**

State	Total GQ Adds (2007)	Number of Ungeocoded GQ Adds (2007)	Percent of Ungeocoded GQ Adds (2007)	Total GQ Adds (2008)	Number of Ungeocoded GQ Adds (2008)	Percent of Ungeocoded GQ Adds (2008)
United States	240	103	42.9	60	49	81.7
Alabama	0	0	0.0	0	0	0.0
Alaska	1	0	0.0	1	1	100.0
Arizona	18	6	33.3	5	5	100.0
Arkansas	0	0	0.0	0	0	0.0
California	35	26	74.3	2	1	50.0
Colorado	4	0	0.0	2	2	100.0
Connecticut	1	1	100.0	0	0	0.0
Delaware	0	0	0.0	0	0	0.0
District of Columbia	2	2	100.0	0	0	0.0
Florida	22	7	31.8	3	2	66.7
Georgia	8	4	50.0	0	0	0.0
Hawaii	7	7	100.0	0	0	0.0
Idaho	0	0	0.0	0	0	0.0
Illinois	0	0	0.0	1	1	100.0
Indiana	4	4	100.0	3	3	100.0
Iowa	0	0	0.0	0	0	0.0
Kansas	1	0	0.0	0	0	0.0
Kentucky	1	1	100.0	0	0	0.0
Louisiana	1	0	0.0	0	0	0.0
Maine	0	0	0.0	0	0	0.0

**Table 26 (cont). 2007 and 2008 GQ Adds Frequency of Ungeocoded GQs in Sample by State**

State	Total GQ Adds (2007)	Number of Ungeocoded GQ Adds (2007)	Percent of Ungeocoded GQ Adds (2007)	Total GQ Adds (2008)	Number of Ungeocoded GQ Adds (2008)	Percent of Ungeocoded GQ Adds (2008)
United States	240	103	42.9	60	49	81.7
Maryland	3	0	0.0	0	0	0.0
Massachusetts	4	0	0.0	1	1	100.0
Michigan	16	5	31.3	5	5	100.0
Minnesota	0	0	0.0	0	0	0.0
Mississippi	2	0	0.0	0	0	0.0
Missouri	2	0	0.0	0	0	0.0
Montana	0	0	0.0	2	2	100.0
Nebraska	0	0	0.0	0	0	0.0
Nevada	0	0	0.0	5	5	100.0
New Hampshire	0	0	0.0	0	0	0.0
New Jersey	1	0	0.0	1	1	100.0
New Mexico	1	0	0.0	1	1	100.0
New York	13	2	15.4	5	1	20.0
North Carolina	28	11	39.3	2	2	100.0
North Dakota	0	0	0.0	0	0	0.0
Ohio	5	0	0.0	2	1	50.0
Oklahoma	1	0	0.0	1	0	0.0
Oregon	14	2	14.3	1	1	100.0
Pennsylvania	3	0	0.0	3	2	66.7
Rhode Island	0	0	0.0	0	0	0.0
South Carolina	5	5	100.0	2	2	100.0
South Dakota	0	0	0.0	0	0	0.0
Tennessee	1	1	100.0	0	0	0.0
Texas	5	0	0.0	5	4	80.0
Utah	0	0	0.0	0	0	0.0
Vermont	0	0	0.0	1	1	100.0
Virginia	23	15	65.2	2	2	100.0
Washington	6	3	50.0	2	1	50.0
West Virginia	1	1	100.0	1	1	100.0
Wisconsin	1	0	0.0	1	1	100.0
Wyoming	0	0	0.0	0	0	0.0

**Table 27. 2007 and 2008 Frequency of Ungeocoded GQ Adds in Sample by Major GQ Type**

Major GQ Type Group	GQ Type Description	Total GQ Adds (2007)	Number Ungeocoded GQ Adds (2007)	Percent of Ungeocoded GQ Adds (2007)	Total GQ Adds (2008)	Number Ungeocoded GQ Adds (2008)	Percent of Ungeocoded GQ Adds (2008)
United States		240	103	42.9	60	49	81.7
1	Correctional Facilities	32	12	37.6	32	30	93.8
2	Juvenile Detention Centers	1	1	100.0	1	0	0.0
3	Nursing Homes	3	0	0.0	1	1	100.0
4	Other Long-Term Care Facilities	0	0	0.0	1	0	0.0
5	College Dormitories	37	3	8.1	9	5	55.6
6	Military Facilities	73	65	89.0	0	0	0.0
7	Homeless Shelters	4	0	0.0	4	2	50.0
8	Group Homes Intended for Adults	5	0	0.0	0	0	0.0
9	Other GQ Type	85	22	25.9	12	11	91.7

**Table 28. 2007 and 2008 Frequency of Ungeocoded GQ Adds in Sample Geocoded in Field by Size**

Year	National	Number Ungeocoded GQs	Ungeocoded GQs Geocoded in Field	
			Number	Percent
2007	Large	94	2	2.1
	Small	9	0	0.0
2008	Large	49	0	0.0
	Small	0	0	0.0

**Table 29. 2007 Frequency of Ungeocoded GQ Adds Geocoded in Field by State**

State	Number of Ungeocoded GQs Geocoded in Field
United States	2
California	1
North Carolina	1

**Table 30. 2007 Frequency of Ungeocoded GQ Adds Geocoded in Field by Major GQ Type**

Major GQ Type Group	GQ Type Description	Number of Ungeocoded GQs Geocoded in Field
6	Military Facilities	2

**Table 31. 2007 and 2008 GQ Adds Difference in Expected Population and Observed Population**

Panel	2007				2008			
	Sum of Expected Population (2007)	Sum of Observed Population (2007)	Difference in Sum of Expected and Observed Population (2007)	Percent Difference in Sum of Expected and Observed Population (2007)	Sum of Expected Population (2008)	Sum of Observed Population (2008)	Difference in Sum of Expected and Observed Population (2008)	Percent Difference in Sum of Expected and Observed Population (2008)
January	7,142	6,483	659	9.2	871	684	187	21.5
February	2,982	1,638	1,344	45.1	806	646	160	19.9
March	1,615	894	721	44.6	830	576	254	30.6
April	5,435	1,853	3,582	65.9	3,237	3,319	-82	-2.5
May	4,786	3,747	1,039	21.7	5,055	4,210	845	16.7
June	5,035	1,911	3,124	62.0	1,217	247	970	79.7
July	2,435	1,625	810	33.3	2,035	112	1,923	94.5
August	3,129	2,286	843	26.9	4,322	1,776	2,546	58.9
September	8,460	3,006	5,454	64.5	6,014	2,419	3,595	59.8
October	4,940	4,331	609	12.3	2,476	2,162	314	12.7
November	7,136	6,404	732	10.3	1,198	50	1,148	95.8
December	5,498	3,483	2,015	9.2	1,957	1,008	949	48.5
<b>Total</b>	<b>58,593</b>	<b>37,661</b>	<b>20,932</b>	<b>35.7</b>	<b>30,018</b>	<b>17,209</b>	<b>12,809</b>	<b>42.7</b>

Figure 4. 2007 GQ Adds Expected Population vs 2007 GQ Adds Observed Population

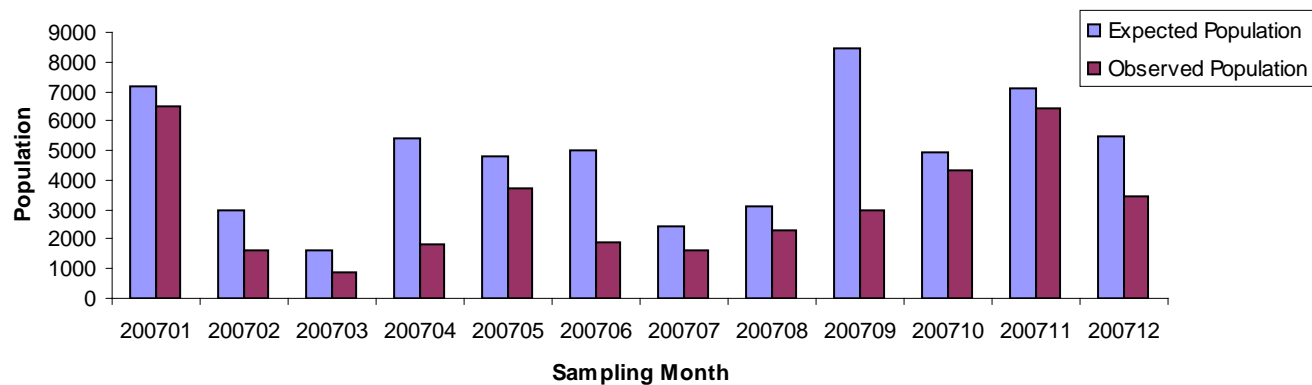
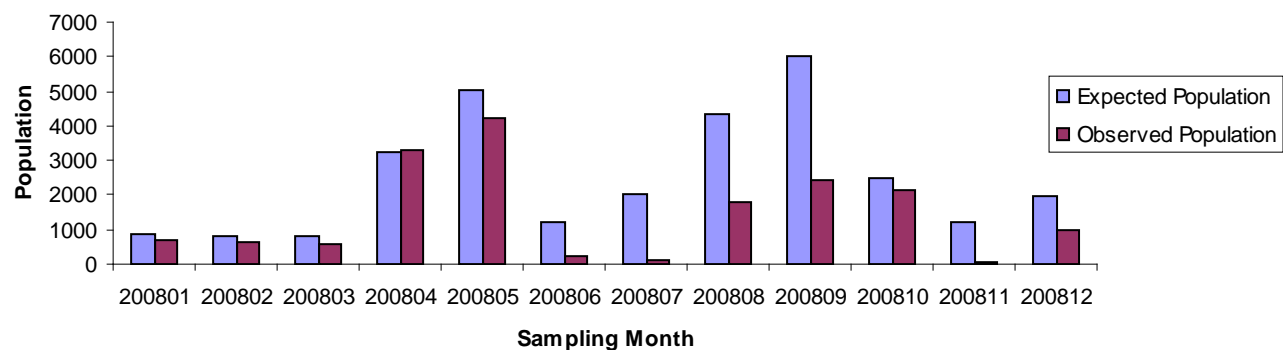


Figure 5. 2008 GQ Adds Expected Population vs 2008 GQ Adds Observed Population





**Table 32. GQ Deletes from GQ Universe**

Source	2007 Deletes	Percent of Deletes (2007)	2008 Deletes	Percent of Deletes (2008)
Total	2,432		2,757	
Address Problem Referrals	47	1.9	13	0.5
ACS GQ Field Operations	1,332	54.8	2,575	93.4
Migrant Worker Camp File	NA	NA	44	1.6
Military Liaisons	86	3.5	NA	NA
State Prison Research	28	1.2	69	2.5
MAF/Other	939	38.6	56	2.0