

# MAPPING AMERICAN COMMUNITY SURVEY DATA FOR FORT BEND AND HARRIS COUNTIES, TEXAS

---

Bonny M. Berkner

Illustrated Paper

The Association of American Geographers  
96th Annual Meeting  
Pittsburgh, Pennsylvania (4-8 April 2000)

U S C E N S U S B U R E A U

*Helping You Make Informed Decisions*

# What is the American Community Survey?

---

- A program to provide information **every year** for communities that is normally collected every ten years in the decennial census about:
  - age, gender, race/ethnicity
  - families, children, the elderly
  - income, poverty
  - education
  - work, unemployment
  - commuting patterns
  - housing

# What are the Goals of the American Community Survey?

---

- Provide federal, state, and local governments an information base for the administration and evaluation of government programs.
- Provide an alternative to the 2010 Census long-form data collection.
- Provide data users with timely demographic, housing, social, and economic data updated every year that can be compared across states, communities, and population groups.

# Stage 1: Demonstration Period 1996~1998

---

- 1996
  - Brevard County, FL
  - Multnomah County, OR (Portland)
  - Rockland County, NY
  - Fulton County, PA
- 1997 ~ added
  - Franklin County, OH (Columbus)
  - Douglas County, NE (Omaha)
  - Ft. Bend and Harris Counties, TX (Houston)
  - Otero County, NM
- 1998 ~ added
  - Broward County, FL (Replace Brevard County, Florida)
  - Richland and Kershaw Counties, SC ~ Decennial Census Dress Rehearsal counties

## Stage 2: Comparison Study 1999-2002

---

- Understand and measure differences between the traditional census long form and the American Community Survey.
- Provide a bridge to interpret changes between Census 2000 and the 2003-04...2003-07 American Community Survey.
- 31 sites, including eight from the 1996-1998 Demonstration Period.

# 1999-2002 Sites

- 1-percent household sample in:
  - Harris and Fort Bend Counties, TX
- 3-percent household sample in:
  - Broward County, FL
  - Bronx, NY
  - Lake County, IL
  - San Francisco, CA
  - Franklin County, OH
- 5-percent household sample in:
  - Pima County, AZ
  - Jefferson County, AR
  - Tulare County, CA
  - Upson County, GA
  - Black Hawk County, IA
  - Miami County, IN
  - DeSoto Parish, LA
  - Calvert County, MD
  - Hampden County, MA
- 5-percent household sample in:
  - Madison County, MS
  - Iron, Reynolds, and Washington Counties, MO
  - Flathead and Lake Counties, MT
  - Douglas County, NE
  - Rockland County, NY
  - Otero County, NM
  - Multnomah County, OR
  - Fulton County, PA
  - Schuylkill County, PA
  - Sevier County, TN
  - Starr County, TX
  - Zapata County, TX
  - Petersburg, VA
  - Yakima County, WA
  - Ohio County, WV
  - Oneida and Vilas Counties, WI

## Stage 3: Full Implementation 2003 and Beyond

---

- Begin national sample of 3 million addresses across all counties.
- Provide a yearly profile for communities of 65,000 or more, beginning in 2004 and each year thereafter.
- 2- to 5-year accumulations for communities of less than 65,000 population.

# How does the American Community Survey Work?

---

- A large, continuous demographic survey which:
  - Uses a Master Address File (MAF), a complete listing of all residential address and group quarters in the country, for sample selection
  - Mails questionnaires each month to a new sample of households
  - Conducts telephone interviews for those who did not mail back the questionnaire
  - Selects a 1:3 sample of addresses still not interviewed and conducts personal interviews
  - Completes data collection for each sample in three months



# Using the 1998 American Community Survey to Address the Changing Immigrant Population in Fort Bend and Harris Counties, Texas

---

- Purpose: provide an example of the type of analysis for which the American Community Survey data can be used.
- Why choose Fort Bend and Harris County?
  - These two counties were the largest 1998 site
  - These two counties are part of the large Houston metropolitan area which is dynamic in nature

# Data and Methodology for the 1998 American Community Survey ~ Fort Bend and Harris Counties, Texas

---

- The primary sampling unit was the housing unit, including all occupants. Group quarters were not included in the sample.
- Sampling rate was 3 percent for each Texas county.
- Confidentiality edits were applied to the data to assure that published data do not disclose information about specific individuals, households, or housing units.

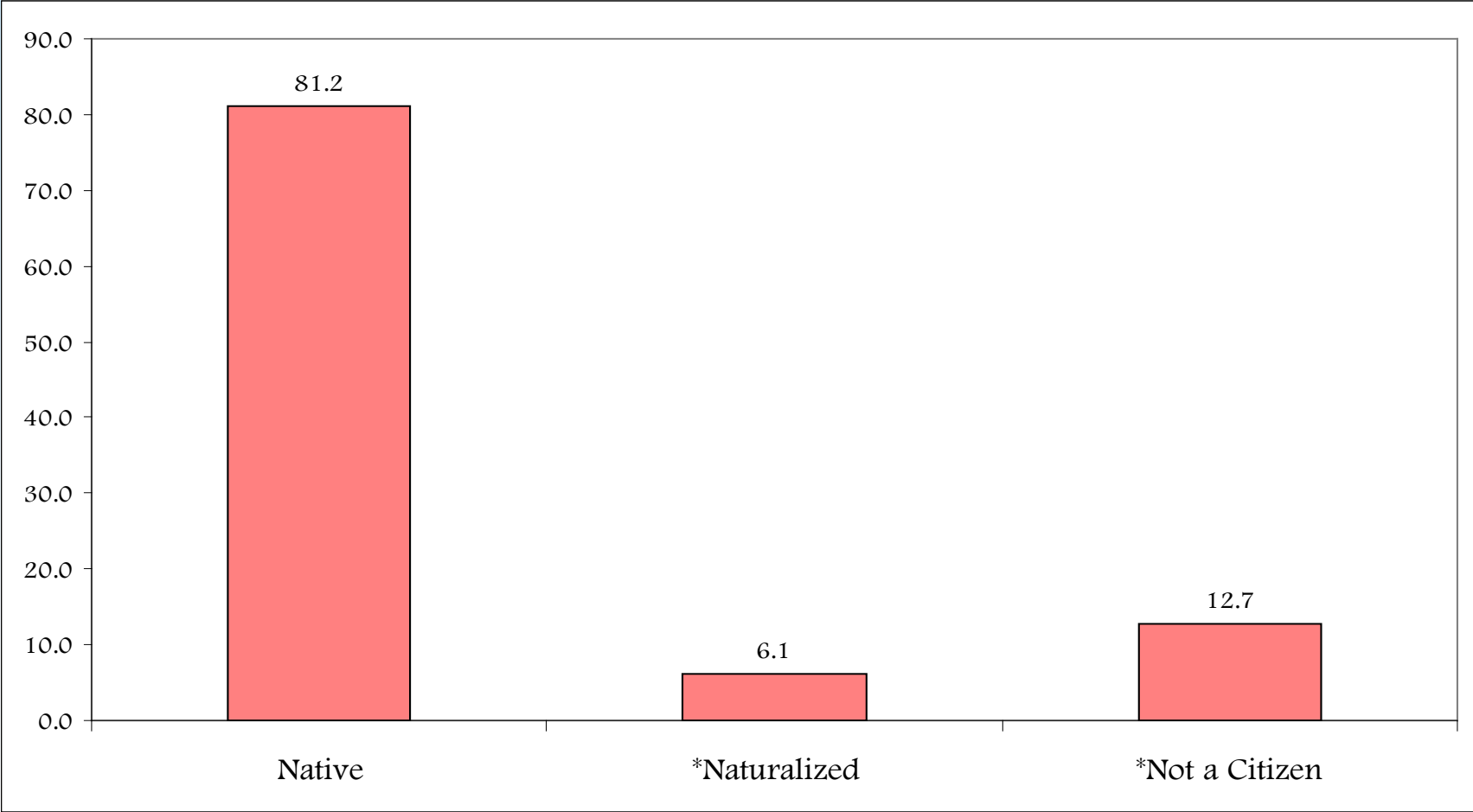
# Native and Foreign-Born Populations, as Defined by the U.S. Census Bureau

---

- **Native population** includes individuals born in the United States or an outlying area of the United States, and individuals who were born in a foreign country, but who had at least one parent who was a U.S. citizen.
- **Foreign-born population** is all individuals born in a foreign country except those who had at least one parent who was a U.S. citizen. This includes all foreign-born individuals residing in the United States, regardless of their legal status.
- **Foreign-born population** is the sum of the naturalized people and the non-citizens.

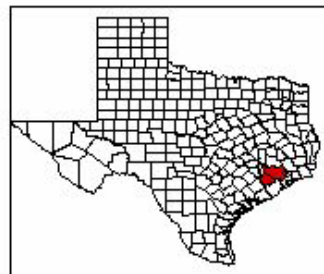
All Graphs and Maps are for Fort Bend and  
Harris Counties, Texas, using the 1998  
American Community Survey

# Percent Native and Foreign-Born Population: 1998



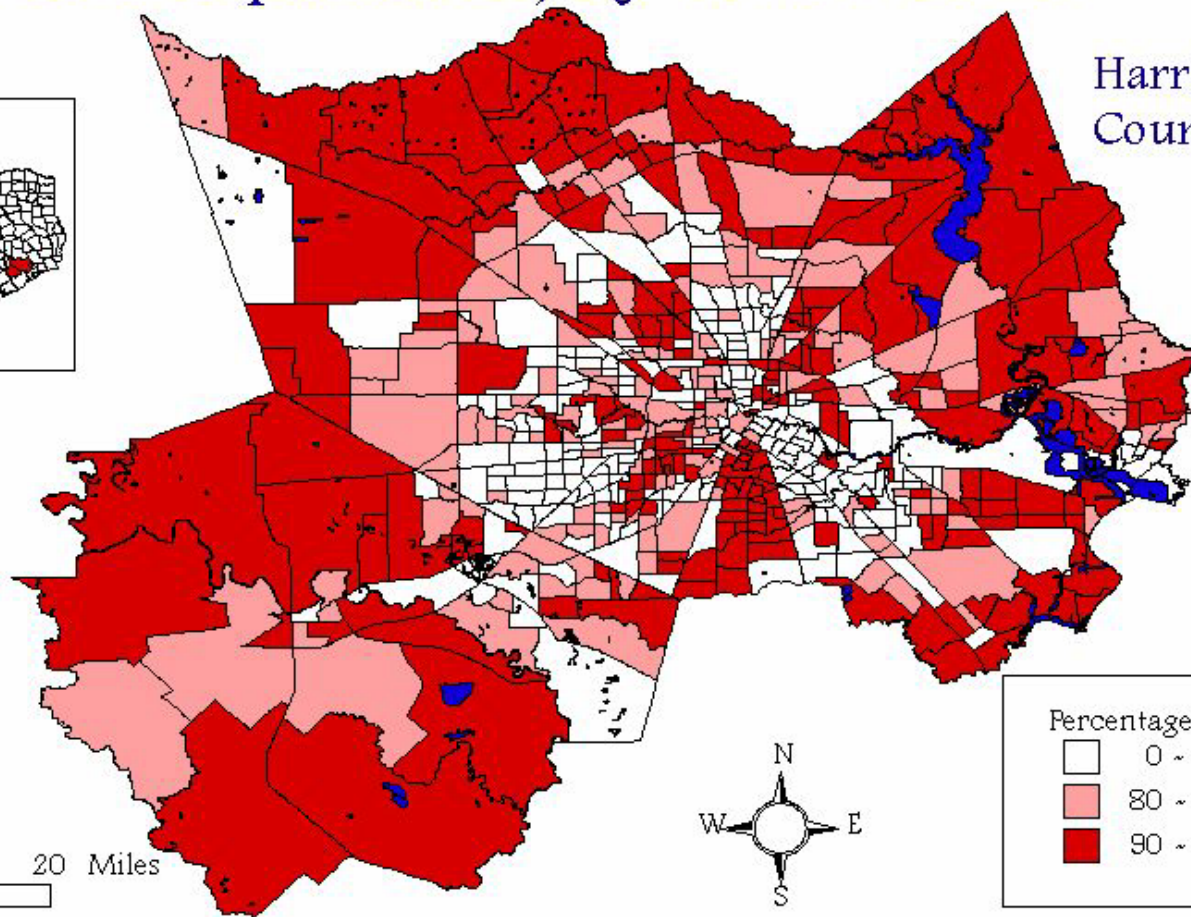
\*Naturalized and not a citizen sum to foreign-born population.

# Fort Bend and Harris Counties, Texas, Native Population, by Tract: 1998



Fort Bend  
County

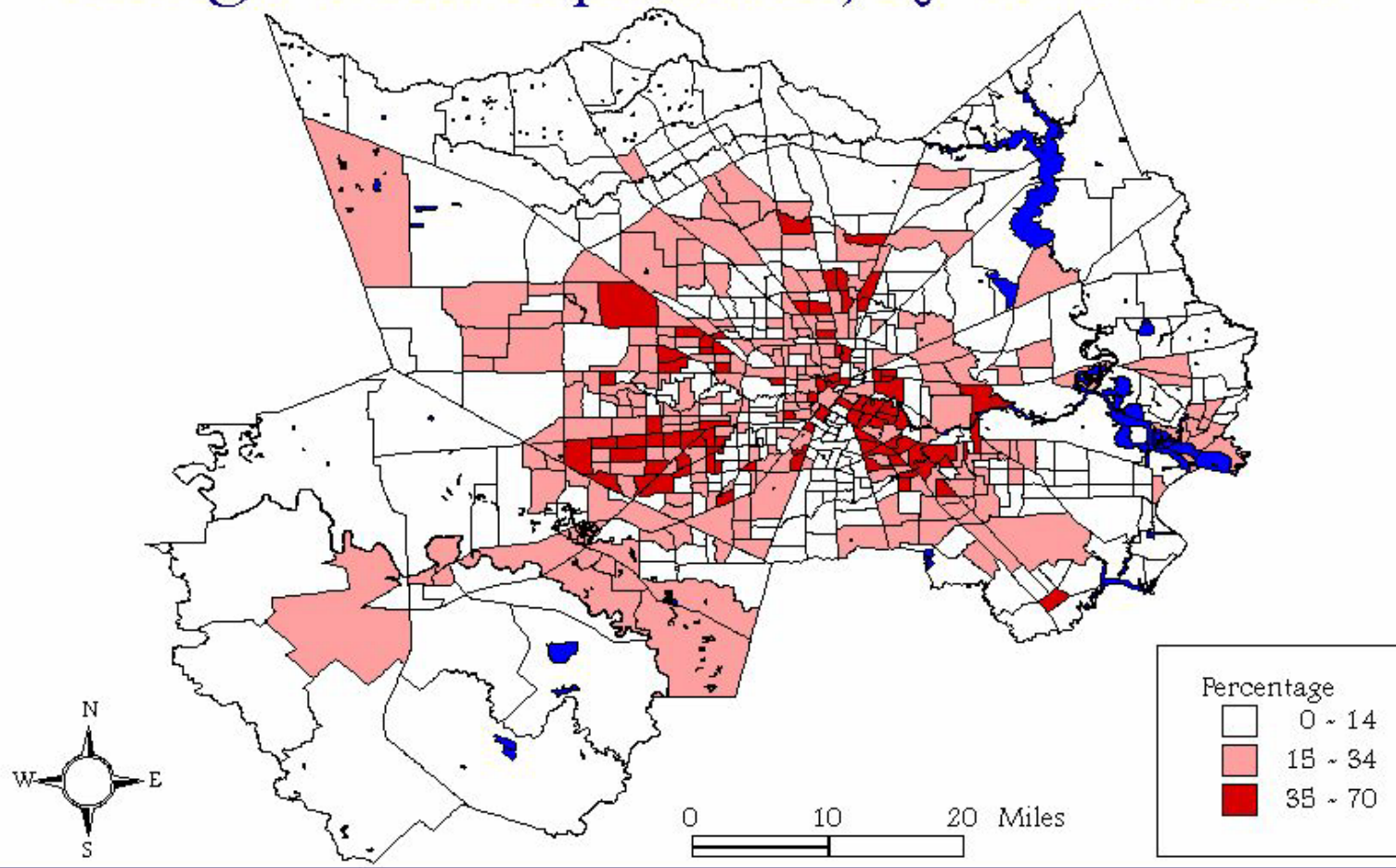
Harris  
County



Percentage

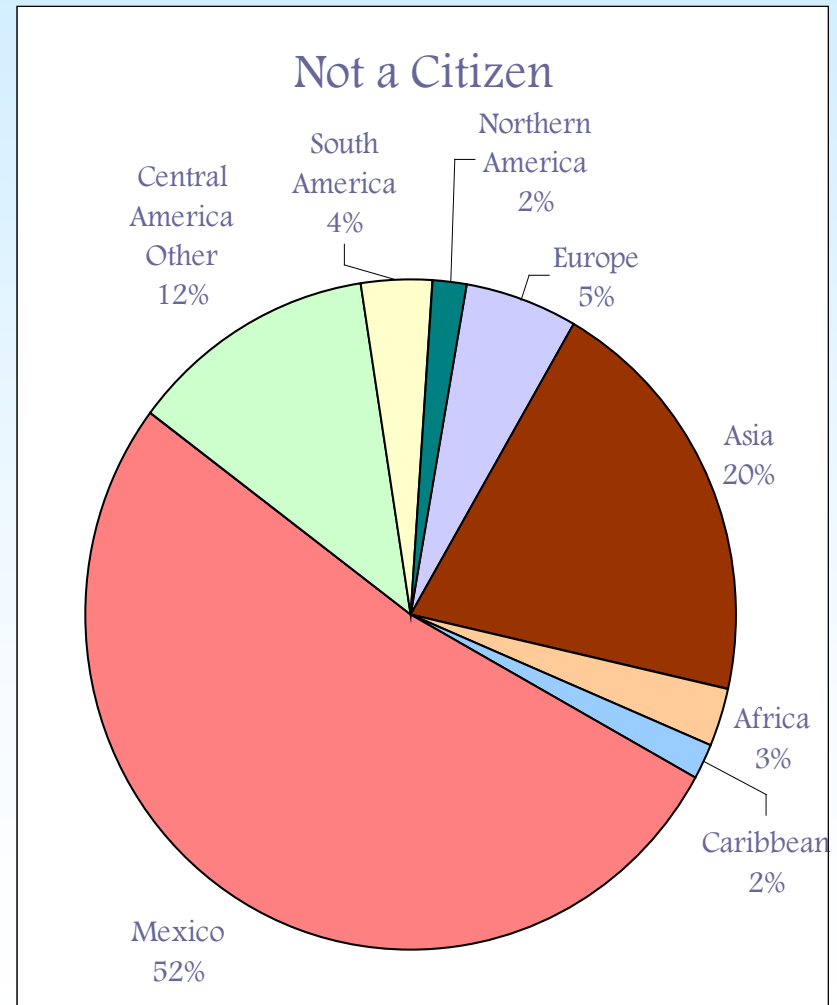
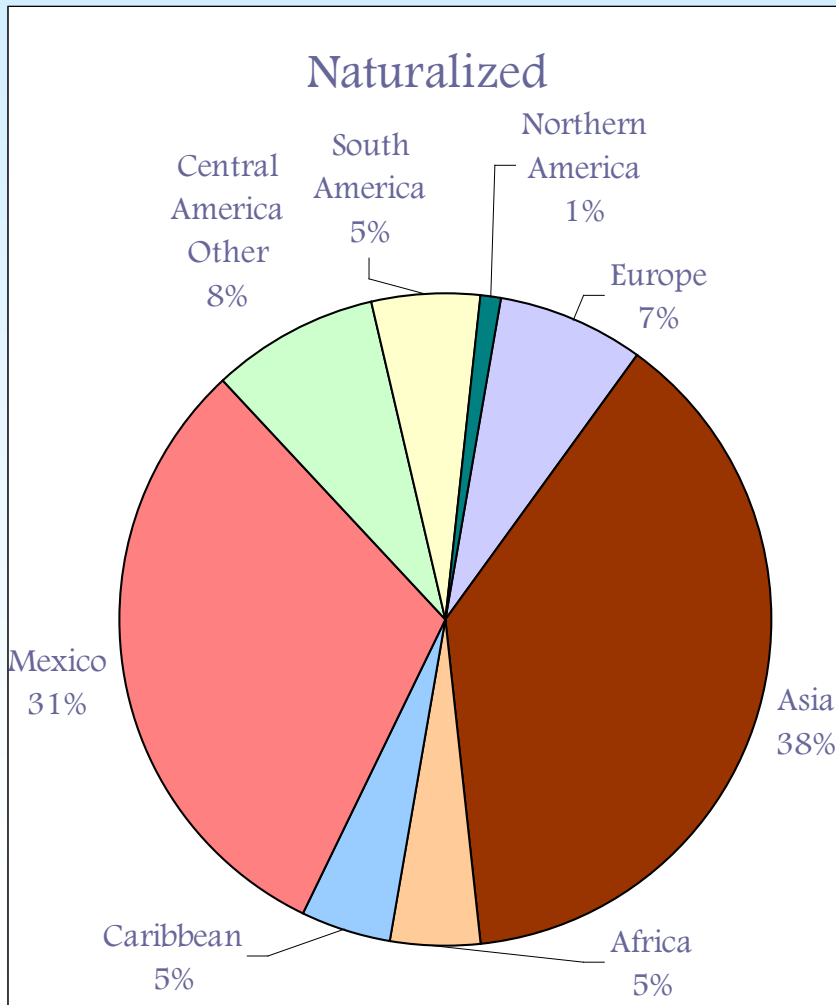
- 0 - 79
- 80 - 89
- 90 - 100

# Fort Bend and Harris Counties, Texas, Foreign-Born Population, by Tract: 1998



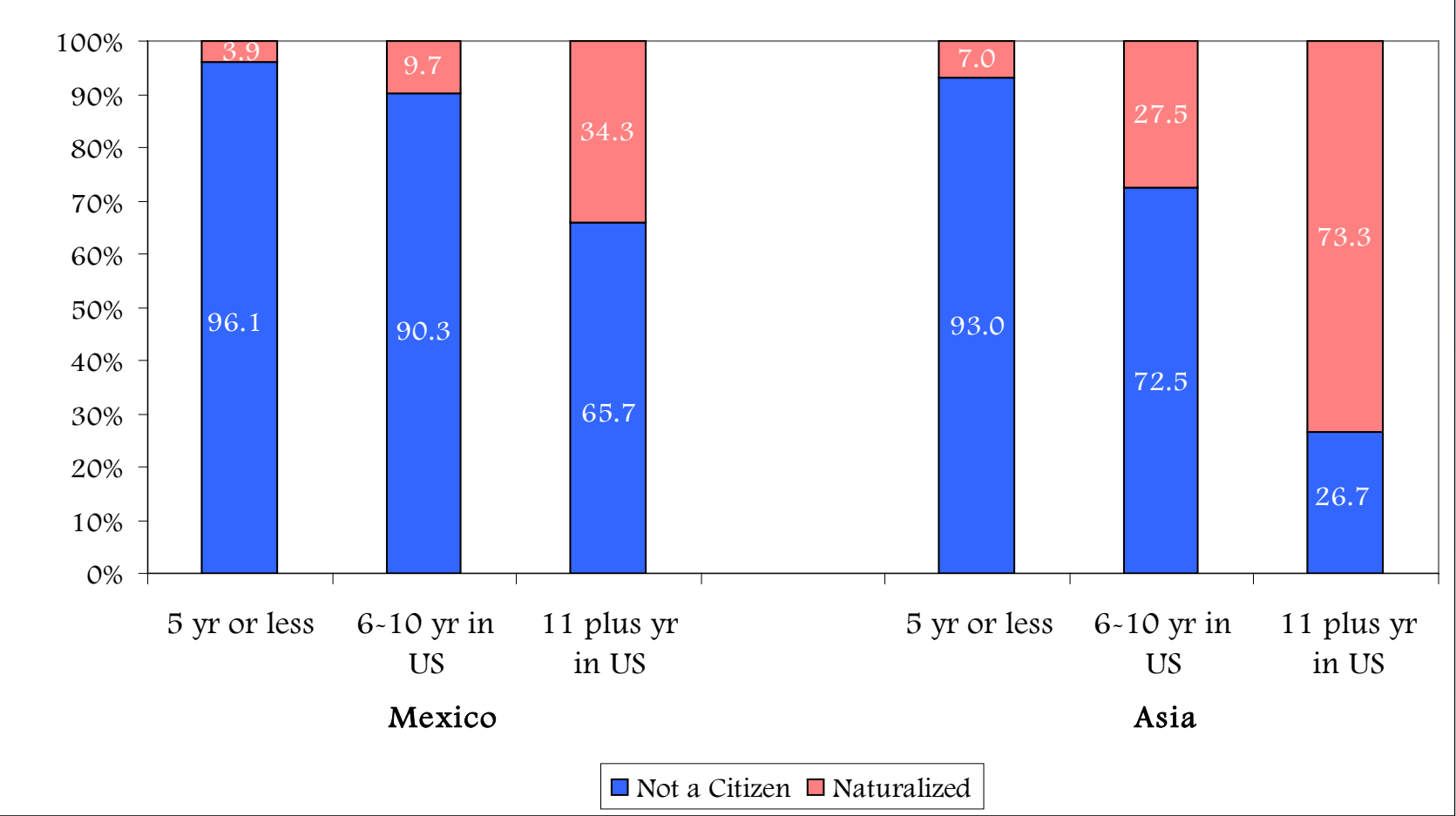


# Percent Foreign-Born by Region of Birth and Citizenship Status: 1998

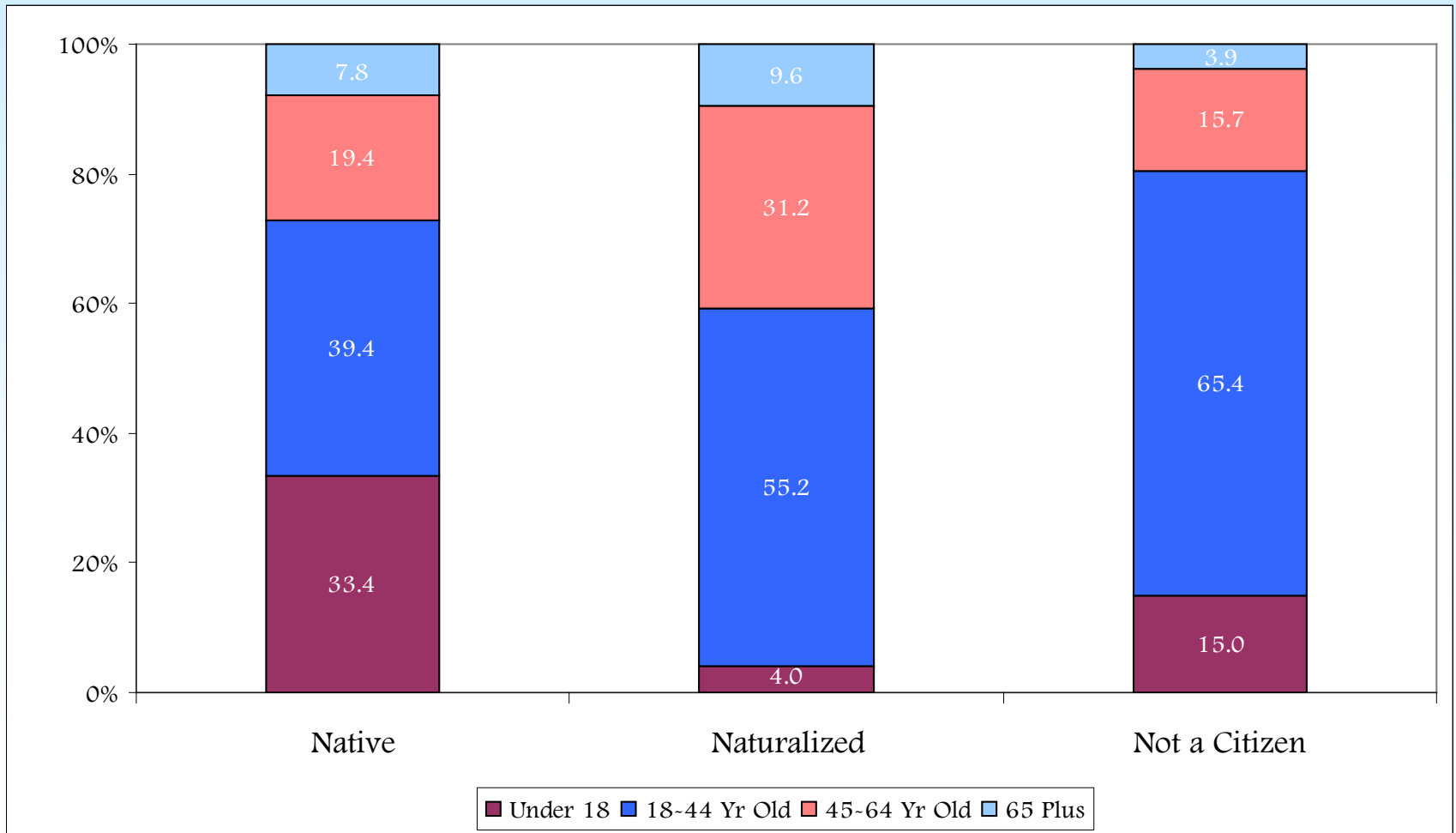




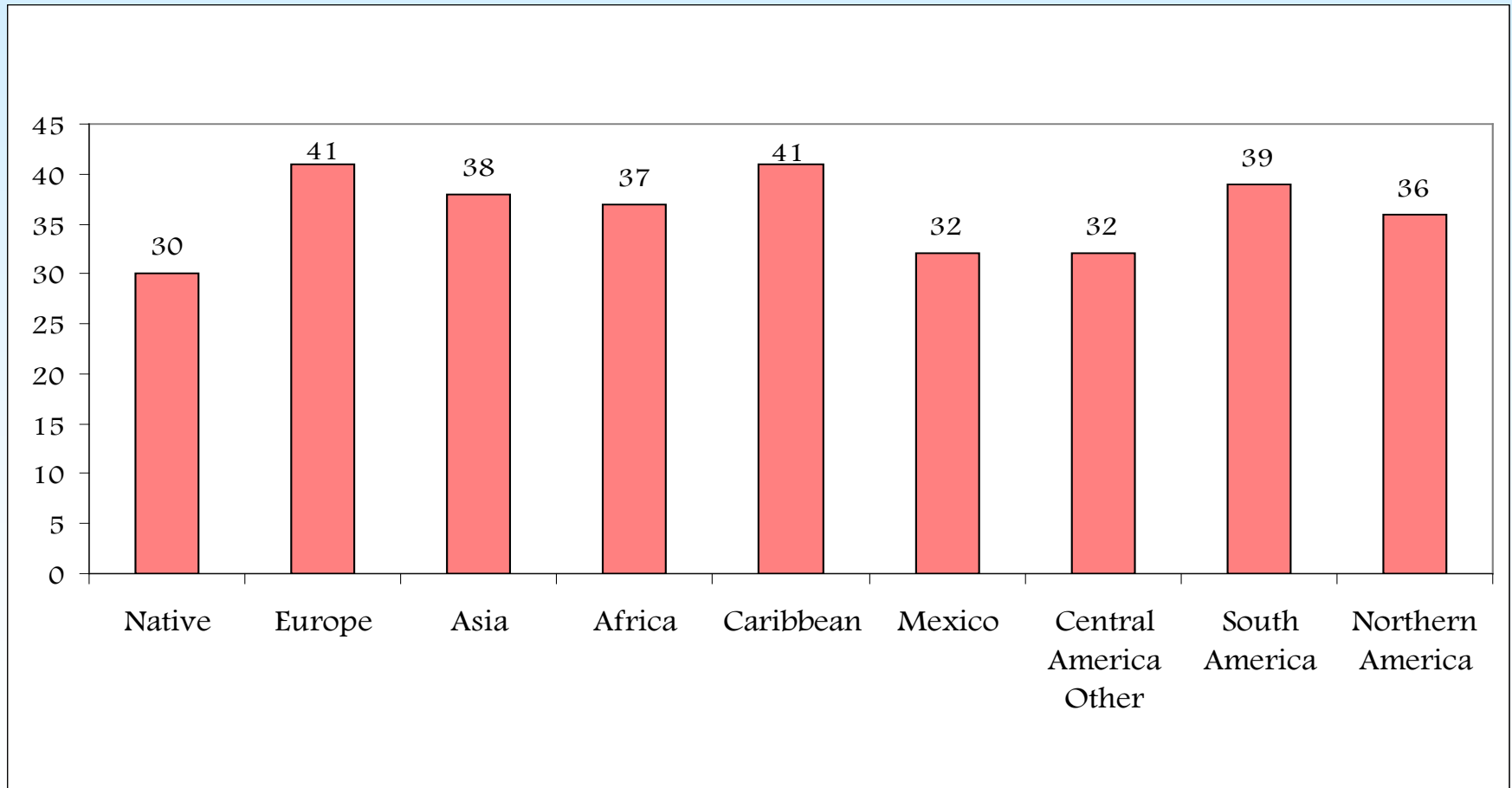
# Length of Residence in the U.S. and Citizenship Status for Foreign-Born Mexicans and Asians: 1998



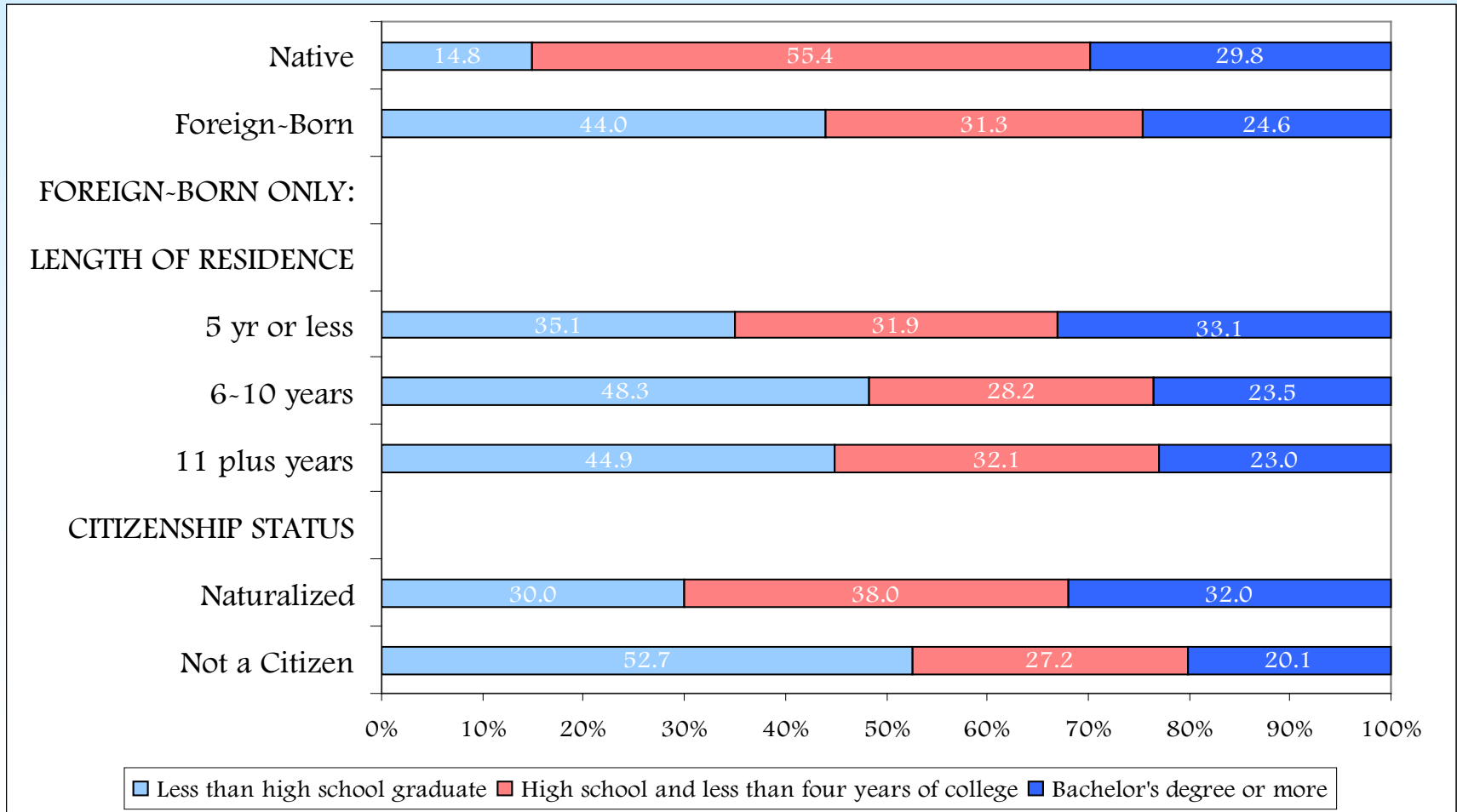
# Age of the Population by Nativity and Citizenship Status: 1998



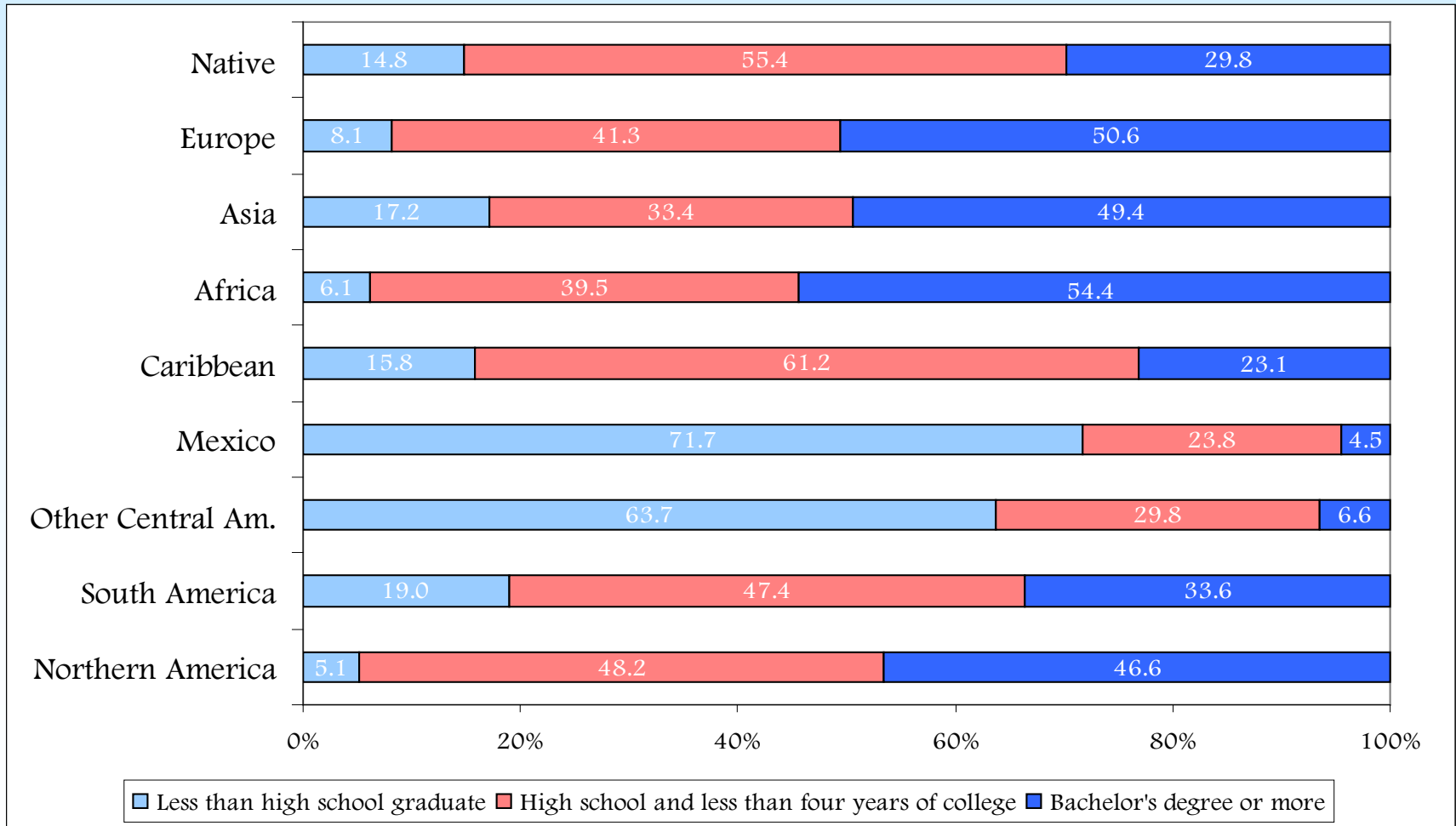
# Median Age of the Population by Region of Birth: 1998



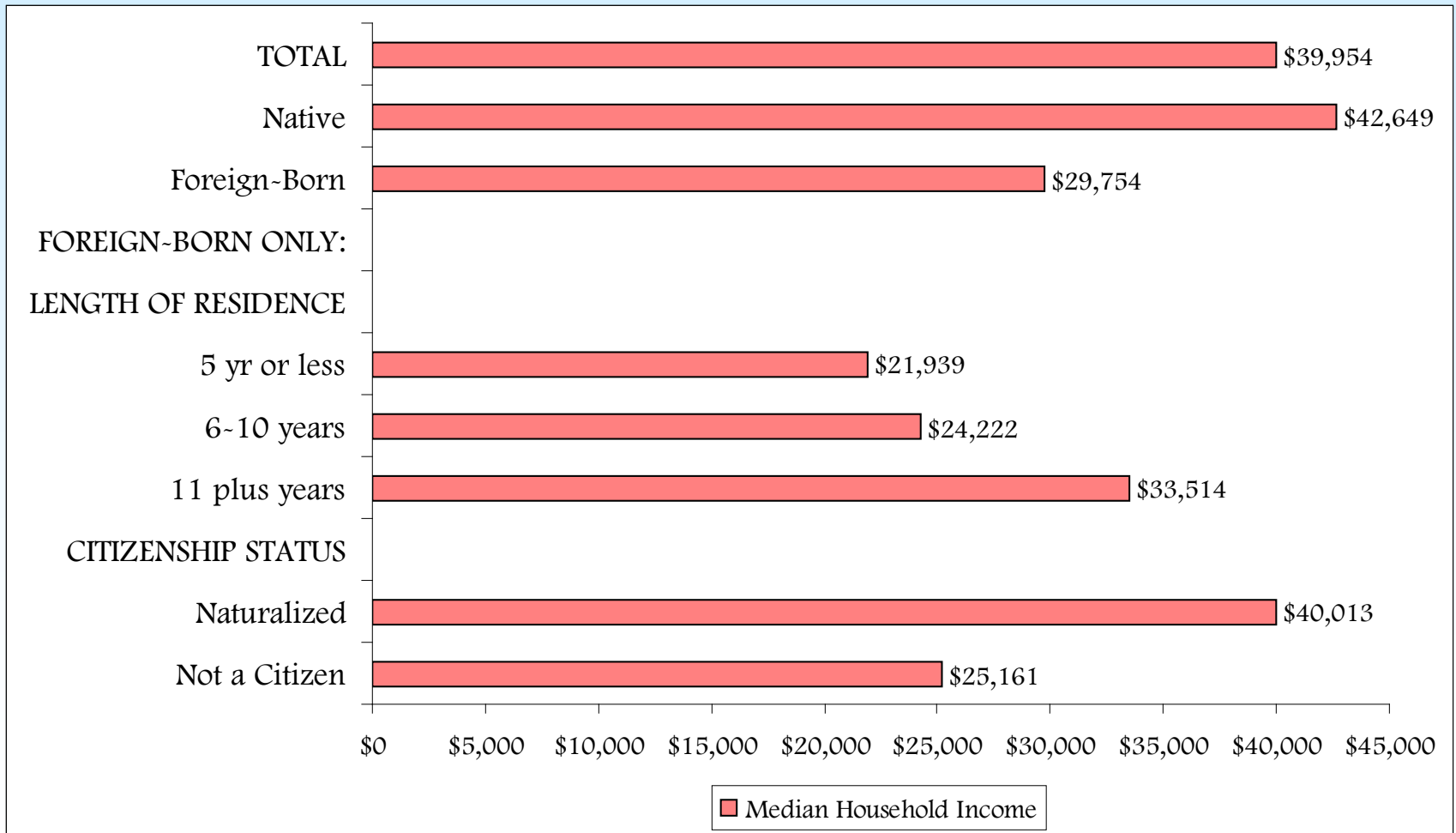
# Educational Attainment of the Population 25 Years Old and Over by Nativity, Length of Residence in the U.S. and Citizenship Status: 1998



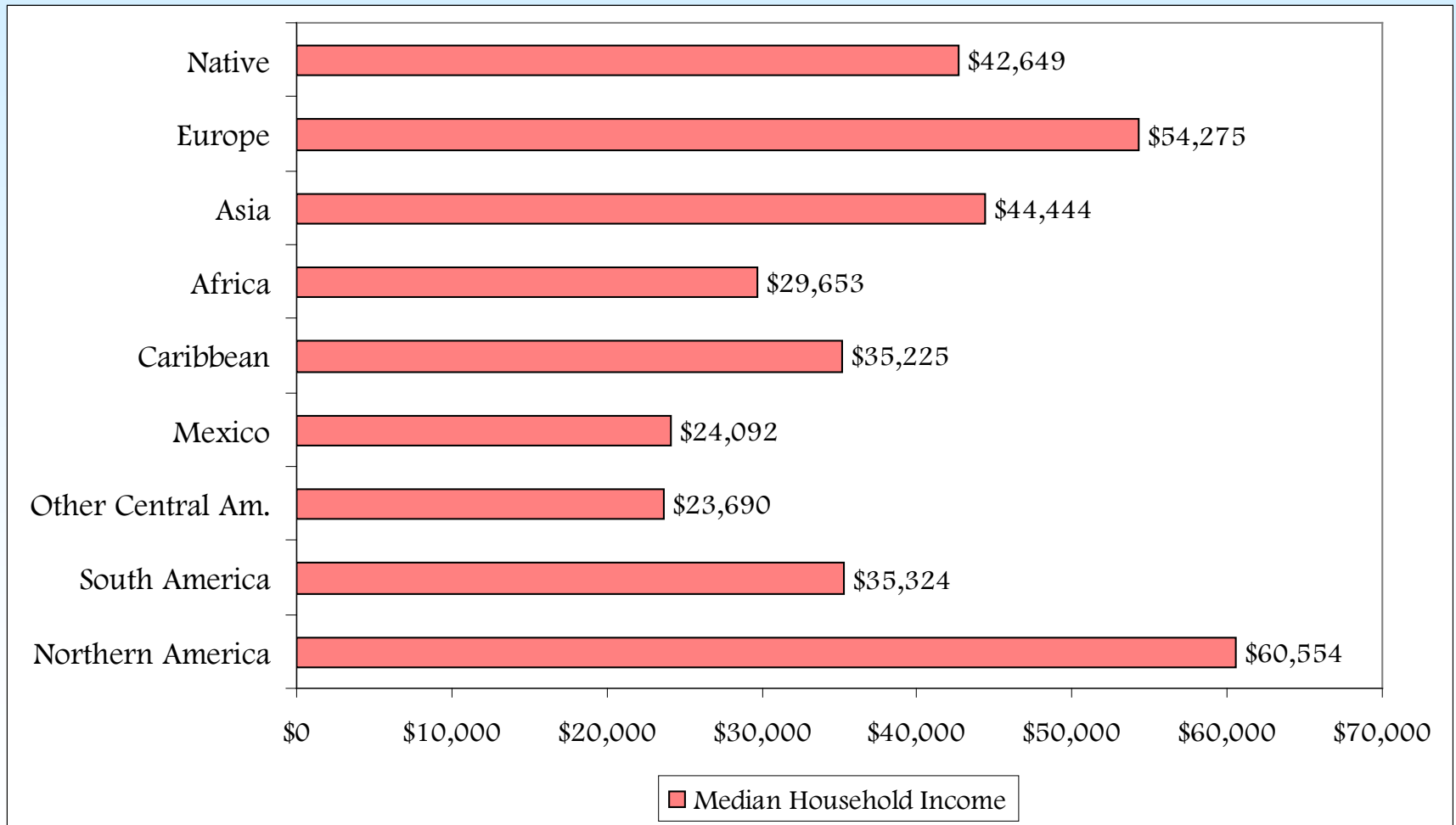
# Educational Attainment of the Population 25 Years Old and Over by Region of Birth: 1998



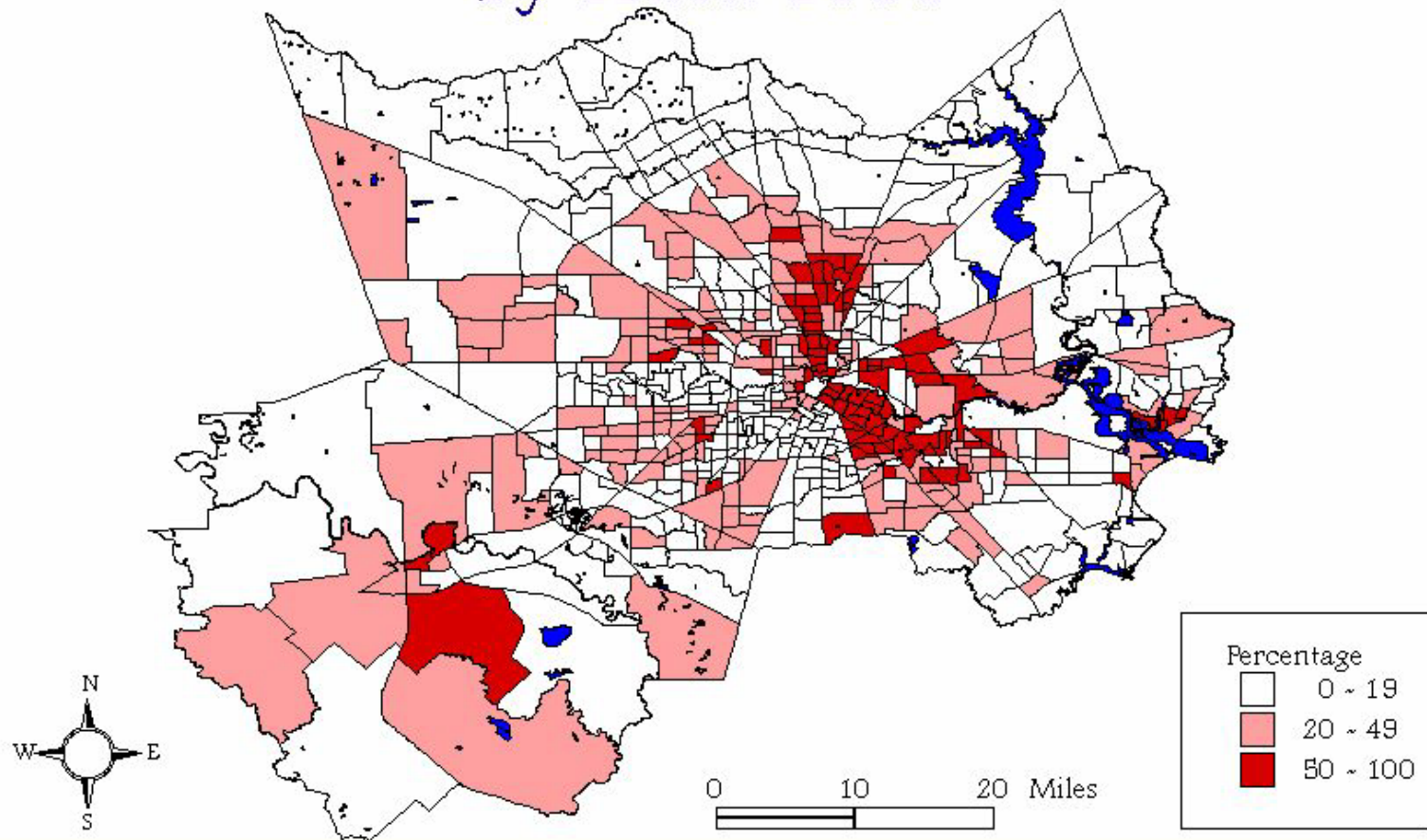
# Median Household Income by Nativity, Length of Residence, and Citizenship Status: 1998



# Median Household Income by Region of Birth: 1998

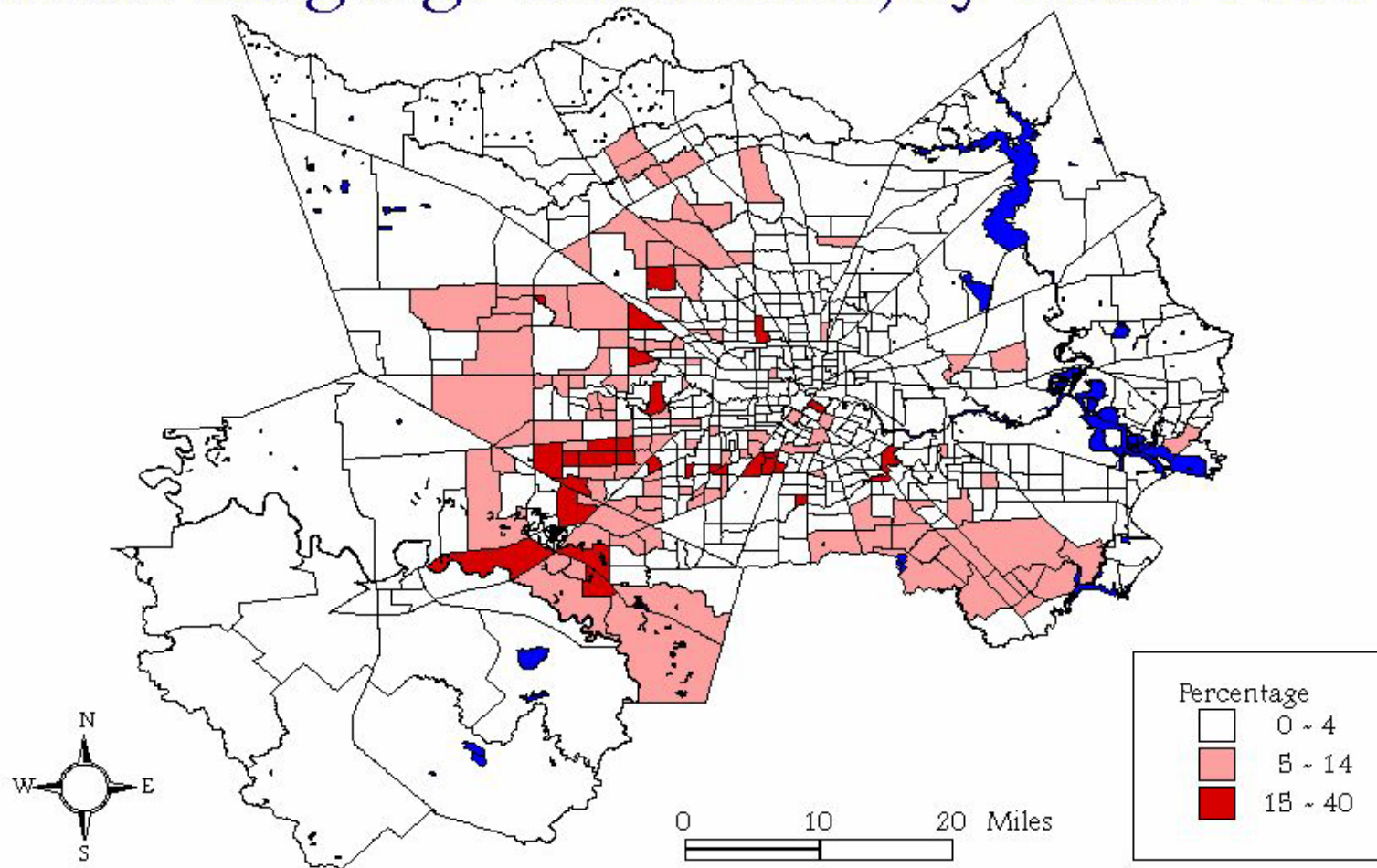


# Fort Bend and Harris Counties, Texas, Spanish Language Households, by Tract: 1998

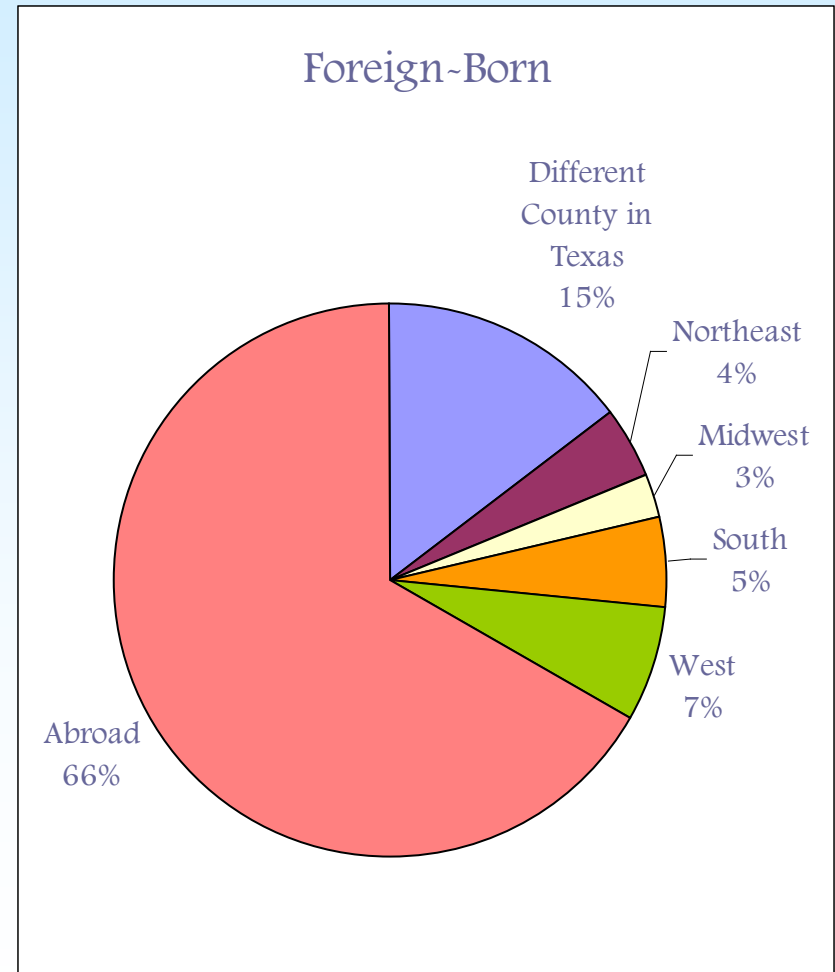
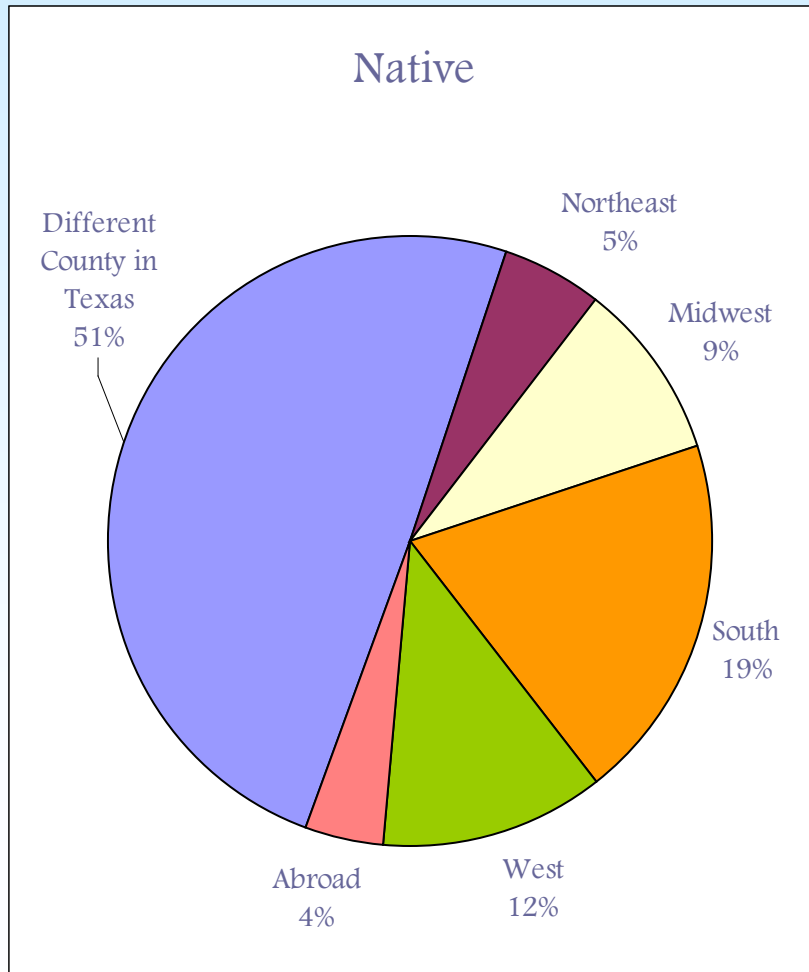




# Fort Bend and Harris Counties, Texas, Asian Language Households, by Tract: 1998



# Residence Five Years Ago for Native and Foreign-Born Inter-County Movers: 1998



# Conclusion

---

- The American Community Survey also provides information for:
  - Distribution of public funding
  - Comparing your community with others
  - Identifying community problems and solutions
  - Location of highways, schools, and hospitals
  - Stimulating economic growth
  - Evaluating programs such as welfare and workforce diversification

# For More Information

---

- American Community Survey Internet site
  - Go to the Census Bureau’s website at [www.census.gov](http://www.census.gov)
  - Click on **Subjects A-Z**
    - Click on **American Community Survey** for information about the survey
    - Click on **American FactFinder** for data tables
      - Click on **Population and Housing Facts**
      - Click on **Detailed Tables**
- Email us at [acs@census.gov](mailto:acs@census.gov)
- Contact Author
  - Bonny M. Berkner, Population Division
  - 301-457-2454
  - [bonny.m.berkner@ccmail.census.gov](mailto:bonny.m.berkner@ccmail.census.gov)