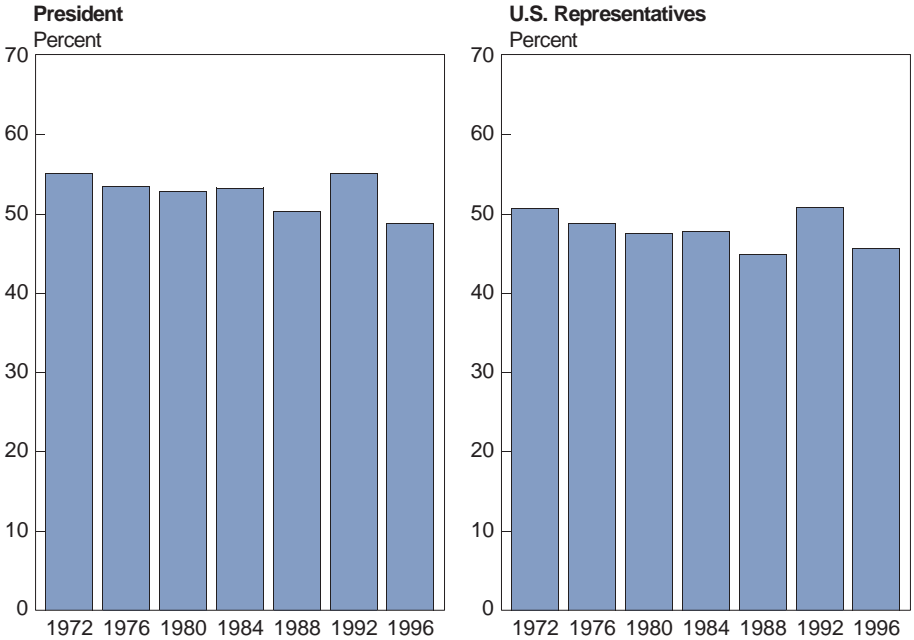
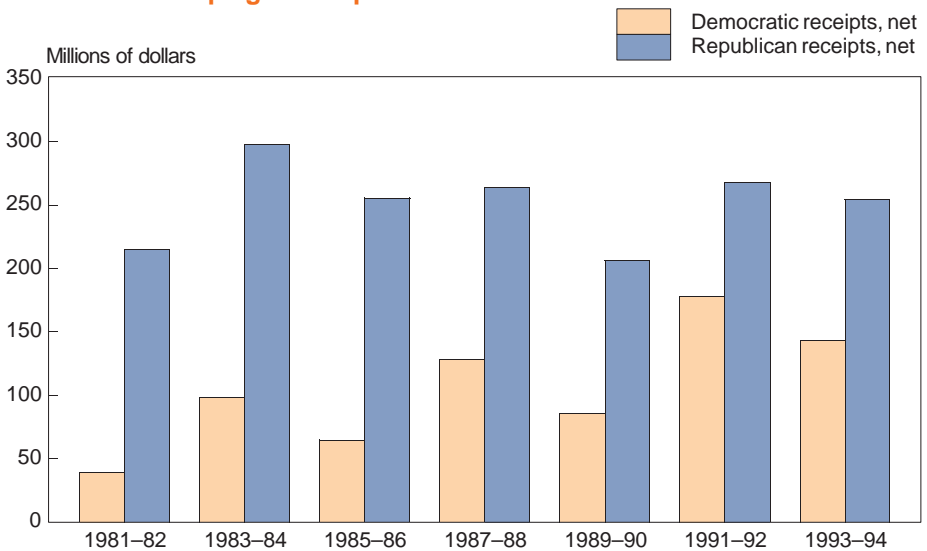


Figure 8.1
**Participation in Elections for President and Representatives—
 Percent of Voting-Age Population: 1972 to 1996**



Source: Chart prepared by U.S. Bureau of the Census. For data, see table 464.

Figure 8.2
Political Campaign Receipts: 1981 to 1994



Source: Chart prepared by U.S. Bureau of the Census. For data, see table 466.

Elections

This section relates primarily to Presidential, congressional, and gubernatorial elections. Also presented are summary tables on congressional legislation; State legislatures; Black, Hispanic, and female officeholders; population of voting age; voter participation; and campaign finances.

Official statistics on Federal elections, collected by the Clerk of the House, are published biennially in *Statistics of the Presidential and Congressional Election* and *Statistics of the Congressional Election*. Federal and State elections data appear also in *America Votes*, a biennial volume published by Congressional Quarterly, Inc., Washington, D.C. Federal elections data also appear in the U.S. Congress, *Congressional Directory*, and in official State documents. Data on reported registration and voting for social and economic groups are obtained by the U.S. Bureau of the Census as part of the Current Population Survey (CPS) and are published in *Current Population Reports*, P20 (see text, section 1).

Almost all Federal, State, and local governmental units in the United States conduct elections for political offices and other purposes. The conduct of elections is regulated by State laws or, in some cities and counties, by local charter. An exception is that the U.S. Constitution prescribes the basis of representation in Congress and the manner of electing the President, and grants to Congress the right to regulate the times, places, and manner of electing Federal officers. Amendments to the Constitution have prescribed national criteria for voting eligibility. The 15th Amendment, adopted in 1870, gave all citizens the right to vote regardless of race, color, or previous condition of servitude. The 19th Amendment, adopted in 1919, further extended the right to vote to all citizens regardless of sex. The payment of poll taxes as a prerequisite to voting in Federal elections was banned by the 24th Amendment in 1964. In 1971, as a result of the 26th Amendment, eligibility to vote in national elections was extended to all citizens, 18 years old and over.

In Brief

Percent of voting-age population voting for Representatives:

1990	33.1%
1996	45.7%

Members of Congress:

	1981	1995
<i>Black</i>	17	41
<i>Asian, Pacific Islander</i>	6	6
<i>Hispanic</i>	6	17
<i>Female</i>	21	55

Presidential election—The Constitution specifies how the President and Vice President are selected. Each State elects, by popular vote, a group of electors equal in number to its total of members of Congress. The 23d Amendment, adopted in 1961, grants the District of Columbia three presidential electors, a number equal to that of the least populous State. Subsequent to the election, the electors meet in their respective States to vote for President and Vice President. Usually, each elector votes for the candidate receiving the most popular votes in his or her State. A majority vote of all electors is necessary to elect the President and Vice President. If no candidate receives a majority, the House of Representatives, with each State having one vote, is empowered to elect the President and Vice President, again, with a majority of votes required.

The 22d Amendment to the Constitution, adopted in 1951, limits presidential tenure to two elective terms of 4 years each, or to one elective term for any person who, upon succession to the Presidency, has held the office or acted as President for more than 2 years.

Congressional election—The Constitution provides that Representatives be apportioned among the States according to their population; that a census of population be taken every 10 years as a basis for apportionment; and that each State have at least one Representative. At the time of each apportionment, Congress

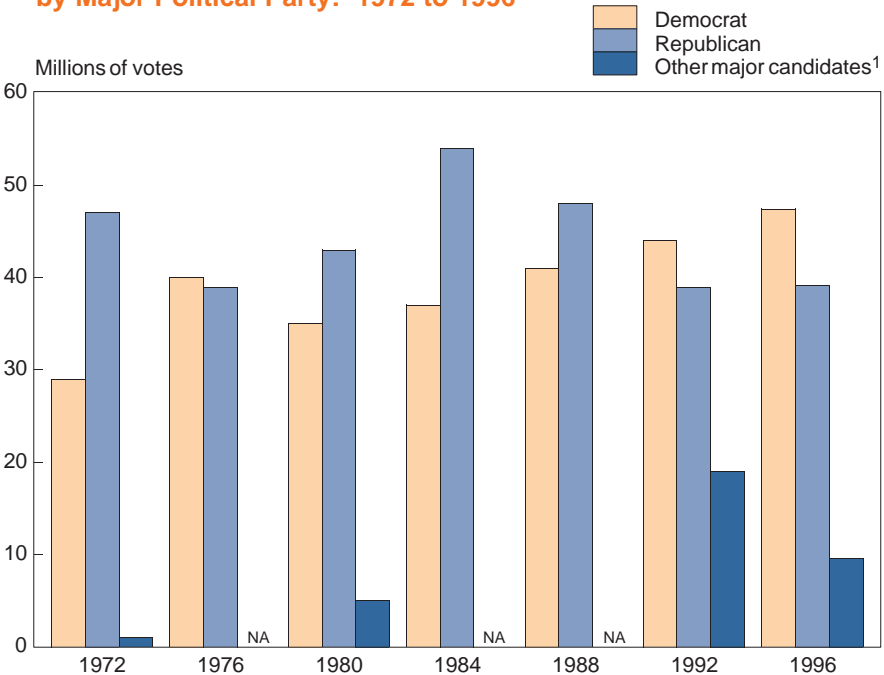
decides what the total number of Representatives will be. Since 1912, the total has been 435, except during 1960 to 1962 when it increased to 437, adding one Representative each for Alaska and Hawaii. The total reverted to 435 after reapportionment following the 1960 census. Members are elected for 2-year terms, all terms covering the same period. The District of Columbia, American Samoa, Guam, and the Virgin Islands each elect one nonvoting Delegate and Puerto Rico elects a nonvoting Resident Commissioner.

The Senate is composed of 100 members, two from each State, who are elected to serve for a term of 6 years. One-third of the Senate is elected every 2 years. Senators were originally chosen by the State legislatures. The 17th Amendment to the Constitution, adopted in 1913, prescribed that Senators be elected by popular vote.

Voter eligibility and participation—The Census Bureau publishes estimates of the population of voting age and the percent casting votes in each State for Presidential and congressional election years. These voting-age estimates include a number of persons who meet the age requirement but are not eligible to vote, (e.g. aliens and some institutionalized persons). In addition, since 1964, voter participation and voter characteristics data have been collected during November of election years as part of the CPS. These survey data include noncitizens in the voting age population estimates, but exclude members of the Armed Forces and the institutional population.

Statistical reliability—For a discussion of statistical collection and estimation, sampling procedures, and measures of statistical reliability applicable to Census Bureau data, see Appendix III.

Figure 8.3
**Popular Vote Cast for President,
 by Major Political Party: 1972 to 1996**



¹ 1972—American, John Schmitz; 1980—Independent, John Anderson; 1992—Independent, Ross Perot; 1996 Reform, Ross Perot, Green, Ralph Nader.

Source: Chart prepared by U.S. Bureau of the Census. For data, see table 437 and 438.

No. 437. Vote Cast for President, by Major Political Party: 1936 to 1996

[Prior to 1960, excludes Alaska and Hawaii; prior to 1964, excludes DC. Vote cast for major party candidates include the votes of minor parties cast for those candidates]

YEAR	CANDIDATES FOR PRESIDENT		VOTE CAST FOR PRESIDENT						
	Democratic	Republican	Total popular vote ¹ (1,000)	Democratic			Republican		
				Popular vote		Elec-toral vote	Popular vote		Elec-toral vote
				Number (1,000)	Per-cent		Number (1,000)	Per-cent	
1936	F. D. Roosevelt	Landon	45,655	27,757	60.8	523	16,684	36.5	8
1940	F. D. Roosevelt	Willkie	49,900	27,313	54.7	449	22,348	44.8	82
1944	F. D. Roosevelt	Dewey	47,977	25,613	53.4	432	22,018	45.9	99
1948	Truman	Dewey	48,794	24,179	49.6	303	21,991	45.1	189
1952	Stevenson	Eisenhower	61,551	27,315	44.4	89	33,936	55.1	442
1956	Stevenson	Eisenhower	62,027	26,023	42.0	73	35,590	57.4	457
1960	Kennedy	Nixon	68,838	34,227	49.7	303	34,108	49.5	219
1964	Johnson	Goldwater	70,645	43,130	61.1	486	27,178	38.5	52
1968	Humphrey	Nixon	73,212	31,275	42.7	191	31,785	43.4	301
1972	McGovern	Nixon	77,719	29,170	37.5	17	47,170	60.7	520
1976	Carter	Ford	81,556	40,831	50.1	297	39,148	48.0	240
1980	Carter	Reagan	86,515	35,484	41.0	49	43,904	50.7	489
1984	Mondale	Reagan	92,653	37,577	40.6	13	54,455	58.8	525
1988	Dukakis	Bush	91,595	41,809	45.6	111	48,886	53.4	426
1992	Clinton	Bush	104,425	44,909	43.0	370	39,104	37.4	168
1996	Clinton	Dole	96,273	47,401	49.2	379	39,197	40.7	159

¹ Include votes for minor party candidates, independents, unpledged electors, and scattered write-in votes.

Source: Congressional Quarterly, Inc., Washington, D.C., *America at the Polls 2*, 1965, and *America Votes*, biennial (copyright).

No. 438. Vote Cast for Leading Minority Party Candidates for President: 1936 to 1996

[See headnote, table 437]

YEAR	Candidate	Party	Popular vote (1,000)	Candidate	Party	Popular vote (1,000)
1936	William Lemke	Union	892	Norman Thomas	Socialist	188
1940	Norman Thomas	Socialist	116	Roger Babson	Prohibition	59
1944	Norman Thomas	Socialist	79	Claude Watson	Prohibition	75
1948	Strom Thurmond	States' Rights	1,176	Henry Wallace	Progressive	1,157
1952	Vincent Hallinan	Progressive	140	Stuart Hamblen	Prohibition	73
1956	T. Coleman Andrews	States' Rights	111	Eric Hass	Socialist Labor	44
1960	Eric Hass	Socialist Labor	48	Rutherford Decker	Prohibition	46
1964	Eric Hass	Socialist Labor	45	Clifton DeBerry	Socialist Workers	33
1968	George Wallace	American Independent	9,906	Henning Blomen	Socialist Labor	53
1972	John Schmitz	American	1,099	Benjamin Spock	People's	79
1976	Eugene McCarthy	Independent	757	Roger McBride	Libertarian	173
1980	John Anderson	Independent	5,720	Ed Clark	Libertarian	921
1984	David Bergland	Libertarian	228	Lyndon H. LaRouche	Independent	79
1988	Ron Paul	Libertarian	432	Lenora B. Fulani	New Alliance	217
1992	H. Ross Perot	Independent	19,742	Andre Marrou	Libertarian	292
1996	H. Ross Perot	Reform Party	8,085	Ralph Nader	Green	685

Source: Congressional Quarterly, Inc. Washington, D.C., *America at the Polls 1920-1996*, 1997; and *America Votes*, biennial (copyright).

No. 439. Democratic and Republican Percentages of Two-Party Presidential Vote, by Selected Characteristics of Voters: 1988 and 1992

[In percent. Covers citizens of voting age living in private housing units in the contiguous United States. Percentages for Democratic Presidential vote are computed by subtracting the percentage Republican vote from 100 percent; third-party or independent votes are not included as valid data. Data are from the National Election Studies and are based on a sample and subject to sampling variability; for details, see source]

CHARACTERISTIC	1988		1992		CHARACTERISTIC	1988		1992	
	Democ-ratic	Repub-lican	Democ-ratic	Repub-lican		Democ-ratic	Repub-lican	Democ-ratic	Repub-lican
Total ¹	47	53	58	42	Race:				
Year of birth:					White	41	59	53	47
1959 or later	48	52	58	42	Black	92	8	94	6
1943 to 1958	47	53	58	42	Education:				
1927 to 1942	49	51	56	44	Grade school	61	39	70	30
1911 to 1926	44	56	62	38	High school	51	49	63	37
1895 to 1910	47	53	58	42	College	42	58	55	45
Sex:					Union household	59	41	68	32
Male	44	56	55	45	Non-union household	44	56	57	43
Female	50	50	61	39					

¹ Includes other characteristics, not shown separately.

Source: Center for Political Studies, University of Michigan, Ann Arbor, MI, unpublished data (copyright).

No. 440. Electoral Vote Cast for President, by Major Political Party—States: 1956 to 1996

[D=Democratic, R=Republican. For composition of regions, see table 27]

REGION, DIVISION, AND STATE	1956 ¹	1960 ²	1964	1968 ³	1972 ⁴	1976 ⁵	1980	1984	1988 ⁶	1992	1996
Democratic	73	303	486	191	17	297	49	13	111	370	379
Republican	457	219	52	301	520	240	489	525	426	168	159
Northeast: Democratic	-	121	126	102	14	86	4	-	53	106	106
Republican	133	12	-	24	108	36	118	113	60	-	-
Midwest: Democratic	13	71	149	31	-	58	10	10	29	100	100
Republican	140	82	-	118	145	87	135	127	108	29	29
South: Democratic	60	101	121	45	3	149	31	3	8	68	80
Republican	105	50	47	77	165	20	138	174	168	116	104
West: Democratic	-	10	90	13	-	4	4	-	21	96	93
Republican	79	75	5	82	102	97	98	111	90	23	26
New England: ME	R-5	R-5	D-4	D-4	R-4	R-4	R-4	R-4	R-4	D-4	D-4
NH	R-4	R-4	D-4	R-4	R-4	R-4	R-4	R-4	R-4	D-4	D-4
VT	R-3	R-3	D-3	R-3	R-3	R-3	R-3	R-3	R-3	D-3	D-3
MA	R-16	D-16	D-14	D-14	D-14	D-14	R-14	R-13	D-13	D-12	D-12
RI	R-4	D-4	D-4	D-4	R-4	D-4	D-4	R-4	D-4	D-4	D-4
CT	R-8	D-8	D-8	D-8	R-8	R-8	R-8	R-8	R-8	D-8	D-8
Middle Atlantic: NY	R-45	D-45	D-43	D-43	R-41	D-41	R-41	R-36	D-36	D-33	D-33
NJ	R-16	D-16	D-17	R-17	R-17	R-17	R-17	R-16	R-16	D-15	D-15
PA	R-32	D-32	D-29	D-29	R-27	D-27	R-27	R-25	R-25	D-23	D-23
East North Central: OH	R-25	R-25	D-26	R-26	R-25	D-25	R-25	R-23	R-23	D-21	D-21
IN	R-13	R-13	D-13	R-13	R-13	R-13	R-13	R-12	R-12	R-12	R-12
IL	R-27	D-27	D-26	R-26	R-26	R-26	R-26	R-24	R-24	D-22	D-22
MI	R-20	D-20	D-21	D-21	R-21	R-21	R-21	R-20	R-20	D-18	D-18
WI	R-12	R-12	D-12	R-12	R-11	D-11	R-11	R-11	D-11	D-11	D-11
West North Central: MN	R-11	D-11	D-10	D-10	R-10	D-10	D-10	D-10	D-10	D-10	D-10
IA	R-10	R-10	D-9	R-9	R-8	R-8	R-8	R-8	D-8	D-7	D-7
MO	D-13	D-13	D-12	R-12	R-12	D-12	R-12	R-11	R-11	D-11	D-11
ND	R-4	R-4	D-4	R-4	R-3	R-3	R-3	R-3	R-3	R-3	R-3
SD	R-4	R-4	D-4	R-4	R-4	R-4	R-4	R-3	R-3	R-3	R-3
NE	R-6	R-6	D-5	R-5	R-5	R-5	R-5	R-5	R-5	R-5	R-5
KS	R-8	R-8	D-7	R-7	R-7	R-7	R-7	R-7	R-7	R-6	R-6
South Atlantic: DE	R-3	D-3	D-3	R-3	R-3	D-3	R-3	R-3	R-3	D-3	D-3
MD	R-9	D-9	D-10	D-10	R-10	D-10	D-10	R-10	R-10	D-10	D-10
DC	(X)	(X)	D-3	D-3	D-3	D-3	D-3	D-3	D-3	D-3	D-3
VA	R-12	R-12	D-12	R-12	⁴ R-11	R-12	R-12	R-12	R-12	R-13	R-13
WV	R-8	D-8	D-7	D-7	R-6	D-6	D-6	⁵ D-5	D-5	D-5	D-5
NC	D-14	D-14	D-13	³ R-12	R-13	D-13	R-13	R-13	R-13	R-14	R-14
SC	D-8	D-8	R-8	R-8	R-8	D-8	R-8	R-8	R-8	R-8	R-8
GA	D-12	D-12	R-12	⁽³⁾ R-12	D-12	D-12	D-12	R-12	R-12	D-13	R-13
FL	R-10	R-10	D-14	R-14	R-17	D-17	R-17	R-21	R-21	R-25	D-25
East South Central: KY	R-10	R-10	D-9	R-9	R-9	D-9	R-9	R-9	R-9	D-8	D-8
TN	R-11	R-11	D-11	R-11	R-10	D-10	R-10	R-11	R-11	D-11	D-11
AL	¹ D-10	² D-5	R-10	⁽³⁾ R-10	R-9	D-9	R-9	R-9	R-9	R-9	R-9
MS	D-8	⁽²⁾ D-5	R-7	⁽³⁾ R-7	R-7	D-7	R-7	R-7	R-7	R-7	R-7
West South Central: AR	D-8	D-8	D-6	⁽³⁾ D-6	R-6	D-6	R-6	R-6	R-6	D-6	D-6
LA	R-10	D-10	R-10	⁽³⁾ R-10	R-10	D-10	R-10	R-10	R-10	D-9	D-9
OK	R-8	² R-7	D-8	R-8	R-8	R-8	R-8	R-8	R-8	R-8	R-8
TX	R-24	D-24	D-25	D-25	R-26	D-26	R-26	R-29	R-29	R-32	R-32
Mountain: MT	R-4	R-4	D-4	R-4	R-4	R-4	R-4	R-4	R-4	D-3	R-3
ID	R-4	R-4	D-4	R-4	R-4	R-4	R-4	R-4	R-4	R-4	R-4
WY	R-3	R-3	D-3	R-3	R-3	R-3	R-3	R-3	R-3	R-3	R-3
CO	R-6	R-6	D-6	R-6	R-7	R-7	R-7	R-7	R-8	D-8	R-8
NM	R-4	D-4	D-4	R-4	R-4	R-4	R-4	R-5	R-5	D-5	D-5
AZ	R-4	R-4	R-5	R-5	R-6	R-6	R-6	R-7	R-7	R-8	D-8
UT	R-4	R-4	D-4	R-4	R-4	R-4	R-4	R-5	R-5	R-5	R-5
NV	R-3	D-3	D-3	R-3	R-3	R-3	R-3	R-4	R-4	D-4	D-4
Pacific: WA	R-9	R-9	D-9	D-9	R-9	⁵ R-8	R-9	R-10	D-10	D-11	D-11
OR	R-6	R-6	D-6	R-6	R-6	R-6	R-6	R-7	D-7	D-7	D-7
CA	R-32	R-32	D-40	R-40	R-45	R-45	R-45	R-47	R-47	D-54	D-54
AK	(X)	R-3	D-3	R-3	R-3	R-3	R-3	R-3	R-3	R-3	R-3
HI	(X)	(X)	D-4	D-4	R-4	D-4	R-4	R-4	D-4	D-4	D-4

- Represents zero. X Not applicable. ¹ Excludes one electoral vote cast for Walter B. Jones in Alabama. ² Excludes 15 electoral votes cast for Harry F. Byrd as follows: AL 6, MS 8, and OK 1. ³ Excludes 46 electoral votes cast for American Independent George C. Wallace as follows: AL 10, AR 6, GA 12, LA 10, MS 7, and NC 1. ⁴ Excludes one electoral vote cast for Libertarian John Hospers in Virginia. ⁵ Excludes one electoral vote cast for Ronald Reagan in Washington. ⁶ Excludes one electoral vote cast for Lloyd Bentsen for President in West Virginia.

Source: 1952-72, U.S. Congress, Clerk of the House, *Statistics of the Presidential and Congressional Election*, quadrennial; 1976-96, Congressional Quarterly, Inc., Washington D.C. *America Votes*, biennial (copyright).

No. 441. Popular Vote Cast for President, by Political Party—States: 1992 and 1996

[In thousands, except percent]

REGION, DIVISION, AND STATE	1992				1996				Percent of total vote		
	Total ¹	Democratic Party	Republican Party	Percent for leading party ²	Total ¹	Democratic Party	Republican Party	Perot (Inde- pendent)	Democratic Party	Republican Party	Perot (Inde- pendent)
United States.	104,425	44,909	39,104	19,742	96,273	47,401	39,197	8,085	49.2	40.7	8.4
Northeast.	21,581	9,940	7,507	3,994	19,601	10,862	6,607	1,772	55.4	33.7	9.0
N.E.	6,351	2,820	2,012	1,479	5,703	3,237	1,769	576	56.8	31.0	10.1
ME	679	263	207	207	606	313	186	86	51.6	30.8	14.2
NH	538	209	202	121	499	246	196	48	49.3	39.4	9.7
VT	290	134	88	66	258	138	80	31	53.4	31.1	12.0
MA	2,774	1,319	805	631	2,556	1,572	718	227	61.5	28.1	8.9
RI	453	213	132	105	390	233	105	44	59.7	26.8	11.2
CT	1,616	682	578	349	1,393	736	483	140	52.8	34.7	10.0
M.A.	15,230	7,120	5,495	2,515	13,898	7,624	4,838	1,196	54.9	34.8	8.6
NY	6,927	3,444	2,347	1,091	6,316	3,756	1,933	503	59.5	30.6	8.0
NJ	3,344	1,436	1,357	522	3,076	1,652	1,103	262	53.7	35.9	8.5
PA	4,960	2,239	1,792	903	4,506	2,216	1,801	431	49.2	40.0	9.6
Midwest.	27,735	11,692	10,234	5,668	24,953	12,076	10,151	2,426	48.4	40.7	9.7
E.N.C.	19,102	8,199	7,104	3,702	17,026	8,439	6,780	1,618	49.6	39.8	9.5
OH	4,940	1,985	1,894	1,036	4,534	2,148	1,860	483	47.4	41.0	10.7
IN	2,306	848	989	456	2,135	887	1,007	224	41.6	47.1	10.5
IL	5,050	2,453	1,734	841	4,311	2,342	1,587	346	54.3	36.8	8.0
MI	4,275	1,871	1,555	825	3,849	1,990	1,481	337	51.7	38.5	8.7
WI	2,531	1,041	931	544	2,196	1,072	845	227	48.8	38.5	10.4
W.N.C.	8,633	3,493	3,130	1,966	7,927	3,637	3,371	808	45.9	42.5	10.2
MN	2,348	1,021	748	563	2,193	1,120	766	258	51.1	35.0	11.8
IA	1,355	586	505	253	1,234	620	493	105	50.3	39.9	8.5
MO	2,392	1,054	811	519	2,158	1,026	890	217	47.5	41.2	10.1
ND	308	99	136	71	266	107	125	33	40.1	46.9	12.2
SD	336	125	137	73	324	139	151	31	43.0	46.5	9.7
NE	738	217	344	174	677	237	363	71	35.0	53.7	10.5
KS	1,157	390	450	312	1,074	388	583	93	36.1	54.3	8.6
South	33,625	14,118	14,014	5,325	31,755	14,850	14,346	2,315	46.8	45.2	7.3
S.A.	17,195	7,352	7,103	2,667	16,558	7,897	7,294	1,242	47.7	44.1	7.5
DE	290	126	102	59	271	140	99	29	51.8	36.6	10.6
MD	1,985	989	707	281	1,781	966	682	116	54.3	38.3	6.5
DC	228	193	21	10	186	158	17	4	85.2	9.3	1.9
VA	2,559	1,039	1,151	349	2,417	1,091	1,138	160	45.1	47.1	6.6
WV	684	331	242	109	636	328	234	72	51.5	36.8	11.3
NC	2,612	1,114	1,135	358	2,516	1,108	1,226	168	44.0	48.7	6.7
SC	1,203	480	578	139	1,151	506	573	64	44.0	49.8	5.6
GA	2,321	1,009	995	310	2,299	1,054	1,081	146	45.8	47.0	6.4
FL	5,314	2,073	2,173	1,053	5,301	2,546	2,243	484	48.0	42.3	9.1
E.S.C.	6,145	2,689	2,751	673	5,711	2,602	2,696	371	45.6	47.2	6.5
KY	1,493	665	617	204	1,389	637	623	120	45.8	44.9	8.7
TN	1,983	934	841	200	1,894	909	864	106	48.0	45.6	5.6
AL	1,688	690	804	183	1,534	662	769	92	43.2	50.1	6.0
MS	982	400	488	86	894	394	440	52	44.1	49.2	5.8
W.S.C.	10,285	4,077	4,160	1,985	9,487	4,351	4,356	703	45.9	45.9	7.4
AR	951	506	337	99	884	475	325	70	53.7	36.8	7.9
LA	1,790	816	733	211	1,784	928	713	123	52.0	39.9	6.9
OK	1,390	473	593	320	1,207	488	582	131	40.4	48.3	10.8
TX	6,154	2,282	2,496	1,355	5,612	2,460	2,736	379	43.8	48.8	6.7
West	21,484	9,160	7,349	4,755	19,964	9,613	8,093	1,572	48.2	40.5	7.9
Mountain	5,970	2,167	2,272	1,437	5,711	2,435	2,649	498	42.6	46.4	8.7
MT	411	155	144	107	407	168	180	55	41.3	44.1	13.6
ID	482	137	203	130	492	165	257	63	33.6	52.2	12.7
WY	201	68	79	51	212	78	105	26	36.8	49.8	12.3
CO	1,569	630	563	366	1,511	671	692	100	44.4	45.8	6.6
NM	570	262	213	92	556	273	233	32	49.2	41.9	5.8
AZ	1,487	543	572	354	1,404	653	622	112	46.5	44.3	8.0
UT	744	183	323	203	666	222	362	66	33.3	54.4	10.0
NV	506	189	176	133	464	204	199	44	43.9	42.9	9.5
Pacific	15,514	6,993	5,078	3,318	14,253	7,178	5,444	1,074	50.4	38.2	7.5
WA	2,288	993	731	542	2,254	1,123	841	201	49.8	37.3	8.9
OR	1,463	621	476	354	1,378	650	538	121	47.2	39.1	8.8
CA	11,132	5,121	3,631	2,296	10,019	5,120	3,828	698	51.1	38.2	7.0
AK	259	78	102	73	242	80	123	26	33.3	50.8	10.9
HI	373	179	137	53	360	205	114	27	56.9	31.6	7.6

NA Not available. ¹ Includes other parties. ² D=Democratic, R=Republican. Leading party vote refers to the party vote representing either a majority or a plurality for the victorious party in the area shown.

Source: Congressional Quarterly, Inc., Washington, DC. *America Votes*, biennial (copyright).

No. 442. Vote Cast for United States Senators, 1994 and 1996, and Incumbent Senators, 1996—States

[D=Democrat; R=Republican]

DIVISION AND STATE	1994 ¹		1996 ¹		INCUMBENT SENATORS AND YEAR TERM EXPIRES	
	Total (1,000)	Percent for leading party	Total (1,000)	Percent for leading party	Name, party, and year	Name, party, and year
N.E.:						
ME	511	R-60.3	607	R-49.2	Susan Collins (R) 2003	Olympia Snowe (R) 2001
NH	(X)	(X)	493	R-49.2	Judd Gregg (R) 1999	Robert C. Smith (R) 2003
VT	212	R-50.3	(X)	(X)	Patrick J. Leahy (D) 1999	James M. Jeffords (R) 2001
MA	2,179	D-58.1	2,556	D-52.2	Edward M. Kennedy (D) 2001	John F. Kerry (D) 2003
RI	345	R-64.5	363	D-63.5	Jack Reed (D) 2003	John H. Chafee (R) 2001
CT	1,080	D-67.0	(X)	(X)	Christopher J. Dodd (D) 1999	Joseph I. Lieberman (D) 2003
M.A.:						
NY	4,790	D-55.2	(X)	(X)	Daniel P. Moynihan (D) 2001	Alfonse M. D'Amato (R) 1999
NJ	2,055	D-50.3	2,884	D-52.5	Robert G. Torricelli (D) 2003	Frank R. Lautenberg (D) 2003
PA	3,513	R-49.4	(X)	(X)	Rick Santorum (R) 2001	Arlen Specter (R) 1999
E.N.C.:						
OH	3,437	R-53.4	(X)	(X)	John Glenn (D) 1999	Mike DeWine (R) 2001
IN	1,544	R-67.4	(X)	(X)	Dan Coats (R) 1999	Richard G. Lugar (R) 2001
IL	(X)	(X)	4,251	D-55.8	Carol Moseley Braun (D) 1999	Richard J. Durbin (D) 2003
MI	3,043	R-51.9	3,763	D-58.4	Carl Levin (D) 2003	Spencer Abraham (R) 2001
WI	1,565	D-58.3	(X)	(X)	Herb Kohl (D) 2001	Russell Feingold (D) 1999
W.N.C.:						
MN	1,773	R-49.1	2,183	D-50.3	Paul David Wellstone (D) 2003	Rod Grams (R) 2001
IA	(X)	(X)	1,224	D-51.8	Tom Harkin (D) 2003	Charles E. Grassley (R) 1999
MO	1,775	R-59.7	(X)	(X)	Christopher S. Bond (R) 1999	John Ashcroft (R) 2001
ND	237	D-58.0	(X)	(X)	Byron L. Dorgan (D) 1999	Kent Conrad (D) 2001
SD	(X)	(X)	325	D-51.3	Thomas A. Daschle (D) 1999	Tim Johnson (D) 2003
NE	579	D-54.8	677	R-56.1	Chuck Hagel (R) 2003	J. Robert Kerrey (D) 2001
KS	(X)	(X)	² 1,065	R-53.8	Sam Brownback (R) 1999	Pat Roberts (R) 2003
S.A.:						
DE	199	R-55.8	276	D-60.0	Joseph R. Biden Jr. (D) 2003	William V. Roth, Jr. (R) 2003
MD	1,369	D-59.1	(X)	(X)	Barbara A. Mikulski (D) 1999	Paul S. Sarbanes (D) 2001
VA	2,057	D-45.6	2,355	R-52.5	Charles S. Robb (D) 2001	John W. Warner (R) 2003
WV	421	D-69.0	596	D-76.6	Robert C. Byrd (D) 2001	John D. Rockefeller IV (D)
NC	(X)	(X)	2,557	R-52.6	Lauch Faircloth (R) 1999	Jesse Helms (R) 2003
SC	(X)	(X)	1,161	R-53.4	Ernest F. Hollings (D) 1999	Strom Thurmond (R) 2003
GA	(X)	(X)	2,259	D-48.8	Paul Coverdell (R) 1999	Max Cleland (D) 2003
FL	4,105	R-70.5	(X)	(X)	Bob Graham (D) 1999	Connie Mack (R) 2001
E.S.C.:						
KY	(X)	(X)	1,307	R-55.5	Wendell H. Ford (D) 1999	Mitch McConnell (R) 2003
TN	³ 1,480	³ R-56.4	1,779	R-61.4	Fred Thompson (R) 2003	Bill Frist (R) 2001
AL	(X)	(X)	1,499	R-51.9	Jeff Sessions (R) 2003	Richard C. Shelby (R) 1999
MS	608	R-68.8	879	R-71.0	Thad Cochran (R) 2003	Trent Lott (R) 2001
W.S.C.:						
AR	(X)	(X)	846	R-52.7	Dale Bumpers (D) 1999	Tim Hutchinson (R) 2003
LA	(X)	(X)	⁴ 1,700	D-50.2	John B. Breaux (D) 1999	Mary Landrieu (D) 2003
OK	982	R-55.2	(X)	(X)	James Inhofe (R) 2001	Don Nickles (R) 1999
TX	4,280	R-60.8	5,527	R-54.8	Kay Bailey Hutchison (R) 2001	Phil Gramm (R) 2003
Mountain:						
MT	350	R-62.4	407	D-49.6	Max Baucus (D) 2003	Conrad Burns (R) 2001
ID	(X)	(X)	497	R-57.0	Larry E. Craig (R) 2003	Dirk Kempthorne (R) 1999
WY	202	R-58.9	211	R-54.1	Mike Enzi (R) 2003	Craig Thomas (R) 2001
CO	(X)	(X)	1,470	R-50.7	Ben N. Campbell (R) 1999	Wayne Allard (R) 2003
NM	463	D-54.0	552	R-64.7	Jeff Bingaman (D) 2001	Pete V. Domenici (R) 2003
AZ	1,119	R-53.7	(X)	(X)	John McCain (R) 1999	Jon Kyl (R) 2001
UT	519	R-68.8	(X)	(X)	Robert F. Bennett (R) 1999	Orrin G. Hatch (R) 2001
NV	368	D-52.7	(X)	(X)	Harry Reid (D) 1999	Richard H. Bryan (D) 2001
Pacific:						
WA	1,700	R-55.7	(X)	(X)	Patty Murray (D) 1999	Slade Gorton (R) 2001
OR	⁵ 1,190	⁵ D-48.4	1,360	R-48.8	Gordon Smith (R) 2003	Ron Wyden (D) 1999
CA	8,503	D-46.8	(X)	(X)	Barbara Boxer (D) 1999	Dianne Feinstein (D) 2001
AK	(X)	(X)	232	R-76.7	Frank H. Murkowski (R) 1999	Ted Stevens (R) 2003
HI	357	D-71.8	(X)	(X)	Daniel K. Akaka (D) 2001	Daniel K. Inouye (D) 1999

X Not applicable. ¹ Includes vote cast for minor parties. ² Kansas had elections to fill two Senate seats in 1996. Pat Roberts was elected to fill the full-term seat vacated by the retiring Nancy Kassenbaum, Sam Brownback was elected to fill the short-term seat vacated by Robert Dole, who resigned in 1996 to run for president. ³ In a special election in 1994 to fill an unexpired term, the Republican candidate received 60.4 percent of 1,465,835 total votes cast. ⁴ Louisiana holds an open-primary election with candidates from all parties running on the same ballot. Any candidate who receives a majority is elected. ⁵ Special election in January 1996 to fill the unexpired term of Senator Packwood.

Source: Congressional Quarterly, Inc., Washington, D.C. *America Votes*, biennial (copyright).

No. 443. Vote Cast for U.S. Representatives, by Major Political Party—States: 1990 to 1996

[In thousands, except percent. In each State, totals represent the sum of votes cast in each Congressional District or votes cast for Representative at Large in States where only one member is elected. In all years there are numerous districts within the State where either the Republican or Democratic party had no candidate. In some States the Republican and Democratic vote includes votes cast for the party candidate by endorsing parties]

REGION, DIVISION, AND STATE	1990				1994				1996			
	Total ¹	Democrat	Republican	Percent for leading party	Total ¹	Democrat	Republican	Percent for leading party	Total ¹	Democrat	Republican	Percent for leading party
U.S. ² . . .	61,513	32,565	27,648	D-52.9	69,770	31,698	36,590	R-52.4	89,647	43,690	43,629	D-48.7
Northeast . . .	12,792	6,483	5,868	D-50.7	14,398	7,016	6,927	D-48.7	18,097	9,788	7,770	D-54.1
ME	517	284	233	D-55.0	503	236	234	D-47.0	600	379	211	D-63.2
NH	291	141	149	R-51.2	309	117	180	R-58.2	491	221	247	R-50.3
VT	210	6	83	³ -56.0	211	-	99	³ -49.9	255	24	83	³ -58.1
MA	2,051	1,420	567	D-69.2	1,976	1,363	593	D-69.0	2,407	1,584	780	D-65.8
RI	347	182	165	D-52.5	342	209	132	D-61.3	360	241	108	D-66.9
CT	1,037	489	546	R-52.6	1,069	506	516	R-48.3	1,294	724	547	D-55.9
M.A.	8,339	3,959	4,126	R-47.1	9,987	4,585	5,173	R-51.8	12,690	6,616	5,794	D-52.1
NY ⁴	3,662	1,830	1,662	D-50.0	4,611	2,213	2,251	R-48.8	5,551	3,041	2,358	D-54.8
NJ	1,827	837	911	R-49.9	2,005	880	1,091	R-54.4	2,823	1,352	1,399	R-49.6
PA	2,851	1,293	1,552	R-54.5	3,371	1,492	1,831	R-54.3	4,316	2,223	2,038	D-51.5
E.N.C.	11,699	6,202	5,363	D-53.0	12,348	5,421	6,803	R-55.1	16,447	8,187	7,913	D-49.8
OH	3,418	1,807	1,590	D-52.9	3,298	1,328	1,925	R-58.4	4,389	2,031	2,192	R-49.9
IN	1,514	831	683	D-54.9	1,546	667	875	R-56.6	2,082	931	1,109	R-53.3
IL	3,077	1,646	1,349	D-53.5	3,044	1,460	1,577	R-51.8	4,128	2,268	1,813	D-54.9
MI	2,434	1,321	1,089	D-54.3	3,001	1,418	1,532	R-51.0	3,699	1,945	1,679	D-52.6
WI	1,256	597	652	R-51.9	1,459	548	893	R-61.2	2,149	1,013	1,121	R-52.1
W.N.C.	5,785	3,168	2,607	D-54.8	6,420	2,992	3,344	R-52.1	7,755	3,723	3,720	D-50.0
IN	1,781	1,042	736	D-58.5	1,748	884	847	D-50.6	2,142	1,180	895	D-55.1
IA	792	401	385	D-50.6	977	407	560	R-57.3	1,200	533	650	R-54.1
MO	1,353	728	625	D-53.8	1,766	894	834	D-50.6	² 2,116	1,116	833	D-52.8
ND	234	153	81	D-65.2	235	123	106	D-52.3	263	145	114	D-55.1
SD	257	174	83	D-67.6	306	183	112	D-59.8	323	120	186	R-57.7
NE	587	277	309	R-52.7	571	203	365	R-64.0	662	205	450	R-68.0
KS	781	394	387	D-50.4	817	298	519	R-63.5	1,049	425	591	R-56.4
S.A. ²	9,409	5,222	4,063	D-55.5	10,660	4,566	6,017	R-56.4	15,052	6,964	7,942	R-52.8
DE	177	116	58	D-65.5	195	52	138	R-70.7	267	73	186	R-69.5
MD	1,091	566	517	D-51.9	1,345	662	683	R-50.7	1,639	877	762	D-53.5
DC	160	98	42	D-61.7	(NA)	(NA)	(NA)	(NA)	(NA)	(NA)	(NA)	(NA)
VA	1,153	663	411	D-57.5	1,908	753	1,089	R-57.1	2,199	1,027	1,117	R-50.8
WV	375	251	123	D-67.1	407	269	138	D-66.1	522	459	64	D-87.8
NC	2,011	1,076	935	D-53.5	1,588	681	907	R-57.1	2,514	1,136	1,340	R-53.3
SC	670	383	275	D-57.2	867	313	552	R-63.6	1,057	345	683	R-64.6
GA	1,394	855	539	D-61.3	1,498	681	816	R-54.5	2,163	1,011	1,152	R-53.3
FL ⁶	2,378	1,213	1,163	D-51.0	2,852	1,156	1,694	R-59.4	4,691	2,037	2,639	R-56.3
E.S.C.	2,866	1,712	1,070	D-59.7	3,936	1,839	2,041	R-51.9	5,394	2,417	2,893	R-53.6
KY	764	353	397	R-52.0	784	316	451	R-57.5	1,238	507	731	R-59.0
TN	717	369	289	D-51.5	1,416	615	776	R-54.8	1,783	857	889	R-49.8
AL	1,017	690	315	D-67.9	1,115	554	558	R-50.1	1,469	656	786	R-53.5
MS	369	299	69	D-81.2	620	354	256	D-57.1	904	397	488	R-54.0
W.S.C.	4,906	2,758	2,132	D-56.2	5,798	2,438	3,222	R-55.6	7,738	3,489	4,100	R-53.0
AR ⁶	665	369	296	D-55.5	709	336	373	R-52.6	863	396	456	R-52.8
LA ⁸	106	106	-	D-100.0	(X)	(X)	(X)	(X)	475	339	136	D-71.4
OK	857	519	338	D-60.6	969	368	555	R-57.3	1,180	431	723	R-61.3
TX ⁹	3,278	1,763	1,498	D-53.8	4,120	1,734	2,294	R-55.7	5,220	2,323	2,785	R-53.4
Mountain . . .	3,872	1,783	2,043	R-52.8	4,438	1,706	2,580	R-58.1	5,588	2,280	3,147	R-56.3
MT	317	157	160	R-50.5	352	171	149	D-48.7	404	175	212	R-52.4
ID	315	183	131	D-58.2	393	138	255	R-65.0	494	194	290	R-58.7
WY	158	71	87	R-55.1	196	81	104	R-53.2	210	86	116	R-55.2
CO	1,001	504	487	D-50.3	1,056	364	687	R-65.1	1,461	597	833	R-57.0
NM	359	146	214	R-59.5	462	188	263	R-57.1	548	271	261	D-49.0
AZ	966	345	621	R-64.3	1,099	410	653	R-59.4	1,356	521	801	R-59.4
UT	442	234	191	D-52.9	504	216	252	R-50.0	664	264	386	R-58.2
NV	313	144	151	R-48.2	376	138	216	R-57.4	450	173	249	R-55.3
Pacific	10,185	5,239	4,502	D-51.4	11,771	5,719	5,657	D-48.6	13,577	6,842	6,144	D-50.0
WA	1,313	696	596	D-53.0	1,687	827	854	R-50.6	2,174	1,130	1,021	D-52.4
OR	1,053	667	342	D-63.4	1,193	647	499	D-54.2	1,335	725	558	D-54.3
CA	7,287	3,568	3,347	D-49.0	8,328	3,958	4,066	R-48.8	9,481	4,707	4,292	D-49.6
AK	192	92	99	R-51.7	208	68	119	R-56.9	234	85	139	R-59.4
HI	341	216	118	D-63.3	354	219	120	D-61.9	353	196	136	D-55.5

- Represents zero. NA Not available. X Not applicable. ¹ Includes vote cast for minor parties. Total for 1996 includes results from 431 districts, including 14 where members were elected without major party opposition. In 4 districts candidates ran unopposed and no vote was recorded. ² Includes vote cast for nonvoting Delegate at Large in District of Columbia, except for 1994 and 1996. ³ Leading party candidate was Independent. ⁴ Includes votes cast by other endorsing parties. ⁵ Total vote includes 112,472 votes cast for an Independent candidate. This candidate won the election and joined Congress as a Republican. ⁶ State law does not require tabulation of votes for unopposed candidates. ⁷ In 1990 Districts 8, 10, 12, 13, and 16 were unopposed; in 1994 Districts 4, 10, 13, 14, 18, and 23 were unopposed; in 1996 District 4 was unopposed. ⁸ 1990 data are for a general election runoff in one district. In 1994 all Representatives won their seats in the open primary. In 1996, Districts 1, 2, and 3 were unopposed. Districts 4 and 6 were contested in the September primary election but the Republican candidate in both won a majority and did not have to run again in the November general election. In Districts 5 and 7 no candidate in the primary won a majority; as a result the top two finishers in the primary ran in the general election. 1996 data are for general election runoffs in these two districts. 1996 open primary totals-total, 660,000; Democratic 398,000 and Republican, 262,000. ⁹ Total includes votes from races held on November 5. Court-ordered redistricting in the Houston area, however, required runoff elections in three districts where no candidate received a majority. Those runoffs were held December 5; they are not included in the total vote count reported here.

No. 444. Vote Cast for United States Representatives, by Major Political Party— Congressional Districts: 1996

[In some States the Democratic and Republican vote includes votes cast for the party candidate by endorsing parties]

STATE AND DISTRICT	DEMOCRATIC CANDIDATE		REPUBLICAN CANDIDATE		STATE AND DISTRICT	DEMOCRATIC CANDIDATE		REPUBLICAN CANDIDATE	
	Name	Percent of total	Name	Percent of total		Name	Percent of total	Name	Percent of total
AL	(X)	(X)	(X)	(X)	46th . . .	Sanchez . . .	46.1	Dorman . . .	46.4
1st	Womack . . .	33.9	Callahan . . .	64.5	47th . . .	Laine	29.1	Cox	65.3
2d	Gaines . . .	35.5	Everett . . .	63.3	48th . . .	Farrell . . .	27.3	Packard . . .	65.4
3d	Little	46.9	Riley	50.9	49th . . .	Navarro . . .	42.5	Bilbray . . .	52.0
4th	Wilson . . .	48.3	Aderholt . . .	50.0	50th . . .	Filner	62.1	Baize	32.1
5th	Cramer . . .	56.1	Parker	41.8				Cun- ningham . . .	64.7
6th	Bates	27.4	Bachus	70.9	51st . . .	Tamerius . . .	29.3	Hunter	65.1
7th	Hilliard . . .	71.2	Powell	27.1	52d . . .	Wesley	30.0		
AK	Lincoln . . .	37.1	Young	59.1	CO	(X)	(X)	(X)	(X)
AZ	(X)	(X)	(X)	(X)	1st	DeGette . . .	56.9	Rogers	40.2
1st	Cox	40.1	Salmon	59.9	2d	Skaggs	57.0	Miller	38.3
2d	Pastor	64.7	Buster	31.1	3d	Gurule	31.1	McInnis . . .	68.9
3d	Schneider . .	33.6	Stump	66.4	4th	Kelley	38.1	Schaffer . . .	56.1
4th	Milton	33.4	Shadegg . . .	66.6	5th	Robinson . . .	28.1	Hefley	71.9
5th	Nelson	26.0	Kolbe	68.7	6th	Fitz-Gerald . .	37.8	Schaefer . . .	62.2
6th	Owens	46.9	Hayworth . . .	47.2	CT	(X)	(X)	(X)	(X)
AR	(X)	(X)	(X)	(X)	1st	Kennelly . . .	73.8	Sleath	24.9
1st	Berry	52.8	Dupwe	44.3	2d	Gejdenson . . .	51.5	Monster . . .	45.0
2d	Snyder	52.3	Cummins	47.7	3d	DeLauro	71.2	Coppola . . .	28.2
3d	Henry	41.9	Hutchinson . .	55.7	4th	Finch	37.5	Shays	60.6
4th	Tolliver . . .	36.5	Dickey	63.5	5th	Maloney	52.1	Franks	45.9
CA	(X)	(X)	(X)	(X)	6th	Koskoff	48.8	Johnson . . .	49.8
1st	Alioto	44.1	Riggs	49.0	DE	Williams	27.5	Castle	69.5
2d	Braden	34.0	Herger	60.5	FL	(X)	(X)	(X)	(X)
3d	Fazio	53.6	LeFever	41.0				Scarbor- ough	72.6
4th	Hirning . . .	36.3	Doolittle . . .	60.2	1st	Beck	27.4	Sutton	40.5
5th	Matsui	70.5	Dinsmore . . .	26.1	2d	Boyd	59.5	(2)	(2)
6th	Woolsey . . .	62.0	Hughes	33.8	3d	Brown	61.2	(2)	(2)
7th	Miller	71.9	Reece	22.2	4th	(2)	(2)	Fowler	(NA)
8th	Pelosi	84.5	Raimondo . . .	12.2	5th	Thurman	61.7	Gentry	38.3
9th	Dellums . . .	77.2	Wright	18.2	6th	O'Brien	32.8	Stearns . . .	67.2
10th	Tauscher . . .	49.0	Baker	46.8	7th	Stuart	38.0	Mica	62.0
11th	Silva	36.3	Pombo	59.2	8th	Krulick	32.5	McCollum . .	67.5
12th	Lantos	71.8	Jenkins	23.5					
13th	Stark	65.4	Fay	30.2	9th	zano	31.3	Bilirakis . . .	68.7
14th	Eshoo	65.1	Brink	30.8	10th	Green	33.4	Young	66.6
15th	Lane	35.4	Campbell . . .	57.8	11th	Davis	58.0	Sharpe	42.0
16th	Lofgren . . .	66.1	Wojslaw	29.7	12th	Canady	38.4	Canady	61.6
17th	Farr	58.5	Brown	38.1	13th	Gordon	35.6	Miller	64.4
18th	Condit	65.6	Conrad	31.9	14th	Nolan	26.5	Goss	73.5
19th	Barile	27.9	Radanovich . .	67.0	15th	Byron	42.9	Weldon	51.4
20th	Dooley	55.2	Harvey	40.3	16th	Stuber	35.9	Foley	64.1
21st	Vollmer . . .	26.7	Thomas	65.7	17th	Steub	88.8	Roller	11.2
22d	Capps	49.3	Seastrand . . .	43.3				Ros- Lehtinen . . .	(NA)
23d	Unruhe	35.9	Gallegly	58.5	18th	(2)	(2)	Kennedy . . .	34.4
24th	Sherman . . .	50.4	Sybert	42.5	19th	Wexler	65.6	Jacobs	35.0
25th	Trautman . . .	33.4	McKeon	62.2	20th	Deutsch	65.0	Diaz-Balart . .	(NA)
26th	Berman	66.0	Glass	28.5	21st	(2)	(2)	Shaw	61.9
27th	Kahn	43.4	Rogan	49.9	22d	Cooper	38.1	Brown	26.5
28th	Levering . . .	37.2	Dreier	60.4	23d	Hastings	73.5		
29th	Waxman . . .	68.1	Stepanek . . .	24.1	GA	(X)	(X)	(X)	(X)
30th	Becerra . . .	72.7	Parker	18.2	1st	Kaszans	31.8	Kingston . . .	68.2
31st	Martinez . . .	67.7	Flores	27.7	2d	Bishop	53.8	Ealum	46.2
32d	Dixon	82.7	Ardito	12.1	3d	Chafin	38.9	Collins	61.1
	Roybal- Allard	82.4	Leonard	13.8	4th	McKinney . . .	57.8	Mitnick	42.2
34th	Torres	68.7	Nunez	26.3	5th	Lewis	(NA)	(2)	(2)
35th	Waters	85.8	Carlson	11.8	6th	Coles	42.2	Gingrich . . .	57.8
36th	Harmon . . .	52.8	Brooks	43.6	7th	Watts	42.2	Barr	57.8
	Millender- McDonald . . .	85.3	Voetee	14.7	8th	Wiggins	47.4	Chambliss . .	52.6
37th	Zbur	42.6	Horn	52.6	9th	Poston	34.6	Deal	65.4
38th	Davis	32.2	Royce	62.5	10th	Bell	48.2	Northwood . .	51.8
39th	Davis	32.2	Lewis	64.8	11th	Stephenson . .	35.7	Linder	64.3
40th	Conaway . . .	29.1	Kim	58.1	HI	(X)	(X)	(X)	(X)
41st	Waldron . . .	33.3	Wilde	49.4	1st	Aber- crombie	50.4	Swindle	46.5
42d	Brown	50.6	Calvert	54.2	2d	Mink	57.0	Pico	29.1
43d	Kimbrough . .	38.5	Bono	57.2	ID	(X)	(X)	(X)	(X)
44th	Rufus	39.1	Rohra- bacher	60.7	1st	Williams	47.5	Chenoweth . .	50.0
45th	Alexander . . .	33.4			2d	Seidi	29.5	Crapo	68.8

See footnotes at end of table.

No. 444. Vote Cast for United States Representatives, by Major Political Party—
Congressional Districts: 1996—Continued

[See headnote, p. 276]

STATE AND DISTRICT	DEMOCRATIC CANDIDATE		REPUBLICAN CANDIDATE		STATE AND DISTRICT	DEMOCRATIC CANDIDATE		REPUBLICAN CANDIDATE	
	Name	Percent of total	Name	Percent of total		Name	Percent of total	Name	Percent of total
IL	(X)	(X)	(X)	(X)	4th.	71.6	Raymond . . .	28.4	
1st.	Rush.	85.1	Naughton . . .	13.1	5th.	(X)	(X)	(X)	
2d.	Jackson.	94.0	(2)	(2)	6th.	48.3	Torkildsen . . .	48.1	
3d.	Lipinski	65.2	Nalepa	32.1	7th.	Markey	69.8	Long	30.2
4th.	Gutierrez	93.6	(2)	(2)	8th.	Kennedy	84.3	Hyde	15.7
5th.	Blagojevich	64.1	Flanagan.	35.9	9th.	Moakley	72.4	Gryska	27.6
6th.	de la Rosa	33.4	Hyde	64.3	10th.	Delahunt	54.5	Teague	41.8
7th.	Davis	82.3	Borow.	15.3	MI	(X)	(X)	(X)	
8th.	Hull.	36.1	Crane.	62.2	1st.	Stupak	70.6	Carr	27.4
9th.	Yates	63.3	Walsh.	36.7	2d.	Kruszynski	54.2	Hoekstra	65.5
10th.	Torf.	30.9	Porter	69.1	3d.	Flory	29.5	Ehlers.	68.6
11th.	Balanoff.	48.3	Weller.	51.7	4th.	Donaldson	32.7	Camp	65.5
12th.	Costello.	71.6	Hunter	26.6	5th.	Barcia	70.0	Sims.	28.2
13th.	Hynes	40.1	Fawell.	59.9	6th.	Annen	30.7	Upton	67.7
14th.	Mains	35.6	Hastert	64.4	7th.	Tunnickliff	44.5	Smith	53.4
15th.	Prussing	42.7	Ewing	57.3	8th.	Stabenow	54.2	Chrysler	43.7
16th.	Lee.	39.7	Manzullo	60.3	9th.	Kildee	59.1	Nowak	38.9
17th.	Evans	51.9	Baker	47.3	10th.	Bonior	54.5	Heintz.	43.4
18th.	Curran.	40.7	LaHood.	59.3	11th.	Frumin	35.8	Knollenberg	61.3
19th.	Poshard	66.7	Winters	31.8					
20th.	Hoffman	49.7	Shimkus	50.3	12th.	Levin	58.4	Pappa- george	39.4
IN	(X)	(X)	(X)	(X)	13th.	Rivers	56.3	Fitzsimmons	41.6
1st.	Visclosky	69.1	Petyo	29.3	14th.	Conyers.	84.0	Ashe	13.6
2d.	Carmichael.	39.7	McIntosh	58.1	15th.	Kilpatrick	87.9	Hume	9.8
3d.	Roemer	57.9	Zakas	40.9	16th.	Dingell.	62.1	DeSana	35.6
4th.	Houseman	38.2	Souder	59.4	MN	(X)	(X)	(X)	
5th.	Clark	32.6	Buyer	64.9	1st.	Rieder.	47.2	Gutknecht	52.8
	Dillard				2d.	Minge	55.0	Revier.	41.0
6th.	Trammell	23.1	Burton	74.9	3d.	Leino	29.8	Ramstad	70.2
7th.	Hellmann	34.6	Pease	62.0	4th.	Vento	57.0	Newinski	36.8
8th.	Weinzapfel	48.3	Hosettler	49.9	5th.	Sabo	64.5	Uldrich	28.4
9th.	Hamilton	56.3	Leisting	42.7	6th.	Luther	55.9	Jude	44.1
			Blanken- baker	45.1	7th.	Peterson	68.1	McKigney	31.9
10th.	Carson	52.6	(X)	(X)	8th.	Oberstar	68.5	Larson	24.0
IA	(X)	(X)	(X)	(X)	MS	(X)	(X)	(X)	
1st.	Rush.	45.7	Leach	52.9	1st.	Boyd.	30.5	Wicker	67.7
2d.	Smith	45.9	Nussle	53.5	2d.	Thompson	59.4	Covington	38.1
3d.	Boswell	49.2	Mahaffey	47.8	3d.	Eaves	36.5	Pickering.	61.4
4th.	McBurney	46.8	Ganske	52.1	4th.	Antoine	36.0	Parker	61.6
5th.	Smith	33.7	Latham	65.4	5th.	Taylor	58.3	Dollar	40.1
KS	(X)	(X)	(X)	(X)	MO	(X)	(X)	(X)	
1st.	Divine	24.5	Moran.	73.5	1st.	Clay	70.0	O'Sullivan	27.8
2d.	Frieden	45.5	Ryun	52.2	2d.	Horn	37.1	Talent	61.3
3d.	Hancock	45.4	Snowbarger	49.9	3d.	Gephardt	59.0	Wheelehan	38.8
4th.	Rathbun	46.6	Tiahrt	50.0	4th.	Skelton	63.8	Phelps	33.9
KY	(X)	(X)	(X)	(X)	5th.	McCarthy.	67.4	Bennett	28.9
1st.	Null.	46.4	Whitfield	53.6	6th.	Danner	68.6	Bailey	29.3
2d.	Wright	41.8	Lewis	58.2	7th.	Bamberger	31.6	Blunt	64.9
3d.	Ward.	49.7	Northrup	50.3	8th.	Firebaugh	37.3	Emerson	50.5
4th.	Bowman	31.7	Bunning	68.3	9th.	Volkmer	47.0	Hulshof	49.4
5th.	(2)	(2)	Rogers	(X)	MT	Yellowtail	43.2	Hill	52.4
6th.	Baesler	55.7	Fletcher	44.3	NE	(X)	(X)	(X)	
LA	(X)	(X)	(X)	(X)	1st.	Combs	29.9	Bereuter	70.1
1st.	(X)	(X)	Livingston	(X)	2d.	Davis	40.4	Christensen	56.8
2d.	Jefferson	(X)	(X)	(X)	3d.	Webster	22.6	Barrett	77.4
3d.	(X)	(X)	Tauzin	(X)	NV	(X)	(X)	(X)	
4th.	(X)	(X)	McCrey	(X)	1st.	Coffin	43.6	Ensign	50.1
5th.	Thompson	41.6	Cooksey	58.4	2d.	Wilson	35.2	Gibbons	58.6
6th.	(X)	(X)	Baker	(X)	NH	(X)	(X)	(X)	
7th.	Chris John	53.1	(2)	(2)	1st.	Keefe	46.6	Sununu	50.2
ME	(X)	(X)	(X)	(X)	2d.	Arnesen	43.5	Bass	50.6
1st.	Allen	55.4	Longley	44.6	NJ	(X)	(X)	(X)	
2d.	Baldacci	71.8	Young	24.9	1st.	Andrews	76.2	Suplee	21.0
MD	(X)	(X)	(X)	(X)	2d.	Katz	38.2	LoBiondo	60.4
1st.	Eastaugh	38.7	Gilchrist	61.3	3d.	Leonardi	33.3	Saxton	64.1
2d.	DeJulius	38.3	Ehrlich	61.7	4th.	Meara	33.7	Smith	63.7
3d.	Cardin	67.0	McDonough	33.0	5th.	Auer	24.6	Roukema	71.3
4th.	Wynn	85.4	Kimble	14.6	6th.	Pallone	61.6	Corodemus	35.8
5th.	Hoyer	57.0	Morgan	43.0	7th.	Lerner	42.1	Franks	55.1
6th.	Crawford	43.1	Barlett	56.9	8th.	Pascrell	51.0	Martini	48.1
7th.	Cummings	83.2	Kondner	16.8	9th.	Rothman	54.6	Donovan	43.4
8th.	Moors	38.7	Morella	61.3	10th.	Payne	83.8	Williams	14.9
MA	(X)	(X)	(X)	(X)					
1st.	Olver.	52.7	Swift.	47.3	11th.	Evangel.	31.1	Freling- huysen	66.0
2d.	Neal	71.7	Steele.	22.0	12th.	Del Vecchio	46.5	Pappas	49.9
3d.	McGovern	53.1	Blute	45.5	13th.	Menendez	78.9	Munoz	17.7

See footnotes at end of table.

**No. 444. Vote Cast for United States Representatives, by Major Political Party—
Congressional Districts: 1996—Continued**

[See headnote, p. 276]

STATE AND DISTRICT	DEMOCRATIC CANDIDATE		REPUBLICAN CANDIDATE		STATE AND DISTRICT	DEMOCRATIC CANDIDATE		REPUBLICAN CANDIDATE	
	Name	Percent of total	Name	Percent of total		Name	Percent of total	Name	Percent of total
NM . . .	(X)	(X)	(X)	(X)	13th	Brown . . .	60.5	Blair . . .	36.0
1st	Wertheim	38.4	Schiff	54.9	14th	Sawyer . . .	54.3	George . . .	41.8
2d	Baca	44.0	Skeen	56.0	15th	Arnebeck . . .	28.9	Pryce . . .	71.1
3d	Richardson	67.4	Redmond . . .	30.4	16th	Burkhardt . . .	28.0	Regula . . .	68.7
NY . . .	(X)	(X)	(X)	(X)	17th	Trafficant . . .	91.0	(2)	(2)
1st	Bredes	45.0	Forbes	55.0	18th	Burch	46.4	Ney	50.1
2d	Herman	33.4	Lazio	63.9	19th	Coyne	40.8	LaTourette . . .	54.8
3d	LaMagna	41.9	King	55.6	OK . . .	(X)	(X)	(X)	(X)
4th	McCarthy	57.2	Frisa	40.7	1st	Amen	27.6	Largent . . .	68.2
5th	Ackerman	63.4	Lally	35.2	2d	Johnson	44.5	Coburn	55.5
6th	Flake	85.0	Misra	15.0	3d	Roberts	45.2	Watkins	51.4
7th	Manton	70.6	Birtley	29.4	4th	Crocker . . .	39.9	Watts	57.7
8th	Nadler	81.8	Benjamin . . .	16.5	5th	Forsythe . . .	27.1	Istook	69.7
9th	Schumer	74.0	Verga	21.9	6th	Barby	36.1	Lucas	63.9
10th	Towns	90.7	Parker	8.0	OR . . .	(X)	(X)	(X)	(X)
11th	Owens	91.5	Hayle	8.5	1st	Furse	54.6	Witt	42.2
12th	Velazquez	84.0	Prado	14.1	2d	Dugan	39.0	Smith	59.1
13th	Butler	34.6	Molinari . . .	61.6	3d	Blumenauer . . .	68.2	Bruun	24.9
14th	Maloney	72.4	Livingston . . .	23.6	4th	DeFazio	68.6	Newkirk . . .	26.6
15th	Rangel	90.9	Adams	4.9	5th	Hooley	51.6	Bunn . . .	45.0
16th	Serrano	96.4	Torres	2.9	PA . . .	(X)	(X)	(X)	(X)
17th	Engel	84.7	McCarthy . . .	13.6	1st	Foglietta . . .	87.4	Cella	12.6
18th	Lowe	63.3	Katsorhis	32.3	2d	Fattah	88.1	Murphy . . .	11.9
19th	Klein	39.5	Kelly	46.2	3d	Borski	68.9	McColgan . . .	31.1
20th	Aggarwal . . .	37.7	Gilman	56.9	4th	Klink	64.2	Adamez	35.8
21st	McNulty	66.3	Norman	26.8	5th	Rudy	39.8	Peterson	60.2
22d	James	38.8	Solomon	61.2	6th	Holden	58.6	Leinbach . . .	40.6
23d	Hapanowicz . . .	26.1	Boehlert	64.2	7th	Innelli	32.3	Weldon	67.0
24th	Ravenscroft . . .	24.8	McHugh	71.2	8th	Murray	35.3	Greenwood	64.7
25th	Mack	44.7	Walsh	55.3	9th	Kemmler . . .	26.3	Shuster . . .	73.7
26th	Hinche	54.9	Wittig	42.4	10th	Cullen	36.6	McDade . . .	59.4
27th	Fricano	40.0	Paxon	60.0	11th	Kanjorski . . .	68.5	Urban	31.5
			Rosen	73.9	12th	Murtha	69.9	Choby	30.1
			Berger	43.0	13th	Hoefel	48.9	Fox	48.9
28th	Slaughter	57.0	Callard	38.1	14th	Coyne	60.6	Ravotti . . .	39.0
29th	LaFalce	61.9	Quinn	54.9	15th	McHale	55.3	Kilbanks . . .	40.8
30th	Pordum	45.1	Houghton . . .	71.5	16th	Blaine	37.5	Pitts	59.4
31st	MacBain	25.5	(X)	(X)	17th	Kettl	27.8	Gekas	72.2
NC . . .	(X)	(X)	(X)	(X)	18th	Doyle	56.0	Fawcett	40.5
1st	Clayton	65.7	Tyler	33.3	19th	Chronister . . .	35.9	Goodling	62.6
2d	Etheridge	52.6	Funderburk . . .	45.6	20th	Mascara	53.9	McCormick . . .	46.1
3d	Parrott	36.2	Jones	63.0	21st	DiNicola	49.3	English	50.7
4th	Price	54.4	Heineman	43.8	RI . . .	(X)	(X)	(X)	(X)
5th	Cashion	35.4	Burr	62.1	1st	Kennedy	69.1	Ciccone	28.3
6th	Costley	25.4	Coble	73.4	2d	Weygand . . .	64.5	Wild	31.6
7th	McIntyre	52.9	Caster	45.8	SC . . .	(X)	(X)	(X)	(X)
8th	Hefner	54.9	Blackwood . . .	44.0	1st	(2)	(2)	Sanford	96.5
9th	Daisley	35.7	Myrick	62.7	2d	(2)	(2)	Spence	89.9
10th	Neill	28.8	Ballenger . . .	69.9	3d	Dorn	38.4	Graham	60.6
11th	Ferguson	40.0	Taylor	58.3	4th	Curry	27.8	Inglis . . .	70.9
12th	Watt	71.5	Martino	26.8	5th	Spratt	54.0	Bigham	45.4
ND . . .	Pomeroy	55.1	Cramer	43.2	6th	Clyburn	68.4	McLeod . . .	29.7
OH . . .	(X)	(X)	(X)	(X)	SD . . .	Weiland	37.0	Thune	57.7
1st	Longabaugh . . .	43.2	Chabot	54.3	TN . . .	(X)	(X)	(X)	(X)
2d	Chandler	22.6	Portman	72.1	1st	Smith	33.2	Jenkins	63.9
3d	Hall	59.1	Westbrock . . .	31.0	2d	Smith	28.6	Duncan	70.7
4th	McClain	30.5	Oxley	64.6	3d	Jolly	42.6	Wamp	56.4
5th	Saunders	34.0	Gillmor	61.1	4th	Stewart . . .	41.1	Hilleary . . .	58.0
6th	Strickland . . .	51.2	Creameans . . .	48.8				Edmondson . . .	23.8
7th	Blain	26.4	Hobson	67.9				Gill . . .	41.6
8th	Kitchen	26.1	Boehner	70.3				Bryant . . .	64.1
9th	Kaptur	77.1	Whitman	20.7				Watson . . .	30.1
10th	Kucinich	49.0	Hoke	46.4				DeBerry . . .	37.3
11th	Stokes	81.1	Sykora	15.4					
12th	Ruccia	30.5	Kasich	66.5					

See footnotes at end of table.

No. 444. Vote Cast for United States Representatives, by Major Political Party—
Congressional Districts: 1996—Continued

[See headnote, p. 276]

STATE AND DISTRICT	DEMOCRATIC CANDIDATE		REPUBLICAN CANDIDATE		STATE AND DISTRICT	DEMOCRATIC CANDIDATE		REPUBLICAN CANDIDATE	
	Name	Percent of total	Name	Percent of total		Name	Percent of total	Name	Percent of total
TX	(X)	(X)	(X)	(X)	1st.	(2)	(2)	Bateman	(X)
1st.	Sandlin	51.6	Merritt	46.7	2d	Pickett	65.2	Tate	34.8
2d	Turner	52.2	Babin	45.6	3d	Scott	82.2	Holland	17.8
3d	Cole	24.4	Johnson	73.0	4th.	Sisisky	78.5	Zevgolis	21.5
4th.	Hall	63.8	Hall	34.3	5th.	Goode	60.1	Landrith	36.4
5th.	Pouland	46.9	Sessions	53.1	6th.	(2)	(2)	Goodlatte	66.9
6th.	(2)	(2)	Barton	77.1	7th.	Slayton	20.3	Bliley	75.2
7th.	Siegmund	15.1	Archer	81.4	8th.	Moran	66.5	Otey	28.4
8th.	Newman ⁶	13.6	Brady ⁷	41.5	9th.	Boucher	65.1	Muldoon	30.7
9th.	Lampson ⁸	44.1	Stockman	46.4	10th.	Weinberg	25.4	Wolf	71.8
10th.	Doggett	56.2	Doggett	41.4	11th.	Horton	34.6	Davis	64.2
11th.	Edwards	56.8	Mathis	42.4	WA	(X)	(X)	(X)	(X)
12th.	Parmer	41.0	Granger	57.8	1st.	Coopersmith	47.9	White	52.1
13th.	Silverman	32.2	Thornberry	67.0	2d	Quigley	48.7	Metcalf	47.5
14th.	Morris	47.7	Paul	51.0	3d	Baird	50.7	Smith	49.3
15th.	Hinojosa	62.2	Haughey	36.8	4th.	Locke	48.0	Hastings	52.0
16th.	Reyes	70.6	Ledesma	27.6	5th.	Olson	45.1	Nethercutt	54.9
17th.	Stenholm	57.7	Izzard	47.4	6th.	Dicks	68.3	Tinsley	28.2
18th.	Jackson-Lee	51.1	White	10.1	7th.	McDermott	82.3	Kleschen	17.7
19th.	Sawyer	19.6	Combest	80.4	8th.	Little	36.5	Dunn	63.5
20th.	Gonzalez	63.7	Walker	34.4	9th.	Smith	51.4	Tate	45.9
21st.	Wharton	22.4	Smith	76.4	WV	(X)	(X)	(X)	(X)
22d	Cunningham	31.9	DeLay	68.1	1st.	Mollohan	(X)	(2)	(2)
23d	Jones	36.4	Bonilla	61.9	2d	Wise	68.9	Morris	31.1
24th.	Frost	55.8	Harrison	39.1	3d	Rahall	(X)	(2)	(2)
25th.	Bentsen ⁹	34.0	McKenna ¹⁰	17.1	Wl	(X)	(X)	(X)	(X)
26th.	Frankel	26.4	Armey	73.6	1st.	Spottswood	49.0	Neumann	51.0
27th.	Ortiz	64.7	Gardner	33.9	2d	Soglin	41.0	Klug	57.4
28th.	Tejeda	75.4	Cude	23.4	3d	Kind	52.1	Harsdorf	47.9
29th.	Green	67.4	Rodriguez ¹²	31.1	4th.	Klecзка	57.7	Reynolds	42.3
30th.	Johnson ¹¹	54.6	Hendry ¹²	18.3	5th.	Barrett	73.3	Melotik	24.6
UT	(X)	(X)	(X)	(X)	6th.	Lindskoog	23.8	Petri	73.1
1st.	Sanders	30.0	Hansen	68.3	7th.	Obey	57.0	West	43.0
2d	Anderson	42.4	Cook	55.0	8th.	Johnson	52.0	Prosser	48.0
3d	Orton	47.3	(2)	(2)	9th.	Brenhold	25.5	Sensenbrenner	74.5
VT ¹³	(X)	(X)	Sweetser	32.5	WY	Maxfield	40.9	Cubin	55.2
VA	(2)	(2)	(X)	(X)					

NA Not available. X Not applicable. ¹ There were 2 Democratic candidates; Preston Fields received 38.8 percent of Democratic votes. ² No candidate. ³ Louisiana holds an open-primary election with candidates from all parties running on the same ballot. Any candidate who receives a majority is elected; if no candidate receives 50 percent, there is a run-off election in November between the top two finishers. ⁴ Candidate listed won seat in open-primary. ⁵ There were 2 Democratic candidates; Hunter Lundy received 46.9 percent of Democratic votes. ⁶ There were 2 Democratic candidates; Robert Mussemeh received 6.0 percent of Democratic votes. ⁷ There were 2 Republican candidates; Gene Fontenot received 38.9 percent of Republican votes. ⁸ There were 2 Democratic candidates; Geraldine Sam received 9.4 percent of Democratic votes. ⁹ There were 2 Democratic candidates; Beverly Clark received 16.9 percent of Democratic votes. ¹⁰ There were 7 additional Republican candidates who received a total of 31.7 percent of Republican votes. ¹¹ There were 2 additional Democratic candidates who received a total of 15.7 percent of Democratic candidates. ¹² There were 2 Republican candidates; Lisa Kitterman received 6.9 percent of Republican votes. ¹³ The winning candidate was Sanders, an Independent, who received 49.9 percent of the vote.

Source: Congressional Quarterly Inc., *Congressional Quarterly Weekly Report*, (copyright).

No. 445. Composition of Congress, by Political Party: 1971 to 1996

[D=Democratic, R=Republican. Data for beginning of first session of each Congress (as of January 3), except as noted. Excludes vacancies at beginning of session]

YEAR	Party and President	Congress	HOUSE			SENATE		
			Majority party	Minority party	Other	Majority party	Minority party	Other
1971 ¹	R (Nixon)	92d	D-254	R-180	-	D-54	R-44	2
1973 ^{1 2}	R (Nixon)	93d	D-239	R-192	1	D-56	R-42	2
1975 ³	(Ford)	94th	D-291	R-144	-	D-60	R-37	2
1977 ⁴	D (Carter)	95th	D-292	R-143	-	D-61	R-38	1
1979 ⁴	D (Carter)	96th	D-276	R-157	-	D-58	R-41	1
1981 ⁴	D (Reagan)	97th	D-243	R-192	-	R-53	D-46	1
1983	R (Reagan)	98th	D-269	R-165	-	R-54	D-46	-
1985	R (Reagan)	99th	D-252	R-182	-	R-53	D-47	-
1987	R (Reagan)	100th	D-258	R-177	-	D-55	R-45	-
1989	R (Bush)	101st	D-259	R-174	-	D-55	R-45	-
1991 ⁵	D (Bush)	102d	D-267	R-167	1	D-56	R-44	-
1993 ⁵	D (Clinton)	103d	D-258	R-176	1	D-57	R-43	-
1995 ⁵	D (Clinton)	104th	R-230	D-204	1	R-52	D-48	-
1996 ^{5 6}	D (Clinton)	104th	R-236	D-197	1	R-53	D-46	-

- Represents zero. ¹ Senate had one Independent and one Conservative-Republican. ² House had one Independent-Democrat. ³ Senate had one Independent, one Conservative-Republican, and one undecided (New Hampshire). ⁴ Senate had one Independent. ⁵ House had one Independent-Socialist. ⁶ As of beginning of second session.

Source: U.S. Congress, Joint Committee on Printing, *Congressional Directory*, annual; beginning 1977, biennial.

No. 446. Composition of Congress, by Political Party Affiliation—States: 1989 to 1996

[Figures are for the beginning of the first session (as of January 3), except as noted. Dem.=Democratic; Rep.=Republican]

REGION, DIVISION, AND STATE	REPRESENTATIVES								SENATORS							
	101st Cong., ¹ 1989		102d Cong., ² 1991		103rd Cong., ² 1993		104th Cong., ^{2 3 4} 1996		101st Cong., 1989		102d Cong., 1991		103rd Cong., 1993		104th Cong., ^{3 5} 1996	
	Dem.	Rep.	Dem.	Rep.	Dem.	Rep.	Dem.	Rep.	Dem.	Rep.	Dem.	Rep.	Dem.	Rep.	Dem.	Rep.
U.S.	267	167	258	176	204	230	197	236	56	44	57	43	48	52	46	53
Northeast.	56	38	50	37	47	40	47	40	10	8	11	7	9	9	9	9
N.E.	16	7	14	8	14	8	14	8	7	5	7	5	6	6	6	6
ME	1	1	1	1	1	1	1	1	1	1	1	1	-	2	-	2
NH	1	1	1	1	1	2	-	2	-	2	-	2	-	2	-	2
VT	-	-	-	-	-	-	-	-	1	1	1	1	1	1	1	1
MA	10	1	8	2	8	2	8	2	2	-	2	-	2	-	2	-
RI	1	1	1	1	2	-	2	-	1	1	1	1	1	1	1	1
CT	3	3	3	3	3	3	3	3	2	-	2	-	2	-	2	-
M.A.	40	31	36	29	33	32	33	32	3	3	4	2	3	3	3	3
NY	21	13	18	13	17	14	17	14	1	1	1	1	1	1	1	1
NJ	8	6	7	6	5	8	5	8	2	-	2	-	2	-	2	-
PA	11	12	11	10	11	10	11	10	-	2	1	1	-	2	-	2
Midwest.	68	45	61	44	46	59	46	59	14	10	15	9	13	11	13	11
E.N.C.	49	31	43	31	32	42	32	42	7	3	8	2	6	4	6	4
OH	11	10	10	9	6	13	6	13	2	-	2	-	1	1	1	1
IN	8	2	7	3	4	6	4	6	-	2	-	2	-	2	-	2
IL	15	7	12	8	10	10	10	10	2	-	2	-	2	-	2	-
MI	11	7	10	6	9	7	9	7	2	-	2	-	1	1	1	1
WI	4	5	4	5	3	6	3	6	1	1	2	-	2	-	2	-
W.N.C.	19	14	18	13	14	17	14	17	7	7	7	7	7	7	7	7
MN	6	2	6	2	6	2	6	2	1	1	1	1	1	1	1	1
IA	2	4	1	4	-	5	-	5	1	1	1	1	1	1	1	1
MO	6	3	6	3	6	3	6	3	-	2	-	2	-	2	-	2
ND	1	-	1	-	1	-	1	-	2	-	2	-	2	-	2	-
SD	1	-	1	-	1	-	1	-	1	1	1	1	1	1	1	1
NE	1	2	1	2	-	3	-	3	2	-	2	-	2	-	2	-
KS	2	3	2	2	-	4	-	4	-	2	-	2	-	2	-	2
South	95	47	92	57	71	78	66	83	22	10	20	12	16	16	15	17
S.A.	45	24	42	33	31	44	30	45	11	5	9	7	9	7	9	7
DE	1	-	-	1	-	1	-	1	1	1	1	1	1	1	1	1
MD	5	3	4	4	4	4	4	4	2	-	2	-	2	-	2	-
VA	6	4	7	4	6	5	6	5	1	1	1	1	1	1	1	1
WV	4	-	3	-	3	-	3	-	2	-	2	-	2	-	2	-
NC	7	4	8	4	4	8	4	8	1	1	-	2	-	2	-	2
SC	4	2	3	3	2	4	2	4	1	1	1	1	1	1	1	1
GA	9	1	7	4	4	7	3	8	2	-	1	1	1	1	1	1
FL	9	10	10	13	8	15	8	15	1	1	1	1	1	1	1	1
E.S.C.	20	8	19	8	14	13	13	14	5	3	5	3	3	5	2	6
KY	4	3	4	2	2	4	2	4	1	1	1	1	1	1	1	1
TN	6	3	6	3	4	5	4	5	2	-	2	-	2	-	2	-
AL	5	2	4	3	4	3	4	3	2	-	2	-	2	-	1	1
MS	5	-	5	-	4	1	3	2	-	2	-	2	-	2	-	2
W.S.C.	30	15	31	16	26	21	23	24	6	2	6	2	4	4	4	4
AR	3	1	2	2	2	2	2	2	2	-	2	-	2	-	2	-
LA	4	4	4	3	4	3	2	5	2	-	2	-	2	-	2	-
OK	4	2	4	2	1	5	1	5	1	1	1	1	-	2	-	2
TX	19	8	21	9	19	11	18	12	1	1	1	1	-	2	-	2
West	48	37	55	38	40	53	38	54	10	16	11	15	10	16	9	16
Mountain	11	13	11	13	6	18	6	18	6	10	6	10	5	11	4	12
MT	1	1	1	-	1	-	1	-	1	1	1	1	1	1	1	1
ID	2	-	1	1	-	2	-	2	-	2	-	2	-	2	-	2
WY	-	1	-	1	-	1	-	1	-	2	-	2	-	2	-	2
CO	3	3	2	4	2	4	2	4	1	1	1	1	1	1	1	1
NM	1	2	1	2	1	2	1	2	1	1	1	1	1	1	1	1
AZ	1	4	3	3	1	5	1	5	1	1	1	1	-	2	-	2
UT	2	1	2	1	1	2	1	2	-	2	-	2	-	2	-	2
NV	1	1	1	1	-	2	-	2	-	-	2	-	2	-	2	-
Pacific	37	24	44	25	34	35	32	36	4	6	5	5	5	5	5	4
WA	5	3	8	1	2	7	2	7	1	1	1	1	1	1	1	1
OR	4	1	4	1	3	2	3	2	-	2	-	2	-	2	-	2
CA	26	19	30	22	27	25	25	26	1	1	2	-	2	-	2	-
AK	-	1	-	1	-	1	-	1	-	2	-	2	-	2	-	2
HI	2	-	2	-	2	-	2	-	2	-	2	-	2	-	2	-

- Represents zero. ¹ Alabama and Indiana had one vacancy each. ² Vermont had one Independent-Socialist Representative. ³ As of beginning of second session. ⁴ California had one vacancy. ⁵ Oregon had one vacancy.

Source: U.S. Congress, Joint Committee on Printing, *Congressional Directory*, biennial; and unpublished data.

No. 447. Members of Congress—Incumbents Re-elected: 1964 to 1996

YEAR	REPRESENTATIVES						SENATORS					
	Retire- ments ¹	Incumbent candidates					Retire- ments ¹	Incumbent candidates				
		Total	Re-elected		Defeated in—			Total	Re-elected		Defeated in—	
			Number	Per- cent of candi- dates	Pri- mary	General election			Number	Per- cent of candi- dates	Pri- mary	General election
PRESIDENTIAL-YEAR ELECTIONS												
1964	33	397	344	86.6	8	45	2	33	28	84.8	4	4
1968	23	409	396	96.8	4	9	6	28	20	71.4	4	4
1972	40	390	365	93.6	12	13	6	27	20	74.1	2	5
1976	47	384	368	95.8	3	13	8	25	16	64.0	-	9
1980	34	398	361	90.7	6	31	5	29	16	55.2	4	9
1984	22	411	392	95.4	3	16	4	29	26	89.7	-	3
1988	23	409	402	98.3	1	6	6	27	23	85.2	-	4
1992	65	368	325	88.3	² 19	³ 24	7	28	23	82.1	1	4
1996	50	384	361	94.0	2	21	13	21	19	90.5	1	1
MIDTERM ELECTIONS												
1966	22	411	362	88.1	8	41	3	32	28	87.5	3	1
1970	29	401	379	94.5	10	12	4	31	24	77.4	1	6
1974	43	391	343	87.7	8	40	7	27	23	85.2	2	2
1978	49	382	358	93.7	5	19	10	25	15	60.0	3	7
1982	40	393	354	90.1	² 10	29	3	30	28	93.3	-	2
1986	40	394	385	97.7	3	6	6	28	21	75.0	-	7
1990	27	406	390	96.1	1	15	3	32	31	96.9	-	1
1994	48	387	349	90.2	4	34	9	26	24	92.3	-	2

- Represents zero. ¹ Does not include persons who died or resigned before the election. ² Number of incumbents defeated in primaries by other incumbents due to redistricting: six in 1982 and four in 1992. ³ Five incumbents defeated in general election by other incumbents due to redistricting.

Source: Ornstein, Norman J., Thomas E. Mann, and Michael J. Malbin, *Vital Statistics on Congress, 1993-1994*, Congressional Quarterly, Inc., Washington, DC, 1995; Congressional Quarterly, Inc., Washington, DC, *America Votes, biennial (copyright)*.

No. 448. Members of Congress—Selected Characteristics: 1981 to 1995

[As of beginning of first session of each Congress, (January 3). Figures for Representatives exclude vacancies]

MEMBERS OF CONGRESS AND YEAR	Male	Fe- male	Black ¹	Asian, Pacific Island- er ²	His- panic ³	AGE ⁴ (in years)					SENIORITY ⁵				
						Under 40	40 to 49	50 to 59	60 to 69	70 and over	Less than 2 yrs.	2 to 9 yrs.	10 to 19 yrs.	20 to 29 yrs.	30 yrs. or more
97th Cong., 1981 . . .	416	19	17	3	6	94	142	132	54	13	77	231	96	23	8
98th Cong., 1983 . . .	413	21	21	3	8	86	145	132	57	14	83	224	88	28	11
99th Cong., 1985 . . .	412	22	20	3	10	71	154	131	59	19	49	237	104	34	10
100th Cong., 1987 . . .	412	23	23	4	11	63	153	137	56	26	51	221	114	37	12
101st Cong., 1989 . . .	408	25	24	5	10	41	163	133	74	22	39	207	139	35	13
102d Cong., 1991 . . .	407	28	25	3	11	39	152	134	86	24	55	178	147	44	11
103d Cong., 1993 ⁶ . . .	388	47	38	4	17	47	151	128	89	15	118	141	132	32	12
104th Cong., 1995 . . .	388	47	40	4	17	53	155	135	79	13	92	188	110	36	9
SENATORS															
97th Cong., 1981 . . .	98	2	-	3	-	9	35	36	14	6	19	51	17	11	2
98th Cong., 1983 . . .	98	2	-	2	-	7	28	39	20	6	5	61	21	10	3
99th Cong., 1985 . . .	98	2	-	2	-	4	27	38	25	6	8	56	27	7	2
100th Cong., 1987 . . .	98	2	-	2	-	5	30	36	22	7	14	41	36	7	2
101st Cong., 1989 . . .	98	2	-	2	-	-	30	40	22	8	23	22	43	10	2
102d Cong., 1991 . . .	98	2	-	2	-	-	23	46	24	7	5	34	47	10	4
103d Cong., 1993 ⁶ . . .	93	7	1	2	-	1	16	48	22	12	15	30	39	11	5
104th Cong., 1995 . . .	92	8	1	2	-	1	14	41	27	17	12	38	30	15	5

- Represents zero. ¹ Source: Joint Center for Political and Economic Studies, Washington, DC, *Black Elected Officials: A National Roster, annual, (copyright)*. ² Source: Library of Congress, Congressional Research Service, "Asian Pacific Americans in the United States Congress", Report 94-767 GOV. ³ Source: National Association of Latino Elected and Appointed Officials, Washington, DC, *National Roster of Hispanic Elected Officials, annual*. ⁴ Some members do not provide date of birth. ⁵ Represents consecutive years of service. ⁶ Includes members elected to fill vacant seats through June 14, 1993.

Source: Except as noted, compiled by U.S. Bureau of the Census from data published in *Congressional Directory*, biennial.

No. 449. U.S. Congress—Measures Introduced and Enacted and Time in Session: 1979 to 1996

[Excludes simple and concurrent resolutions]

ITEM	96th	97th	98th	99th	100th	101st	102d	103d	104th
	Cong., 1979-80	Cong., 1981-82	Cong., 1983-84	Cong., 1985-86	Cong., 1987-88	Cong., 1989-90	Cong., 1991-92	Cong., 1993-94	Cong., 1995-96
Measures introduced	12,583	11,490	11,156	9,885	9,588	6,664	6,775	8,544	6,808
Bills	11,722	10,582	10,134	8,697	8,515	5,977	6,212	7,883	6,545
Joint resolutions	861	908	1,022	1,188	1,073	687	563	661	263
Measures enacted	736	529	677	483	761	666	609	473	337
Public	613	473	623	466	713	650	589	465	333
Private	123	56	54	17	48	16	20	8	4
HOUSE OF REPRESENTATIVES									
Number of days	326	303	266	281	298	281	280	265	290
Number of hours	1,876	1,420	1,705	1,794	1,659	1,688	1,796	1,887	2,445
Number of hours per day	5.8	4.7	6.4	6.4	5.6	6.0	6.4	7.1	8.4
SENATE									
Number of days	333	312	281	313	307	274	287	291	343
Number of hours	2,324	2,158	1,951	2,531	2,341	2,254	2,292	2,514	2,876
Number of hours per day	7.0	6.9	6.9	8.1	7.6	8.2	8.0	8.6	8.4

Source: U.S. Congress, *Congressional Record and Daily Calendar*, selected issues.

No. 450. Congressional Bills Vetoed: 1961 to 1996

PERIOD	President	Total vetoes	Regular vetoes	Pocket vetoes	Vetoes sustained	Bills passed over veto
1961-63	Kennedy	21	12	9	21	-
1963-69	Johnson	30	16	14	30	-
1969-74	Nixon	43	26	17	36	7
1974-77	Ford	66	48	18	54	12
1977-81	Carter	31	13	18	29	2
1981-89	Reagan	78	39	39	69	9
1989-93	Bush	44	29	15	43	1
1993-96	Clinton	17	17	-	16	1

- Represents zero.

Source: U.S. Congress, Senate Library, *Presidential Vetoes ... 1789-1968*; U.S. Congress, *Calendars of the U.S. House of Representatives and History of Legislation*, annual.

No. 451. Congressional Staff, by Location of Employment: 1972 to 1995

[Excludes those persons employed in Congressional support agencies such as the U.S. General Accounting Office, the Library of Congress, and the Congressional Budget Office]

YEAR	PERSONAL STAFF		YEAR	STANDING COMMITTEE STAFF		LOCATION OF EMPLOYMENT	1985	1990	1991	1993	1995
	House	Senate		House	Senate						
1972 . .	5,280	2,426	1970 . .	702	635	Total	18,136	17,625	17,851	(NA)	16,184
1980 . .	7,371	3,746	1980 . .	1,917	1,191	House of Representatives . . .	11,636	11,064	11,041	10,791	9,913
1981 . .	7,487	3,945	1981 . .	1,843	1,022	Committee staff ²	2,146	2,173	2,321	2,070	1,266
1982 . .	7,511	4,041	1982 . .	1,839	1,047	Personal staff	7,528	7,496	7,278	7,390	7,186
1983 . .	7,606	4,059	1983 . .	1,970	1,075	Leadership staff	144	156	149	137	134
1984 . .	7,385	3,949	1984 . .	1,944	1,095	Officers of House, staff . . .	1,818	1,239	1,293	1,194	1,327
1985 . .	7,528	4,097	1985 . .	2,009	1,080	Senate	6,369	6,425	6,665	6,529	6,163
1986 . .	7,920	3,774	1986 . .	1,954	1,075	Committee staff ²	1,178	1,207	1,154	1,032	796
1987 . .	7,584	4,075	1987 . .	2,024	1,074	Personal staff	4,097	4,162	4,294	4,200	4,247
1989 . .	7,569	3,837	1988 . .	1,976	970	Leadership staff	118	94	125	132	126
1990 . .	7,496	4,162	1989 . .	1,986	1,013	Officers of Senate, staff . . .	976	962	1,092	1,165	994
1991 . .	7,278	4,294	1990 . .	1,993	1,090	Joint committee staff	131	136	145	(NA)	108
1992 . .	7,597	4,249	1991 . .	2,201	1,030						
1993 . .	7,400	4,138	1992 . .	2,178	1,008						
1994 . .	7,390	4,200	1993 . .	2,118	897						
1995 . .	7,186	4,247	1994 . .	2,046	958						
			1995 . .	1,246	732						

NA Not available. ¹ House figure is average for year, and Senate figure only covers period following implementation of Gramm-Rudman budget reductions. ² Covers standing, select, and special committees.

Source: Ornstein, Norman J., Thomas E. Mann, and Michael J. Malbin, *Vital Statistics on Congress, 1993-1994*, Congressional Quarterly, Inc., Washington, DC, 1994, and unpublished data (copyright).

No. 452. Number of Governors, by Political Party Affiliation: 1970 to 1997

[Reflects figures after inaugurations for each year]

YEAR	Democrat	Republican	Independent	YEAR	Democrat	Republican	Independent	YEAR	Democrat	Republican	Independent
1970	18	32	-	1988	27	23	-	1993	30	18	2
1975	36	13	1	1989	28	22	-	1994	29	19	2
1980	31	19	-	1990	29	21	-	1995	19	30	1
1985	34	16	-	1991	29	19	2	1996	18	31	1
1987	26	24	-	1992	28	20	2	1997	17	32	1

- Represents zero. ¹ Reflects result of runoff election in Arizona in February 1991.
 Source: National Governors' Association, Washington, DC, 1970-87 and 1991-97, *Directory of Governors of the American States, Commonwealths & Territories, annual*; and 1988-90, *Directory of Governors, annual*. (Copyright.)

No. 453. Vote Cast for and Governor Elected, by State: 1990 to 1996

[In thousands, except percent. D=Democratic, R=Republican, I=Independent]

DIVISION AND STATE	1990		1992		1994		1996		Candidate elected at most recent election
	Total vote ¹	Percent leading party	Total vote ¹	Percent leading party	Total vote ¹	Percent leading party	Total vote ¹	Percent leading party	
N.E.:									
ME	522	R-46.7	(X)	(X)	511	I-35.4	(X)	(X)	Angus King
NH	295	R-60.3	516	R-69.9	312	R-69.9	497	D-57.2	Jeanne Shaheen
VT	211	R-51.8	286	D-74.7	212	D-68.7	255	D-70.6	Howard Dean
MA	2,343	R-50.2	(X)	(X)	2,164	R-70.9	(X)	(X)	William Weld
RI	357	D-74.1	425	D-61.5	361	R-47.4	(X)	(X)	Lincoln Almond
CT	1,141	I-40.4	(X)	(X)	1,147	R-36.2	(X)	(X)	John Rowland
M.A.:									
NY	4,057	D-53.2	(X)	(X)	5,204	R-48.8	(X)	(X)	George Pataki
NJ	2,254	D-61.2	2,506	R-49.3	(X)	(X)	(X)	(X)	Christine T. Whitman
PA	3,053	D-67.7	(X)	(X)	3,585	R-45.4	(X)	(X)	Thomas Ridge
E.N.C.:									
OH	3,478	R-55.7	(X)	(X)	3,346	R-71.8	(X)	(X)	George Voinovich
IN	(X)	(X)	2,229	D-62.0	(X)	(X)	2,110	D-51.5	Frank L. O'Brien
IL	3,257	R-50.7	(X)	(X)	3,107	R-63.9	(X)	(X)	Jim Edgar
MI	2,565	R-49.8	(X)	(X)	3,088	R-61.5	(X)	(X)	John Engler
WI	1,380	R-58.2	(X)	(X)	1,563	R-67.3	(X)	(X)	Tommy Thompson
W.N.C.:									
MN	1,807	R-49.6	(X)	(X)	1,766	R-62.0	(X)	(X)	Arne Carlson
IA	976	R-60.6	(X)	(X)	997	R-56.8	(X)	(X)	Terry Branstad
MO	(X)	(X)	2,344	D-58.7	(X)	(X)	2,143	D-57.2	Mel Carnahan
ND	(X)	(X)	305	R-57.9	(X)	(X)	264	R-66.2	Edward T. Schafer
SD	257	R-58.9	(X)	(X)	312	R-55.4	(X)	(X)	William Janklow
NE	587	D-49.9	(X)	(X)	580	D-73.0	(X)	(X)	Ben Nelson
KS	783	D-48.6	(X)	(X)	821	R-64.1	(X)	(X)	Bill Graves
S.A.:									
DE	(X)	(X)	277	D-64.7	(X)	(X)	271	D-69.5	Thomas R. Carper
MD	1,111	D-59.8	(X)	(X)	1,410	D-50.2	(X)	(X)	Parris Glendening
VA	1,789	D-50.1	1,794	R-58.3	(X)	(X)	(X)	(X)	George F. Allen
WV	(X)	(X)	657	D-56.0	(X)	(X)	629	R-51.6	Cecil H. Underwood
NC	(X)	(X)	2,595	D-52.7	(X)	(X)	2,566	D-56.0	James B. Hunt
SC	761	R-69.5	(X)	(X)	934	R-50.4	(X)	(X)	David Beasley
GA	1,450	D-52.9	(X)	(X)	1,545	D-51.1	(X)	(X)	Zell Miller
FL	3,531	D-56.5	(X)	(X)	4,206	D-50.8	(X)	(X)	Lawton Chiles
E.S.C.:									
KY	835	D-64.7	(X)	(X)	984	D-50.9	(X)	(X)	Paul Patton
TN	790	D-60.8	(X)	(X)	1,487	R-54.3	(X)	(X)	Don Sundquist
AL	1,216	R-52.1	(X)	(X)	1,202	R-50.3	(X)	(X)	Fob James, Jr.
MS	711	R-50.8	(X)	(X)	819	R-55.6	(X)	(X)	Kirk Fordice
W.S.C.:									
AR	696	D-57.5	(X)	(X)	717	D-59.8	(X)	(X)	Jim Guy Tucker
LA	4,1728	D-61.2	(X)	(X)	51,550	R-63.5	(X)	(X)	Mike Foster
OK	911	D-57.4	(X)	(X)	995	R-46.9	(X)	(X)	Frank Keating
TX	3,893	D-49.5	(X)	(X)	4,396	R-53.5	(X)	(X)	George W. Bush
Mountain:									
MT	(X)	(X)	408	R-51.3	(X)	(X)	405	R-79.6	Marc Racicot
ID	321	D-68.2	(X)	(X)	413	R-52.3	(X)	(X)	Phil Batt
WY	160	D-65.4	(X)	(X)	201	R-58.7	(X)	(X)	Jim Geringer
CO	1,011	D-61.9	(X)	(X)	1,116	D-55.5	(X)	(X)	Roy Romer
NM	411	D-54.6	(X)	(X)	468	R-49.8	(X)	(X)	Gary Johnson
AZ	6,941	R-52.4	(X)	(X)	1,129	R-52.5	(X)	(X)	Fife Symington
UT	(X)	(X)	763	R-42.2	(X)	(X)	672	R-75.0	Mike Leavitt
NV	321	D-64.8	(X)	(X)	371	D-53.9	(X)	(X)	Bob Miller
Pacific:									
WA	(X)	(X)	2,271	D-52.2	(X)	(X)	2,237	D-58.0	Gary Locke
OR	1,113	D-45.7	(X)	(X)	1,221	D-50.9	(X)	(X)	John Kitzhaber
CA	7,699	R-49.2	(X)	(X)	8,659	R-55.2	(X)	(X)	Pete Wilson
AK	195	I-38.9	(X)	(X)	213	D-41.1	(X)	(X)	James Campbell
HI	340	D-59.8	(X)	(X)	369	D-36.6	(X)	(X)	Ben Cayetano

X Not applicable. ¹ Includes minor party and scattered votes. ² Voting years 1989 and 1993. ³ Voting years 1987, 1991, and 1995. ⁴ Result of runoff election in 1991. ⁵ Result of runoff election in November 1995. ⁶ Result of runoff election in February 1991.

Source: Congressional Quarterly, Inc., Washington, DC, *America Votes*, biennial; and unpublished data, (copyright) and Congressional Quarterly, Inc., Washington, DC, *Congressional Quarterly Weekly Report*, vol. 53, No. 15, April 15, 1995, and unpublished data (copyright).

No. 454. Composition of State Legislatures, by Political Party Affiliation: 1990 to 1996

[Data reflect election results in year shown for most States; and except as noted, results in previous year for other States. Figures reflect immediate results of elections, including holdover members in State houses which do not have all of their members running for re-election. Dem.=Democrat, Rep.=Republican. In general, Lower House refers to body consisting of State Representatives; Upper House, of State Senators]

STATE	LOWER HOUSE								UPPER HOUSE							
	1990 ^{1 2}		1992 ^{3 4}		1994 ^{5 6}		1996		1990 ^{1 7}		1992 ^{3 8}		1994 ⁹		1996 ^{5 9}	
	Dem.	Rep.	Dem.	Rep.	Dem.	Rep.	Dem.	Rep.	Dem.	Rep.	Dem.	Rep.	Dem.	Rep.	Dem.	Rep.
U.S.	3,242	2,202	3,186	2,223	2,817	2,603	2,886	2,539	1,186	757	1,132	799	1,021	905	998	931
AL ¹⁰	82	23	82	23	74	31	72	33	28	7	27	8	23	12	22	12
AK ¹¹	23	17	20	18	17	22	16	24	10	10	10	10	8	12	7	13
AZ ¹²	27	33	25	35	22	38	22	38	17	13	12	18	11	19	12	18
AR ¹¹	90	9	88	11	88	12	86	13	31	4	30	5	28	7	28	6
CA ¹¹	47	33	47	33	39	40	43	37	25	13	21	16	21	17	25	15
CO ¹²	27	38	31	34	24	41	24	41	12	23	16	19	16	19	15	20
CT ¹²	87	64	85	64	90	61	97	54	20	16	19	17	17	19	19	17
DE ¹¹	17	24	18	23	14	27	14	27	15	6	15	6	12	9	13	8
FL ¹²	74	46	71	49	63	57	59	61	22	18	20	20	19	21	17	23
GA ¹²	145	35	128	51	114	65	106	74	45	11	41	15	35	20	34	22
HI ¹¹	45	6	47	4	44	7	39	12	22	3	22	3	23	2	23	2
ID ¹¹	28	56	20	50	13	57	11	59	21	21	12	23	8	27	5	30
IL ¹¹	72	46	67	51	54	64	60	58	31	28	27	32	26	33	28	31
IN ¹¹	52	48	55	45	44	56	50	50	24	26	22	28	20	30	19	31
IA ¹¹	55	45	49	51	36	64	46	54	29	21	27	23	27	23	21	29
KANS ¹¹	63	62	59	66	45	80	48	77	18	22	13	27	13	27	13	27
KY ¹¹	68	32	71	29	64	36	64	36	27	11	25	13	21	17	20	18
LA ¹⁰	89	16	88	16	86	17	76	28	34	5	33	6	33	6	25	14
ME ¹⁰	97	54	93	58	77	74	81	69	21	14	20	15	16	18	19	15
MD ¹⁰	116	25	116	25	100	41	100	41	38	9	38	9	32	15	32	15
MA ¹²	118	37	123	34	125	34	134	25	25	15	31	9	30	10	34	6
MI ¹¹	61	49	55	55	53	56	58	52	18	20	16	22	16	22	16	22
MN ¹¹	78	56	85	49	71	63	70	64	46	21	45	22	43	21	42	24
MO ¹¹	98	23	91	29	89	31	88	75	33	43	9	37	15	36	14	18
MS ¹¹	99	64	98	65	87	76	88	75	23	11	20	14	19	15	19	15
MT ¹¹	61	39	47	53	33	67	35	65	29	21	30	20	19	31	16	34
NE ¹¹	(13)	(13)	(13)	(13)	(13)	(13)	(13)	(13)	(13)	(13)	(13)	(13)	(13)	(13)	(13)	(13)
NV ¹¹	22	19	27	12	21	21	25	17	10	10	10	11	8	13	9	12
NH ¹²	125	268	136	258	112	286	143	255	11	13	11	13	6	18	9	15
NJ ¹¹	22	58	27	53	28	52	30	50	13	27	16	24	16	24	16	24
NM ¹¹	49	21	53	17	46	24	42	28	26	16	27	15	27	15	25	17
NY ¹²	95	55	100	50	94	56	96	54	26	35	26	35	25	36	26	35
NC ¹¹	81	39	78	42	52	68	59	61	36	14	39	11	26	24	30	20
ND ¹¹	48	58	33	65	23	75	26	72	27	26	25	24	20	29	19	30
OH ¹¹	61	38	53	46	43	56	39	60	12	21	13	20	13	20	12	21
OK ¹¹	68	33	70	31	65	36	65	36	37	11	37	11	35	13	33	15
OR ¹¹	28	32	28	32	26	34	29	31	20	10	16	14	11	19	10	20
PA ¹¹	107	94	105	98	101	102	99	104	24	26	24	25	21	29	20	30
RI ¹²	89	11	85	15	84	16	84	16	45	5	39	11	40	10	41	9
SC ¹¹	79	43	71	52	58	62	53	70	33	13	30	16	29	17	26	20
SD ¹²	25	45	28	42	24	46	23	47	17	18	20	15	16	19	13	22
TN ¹¹	57	42	63	36	59	40	61	38	20	13	19	14	18	15	18	15
TX ¹¹	93	57	91	58	89	61	82	68	22	9	18	13	17	14	14	16
UT ¹²	31	44	26	49	20	55	20	55	10	19	11	18	10	19	9	20
VT ¹¹	73	75	87	57	86	61	89	57	15	15	14	16	12	18	17	13
VA ¹¹	58	41	52	47	52	47	53	46	22	18	22	18	22	18	20	20
WA ¹¹	58	40	65	33	38	60	45	53	24	25	28	21	25	24	23	26
WV ¹¹	74	26	79	21	69	30	74	25	33	1	32	2	26	8	25	9
WI ¹¹	58	41	51	47	48	51	47	52	19	14	16	17	16	17	17	16
WY ¹¹	22	42	19	41	13	47	17	43	10	20	10	20	10	20	9	21

¹ Status as of May 1992; reflects results of elections held in LA, KY, MS, and NJ in 1991. ² Excludes one Independent each for MA, MS, NH, SC, and VA; one Independent Democrat for NH; two Independents for VT; one vacancy each for AR, NV, and SC; two vacancies for PA; four vacancies for MA; and five vacancies for NH. ³ Status as of November 11, 1993. ⁴ Excludes one Independent each for AR, LA, NH, SC, and VA; two Independents each for AK and MS; four Independents for VT; members of political parties other than Democratic, Republican, or Independent (one in MA, two in VT, and four in NH); one vacancy each for GA, NH, TX, and WI; two vacancies each for CT and MA; and three vacancies for NV. ⁵ Status as of December 7, 1994. ⁶ Excludes one Independent each for AK, CA, LA, and VA; two Independents each for MS and VT; four Independents for SC; members of political parties other than Democratic, Republican, or Independent (one each in MA and VT and two in NH); one undecided in GA; and one vacancy each in LA, MI, and WV. ⁷ Excludes two Independents for CA; and one vacancy for NV. ⁸ Excludes two Independents for CA; and one vacancy each for CA and PA. ⁹ Excludes one Independent in ME, two Independents in CA, one vacancy in GA, two vacancies in MS, and three vacancies in MN. ¹⁰ Members of both houses serve 4-year terms. ¹¹ Upper House members serve 4-year terms and Lower House members serve 2-year terms. ¹² Members of both houses serve 2-year terms. ¹³ Single chamber (unicameral body) of 49 members, elected without party designation.

Source: 1990, The Council of State Governments, Lexington, KY, *State Elective Officials and the Legislatures*, biennial (copyright); 1992, 1994, and 1996, National Conference of State Legislatures, Denver, CO, unpublished data (copyright).

No. 455. Political Party Control of State Legislatures, by Party: 1975 to 1997

[As of beginning of year. Until 1972 there were two nonpartisan legislatures in Minnesota and Nebraska. Since then only Nebraska has had a nonpartisan legislature]

YEAR	LEGISLATURES UNDER—			YEAR	LEGISLATURES UNDER—			YEAR	LEGISLATURES UNDER—		
	Democ- ratic control	Split control or tie	Repub- lican control		Democ- ratic control	Split control or tie	Repub- lican control		Democ- ratic control	Split control or tie	Repub- lican control
1975 . . .	37	7	5	1985 . . .	27	11	11	1993 . . .	25	16	8
1977 . . .	36	8	5	1987 . . .	28	12	9	1994 . . .	24	17	8
1979 . . .	30	7	12	1989 ² . . .	28	13	8	1995 . . .	18	12	19
1981 . . .	28	6	15	1990 . . .	29	11	9	1996 . . .	16	15	18
1983 ¹ . . .	34	4	11	1992 . . .	29	14	6	1997 . . .	20	11	18

¹ Two 1984 midterm recall elections resulted in a change in control of the Michigan State Senate. At the time of the 1984 election, therefore, Democrats controlled 33 legislatures. ² A party change during the year by a Democratic representative broke the tie in the Indiana House of Representatives, giving the Republicans control of both chambers.

Source: National Conference of State Legislatures, Denver, CO, *State Legislatures*, periodic.

No. 456. Local Elected Officials, by Sex, Race, Hispanic Origin, and Type of Government: 1992

SEX, RACE, AND HISPANIC ORIGIN	Total	GENERAL PURPOSE			SPECIAL PURPOSE	
		County	Municipal	Town, township	School district	Special district
Total	493,830	58,818	135,531	126,958	88,434	84,089
Male	324,255	43,563	94,808	76,213	54,443	55,228
Female	100,531	12,525	26,825	27,702	24,730	8,749
Sex not reported	69,044	2,730	13,898	23,043	9,261	20,112
White	405,905	52,705	114,880	102,676	73,894	61,750
Black	11,542	1,715	4,566	369	4,222	670
American Indian, Eskimo, Aleut	1,800	147	776	86	564	227
Asian, Pacific Islander	514	80	97	16	184	137
Hispanic	5,859	906	1,701	216	2,466	570
Non-Hispanic	413,902	53,741	118,618	102,931	76,398	62,214
Race, Hispanic origin not reported	74,069	4,171	15,212	23,811	9,570	21,305

Source: U.S. Bureau of the Census, *1992 Census of Governments, Popularly Elected Officials*, (GC92(1)-2).

No. 457. Women Holding State Public Offices, by Office and State: 1996

[As of January. For data on women in U.S. Congress, see table 448]

STATE	State- wide executive office ¹	State legisla- ture	STATE	State- wide executive office ¹	State legisla- ture	STATE	State- wide executive office ¹	State legisla- ture
United States	80	1,539	Kentucky	-	11	North Dakota	5	21
Alabama	3	5	Louisiana	1	16	Ohio	2	31
Alaska	1	14	Maine	-	49	Oklahoma	3	16
Arizona	3	27	Maryland	1	54	Oregon	1	27
Arkansas	2	17	Massachusetts	-	47	Pennsylvania	2	29
California	2	24	Michigan	2	33	Rhode Island	1	36
Colorado	3	33	Minnesota	3	51	South Carolina	1	21
Connecticut	2	50	Mississippi	1	20	South Dakota	3	20
Delaware	4	13	Missouri	² 2	39	Tennessee	1	18
Florida	1	31	Montana	1	36	Texas	1	32
Georgia	1	42	Nebraska	1	11	Utah	2	15
Hawaii	1	15	Nevada	1	22	Vermont	1	55
Idaho	2	30	New Hampshire	-	125	Virginia	-	21
Illinois	2	41	New Jersey	1	18	Washington	4	59
Indiana	4	33	New Mexico	2	23	West Virginia	-	21
Iowa	1	27	New York	1	37	Wisconsin	-	31
Kansas	3	46	North Carolina	-	28	Wyoming	2	18

- Represents zero. ¹ Excludes women elected to the judiciary, women appointed to State cabinet-level positions, women elected to executive posts by the legislature, and elected members of university Board of Trustees or board of education. ² Includes one official who was appointed to an elective position.

Source: Center for the American Woman and Politics, Eagleton Institute of Politics, Rutgers University, New Brunswick, NJ, information releases, (copyright).

No. 458. Black Elected Officials, by Office, 1970 to 1993, and by Region and State, 1993

[As of **January 1993**, no Black elected officials had been identified in Hawaii, Idaho, Montana, North Dakota, or Utah]

REGION, DIVISION, AND STATE	Total	U.S. and State legislatures ¹	City and county offices ²	Law enforcement ³	Educa-tion ⁴	REGION, DIVISION, AND STATE	Total	U.S. and State legisla-tures ¹	City and county offices ²	Law enforce-ment ³	Educa-tion ⁴
1970 (Feb.)	1,469	179	715	213	362	South	5,492	328	3,675	518	971
1980 (July)	4,890	326	2,832	526	1,206	S.A.	2,200	173	1,522	147	358
1985 (Jan.)	6,016	407	3,517	661	1,431	DE	23	3	14	-	6
1990 (Jan.)	7,335	436	4,485	769	1,645	MD	140	32	79	23	6
1991 (Jan.)	7,445	473	4,496	847	1,629	DC	198	54	185	-	9
1992 (Jan.)	7,517	499	4,557	847	1,614	VA	155	14	126	15	-
1993 (Jan.)	7,984	561	4,819	922	1,682	WV	21	1	17	3	-
Northeast . . .	777	96	291	126	264	NC	468	28	328	31	81
N.E.	109	35	60	4	10	SC	450	26	269	15	140
ME	1	-	1	-	-	GA	545	43	371	32	99
NH	2	-	-	-	-	FL	200	22	133	28	17
VT	2	-	-	-	-	E.S.C.	1,681	85	1,175	175	246
MA	30	8	18	2	2	KY	63	4	47	5	7
RI	12	9	3	-	-	TN	168	16	104	24	24
CT	62	14	38	2	8	AL	699	23	529	58	89
M.A.	668	61	231	122	254	MS	751	42	495	88	126
NY	299	30	63	70	136	W.S.C.	1,611	70	978	196	367
NJ	211	13	113	-	85	AR	380	13	214	51	102
PA	158	18	55	52	33	LA	636	33	346	104	153
Midwest	1,361	106	757	171	327	OK	123	6	95	1	21
E.N.C.	1,119	78	604	143	294	TX	472	18	323	40	91
OH	219	16	124	30	49	West	354	31	96	107	120
IN	72	12	50	4	6	Mountain . .	49	11	11	16	11
IL	465	25	282	37	121	WY	1	-	-	-	1
MI	333	17	133	68	115	CO	20	4	4	10	2
WI	30	8	15	4	3	NM	3	-	-	2	1
W.N.C.	242	28	153	28	33	AZ	15	4	3	3	5
MN	16	1	2	10	3	NV	10	3	4	1	2
IA	11	1	6	1	3	Pacific	305	20	85	91	109
MO	185	18	134	14	19	WA	19	2	9	5	3
SD	3	1	2	-	-	OR	10	4	2	4	-
NE	6	-	7	-	3	CA	273	13	72	82	106
KS	21	6	7	3	5	AK	3	1	2	-	-

- Represents zero. ¹ Includes elected State administrators. ² County commissioners and councilmen, mayors, vice mayors, aldermen, regional officials, and other. ³ Judges, magistrates, constables, marshals, sheriffs, justices of the peace, and other. ⁴ Members of State education agencies, college boards, school boards, and other. ⁵ Includes two shadow senators and one shadow representative.

Source: Joint Center for Political and Economic Studies, Washington, DC, *Black Elected Officials: A National Roster*, annual, (copyright).

No. 459. Hispanic Public Officials, by Office, 1985 to 1994, and by State, 1994

[As of **September**. For States not shown, no Hispanic public officials had been identified]

REGION, DIVISION, AND STATE	Total	State executives and legisla-tors	County and municipal officials	Judicial and law enforcement	Educa-tion and school boards	REGION, DIVISION, AND STATE	Total	State executives and legisla-tors	County and municipal officials	Judicial and law enforcement	Educa-tion and school boards
1985	3,147	129	1,316	517	1,185	South	2,298	61	1,059	410	768
1990	4,004	144	1,819	583	1,458	S.A.	68	16	35	13	4
1991	4,202	151	1,867	596	1,588	DE	2	-	1	-	-
1992	4,994	150	1,908	628	2,308	MD	2	-	1	-	1
1993	5,170	182	2,023	633	2,332	DC	1	-	-	-	-
1994	5,459	199	2,197	651	2,412	FL	64	16	33	12	3
Northeast . . .	156	28	42	13	73	W.S.C.	2,230	45	1,024	397	764
N.E.	28	13	9	-	6	AR	2	1	-	-	1
MA	1	-	-	-	1	LA	12	3	1	8	-
RI	1	-	-	-	-	OK	1	-	1	-	-
CT	26	12	9	-	5	TX	2,215	41	1,022	389	763
M.A.	128	15	33	13	67	West	2,088	95	1,053	220	720
NY	83	12	13	11	47	Mountain . .	1,270	74	697	167	332
NJ	37	2	17	1	17	ID	2	-	-	1	1
PA	9	1	3	1	3	MT	2	1	1	-	-
Midwest	917	15	43	8	85	UT	3	-	2	-	-
E.N.C.	903	8	39	7	849	WY	201	9	140	10	42
OH	4	-	1	2	1	CO	716	50	410	105	151
IN	8	1	5	1	1	NM	341	11	144	50	136
IL	881	7	26	3	845	AZ	1	-	-	-	-
MI	8	-	5	1	2	UT	1	-	-	-	-
WI	2	-	2	-	-	NV	4	1	-	1	2
W.N.C.	14	7	4	1	2	Pacific	818	21	356	53	388
MN	3	2	1	1	-	WA	14	2	4	2	6
MO	1	-	1	-	-	OR	5	-	3	1	1
NE	3	-	2	-	-	CA	796	16	349	50	381
KS	7	5	1	-	1	AK	1	1	-	-	-
						HI	2	2	-	-	-

- Represents zero. ¹ Includes U.S. Representatives. ² Includes local school council members in the Chicago area. Source: National Association of Latino Elected and Appointed Officials, Washington, DC, *National Roster of Hispanic Elected Officials*, annual.

No. 460. Public Confidence Levels in Selected Public and Private Institutions: 1996

[Based on a sample survey of 1,509 persons 18 years old and over conducted during the spring and subject to sampling variability; see source]

INSTITUTION	LEVEL OF CONFIDENCE				
	A great deal	Quite a lot	Some	Very little	Can't say/ no answer
Religious organizations	23.6	31.1	31.3	12.3	1.7
Higher education (colleges or univ.)	18.3	38.7	28.3	7.5	7.1
Private elementary or secondary education	15.1	35.3	33.4	9.7	6.5
Youth development and recreation organizations	14.8	35.2	32.7	11.6	5.7
Federated charitable appeals	12.6	26.3	34.9	21.6	4.5
Health organizations	10.8	28.2	42.0	15.9	3.1
Environmental organizations	9.4	23.1	41.0	20.3	6.2
Human service organizations	9.1	28.1	42.6	15.1	5.0
Recreational organizations (adult)	7.8	27.5	41.9	13.4	9.4
Arts, culture, & humanities organizations	9.3	26.7	39.8	14.3	9.9
Private and community foundations	7.6	24.0	42.3	13.5	12.6
Public/society benefit organizations ¹	7.5	22.7	43.4	20.8	5.6
International/foreign organizations ²	6.3	19.1	37.5	24.2	12.8
Small businesses	15.3	40.8	32.6	7.6	3.6
Military	16.9	37.0	31.0	12.1	3.1
Public higher educ. (colleges or univ.)	15.0	36.4	34.2	11.6	2.8
Public elementary or secondary education	13.3	31.7	37.2	15.3	2.4
Organized labor	6.6	17.7	40.9	29.3	5.6
Media (e.g. newspapers, TV, radio)	6.3	22.7	39.5	29.7	1.8
Work-related organizations	6.1	21.5	47.2	17.4	7.9
Major corporations	4.9	18.7	44.2	27.4	4.8
State government	4.1	22.2	44.9	26.4	2.5
Organizations that lobby for a particular cause	4.0	15.7	42.7	29.5	8.1
Political organizations, parties	3.8	10.8	39.2	42.6	3.7
Local government	5.4	25.9	43.3	23.1	2.3
Federal government	5.2	17.5	43.9	31.1	2.2
Congress	3.4	12.4	41.7	39.0	3.5

¹ Civil rights, social justice, or community improvement organizations. ² Culture exchange or relief organizations.

Source: Hodgkinson, Virginia, Murray Weitzman, and the Gallup Organization, Inc., *Giving & Volunteering in the United States: 1994 Edition*. (Copyright and published by INDEPENDENT SECTOR, Washington, DC, 1996.)

No. 461. Political Party Identification of the Adult Population, by Degree of Attachment, 1972 to 1994, and by Selected Characteristics, 1994

[In percent. Covers citizens of voting-age living in private housing units in the contiguous United States. Data are from the National Election Studies and are based on a sample and subject to sampling variability; for details, see source]

YEAR AND SELECTED CHARACTERISTIC	Total	Strong Democrat	Weak Democrat	Independent Democrat	Independent	Independent Republican	Weak Republican	Strong Republican	Apolitical
1972	100	15	26	11	13	11	13	10	1
1980	100	18	23	11	13	10	14	9	2
1984	100	17	20	11	11	12	15	12	2
1986	100	18	22	10	12	11	15	11	2
1988	100	18	18	12	11	13	14	14	2
1990	100	20	19	12	11	12	15	10	2
1992	100	18	18	14	12	12	14	11	1
1994, total¹	100	15	19	13	10	12	15	16	1
Age:									
17 to 24 years old	100	9	20	22	10	8	19	10	1
25 to 34 years old	100	11	19	14	12	11	16	16	1
35 to 44 years old	100	13	18	14	12	11	14	18	-
45 to 54 years old	100	15	16	15	7	16	12	17	1
55 to 64 years old	100	18	22	8	8	16	12	15	-
65 to 74 years old	100	28	17	6	8	13	14	15	-
75 to 99 years old	100	19	26	9	9	5	17	13	2
Sex:									
Male	100	13	17	12	11	14	14	18	1
Female	100	18	21	13	10	9	15	13	1
Race:									
White	100	12	19	12	10	13	16	17	1
Black	100	38	23	20	8	4	2	3	1
Education:									
Grade school	100	26	26	7	13	7	11	6	4
High school	100	15	22	14	13	10	13	11	1
College	100	14	16	13	7	13	16	21	-

- Represents zero. ¹ Includes other characteristics, not shown separately.

Source: Center for Political Studies, University of Michigan, Ann Arbor, MI, unpublished data. Data prior to 1988 published in Warren E. Miller and Santa A. Traugott, *American National Election Studies Data Sourcebook, 1952-1986*, Harvard University Press, Cambridge, MA, 1989 (copyright).

No. 462. Voting-Age Population, Percent Reporting Registered, and Voted: 1980 to 1996

[As of **November**. Covers civilian noninstitutional population 18 years old and over. Includes aliens. Figures are based on Current Population Survey (see text, section 1, and Appendix III) and differ from those in table 464 based on population estimates and official vote counts]

CHARACTERISTIC	VOTING-AGE POPULATION (mil.)								PERCENT REPORTING THEY REGISTERED								PERCENT REPORTING THEY VOTED								
	1980	1984	1986	1988	1990	1992	1994	1996	Presidential election years				Congressional election years				Presidential election years				Congressional election years				
									1980	1988	1992	1996	1982	1986	1990	1994	1980	1988	1992	1996	1982	1986	1990	1994	
Total ¹	157.1	170.0	173.9	178.1	182.1	185.7	190.3	193.7	66.9	66.6	68.2	65.9	64.1	64.3	62.2	62.0	59.2	57.4	61.3	54.2	48.5	46.0	45.0	44.6	
18 to 20 years old	12.3	11.2	10.7	10.7	10.8	9.7	10.3	10.8	44.7	44.9	48.3	45.6	35.0	35.4	37.2	35.7	33.2	38.5	31.2	19.8	18.6	18.4	16.5		
21 to 24 years old	15.9	16.7	15.7	14.8	14.0	14.6	14.9	13.9	52.7	50.6	55.3	51.2	47.8	46.6	43.3	45.5	43.1	38.3	45.7	33.4	28.4	24.2	22.0	22.3	
25 to 34 years old	35.7	40.3	41.9	42.7	42.7	41.6	41.1	40.1	62.0	57.8	60.6	56.9	57.1	55.8	52.0	51.5	54.6	48.0	53.2	43.1	40.4	35.1	33.8	32.2	
35 to 44 years old	25.6	30.7	33.0	35.2	37.9	39.7	41.9	43.3	70.6	69.3	69.2	66.5	67.5	67.9	65.5	63.3	64.4	61.3	63.6	54.9	52.2	49.3	48.4	46.0	
45 to 64 years old	43.6	44.3	44.8	45.9	46.9	49.1	50.9	53.7	75.8	75.5	75.3	73.5	75.6	74.8	71.4	71.0	69.3	67.9	70.0	(NA)	62.2	58.7	55.8	56.0	
65 years old and over	24.1	26.7	27.7	28.8	29.9	30.8	31.1	31.9	74.6	78.4	78.0	77.0	75.2	76.9	76.5	75.6	65.1	68.8	70.1	(NA)	59.9	60.9	60.3	60.7	
Male	74.1	80.3	82.4	84.5	86.6	88.6	91.0	92.6	66.6	65.2	66.9	64.4	63.7	63.4	61.2	60.8	59.1	56.4	60.2	52.8	48.7	45.8	44.6	44.4	
Female	83.0	89.6	91.5	93.6	95.5	97.1	99.3	101.0	67.1	67.8	69.3	67.3	64.4	65.0	63.1	63.2	59.4	58.3	62.3	55.5	48.4	46.1	45.4	44.9	
White	137.7	146.8	149.9	152.9	155.6	157.8	160.3	162.8	68.4	67.9	70.1	67.7	65.6	65.3	63.8	64.2	60.9	59.1	63.6	56.0	49.9	47.0	46.7	46.9	
Black	16.4	18.4	19.0	19.7	20.4	21.0	21.8	22.5	60.0	64.5	63.9	63.5	59.1	64.0	58.8	58.3	50.5	51.5	54.0	50.6	43.0	43.2	39.2	37.0	
Hispanic ²	8.2	9.5	11.8	12.9	13.8	14.7	17.5	18.4	36.3	35.5	35.0	35.7	35.3	35.9	32.3	30.0	29.9	28.8	28.9	26.7	25.3	24.2	21.0	19.1	
Region: ³																									
Northeast	35.5	36.9	37.3	37.9	38.1	38.3	38.4	38.3	64.8	64.8	67.0	64.7	62.5	62.0	61.0	60.9	58.5	57.4	61.2	54.5	49.8	44.4	45.2	45.2	
Midwest	41.5	42.1	42.8	43.3	43.9	44.4	44.5	45.2	73.8	72.5	74.6	71.6	71.1	70.7	68.2	68.7	65.8	62.9	67.2	59.3	54.7	49.5	48.6	48.8	
South	50.6	57.6	59.2	60.7	62.4	63.7	66.4	68.1	64.8	65.6	67.2	65.9	61.7	63.0	61.3	60.7	55.6	54.5	59.0	52.2	41.8	43.0	42.4	40.5	
West	29.5	33.4	34.6	36.2	37.7	39.3	41.0	42.1	63.3	63.0	63.6	60.8	60.6	60.8	57.7	58.1	57.2	55.6	58.5	51.8	50.7	48.4	45.0	46.4	
School years completed:																									
8 years or less	22.7	20.6	19.6	19.1	17.7	15.4	14.7	14.1	53.0	47.5	43.9	40.7	52.3	50.5	44.0	40.1	42.6	36.7	35.1	28.1	35.7	32.7	27.7	23.2	
High school:																									
1 to 3 years	22.5	22.1	21.4	21.1	21.0	⁴ 21.0	⁴ 20.7	21.0	54.6	52.8	⁵ 50.4	47.9	53.3	52.4	47.9	⁴ 44.7	45.6	41.3	⁴ 41.2	33.8	37.7	33.8	30.9	⁴ 27.0	
4 years	61.2	67.8	68.6	70.0	71.5	⁶ 65.3	⁶ 64.9	65.2	66.4	64.6	⁶ 64.9	62.2	62.9	62.9	60.0	⁵ 58.9	58.9	54.7	⁵ 57.5	49.1	44.1	44.1	40.2	⁵ 40.5	
College:																									
1 to 3 years	26.7	30.9	33.0	34.3	36.3	⁶ 46.7	⁶ 50.4	50.9	74.4	73.5	⁶ 75.4	72.9	70.0	70.0	68.7	⁶ 68.4	67.2	64.5	⁶ 68.7	60.5	53.3	49.9	50.0	⁶ 49.1	
4 years or more	24.0	28.6	31.3	33.6	35.6	⁷ 37.4	⁷ 39.4	42.5	84.3	83.1	⁷ 84.8	80.4	79.4	77.8	77.3	⁷ 76.3	79.9	77.6	⁷ 81.0	73.0	66.5	62.5	62.5	⁷ 63.1	
Employed	95.0	104.2	108.5	113.8	115.5	116.3	122.6	125.6	68.7	67.1	69.9	67.0	65.5	64.4	62.6	62.9	61.8	58.4	63.8	55.2	50.0	45.7	45.1	45.2	
Unemployed	6.9	7.4	6.6	5.8	6.7	8.3	6.5	6.4	50.3	50.4	53.7	52.5	49.8	50.6	44.6	46.4	41.2	38.6	46.2	37.2	34.1	31.2	27.9	28.3	
Not in labor force	55.2	58.4	58.8	58.5	59.9	61.1	61.2	61.6	65.8	67.2	66.8	65.1	64.3	65.4	63.4	61.9	57.0	57.3	58.7	54.1	48.7	48.2	46.7	45.3	

NA Not available. ¹ Includes other races not shown separately. ² Hispanic persons may be of any race. ³ For composition of regions, see table 27. ⁴ Represents those who completed 9th to 12th grade, but have no high school diploma. ⁵ High school graduate. ⁶ Some college or associate degree. ⁷ Bachelor's or advanced degree.

Source: U.S. Bureau of the Census, *Current Population Reports*, P20-453 and P20-466; and unpublished data.

No. 463. Persons Reported Registered and Voted, by State: 1994

[See headnote, table 462]

STATE	Voting-age population (1,000)	PERCENT OF VOTING-AGE POPULATION		STATE	Voting-age population (1,000)	PERCENT OF VOTING-AGE POPULATION	
		Registered	Voted			Registered	Voted
U.S.	190,267	62.0	44.6	DC	440	66.9	55.6
Northeast	38,386	60.9	45.2	VA	4,760	60.0	45.7
N.E.	9,865	67.8	51.0	WV	1,396	60.8	33.9
ME	909	81.6	58.2	NC	5,211	60.8	35.7
NH	832	64.3	41.2	SC	2,681	60.8	45.2
VT	432	70.7	48.8	GA	5,105	54.9	35.4
MA	4,532	65.6	51.6	FL	10,582	55.5	42.3
RI	729	64.2	50.6	E.S.C.	11,662	66.7	41.9
CT	2,431	68.4	51.3	KY	2,807	62.5	34.5
M.A.	28,521	58.5	43.1	TN	3,856	63.7	43.0
NY	13,599	56.8	44.6	AL	3,136	70.6	45.8
NJ	5,918	61.6	40.3	MS	1,863	72.6	44.3
PA	9,004	58.9	42.7	W.S.C.	20,273	61.0	38.5
Midwest	44,505	68.7	48.7	AR	1,801	60.0	41.6
E.N.C.	31,463	66.4	46.1	LA	3,013	70.6	34.2
OH	8,152	64.6	46.6	OK	2,325	65.8	46.8
IN	4,191	55.6	38.7	TX	13,134	58.2	37.6
IL	8,561	63.0	42.8	West	41,009	58.1	46.4
MI	6,921	77.2	52.2	Mountain.	10,911	60.0	45.9
WI	3,638	77.2	49.6	MT	619	73.2	60.7
W.N.C.	13,042	74.3	55.2	ID	798	63.0	50.7
MN	3,296	80.9	58.4	WY	333	69.0	63.5
IA	2,059	71.7	52.5	CO	2,703	64.3	48.4
MO	3,797	72.3	54.5	NM	1,175	58.8	46.8
ND	441	93.3	61.1	AZ	2,971	56.0	41.6
SD	495	75.4	63.9	UT	1,231	59.4	44.1
NE	1,156	72.6	54.3	NV	1,081	49.5	40.1
KS	1,798	65.3	50.5	Pacific	30,098	57.4	46.6
South.	66,364	60.7	40.5	WA	3,924	66.8	46.3
S.A.	34,429	58.4	41.2	OR	2,309	72.7	60.9
DE	528	58.7	41.2	CA	22,639	54.2	45.0
MD	3,726	62.6	46.2	AK	393	71.7	59.1
				HI	833	51.5	46.0

Source: U.S. Bureau of the Census, unpublished data.

No. 464. Participation in Elections for President and U.S. Representatives: 1932 to 1996

[As of **November**. Estimated resident population 21 years old and over, 1932-70, except as noted, and 18 years old and over thereafter; includes Armed Forces. Prior to 1960, excludes Alaska and Hawaii. District of Columbia is included in votes cast for President beginning 1964 and in votes cast for Representative from 1972 to 1992]

YEAR	Resident population (incl. aliens) of voting age ¹ (1,000)	VOTES CAST				YEAR	Resident population (incl. aliens) of voting age ¹ (1,000)	VOTES CAST			
		For President ² (1,000)	Per cent of voting-age population	For U.S. Representatives (1,000)	Per cent of voting-age population			For President ² (1,000)	Per cent of voting-age population	For U.S. Representatives (1,000)	Per cent of voting-age population
1932 . . .	75,768	39,758	52.5	37,657	49.7	1966 . . .	116,638	(X)	(X)	52,908	45.4
1934 . . .	77,997	(X)	(X)	32,256	41.4	1968 . . .	120,285	73,212	60.9	66,288	55.1
1936 . . .	80,174	45,654	56.9	42,886	53.5	1970 . . .	124,498	(X)	(X)	54,173	43.5
1938 . . .	82,354	(X)	(X)	36,236	44.0	1972 . . .	140,777	77,719	55.2	71,430	50.7
1940 . . .	84,728	49,900	58.9	46,951	55.4	1974 . . .	146,338	(X)	(X)	52,495	35.9
1942 . . .	86,465	(X)	(X)	28,074	32.5	1976 . . .	152,308	81,556	53.5	74,422	48.9
1944 . . .	85,654	47,977	56.0	45,103	52.7	1978 . . .	158,369	(X)	(X)	55,332	34.9
1946 . . .	82,659	(X)	(X)	34,398	37.1	1980 . . .	163,945	86,515	52.8	77,995	47.6
1948 . . .	95,573	48,794	51.1	45,933	48.1	1982 . . .	169,643	(X)	(X)	64,514	38.0
1950 . . .	98,134	(X)	(X)	40,342	41.1	1984 . . .	173,995	92,653	53.3	83,231	47.8
1952 . . .	99,929	61,551	61.6	57,571	57.6	1986 . . .	177,922	(X)	(X)	59,619	33.5
1954 . . .	102,075	(X)	(X)	42,580	41.7	1988 . . .	181,956	91,595	50.3	81,786	44.9
1956 . . .	104,515	62,027	59.3	58,426	55.9	1990 . . .	185,812	(X)	(X)	61,513	33.1
1958 . . .	106,447	(X)	(X)	45,818	43.0	1992 . . .	189,524	104,425	55.1	96,239	50.8
1960 . . .	109,672	68,838	62.8	64,133	58.5	1994 . . .	193,650	(X)	(X)	70,780	37.4
1962 . . .	112,952	(X)	(X)	51,267	45.4	1996 . . .	196,509	96,273	48.9	89,832	45.7
1964 . . .	114,090	70,645	61.9	65,895	57.8						

X Not applicable. ¹ Population 18 and over in Georgia, 1944-70, and in Kentucky, 1956-70; 19 and over in Alaska and 20 and over in Hawaii, 1960-70. ² Source: 1932-58, U.S. Congress, Clerk of the House, *Statistics of the Presidential and Congressional Election*, biennial.

Source: Except as noted, U.S. Bureau of the Census, *Current Population Reports*, P25-1085; Congressional Quarterly Inc., Washington, DC. *America Votes*, biennial, (copyright).

No. 465. Resident Population of Voting Age and Percent Casting Votes—States: 1988 to 1996

[As of November. Estimated population, 18 years old and over. Includes Armed Forces stationed in each State, aliens, and institutional population]

REGION, DIVISION, AND STATE	VOTING-AGE POPULATION						PERCENT CASTING VOTES FOR—					
	1988 (1,000)	1990 (1,000)	1992 (1,000)	1994 (1,000)	1996, proj. (1,000)			Presidential electors		U.S. Representatives		
					Total	Black	His- panic ¹	1992	1996	1992	1994	1996
U.S.	181,956	185,812	189,524	193,650	196,509	22,857	18,609	55.1	49.0	50.8	36.0	45.6
Northeast	38,670	38,838	38,920	38,849	38,861	4,398	2,903	55.4	50.4	49.9	37.1	46.6
N.E.	10,069	10,137	10,091	10,017	10,081	473	459	62.9	56.6	58.6	44.0	53.6
ME	902	924	932	931	939	4	6	72.9	64.5	71.8	54.0	63.9
NH	817	835	838	843	860	5	9	64.2	58.0	61.0	36.7	57.1
VT	411	422	429	429	441	2	3	67.5	58.6	65.6	49.3	57.8
MA	4,642	4,646	4,616	4,564	4,623	234	229	60.1	55.3	56.6	43.3	52.1
RI	772	776	768	764	750	29	39	59.0	52.0	51.9	44.8	48.0
CT	2,525	2,534	2,508	2,486	2,468	199	173	64.4	56.4	57.2	43.0	52.4
M.A.	28,601	28,701	28,829	28,832	28,780	3,925	2,444	52.8	48.3	46.9	34.6	44.1
NY	13,659	13,683	13,705	13,646	13,579	2,292	1,616	50.5	46.5	43.2	33.8	40.9
PA	5,905	5,927	5,964	5,974	6,005	819	632	56.1	51.2	50.2	33.6	47.0
NJ	9,037	9,091	9,161	9,212	9,196	814	196	54.1	49.0	50.1	36.6	46.9
Midwest	43,684	44,160	44,803	45,529	46,021	4,248	1,394	61.9	54.2	58.5	41.2	52.6
E.N.C.	30,775	31,133	31,636	32,083	32,382	3,594	1,156	60.4	52.6	56.6	38.5	50.8
OH	7,986	8,066	8,207	8,313	8,358	866	112	60.2	54.3	55.8	39.7	52.5
IN	4,046	4,105	4,209	4,298	4,369	331	81	54.8	48.9	52.7	36.0	47.7
IL	8,411	8,495	8,598	8,712	8,764	1,245	728	58.7	49.2	56.2	34.9	47.1
MI	6,774	6,851	6,947	6,983	7,067	972	159	61.5	54.5	55.9	43.0	52.3
WI	3,559	3,616	3,675	3,777	3,824	180	76	68.9	57.4	65.0	38.6	56.2
W.N.C.	12,910	13,027	13,167	13,446	13,639	654	238	65.6	58.1	63.3	47.7	56.9
MN	3,167	3,222	3,272	3,362	3,412	65	44	71.8	64.3	69.5	52.0	62.8
IA	2,053	2,061	2,073	2,112	2,138	38	30	65.3	57.7	59.9	46.3	56.1
MO	3,770	3,813	3,851	3,902	3,980	397	47	62.1	54.2	61.0	45.2	53.2
ND	470	462	462	467	473	3	3	66.7	56.3	64.5	50.4	55.6
SD	498	498	505	522	530	3	4	66.6	61.1	65.9	58.6	60.9
NE	1,145	1,152	1,164	1,192	1,208	41	35	63.4	56.1	61.1	47.9	54.8
KS	1,809	1,819	1,840	1,889	1,898	107	75	62.9	56.6	61.1	43.3	55.3
South	62,134	63,821	65,609	67,501	69,173	11,996	5,859	51.3	45.9	45.9	30.2	40.7
S.A.	32,148	33,312	34,210	35,211	36,011	6,947	1,891	50.3	46.0	46.7	30.3	41.8
DE	490	507	521	534	547	92	15	55.6	49.5	53.0	36.5	48.8
MD	3,536	3,640	3,705	3,750	3,811	982	110	53.6	46.7	48.8	35.9	43.0
DC	503	481	467	452	435	269	20	48.7	42.7	42.1	(NA)	(NA)
VA	4,572	4,716	4,855	4,967	5,089	924	133	52.7	47.5	48.8	38.4	43.2
WV	1,358	1,349	1,376	1,389	1,414	40	7	49.7	45.0	40.9	29.3	36.9
NC	4,903	5,061	5,190	5,364	5,499	1,126	69	50.3	45.8	48.7	29.6	45.7
SC	2,505	2,587	2,669	2,740	2,777	771	27	45.1	41.5	41.8	31.7	38.1
GA	4,631	4,791	5,006	5,159	5,396	1,368	101	46.4	42.6	44.2	29.0	40.1
FL	9,651	10,180	10,422	10,856	11,043	1,375	1,409	51.0	48.0	247.2	226.3	42.5
E.S.C.	11,085	11,252	11,547	11,813	12,124	2,166	76	53.2	47.1	49.0	33.3	44.5
KY	2,710	2,740	2,798	2,857	2,924	201	15	53.4	47.5	48.6	27.5	42.3
TN	3,609	3,685	3,796	3,913	4,021	589	29	52.2	47.1	45.5	36.2	44.3
AL	2,950	2,995	3,080	3,138	3,218	744	20	54.8	47.7	52.0	35.5	45.6
MS	1,816	1,832	1,873	1,905	1,961	632	12	52.4	45.6	51.5	32.6	46.1
W.S.C.	18,901	19,257	19,852	20,477	21,038	2,883	3,892	51.8	45.1	42.7	28.3	36.8
AR	1,717	1,737	1,774	1,817	1,860	253	18	53.6	47.5	50.1	39.0	46.4
LA	3,006	2,988	3,045	3,100	3,137	902	75	58.8	56.9	322.4	(X)	15.1
OK	2,300	2,310	2,352	2,394	2,419	164	69	59.1	49.9	54.2	40.5	48.8
TX	11,878	12,222	12,681	13,166	13,622	1,564	3,730	48.5	41.2	44.3	31.3	38.3
West	37,468	38,993	40,194	41,771	42,452	2,216	8,450	53.5	47.0	51.0	38.8	45.1
Mountain	9,524	9,856	10,370	10,906	11,494	311	1,750	57.6	49.7	55.3	40.7	48.6
MT	574	579	600	623	647	2	9	68.4	62.9	67.3	56.5	62.4
ID	683	707	750	803	845	4	49	64.3	58.2	63.0	49.0	58.5
WY	321	319	329	343	352	3	20	61.0	60.1	59.9	57.2	59.7
CO	2,397	2,447	2,579	2,713	2,843	113	351	60.8	53.1	57.4	38.9	51.4
NM	1,047	1,075	1,121	1,167	1,210	22	505	50.8	46.0	49.6	39.6	45.3
AZ	2,610	2,696	2,812	2,923	3,094	85	602	52.9	45.4	50.1	37.6	43.8
UT	1,070	1,104	1,169	1,246	1,323	10	69	63.6	50.3	62.2	40.5	50.2
NV	824	929	1,011	1,088	1,180	72	145	50.1	39.3	48.7	34.6	38.1
Pacific	27,943	29,137	29,824	30,865	30,958	1,905	6,700	52.0	46.0	49.4	38.1	43.9
WA	3,465	3,650	3,812	4,000	4,122	111	193	60.0	54.7	58.3	42.2	52.7
OR	2,055	2,140	2,220	2,311	2,396	37	101	65.9	57.5	62.6	51.6	55.7
CA	21,250	22,124	22,521	23,225	23,133	1,716	6,323	49.4	43.3	46.8	35.9	41.0
AK	369	382	405	429	425	17	14	63.8	56.9	59.0	48.5	55.1
HI	804	841	866	900	882	24	69	43.1	40.8	41.4	39.3	40.0

NA Not available. X Not applicable. ¹ Persons of Hispanic origin may be of any race. ² State law does not require tabulation of votes for unopposed candidates. ³ See footnote 6, table 443.

Source: Compiled by U.S. Bureau of the Census. Population data from U.S. Bureau of the Census, *Current Population Reports*, P25-1117 and Statistical Brief (SB/96-2); votes cast from Elections Research Center, Chevy Chase, MD, *America Votes*, biennial, (copyright); and 1994, Congressional Quarterly Inc., *Congressional Quarterly Weekly Report*, vol. 53, No. 15, April 15, 1995, (copyright).

No. 466. Political Party Financial Activity, by Major Political Party: 1981 to 1994

[In millions of dollars. Covers financial activity during 2-year calendar period indicated. Some political party financial activities, such as building funds and State and local election spending, are not reported to the source. Also excludes contributions earmarked to Federal candidates through the party organizations, since some of those funds never passed through the committees' accounts]

YEAR AND TYPE OF COMMITTEE	DEMOCRATIC				REPUBLICAN			
	Receipts, net ¹	Disbursements, net ¹	Contributions to candidates	Monies spent on behalf of party's nominees ²	Receipts, net ¹	Disbursements, net ¹	Contributions to candidates	Monies spent on behalf of party's nominees ²
1981-82	39.3	40.1	1.7	3.3	215.0	214.0	5.6	14.3
1983-84	98.5	97.4	2.6	9.0	297.9	300.8	4.9	20.1
1985-86	64.8	65.9	1.7	9.0	255.2	258.9	3.4	14.3
1987-88	127.9	121.9	1.8	17.9	263.3	257.0	3.4	22.7
1989-90	85.8	90.9	1.5	8.7	206.3	213.5	2.9	10.7
1991-92, total	177.7	171.9	1.9	28.1	267.3	256.1	3.0	33.9
National committee	65.8	65.0	-	11.3	85.4	81.9	0.8	11.3
Senatorial committee	25.5	25.5	0.6	11.2	73.8	71.3	0.7	16.5
Congressional committee	12.8	12.7	0.8	4.1	35.3	34.3	0.7	5.2
Other national	9.8	8.6	-	-	-	-	-	-
State and local	63.9	60.2	0.5	1.4	72.8	68.6	0.8	0.9
1993-94, total	143.3	141.8	2.2	21.2	254.4	243.7	3.0	20.6
National committee	41.8	44.0	0.1	-0.3	87.4	85.3	0.5	4.7
Senatorial committee	26.4	26.4	0.5	12.3	65.3	65.4	0.6	10.9
Congressional committee	19.4	19.4	1.0	7.7	26.7	26.3	0.8	3.9
Other national	7.8	8.1	-	-	-	-	-	-
State and local	47.8	44.0	0.6	1.5	75.0	66.7	1.0	1.1

- Represents zero. ¹ Excludes monies transferred between affiliated committees. ² Monies spent in the general election. Minus sign (-) indicates refunds for expenditures.

Source: U.S. Federal Election Commission, *FEC Reports on Financial Activity, Final Report, Party and Non-Party Political Committees*, biennial.

No. 467. Independent Expenditures for Presidential and Congressional Campaigns: 1985 to 1994

[In thousands of dollars. Covers campaign finance activity during 2-year calendar period indicated. An "independent expenditure" is money spent to support or defeat a clearly identified candidate. According to Federal election law, such an expenditure must be made without cooperation or consultation with the candidate or his/her campaign. Independent expenditures are not limited, as are contributions]

TYPE OF OFFICE AND YEAR	ALL PARTIES			DEMOCRATS		REPUBLICANS		OTHERS	
	Total	For	Against	For	Against	For	Against	For	Against
TOTAL									
1985-86	10,205	8,832	1,373	3,450	888	5,376	485	6	-
1987-88	21,341	16,654	4,687	2,865	4,248	13,784	439	6	-
1989-90	5,774	4,177	1,597	1,530	735	2,645	862	2	-
1991-92	11,052	8,710	2,342	3,044	1,483	5,548	847	118	12
1993-94	4,980	3,256	1,724	672	1,119	2,571	590	13	15
PRESIDENTIAL									
1985-86	841	795	45	76	28	719	17	-	-
1987-88	14,127	10,628	3,499	568	3,352	10,054	146	6	-
1989-90	497	322	174	5	169	318	5	-	-
1991-92	4,431	3,695	736	583	561	3,052	163	60	12
1993-94	112	27	85	12	84	15	(Z)	-	1
SENATE									
1985-86	5,312	4,331	980	988	632	3,343	348	-	-
1987-88	4,401	3,641	761	831	617	2,810	143	(Z)	-
1989-90	3,506	2,362	1,144	756	428	1,604	716	2	-
1991-92	2,604	1,912	692	1,025	462	886	230	1	-
1993-94	2,627	1,612	1,015	261	476	1,351	539	(Z)	-
HOUSE OF REPRESENTATIVES									
1985-86	4,053	3,706	347	2,386	227	1,314	120	6	-
1987-88	2,813	2,385	427	1,466	279	920	149	(Z)	-
1989-90	1,772	1,493	279	770	138	723	141	-	-
1991-92	4,017	3,103	914	1,436	460	1,610	454	57	-
1993-94	2,241	1,617	624	399	559	1,205	51	13	14

- Represents zero. Z Less than \$500.

Source: U.S. Federal Election Commission, *FEC Index of Independent Expenditures, 1987-88*, May 1989; press release of May 19, 1989; and unpublished data.

No. 468. Political Action Committees—Number, by Committee Type: 1980 to 1995

[As of December 31]

COMMITTEE TYPE	1980	1985	1990	1991	1992	1993	1994	1995
Total	2,551	3,992	4,172	4,094	4,195	4,210	3,954	4,016
Corporate	1,206	1,710	1,795	1,738	1,735	1,789	1,660	1,674
Labor	297	388	346	338	347	337	333	334
Trade/membership/health	576	695	774	742	770	761	792	815
Nonconnected	374	1,003	1,062	1,083	1,145	1,121	980	1,020
Cooperative	42	54	59	57	56	56	53	44
Corporation without stock	56	142	136	136	142	146	136	129

Source: U.S. Federal Election Commission, press release of January 23, 1996.

No. 469. Political Action Committees—Financial Activity Summary, by Committee Type: 1989 to 1994

[In millions of dollars. Covers financial activity during 2-year calendar period indicated. Data have not been adjusted for transfers between affiliated committees]

COMMITTEE TYPE	RECEIPTS			DISBURSEMENTS ¹			CONTRIBUTIONS TO CANDIDATES		
	1989-90	1991-92	1993-94	1989-90	1991-92	1993-94	1989-90	1991-92	1993-94
Total	372.1	385.5	391.8	357.6	394.8	388.1	159.1	188.9	189.6
Corporate	106.5	112.5	115.0	101.1	112.4	116.8	58.1	68.4	69.6
Labor	88.9	89.9	90.3	84.6	94.6	88.4	34.7	41.4	41.9
Trade/membership/health	92.5	95.7	96.4	88.1	97.5	94.1	44.8	53.9	52.9
Nonconnected	71.6	73.8	76.9	71.4	76.2	75.1	15.1	18.3	18.2
Cooperative	5.0	4.8	4.4	4.8	4.9	4.5	2.9	3.0	3.0
Corporation without stock	7.6	8.7	8.9	7.7	9.2	9.2	3.4	4.0	4.1

¹ Comprises contributions to candidates, independent expenditures, and other disbursements.Source: U.S. Federal Election Commission, *FEC Reports on Financial Activity, Final Report, Party and Non-Party Political Committees*, biennial.**No. 470. Presidential Campaign Finances—Federal Funds for General Election: 1980 to 1992**

[In millions of dollars. Based on FEC certifications, audit reports, and Dept. of Treasury reports]

1980		1984		1988		1992	
Candidate	Amount	Candidate	Amount	Candidate	Amount	Candidate	Amount
Total	62.7	Total	80.3	Total	92.2	Total	110.4
Anderson ¹	4.2	Mondale	40.2	Bush	46.1	Bush	55.2
Carter	29.4	Reagan	40.1	Dukakis	46.1	Clinton	55.2
Reagan	29.2					Perot	-

- Represents zero. ¹ John Anderson, as the candidate of a new party, was permitted to raise funds privately. Total receipts for the Anderson campaign, including Federal funds, were \$17.6 million, and total expenditures were \$15.6 million.

Source: U.S. Federal Election Commission, periodic press releases.

No. 471. Presidential Campaign Finances—Primary Campaign Receipts and Disbursements: 1983 to 1992

[In millions of dollars. Covers campaign finance activity during 2-year calendar period indicated. Covers candidates who received Federal matching funds or who had significant financial activity]

ITEM	TOTAL			DEMOCRATIC			REPUBLICAN		
	1983-84 ¹	1987-88 ²	1991-92 ³	1983-84	1987-88	1991-92	1983-84	1987-88	1991-92
Receipts, total ⁴	105.0	213.8	125.2	77.5	91.9	70.0	27.1	116.0	49.7
Individual contributions	62.8	141.1	82.4	46.2	59.4	44.7	16.4	76.8	34.4
Federal matching funds	34.9	65.7	41.5	24.6	30.1	24.4	10.1	34.7	15.0
Disbursements	103.6	210.7	118.7	77.4	90.2	64.4	25.9	114.6	48.8

¹ Includes Citizens Party candidate, not shown separately. ² Includes a minor party candidate who sought several party nominations and a Democratic candidate who did not receive Federal matching funds, but who had significant financial activity. ³ Includes other parties, not shown separately. ⁴ Includes other types of receipts, not shown separately.Source: U.S. Federal Election Commission, *FEC Reports on Financial Activity, Final Report, Presidential Pre-Nomination Campaigns*, quadrennial.

No. 472. Congressional Campaign Finances—Receipts and Disbursements: 1989 to 1994

[Covers all campaign finance activity during 2-year calendar period indicated for primary, general, run-off, and special elections, for 1989-90 to 1,580 House of Representatives candidates and 179 Senate candidates; for 1991-92 to 2,585 House of Representatives candidates and 365 Senate candidates, for 1993-94 to 2,045 House of Representatives candidates and 331 Senate candidates; Data have been adjusted to eliminate transfers between all committees within a campaign. For further information on legal limits of contributions, see Federal Election Campaign Act of 1971, as amended]

ITEM	HOUSE OF REPRESENTATIVES						SENATE					
	Amount (mil. dol.)			Percent distribution			Amount (mil. dol.)			Percent distribution		
	1989-90	1991-92	1993-94	1989-90	1991-92	1993-94	1989-90	1991-92	1993-94	1989-90	1991-92	1993-94
Total receipts ¹	285.4	395.9	421.3	100	100	100	186.3	263.4	319.1	100	100	100
Individual contributions	129.9	192.4	216.1	46	49	51	119.6	162.8	186.4	64	62	58
Other committees	108.5	127.4	132.4	38	32	31	41.2	51.2	47.2	22	19	15
Candidate loans	20.9	43.0	43.9	7	11	10	10.0	28.7	43.5	5	11	14
Candidate contributions	4.8	11.4	10.3	2	3	2	2.4	6.5	24.9	1	2	8
Democrats	163.4	217.7	216.7	57	55	51	89.5	143.8	133.6	48	55	42
Republicans	120.9	174.3	201.8	42	44	48	96.8	118.3	183.6	52	45	58
Others	1.1	3.9	2.8	(Z)	1	1	(Z)	1.3	2.0	(Z)	(Z)	1
Incumbents	181.9	203.5	224.1	64	51	53	118.7	99.7	113.3	64	38	36
Challengers	47.7	91.3	100.6	17	23	24	54.8	95.6	119.2	29	36	37
Open seats ²	55.9	101.1	96.6	20	26	23	12.8	68.2	86.6	7	26	27
Total disbursements	265.8	407.6	407.2	100	100	100	180.4	272.1	318.8	100	100	100
Democrats	151.0	228.3	213.4	57	56	52	87.6	147.6	136.3	49	54	43
Republicans	113.7	176.0	191.0	43	43	47	92.9	123.2	180.6	52	45	57
Others	1.1	3.3	2.8	(Z)	1	1	(Z)	1.2	2.0	(Z)	(Z)	1
Incumbents	163.4	217.9	213.5	62	53	52	113.5	107.2	115.1	63	39	36
Challengers	47.0	90.0	99.1	18	22	24	54.9	95.3	118.3	30	35	37
Open seats ²	55.4	99.7	94.6	21	24	23	12.1	69.6	85.5	7	26	27

¹ Z Less than \$50,000 or 0.5 percent. ² Elections in which an incumbent did not seek re-election. ³ Includes other types of receipts, not shown separately. ⁴ Elections in which an incumbent did not seek re-election.

Source: U.S. Federal Election Commission, *FEC Reports on Financial Activity, Final Report, U.S. Senate and House Campaigns*, biennial.

No. 473. Contributions to Congressional Campaigns by Political Action Committees (PAC), by Type of Committee: 1981 to 1994

[In millions of dollars. Covers amounts given to candidates in primary, general, run-off, and special elections during the 2-year calendar period indicated. For number of political action committees, see table 468]

TYPE OF COMMITTEE	Total ¹	Democrats	Republicans	Incumbents	Challengers	Open seats ²
HOUSE OF REPRESENTATIVES						
1981-82	61.1	34.2	26.8	40.8	10.9	9.4
1983-84	75.7	46.3	29.3	57.2	11.3	7.2
1985-86	87.4	54.7	32.6	65.9	9.1	12.4
1987-88	102.2	67.4	34.7	82.2	10.0	10.0
1989-90	108.5	72.2	36.2	87.5	7.3	13.6
1991-92	127.4	85.4	41.7	94.4	12.2	20.8
1993-94, total ³	132.4	88.2	43.9	101.4	12.7	18.3
Corporate	43.5	23.6	19.9	36.3	2.9	4.3
Trade association ⁴	38.8	22.1	16.6	30.0	3.3	5.5
Labor	33.4	31.9	1.4	23.6	4.1	5.6
Nonconnected ⁵	11.8	7.4	4.4	7.4	2.0	2.4
SENATE						
1981-82	22.6	11.2	11.4	14.3	5.2	3.0
1983-84	29.7	14.0	15.6	17.9	6.3	5.4
1985-86	45.3	20.2	25.1	23.7	10.2	11.4
1987-88	45.7	24.2	21.5	28.7	8.0	9.0
1989-90	41.2	20.2	21.0	29.5	8.2	3.5
1991-92	51.2	29.0	22.2	31.9	9.4	10.0
1993-94, total ³	47.2	24.0	23.2	26.3	5.7	15.1
Corporate	20.8	7.8	13.0	11.7	2.0	7.2
Trade association ⁴	11.5	4.9	6.6	6.8	1.1	3.6
Labor	7.3	7.1	0.2	3.6	1.7	2.0
Nonconnected ⁵	5.7	3.1	2.6	3.1	0.8	1.8

¹ Includes other parties, not shown separately. ² Elections in which an incumbent did not seek re-election. ³ Includes other types of political action committees not shown separately. ⁴ Includes membership organizations and health organizations. ⁵ Represents "ideological" groups as well as other issue groups not necessarily ideological in nature.

Source: U.S. Federal Election Commission, *FEC Reports on Financial Activity, Party and Non-Party Political Committees, Final Report*, biennial.