

# Foreclosures in Rhode Island and New England

Analysis of Mortgage Bankers Association  
National Delinquency Survey  
Data through Q1-10

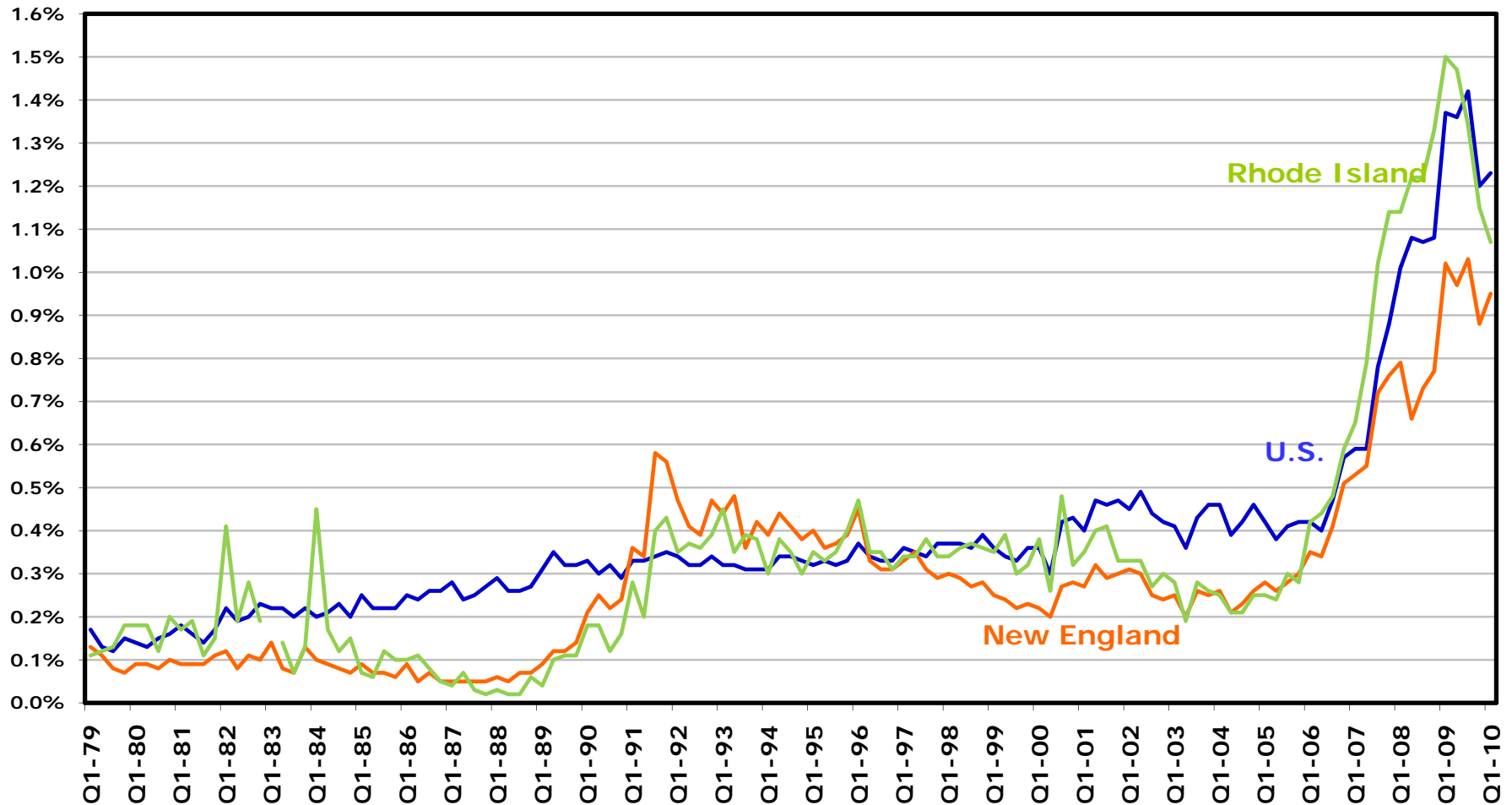
Version: July 7, 2010



Prepared by Kai-yan Lee [kai-yan.lee@bos.frb.org]

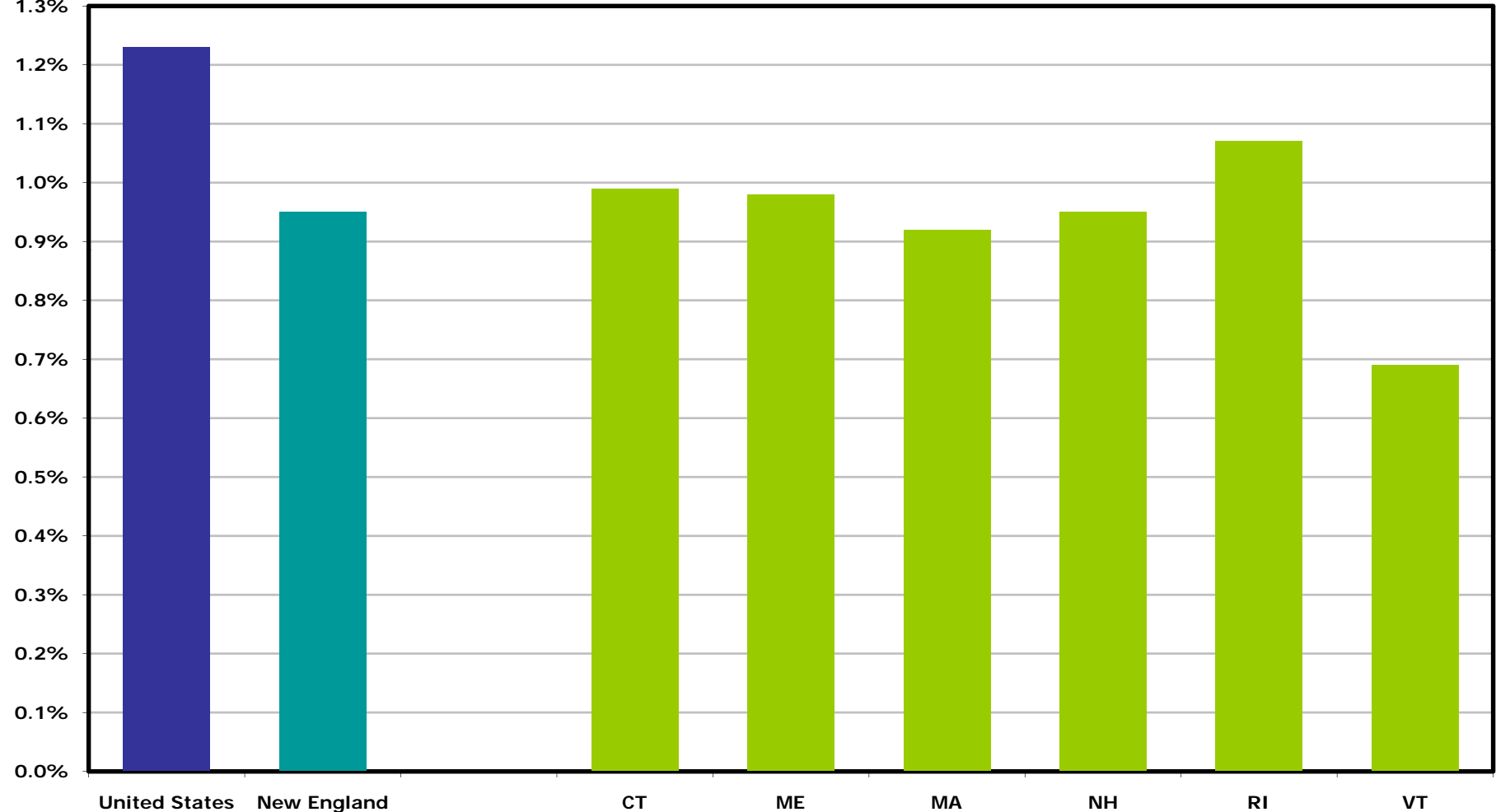
# Foreclosure rates for United States, New England, and Rhode Island, through Q1-10

Percent of loans with foreclosure initiation in quarter\*



# Foreclosure rates for United States and New England states, Q1-10

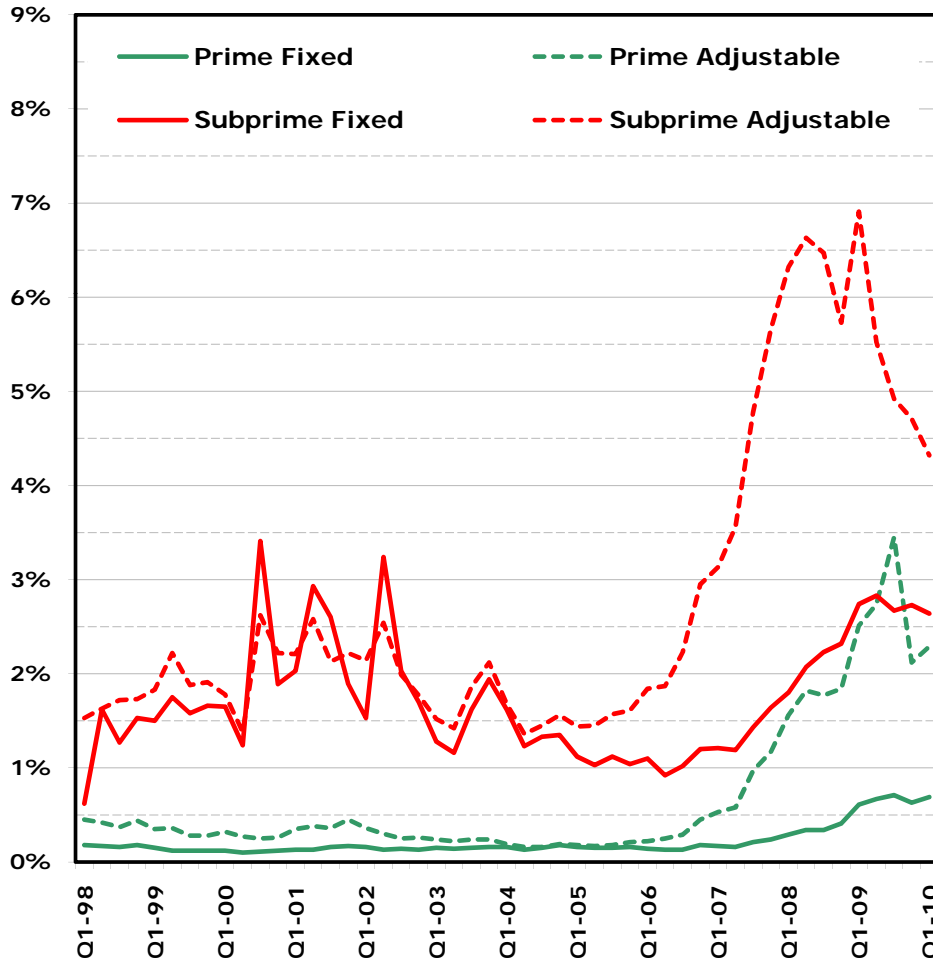
Percent of loans with foreclosure initiation in quarter



# Foreclosure rates for United States and Rhode Island, major conventional loan categories, through Q1-10

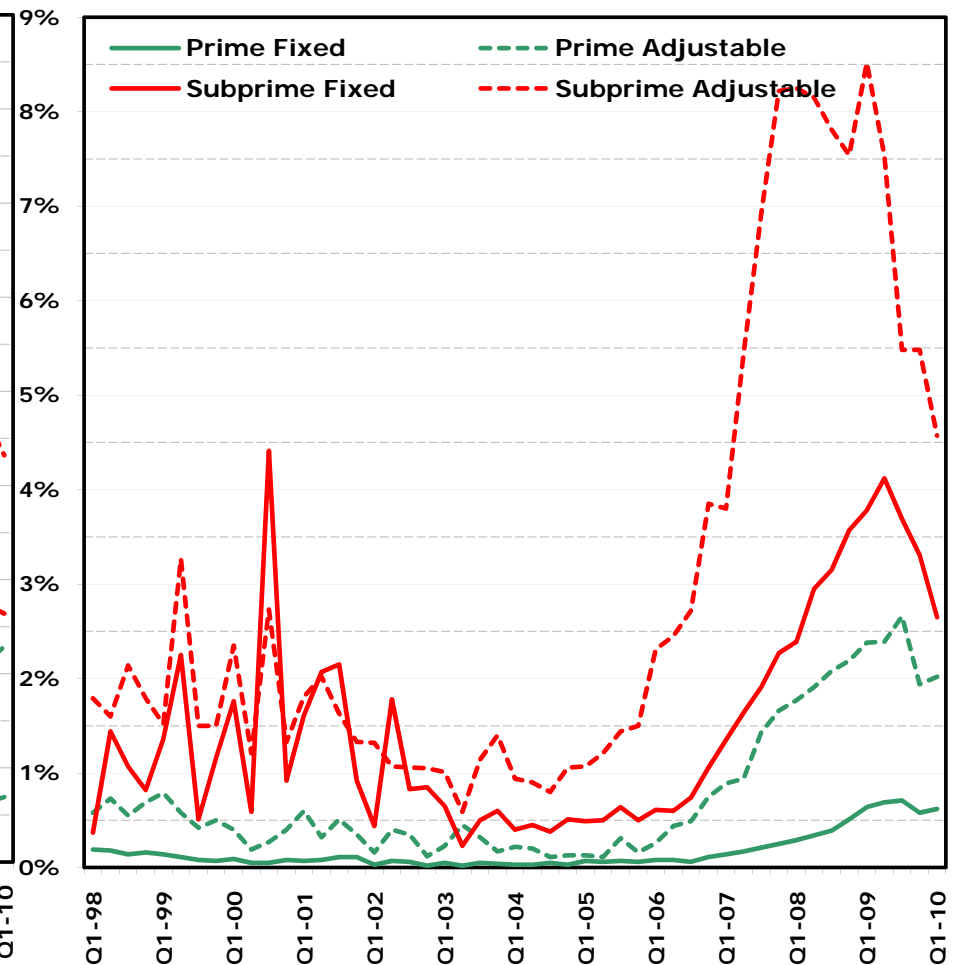
## United States

Percent of loans with foreclosure initiation in quarter



## Rhode Island

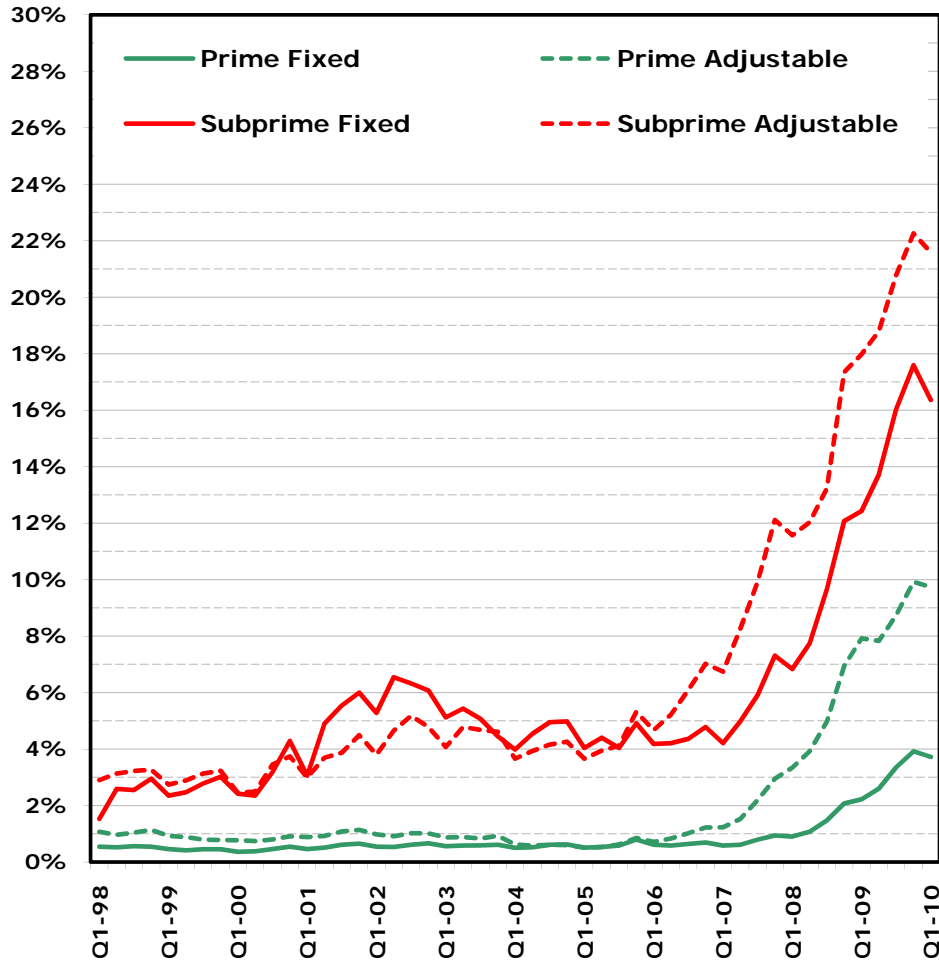
Percent of loans with foreclosure initiation in quarter



# 60-day+ delinquency rates for United States and Rhode Island, major conventional loan categories, through Q1-10

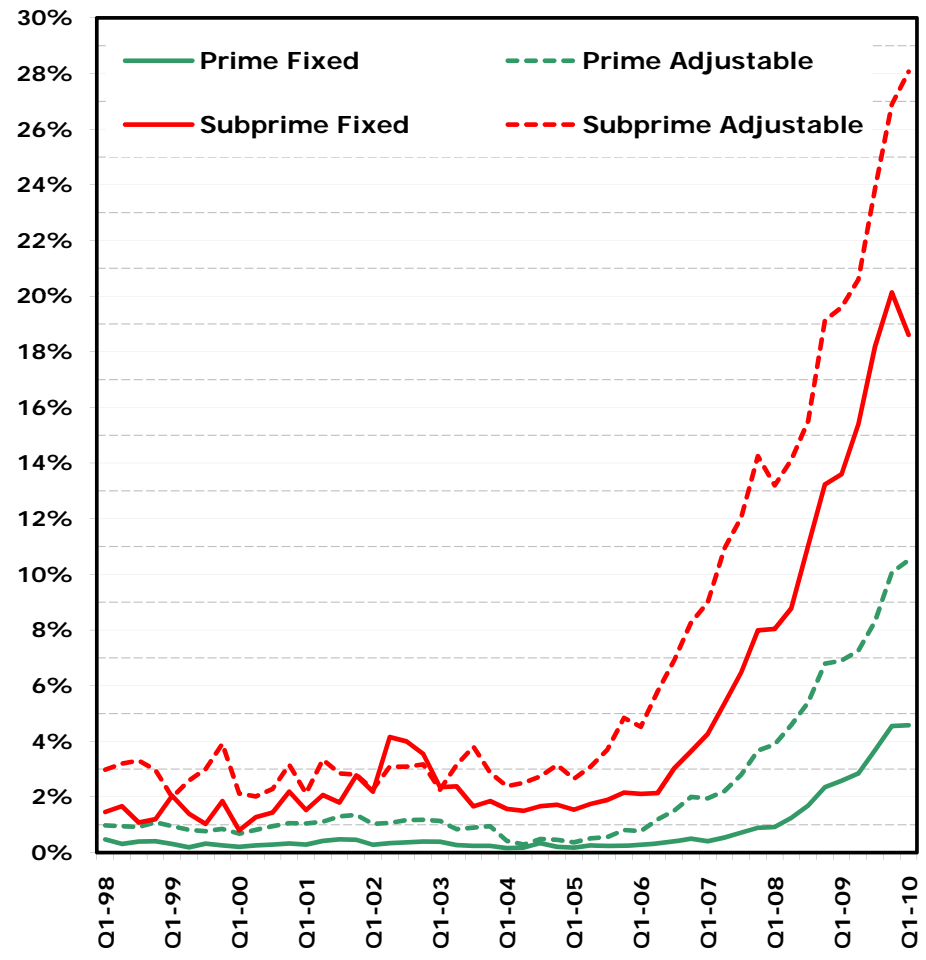
## United States

Percent of loans with 60-day+ delinquency in quarter



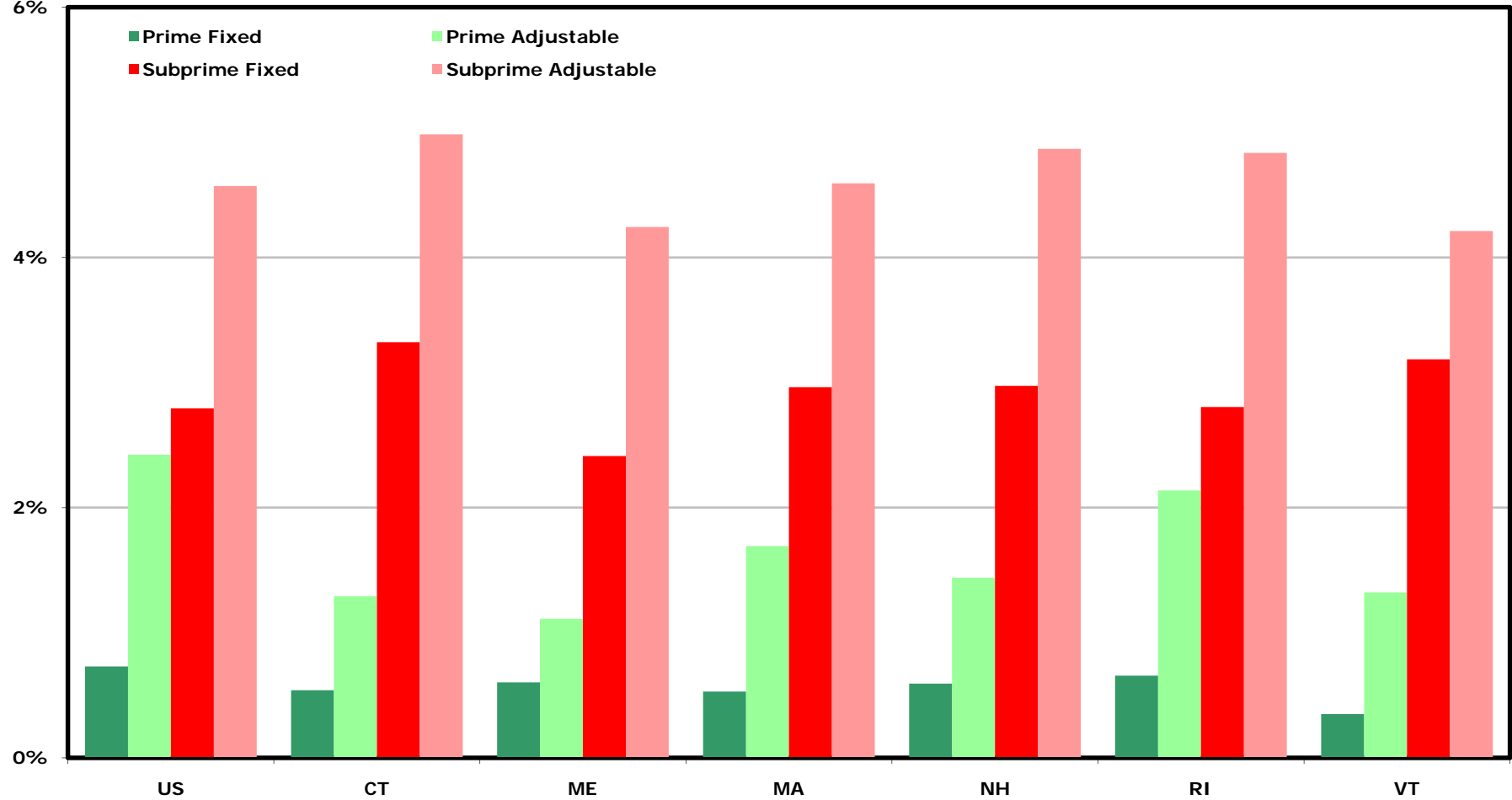
## Rhode Island

Percent of loans with 60-day+ delinquency in quarter



# Foreclosure rates for U.S. and New England states, major conventional loan categories, Q1-10

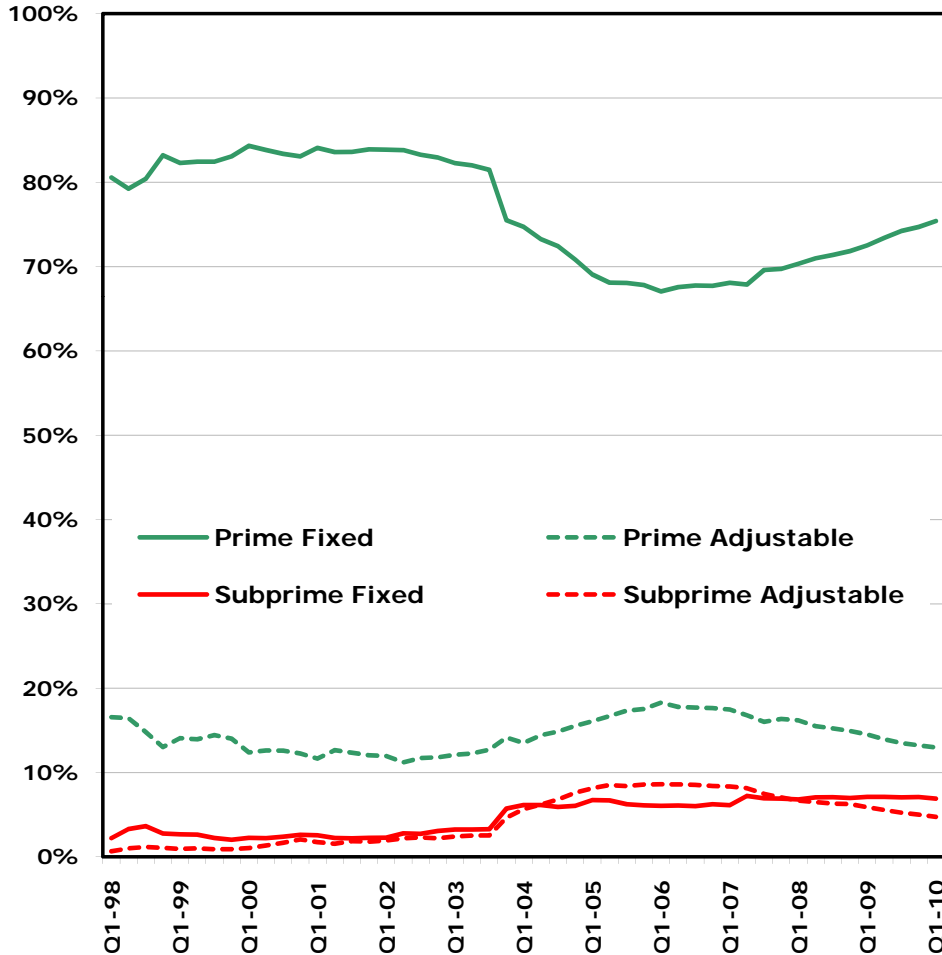
Percent of loans with foreclosure initiation in quarter



# Market share for United States and Rhode Island, major conventional loan categories, through Q1-10

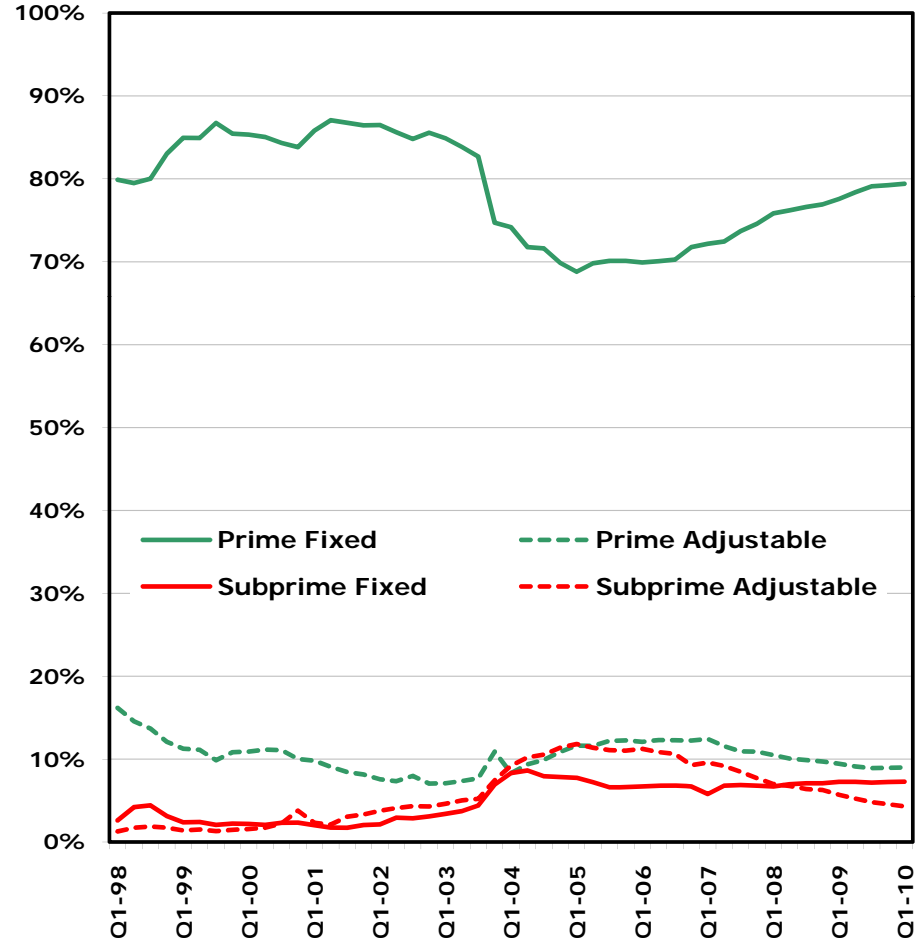
## United States

Market share (quarterly values sum to 100%)



## Rhode Island

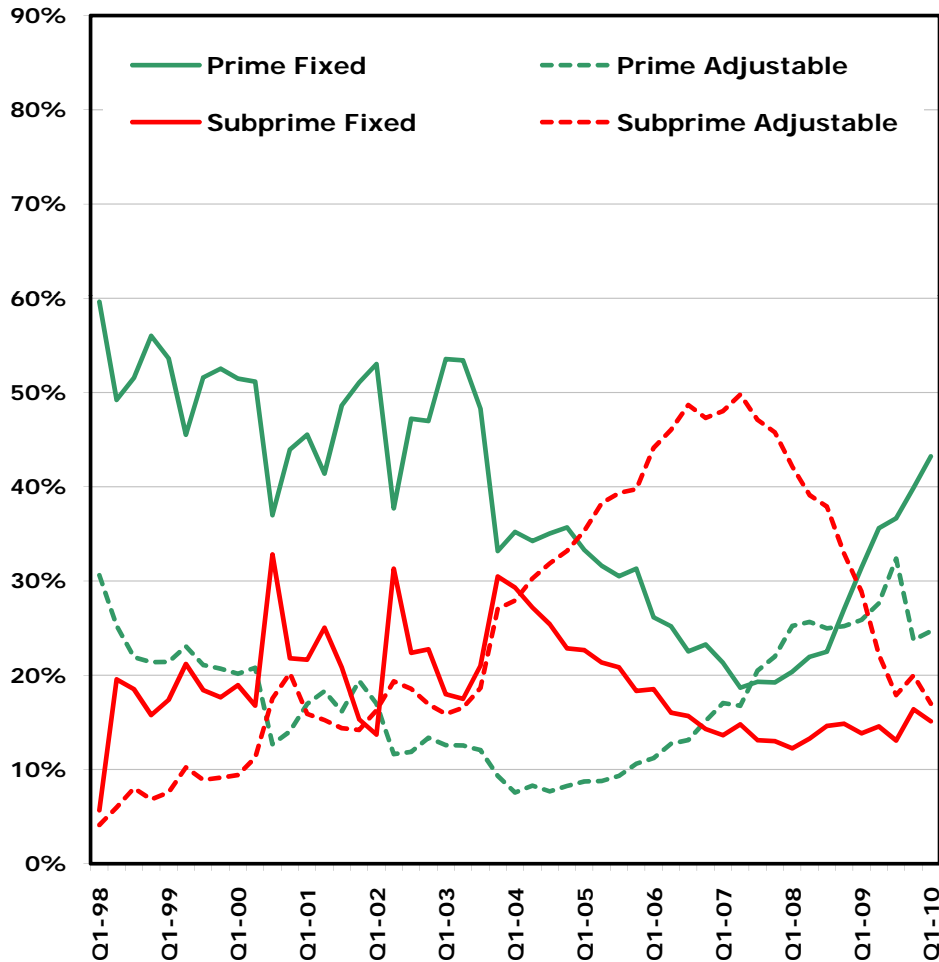
Market share (quarterly values sum to 100%)



# Product foreclosure share for U.S. and Rhode Island, major conventional loan categories, through Q1-10

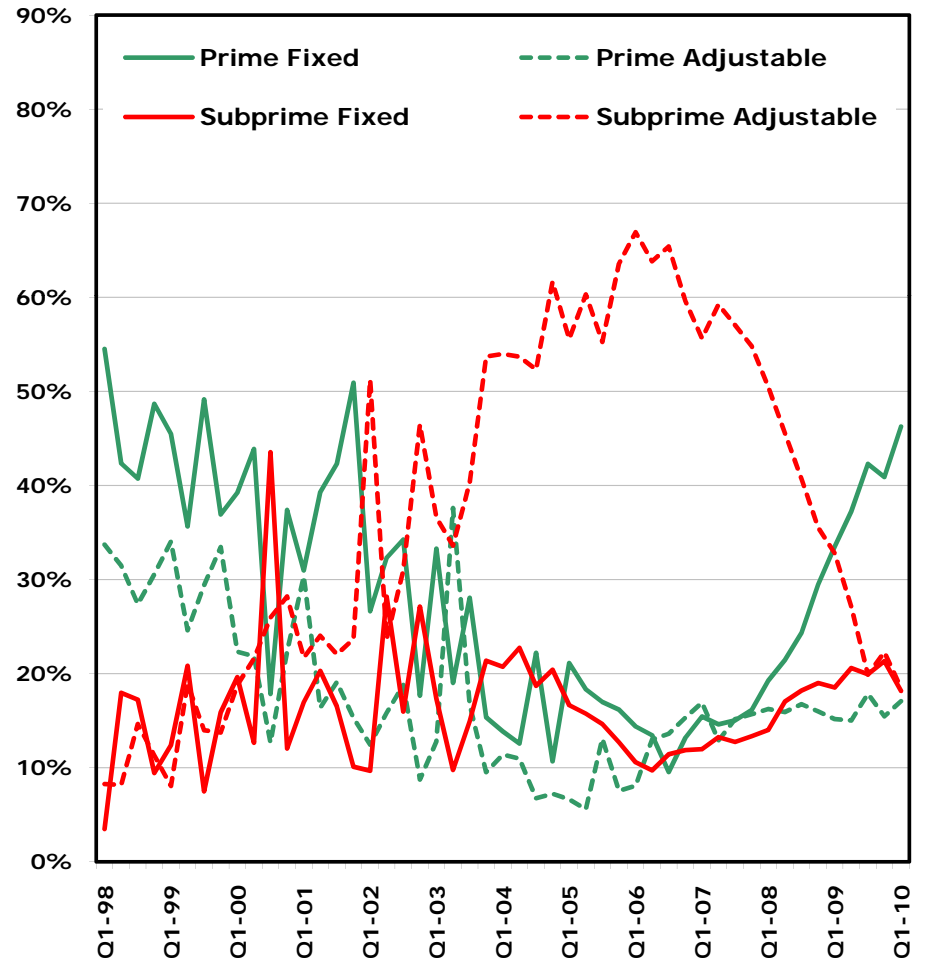
## United States

Foreclosure share (quarterly values sum to 100%)



## Rhode Island

Foreclosure share (quarterly values sum to 100%)

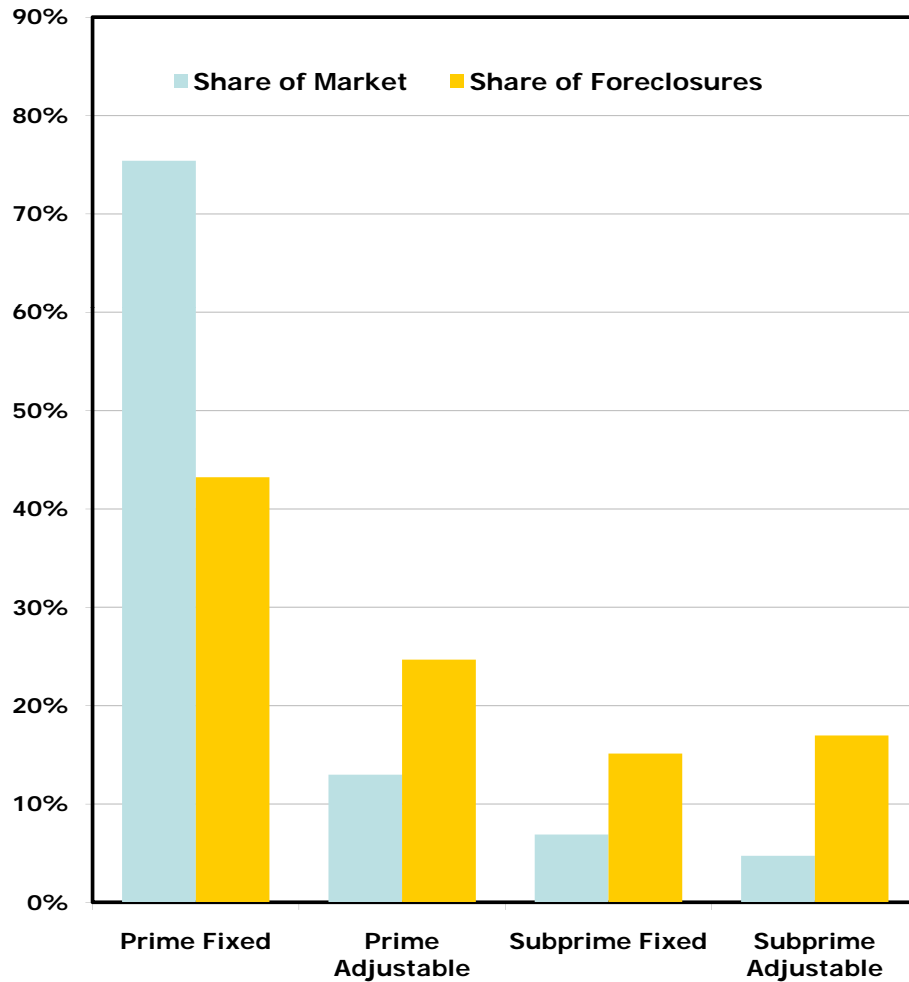




# Market and foreclosure share for United States and Rhode Island, major conventional loan categories, Q1-10

## United States

Market and foreclosure share



## Rhode Island

Market and foreclosure share

