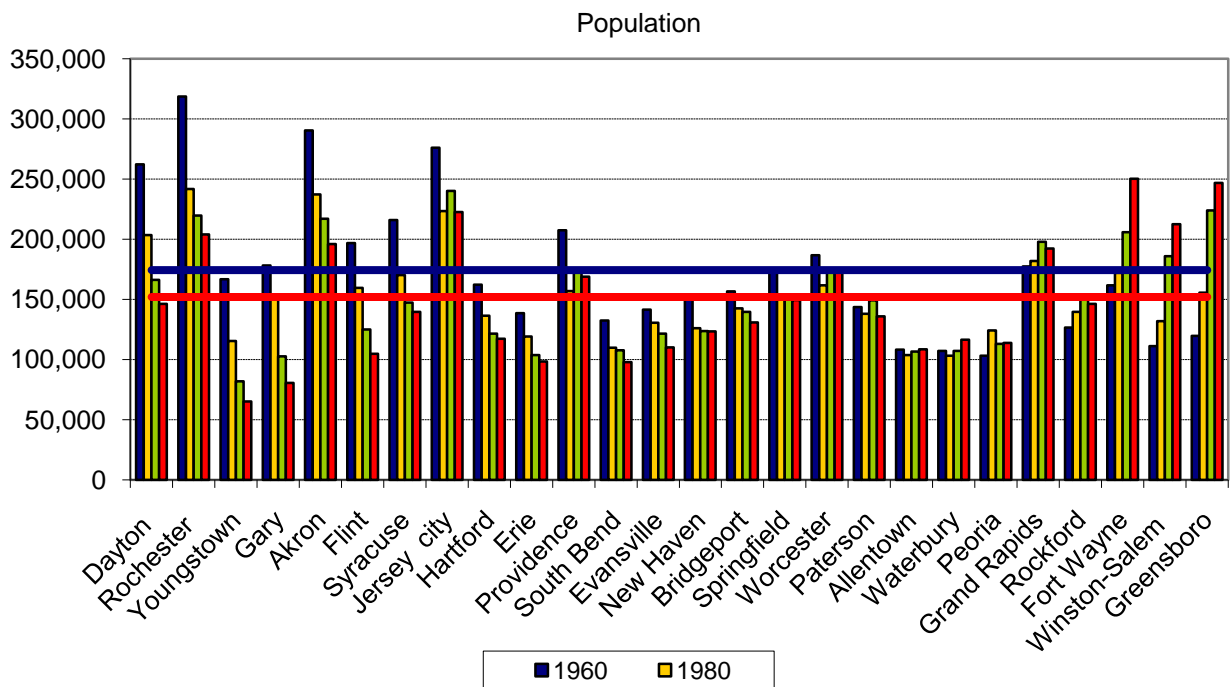
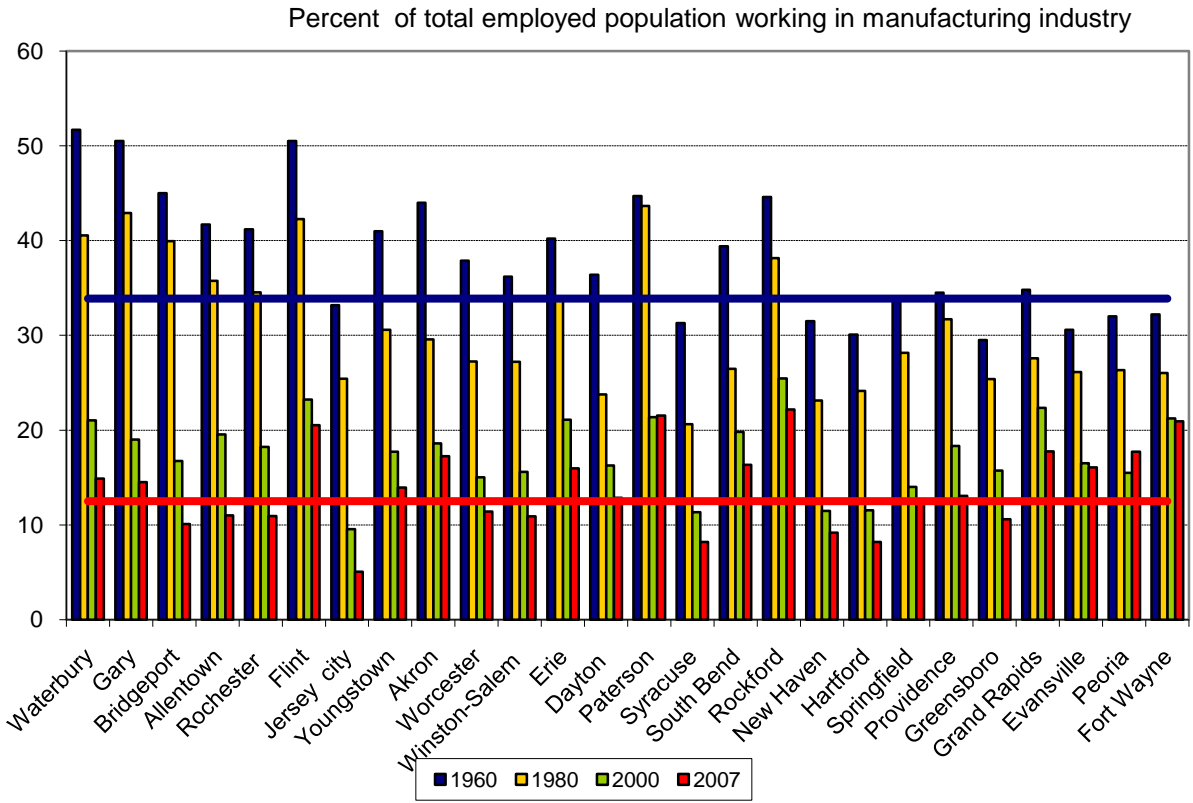
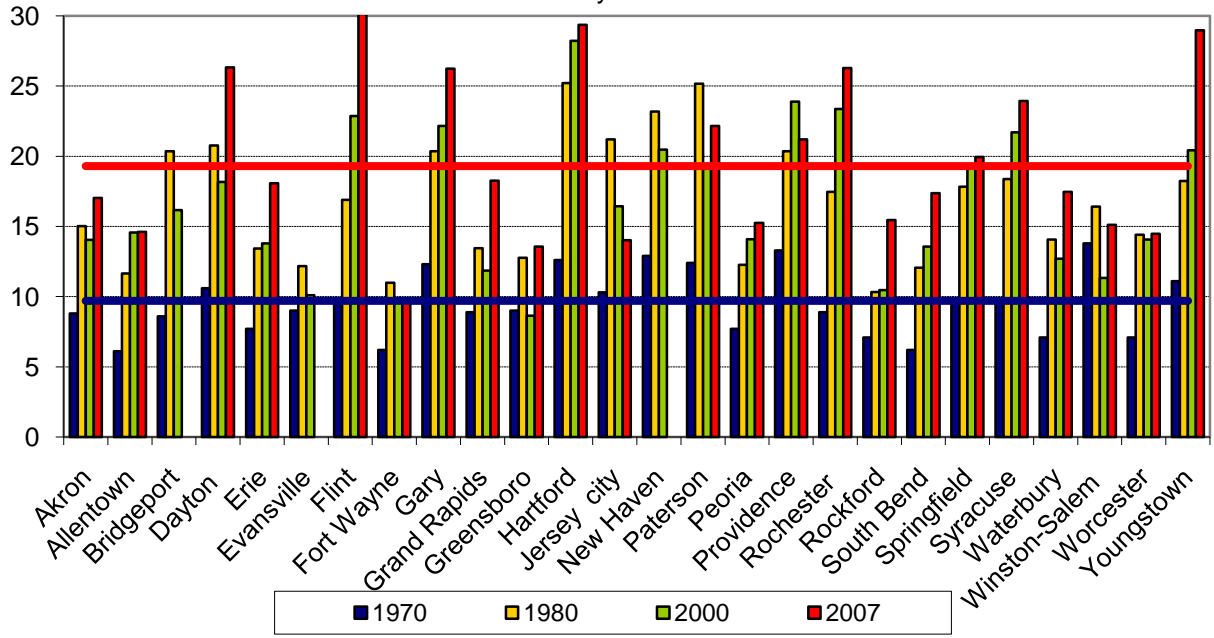


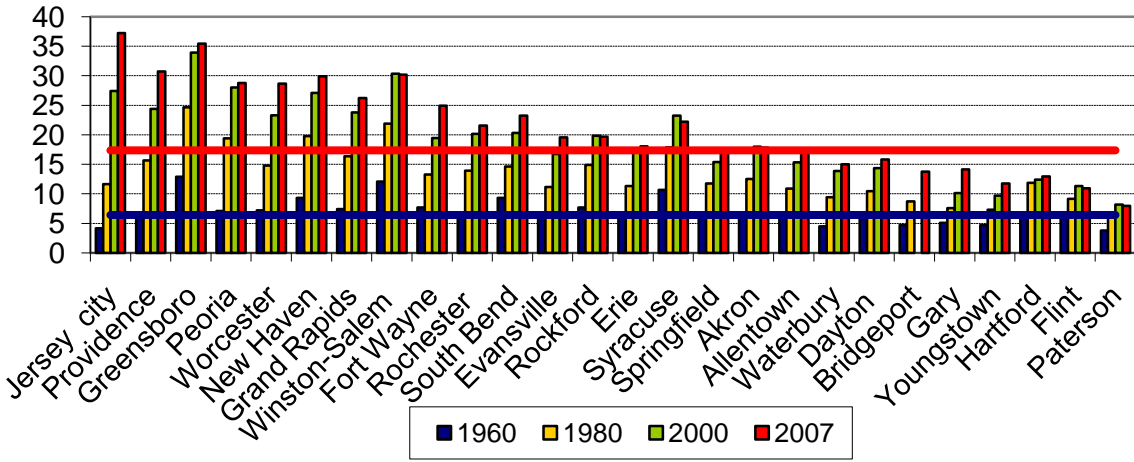
Selected Demographic and Economic Characteristics of Springfield, MA and other mid-size Cities, 1960–2007



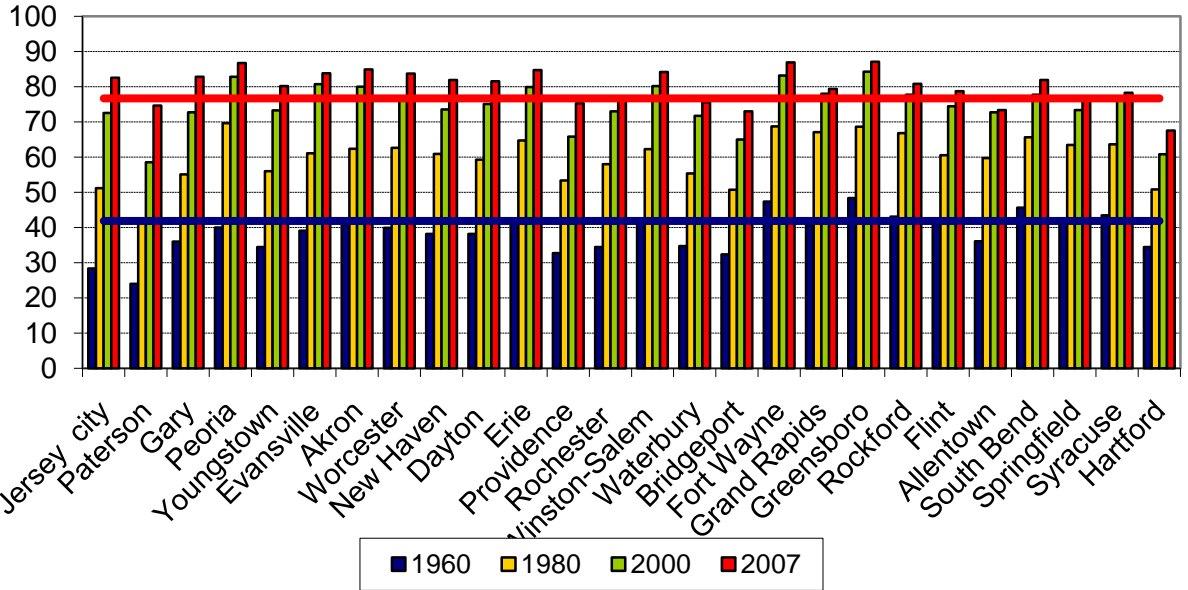
Poverty rates

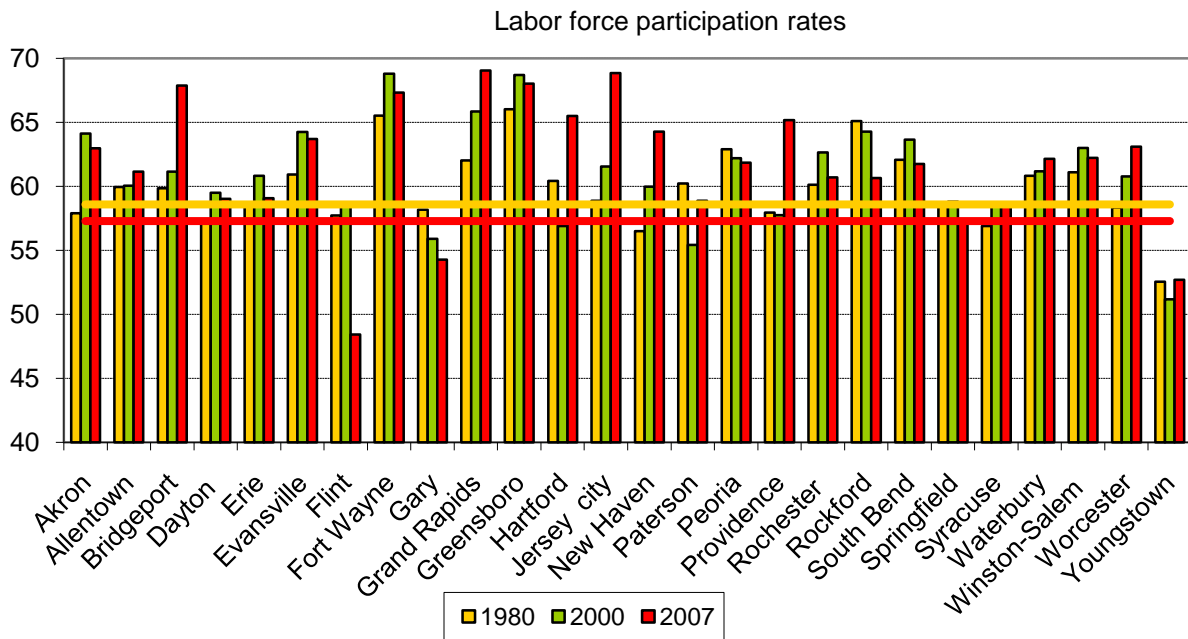


Percent of population 25 years and older with bachelor's degree or higher



Percent of population 25 years and older with high school degree or higher





Source: U.S Census Bureau, Decennial Census (1960, 1980, 2000), American Community Survey (2007)

Toward a More Prosperous Springfield: A Federal Reserve Bank of Boston Initiative,

<http://www.bos.frb.org/commdev/springfield>