

Foreclosures in Vermont and New England

Analysis of Mortgage Bankers Association
National Delinquency Survey
Data through Q1-10

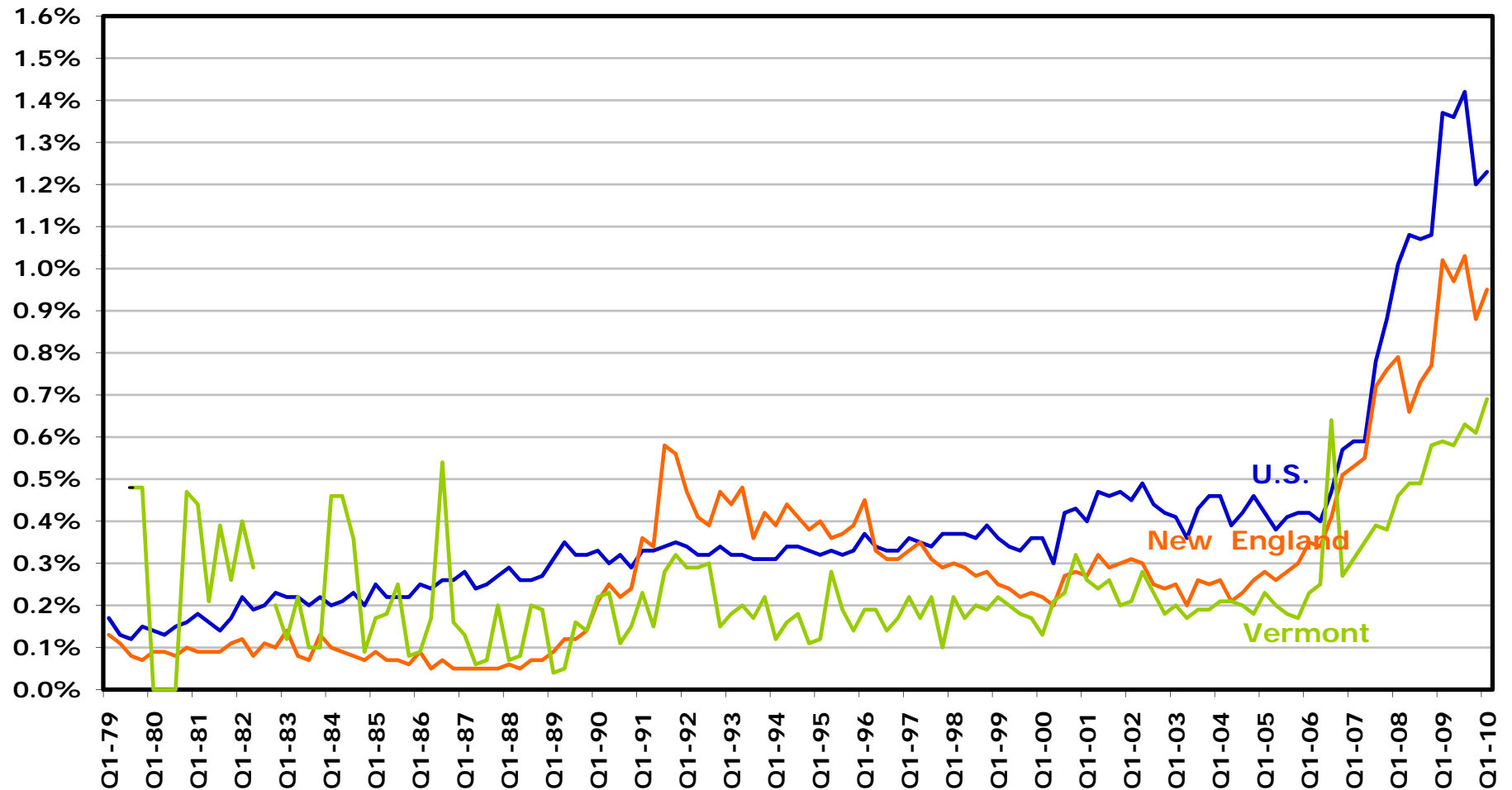
Version: July 7, 2010



Prepared by Kai-yan Lee [kai-yan.lee@bos.frb.org]

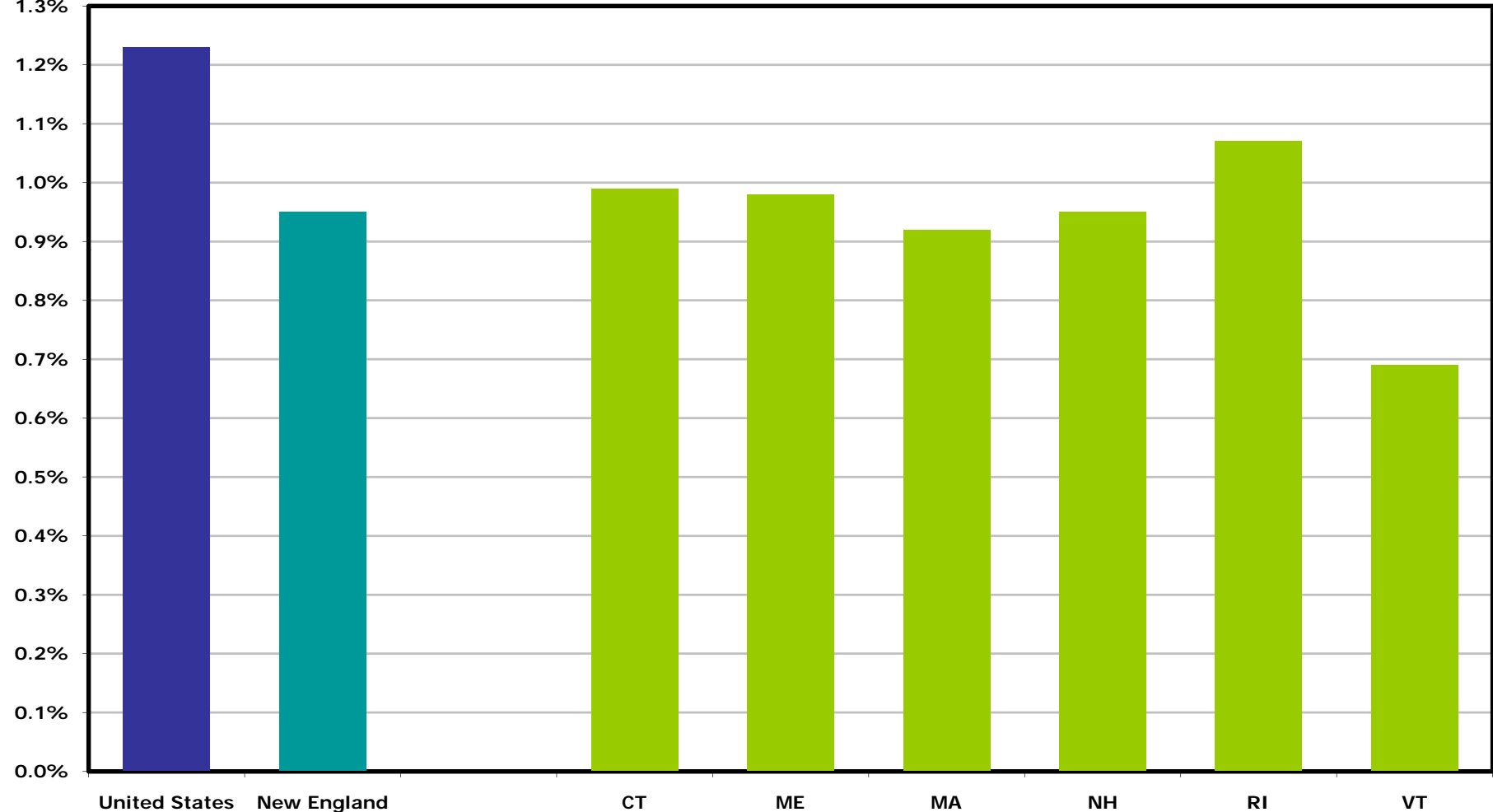
Foreclosure rates for United States, New England, and Vermont, through Q1-10

Percent of loans with foreclosure initiation in quarter*



Foreclosure rates for United States and New England states, Q1-10

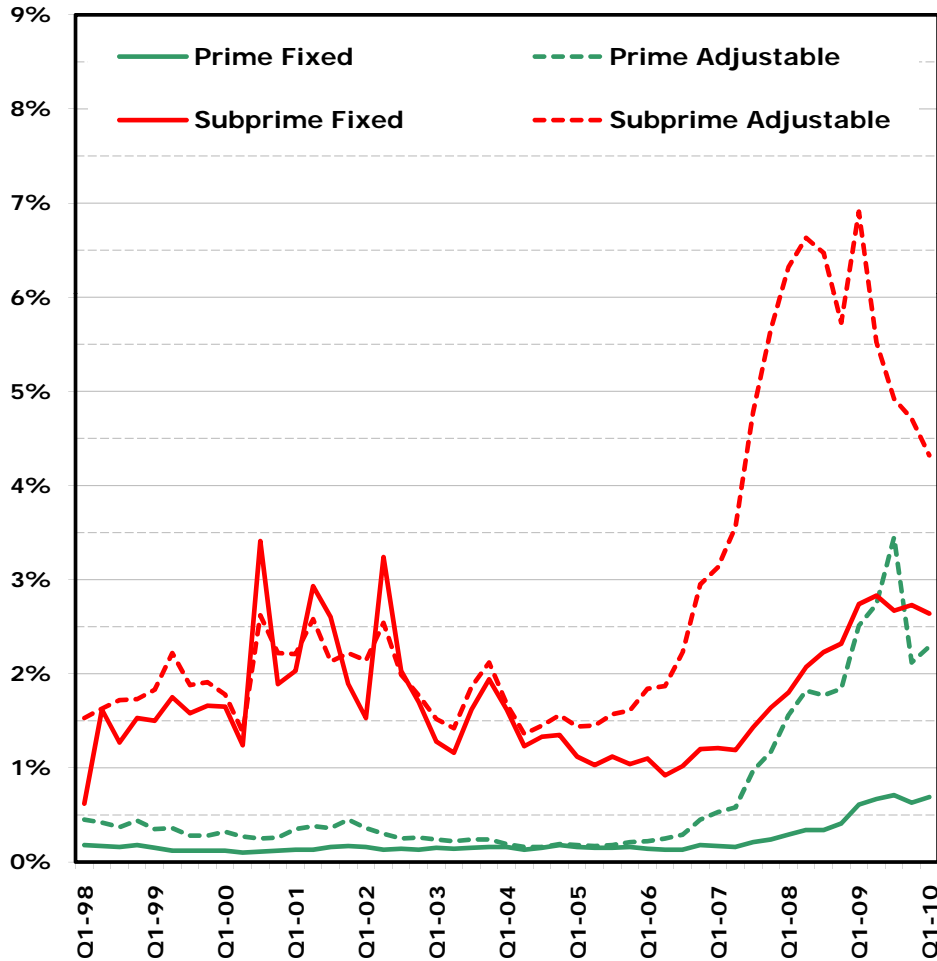
Percent of loans with foreclosure initiation in quarter



Foreclosure rates for U.S. and Vermont, by major categories of conventional loans, through Q1-10

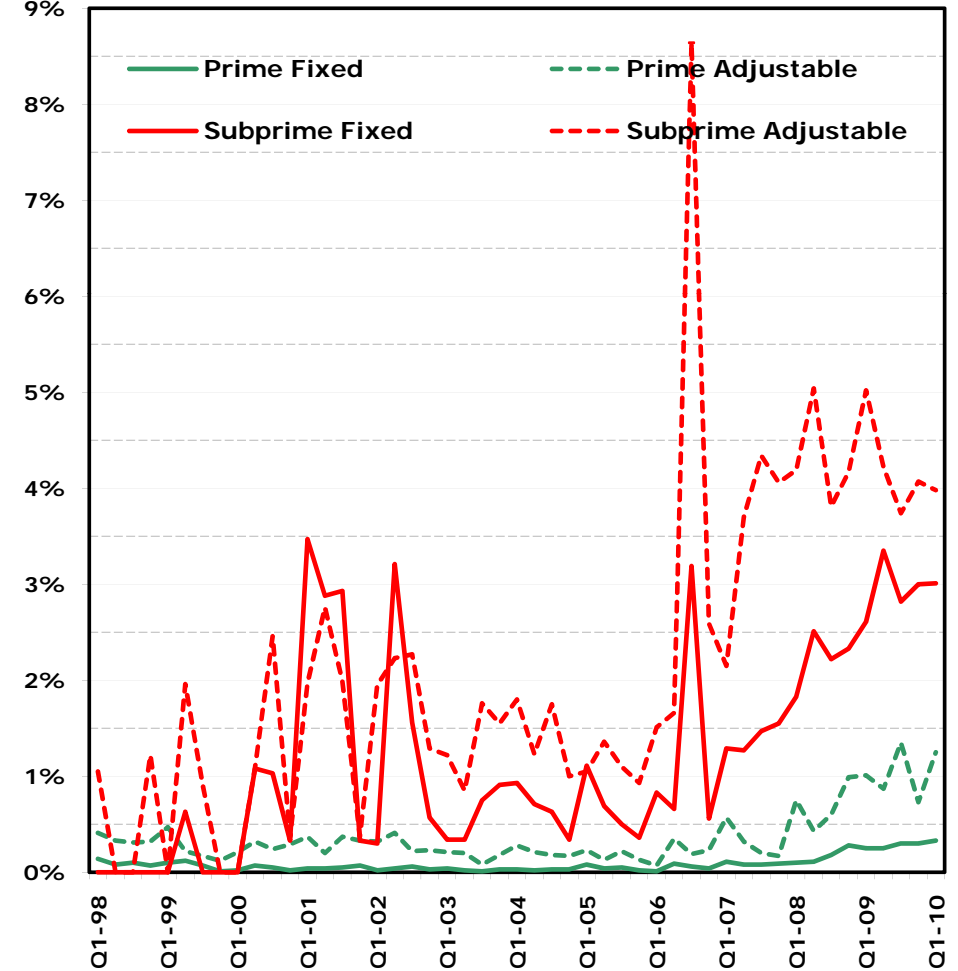
United States

Percent of loans with foreclosure initiation in quarter



Vermont

Percent of loans with foreclosure initiation in quarter*



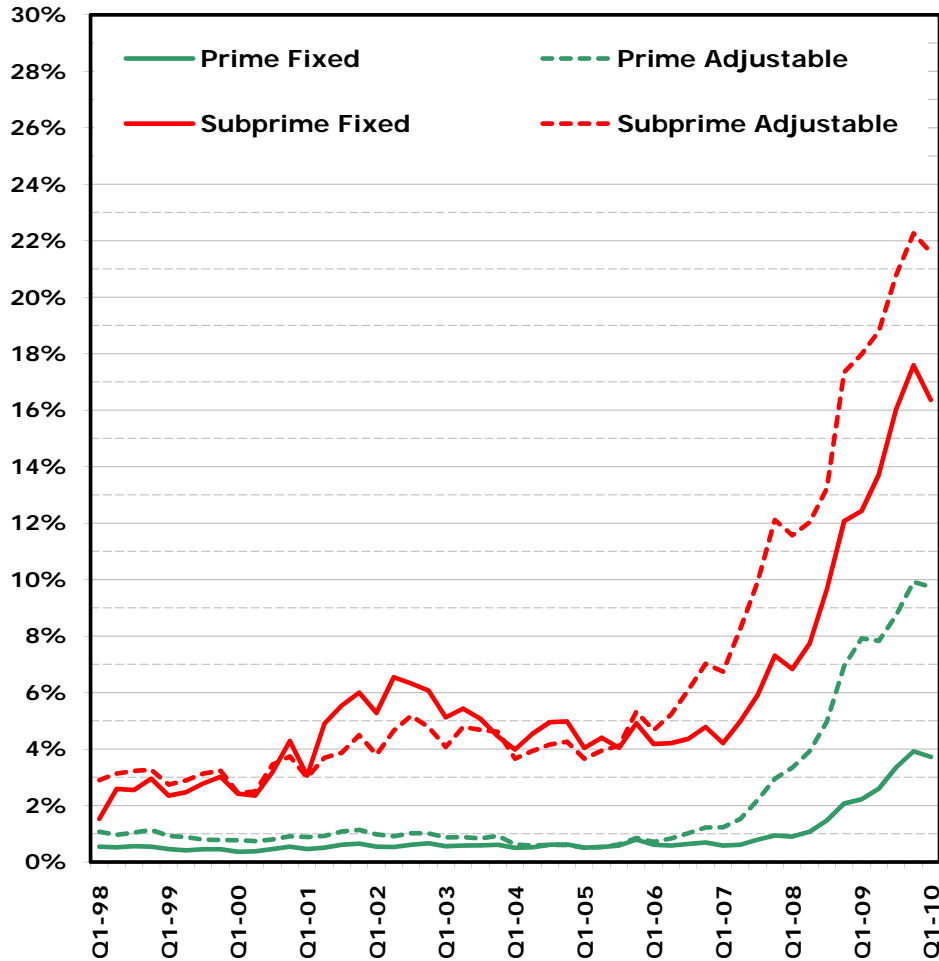
*Extreme outlier (VT subprime adjustable Q3-06) omitted

Source: Mortgage Bankers Association/Haver Analytics

60-day+ delinquency rates for United States and Vermont, major conventional loan categories, through Q1-10

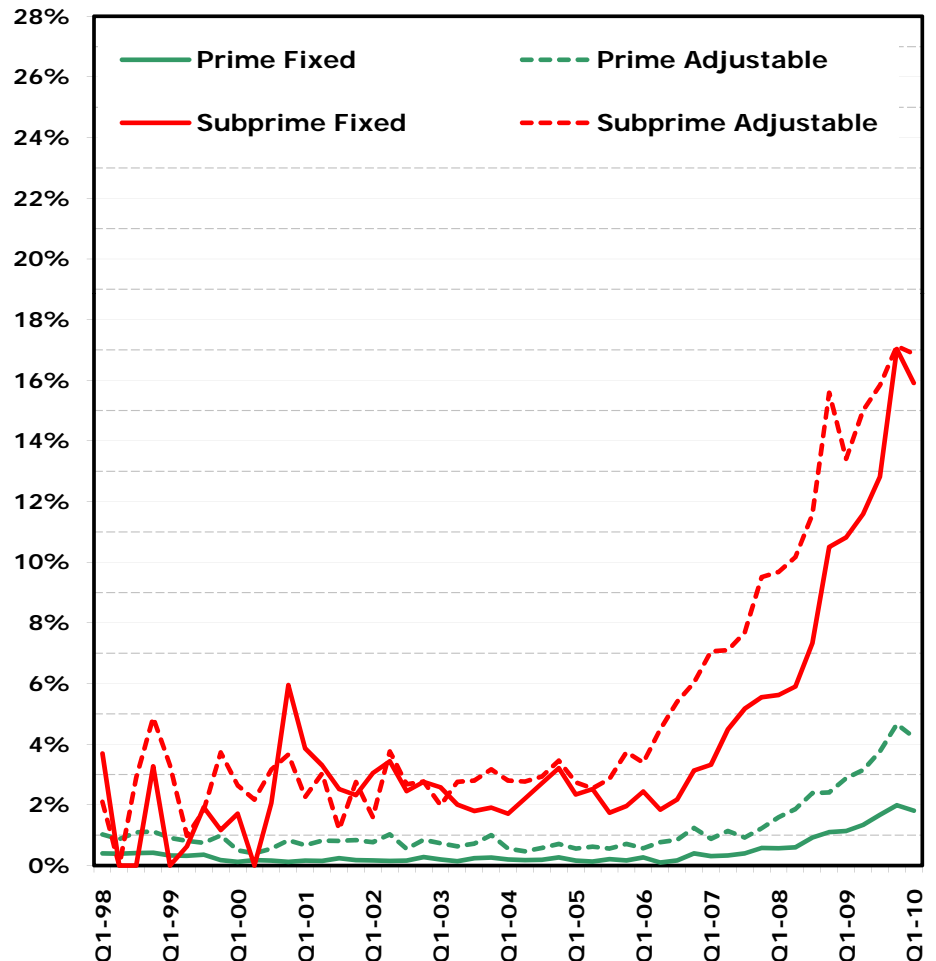
United States

Percent of loans with 60-day+ delinquency in quarter



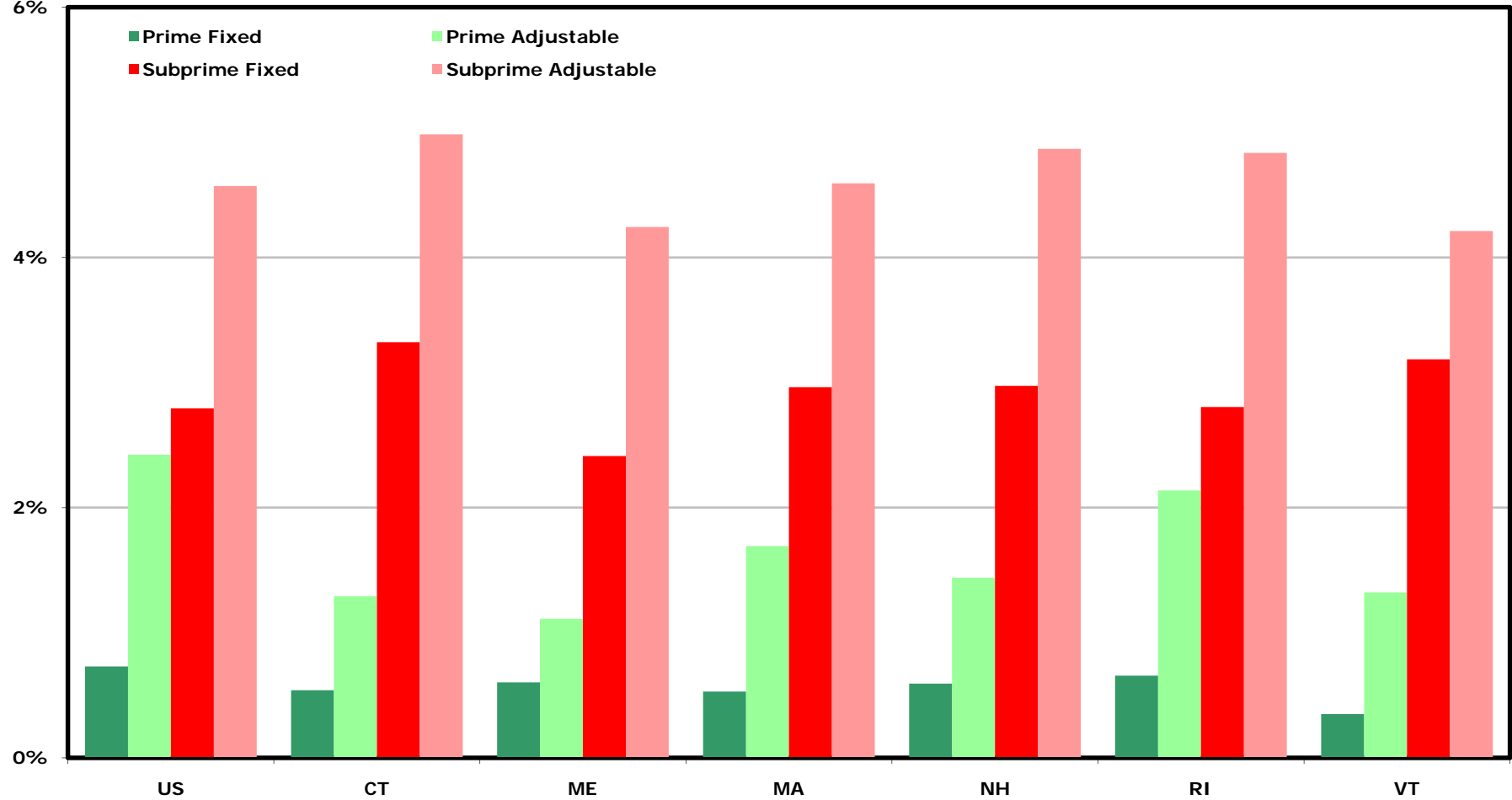
Vermont

Percent of loans with 60-day+ delinquency in quarter



Foreclosure rates for U.S. and New England states, major conventional loan categories, Q1-10

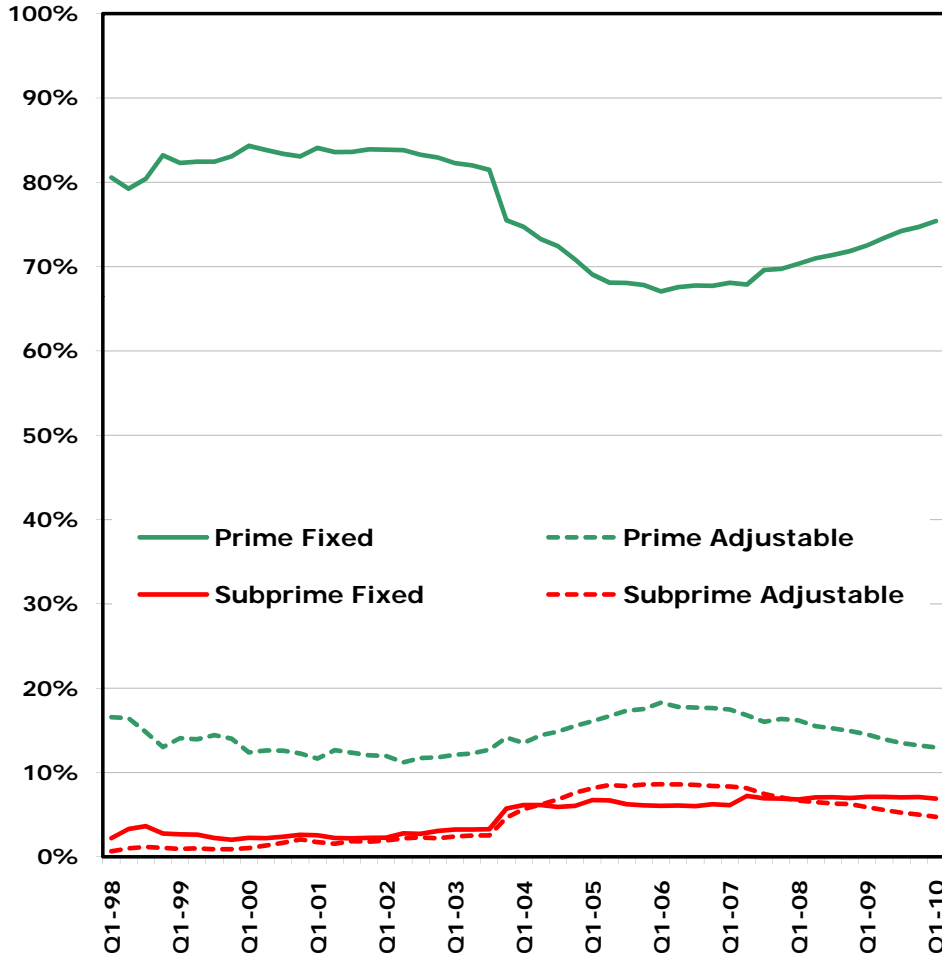
Percent of loans with foreclosure initiation in quarter



Market share, major conventional loan categories, United States and Vermont, through Q1-10

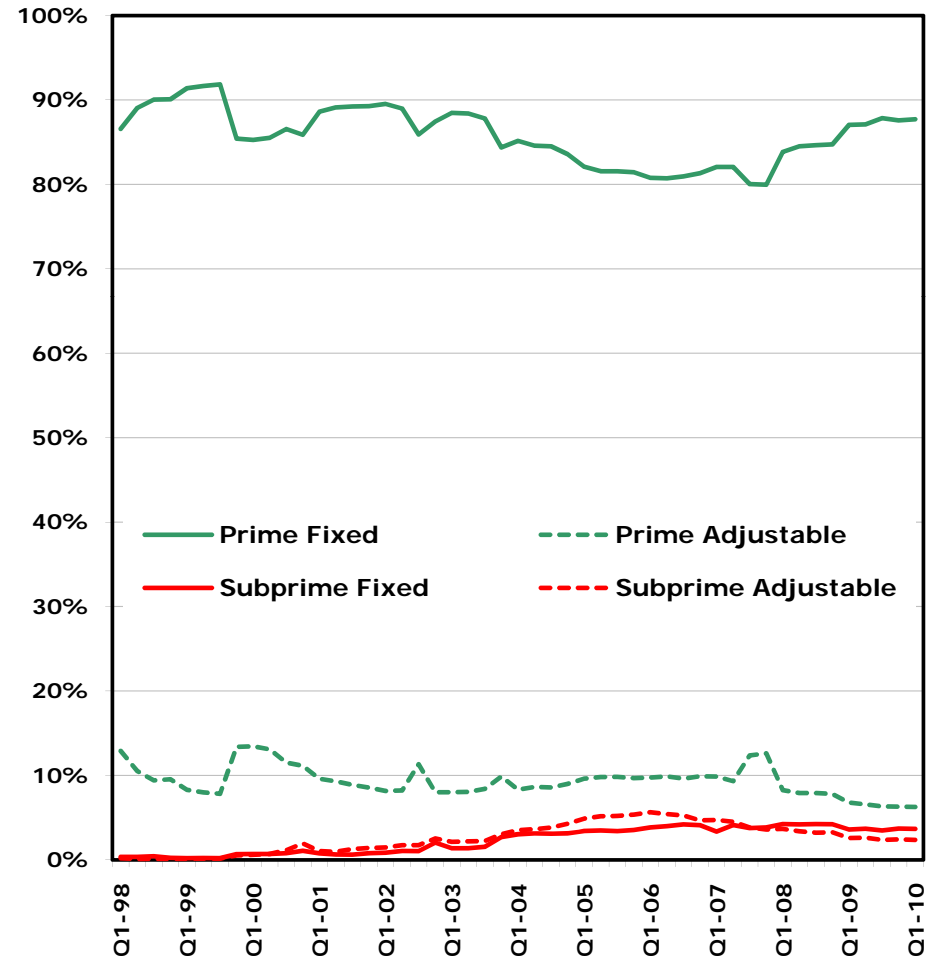
United States

Market share (quarterly values sum to 100%)



Vermont

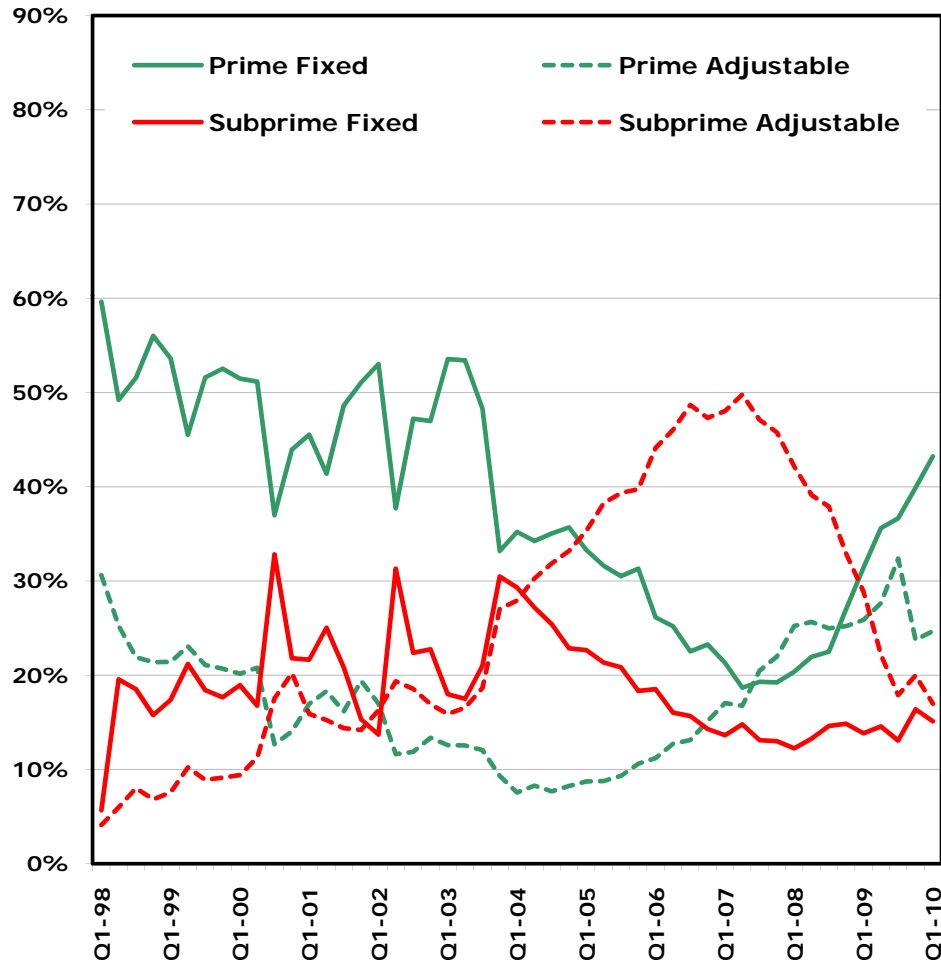
Market share (quarterly values sum to 100%)



Product foreclosure share, major conventional loan categories, United States and Vermont, through Q1-10

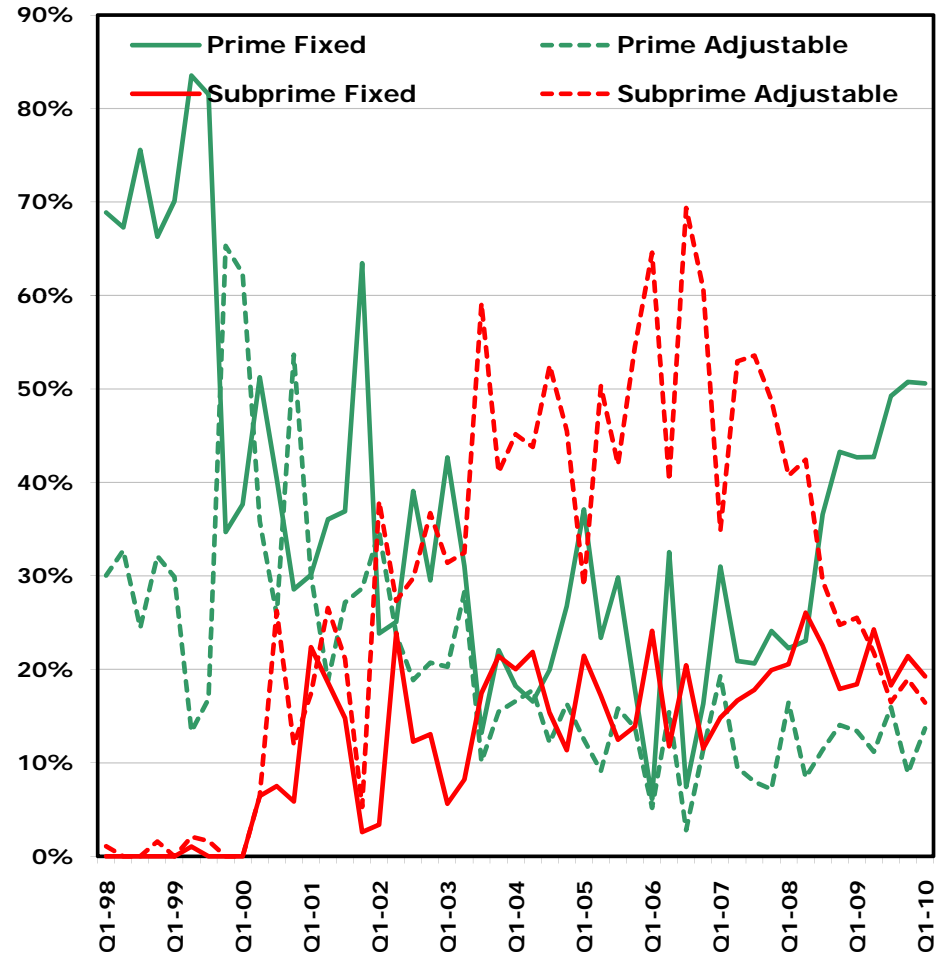
United States

Foreclosure share (quarterly values sum to 100%)



Vermont

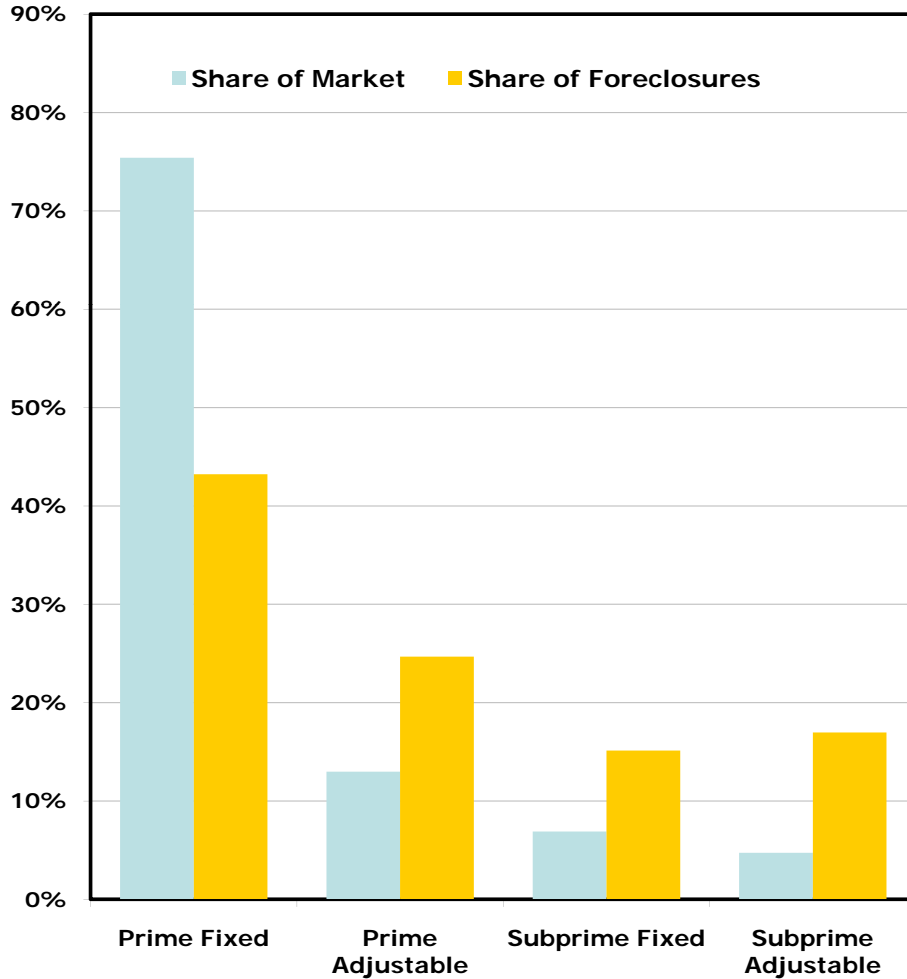
Foreclosure share (quarterly values sum to 100%)



Market and foreclosure share, major conventional loan categories, United States and Vermont, through Q1-10

United States

Market and foreclosure share



Vermont

Market and foreclosure share

