

Table 1: U.S. Economic Outlook

	2007	2008: Q1	2008: Q2	2008: Q3*	2008: Q4*	2009*
Real GDP Growth	2.0	0.9	3.3	-0.2 - 1.8	-1.3 - 1.5	0.7 - 2.0
Unemployment Rate	4.6	4.9	5.3	5.7 - 5.9	5.8 - 6.2	5.8 - 6.5
Consumer Price Index	2.9	4.3	5.0	4.1 - 7.6	1.6 - 3.6	2.2 - 3.7
Producer Price Index	3.9	9.2	10.6	4.3 - 13.9	-4.5 - 6.6	n/a

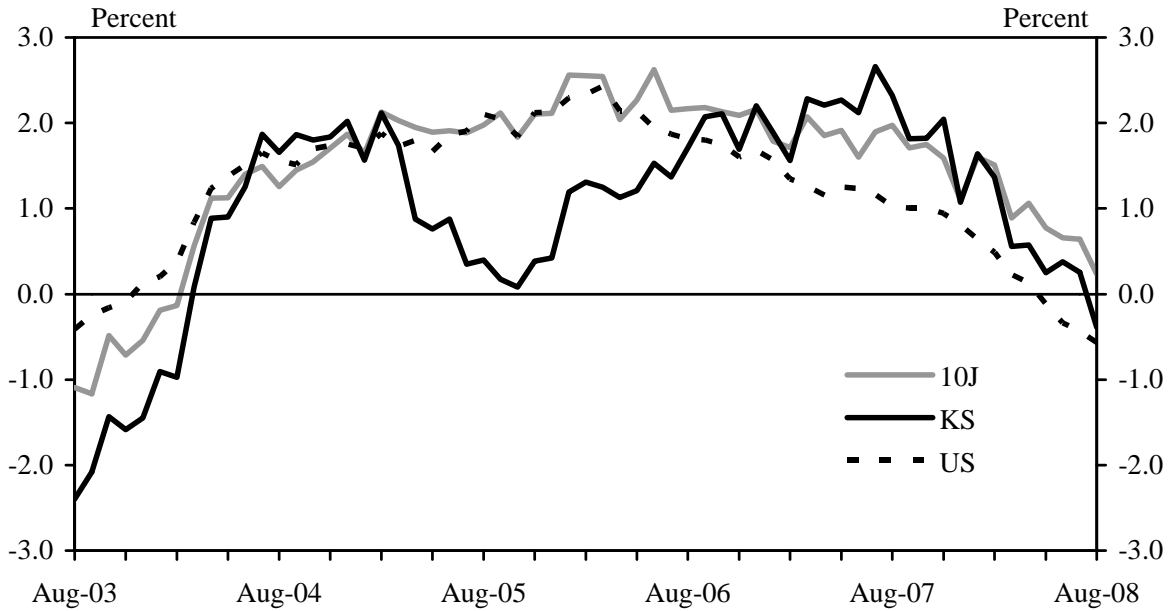
Source: Blue Chip Economic Indicators

* Forecasted September 10, 2008

Chart 1: The Tenth Federal Reserve District (10 J)



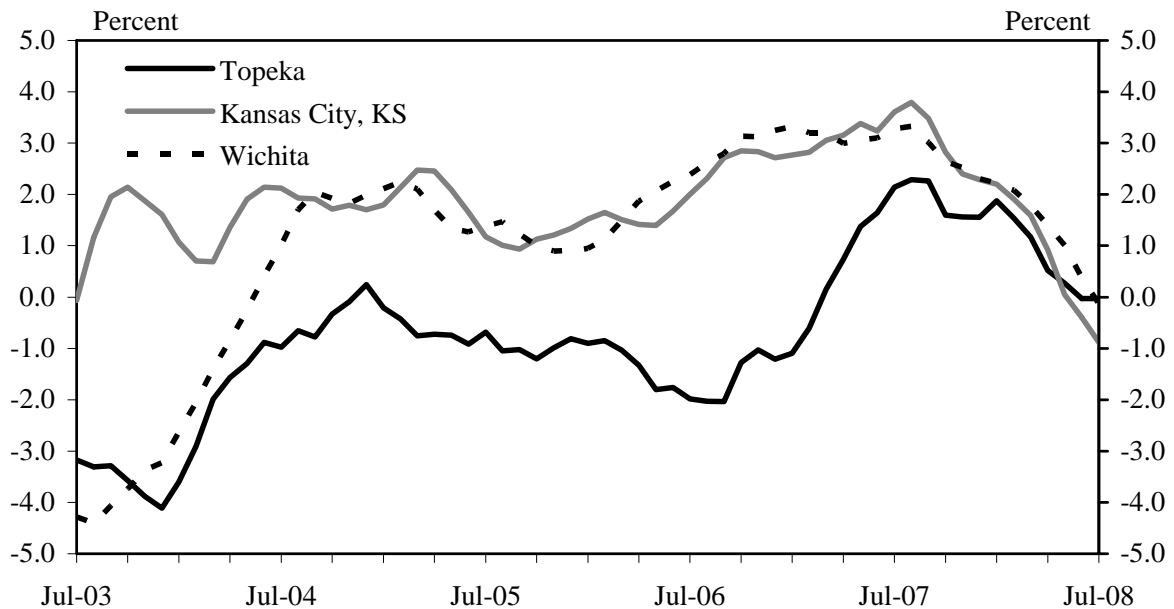
Chart 2: Growth in Private Nonfarm Employment: U.S., Tenth District and Kansas
Year-over-year



Source: Bureau of Labor Statistics

Latest release: 09/19/2008

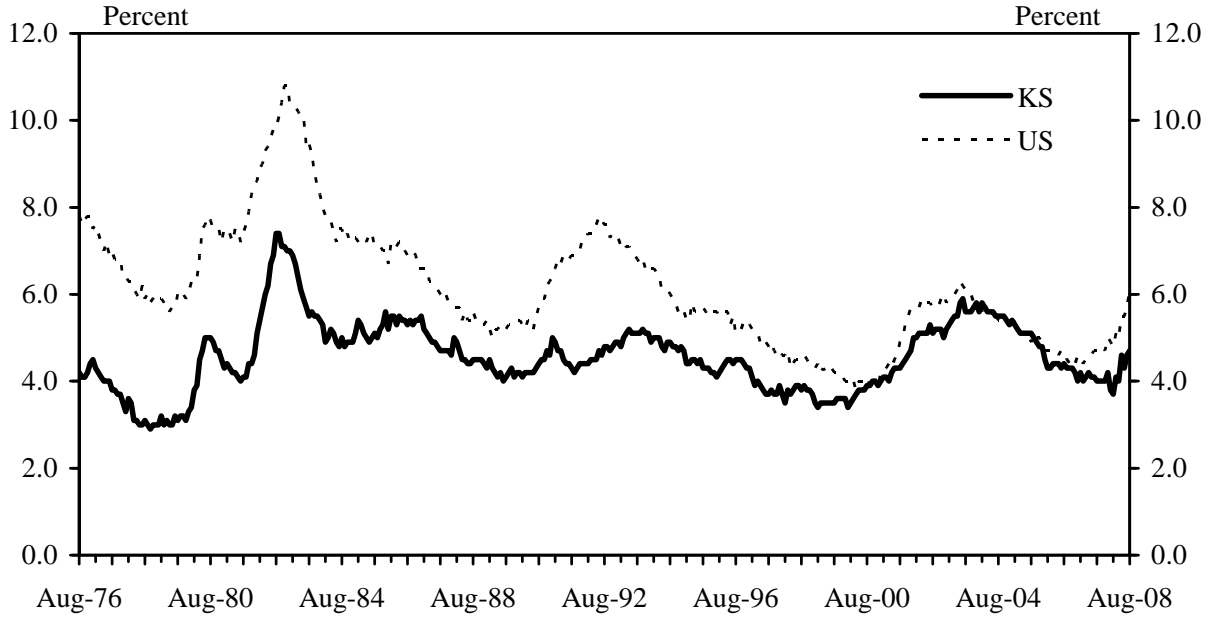
Chart 3: Growth in Private Nonfarm Employment: Kansas City, Topeka, and Wichita
Year-over-year



Source: Bureau of Labor Statistics

Latest release: 08/27/2008

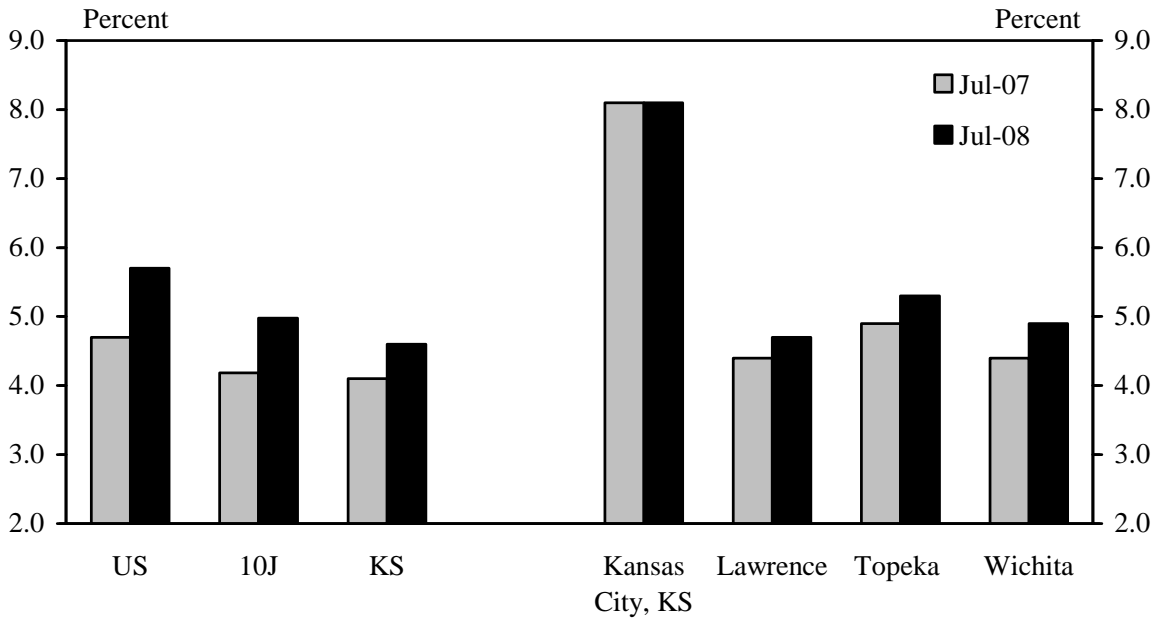
Chart 4: Unemployment Rate
Seasonally adjusted



Source: Bureau of Labor Statistics

Latest release: 09/19/2008

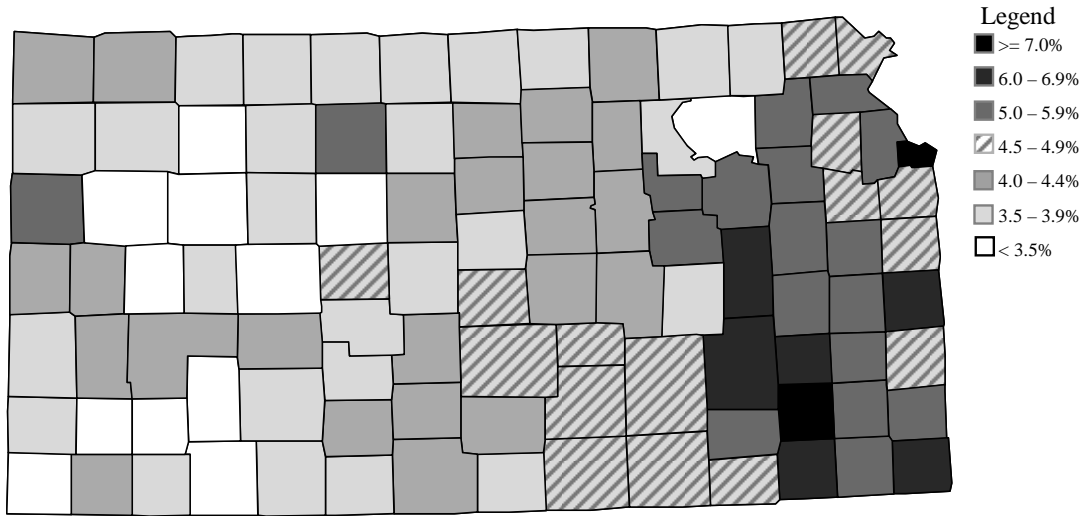
Chart 5: Unemployment Rates in Kansas Cities, July 2008
Seasonally adjusted



Source: Bureau of Labor Statistics

Latest release: 08/27/2008

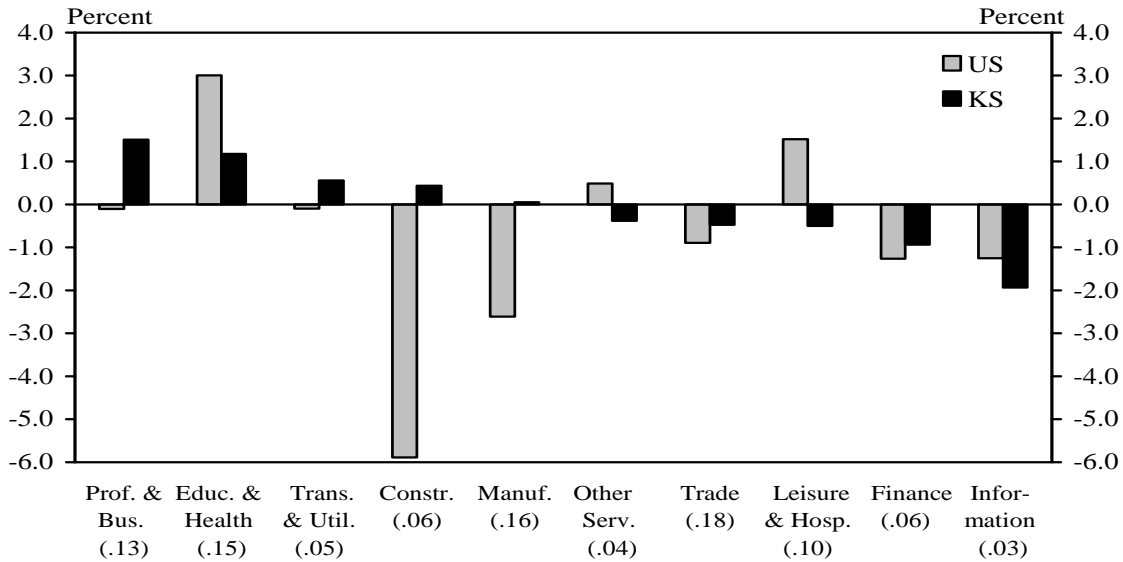
Chart 6: Unemployment Rates by County, July 2008



Source: Bureau of Labor Statistics

Latest Release Date: 08/27/2008

Chart 7: Private Job Growth by Industry
July 2008 over July 2007

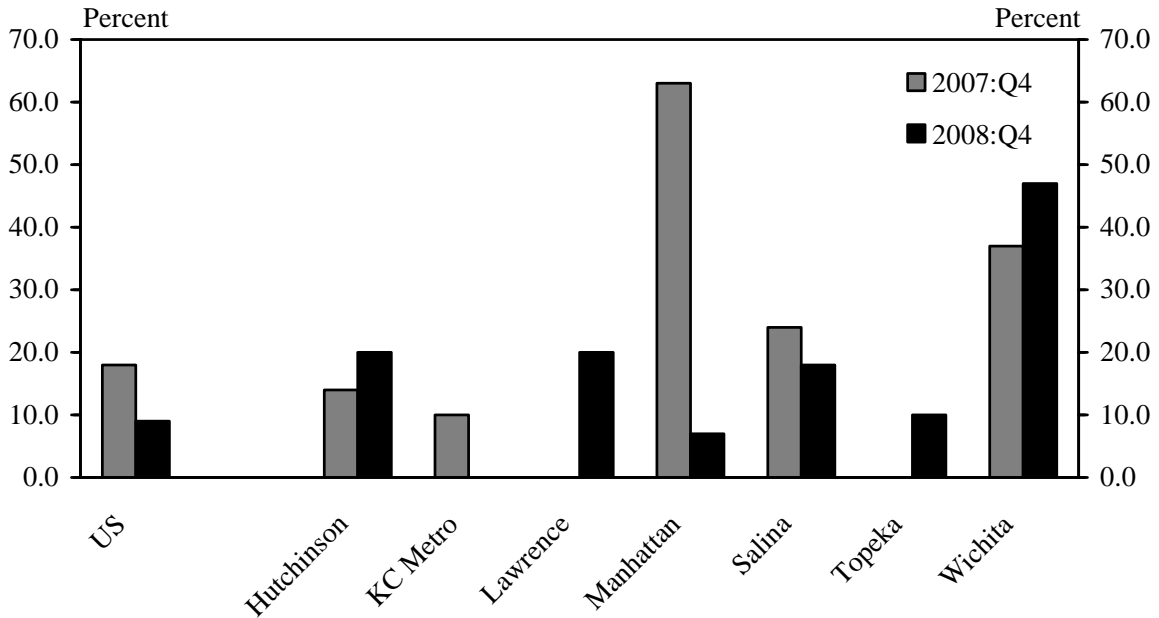


Source: Bureau of Labor Statistics

Latest release: 08/15/2008

Note: Number in parentheses is the industry's share of total private jobs in Kansas in Jul-08.

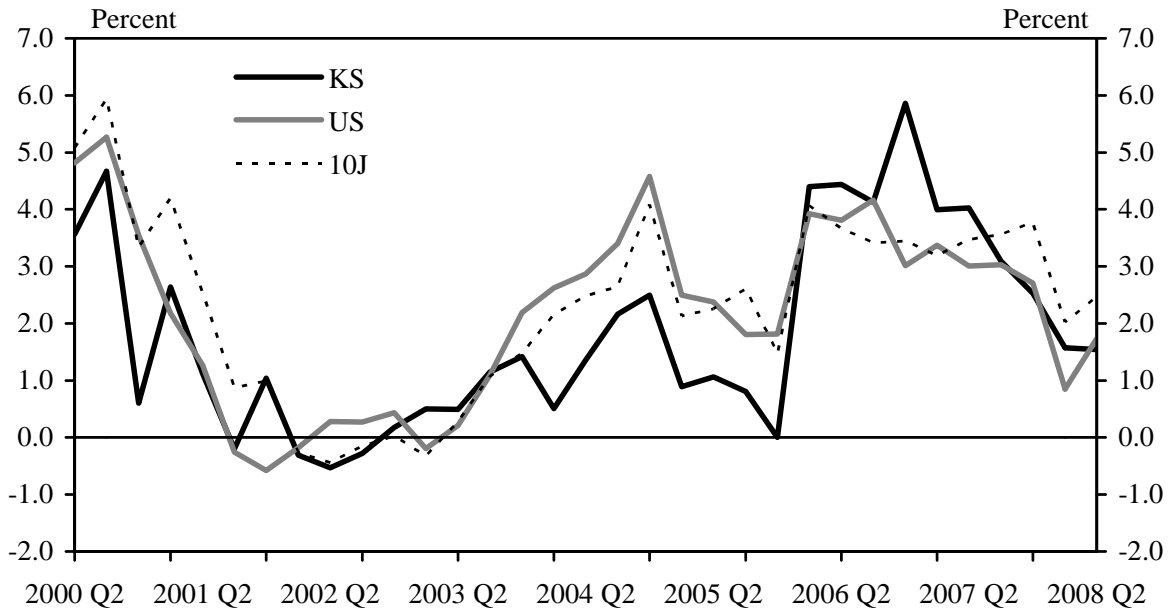
Chart 8: Net Percentage of Firms Planning to Increase Employment



Source: Manpower Inc.

Latest release: 09/09/2008

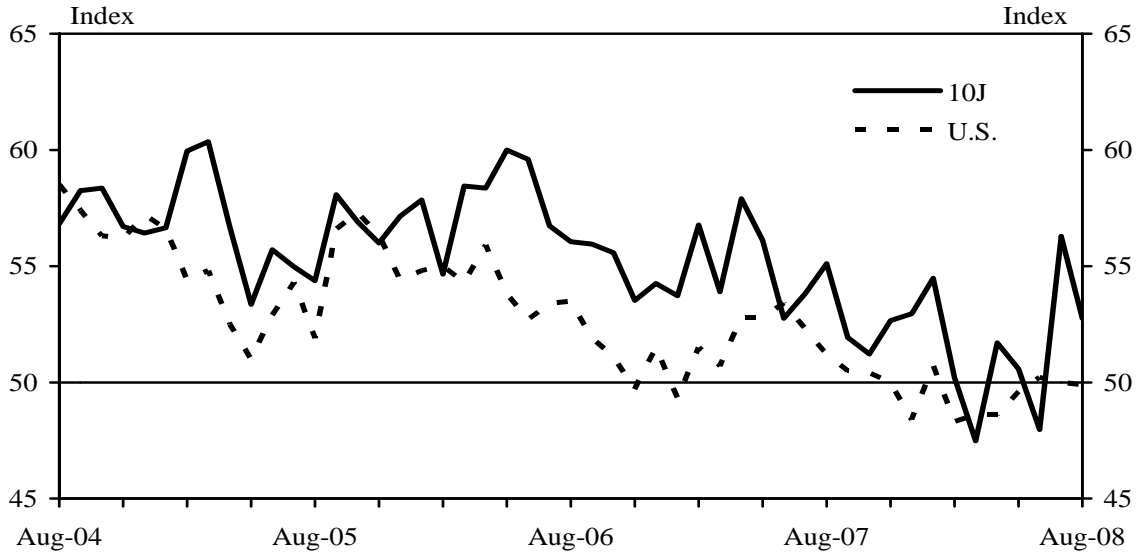
Chart 9: Growth in Real Personal Income
Year-over-year



Source: Bureau of Economic Analysis

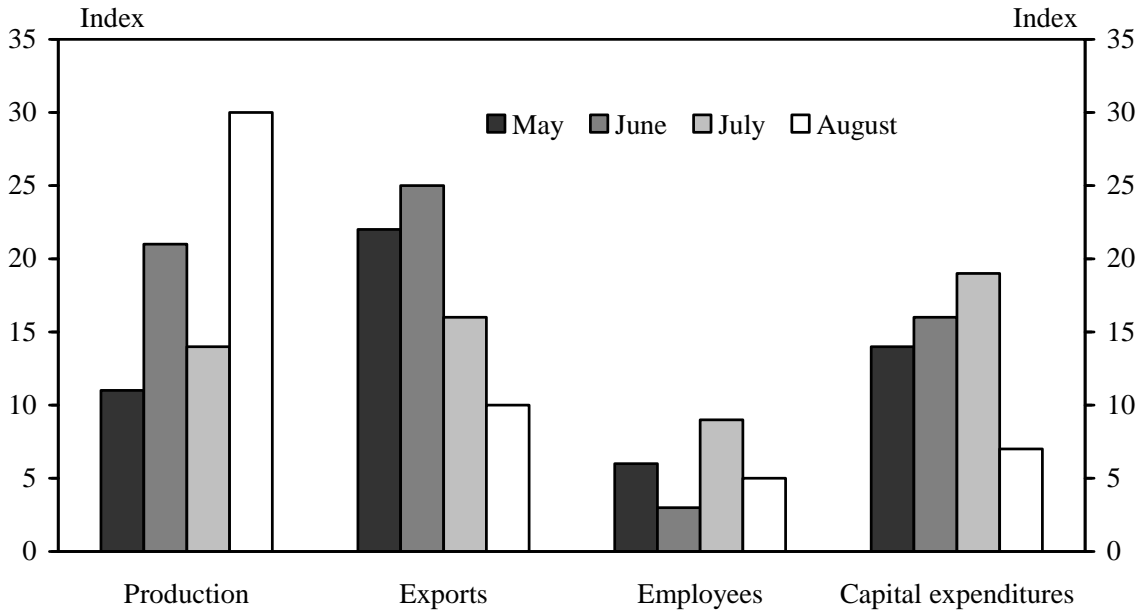
Latest release: 09/18/2008

Chart 10: Manufacturing Activity
 Month-over-month PMI indexes, seasonally adjusted



Sources: ISM, FRBKC Manufacturing Survey
 Latest release: 08/28/2008 for the Manufacturing Survey and 09/02/2008 for ISM
 Note: 10J index is computed on ISM basis (50 = zero change)

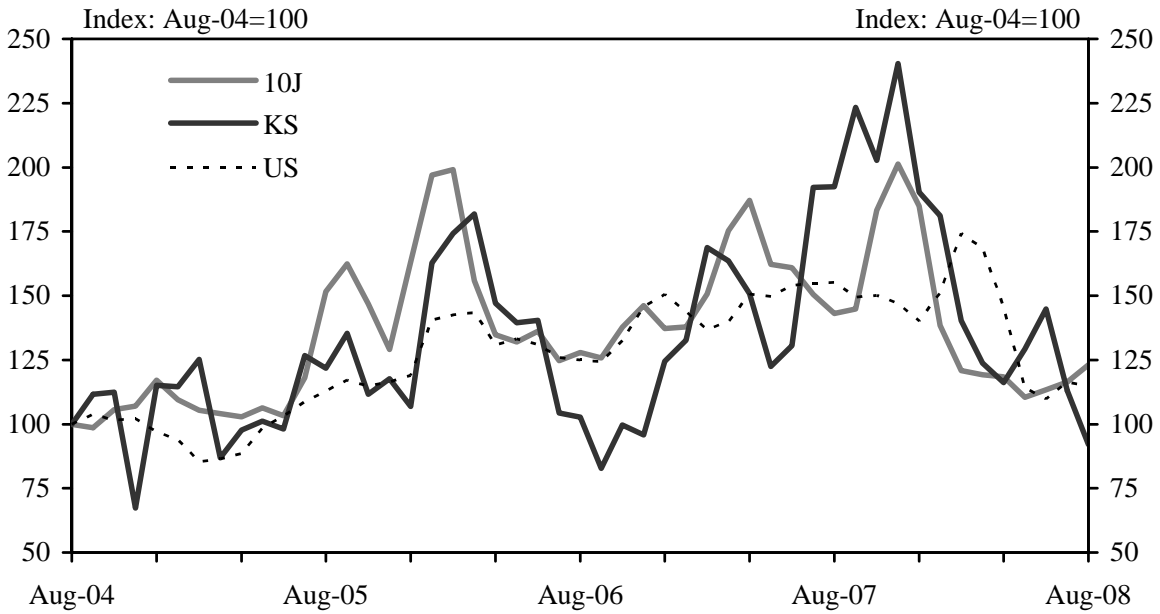
Chart 11: Tenth District Manufacturing Indexes: Activity Expected in Six Months
 Seasonally adjusted



Source: FRBKC Manufacturing Survey

Latest release: 08/28/2008

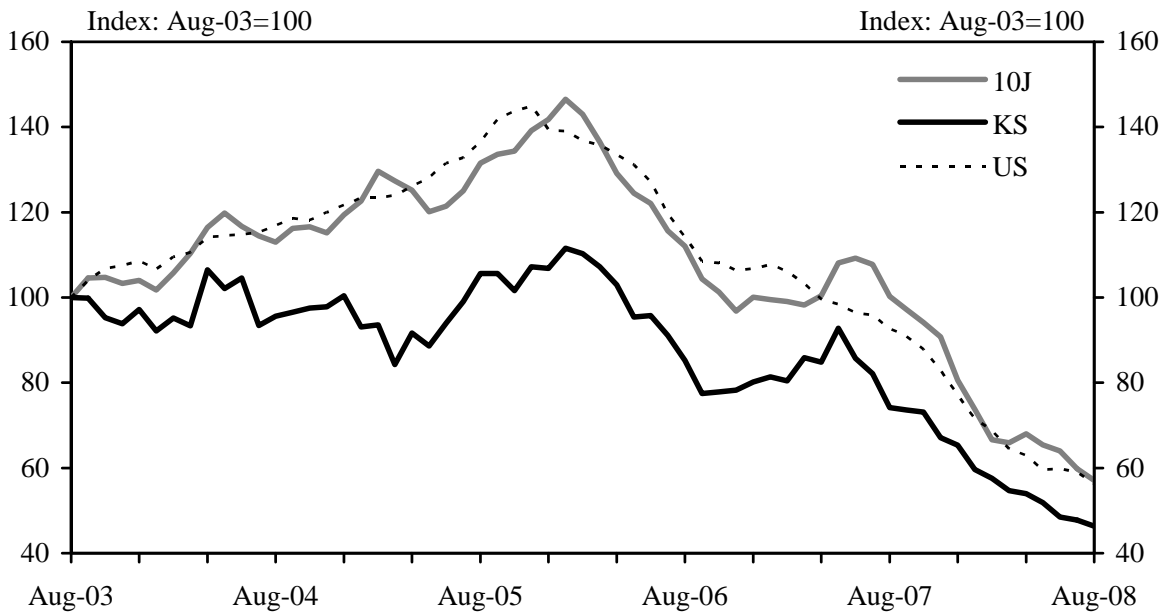
Chart 12: Value of Commercial Construction Contracts
 Seasonally adjusted, 3-month moving average



Source: F.W. Dodge, Inc.

Latest release: 09/15/2008

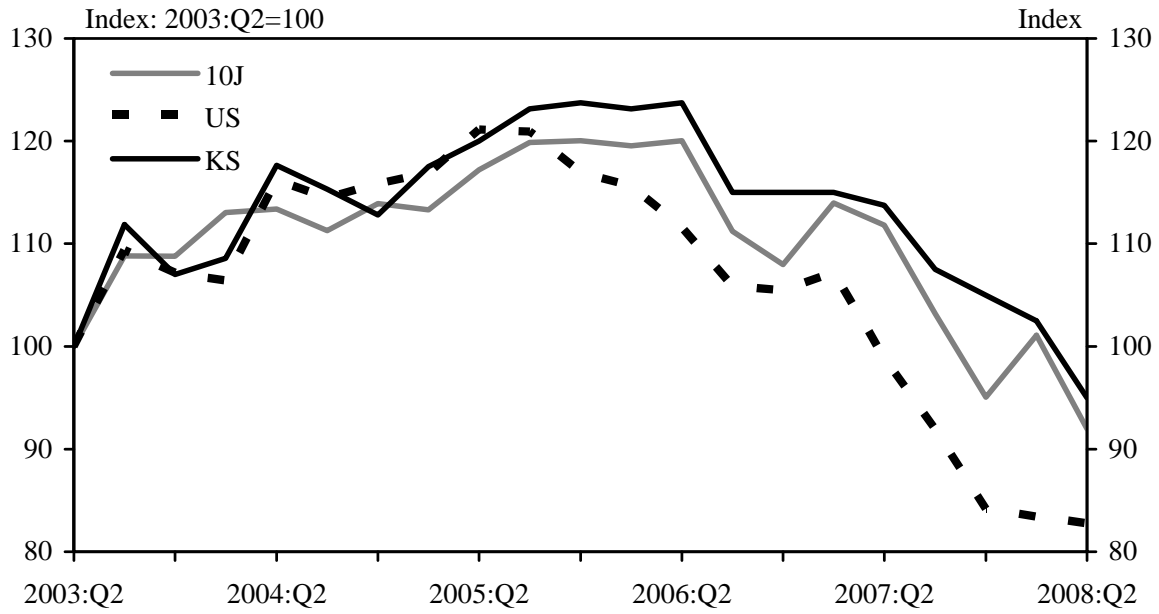
Chart 13: Value of Residential Construction Contracts
 Seasonally adjusted, 3-month moving average



Source: F.W. Dodge, Inc.

Latest release: 09/15/2008

Chart 14: Sales of Existing Homes
Seasonally adjusted



Source: National Association of Realtors

Latest release: 08/14/2008

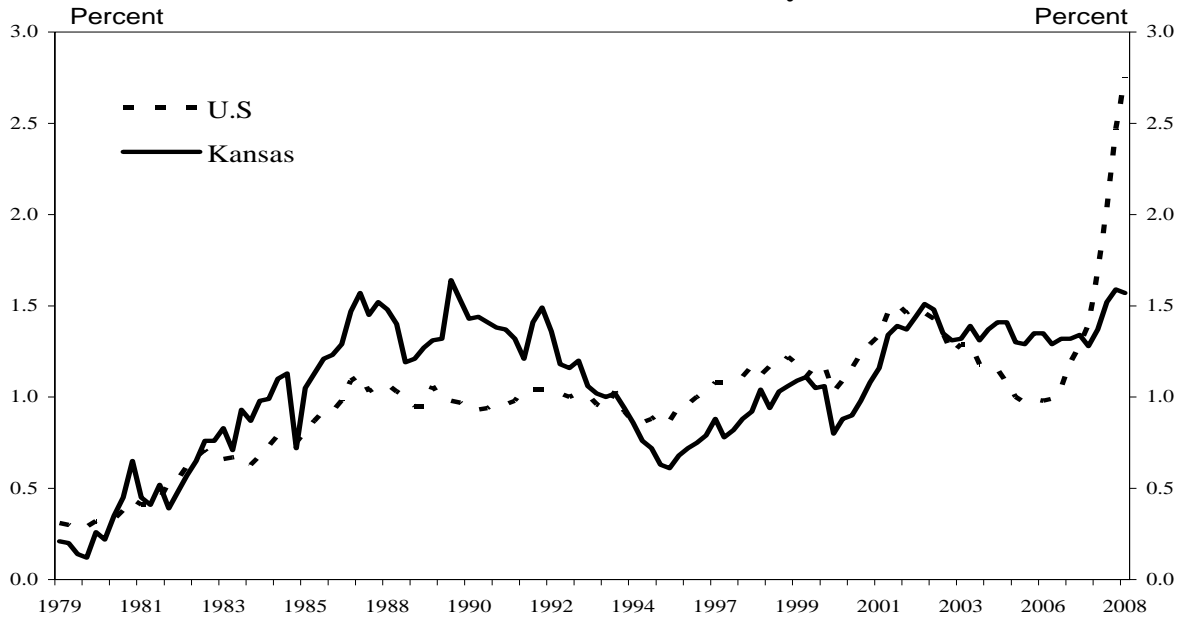
Table 2: Home Price Appreciation

	OFHEO ¹ Q2 2008 over Q2 2007	NAR ² Q2 2008 over Q2 2007
United States	-1.71%	-7.61%
Kansas	1.26%	
Kansas City	0.05%	-3.11%
Lawrence	0.90%	
Topeka	-0.09%	-1.25%
Wichita	2.22%	3.45%

1) Office of Federal Housing Enterprise Oversight; Repeat sales index (quality-adjusted)

2) National Association of Realtors; Median sales price (not quality-adjusted)

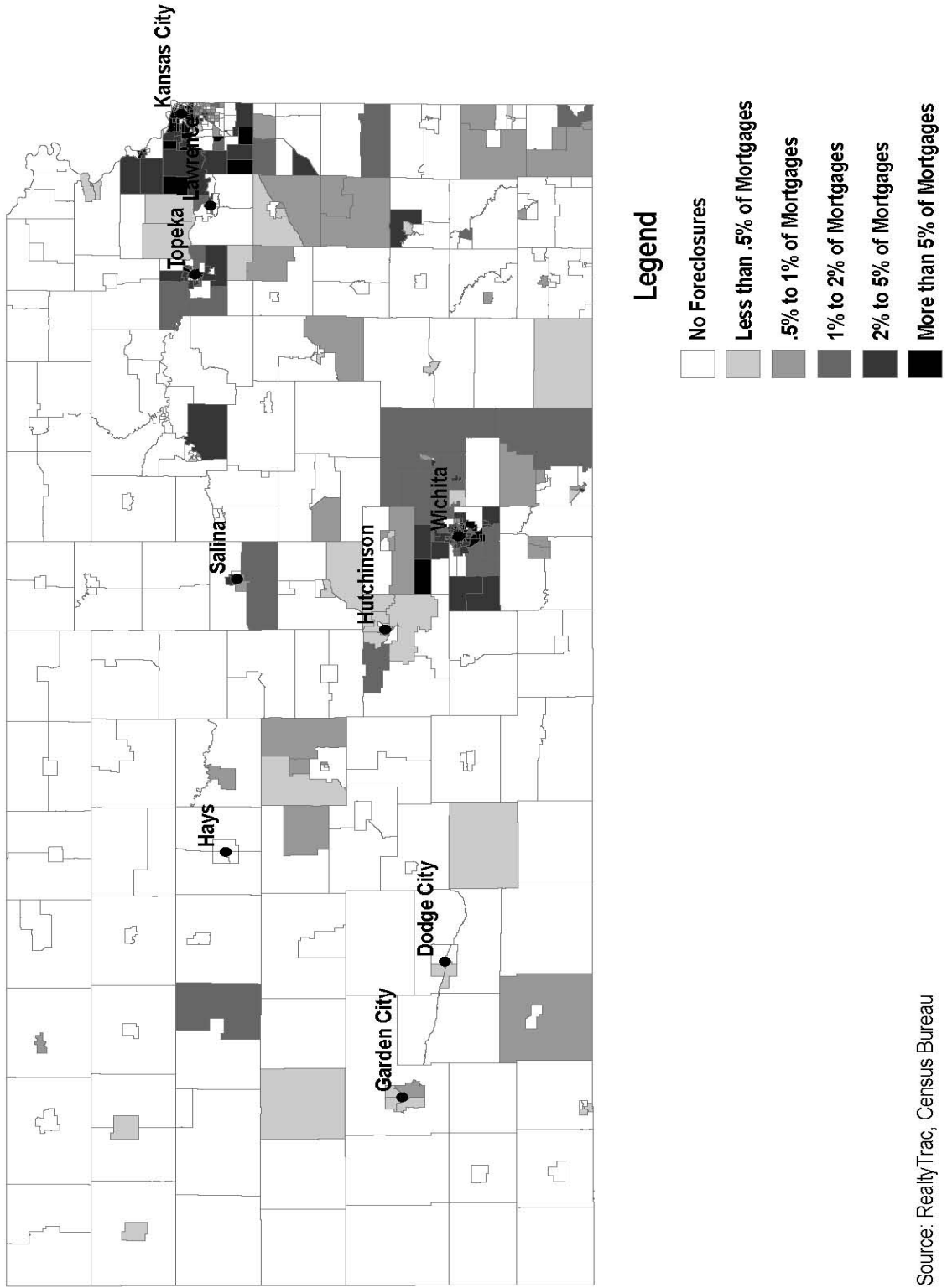
Chart 15: Foreclosure Inventory



Source: Mortgage Bankers Association

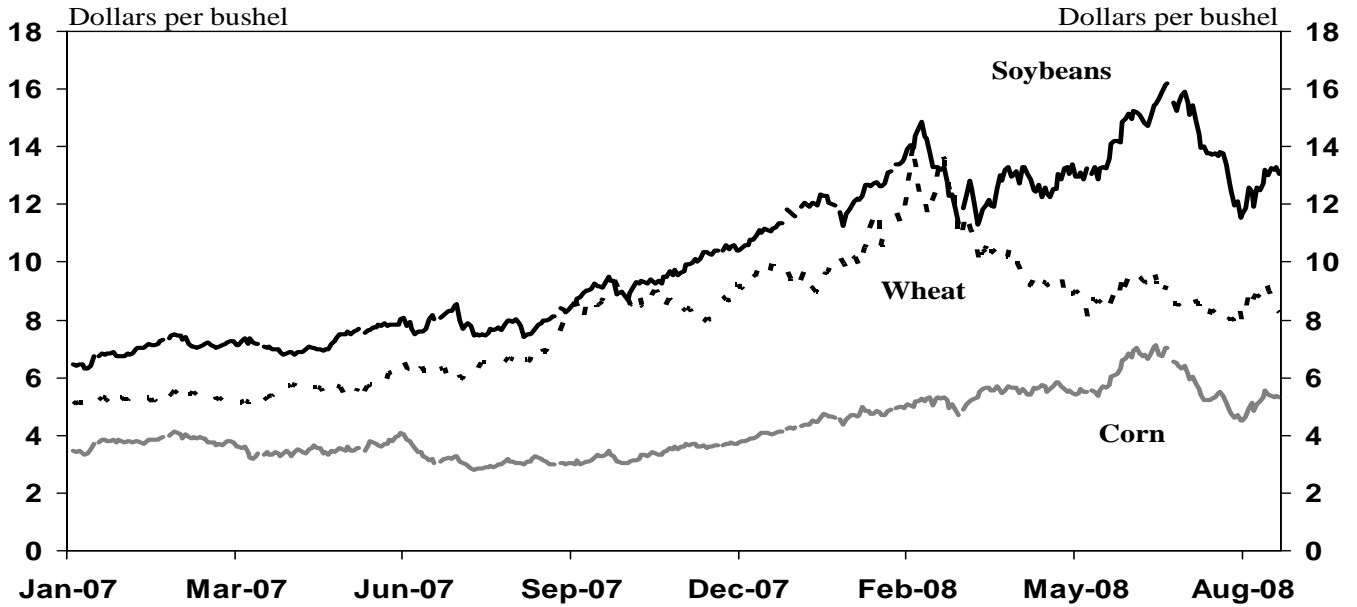
Latest release: 09/05/2008

Chart 16: Kansas Foreclosure Inventory Map, 2008



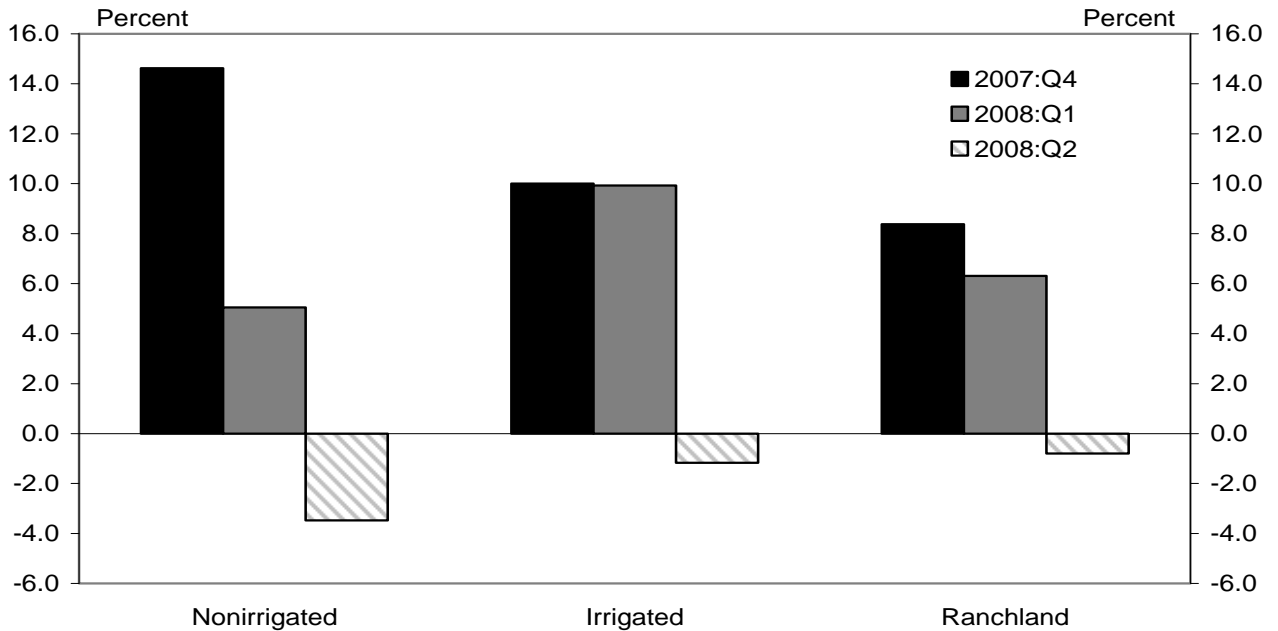
Source: RealtyTrac, Census Bureau

Chart 17: U.S. Crop Prices



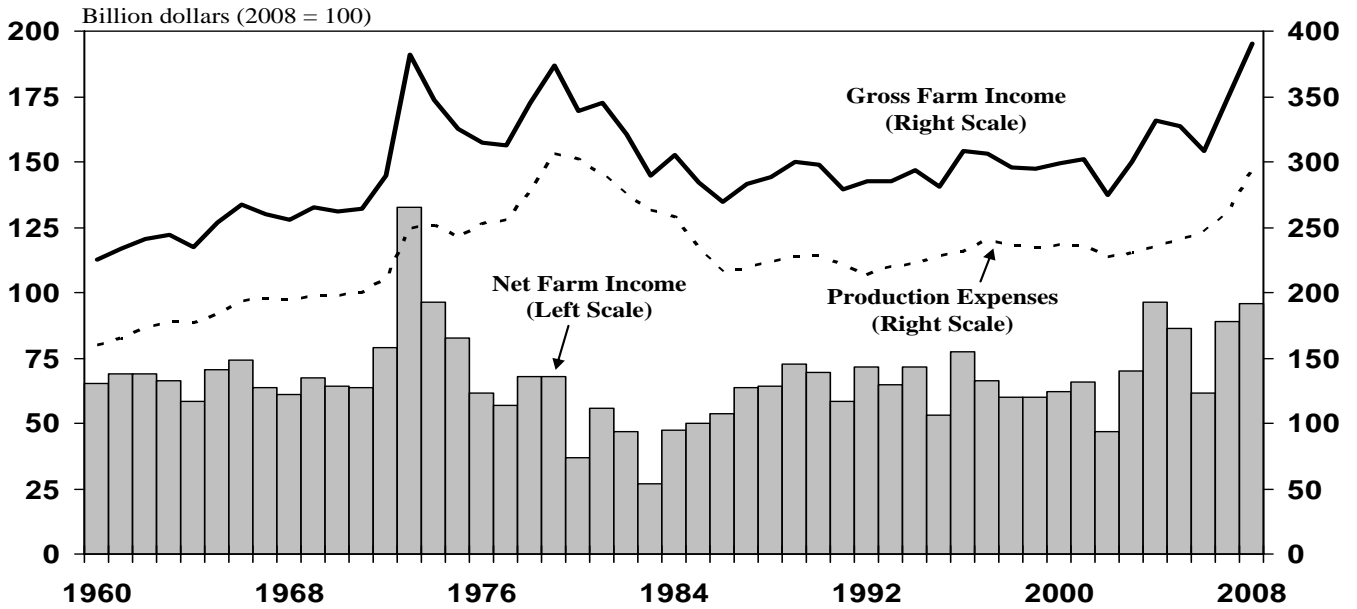
Source: USDA

Chart 18: Farmland Values in Kansas
Quarter-over-quarter



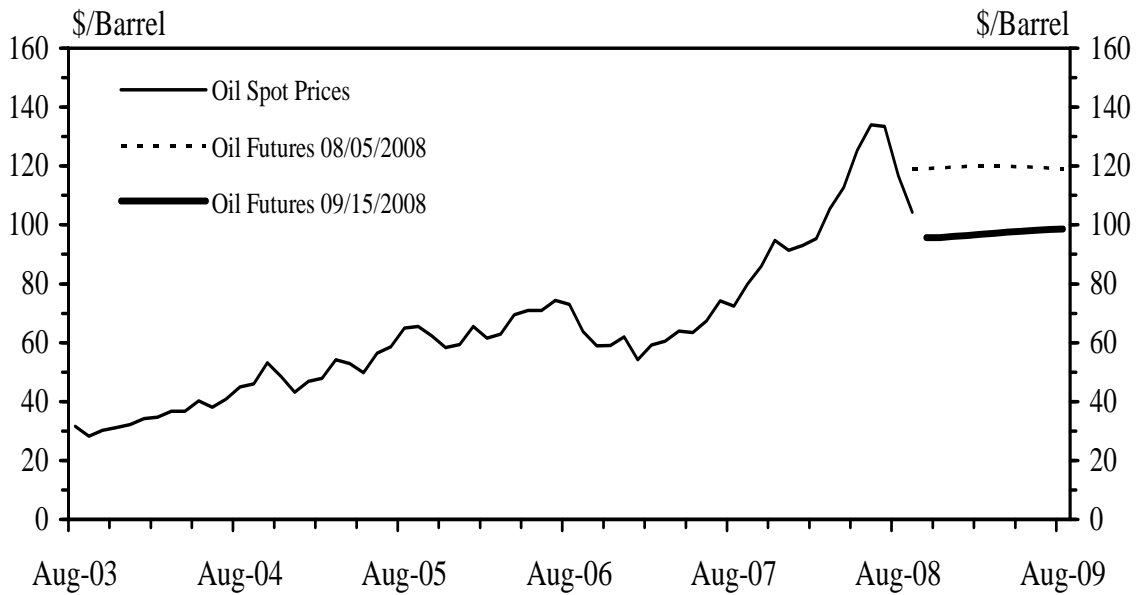
Source: Federal Reserve Bank of Kansas City, Ag Credit Survey

Chart 19: U.S. Real Farm Income and Production Expenses



Source: USDA

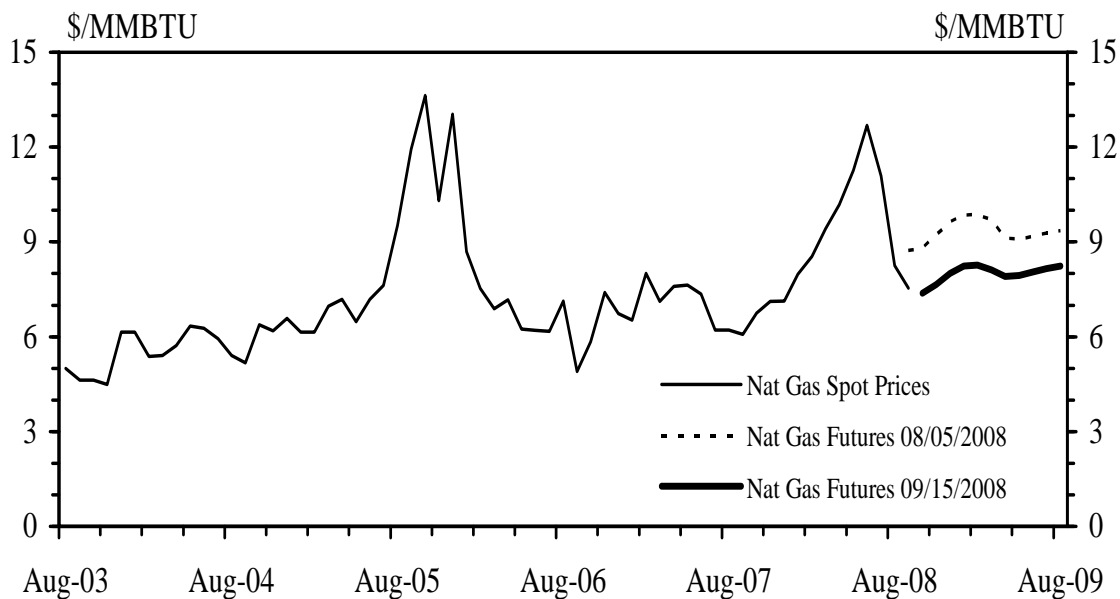
Chart 20: Oil Prices



Source: Bloomberg Energy Services

Latest release: 09/15/2008

Chart 21: Natural Gas Prices

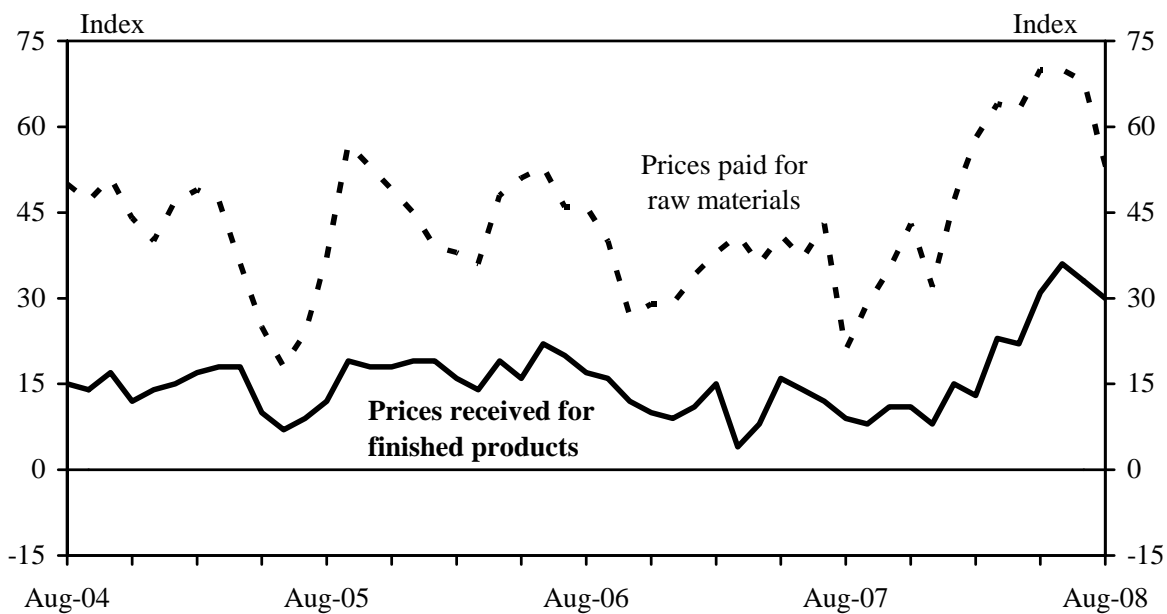


Source: Bloomberg Energy Services

Latest release: 09/15/2008

Chart 22: Manufacturing Price Pressures

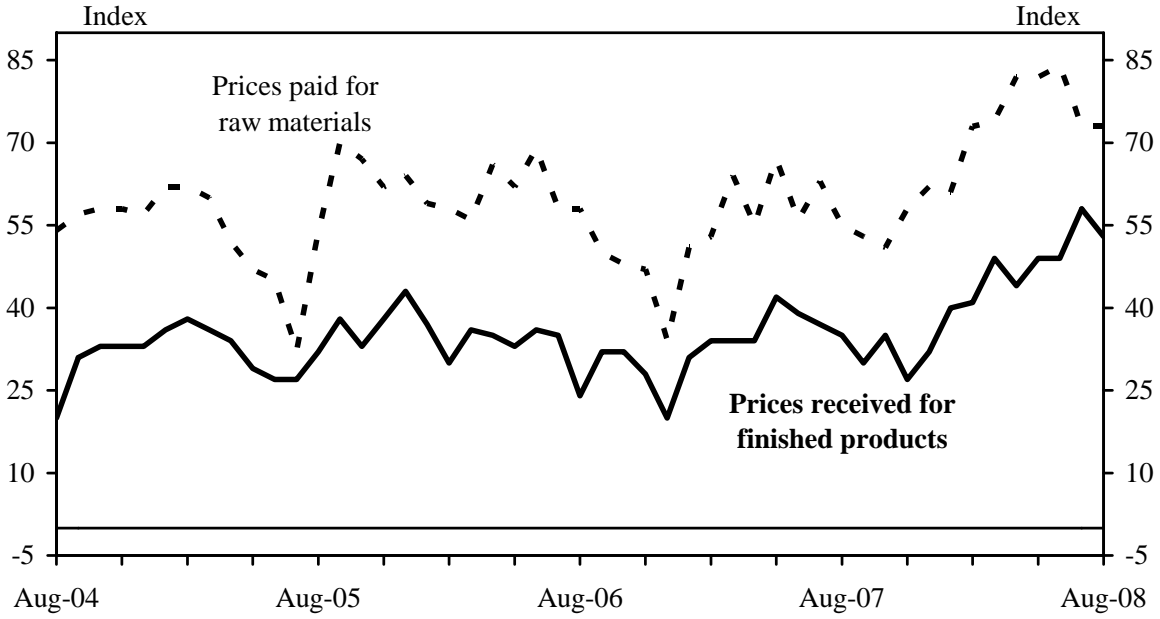
Month-over-month price diffusion index for the Tenth District



Source: FRBKC Manufacturing Survey

Latest release: 08/28/2008

Chart 23: Manufacturing Price Pressures
 Six-month-ahead price diffusion index for the Tenth District



Source: FRBKC Manufacturing Survey

Latest release: 08/28/2008

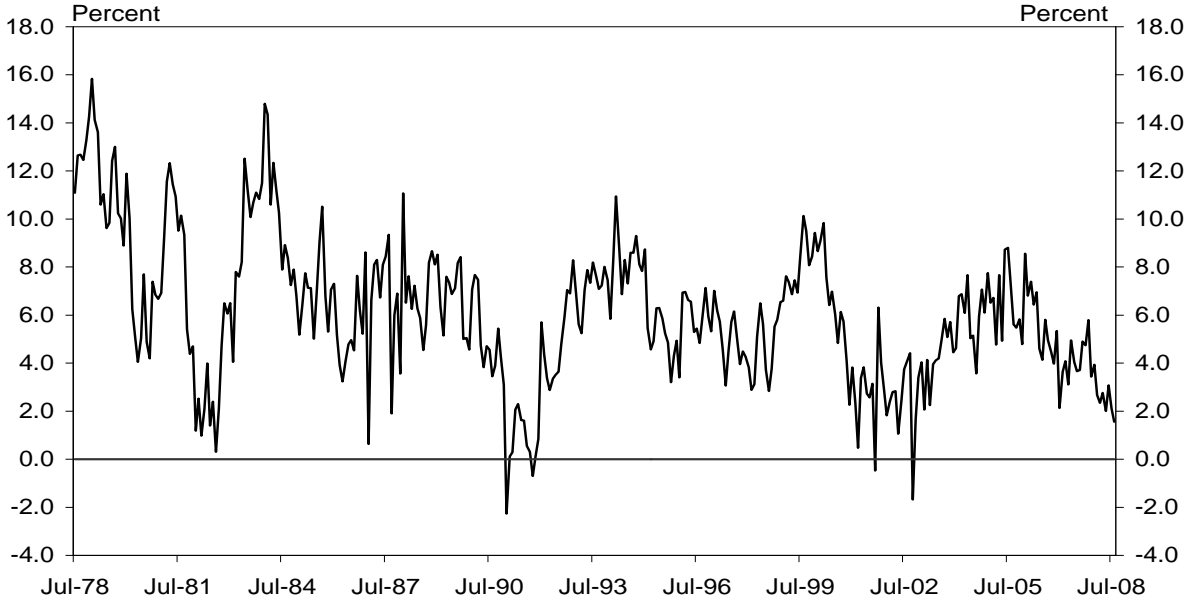
Chart 24: University of Michigan's Consumer Confidence Index



Source: University of Michigan

Latest release: 09/12/2008

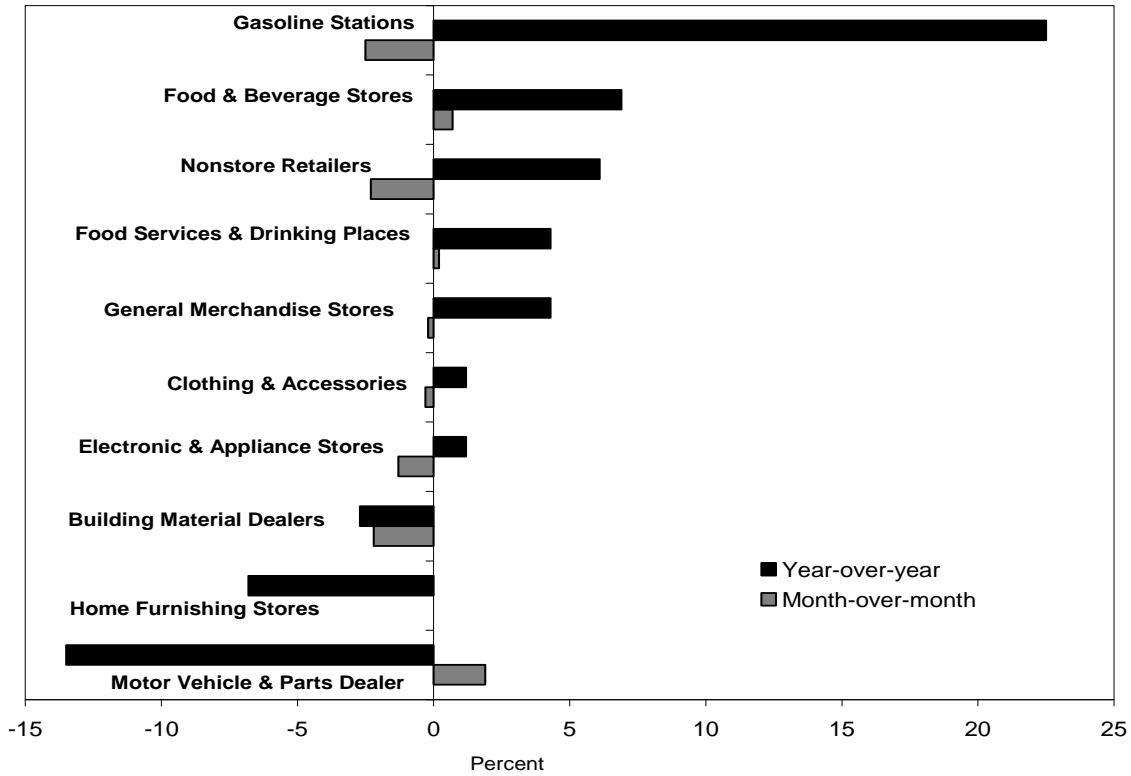
Chart 25: National Retail Sales
Year-over-year, seasonally adjusted



Source: US Census Bureau

Latest release: 09/12/2008

Chart 26: National Retail Sales by Type



Source: U.S. Census Bureau

Latest release: 09/12/2008