

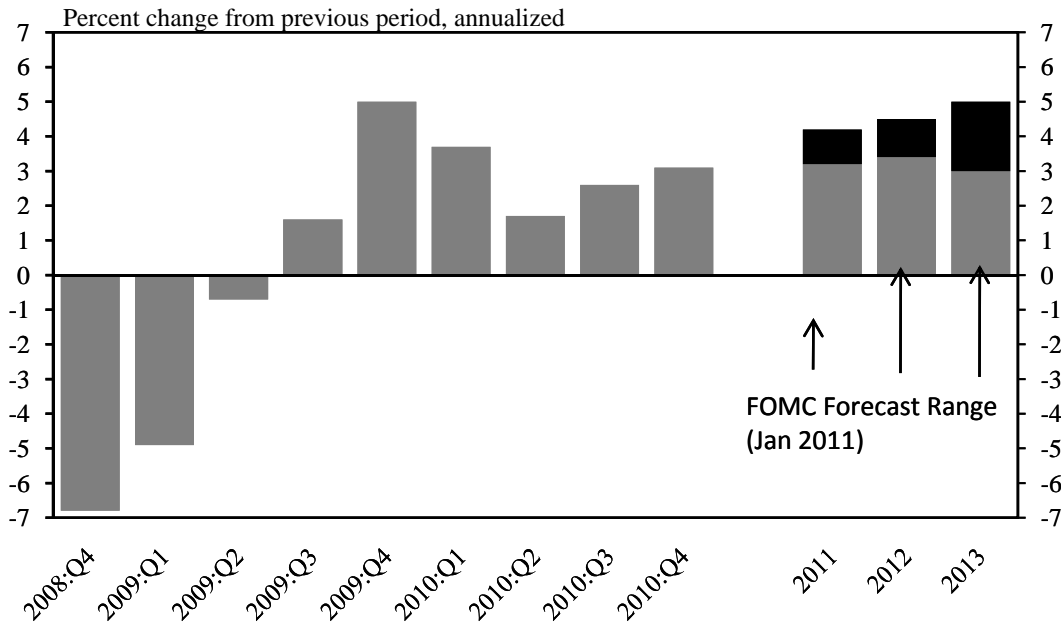
National and Regional Economic Update

Alison Felix^{*}
Senior Economist
Federal Reserve Bank of Kansas City

Community Development Advisory Council
Kansas City, Missouri
March 31, 2011

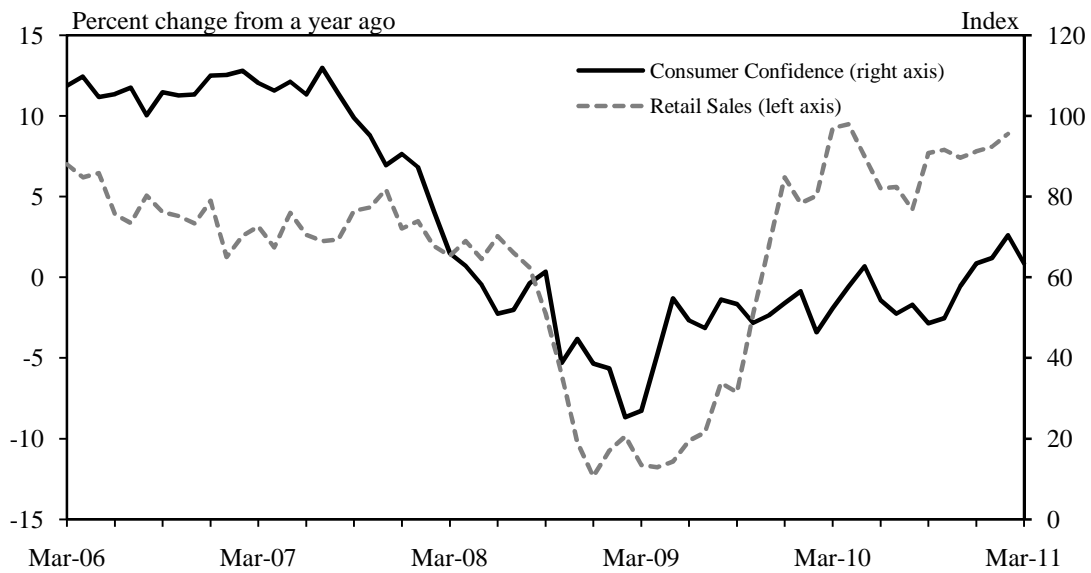
^{*} The views expressed are those of the presenter and do not necessarily reflect the positions of the Federal Reserve Bank of Kansas City or the Federal Reserve System. The presenter can be contacted at Alison.Felix@kc.frb.org.

Chart 1: Real Gross Domestic Product



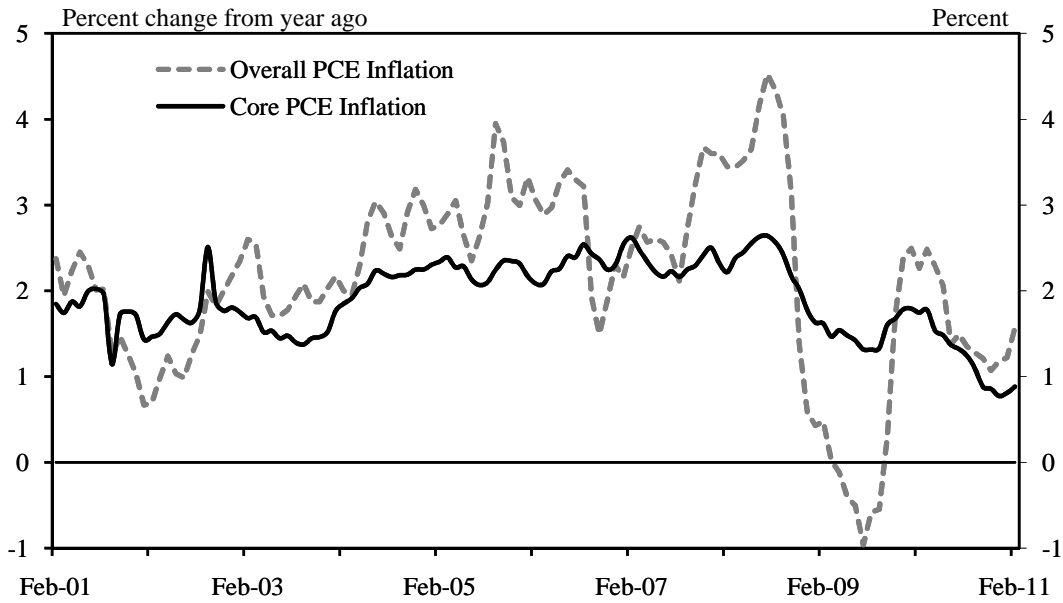
Source: Bureau of Economic Analysis; FOMC

Chart 2: Retail Sales and Consumer Confidence



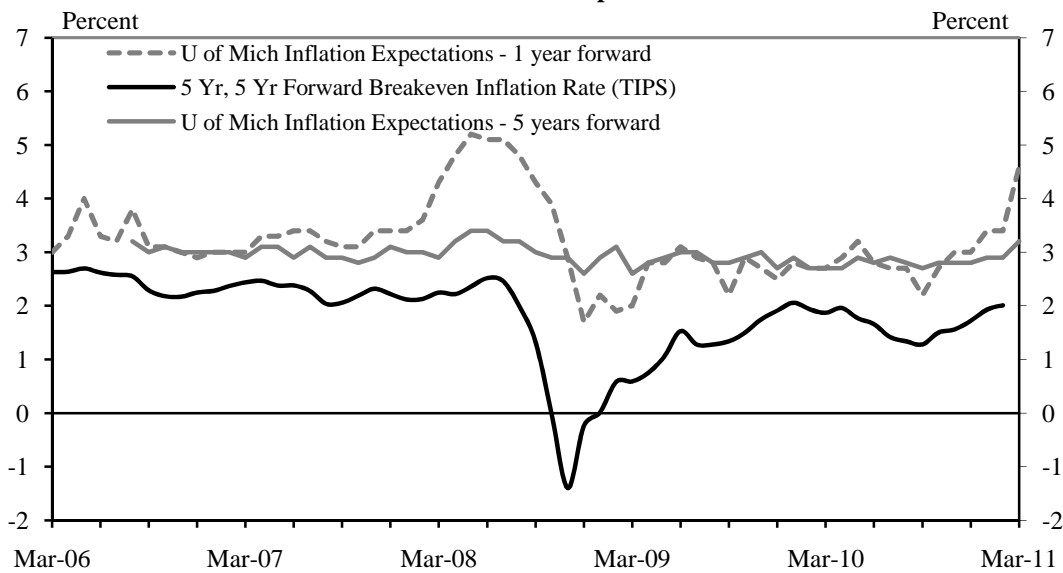
Source: Census Bureau and Consumer Confidence Board

Chart 3: Inflation



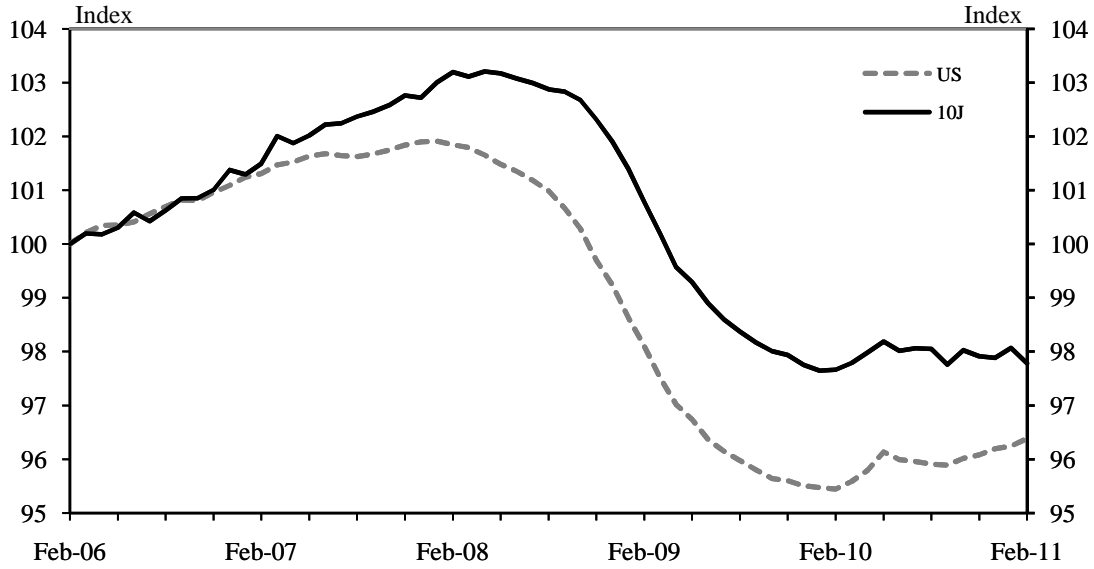
Source: Bureau of Economic Analysis

Chart 4: Inflation Expectations



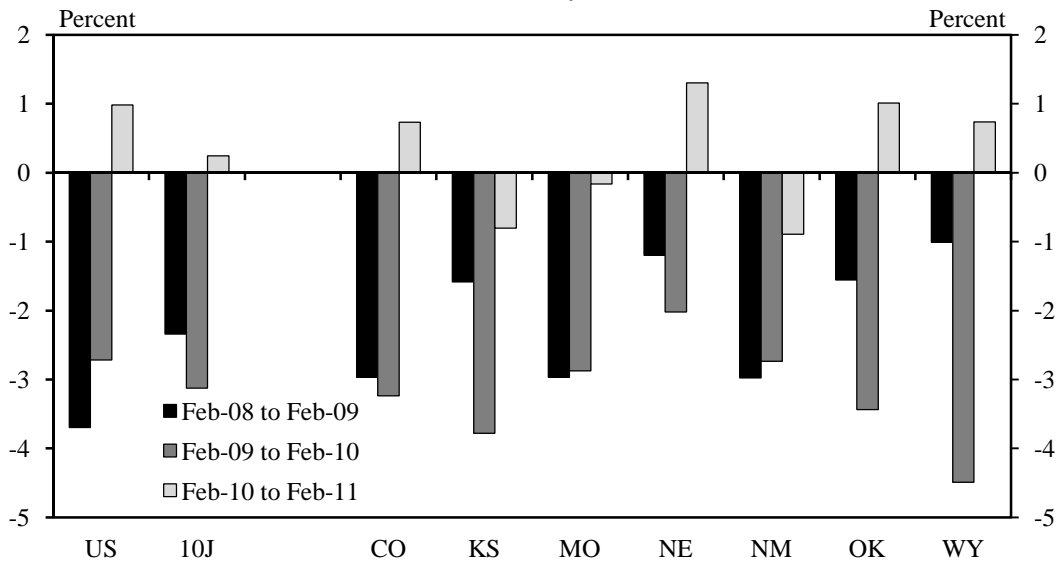
Source: University of Michigan and Federal Reserve Board of Governors

Chart 5: Total Nonfarm Employment
Seasonally adjusted



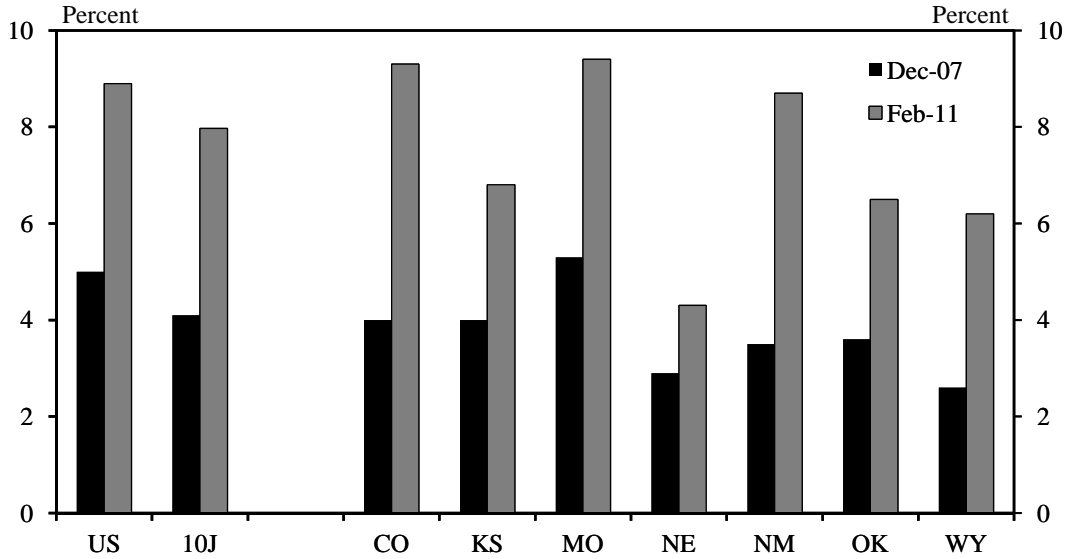
Source: Bureau of Labor Statistics

Chart 6: Total Nonfarm Employment by State
Year-over-year



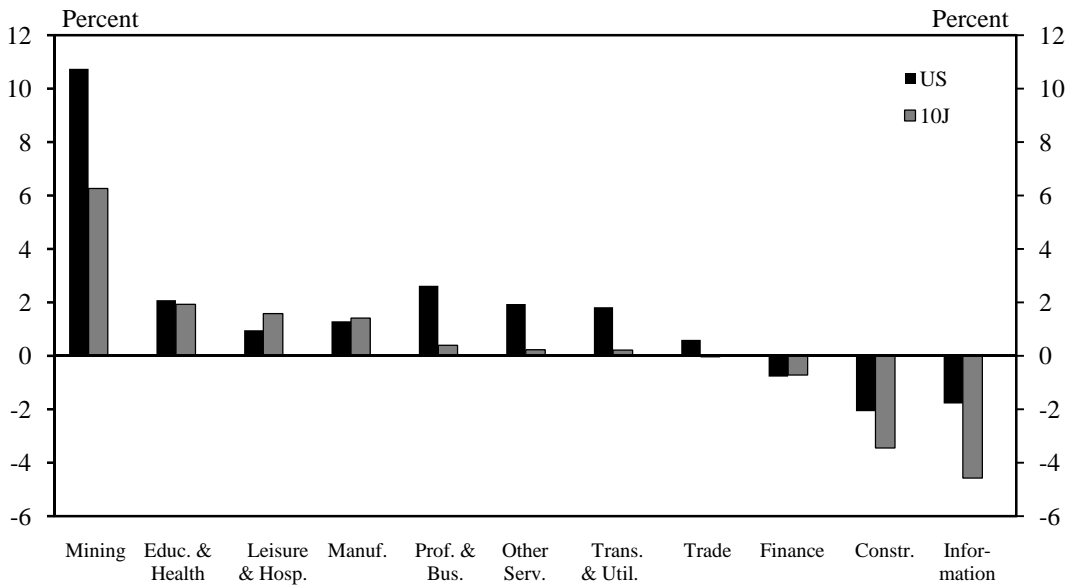
Source: Bureau of Labor Statistics

Chart 7: Unemployment Rate
Seasonally adjusted



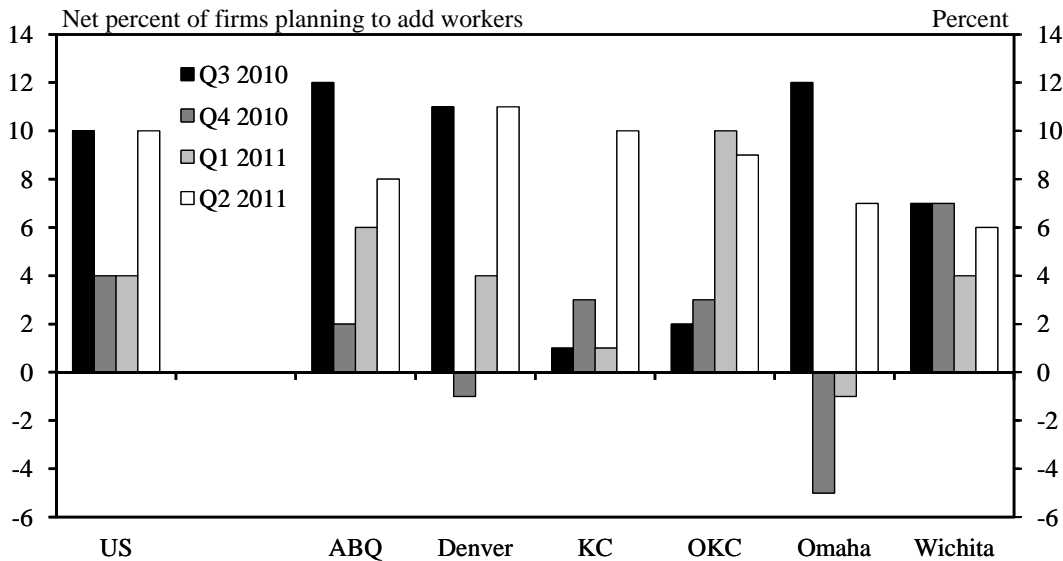
Source: Bureau of Labor Statistics

Chart 8: Employment Growth by Industry
Feb-11 over Feb-10



Source: Bureau of Labor Statistics

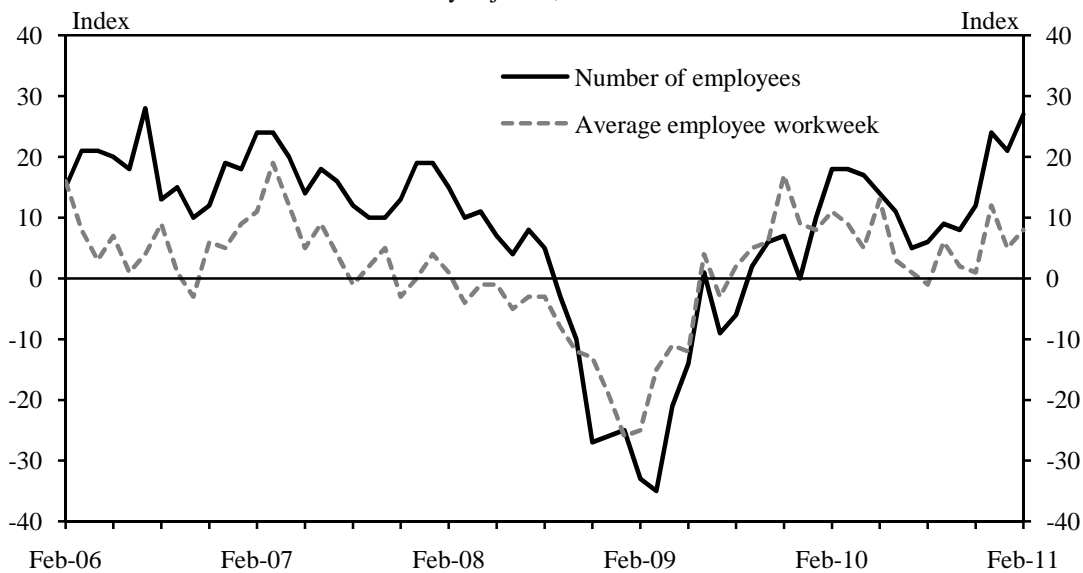
Chart 9: Hiring Expectations



Source: Manpower Inc.

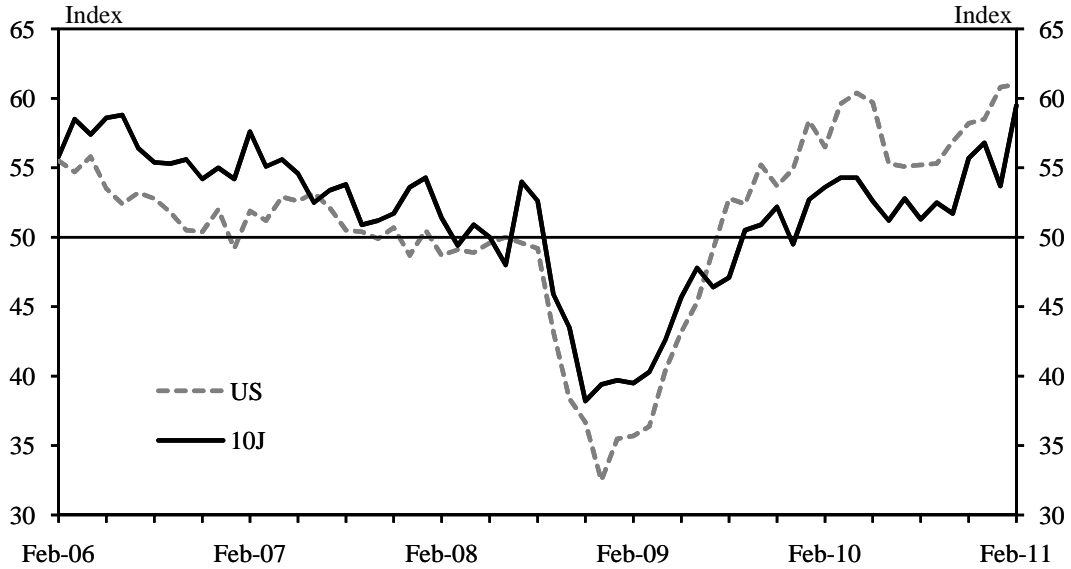
Chart 10: Manufacturing Expected Employment Indexes

Seasonally adjusted; six months ahead



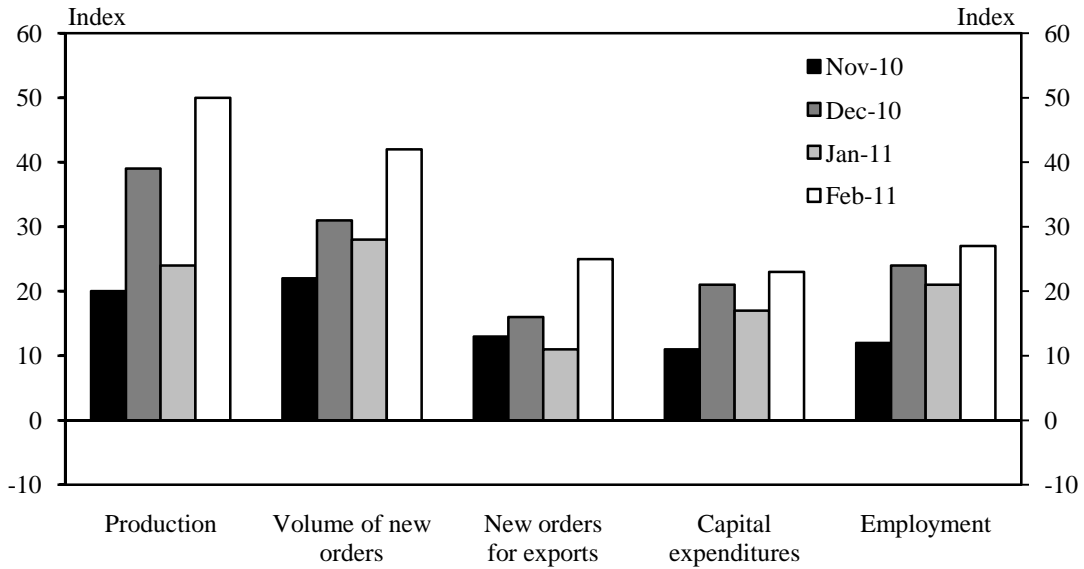
Sources: FRBKC Manufacturing Survey

Chart 11: Manufacturing Activity
Seasonally adjusted; month-over-month



Sources: ISM, FRBKC Manufacturing Survey
Note: 10J index is computed on ISM basis (50 = zero change)

Chart 12: Tenth District Manufacturing Expectations
Seasonally adjusted; six months ahead



Source: FRBKC Manufacturing Survey

Chart 13: Count of Active Drilling Rigs

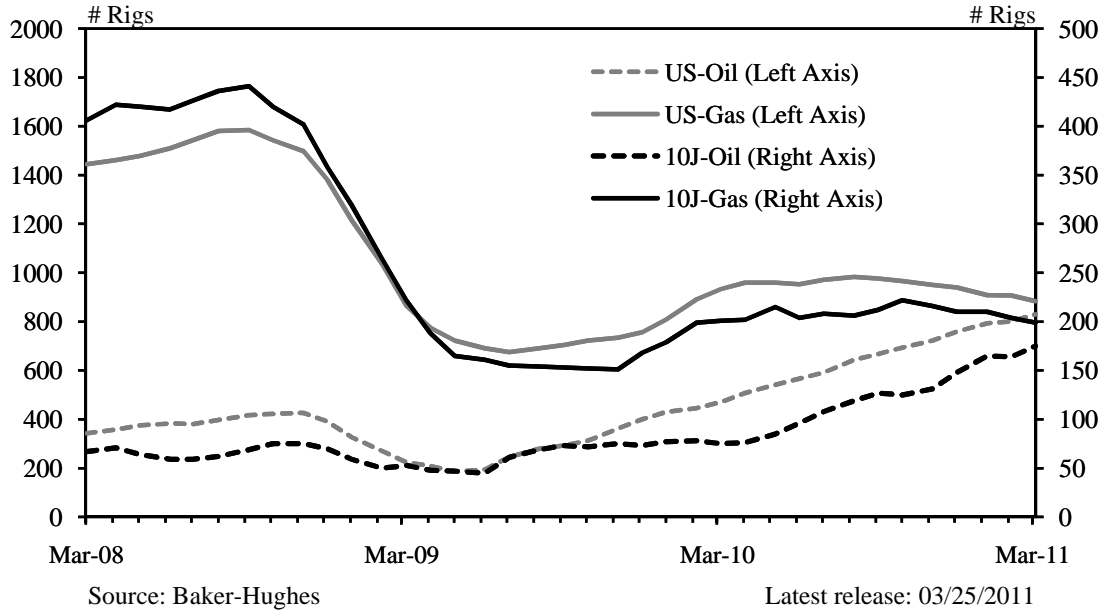


Chart 14: Crop Prices

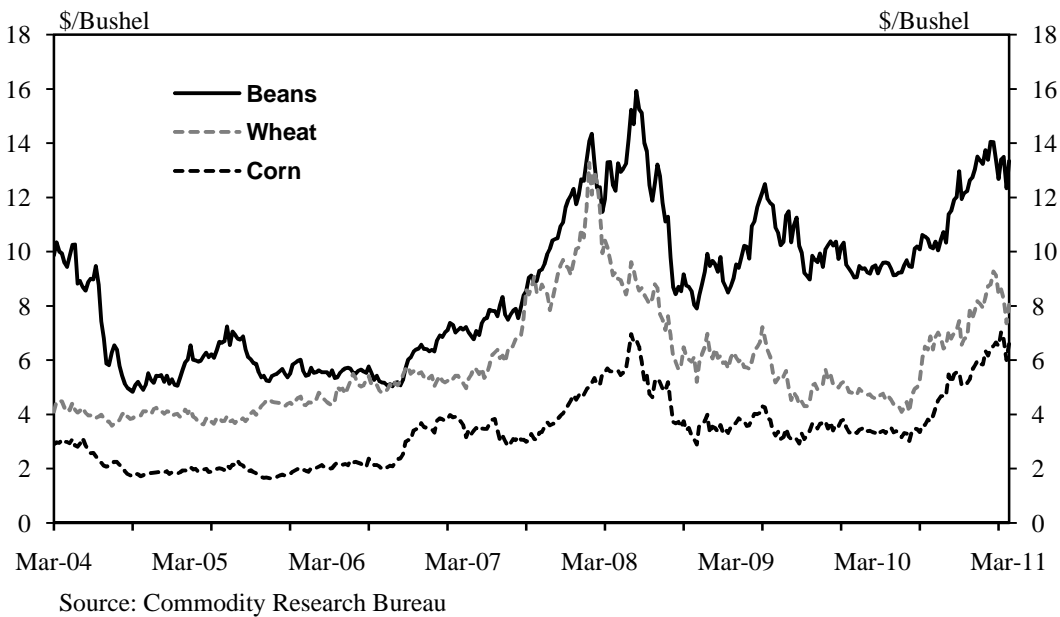
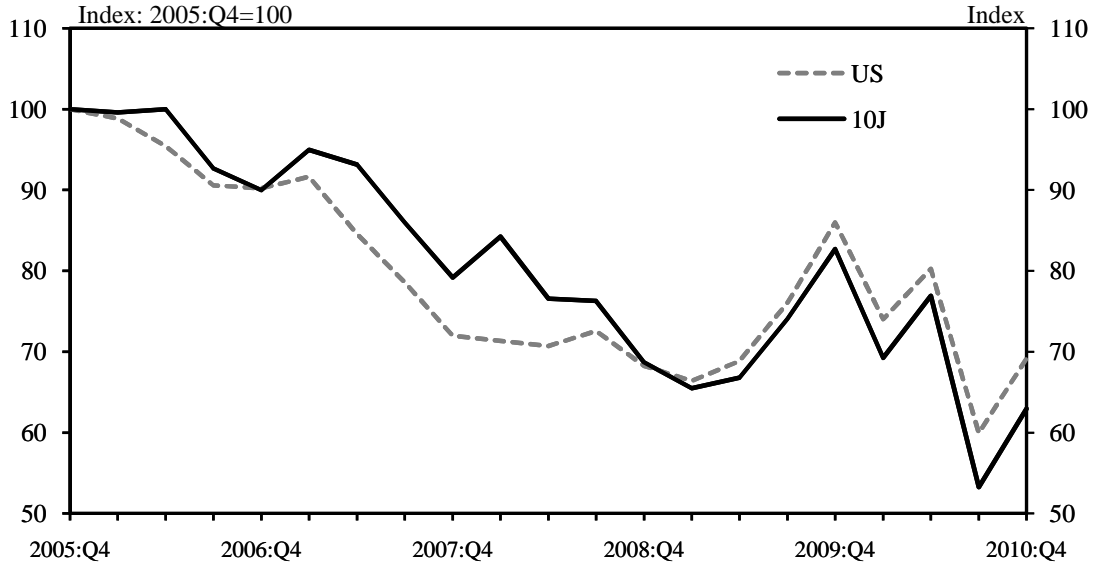
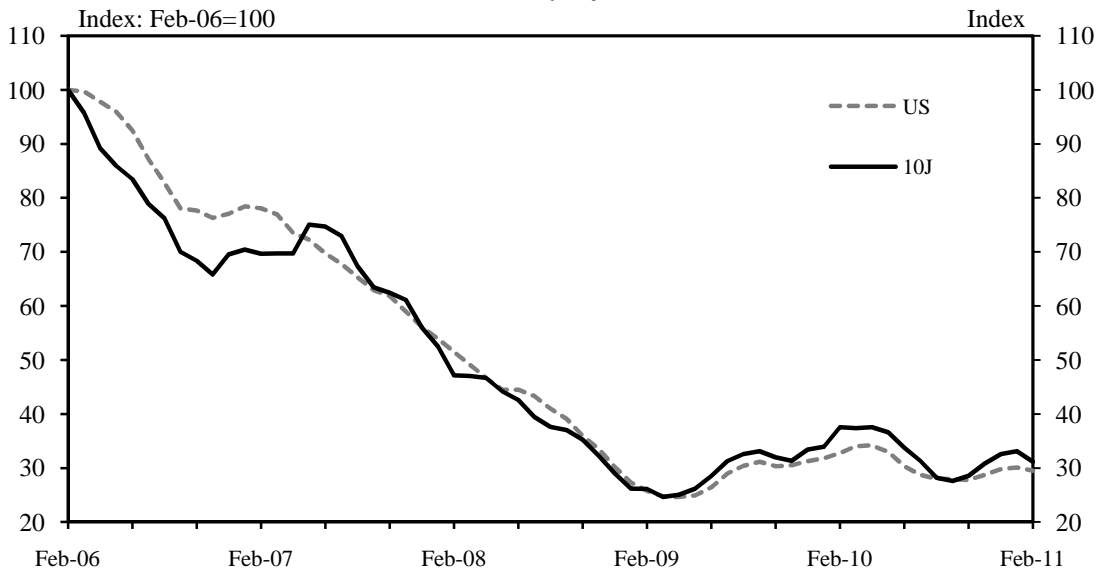


Chart 15: Existing Home Sales
Seasonally adjusted



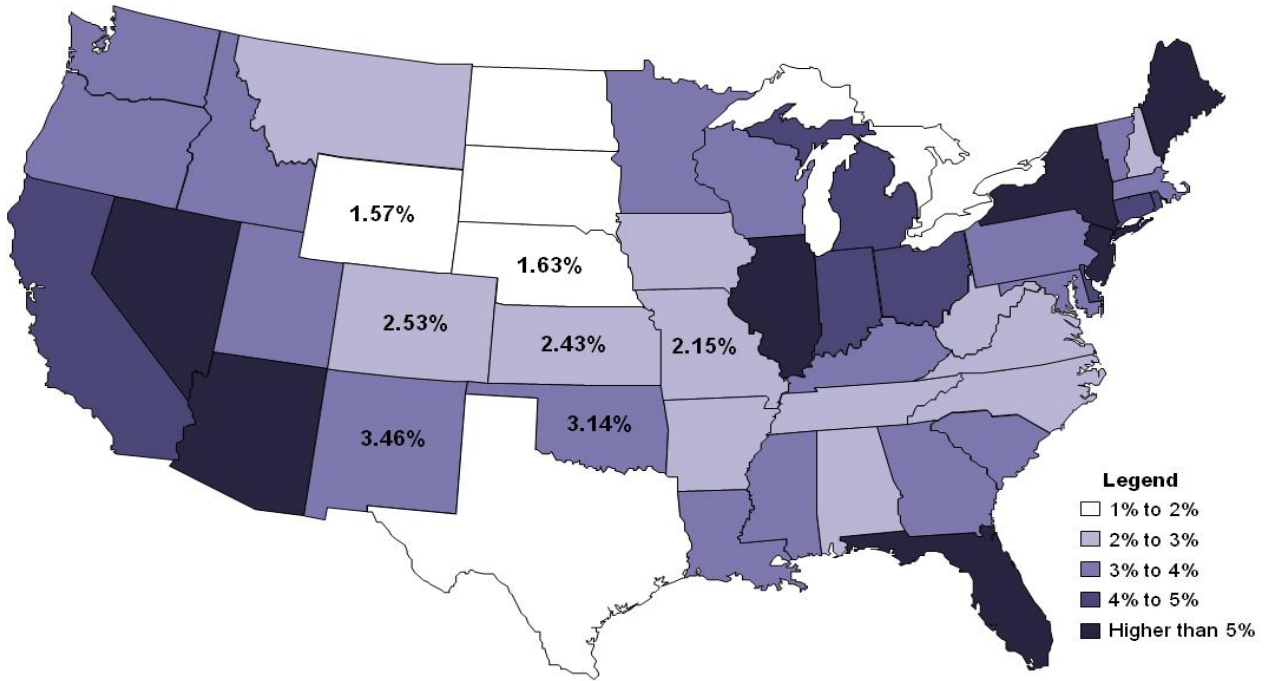
Source: NAR

Chart 16: Value of Residential Construction Contracts
Seasonally adjusted



Source: FW Dodge

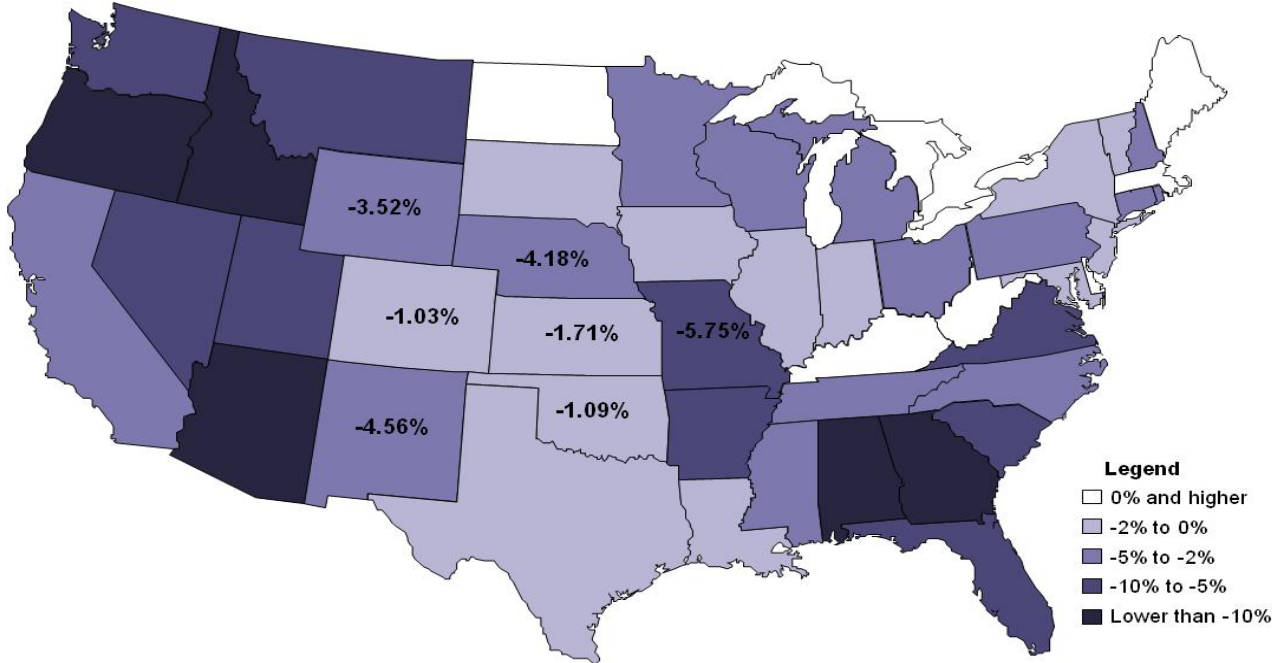
Chart 17: Foreclosure Rate, 4Q 2010



Source: MBA

Chart 18: Home Price Appreciation, 4Q 2010

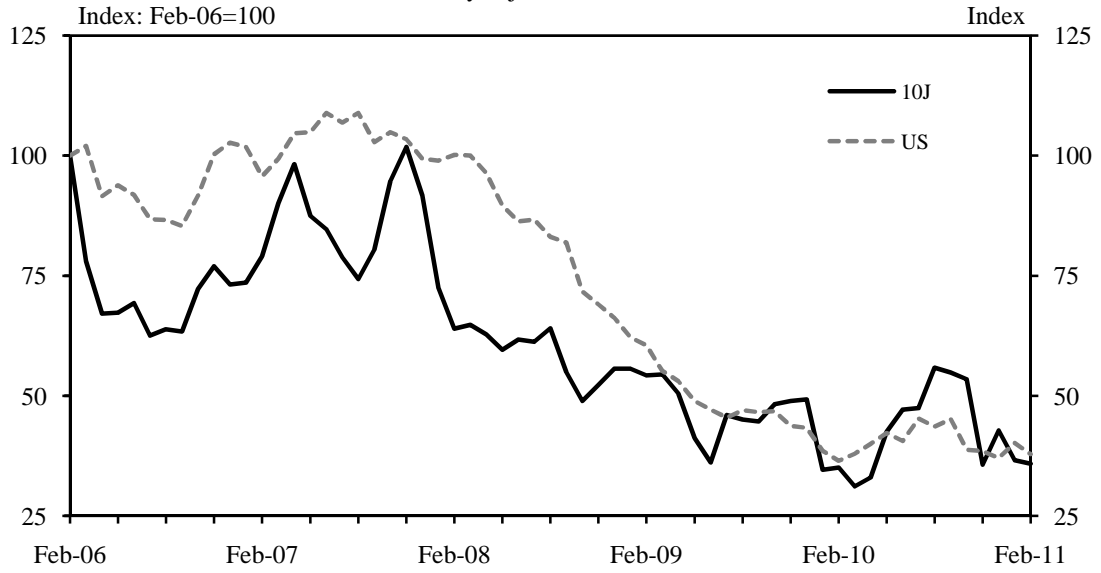
Year-over-year



Source: FHFA

Chart 19: Value of Commercial Construction Contracts

Seasonally adjusted, 3-mo. mov. av.



Source: F.W. Dodge Inc.