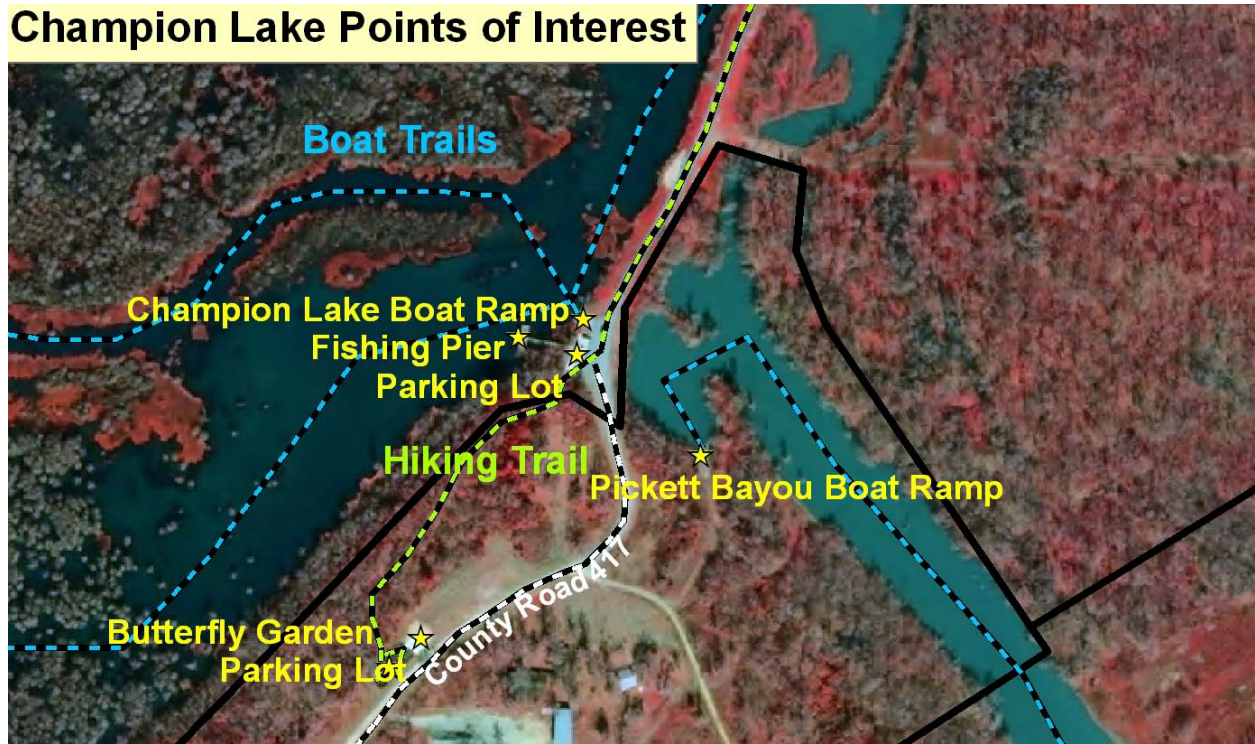
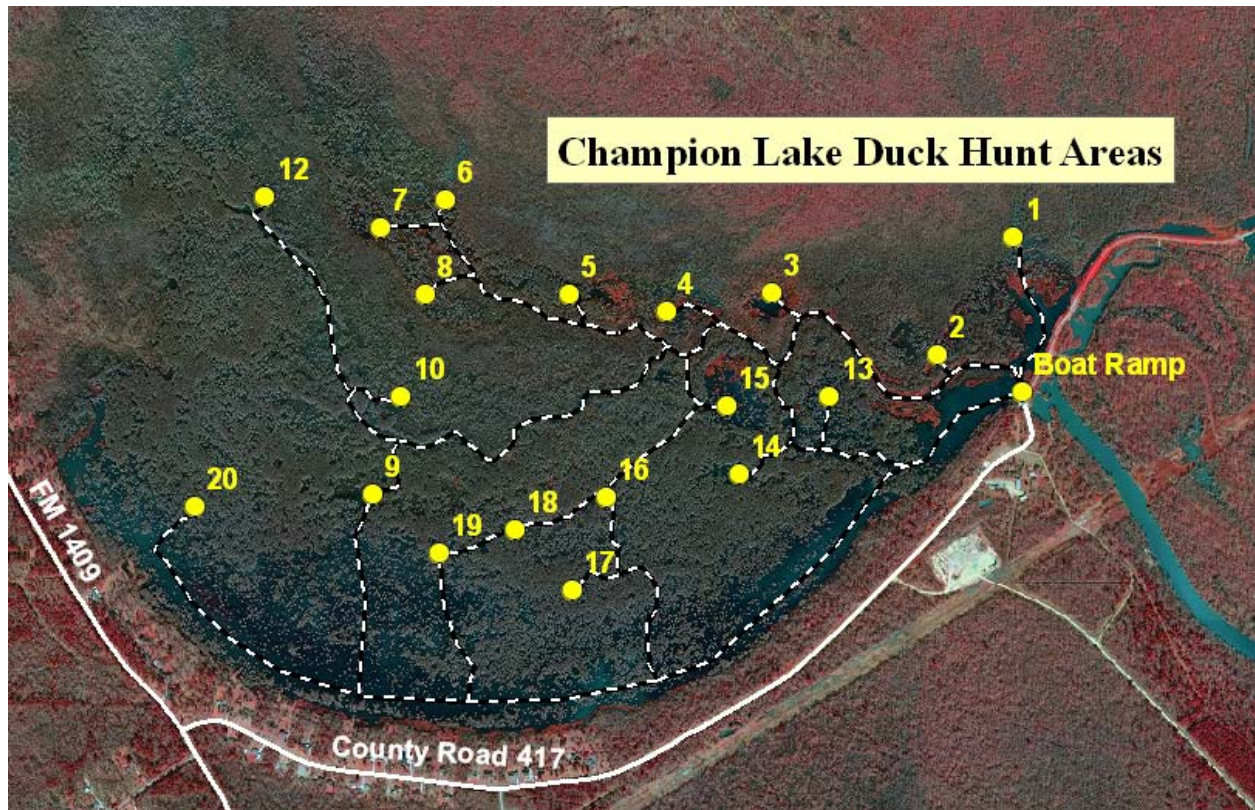


Champion Lake Public Use Area Map and Directions

Champion Lake Points of Interest



Champion Lake Duck Hunt Areas



From Houston:

- Take I-10 East, exit FM 3180, go North on 3180 (Eagle Dr) for 3 miles to FM 565, turn right on FM 565 and go 2.5 miles to FM 1409, turn left on FM 1409 for 3 miles to CR 417. Turn right on CR 417 for 1.8 miles to end at the road.

From Beaumont:

- Take I-10 West, exit FM 565, Old River / Winfree. Go north 2 miles to FM 1409. Turn right on FM 1409 for another 3 miles to CR 417. Turn right on CR 417 for 1.8 miles to the end of the road.

From Hwy 90 in Dayton:

- Take FM 1409 south 10.5 miles to CR 417. Turn left on CR 417 for 1.8 miles to the end of the road.

PLEASE OBEY THE SPEED LIMIT SIGNS WHILE DRIVING THROUGH THE SUBDIVISION ON CR 417.

The U S. Fish and Wildlife does not control the content or policies of the site you are about to visit below. You should always check site policies before providing personal information or reusing content.

(Google Link) http://maps.google.com/maps?f=d&source=s_d&saddr=&daddr=29.920795,-94.799395&hl=en&geocode=&mra=mi&mrsp=0&sz=14&sll=29.919828,-94.800167&sspn=0.035262,0.055017&ie=UTF8&t=h&z=14

**Area Lat/Long
Coordinates
Champion
Lake**

Hunt Area	Latitude	Longitude
Boat Ramp	N 29 55' 16.7"	W 94 47' 57.9"
1	N 29 55' 31.2"	W 94 47' 68.6"
2	N 29 55' 19.7"	W 94 48' 07.1"
3	N 29 55' 24.6"	W 94 48' 25.6"
4	N 29 55' 24.1"	W 94 48' 33.7"
5	N 29 55' 25.0"	W 94 49' 46.2"
6	N 29 55' 32.6"	W 94 48' 59.8"
7	N 29 55' 30.5"	W 94 49' 07.7"
8	N 29 55' 24.8"	W 94 49' 01.3"
9	N 29 55' 05.9"	W 94 49' 06.3"
10	N 29 55' 15.0"	W 94 49' 04.4"
11	Does Not Exist	Does Not Exist
12	N 29 55' 33.0"	W 94 49' 18.9"
13	N 29 55' 15.2"	W 94 48' 18.3"
14	N 29 55' 08.6"	W 94 48' 27.7"
15	N 29 55' 14.5"	W 94 48' 31.0"
16	N 29 55' 06.3"	W 94 48' 42.1"
17	N 29 54' 58.7"	W 94 48' 44.0"
18	N 29 55' 03.2"	W 94 48' 51.5"
19	N 29 55' 00.8"	W 94 48' 59.5"
20	N 29 55' 04.8"	W 94 49' 25.5"