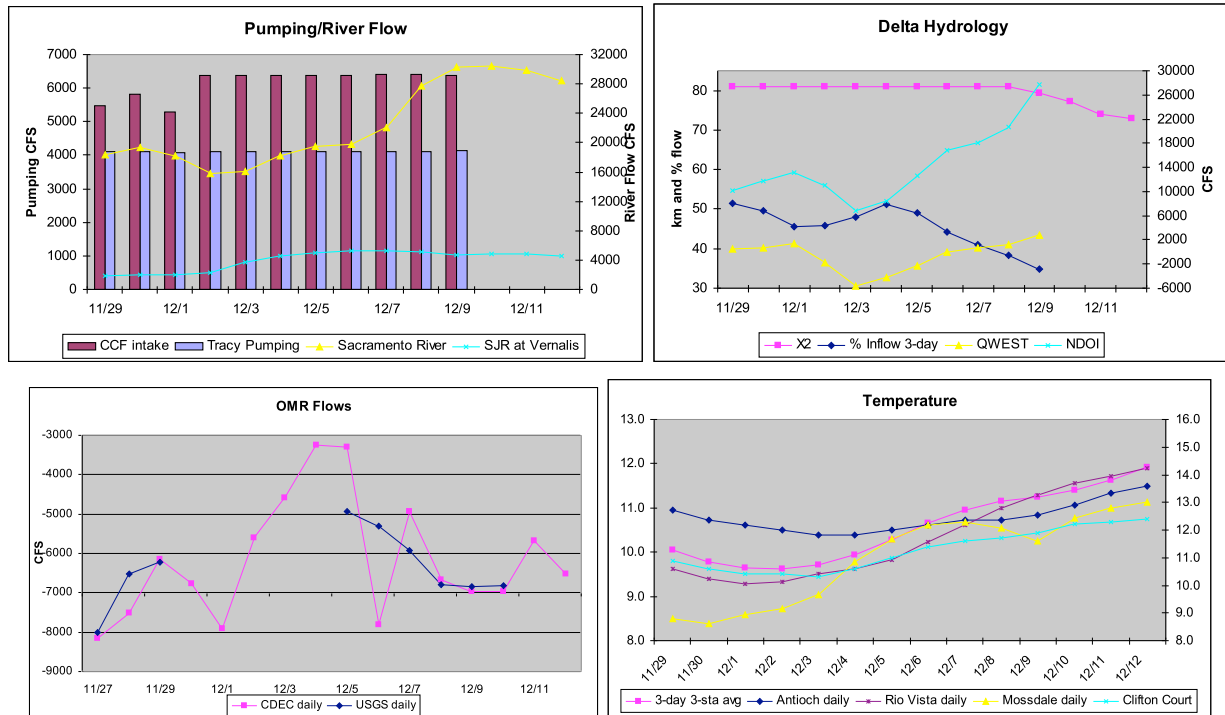


**The Working Group will continue to monitor salvage, survey data, and hydrological conditions and will reconvene weekly as conditions warrant. No recommendation was made.**

1) Current environmental data.

- **Water temperature** for the 3 station average is 11.9°C.
- **OMR** USGS tidally-averaged OMR was -6820 cfs on December 10, 2010. The OMR average estimate from CDEC on December 12, 2010 is -6510 cfs.
- **Flow** Sacramento River inflow is 28396 cfs and San Joaquin 4520 cfs. X<sub>2</sub> is 72.8km. As of December 9, E/I ratio is 34.9%, QWEST is 2716 cfs and NDOI is 27635 cfs. The graphs below show the most recent trends in Delta hydrology and water quality that were evaluated by the Working Group.



2) Delta fish monitoring:

FMWT results have been released for September, October, and November. The index so far is 18, the second lowest on record. The release of the September through December index is anticipated for next week. The 2010 Delta Smelt Recovery Index (based on September and October) is 11. More information on the Recovery Index can be found on the Bay-Delta Office's web site at <http://www.fws.gov/sfbaydelta/> under "hot topics." Results from larval surveys, SKT, and 20mm Surveys are available online at: <http://www.delta.dfg.ca.gov/delta>

### 3) Salvage

No salvage reported for longfin smelt or delta smelt since June 2010.

### 4) Expected Project Operations

Combined CVP/SWP exports are at 10500cfs. Flows on the American and Sacramento Rivers will increase as reservoirs are operated to avoid flood encroachment.

### 5) Particle Tracking Modeling

The Working Group did not request or receive PTM runs for this week.

### 6) Discussion for Recommendation

The Working Group reviewed and discussed all relevant data from fish surveys, Delta monitoring, salvage, and planned Project operations. No recommendation was made.

The period covered by RPA Component 1, protection for pre-spawning adult delta smelt, Action 1(a) (pp 280-282 in the B.O. and Attachment B, pp 329-351), is December 1 through 20. Historic salvage patterns indicate that an entrainment event is unlikely during this period. The Working Group may recommend an action during this period based upon examination of turbidity and salvage data, as well as parameters such as the location of X<sub>2</sub>, apparent abundance, and river flows. The historic likelihood of an entrainment event increases after December 20, the period covered by Component 1, Action 1(b). If turbidity criteria are met or exceeded after December 20, Action 1(b), setting average daily OMR flow no more negative than -2000 cfs for a 14-day period, will begin. Component 1, Action 2 (pp 280-281 and Attachment B, pp 352-356) is implemented following the conclusion of Action 1.

Wet weather is expected for the coming week. With Sacramento River flows already exceeding 25,000 cfs, conditions may be ripe for the first flush of winter precipitation through the Delta.

The Working Group discussed the turbidity criterion stations for RPA Component 1. The turbidity criteria provided in the RPA may not be sensitive enough to detect the occurrence of first flush in the Delta. The three existing stations are Victoria Canal (VCU), Prisoner's Point (PPT), and Holland Tract (HOL). The Working Group agreed to monitor two additional criterion

stations: Old River at San Joaquin River (OSJ) and False River (FAL). Turbidity at three or more of these five stations meeting or exceeding 12 NTU may be a better indicator of first flush conditions. Additionally, the Working Group will review and discuss other turbidity stations in and around the interior Delta, as well as some stations upstream on the San Joaquin River and the Sacramento River. Tidally-influenced turbidity data for each station will be considered in addition to the daily average. Review of this additional data will not change the criteria in the RPA for the implementation of Action 1.

## WEEKLY ADVICE FOR THE DEPARTMENT OF FISH AND GAME FOR LONGFIN SMELT

### **Recommendation for week of December 13 , 2010:**

The Smelt Working Group does not have a longfin smelt recommendation at this time.

### **Basis for recommendation:**

The 2009 State Water Project 2081 for longfin smelt states that advice to the DFG Director shall be based on:

1. Adult Salvage – total adult ( $\geq 80$ mm) longfin smelt salvage (SWP+CVP) for December through February  $> 5$  times the Fall Midwater Trawl longfin smelt annual abundance index.
2. Adult abundance, distribution or other information indicates that OMR flow advice is warranted.

The currently available Fall Midwater Trawl indices (Sep-Nov) sum to 13. Using this partial index to estimate a combined, total salvage level threshold for advice results in a level of 65 (see criterion in #1). No longfin smelt have been detected salvage this water year (as of October 1, 2010), so no advice is warranted based on this criterion.

Fish survey information for longfin smelt consists of December Fall Midwater Trawl and Bay Study surveys. Fall Midwater Trawl collected a single longfin smelt at station 703 in the lower Sacramento River adjacent to Sherman Lake, otherwise no other longfin smelt were collected in the Delta by either survey. However, good numbers of longfin smelt were collected by both surveys in Suisun and San Pablo bays. Longfin smelt are moving back upstream in the estuary, but have not yet reached the Delta in any numbers, so no advice is warranted based on criterion 2.

**Next Meeting:** The SWG is scheduled to meet again via conference call at 10:00 am Monday, December 20 and each Monday thereafter, as conditions warrant.