

Summary Statistics

Table 1. Crude Oil Prices
(Dollars per Barrel)

Year Month	Domestic First Purchase Prices	Average F.O.B. ^a Cost of Crude Oil Imports ^b	Average Landed Cost of Crude Oil Imports ^b	Refiner Acquisition Cost of Crude Oil		
				Domestic	Imported	Composite
1985	24.09	25.84	26.67	26.66	26.99	26.75
1986	12.51	12.52	13.49	14.82	14.00	14.55
1987	15.40	16.69	17.65	17.76	18.13	17.90
1988	12.58	13.25	14.08	14.74	14.56	14.67
1989	15.86	16.89	17.68	17.87	18.08	17.97
1990	20.03	20.37	21.13	22.59	21.76	22.22
1991	16.54	16.89	18.02	19.33	18.70	19.06
1992	15.99	16.77	17.75	18.63	18.20	18.43
1993	14.25	14.71	15.72	16.67	16.14	16.41
1994	13.19	14.18	15.18	15.67	15.51	15.59
1995	14.62	15.69	16.78	17.33	17.14	17.23
1996	18.46	19.32	20.31	20.77	20.64	20.71
1997	17.23	16.94	18.11	19.61	18.53	19.04
1998	10.87	10.76	11.84	13.18	12.04	12.52
1999	15.56	16.47	17.23	17.90	17.26	17.51
2000	26.72	26.27	27.53	29.11	27.70	28.26
2001	21.84	20.46	21.82	24.33	22.00	22.95
2002	22.51	22.63	23.91	24.65	23.71	24.10
2003	27.56	25.86	27.69	29.82	27.71	28.53
2004	36.77	33.75	36.07	38.97	35.90	36.98
2005	50.28	47.60	49.29	52.94	48.86	50.24
2006	59.69	57.03	59.11	62.62	59.02	60.24
2007	66.52	66.36	67.97	69.65	67.04	67.94
2008	94.04	90.32	93.33	98.47	92.77	94.74
2009	56.35	57.78	60.23	59.49	59.17	59.29
2010						
January	72.89	72.96	74.78	76.04	75.07	75.48
February	72.74	71.50	75.01	75.91	73.73	74.58
March	75.77	75.41	77.65	78.52	76.77	77.43
April	78.80	78.27	79.34	82.12	80.03	80.83
May	70.90	69.21	72.00	75.23	71.15	72.66
June	70.77	70.17	72.62	73.93	71.91	72.66
July	71.37	71.01	73.43	74.54	73.25	73.73
August	72.07	71.27	73.63	76.21	73.50	74.58
September	71.23	71.72	74.25	74.87	73.20	73.85
October	76.02	75.52	77.26	78.88	77.02	77.77
November	79.20	79.56	81.56	82.05	80.07	80.85
December	83.98	83.95	86.64	86.48	85.59	85.95
2010	74.71	74.20	76.49	77.96	75.88	76.69
2011						
January	85.66	86.80	89.61	88.73	87.99	88.28
February	86.69	92.07	94.25	89.50	91.72	90.85
March	99.19	104.19	104.80	102.34	102.48	102.43
April	108.80	111.52	112.54	111.96	113.08	112.65
May	102.46	105.92	108.28	107.55	107.99	107.82
June	97.30	104.35	105.19	102.53	105.36	104.23
July	97.82	105.60	106.19	102.67	105.94	104.68
August	89.00	97.72	99.27	95.89	99.01	97.70
September	90.22	100.84	101.03	96.89	101.05	99.39
October	92.28	101.92	102.55	98.34	102.00	100.57
November	100.18	105.79	105.98	106.69	107.67	107.28
December	98.71	103.09	105.62	104.51	106.52	105.69
2011	95.73	101.68	102.99	100.74	102.70	101.93
2012						
January	98.99	103.96	105.27	103.97	105.25	104.70
February	102.05	108.56	109.24	105.93	108.08	107.18
March	105.42	110.72	110.68	110.80	111.00	110.92
April	103.62	R107.17	R107.58	111.26	108.53	109.70
May	95.57	R101.11	R101.86	103.17	103.26	103.23
June	83.59	89.14	90.67	R91.66	R92.59	R92.19
July ^c	NA	NA	NA	E93.11	E94.26	E93.80

NA = Not available.

^a Free on Board. See Glossary.

^b Values reflect the month of acquisition, which can be the month of loading, the month of landing, or sometime between those events. Prices for crude oil can be determined at a time other than the acquisition date. See the Explanatory Notes section.

^c Data are initial estimates calculated using regression models based on past and present values, spot prices, and other internally computed data.

For an explanation of estimation methodology, see the Preface.

^E Estimated data.

^R Revised data.

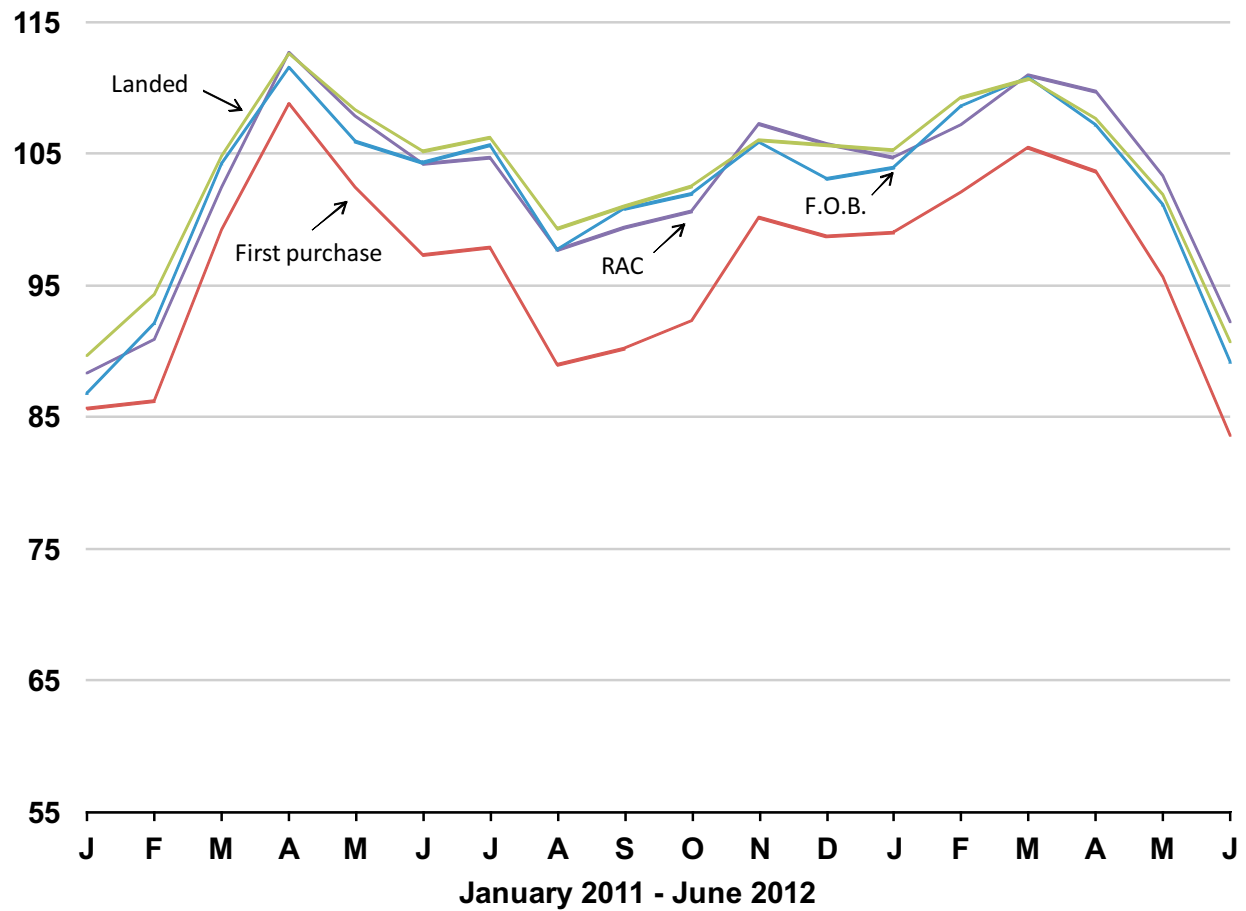
Note: In January 2004, new crude streams were added and selected crude streams were discontinued for California, Gulf Coast, Oklahoma, and Texas.

Notes: Values for Domestic First Purchase and Refiner Acquisition for the current 2 months, and for Average F.O.B. and Average Landed for current 3 months are preliminary. Values shown for previous months are revised. Data are final upon publication in the *Petroleum Marketing Annual*.

Sources: Domestic first purchase prices -- See "Source" from Table 18. Crude oil imports costs -- See "Sources" from Table 21. Refiner acquisition costs -- Energy Information Administration, Form EIA-14, "Refiners' Monthly Cost Report."

Figure 1. Crude Oil Prices

dollars per barrel



Sources: Energy Information Administration, Form EIA-182, "Domestic Crude Oil First Purchase Report"; Form EIA-856, "Monthly Foreign Crude Oil Acquisition Report"; and Form EIA-14, "Refiners' Monthly Cost Report."

Table 1A. Refiner Acquisition Cost of Crude Oil by PAD Districts
(Dollars per Barrel)

Year Month	U.S.			PAD District 1			PAD District 2		
	Domestic	Imported	Composite	Domestic	Imported	Composite	Domestic	Imported	Composite
2004	38.97	35.90	36.98	40.75	38.29	38.34	40.80	35.63	38.38
2005	52.94	48.86	50.24	56.89	53.29	53.35	54.57	46.11	50.75
2006	62.62	59.02	60.24	66.92	63.53	63.60	63.66	55.19	59.70
2007	69.65	67.04	67.94	70.62	72.48	72.44	71.10	62.17	66.90
2008	98.47	92.77	94.74	100.30	96.90	96.97	100.98	88.45	94.93
2009	59.49	59.17	59.29	59.64	61.68	61.63	60.00	57.00	58.64
2010									
January	76.04	75.07	75.48	73.34	77.62	77.49	76.85	72.97	75.16
February	75.91	73.73	74.58	72.61	76.16	76.06	77.45	72.79	75.42
March	78.52	76.77	77.43	76.64	76.30	76.31	79.43	75.31	77.60
April	82.12	80.03	80.83	80.96	84.77	84.69	84.16	77.54	81.27
May	75.23	71.15	72.66	74.25	75.78	75.74	75.41	66.36	71.26
June	73.93	71.91	72.66	73.30	76.23	76.17	74.48	68.47	71.76
July	74.54	73.25	73.73	73.20	78.55	78.42	75.28	69.96	72.89
August	76.21	73.50	74.58	73.72	77.59	77.40	77.86	70.24	74.51
September	74.87	73.20	73.85	74.46	80.11	79.79	76.79	69.28	73.99
October	78.88	77.02	77.77	76.64	84.52	84.21	78.54	68.83	74.41
November	82.05	80.07	80.85	79.80	83.32	83.20	81.55	75.33	78.75
December	86.48	85.59	85.95	83.35	92.56	92.25	86.70	81.66	84.61
2010	77.96	75.88	76.69	75.90	80.03	79.91	78.70	72.30	75.91
2011									
January	88.73	87.99	88.28	86.40	96.83	96.53	88.94	80.48	84.71
February	89.50	91.72	90.85	86.79	108.66	107.84	88.98	77.27	83.09
March	102.34	102.48	102.43	97.35	116.15	115.48	98.29	86.59	92.62
April	111.96	113.08	112.65	100.33	124.88	124.16	108.51	98.28	103.61
May	107.55	107.99	107.82	107.93	117.37	116.94	104.05	96.45	100.60
June	102.53	105.36	104.23	109.89	115.66	115.17	100.54	94.30	97.76
July	102.67	105.94	104.68	96.10	112.09	111.76	99.78	92.09	96.36
August	95.89	99.01	97.70	95.58	108.00	107.46	91.42	81.68	87.01
September	96.89	101.05	99.39	98.48	111.22	110.50	89.80	85.41	87.73
October	98.34	102.00	100.57	87.25	111.08	110.31	90.73	86.36	88.57
November	106.69	107.67	107.28	95.25	112.57	111.98	99.56	94.45	96.89
December	104.51	106.52	105.69	100.44	110.12	109.67	99.65	95.42	97.53
2011	100.74	102.70	101.93	98.88	111.89	111.35	96.82	89.16	93.15
2012									
January	103.97	105.25	104.70	101.56	111.68	111.04	100.84	94.11	97.30
February	105.93	108.08	107.18	107.59	120.70	120.04	102.61	91.74	97.06
March	110.80	111.00	110.92	114.34	125.16	124.40	102.96	85.51	93.56
April	111.26	108.53	109.70	112.07	120.00	119.39	103.05	82.84	93.19
May	103.17	103.26	103.23	R102.85	109.95	R109.55	R95.76	80.98	R88.84
June	R91.66	R92.59	R92.19	93.04	100.04	99.43	86.39	76.24	81.54

See footnotes at end of table.

Table 1A. Refiner Acquisition Cost of Crude Oil by PAD Districts

(Dollars per Barrel) — Continued

Year Month	PAD District 3			PAD District 4			PAD District 5		
	Domestic	Imported	Composite	Domestic	Imported	Composite	Domestic	Imported	Composite
2004	39.28	34.79	35.87	39.98	35.93	37.81	36.81	38.20	37.30
2005	53.17	47.77	48.99	53.50	48.54	50.89	50.61	50.77	50.67
2006	63.17	58.34	59.54	60.80	56.17	58.45	60.90	61.44	61.15
2007	70.58	66.34	67.48	65.79	60.81	63.43	67.47	69.42	68.34
2008	100.39	91.86	94.11	91.49	88.56	90.12	94.53	96.30	95.35
2009	60.61	59.21	59.64	56.30	56.53	56.39	57.79	60.07	58.78
2010									
January	76.11	74.94	75.34	73.68	72.62	73.34	75.68	76.60	76.06
February	76.54	73.25	74.30	71.14	72.83	71.87	73.71	75.45	74.54
March	78.70	76.55	77.20	75.73	76.57	76.07	77.65	80.43	78.88
April	82.04	79.02	79.96	79.06	78.51	78.82	80.02	82.63	81.26
May	76.67	70.74	72.47	68.17	66.34	67.42	74.25	74.47	74.35
June	75.24	71.57	72.71	69.80	66.85	68.55	71.75	74.10	72.91
July	75.48	72.75	73.57	70.86	68.49	69.88	72.67	75.47	73.97
August	76.36	73.38	74.35	71.04	68.52	69.96	74.53	75.93	75.23
September	75.54	72.83	73.67	69.77	64.79	67.50	71.97	74.84	73.40
October	79.56	77.86	78.44	74.84	63.10	69.89	78.95	79.58	79.25
November	83.23	80.33	81.32	78.06	73.59	76.05	81.33	82.64	81.94
December	87.42	85.15	85.91	82.74	77.88	80.64	85.24	88.51	86.60
2010	78.73	75.68	76.65	73.65	70.77	72.45	76.56	78.23	77.34
2011									
January	89.93	88.34	88.88	84.71	78.93	82.50	87.25	89.06	88.08
February	90.48	94.01	92.79	81.62	73.15	77.97	90.15	93.16	91.66
March	103.54	104.66	104.29	94.68	81.44	88.93	106.55	105.12	105.85
April	114.02	114.92	114.63	103.86	93.32	99.44	114.37	116.88	115.54
May	109.83	108.67	109.05	95.86	93.13	94.78	111.07	111.95	111.54
June	103.86	106.69	105.72	91.65	88.36	90.28	105.00	106.71	105.85
July	106.05	108.27	107.53	90.99	86.91	89.58	104.02	108.80	106.53
August	98.59	102.50	100.95	80.52	76.74	79.26	100.79	99.75	100.29
September	99.28	104.06	102.39	83.65	77.87	81.51	104.62	102.38	103.54
October	102.63	105.16	104.28	82.19	81.13	81.78	103.56	104.05	103.79
November	110.35	110.37	110.36	92.28	90.44	91.54	111.43	115.89	113.37
December	107.93	108.63	108.36	92.76	92.65	92.72	105.91	113.58	109.42
2011	103.19	104.83	104.25	89.36	84.82	87.57	103.85	105.68	104.73
2012									
January	105.70	108.18	107.19	94.57	92.18	93.52	106.39	109.88	107.95
February	108.69	111.86	110.61	94.05	90.41	92.36	106.50	110.75	108.51
March	114.40	117.98	116.65	98.32	83.67	94.19	116.98	115.65	116.35
April	116.30	114.82	115.39	91.06	80.65	87.67	115.27	114.19	114.74
May	108.42	108.40	108.40	80.13	82.82	80.95	108.67	110.05	109.35
June	94.99	96.23	95.73	76.48	75.49	76.12	94.93	97.52	96.27

R Revised data.

Notes: U.S. is defined as the 50 states, the District of Columbia, Puerto Rico, the Virgin Islands, and all American territories and possessions. Values reflect the PAD District in which the crude oil is intended to be refined.

Notes: Values shown for the current month are preliminary. Values shown for previous months are revised. Data are final upon publication in the *Petroleum Marketing Annual*.

Source: Form EIA-14, "Refiners' Monthly Cost Report," January 2004 to present.

Table 2. U.S. Refiner Prices of Petroleum Products to End Users

(Dollars per Gallon Excluding Taxes)

Year Month	Motor Gasoline	Aviation Gasoline	Kerosene- Type Jet Fuel	Propane (Consumer Grade)	Kerosene	No. 1 Distillate	No. 2 Distillate			No. 4 Fuel ^a	Residual Fuel Oil
							No. 2 Diesel Fuel	No. 2 Fuel Oil	Average		
1985	0.912	1.201	0.796	0.717	1.030	0.880	0.789	0.849	0.799	0.773	0.610
1986	0.624	1.011	0.529	0.745	0.790	0.620	0.478	0.560	0.491	0.489	0.343
1987	0.669	0.907	0.543	0.701	0.770	0.604	0.551	0.581	0.556	0.513	0.423
1988	0.673	0.891	0.513	0.714	0.738	0.564	0.500	0.544	0.507	0.461	0.334
1989	0.756	0.995	0.592	0.615	0.709	0.661	0.585	0.587	0.585	0.512	0.385
1990	0.883	1.120	0.766	0.745	0.923	0.819	0.725	0.734	0.726	0.622	0.444
1991	0.797	1.047	0.652	0.730	0.838	0.740	0.648	0.665	0.650	0.580	0.340
1992	0.787	1.027	0.610	0.643	0.788	0.666	0.619	0.627	0.620	0.526	0.336
1993	0.759	0.990	0.580	0.673	0.754	0.666	0.602	0.602	0.602	0.501	0.337
1994	0.738	0.957	0.534	0.530	0.660	0.640	0.554	0.572	0.556	0.501	0.352
1995	0.765	1.005	0.540	0.492	0.589	0.620	0.560	0.562	0.560	0.505	0.392
1996	0.847	1.116	0.651	0.605	0.740	0.726	0.681	0.673	0.680	0.603	0.455
1997	0.839	1.128	0.613	0.552	0.745	0.689	0.642	0.636	0.642	0.565	0.423
1998	0.673	0.975	0.452	0.405	0.501	0.551	0.494	0.482	0.492	0.428	0.305
1999	0.781	1.059	0.543	0.458	0.605	0.621	0.584	0.558	0.580	0.474	0.374
2000	1.106	1.306	0.899	0.603	1.123	0.988	0.935	0.927	0.934	0.769	0.602
2001	1.032	1.323	0.775	0.506	1.045	0.902	0.842	0.829	0.840	0.679	0.531
2002	0.947	1.288	0.721	0.419	0.990	0.828	0.762	0.737	0.759	0.657	0.569
2003	1.156	1.493	0.872	0.577	1.224	1.017	0.944	0.933	0.942	0.856	0.698
2004	1.435	1.819	1.207	0.839	1.160	1.262	1.243	1.173	1.235	1.017	0.739
2005	1.829	2.231	1.735	1.089	1.957	1.832	1.786	1.705	1.777	W	1.048
2006	2.128	2.682	1.998	1.358	2.244	2.137	2.096	1.982	2.091	W	1.218
2007	2.345	2.849	2.165	1.489	2.263	2.286	2.267	2.241	2.266	W	1.374
2008	2.775	3.273	3.052	1.892	3.283	2.983	3.150	2.986	3.143	W	1.964
2009	1.888	2.442	1.704	1.220	2.675	2.141	1.834	1.962	1.840	W	1.341
2010											
January	2.240	2.914	2.129	1.913	2.986	2.501	2.192	2.369	2.203	W	1.725
February	2.173	2.855	2.018	2.009	2.974	2.484	2.144	2.310	2.152	W	1.681
March	2.301	3.103	2.144	NA	2.978	2.626	2.265	2.425	2.269	W	1.692
April	2.370	3.201	2.272	1.326	3.040	2.805	2.410	2.527	2.412	W	1.718
May	2.353	3.129	2.199	1.264	2.938	NA	2.343	2.487	2.345	W	1.686
June	2.251	2.981	2.105	1.204	2.965	2.737	2.284	2.393	2.285	W	1.636
July	2.247	3.028	2.103	1.162	NA	2.491	2.212	2.246	2.213	W	1.639
August	2.250	2.967	2.158	1.211	2.772	2.705	2.260	2.379	2.262	W	1.676
September	2.219	2.893	2.148	1.283	2.898	2.619	2.269	2.346	2.270	W	1.645
October	2.319	3.000	2.298	1.425	3.058	2.862	2.389	2.580	2.392	W	1.721
November	2.378	3.095	2.374	NA	3.130	2.909	2.457	2.641	2.462	W	1.804
December	2.514	3.218	2.484	1.863	3.276	2.959	2.554	2.749	2.564	W	1.931
2010	2.301	3.028	2.201	1.481	3.063	2.705	2.314	2.462	2.318	W	1.713
2011											
January	2.615	3.323	2.623	NA	3.358	3.020	2.681	2.889	2.694	W	2.013
February	2.712	3.374	2.818	1.823	3.506	3.219	2.867	3.020	2.875	W	2.150
March	3.072	3.767	3.161	1.763	3.697	3.553	3.189	3.255	3.191	W	2.403
April	3.340	4.132	3.306	NA	3.796	3.809	3.370	3.430	3.371	W	2.475
May	3.419	4.091	3.220	1.648	3.894	3.596	3.231	3.337	3.232	W	2.440
June	3.184	3.913	3.138	1.681	3.802	NA	3.183	3.193	3.183	W	2.473
July	3.172	4.027	3.118	1.620	3.812	3.437	3.214	3.294	3.215	W	2.508
August	3.134	3.920	3.057	1.650	3.851	3.562	3.143	3.251	3.144	W	2.512
September	3.090	3.915	3.059	1.702	3.873	NA	3.127	3.288	3.129	W	2.473
October	2.980	3.697	2.987	1.706	3.823	3.679	3.108	3.346	3.113	W	2.454
November	2.922	3.620	3.124	1.773	3.892	3.635	3.225	3.403	3.231	W	2.521
December	2.808	W	2.963	1.691	3.824	3.428	3.024	3.255	3.032	W	2.509
2011	3.050	3.803	3.054	1.709	3.616	3.467	3.117	3.193	3.119	W	2.401
2012											
January	2.914	3.732	3.087	1.655	3.848	3.391	3.093	3.345	3.106	W	2.620
February	3.087	W	3.206	1.518	3.874	3.559	3.224	3.495	3.235	W	2.705
March	3.389	4.133	3.337	1.470	3.919	3.780	3.378	3.522	3.383	W	2.784
April	3.405	4.313	3.283	1.352	3.916	3.794	3.342	3.509	3.345	W	2.731
May	3.289	W	R3.100	1.080	3.741	3.547	R3.163	R3.258	3.165	W	2.784
June	3.060	W	2.766	0.902	3.753	3.454	2.912	2.992	2.913	W	2.476

NA = Not available.

W = Withheld to avoid disclosure of individual company data.

^a Includes No. 4 fuel oil and No. 4 diesel fuel.

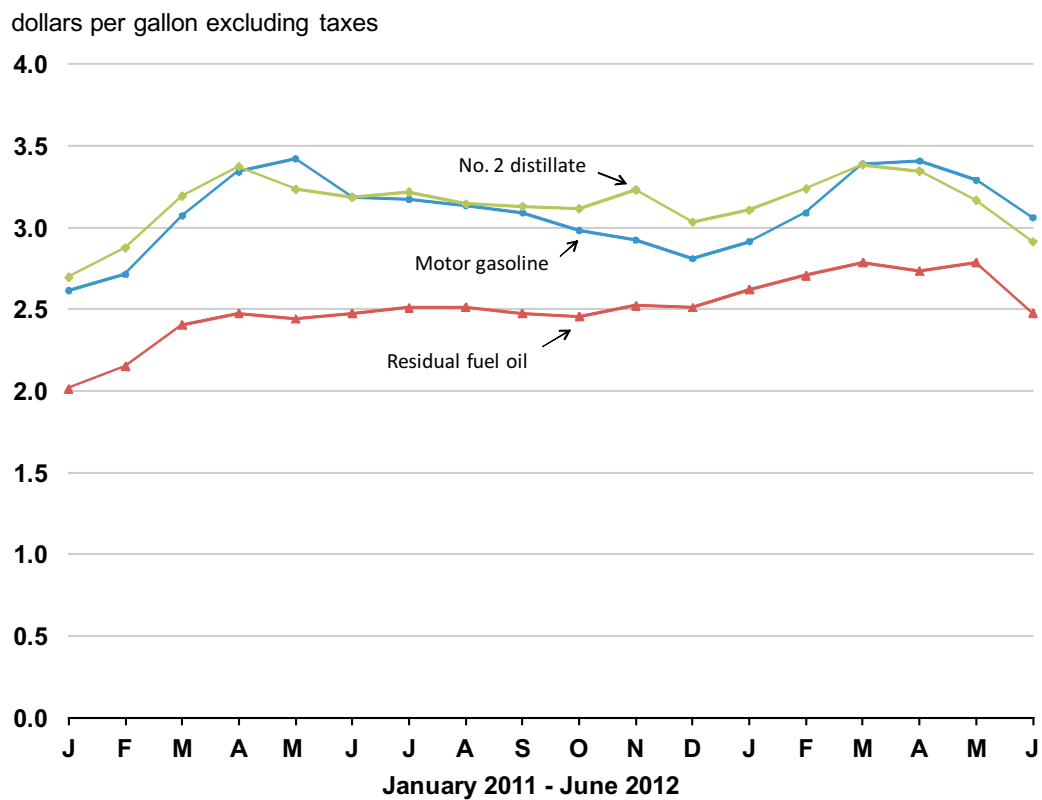
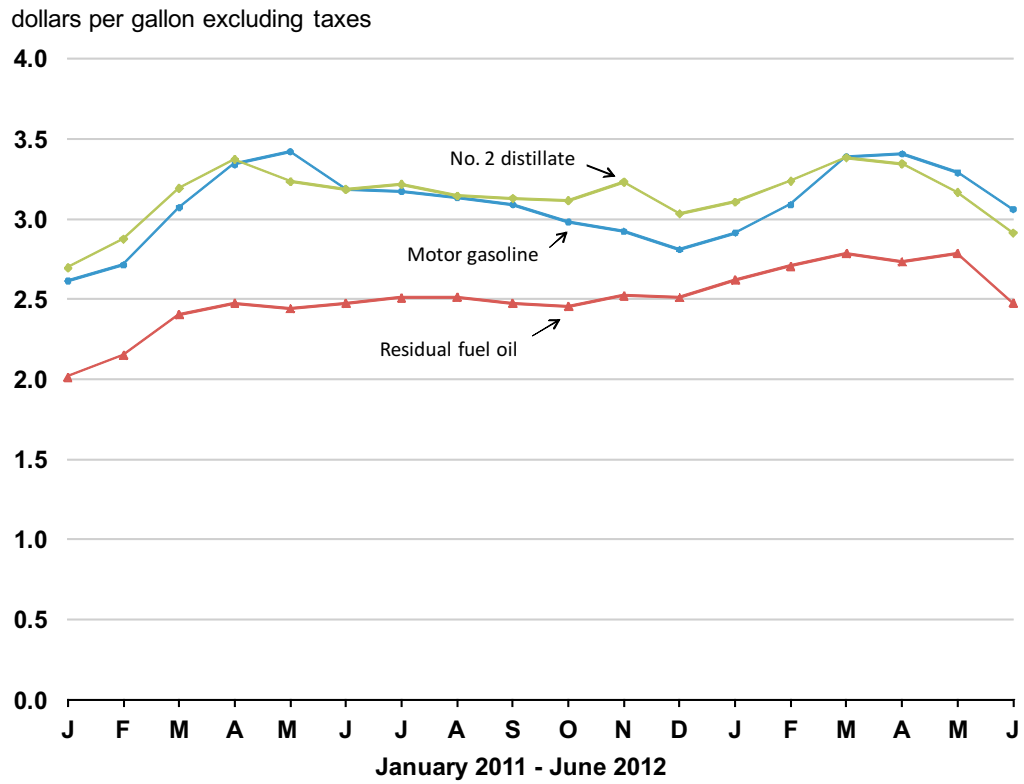
^R Revised data.

Note: Motor gasoline averages and totals prior to October 1993 include leaded gasoline.

Notes: Values shown for the current month are preliminary. Values shown for previous months are revised. Data are final upon publication in the *Petroleum Marketing Annual*.

Source: Energy Information Administration Form EIA-782A, "Refiners'/Gas Plant Operators' Monthly Petroleum Product Sales Report."

Figure 2. U.S. Refiner Retail Petroleum Product Prices



Source: Energy Information Administration, Form EIA-782A, "Refiners' /Gas Plant Operators' Monthly Petroleum Product Sales Report."

Table 3. U.S. Refiner Volumes of Petroleum Products to End Users
(Million Gallons per Day)

Year Month	Motor Gasoline	Aviation Gasoline	Kerosene- Type Jet Fuel	Propane (Consumer Grade)	Kerosene	No. 1 Distillate	No. 2 Distillate			No. 4 Fuel ^a	Residual Fuel Oil
							No. 2 Diesel Fuel	No. 2 Fuel Oil	Total		
1985	57.5	0.3	34.6	3.7	0.3	0.5	25.0	5.0	29.9	0.5	25.2
1986	61.2	0.3	35.1	3.4	0.3	0.4	24.4	4.4	28.8	0.7	31.6
1987	61.0	0.2	36.8	3.8	0.3	0.4	24.1	4.5	28.5	0.8	29.0
1988	61.0	0.2	38.2	4.3	0.3	0.4	24.5	4.6	29.1	1.1	30.2
1989	61.2	0.2	40.1	2.8	0.3	0.5	24.3	4.5	28.8	0.9	30.4
1990	60.3	0.2	39.9	2.7	0.2	0.5	22.2	3.6	25.9	0.8	25.9
1991	61.2	0.2	38.5	3.1	0.2	0.5	21.1	3.2	24.4	0.7	24.0
1992	59.0	0.2	39.8	3.8	0.2	0.5	21.5	3.1	24.6	0.6	22.4
1993	57.2	0.2	41.7	3.5	0.2	0.4	20.8	2.9	23.8	0.6	17.2
1994	55.0	0.2	45.2	2.2	0.4	0.4	21.3	3.4	24.6	0.8	13.5
1995	55.9	0.2	45.7	3.2	0.6	0.3	21.6	3.3	24.9	0.5	11.6
1996	57.5	0.2	48.7	3.1	0.4	0.3	21.9	3.1	25.0	0.4	12.9
1997	61.1	0.2	49.7	3.2	0.3	0.4	22.0	3.0	25.0	0.3	13.4
1998	63.3	0.2	48.9	3.1	0.4	0.4	21.1	3.2	24.3	0.3	14.4
1999	62.0	0.1	47.0	3.6	0.2	0.3	21.1	3.0	24.1	0.3	13.9
2000	60.9	0.2	49.3	2.9	0.2	0.3	22.6	2.8	25.4	0.3	13.1
2001	62.0	0.1	49.7	3.6	0.2	0.3	22.9	3.0	26.0	0.4	14.8
2002	63.6	0.1	49.1	2.6	0.1	0.3	19.6	3.0	22.6	0.4	10.4
2003	63.8	0.1	44.0	2.5	0.1	0.3	16.7	2.7	19.5	0.3	10.7
2004	58.4	0.1	46.4	2.7	0.5	0.2	16.9	2.4	19.3	0.3	10.2
2005	59.0	0.1	45.2	3.2	0.1	0.3	17.0	2.1	19.1	W	10.4
2006	60.0	0.1	42.1	2.7	0.1	0.2	24.2	1.2	25.4	W	10.4
2007	57.7	0.1	40.1	3.3	0.1	0.2	23.6	0.8	24.3	W	10.9
2008	55.1	0.1	39.9	2.7	NA	0.1	19.9	0.9	20.8	W	8.4
2009	49.8	0.2	38.0	3.7	NA	0.1	16.9	0.9	17.8	W	8.5
2010											
January	44.0	0.1	33.4	4.2	0.1	0.2	15.2	1.0	16.2	W	8.3
February	44.2	0.1	34.0	3.2	0.1	0.2	16.2	0.8	17.1	W	8.9
March	45.5	0.1	36.2	3.8	0.0	0.2	17.3	0.5	17.8	W	7.7
April	46.2	0.1	35.2	4.0	0.0	0.1	17.6	0.3	17.9	W	6.8
May	46.0	0.1	36.6	3.3	0.0	0.0	17.2	0.2	17.5	W	7.2
June	46.8	0.1	36.6	3.9	0.0	0.1	17.9	0.2	18.2	W	7.1
July	45.8	0.1	35.9	3.5	0.0	0.0	13.0	0.2	13.2	W	7.9
August	45.1	0.2	36.1	3.8	0.0	0.0	13.4	0.2	13.7	W	6.8
September	43.9	0.1	33.5	4.3	0.0	0.1	14.6	0.2	14.8	W	7.7
October	43.6	0.1	32.9	4.9	0.0	0.1	13.8	0.3	14.1	W	7.6
November	42.9	0.1	33.6	3.6	0.0	0.2	14.2	0.4	14.7	W	7.3
December	42.4	0.1	33.3	4.0	0.1	0.2	13.6	0.7	14.3	W	7.6
2010	44.7	0.1	34.8	3.9	0.0	0.1	15.3	0.4	15.8	W	7.6
2011											
January	40.3	0.1	31.5	5.6	0.1	0.2	12.8	0.8	13.6	W	7.6
February	40.9	0.1	31.4	4.6	0.1	0.2	13.4	0.7	14.1	W	7.0
March	41.6	0.1	34.5	3.7	0.0	0.1	14.5	0.5	15.1	W	7.5
April	41.6	0.1	34.4	3.7	0.0	0.1	13.3	0.4	13.6	W	6.5
May	41.2	0.1	34.4	3.9	0.0	0.0	14.1	0.2	14.3	W	6.5
June	42.5	0.1	35.9	3.3	0.0	0.0	14.1	0.3	14.4	W	5.7
July	42.4	0.1	33.8	4.7	0.0	0.0	12.6	0.2	12.8	W	5.9
August	42.4	0.1	35.0	4.7	0.0	0.0	13.5	0.2	13.7	W	5.1
September	42.0	0.1	33.8	4.5	0.0	0.1	13.7	0.2	13.9	W	6.1
October	32.0	0.1	31.8	4.6	0.0	0.1	12.8	0.3	13.1	W	6.3
November	31.0	0.1	30.9	4.4	0.0	0.2	13.3	0.4	13.7	W	6.4
December	30.4	W	31.7	5.9	0.1	0.2	12.9	0.5	13.4	W	6.5
2011	39.0	0.1	33.3	4.5	0.0	0.1	13.4	0.4	13.8	W	6.4
2012											
January	28.4	0.1	29.8	6.0	0.1	0.2	12.2	0.7	12.9	W	6.2
February	29.5	W	29.9	6.5	0.0	0.2	12.2	0.5	12.7	W	5.7
March	29.5	0.1	32.1	5.7	0.0	0.1	12.0	0.4	12.3	W	6.0
April	29.7	0.1	33.3	4.9	0.0	0.1	12.6	0.2	12.8	W	6.2
May	30.3	W	32.7	5.7	0.0	0.1	^R 12.6	0.2	^R 12.8	W	4.6
June	31.5	W	34.4	5.9	0.0	0.0	12.0	0.2	12.1	W	5.8

NA = Not available.

W = Withheld to avoid disclosure of individual company data.

^a Includes No. 4 fuel oil and No. 4 diesel fuel.

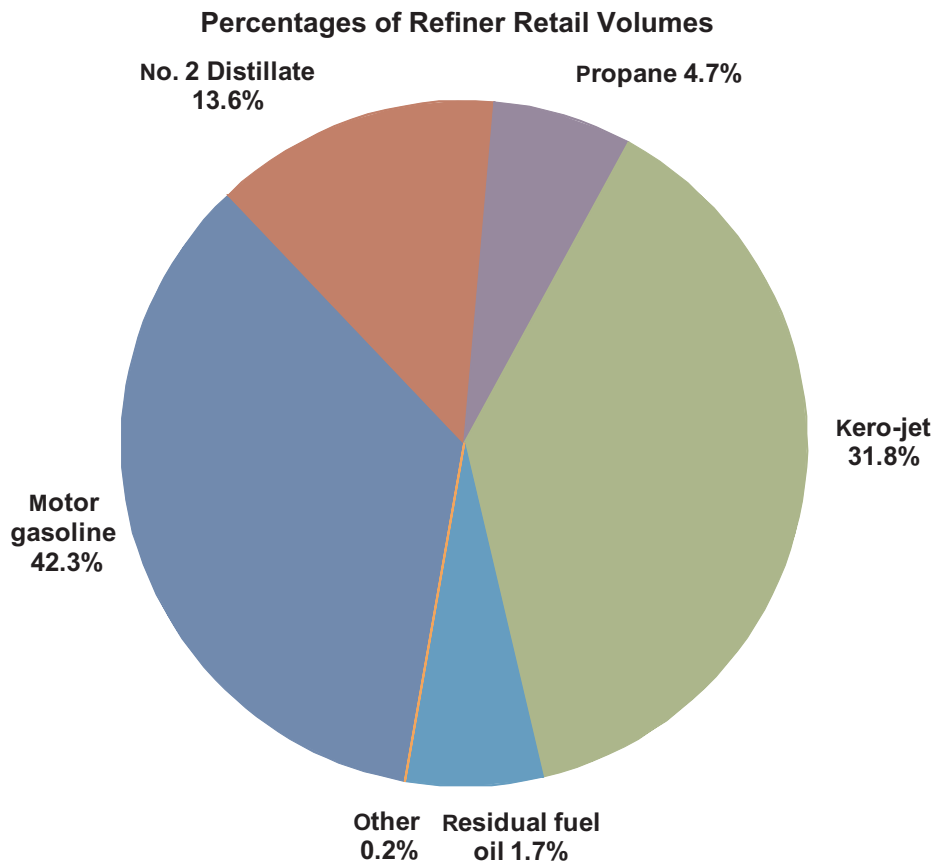
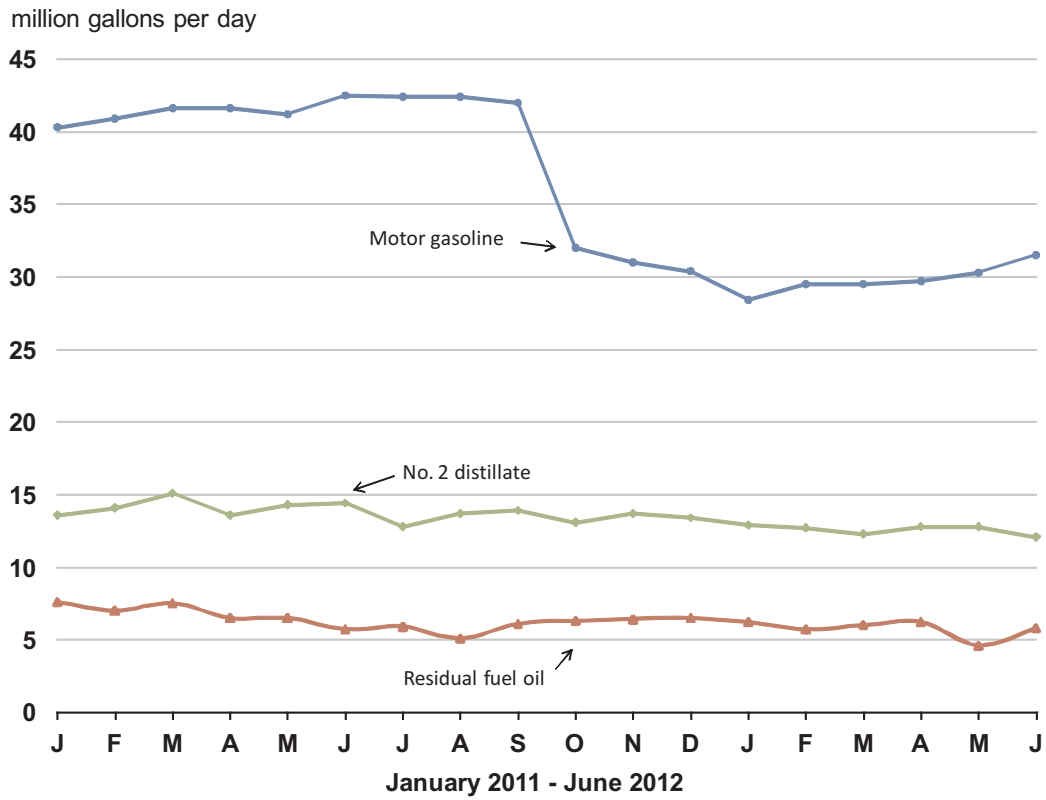
^R Revised data.

Note: Motor gasoline averages and totals prior to October 1993 include leaded gasoline.

Notes: Values shown for the current month are preliminary. Values shown for previous months are revised. Data are final upon publication in the *Petroleum Marketing Annual*. Totals may not equal the sum of the components due to rounding.

Source: Energy Information Administration Form EIA-782A, "Refiners'/Gas Plant Operators' Monthly Petroleum Product Sales Report."

Figure 3. U.S. Refiner Retail Petroleum Product Volumes



Source: Energy Information Administration, Form EIA--782A, "Refiners' /Gas Plant Operators' Monthly Petroleum Product Sales Report."

Table 4. U.S. Refiner Prices of Petroleum Products for Resale
(Dollars per Gallon Excluding Taxes)

Year Month	Motor Gasoline	Aviation Gasoline	Kerosene- Type Jet Fuel	Propane (Consumer Grade)	Kerosene	No. 1 Distillate	No. 2 Distillate			No. 4 Fuel ^a	Residual Fuel Oil
							No. 2 Diesel Fuel	No. 2 Fuel Oil	Average		
1985	0.835	1.130	0.794	0.398	0.874	0.863	0.772	0.776	0.774	0.672	0.577
1986	0.531	0.912	0.495	0.290	0.606	0.579	0.452	0.486	0.470	0.409	0.305
1987	0.589	0.859	0.538	0.252	0.592	0.599	0.534	0.527	0.531	0.462	0.385
1988	0.577	0.850	0.495	0.240	0.549	0.549	0.473	0.473	0.473	0.425	0.300
1989	0.654	0.950	0.583	0.247	0.669	0.668	0.567	0.565	0.566	0.480	0.360
1990	0.786	1.063	0.773	0.386	0.839	0.838	0.694	0.697	0.695	0.590	0.413
1991	0.699	1.001	0.650	0.349	0.723	0.730	0.615	0.622	0.618	0.556	0.314
1992	0.677	0.991	0.605	0.328	0.632	0.652	0.591	0.579	0.585	0.495	0.308
1993	0.626	0.965	0.577	0.351	0.604	0.646	0.570	0.544	0.559	0.488	0.293
1994	0.599	0.933	0.534	0.324	0.618	0.615	0.529	0.506	0.522	0.462	0.317
1995	0.626	0.975	0.539	0.344	0.580	0.625	0.538	0.511	0.530	0.463	0.363
1996	0.713	1.055	0.646	0.461	0.714	0.751	0.659	0.639	0.653	0.603	0.420
1997	0.700	1.065	0.613	0.416	0.653	0.723	0.606	0.590	0.602	0.551	0.387
1998	0.526	0.912	0.450	0.288	0.465	0.513	0.444	0.422	0.439	0.383	0.280
1999	0.645	1.007	0.533	0.342	0.550	0.634	0.546	0.493	0.536	0.430	0.354
2000	0.963	1.330	0.880	0.595	0.969	1.019	0.898	0.886	0.896	0.778	0.566
2001	0.886	1.256	0.763	0.540	0.821	0.883	0.784	0.756	0.779	0.697	0.476
2002	0.828	1.146	0.716	0.431	0.752	0.805	0.724	0.694	0.718	0.663	0.530
2003	1.002	1.288	0.871	0.607	0.955	1.033	0.883	0.881	0.882	0.793	0.661
2004	1.288	1.627	1.208	0.751	1.271	1.289	1.187	1.125	1.178	1.033	0.681
2005	1.670	2.076	1.723	0.933	1.757	1.801	1.737	1.623	1.720	1.377	0.971
2006	1.969	2.490	1.961	1.031	2.007	2.044	2.012	1.834	1.991	1.395	1.136
2007	2.182	2.758	2.171	1.194	2.249	2.430	2.203	2.072	2.190	1.551	1.350
2008	2.586	3.342	3.020	1.437	2.851	2.712	2.994	2.745	2.970	2.157	1.866
2009	1.767	2.480	1.719	0.921	1.844	2.050	1.713	1.657	1.707	1.561	1.342
2010											
January	2.097	2.759	2.121	1.332	2.282	2.364	2.078	2.075	2.078	2.028	1.721
February	2.033	2.662	1.999	1.324	2.216	2.246	2.025	1.986	2.019	W	1.666
March	2.197	2.906	2.129	1.179	2.219	NA	2.163	2.100	2.158	W	1.711
April	2.265	2.999	2.247	1.144	2.281	2.723	2.312	2.214	2.306	W	1.748
May	2.152	2.945	2.186	1.098	2.110	2.519	2.177	2.129	2.175	W	1.675
June	2.113	2.835	2.094	1.049	2.103	2.368	2.120	2.037	2.115	W	1.612
July	2.113	2.891	2.100	1.012	2.046	2.343	2.098	2.001	2.093	W	1.629
August	2.095	2.842	2.138	1.084	2.125	2.412	2.161	2.041	2.155	W	1.642
September	2.088	2.805	2.131	1.151	2.163	2.494	2.190	2.093	2.186	W	1.632
October	2.198	2.890	2.263	1.253	2.384	2.660	2.325	2.221	2.318	W	1.712
November	2.243	2.868	2.342	1.277	NA	2.737	2.392	2.308	2.385	W	1.768
December	2.383	3.024	2.459	1.322	2.744	2.870	2.486	2.435	2.480	W	1.865
2010	2.165	2.874	2.185	1.212	2.299	2.573	2.214	2.147	2.208	W	1.697
2011											
January	2.472	3.161	2.585	1.380	2.804	2.913	2.621	2.585	2.617	W	1.918
February	2.584	3.248	2.783	1.401	2.974	3.032	2.820	2.737	2.811	W	2.086
March	2.934	3.607	3.095	1.403	3.196	3.380	3.134	2.996	3.124	W	2.321
April	3.218	4.035	3.259	1.433	3.296	3.676	3.296	3.167	3.289	W	2.448
May	3.174	4.096	3.188	1.515	W	3.476	3.116	3.039	3.114	W	2.392
June	2.970	3.847	3.101	1.503	3.054	3.172	3.079	2.956	3.073	W	2.402
July	3.058	4.011	3.090	1.513	3.158	3.156	3.135	3.024	3.129	W	2.474
August	2.949	3.899	3.040	1.522	3.089	3.266	3.032	2.927	3.026	W	2.392
September	2.896	3.878	3.025	1.557	3.073	3.323	3.035	2.927	3.028	W	2.369
October	2.805	3.616	2.962	1.511	3.096	3.425	3.035	2.915	3.026	W	2.406
November	2.701	3.494	3.089	1.498	3.258	3.490	3.157	3.050	3.148	W	2.459
December	2.614	3.424	2.951	1.444	3.006	3.242	2.927	2.928	2.927	W	2.371
2011	2.867	3.739	3.014	1.467	3.065	3.223	3.034	2.907	3.025	2.801	2.336
2012											
January	2.747	3.576	3.059	1.341	3.197	3.260	3.018	3.027	3.019	W	2.512
February	2.936	3.788	3.186	1.282	3.293	3.368	3.163	3.166	3.163	W	2.654
March	3.203	4.052	3.296	1.293	3.306	3.591	3.308	3.211	3.300	W	2.772
April	3.189	4.157	3.255	1.163	3.243	3.669	3.252	3.153	3.245	W	2.670
May	3.016	4.004	R3.076	0.950	R3.008	R3.381	3.039	2.976	3.035	W	R2.527
June	2.757	3.855	2.750	0.762	2.697	2.921	2.741	2.629	2.735	W	2.210

NA = Not available.

W = Withheld to avoid disclosure of individual company data.

^a Includes No. 4 fuel oil and No. 4 diesel fuel.

R Revised data.

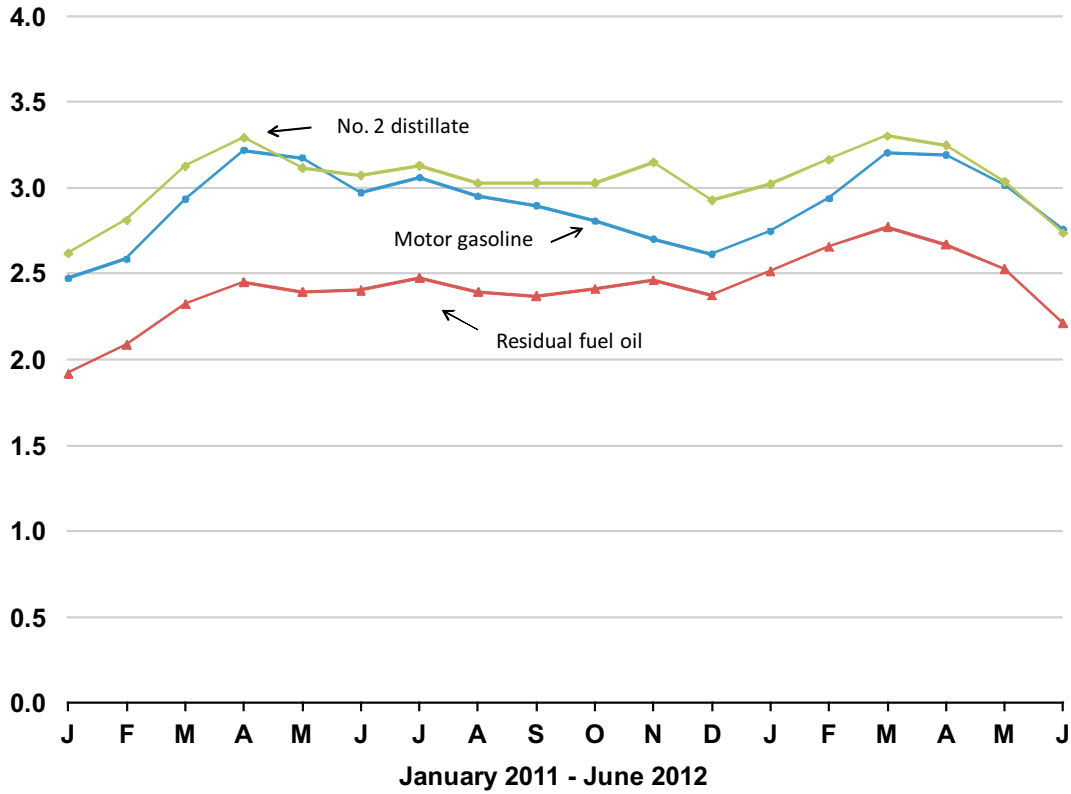
Note: Motor gasoline averages and totals prior to October 1993 include leaded gasoline.

Notes: Values shown for the current month are preliminary. Values shown for previous months are revised. Data are final upon publication in the *Petroleum Marketing Annual*.

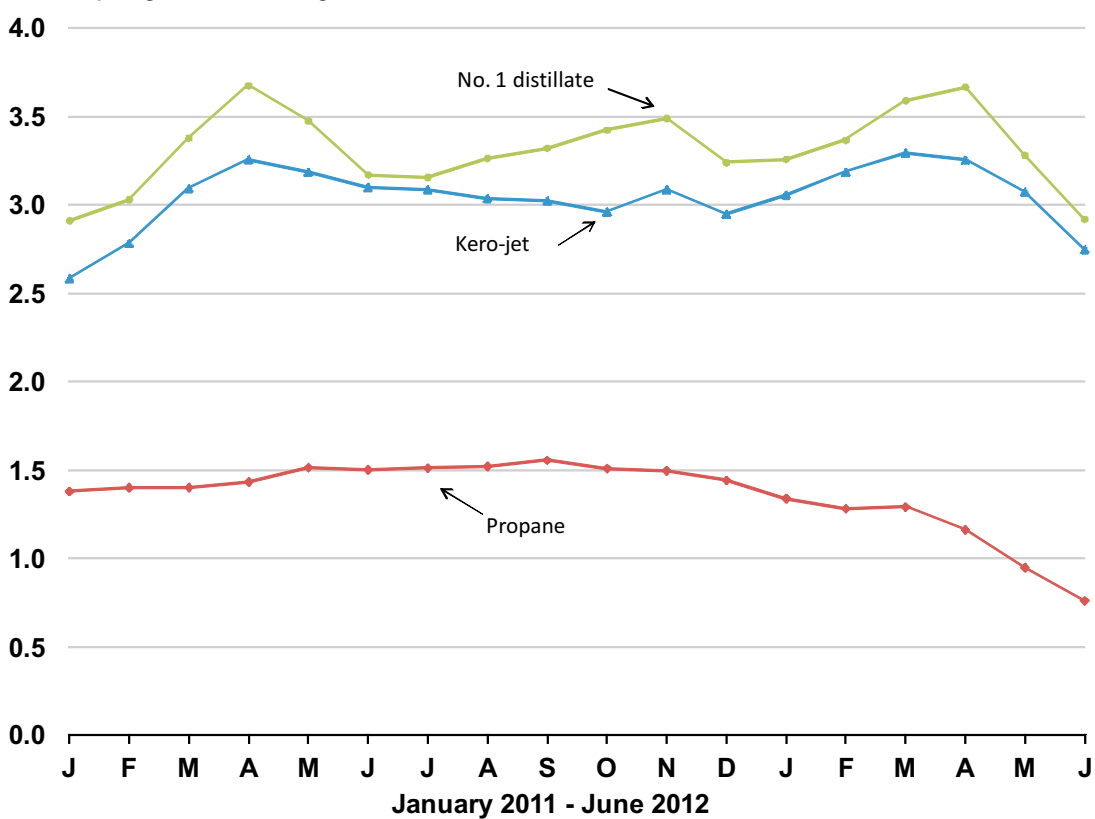
Source: Energy Information Administration Form EIA-782A, "Refiners'/Gas Plant Operators' Monthly Petroleum Product Sales Report."

Figure 4. U.S. Refiner Wholesale Petroleum Product Prices

dollars per gallon excluding taxes



dollars per gallon excluding taxes



Source: Energy Information Administration, Form EIA-782A, "Refiners' /Gas Plant Operators' Monthly Petroleum Product Sales Report."

Table 5. U.S. Refiner Volumes of Petroleum Products for Resale
(Million Gallons per Day)

Year Month	Motor Gasoline	Aviation Gasoline	Kerosene- Type Jet Fuel	Propane (Consumer Grade)	Kerosene	No. 1 Distillate	No. 2 Distillate			No. 4 Fuel ^a	Residual Fuel Oil
							No. 2 Diesel Fuel	No. 2 Fuel Oil	Total		
1985	256.9	0.7	7.6	29.2	2.4	2.7	43.3	53.9	97.3	1.2	19.9
1986	257.2	0.7	9.2	26.3	2.4	2.5	46.4	53.8	100.3	1.2	18.6
1987	257.2	0.8	10.1	27.0	2.3	2.0	44.3	49.3	93.6	1.5	16.9
1988	263.7	0.7	10.0	27.7	2.7	2.6	47.8	50.1	97.9	1.2	18.9
1989	260.7	0.7	8.6	25.9	2.7	2.7	50.7	46.7	97.5	1.2	21.0
1990	264.8	0.7	8.8	25.5	2.2	2.4	51.9	45.9	97.8	0.8	17.9
1991	261.3	0.7	8.7	25.4	2.1	2.4	51.5	46.9	98.3	0.4	17.8
1992	265.4	0.7	8.0	26.7	2.2	2.3	50.8	48.9	99.7	0.4	15.2
1993	266.9	0.6	8.3	27.9	2.3	2.3	58.0	43.6	101.7	0.4	12.6
1994	276.7	0.7	9.1	28.4	2.5	1.9	72.4	32.9	105.3	0.4	12.8
1995	288.8	0.6	9.9	30.6	2.4	1.7	75.9	31.0	106.9	0.3	13.6
1996	293.6	0.6	11.5	32.9	2.7	1.8	83.7	33.1	116.8	0.3	13.8
1997	292.7	0.6	11.3	32.2	2.5	1.6	88.7	31.2	119.9	0.2	11.5
1998	300.4	0.6	12.2	32.7	2.2	1.4	91.9	27.3	119.2	0.1	15.4
1999	306.9	0.7	15.2	33.6	2.4	1.7	95.5	24.3	119.9	0.2	11.5
2000	304.4	0.6	15.7	34.8	2.3	1.5	98.8	23.3	122.1	0.2	10.5
2001	305.2	0.6	14.3	35.0	2.2	1.4	101.3	25.2	126.4	0.1	10.3
2002	311.8	0.6	12.1	32.9	2.0	1.3	100.8	23.6	124.4	0.1	8.8
2003	311.6	0.5	12.2	36.5	2.3	1.2	108.9	20.9	129.8	0.1	6.7
2004	316.4	0.6	12.7	40.3	2.1	1.3	116.5	19.6	136.1	NA	5.9
2005	321.8	0.5	15.2	35.1	2.0	1.4	118.7	20.6	139.3	NA	4.7
2006	315.6	0.5	15.2	39.4	1.4	1.3	123.2	16.7	139.9	0.3	6.5
2007	319.8	0.5	16.6	41.7	1.4	0.9	135.3	14.5	149.8	0.3	8.2
2008	306.4	0.4	16.5	34.2	1.0	1.0	138.7	14.9	153.6	0.2	9.5
2009	307.4	0.4	15.2	31.8	1.3	1.0	128.0	15.1	143.1	0.1	9.8
2010											
January	281.9	0.2	15.3	41.2	2.5	2.1	111.1	19.1	130.2	0.2	8.7
February	305.0	0.3	17.4	39.4	1.4	1.8	119.1	19.7	138.9	W	10.3
March	309.1	0.4	18.6	30.5	1.0	0.7	127.6	11.3	138.9	W	10.9
April	316.3	0.5	20.6	23.5	0.7	0.3	136.0	8.2	144.2	W	9.3
May	318.1	0.4	19.3	19.9	0.9	0.2	135.8	8.8	144.6	W	11.6
June	324.2	0.5	22.1	21.9	0.9	0.2	148.3	10.4	158.8	W	11.8
July	328.0	0.5	25.5	19.6	1.2	0.2	144.9	8.0	152.9	W	10.8
August	328.2	0.5	23.8	22.3	1.0	0.2	148.8	7.2	156.0	W	11.4
September	313.3	0.5	21.3	24.5	1.5	0.4	149.4	6.6	156.0	W	11.3
October	307.7	0.4	18.5	23.1	1.2	0.8	138.2	9.9	148.1	W	10.7
November	304.8	0.4	20.3	30.6	1.8	1.9	127.9	11.4	139.2	W	10.1
December	307.2	0.3	20.4	43.4	2.3	2.5	137.5	18.2	155.6	W	11.7
2010	312.0	0.4	20.3	28.3	1.4	0.9	135.5	11.5	147.0	W	10.7
2011											
January	283.5	0.3	22.3	43.0	2.0	2.3	128.6	14.9	143.5	W	11.7
February	297.3	0.3	22.7	32.0	1.6	2.1	128.3	15.8	144.1	W	13.3
March	291.5	0.4	23.3	26.4	1.0	0.8	130.6	10.7	141.3	W	14.8
April	290.8	0.4	20.3	20.8	0.9	0.3	131.7	7.4	139.1	W	11.1
May	295.8	0.4	21.7	25.1	W	0.2	130.9	4.9	135.8	W	11.8
June	302.7	0.4	25.5	25.0	1.2	0.4	140.1	7.6	147.7	W	14.0
July	297.7	0.4	24.0	20.5	1.2	0.5	130.7	6.8	137.6	W	13.3
August	306.6	0.5	23.9	24.3	1.0	0.3	141.0	9.5	150.5	W	10.1
September	299.1	0.4	22.9	26.3	1.6	0.5	138.8	10.4	149.2	W	11.9
October	289.5	0.4	21.2	30.8	1.3	0.8	138.2	11.2	149.4	W	11.4
November	296.7	0.3	22.6	32.8	1.1	2.1	137.7	12.7	150.5	W	11.7
December	304.8	0.3	25.0	35.6	1.5	2.3	138.3	16.5	154.8	W	11.4
2011	296.3	0.4	23.0	28.6	1.2	1.0	134.6	10.7	145.3	0.1	12.2
2012											
January	282.1	0.3	24.2	36.9	1.7	1.9	126.5	17.7	144.2	W	9.5
February	293.4	0.4	22.6	34.3	1.3	1.4	135.0	15.0	149.9	W	9.1
March	293.8	0.4	23.5	24.2	1.0	0.6	135.9	12.2	148.1	W	8.3
April	292.7	0.4	22.2	21.6	0.8	0.3	134.0	9.0	143.0	W	9.0
May	301.2	0.4	23.2	20.7	R0.8	R0.2	R137.9	8.9	R146.8	W	R10.0
June	311.1	0.4	24.8	20.7	0.8	0.2	144.0	9.1	153.0	W	9.9

NA = Not available.

W = Withheld to avoid disclosure of individual company data.

^a Includes No. 4 fuel oil and No. 4 diesel fuel.

^R Revised data.

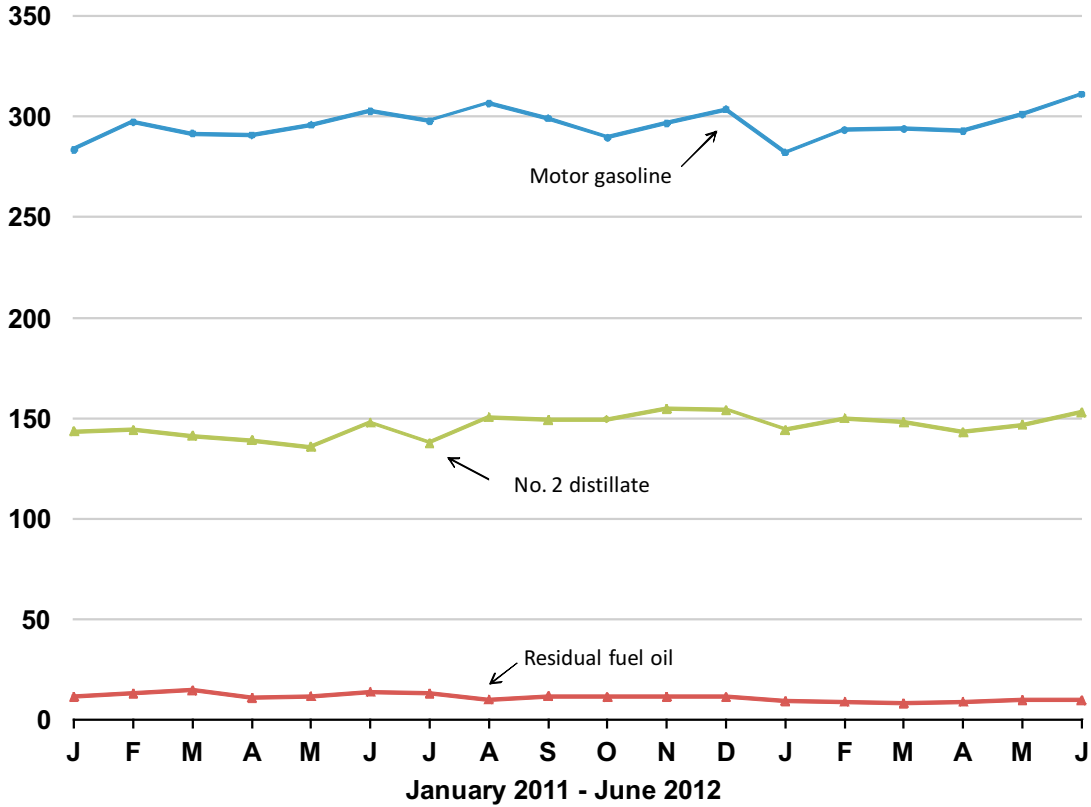
Note: Motor gasoline averages and totals prior to October 1993 include leaded gasoline.

Notes: Values shown for the current month are preliminary. Values shown for previous months are revised. Data are final upon publication in the *Petroleum Marketing Annual*. Totals may not equal the sum of the components due to rounding.

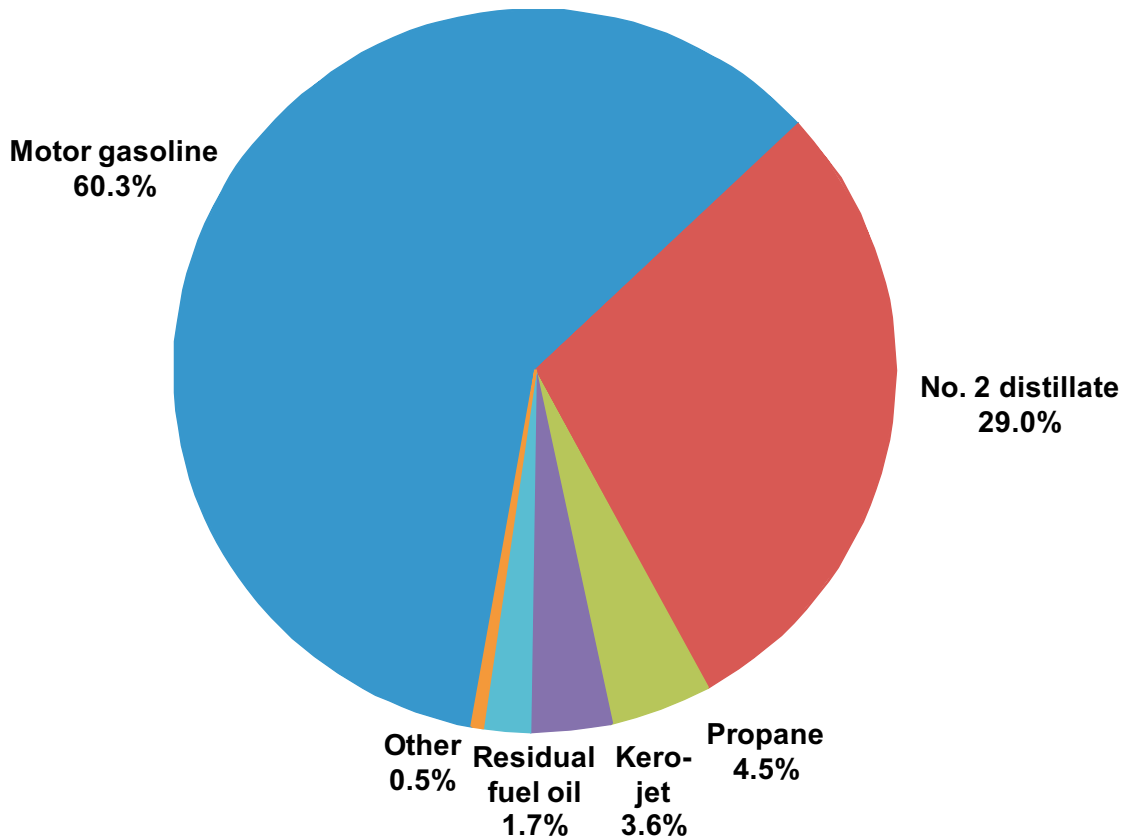
Source: Energy Information Administration Form EIA-782A, "Refiners'/Gas Plant Operators' Monthly Petroleum Product Sales Report."

Figure 5. U.S. Refiner Wholesale Petroleum Product Volumes

million gallons per day



Percentages of Refiner Wholesale Volumes



Source: Energy Information Administration, Form EIA-782A, "Refiners' /Gas Plant Operators' Monthly Petroleum Product Sales Report."

Table 6. U.S. Refiner Motor Gasoline Prices by Grade and Sales Type
(Dollars per Gallon Excluding Taxes)

Year Month	Regular						Midgrade					
	Sales to End Users		Sales for Resale				Sales to End Users		Sales for Resale			
	Through Retail Outlets	Average ^a	DTW	Rack	Bulk	Average	Through Retail Outlets	Average ^a	DTW	Rack	Bulk	Average
1985	0.925	0.917	-	-	-	0.843	-	-	-	-	-	-
1986	0.624	0.616	-	-	-	0.522	-	-	-	-	-	-
1987	0.659	0.650	-	-	-	0.569	-	-	-	-	-	-
1988	0.649	0.641	-	-	-	0.548	-	-	-	-	-	-
1989	0.720	0.714	-	-	-	0.618	0.796	0.793	-	-	-	0.686
1990	0.853	0.849	-	-	-	0.758	0.923	0.921	-	-	-	0.814
1991	0.764	0.761	-	-	-	0.672	0.847	0.843	-	-	-	0.733
1992	0.746	0.743	-	-	-	0.645	0.831	0.827	-	-	-	0.708
1993	0.716	0.712	-	-	-	0.593	0.810	0.805	-	-	-	0.660
1994	0.695	0.689	0.646	0.547	0.502	0.566	0.791	0.785	0.704	0.584	NA	0.638
1995	0.723	0.717	0.682	0.576	0.534	0.593	0.813	0.808	0.737	0.619	NA	0.670
1996	0.812	0.807	0.770	0.672	0.622	0.685	0.901	0.896	0.824	0.709	NA	0.759
1997	0.803	0.798	0.764	0.656	0.615	0.673	0.898	0.895	0.822	0.694	0.711	0.749
1998	0.634	0.630	0.596	0.481	0.449	0.499	0.731	0.728	0.655	0.521	NA	0.576
1999	0.747	0.742	0.730	0.605	0.542	0.620	0.838	0.835	0.784	0.639	NA	0.696
2000	1.077	1.073	1.042	0.927	0.873	0.942	1.171	1.168	1.099	0.960	-	1.013
2001	1.000	0.997	0.977	0.848	0.786	0.865	1.103	1.100	1.042	0.888	-	0.945
2002	0.915	0.912	0.886	0.801	0.735	0.806	1.013	1.010	0.968	0.839	-	0.885
2003	1.127	1.123	1.134	0.965	0.888	0.981	1.222	1.218	1.196	1.004	-	1.061
2004	1.407	1.404	1.414	1.257	1.182	1.269	1.503	1.499	1.469	1.296	-	1.340
2005	1.805	1.802	1.765	1.653	1.568	1.654	1.896	1.893	1.821	1.681	-	1.708
2006	2.102	2.099	2.082	1.944	1.866	1.950	2.216	2.213	2.157	1.987	-	2.016
2007	2.318	2.315	2.278	2.161	2.074	2.161	2.440	2.438	2.351	2.226	-	2.245
2008	2.752	2.748	2.702	2.558	2.525	2.570	2.880	2.879	2.775	2.588	-	2.610
2009	1.860	1.856	1.866	1.744	1.668	1.747	1.998	1.997	1.957	1.762	-	1.784
2010												
January	2.214	2.209	2.199	2.071	2.028	2.079	2.354	2.354	2.293	2.093	-	2.114
February	2.147	2.141	2.136	2.008	1.960	2.014	2.292	2.293	2.236	2.025	-	2.048
March	2.276	2.271	2.252	2.174	2.146	2.179	2.411	2.412	2.343	2.205	-	2.218
April	2.345	2.341	2.302	2.248	2.204	2.247	2.476	2.476	2.385	2.275	-	2.286
May	2.329	2.322	2.282	2.113	2.122	2.133	2.471	2.471	2.377	2.125	-	2.147
June	2.223	2.219	2.242	2.090	1.999	2.092	2.368	2.368	2.353	2.105	-	2.126
July	2.218	2.213	2.262	2.085	2.013	2.091	2.369	2.369	2.380	2.105	-	2.126
August	2.220	2.216	2.258	2.067	1.996	2.074	2.376	2.376	2.366	2.095	-	2.115
September	2.191	2.188	2.157	2.073	1.971	2.067	2.336	2.336	2.257	2.126	-	2.136
October	2.292	2.288	2.272	2.184	2.074	2.177	2.431	2.430	2.376	2.219	-	2.231
November	2.351	2.347	2.332	2.227	2.121	2.222	2.490	2.490	2.428	2.251	-	2.265
December	2.491	2.485	2.446	2.370	2.277	2.364	2.623	2.622	2.544	2.399	-	2.410
2010	2.275	2.270	2.261	2.144	2.073	2.146	2.416	2.416	2.357	2.168	-	2.185
2011												
January	2.593	2.587	2.531	2.453	2.400	2.454	2.727	2.727	2.630	2.506	-	2.515
February	2.689	2.683	2.669	2.567	2.476	2.564	2.828	2.828	2.780	2.610	-	2.623
March	3.051	3.043	3.054	2.911	2.818	2.915	3.192	3.192	3.176	2.939	-	2.957
April	3.318	3.313	3.284	3.201	3.093	3.198	3.448	3.448	3.410	3.231	-	3.244
May	3.398	3.391	3.294	3.145	3.098	3.154	3.536	3.535	3.381	3.210	-	3.222
June	3.159	3.154	3.079	2.943	2.897	2.951	3.308	3.308	3.158	2.970	-	2.984
July	3.147	3.144	3.011	3.054	2.932	3.037	3.274	3.275	3.092	3.097	-	3.096
August	3.110	3.106	2.964	2.930	2.886	2.928	3.244	3.244	3.040	2.985	-	2.989
September	3.064	3.057	3.065	2.860	2.805	2.872	3.228	3.229	3.171	2.914	-	2.933
October	2.951	2.941	2.960	2.770	2.712	2.782	3.124	3.124	3.082	2.816	-	2.835
November	2.897	2.884	2.878	2.667	2.603	2.680	3.066	3.063	2.989	2.695	-	2.715
December	2.786	2.773	2.717	2.587	2.544	2.593	2.934	2.930	2.822	2.599	-	2.615
2011	3.028	3.021	2.961	2.846	2.762	2.847	3.165	3.165	3.057	2.880	-	2.893
2012												
January	2.894	2.882	2.826	2.721	2.700	2.729	3.024	3.023	2.939	2.674	-	2.693
February	3.066	3.051	3.061	2.899	2.912	2.915	3.212	3.212	3.181	2.888	-	2.909
March	3.367	3.356	3.359	3.171	3.119	3.183	3.506	3.506	3.483	3.159	-	3.181
April	3.386	3.370	3.309	3.151	3.172	3.167	3.545	3.542	3.405	3.125	-	3.144
May	R3.266	R3.249	3.313	2.960	R2.943	2.990	R3.446	R3.445	3.446	R2.936	-	R2.968
June	3.040	3.022	2.989	2.706	2.675	2.727	3.217	3.215	3.082	2.786	-	2.804

See footnotes at end of table.

Table 6. U.S. Refiner Motor Gasoline Prices by Grade and Sales Type

(Dollars per Gallon Excluding Taxes) — Continued

Year Month	Premium						All Grades					
	Sales to End Users		Sales for Resale				Sales to End Users		Sales for Resale			
	Through Retail Outlets	Average ^a	DTW	Rack	Bulk	Average	Through Retail Outlets	Average ^a	DTW	Rack	Bulk	Average
1985	1.030	1.023	-	-	-	0.922	0.921	0.912	-	-	-	0.835
1986	0.748	0.737	-	-	-	0.610	0.632	0.624	-	-	-	0.531
1987	0.790	0.784	-	-	-	0.671	0.678	0.669	-	-	-	0.589
1988	0.794	0.788	-	-	-	0.672	0.681	0.673	-	-	-	0.577
1989	0.874	0.868	-	-	-	0.749	0.763	0.756	-	-	-	0.654
1990	0.990	0.985	-	-	-	0.874	0.888	0.883	-	-	-	0.786
1991	0.912	0.907	-	-	-	0.792	0.800	0.797	-	-	-	0.699
1992	0.920	0.914	-	-	-	0.774	0.792	0.787	-	-	-	0.677
1993	0.896	0.889	-	-	-	0.722	0.765	0.759	-	-	-	0.626
1994	0.873	0.865	0.787	0.640	0.556	0.695	0.744	0.738	0.693	0.567	0.509	0.599
1995	0.897	0.890	0.822	0.673	0.583	0.722	0.771	0.765	0.729	0.598	0.540	0.626
1996	0.979	0.972	0.897	0.762	0.669	0.803	0.853	0.847	0.809	0.690	0.627	0.713
1997	0.979	0.973	0.895	0.749	0.658	0.792	0.844	0.839	0.803	0.674	0.620	0.700
1998	0.811	0.805	0.726	0.573	0.489	0.617	0.678	0.673	0.636	0.500	0.454	0.526
1999	0.912	0.906	0.851	0.687	0.585	0.726	0.785	0.781	0.765	0.621	0.549	0.645
2000	1.250	1.242	1.174	1.017	0.927	1.055	1.111	1.106	1.074	0.940	0.879	0.963
2001	1.181	1.175	1.112	0.936	0.830	0.980	1.035	1.032	1.009	0.862	0.791	0.886
2002	1.094	1.088	1.030	0.899	0.800	0.928	0.949	0.947	0.922	0.816	0.741	0.828
2003	1.312	1.305	1.269	1.064	0.955	1.113	1.160	1.156	1.164	0.978	0.893	1.002
2004	1.603	1.596	1.553	1.361	1.274	1.408	1.439	1.435	1.442	1.270	1.187	1.288
2005	2.000	1.992	1.901	1.760	1.696	1.789	1.833	1.829	1.791	1.664	1.576	1.670
2006	2.326	2.320	2.231	2.093	1.988	2.117	2.131	2.128	2.110	1.959	1.873	1.969
2007	2.558	2.552	2.460	2.339	2.209	2.357	2.349	2.345	2.311	2.180	2.080	2.182
2008	2.971	2.965	2.846	2.718	2.689	2.746	2.778	2.775	2.726	2.572	2.532	2.586
2009	2.128	2.122	2.059	1.941	1.816	1.958	1.892	1.888	1.899	1.761	1.675	1.767
2010												
January	2.487	2.475	2.390	2.250	2.066	2.265	2.245	2.240	2.231	2.086	2.030	2.097
February	2.425	2.417	2.330	2.193	2.028	2.210	2.179	2.173	2.170	2.024	1.963	2.033
March	2.533	2.527	2.438	2.362	2.248	2.368	2.305	2.301	2.284	2.192	2.152	2.197
April	2.593	2.588	2.482	2.437	2.320	2.438	2.374	2.370	2.333	2.265	2.209	2.265
May	2.593	2.586	2.465	2.305	2.258	2.335	2.360	2.353	2.315	2.131	2.128	2.152
June	2.503	2.496	2.432	2.288	2.118	2.307	2.256	2.251	2.276	2.109	2.004	2.113
July	2.500	2.494	2.451	2.285	2.173	2.312	2.251	2.247	2.295	2.105	2.018	2.113
August	2.506	2.499	2.440	2.268	2.067	2.287	2.254	2.250	2.290	2.088	1.999	2.095
September	2.453	2.447	2.335	2.260	2.080	2.261	2.223	2.219	2.189	2.093	1.977	2.088
October	2.557	2.546	2.454	2.374	2.201	2.381	2.323	2.319	2.304	2.203	2.079	2.198
November	2.623	2.617	2.513	2.418	2.238	2.416	2.382	2.378	2.363	2.245	2.130	2.243
December	2.755	2.747	2.630	2.555	2.399	2.556	2.520	2.514	2.477	2.387	2.284	2.383
2010	2.543	2.536	2.446	2.334	2.187	2.346	2.306	2.301	2.293	2.162	2.078	2.165
2011												
January	2.856	2.848	2.713	2.631	2.480	2.631	2.622	2.615	2.562	2.471	2.406	2.472
February	2.955	2.947	2.852	2.756	2.588	2.762	2.718	2.712	2.700	2.585	2.481	2.584
March	3.322	3.314	3.241	3.109	2.990	3.128	3.079	3.072	3.083	2.928	2.824	2.934
April	3.576	3.571	3.475	3.406	3.276	3.409	3.345	3.340	3.314	3.219	3.104	3.218
May	3.661	3.654	3.476	3.343	3.268	3.360	3.425	3.419	3.323	3.164	3.107	3.174
June	3.435	3.427	3.255	3.149	2.986	3.157	3.190	3.184	3.107	2.962	2.901	2.970
July	3.396	3.394	3.192	3.261	3.074	3.234	3.174	3.172	3.040	3.074	2.943	3.058
August	3.369	3.365	3.141	3.146	3.031	3.140	3.139	3.134	2.993	2.951	2.892	2.949
September	3.358	3.350	3.250	3.089	2.975	3.107	3.097	3.090	3.096	2.882	2.815	2.896
October	3.240	3.230	3.148	2.988	2.876	3.011	2.990	2.980	2.991	2.791	2.718	2.805
November	3.191	3.177	3.061	2.875	2.727	2.887	2.936	2.922	2.909	2.687	2.616	2.701
December	3.061	3.048	2.902	2.789	2.718	2.797	2.822	2.808	2.748	2.606	2.562	2.614
2011	3.291	3.283	3.139	3.047	2.873	3.049	3.058	3.050	2.990	2.864	2.769	2.867
2012												
January	3.154	3.145	3.015	2.932	2.888	2.942	2.926	2.914	2.857	2.738	2.713	2.747
February	3.350	3.337	3.255	3.116	3.147	3.141	3.101	3.087	3.093	2.917	2.936	2.936
March	3.634	3.623	3.550	3.390	3.286	3.405	3.400	3.389	3.390	3.189	3.135	3.203
April	3.654	3.640	3.490	3.389	3.413	3.407	3.420	3.405	3.338	3.170	3.202	3.189
May	3.564	R3.545	3.502	R3.222	3.111	3.249	R3.305	3.289	3.344	R2.983	R2.965	3.016
June	3.321	3.303	3.163	2.972	3.000	3.002	3.078	3.060	3.018	2.734	2.707	2.757

Dash (-) = No data reported.

NA = Not available.

^a Includes sales through retail outlets as well as all direct sales to end users that were not made through company-operated retail outlets, e.g., sales to agricultural customers, commercial sales, and industrial sales.

^R Revised data.

Notes: Data for the 4th quarter of 1993 were derived from two separate survey systems. The DTW, Rack, and Bulk components were derived from the revised EIA-782 survey system, while the End-Use and Average Resale categories were derived from the predecessor EIA-782 survey system. Therefore, the DTW, Rack, and Bulk components are not consistent with the Average Resale category. Beginning January 1994, all data are from the revised EIA-782 survey system and are consistent.

Note: Motor gasoline averages and totals prior to October 1993 include leaded gasoline.

Notes: Values shown for the current month are preliminary. Values shown for previous months are revised. Data are final upon publication in the *Petroleum Marketing Annual*.

Source: Energy Information Administration Form EIA-782A, "Refiners'/Gas Plant Operators' Monthly Petroleum Product Sales Report."

Table 7. U.S. Refiner Motor Gasoline Volumes by Grade and Sales Type

(Million Gallons per Day)

Year Month	Regular						Midgrade					
	Sales to End Users		Sales for Resale				Sales to End Users		Sales for Resale			
	Through Retail Outlets	Total ^a	DTW	Rack	Bulk	Total	Through Retail Outlets	Total ^a	DTW	Rack	Bulk	Total
1985	26.2	29.9	-	-	-	119.7	-	-	-	-	-	-
1986	30.9	34.7	-	-	-	127.0	-	-	-	-	-	-
1987	32.7	36.1	-	-	-	141.9	-	-	-	-	-	-
1988	34.2	37.3	-	-	-	153.6	-	-	-	-	-	-
1989	34.3	36.8	-	-	-	155.7	4.9	5.1	-	-	-	16.4
1990	36.7	38.8	-	-	-	174.5	7.4	7.6	-	-	-	23.1
1991	38.4	40.4	-	-	-	180.9	7.9	8.2	-	-	-	23.7
1992	36.5	38.4	-	-	-	182.2	8.9	9.2	-	-	-	27.5
1993	35.6	37.2	-	-	-	184.0	8.7	8.9	-	-	-	27.7
1994	34.3	35.9	47.7	120.3	24.3	192.3	8.5	8.7	12.8	15.7	0.2	28.7
1995	34.3	35.9	43.8	126.2	31.8	201.8	9.6	9.8	13.3	17.2	0.1	30.6
1996	37.2	38.9	46.5	131.9	35.2	213.6	9.5	9.8	12.9	16.6	NA	29.5
1997	40.5	42.4	46.2	135.7	33.9	215.8	9.7	10.0	12.1	16.3	NA	28.4
1998	41.7	43.2	44.4	138.9	37.1	220.3	10.1	10.3	11.1	16.3	NA	27.4
1999	41.6	43.0	45.6	147.5	34.5	227.6	9.9	10.1	10.5	16.1	NA	26.6
2000	43.6	45.0	47.5	159.3	32.4	239.3	8.6	8.7	8.8	14.2	-	23.0
2001	45.0	46.3	47.2	163.2	33.0	243.5	8.3	8.4	7.8	13.3	-	21.1
2002	46.2	47.4	46.9	163.0	39.2	249.2	8.3	8.5	7.4	13.4	-	20.8
2003	47.3	48.6	43.5	171.4	40.1	255.0	7.8	7.9	5.5	13.1	-	18.6
2004	44.5	45.8	41.1	182.1	42.2	265.4	6.4	6.5	4.4	12.7	-	17.0
2005	46.4	47.5	37.5	189.8	45.8	273.2	5.9	6.0	3.2	13.5	-	16.7
2006	48.2	49.4	34.8	196.0	40.8	271.7	5.5	5.5	2.4	11.7	-	14.1
2007	47.0	47.8	34.0	195.7	46.8	276.6	5.0	5.0	2.0	11.7	-	13.7
2008	45.6	46.6	32.5	192.7	43.7	268.8	4.1	4.2	1.5	11.0	-	12.5
2009	40.5	42.2	32.4	196.8	39.3	268.5	3.5	3.5	1.3	10.2	-	11.5
2010												
January	36.0	37.5	28.7	183.5	34.8	247.0	3.0	3.1	1.1	8.9	-	10.0
February	36.2	37.7	29.8	194.6	43.0	267.4	3.1	3.1	1.2	9.6	-	10.8
March	37.2	38.8	30.4	201.4	38.7	270.5	3.1	3.1	1.0	9.4	-	10.5
April	37.8	39.5	30.1	205.9	41.3	277.3	3.1	3.1	1.0	9.7	-	10.7
May	37.6	39.2	30.9	204.7	42.4	278.0	3.2	3.2	1.0	9.9	-	10.9
June	38.4	39.8	30.5	207.4	44.9	282.9	3.2	3.2	0.9	10.3	-	11.3
July	37.4	38.9	29.3	209.4	47.4	286.2	3.1	3.1	0.9	10.7	-	11.6
August	36.9	38.4	28.7	207.6	50.1	286.5	3.1	3.1	0.9	10.4	-	11.3
September	35.9	37.3	27.8	204.1	40.0	271.8	3.0	3.0	0.8	10.2	-	11.1
October	35.8	37.1	27.8	201.9	38.9	268.6	3.0	3.0	0.8	9.9	-	10.7
November	35.2	36.6	27.1	200.6	37.4	265.0	2.9	2.9	0.8	9.6	-	10.4
December	35.0	36.4	26.8	204.5	37.7	269.0	2.8	2.9	0.8	9.7	-	10.5
2010	36.6	38.1	29.0	202.2	41.4	272.5	3.0	3.1	0.9	9.9	-	10.8
2011												
January	33.4	34.7	25.2	190.1	32.9	248.2	2.6	2.6	0.7	8.7	-	9.4
February	33.8	35.2	25.7	199.1	36.5	261.3	2.7	2.7	0.7	9.1	-	9.8
March	34.6	36.0	25.8	203.1	29.2	258.2	2.6	2.6	0.7	8.3	-	9.0
April	34.6	36.0	25.6	204.8	26.7	257.1	2.6	2.6	0.7	8.1	-	8.8
May	34.4	35.7	24.9	204.8	31.4	261.1	2.5	2.5	0.6	8.4	-	9.0
June	35.3	36.7	24.9	210.7	30.5	266.1	2.6	2.6	0.7	8.7	-	9.4
July	35.2	36.5	25.1	208.1	26.6	259.9	2.7	2.7	0.7	8.8	-	9.5
August	35.1	36.5	24.9	212.6	31.8	269.2	2.6	2.6	0.7	8.7	-	9.4
September	34.8	36.1	24.3	206.4	32.1	262.8	2.6	2.6	0.6	8.1	-	8.8
October	25.6	26.9	24.3	204.1	25.9	254.3	2.1	2.2	0.6	8.2	-	8.9
November	24.7	26.1	23.8	206.7	28.5	259.0	2.1	2.1	0.6	8.3	-	9.0
December	24.2	25.6	24.1	207.5	34.1	265.8	2.0	2.0	0.6	8.5	-	9.1
2011	32.1	33.5	24.9	204.9	30.5	260.2	2.5	2.5	0.7	8.5	-	9.2
2012												
January	22.7	24.0	23.0	196.1	28.5	247.7	1.9	1.9	0.6	7.8	-	8.4
February	23.6	25.0	24.2	208.2	24.5	256.9	1.9	1.9	0.6	8.2	-	8.8
March	23.5	25.0	23.9	209.2	25.0	258.2	1.9	1.9	0.6	8.0	-	8.6
April	23.7	25.2	23.4	210.2	22.3	255.9	1.9	1.9	0.6	8.1	-	8.7
May	24.1	25.6	23.4	213.8	R24.1	R261.3	2.0	2.0	0.6	R8.8	-	R9.4
June	24.8	26.5	23.3	219.2	28.1	270.5	2.0	2.1	0.6	9.0	-	9.6

See footnotes at end of table.

Table 7. U.S. Refiner Motor Gasoline Volumes by Grade and Sales Type

(Million Gallons per Day) — Continued

Year Month	Premium						All Grades					
	Sales to End Users		Sales for Resale				Sales to End Users		Sales for Resale			
	Through Retail Outlets	Total ^a	DTW	Rack	Bulk	Total	Through Retail Outlets	Total ^a	DTW	Rack	Bulk	Total
1985	9.2	10.0	-	-	-	38.0	50.5	57.5	-	-	-	256.9
1986	9.0	9.8	-	-	-	45.1	54.2	61.2	-	-	-	257.2
1987	11.2	11.6	-	-	-	53.0	55.7	61.0	-	-	-	257.2
1988	13.8	14.5	-	-	-	62.4	56.7	61.0	-	-	-	263.7
1989	13.5	14.2	-	-	-	60.8	57.5	61.2	-	-	-	260.7
1990	11.2	11.7	-	-	-	53.7	57.4	60.3	-	-	-	264.8
1991	10.5	10.9	-	-	-	48.3	58.4	61.2	-	-	-	261.3
1992	10.3	10.7	-	-	-	51.7	56.4	59.0	-	-	-	265.4
1993	10.3	10.6	-	-	-	52.8	54.9	57.2	-	-	-	266.9
1994	10.0	10.3	22.6	29.9	3.2	55.7	52.8	55.0	83.1	165.9	27.7	276.7
1995	9.8	10.2	20.8	31.5	4.2	56.4	53.7	55.9	77.9	174.8	36.0	288.8
1996	8.4	8.8	18.2	28.3	4.1	50.5	55.1	57.5	77.5	176.8	39.3	293.6
1997	8.4	8.8	16.9	27.6	4.0	48.5	58.7	61.1	75.1	179.6	38.0	292.7
1998	9.6	9.9	17.4	30.9	4.3	52.7	61.4	63.3	73.0	186.1	41.4	300.4
1999	8.7	8.9	16.1	31.0	5.7	52.7	60.2	62.0	72.2	194.6	40.2	306.9
2000	6.9	7.1	13.0	24.4	4.7	42.1	59.1	60.9	69.4	197.9	37.1	304.4
2001	7.1	7.3	12.3	24.6	3.7	40.6	60.4	62.0	67.4	201.1	36.7	305.2
2002	7.5	7.8	12.5	25.2	4.1	41.8	62.1	63.6	66.9	201.7	43.3	311.8
2003	7.1	7.3	10.8	23.9	3.3	38.1	62.2	63.8	59.8	208.4	43.4	311.6
2004	5.9	6.1	9.4	22.3	2.3	34.0	56.9	58.4	54.8	217.1	44.5	316.4
2005	5.2	5.4	8.0	20.9	3.0	31.9	57.5	59.0	48.7	224.2	48.9	321.8
2006	4.9	5.1	7.1	20.3	2.4	29.7	58.6	60.0	44.3	228.0	43.2	315.6
2007	4.7	4.8	6.9	20.2	2.4	29.5	56.7	57.7	43.0	227.6	49.2	319.8
2008	4.2	4.3	5.9	17.1	1.9	25.0	53.9	55.1	39.9	220.8	45.7	306.4
2009	4.0	4.1	6.3	19.1	2.1	27.4	48.0	49.8	39.9	226.1	41.4	307.4
2010												
January	3.3	3.5	5.5	17.4	2.1	25.0	42.4	44.0	35.3	209.7	36.9	281.9
February	3.3	3.4	5.8	18.9	2.1	26.8	42.6	44.2	36.7	223.1	45.1	305.0
March	3.4	3.6	5.9	19.8	2.4	28.1	43.7	45.5	37.4	230.6	41.1	309.1
April	3.5	3.6	5.9	20.4	1.9	28.3	44.4	46.2	37.1	236.0	43.2	316.3
May	3.6	3.7	6.2	21.1	1.9	29.2	44.3	46.0	38.1	235.7	44.3	318.1
June	3.6	3.7	6.1	21.9	1.9	30.0	45.2	46.8	37.6	239.7	46.8	324.2
July	3.6	3.7	5.9	22.8	1.6	30.2	44.1	45.8	36.1	242.9	49.0	328.0
August	3.5	3.7	5.8	22.7	2.0	30.5	43.5	45.1	35.4	240.7	52.2	328.2
September	3.5	3.6	5.7	22.5	2.3	30.5	42.4	43.9	34.3	236.8	42.2	313.3
October	3.4	3.5	5.5	21.5	1.5	28.5	42.1	43.6	34.1	233.3	40.3	307.7
November	3.2	3.4	5.3	20.9	3.1	29.3	41.4	42.9	33.2	231.1	40.5	304.8
December	3.1	3.2	5.1	20.5	2.2	27.7	40.9	42.4	32.7	234.7	39.9	307.2
2010	3.4	3.5	5.7	20.9	2.1	28.7	43.1	44.7	35.7	232.9	43.5	312.0
2011												
January	2.9	3.0	4.7	18.6	2.6	25.9	38.9	40.3	30.7	217.3	35.5	283.5
February	3.0	3.1	4.8	19.6	1.8	26.2	39.5	40.9	31.2	227.8	38.3	297.3
March	2.9	3.0	4.4	18.9	1.1	24.4	40.1	41.6	30.9	230.3	30.3	291.5
April	2.9	2.9	4.4	18.8	1.8	24.9	40.1	41.6	30.7	231.7	28.5	290.8
May	2.9	3.0	4.4	19.5	1.9	25.7	39.8	41.2	29.9	232.6	33.3	295.8
June	3.1	3.2	4.6	21.1	1.6	27.2	41.0	42.5	30.1	240.5	32.0	302.7
July	3.2	3.3	4.7	21.4	2.3	28.3	41.1	42.4	30.4	238.3	28.9	297.7
August	3.1	3.2	4.7	21.9	1.4	28.0	40.9	42.4	30.2	243.2	33.1	306.6
September	3.1	3.2	4.5	21.1	1.9	27.5	40.5	42.0	29.5	235.6	34.0	299.1
October	2.8	2.9	4.5	20.8	1.0	26.3	30.6	32.0	29.4	233.1	26.9	289.5
November	2.7	2.8	4.5	21.0	3.3	28.8	29.4	31.0	28.9	236.0	31.8	296.7
December	2.6	2.7	4.6	21.3	4.0	29.8	28.8	30.4	29.4	237.3	38.1	304.8
2011	2.9	3.0	4.6	20.3	2.0	26.9	37.5	39.0	30.1	233.7	32.5	296.3
2012												
January	2.4	2.5	4.3	19.5	2.1	26.0	27.0	28.4	28.0	223.5	30.6	282.1
February	2.4	2.6	4.4	20.5	2.7	27.6	27.9	29.5	29.3	236.8	27.3	293.4
March	2.4	2.5	4.2	20.1	2.6	27.0	27.9	29.5	28.8	237.4	27.6	293.8
April	2.5	2.6	4.3	20.6	3.2	28.1	28.0	29.7	28.3	238.9	25.5	292.7
May	2.6	2.7	4.3	22.5	3.6	R30.5	28.6	30.3	28.3	R245.2	R27.8	301.2
June	2.7	2.9	4.4	23.7	3.0	31.1	29.6	31.5	28.3	251.8	31.1	311.1

Dash (-) = No data reported.

NA = Not available.

^a Includes sales through retail outlets as well as all direct sales to end users that were not made through company-operated retail outlets, e.g., sales to agricultural customers, commercial sales, and industrial sales.

^R Revised data.

Notes: Data for the 4th quarter of 1993 were derived from two separate survey systems. The DTW, Rack, and Bulk components were derived from the revised EIA-782 survey system, while the End-Use and Average Resale categories were derived from the predecessor EIA-782 survey system. Therefore, the DTW, Rack, and Bulk components are not consistent with the Average Resale category. Beginning January 1994, all data are from the revised EIA-782 survey system and are consistent.

Note: Motor gasoline averages and totals prior to October 1993 include leaded gasoline.

Notes: Values shown for the current month are preliminary. Values shown for previous months are revised. Data are final upon publication in the *Petroleum Marketing Annual*. Totals may not equal the sum of the components due to rounding.

Source: Energy Information Administration Form EIA-782A, "Refiners'/Gas Plant Operators' Monthly Petroleum Product Sales Report."

Table 8. U.S. Refiner Conventional Motor Gasoline Prices by Grade and Sales Type
(Dollars per Gallon Excluding Taxes)

Year Month	Regular						Midgrade					
	Sales to End Users		Sales for Resale				Sales to End Users		Sales for Resale			
	Through Retail Outlets	Average ^a	DTW	Rack	Bulk	Average	Through Retail Outlets	Average ^a	DTW	Rack	Bulk	Average
1994	0.687	0.681	0.636	0.545	0.500	0.558	0.784	0.778	0.694	NA	NA	0.627
1995	0.710	0.704	0.651	0.570	0.525	0.573	0.800	0.794	0.711	0.610	NA	0.637
1996	0.797	0.791	0.743	0.665	0.607	0.664	0.884	0.878	0.801	0.700	NA	0.726
1997	0.781	0.775	0.719	0.649	0.600	0.648	0.874	0.869	0.783	0.685	W	0.708
1998	0.611	0.606	0.551	0.473	0.439	0.473	0.704	0.700	0.613	0.511	W	0.533
1999	0.710	0.706	0.676	0.595	0.520	0.590	0.802	0.799	0.734	0.628	-	0.650
2000	1.045	1.040	0.994	0.913	0.844	0.909	1.136	1.133	1.052	0.945	-	0.964
2001	0.961	0.958	0.914	0.835	0.761	0.830	1.058	1.055	0.984	0.872	-	0.889
2002	0.893	0.891	0.836	0.791	0.723	0.782	0.985	0.981	0.906	0.829	-	0.839
2003	1.081	1.078	1.040	0.952	0.871	0.942	1.173	1.168	1.108	0.994	-	1.006
2004	1.368	1.364	1.325	1.244	1.170	1.234	1.454	1.450	1.391	1.287	-	1.296
2005	1.780	1.776	1.709	1.643	1.555	1.629	1.861	1.857	1.781	1.675	-	1.682
2006	2.062	2.062	2.054	1.925	1.864	1.918	2.166	2.164	2.134	1.972	-	1.980
2007	2.292	2.289	2.242	2.153	2.065	2.138	2.392	2.390	2.298	2.222	-	2.225
2008	2.717	2.714	2.698	2.560	2.513	2.555	2.829	2.829	2.734	2.581	-	2.586
2009	1.825	1.821	1.817	1.735	1.657	1.723	1.936	1.936	1.877	1.751	-	1.755
2010												
January	2.181	2.176	2.151	2.068	2.026	2.063	2.295	2.295	2.189	2.084	-	2.087
February	2.116	2.110	2.099	2.005	1.955	1.997	2.237	2.238	2.158	2.016	-	2.020
March	2.252	2.248	2.237	2.171	2.141	2.168	2.368	2.369	2.280	2.196	-	2.198
April	2.324	2.320	2.322	2.243	2.195	2.236	2.440	2.441	2.369	2.266	-	2.269
May	2.294	2.287	2.262	2.105	2.117	2.112	2.417	2.418	2.399	2.114	-	2.119
June	2.181	2.178	2.202	2.078	1.988	2.064	2.296	2.297	2.352	2.094	-	2.098
July	2.175	2.171	2.229	2.076	2.001	2.065	2.297	2.297	2.391	2.095	-	2.101
August	2.178	2.175	2.249	2.066	1.988	2.054	2.308	2.308	2.394	2.088	-	2.094
September	2.170	2.168	2.174	2.079	1.967	2.061	2.298	2.298	2.298	2.125	-	2.128
October	2.267	2.263	2.265	2.178	2.068	2.160	2.383	2.383	2.389	2.212	-	2.215
November	2.319	2.315	2.314	2.216	2.113	2.201	2.431	2.431	2.443	2.241	-	2.245
December	2.462	2.456	2.410	2.362	2.268	2.347	2.564	2.564	2.538	2.390	-	2.392
2010	2.244	2.239	2.244	2.139	2.065	2.128	2.361	2.361	2.336	2.160	-	2.164
2011												
January	2.568	2.561	2.491	2.450	2.398	2.442	2.678	2.678	2.614	2.502	-	2.504
February	2.657	2.651	2.611	2.559	2.469	2.545	2.772	2.772	2.746	2.603	-	2.606
March	3.013	3.005	2.959	2.898	2.816	2.888	3.127	3.127	3.107	2.925	-	2.928
April	3.282	3.277	3.181	3.176	3.082	3.164	3.381	3.382	3.339	3.213	-	3.215
May	3.360	3.353	3.208	3.130	3.091	3.126	3.466	3.466	3.310	3.200	-	3.202
June	3.119	3.114	3.047	2.921	2.879	2.919	3.241	3.241	3.131	2.953	-	2.956
July	3.124	3.123	3.006	3.041	2.908	3.023	3.225	3.226	3.073	3.086	-	3.085
August	3.091	3.086	2.979	2.925	2.872	2.919	3.200	3.200	3.060	2.979	-	2.981
September	3.023	3.016	3.040	2.854	2.807	2.852	3.159	3.160	3.172	2.907	-	2.911
October	2.903	2.891	2.937	2.763	2.704	2.761	3.050	3.050	3.096	2.808	-	2.813
November	2.846	2.831	2.832	2.655	2.592	2.652	2.985	2.980	2.982	2.682	-	2.687
December	2.759	2.743	2.689	2.574	2.536	2.571	2.868	2.861	2.818	2.584	-	2.588
2011	2.998	2.989	2.916	2.834	2.751	2.825	3.105	3.104	3.033	2.869	-	2.872
2012												
January	2.859	2.844	2.756	2.697	2.692	2.698	2.944	2.944	2.871	2.646	-	2.650
February	3.006	2.989	2.935	2.868	2.899	2.873	3.104	3.105	3.050	2.861	-	2.864
March	3.301	3.291	3.231	3.140	3.116	3.140	3.402	3.401	3.365	3.131	-	3.135
April	3.337	3.319	3.284	3.121	3.158	3.130	3.489	3.484	3.415	3.097	-	3.102
May	R 3.191	3.174	3.272	R 2.920	R 2.918	2.931	R 3.337	R 3.337	3.449	R 2.908	-	R 2.916
June	2.990	2.969	2.956	2.688	2.647	2.691	3.141	3.139	3.109	2.780	-	2.785

See footnotes at end of table.

Table 8. U.S. Refiner Conventional Motor Gasoline Prices by Grade and Sales Type
(Dollars per Gallon Excluding Taxes) — Continued

Year Month	Premium						All Grades					
	Sales to End Users		Sales for Resale				Sales to End Users		Sales for Resale			
	Through Retail Outlets	Average ^a	DTW	Rack	Bulk	Average	Through Retail Outlets	Average ^a	DTW	Rack	Bulk	Average
1994	0.863	0.855	0.778	0.638	0.555	0.682	0.736	0.729	0.683	0.565	0.507	0.589
1995	0.877	0.868	0.790	0.665	0.568	0.684	0.753	0.746	0.693	0.590	0.530	0.598
1996	0.960	0.951	0.869	0.755	0.645	0.767	0.834	0.827	0.778	0.682	0.610	0.685
1997	0.954	0.946	0.856	0.742	0.641	0.753	0.819	0.813	0.756	0.666	0.604	0.668
1998	0.783	0.776	0.684	W	0.474	0.576	0.652	0.647	0.589	0.491	0.442	0.494
1999	0.872	0.865	0.801	0.679	0.558	0.681	0.748	0.743	0.711	0.611	0.525	0.609
2000	1.211	1.201	1.120	1.002	0.897	1.005	1.076	1.071	1.023	0.926	0.849	0.925
2001	1.129	1.123	1.042	0.922	0.806	0.923	0.992	0.989	0.943	0.848	0.765	0.845
2002	1.064	1.058	0.978	0.889	0.788	0.886	0.924	0.921	0.867	0.806	0.729	0.798
2003	1.253	1.245	1.178	1.051	0.925	1.050	1.109	1.105	1.067	0.965	0.874	0.957
2004	1.544	1.534	1.466	1.347	1.248	1.348	1.391	1.387	1.348	1.257	1.174	1.247
2005	1.966	1.954	1.857	1.747	1.652	1.746	1.801	1.797	1.732	1.654	1.560	1.641
2006	2.274	2.265	2.215	2.070	1.981	2.071	2.084	2.082	2.077	1.940	1.869	1.933
2007	2.502	2.494	2.415	2.328	2.181	2.317	2.313	2.309	2.267	2.172	2.070	2.156
2008	2.928	2.921	2.851	2.726	2.650	2.726	2.736	2.733	2.716	2.573	2.518	2.568
2009	2.062	2.054	2.014	1.927	1.802	1.918	1.845	1.841	1.843	1.750	1.664	1.738
2010												
January	2.431	2.413	2.354	2.250	2.055	2.231	2.201	2.196	2.176	2.082	2.027	2.076
February	2.372	2.360	2.312	2.193	2.008	2.178	2.137	2.131	2.127	2.020	1.957	2.011
March	2.499	2.489	2.437	2.360	2.241	2.349	2.272	2.268	2.262	2.187	2.146	2.182
April	2.568	2.561	2.519	2.435	2.294	2.425	2.344	2.340	2.346	2.259	2.199	2.251
May	2.540	2.530	2.464	2.299	2.250	2.303	2.315	2.308	2.290	2.121	2.122	2.127
June	2.427	2.419	2.408	2.276	2.087	2.265	2.202	2.198	2.231	2.095	1.991	2.080
July	2.422	2.415	2.436	2.276	2.136	2.275	2.197	2.192	2.258	2.094	2.005	2.082
August	2.432	2.424	2.444	2.269	2.047	2.255	2.200	2.197	2.276	2.084	1.990	2.071
September	2.418	2.408	2.364	2.270	2.066	2.254	2.192	2.189	2.200	2.098	1.971	2.079
October	2.512	2.495	2.460	2.369	2.189	2.360	2.287	2.283	2.291	2.195	2.072	2.177
November	2.564	2.555	2.507	2.405	2.238	2.388	2.339	2.335	2.339	2.232	2.120	2.217
December	2.698	2.687	2.607	2.544	2.392	2.528	2.480	2.474	2.435	2.377	2.275	2.362
2010	2.489	2.478	2.443	2.329	2.172	2.318	2.264	2.259	2.270	2.155	2.069	2.143
2011												
January	2.810	2.799	2.687	2.626	2.477	2.605	2.586	2.579	2.516	2.465	2.404	2.457
February	2.896	2.885	2.807	2.744	2.584	2.730	2.676	2.669	2.636	2.574	2.475	2.560
March	3.257	3.246	3.161	3.089	2.998	3.087	3.031	3.023	2.983	2.912	2.822	2.903
April	3.510	3.505	3.385	3.368	3.265	3.358	3.298	3.293	3.206	3.191	3.093	3.179
May	3.588	3.578	3.392	3.316	3.254	3.312	3.376	3.370	3.230	3.146	3.100	3.142
June	3.362	3.351	3.225	3.121	2.984	3.114	3.138	3.133	3.068	2.938	2.884	2.935
July	3.353	3.352	3.182	3.248	3.049	3.220	3.142	3.140	3.027	3.059	2.920	3.042
August	3.330	3.326	3.156	3.147	3.030	3.138	3.109	3.104	3.001	2.945	2.879	2.938
September	3.281	3.271	3.240	3.086	2.962	3.079	3.043	3.037	3.066	2.874	2.816	2.871
October	3.156	3.141	3.146	2.984	2.881	2.985	2.927	2.915	2.963	2.782	2.711	2.780
November	3.103	3.081	3.033	2.863	2.720	2.843	2.870	2.854	2.858	2.672	2.607	2.669
December	2.999	2.977	2.888	2.769	2.713	2.762	2.780	2.763	2.714	2.589	2.555	2.587
2011	3.230	3.219	3.105	3.035	2.864	3.018	3.016	3.008	2.939	2.851	2.758	2.841
2012												
January	3.090	3.075	2.952	2.898	2.880	2.898	2.877	2.863	2.780	2.710	2.705	2.712
February	3.252	3.236	3.132	3.068	3.151	3.083	3.026	3.011	2.959	2.882	2.925	2.890
March	3.530	3.517	3.437	3.345	3.283	3.340	3.320	3.310	3.256	3.154	3.132	3.155
April	3.594	3.571	3.486	3.354	3.409	3.369	3.361	3.343	3.308	3.137	3.192	3.148
May	R3.434	3.411	3.489	R3.177	3.106	R3.175	R3.215	R3.197	3.300	R2.940	R2.946	R2.952
June	3.218	3.193	3.157	2.960	3.008	2.975	3.013	2.992	2.982	2.715	2.687	2.719

Dash (-) = No data reported.

NA = Not available.

W = Withheld to avoid disclosure of individual company data.

^a Includes sales through retail outlets as well as all direct sales to end users that were not made through company-operated retail outlets, e.g., sales to agricultural customers, commercial sales, and industrial sales.

^R Revised data.

Notes: The 4th quarter of 1993 was a transitional period between the predecessor EIA-782 survey system and the revised EIA-782 survey system. The revised survey system contains additional product and sales categories, which may not be consistent with categories derived from the predecessor survey system. Beginning January 1994 all data are from the revised survey system and are consistent.

Note: Beginning January 2007, oxygenated gasoline is included in conventional gasoline.

Notes: Values shown for the current month are preliminary. Values shown for previous months are revised. Data are final upon publication in the *Petroleum Marketing Annual*.

Source: Energy Information Administration Form EIA-782A, "Refiners'/Gas Plant Operators' Monthly Petroleum Product Sales Report."

Table 9. U.S. Refiner Conventional Motor Gasoline Volumes by Grade and Sales Type
(Million Gallons per Day)

Year Month	Regular						Midgrade					
	Sales to End Users		Sales for Resale				Sales to End Users		Sales for Resale			
	Through Retail Outlets	Total ^a	DTW	Rack	Bulk	Total	Through Retail Outlets	Total ^a	DTW	Rack	Bulk	Total
1994	29.7	31.2	36.1	113.5	22.8	172.4	7.6	7.8	10.1	14.6	0.1	24.8
1995	24.0	25.3	19.4	105.1	26.0	150.5	6.0	6.3	5.1	13.6	0.1	18.7
1996	24.1	25.4	17.8	108.5	27.1	153.4	5.7	5.9	4.4	12.9	NA	17.3
1997	25.0	26.4	16.4	110.9	26.4	153.7	5.7	5.9	3.9	12.7	W	16.6
1998	25.4	26.6	13.7	112.0	28.8	154.5	6.0	6.1	3.4	12.5	W	15.8
1999	25.0	26.0	13.4	117.4	24.9	155.8	5.9	6.0	3.1	12.2	-	15.3
2000	26.0	27.1	12.8	125.7	23.9	162.4	4.9	5.0	2.3	10.8	-	13.1
2001	26.6	27.4	12.0	128.5	24.0	164.5	4.6	4.7	1.9	10.2	-	12.0
2002	27.2	28.0	11.3	127.9	31.0	170.2	4.7	4.8	1.6	10.4	-	11.9
2003	27.5	28.3	10.3	131.1	32.4	173.8	4.3	4.4	1.2	10.0	-	11.2
2004	26.5	27.3	9.7	136.7	36.1	182.5	3.5	3.6	0.9	9.8	-	10.8
2005	27.4	28.3	9.0	140.1	36.4	185.5	3.1	3.2	0.7	10.8	-	11.5
2006	28.9	29.8	7.3	143.7	37.4	188.4	2.9	2.9	0.5	9.3	-	9.7
2007	29.6	30.2	7.4	150.3	43.0	200.7	2.6	2.6	0.5	10.3	-	10.8
2008	28.9	29.8	7.1	144.5	39.5	191.1	2.1	2.2	0.4	9.9	-	10.3
2009	26.5	27.8	6.6	147.0	35.9	189.5	1.9	1.9	0.3	9.1	-	9.4
2010												
January	23.9	25.1	5.4	134.4	31.0	170.7	1.6	1.6	0.2	7.8	-	8.0
February	24.4	25.7	5.8	143.3	39.1	188.2	1.7	1.7	0.3	8.5	-	8.8
March	25.1	26.5	5.8	148.1	34.6	188.4	1.7	1.7	0.2	8.3	-	8.5
April	25.7	27.1	6.0	151.3	37.4	194.7	1.7	1.8	0.2	8.5	-	8.8
May	25.6	27.0	6.1	149.8	38.0	193.9	1.8	1.8	0.2	8.7	-	8.9
June	26.3	27.5	6.1	151.9	40.8	198.9	1.8	1.8	0.2	9.1	-	9.3
July	25.6	26.9	6.2	153.6	42.6	202.4	1.8	1.8	0.2	9.4	-	9.6
August	25.2	26.4	6.0	151.0	44.9	201.8	1.7	1.7	0.2	9.1	-	9.3
September	24.7	25.8	5.9	147.7	35.9	189.5	1.7	1.7	0.2	9.0	-	9.1
October	24.6	25.7	5.9	146.7	35.3	187.9	1.7	1.7	0.2	8.7	-	8.8
November	24.2	25.3	5.7	145.8	33.4	184.9	1.6	1.6	0.2	8.4	-	8.6
December	24.0	25.1	5.8	148.0	32.9	186.7	1.6	1.6	0.1	8.6	-	8.7
2010	24.9	26.2	5.9	147.6	37.1	190.7	1.7	1.7	0.2	8.7	-	8.9
2011												
January	22.8	23.9	5.4	135.3	29.0	169.7	1.5	1.5	0.1	7.5	-	7.7
February	23.1	24.2	5.6	143.0	31.5	180.1	1.5	1.5	0.1	8.0	-	8.1
March	23.6	24.8	5.7	145.9	25.4	177.0	1.4	1.5	0.1	7.2	-	7.4
April	23.5	24.7	5.6	148.5	22.8	176.8	1.4	1.4	0.1	7.1	-	7.2
May	23.5	24.5	5.3	147.3	27.4	179.9	1.4	1.4	0.1	7.3	-	7.4
June	24.0	25.2	5.2	151.9	25.6	182.7	1.4	1.4	0.1	7.6	-	7.7
July	23.8	24.9	5.4	151.0	22.0	178.3	1.4	1.4	0.1	7.7	-	7.8
August	23.7	24.8	5.3	153.8	27.3	186.4	1.4	1.4	0.1	7.6	-	7.7
September	23.4	24.6	5.2	148.0	28.4	181.5	1.4	1.4	0.1	7.0	-	7.1
October	15.0	16.2	5.3	146.1	21.5	172.9	1.0	1.0	0.1	7.2	-	7.3
November	14.7	15.9	5.2	148.4	24.6	178.2	1.0	1.0	0.1	7.3	-	7.4
December	14.5	15.7	5.2	148.1	30.7	184.0	1.0	1.0	0.1	7.4	-	7.5
2011	21.3	22.4	5.4	147.3	26.3	179.0	1.3	1.3	0.1	7.4	-	7.5
2012												
January	13.7	14.8	4.9	140.1	24.8	169.8	0.9	0.9	0.1	6.8	-	6.9
February	14.3	15.5	5.1	148.8	20.4	174.3	0.9	0.9	0.1	7.1	-	7.2
March	14.4	15.6	5.2	150.0	21.0	176.2	0.9	0.9	0.1	7.0	-	7.1
April	14.4	15.7	5.1	151.0	19.0	175.1	0.9	0.9	0.1	7.1	-	7.2
May	14.8	16.0	5.3	151.7	19.6	176.6	1.0	1.0	0.1	7.8	-	7.9
June	15.3	16.7	5.3	155.2	22.5	183.0	1.0	1.0	0.1	7.8	-	8.0

See footnotes at end of table.

Table 9. U.S. Refiner Conventional Motor Gasoline Volumes by Grade and Sales Type
(Million Gallons per Day) — Continued

Year Month	Premium						All Grades					
	Sales to End Users		Sales for Resale				Sales to End Users		Sales for Resale			
	Through Retail Outlets	Total ^a	DTW	Rack	Bulk	Total	Through Retail Outlets	Total ^a	DTW	Rack	Bulk	Total
1994	8.5	8.9	16.5	28.0	2.8	47.2	45.8	47.9	62.7	156.0	25.8	244.5
1995	6.2	6.4	7.7	25.1	2.9	35.6	36.2	38.0	32.1	143.8	28.9	204.8
1996	4.9	5.1	5.8	22.5	2.5	30.8	34.7	36.5	28.1	143.8	29.6	201.5
1997	4.8	5.0	5.1	21.9	2.5	29.5	35.4	37.2	25.4	145.6	28.9	199.8
1998	5.5	5.7	4.7	W	2.7	31.9	36.9	38.5	21.8	148.9	31.5	202.2
1999	5.0	5.2	4.3	24.1	3.8	32.2	35.9	37.2	20.8	153.7	28.7	203.3
2000	3.7	3.9	3.1	18.6	2.8	24.5	34.7	35.9	18.2	155.1	26.7	200.0
2001	3.7	3.8	2.8	18.7	2.7	24.1	35.0	36.0	16.7	157.4	26.7	200.7
2002	3.8	4.0	2.6	19.1	3.0	24.7	35.8	36.8	15.5	157.4	34.0	206.9
2003	3.4	3.5	2.1	17.5	2.4	21.9	35.1	36.3	13.6	158.6	34.8	207.0
2004	2.6	2.8	1.6	15.8	1.7	19.2	32.6	33.7	12.3	162.3	37.8	212.4
2005	2.3	2.4	1.4	14.4	1.9	17.7	32.8	33.8	11.0	165.4	38.2	214.6
2006	2.1	2.2	1.1	13.9	1.7	16.6	33.9	35.0	8.8	166.8	39.1	214.7
2007	2.1	2.2	1.1	14.4	2.0	17.4	34.3	35.0	9.0	175.0	44.9	228.9
2008	1.8	1.9	0.9	11.7	1.5	14.2	32.9	33.9	8.4	166.2	41.0	215.6
2009	1.7	1.8	0.9	12.9	1.8	15.6	30.0	31.5	7.8	169.0	37.7	214.5
2010												
January	1.4	1.5	0.7	11.4	1.8	13.9	26.9	28.3	6.3	153.6	32.7	192.6
February	1.5	1.6	0.8	12.5	1.8	15.0	27.5	28.9	6.9	164.3	40.8	212.0
March	1.5	1.6	0.8	12.9	2.0	15.7	28.3	29.8	6.8	169.3	36.5	212.6
April	1.5	1.6	0.8	13.3	1.6	15.7	29.0	30.5	7.1	173.1	39.0	219.2
May	1.6	1.7	0.9	13.7	1.5	16.1	29.0	30.4	7.1	172.2	39.4	218.8
June	1.6	1.7	0.9	14.4	1.5	16.8	29.7	31.0	7.2	175.4	42.4	224.9
July	1.6	1.7	0.9	14.9	1.2	17.0	29.0	30.4	7.2	178.0	43.9	229.0
August	1.6	1.7	0.9	14.7	1.8	17.3	28.6	29.8	7.0	174.8	46.6	228.4
September	1.6	1.7	0.8	14.2	1.7	16.8	27.9	29.1	6.9	170.9	37.6	215.4
October	1.5	1.6	0.8	13.6	1.2	15.6	27.8	29.0	6.9	168.9	36.5	212.3
November	1.4	1.5	0.8	13.1	2.0	16.0	27.3	28.5	6.7	167.4	35.4	209.5
December	1.4	1.4	0.8	12.8	2.0	15.5	27.0	28.1	6.7	169.3	34.9	211.0
2010	1.5	1.6	0.8	13.5	1.7	15.9	28.2	29.5	6.9	169.8	38.8	215.5
2011												
January	1.2	1.3	0.7	11.2	2.3	14.2	25.5	26.7	6.2	154.1	31.3	191.7
February	1.3	1.4	0.7	12.0	1.5	14.3	25.9	27.1	6.4	163.0	33.0	202.4
March	1.3	1.3	0.7	11.6	0.9	13.2	26.3	27.5	6.5	164.7	26.3	197.5
April	1.2	1.3	0.7	11.7	1.5	13.9	26.2	27.4	6.4	167.2	24.3	197.9
May	1.2	1.3	0.6	12.1	1.6	14.3	26.0	27.2	6.0	166.6	29.0	201.6
June	1.3	1.4	0.7	13.3	1.3	15.2	26.8	28.0	6.0	172.7	26.9	205.6
July	1.4	1.4	0.7	13.6	2.0	16.3	26.7	27.8	6.2	172.2	24.0	202.5
August	1.3	1.4	0.7	13.9	1.3	15.9	26.5	27.7	6.2	175.3	28.6	210.1
September	1.3	1.4	0.7	13.2	1.7	15.5	26.2	27.4	6.0	168.2	30.1	204.2
October	1.1	1.1	0.7	12.8	0.9	14.4	17.1	18.3	6.1	166.1	22.4	194.6
November	1.0	1.1	0.7	12.9	3.1	16.6	16.7	18.0	6.0	168.6	27.7	202.3
December	1.0	1.1	0.7	12.9	3.6	17.2	16.5	17.8	6.0	168.4	34.3	208.7
2011	1.2	1.3	0.7	12.6	1.8	15.1	23.8	25.1	6.2	167.3	28.1	201.6
2012												
January	0.9	1.0	0.6	11.9	1.9	14.4	15.5	16.6	5.6	158.9	26.6	191.2
February	1.0	1.1	0.7	12.5	2.3	15.5	16.2	17.5	5.9	168.4	22.7	197.1
March	1.0	1.0	0.6	12.4	2.3	15.3	16.2	17.6	6.0	169.4	23.2	198.6
April	1.0	1.1	0.6	12.6	3.0	16.2	16.3	17.7	5.9	170.7	21.9	198.5
May	1.1	1.2	0.7	13.9	3.4	R18.0	16.8	18.1	6.1	R173.4	R23.0	R202.5
June	1.1	1.2	0.7	14.5	2.8	18.0	17.4	19.0	6.1	177.6	25.3	208.9

Dash (-) = No data reported.

NA = Not available.

W = Withheld to avoid disclosure of individual company data.

^a Includes sales through retail outlets as well as all direct sales to end users that were not made through company-operated retail outlets, e.g., sales to agricultural customers, commercial sales, and industrial sales.

^R Revised data.

Notes: The 4th quarter of 1993 was a transitional period between the predecessor EIA-782 survey system and the revised EIA-782 survey system. The revised survey system contains additional product and sales categories, which may not be consistent with categories derived from the predecessor survey system. Beginning January 1994 all data are from the revised survey system and are consistent.

Note: Beginning January 2007, oxygenated gasoline is included in conventional gasoline.

Notes: Values shown for the current month are preliminary. Values shown for previous months are revised. Data are final upon publication in the *Petroleum Marketing Annual*. Totals may not equal the sum of the components due to rounding.

Source: Energy Information Administration Form EIA-782A, "Refiners/Gas Plant Operators' Monthly Petroleum Product Sales Report."

Table 10. U.S. Refiner Reformulated Motor Gasoline Prices by Grade and Sales Type
(Dollars per Gallon Excluding Taxes)

Year Month	Regular						Midgrade					
	Sales to End Users		Sales for Resale				Sales to End Users		Sales for Resale			
	Through Retail Outlets	Average ^a	DTW	Rack	Bulk	Average	Through Retail Outlets	Average ^a	DTW	Rack	Bulk	Average
1994	0.764	0.758	0.720	0.569	0.543	0.638	0.879	0.873	0.770	0.628	W	0.728
1995	0.749	0.744	0.707	0.605	0.573	0.650	0.836	0.833	0.753	0.651	-	0.723
1996	0.834	0.830	0.788	0.698	0.677	0.738	0.924	0.921	0.837	0.741	W	0.809
1997	0.830	0.828	0.787	0.682	0.668	0.731	0.928	0.925	0.840	0.725	W	0.807
1998	0.668	0.665	0.616	0.509	0.484	0.557	0.769	0.767	0.673	0.553	W	0.638
1999	0.804	0.800	0.752	0.642	0.601	0.686	0.895	0.892	0.807	0.676	NA	0.767
2000	1.126	1.123	1.058	0.978	0.953	1.012	1.219	1.217	1.114	1.014	-	1.085
2001	1.059	1.056	1.001	0.893	0.856	0.938	1.166	1.163	1.061	0.942	-	1.027
2002	0.946	0.944	0.906	0.834	0.779	0.861	1.052	1.050	0.988	0.875	-	0.958
2003	1.196	1.192	1.168	1.006	0.962	1.069	1.293	1.290	1.224	1.047	-	1.165
2004	1.472	1.470	1.447	1.299	1.248	1.353	1.572	1.570	1.494	1.340	-	1.436
2005	1.850	1.848	1.787	1.682	1.619	1.711	1.945	1.944	1.834	1.726	-	1.789
2006	2.166	2.164	2.097	2.002	1.885	2.030	2.275	2.274	2.170	2.078	-	2.129
2007	2.362	2.360	2.288	2.186	2.175	2.221	2.490	2.489	2.368	2.256	-	2.316
2008	2.812	2.810	2.703	2.553	2.642	2.607	2.934	2.934	2.788	2.652	-	2.721
2009	1.927	1.925	1.878	1.770	1.782	1.806	2.066	2.066	1.981	1.855	-	1.914
2010												
January	2.279	2.276	2.210	2.079	2.044	2.117	2.422	2.421	2.321	2.154	-	2.228
February	2.210	2.207	2.145	2.017	2.006	2.055	2.359	2.358	2.258	2.095	-	2.168
March	2.324	2.322	2.255	2.183	2.187	2.205	2.464	2.463	2.361	2.268	-	2.306
April	2.390	2.388	2.298	2.261	2.290	2.273	2.521	2.520	2.390	2.341	-	2.361
May	2.403	2.399	2.287	2.135	2.165	2.182	2.539	2.539	2.372	2.206	-	2.274
June	2.313	2.311	2.252	2.123	2.114	2.160	2.462	2.462	2.353	2.191	-	2.254
July	2.310	2.307	2.271	2.110	2.114	2.155	2.462	2.462	2.377	2.175	-	2.247
August	2.311	2.308	2.260	2.073	2.067	2.123	2.464	2.464	2.360	2.140	-	2.216
September	2.235	2.233	2.152	2.058	2.011	2.080	2.384	2.384	2.247	2.135	-	2.174
October	2.348	2.345	2.274	2.200	2.134	2.217	2.493	2.493	2.373	2.268	-	2.306
November	2.422	2.418	2.337	2.253	2.191	2.272	2.565	2.565	2.425	2.321	-	2.358
December	2.554	2.550	2.456	2.390	2.339	2.404	2.696	2.696	2.545	2.464	-	2.493
2010	2.342	2.339	2.265	2.159	2.141	2.188	2.485	2.485	2.362	2.229	-	2.280
2011												
January	2.648	2.644	2.542	2.462	2.415	2.480	2.788	2.788	2.634	2.531	-	2.566
February	2.757	2.754	2.685	2.589	2.516	2.608	2.898	2.898	2.788	2.662	-	2.705
March	3.131	3.127	3.080	2.945	2.831	2.973	3.272	3.272	3.192	3.032	-	3.087
April	3.395	3.393	3.312	3.269	3.156	3.274	3.529	3.529	3.426	3.357	-	3.381
May	3.479	3.475	3.317	3.185	3.146	3.215	3.619	3.618	3.397	3.276	-	3.316
June	3.244	3.241	3.087	3.000	2.990	3.020	3.388	3.388	3.165	3.089	-	3.113
July	3.193	3.191	3.012	3.088	3.047	3.067	3.332	3.332	3.097	3.171	-	3.147
August	3.150	3.147	2.960	2.941	2.972	2.947	3.297	3.297	3.036	3.027	-	3.030
September	3.148	3.144	3.072	2.876	2.793	2.918	3.310	3.310	3.171	2.961	-	3.028
October	3.021	3.016	2.966	2.788	2.749	2.827	3.189	3.188	3.079	2.867	-	2.936
November	2.973	2.966	2.891	2.698	2.670	2.741	3.140	3.139	2.991	2.780	-	2.847
December	2.827	2.821	2.725	2.621	2.611	2.645	2.995	2.994	2.823	2.705	-	2.744
2011	3.089	3.085	2.973	2.874	2.831	2.895	3.233	3.233	3.062	2.954	-	2.990
2012												
January	2.947	2.942	2.844	2.781	2.755	2.794	3.097	3.097	2.955	2.869	-	2.897
February	3.160	3.153	3.096	2.975	2.979	3.003	3.315	3.315	3.212	3.072	-	3.117
March	3.471	3.465	3.394	3.249	3.137	3.276	3.606	3.605	3.512	3.352	-	3.403
April	3.461	3.455	3.316	3.227	3.249	3.248	3.597	3.597	3.403	3.319	-	3.346
May	3.385	3.376	3.324	3.058	3.049	3.114	3.548	3.547	3.446	3.141	-	3.233
June	3.121	3.113	2.998	2.749	2.789	2.802	3.288	3.287	3.075	2.832	-	2.904

See footnotes at end of table.

Table 10. U.S. Refiner Reformulated Motor Gasoline Prices by Grade and Sales Type
(Dollars per Gallon Excluding Taxes) — Continued

Year Month	Premium						All Grades					
	Sales to End Users		Sales for Resale				Sales to End Users		Sales for Resale			
	Through Retail Outlets	Average ^a	DTW	Rack	Bulk	Average	Through Retail Outlets	Average ^a	DTW	Rack	Bulk	Average
1994	0.966	0.958	0.861	0.677	0.558	0.777	0.831	0.824	0.771	0.599	0.547	0.687
1995	0.929	0.924	0.841	0.704	0.616	0.785	0.808	0.803	0.756	0.632	0.582	0.696
1996	1.002	0.998	0.910	0.791	0.709	0.859	0.882	0.878	0.828	0.720	0.682	0.774
1997	1.005	1.003	0.910	0.775	0.686	0.853	0.876	0.874	0.825	0.703	0.671	0.767
1998	0.847	0.845	0.741	W	0.516	0.680	0.717	0.714	0.657	0.529	0.489	0.593
1999	0.966	0.963	0.870	0.717	0.639	0.798	0.845	0.841	0.788	0.658	0.608	0.718
2000	1.297	1.291	1.189	1.064	0.972	1.125	1.164	1.160	1.092	0.993	0.957	1.039
2001	1.239	1.234	1.133	0.983	0.890	1.065	1.100	1.096	1.034	0.909	0.859	0.966
2002	1.124	1.119	1.046	0.930	0.832	0.991	0.987	0.985	0.944	0.851	0.785	0.891
2003	1.366	1.362	1.292	1.099	1.028	1.201	1.233	1.229	1.197	1.021	0.969	1.097
2004	1.655	1.652	1.574	1.399	1.348	1.489	1.510	1.509	1.474	1.313	1.257	1.378
2005	2.031	2.029	1.912	1.791	1.766	1.847	1.883	1.881	1.812	1.697	1.635	1.733
2006	2.369	2.367	2.239	2.149	2.004	2.183	2.202	2.202	2.125	2.020	1.906	2.055
2007	2.601	2.599	2.468	2.367	2.346	2.415	2.404	2.402	2.322	2.208	2.192	2.250
2008	3.003	3.001	2.845	2.700	2.826	2.772	2.845	2.843	2.728	2.569	2.659	2.629
2009	2.177	2.174	2.067	1.968	1.899	2.011	1.971	1.969	1.913	1.793	1.791	1.834
2010												
January	2.528	2.524	2.396	2.249	2.125	2.308	2.323	2.320	2.244	2.098	2.050	2.143
February	2.468	2.464	2.333	2.193	2.128	2.250	2.256	2.253	2.180	2.038	2.016	2.082
March	2.559	2.557	2.438	2.366	2.284	2.393	2.366	2.364	2.288	2.205	2.195	2.231
April	2.613	2.610	2.476	2.439	2.437	2.454	2.430	2.428	2.330	2.282	2.303	2.298
May	2.636	2.633	2.465	2.315	2.285	2.375	2.445	2.442	2.320	2.157	2.176	2.209
June	2.566	2.564	2.437	2.311	2.247	2.360	2.359	2.356	2.286	2.146	2.125	2.188
July	2.566	2.563	2.454	2.301	2.308	2.359	2.357	2.354	2.305	2.135	2.127	2.184
August	2.567	2.564	2.440	2.266	2.190	2.329	2.358	2.355	2.294	2.097	2.073	2.152
September	2.482	2.480	2.330	2.244	2.125	2.270	2.282	2.279	2.186	2.082	2.024	2.109
October	2.594	2.591	2.453	2.382	2.254	2.405	2.393	2.390	2.307	2.224	2.143	2.244
November	2.671	2.668	2.514	2.442	2.239	2.449	2.467	2.463	2.369	2.278	2.201	2.299
December	2.801	2.798	2.634	2.572	2.467	2.592	2.597	2.593	2.488	2.413	2.345	2.429
2010	2.587	2.584	2.446	2.343	2.247	2.380	2.386	2.383	2.299	2.182	2.150	2.215
2011												
January	2.891	2.888	2.718	2.639	2.496	2.662	2.690	2.686	2.573	2.484	2.421	2.505
February	3.000	2.997	2.860	2.775	2.607	2.799	2.800	2.796	2.716	2.612	2.521	2.634
March	3.372	3.369	3.255	3.142	2.947	3.177	3.172	3.167	3.110	2.968	2.837	2.999
April	3.626	3.624	3.491	3.468	3.361	3.474	3.433	3.431	3.342	3.292	3.166	3.300
May	3.716	3.713	3.490	3.387	3.339	3.419	3.519	3.515	3.346	3.209	3.159	3.241
June	3.491	3.488	3.260	3.196	2.995	3.212	3.287	3.283	3.117	3.024	2.991	3.046
July	3.429	3.428	3.194	3.284	3.260	3.254	3.234	3.232	3.043	3.112	3.059	3.092
August	3.398	3.396	3.139	3.144	3.050	3.141	3.193	3.190	2.991	2.967	2.974	2.973
September	3.415	3.413	3.252	3.093	3.098	3.144	3.195	3.191	3.103	2.903	2.807	2.948
October	3.291	3.287	3.148	2.994	2.849	3.041	3.071	3.066	2.999	2.814	2.753	2.856
November	3.245	3.239	3.066	2.895	2.801	2.946	3.023	3.017	2.922	2.723	2.678	2.769
December	3.098	3.094	2.904	2.821	2.769	2.845	2.877	2.872	2.757	2.647	2.626	2.673
2011	3.334	3.331	3.145	3.067	2.940	3.090	3.132	3.128	3.003	2.898	2.837	2.921
2012												
January	3.194	3.190	3.026	2.987	2.955	2.999	2.991	2.986	2.877	2.807	2.766	2.822
February	3.413	3.406	3.276	3.190	3.122	3.215	3.206	3.198	3.127	3.002	2.992	3.032
March	3.702	3.698	3.570	3.462	3.304	3.491	3.512	3.505	3.425	3.275	3.149	3.305
April	3.692	3.689	3.491	3.444	3.470	3.459	3.502	3.497	3.346	3.254	3.265	3.276
May	3.652	3.645	3.504	3.295	3.180	3.353	3.434	3.425	3.356	3.087	3.057	3.146
June	3.393	3.386	3.164	2.990	2.914	3.038	3.172	3.164	3.028	2.780	2.795	2.834

Dash (-) = No data reported.

NA = Not available.

W = Withheld to avoid disclosure of individual company data.

^a Includes sales through retail outlets as well as all direct sales to end users that were not made through company-operated retail outlets, e.g., sales to agricultural customers, commercial sales, and industrial sales.

Notes: Values shown for the current month are preliminary. Values shown for previous months are revised. Data are final upon publication in the *Petroleum Marketing Annual*.

Source: Energy Information Administration Form EIA-782A, "Refiners/Gas Plant Operators' Monthly Petroleum Product Sales Report."

Table 11. U.S. Refiner Reformulated Motor Gasoline Volumes by Grade and Sales Type
(Million Gallons per Day)

Year Month	Regular						Midgrade					
	Sales to End Users		Sales for Resale				Sales to End Users		Sales for Resale			
	Through Retail Outlets	Total ^a	DTW	Rack	Bulk	Total	Through Retail Outlets	Total ^a	DTW	Rack	Bulk	Total
1994	0.6	0.6	2.1	1.6	0.6	4.3	0.2	0.2	0.7	0.3	W	1.0
1995	7.8	8.1	20.7	W	W	43.3	3.0	3.1	7.4	3.1	-	10.5
1996	10.7	11.1	26.1	20.5	8.0	54.6	3.3	3.4	7.9	3.3	W	11.3
1997	13.4	13.8	28.0	21.7	7.6	57.3	3.6	3.7	7.9	3.1	W	11.0
1998	14.3	14.5	28.6	23.0	8.3	59.9	3.7	3.8	7.4	3.1	W	10.5
1999	14.5	14.8	29.8	26.1	9.6	65.5	3.6	3.7	7.0	3.1	NA	10.2
2000	15.5	15.9	32.1	29.1	8.5	69.6	3.3	3.4	6.2	2.6	-	8.8
2001	16.3	16.7	32.7	30.0	9.0	71.7	3.3	3.3	5.7	2.2	-	7.9
2002	16.9	17.2	33.1	30.4	8.2	71.7	3.3	3.3	5.6	2.1	-	7.6
2003	17.7	18.0	30.9	35.1	7.6	73.6	3.1	3.1	4.1	2.0	-	6.1
2004	16.2	16.5	29.5	39.7	6.1	75.3	2.6	2.6	3.3	2.0	-	5.2
2005	17.1	17.4	27.5	43.5	9.5	80.4	2.6	2.6	2.5	1.8	-	4.2
2006	17.7	18.0	26.8	45.7	3.4	75.9	2.5	2.5	1.9	1.5	-	3.4
2007	17.4	17.6	26.7	45.4	3.8	75.9	2.4	2.4	1.6	1.3	-	2.9
2008	16.6	16.9	25.4	48.1	4.2	77.7	2.0	2.0	1.1	1.1	-	2.2
2009	14.0	14.3	25.8	49.8	3.4	79.0	1.7	1.7	1.0	1.1	-	2.1
2010												
January	12.1	12.4	23.4	49.1	3.9	76.3	1.4	1.4	0.8	1.1	-	1.9
February	11.8	12.0	24.0	51.2	4.0	79.1	1.4	1.4	0.9	1.1	-	2.0
March	12.1	12.4	24.6	53.3	4.1	82.1	1.4	1.4	0.8	1.1	-	1.9
April	12.1	12.3	24.1	54.7	3.9	82.6	1.4	1.4	0.8	1.2	-	1.9
May	12.0	12.2	24.8	54.9	4.4	84.1	1.4	1.4	0.8	1.2	-	2.0
June	12.1	12.3	24.4	55.5	4.1	84.0	1.4	1.4	0.8	1.2	-	2.0
July	11.8	12.0	23.2	55.8	4.8	83.8	1.4	1.4	0.7	1.3	-	2.0
August	11.7	11.9	22.7	56.6	5.3	84.6	1.3	1.3	0.7	1.3	-	2.0
September	11.3	11.5	21.9	56.4	4.1	82.3	1.3	1.3	0.7	1.3	-	2.0
October	11.2	11.5	21.9	55.2	3.6	80.7	1.3	1.3	0.7	1.2	-	1.9
November	11.0	11.3	21.3	54.8	4.0	80.1	1.3	1.3	0.7	1.2	-	1.8
December	11.0	11.3	21.0	56.5	4.8	82.3	1.3	1.3	0.6	1.1	-	1.8
2010	11.7	11.9	23.1	54.5	4.2	81.9	1.3	1.3	0.7	1.2	-	1.9
2011												
January	10.5	10.8	19.8	54.7	3.9	78.4	1.2	1.2	0.6	1.1	-	1.7
February	10.7	11.0	20.2	56.1	5.0	81.2	1.2	1.2	0.6	1.1	-	1.7
March	11.0	11.2	20.1	57.2	3.8	81.2	1.2	1.2	0.6	1.0	-	1.6
April	11.1	11.3	20.1	56.3	4.0	80.3	1.2	1.2	0.5	1.0	-	1.6
May	10.9	11.1	19.6	57.5	4.0	81.2	1.2	1.2	0.5	1.1	-	1.6
June	11.3	11.5	19.7	58.8	4.9	83.4	1.2	1.2	0.5	1.1	-	1.7
July	11.4	11.6	19.7	57.2	4.7	81.6	1.2	1.2	0.5	1.1	-	1.7
August	11.4	11.7	19.5	58.8	4.4	82.8	1.2	1.2	0.5	1.1	-	1.7
September	11.3	11.6	19.2	58.4	3.7	81.3	1.2	1.2	0.5	1.1	-	1.6
October	10.6	10.8	19.0	58.0	4.4	81.3	1.2	1.2	0.5	1.1	-	1.6
November	9.9	10.2	18.6	58.3	3.9	80.7	1.1	1.1	0.5	1.1	-	1.6
December	9.7	9.9	18.9	59.5	3.5	81.8	1.0	1.1	0.5	1.1	-	1.6
2011	10.8	11.1	19.5	57.6	4.2	81.3	1.2	1.2	0.5	1.1	-	1.6
2012												
January	9.0	9.3	18.1	56.0	3.8	77.9	1.0	1.0	0.5	1.0	-	1.5
February	9.2	9.5	19.1	59.4	4.2	82.6	1.0	1.0	0.5	1.0	-	1.6
March	9.2	9.5	18.7	59.3	4.1	82.1	1.0	1.0	0.5	1.0	-	1.5
April	9.2	9.5	18.3	59.2	3.3	80.8	1.0	1.0	0.5	1.0	-	1.5
May	9.3	9.6	18.1	62.1	4.5	84.7	1.0	1.0	0.5	1.1	-	1.5
June	9.5	9.8	18.0	63.9	5.6	87.5	1.1	1.1	0.5	1.1	-	1.6

See footnotes at end of table.

Table 11. U.S. Refiner Reformulated Motor Gasoline Volumes by Grade and Sales Type
(Million Gallons per Day) — Continued

Year Month	Premium						All Grades					
	Sales to End Users		Sales for Resale				Sales to End Users		Sales for Resale			
	Through Retail Outlets	Total ^a	DTW	Rack	Bulk	Total	Through Retail Outlets	Total ^a	DTW	Rack	Bulk	Total
1994	0.2	0.2	1.2	0.5	0.2	1.9	1.0	1.0	4.0	2.4	0.8	7.2
1995	3.1	3.2	12.0	W	W	18.9	14.0	14.4	40.1	25.9	6.6	72.6
1996	3.1	3.2	11.7	5.3	1.5	18.6	17.0	17.6	45.7	29.2	9.6	84.5
1997	3.4	3.5	11.5	5.3	1.5	18.2	20.3	21.0	47.4	30.1	9.1	86.6
1998	3.8	3.9	12.2	W	1.6	19.8	21.8	22.2	48.2	32.0	9.9	90.1
1999	3.4	3.5	11.4	6.3	1.9	19.6	21.5	22.0	48.2	35.6	11.5	95.2
2000	3.0	3.1	9.6	5.4	1.9	16.8	21.9	22.4	47.9	37.0	10.4	95.2
2001	3.2	3.2	9.2	5.4	1.1	15.7	22.7	23.3	47.7	37.6	10.0	95.3
2002	3.4	3.5	9.5	5.6	1.1	16.3	23.6	24.1	48.2	38.0	9.3	95.6
2003	3.5	3.6	8.5	5.9	1.0	15.3	24.2	24.7	43.5	43.0	8.6	95.1
2004	3.1	3.1	7.4	6.0	0.6	14.1	21.9	22.3	40.2	47.7	6.7	94.6
2005	2.8	2.8	6.5	6.0	1.2	13.6	22.6	22.9	36.4	51.2	10.6	98.3
2006	2.7	2.7	5.9	5.9	0.7	12.5	22.9	23.2	34.6	53.1	4.1	91.8
2007	2.6	2.7	5.8	5.9	0.4	12.1	22.4	22.7	34.0	52.6	4.3	90.9
2008	2.4	2.4	5.0	5.4	0.4	10.8	21.0	21.3	31.5	54.6	4.6	90.8
2009	2.3	2.3	5.3	6.1	0.3	11.8	17.9	18.3	32.1	57.1	3.7	92.9
2010												
January	1.9	1.9	4.7	6.0	0.3	11.1	15.4	15.7	29.0	56.1	4.2	89.3
February	1.8	1.9	5.0	6.4	0.4	11.8	15.0	15.3	29.8	58.8	4.3	92.9
March	1.9	2.0	5.2	6.9	0.4	12.5	15.5	15.7	30.6	61.4	4.5	96.5
April	1.9	2.0	5.1	7.1	0.4	12.6	15.4	15.7	30.0	62.9	4.2	97.1
May	2.0	2.0	5.3	7.4	0.4	13.1	15.3	15.6	30.9	63.5	4.8	99.3
June	2.0	2.0	5.3	7.6	0.4	13.2	15.5	15.7	30.5	64.3	4.5	99.2
July	2.0	2.0	5.0	7.8	0.3	13.2	15.1	15.3	28.9	64.9	5.1	99.0
August	1.9	2.0	4.9	8.0	0.3	13.2	15.0	15.2	28.3	65.9	5.6	99.8
September	1.9	1.9	4.9	8.3	0.5	13.7	14.5	14.7	27.4	65.9	4.6	97.9
October	1.9	1.9	4.7	7.9	0.3	12.9	14.4	14.6	27.2	64.4	3.9	95.5
November	1.8	1.8	4.5	7.8	1.1	13.4	14.1	14.4	26.5	63.7	5.1	95.3
December	1.7	1.8	4.3	7.7	0.2	12.2	14.0	14.3	25.9	65.3	5.0	96.3
2010	1.9	1.9	4.9	7.4	0.4	12.7	14.9	15.2	28.8	63.1	4.7	96.5
2011												
January	1.6	1.7	4.0	7.4	0.3	11.7	13.3	13.6	24.4	63.2	4.2	91.8
February	1.7	1.7	4.0	7.6	0.3	11.9	13.6	13.8	24.8	64.8	5.3	94.8
March	1.6	1.6	3.8	7.3	0.2	11.2	13.8	14.1	24.5	65.6	4.0	94.0
April	1.6	1.6	3.7	7.1	0.2	11.1	13.9	14.1	24.3	64.4	4.2	92.9
May	1.6	1.7	3.7	7.4	0.3	11.4	13.7	14.0	23.9	66.0	4.3	94.2
June	1.8	1.8	3.9	7.9	0.3	12.0	14.2	14.5	24.1	67.8	5.1	97.1
July	1.8	1.8	3.9	7.8	0.3	12.0	14.4	14.6	24.2	66.1	4.9	95.2
August	1.8	1.8	3.9	8.0	0.1	12.0	14.4	14.7	24.0	67.9	4.6	96.5
September	1.8	1.8	3.8	8.0	0.2	12.0	14.3	14.6	23.5	67.4	3.9	94.9
October	1.8	1.8	3.8	8.0	0.2	12.0	13.5	13.7	23.3	67.0	4.6	94.9
November	1.7	1.7	3.8	8.1	0.3	12.1	12.7	13.0	22.8	67.5	4.2	94.4
December	1.6	1.7	3.9	8.3	0.3	12.6	12.3	12.6	23.3	68.9	3.8	96.0
2011	1.7	1.7	3.9	7.7	0.2	11.8	13.7	13.9	23.9	66.4	4.4	94.7
2012												
January	1.5	1.5	3.7	7.6	0.2	11.5	11.5	11.7	22.3	64.6	4.0	90.9
February	1.5	1.5	3.8	8.0	0.4	12.2	11.7	12.0	23.3	68.4	4.6	96.3
March	1.5	1.5	3.6	7.7	0.3	11.6	11.6	11.9	22.8	68.0	4.4	95.2
April	1.5	1.5	3.7	8.0	0.2	11.9	11.7	12.0	22.4	68.2	3.6	94.2
May	1.5	1.6	3.6	8.6	0.3	12.5	11.8	12.1	22.2	71.8	4.8	98.8
June	1.6	1.6	3.7	9.1	0.3	13.1	12.2	12.5	22.2	74.2	5.8	102.2

Dash (–) = No data reported.

NA = Not available.

W = Withheld to avoid disclosure of individual company data.

^a Includes sales through retail outlets as well as all direct sales to end users that were not made through company-operated retail outlets, e.g., sales to agricultural customers, commercial sales, and industrial sales.

Notes: Values shown for the current month are preliminary. Values shown for previous months are revised. Data are final upon publication in the *Petroleum Marketing Annual*. Totals may not equal the sum of the components due to rounding.

Source: Energy Information Administration Form EIA-782A, "Refiners'/Gas Plant Operators' Monthly Petroleum Product Sales Report."

Table 16. U.S. Refiner Residual Fuel Oil Prices

(Dollars per Gallon Excluding Taxes)

Year Month	Sulfur Less Than or Equal to 1 Percent		Sulfur Greater Than 1 Percent		Average	
	Sales to End Users	Sales for Resale	Sales to End Users	Sales for Resale	Sales to End Users	Sales for Resale
1985	0.644	0.610	0.582	0.560	0.610	0.577
1986	0.372	0.328	0.317	0.289	0.343	0.305
1987	0.447	0.412	0.396	0.362	0.423	0.385
1988	0.372	0.333	0.300	0.271	0.334	0.300
1989	0.436	0.407	0.344	0.331	0.385	0.360
1990	0.505	0.472	0.400	0.372	0.444	0.413
1991	0.402	0.364	0.306	0.292	0.340	0.314
1992	0.389	0.351	0.312	0.286	0.336	0.308
1993	0.397	0.337	0.303	0.256	0.337	0.293
1994	0.401	0.345	0.330	0.287	0.352	0.317
1995	0.436	0.383	0.377	0.338	0.392	0.363
1996	0.526	0.456	0.433	0.389	0.455	0.420
1997	0.488	0.415	0.403	0.366	0.423	0.387
1998	0.354	0.299	0.287	0.269	0.305	0.280
1999	0.405	0.382	0.362	0.329	0.374	0.354
2000	0.708	0.627	0.566	0.512	0.602	0.566
2001	0.642	0.523	0.492	0.428	0.531	0.476
2002	0.640	0.546	0.544	0.508	0.569	0.530
2003	0.804	0.728	0.651	0.588	0.698	0.661
2004	0.835	0.764	0.692	0.601	0.739	0.681
2005	1.168	1.115	0.974	0.842	1.048	0.971
2006	1.342	1.202	1.173	1.085	1.218	1.136
2007	1.436	1.406	1.350	1.314	1.374	1.350
2008	2.144	1.918	1.889	1.843	1.964	1.866
2009	1.413	1.337	1.306	1.344	1.341	1.342
2010						
January	1.852	1.767	1.660	1.705	1.725	1.721
February	1.862	1.725	1.574	1.650	1.681	1.666
March	1.862	1.739	1.609	1.700	1.692	1.711
April	1.887	1.827	1.655	1.725	1.718	1.748
May	1.898	1.675	1.601	1.675	1.686	1.675
June	1.874	1.629	1.555	1.604	1.636	1.612
July	1.858	1.686	1.536	1.604	1.639	1.629
August	1.895	1.705	1.571	1.625	1.676	1.642
September	1.883	1.716	1.558	1.612	1.645	1.632
October	1.913	1.793	1.637	1.688	1.721	1.712
November	2.025	1.865	1.701	1.741	1.804	1.768
December	2.215	2.036	1.784	1.814	1.931	1.865
2010	1.920	1.756	1.619	1.679	1.713	1.697
2011						
January	2.302	NA	1.870	1.896	2.013	1.918
February	2.451	2.100	2.019	2.079	2.150	2.086
March	2.654	2.344	2.245	2.307	2.403	2.321
April	2.741	2.555	2.370	2.427	2.475	2.448
May	2.786	2.463	2.325	2.374	2.440	2.392
June	2.905	2.467	2.312	2.377	2.473	2.402
July	2.877	2.547	2.362	2.430	2.508	2.474
August	2.896	2.394	2.342	2.392	2.512	2.392
September	2.882	2.368	2.318	2.370	2.473	2.369
October	2.891	2.512	2.276	2.375	2.454	2.406
November	2.853	2.566	2.368	2.424	2.521	2.459
December	2.891	2.473	2.348	2.335	2.509	2.371
2011	2.736	2.389	2.257	2.316	2.401	2.336
2012						
January	2.965	2.591	2.452	2.480	2.620	2.512
February	3.070	2.739	2.556	2.632	2.705	2.654
March	3.159	2.921	2.601	2.717	2.784	2.772
April	3.201	2.805	2.596	2.624	2.731	2.670
May	3.170	2.589	2.652	R 2.501	2.784	R 2.527
June	3.083	2.275	2.179	2.185	2.476	2.210

NA = Not available.

R Revised data.

Notes: Values shown for the current month are preliminary. Values shown for previous months are revised. Data are final upon publication in the *Petroleum Marketing Annual*.

Source: Energy Information Administration Form EIA-782A, "Refiners'/Gas Plant Operators' Monthly Petroleum Product Sales Report."

Table 17. U.S. Refiner Residual Fuel Oil Volumes

(Million Gallons per Day)

Year Month	Sulfur Less Than or Equal to 1 Percent		Sulfur Greater Than 1 Percent		Total	
	Sales to End Users	Sales for Resale	Sales to End Users	Sales for Resale	Sales to End Users	Sales for Resale
1985	11.4	7.0	13.8	12.9	25.2	19.9
1986	15.2	7.9	16.4	10.7	31.6	18.6
1987	15.1	7.8	13.9	9.1	29.0	16.9
1988	14.2	8.7	15.9	10.3	30.2	18.9
1989	13.4	7.9	17.0	13.1	30.4	21.0
1990	11.1	7.4	14.9	10.5	25.9	17.9
1991	8.6	5.6	15.5	12.2	24.0	17.8
1992	7.1	5.2	15.3	10.0	22.4	15.2
1993	6.2	5.7	11.1	6.9	17.2	12.6
1994	4.2	6.6	9.3	6.2	13.5	12.8
1995	2.9	7.7	8.7	5.9	11.6	13.6
1996	3.1	6.3	9.8	7.4	12.9	13.8
1997	3.2	4.8	10.3	6.7	13.4	11.5
1998	3.9	5.7	10.5	9.6	14.4	15.4
1999	3.9	5.3	10.0	6.2	13.9	11.5
2000	3.3	4.9	9.8	5.6	13.1	10.5
2001	3.8	5.2	11.0	5.1	14.8	10.3
2002	2.7	5.1	7.8	3.7	10.4	8.8
2003	3.3	3.5	7.4	3.2	10.7	6.7
2004	3.4	2.9	6.8	3.0	10.2	5.9
2005	4.0	2.2	6.4	2.5	10.4	4.7
2006	2.8	2.8	7.6	3.6	10.4	6.5
2007	3.1	3.2	7.8	5.0	10.9	8.2
2008	2.5	2.9	5.9	6.6	8.4	9.5
2009	2.8	2.9	5.7	6.9	8.5	9.8
2010						
January	2.8	2.2	5.5	6.5	8.3	8.7
February	3.3	2.2	5.6	8.1	8.9	10.3
March	2.5	3.2	5.2	7.7	7.7	10.9
April	1.9	2.0	4.9	7.2	6.8	9.3
May	2.1	2.2	5.1	9.5	7.2	11.6
June	1.8	4.0	5.3	7.7	7.1	11.8
July	2.5	3.3	5.3	7.5	7.9	10.8
August	2.2	2.4	4.6	9.1	6.8	11.4
September	2.1	2.2	5.6	9.1	7.7	11.3
October	2.3	2.4	5.2	8.3	7.6	10.7
November	2.3	2.2	5.0	7.9	7.3	10.1
December	2.6	2.7	5.0	9.0	7.6	11.7
2010	2.4	2.6	5.2	8.1	7.6	10.7
2011						
January	2.5	2.9	5.1	8.8	7.6	11.7
February	2.1	4.5	4.9	8.8	7.0	13.3
March	2.9	5.8	4.6	9.1	7.5	14.8
April	1.9	1.8	4.7	9.2	6.5	11.1
May	1.6	2.3	4.9	9.5	6.5	11.8
June	1.6	3.9	4.2	10.1	5.7	14.0
July	1.7	5.0	4.3	8.2	5.9	13.3
August	1.5	3.1	3.5	7.0	5.1	10.1
September	1.7	3.1	4.4	8.8	6.1	11.9
October	1.8	2.6	4.5	8.8	6.3	11.4
November	2.0	2.9	4.4	8.8	6.4	11.7
December	1.9	3.0	4.5	8.4	6.5	11.4
2011	1.9	3.4	4.5	8.8	6.4	12.2
2012						
January	2.0	2.8	4.1	6.7	6.2	9.5
February	1.6	1.9	4.0	7.1	5.7	9.1
March	2.0	2.3	4.1	6.0	6.0	8.3
April	1.4	2.3	4.8	6.7	6.2	9.0
May	1.2	2.9	3.5	R7.0	4.6	R10.0
June	1.9	2.8	3.9	7.1	5.8	9.9

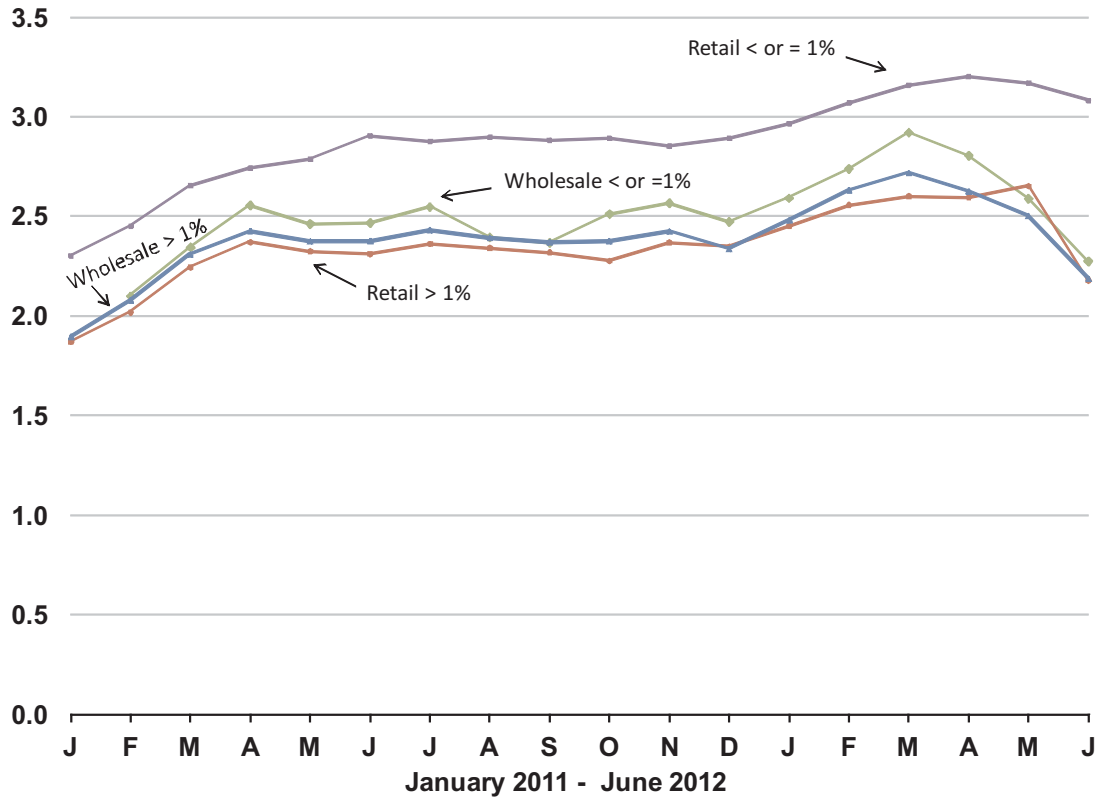
R Revised data.

Notes: Values shown for the current month are preliminary. Values shown for previous months are revised. Data are final upon publication in the *Petroleum Marketing Annual*. Totals may not equal the sum of the components due to rounding.

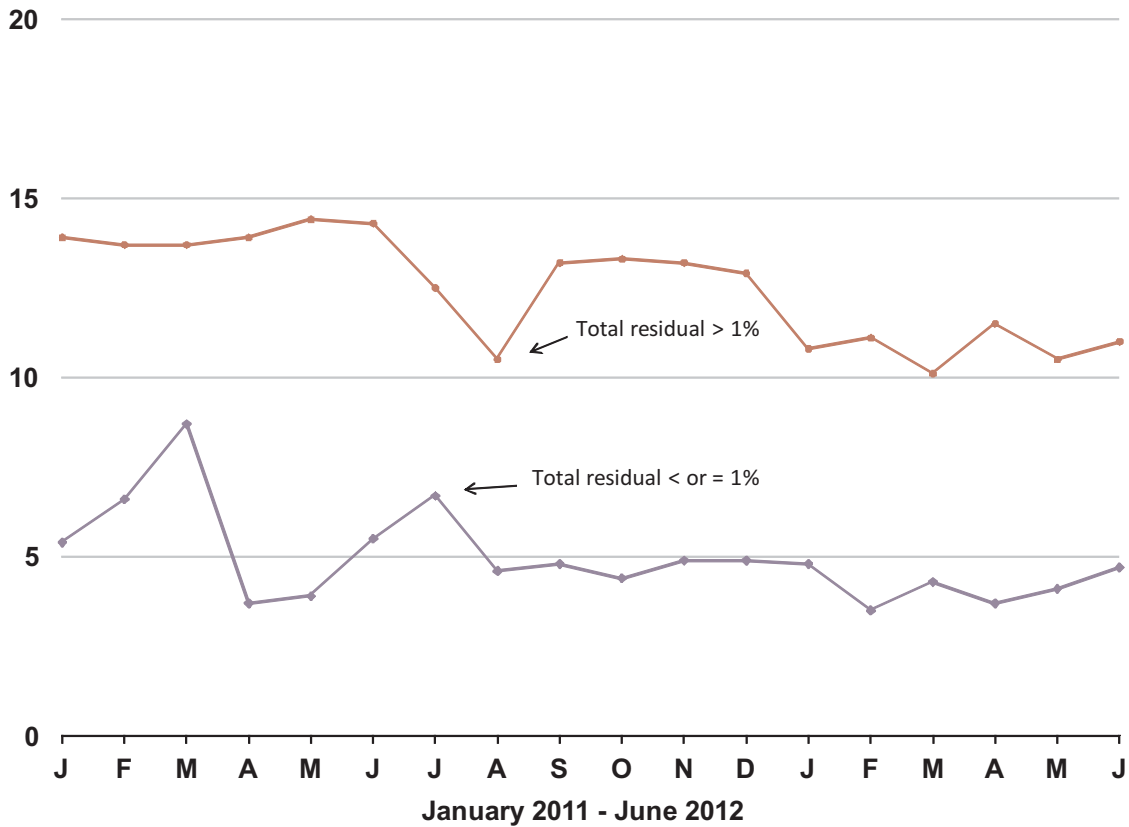
Source: Energy Information Administration Form EIA-782A, "Refiners/Gas Plant Operators' Monthly Petroleum Product Sales Report."

Figure 7. U.S. Refiner Residual Fuel Oil Prices and Volumes

dollars per gallon excluding taxes



million gallons per day



Source: Energy Information Administration, Form EIA-782A, "Refiners' /Gas Plant Operators' Monthly Petroleum Product Sales Report."