

## 5. Rates

This section contains information on telephone price indices and rate levels. It describes and presents a series of price indices maintained by the Bureau of Labor Statistics (BLS). It also discusses rate levels and changes in average rate levels.

### A. Changes in Telephone Service Price Indices

The BLS collects information on telephone service as part of three separate programs -- the Consumer Price Index (CPI), the Producer Price Index (PPI), and the Consumer Expenditure Survey. The monthly price indices represent prices sampled in the middle of the month.

#### 1. Long-Term Trends in the Overall Price of Telephone Service:

A Consumer Price Index for telephone services was first published in 1935.<sup>1</sup> Since that time, telephone prices have tended to increase at a slower pace than most other prices. The most recent data are for April 1997. For the 12 months ending April 1997 the nation's overall level of prices (measured by the CPI for all items) rose by 2.5%. The CPI for telephone services rose by 3.6% during the same period. The CPI for telephone services is composed of three subindices. During the most recent 12 months, the local service component (including subscriber line charges) rose by 3.8%, while the price index for interstate toll calls rose by 1%, and the price index for state toll calls rose by 6.6%.

Table 5.1 shows long-run changes in the Consumer Price Indices for all items, all services, telephone services, each of the seven major categories that currently constitute the overall CPI, and several services that are often characterized as public utilities. The price of telephone service has increased less rapidly than the prices of most of these categories when viewed over a long period of time.<sup>2</sup>

#### 2. Recent Annual Changes in the Overall Price of Telephone Service:

The CPI index of telephone services is based on a "market basket" intended to represent the telephone-related expenditures of a typical urban household. It includes both local and long distance services. Changes in telephone prices tend to lag behind other price changes. Overall inflation in the American economy peaked in 1979 and 1980. In contrast, the price of telephone services rose most rapidly during the years 1981 through 1984, with the rate of increase declining since then. The annual rate of change during recent years is shown in Table 5.2 for the Gross Domestic Product chain-type price

---

1 BLS publishes two sets of Consumer Price Indices. The CPI-U, used herein, is based on expenditures of all urban consumers. The CPI-W series is based on expenditures of urban wage earners and clerical workers.

2 For a description of the methodologies used by the BLS in calculating price indices, see Reference Book of Rates, Price Indices, and Household Expenditures for Telephone Service, published by the FCC's Industry Analysis Division in March 1997.

index (which reflects inflation throughout the economy), the overall CPI (which measures the impact of inflation on consumers), and the CPI for telephone services.

### 3. Price Indices for Local Service:

The Bureau of Labor Statistics publishes a number of price indices related to local telephone service, two of which are important to the monitoring program. The CPI index of local telephone charges is based on a broadly defined "market basket" of local services that includes monthly service charges, message unit charges, equipment, installation, additional services (such as Touch-Tone and Call Waiting), taxes, subscriber line charges, and all other consumer expenditures associated with local telephone services except long distance charges. In contrast, the PPI index of monthly residential rates is much more narrowly defined. It is based only on monthly service charges for residential service, optional Touch-Tone service, and subscriber line charges. It excludes taxes and all other telephone service charges. The annual rates of change for these two indices are presented in Table 5.3. In the CPI index, about half of the 1984 increase occurred during January, reflecting adjustments made at the time of AT&T's divestiture of its operating companies.

The PPI telephone service indices were discontinued in June 1995. At that time the BLS introduced revenue-weighted telephone price indices. The new indices categorize the telephone industry into much finer detail, though the new series are not comparable to the old in many categories.

### 4. Price Indices for Long Distance Service:

CPI data are available for intrastate toll and interstate toll services since December 1977. Table 5.4 presents the annual changes in these series for recent years. Interstate toll rates fell between 1983 and 1990, and intrastate toll rates have generally fallen since 1987.

Starting in 1993, long distance carriers began raising basic long distance rates while at the same time offering large discounts to high volume residential customers. The average amount paid by residential customers for each minute of interstate calling probably fell between 1992 and 1994. The CPI long distance indices were heavily weighted for basic rate customers through 1994 and therefore show interstate rates increasing during this period. During late 1994, the Bureau of Labor Statistics increased the weight given to discount plans. However, not until recently have they fully reflected discounts.

Monthly data for the CPI telephone indices are shown in Table 5.5. Monthly data for the discontinued PPI indices are shown in Table 5.6, and the current PPI indices in Table 5.7.

## B. Information on Rate Levels

This section describes the level of local and long distance rates and access charges in dollar terms.

### 1. Local Rates

Local rates are regulated by state regulatory agencies and vary greatly from area to area. Characterization of any rate as "typical" is therefore difficult. In most states, the Bell operating companies and larger independent telephone companies charge higher rates in metropolitan areas than in rural areas -- a pricing practice that dates back to the turn of the century and is traditionally justified by the belief that the value of the service provided is higher for subscribers with more populous local calling areas. This also reflects the fact that the operating companies forego toll revenue when exchange calling areas increase in size. California differs from most states in that rates for each carrier are averaged throughout the state.

Table 5.8 presents average local residential rates. The price indices published by the BLS indicate percentage changes in the price of the telephone services. The BLS does not publish the actual level of rates. The averages shown in Table 5.8 are based on a FCC survey using the same sampling areas and weights used by the BLS in constructing the Consumer Price Index.<sup>3</sup> In October 1996, the national average for flat rate residential service was \$13.70 monthly. Lower-priced service alternatives are frequently available, at an average monthly charge of \$7.06. Customers also pay monthly subscriber line charges and taxes.

The local rate averages shown in Table 5.8 are based on rates that are available to all customers. Many states have programs that subsidize monthly service charges or connection fees paid by needy households. These programs are further described in Section 2 above. Most of these programs are part of the FCC-sponsored lifeline and Link-Up programs. The most recent compiled local rate survey, reflecting data as of October 15, 1996, indicated that assistance for monthly service charges was offered in 68 of the 95 sample cities, representing 71% of urban consumers. Connection assistance was offered in 91 of the 95 sample cities representing 97% of urban consumers. In October 1996, lifeline and similar assistance programs provided an average benefit of \$8.93 per month. Link-Up and similar connection assistance programs reduced nonrecurring connection costs by an average of \$26.63.

Table 5.9 presents average monthly rates for single-line business customers. Like the residential rates presented above, they are based on a FCC survey using the same sampling areas and weights used by the BLS in constructing the Consumer Price Index.

## 2. Long Distance Rates

Table 5.10 compares the prices of directly dialed interstate long distance calls in all mileage bands and rate periods based on AT&T, MCI, and Sprint tariffed rates in effect during January 1984 and May 1997. During this period, AT&T's per-minute charges for directly dialed interstate calls fell about 25%. These rates are the basic message toll service rates and do not reflect discounts available only in special calling plans. They also do not reflect any taxes or any surcharges imposed by some states. All of the rate decreases occurred before January 1992. Since January 1992, basic schedule rate elements have increased by between 23% and 55%. For example, AT&T's basic charges for coast-to-coast calls increased by nearly 27%.

---

3 For a discussion of methodology, see Reference Book of Rates, Price Indices, and Household Expenditures for Telephone Service, published by the FCC's Industry Analysis Division in March 1997.

Table 5.10 shows rates for 5-minute calls for residential and commercial customers. Starting in 1993, AT&T, MCI, and Sprint required single line and other business customers to use new commercial rates. These commercial rate schedules do not separate the off-peak period by evening and night, and the schedules have fewer mileage bands. In fact, commercial customers that joined Sprint since 1995 pay the same rate regardless of mileage. Table 5.10 shows rates for the rate categories that existed in 1984.

### 3. Subscriber Line and Access Charges

Monthly subscriber line charges (or "end user" charges) were first imposed in 1984 and were charged to residential customers beginning in 1985. These charges were introduced to reduce the per-minute Carrier Common Line (CCL) access charges, enabling reductions in interstate toll rates. Table 5.11 presents the level of these charges over time. In 1993, costs and investment (including land and buildings) for general support facilities were transferred from the traffic sensitive category to the non-traffic sensitive category, causing an increase in subscriber line charges and CCL charges and a reduction in traffic sensitive access charges.

Access charges by local telephone companies to long distance carriers are an important component of the overall cost of providing long distance service. Table 5.12 shows the history of the average levels of these charges.

The CCL charges shown in Table 5.12 represent national averages. Table 5.13 presents terminating and originating charges by carrier. Some carriers, such as Ameritech, file averaged rates for all of their study areas. Pacific Telesis, on the other hand, files separate rates for California and Nevada. Since the introduction of tariff streamlining, carriers no longer file their proposed access charges in April. Proposed charges are now filed in June.

The data in table 5.12 suggest that, on average, carriers reduced CCL rates by about 1.2%, compared with rates in effect in August 1995. The rates shown for the NECA pool carriers reflects long-term support from the Universal Service Fund. Given our current accounting rules, the NECA pool rates would be 3 to 4 times higher if long term support were not available.

Table 5.14 shows interstate access charges by carrier, including traffic sensitive and fixed-charge transport charges expressed as per-minute charges. The table also shows an average charge per conversation minute using each carrier's originating, terminating, traffic sensitive and fixed-charge transport charges. These rates are intended to be illustrative, since most interstate calls originate with one local exchange carrier and terminate with another.

The Universal Service Fund, which subsidizes local exchange service in high-cost areas, and the lifeline assistance program, which subsidizes service for low-income households, are funded by the larger interexchange carriers. Carriers serving .05% or more of all presubscribed lines pay a fixed charge per presubscribed line per month. Table 5.15 shows the monthly charges per presubscribed line, the number of lines used as the basis for billings, and the total billings to interexchange carriers.

**TABLE 5.1**  
**ANNUAL RATES OF CHANGE FOR VARIOUS PRICE INDEXES \***

	1935-1996	1986 - 1996
CPI all items	4.1 %	3.7 %
CPI all services	4.5	4.2
CPI telephone services	2.0	0.7
CPI major categories:		
- food & beverages	**	3.5
- housing	**	3.3
- apparel & upkeep	3.1	2.2
- transportation	3.9	3.4
- medical care	5.2	6.5
- entertainment	**	3.6
- other goods & services	**	5.9
CPI public transportation	5.0	4.5
CPI piped gas	3.5	0.7
CPI electricity	2.4	1.8
CPI sewer & water maintenance	**	5.5
CPI postage	4.2	3.8

Source: Bureau of Labor Statistics.

\* Exponential rates were calculated using "year average" index values for the first and last years of each comparison.

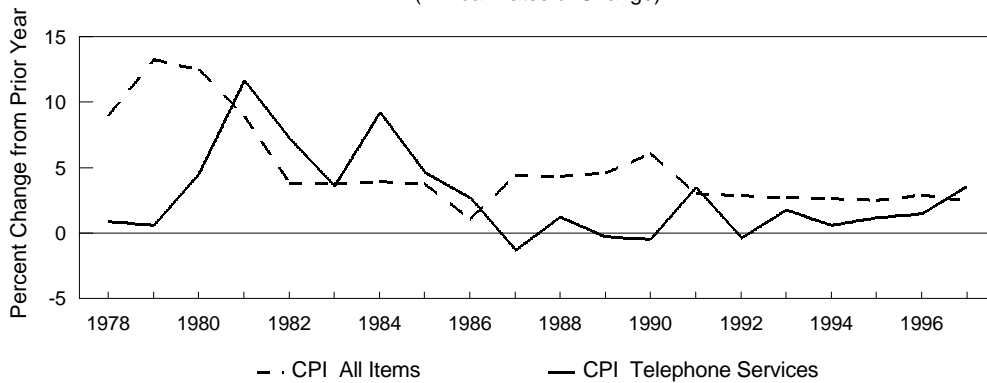
\*\* Series not established until after 1935.

**Table 5.2**  
**Annual Rate of Change in Price Indices**

	GDP Chain-type Price Index	CPI: All Items	CPI: Telephone Services
1978	7.2 %	9.0 %	0.9 %
1979	8.6	13.3	0.7
1980	9.2	12.5	4.6
1981	9.4	8.9	11.7
1982	6.2	3.8	7.2
1983	4.3	3.8	3.6
1984	3.7	3.9	9.2
1985	3.6	3.8	4.7
1986	2.5	1.1	2.7
1987	3.1	4.4	-1.3
1988	3.6	4.4	1.3
1989	4.2	4.6	-0.3
1990	4.3	6.1	-0.4
1991	4.0	3.1	3.5
1992	2.8	2.9	-0.3
1993	2.6	2.7	1.8
1994	2.3	2.7	0.7
1995	2.5	2.5	1.2
1996	2.1	3.0	1.5
1997 *		2.5	3.6

\* The 1997 CPI changes are measured April through April.

**CPI All Items and CPI Telephone Services**  
 (Annual Rates of Change)



**Table 5.3**

Annual Changes in Price Indices for Local Telephone Service

	Local Residential Service	
	CPI: All Local Charges	PPI: Monthly Service Charges
1978	1.4 %	3.1 %
1979	1.7	1.6
1980	7.0	7.1
1981	12.6	15.6
1982	10.8	9.0
1983	3.1	0.2
1984	17.2	10.4
1985	8.9	12.4
1986	7.1	8.9
1987	3.3	2.6
1988	4.5	4.6
1989	0.6	1.9
1990	1.0	1.5
1991	5.1	2.1
1992	0.5	-0.2
1993	1.0	0.8
1994	-0.3	0.7
1995	2.6	**
1996	0.2	0.4
1997 ***	3.8	0.2

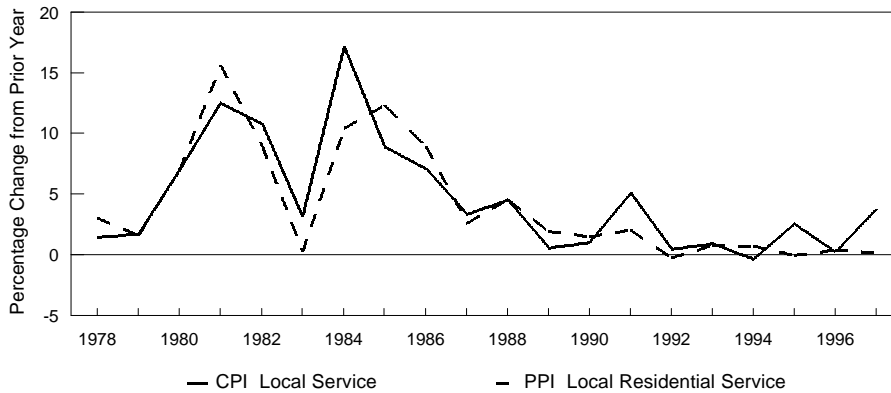
\* Measured December to December, except as noted.

\*\* The BLS introduced new producer price indices for telephone services in June of 1995. Comparisons of the two PPI series may not be valid.

\*\*\* Measured April through April. The CPI for April 1996 reflected a one-time credit in some consumers' local phone bills. In the absence of this credit, the change would have been on the order of 1.2%.

### Indices of Residential Local Telephone Service

(Annual Rates of Change)



**Table 5.4**

Annual Changes in Price Indices for Long Distance Telephone Services \*

	Interstate Toll Calls		Intrastate Toll Calls	
	CPI	PPI	CPI	PPI
1978	-0.8 %	0.0 %	1.3 %	0.1 %
1979	-0.7	-0.9	0.1	-0.7
1980	3.4	5.5	-0.6	2.3
1981	14.6	15.9	6.2	8.0
1982	2.6	3.9	4.2	1.7
1983	1.5	0.0	7.4	3.9
1984	-4.3	-5.1	3.6	3.8
1985	-3.7	-3.0	0.6	2.1
1986	-9.4	-10.0	0.3	-3.5
1987	-12.4	-11.8	-3.0	-3.0
1988	-4.2	-2.1	-4.2	-3.7
1989	-1.3	-1.7	-2.6	0.5
1990	-3.7	-0.1	-2.2	-2.2
1991	1.3	-1.3	-1.5	-2.6
1992	-1.3	1.0	-2.4	1.3
1993	6.5	3.8	0.2	-1.1
1994	5.4	6.1	-1.0	-1.4
1995	0.1	**	-3.8	**
1996	4.0	6.1	4.0	-0.2
1997 ***	1.0	0.2	6.6	0.3

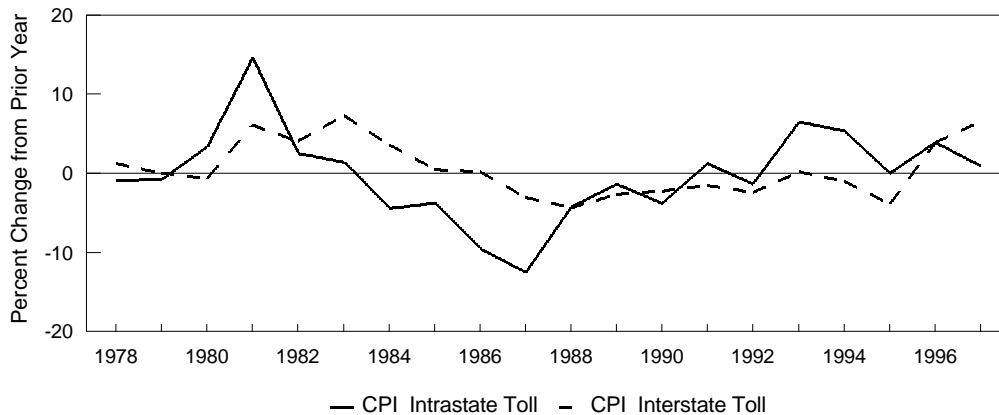
\* Measured December through December, except as noted.

\*\* Measurement of Producer Prices changed in July 1995. The two PPI series are not comparable. The discontinued series includes both business and residential rates, while the new PPI series presented here only covers residential rates.

\*\*\* Measured April through April

### CPI Telephone Service Price Indices

(Annual Rates of Change)





**Table 5.5**  
**Consumer Price Indices**  
(1982-1984=100)

	<b>All Goods &amp; Services</b>	<b>All Telephone Services</b>	<b>Local Services</b>	<b>Interstate Toll Service</b>	<b>Intrastate Toll Service</b>
1983 January	97.8	98.1	97.2	100.9	97.3
February	97.9	98.3	96.8	101.6	98.9
March	97.9	98.5	97.0	101.6	99.3
April	98.6	98.4	96.8	101.6	99.5
May	99.2	98.9	97.5	101.6	100.0
June	99.5	99.3	98.1	101.6	100.2
July	99.9	99.5	98.1	101.7	100.9
August	100.2	99.6	98.3	101.7	101.0
September	100.7	99.9	98.6	101.7	101.2
October	101.0	99.7	98.3	101.4	101.6
November	101.2	100.4	99.5	101.4	102.3
December	101.3	99.8	98.3	101.3	102.2
1984 January	101.9	105.0	106.7	101.3	104.2
February	102.4	107.0	110.0	102.1	104.2
March	102.6	106.4	109.1	102.1	104.1
April	103.1	106.7	109.1	102.0	105.6
May	103.4	106.9	109.5	102.3	105.1
June	103.7	107.1	110.7	98.9	106.5
July	104.1	107.7	112.3	96.9	107.5
August	104.5	107.9	112.9	96.8	106.6
September	105.0	108.7	114.3	96.8	106.5
October	105.3	108.8	114.5	97.0	106.5
November	105.3	109.4	115.4	96.9	107.1
December	105.3	109.0	115.2	96.9	105.9
1985 January	105.5	109.3	115.6	96.9	105.9
February	106.0	108.3	113.8	96.9	105.8
March	106.4	109.5	116.0	96.9	106.1
April	106.9	109.4	115.8	96.9	106.0
May	107.3	109.6	116.0	97.4	105.8
June	107.6	112.1	121.3	94.7	106.2
July	107.8	112.9	123.0	93.1	107.5
August	108.0	113.6	123.9	93.3	107.8
September	108.3	113.7	124.2	93.3	107.8
October	108.7	113.8	124.3	93.3	108.0
November	109.0	114.2	125.2	93.3	107.9
December	109.3	114.1	125.5	93.3	106.5

**Table 5.5**  
**Consumer Price Indices**  
(1982-1984=100)

	<b>All Goods &amp; Services</b>	<b>All Telephone Services</b>	<b>Local Services</b>	<b>Interstate Toll Service</b>	<b>Intrastate Toll Service</b>
1986 January	109.6	114.6	126.2	93.3	106.7
February	109.3	114.8	126.4	93.3	107.0
March	108.8	115.3	127.2	93.3	107.1
April	108.6	116.5	129.5	93.3	106.8
May	108.9	116.5	129.5	93.3	106.9
June	109.5	118.7	135.6	88.0	106.7
July	109.5	118.7	137.0	84.7	106.7
August	109.7	118.8	137.2	84.4	107.0
September	110.2	118.3	136.5	84.4	106.5
October	110.3	118.9	137.5	84.4	106.8
November	110.4	117.6	135.1	84.4	106.5
December	110.5	117.2	134.4	84.5	106.8
1987 January	111.2	116.6	137.6	77.1	107.0
February	111.6	116.4	137.5	77.1	106.4
March	112.1	116.4	137.4	77.1	106.4
April	112.7	116.7	138.2	77.0	106.3
May	113.1	116.4	138.1	76.7	105.2
June	113.5	115.6	137.5	76.7	102.7
July	113.8	116.6	141.0	73.4	104.0
August	114.4	117.0	141.9	73.4	103.8
September	115.0	116.6	140.9	73.7	103.5
October	115.3	117.0	141.3	73.7	104.1
November	115.4	116.9	141.4	73.7	103.6
December	115.4	115.7	138.9	74.0	103.6
1988 January	115.7	115.8	139.9	72.2	104.1
February	116.0	116.6	141.6	72.2	103.6
March	116.5	116.2	141.1	72.0	103.2
April	117.1	116.6	142.0	72.1	102.9
May	117.5	116.6	142.0	72.1	102.8
June	118.0	115.8	140.8	72.1	102.3
July	118.5	115.8	141.4	72.1	100.3
August	119.0	114.8	139.4	72.1	100.3
September	119.8	115.6	140.6	73.1	100.0
October	120.2	115.8	141.1	73.1	99.4
November	120.3	115.7	140.9	73.1	99.4
December	120.5	117.2	145.2	70.9	99.2

**Table 5.5**  
**Consumer Price Indices**  
(1982-1984=100)

	<b>All Goods &amp; Services</b>	<b>All Telephone Services</b>	<b>Local Services</b>	<b>Interstate Toll Service</b>	<b>Intrastate Toll Service</b>
1989 January	121.1	116.8	145.0	70.9	97.4
February	121.6	116.6	144.7	70.8	97.4
March	122.3	116.2	144.1	70.8	96.9
April	123.1	117.2	146.6	70.0	96.8
May	123.8	117.9	147.8	69.8	97.4
June	124.1	117.6	147.2	69.8	97.4
July	124.4	117.8	147.8	69.6	97.0
August	124.6	117.7	147.6	69.6	97.0
September	125.0	117.8	147.9	69.6	96.9
October	125.6	116.9	146.2	69.6	96.7
November	125.9	117.2	146.8	69.6	96.8
December	126.1	116.9	146.0	70.0	96.6
1990 January	127.4	117.6	148.4	69.1	95.2
February	128.0	117.9	149.0	69.0	95.1
March	128.4	118.2	149.7	69.0	95.0
April	128.9	118.4	150.0	69.0	95.1
May	129.2	118.0	149.2	69.0	95.2
June	129.9	118.0	149.2	69.0	95.3
July	130.4	115.5	145.4	67.4	95.4
August	130.6	117.7	149.7	67.4	95.3
September	132.7	117.9	150.1	67.4	95.2
October	133.5	118.6	151.4	67.4	94.8
November	133.8	118.6	151.4	67.4	94.7
December	133.8	116.4	147.5	67.4	94.5
1991 January	134.6	119.3	153.4	67.1	93.4
February	134.8	119.2	153.2	67.1	93.4
March	135.0	119.3	153.2	67.5	93.3
April	135.2	119.3	153.4	67.5	92.9
May	135.6	119.3	153.6	67.5	92.6
June	136.0	119.5	153.6	67.5	93.1
July	136.2	119.6	153.8	67.5	93.2
August	136.6	119.7	154.1	67.5	93.2
September	137.2	119.9	154.2	68.0	93.1
October	137.4	120.0	154.5	68.0	92.9
November	137.8	120.4	155.0	68.2	93.3
December	137.9	120.5	155.0	68.3	93.1

**Table 5.5**  
**Consumer Price Indices**  
(1982-1984=100)

	<b>All Goods &amp; Services</b>	<b>All Telephone Services</b>	<b>Local Services</b>	<b>Interstate Toll Service</b>	<b>Intrastate Toll Service</b>
1992 January	138.1	120.8	155.8	68.6	92.5
February	138.6	120.8	155.8	68.6	92.2
March	139.3	120.9	156.2	68.6	91.8
April	139.5	120.8	156.2	68.6	91.4
May	139.7	120.8	156.2	68.6	91.4
June	140.2	119.9	154.7	68.2	91.2
July	140.5	120.3	155.7	67.5	91.4
August	140.9	120.1	155.4	67.6	91.2
September	141.3	120.0	155.3	67.4	91.1
October	141.8	120.0	155.4	67.4	91.0
November	142.0	120.0	155.4	67.4	90.9
December	141.9	120.1	155.7	67.4	90.9
1993 January	142.6	120.7	156.4	68.3	90.6
February	143.1	120.7	156.3	68.3	90.6
March	143.6	120.9	156.3	69.0	90.7
April	144.0	120.3	155.3	69.0	90.5
May	144.2	120.9	156.3	69.0	90.6
June	144.4	120.7	156.0	69.0	90.3
July	144.4	121.0	156.2	69.3	90.7
August	144.8	121.2	156.3	70.1	90.7
September	145.1	121.6	156.7	70.3	90.9
October	145.7	121.8	156.8	70.8	91.0
November	145.8	121.9	157.0	70.8	91.0
December	145.8	122.3	157.2	71.8	91.1
1994 January	146.2	122.0	156.8	71.8	90.5
February	146.7	123.3	156.9	75.6	90.5
March	147.2	123.2	156.9	75.6	90.2
April	147.4	123.0	156.8	75.3	90.0
May	147.5	123.1	157.0	75.2	90.0
June	148.0	123.3	157.2	75.3	90.3
July	148.4	123.2	157.1	75.3	90.3
August	149.0	123.3	157.1	75.6	90.3
September	149.4	123.3	156.9	75.7	90.3
October	149.5	123.2	156.9	75.7	90.2
November	149.7	123.1	156.6	75.7	90.1
December	149.7	123.1	156.7	75.7	90.2

**Table 5.5**  
**Consumer Price Indices**  
(1982-1984=100)

	<b>All Goods &amp; Services</b>	<b>All Telephone Services</b>	<b>Local Services</b>	<b>Interstate Toll Service</b>	<b>Intrastate Toll Service</b>
1995 January	150.3	124.7	160.9	76.3	85.9
February	150.9	123.8	160.4	74.3	85.6
March	151.4	123.6	160.1	74.1	85.5
April	151.9	123.7	160.0	74.9	85.5
May	152.2	123.5	159.5	74.9	85.7
June	152.5	124.0	160.5	74.9	85.5
July	152.5	124.1	160.4	74.9	86.2
August	152.9	123.9	160.2	74.9	86.0
September	153.2	124.1	160.5	74.9	86.1
October	153.7	124.2	160.5	74.9	86.8
November	153.6	124.1	160.6	74.4	86.7
December	153.5	124.6	160.7	75.8	86.8
1996 January	154.4	124.7	160.6	75.8	87.2
February	154.9	124.7	160.7	75.8	87.2
March	155.7	125.4	160.6	78.0	87.5
April	156.3	123.5	156.8	78.0	88.0
May	156.6	125.4	160.3	78.0	88.6
June	156.7	126.0	161.0	78.4	88.9
July	157.2	126.2	161.3	78.4	89.1
August	157.4	126.5	161.3	78.4	90.9
September	157.8	126.7	161.4	78.6	91.0
October	158.3	126.9	161.9	78.6	91.0
November	158.6	127.0	161.9	78.6	91.3
December	158.6	127.2	162.1	78.6	92.1
1997 January	159.1	127.6	161.7	80.4	91.9
February	159.6	127.6	162.3	78.8	93.6
March	160.0	127.9	162.6	78.8	93.9
April	160.2	128.0	162.7	78.8	93.8

**Table 5.6**  
**Discontinued Producer Price Indices**  
(1972=100, except for finished goods, where 1982=100)

	<b>Finished Goods</b>	<b>Local Services</b>	<b>Local Residential Services</b>	<b>Local Business Services</b>	<b>Local Optional Additional Usage</b>
1983 January	101.2	162.6	168.7	170.8	125.9
February	101.2	162.9	169.0	171.2	125.9
March	101.0	163.4	169.5	172.2	125.9
April	100.9	163.1	169.2	172.0	125.7
May	101.3	163.2	168.4	171.5	125.7
June	101.6	163.3	169.1	172.3	126.2
July	101.8	163.8	169.6	173.1	126.2
August	102.0	163.9	169.7	173.2	126.2
September	101.6	164.3	170.2	173.6	126.2
October	102.5	164.7	170.5	174.0	127.0
November	102.2	164.8	170.6	174.1	127.0
December	102.3	164.8	170.6	174.1	127.0
1984 January	103.2	171.2	177.8	180.3	124.3
February	103.6	171.2	177.8	180.3	124.3
March	103.8	171.2	177.7	180.5	124.3
April	103.8	171.9	177.7	183.7	124.3
May	103.7	172.1	178.1	183.7	124.3
June	103.7	177.9	178.6	208.1	124.3
July	104.2	182.2	181.4	211.0	122.5
August	103.8	185.7	186.0	213.7	122.5
September	103.2	187.6	188.7	215.8	122.5
October	103.9	187.7	188.7	215.9	122.5
November	104.2	187.5	188.3	215.9	122.5
December	104.0	187.6	188.4	216.0	122.5
1985 January	104.1	188.9	189.8	218.2	122.5
February	104.2	190.7	191.9	220.7	122.5
March	104.1	190.6	191.1	220.7	122.5
April	104.4	190.6	191.1	220.7	122.5
May	104.8	191.0	192.3	220.9	122.5
June	104.8	200.6	208.8	222.2	122.5
July	105.1	200.8	209.2	222.2	122.5
August	104.6	201.6	210.4	222.9	122.5
September	103.3	202.2	211.0	223.9	122.5
October	105.0	202.3	211.0	224.6	122.5
November	105.6	204.8	211.7	228.0	130.2
December	105.9	204.8	211.7	228.0	130.2

**Table 5.6**  
**Discontinued Producer Price Indices**  
(1972=100, except for finished goods, where 1982=100)

	<b>Finished Goods</b>	<b>Local Services</b>	<b>Local Residential Services</b>	<b>Local Business Services</b>	<b>Local Optional Additional Usage</b>
1986 January	105.5	206.5	213.4	230.8	130.3
February	104.0	206.7	213.6	231.3	130.3
March	102.6	206.7	213.6	231.3	130.3
April	102.3	206.7	213.6	231.3	130.3
May	102.9	206.7	213.6	231.3	130.3
June	103.1	216.6	230.3	234.0	130.3
July	102.5	216.6	230.3	234.0	130.3
August	102.7	216.9	230.8	234.1	130.3
September	102.4	217.5	231.3	234.6	131.5
October	103.6	217.5	231.3	234.6	131.5
November	103.6	216.8	230.5	233.6	131.5
December	103.5	216.8	230.5	233.6	131.5
1987 January	104.0	216.7	230.1	234.0	131.5
February	104.1	216.6	230.0	234.0	131.5
March	104.3	216.8	230.3	234.1	131.5
April	105.1	216.1	229.2	233.5	131.5
May	105.4	216.1	229.2	233.5	131.5
June	105.5	216.1	229.2	233.5	131.5
July	106.0	220.1	236.6	232.7	131.5
August	105.9	219.9	236.6	232.0	131.5
September	105.7	219.3	236.6	231.9	127.8
October	106.2	219.3	236.6	231.8	127.8
November	106.3	219.3	236.6	231.8	127.8
December	105.8	219.3	236.6	231.8	127.7
1988 January	106.3	218.5	235.9	230.2	127.7
February	106.1	218.2	235.5	230.3	127.7
March	106.3	218.4	235.7	230.6	127.7
April	107.0	218.4	235.7	230.6	127.7
May	107.5	218.4	235.7	230.6	127.7
June	107.7	218.3	235.7	230.6	127.7
July	108.6	217.9	235.1	230.0	127.7
August	108.7	218.1	235.4	230.3	127.7
September	108.6	218.2	235.4	230.2	127.7
October	109.4	219.5	235.9	230.8	127.7
November	109.8	219.5	236.0	230.8	127.7
December	110.0	226.4	247.4	233.0	127.7

**Table 5.6**  
**Discontinued Producer Price Indices**  
(1972=100, except for finished goods, where 1982=100)

	<b>Finished Goods</b>	<b>Local Services</b>	<b>Local Residential Services</b>	<b>Local Business Services</b>	<b>Local Optional Additional Usage</b>
1989 January	111.1	226.2	246.6	234.3	127.5
February	111.7	226.2	246.6	234.4	127.5
March	112.1	226.3	246.7	234.4	127.5
April	113.0	229.5	252.2	234.8	127.5
May	114.2	229.5	252.2	234.8	127.5
June	114.3	229.5	252.3	234.8	127.5
July	114.1	229.6	252.5	234.9	127.5
August	113.4	229.5	252.2	234.7	127.5
September	113.6	229.4	252.2	234.6	127.5
October	114.9	229.4	252.2	234.5	127.5
November	114.9	229.4	252.2	234.5	127.5
December	115.4	229.4	252.2	234.5	127.5
1990 January	117.6	229.3	252.7	234.0	126.1
February	117.4	229.7	253.1	234.3	126.1
March	117.2	229.6	253.1	234.3	126.1
April	117.2	229.4	252.7	234.3	126.1
May	117.7	229.4	252.8	234.3	126.1
June	117.8	229.4	252.8	234.3	126.1
July	118.2	229.5	252.8	234.5	126.1
August	119.3	229.5	252.8	234.5	126.1
September	120.4	229.5	252.8	234.5	126.1
October	122.3	229.8	253.3	234.6	126.1
November	122.9	231.4	256.0	234.6	126.1
December	122.0	231.4	256.0	234.6	126.1
1991 January	122.3	232.6	258.9	232.6	126.1
February	121.4	232.6	258.8	232.6	126.1
March	120.9	232.6	258.9	232.7	126.1
April	121.1	232.8	259.1	232.7	126.1
May	121.8	232.8	259.1	232.7	126.1
June	121.9	232.8	259.1	232.7	126.1
July	121.6	232.8	259.1	232.7	126.1
August	121.7	233.7	260.3	234.0	126.1
September	121.4	233.7	260.3	234.0	126.1
October	122.2	233.7	260.3	234.0	126.1
November	122.3	234.5	261.2	234.7	126.1
December	121.9	234.5	261.3	234.7	126.1



**Table 5.6**  
**Discontinued Producer Price Indices**  
(1972=100, except for finished goods, where 1982=100)

	<b>Finished Goods</b>	<b>Local Services</b>	<b>Local Residential Services</b>	<b>Local Business Services</b>	<b>Local Optional Additional Usage</b>
1992 January	121.8	234.3	261.0	234.7	126.1
February	122.1	234.3	261.0	234.7	126.1
March	122.2	234.3	261.0	234.7	126.1
April	122.4	234.3	261.0	234.7	126.1
May	123.2	234.3	261.0	234.7	126.1
June	123.9	234.3	261.0	234.7	126.1
July	123.7	234.1	260.7	234.6	126.1
August	123.6	234.1	260.7	234.6	126.1
September	123.3	234.1	260.7	234.6	126.1
October	124.4	234.1	260.7	234.6	126.1
November	124.0	234.1	260.7	234.6	126.1
December	123.8	234.1	260.7	234.3	126.1
1993 January	124.2	234.9	262.2	234.5	126.1
February	124.5	234.9	262.2	234.5	126.1
March	124.7	234.9	262.2	234.5	126.1
April	125.5	234.9	262.2	234.5	126.1
May	125.8	234.9	262.2	234.5	126.1
June	125.5	234.9	262.2	234.5	126.1
July	125.3	236.1	262.2	239.8	126.1
August	124.2	236.1	262.2	239.8	126.1
September	123.8	236.2	262.2	240.1	126.1
October	124.6	236.6	263.0	240.0	126.1
November	124.5	236.6	263.0	240.0	126.1
December	124.1	236.4	262.8	239.7	126.1
1994 January	124.5	236.9	263.3	240.6	126.1
February	124.8	236.9	263.3	240.6	126.1
March	124.9	236.9	263.3	240.6	126.1
April	125.0	238.1	265.2	240.7	126.1
May	125.3	238.0	265.0	240.5	126.1
June	125.6	238.0	265.0	240.5	126.1
July	126.0	237.7	264.7	240.0	126.1
August	126.5	237.7	264.7	240.0	126.1
September	125.6	237.6	264.7	239.3	126.1
October	125.8	237.6	264.7	239.3	126.1
November	126.1	237.6	264.7	239.3	126.1
December	126.2	237.6	264.7	239.3	126.1

**Table 5.6**  
**Discontinued Producer Price Indices**  
(1972=100, except for finished goods, where 1982=100)

	<b>Finished Goods</b>	<b>Local Services</b>	<b>Local Residential Services</b>	<b>Local Business Services</b>	<b>Local Optional Additional Usage</b>
1995 January	126.6	243.9	272.8	247.4	126.1
February	126.9	243.9	272.8	247.4	126.1
March	127.1	244.1	273.2	247.6	126.1
April	127.6	244.1	273.2	247.6	126.1
May	128.1	244.2	273.1	248.1	126.1
June	128.2	244.2	273.1	248.1	126.1
July	128.2	244.2	273.1	248.1	126.1
August	128.1	<b>Discontinued</b>			
September	127.9				
October	128.7				
November	128.7				
December	129.1				
1996 January	129.4	<b>Discontinued</b>			
February	129.4				
March	130.1				
April	130.6				
May	131.1				
June	131.7				
July	131.5				
August	131.9				
September	131.8				
October	132.7				
November	132.6				
December	132.7				
1997 <i>January</i> *	132.6	<b>Discontinued</b>			
<i>February</i> *	132.2				
<i>March</i> *	132.2				
<i>April</i> *	131.6				

\* Index is subject to revision four months after release

**Table 5.6**  
**Discontinued Producer Price Indices**  
(1972=100)

	<b>Local Coin Service</b>	<b>Toll Service</b>	<b>Intrastate MTS</b>	<b>Interstate MTS</b>
1983 January	161.0	148.8	151.1	153.4
February	161.0	148.8	151.1	153.4
March	161.0	149.0	151.7	153.4
April	160.9	148.9	151.5	153.4
May	161.8	149.0	151.5	153.4
June	162.9	149.3	152.2	153.4
July	163.2	149.4	152.2	153.4
August	163.2	149.4	152.3	153.4
September	163.4	149.4	152.3	153.4
October	164.3	149.8	153.2	153.4
November	164.5	149.8	153.2	153.4
December	164.5	149.8	153.2	153.4
1984 January	184.2	150.7	155.9	153.4
February	184.2	150.6	155.9	153.4
March	184.4	150.7	155.9	153.4
April	184.6	150.8	156.1	153.4
May	184.6	150.5	155.3	153.4
June	189.0	146.2	155.9	145.6
July	222.3	146.6	157.0	145.6
August	227.2	147.1	158.3	145.6
September	227.2	147.3	158.9	145.6
October	227.2	147.3	158.9	145.6
November	227.5	146.8	157.5	145.6
December	227.5	147.4	159.0	145.6
1985 January	228.2	147.6	159.8	145.6
February	228.9	147.7	159.8	145.6
March	228.9	147.7	159.8	145.6
April	228.9	148.1	161.0	146.6
May	230.5	149.9	162.6	147.9
June	230.7	146.3	162.8	141.3
July	230.7	146.3	162.8	141.3
August	230.8	146.6	163.4	141.3
September	231.2	146.5	163.2	141.3
October	231.3	146.5	163.2	141.3
November	233.8	146.7	163.7	141.3
December	233.8	146.2	162.4	141.3

**Table 5.6**  
**Discontinued Producer Price Indices**  
(1972=100)

	<b>Local Coin Service</b>	<b>Toll Service</b>	<b>Intrastate MTS</b>	<b>Interstate MTS</b>
1986 January	234.3	146.2	162.4	141.3
February	234.3	146.2	162.5	141.3
March	234.3	146.2	162.6	141.3
April	234.3	144.1	156.9	141.3
May	234.3	144.1	156.9	141.3
June	234.6	135.9	156.1	127.2
July	234.6	135.9	156.1	127.1
August	234.7	135.8	156.1	127.1
September	234.9	135.8	156.2	127.1
October	234.9	136.0	156.8	127.1
November	234.9	136.0	156.7	127.1
December	234.9	136.0	156.7	127.1
1987 January	235.0	128.8	156.1	115.3
February	234.9	128.5	155.4	115.3
March	234.9	128.5	155.4	115.3
April	234.9	128.4	155.2	115.3
May	234.9	128.1	154.4	115.3
June	234.9	128.0	154.2	115.3
July	234.9	125.4	152.4	112.1
August	234.6	125.4	152.4	112.1
September	234.5	124.9	151.3	112.1
October	234.5	124.9	151.3	112.1
November	234.5	125.2	152.0	112.1
December	234.5	125.2	152.0	112.1
1988 January	234.3	124.6	152.4	110.1
February	233.1	124.3	151.7	109.1
March	233.1	124.3	151.7	109.1
April	233.1	124.2	151.7	109.1
May	233.1	124.2	151.4	109.1
June	233.1	124.2	151.7	109.1
July	233.1	122.4	146.8	109.1
August	233.1	122.7	147.9	109.1
September	233.4	124.5	147.8	112.8
October	246.0	123.8	146.0	112.8
November	246.0	123.9	146.2	112.8
December	246.2	122.3	146.3	109.7

**Table 5.6**  
**Discontinued Producer Price Indices**  
(1972=100)

	<b>Local Coin Service</b>	<b>Toll Service</b>	<b>Intrastate MTS</b>	<b>Interstate MTS</b>
1989 January	246.6	123.1	148.3	109.7
February	246.6	125.1	153.7	109.7
March	246.6	125.1	153.6	109.7
April	246.7	124.1	153.8	108.0
May	246.7	124.0	153.7	108.0
June	246.7	124.0	153.7	108.0
July	246.7	123.9	153.7	107.8
August	246.7	123.9	153.7	107.8
September	246.7	123.9	153.7	107.8
October	246.6	122.2	149.3	107.8
November	246.6	121.3	146.3	107.8
December	246.6	121.3	147.0	107.8
1990 January	246.6	122.0	148.8	107.9
February	246.7	122.4	149.8	107.9
March	246.7	121.1	146.3	107.9
April	246.6	121.1	146.3	107.9
May	246.6	121.1	146.3	107.9
June	246.6	121.1	146.3	107.9
July	246.6	120.9	146.2	107.9
August	246.6	120.8	146.2	107.7
September	246.6	120.9	146.2	107.7
October	246.7	120.7	145.8	107.7
November	248.5	120.0	143.8	107.7
December	248.5	120.0	143.8	107.7
1991 January	248.8	117.8	140.9	105.6
February	248.8	117.8	140.9	105.6
March	248.8	117.7	140.7	105.4
April	248.8	117.6	140.6	105.4
May	248.8	117.6	138.8	105.4
June	248.8	116.6	138.1	105.4
July	248.8	116.3	138.1	104.7
August	248.8	117.0	138.1	104.7
September	248.8	117.8	140.0	106.3
October	248.8	117.8	140.2	106.3
November	249.2	117.8	140.1	106.3
December	249.4	117.8	140.1	106.3

**Table 5.6**  
**Discontinued Producer Price Indices**  
(1972=100)

	<b>Local Coin Service</b>	<b>Toll Service</b>	<b>Intrastate MTS</b>	<b>Interstate MTS</b>
1992 January	249.4	118.3	139.8	107.4
February	249.4	118.4	140.2	107.4
March	249.4	118.4	140.1	107.4
April	249.4	118.4	140.1	107.4
May	249.4	118.4	140.1	107.4
June	249.4	117.5	137.9	107.4
July	249.5	118.1	139.3	107.4
August	249.5	119.3	142.5	107.4
September	249.5	118.0	142.5	107.4
October	249.5	118.2	143.1	107.4
November	249.5	118.2	141.9	107.4
December	249.4	119.0	141.9	107.4
1993 January	249.4	118.0	140.2	106.6
February	249.4	118.0	142.2	106.6
March	249.4	117.9	140.1	109.4
April	249.4	119.1	140.1	109.4
May	249.4	118.8	140.3	109.4
June	249.4	118.9	140.5	109.4
July	250.1	118.7	140.0	109.4
August	250.1	119.7	139.7	111.5
September	250.1	120.1	140.7	111.5
October	250.1	120.0	140.4	111.5
November	250.1	120.0	140.4	111.5
December	250.1	119.9	140.4	111.5
1994 January	250.1	120.0	140.3	111.5
February	250.1	120.0	140.3	111.5
March	250.1	123.1	139.7	118.3
April	252.3	122.9	139.0	118.3
May	252.3	122.9	139.0	118.3
June	252.3	122.8	139.1	118.3
July	252.3	122.8	139.1	118.3
August	252.3	122.8	139.1	118.3
September	252.2	122.9	139.3	118.3
October	252.2	122.8	139.0	118.3
November	252.2	122.6	138.4	118.3
December	252.2	122.6	138.4	118.3

**Table 5.6**  
**Discontinued Producer Price Indices**  
 (1972=100)

	<b>Local Coin Service</b>	<b>Toll Service</b>	<b>Intrastate MTS</b>	<b>Interstate MTS</b>
1995 January	254.4	121.4	135.4	118.3
February	254.4	124.8	135.8	124.7
March	252.4	124.8	135.8	124.7
April	252.4	124.8	135.8	124.7
May	252.2	124.8	135.8	124.7
June	252.2	124.8	135.8	124.7
July	252.5	127.3	142.4	124.7
August	<b>Discontinued</b>			
September				
October				
November				
December	<b>Discontinued</b>			

**Table 5.6**  
**Discontinued Producer Price Indices**  
(1972=100)

	<b>International MTS</b>	<b>WATS</b>	<b>Interstate WATS</b>	<b>Intrastate WATS</b>	<b>Interstate Private Line</b>
1983 January	92.3	131.8	127.1	144.1	156.9
February	92.3	131.8	127.1	144.3	156.9
March	92.3	131.8	127.1	144.3	156.9
April	92.3	131.8	127.1	144.3	156.9
May	92.3	132.4	127.1	146.3	156.9
June	92.3	132.7	127.1	147.6	156.9
July	92.3	133.7	127.1	151.2	156.9
August	92.3	133.7	127.1	151.2	156.9
September	92.3	133.7	127.1	151.2	156.9
October	92.7	133.7	127.1	151.2	156.9
November	92.7	133.7	127.1	151.2	156.9
December	92.7	133.7	127.1	151.1	158.4
1984 January	92.7	132.2	127.1	145.6	158.4
February	92.5	132.2	127.1	145.9	158.4
March	92.5	132.7	127.1	147.3	158.4
April	92.5	132.6	127.1	147.1	158.4
May	92.5	132.8	127.1	147.8	158.4
June	87.3	127.2	119.6	147.4	158.4
July	86.8	127.6	119.6	148.8	158.4
August	86.8	127.5	119.6	148.5	158.4
September	86.8	127.5	119.6	148.5	158.4
October	86.8	127.6	119.6	148.7	158.4
November	86.8	127.6	119.6	148.7	163.1
December	86.8	127.8	119.6	149.6	163.1
1985 January	86.8	127.6	119.6	148.8	163.1
February	86.8	127.6	119.6	148.8	163.1
March	86.8	127.8	119.6	149.7	159.2
April	86.8	127.8	119.6	149.5	159.2
May	86.8	128.2	119.6	150.9	159.2
June	86.5	123.5	113.1	151.0	168.3
July	86.5	123.5	113.1	151.0	168.3
August	86.5	123.5	113.1	151.0	168.3
September	86.5	123.7	113.1	151.6	168.3
October	86.5	123.6	113.1	151.3	168.3
November	86.5	123.5	113.1	150.9	168.3
December	86.5	123.3	113.1	150.3	168.3



**Table 5.6**  
**Discontinued Producer Price Indices**  
(1972=100)

	<b>International MTS</b>	<b>WATS</b>	<b>Interstate WATS</b>	<b>Intrastate WATS</b>	<b>Interstate Private Line</b>
1986 January	84.2	124.2	113.1	153.6	<b>Discontinued</b>
February	84.2	124.2	113.1	153.6	
March	84.2	124.2	113.1	153.6	
April	84.3	124.4	113.1	154.2	
May	84.3	124.9	113.9	154.1	
June	84.1	115.4	100.8	154.3	
July	84.1	115.3	100.6	154.3	
August	84.1	114.2	100.6	150.2	
September	84.1	113.8	100.6	148.9	
October	84.1	113.8	100.6	148.7	
November	84.1	113.7	100.6	148.6	
December	84.1	113.3	100.6	146.9	
1987 January	84.0	111.1	97.5	146.9	
February	84.0	110.9	97.5	146.4	
March	84.0	110.9	97.5	146.4	
April	84.0	110.9	97.5	146.4	
May	84.0	110.9	97.5	146.4	
June	84.0	110.3	97.5	144.2	
July	84.0	110.3	97.5	144.1	
August	84.0	110.2	97.5	143.7	
September	84.0	110.2	97.5	143.6	
October	84.0	110.1	97.5	143.4	
November	83.8	110.1	97.5	143.4	
December	83.8	110.1	97.5	143.4	
1988 January	83.8	106.4	93.1	141.4	
February	83.8	105.9	93.1	139.8	
March	83.8	105.9	93.1	139.8	
April	83.8	104.9	93.1	136.2	
May	83.8	104.9	93.1	136.2	
June	83.8	104.8	93.1	135.6	
July	83.8	105.0	93.1	135.6	
August	83.8	104.0	93.1	132.9	
September	83.8	103.3	93.1	130.1	
October	83.8	102.7	93.1	128.2	
November	83.8	103.4	93.1	130.5	
December	83.8	102.7	92.5	129.7	

**Table 5.6**  
**Discontinued Producer Price Indices**  
(1972=100)

	<b>International MTS</b>	<b>WATS</b>	<b>Interstate WATS</b>	<b>Intrastate WATS</b>	<b>Interstate Private Line</b>
1989 January	83.8	102.0	90.6	131.7	<b>Discontinued</b>
February	83.8	102.0	90.6	131.7	
March	83.8	102.0	90.6	131.7	
April	83.8	99.2	87.0	131.4	
May	83.8	99.1	87.0	131.0	
June	83.8	99.3	87.0	131.8	
July	83.8	99.1	87.0	131.0	
August	83.8	99.0	87.0	130.5	
September	83.8	98.8	87.0	130.1	
October	83.8	98.8	87.0	130.0	
November	83.8	98.8	87.0	130.0	
December	83.8	98.8	87.0	130.0	
1990 January	83.4	98.4	87.0	128.6	
February	83.4	98.4	87.0	128.6	
March	83.4	98.5	87.0	128.7	
April	83.4	98.5	87.0	128.7	
May	83.4	98.5	87.0	128.7	
June	83.4	98.5	87.0	128.7	
July	83.4	97.2	87.0	124.2	
August	83.4	97.2	87.0	124.2	
September	83.4	97.8	87.0	126.1	
October	83.4	97.8	87.0	126.1	
November	83.4	97.8	87.0	126.1	
December	83.4	97.8	87.0	126.1	
1991 January	83.4	97.5	87.0	125.3	
February	83.4	97.5	87.0	125.3	
March	83.4	97.5	87.0	125.3	
April	83.4	97.5	87.0	125.3	
May	83.4	97.5	87.0	125.3	
June	83.4	97.5	87.0	125.3	
July	83.4	97.5	87.0	125.3	
August	83.4	97.5	87.0	125.3	
September	83.6	97.5	87.0	125.3	
October	83.6	97.5	87.0	125.3	
November	83.6	97.5	87.0	125.3	
December	83.6	97.4	87.0	124.8	

**Table 5.6**  
**Discontinued Producer Price Indices**  
(1972=100)

	<b>International MTS</b>	<b>WATS</b>	<b>Interstate WATS</b>	<b>Intrastate WATS</b>	<b>Interstate Private Line</b>
1992 January	83.6	97.1	87.0	123.9	<b>Discontinued</b>
February	83.6	97.1	87.0	123.9	
March	83.6	97.1	87.0	123.9	
April	83.6	97.1	87.0	123.9	
May	83.6	97.1	87.0	123.9	
June	83.6	97.1	87.0	123.7	
July	83.6	97.1	87.0	123.7	
August	83.6	97.1	87.0	123.7	
September	83.6	97.1	87.0	123.7	
October	83.6	97.0	87.0	123.4	
November	83.6	97.0	87.0	123.4	
December	83.6	97.0	87.0	123.4	
1993 January	78.8	97.0	87.0	123.3	
February	78.8	97.0	87.0	123.3	
March	78.1	97.0	87.0	123.3	
April	78.6	96.5	87.0	121.5	
May	68.6	96.5	87.0	121.5	
June	68.6	96.5	87.0	121.5	
July	68.6	96.5	87.0	121.5	
August	68.6	96.5	87.0	121.5	
September	68.6	96.5	87.0	121.5	
October	68.6	96.5	87.0	121.5	
November	68.6	96.5	87.0	121.5	
December	68.6	96.2	87.0	120.3	
1994 January	68.6	96.2	87.0	120.3	
February	68.6	96.2	87.0	120.3	
March	68.6	96.2	87.0	120.4	
April	68.6	96.2	87.0	120.4	
May	68.6	96.2	87.0	120.4	
June	68.6	95.6	87.0	118.3	
July	68.6	95.6	87.0	118.3	
August	68.6	95.6	87.0	118.3	
September	68.6	95.6	87.0	118.3	
October	68.6	95.6	87.0	118.3	
November	68.6	95.6	87.0	118.3	
December	68.6	95.6	87.0	118.3	

**Table 5.6**  
**Discontinued Producer Price Indices**  
 (1972=100)

	<b>International MTS</b>	<b>WATS</b>	<b>Interstate WATS</b>	<b>Intrastate WATS</b>	<b>Interstate Private Line</b>
1995 January	68.6	95.1	87.0	116.5	<b>Discontinued</b>
February	68.6	95.1	87.0	116.5	
March	68.6	95.1	87.0	116.5	
April	68.6	95.1	87.0	116.5	
May	68.6	95.1	87.0	116.5	
June	68.6	95.1	87.0	116.5	
July	68.6	95.1	87.0	116.5	
August	<b>Discontinued</b>				
September					
October					
November					
December					

**Table 5.7**  
**Producer Price Indices**  
 (June 1995 =100)

	Telephone Communications, except Radiotelephone	Local Service, except Private Lines	Residence Local Service	Business Local Service	Coin Local Service	Other Local Service
BLS Series ID	pcu4813#	pcu4813#1	pcu4813#111	pcu4813#112	pcu4813#113	pcu4813#114
1995 June	100.0	100.0	100.0	100.0	100.0	100.0
July	102.8	100.0	100.0	100.0	100.0	100.0
August	100.7	100.0	100.0	100.0	100.0	100.0
September	100.6	100.1	100.0	100.2	100.6	100.0
October	100.4	100.0	99.8	100.2	100.6	100.0
November	99.6	100.0	99.8	100.2	100.6	100.0
December	99.6	100.0	99.8	100.2	100.6	100.0
1996 January	99.3	100.0	99.8	100.1	100.6	100.0
February	99.6	100.0	99.8	100.2	100.6	100.0
March	99.5	100.1	99.8	100.2	101.9	100.0
April	99.7	100.1	99.8	100.2	101.9	100.0
May	99.5	100.1	99.8	100.2	101.9	100.0
June	99.9	100.2	100.0	100.2	101.9	100.0
July	100.3	100.3	100.0	100.4	102.0	100.0
August	100.6	100.4	100.0	100.5	102.0	100.0
September	100.5	100.4	100.0	100.5	102.0	100.0
October	100.4	100.4	100.0	100.5	102.0	100.0
November	100.1	100.4	100.0	100.5	102.0	100.0
December	99.5	100.4	100.0	100.5	102.0	100.0
1997 January *	100.5	100.4	100.1	100.5	102.0	100.0
February *	100.1	100.4	100.0	100.5	102.0	100.0
March *	99.2	100.3	100.0	100.5	102.0	100.0
April *	99.2	100.4	100.0	100.6	102.0	100.0

\* Producer Price Indices are subject to revision four months after release

**Table 5.7**  
**Producer Price Indices**  
 (June 1995 =100)

	Directory Assistance	Other Local Service, except Directory Assistance	Public Switched Toll Service	Residence Switched Toll Service	Intrastate Residence Switched Toll Service	Interstate Residence Switched Toll Service	International Residence Switched Toll Service
BLS Series ID	pcu4813#11401	pcu4813#11409	pcu4813#2	pcu4813#21	pcu4813#211	pcu4813#212	pcu4813#213
1995 June	100.0	100.0	100.0	100.0	100.0	100.0	100.0
July	100.0	100.0	105.2	102.6	101.2	105.2	99.4
August	100.0	100.0	101.3	101.3	101.1	103.7	95.7
September	100.0	100.0	101.0	101.0	103.2	100.1	97.2
October	100.0	100.0	100.8	102.0	105.8	100.9	96.4
November	100.0	100.0	99.3	99.7	102.9	98.1	94.3
December	100.0	100.0	99.1	100.1	104.2	96.3	97.1
1996 January	100.0	100.0	98.8	99.6	101.6	99.3	95.0
February	100.0	100.0	99.3	100.3	104.7	98.2	95.0
March	100.0	100.0	99.0	101.3	106.3	98.8	92.9
April	100.0	100.0	99.3	100.6	104.2	98.6	93.3
May	100.0	100.0	98.8	100.8	106.0	97.9	93.8
June	100.0	100.0	99.5	101.2	106.0	98.2	94.2
July	100.0	100.0	100.2	102.8	106.4	102.3	92.8
August	100.0	100.0	100.9	103.3	110.4	99.2	90.5
September	100.0	100.0	100.6	102.1	107.8	98.1	89.3
October	100.0	100.0	100.4	101.2	104.0	101.3	85.9
November	100.0	100.0	99.9	100.1	105.7	99.1	79.8
December	100.0	100.0	98.8	99.2	105.1	97.0	77.8
1997 January *	100.0	100.0	100.6	102.9	100.0	111.7	81.2
February *	100.0	100.0	99.8	102.5	99.6	109.2	80.4
March *	100.0	100.0	98.2	100.5	99.9	104.2	79.0
April *	100.0	100.0	98.1	101.4	98.5	107.3	81.7

\* Producer Price Indices are subject to revision four months after release

**Table 5.7**  
**Producer Price Indices**  
 (June 1995 =100)

	Business Switched Toll Service	Business Switched Access Toll Service	Outbound Business Switched Access Toll Service	Intrastate Business Switched Access Toll Service, Outbound	Interstate Business Switched Access Toll Service, Outbound
BLS Series ID	pcu4813#22	pcu4813#221	pcu4813#2211	pcu4813#22111	pcu4813#22112
1995 June	100.0	100.0	100.0	100.0	100.0
July	108.2	104.0	103.8	100.6	102.7
August	101.4	101.4	101.3	100.7	102.7
September	101.0	102.1	103.1	101.0	103.3
October	99.5	100.3	99.4	100.8	98.9
November	98.8	99.2	99.4	100.8	98.5
December	98.0	98.4	99.2	100.3	98.5
1996 January	97.8	98.7	99.1	100.9	95.9
February	98.0	99.0	98.3	101.5	96.5
March	96.3	96.5	96.2	100.7	93.7
April	97.8	98.4	98.0	101.2	94.8
May	96.5	96.7	97.8	101.6	95.1
June	97.5	97.2	97.5	101.1	96.5
July	97.1	97.4	97.2	101.6	95.3
August	98.0	99.4	99.7	102.0	101.6
September	98.9	100.3	101.7	102.2	108.2
October	99.4	102.5	105.0	103.1	114.5
November	99.7	101.3	101.4	101.7	106.0
December	98.2	99.2	97.8	101.8	98.2
1997 January *	97.9	99.0	99.7	102.7	100.3
February *	96.6	98.1	94.1	102.4	89.4
March *	95.5	97.2	93.8	101.5	88.8
April *	94.2	96.9	95.5	101.5	93.7

\* Producer Price Indices are subject to revision four months after release

**Table 5.7**  
**Producer Price Indices**  
(June 1995 =100)

	International Business Switched Access Toll Service, Outbound	Inbound Business Switched Access Toll Service	Intrastate Business Switched Access Toll Service, Inbound	Interstate Business Switched Access Toll Service, Inbound	International Business Switched Access Toll Service, Inbound	Business Special Access Switched Toll Service, except Private Lines
BLS Series ID	pcu4813#22113	pcu4813#2212	pcu4813#22121	pcu4813#22122	pcu4813#22123	pcu4813#222
1995 June	100.0	100.0	100.0	100.0	100.0	100.0
July	116.4	104.4	100.6	107.5	94.6	115.4
August	99.2	101.6	100.7	101.8	103.9	101.3
September	109.4	100.3	98.9	101.1	92.4	99.1
October	97.0	101.9	98.3	104.1	99.3	98.0
November	97.9	98.9	99.5	99.5	95.5	98.0
December	98.9	97.1	101.0	93.5	107.1	97.3
1996 January	102.7	98.0	96.2	95.6	106.6	96.3
February	94.0	100.1	97.4	98.8	101.2	96.4
March	88.7	97.0	95.3	90.4	93.4	95.8
April	96.3	99.0	95.9	94.9	91.0	96.9
May	93.9	94.7	91.2	92.3	88.1	96.2
June	87.6	96.5	96.6	90.0	93.9	98.2
July	88.8	97.7	95.6	89.6	93.2	96.7
August	88.5	98.9	91.4	94.8	100.6	95.6
September	84.0	97.7	92.3	94.2	92.9	96.6
October	87.4	98.1	91.0	94.4	93.6	94.2
November	89.1	101.0	91.6	97.9	86.7	96.9
December	82.2	101.5	90.8	91.5	93.2	96.7
1997 January *	89.2	97.7	89.8	93.1	100.8	96.1
February *	80.8	105.0	84.7	99.4	92.1	94.0
March *	82.7	103.0	88.0	93.8	84.4	92.7
April *	82.7	99.2	91.0	93.3	86.5	89.7

\* Producer Price Indices are subject to revision four months after release



**Table 5.7**  
**Producer Price Indices**  
(June 1995 =100)

	Outbound Business Special Access Switched Toll Service	Intrastate Business Special Access Switched Toll Service, Outbound	Interstate Business Special Access Switched Toll Service, Outbound	International Business Special Access Switched Toll Service, Outbound	Inbound Business Special Access Switched Toll Service
BLS Series ID	pcu4813#2221	pcu4813#22211	pcu4813#22212	pcu4813#22213	pcu4813#2222
1995 June	100.0	100.0	100.0	100.0	100.0
July	119.9	119.0	98.9	152.8	107.3
August	100.3	105.6	98.9	100.4	103.3
September	97.7	98.9	95.3	99.7	101.7
October	98.3	107.4	92.9	105.7	97.5
November	98.5	105.8	94.9	105.1	97.0
December	97.8	100.0	95.3	103.8	96.4
1996 January	95.8	105.2	92.6	97.8	97.1
February	95.1	103.6	91.7	96.6	98.9
March	94.3	101.2	89.4	98.7	98.5
April	95.3	102.1	92.4	97.1	99.9
May	96.6	93.8	92.2	100.6	95.5
June	96.2	102.2	86.6	103.2	101.6
July	95.1	112.2	82.9	101.7	99.4
August	95.9	110.6	89.6	101.2	95.0
September	95.1	100.7	91.6	98.7	99.3
October	93.3	96.0	91.2	93.2	95.9
November	93.6	93.8	94.3	91.5	102.9
December	90.7	90.3	87.7	93.7	107.3
1997 January *	93.7	88.5	92.6	95.3	100.5
February *	91.7	87.6	89.7	96.3	98.2
March *	91.2	88.6	90.1	93.6	95.3
April *	88.0	84.4	84.7	95.9	92.6

\* Producer Price Indices are subject to revision four months after release

**Table 5.7**  
**Producer Price Indices**  
(June 1995 =100)

	Intrastate Business Special Access Switched Toll Service, Inbound	Interstate Business Special Access Switched Toll Service, Inbound	International Business Special Access Switched Toll Service, Inbound	Other Toll Service	Private Line Service	Intrastate Private Line Service
BLS Series ID	pcu4813#22221	pcu4813#22222	pcu4813#22223	pcu4813#29	pcu4813#3	pcu4813#31
1995 June	100.0	100.0	100.0	100.0	100.0	100.0
July	101.6	109.0	99.6	100.0	100.0	100.0
August	107.4	102.2	98.5	100.0	100.0	100.0
September	104.9	99.9	97.6	100.0	100.0	100.0
October	93.8	99.7	97.3	100.0	100.0	100.0
November	93.3	98.7	97.2	100.0	100.0	100.0
December	94.2	97.1	97.1	100.0	100.0	100.0
1996 January	93.5	97.7	97.0	100.0	100.0	100.0
February	96.7	101.5	97.3	100.0	100.0	99.9
March	92.5	100.8	97.4	100.0	100.0	99.9
April	108.5	98.8	97.6	100.0	100.3	101.1
May	98.3	96.0	97.5	100.1	100.4	101.1
June	102.2	105.4	97.7	99.8	100.4	101.1
July	101.2	101.1	97.5	100.3	100.4	101.1
August	101.7	91.1	97.2	100.9	100.4	101.1
September	100.1	100.1	97.1	100.2	100.4	101.1
October	103.0	97.8	97.2	100.2	100.3	100.8
November	113.1	107.5	96.9	100.2	100.3	100.8
December	103.0	118.1	96.7	100.2	100.3	100.8
1997 January *	102.4	106.4	96.5	100.2	100.4	101.2
February *	110.8	98.0	96.7	100.1	100.3	100.8
March *	111.4	92.6	96.6	100.2	100.3	100.8
April *	105.9	92.6	96.6	100.2	100.3	100.8

\* Producer Price Indices are subject to revision four months after release

**Table 5.7**  
**Producer Price Indices**  
 (June 1995 =100)

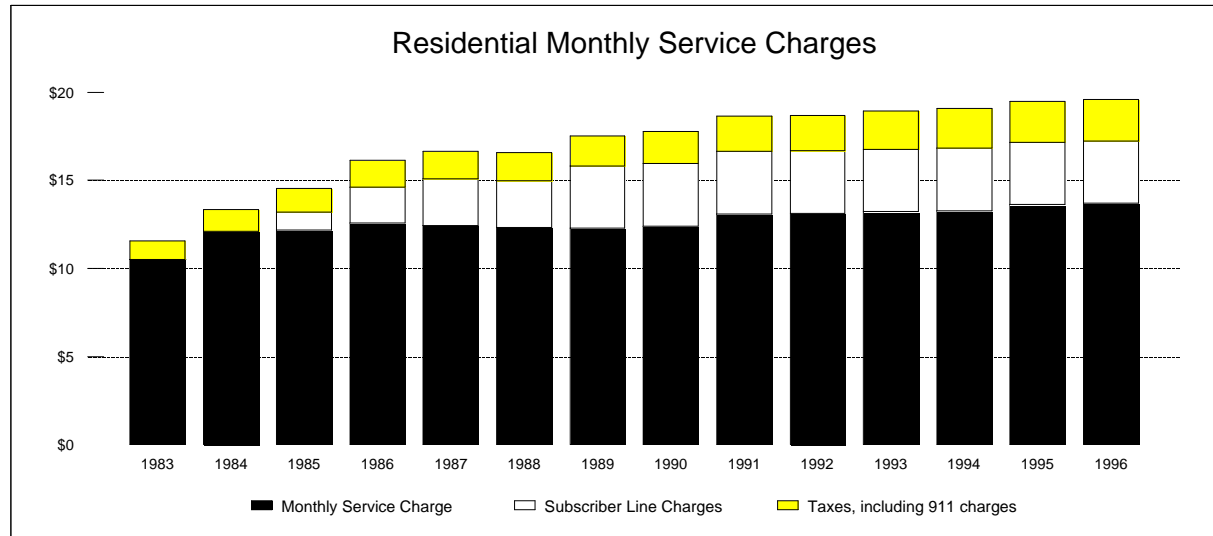
	LEC Intrastate Private Line Service	Other Telephone Services	Directory Advertising	Other Telephone Services
BLS Series ID	pcu4813#311	pcu4813#9	pcu4813#91	pcu4813#99
1995 June	100.0	100.0	100.0	100.0
July	100.0	100.0	100.0	100.0
August	100.0	100.0	100.0	100.0
September	100.0	100.0	100.0	100.0
October	100.0	100.0	100.0	100.0
November	100.0	100.2	100.3	100.0
December	100.0	100.2	100.3	100.0
1996 January	100.0	100.2	100.3	100.0
February	99.9	100.2	100.3	100.0
March	99.9	100.2	100.3	100.0
April	101.2	100.2	100.3	100.0
May	101.2	100.2	100.3	100.0
June	101.2	100.2	100.3	100.0
July	101.2	100.2	100.2	100.0
August	101.2	100.2	100.3	100.0
September	101.2	100.2	100.2	100.0
October	100.9	100.4	100.5	100.0
November	100.9	100.6	100.7	100.0
December	100.9	100.6	100.7	100.0
1997 January *	101.3	100.5	100.7	100.0
February *	100.9	100.5	100.7	100.0
March *	100.9	100.6	100.7	100.0
April *	100.9	100.5	100.6	100.0

\* Producer Price Indices are subject to revision four months after release

**Table 5.8**  
Average Monthly Residential Rates  
(in October of each year)

	1983	1984	1985	1986	1987	1988	1989	1990	1991	1992	1993	1994	1995	1996
Monthly Unlimited Service Charge	\$10.50	\$12.10	\$12.17	\$12.58	\$12.44	\$12.32	\$12.30	\$12.39	\$13.10	\$13.12	\$13.22	\$13.28	\$13.62	\$13.70
Subscriber Line Charges *	0.00	0.00	1.01	2.04	2.66	2.67	3.53	3.55	3.56	3.55	3.55	3.55	3.54	3.54
Taxes, including 911 charges	1.08	1.25	1.36	1.51	1.56	1.58	1.70	1.85	2.00	2.03	2.17	2.24	2.34	2.34
<b>Total</b>	11.58	13.35	14.54	16.13	16.66	16.57	17.53	17.79	18.66	18.70	18.94	19.07	19.50	19.58
Lowest Generally Available Monthly Rate	5.37	5.62	5.75	5.96	5.81	5.67	5.67	5.68	6.18	6.22	6.43	6.47	6.68	7.06
Subscriber Line Charges *	0.00	0.00	1.01	2.04	2.66	2.67	3.53	3.55	3.56	3.55	3.55	3.55	3.54	3.54
Taxes, including 911 charges	0.56	0.58	0.70	0.84	0.94	0.91	1.03	1.15	1.28	1.31	1.45	1.50	1.56	1.62
<b>Total</b>	5.93	6.20	7.46	8.84	9.41	9.25	10.23	10.38	11.02	11.08	11.43	11.52	11.78	12.22
Connection Charge	35.01	43.71	44.32	45.63	44.04	42.94	42.71	43.06	42.00	41.52	41.38	41.26	40.91	41.08
Taxes	1.75	2.19	2.22	2.28	2.20	2.11	2.24	2.32	2.19	2.18	2.21	2.27	2.42	2.35
<b>Total</b>	36.76	45.90	46.54	47.91	46.24	45.05	44.95	45.38	44.19	43.70	43.59	43.53	43.33	43.42

\* Includes both Federal and State subscriber line charges.

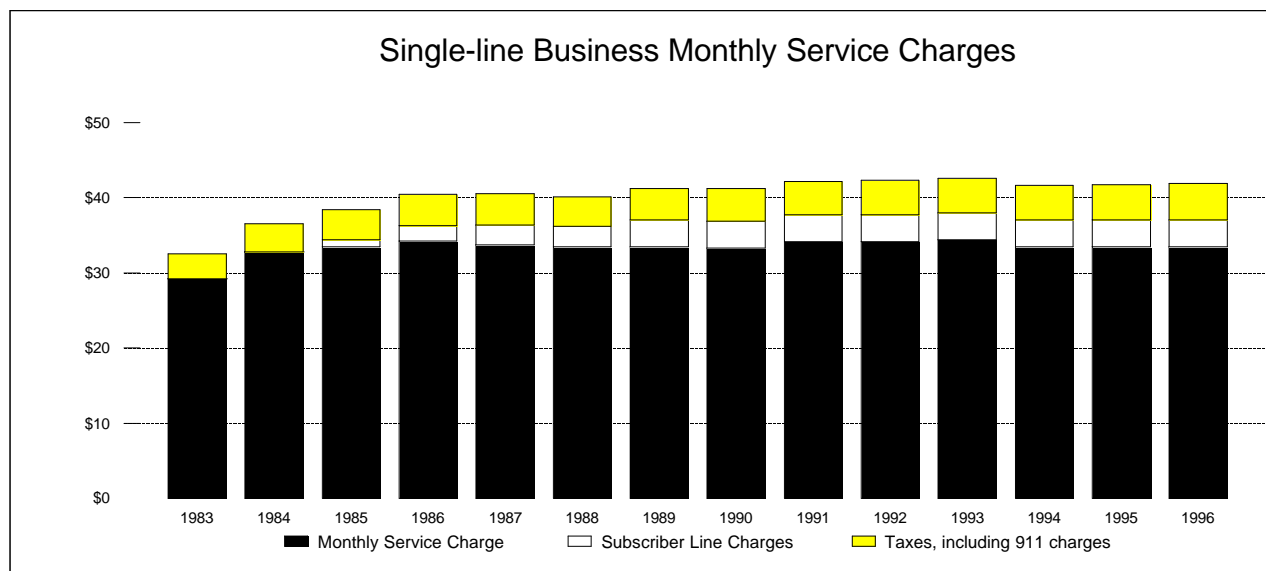


**Table 5.9**  
Average Monthly Single-line Business Rates  
(in October of each year)

	1983	1984	1985	1986	1987	1988	1989	1990	1991	1992	1993	1994	1995	1996
Representative Rate *	\$29.16	\$32.74	\$33.42	\$34.26	\$33.71	\$33.48	\$33.49	\$33.32	\$34.13	\$34.16	\$34.37	\$33.46	\$33.43	\$33.45
Subscriber Line Charges **	0.00	0.00	1.01	2.04	2.68	2.69	3.55	3.57	3.57	3.56	3.57	3.57	3.57	3.56
Taxes, including 911 charges	3.35	3.77	3.96	4.17	4.18	3.95	4.21	4.32	4.42	4.57	4.63	4.61	4.77	4.84
<b>Total</b>	32.51	36.51	38.39	40.47	40.57	40.12	41.25	41.21	42.12	42.29	42.57	41.64	41.77	41.85
Connection Charge	56.04	68.84	70.82	72.94	72.15	72.51	72.75	73.25	73.88	73.74	72.58	70.80	68.14	68.62
Taxes	3.08	3.79	3.90	4.01	3.97	3.92	4.06	4.15	4.32	4.33	4.25	4.13	4.18	4.19
<b>Total</b>	59.12	72.63	74.72	76.95	76.12	76.43	76.81	77.40	78.20	78.07	76.83	74.93	72.32	72.81

\* The "representative" rate is the monthly single-line rate for touch-tone service with unlimited service where offered, and the measured service rate with 200 messages in other cities.

\*\* Includes both Federal and State subscriber line charges.



**Table 5.10**

Changes in the Price of Directly Dialed 5-Minute Long Distance Calls

Calling Distance in airline miles, rate center to rate center		AT&T Interstate Rates					
		Residential Rates			Commercial Rates		
		January 1984	May 1997	Percentage change	January 1984	May 1997	Percentage change
1 - 10	Day	\$0.96	\$1.30	35.4%	\$0.96	\$1.55	61.5%
	Evening	\$0.57	\$0.70	22.8%	\$0.57	\$0.99	73.7%
	Night	\$0.38	\$0.65	71.1%	\$0.38	\$0.99	160.5%
11 - 22	Day	\$1.28	\$1.40	9.4%	\$1.28	\$1.55	21.1%
	Evening	\$0.76	\$0.80	5.3%	\$0.76	\$0.99	30.3%
	Night	\$0.51	\$0.65	27.5%	\$0.51	\$0.99	94.1%
23 - 55	Day	\$1.60	\$1.40	-12.5%	\$1.60	\$1.55	-3.1%
	Evening	\$0.96	\$0.85	-11.5%	\$0.96	\$0.99	3.1%
	Night	\$0.64	\$0.65	1.6%	\$0.64	\$0.99	54.7%
56 - 124	Day	\$2.05	\$1.40	-31.7%	\$2.05	\$1.67	-18.5%
	Evening	\$1.22	\$0.85	-30.3%	\$1.22	\$1.05	-13.9%
	Night	\$0.82	\$0.75	-8.5%	\$0.82	\$1.05	28.0%
125 - 292	Day	\$2.14	\$1.45	-32.2%	\$2.14	\$1.67	-22.0%
	Evening	\$1.28	\$0.85	-33.6%	\$1.28	\$1.05	-18.0%
	Night	\$0.85	\$0.75	-11.8%	\$0.85	\$1.05	23.5%
293 - 430	Day	\$2.27	\$1.50	-33.9%	\$2.27	\$1.67	-26.4%
	Evening	\$1.36	\$0.95	-30.1%	\$1.36	\$1.05	-22.8%
	Night	\$0.90	\$0.75	-16.7%	\$0.90	\$1.05	16.7%
431 - 925	Day	\$2.34	\$1.50	-35.9%	\$2.34	\$1.67	-28.6%
	Evening	\$1.40	\$0.95	-32.1%	\$1.40	\$1.05	-25.0%
	Night	\$0.93	\$0.80	-14.0%	\$0.93	\$1.05	12.9%
926 - 1910	Day	\$2.40	\$1.50	-37.5%	\$2.40	\$1.75	-27.1%
	Evening	\$1.44	\$0.95	-34.0%	\$1.44	\$1.10	-23.6%
	Night	\$0.96	\$0.80	-16.7%	\$0.96	\$1.10	14.6%
1911 - 3000	Day	\$2.70	\$1.55	-42.6%	\$2.70	\$1.75	-35.2%
	Evening	\$1.62	\$0.95	-41.4%	\$1.62	\$1.10	-32.1%
	Night	\$1.08	\$0.80	-25.9%	\$1.08	\$1.10	1.9%
3001 - 4250	Day	\$2.80	\$1.60	-42.9%	\$2.80	\$2.01	-28.2%
	Evening	\$1.68	\$1.10	-34.5%	\$1.68	\$1.41	-16.1%
	Night	\$1.12	\$0.85	-24.1%	\$1.12	\$1.41	25.9%
4251 - 5750	Day	\$2.91	\$1.75	-39.9%	\$2.91	\$2.19	-24.7%
	Evening	\$1.74	\$1.15	-33.9%	\$1.74	\$1.47	-15.5%
	Night	\$1.16	\$0.85	-26.7%	\$1.16	\$1.47	26.7%

**Table 5.10**  
Changes in the Price of Directly Dialed 5-Minute Long Distance Calls

Calling Distance in airline miles, rate center to rate center		MCI Interstate Rates					
		Residential Rates			Commercial Rates		
		January 1984	May 1997	Percentage change	January 1984	May 1997	Percentage change
1 - 10	Day	\$0.76	\$1.30	71.1%	\$0.76	\$1.54	102.6%
	Evening	\$0.46	\$0.70	52.2%	\$0.46	\$0.98	113.0%
	Night	\$0.30	\$0.65	116.7%	\$0.30	\$0.98	226.7%
11 - 22	Day	\$1.05	\$1.40	33.3%	\$1.05	\$1.54	46.7%
	Evening	\$0.63	\$0.80	27.0%	\$0.63	\$0.98	55.6%
	Night	\$0.42	\$0.65	54.8%	\$0.42	\$0.98	133.3%
23 - 55	Day	\$1.35	\$1.40	3.7%	\$1.35	\$1.54	14.1%
	Evening	\$0.69	\$0.85	23.2%	\$0.69	\$0.98	42.0%
	Night	\$0.54	\$0.65	20.4%	\$0.54	\$0.98	81.5%
56 - 124	Day	\$1.64	\$1.40	-14.6%	\$1.64	\$1.66	1.2%
	Evening	\$0.76	\$0.85	11.8%	\$0.76	\$1.04	36.8%
	Night	\$0.59	\$0.75	27.1%	\$0.59	\$1.04	76.3%
125 - 292	Day	\$1.71	\$1.45	-15.2%	\$1.71	\$1.66	-2.9%
	Evening	\$0.84	\$0.85	1.2%	\$0.84	\$1.04	23.8%
	Night	\$0.65	\$0.75	15.4%	\$0.65	\$1.04	60.0%
293 - 430	Day	\$1.81	\$1.50	-17.1%	\$1.81	\$1.66	-8.3%
	Evening	\$0.90	\$0.95	5.6%	\$0.90	\$1.04	15.6%
	Night	\$0.70	\$0.75	7.1%	\$0.70	\$1.04	48.6%
431 - 925	Day	\$1.87	\$1.50	-19.8%	\$1.87	\$1.66	-11.2%
	Evening	\$0.93	\$0.95	2.2%	\$0.93	\$1.04	11.8%
	Night	\$0.72	\$0.80	11.1%	\$0.72	\$1.04	44.4%
926 - 1910	Day	\$1.92	\$1.50	-21.9%	\$1.92	\$1.74	-9.4%
	Evening	\$0.95	\$0.95	0.0%	\$0.95	\$1.08	13.7%
	Night	\$0.74	\$0.80	8.1%	\$0.74	\$1.08	45.9%
1911 - 3000	Day	\$2.16	\$1.55	-28.2%	\$2.16	\$1.74	-19.4%
	Evening	\$1.06	\$0.95	-10.4%	\$1.06	\$1.08	1.9%
	Night	\$0.82	\$0.80	-2.4%	\$0.82	\$1.08	31.7%
3001 - 4250	Day	\$2.80	\$1.60	-42.9%	\$2.80	\$2.00	-28.6%
	Evening	\$1.68	\$1.20	-28.6%	\$1.68	\$1.40	-16.7%
	Night	\$1.12	\$0.85	-24.1%	\$1.12	\$1.40	25.0%
4251 - 5750	Day	\$2.91	\$1.75	-39.9%	\$2.91	\$2.18	-25.1%
	Evening	\$1.74	\$1.15	-33.9%	\$1.74	\$1.46	-16.1%
	Night	\$1.16	\$0.85	-26.7%	\$1.16	\$1.46	25.9%

**Table 5.10**  
Changes in the Price of Directly Dialed 5-Minute Long Distance Calls

Calling Distance in airline miles, rate center to rate center		Sprint Interstate Rates					
		Residential Rates			Commercial Rates		
		January 1984	May 1997	Percentage change	January 1984	May 1997	Percentage change
1 - 10	Day	\$0.77	\$1.30	68.8%	\$0.77	\$1.19	54.5%
	Evening	\$0.44	\$0.70	59.1%	\$0.44	\$1.19	170.5%
	Night	\$0.29	\$0.65	124.1%	\$0.29	\$1.19	310.3%
11 - 22	Day	\$1.04	\$1.40	34.6%	\$1.04	\$1.19	14.4%
	Evening	\$0.59	\$0.80	35.6%	\$0.59	\$1.19	101.7%
	Night	\$0.39	\$0.65	66.7%	\$0.39	\$1.19	205.1%
23 - 55	Day	\$1.34	\$1.40	4.5%	\$1.34	\$1.19	-11.2%
	Evening	\$0.72	\$0.85	18.1%	\$0.72	\$1.19	65.3%
	Night	\$0.56	\$0.65	16.1%	\$0.56	\$1.19	112.5%
56 - 124 *	Day	\$1.64	\$1.40	-14.6%	\$1.64	\$1.19	-27.4%
	Evening	\$0.79	\$0.85	7.6%	\$0.79	\$1.19	50.6%
	Night	\$0.59	\$0.75	27.1%	\$0.59	\$1.19	101.7%
125 - 292	Day	\$1.71	\$1.45	-15.2%	\$1.71	\$1.19	-30.4%
	Evening	\$0.84	\$0.85	1.2%	\$0.84	\$1.19	41.7%
	Night	\$0.64	\$0.75	17.2%	\$0.64	\$1.19	85.9%
293 - 430	Day	\$1.81	\$1.50	-17.1%	\$1.81	\$1.19	-34.3%
	Evening	\$0.85	\$0.95	11.8%	\$0.85	\$1.19	40.0%
	Night	\$0.66	\$0.75	13.6%	\$0.66	\$1.19	80.3%
431 - 925	Day	\$1.87	\$1.50	-19.8%	\$1.87	\$1.19	-36.4%
	Evening	\$0.89	\$0.95	6.7%	\$0.89	\$1.19	33.7%
	Night	\$0.69	\$0.80	15.9%	\$0.69	\$1.19	72.5%
926 - 1910	Day	\$1.91	\$1.50	-21.5%	\$1.91	\$1.19	-37.7%
	Evening	\$0.91	\$0.95	4.4%	\$0.91	\$1.19	30.8%
	Night	\$0.73	\$0.80	9.6%	\$0.73	\$1.19	63.0%
1911 - 3000	Day	\$2.16	\$1.55	-28.2%	\$2.16	\$1.19	-44.9%
	Evening	\$0.99	\$0.95	-4.0%	\$0.99	\$1.19	20.2%
	Night	\$0.77	\$0.80	3.9%	\$0.77	\$1.19	54.5%
3001 - 4250	Day	\$2.80	\$1.60	-42.9%	\$2.80	\$1.19	-57.5%
	Evening	\$1.68	\$1.10	-34.5%	\$1.68	\$1.19	-29.2%
	Night	\$1.12	\$0.85	-24.1%	\$1.12	\$1.19	6.3%
4251 - 5750	Day	\$2.91	\$1.75	-39.9%	\$2.91	\$1.19	-59.1%
	Evening	\$1.74	\$1.15	-33.9%	\$1.74	\$1.19	-31.6%
	Night	\$1.16	\$0.85	-26.7%	\$1.16	\$1.19	2.6%



**Table 5.11**

National Average of Interstate Subscriber Line Charges  
(Dollars per Month per Line) \*

Rates in Effect		Residential and Single-Line Business **	Multiline Business #	Embedded Centrex Rate Cap ##
From	To			
05/26/84	05/31/85	\$0.00	\$4.99	\$2.00
06/01/85	09/30/85	1.00	4.99	2.00
10/01/85	05/31/86	1.00	4.97	2.00
06/01/86	12/31/86	2.00	4.97	3.00
01/01/87	06/30/87	2.00	5.12	3.00
07/01/87	12/31/87	2.60	5.12	4.00
01/01/88	11/30/88	2.60	5.01	4.00
12/01/88	03/31/89	3.20	5.01	5.00
04/01/89	12/31/89	3.50	4.94	6.00
01/01/90	06/30/90	3.48	4.84	6.00
07/01/90	12/31/90	3.48	4.83	6.00
01/01/91	06/30/91	3.48	4.77	6.00
07/01/91	11/27/91	3.49	4.74	6.00
11/28/91	06/30/92	3.49	4.76	6.00
07/01/92	06/30/93	3.49	4.68	6.00
07/01/93	06/30/94	3.50	5.37	6.00
07/01/94	06/30/95	3.50	5.45	6.00
07/01/95	06/30/96	3.50	5.50	6.00
07/01/96	06/30/97	3.50	5.53	6.00

\* The weighted average national rates are calculated from the rates of price cap companies and companies in the National Exchange Carrier Association (NECA) pool and excludes companies filing under rate of return or optional incentive rules. The carriers covered comprise approximately 95% of the industry total. In developing the weighted average rate, the weight given an individual company's rate equals its number of telephone subscribers as a percent of the total for carriers included.

\*\* The rate charged to residential and single-line business customers has been capped at \$3.50 since 1989. Carriers are not permitted to charge the full amount unless justified by their underlying costs. As a result, a few companies charge less than the full \$3.50.

# The rate charged to multiline business customers has been capped at \$6.00 since subscriber line charges were introduced. Carriers are not permitted to charge the full amount unless justified by the underlying costs. As a result, some companies charge less than the full \$6.00.

## This is the maximum rate applied to centrex lines that were in place or on order as of July 27, 1983. Prior to April 1, 1989, these "embedded" centrex lines paid a lower subscriber line charge than did new centrex lines. Customers with new centrex lines paid the multiline business subscriber line charge. Since April 1, 1989, however, all centrex lines pay the multiline business subscriber line charge, which is capped at \$6.00.

**Table 5.12**

National Average of Interstate Access Charges  
(Switched "Premium" Service in Cents per Minute) \*

Rates in Effect		Originating CCL	Terminating CCL	Traffic Sensitive	Fixed-Charge Transport	Access Charge
From	To	¢ Per Minute	¢ Per Minute	¢ Per Minute **	¢ Per Minute #	¢ Per Conversation Minute ##
		(A)	(B)	(C)	(D)	(E)
05/26/84	01/14/85	5.24	5.24	3.10		17.26
01/15/85	05/31/85	5.43	5.43	3.10		17.66
06/01/85	09/30/85	4.71	4.71	3.10		16.17
10/01/85	05/31/86	4.33	4.33	3.10		15.38
06/01/86	12/31/86	3.04	4.33	3.10		14.00
01/01/87	06/30/87	1.55	4.33	3.10		12.41
07/01/87	12/31/87	0.69	4.33	3.10		11.49
01/01/88	11/30/88	0.00	4.14	3.10		10.56
12/01/88	02/14/89	0.00	3.39	3.00		9.60
02/15/89	03/31/89	0.00	3.25	3.00		9.46
04/01/89	12/31/89	1.00	1.83	3.00		9.11
01/01/90	06/30/90	1.00	1.53	2.50		7.78
07/01/90	12/31/90	1.00	1.23	2.50		7.48
01/01/91	06/30/91	1.00	1.14	2.40		7.18
07/01/91	06/30/92	0.88	1.06	2.40		6.97
07/01/92	06/30/93	0.79	0.95	2.40		6.76
07/01/93	06/30/94	0.88	1.16	2.20		6.66
07/01/94	06/30/95	0.84	1.08	2.10	0.28	6.89
07/01/95	06/30/96	0.74	0.89	1.96	0.21	6.16
07/01/96	06/30/97	0.72	0.89	1.95	0.17	6.04

\* The weighted average national charges are calculated from the charges of price cap companies and companies in the National Exchange Carrier Association (NECA) pool and excludes companies filing under rate of return or optional incentive rules. The carriers covered comprise approximately 95% of the industry total. Weights for calculating nationwide averages are based on company minutes of use (mou). The specific items being weighted are: originating carrier common line (CCL) mou for Column A; terminating CCL mou for Column B; and local switching mou for Columns C and D. Prior to 4/1/89, CCL charges were nationally uniform. Data in this table have been revised from data originally published.

\*\* Column C equals revenue from per minute charges (non-CCL) divided by local switching minutes.

# Column D is the average revenue per minute from fixed-monthly access charges (entrance facility and direct trunked transport charges). Beginning 12/30/93, transport service revenue was recovered through a combination of per minute and fixed-monthly charges. Starting with the 7/1/94 period, Column D equals revenue from fixed monthly charges divided by local switching minutes of use. In prior periods in this table, all transport revenue is reflected in Column C.

## Column E is the switched access charge per conversation minute. Originating access minutes are about 7% higher than terminating access minutes, because originating access minutes include time involved with call set-up and uncompleted calls. The access charge per conversation minute for a call that both originates and terminates with LECs, equals [ 1.07 x ( Col. A + Col. C ) ] + Col. B + Col. C + ( 2 x Col. D).

**TABLE 5.13**

CCL Premium Rates by Carrier  
(Price Cap and NECA Pool Companies)

Company *	Rates Effective 7/01/95			Rates Effective 7/01/96			Percent Change in Average Rate	CCL Minutes of Use **	
	Originating	Terminating	Average	Originating	Terminating	Average		Originating (Millions)	Terminating (Millions)
Ameritech	\$0.0050	\$0.0050	\$0.0050	\$0.0043	\$0.0043	\$0.0043	-15.0%	17,222	27,293
Bell Atlantic	\$0.0057	\$0.0057	\$0.0057	\$0.0055	\$0.0055	\$0.0055	-3.5%	22,619	39,003
BellSouth	\$0.0100	\$0.0120	\$0.0112	\$0.0100	\$0.0120	\$0.0112	0.0%	24,983	36,469
NYNEX	\$0.0077	\$0.0077	\$0.0077	\$0.0072	\$0.0072	\$0.0072	-6.5%	22,212	28,903
Pacific Telesis	\$0.0058	\$0.0058	\$0.0058	\$0.0055	\$0.0055	\$0.0055	-4.9%	12,036	20,611
Southwestern	\$0.0078	\$0.0078	\$0.0078	\$0.0075	\$0.0075	\$0.0075	-4.3%	13,605	21,616
U S West	\$0.0058	\$0.0058	\$0.0058	\$0.0056	\$0.0056	\$0.0056	-3.2%	16,565	31,597
GTE	\$0.0100	\$0.0222	\$0.0173	\$0.0100	\$0.0219	\$0.0171	-1.0%	16,540	24,385
Citizens	n / a	n / a	n / a	\$0.0100	\$0.0384	\$0.0232	n / a	1,099	962
Aliant (formerly Lincoln)	\$0.0014	\$0.0014	\$0.0014	\$0.0016	\$0.0016	\$0.0016	17.2%	231	383
Frontier	\$0.0084	\$0.0096	\$0.0092	\$0.0081	\$0.0091	\$0.0087	-5.0%	780	1,353
Southern New England	\$0.0058	\$0.0058	\$0.0058	\$0.0057	\$0.0057	\$0.0057	-1.5%	2,941	4,337
Sprint LTCs	\$0.0085	0.0139	\$0.0117	\$0.0087	\$0.0158	\$0.0129	10.1%	7,440	10,650
NECA Pool Companies	\$0.0083	\$0.0083	\$0.0083	\$0.0082	\$0.0082	\$0.0082	-1.2%	9,684	11,292
Total Minutes of Use								167,957	258,854
Average CCL Rate Weighted by minutes	\$0.0074	\$0.0089	\$0.0083	\$0.0072	\$0.0089	\$0.0082	-1.2%		

\* Where a company has different rates in different operating areas, the rates shown represent weighted averages for all of the company's regions and affiliates.

\*\* Premium carrier common line (CCL) minutes of use in calendar year 1996.

**Table 5.14**  
Interstate Access Charges by Carrier  
(Price Cap and NECA Pool Companies)

Company	Rates Effective 7/01/96 *				Switched Access Charge Per Conversation Minute ## (E)	1996 Minutes of Use (Millions)		
	Originating CCL Per Minute (A)	Terminating CCL Per Minute (B)	Traffic Sensitive Per Minute ** (C)	Fixed-Charge Transport Per Minute # (D)		CCL Originating (F)	CCL Terminating (G)	Switching (H)
	Ameritech	\$0.0043	\$0.0043	\$0.0174		\$0.0020	\$0.0488	17,222
Bell Atlantic	\$0.0055	\$0.0055	\$0.0144	\$0.0016	\$0.0444	22,619	39,003	61,611
BellSouth	\$0.0100	\$0.0120	\$0.0139	\$0.0021	\$0.0557	24,983	36,469	61,879
NYNEX	\$0.0072	\$0.0072	\$0.0272	\$0.0019	\$0.0750	22,212	28,903	51,489
Pacific Telesis	\$0.0055	\$0.0055	\$0.0150	\$0.0020	\$0.0465	12,036	20,611	32,743
Southwestern	\$0.0075	\$0.0075	\$0.0164	\$0.0015	\$0.0524	13,605	21,616	35,576
U S West	\$0.0056	\$0.0056	\$0.0198	\$0.0017	\$0.0560	16,565	31,597	48,398
GTE	\$0.0100	\$0.0219	\$0.0203	\$0.0010	\$0.0766	16,540	24,385	41,687
Citizens	\$0.0100	\$0.0384	\$0.0330	\$0.0008	\$0.1190	1,099	962	2,113
Aliant (formerly Lincoln)	\$0.0016	\$0.0016	\$0.0256	\$0.0013	\$0.0590	231	383	616
Frontier	\$0.0087	\$0.0091	\$0.0240	\$0.0012	\$0.0705	780	1,353	2,164
Southern New England	\$0.0057	\$0.0057	\$0.0203	\$0.0019	\$0.0576	2,941	4,337	7,296
Sprint LTCs	\$0.0087	\$0.0158	\$0.0180	\$0.0012	\$0.0648	7,440	10,650	18,245
NECA Pool Companies	\$0.0082	\$0.0082	\$0.0579	\$0.0007	\$0.1382	9,684	11,292	12,105
Weighted-Average Rate	\$0.0072	\$0.0089	\$0.0195	\$0.0017	\$0.0604	167,957	258,854	420,676

\* Where a company has different charges in different operating areas, the charges shown represent weighted averages for all of the company's regions and affiliates. Weights for calculating carrier averages are based on company minutes of use (mou). The specific items being weighted are: originating carrier common line (CCL) mou for Column A; terminating CCL mou for Column B; and switching mou for Columns C and D.

\*\* Column C equals revenue from per minute charges (non-CCL) divided by switching minutes.

# Column D is the average revenue per minute from fixed monthly access charges (representing entrance facility and direct trunked transport charges). Beginning 12/30/93, transport service revenue was recovered through a combination of per minute and fixed monthly charges. Column D equals revenue from fixed monthly charges divided by switching minutes of use.

## Column E is the switched access charge per conversation minute. Originating access minutes are about 7% higher than terminating access minutes, because originating access minutes include time involved with call set-up and uncompleted calls. The access charge per conversation minute for a call that both originates and terminates with LECs, equals [ 1.07 x ( Col. A + Col. C ) ] + Col. B + Col. C + ( 2 x Col. D ).

**Table 5.15**  
 Monthly Charges to Long Distance Carriers  
 that are Billed on a Per-line Basis \*

Rates in Effect		Monthly Charges per Access Line			Access Lines (millions)	Approximate Monthly Billing (\$ millions)
		Universal Service Fund	Lifeline Link-Up Programs	Total Charge per Access Line		
From	To					
04/01/89	06/30/89	\$0.1753	\$0.0467	\$0.2220	121.1	\$26.35
07/01/89	12/31/89	0.1752	0.0556	0.2308	121.3	27.44
01/01/90	06/30/90	0.2476	0.0366	0.2842	123.1	34.29
07/01/90	12/30/90	0.2367	0.0412	0.2779	125.4	34.15
01/01/91	01/31/91	0.2696	0.0593	0.3289	126.9	40.90
02/01/91	06/30/91	0.3090	0.0593	0.3683	126.9	45.80
07/01/91	12/31/91	0.3185	0.0534	0.3719	129.0	47.02
01/01/92	06/30/92	0.3823	0.0789	0.4612	130.6	59.03
07/01/92	12/31/92	0.3901	0.0733	0.4634	132.0	59.95
01/01/93	01/31/93	0.4404	0.0777	0.5181	133.0	67.53
02/01/93	06/31/93	0.4624	0.0777	0.5401	133.0	70.40
07/01/93	12/31/93	0.4561	0.0809	0.5370	136.4	71.78
01/01/94	01/31/94	0.4520	0.0841	0.5361	138.2	74.09
02/01/94	06/30/94	0.4408	0.0841	0.5249	138.2	72.54
07/01/94	12/31/94	0.4295	0.0901	0.5196	140.0	72.74
01/01/95	06/30/95	0.4335	0.0848	0.5183	142.2	73.70
07/01/95	12/31/95	0.4214	0.0936	0.5150	145.3	74.83
01/01/96	06/30/96	0.4182	0.0928	0.5110	147.0	75.12
07/01/96	12/31/96	0.4365	0.0947	0.5312	149.2	79.26
01/01/97	06/30/97	0.4380	0.0991	0.5371	152.1	81.69

\* Billings are made by the National Exchange Carrier Association to interexchange carriers that have more than .05% of the nationwide total presubscribed lines. These carriers serve approximately 98% of total presubscribed lines. The 152.1 million access lines shown for Jan. 1, 1997 are the number of qualified USF loops of billed carriers contributing to the Universal Service Fund.