



Winter Fuels Outlook: 2002-2003

Selected Table and Figure Updates Based on the March 2003 Short-Term Energy Outlook

Table WF1. Illustrative Consumer Prices and Expenditures for Heating Fuels During the Winter

	1999-2000 Actual	2000-2001 Actual	2001-2002 Actual	2002-2003 Base Forecast
Natural Gas (Midwest)				
Consumption (mcf)	81.7	99.1	81.3	92.1
Avg. Price (\$/mcf)	6.69	9.54	7.33	8.43
Expenditures (\$)	546	945	596	776
Heating Oil (Northeast)				
Consumption (gals)	644	731	584	751
Avg. Price (\$/gal)	1.16	1.37	1.10	1.37
Expenditures (\$)	751	999	643	1029
Propane (Midwest)				
Consumption (gals)	807	979	803	910
Avg. Price (\$/gal)	1.02	1.38	1.11	1.22
Expenditures (\$)	824	1349	888	1112

Notes: Consumption based on typical per household use for regions noted.
 Prices shown are national average delivered-to-household prices.

Figure WF1. U.S. Winter Natural Gas Demand
 (Year-to-Year Percent Change)

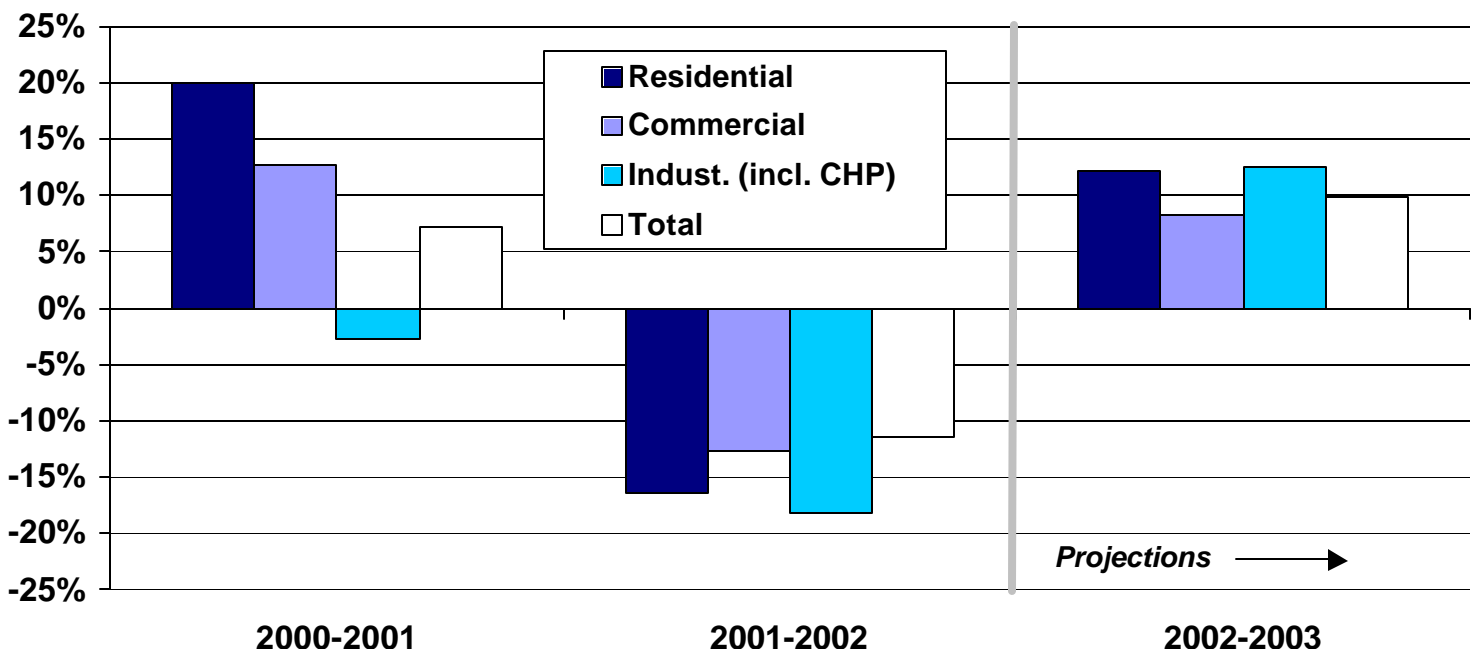


Figure WF3. Natural Gas Spot Wellhead Prices: Base Case and 95% Confidence Intervals

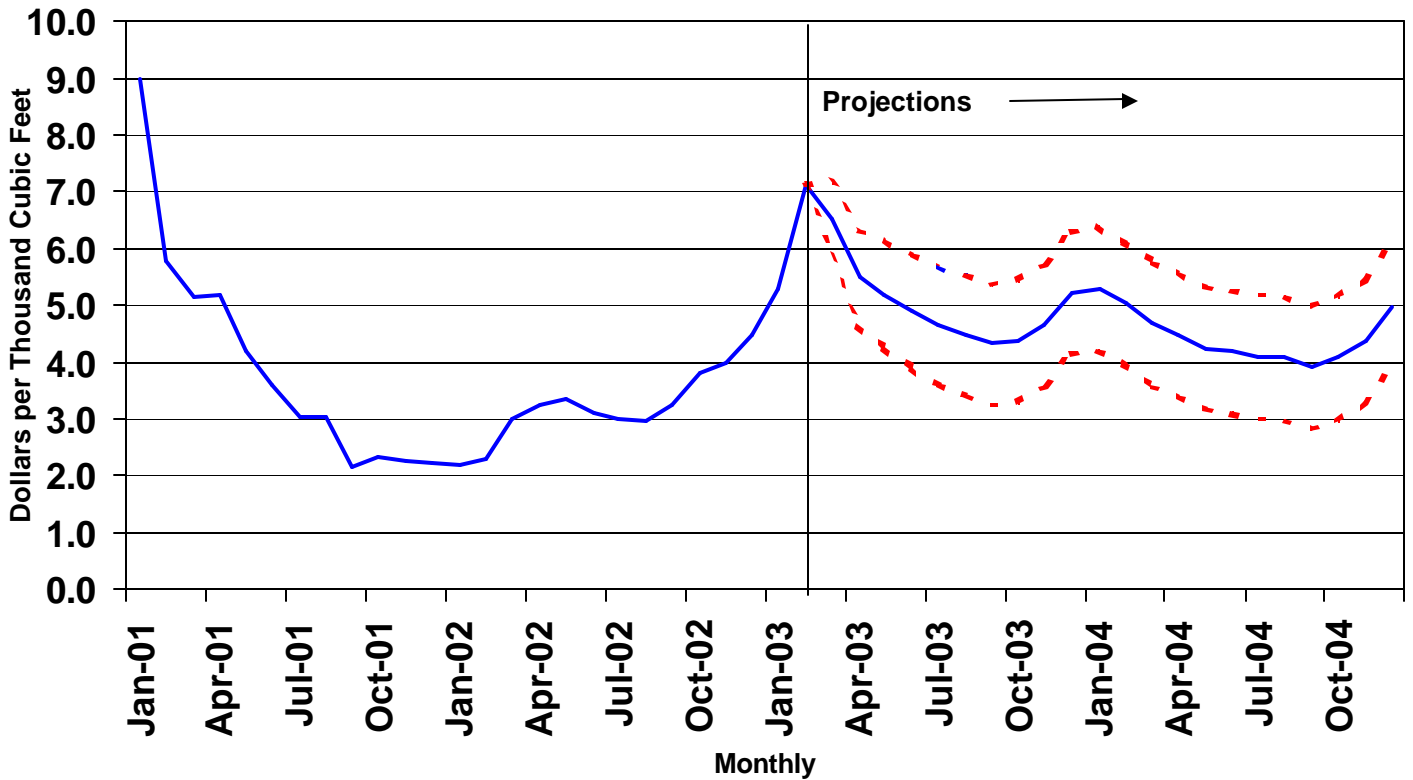
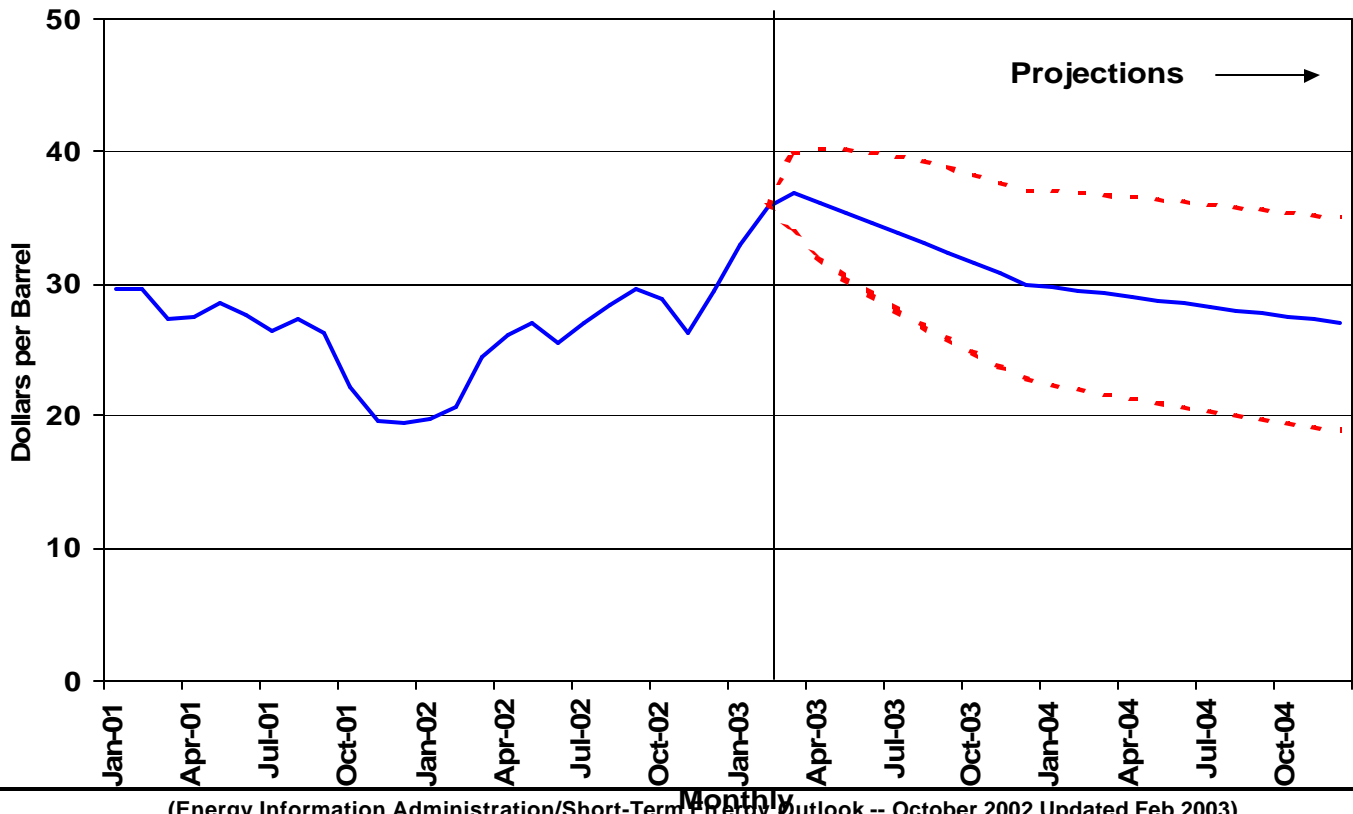


Figure WF5. WTI Crude Oil Price: Base Case and 95% Confidence Interval



(Energy Information Administration/Short-Term Energy Outlook -- October 2002 Updated Feb 2003)

Table WF3. 2002-2003 Winter Weather Scenarios: Warm, Normal (Base) and Cold Cases**(Illustrative Household Heating Demand and Costs)**

	Warm	Base	Cold	% Diff. From Base Warm	Base Cold
Natural Gas (Midwest)					
Consumption (mcf)	82.9	92.1	101.3	-10.0%	10.0%
Avg. Price (\$/mcf)	8.33	8.43	8.53	-1.2%	1.2%
Expenditures (\$)	690	776	864	-11.1%	11.3%
Heating Oil (Northeast)					
Consumption (gals)	676	751	826	-10.0%	10.0%
Avg. Price (\$/gal)	1.29	1.37	1.45	-5.6%	5.6%
Expenditures (\$)	874	1029	1195	-15.0%	16.2%
Propane (Midwest)					
Consumption (gals)	819	910	1001	-10.0%	10.0%
Avg. Price (\$/gal)	1.18	1.22	1.26	-3.6%	3.2%
Expenditures (\$)	965	1112	1262	-13.2%	13.5%

Note: Scenarios involve assumptions of 10% greater and 10% lower heating degree-days in all regions.