

ENERGY INFORMATION ADMINISTRATION

QUARTERLY PROJECTIONS

SHORT-TERM  
ENERGY  
OUTLOOK

QUARTER

3

1993

DOE/EIA-0202(93/3Q)

This publication and other Energy Information Administration (EIA) publications may be purchased from the Superintendent of Documents, U.S. Government Printing Office.

**All telephone orders should be directed to:**

U.S. Government Printing Office  
McPherson Square Bookstore  
1510 H Street, N.W.  
Washington, DC 20005  
(202)653-2050  
FAX (202)376-5055  
9 a.m. to 4:30 p.m., eastern time, M-F

Superintendent of Documents  
U.S. Government Printing Office  
Washington, DC 20402  
(202)783-3238  
FAX (202)512-2233  
8 a.m. to 4:30 p.m., eastern time, M-F

**All mail orders should be directed to:**

U.S. Government Printing Office  
P.O. Box 371954  
Pittsburgh, PA 15250-7954

Complimentary subscriptions and single issues are available to certain groups of subscribers, such as public and academic libraries, Federal, State, local and foreign governments, EIA survey respondents, and the media. For further information and for answers to questions on energy statistics, please contact EIA's National Energy Information Center. Address, telephone numbers, and hours are as follows:

National Energy Information Center, EI-231  
Energy Information Administration  
Forrestal Building, Room 1F-048  
Washington, DC 20585  
(202)586-8800  
TTY: For people who are deaf or hard  
of hearing: (202)586-1181  
9 a.m. to 5 p.m., eastern time, M-F



This report was prepared by the Energy Information Administration, the independent statistical and analytical agency within the Department of Energy. The information contained herein should not be construed as advocating or reflecting any policy position of the Department of Energy or any other organization.

**Energy Information Administration**  
Office of Energy Markets and End Use  
U.S. Department of Energy  
Washington, DC 20585

# Short-Term Energy Outlook

## Quarterly Projections

### Third Quarter 1993

DOE/EIA-0202(93/3Q)  
Distribution Category UC-950

# Contacts

The *Short-Term Energy Outlook* is prepared by the Energy Information Administration (EIA), Office of Energy Markets and End Use (EMEU). General questions concerning the content of the report may be referred to W. Calvin Kilgore (202-586-1617), Director of EMEU; Arthur Andersen (202-586-1441), Director of Energy Markets and Contingency Information Division; or Derriel Cato (202-586-6574), Chief of the Short-Term Forecasting and Contingency Branch.

Detailed questions may be addressed to David Costello (202-586-1468) or the following analysts:

Natural Gas In Transition .....	Evelyn Amerchih (202-586-8760)
Will the World Need Iraqi Oil Anytime Soon? .....	Douglas MacIntyre (202-586-1831)
Strategies for Compliance with Phase I of the Clean Air Act Amendments of 1990 .....	Arthur Fuldner(202-254-5321)
World Oil Prices/International Petroleum .....	Michael Grillot (202-586-6577)
Macroeconomic .....	Kay A. Smith (202-586-1455)
Energy Product Prices .....	Neil Gamson (202-586-2418)
Petroleum Demands .....	Michael Morris (202-586-1199)
Petroleum Supply/Integration .....	Elias Johnson (202-586-7277)
	Tancred Lidderdale (202-586-7321)
Natural Gas .....	Evelyn Amerchih (202-586-8760)
Coal .....	Elias Johnson (202-586-7277)
Electricity .....	Evelyn Amerchih (202-586-8760)

Domestic crude oil production figures are provided by the EIA Dallas Field Office, under the supervision of John H. Wood. Nuclear electricity generation is provided by Kenneth Wade (202-254-5514); hydroelectric generation, electricity imports, and utility electricity purchases from nonutilities are provided by Robin Reichenbach (202-254-5353); and coal production, imports, and exports are provided by Byung Doo Hong (202-254-5365)—all of the EIA Office of, Coal, Nuclear, Electric and Alternate Fuels.

Energy Information Administration  
Office of Energy Markets and End Use  
U.S. Department of Energy  
Washington, DC 20585

## Preface

The Energy Information Administration (EIA) prepares quarterly, short-term energy supply, demand, and price projections for publication in February, May, August, and November in the *Short-Term Energy Outlook (Outlook)*. An annual supplement analyzes the performance of previous forecasts, compares recent cases with those of other forecasting services, and discusses current topics related to the short-term energy markets. (See *Short-Term Energy Outlook Annual Supplement*, DOE/EIA-0202.)

The forecast period for this issue of the *Outlook* extends from the third quarter of 1993 through the fourth quarter of 1994. Values for the second quarter of 1993, however, are preliminary EIA estimates (for example, some monthly values for petroleum supply and disposition are derived in part from weekly data reported in the *Weekly Petroleum Status Report*) or are calculated from model simulations using the latest exogenous information available (for example, electricity sales and generation are simulated using actual weather data). The historical energy data are EIA data published in the *Monthly Energy Review*, *Petroleum Supply Monthly*, and other EIA publications. Minor discrepancies between the data in these publications and the historical data in this *Outlook* are due to independent rounding.

The cases are produced using the Short-Term Integrated Forecasting System (STIFS). The STIFS model is driven principally by three sets of assumptions or inputs: estimates of key macroeconomic variables, world oil price assumptions, and assumptions about the severity of weather. Macroeconomic estimates are produced by DRI/McGraw-Hill but are adjusted by EIA to reflect EIA assumptions about the world price of crude oil, energy product prices, and other assumptions which may affect the macroeconomic outlook. The EIA model is available on computer tape from the National Technical Information Service.

### Treatment of Petroleum Supply Monthly Reporting Change

The Energy Information Administration began reporting the series "Motor Gasoline Product Supplied" (equated in this report with gasoline demand) on a new basis for monthly data for January 1993 forward. These new-basis data are included in this issue of the *Outlook*. The reporting changes reflect data relating to fuel ethanol blended into gasoline as well as certain changes in product classification affecting reported motor gasoline quantities. As a result of these changes, any comparison of 1993 or 1994 motor gasoline demand and forecasts to historical data must recognize the adjustments made in 1993. This *Outlook* reports all 1992 volumes reflecting original unadjusted data. All reported volume changes or percentage differences between 1992 and 1993 or 1994 use adjusted 1992 data so that the data are on a consistent basis for reporting changes. A summary of the changes is provided in Appendix B.



# Contents

1	Highlights .....
3	Feature Articles .....
3	Natural Gas In Transition .....
6	Will the World Need Iraqi Oil Anytime Soon? .....
8	Strategies for Compliance with Phase I of the Clean Air Act Amendments of 1990 .....
9	Introduction .....
9	World Oil Prices .....
9	Macroeconomic Activity and Weather .....
11	Special Assumptions for Environmental, Tax and Other Energy-Related Policies .....
13	Outlook for Petroleum .....
13	Demand .....
14	Supply .....
15	World Oil Prices .....
17	U.S. Petroleum Product Prices .....
18	U.S. Petroleum Demand .....
18	Motor Gasoline .....
18	Jet Fuel .....
19	Distillate Fuel Oil .....
19	Residual Fuel Oil .....
20	Other Petroleum Products .....
20	Petroleum Demand and Production Sensitivities .....
21	Outlook for Other Major Energy Sources .....
21	Natural Gas .....
23	Coal .....
23	Electricity .....
25	Appendices
25	A. Computation of Petroleum Demand Sensitivities .....
27	B. Data Series Adjustments .....

## Tables

1.	U.S. Energy Supply and Demand Summary .....	2
2.	U.S. Macroeconomic and Weather Assumptions .....	28
3.	U.S. Energy Indicators: Mid World Oil Price Case .....	29
4.	International Petroleum Supply and Demand: Mid World Oil Price Case .....	30
5.	Energy Prices .....	31
6.	U.S. Petroleum Supply and Demand: Low World Oil Price Case .....	32
7.	U.S. Petroleum Supply and Demand: Mid World Oil Price Case .....	33
8.	U.S. Petroleum Supply and Demand: High World Oil Price Case .....	34
9.	U.S. Petroleum Demand Sensitivities .....	35
10.	Forecast Components for U.S. Crude Oil Production .....	35
11.	U.S. Natural Gas Supply and Demand: Mid World Oil Price Case .....	36
12.	U.S. Coal Supply and Demand: Mid World Oil Price Case .....	37
13.	U.S. Electricity Supply and Demand: Mid World Oil Price Case .....	38

## Figures

1.	U.S. Monthly Crude Oil Prices .....	9
2.	Projected Annual Change in U.S. Petroleum Demand by Fuel .....	14
3.	World Excess Oil Production Capacity .....	16
4.	Days Supply of Market Economies Commercial Petroleum Stocks, by Quarter .....	16
5.	Gasoline Market Trends Indexed to 1988 .....	18
6.	Annual Change in U.S. Jet Fuel Market Indicators .....	19
7.	Natural Gas Demand by Sector .....	21
8.	Natural Gas Wellhead Prices .....	22
9.	Annual Change in U.S. Electricity Demand by Sector .....	24
10.	Electricity Indicators .....	24



# Highlights

World oil prices are expected to average close to 1992 levels in 1993, as excess world production capacity climbs by over 1.5 million barrels per day this year. World oil stocks, in terms of days of forward supply from usable commercial inventories, are expected to be above 1992 levels at the end of June, indicating little support for near-term price recovery. Under mid-price assumptions, the average price of oil imported into the United States is expected to stay at about \$18 per barrel through the third quarter of 1993, rising to \$19 in the fourth quarter.

The U.S. economy is expected to grow by 2.7 percent in 1993 and by 3.5 percent in 1994. This growth would push overall energy consumption to new record levels. Petroleum demand would reach 17.5 million barrels per day in 1993 and 17.9 in 1994. Total net imports of petroleum would climb nearly 13 percent in 1993 to 7.8 million barrels per day.

Gasoline demand growth of about 1 percent per year is expected for 1993 to 1994. Based on experience from last winter, supplies should be in excellent shape to meet oxygenated gasoline demand this winter, even though oxygenate stocks are currently below last year's levels at this time. New low-sulfur diesel regulations will begin complicating the supply picture beginning this October and this is expected to add about 4 cents per gallon to diesel fuel costs.

Domestic crude oil production is expected to continue its long-term decline, dropping by 4.2 percent in 1993, or about 300,000 barrels per day, and by 2.9 percent in 1994, or about 200,000 barrels per day. In 1993, U.S. crude oil production is expected to slip below 7 million barrels per day, only 4 years after production passed under the 8-million-barrels-per-day mark.

Despite the nearly 50 percent decline in drilling since 1985, natural gas production has remained relatively steady due to technological advances in exploration and drilling. However, low drilling activity in the face of rising demand has narrowed the gap between production and production capacity particularly since 1991, leading to increasing reliance on working gas storage and Canadian imports. Net imports of gas are expected to rise by 14 percent in 1993 and 12 percent in 1994, to 2.1 and 2.4 trillion cubic feet, respectively. Working gas storage levels have risen rapidly since their low end of March levels, underpinning unseasonably high spot and futures prices. Stocks are expected to be back close to 1991 levels in 1993 and 1994.

Total demand for electricity is expected to increase by 2.9 percent in both 1993 and 1994. The effect of normal weather in 1993 is expected to support growth in total demand. The colder winter and spring this year relative to 1992 gives an added boost to residential electricity growth in 1993. Industrial electricity demand is expected to be boosted by improved growth in manufacturing production in both forecast years.

**Excess Capacity and Inventories Climb, Leaving World Oil Prices Low**

**U.S. Economic Growth Pushes Oil Demand and Imports Up**

**Second Oxygenated Gasoline Season, Low-Sulfur Diesel Regulations Lie Ahead**

**U.S. Crude Oil Production Slips Below 7.0 Million Barrels per Day in 1993**

**Reliance on Working Gas Storage and Canadian Imports Increase for Peak Gas Demand**

**Electricity Demand Grows in All Consuming Sectors**

Note: The data referenced may be found in Table 1 or in the tables located in the back of this report.

Natural gas use rose by more than 3.5 trillion cubic feet between 1986 and 1992, an average annual growth rate of 3.6 percent per year. The largest component of demand growth (approximately 2.1 trillion cubic feet) occurred in the industrial sector.<sup>4</sup>

### Sources of Supply

US domestic gas production has been maintained at 17.7 to 17.8 trillion cubic feet per year for the past 3 years. However, as consumption expands, it is evident that producers are less able to accommodate rising peak period demand.<sup>5</sup> In the future, withdrawals from working gas storage and Canadian natural gas imports are expected to play an increasing supply role by offsetting the widening gap between production and consumption during winter months.

Reliance on imports has been rising since 1988, when net imports went over the 1-trillion-cubic-foot-per-year mark.<sup>6</sup> Net Canadian gas imports in 1993 and 1994 are projected to increase by 14 and 12 percent, respectively (Table 11). The rise in Canadian imports has been made possible by the rapid growth in gas pipeline capacity, and more capacity is planned as the market continues to expand.

Withdrawal from working gas storage during the peak demand months, December through March, is an important element in meeting peak demand. Colder than expected weather in March 1993 reduced working gas storage to unusually low levels (Figure 2). This was due to strong withdrawals in the wake of the blizzard of March 12-13, and the cold weather that lingered for the remainder of the month. Storage levels on April 1 were 25 percent below year-earlier levels.<sup>7</sup> Demand for summer storage refill underpinned unseasonably high spot and futures gas prices this spring.

As of June 1 the amount of working gas storage—measured as a percentage of working gas capacity—is estimated at 33 percent full, compared with 34 percent one full year ago.<sup>8</sup> With winter peak demand expected to reach as high as 76 billion cubic feet per day, the

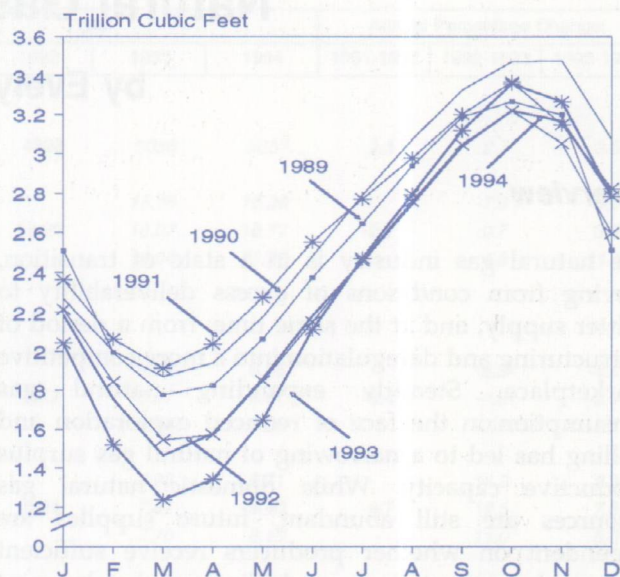


Figure 2. Natural Gas Working Storage, 1989-1994

Sources: History: various issues *Natural Gas Monthly*; Forecast: 3rd quarter Short-Term Integrated Forecasting System database.

industry needs 3.3 trillion cubic feet of working gas storage by November 1 to balance winter supply and demand.<sup>9</sup> This can be achieved if the current rate of refill is sustained through October.

### Meeting Peak Month Demand

In 1993-1994, average U.S. natural gas consumption during the peak months December 1993 through March 1994 is projected to be 67 to 76 billion cubic feet per day. However, average U.S. production during the peak months December 1993 through March 1994 is projected to be 49 to 53 billion cubic feet per day. Thus, an 18 to 23 billion cubic feet per day gap between production and consumption must be filled by imports and withdrawals from storage.

<sup>4</sup>Energy Information Administration, *Natural Gas Monthly*, various issues.

<sup>5</sup>Energy Information Administration, *Natural Gas 1992: Issues and Trends*, DOE/EIA-0560(92).

<sup>6</sup>Energy Information Administration, *Historical Monthly Energy Review, 1973-1988*, DOE/EIA-0035(73-88).

<sup>7</sup>Energy Information Administration estimates, and *Natural Gas Week*, May 19, 1993.

<sup>8</sup>*Natural Gas Week*, June 21, 1993.

<sup>9</sup>*Oil and Gas Journal*, April 26, 1993, p. 23.

Peak month import levels (December 1993 through March 1994) are projected at 5.6 to 6.9 billion cubic feet per day (Figure 3). Import pipeline capacity has grown from 4.8 billion cubic feet per day in 1983 to 9.3 billion cubic feet per day expected by November 1993. By November 1994, capacity is expected to increase to 10.2 billion cubic feet per day.<sup>10</sup> Canada has sufficient gas resources to substantially increase exports to the United States.

Net withdrawals from working gas storage in the peak months would therefore have to average 12 to 16 billion cubic feet per day. These levels are on a par with actual net withdrawals experienced during this past winter, and would not be expected to overburden the system. The highest storage withdrawal level on record occurred in December 1989, due to extremely cold weather, when net withdrawals averaged 24.8 billion cubic feet per day for the month.<sup>11</sup>

Natural gas supplies available from domestic production, imports and storage should be adequate to fill the Nation's needs during the 1993-94 winter peak months, based on the economic, weather and price assumptions underlying this forecast.

### Selected U.S. Natural Gas Supply and Demand Variables: Mid World Oil Price Case (Billion Cubic Feet per Day)

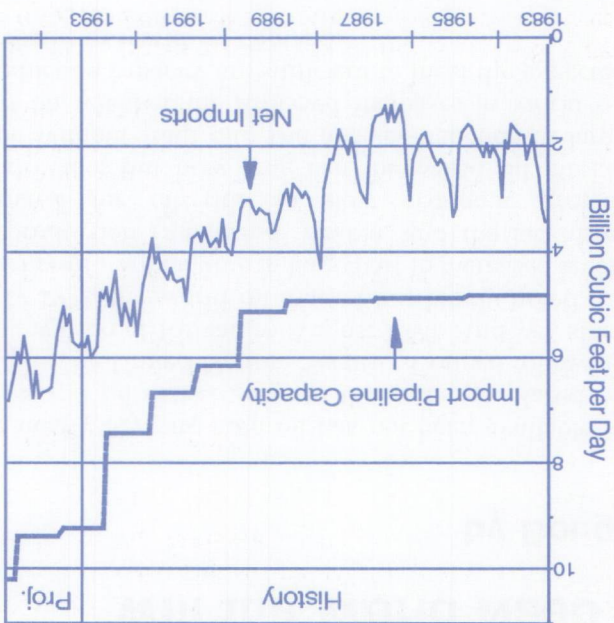
	1986	1988	1990	1991	1992	1993	1994
<b>Supply</b>							
Total Dry Gas Production <sup>a</sup> .....	44.00	46.73	48.79	48.63	48.57	50.44	51.45
Net Imports .....	1.89	3.33	3.96	4.50	5.04	5.72	6.45
<b>Demand</b>							
Industrial .....	15.28	17.44	19.23	19.81	20.93	21.18	22.63
Total .....	44.44	49.26	51.28	52.41	53.96	55.79	57.81

<sup>a</sup>Excludes nonhydrocarbon gases removed.

<sup>10</sup>Energy Information Administration, Office of Oil and Gas, Natural Gas Division.  
<sup>11</sup>Energy Information Administration, Natural Gas Monthly, December 1991.

Table 11. Pipeline capacity - History 1980-89; National Energy Board and Energy, Mines and Resources, Canada; History and Forecast 1990-94; Energy Information Administration, Office of Oil and Gas, Reserves and Natural Gas Division.

Figure 3. Canadian Import Pipeline Capacity vs. Imports, 1983-1994



# Will the World Need Iraqi Oil Anytime Soon?

by Douglas MacIntyre

For nearly 3 years, Iraqi oil has not been available to the world oil market, due to the embargo placed on Iraq by the United Nations Security Council following the invasion of Kuwait in August 1990. And yet, since early 1991, the world oil market has barely noted the absence of Iraqi oil, due in large part to increased levels of production from Saudi Arabia, and the lackluster demand for oil due to slow economic growth worldwide. But how long can the world oil market cope without Iraqi oil? The answer depends in large part on whether the expected increases in world oil production capacity are sufficient to meet the expected increases in world oil demand.

This analysis assumes that world oil demand will increase by 1.4 million barrels per day from 1993 to 1994 (Table 4), and by an annual rate of 1 to 2 million barrels per day from 1994 to 1996.<sup>1</sup> World oil consumption has not increased by as much as 2 million barrels per day since the late 1970's, while an increase of 1 million barrels per day is approximately equal to the increase in world oil consumption expected from 1993 to 1994. Another assumption made is that non-OPEC oil production will remain relatively stable throughout the next few years. Supply increases from areas such as Brazil, Colombia, Yemen, and the North Sea region should roughly counterbalance declines in oil supplies from the United States and the former Soviet Union.

Given these assumptions, implied demand for OPEC production rises approximately 1 million barrels per day in 1994, 1995, and 1996. In 1996, the estimated demand for OPEC oil could exceed 29 to 30 million barrels per day, a level not seen since 1978-1979. In 1978-1979, Iraqi production of 2.5 to 3.5 million barrels per day was available to help meet this demand. Can the estimated demand for OPEC oil in 1996 be met without Iraqi oil? The answer appears to be yes.

OPEC production capacity (excluding Iraq) is expected to increase by 1.3 million barrels per day from 1993 to

1994, followed by an additional increase of 0.6 to 1.5 million barrels per day from 1994 to 1995, and by only 0 to 0.4 million barrels per day from 1995 to 1996 (see enclosed table). Ranges for capacity increases are used from 1994 to 1996 because of uncertainty regarding constraints on OPEC capacity expansion plans. The lower range of these estimates reflects the possibility that expansion plans may be scaled back because of capital constraints, while the higher range reflects planned capacity increases if no significant constraints are encountered. A large part of the increases in OPEC capacity are expected to occur in Kuwait and Saudi Arabia. Other OPEC countries (i.e., Iran, Venezuela, Libya, and the United Arab Emirates) may also increase their production capacity to a lesser extent over the next few years.

Between 1993 and 1996, Saudi Arabia is expected to increase its oil production capacity by a cumulative total of 0.5 to 0.8 million barrels per day. This expansion is expected to come mainly from existing fields as well as new fields which are expected to commence production during the next few years.

The following table summarizes the estimated cumulative increases in OPEC (excluding Iraq) oil production capacity, along with the estimated cumulative increase in world oil demand between 1993 and 1996 (in million barrels per day):

	1994	1995	1996
OPEC Capacity . . . . .	31.1	31.7 - 32.6	31.7 - 33.0
World Oil Demand . . . . .	68.7	69.7 - 70.7	70.7 - 72.7
<b>Cumulative Increases from 1993</b>			
OPEC Capacity . . . . .	1.3	1.9 - 2.8	1.9 - 3.2
World Oil Demand . . . . .	1.4	2.4 - 3.4	3.4 - 5.4

Source: Energy Information Administration, internal estimates.

<sup>1</sup>This range is consistent with the demand projections from the Energy Information Administration, *International Energy Outlook 1993*, DOE/EIA/0484(93). A demand increase of greater than 2 million barrels per day would not be very likely considering that world oil demand has not increased by as much as 2 million barrels per day at an annual rate since the late 1970's.

OPEC capacity increases outside of Iraq will be sufficient to supply the world oil demand increases expected through 1994. In fact, there probably will not be economic pressures placed on the market through most of 1995, since any shortfall in OPEC capacity increases in 1995 could easily be compensated with some of the approximately 2 million barrels per day of OPEC capacity increases already available. However, by 1996 (or possibly towards the end of 1995) expected OPEC capacity increases may not be enough to supply the world at the demand growth assumed above. Nonetheless, it is clear that Iraqi oil will not be needed until at least 1996, unless world oil demand increases at a rate not seen since the late 1970's.

OPEC capacity increases outside of Iraq will be sufficient to supply the world oil demand increases expected through 1994. In fact, there probably will not be economic pressures placed on the market through most of 1995, since any shortfall in OPEC capacity increases in 1995 could easily be compensated with some of the approximately 2 million barrels per day of OPEC capacity increases already available. However, by 1996 (or possibly towards the end of 1995) expected OPEC capacity increases may not be enough to supply the world at the demand growth assumed above. Nonetheless, it is clear that Iraqi oil will not be needed until at least 1996, unless world oil demand increases at a rate not seen since the late 1970's.

from 1992 fourth quarter's growth of 4.6 percent.<sup>3</sup> Most of the first quarter's decline in GDP was due to a sharp decrease in defense purchases and an increase in imports. The unusual weather in the first quarter affected the composition of GDP growth—delaying consumer purchases and residential construction. As a result, the economy will grow at higher rates during the latter part of 1993. The two main sources of economic growth over the forecast period will be investment—primarily investment in producer's durable equipment and residential construction—and the recovery in consumption. Investment responded positively to the lower interest rates in 1991 and 1992, and interest rates and inflation are expected to remain relatively flat until the end of 1994.

Non-farm employment gradually accelerates during the economic recovery—growing 1.5 percent in 1993 and 2.4 percent in 1994. Recovery in employment is expected as the number of hours worked in manufacturing are near record levels. In order to satisfy increased demand for output, employers should increase employment.

Trade will not be a near-term source of growth. Exports will remain sluggish as key export markets are softening: Europe's growth will remain weak and Mexico's growth is starting to slow. However, the trade balance will improve slightly in 1994, primarily because of slower import growth as opposed to an increase in exports.

<sup>3</sup>Macroeconomic forecast based on DRI June 1993 Control, adjusted for STEO world oil prices.

## Special Assumptions for Environmental, Tax and Other Energy-Related Policies

This section summarizes the potential impacts of current legislative actions on the short-term energy forecasts for the United States and shows how these impacts are incorporated in this *Outlook*. This legislation encompasses the Clean Air Act and Energy Policy Act. The impacts are anticipated to directly affect energy prices, consumption, or production.

Commencement Date	Description	Impact on Forecast
November 1992	Oxygenated gasoline required to be sold in carbon monoxide nonattainment areas during November through February of each year.	Motor gasoline prices expected to be 3 to 5 cents per gallon higher in the nonattainment areas, compared to other regions, raising national prices by an average of 1 to 2 cents per gallon from November through February. <sup>1</sup>
December 1992	Expiration of Section 29 tax credits for coalbed methane and tight sands formations drilling.	Natural gas drilling declines in 1993 due to a last minute drilling increase in 1992 before expiration of Section 29 credit. <sup>2</sup>
January 1993	Alternative Minimum Tax exemption for independent oil and natural gas producers.	Possible increase of 50,000 barrels per day in U.S. oil production. <sup>3</sup>
May 1993	Stage II Gasoline Vapor Recovery System implemented.	0.2 cents per gallon in nonattainment areas. <sup>4</sup>
Autumn 1993	FERC Order 636-A issued.	Average storage levels, reliance on storage levels for peak demand likely to rise, but pricing expected to be more competitive.
October 1993	Removal of sulfur from diesel fuel for on-highway use.	Diesel fuel prices expected to rise by 3 to 4 cents per gallon from the last quarter of 1993 through the fourth quarter of 1994. <sup>5</sup>
January 1994	Reduced tailpipe emissions of hydrocarbons, carbon monoxide, and nitrogen oxides.	Estimates not yet available.
January 1995	Phase I reformulated gasoline in 9 smoggiest cities (plus opt-in areas).	Approximately 4 to 6 cents per gallon higher cost in affected cities. <sup>6</sup>
January 1995	Phase I reduction in sulfur dioxide emissions from electric utility steam generation units fired by fossil fuels by a system of tradable allowances.	Coal prices will be about 1 to 2 cents per million Btu higher in the latter part of 1994. <sup>7</sup>

<sup>1</sup>Energy Information Administration, *Monthly Energy Review*, DOE/EIA-0035(92/08), "Demand, Supply, and Price Outlook for Oxygenated Gasoline, Winter 1992-1993" (Washington, DC, August 1992), pp. 5 and 9.

<sup>2</sup>Oil production impacts are estimates from the Energy Information Administration, Office of Oil and Gas, Reserves and Natural Gas Division.

<sup>3</sup>Environmental Protection Agency, *Technical Guidance: Stage II Vapor Recovery Systems for Control of Vehicle Refueling Emissions at Gasoline Dispensing Facilities*, EPA-450/391-022A, November 1991.

<sup>4</sup>Energy Information Administration, Office of Energy Markets and End Use, Energy Markets and Contingency Information Division.

<sup>5</sup>Preliminary estimates compiled by EIA's Office of Energy Markets and End-Use.

<sup>6</sup>Based on internal EIA calculations. It was estimated that compliance with Phase I of the Clean Air Act requiring low-sulfur coal will cost about \$5.00 per ton of coal or about a 17-percent price increase for the approximately 2.5 percent of coal burned at electric utilities that will be affected by Phase I. In order to meet the January 1, 1995 date of compliance, those utilities will be stockpiling coal by the second half of 1994.





# Outlook for Petroleum

## Demand

Demand for petroleum, as discussed in this report, is synonymous with "petroleum product supplied," which is defined as the sum of petroleum product production (including refinery gain), imports minus exports, and changes in primary stocks.

U.S. petroleum demand is expected to increase by about 2.5 percent per year, or 430,000 barrels per day, through 1994 in the mid-price case (Tables 1 and 7, and B1 in Appendix B). Weather and economic uncertainties could limit the rate of growth considerably, but barring a faltering economy or another very mild weather pattern for the next 6 quarters, domestic demand is clearly up through 1994.

Despite relatively slow growth in the U.S. economy and generally very mild weather conditions in 1992, domestic petroleum demand grew by 350,000 barrels per day.<sup>4</sup> The U.S. economy has continued to recover in recent quarters and is expected to grow by 2.7 percent or more in 1993 and 3.4 in 1994 (Table 2).

Although the oil intensity of the U.S. economy is generally declining, even this moderate economic growth path will push petroleum demand back toward the high levels of the late 1970's. By 1994 demand is expected reach 17.9 million barrels per day (a 15-year high) under base case assumptions.

Transportation fuels are expected to make a significant contribution to petroleum growth over the next 2 years, as diesel fuel demand picks up in response to increased highway freight traffic (and the overall expansion of commercial and industrial activity), and as personal travel activity increases slightly relative to improvements in average automobile fleet efficiency (Figure 2). Despite the financial woes of the airline industry, jet fuel is expected to contribute modestly to overall petroleum demand growth in the short term.

Heavy oil markets continue to decline in 1993 but are expected to stage a minor comeback by 1994 as natural gas markets tighten and prices increase relative to oil (Tables 5 and 7). Other petroleum products, including liquefied petroleum gases (LPG), petrochemical feedstocks, and miscellaneous fuels, feedstocks, materials, and specialty products grew substantially in

Based on supply and demand patterns that reflect the mid-price case, world demand for petroleum products is expected to increase by almost 400,000 barrels per day in 1993, to 67.3 million barrels per day. This is expected to be followed by a much larger increase of 1.4 million barrels per day in 1994 (Table 4). Demand growth in 1993 will be held down by a continued sharp drop in demand by the Republics of the former Soviet Union, as well as by declines in both the OECD (Western) Europe and non-OECD (Eastern) Europe regions. Stronger growth in 1994 will depend on a slower decline in demand by the Republics of the former Soviet Union, as well as an increase in demand growth in both regions of Europe.

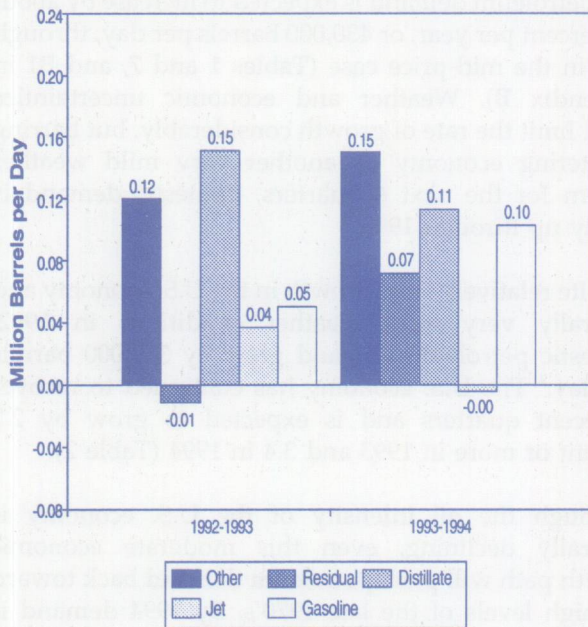
In 1993, OECD demand for petroleum is expected to average 39.0 million barrels per day, up by about 400,000 barrels per day from the 1992 level. This estimate is based on the assumption that OECD economic growth will be 1.4 percent in 1993 (Table 2). In 1994, OECD demand is expected to increase by 800,000 barrels per day, if OECD economic growth accelerates to 2.6 percent as expected.

Demand in non-OECD regions, other than the former Soviet Union and Eastern Europe, is expected to increase by about 1.06 million barrels per day in 1993 and by 1.15 million barrels per day in 1994, with the largest increases occurring in Asia, China, and the Middle East. Petroleum demand (in million barrels per day) for other non-OECD regions is as follows:

Region	1992	1993	1994
China	2.63	2.82	3.01
Latin America	5.35	5.48	5.62
Asia	6.34	6.81	7.36
Middle East	3.69	3.87	4.02
Africa	2.26	2.36	2.46
Total	20.27	21.33	22.48

<sup>4</sup>This growth is calculated based on old-basis numbers for motor gasoline and other products. See *Petroleum Supply Monthly*, DOE/EIA-0109(93/03), p. xvii, and Appendix B in this report for an explanation of data reports changes.

1992 (6.6 percent for the combined category) and are expected to continue to expand along with the economy in the near term (Table 7). One aspect of 1992 LPG growth that may not be repeated this fall was unusually high agricultural demand for propane last fall for crop drying. However, propane demand for heating and petrochemical uses should increase in 1993 and 1994. Petroleum materials for construction (such as asphalt) are expected to benefit as aggregate spending on structures leads domestic investment over the next couple of years, as a result of reduced interest rates.



**Figure 2. Projected Annual Change in U.S. Petroleum Demand by Fuel**

Note: Historical data (including preliminary estimates) through March 1993. These changes are on a consistent basis and cannot be derived from Table 7. Source: Table 7 and Table B1 (for "Gasoline" and "Other").

## Supply

World oil production is expected to decrease by over 70,000 barrels per day in 1993 to 66.9 million barrels per day (Table 4). Another large production decline in the former Soviet Union (1.06 million barrels per day) is projected. This is offset by a significant production increase in the Organization of Petroleum Exporting Countries (OPEC) and increases in other non-OECD regions. Oil supply from OECD countries is expected to decline by 150,000 barrels per day in 1993. Production

increases from the North Sea are insufficient to offset production declines in the United States.

World production is expected to increase by about 1.3 million barrels per day next year. An increase in oil production by OPEC accounts for most of this production gain in 1994. Non-OPEC production is expected to fall by only about 80,000 barrels per day, as a decline of 700,000 barrels per day in production from the former Soviet Union will more than offset increases in production from other non-OECD countries. Unlike 1993, however, a production increase from the North Sea will more than offset the production decline from the United States, resulting in an increase of over almost 170,000 barrels per day in OECD oil supply.

Domestic crude oil production is expected to decline by an annual average rate of 300,000 barrels per day in 1993 and by 200,000 barrels per day in 1994 under the mid-price case (Table 7). Barring any quick turnaround toward substantially increased efforts to develop domestic resources, the short- to mid-term outlook for production capacity is not optimistic. Under base case assumptions, the oil production outlook beyond 1994 is for continued annual declines of about 200,000 barrels per day through the year 2000.<sup>5</sup> Drilling activity approached a 50-year record low in March when the drilling rig count fell to near 600. Since then, rig counts have improved slightly.<sup>6</sup> Nonetheless, the average rig count for 1993 is expected to be about 3.9 percent below that of 1992. In 1994, the average rig count is expected to increase by only 4.5 percent over that of 1993. Some temporary attenuation of the production decline rate is expected in 1994 because of the expansion of gas-handling facilities in Alaska and new production from the Point McIntyre field.<sup>7</sup>

The potential sensitivities of domestic oil production to price variations are presented in Tables 6 and 8. Domestic crude oil production may range from 80,000 barrels per day below the mid-price case to 70,000 barrels per day above the mid-price case in 1993. In addition, it should be noted that, the lower but quite plausible case in which oil prices average below \$17 through 1994 (Table 5) yields a cumulative oil production decline of more than 710,000 barrels per day between 1992 and 1994 (Table 6), compared to the 500,000 barrels per day in the mid-price case (Table 7). Table 10 provides a disaggregation of the range of oil production expected for the fourth quarter of 1994 between the high and low price cases. The two main

<sup>5</sup>See Energy Information Administration, *Annual Energy Outlook, 1993*, DOE/EIA-0383(93), Table A8.

<sup>6</sup>Baker Hughes Rig Count, *Oil and Gas Journal*, weekly issues spring 1993.

<sup>7</sup>Computed by the Reserves and Natural Gas Division, Energy Information Administration.

## World Oil Prices

World oil prices are affected by supply, demand, and other factors such as expectations of market participants. Each of these factors is subject to substantial uncertainty. The uncertainties concerning oil supply, however, are centered on oil exports from the former Soviet Union and oil production from OPEC.

- In the former Soviet Union, the production and consumption of oil are expected to continue to decline. Export volumes are expected to be maintained to support the need for foreign currency.

- Two OPEC countries, Kuwait and Iraq, are in the process of restoring their pre-war production capacity and export facilities. Kuwait is expected to increase production and exports as capacity is restored, although production may be held below quotas. Iraq's production will be constrained as long as the United Nations embargo against exports remains in effect. Future OPEC production-sharing agreements will be made more difficult as production capacity from Kuwait increases and when Iraq is allowed to resume exports.
- Two other factors affect the extent to which these uncertainties could influence oil prices:

- *Excess production capacity.* Excess oil production capacity for the world is expected to increase by over 1.6 million barrels per day in 1993, and then decline by about 100,000 barrels per day in 1994 (Figure 3). These estimates exclude any excess capacity from Iraq because it is unavailable for utilization as long as the United Nations sanctions remain in force. Capacity restoration in Kuwait and capacity additions in Saudi Arabia and Iran are expected to more than offset increases in actual OPEC production in 1993. In 1994, the total OPEC capacity increase falls just short of the actual OPEC production increase.

factors affecting this range are price uncertainty and uncertainties relating to the timing of expected maintenance and development operations which affect underlying well productivity.

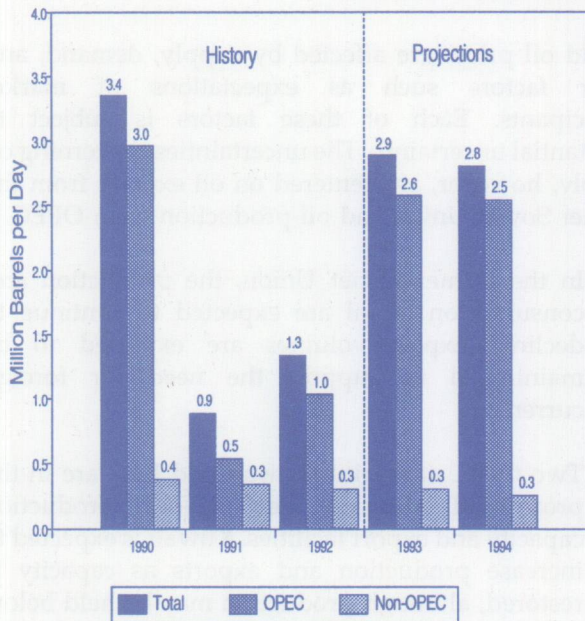
Declining oil production and rising demand in the United States spells a dramatic increase in imports. Under base case assumptions, net imports of petroleum will climb by over 21 percent between 1992 and 1994, to 8.4 million barrels per day. This is the highest average annual net import rate since 1977 and the second highest in history, both in absolute terms and as a percent of total petroleum demand (dependence ratio of 47 percent).

While import expenditures, as a percent of total demand, are now approaching record levels, net petroleum import expenditures, as a percent of total GDP, while increasing, still remain well below the historical maximum of 2.8 percent.<sup>8</sup>

Net imports of petroleum products declined from 960,000 barrels per day in 1991 to 944,000 barrels per day in 1992. This decline in petroleum product imports in 1992 resulted from an increase in domestic refinery capacity utilization and withdrawal of petroleum products from inventory. Refinery inputs of crude oil increased by 110,000 barrels per day in 1992 over 1991. Petroleum product inventories increased by an average 32,000 barrels per day in 1991 and were withdrawn at an average rate of 68,000 barrels per day in 1992. The increase in domestic refinery capacity utilization continued into 1993 with first quarter 1993 refinery inputs of crude oil 210,000 barrels per day higher than the first quarter 1992. Because of the high first quarter 1993 crude runs, petroleum product inventories were not drawn down as much in the first quarter as they had been in recent years. The forecast for 1993 has refinery crude oil inputs averaging 170,000 barrels per day higher than in 1992, petroleum product inventories building by an average 90,000 barrels per day, and petroleum product net imports increasing to an average 1,288,000 barrels per day. The increase in refinery crude oil inputs is more constrained in 1994 because of high refinery capacity utilization rates.<sup>9</sup>

<sup>8</sup>Based on calculations from the Short-Term Integrated Forecasting System database (for net petroleum imports quantities), the *Monthly Energy Review*, DOE/EIA-0035(93/03) Table 1.6 for historical benchmark merchandise trade value in petroleum; and the DRI/McGraw-Hill CONTROL0393 macroeconomic forecast for the petroleum import price index series used to translate forecasted net imports quantities into dollar values. The ratio is calculated as nominal net petroleum imports expenditures divided by nominal GDP.

<sup>9</sup>The current refinery operable distillation capacity of 15.1 million barrels per day is carried through the forecast period. A maximum sustained capacity utilization rate of 92.5 percent is allowed over the forecast period. The recent high refinery capacity utilization rates (96 percent during the week of June 18, 1993) indicates the possibility that crude oil imports may be higher and petroleum product imports lower over the forecast period if higher refining capacity utilization rates are sustainable.



**Figure 3. World Excess Oil Production Capacity**

Note: Excludes any excess capacity from Iraq in 1991-1994.

Source: Energy Information Administration, Office of Energy Markets and End Use, Energy Markets and Contingency Information Division.

- *Stocks.* At the end of the second quarter of 1993, the market economies are expected to have enough stocks readily available to meet petroleum demand for over 30 days (Figure 4), based on anticipated demand levels, about three days more than at the same time in 1992. This represents usable commercial stocks only, and excludes strategic government stocks of 880 million barrels and the minimum inventory levels that must be maintained for normal operations of about 3.1 billion barrels.<sup>10</sup>

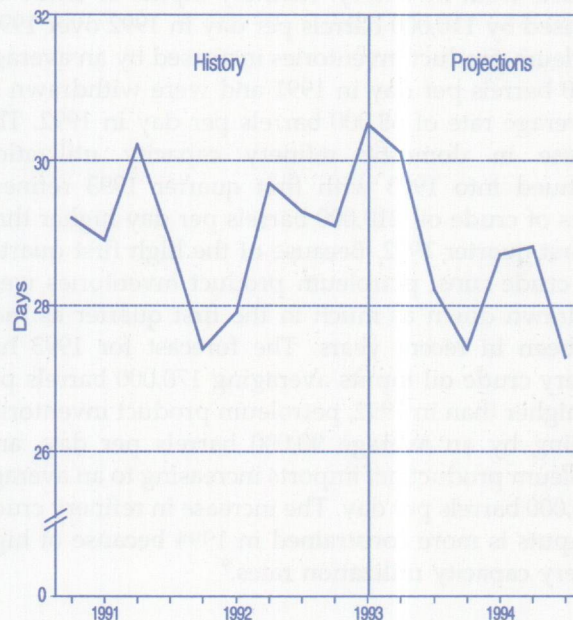
In 1993, the combination of a significantly higher level of world excess production capacity and a level of readily available stocks similar to or above that in 1992 is possible and could put downward pressure on world oil prices. In 1994, however, if readily available stocks, in terms of days of supply, are lower throughout the year and world excess production capacity drops below year-earlier levels in the second half of the year, then prices could begin to rise moderately.

The key uncertainties affecting oil demand over the forecast period are the magnitude of economic growth, especially in the United States, Japan, and Western

Europe, and the severity of winter weather. Economic recovery is not expected for the OECD countries as a whole until 1994. In the short term, variations in weather could have a greater effect on energy demand than variations in economic activity.

Because future price developments remain uncertain, three world oil price cases are developed (Figure 1 and Table 5) for analysis. The three world oil price cases are meant to represent the range over which prices could vary during the forecast period. In the low-price case, the world oil price is about \$16.80 per barrel in 1993 and \$16.30 per barrel in 1994. In the mid-price case, the price is about \$18.10 per barrel in 1993 and \$18.80 per barrel in 1994. In the high-price case, the world oil price increases to about \$19.10 per barrel in 1993 and to \$21.30 per barrel in 1994. The mid-price case is based on the following assumptions:

- Net oil exports from the former Soviet Union will decrease by less than 50,000 barrels per day in 1993, to 2.0 million barrels per day, and by about 150,000 barrels per day in 1994, as production declines continue to exceed reductions in oil consumption (Table 4).



**Figure 4. Days Supply of Market Economies Commercial Petroleum Stocks, by Quarter**

Note: Represents usable stocks; excludes strategic stocks and minimum operating inventory.

Source: Energy Information Administration, Office of Energy Markets and End Use, Energy Markets and Contingency Information Division.

<sup>10</sup>Based on assumptions from EIA's Office of Energy Markets and End Use.

quarter of 1994. Natural gas wellhead prices and electric utility prices fall in 1993, but rise in 1994 in this scenario. Residual fuel oil prices follow the crude oil price path, remaining relatively flat in annual terms. Coal prices are expected to continue a downward trend in 1993 which levels off in 1994. This occurs because increased mine productivity lowers overall costs of production.

The mid-price case assumes that in 1993 the average annual motor gasoline prices will increase by just 1 cent per gallon over the 1992 average annual price, due primarily to State and local tax increases. In 1994, higher crude oil prices, a lower days' supply (stocks divided by demand) of gasoline and additional State and local taxes should add 3 cents per gallon to the annual average price. Diesel fuel prices are expected to increase by 7 cents per gallon in 1994, due to higher crude oil prices, a lower days' supply, and the implementation of new low-sulfur content requirements.<sup>11</sup>

Assuming normal winter weather, residential heating oil prices are projected to rise 1 cent in 1993. The 1994 price increase of 3 cents per gallon, is based on higher world oil prices, a lower average days' supply of distillate fuel oil, and about a 1 cent per gallon increase in retail margins, due to general inflation.

In 1993, the average annual residual fuel oil price is expected to increase by 81 cents per barrel over the 1992 average price, even as the crude oil price is expected to decline slightly. This is because the residual fuel oil prices in the first half of 1993 (about 85 percent of the crude oil price) have recovered from their near historical lows of the first half of 1992 (73 percent of the price of crude oil). These low prices in 1992 were due to an excess supply of residual fuel resulting from a warm winter. In 1994, higher crude oil costs are expected to be passed on to the retail price of residual fuel oil. In addition, higher projected demand will add to upward price pressures for this fuel. These prices are projected to increase by 5.7 percent in 1994 compared to 3.9 percent for crude oil. Demand for residual fuel oil is expected to grow by 9.1 percent during this period with almost all of the increase occurring in the electric utility sector (Table 7). This is due to projected increases in total electricity generation, coupled with productive capacity constraints for natural gas. The result would be fuel switching in some regions, particularly on the East Coast, from natural gas

- Iraqi production will be limited to domestic requirements plus a small volume of exports to Iran, Jordan, and Turkey. This assumes that the United Nations embargo against Iraq continues and that Iraq and the United Nations do not agree to terms that would allow limited exports for humanitarian purposes.
- Other OPEC member countries will adjust their production, as necessary, to achieve the aggregate OPEC production rates projected. In particular, the OPEC oil supply for the third quarter of 1993 includes 24.9 million barrels per day of crude oil production.

The low-price case assumes that Iraq is allowed immediately to resume a significant volume of exports and that other OPEC members do not restrain their production to accommodate these exports. Another supply factor adding to the downward pressure on prices is higher exports from the former Soviet Union than in the mid-price case. World demand could be lower due to slower economic growth in the OECD countries and milder weather than assumed in the mid-price case.

The high-price case assumes that oil exports from the former Soviet Union are lower than in the mid-price case. Production from the OPEC countries is assumed to be restrained in order to push oil prices higher. In addition, abnormally cold winter weather and stronger economic growth than in mid-price case are assumed.

## U.S. Petroleum Product Prices

Domestic petroleum product price variations reflect primarily a pass-through of differences in crude oil costs (Table 5). Some price variation is attributable to differences in supply and demand conditions for particular product markets, as well as changes in excise tax regimes. In addition, projected price effects of changing environmental regulations are presented in accordance with the timing of their completion.

The low-price case assumes slightly lower rates of inflation and a more robust economy than does the high or mid-price cases. In this scenario, petroleum product prices generally follow the crude oil price path, first 3 quarters of 1994 and \$17 per barrel in the fourth

<sup>11</sup>Published estimates of the low of producing low-sulfur diesel range from 2 to 7 cents per gallon. Environmental Protection Agency, *Federal Register*, Vol. 54, No. 163, August 24, 1989, p. 35278. Cambridge Energy Research Associates, *The U.S. Refining Industry: Facing the Challenges of the 1990's*, (January 1992), Page 54.

to residual fuel oil in this sector and to a lesser extent, the industrial sector. The average prices of these two fuels consumed at electric utilities is projected to be nearly equal to each other for both 1993 and 1994.

The high-price case assumes a slightly higher rate of inflation a slightly weaker economy than does the mid-price case. In this scenario, prices for petroleum products, natural gas, and coal are projected to gain through 1994.

## U.S. Petroleum Demand

### Motor Gasoline

Motor gasoline demand is expected to exhibit growth of about 1.0 percent per year from 1992 to 1994 (Figure 5). Continued growth in highway travel averaging 2.5 percent over that period is expected to be the result of continued improvements in the economy (including steady growth in employment and income) and continued reductions in the real cost of fuel per mile driven. Average increases of 1.5 percent in fleet fuel efficiency for 1993 and 1994, while contributing to the lower per-mile costs of driving, primarily offset the upward effect on gasoline demand of the travel growth by reducing per-mile consumption of fuel.<sup>12</sup>

These calculations are based on historical and forecasted information stated on a consistent basis. The Energy Information Administration changed the methodology and coverage for estimating gasoline demand beginning with reports for January 1993 (see Appendix B for details). The fuel efficiency projections reflect the dwindling number of older, less fuel-efficient vehicles remaining to be retired as well as the increasing role of oxygenates, which are expected to moderate improvements in fuel efficiency.

Gasoline producers and marketers are now anticipating their second full winter season under the new oxygenated gasoline regulations, which were promulgated under the Clean Air Act Amendments of 1990, and intended to reduce the level of carbon monoxide in the air. The oxygenated season generally extends from November through February for 39 designated carbon monoxide nonattainment areas. The 1992-1993 oxygenated gasoline season proved to be a success in terms of supplies of the specially formulated

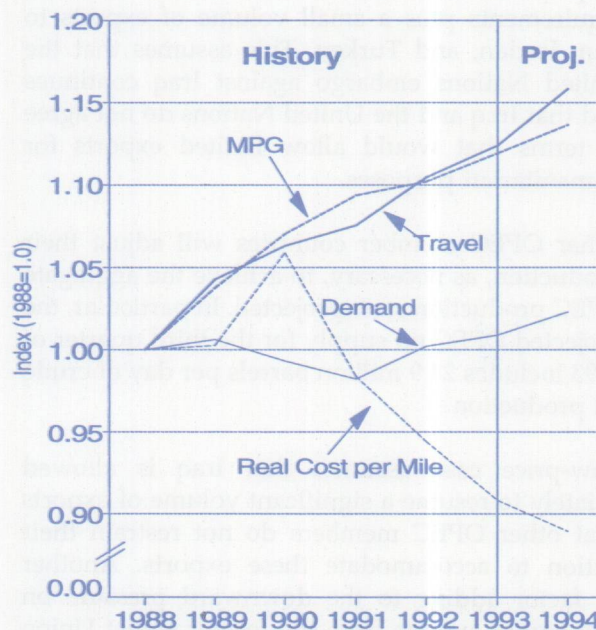


Figure 5. Gasoline Market Trends Indexed to 1988

Note: Indexed values show consistent basis. See Appendix B.

Sources: **History:** Energy Information Administration, Short-Term Integrated Forecasting System database; Federal Highway Administration, *Traffic Volume Trends*. **Projections:** Tables 3, 7, and B1.

fuel being provided efficiently by the gasoline distribution system. A review of last season's performance indicates that the supply system worked well, with oxygenated gasoline supplies being efficiently targeted to the nonattainment areas. The Energy Information Administration has released a detailed review of the 1992-1993 oxygenated gasoline season, with the finding that demand for oxygenates needed as blending agents in the production of oxygenated gasoline (principally methyl tertiary butyl ether and ethanol) during the November to February period was about 15 percent below predicted levels.<sup>13</sup> The main reason for the lower-than-expected oxygenate demand was the successful minimization of "spillover," or excess oxygenated gasoline supply to areas adjacent to nonattainment areas.

### Jet Fuel

Jet fuel demand registered a 1.2-percent decline in 1992 (Figure 6). Although some of that decline was related to

<sup>12</sup>Internal calculations based on Short-Term Integrating Forecast System (STIFS) model simulation results.

<sup>13</sup>See Charles Dale, "The Economics of the Clean Air Act Amendments of 1990: Review of the 1992-1993 Oxygenated Motor Gasoline Season," *Petroleum Supply Monthly*, DOE/EIA-0109(93/07), or *Petroleum Marketing Monthly*, DOE/EIA-0380(93/08).

<sup>14</sup>Energy Information Administration, *Petroleum Supply Monthly*, DOE/EIA-0109(93/05), Table S5.  
<sup>15</sup>Internal calculations based on STHS model simulation results.  
<sup>16</sup>Energy Information Administration, *Short-Term Energy Outlook*, Second Quarter 1993, DOE/EIA-0202(93/3Q) (Washington, DC, May 1993), pp 10-11.

Residual fuel oil demand in the first quarter 1993 continued a decline that began in the late 1970's when heavy petroleum fuels began to be displaced by other fuels, including natural gas, coal, and nuclear power.

**Residual Fuel Oil**

The Clean Air Act Amendments of 1990 established a new, sharply lower standard for the sulfur content of on-highway diesel fuel, to take effect October 1, 1993. The new diesel fuel standard applies nationwide and affects about 46 percent of the total domestic demand for distillate fuel oil, or about 8.2 percent of total U.S. petroleum product demand. Higher operating and capital costs required to produce low-sulfur diesel fuel should yield a price premium of 3 to 4 cents per gallon over heating oil and other high-sulfur distillates.<sup>16</sup>

Growth in distillate fuel oil demand is expected to be strong for the rest of this year as well as in 1994. For the rest of 1993, continued strong growth in transportation demand as well as assumptions of normal weather are expected to result in a 5.4 percent increase in distillate fuel demand for the year as a whole. Assuming normal weather patterns, distillate deliveries in 1994 are projected to rise a further 3.8 percent, with commercial demand leading the way. Industrial demand is projected to rise 5 percent<sup>15</sup> due to continuing increases in manufacturing production and to the greater use of distillate as the natural gas market becomes progressively tighter.

Demand for distillate fuel oil increased by a modest 2 percent in 1992 as a result of milder-than-normal weather and moderate economic growth.<sup>14</sup> During the first quarter of 1993, however, the recovery in transportation demand as well as colder-than-normal weather in the Northwest boosted deliveries by 7.8 percent.

**Distillate Fuel Oil**

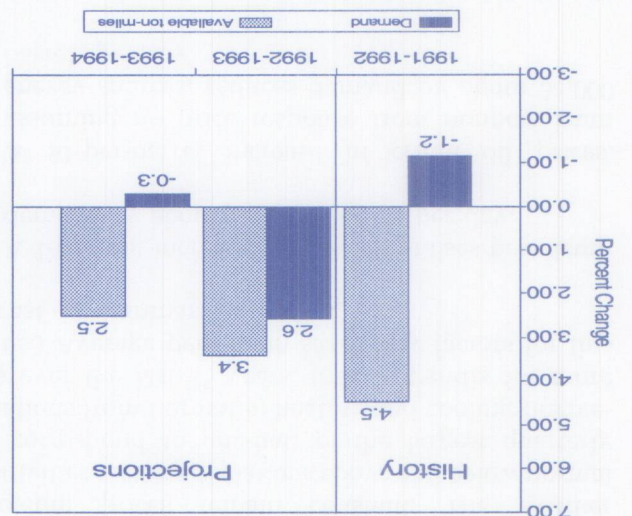
aircraft, are expected to result in a slight decline in deliveries in 1994. Demand growth is projected to average approximately 1 percent for 1993 and 1994. Growth in revenue ton-miles is projected to average 2.4 percent; growth in available capacity is projected to average almost 3 percent, resulting in a slight decline in load factors.

Nevertheless, the industry managed to record a more than 6-percent increase in revenue ton-miles in 1992 with available ton-miles increasing by only 4.5 percent. That resulted in an increase in the average load factor to 55 percent, similar to pre-recession levels. In the first quarter of 1993, jet fuel markets staged a rebound, with both revenue ton-miles and demand increasing 5 percent over the same period last year. Available data also indicate that demand for the second quarter rose almost 3 percent from the same period last year. Over the forecast period, demand for jet fuel is expected to continue increasing, but growth is not expected to be as brisk as in previous recoveries. In fact, the robust demand growth during the first half of 1993, in combination with projected increases in fuel efficiencies resulting from the deployment of new

offset the steep decline during the first half of 1991. recovery in jet fuel consumption was insufficient to discounts to discretionary travelers, the subsequent aggressive marketing by airlines in the form of deep brought about by Persian-Gulf related activity. Despite economic uncertainty, part of that decrease resulted from the unusually strong demand in early 1991

7. Sources: History: Federal Aviation Administration, Projections: Tables 3 and

**Figure 6. Annual Change in U.S. Jet Fuel Market Indicators**



and by increases in efficiency. First quarter 1993 demand for residual fuel was 15 percent below the same period a year ago. In the base case, residual fuel oil demand is not expected to begin recovering until 1994. Demand in 1994 is forecast to grow 7.4 percent over 1993, as residual fuel begins to recover at the expense of natural gas whose relative price is expected to rise by more than 15 percent.

Most of the decline in residual fuel demand over the last 15 years has been absorbed by a reduction in imports. However, U.S. refiners have also reduced residual fuel production over the last 4 years. Inputs to coking and catalytic hydrocracking units which convert "bottom-of-the-barrel" residual fuels to more valuable lighter products has shown a steady increase over this period.<sup>17</sup> The forecast increase in residual fuel oil demand in 1994 is expected to be supplied by increases in both refinery output and net imports.

### **Other Petroleum Products**

Demand for other petroleum products increased by 6.6 percent in 1992. Higher-than-expected demand for certain miscellaneous products and colder-than-normal weather during the fourth quarter account for much of that strength. In 1993, other petroleum products demand is expected to rise by 2.1 percent, due to continued strength in industrial and petrochemical production. In 1994, continued increases in industrial and petrochemical production are expected to account for much of the 3.2-percent increase in overall demand.

### **Petroleum Demand and Production Sensitivities**

The petroleum demand and supply outlook for the mid-price case is based on normal temperatures and a particular set of macroeconomic assumptions. In order to enhance the usefulness of the mid-case forecast, Tables 9 and 10 provide a range of possible outcomes for petroleum demand and supply when alternative macroeconomic, price, and weather assumptions are used.

<sup>17</sup>Energy Information Administration, *Petroleum Supply Annual 1992*, DOE/EIA-0340(92)/1 (Washington, DC, May 1993), pp. 21 and 47; and earlier issues.

<sup>18</sup>The oil demand sensitivity factors were derived from internal calculations of the Demand Models of the Short-Term Integrated Forecasting System. The oil supply sensitivity was derived implicitly from Tables 6 and 8 and includes uncertainty components not strictly related to price variation. The latter sensitivity is averaged over the last two quarters of 1993 and all four quarters of 1994.

<sup>19</sup>Of this total, the lower 48 States accounted for 370,000 barrels of oil per day. The uncertainty of 110,000 barrels per day for the lower 48 States contains 80,000 barrels of oil per day that results from varying the low- and high-price case estimates by an amount equal to 1 percent of the 1992 fourth quarter oil rate and reducing that amount starting with the first quarter of 1993 through the end of 1994. The remaining 30,000 barrels per day is additional oil production expected from the Point Arguello field in the Pacific Federal Outer Continental Shelf. The larger portion of the difference (300,000 barrels per day) is attributable to the price impact where more drilling is expected at higher prices, as well as more frequent well maintenance and reduction of well abandonments.

The petroleum price sensitivity assumes that non-petroleum prices remain constant. The weather sensitivities assume deviations above and below normal that correspond to one-half of the largest quarterly deviations from normal in heating and cooling degree-days over the last 15 years. (See Appendix for more details.) Average petroleum sensitivity factors for this forecast are summarized below:<sup>18</sup>

- A 1-percent increase in real GDP raises petroleum demand by about 143,000 barrels per day.
- A \$1-per-barrel increase in crude oil prices, assuming no price response from nonpetroleum energy sources, reduces demand by about 34,000 barrels per day.
- A \$1-per-barrel increase in crude oil prices boosts domestic oil supply (crude oil and natural gas liquids production) by 74,000 barrels per day.
- A 1-percent increase in heating degree-days increases demand by about 46,000 barrels per day; a 1-percent increase in cooling degree-days increases petroleum demand by about 20,000 barrels per day.

For 1993, projections of the rate of domestic crude oil production range from 6.79 million barrels per day in the low-price case to 6.94 million barrels per day in the high-price case (Tables 6 and 8). This range increases in 1994, with production rates of 6.4 million barrels per day in the low-price case and 6.86 million barrels per day in the high-price case. These estimates contain an element of uncertainty that goes beyond expected price impacts in the two cases. In the fourth quarter of 1994, for example, the difference between the low- and high-price case is 450,000 barrels per day.<sup>19</sup> About 33 percent of this range of production can be attributed to uncertainties in the preliminary estimates of current production levels and the timing of expected events. About 67 percent of this range is attributed to the impact of prices on drilling rates and well maintenance (Table 10).



# Outlook for Other Major Energy Sources

## Natural Gas

Total demand for natural gas is expected to continue to grow steadily in 1993 and 1994: by 3.1 percent in 1993, to 20.36 trillion cubic feet, and by 3.6 percent in 1994, to 21.1 trillion cubic feet (Table 11). Demand was 19.75 trillion cubic feet in 1992.

Growth in demand will be achieved despite rising natural gas prices. The average wellhead price for natural gas in 1993 will be 17 percent higher than in 1992. In 1994, an additional 9 percent rise is anticipated with prices averaging in excess of \$2.25 per million cubic feet, the highest level since 1985. Demand growth is due to a combination of factors, including stronger economic growth, relatively cold winter weather, and an increase in gas-fired electricity generation. Figure 7 illustrates natural gas consumption levels by sector for 1992 to 1994. Rising consumption of natural gas in the past few years has been supported by substantial expansion of the interstate pipeline system. From 1991 through 1992, about 4.4 billion cubic feet per day of additional interstate pipeline capacity was placed in service in the lower 48 States.<sup>20</sup>

Implementation of FERC Order 636 is to take place on November 1, 1993, which is when all pipelines are expected to have completed their restructuring, prior to the 1993-1994 winter heating season. Although uncertainties exist regarding the impact of Order 636 on gas prices to end users, the expected effect on natural gas markets is greater efficiency and competition.

Natural gas demand is projected to grow the fastest in the residential sector in 1993, with a growth rate of 7.0 percent. Residential sector growth is primarily the result of the close-to-normal winter weather in 1993 relative to 1992. Normal weather is again assumed for 1994, so that weather effects will not figure in 1994 demand, which will be flat. In 1994, the industrial and electric utility sectors will lead, with growth rates of 6.9 and 5.7 percent, respectively. Industrial growth is mainly due to rising manufacturing output and increasing consumption of gas by non-utility electricity generators. Gas use to generate electricity by both electric utility

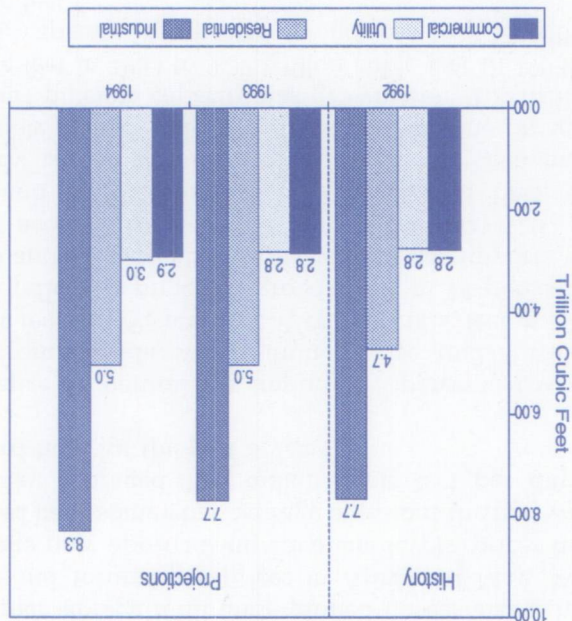


Figure 7. Natural Gas Demand by Sector

Sources: History: Energy Information Administration, *Natural Gas Monthly* (September 1992). Projections: Table 11.

generators and industrial non-utility generators is forecast to increase as the economy accelerates. Gas will also replace some nuclear power generation in the utility sector as a number of nuclear plants are expected to be down for maintenance and refueling.

Total dry gas production is forecast to increase by 3.5 percent in 1993, to 18.4 trillion cubic feet, and by 2.0 percent in 1994, to 18.8 trillion cubic feet. Natural gas production has tended to grow despite the nearly 50 percent decline in drilling since 1985.<sup>21</sup> However, low drilling activity in the face of rising demand has narrowed the gap between production and productive capacity, particularly since 1991. This has led to some uncertainty regarding the ability of producers to meet increases in peak period demand without increasing reliance on working gas storage and Canadian imports.

<sup>20</sup>Energy Information Administration, *Natural Gas 1992, Issues and Trends*, DOE/EIA-0560(92), March 1993.

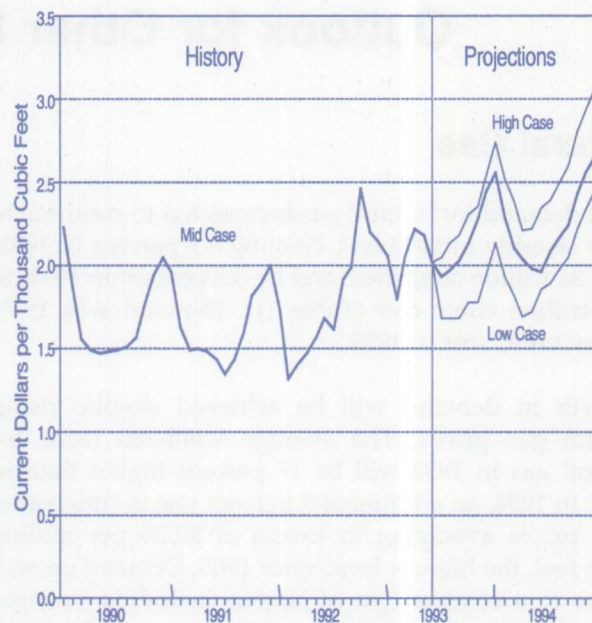
<sup>21</sup>Energy Information Administration, *Historical Monthly Energy Review 1973-1988*, DOE/EIA-0035(73-88); and *Monthly Energy Review*, April 1993, DOE/EIA-0035(93/04).

Colder-than-expected weather in March 1993 reduced working gas storage to unusually low levels. Storage levels on April 1 were 17 percent below the year ago level, due to strong withdrawals in the wake of the March 12-13 blizzard and the cold weather that lingered for the remainder of the month.<sup>22</sup> A scramble for summer storage refill underpinned unseasonably high spot and futures gas prices in April and May. With storage now approaching adequate levels, prices have settled back somewhat. Storage injections the first week of May averaged 11.8 billion cubic feet per day, a record high for the past 8 years.<sup>23</sup>

Reliance on natural gas imports, 98 percent of which are from Canada, will continue to rise, to 2.09 trillion cubic feet in 1993 and to 2.35 trillion cubic feet in 1994. This reflects a projected growth rate of 14 percent in 1993 and 12 percent in 1994. Natural gas imports will thus account for over 10 percent of total U.S. gas demand in 1993, and over 11 percent in 1994. The steady rise in imports from Canada has been made possible by the rapid growth in gas pipeline capacity. Import pipeline capacity has grown from 1.77 trillion cubic feet in 1983 to 3.37 trillion cubic feet in 1993. In 1994, capacity is expected to increase to 3.41 trillion cubic feet.<sup>24</sup>

The Baker-Hughes rig count has been rising steadily through May and June, from 617 on May 7 to 732 on July 2.<sup>25</sup> However, this rise is from record low levels set earlier in 1993. Most of the gain in drilling reflects a search for gas. The expectation of continued higher wellhead prices in 1993 and 1994 should provide incentive for increased drilling (Figure 8).

Spot wellhead prices on a monthly basis peaked at \$2.23 per million Btu last October, then fell steadily, bottoming out at \$1.66 per million Btu in February of this year, when warm winter weather lowered demand and eased pressure on prices.<sup>26</sup> However, by February, underground storage levels were unusually low. Thus, when cold weather returned in March, spot prices quickly rose to winter-like price levels, reaching \$2.18 cents per million Btu in April. Later, unseasonably hot weather on the East Coast in the latter part of spring caused increases in electric utility demand, resulting in prices rising once more above normal seasonal levels. These short-term counter seasonal movements in price



**Figure 8. Natural Gas Wellhead Prices**

Sources: **History:** Energy Information Administration, *Natural Gas Monthly* (September 1992). **Projections:** Table 5.

appear to indicate a progressive tightening in the short-term relationship between natural gas demand and supply. As a result of this tightening, the average wellhead price for 1993 will be almost 17 percent higher than the 1992 average with most of the difference occurring in the second half of the year. In 1993, large growth in natural gas demand will be satisfied by further increases in domestic supply. Production levels, however, will not keep up with demand growth. The difference will have to be made up by increases (at record levels) of Canadian gas imports and net withdrawals from domestic storage during peak periods.

In 1994, average wellhead prices are projected to increase by an additional 9 percent over 1993 prices. Although slightly rising crude oil prices and continued economic growth will put some upward pressure on natural gas prices, the key reason for wellhead price escalation is declining productive capacity relative to

<sup>22</sup>*Natural Gas Week*, May 19, 1993

<sup>23</sup>*Natural Gas Week*, May 17, 1993.

<sup>24</sup>Estimates of pipeline export capacity from Bureau of Energy, Mines and Resources, Canada, and Energy Information Administration, Office of Oil and Gas.

<sup>25</sup>*Natural Gas Week*, May 24 and July 5, 1993.

<sup>26</sup>*Natural Gas Week*, March 1, 1993, page 6.

rate of decline has slowed over the past few years as the factors causing the price drop have also slowed. Prices in 1993 are expected to remain flat compared to 1992. Prices are expected to increase slightly in 1994, as rising transportation and mining and operating costs offset continued productivity increases and due to additional costs incurred by compliance with the Clean Air Act. On January 1, 1995, Phase I of the Clean Air Act will require that 110 coal-burning electric utility plants reduce SO<sub>2</sub> emissions.<sup>30</sup> It is estimated that the effect of this Act will add about 1 to 2 cents per million Btu to the price of coal in the latter part of 1994, with some of the affected utilities having coal prices rise by as much as 17 percent. The increase in coal prices will result in higher electricity prices.<sup>31</sup>

The United Mine Workers of America (UMWA) strike of selected companies that began on May 10 of this year has resulted in price rises for spot coal. Some spot prices in the East have increased by about \$1 to \$2 dollars per ton.<sup>32</sup> If the strike continues to escalate and lasts throughout the year, U.S. average coal prices to electric utilities can be expected to increase by several cents per million Btu. Consumer and producer stocks may be drawn down significantly if the strike lingers.

## Electricity

Total demand for electricity is expected to increase by 2.9 percent in both 1993 and 1994 (Table 13). Milder-than-normal-temperatures during most of 1992 (Table 2) resulted in a decrease in demand in all sectors except the industrial sector. The effect of normal weather in 1993 is expected to support growth in all consuming sectors (Figure 9). The colder winter and spring weather this year (compared to 1992) gives an added boost to residential electricity growth in 1993.

The rebound in electricity demand in 1993 will be met by increased output from coal, nuclear and hydroelectric power generation. To a lesser extent, oil will also contribute to meeting incremental growth. Oil-based utility generation is expected to increase by 7.1 percent in 1993 after falling by 30 percent in 1992. In

demand.<sup>27</sup> Productive capacity is defined as the maximum average production rate that can be sustained for a specific month and is a function of gas production and drilling.<sup>28</sup> The level of capacity was relatively steady from the late 1980's through 1991, then began falling in 1992. A decline in drilling over the last several years, caused largely by falling natural gas prices, is the principal reason why the productive capacity will continue to drop. Conversely, higher wellhead prices and the expectation of continued price increases in the future should provide incentives for more drilling, therefore increasing the supply of natural gas.

## Coal

Growth in electricity demand and industrial output will spur growth in coal production and demand over the next 2 years. Electric utility coal consumption grew by 1.0 percent in 1992 despite weak demand for electricity.<sup>29</sup> In 1993, a modest increase of 1.7 percent is forecasted for the utility sector. Utility coal demand is expected to increase by 3.1 percent in 1994 as electricity demand grows and nuclear-fired generation declines (Table 12).

Increases in the domestic production of steel are expected to produce a somewhat higher demand for coal at coke plants, particularly in 1994. Coal demand by the retail and industrial sectors is expected to grow steadily in 1993 and continue growing at a slower pace in 1994. U.S. coal exports are expected to decline in 1993 due to the continuing weakness of the European economy, and the continuing subsidies for domestic European coal. Exports are projected to rebound with Europe's economy, and reach 100 million tons in 1994.

Coal prices have fallen since 1986. This is largely the result of the continuing gains in productivity, which includes the closing of non-productive mines, expanded use of longwall mining in underground mines, and the proportional growth of the cheaper western coal. The

<sup>27</sup>Energy Information Administration, *Natural Gas Productive Capacity for the Lower 48 States 1982 through 1993*, DOE/EIA-0542(93) and *Energy Information Administration, Natural Gas Productive Capacity for the Lower 48 States 1982 through 1993*, DOE/EIA-0542(93)

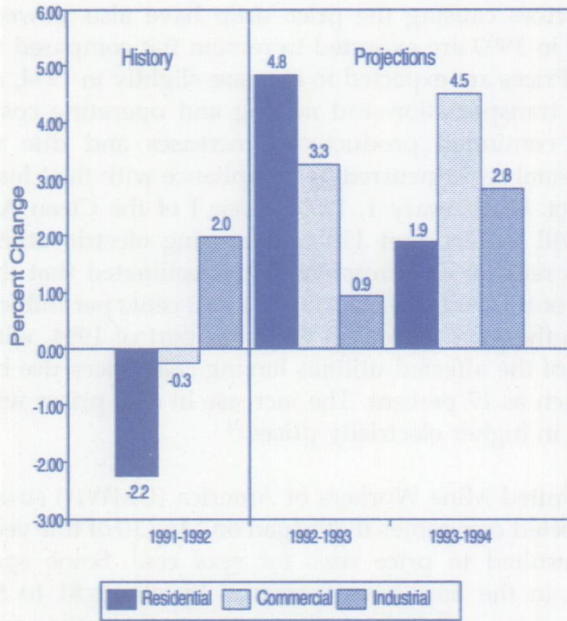
<sup>28</sup>Energy Information Administration, *Natural Gas Productive Capacity for the Lower 48 States 1982 through 1993*, DOE/EIA-0542(93)

<sup>29</sup>Total coal demand was 888 million tons in 1991 (Energy Information Administration, *Monthly Energy Review*, DOE/EIA-0035(92/12)) and 893 million tons in 1992 (Table 12).

<sup>30</sup>Environmental Protection Agency, *Clean Air Act Amendments of 1990*, "Title IV Acid Deposition Program," pages 1-3, November 1990.

<sup>31</sup>Based on internal EIA calculations. It was estimated that compliance with Phase I of the Clean Air Act requiring low sulfur coal will cost about \$5.00 per ton of coal or about a 17 percent price increase for the approximately 2.5 percent of the coal burned at electric utilities that will be affected by Phase I. In order to meet the January 1, 1995 date, those utilities will be stockpiling the coal by the second half of 1994.

<sup>32</sup>*Coal Week*, May 3, 1993 and June 14, 1993, page 5.



**Figure 9. Annual Change in U.S. Electricity Demand by Sector**

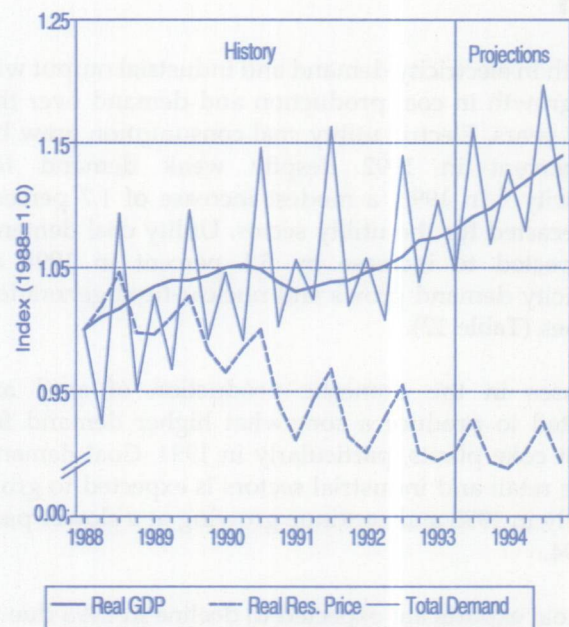
Source: Table 13.

1994, oil generation will increase by 16.6 percent and gas generation will increase by 4.6 percent. Real residential electricity prices are projected to decrease by an average of 2 percent annually from 1992 through 1994, as the declining cost of capital offsets the expected increase in maintenance and fossil fuel costs (Figure 10).

U.S. utilities are expected to supply about 2.4 percent more electricity in 1993 and 2.8 percent in 1994. Non-utility supply of electricity to electric utilities is expected to grow at an even more rapid rate, rising by 6.5 percent in 1993 and by 6.0 percent in 1994. Net imports of electricity from Canada are also expected to grow.

Hydroelectric power generation is expected to rebound in 1993 almost to 1991 levels due to a return to normal rainfall in the Pacific Northwest, where more than one-half of total U.S. hydroelectric capacity is located. Watersheds have been below normal levels over the past few years, particularly in 1992.<sup>33</sup>

Nuclear power generation is expected to increase in 1993 by 2.1 percent. This increase is due to the coming on line of the Comanche Peak 2 nuclear unit in Glen Rose, Texas, and due to improving performance of nuclear plants as a whole. Nuclear generation in 1994 is expected to drop slightly from 1993 levels due to units being off line for maintenance and refueling.



**Figure 10. Electricity Indicators**

Sources: **History:** Energy Information Administration, *Monthly Energy Review*, DOE/EIA-0035(90/01) and DOE/EIA-0035(93/06); U.S. Department of Commerce, Bureau of Economic Analysis, *Survey of Current Business*, various issues. **Projections:** Tables 2, 5, and 13.

<sup>33</sup>The hydroelectric generation forecast is now being produced by the Short-Term Hydroelectric Generation Model. This model uses an autoregressive integrated moving average (ARIMA) time series model with precipitation as an explanatory variable.

## Appendix A

# Computation of Petroleum Demand Sensitivities

Table 9 summarizes the response of forecasts for U.S. total petroleum demand to changes in assumptions for economic growth, world crude oil prices, and weather. The values in this table are computed using the Short-Term Integrated Forecasting Model (STIFS). The STIFS model is documented in EIA's *Short-Term Integrated Forecasting System: 1990 Model Documentation Report* (DOE/EIA-M009, June 1990). The purpose of the model is to generate forecasts of U.S. energy supply, demand, and prices. Key inputs include assumptions for the imported price of crude oil, the rate of U.S. economic growth, and weather (cooling and heating degree-days). Forecasts are generated for production, imports, exports, demand, and prices for refined petroleum products, natural gas, coal, and electricity.

A key relationship shown in Table 9 is that between petroleum demand and economic activity. Gross domestic product (GDP) is varied from low to high for each of the 2 projection years, and the resulting change in petroleum demand is calculated. For each of the 2 years, the percentage difference in GDP is computed as the difference between the low and high case levels shown in Table 2, divided by the midpoint of this range. Thus, the percentage difference in GDP for 1993 (two quarters only) is as follows:  $(5132 - 5061) / ((5132 + 5061) / 2)$ , or 1.4 percent. For each period, the petroleum demand difference (in million barrels per day) is divided by the percentage difference in GDP. For the last 2 quarters of 1993, the average petroleum demand difference is 154,000 barrels per day; thus, a 1-percent change in GDP corresponds to a change in

demand of  $(154,000/1.4)$ , or 111,000 barrels per day. For 1994, a 3.9-percent change in GDP corresponds to a change in demand of 626,000 barrels per day; thus, a 1-percent change in GDP corresponds to a demand change of 159,000 barrels per day. The average of the 1993 and 1994 results (weighting the 1993 results by 184 days and 1994 by 365 days) is 143,000 barrels per day per 1 percent difference in GDP. Table 9 also shows the differences in petroleum demand due to changes in energy prices caused by varying the world crude oil price. The change in petroleum demand (in million barrels per day) is divided by the change in the crude oil price (in dollars per barrel), and the result is averaged over the 2 projection years to get an estimate of the change in petroleum demand per dollar of change in the crude oil price.

The influence of weather on petroleum demand is also calculated, using the mid-case values for economic activity and imported crude oil prices. The percentage changes in heating or cooling degree-days are computed and divided by the changes in petroleum demand, and the result is averaged over the 2 projection periods to get an estimate of the change in petroleum demand per 1-percent change in heating and cooling degree-days. The changes in demand due to changes in heating degree-days apply only to the heating season, roughly the first and fourth quarters of the year, while the changes in demand due to changes in cooling degree-days apply only to the cooling season, roughly the second and third quarters of the year.

## Appendix B

# Data Series Adjustments

Beginning with the reporting of January 1993 data, the Energy Information Administration (EIA) has made adjustments to the product supplied series for finished motor gasoline, motor gasoline blending components, and NGLs. It was recognized that motor gasoline statistics published by the EIA through 1992 were underreported because the reporting system was not collecting all fuel ethanol and motor gasoline blending components being blended downstream of the refinery. Details of these changes and the effect they would have had on historical 1992 data reported by the *Petroleum Supply Monthly* were reported in the *Short-Term Energy Outlook Second Quarter 1993*, DOE/EIA-0202(93/2Q) (Washington, DC, May 1993), pp. 27-28.

As a result of these changes, any comparison of 1993 or 1994 motor gasoline forecasts to historical data must recognize the adjustments made in 1993. Historical 1992 data is shown below as the originally reported data series and also as adjusted series which are consistent with current procedures. EIA data publications will continue to report the original unadjusted 1992 volumes. In this *STEO*, all reported 1992 volumes reflect original unadjusted data. All reported volume changes or percentage differences between 1992 and 1993 or 1994 use adjusted 1992 data so that the data are on a consistent basis for reporting changes.

**Table B1. U.S. Petroleum Supply and Demand: Mid World Oil Price Case**  
(Million Barrels per Day, Except Closing Stocks)

	1992				1993				1994				Year		
	1st	2nd	3rd	4th	1st	2nd	3rd	4th	1st	2nd	3rd	4th	1992	1993	1994
<b>Supply</b>															
Other Supply															
NGL Production (Original Data Series) . . .	1.69	1.70	1.66	1.74									1.70		
NGL Production (Adjusted Basis) . . . . .	1.76	1.76	1.83	1.83	1.85	1.74	1.64	1.69	1.69	1.62	1.62	1.67	1.76	1.73	1.65
Total Supply (Original Series) . . . . .	16.91	16.74	16.98	17.49									17.03		
Total Supply (Adjusted Basis) . . . . .	16.97	16.80	17.04	17.58	17.27	17.10	17.56	17.87	18.01	17.55	17.80	18.21	17.10	17.45	17.89
<b>Demand</b>															
Motor Gasoline (Original Series) . . . . .	6.99	7.34	7.46	7.28									7.27		
Motor Gasoline (Adjusted Basis) . . . . .	7.07	7.44	7.58	7.41	7.09	7.52	7.64	7.45	7.24	7.60	7.73	7.54	7.37	7.43	7.53
Other Oils (Original Series) . . . . .	4.03	4.15	4.33	4.43									4.24		
Other Oils (Adjusted Basis) . . . . .	4.02	4.12	4.26	4.40	4.16	4.10	4.53	4.49	4.38	4.30	4.60	4.49	4.20	4.32	4.47
Total Demand (Original Data Series) . . . . .	16.91	16.74	16.98	17.49									17.03		
Total Demand (Adjusted Basis) . . . . .	16.97	16.80	17.04	17.58	17.27	17.10	17.56	17.87	18.01	17.55	17.80	18.24	17.10	17.45	17.89

Note: Ethanol blending into gasoline is reported as "motor gasoline field production" in the *Petroleum Supply Monthly* and is included in "Other Supply - NGL Production."

**Table 2. U.S. Macroeconomic and Weather Assumptions**

	Price Case	1992				1993				1994				Year		
		1st	2nd	3rd	4th	1st	2nd	3rd	4th	1st	2nd	3rd	4th	1992	1993	1994
<b>Macroeconomic<sup>a</sup></b>																
Real Gross Domestic Product (GDP) (billion 1987 dollars) . . . . .	High							<i>5098</i>	<i>5166</i>	<i>5248</i>	<i>5323</i>	<i>5369</i>	<i>5422</i>	<i>5075</i>	<i>5340</i>	
	Mid	<b>4874</b>	<b>4893</b>	<b>4934</b>	<b>4991</b>	<b>5003</b>	<b>5035</b>	<i>5078</i>	<i>5115</i>	<i>5166</i>	<i>5215</i>	<i>5259</i>	<i>5310</i>	<b>4923</b>	<b>5058</b>	<b>5237</b>
	Low							<i>5058</i>	<i>5064</i>	<i>5083</i>	<i>5107</i>	<i>5148</i>	<i>5199</i>	<i>5040</i>	<i>5134</i>	
Percentage Change from Prior Year . . . . .	High							<i>3.3</i>	<i>3.5</i>	<i>4.9</i>	<i>5.7</i>	<i>5.3</i>	<i>5.0</i>	<i>3.1</i>	<i>5.2</i>	
	Mid	<b>1.6</b>	<b>1.6</b>	<b>2.1</b>	<b>3.2</b>	<b>2.6</b>	<b>2.9</b>	<i>2.9</i>	<i>2.5</i>	<i>3.3</i>	<i>3.6</i>	<i>3.6</i>	<i>3.8</i>	<b>2.1</b>	<b>2.7</b>	<b>3.5</b>
	Low							<i>2.5</i>	<i>1.5</i>	<i>1.6</i>	<i>1.4</i>	<i>1.8</i>	<i>2.7</i>	<i>2.4</i>	<i>1.9</i>	
Annualized Percentage Change from Prior Quarter . . . . .	High							<i>5.0</i>	<i>5.3</i>	<i>6.3</i>	<i>5.7</i>	<i>3.5</i>	<i>3.9</i>			
	Mid	<b>2.9</b>	<b>1.6</b>	<b>3.4</b>	<b>4.6</b>	<b>1.0</b>	<b>2.6</b>	<i>3.4</i>	<i>2.9</i>	<i>4.0</i>	<i>3.8</i>	<i>3.4</i>	<i>3.9</i>			
	Low							<i>1.8</i>	<i>0.5</i>	<i>1.5</i>	<i>1.9</i>	<i>3.2</i>	<i>4.0</i>			
GDP Implicit Price Deflator (index, 1987=1.000) . . . . .	High							<i>1.240</i>	<i>1.245</i>	<i>1.252</i>	<i>1.258</i>	<i>1.265</i>	<i>1.271</i>	<i>1.238</i>	<i>1.261</i>	
	Mid	<b>1.198</b>	<b>1.206</b>	<b>1.211</b>	<b>1.219</b>	<b>1.229</b>	<b>1.236</b>	<i>1.242</i>	<i>1.249</i>	<i>1.259</i>	<i>1.266</i>	<i>1.273</i>	<i>1.280</i>	<b>1.209</b>	<b>1.239</b>	<b>1.269</b>
	Low							<i>1.244</i>	<i>1.253</i>	<i>1.265</i>	<i>1.274</i>	<i>1.281</i>	<i>1.289</i>	<i>1.240</i>	<i>1.277</i>	
Percentage Change from Prior Year . . . . .	High							<i>2.4</i>	<i>2.1</i>	<i>1.9</i>	<i>1.8</i>	<i>2.0</i>	<i>2.1</i>	<i>2.4</i>	<i>1.9</i>	
	Mid	<b>2.8</b>	<b>2.6</b>	<b>2.5</b>	<b>2.5</b>	<b>2.6</b>	<b>2.5</b>	<i>2.6</i>	<i>2.5</i>	<i>2.4</i>	<i>2.4</i>	<i>2.5</i>	<i>2.5</i>	<b>2.6</b>	<b>2.5</b>	<b>2.4</b>
	Low							<i>2.7</i>	<i>2.8</i>	<i>2.9</i>	<i>3.1</i>	<i>3.0</i>	<i>2.9</i>	<i>2.6</i>	<i>3.0</i>	
Real Disposable Personal Income (billion 1987 dollars) . . . . .	High							<i>3681</i>	<i>3729</i>	<i>3771</i>	<i>3819</i>	<i>3848</i>	<i>3880</i>	<i>3677</i>	<i>3829</i>	
	Mid	<b>3566</b>	<b>3576</b>	<b>3581</b>	<b>3618</b>	<b>3643</b>	<b>3657</b>	<i>3666</i>	<i>3690</i>	<i>3708</i>	<i>3737</i>	<i>3765</i>	<i>3796</i>	<b>3585</b>	<b>3664</b>	<b>3752</b>
	Low							<i>3650</i>	<i>3651</i>	<i>3646</i>	<i>3656</i>	<i>3681</i>	<i>3712</i>	<i>3650</i>	<i>3674</i>	
Percentage Change from Prior Year . . . . .	High							<i>2.8</i>	<i>3.1</i>	<i>3.5</i>	<i>4.4</i>	<i>4.5</i>	<i>4.0</i>	<i>2.6</i>	<i>4.1</i>	
	Mid	<b>2.2</b>	<b>2.0</b>	<b>2.0</b>	<b>2.5</b>	<b>2.2</b>	<b>2.3</b>	<i>2.4</i>	<i>2.0</i>	<i>1.8</i>	<i>2.2</i>	<i>2.7</i>	<i>2.9</i>	<b>2.2</b>	<b>2.2</b>	<b>2.4</b>
	Low							<i>1.9</i>	<i>0.9</i>	<i>0.1</i>	<i>0.0</i>	<i>0.8</i>	<i>1.7</i>	<i>1.8</i>	<i>0.7</i>	
Manufacturing Production (index, 1987=1.000) . . . . .	High							<i>1.139</i>	<i>1.166</i>	<i>1.196</i>	<i>1.223</i>	<i>1.237</i>	<i>1.248</i>	<i>1.131</i>	<i>1.226</i>	
	Mid	<b>1.053</b>	<b>1.067</b>	<b>1.070</b>	<b>1.087</b>	<b>1.104</b>	<b>1.115</b>	<i>1.129</i>	<i>1.141</i>	<i>1.154</i>	<i>1.169</i>	<i>1.181</i>	<i>1.192</i>	<b>1.069</b>	<b>1.122</b>	<b>1.174</b>
	Low							<i>1.119</i>	<i>1.115</i>	<i>1.113</i>	<i>1.115</i>	<i>1.125</i>	<i>1.136</i>	<i>1.113</i>	<i>1.122</i>	
Percentage Change from Prior Year . . . . .	High							<i>6.4</i>	<i>7.3</i>	<i>8.3</i>	<i>9.7</i>	<i>8.6</i>	<i>7.0</i>	<i>5.8</i>	<i>8.4</i>	
	Mid	<b>2.6</b>	<b>3.7</b>	<b>2.4</b>	<b>3.7</b>	<b>4.8</b>	<b>4.5</b>	<i>5.5</i>	<i>5.0</i>	<i>4.5</i>	<i>4.8</i>	<i>4.6</i>	<i>4.5</i>	<b>3.1</b>	<b>5.0</b>	<b>4.6</b>
	Low							<i>4.6</i>	<i>2.6</i>	<i>0.8</i>	<i>0.0</i>	<i>0.5</i>	<i>1.9</i>	<i>4.1</i>	<i>0.8</i>	
OECD Economic Growth <sup>b</sup> (percent) . . . . .														<b>1.6</b>	<b>1.4</b>	<b>2.6</b>
<b>Weather<sup>c</sup></b>																
Heating Degree Days																
U.S. . . . .	<b>2162</b>	<b>565</b>	<b>127</b>	<b>1674</b>	<b>2342</b>	<b>520</b>	<i>88</i>	<i>1669</i>	<i>2401</i>	<i>536</i>	<i>88</i>	<i>1669</i>	<b>4528</b>	<b>4619</b>	<b>4694</b>	
New England . . . . .	<b>3167</b>	<b>1011</b>	<b>242</b>	<b>2277</b>	<b>3300</b>	<b>830</b>	<i>193</i>	<i>2223</i>	<i>3223</i>	<i>928</i>	<i>193</i>	<i>2223</i>	<b>6697</b>	<b>6546</b>	<b>6567</b>	
Middle Atlantic . . . . .	<b>2831</b>	<b>756</b>	<b>117</b>	<b>2039</b>	<b>2979</b>	<b>639</b>	<i>118</i>	<i>2018</i>	<i>2988</i>	<i>727</i>	<i>118</i>	<i>2018</i>	<b>5743</b>	<b>5754</b>	<b>5851</b>	
U.S. Gas-Weighted . . . . .	<b>2112</b>	<b>531</b>	<b>123</b>	<b>1692</b>	<b>2367</b>	<b>527</b>	<i>81</i>	<i>1686</i>	<i>2426</i>	<i>539</i>	<i>81</i>	<i>1686</i>	<b>4458</b>	<b>4661</b>	<b>4732</b>	
Cooling Degree Days (U.S.) . . . . .	<b>30</b>	<b>264</b>	<b>665</b>	<b>62</b>	<b>17</b>	<b>301</b>	<i>755</i>	<i>63</i>	<i>28</i>	<i>327</i>	<i>755</i>	<i>63</i>	<b>1021</b>	<b>1136</b>	<b>1172</b>	

<sup>a</sup>Macroeconomic projections from DRI/McGraw-Hill model forecasts are seasonally adjusted at annual rates and modified as appropriate to the mid world oil price case. These mid-case macroeconomic projections are then modified by the low and high world oil price cases (as shown in Table 5) and by various explicit economic assumptions, with the low world oil price case applied to the high macroeconomic case, and the high world oil price case applied to the low macroeconomic case.

<sup>b</sup>OECD: Organization for Economic Cooperation and Development.

<sup>c</sup>Population-weighted degree days. A degree day indicates the temperature variation from 65 degrees Fahrenheit (calculated as the simple average of the daily minimum and maximum temperatures) weighted by 1980 population. Normal is used for the forecast period and is defined as the average number of degree days between 1951 and 1980 for a given period.

Note: Historical data are printed in bold, forecasts are in italic.

Sources: Historical data: Energy Information Administration, *Monthly Energy Review*, DOE/EIA-0035(93/06); U.S. Department of Commerce, Bureau of Economic Analysis, *Survey of Current Business*, April 1993; U.S. Department of Commerce, National Oceanic and Atmospheric Administration, *Monthly State, Regional, and National Heating/Cooling Degree Days Weighted by Population*; Federal Reserve System, *Statistical Release G.17(419)*, April 1993. Macroeconomic projections are based on DRI/McGraw-Hill Forecast CONTROL0693.

**Table 3. U.S. Energy Indicators: Mid World Oil Price Case**

	1992				1993				1994				Year		
	1st	2nd	3rd	4th	1st	2nd	3rd	4th	1st	2nd	3rd	4th	1992	1993	1994
<b>Macroeconomic*</b>															
Real Fixed Investment (billion 1987 dollars)	<b>681</b>	<b>706</b>	<b>710</b>	<b>733</b>	<b>748</b>	<b>769</b>	<i>789</i>	<i>814</i>	<i>833</i>	<i>857</i>	<i>880</i>	<i>902</i>	<b>708</b>	<i>780</i>	<i>868</i>
Real Exchange Rate (index)	<b>0.977</b>	<b>0.985</b>	<b>0.947</b>	<b>1.009</b>	<b>1.038</b>	<b>1.009</b>	<i>1.021</i>	<i>1.032</i>	<i>1.038</i>	<i>1.045</i>	<i>1.047</i>	<i>1.039</i>	<b>0.980</b>	<i>1.025</i>	<i>1.042</i>
Business Inventory Change (billion 1987 dollars)	<b>-8.7</b>	<b>-6.5</b>	<b>3.9</b>	<b>-14.5</b>	<b>1.4</b>	<b>5.2</b>	<i>7.8</i>	<i>10.4</i>	<i>16.1</i>	<i>19.0</i>	<i>22.1</i>	<i>24.9</i>	<b>-6.5</b>	<i>6.2</i>	<i>20.5</i>
Wholesale Price Index (index, 1980-1984=1.000)	<b>1.159</b>	<b>1.172</b>	<b>1.179</b>	<b>1.178</b>	<b>1.183</b>	<b>1.196</b>	<i>1.199</i>	<i>1.206</i>	<i>1.215</i>	<i>1.219</i>	<i>1.225</i>	<i>1.234</i>	<b>1.172</b>	<i>1.196</i>	<i>1.224</i>
Consumer Price Index (index, 1980-1984=1.000)	<b>1.389</b>	<b>1.399</b>	<b>1.409</b>	<b>1.420</b>	<b>1.433</b>	<b>1.445</b>	<i>1.454</i>	<i>1.465</i>	<i>1.478</i>	<i>1.489</i>	<i>1.499</i>	<i>1.510</i>	<b>1.404</b>	<i>1.449</i>	<i>1.494</i>
Petroleum Product Price Index (index, 1980-1984=1.000)	<b>0.589</b>	<b>0.660</b>	<b>0.681</b>	<b>0.659</b>	<b>0.626</b>	<b>0.664</b>	<i>0.629</i>	<i>0.615</i>	<i>0.673</i>	<i>0.681</i>	<i>0.657</i>	<i>0.640</i>	<b>0.647</b>	<i>0.634</i>	<i>0.663</i>
Non-Farm Employment (millions)	<b>108.13</b>	<b>108.43</b>	<b>108.53</b>	<b>108.67</b>	<b>109.10</b>	<b>109.81</b>	<i>110.39</i>	<i>110.93</i>	<i>111.57</i>	<i>112.26</i>	<i>113.00</i>	<i>113.80</i>	<b>108.44</b>	<i>110.06</i>	<i>112.66</i>
Commercial Employment (millions)	<b>70.73</b>	<b>70.99</b>	<b>71.09</b>	<b>71.31</b>	<b>71.69</b>	<b>72.56</b>	<i>73.16</i>	<i>73.66</i>	<i>74.20</i>	<i>74.79</i>	<i>75.42</i>	<i>76.08</i>	<b>71.03</b>	<i>72.77</i>	<i>75.12</i>
Total Industrial Production (index, 1987=1.000)	<b>1.051</b>	<b>1.063</b>	<b>1.065</b>	<b>1.083</b>	<b>1.097</b>	<b>1.104</b>	<i>1.117</i>	<i>1.128</i>	<i>1.141</i>	<i>1.154</i>	<i>1.165</i>	<i>1.175</i>	<b>1.066</b>	<i>1.112</i>	<i>1.159</i>
Housing Stock (millions)	<b>105.12</b>	<b>105.39</b>	<b>105.62</b>	<b>105.90</b>	<b>106.20</b>	<b>106.50</b>	<i>106.80</i>	<i>107.10</i>	<i>107.40</i>	<i>107.70</i>	<i>108.10</i>	<i>108.40</i>	<b>105.51</b>	<i>106.65</i>	<i>107.90</i>
<b>Miscellaneous</b>															
Gas-Weighted Industrial Production (index, 1987=1.000)	<b>1.065</b>	<b>1.074</b>	<b>1.068</b>	<b>1.087</b>	<b>1.092</b>	<b>1.100</b>	<i>1.114</i>	<i>1.126</i>	<i>1.139</i>	<i>1.151</i>	<i>1.160</i>	<i>1.169</i>	<b>1.074</b>	<i>1.108</i>	<i>1.155</i>
Vehicle Miles Traveled (million miles per day)	<b>5596</b>	<b>6381</b>	<b>6517</b>	<b>5950</b>	<b>5706</b>	<i>6503</i>	<i>6664</i>	<i>6117</i>	<i>5925</i>	<i>6679</i>	<i>6839</i>	<i>6280</i>	<i>6111</i>	<i>6247</i>	<i>6431</i>
Vehicle Fuel Efficiency (index)	<b>19.06</b>	<b>20.69</b>	<b>20.82</b>	<b>19.47</b>	<b>19.16</b>	<i>20.60</i>	<i>20.77</i>	<i>19.55</i>	<i>19.48</i>	<i>20.92</i>	<i>21.08</i>	<i>19.84</i>	<i>20.01</i>	<i>20.02</i>	<i>20.33</i>
Real Vehicle Fuel Cost (Index)	<b>4.25</b>	<b>4.12</b>	<b>4.19</b>	<b>4.40</b>	<b>4.27</b>	<i>4.02</i>	<i>4.01</i>	<i>4.25</i>	<i>4.14</i>	<i>3.97</i>	<i>3.96</i>	<i>4.19</i>	<i>4.24</i>	<i>4.14</i>	<i>4.07</i>
Air Travel Capacity (available ton-miles)	<b>315.7</b>	<b>330.3</b>	<b>350.0</b>	<b>335.9</b>	<b>327.7</b>	<i>342.0</i>	<i>359.5</i>	<i>348.0</i>	<i>340.0</i>	<i>350.2</i>	<i>367.4</i>	<i>353.9</i>	<i>333.0</i>	<i>344.3</i>	<i>352.9</i>
Aircraft Utilization (revenue ton-miles)	<b>162.3</b>	<b>180.7</b>	<b>205.2</b>	<b>178.1</b>	<b>170.7</b>	<i>189.6</i>	<i>205.1</i>	<i>183.7</i>	<i>176.2</i>	<i>191.1</i>	<i>207.4</i>	<i>186.3</i>	<i>181.6</i>	<i>187.3</i>	<i>190.2</i>
Aircraft Yield (cents per ton-mile)	<b>14.46</b>	<b>12.55</b>	<b>10.97</b>	<b>13.20</b>	<b>14.47</b>	<i>13.82</i>	<i>12.54</i>	<i>13.45</i>	<i>14.15</i>	<i>13.53</i>	<i>12.39</i>	<i>13.37</i>	<i>12.80</i>	<i>13.57</i>	<i>13.36</i>
Residential Natural Gas Customers (millions)	<b>51.59</b>	<b>51.45</b>	<b>51.13</b>	<i>51.00</i>	<i>51.73</i>	<i>51.67</i>	<i>51.25</i>	<i>51.58</i>	<i>52.40</i>	<i>52.25</i>	<i>51.96</i>	<i>52.39</i>	<i>51.29</i>	<i>51.56</i>	<i>52.25</i>
Commercial Natural Gas Customers (millions)	<b>4.43</b>	<b>4.38</b>	<b>4.31</b>	<i>4.25</i>	<i>4.37</i>	<i>4.37</i>	<i>4.27</i>	<i>4.34</i>	<i>4.49</i>	<i>4.44</i>	<i>4.36</i>	<i>4.47</i>	<i>4.34</i>	<i>4.34</i>	<i>4.44</i>
Raw Steel Production (millions)	<b>23.23</b>	<b>23.43</b>	<b>22.32</b>	<b>22.63</b>	<b>23.62</b>	<i>24.09</i>	<i>24.28</i>	<i>25.32</i>	<i>23.97</i>	<i>25.01</i>	<i>25.25</i>	<i>26.22</i>	<i>91.60</i>	<i>97.31</i>	<i>100.45</i>

\*Macroeconomic projections from DRI/McGraw-Hill model forecasts are seasonally adjusted at annual rates and modified as appropriate to the mid world oil price case. These mid-case macroeconomic projections are then modified by the low and high world price cases (as shown in Table 5) and by various explicit economic assumptions, with low world oil price case applied to the high macroeconomic case, and high world oil price case applied to the low macroeconomic case.

Note: Historical data are printed in bold, forecasts are in italic.

Sources: Historical data: Energy Information Administration, *Monthly Energy Review*, DOE/EIA-0035(93/03); U.S. Department of Commerce, Bureau of Economic Analysis, *Survey of Current Business*, April 1993; U.S. Department of Commerce, National Oceanic and Atmospheric Administration, *Monthly State, Regional, and National Heating/Cooling Degree Days Weighted by Population*; Federal Reserve System, *Statistical Release G.17(419)*, April 1993. Macroeconomic projections are based on DRI/McGraw-Hill Forecast CONTROL0693.



**Table 4. International Petroleum Supply and Demand: Mid World Oil Price Case**  
(Million Barrels per Day, Except Closing Stocks)

	1992				1993				1994				Year		
	1st	2nd	3rd	4th	1st	2nd	3rd	4th	1st	2nd	3rd	4th	1992	1993	1994
<b>Demand<sup>a</sup></b>															
OECD															
U.S. (50 States) .....	16.91	16.74	16.98	17.49	17.27	17.10	17.56	17.87	18.01	17.55	17.80	18.21	17.03	17.45	17.89
U.S. Territories .....	0.23	0.22	0.20	0.21	0.24	0.22	0.21	0.22	0.23	0.23	0.22	0.23	0.21	0.22	0.22
Canada .....	1.62	1.59	1.66	1.70	1.67	1.62	1.69	1.73	1.68	1.66	1.74	1.78	1.64	1.68	1.72
Europe <sup>b</sup> .....	14.06	12.99	13.58	13.73	13.68	12.96	13.20	13.85	13.91	13.14	13.39	14.05	13.59	13.42	13.62
Japan .....	5.90	4.90	4.98	5.61	6.00	4.87	5.05	5.79	6.11	4.95	5.14	5.89	5.35	5.43	5.52
Australia and New Zealand .....	0.81	0.83	0.81	0.84	0.84	0.84	0.83	0.85	0.84	0.86	0.85	0.87	0.82	0.84	0.85
Total OECD .....	39.52	37.26	38.20	39.59	39.69	37.60	38.54	40.30	40.77	38.39	39.14	41.02	38.64	39.03	39.83
Non-OECD															
Former Soviet Union .....	7.98	6.96	6.26	6.22	6.33	5.69	5.62	5.67	5.59	5.22	5.06	5.11	6.85	5.82	5.24
China .....	2.58	2.58	2.68	2.68	2.80	2.82	2.84	2.80	3.00	3.02	3.04	3.00	2.63	2.82	3.01
Europe .....	1.24	1.13	1.05	1.05	1.13	1.10	1.03	1.05	1.16	1.13	1.06	1.08	1.11	1.08	1.11
Other Non-OECD .....	17.66	17.48	17.17	18.25	18.39	18.20	18.25	19.20	19.35	19.13	19.19	20.20	17.64	18.51	19.47
Total Non-OECD .....	29.46	28.15	27.15	28.20	28.66	27.80	27.74	28.73	29.11	28.50	28.34	29.40	28.24	28.23	28.83
Total World Demand .....	68.98	65.41	65.35	67.79	68.35	65.40	66.27	69.03	69.88	66.88	67.48	70.41	66.88	67.26	68.66
<b>Supply<sup>c</sup></b>															
OECD															
U.S. (50 States) .....	9.90	9.78	9.63	9.78	9.85	9.43	9.39	9.43	9.39	9.21	9.14	9.19	9.77	9.52	9.23
Canada .....	2.10	2.01	2.12	2.10	2.08	2.08	2.12	2.14	2.15	2.09	2.12	2.15	2.08	2.10	2.12
North Sea <sup>d</sup> .....	4.38	4.11	4.24	4.59	4.35	4.22	4.32	4.94	4.92	4.68	4.74	5.24	4.33	4.46	4.90
Other OECD .....	1.47	1.47	1.47	1.45	1.42	1.40	1.40	1.40	1.41	1.41	1.41	1.41	1.46	1.40	1.41
Total OECD .....	17.84	17.37	17.46	17.91	17.70	17.12	17.23	17.91	17.87	17.38	17.41	17.99	17.64	17.49	17.66
Non-OECD															
OPEC .....	26.14	25.68	26.36	27.20	27.39	26.71	27.20	27.78	28.26	28.23	28.65	29.25	26.35	27.27	28.60
Former Soviet Union .....	9.37	9.16	8.69	8.44	8.28	7.99	7.71	7.44	7.32	7.20	7.09	6.98	8.91	7.85	7.15
China .....	2.84	2.84	2.83	2.84	2.88	2.87	2.87	2.87	2.87	2.87	2.87	2.87	2.84	2.87	2.87
Mexico .....	3.16	3.15	3.14	3.12	3.10	3.11	3.11	3.11	3.12	3.12	3.12	3.12	3.14	3.11	3.12
Other Non-OECD .....	7.99	8.05	8.16	8.14	8.23	8.16	8.37	8.47	8.60	8.70	8.81	8.91	8.08	8.31	8.75
Total Non-OECD .....	49.49	48.88	49.18	49.74	49.88	48.84	49.25	49.66	50.16	50.12	50.54	51.12	49.32	49.41	50.49
Total World Supply .....	67.34	66.25	66.64	67.64	67.59	65.96	66.48	67.57	68.03	67.50	67.95	69.11	66.97	66.90	68.15
<b>Stock Changes and Statistical Discrepancy</b>															
Net Stock Withdrawals or Additions (-)															
U.S. (50 States including SPR) .....	0.51	-0.36	-0.35	0.47	0.09	-0.70	-0.33	0.21	0.52	-0.48	-0.33	0.26	0.07	-0.18	-0.01
Other .....	1.08	-0.25	-1.54	-0.35	0.66	-0.52	-0.33	0.79	0.82	-0.65	-0.64	0.53	-0.27	0.15	0.01
Total Stock Withdrawals .....	1.58	-0.61	-1.90	0.13	0.76	-1.22	-0.67	1.00	1.34	-1.13	-0.98	0.79	-0.20	-0.03	0.00
Statistical Discrepancy .....	0.06	-0.24	0.61	0.02	0.01	0.66	0.46	0.46	0.50	0.51	0.51	0.51	0.11	0.40	0.51
<b>Closing Stocks (billion barrels)<sup>e</sup></b> .....	5.44	5.50	5.67	5.66	5.59	5.70	5.76	5.67	5.55	5.65	5.74	5.67	5.66	5.67	5.67
<b>Non-OPEC Supply</b> .....	41.20	40.57	40.28	40.44	40.20	39.25	39.28	39.80	39.78	39.27	39.30	39.86	40.62	39.63	39.55
<b>Net Exports from Former Soviet Union</b> ...	1.40	2.21	2.43	2.22	1.95	2.30	2.09	1.76	1.73	1.98	2.03	1.86	2.06	2.03	1.90

<sup>a</sup>Demand for petroleum by the OECD countries is synonymous with "petroleum product supplied" which is defined in the glossary of the EIA *Petroleum Supply Monthly*, DOE/EIA-0109. Demand for petroleum by the non-OECD countries is "apparent consumption" which includes internal consumption, refinery fuel and loss, and bunking.

<sup>b</sup>OECD Europe includes eastern Germany.

<sup>c</sup>Includes production of crude oil (including lease condensates), natural gas plant liquids, other hydrogen and hydrocarbons for refinery feedstocks, refinery gains, alcohol, and liquids produced from coal and other sources.

<sup>d</sup>Includes offshore supply from Denmark, Germany, the Netherlands, Norway, and the United Kingdom.

<sup>e</sup>Excludes stocks held in the Former CPEs.

OECD: Organization for Economic Cooperation and Development

OPEC: Organization of Petroleum Exporting Countries: Algeria, Gabon, Indonesia, Iran, Iraq, Kuwait, Libya, Nigeria, Qatar, Saudi Arabia, the United Arab Emirates, and Venezuela.

SPR: Strategic Petroleum Reserve

Former CPEs: Albania, Bulgaria, Cambodia, China, Cuba, Czech Republic, Hungary, Laos, Mongolia, North Korea, Poland, Romania, Slovak Republic, the Former Soviet Union, Vietnam, and Former Yugoslavia

Notes: Minor discrepancies with other published EIA historical data are due to rounding. Historical data are printed in bold, forecasts are in italic. The forecasts were generated by simulation of the Short-Term Integrated Forecasting System.

Sources: Energy Information Administration, *International Petroleum Statistics Report*, DOE/EIA-0520(93/06); and *International Energy Annual 1992*, DOE/EIA-0219(92); Organization for Economic Cooperation and Development, Annual and Monthly Oil Statistics Database through March 1993.

**Table 5. U.S. Energy Prices  
(Nominal Dollars)**

	Price Case	1992				1993				1994				Year		
		1st	2nd	3rd	4th	1st	2nd	3rd	4th	1st	2nd	3rd	4th	1992	1993	1994
<b>Imported Crude Oil<sup>a</sup></b> (dollars per barrel) .....	Low							<i>16.00</i>	<i>16.00</i>	<i>16.00</i>	<i>16.00</i>	<i>16.00</i>	<i>17.00</i>			
	Mid	<b>16.15</b>	<b>18.66</b>	<b>19.42</b>	<b>18.27</b>	<b>17.31</b>	<b>17.92</b>	<i>18.00</i>	<i>19.00</i>	<i>18.00</i>	<i>18.00</i>	<i>19.00</i>	<i>20.00</i>	<b>18.20</b>	<b>18.07</b>	<b>18.77</b>
	High							<i>20.00</i>	<i>21.00</i>	<i>21.00</i>	<i>21.00</i>	<i>21.00</i>	<i>22.00</i>		<i>19.08</i>	<i>21.26</i>
<b>Natural Gas Wellhead</b> (dollars per thousand cubic feet) .....	Low							<i>1.68</i>	<i>1.84</i>	<i>1.98</i>	<i>1.79</i>	<i>2.00</i>	<i>2.33</i>		<i>1.91</i>	<i>2.02</i>
	Mid	<b>1.49</b>	<b>1.57</b>	<b>1.84</b>	<b>2.26</b>	<b>1.96</b>	<b>2.14</b>	<i>1.98</i>	<i>2.29</i>	<i>2.33</i>	<i>2.03</i>	<i>2.19</i>	<i>2.53</i>	<b>1.79</b>	<b>2.09</b>	<b>2.27</b>
	High							<i>2.12</i>	<i>2.40</i>	<i>2.56</i>	<i>2.29</i>	<i>2.52</i>	<i>2.92</i>		<i>2.16</i>	<i>2.57</i>
<b>Petroleum Products</b>																
Gasoline, Retail <sup>b</sup> (dollars per gallon) .....	Low							<i>1.17</i>	<i>1.16</i>	<i>1.15</i>	<i>1.19</i>	<i>1.19</i>	<i>1.19</i>		<i>1.18</i>	<i>1.18</i>
	Mid	<b>1.12</b>	<b>1.19</b>	<b>1.23</b>	<b>1.21</b>	<b>1.17</b>	<b>1.20</b>	<i>1.21</i>	<i>1.22</i>	<i>1.19</i>	<i>1.24</i>	<i>1.25</i>	<i>1.26</i>	<b>1.19</b>	<b>1.20</b>	<b>1.23</b>
	High							<i>1.25</i>	<i>1.27</i>	<i>1.26</i>	<i>1.31</i>	<i>1.31</i>	<i>1.30</i>		<i>1.22</i>	<i>1.29</i>
No. 2 Diesel Oil, Retail (dollars per gallon) .....	Low							<i>1.05</i>	<i>1.13</i>	<i>1.13</i>	<i>1.11</i>	<i>1.12</i>	<i>1.18</i>		<i>1.10</i>	<i>1.13</i>
	Mid	<b>1.05</b>	<b>1.10</b>	<b>1.12</b>	<b>1.13</b>	<b>1.10</b>	<b>1.10</b>	<i>1.10</i>	<i>1.20</i>	<i>1.17</i>	<i>1.16</i>	<i>1.18</i>	<i>1.24</i>	<b>1.10</b>	<b>1.12</b>	<b>1.19</b>
	High							<i>1.15</i>	<i>1.25</i>	<i>1.24</i>	<i>1.23</i>	<i>1.23</i>	<i>1.29</i>		<i>1.15</i>	<i>1.25</i>
No. 2 Heating Oil, Wholesale (dollars per gallon) .....	Low							<i>0.51</i>	<i>0.54</i>	<i>0.53</i>	<i>0.51</i>	<i>0.51</i>	<i>0.58</i>		<i>0.55</i>	<i>0.53</i>
	Mid	<b>0.53</b>	<b>0.59</b>	<b>0.62</b>	<b>0.59</b>	<b>0.57</b>	<b>0.56</b>	<i>0.56</i>	<i>0.62</i>	<i>0.58</i>	<i>0.56</i>	<i>0.59</i>	<i>0.65</i>	<b>0.58</b>	<b>0.58</b>	<b>0.60</b>
	High							<i>0.61</i>	<i>0.67</i>	<i>0.66</i>	<i>0.63</i>	<i>0.64</i>	<i>0.70</i>		<i>0.60</i>	<i>0.66</i>
No. 2 Heating Oil, Retail (dollars per gallon) .....	Low							<i>0.84</i>	<i>0.90</i>	<i>0.94</i>	<i>0.89</i>	<i>0.85</i>	<i>0.94</i>		<i>0.91</i>	<i>0.91</i>
	Mid	<b>0.94</b>	<b>0.92</b>	<b>0.90</b>	<b>0.94</b>	<b>0.95</b>	<b>0.92</b>	<i>0.89</i>	<i>0.97</i>	<i>0.99</i>	<i>0.93</i>	<i>0.92</i>	<i>1.01</i>	<b>0.93</b>	<b>0.94</b>	<b>0.97</b>
	High							<i>0.93</i>	<i>1.02</i>	<i>1.06</i>	<i>1.01</i>	<i>0.98</i>	<i>1.06</i>		<i>0.96</i>	<i>1.03</i>
No. 6 Residual Fuel Oil, Retail <sup>c</sup> (dollars per barrel) .....	Low							<i>13.06</i>	<i>13.89</i>	<i>14.43</i>	<i>13.53</i>	<i>13.35</i>	<i>15.04</i>		<i>14.04</i>	<i>14.13</i>
	Mid	<b>11.90</b>	<b>13.63</b>	<b>15.82</b>	<b>16.05</b>	<b>14.72</b>	<b>14.56</b>	<i>14.53</i>	<i>16.10</i>	<i>15.84</i>	<i>14.82</i>	<i>15.33</i>	<i>16.99</i>	<b>14.19</b>	<b>15.00</b>	<b>15.77</b>
	High							<i>15.98</i>	<i>17.55</i>	<i>18.02</i>	<i>16.93</i>	<i>16.76</i>	<i>18.43</i>		<i>15.74</i>	<i>17.58</i>
<b>Electric Utility Fuels</b>																
Coal (dollars per million Btu) .....	Low							<i>1.37</i>	<i>1.37</i>	<i>1.37</i>	<i>1.39</i>	<i>1.39</i>	<i>1.39</i>		<i>1.38</i>	<i>1.39</i>
	Mid	<b>1.42</b>	<b>1.43</b>	<b>1.40</b>	<b>1.41</b>	<b>1.39</b>	<b>1.41</b>	<i>1.40</i>	<i>1.40</i>	<i>1.41</i>	<i>1.43</i>	<i>1.43</i>	<i>1.43</i>	<b>1.41</b>	<b>1.40</b>	<b>1.42</b>
	High							<i>1.44</i>	<i>1.44</i>	<i>1.45</i>	<i>1.48</i>	<i>1.48</i>	<i>1.48</i>		<i>1.42</i>	<i>1.47</i>
Heavy Oil <sup>d</sup> (dollars per million Btu) .....	Low							<i>2.27</i>	<i>2.46</i>	<i>2.50</i>	<i>2.30</i>	<i>2.31</i>	<i>2.65</i>		<i>2.42</i>	<i>2.43</i>
	Mid	<b>2.14</b>	<b>2.36</b>	<b>2.72</b>	<b>2.73</b>	<b>2.54</b>	<b>2.46</b>	<i>2.50</i>	<i>2.82</i>	<i>2.72</i>	<i>2.50</i>	<i>2.63</i>	<i>2.96</i>	<b>2.47</b>	<b>2.57</b>	<b>2.69</b>
	High							<i>2.73</i>	<i>3.05</i>	<i>3.07</i>	<i>2.83</i>	<i>2.85</i>	<i>3.19</i>		<i>2.69</i>	<i>2.98</i>
Natural Gas (dollars per million Btu) .....	Low							<i>2.21</i>	<i>2.42</i>	<i>2.60</i>	<i>2.30</i>	<i>2.46</i>	<i>2.83</i>		<i>2.43</i>	<i>2.52</i>
	Mid	<b>2.14</b>	<b>2.08</b>	<b>2.30</b>	<b>2.86</b>	<b>2.60</b>	<b>2.60</b>	<i>2.46</i>	<i>2.82</i>	<i>2.93</i>	<i>2.52</i>	<i>2.64</i>	<i>3.02</i>	<b>2.33</b>	<b>2.60</b>	<b>2.75</b>
	High							<i>2.59</i>	<i>2.93</i>	<i>3.15</i>	<i>2.77</i>	<i>2.93</i>	<i>3.37</i>		<i>2.67</i>	<i>3.02</i>
<b>Other Residential</b>																
Natural Gas (dollars per thousand cubic feet) .....	Low							<i>7.45</i>	<i>5.89</i>	<i>5.74</i>	<i>6.32</i>	<i>7.53</i>	<i>6.10</i>		<i>6.02</i>	<i>6.10</i>
	Mid	<b>5.52</b>	<b>6.00</b>	<b>7.24</b>	<b>5.88</b>	<b>5.69</b>	<b>6.34</b>	<i>7.51</i>	<i>6.02</i>	<i>5.88</i>	<i>6.46</i>	<i>7.63</i>	<i>6.17</i>	<b>5.86</b>	<b>6.06</b>	<b>6.22</b>
	High							<i>7.54</i>	<i>6.06</i>	<i>5.92</i>	<i>6.55</i>	<i>7.79</i>	<i>6.30</i>		<i>6.07</i>	<i>6.31</i>
Electricity (cents per kilowatt-hour) .....	Low							<i>8.5</i>	<i>8.0</i>	<i>7.8</i>	<i>8.3</i>	<i>8.6</i>	<i>8.1</i>		<i>8.1</i>	<i>8.2</i>
	Mid	<b>7.8</b>	<b>8.3</b>	<b>8.6</b>	<b>8.2</b>	<b>7.8</b>	<b>8.3</b>	<i>8.7</i>	<i>8.3</i>	<i>8.0</i>	<i>8.5</i>	<i>8.8</i>	<i>8.4</i>	<b>8.2</b>	<b>8.3</b>	<b>8.4</b>
	High							<i>8.9</i>	<i>8.5</i>	<i>8.4</i>	<i>9.0</i>	<i>9.3</i>	<i>8.8</i>		<i>8.4</i>	<i>8.9</i>

<sup>a</sup>Cost of imported crude oil to U.S. refiners.

<sup>b</sup>Average for all grades and services.

<sup>c</sup>Average for all sulfur contents.

<sup>d</sup>Includes fuel oils No. 4, No. 5, and No. 6 and topped crude fuel oil prices.

Notes: Data are estimated for the fourth quarter of 1992. Prices exclude taxes, except prices for gasoline, residential natural gas, and diesel. Price cases are derived by simulating all energy product price models under the assumptions of the threeworld oil price cases using the mid macroeconomic case and normal weather assumptions for all simulations. Historical data are printed in bold, forecasts are in italic. The forecasts were generated by the following simulations of the Short-Term Integrated Forecasting System: for the mid oil price case, for the low oil price case, and for the high oil price case.

Sources: Historical data: Energy Information Administration, *Monthly Energy Review*, DOE/EIA-0035(93/06); and *Petroleum Marketing Monthly*, DOE/EIA-0380(93/05).

**Table 6. U.S. Petroleum Supply and Demand: Low World Oil Price Case**  
(Million Barrels per Day, Except Closing Stocks)

	1992				1993				1994				Year		
	1st	2nd	3rd	4th	1st	2nd	3rd	4th	1st	2nd	3rd	4th	1992	1993	1994
<b>Supply</b>															
<b>Crude Oil Supply</b>															
Domestic Production <sup>a</sup> . . . . .	<b>7.37</b>	<b>7.21</b>	<b>7.03</b>	<b>7.09</b>	<b>6.98</b>	<b>6.84</b>	<b>6.69</b>	<b>6.67</b>	<b>6.63</b>	<b>6.47</b>	<b>6.37</b>	<b>6.36</b>	<b>7.17</b>	<b>6.79</b>	<b>6.46</b>
Alaska . . . . .	<b>1.79</b>	<b>1.71</b>	<b>1.66</b>	<b>1.69</b>	<b>1.64</b>	<b>1.56</b>	<b>1.58</b>	<b>1.60</b>	<b>1.59</b>	<b>1.53</b>	<b>1.50</b>	<b>1.51</b>	<b>1.71</b>	<b>1.59</b>	<b>1.53</b>
Lower 48 . . . . .	<b>5.57</b>	<b>5.50</b>	<b>5.36</b>	<b>5.39</b>	<b>5.34</b>	<b>5.28</b>	<b>5.11</b>	<b>5.07</b>	<b>5.04</b>	<b>4.94</b>	<b>4.88</b>	<b>4.85</b>	<b>5.46</b>	<b>5.20</b>	<b>4.93</b>
Net Imports (including SPR) <sup>b</sup> . . . . .	<b>5.38</b>	<b>6.04</b>	<b>6.41</b>	<b>6.14</b>	<b>6.18</b>	<b>6.55</b>	<b>6.85</b>	<b>6.86</b>	<b>6.60</b>	<b>7.04</b>	<b>7.23</b>	<b>7.21</b>	<b>5.99</b>	<b>6.61</b>	<b>7.02</b>
Gross Imports (excluding SPR) . . . . .	<b>5.46</b>	<b>6.11</b>	<b>6.48</b>	<b>6.24</b>	<b>6.31</b>	<b>6.62</b>	<b>6.96</b>	<b>6.99</b>	<b>6.74</b>	<b>7.18</b>	<b>7.34</b>	<b>7.34</b>	<b>6.07</b>	<b>6.72</b>	<b>7.15</b>
SPR Imports . . . . .	<b>0.00</b>	<b>0.01</b>	<b>0.01</b>	<b>0.02</b>	<b>0.01</b>	<b>0.05</b>	<b>0.00</b>	<b>0.00</b>	<b>0.00</b>	<b>0.00</b>	<b>0.00</b>	<b>0.00</b>	<b>0.01</b>	<b>0.01</b>	<b>0.00</b>
Exports . . . . .	<b>0.08</b>	<b>0.08</b>	<b>0.08</b>	<b>0.11</b>	<b>0.14</b>	<b>0.11</b>	<b>0.11</b>	<b>0.13</b>	<b>0.14</b>	<b>0.13</b>	<b>0.11</b>	<b>0.13</b>	<b>0.09</b>	<b>0.12</b>	<b>0.13</b>
Other SPR Supply . . . . .	<b>0.00</b>	<b>0.00</b>	<b>0.01</b>	<b>0.02</b>	<b>0.02</b>	<b>0.02</b>	<b>0.02</b>	<b>0.01</b>	<b>0.01</b>	<b>0.01</b>	<b>0.01</b>	<b>0.01</b>	<b>0.01</b>	<b>0.02</b>	<b>0.01</b>
SPR Stock Withdrawn or Added (-) . . . . .	<b>0.00</b>	<b>-0.01</b>	<b>-0.02</b>	<b>-0.04</b>	<b>-0.03</b>	<b>-0.07</b>	<b>-0.02</b>	<b>-0.01</b>	<b>-0.01</b>	<b>-0.01</b>	<b>-0.01</b>	<b>-0.01</b>	<b>-0.02</b>	<b>-0.03</b>	<b>-0.01</b>
Other Stock Withdrawn or Added (-) . . . . .	<b>-0.15</b>	<b>0.15</b>	<b>0.03</b>	<b>0.04</b>	<b>-0.21</b>	<b>-0.08</b>	<b>0.04</b>	<b>0.00</b>	<b>-0.02</b>	<b>0.04</b>	<b>-0.02</b>	<b>0.00</b>	<b>0.02</b>	<b>-0.06</b>	<b>0.00</b>
Product Supplied and Losses . . . . .	<b>-0.02</b>	<b>-0.01</b>	<b>-0.01</b>	<b>-0.01</b>	<b>-0.01</b>	<b>-0.02</b>	<b>-0.02</b>	<b>-0.02</b>	<b>-0.02</b>	<b>-0.02</b>	<b>-0.02</b>	<b>-0.02</b>	<b>-0.01</b>	<b>-0.02</b>	<b>-0.02</b>
Unaccounted-for Crude Oil . . . . .	<b>0.27</b>	<b>0.29</b>	<b>0.25</b>	<b>0.20</b>	<b>0.12</b>	<b>0.46</b>	<b>0.26</b>	<b>0.26</b>	<b>0.26</b>	<b>0.26</b>	<b>0.26</b>	<b>0.26</b>	<b>0.25</b>	<b>0.28</b>	<b>0.26</b>
<b>Total Crude Oil Supply . . . . .</b>	<b>12.84</b>	<b>13.67</b>	<b>13.70</b>	<b>13.44</b>	<b>13.05</b>	<b>13.71</b>	<b>13.82</b>	<b>13.77</b>	<b>13.45</b>	<b>13.80</b>	<b>13.82</b>	<b>13.82</b>	<b>13.41</b>	<b>13.59</b>	<b>13.72</b>
<b>Other Supply</b>															
NGL Production . . . . .	<b>1.69</b>	<b>1.70</b>	<b>1.66</b>	<b>1.74</b>	<b>1.85</b>	<b>1.74</b>	<b>1.64</b>	<b>1.69</b>	<b>1.69</b>	<b>1.62</b>	<b>1.61</b>	<b>1.67</b>	<b>1.70</b>	<b>1.73</b>	<b>1.65</b>
Other Hydrocarbon and Alcohol Inputs . . . . .	<b>0.10</b>	<b>0.09</b>	<b>0.14</b>	<b>0.18</b>	<b>0.24</b>	<b>0.12</b>	<b>0.18</b>	<b>0.17</b>	<b>0.16</b>	<b>0.17</b>	<b>0.18</b>	<b>0.17</b>	<b>0.13</b>	<b>0.18</b>	<b>0.17</b>
Crude Oil Product Supplied . . . . .	<b>0.02</b>	<b>0.01</b>	<b>0.01</b>	<b>0.01</b>	<b>0.01</b>	<b>0.02</b>	<b>0.02</b>	<b>0.02</b>	<b>0.02</b>	<b>0.02</b>	<b>0.02</b>	<b>0.02</b>	<b>0.01</b>	<b>0.02</b>	<b>0.02</b>
Processing Gain . . . . .	<b>0.74</b>	<b>0.78</b>	<b>0.80</b>	<b>0.77</b>	<b>0.78</b>	<b>0.73</b>	<b>0.74</b>	<b>0.74</b>	<b>0.72</b>	<b>0.74</b>	<b>0.74</b>	<b>0.75</b>	<b>0.77</b>	<b>0.75</b>	<b>0.74</b>
Net Product Imports <sup>c</sup> . . . . .	<b>0.86</b>	<b>0.99</b>	<b>1.04</b>	<b>0.88</b>	<b>1.00</b>	<b>1.34</b>	<b>1.56</b>	<b>1.35</b>	<b>1.49</b>	<b>1.78</b>	<b>1.85</b>	<b>1.60</b>	<b>0.94</b>	<b>1.31</b>	<b>1.68</b>
Gross Product Imports <sup>c</sup> . . . . .	<b>1.75</b>	<b>1.83</b>	<b>1.81</b>	<b>1.82</b>	<b>1.76</b>	<b>2.20</b>	<b>2.38</b>	<b>2.27</b>	<b>2.37</b>	<b>2.62</b>	<b>2.67</b>	<b>2.52</b>	<b>1.80</b>	<b>2.15</b>	<b>2.55</b>
Product Exports . . . . .	<b>0.89</b>	<b>0.85</b>	<b>0.77</b>	<b>0.94</b>	<b>0.76</b>	<b>0.86</b>	<b>0.82</b>	<b>0.92</b>	<b>0.88</b>	<b>0.84</b>	<b>0.82</b>	<b>0.92</b>	<b>0.86</b>	<b>0.84</b>	<b>0.86</b>
Product Stock Withdrawn or Added (-) <sup>d</sup> . . . . .	<b>0.66</b>	<b>-0.49</b>	<b>-0.36</b>	<b>0.47</b>	<b>0.34</b>	<b>-0.56</b>	<b>-0.36</b>	<b>0.22</b>	<b>0.55</b>	<b>-0.51</b>	<b>-0.30</b>	<b>0.28</b>	<b>0.07</b>	<b>-0.09</b>	<b>0.00</b>
<b>Total Supply . . . . .</b>	<b>16.91</b>	<b>16.74</b>	<b>16.98</b>	<b>17.49</b>	<b>17.27</b>	<b>17.10</b>	<b>17.61</b>	<b>17.97</b>	<b>18.08</b>	<b>17.63</b>	<b>17.94</b>	<b>18.30</b>	<b>17.03</b>	<b>17.49</b>	<b>17.99</b>
<b>Demand</b>															
Motor Gasoline . . . . .	<b>6.99</b>	<b>7.34</b>	<b>7.46</b>	<b>7.28</b>	<b>7.09</b>	<b>7.52</b>	<b>7.67</b>	<b>7.49</b>	<b>7.27</b>	<b>7.64</b>	<b>7.78</b>	<b>7.58</b>	<b>7.27</b>	<b>7.44</b>	<b>7.57</b>
Jet Fuel . . . . .	<b>1.41</b>	<b>1.40</b>	<b>1.49</b>	<b>1.52</b>	<b>1.48</b>	<b>1.44</b>	<b>1.51</b>	<b>1.54</b>	<b>1.48</b>	<b>1.43</b>	<b>1.51</b>	<b>1.54</b>	<b>1.45</b>	<b>1.49</b>	<b>1.49</b>
Distillate Fuel Oil . . . . .	<b>3.22</b>	<b>2.82</b>	<b>2.77</b>	<b>3.10</b>	<b>3.47</b>	<b>2.98</b>	<b>2.84</b>	<b>3.26</b>	<b>3.60</b>	<b>3.09</b>	<b>2.96</b>	<b>3.38</b>	<b>2.98</b>	<b>3.14</b>	<b>3.26</b>
Residual Fuel Oil . . . . .	<b>1.26</b>	<b>1.03</b>	<b>0.94</b>	<b>1.16</b>	<b>1.07</b>	<b>1.07</b>	<b>1.06</b>	<b>1.17</b>	<b>1.32</b>	<b>1.16</b>	<b>1.06</b>	<b>1.20</b>	<b>1.09</b>	<b>1.09</b>	<b>1.19</b>
Other Oils <sup>e</sup> . . . . .	<b>4.03</b>	<b>4.15</b>	<b>4.33</b>	<b>4.43</b>	<b>4.16</b>	<b>4.10</b>	<b>4.53</b>	<b>4.51</b>	<b>4.40</b>	<b>4.31</b>	<b>4.62</b>	<b>4.60</b>	<b>4.24</b>	<b>4.33</b>	<b>4.49</b>
<b>Total Demand . . . . .</b>	<b>16.91</b>	<b>16.74</b>	<b>16.98</b>	<b>17.49</b>	<b>17.27</b>	<b>17.10</b>	<b>17.61</b>	<b>17.97</b>	<b>18.08</b>	<b>17.63</b>	<b>17.94</b>	<b>18.30</b>	<b>17.03</b>	<b>17.49</b>	<b>17.99</b>
<b>Total Petroleum Net Imports . . . . .</b>	<b>6.24</b>	<b>7.03</b>	<b>7.45</b>	<b>7.03</b>	<b>7.18</b>	<b>7.90</b>	<b>8.41</b>	<b>8.21</b>	<b>8.09</b>	<b>8.83</b>	<b>9.08</b>	<b>8.81</b>	<b>6.94</b>	<b>7.93</b>	<b>8.71</b>
<b>Closing Stocks (million barrels)</b>															
Crude Oil (excluding SPR) <sup>f</sup> . . . . .	<b>339</b>	<b>325</b>	<b>322</b>	<b>318</b>	<b>337</b>	<b>344</b>	<b>340</b>	<b>340</b>	<b>342</b>	<b>338</b>	<b>340</b>	<b>340</b>	<b>318</b>	<b>340</b>	<b>340</b>
Total Motor Gasoline . . . . .	<b>220</b>	<b>225</b>	<b>206</b>	<b>216</b>	<b>227</b>	<b>221</b>	<b>211</b>	<b>223</b>	<b>225</b>	<b>219</b>	<b>211</b>	<b>223</b>	<b>216</b>	<b>223</b>	<b>223</b>
Finished Motor Gasoline . . . . .	<b>182</b>	<b>188</b>	<b>168</b>	<b>178</b>	<b>187</b>	<b>184</b>	<b>173</b>	<b>184</b>	<b>185</b>	<b>182</b>	<b>173</b>	<b>183</b>	<b>178</b>	<b>184</b>	<b>183</b>
Blending Components . . . . .	<b>38</b>	<b>37</b>	<b>38</b>	<b>39</b>	<b>40</b>	<b>38</b>	<b>39</b>	<b>39</b>	<b>40</b>	<b>38</b>	<b>39</b>	<b>39</b>	<b>39</b>	<b>39</b>	<b>39</b>
Jet Fuel . . . . .	<b>44</b>	<b>45</b>	<b>48</b>	<b>43</b>	<b>41</b>	<b>43</b>	<b>47</b>	<b>48</b>	<b>47</b>	<b>47</b>	<b>47</b>	<b>48</b>	<b>43</b>	<b>48</b>	<b>48</b>
Distillate Fuel Oil . . . . .	<b>98</b>	<b>104</b>	<b>128</b>	<b>141</b>	<b>97</b>	<b>106</b>	<b>128</b>	<b>137</b>	<b>102</b>	<b>108</b>	<b>127</b>	<b>134</b>	<b>141</b>	<b>137</b>	<b>134</b>
Residual Fuel Oil . . . . .	<b>41</b>	<b>41</b>	<b>47</b>	<b>43</b>	<b>41</b>	<b>44</b>	<b>45</b>	<b>48</b>	<b>42</b>	<b>44</b>	<b>45</b>	<b>48</b>	<b>43</b>	<b>48</b>	<b>48</b>
Other Oils <sup>g</sup> . . . . .	<b>261</b>	<b>294</b>	<b>313</b>	<b>257</b>	<b>247</b>	<b>285</b>	<b>297</b>	<b>264</b>	<b>255</b>	<b>292</b>	<b>302</b>	<b>266</b>	<b>257</b>	<b>264</b>	<b>266</b>
<b>Total Stocks (excluding SPR) . . . . .</b>	<b>1002</b>	<b>1034</b>	<b>1064</b>	<b>1017</b>	<b>1006</b>	<b>1063</b>	<b>1092</b>	<b>1072</b>	<b>1024</b>	<b>1067</b>	<b>1096</b>	<b>1071</b>	<b>1017</b>	<b>1072</b>	<b>1071</b>
Crude Oil in SPR . . . . .	<b>569</b>	<b>570</b>	<b>571</b>	<b>575</b>	<b>578</b>	<b>584</b>	<b>585</b>	<b>587</b>	<b>588</b>	<b>589</b>	<b>590</b>	<b>591</b>	<b>575</b>	<b>587</b>	<b>591</b>
<b>Total Stocks (including SPR) . . . . .</b>	<b>1571</b>	<b>1603</b>	<b>1636</b>	<b>1592</b>	<b>1584</b>	<b>1647</b>	<b>1678</b>	<b>1658</b>	<b>1612</b>	<b>1656</b>	<b>1686</b>	<b>1662</b>	<b>1592</b>	<b>1658</b>	<b>1662</b>

<sup>a</sup>Includes lease condensate.

<sup>b</sup>Net imports equals gross imports plus SPR imports minus exports.

<sup>c</sup>Includes finished petroleum products, unfinished oils, gasoline blending components, and natural gas plant liquids for processing.

<sup>d</sup>Includes an estimate of minor product stock change based on monthly data.

<sup>e</sup>Includes crude oil product supplied, natural gas liquids, liquefied refinery gas, other liquids, and all finished petroleum products except motor gasoline, jet fuel, distillate, and residual fuel oil.

<sup>f</sup>Includes crude oil in transit to refineries.

<sup>g</sup>Includes stocks of all other oils such as aviation gasoline, kerosene, natural gas liquids (including ethane), aviation gasoline blending components, naphtha and other oils for petrochemical feedstock use, special naphthas, lube oils, wax, coke, asphalt, road oil, and miscellaneous oils.

SPR: Strategic Petroleum Reserve

NGL: Natural Gas Liquids

Notes: Minor discrepancies with other EIA published historical data are due to rounding. Historical data are printed in bold, forecasts are in italic. The forecasts were generated by simulation of the Short-Term Integrated Forecasting System.

Sources: Historical data: Energy Information Administration, *Petroleum Supply Annual 1992*, DOE/EIA-0340(92)/1; *Petroleum Supply Monthly*, DOE/EIA-0109(92/01-93/06); and *Weekly Petroleum Status Report*, DOE/EIA-0208(Various issues).

**Table 7. U.S. Petroleum Supply and Demand: Mid World Oil Price Case**  
(Million Barrels per Day, Except Closing Stocks)

	1992				1993				1994				Year		
	1st	2nd	3rd	4th	1st	2nd	3rd	4th	1st	2nd	3rd	4th	1992	1993	1994
<b>Supply</b>															
Crude Oil Supply															
Domestic Production <sup>a</sup>	7.37	7.21	7.03	7.09	6.98	6.84	6.83	6.83	6.82	6.67	6.59	6.60	7.17	6.87	6.67
Alaska	1.79	1.71	1.66	1.69	1.64	1.56	1.62	1.64	1.64	1.57	1.54	1.56	1.71	1.62	1.58
Lower 48	5.57	5.50	5.36	5.39	5.34	5.28	5.20	5.19	5.18	5.10	5.05	5.05	5.46	5.25	5.09
Net Imports (including SPR) <sup>b</sup>	5.38	6.04	6.41	6.14	6.18	6.55	6.71	6.66	6.35	6.82	7.01	6.97	5.99	6.53	6.79
Gross Imports (excluding SPR)	5.46	6.11	6.48	6.24	6.31	6.62	6.82	6.79	6.49	6.96	7.12	7.10	6.07	6.64	6.92
SPR Imports	0.00	0.01	0.01	0.02	0.01	0.05	0.00	0.00	0.00	0.00	0.00	0.00	0.01	0.01	0.00
Exports	0.08	0.08	0.08	0.11	0.14	0.11	0.11	0.13	0.14	0.13	0.11	0.13	0.09	0.12	0.13
Other SPR Supply	0.00	0.00	0.01	0.02	0.02	0.02	0.02	0.01	0.01	0.01	0.01	0.01	0.01	0.02	0.01
SPR Stock Withdrawn or Added (-)	0.00	-0.01	-0.02	-0.04	-0.03	-0.07	-0.02	-0.01	-0.01	-0.01	-0.01	-0.01	-0.02	-0.03	-0.01
Other Stock Withdrawn or Added (-)	-0.15	0.15	0.03	0.04	-0.21	-0.08	0.04	0.00	-0.02	0.04	-0.02	0.00	0.02	-0.06	0.00
Product Supplied and Losses	-0.02	-0.01	-0.01	-0.01	-0.01	-0.02	-0.02	-0.02	-0.02	-0.02	-0.02	-0.02	-0.01	-0.02	-0.02
Unaccounted-for Crude Oil	0.27	0.29	0.25	0.20	0.12	0.46	0.26	0.26	0.25	0.26	0.26	0.26	0.25	0.28	0.26
Total Crude Oil Supply	12.84	13.67	13.70	13.44	13.05	13.71	13.82	13.73	13.38	13.78	13.82	13.82	13.41	13.58	13.70
Other Supply															
NGL Production	1.69	1.70	1.66	1.74	1.85	1.74	1.65	1.69	1.69	1.62	1.62	1.67	1.70	1.73	1.65
Other Hydrocarbon and Alcohol Inputs	0.10	0.09	0.14	0.18	0.24	0.12	0.18	0.17	0.16	0.17	0.18	0.17	0.13	0.18	0.17
Crude Oil Product Supplied	0.02	0.01	0.01	0.01	0.01	0.02	0.02	0.02	0.02	0.02	0.02	0.02	0.01	0.02	0.02
Processing Gain	0.74	0.78	0.80	0.77	0.78	0.73	0.74	0.74	0.71	0.74	0.74	0.75	0.77	0.75	0.74
Net Product Imports <sup>c</sup>	0.86	0.99	1.04	0.88	1.00	1.34	1.50	1.30	1.49	1.72	1.72	1.51	0.94	1.29	1.61
Gross Product Imports <sup>c</sup>	1.75	1.83	1.81	1.82	1.76	2.20	2.32	2.22	2.37	2.56	2.53	2.42	1.80	2.13	2.47
Product Exports	0.89	0.85	0.77	0.94	0.76	0.86	0.82	0.92	0.88	0.84	0.82	0.92	0.86	0.84	0.86
Product Stock Withdrawn or Added (-) <sup>d</sup>	0.66	-0.49	-0.36	0.47	0.34	-0.56	-0.36	0.22	0.55	-0.51	-0.30	0.28	0.07	-0.09	0.00
Total Supply	16.91	16.74	16.98	17.49	17.27	17.10	17.56	17.87	18.01	17.55	17.80	18.21	17.03	17.45	17.89
<b>Demand</b>															
Motor Gasoline	6.99	7.34	7.46	7.28	7.09	7.52	7.64	7.45	7.24	7.60	7.73	7.54	7.27	7.43	7.53
Jet Fuel	1.41	1.40	1.49	1.52	1.48	1.44	1.51	1.54	1.48	1.43	1.51	1.53	1.45	1.49	1.49
Distillate Fuel Oil	3.22	2.82	2.77	3.10	3.47	2.98	2.83	3.25	3.59	3.07	2.94	3.37	2.98	3.13	3.24
Residual Fuel Oil	1.26	1.03	0.94	1.16	1.07	1.07	1.05	1.15	1.31	1.14	1.02	1.18	1.09	1.08	1.16
Other Oils <sup>e</sup>	4.03	4.15	4.33	4.43	4.16	4.10	4.53	4.49	4.38	4.30	4.60	4.59	4.24	4.32	4.47
Total Demand	16.91	16.74	16.98	17.49	17.27	17.10	17.56	17.87	18.01	17.55	17.80	18.21	17.03	17.45	17.89
Total Petroleum Net Imports	6.24	7.03	7.45	7.03	7.18	7.90	8.21	7.96	7.84	8.55	8.73	8.48	6.94	7.81	8.40
<b>Closing Stocks (million barrels)</b>															
Crude Oil (excluding SPR) <sup>f</sup>	339	325	322	318	337	344	340	340	342	338	340	340	318	340	340
Total Motor Gasoline	220	225	206	216	227	221	211	223	225	219	211	223	216	223	223
Finished Motor Gasoline	182	188	168	178	187	184	173	184	185	182	173	183	178	184	183
Blending Components	38	37	38	39	40	38	39	39	40	38	39	39	39	39	39
Jet Fuel	44	45	48	43	41	43	47	48	47	47	47	48	43	48	48
Distillate Fuel Oil	98	104	128	141	97	106	128	137	102	108	127	134	141	137	134
Residual Fuel Oil	41	41	47	43	41	44	45	48	42	44	45	48	43	48	48
Other Oils <sup>g</sup>	261	294	313	257	247	285	297	264	255	292	302	266	257	264	266
Total Stocks (excluding SPR)	1002	1034	1064	1017	1006	1063	1092	1072	1024	1067	1096	1071	1017	1072	1071
Crude Oil in SPR	569	570	571	575	578	584	585	587	588	589	590	591	575	587	591
Total Stocks (including SPR)	1571	1603	1636	1592	1584	1647	1678	1658	1612	1656	1686	1662	1592	1658	1662

<sup>a</sup>Includes lease condensate.

<sup>b</sup>Net imports equals gross imports plus SPR imports minus exports.

<sup>c</sup>Includes finished petroleum products, unfinished oils, gasoline blending components, and natural gas plant liquids for processing.

<sup>d</sup>Includes an estimate of minor product stock change based on monthly data.

<sup>e</sup>Includes crude oil product supplied, natural gas liquids, liquefied refinery gas, other liquids, and all finished petroleum products except motor gasoline, jet fuel, distillate, and residual fuel oil.

<sup>f</sup>Includes crude oil in transit to refineries.

<sup>g</sup>Includes stocks of all other oils such as aviation gasoline, kerosene, natural gas liquids (including ethane), aviation gasoline blending components, naphtha and other oils for petrochemical feedstock use, special naphthas, lube oils, wax, coke, asphalt, road oil, and miscellaneous oils.

SPR: Strategic Petroleum Reserve

NGL: Natural Gas Liquids

Notes: Minor discrepancies with other EIA published historical data are due to rounding. Historical data are printed in bold, forecasts are in italic. The forecasts were generated by simulation of the Short-Term Integrated Forecasting System.

Sources: Historical data: Energy Information Administration, *Petroleum Supply Annual 1992*, DOE/EIA-0340(92)/1; *Petroleum Supply Monthly*, DOE/EIA-0109(92/01-93/06); and *Weekly Petroleum Status Report*, DOE/EIA-0208(various issues).

**Table 8. U.S. Petroleum Supply and Demand: High World Oil Price Case**  
(Million Barrels per Day, Except Closing Stocks)

	1992				1993				1994				Year		
	1st	2nd	3rd	4th	1st	2nd	3rd	4th	1st	2nd	3rd	4th	1992	1993	1994
<b>Supply</b>															
Crude Oil Supply															
Domestic Production <sup>a</sup> .....	7.37	7.21	7.03	7.09	6.98	6.84	6.96	6.99	7.00	6.86	6.79	6.81	7.17	6.94	6.86
Alaska .....	1.79	1.71	1.66	1.69	1.64	1.56	1.66	1.68	1.68	1.61	1.58	1.59	1.71	1.63	1.61
Lower 48 .....	5.57	5.50	5.36	5.39	5.34	5.28	5.30	5.32	5.32	5.25	5.21	5.22	5.46	5.31	5.25
Net Imports (including SPR) <sup>b</sup> .....	5.38	6.04	6.41	6.14	6.18	6.55	6.58	6.44	6.11	6.62	6.81	6.77	5.99	6.44	6.58
Gross Imports (excluding SPR) .....	5.46	6.11	6.48	6.24	6.31	6.62	6.69	6.57	6.25	6.76	6.92	6.90	6.07	6.55	6.71
SPR Imports .....	0.00	0.01	0.01	0.02	0.01	0.05	0.00	0.00	0.00	0.00	0.00	0.00	0.01	0.01	0.00
Exports .....	0.08	0.08	0.08	0.11	0.14	0.11	0.11	0.13	0.14	0.13	0.11	0.13	0.09	0.12	0.13
Other SPR Supply .....	0.00	0.00	0.01	0.02	0.02	0.02	0.02	0.01	0.01	0.01	0.01	0.01	0.01	0.02	0.01
SPR Stock Withdrawn or Added (-) .....	0.00	-0.01	-0.02	-0.04	-0.03	-0.07	-0.02	-0.01	-0.01	-0.01	-0.01	-0.01	-0.02	-0.03	-0.01
Other Stock Withdrawn or Added (-) .....	-0.15	0.15	0.03	0.04	-0.21	-0.08	0.04	0.00	-0.02	0.04	-0.02	0.00	0.02	-0.06	0.00
Product Supplied and Losses .....	-0.02	-0.01	-0.01	-0.01	-0.01	-0.02	-0.02	-0.02	-0.02	-0.02	-0.02	-0.02	-0.01	-0.02	-0.02
Unaccounted-for Crude Oil .....	0.27	0.29	0.25	0.20	0.12	0.46	0.26	0.26	0.25	0.26	0.26	0.26	0.25	0.28	0.26
<b>Total Crude Oil Supply</b> .....	<b>12.84</b>	<b>13.67</b>	<b>13.70</b>	<b>13.44</b>	<b>13.05</b>	<b>13.71</b>	<b>13.82</b>	<b>13.67</b>	<b>13.32</b>	<b>13.77</b>	<b>13.82</b>	<b>13.82</b>	<b>13.41</b>	<b>13.57</b>	<b>13.68</b>
Other Supply															
NGL Production .....	1.69	1.70	1.66	1.74	1.85	1.74	1.65	1.69	1.69	1.63	1.62	1.67	1.70	1.73	1.65
Other Hydrocarbon and Alcohol Inputs .....	0.10	0.09	0.14	0.18	0.24	0.12	0.18	0.17	0.16	0.17	0.18	0.17	0.13	0.18	0.17
Crude Oil Product Supplied .....	0.02	0.01	0.01	0.01	0.01	0.02	0.02	0.02	0.02	0.02	0.02	0.02	0.01	0.02	0.02
Processing Gain .....	0.74	0.78	0.80	0.77	0.78	0.73	0.74	0.74	0.71	0.74	0.74	0.75	0.77	0.75	0.74
Net Product Imports <sup>c</sup> .....	0.86	0.99	1.04	0.88	1.00	1.34	1.44	1.27	1.50	1.66	1.61	1.43	0.94	1.26	1.55
Gross Product Imports <sup>c</sup> .....	1.75	1.83	1.81	1.82	1.76	2.20	2.26	2.19	2.39	2.49	2.43	2.35	1.80	2.10	2.42
Product Exports .....	0.89	0.85	0.77	0.94	0.76	0.86	0.82	0.92	0.88	0.84	0.82	0.92	0.86	0.84	0.86
Product Stock Withdrawn or Added (-) <sup>d</sup> ..	0.66	-0.49	-0.36	0.47	0.34	-0.56	-0.36	0.22	0.55	-0.51	-0.30	0.28	0.07	-0.09	0.00
<b>Total Supply</b> .....	<b>16.91</b>	<b>16.74</b>	<b>16.98</b>	<b>17.49</b>	<b>17.27</b>	<b>17.10</b>	<b>17.49</b>	<b>17.79</b>	<b>17.96</b>	<b>17.47</b>	<b>17.70</b>	<b>18.14</b>	<b>17.03</b>	<b>17.41</b>	<b>17.82</b>
<b>Demand</b>															
Motor Gasoline .....	6.99	7.34	7.46	7.28	7.09	7.52	7.61	7.42	7.19	7.55	7.69	7.50	7.27	7.41	7.48
Jet Fuel .....	1.41	1.40	1.49	1.52	1.48	1.44	1.51	1.54	1.48	1.43	1.50	1.53	1.45	1.49	1.48
Distillate Fuel Oil .....	3.22	2.82	2.77	3.10	3.47	2.98	2.82	3.24	3.59	3.07	2.93	3.36	2.98	3.12	3.24
Residual Fuel Oil .....	1.26	1.03	0.94	1.16	1.07	1.07	1.02	1.12	1.30	1.14	1.01	1.17	1.09	1.07	1.15
Other Oils <sup>e</sup> .....	4.03	4.15	4.33	4.43	4.16	4.10	4.53	4.48	4.39	4.29	4.57	4.58	4.24	4.32	4.46
<b>Total Demand</b> .....	<b>16.91</b>	<b>16.74</b>	<b>16.98</b>	<b>17.49</b>	<b>17.27</b>	<b>17.10</b>	<b>17.49</b>	<b>17.79</b>	<b>17.96</b>	<b>17.47</b>	<b>17.70</b>	<b>18.14</b>	<b>17.03</b>	<b>17.41</b>	<b>17.82</b>
<b>Total Petroleum Net Imports</b> .....	<b>6.24</b>	<b>7.03</b>	<b>7.45</b>	<b>7.03</b>	<b>7.18</b>	<b>7.89</b>	<b>8.01</b>	<b>7.71</b>	<b>7.61</b>	<b>8.28</b>	<b>8.42</b>	<b>8.20</b>	<b>6.94</b>	<b>7.70</b>	<b>8.13</b>
<b>Closing Stocks (million barrels)</b>															
Crude Oil (excluding SPR) <sup>f</sup> .....	339	325	322	318	337	344	340	340	342	338	340	340	318	340	340
Total Motor Gasoline .....	220	225	206	216	227	221	211	223	225	219	211	223	216	223	223
Finished Motor Gasoline .....	182	188	168	178	187	184	173	184	185	182	173	183	178	184	183
Blending Components .....	38	37	38	39	40	38	39	39	40	38	39	39	39	39	39
Jet Fuel .....	44	45	48	43	41	43	47	48	47	47	47	48	43	48	48
Distillate Fuel Oil .....	98	104	128	141	97	106	128	137	102	108	127	134	141	137	134
Residual Fuel Oil .....	41	41	47	43	41	44	45	48	42	44	45	48	43	48	48
Other Oils <sup>g</sup> .....	261	294	313	257	247	285	297	264	255	292	302	266	257	264	266
<b>Total Stocks (excluding SPR)</b> .....	<b>1002</b>	<b>1034</b>	<b>1064</b>	<b>1017</b>	<b>1006</b>	<b>1063</b>	<b>1092</b>	<b>1072</b>	<b>1024</b>	<b>1067</b>	<b>1096</b>	<b>1071</b>	<b>1017</b>	<b>1072</b>	<b>1071</b>
Crude Oil in SPR .....	569	570	571	575	578	584	585	587	588	589	590	591	575	587	591
<b>Total Stocks (including SPR)</b> .....	<b>1571</b>	<b>1603</b>	<b>1636</b>	<b>1592</b>	<b>1584</b>	<b>1647</b>	<b>1678</b>	<b>1658</b>	<b>1612</b>	<b>1656</b>	<b>1686</b>	<b>1662</b>	<b>1592</b>	<b>1658</b>	<b>1662</b>

<sup>a</sup>Includes lease condensate.

<sup>b</sup>Net imports equals gross imports plus SPR imports minus exports.

<sup>c</sup>Includes finished petroleum products, unfinished oils, gasoline blending components, and natural gas plant liquids for processing.

<sup>d</sup>Includes an estimate of minor product stock change based on monthly data.

<sup>e</sup>Includes crude oil product supplied, natural gas liquids, liquefied refinery gas, other liquids, and all finished petroleum products except motor gasoline, jet fuel, distillate, and residual fuel oil.

<sup>f</sup>Includes crude oil in transit to refineries.

<sup>g</sup>Includes stocks of all other oils such as aviation gasoline, kerosene, natural gas liquids (including ethane), aviation gasoline blending components, naphtha and other oils for petrochemical feedstock use, special naphthas, lube oils, wax, coke, asphalt, road oil, and miscellaneous oils.

SPR: Strategic Petroleum Reserve

NGL: Natural Gas Liquids

Notes: Minor discrepancies with other EIA published historical data are due to rounding. Historical data are printed in bold, forecasts are in italic. The forecasts were generated by simulation of the Short-Term Integrated Forecasting System.

Sources: Historical data: Energy Information Administration, *Petroleum Supply Annual 1992*, DOE/EIA-0340(92)/1; *Petroleum Supply Monthly*, DOE/EIA-0109(92/01-93/06); and *Weekly Petroleum Status Report*, DOE/EIA-0208(various issues).

**Table 9. U.S. Petroleum Demand Sensitivities**

	1993	1994
	Two Quarters <sup>a</sup>	Four Quarters <sup>a</sup>
<b>Economic Activity</b>		
Gross Domestic Product (billion 1987 dollars) . . . . .	5,061 - 5,132	5,135 - 5,341
Resulting Change in Petroleum Demand (million barrels per day) <sup>b</sup> 5 . . . . .	0.15	0.63
<b>Energy Prices</b>		
Imported Crude Oil (nominal dollars per barrel) <sup>c</sup> . . . . .	\$16 - \$20.50	\$16.25 - \$21.25
Resulting Change in Petroleum Demand (million barrels per day) <sup>b</sup>		
Due to Changes in the Crude Oil Price . . . . .	0.15	0.17
<b>Weather</b>		
Heating Degree Days per day <sup>d</sup> . . . . .	16.73 - 20.39	20.84 - 24.64
Resulting Change in Petroleum Demand (million barrels per day) . . . . .	0.46	0.86
Cooling Degree Days per day <sup>d</sup> . . . . .	7.60 - 9.07	5.51 - 6.53
Resulting Change in Petroleum Demand (million barrels per day) <sup>b</sup> . . . . .	0.05	0.39

<sup>a</sup>In the weather case, calculations apply to certain quarters only, as follows: for heating degree days, the average of first and fourth quarters only are used; for cooling degree days, the average of second and third quarters only are used.

<sup>b</sup>Ranges of petroleum product supplied associated with varying each determinant (or determinants), holding other things equal.

<sup>c</sup>Cost of imported crude oil to U.S. refiners.

<sup>d</sup>Heating and cooling degree days are U.S. 1980 population-weighted.

Source: Energy Information Administration, Office of Energy Markets and End Use, Energy Markets and Contingency Information Division, Short-Term Integrated Forecasting System.

**Table 10. Forecast Components for U.S. Crude Oil Production (Million Barrels per Day)**

	High Price Case	Low Price Case	Difference		
			Total	Uncertainty	Price Impact
<b>United States</b> . . . . .	6.81	6.36	0.45	0.15	0.30
<b>Lower 48 States</b> . . . . .	5.22	4.85	0.37	0.11	0.26
<b>Alaska</b> . . . . .	1.59	1.51	0.08	0.04	0.04

Note: Components provided are for the fourth quarter 1994 from Tables 6 and 8. Totals may not add to sum of components due to independent rounding.  
Source: Energy Information Administration, Office of Oil and Gas, Reserves and Natural Gas Division.

17.92  
17.99  
- 1.76 - 5.22

**Table 11. U.S. Natural Gas Supply and Demand: Mid World Oil Price Case  
(Trillion Cubic Feet)**

	1992				1993				1994				Year		
	1st	2nd	3rd	4th	1st	2nd	3rd	4th	1st	2nd	3rd	4th	1992	1993	1994
<b>Supply</b>															
Total Dry Gas Production <sup>a</sup>	<b>4.44</b>	<b>4.36</b>	<b>4.34</b>	<b>4.63</b>	<b>4.56</b>	<i>4.57</i>	<i>4.59</i>	<i>4.70</i>	<i>4.75</i>	<i>4.68</i>	<i>4.61</i>	<i>4.75</i>	<b>17.78</b>	<i>18.41</i>	<i>18.78</i>
Net Imports	<b>0.47</b>	<b>0.45</b>	<b>0.44</b>	<b>0.48</b>	<b>0.52</b>	<i>0.51</i>	<i>0.48</i>	<i>0.57</i>	<i>0.60</i>	<i>0.58</i>	<i>0.55</i>	<i>0.63</i>	<b>1.84</b>	<i>2.09</i>	<i>2.35</i>
Supplemental Gaseous Fuels	<b>0.03</b>	<b>0.03</b>	<b>0.03</b>	<b>0.03</b>	<b>0.04</b>	<i>0.03</i>	<i>0.02</i>	<i>0.03</i>	<i>0.03</i>	<i>0.03</i>	<i>0.02</i>	<i>0.03</i>	<b>0.12</b>	<i>0.12</i>	<i>0.11</i>
Total New Supply	<b>4.95</b>	<b>4.84</b>	<b>4.81</b>	<b>5.15</b>	<b>5.11</b>	<i>5.11</i>	<i>5.10</i>	<i>5.30</i>	<i>5.38</i>	<i>5.28</i>	<i>5.18</i>	<i>5.41</i>	<b>19.74</b>	<i>20.62</i>	<i>21.25</i>
<b>Underground Working Gas Storage</b>															
Opening	<b>2.82</b>	<b>1.55</b>	<b>2.15</b>	<b>3.05</b>	<b>2.60</b>	<i>1.23</i>	<i>2.11</i>	<i>3.11</i>	<i>2.76</i>	<i>1.43</i>	<i>2.15</i>	<i>3.09</i>	<b>2.82</b>	<i>2.60</i>	<i>2.76</i>
Closing	<b>1.55</b>	<b>2.15</b>	<b>3.05</b>	<b>2.60</b>	<b>1.23</b>	<i>2.11</i>	<i>3.11</i>	<i>2.76</i>	<i>1.43</i>	<i>2.15</i>	<i>3.09</i>	<i>2.74</i>	<b>2.60</b>	<i>2.76</i>	<i>2.74</i>
Net Withdrawals <sup>b</sup>	<b>1.19</b>	<b>-0.61</b>	<b>-0.88</b>	<b>0.47</b>	<b>1.41</b>	<i>-0.88</i>	<i>-1.00</i>	<i>0.34</i>	<i>1.33</i>	<i>-0.72</i>	<i>-0.94</i>	<i>0.35</i>	<b>0.18</b>	<i>-0.12</i>	<i>0.02</i>
Total Supply <sup>a</sup>	<b>6.14</b>	<b>4.23</b>	<b>3.93</b>	<b>5.62</b>	<b>6.52</b>	<i>4.23</i>	<i>4.10</i>	<i>5.64</i>	<i>6.71</i>	<i>4.56</i>	<i>4.24</i>	<i>5.76</i>	<b>19.92</b>	<i>20.50</i>	<i>21.27</i>
Balancing Item <sup>c</sup>	<b>0.11</b>	<b>0.19</b>	<b>-0.05</b>	<b>-0.42</b>	<b>0.01</b>	<i>0.37</i>	<i>-0.10</i>	<i>-0.41</i>	<i>0.02</i>	<i>0.26</i>	<i>-0.06</i>	<i>-0.38</i>	<b>-0.17</b>	<i>-0.14</i>	<i>-0.17</i>
Total Primary Supply <sup>a</sup>	<b>6.25</b>	<b>4.42</b>	<b>3.88</b>	<b>5.20</b>	<b>6.53</b>	<i>4.60</i>	<i>4.00</i>	<i>5.23</i>	<i>6.73</i>	<i>4.82</i>	<i>4.18</i>	<i>5.37</i>	<b>19.75</b>	<i>20.36</i>	<i>21.10</i>
<b>Demand</b>															
Lease and Plant Fuel	<b>0.29</b>	<b>0.28</b>	<b>0.28</b>	<b>0.30</b>	<b>0.30</b>	<i>0.28</i>	<i>0.28</i>	<i>0.30</i>	<i>0.31</i>	<i>0.30</i>	<i>0.30</i>	<i>0.31</i>	<b>1.15</b>	<i>1.16</i>	<i>1.21</i>
Pipeline Use	<b>0.22</b>	<b>0.16</b>	<b>0.14</b>	<b>0.18</b>	<b>0.23</b>	<i>0.18</i>	<i>0.16</i>	<i>0.19</i>	<i>0.22</i>	<i>0.18</i>	<i>0.16</i>	<i>0.19</i>	<b>0.70</b>	<i>0.76</i>	<i>0.74</i>
Residential	<b>2.06</b>	<b>0.85</b>	<b>0.40</b>	<b>1.40</b>	<b>2.30</b>	<i>0.98</i>	<i>0.43</i>	<i>1.32</i>	<i>2.28</i>	<i>0.97</i>	<i>0.44</i>	<i>1.34</i>	<b>4.70</b>	<i>5.03</i>	<i>5.03</i>
Commercial	<b>1.08</b>	<b>0.54</b>	<b>0.36</b>	<b>0.79</b>	<b>1.19</b>	<i>0.56</i>	<i>0.36</i>	<i>0.77</i>	<i>1.20</i>	<i>0.58</i>	<i>0.36</i>	<i>0.76</i>	<b>2.77</b>	<i>2.88</i>	<i>2.90</i>
Industrial	<b>2.05</b>	<b>1.87</b>	<b>1.80</b>	<b>1.95</b>	<b>1.99</b>	<i>1.89</i>	<i>1.83</i>	<i>2.02</i>	<i>2.18</i>	<i>2.02</i>	<i>1.95</i>	<i>2.10</i>	<b>7.66</b>	<i>7.73</i>	<i>8.26</i>
Electric Utilities	<b>0.55</b>	<b>0.73</b>	<b>0.91</b>	<b>0.58</b>	<b>0.52</b>	<i>0.72</i>	<i>0.93</i>	<i>0.63</i>	<i>0.53</i>	<i>0.78</i>	<i>0.97</i>	<i>0.68</i>	<b>2.77</b>	<i>2.80</i>	<i>2.96</i>
Total Demand	<b>6.25</b>	<b>4.42</b>	<b>3.88</b>	<b>5.20</b>	<b>6.53</b>	<i>4.60</i>	<i>4.00</i>	<i>5.23</i>	<i>6.73</i>	<i>4.82</i>	<i>4.18</i>	<i>5.37</i>	<b>19.75</b>	<i>20.36</i>	<i>21.10</i>

<sup>a</sup>Excludes nonhydrocarbon gases removed.

<sup>b</sup>Net withdrawals may vary from the difference between opening and closing stocks of gas in working gas storage due to book transfers between base and working gas categories, and other storage operator revisions of working gas inventories.

<sup>c</sup>The balancing item represents the difference between the sum of the components of natural gas supply and the sum of components of natural gas demand.

Notes: Minor discrepancies with other EIA published historical data are due to rounding. Historical data are printed in bold, forecasts are in italic. The forecasts were generated by simulation of the Short-Term Integrated Forecasting System.

Sources: Historical data: Energy Information Administration, *Monthly Energy Review*, DOE/EIA-0035(93/06); *Natural Gas Monthly*, DOE/EIA-0130(93/06); and *Electric Power Monthly*, DOE/EIA-0226(93/06).

13  
2000/11/13

3.167

**Table 12. U.S. Coal Supply and Demand: Mid World Oil Price Case**  
(Million Short Tons)

	1992				1993				1994				Year		
	1st	2nd	3rd	4th	1st	2nd	3rd	4th	1st	2nd	3rd	4th	1992	1993	1994
<b>Supply</b>															
Production .....	256.7	243.4	249.7	250.5	242.5	239.9	253.9	256.1	257.9	252.2	257.2	266.1	<b>1000.3</b>	992.4	1033.3
Primary Stock Levels <sup>d</sup>															
Opening .....	33.0	39.8	40.5	35.2	34.0	38.3	34.5	32.0	31.0	34.0	35.0	32.0	<b>33.0</b>	34.0	31.0
Closing .....	39.8	40.5	35.2	34.0	38.3	34.5	32.0	31.0	34.0	35.0	32.0	31.0	<b>34.0</b>	31.0	31.0
Net Withdrawals .....	-6.8	-0.7	5.3	1.2	-4.3	3.8	2.5	1.0	-3.0	-1.0	3.0	1.0	-1.0	3.0	0.0
Imports .....	0.7	1.0	0.9	1.2	1.2	1.1	0.9	0.9	0.8	0.9	0.9	0.9	<b>3.8</b>	4.1	3.4
Exports .....	24.7	27.0	26.5	24.3	18.9	23.0	24.7	24.3	22.7	25.4	26.1	25.8	<b>102.5</b>	90.9	100.1
Total Net Domestic Supply .....	225.8	216.8	229.4	228.6	220.5	221.8	232.6	233.7	233.0	226.6	235.0	242.1	<b>900.5</b>	908.5	936.7
Secondary Stock Levels <sup>e</sup>															
Opening .....	167.7	168.6	173.1	161.0	163.0	152.7	162.1	158.7	162.9	167.2	170.0	160.9	<b>167.7</b>	163.0	162.9
Closing .....	168.6	173.1	161.0	163.0	152.7	162.1	158.7	162.9	167.2	170.0	160.9	165.1	<b>163.0</b>	162.9	165.1
Net Withdrawals .....	-0.9	-4.5	12.1	-2.0	10.3	-9.5	3.4	-4.2	-4.2	-2.8	9.0	-4.2	4.7	0.0	-2.1
Total Supply .....	224.9	212.3	241.5	226.6	230.8	212.3	236.0	229.5	228.7	223.8	244.0	238.0	<b>905.3</b>	908.5	934.5
<b>Demand</b>															
Coke Plants .....	8.3	8.1	8.2	7.7	7.8	8.0	8.3	8.5	8.2	8.4	8.7	8.7	<b>32.4</b>	32.6	34.0
Electric Utilities .....	190.9	183.9	210.3	194.8	200.8	184.7	208.7	199.1	198.7	196.2	216.1	207.1	<b>779.8</b>	793.3	818.2
Retail and General Industry <sup>f</sup> .....	21.0	18.4	19.0	21.8	21.1	19.5	19.0	21.9	21.8	19.2	19.2	22.2	<b>80.4</b>	81.5	82.3
Total Demand .....	220.3	210.4	237.5	224.3	229.7	212.3	236.0	229.5	228.7	223.8	244.0	238.0	<b>892.6</b>	907.4	934.5
<b>Discrepancy<sup>g</sup></b> .....	4.6	1.8	4.0	2.3	1.1	0.0	0.0	0.0	0.0	0.0	0.0	0.0	<b>12.7</b>	1.1	0.0

<sup>d</sup>Primary stocks are held at the mines, preparation plants, and distribution points.

<sup>e</sup>Secondary stocks are held by users. Most of the secondary stocks are held by electric utilities.

<sup>f</sup>Synfuels plant demand in 1992 was 1.7 million tons per quarter, and is assumed to remain at that level in 1993 and 1994.

<sup>g</sup>Historical period discrepancy reflects an unaccounted-for shipper and receiver reporting difference.

Notes: Rows and columns may not add due to independent rounding. Zeros indicate amounts of less than 500,000 tons. Historical data are printed in bold, forecasts are in italic. The forecasts were generated by simulation of the Short-Term Integrated Forecasting System.

Sources: Historical data: Energy Information Administration, *Monthly Energy Review*, DOE/EIA-0035(93/06); and *Quarterly Coal Report*, DOE/EIA-0221(93/1Q).



**Table 13. U.S. Electricity Supply and Demand: Mid World Oil Price Case  
(Billion Kilowatthours)**

	1992				1993				1994				Year		
	1st	2nd	3rd	4th	1st	2nd	3rd	4th	1st	2nd	3rd	4th	1992	1993	1994
<b>Supply</b>															
Net Utility Generation															
Coal	<b>386.6</b>	<b>373.4</b>	<b>423.8</b>	<b>391.5</b>	<b>404.7</b>	<b>370.5</b>	<i>417.5</i>	<i>400.5</i>	<i>400.1</i>	<i>397.5</i>	<i>433.2</i>	<i>417.3</i>	<b>1575.3</b>	<i>1593.2</i>	<i>1648.1</i>
Petroleum	<b>27.3</b>	<b>18.7</b>	<b>22.3</b>	<b>20.2</b>	<b>22.7</b>	<b>23.0</b>	<i>27.0</i>	<i>22.0</i>	<i>27.2</i>	<i>30.4</i>	<i>29.1</i>	<i>23.8</i>	<b>88.5</b>	<i>94.8</i>	<i>110.5</i>
Natural Gas	<b>52.2</b>	<b>69.5</b>	<b>86.8</b>	<b>55.1</b>	<b>50.3</b>	<b>66.6</b>	<i>85.9</i>	<i>58.6</i>	<i>48.9</i>	<i>72.3</i>	<i>89.8</i>	<i>62.5</i>	<b>263.7</b>	<i>261.5</i>	<i>273.5</i>
Nuclear	<b>156.5</b>	<b>139.1</b>	<b>165.6</b>	<b>157.6</b>	<b>157.0</b>	<b>147.4</b>	<i>170.7</i>	<i>156.8</i>	<i>158.8</i>	<i>139.5</i>	<i>170.4</i>	<i>156.8</i>	<b>618.8</b>	<i>631.9</i>	<i>625.4</i>
Hydroelectric	<b>61.0</b>	<b>64.4</b>	<b>54.6</b>	<b>59.5</b>	<b>67.8</b>	<b>76.0</b>	<i>64.1</i>	<i>64.2</i>	<i>74.4</i>	<i>76.4</i>	<i>63.6</i>	<i>62.5</i>	<b>239.5</b>	<i>272.1</i>	<i>276.9</i>
Geothermal and Other <sup>a</sup>	<b>2.6</b>	<b>2.5</b>	<b>2.6</b>	<b>2.6</b>	<b>2.5</b>	<b>2.4</b>	<i>2.3</i>	<i>2.3</i>	<i>2.2</i>	<i>2.2</i>	<i>2.2</i>	<i>2.2</i>	<b>10.2</b>	<i>9.5</i>	<i>8.7</i>
Total Net Generation	<b>686.3</b>	<b>667.6</b>	<b>755.6</b>	<b>686.4</b>	<b>705.1</b>	<b>685.8</b>	<i>767.6</i>	<i>704.4</i>	<i>711.5</i>	<i>718.2</i>	<i>788.3</i>	<i>725.0</i>	<b>2795.9</b>	<i>2862.9</i>	<i>2943.1</i>
Net Imports	<b>4.8</b>	<b>5.5</b>	<b>8.4</b>	<b>8.1</b>	<b>6.2</b>	<b>6.4</b>	<i>9.0</i>	<i>8.4</i>	<i>9.3</i>	<i>8.7</i>	<i>9.9</i>	<i>8.7</i>	<b>26.8</b>	<i>30.0</i>	<i>36.6</i>
Utility Purchases from Nonutilities <sup>b</sup>	<b>40.6</b>	<b>38.5</b>	<b>42.8</b>	<b>40.3</b>	<b>43.2</b>	<b>41.0</b>	<i>45.6</i>	<i>42.9</i>	<i>45.8</i>	<i>43.4</i>	<i>48.3</i>	<i>45.5</i>	<b>162.2</b>	<i>172.7</i>	<i>183.1</i>
Total Supply	<b>731.6</b>	<b>711.6</b>	<b>806.9</b>	<b>734.8</b>	<b>754.5</b>	<b>733.1</b>	<i>822.2</i>	<i>755.8</i>	<i>766.6</i>	<i>770.4</i>	<i>846.6</i>	<i>779.2</i>	<b>2984.9</b>	<i>3065.6</i>	<i>3162.9</i>
Losses and Unaccounted <sup>c</sup>	<b>48.2</b>	<b>60.2</b>	<b>62.5</b>	<b>57.0</b>	<b>49.0</b>	<b>71.6</b>	<i>63.4</i>	<i>57.3</i>	<i>45.7</i>	<i>73.0</i>	<i>65.3</i>	<i>59.1</i>	<b>227.8</b>	<i>241.4</i>	<i>243.1</i>
<b>Demand</b>															
Residential	<b>247.0</b>	<b>203.7</b>	<b>256.2</b>	<b>227.2</b>	<b>260.2</b>	<b>221.6</b>	<i>263.8</i>	<i>233.6</i>	<i>260.8</i>	<i>227.8</i>	<i>269.9</i>	<i>239.3</i>	<b>934.0</b>	<i>979.2</i>	<i>997.7</i>
Commercial	<b>181.9</b>	<b>183.8</b>	<b>210.7</b>	<b>187.2</b>	<b>186.7</b>	<b>188.8</b>	<i>217.3</i>	<i>195.8</i>	<i>195.8</i>	<i>197.6</i>	<i>226.4</i>	<i>204.4</i>	<b>763.7</b>	<i>788.6</i>	<i>824.2</i>
Industrial	<b>231.8</b>	<b>240.7</b>	<b>252.4</b>	<b>240.5</b>	<b>234.6</b>	<b>241.7</b>	<i>252.7</i>	<i>245.3</i>	<i>240.7</i>	<i>248.8</i>	<i>260.1</i>	<i>252.4</i>	<b>965.4</b>	<i>974.3</i>	<i>1002.0</i>
Other	<b>22.8</b>	<b>23.1</b>	<b>25.2</b>	<b>23.0</b>	<b>24.0</b>	<b>23.5</b>	<i>25.0</i>	<i>23.7</i>	<i>23.7</i>	<i>23.3</i>	<i>25.0</i>	<i>23.9</i>	<b>94.0</b>	<i>96.1</i>	<i>95.9</i>
Total Demand	<b>683.4</b>	<b>651.4</b>	<b>744.4</b>	<b>677.8</b>	<b>705.5</b>	<b>675.6</b>	<i>758.8</i>	<i>698.4</i>	<i>720.9</i>	<i>697.4</i>	<i>781.3</i>	<i>720.1</i>	<b>2757.1</b>	<i>2838.3</i>	<i>2919.8</i>

<sup>a</sup>Other includes generation from wind, wood, waste, and solar sources.

<sup>b</sup>Electricity received from nonutility sources, including cogenerators and small power producers.

<sup>c</sup>Balancing item, mainly transmission and distribution losses.

Notes: Data for utility purchases from nonutilities, net utility imports, and losses and unaccounted are estimated for 1992. Minor discrepancies with other EIA published historical data are due to rounding. Historical data are printed in bold, forecasts are in italic. The forecasts were generated by simulation of the Short-Term Integrated Forecasting System.

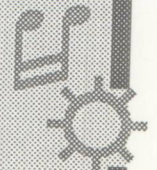
Sources: Historical data: Energy Information Administration, *Monthly Energy Review*, DOE/EIA-0035(93/06); and *Electric Power Monthly*, DOE/EIA-0226(93/06).

# Energy Education Resources

Kindergarten  
Through  
12th Grade

This brochure contains a listing of  
free or low-cost energy-related  
educational materials for educators  
and primary and secondary students.

Call the National Energy  
Information Center  
on (202)586-8800 to order  
your free copy.



Energy Information Administration  
U.S. Department of Energy  
Forrestal Building, EI-231  
Washington, DC 20585

SECOND-CLASS MAIL  
POSTAGE & FEES PAID  
U.S. DEPARTMENT OF ENERGY  
ISSN 0743-0604

OFFICIAL BUSINESS  
PENALTY FOR PRIVATE USE \$300

