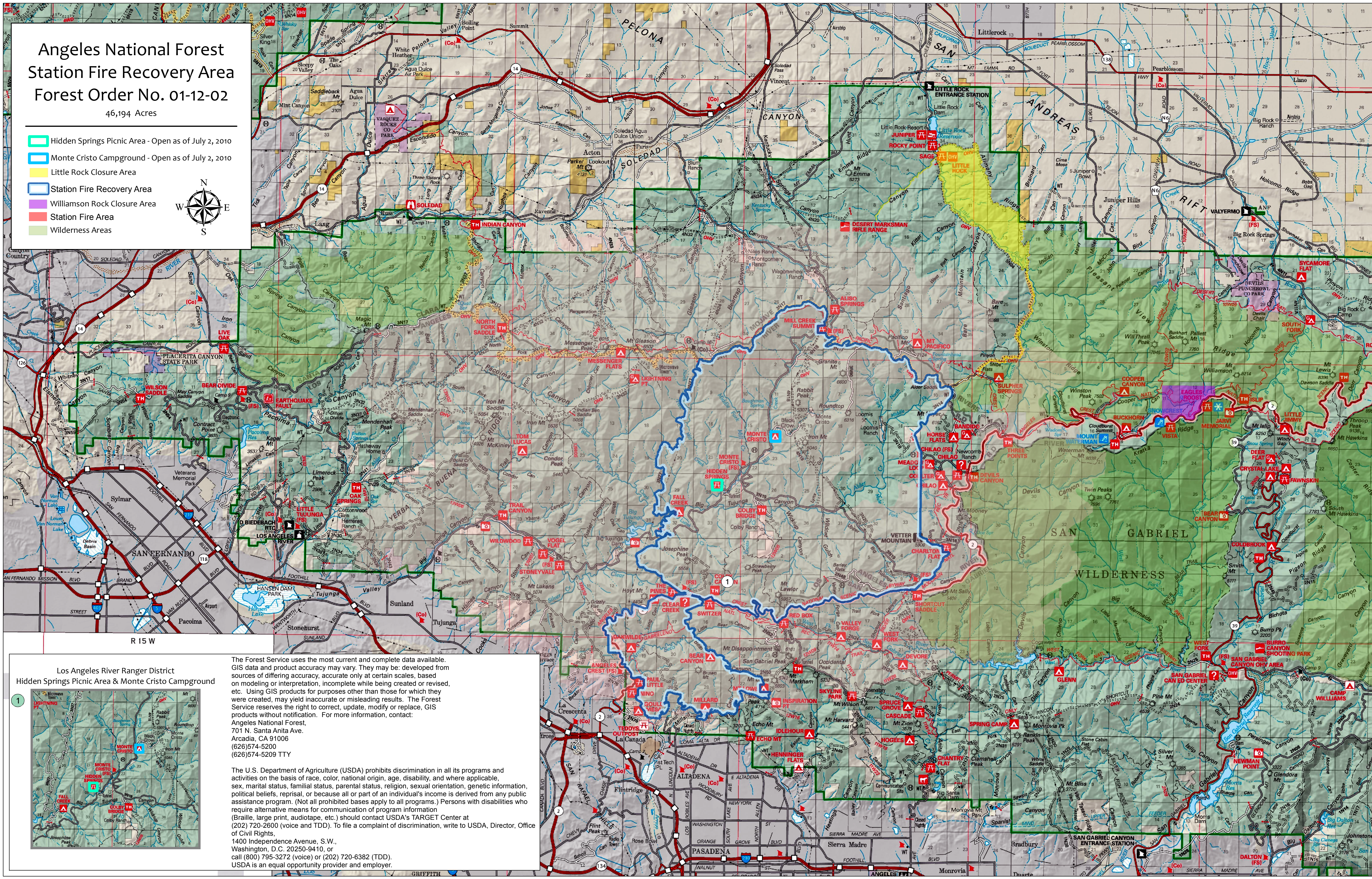
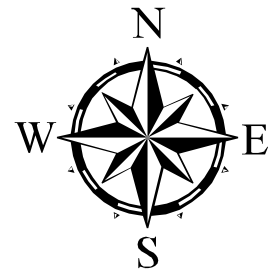


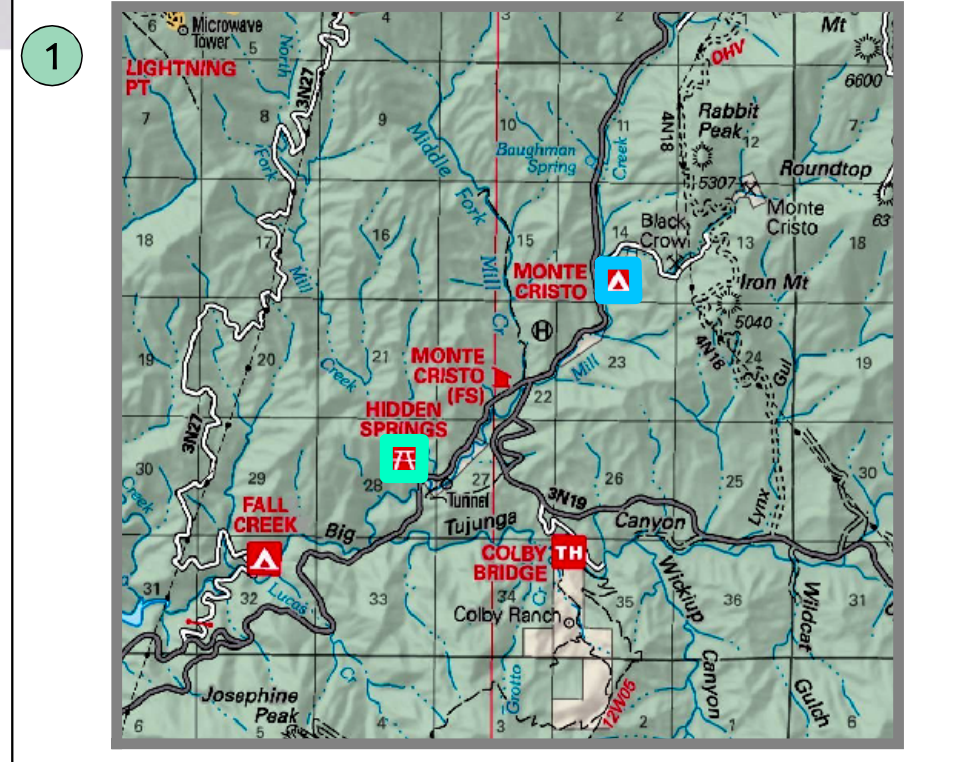
Angeles National Forest Station Fire Recovery Area Forest Order No. 01-12-02

46,194 Acres

- ▭ Hidden Springs Picnic Area - Open as of July 2, 2010
- ▭ Monte Cristo Campground - Open as of July 2, 2010
- ▭ Little Rock Closure Area
- ▭ Station Fire Recovery Area
- ▭ Williamson Rock Closure Area
- ▭ Station Fire Area
- ▭ Wilderness Areas



Los Angeles River Ranger District
Hidden Springs Picnic Area & Monte Cristo Campground



The Forest Service uses the most current and complete data available. GIS data and product accuracy may vary. They may be developed from sources of differing accuracy, accurate only at certain scales, based on modeling or interpretation, incomplete while being created or revised, etc. Using GIS products for purposes other than those for which they were created, may yield inaccurate or misleading results. The Forest Service reserves the right to correct, update, modify or replace, GIS products without notification. For more information, contact:
Angeles National Forest,
701 N. Santa Anita Ave.
Arcadia, CA 91006
(626)574-5200
(626)574-5209 TTY

The U.S. Department of Agriculture (USDA) prohibits discrimination in all its programs and activities on the basis of race, color, national origin, age, disability, and where applicable, sex, marital status, familial status, parental status, religion, sexual orientation, genetic information, political beliefs, reprisal, or because all or part of an individual's income is derived from any public assistance program. (Not all prohibited bases apply to all programs.) Persons with disabilities who require alternative means for communication of program information (Braille, large print, audiotape, etc.) should contact USDA's TARGET Center at (202) 720-2600 (voice and TDD). To file a complaint of discrimination, write to USDA, Director, Office of Civil Rights, 1400 Independence Avenue, S.W., Washington, D.C. 20250-9410, or call (800) 795-3272 (voice) or (202) 720-6382 (TDD). USDA is an equal opportunity provider and employer.