



MMWRTM

Morbidity and Mortality Weekly Report

Weekly

May 4, 2007 / Vol. 56 / No. 17

Vulvar Vaccinia Infection After Sexual Contact with a Military Smallpox Vaccinee — Alaska, 2006

On October 10, 2006, an otherwise healthy woman visited a public health clinic in Alaska after vaginal tears that she had first experienced 10 days before became increasingly painful. The patient reported having a new male sex partner during September 22–October 1, 2006. A viral swab specimen from a labial lesion of the woman was submitted to the Alaska State Virology Laboratory (ASVL) for viral culture. The viral isolate could not be identified initially and subsequently was sent to CDC on January 9, 2007, where the isolate was identified as a vaccine-strain vaccinia virus. After vaccinia was identified, investigators interviewed the woman more closely and learned that her new sex partner was a male U.S. military service member stationed at a local military base. Further investigation determined that the service member had been vaccinated for smallpox 3 days before beginning his relationship with the woman. This report describes the clinical evaluation of the woman and laboratory testing performed to identify the isolate. Health-care providers should be aware of the possibility of vaccinia infection in persons with clinically compatible genital lesions who have had recent contact with smallpox vaccinees.

Clinical Description

At the public health clinic on October 10, the woman told health-care providers that her partner consistently wore condoms during sex; however, a condom broke during vaginal intercourse on October 1. The two had no further contact after October 1. The patient told health-care providers she did not recall seeing penile ulcers or other unusual skin lesions on her partner. She had no history of genital ulcers or sexually transmitted infections and said that her vaginal tears did not result from sexual violence or abuse. She reported testing negative for human immunodeficiency virus approximately 3 months earlier. She had no fever, itching, or dysuria.

Clinical examination revealed two shallow ulcerations, one measuring 5 mm on the upper left labia minora and the other measuring 3 mm on the lower right labia minora, mild bilateral labial erythema and induration, and vaginal discharge. No inguinal lymphadenopathy was noted, and examination findings were normal for the cervix, uterus, adnexa, and anus. Tests for gonorrhea and *Chlamydia trachomatis* infection were negative; serologic tests for syphilis and hepatitis B virus were not performed. A viral swab specimen from the left labial lesion was submitted to ASVL for culture for possible herpes virus infection. A primary diagnosis of sexually transmitted infection was made but was not further characterized, and no specific treatment was administered pending viral culture results. A secondary diagnosis of vulvovaginal candidiasis was made, and the patient was treated with an over-the-counter medication.

After 2 days of increased redness, swelling, and burning of the labia minora, the woman returned to the clinic on October 12. The evaluating health-care provider diagnosed cellulitis, discontinued the over-the-counter preparation, and prescribed a 7-day course of oral cephalexin (500 mg by mouth, twice a day). No specimens were collected during the second clinic visit. The patient's labial redness, induration, and pain resolved, and the ulcers healed completely by October 19.

INSIDE

- 420 Prevalence of Actions to Control High Blood Pressure — 20 States, 2005
- 423 Projected State-Specific Increases in Self-Reported Doctor-Diagnosed Arthritis and Arthritis-Attributable Activity Limitations — United States, 2005–2030
- 426 Notices to Readers

The *MMWR* series of publications is published by the Coordinating Center for Health Information and Service, Centers for Disease Control and Prevention (CDC), U.S. Department of Health and Human Services, Atlanta, GA 30333.

Suggested Citation: Centers for Disease Control and Prevention. [Article title]. *MMWR* 2007;56:[inclusive page numbers].

Centers for Disease Control and Prevention

Julie L. Gerberding, MD, MPH
Director

Tanja Popovic, MD, PhD
Chief Science Officer

James W. Stephens, PhD
(Acting) Associate Director for Science

Steven L. Solomon, MD
Director, Coordinating Center for Health Information and Service

Jay M. Bernhardt, PhD, MPH
Director, National Center for Health Marketing

B. Kathleen Skipper, MA
(Acting) Director, Division of Health Information Dissemination (Proposed)

Editorial and Production Staff

Frederic E. Shaw, MD, JD
Editor, MMWR Series

Suzanne M. Hewitt, MPA
Managing Editor, MMWR Series

Douglas W. Weatherwax
(Acting) Lead Technical Writer-Editor

Catherine H. Bricker, MS
Jude C. Rutledge
Writers-Editors

Beverly J. Holland
Lead Visual Information Specialist

Lynda G. Cupell
Malbea A. LaPete
Visual Information Specialists

Quang M. Doan, MBA
Erica R. Shaver
Information Technology Specialists

Editorial Board

William L. Roper, MD, MPH, Chapel Hill, NC, Chairman

Virginia A. Caine, MD, Indianapolis, IN

David W. Fleming, MD, Seattle, WA

William E. Halperin, MD, DrPH, MPH, Newark, NJ

Margaret A. Hamburg, MD, Washington, DC

King K. Holmes, MD, PhD, Seattle, WA

Deborah Holtzman, PhD, Atlanta, GA

John K. Iglehart, Bethesda, MD

Dennis G. Maki, MD, Madison, WI

Sue Mallonee, MPH, Oklahoma City, OK

Stanley A. Plotkin, MD, Doylestown, PA

Patricia Quinlisk, MD, MPH, Des Moines, IA

Patrick L. Remington, MD, MPH, Madison, WI

Barbara K. Rimer, DrPH, Chapel Hill, NC

John V. Rullan, MD, MPH, San Juan, PR

Anne Schuchat, MD, Atlanta, GA

Dixie E. Snider, MD, MPH, Atlanta, GA

John W. Ward, MD, Atlanta, GA

Laboratory Findings

At ASVL, viral cytopathic effect was observed in viral culture cells from the specimen collected from the woman on October 10; however, immunofluorescent antibody staining was negative for herpes simplex virus (HSV). During late October to November, the viral isolate was successfully passaged into two additional viral culture cell lines, but subsequent staining of the viral isolate also was negative for HSV and cytomegalovirus. The viral isolate was submitted on November 22 to a second reference laboratory, where it remained unidentified 1 month later.

On January 9, 2007, ASVL sent the unidentified viral isolate to CDC, where the isolate was evaluated using two pathogen-discovery strategies: a pan-herpes virus polymerase chain reaction (PCR) test and a deoxyribonuclease sequence-independent, single-primer amplification (DNase-SISPA) sequencing method,* in which a specimen is treated with DNase, followed by nucleic acid extraction, random amplification, restriction enzyme digestion, and SISPA of the restriction fragments. Although the pan-herpes virus PCR assay was negative, the DNase-SISPA method produced unique and prominent DNA fragments in the unknown isolate but not in the control cells. The PCR product containing these fragments was cloned and sequenced. Eight of nine sequenced clones of the bands matched vaccinia virus sequences. Additional PCR testing by the CDC Poxvirus Laboratory identified the isolate as being consistent with a vaccine-strain vaccinia virus. On January 30, 2007, CDC notified ASVL of the results, which were immediately relayed to the Alaska Section of Epidemiology.

Epidemiologic Investigation

After receiving notification of the laboratory result, Alaska state health officials interviewed the patient and learned that she lived alone and had never been vaccinated against smallpox. However, the patient told investigators that her recent sex partner was a U.S. service member stationed at a local military base and that he had been her only sex partner during the period from 1 month before her infection until the time her ulcers were completely healed (September 1–October 19). The patient also told investigators that her sexual contact with her recent partner had included manual stimulation in addition to vaginal intercourse. The patient did not remember seeing bandages on her partner and did not know whether he had received any recent vaccinations.

The service member was deployed overseas in late October and was not available for interview. According to the preventive medicine officer at the military base where the service

* Reyes GR, Kim JP. Sequence-independent, single-primer amplification (SISPA) of complex DNA populations. *Mol Cell Probes* 1991;5:473–81.

member was stationed, the service member had reported no underlying skin disorders or other contraindications to vaccination. He had received smallpox vaccination on September 19, 2006, after first receiving instruction on care of the vaccination site and proper hand hygiene. Investigators identified no additional transmission of the virus from the vaccinee and no transmission from the woman to other persons, including health-care providers who had examined her.

Reported by: J McLaughlin, MD, Alaska Section of Epidemiology; T Schmidt, MS, M Westcott, Alaska State Virology Laboratory. J Baumbach, MD, New Mexico Dept of Health. JP Lofgren, MD, Alabama Dept of Public Health. S Gerber, MD, Chicago Dept of Public Health. R Panares, MD, Hammond City Health Dept; W Staggs, MS, Indiana State Dept of Health. L Collins, MD, Walter Reed National Vaccine Healthcare Center, Silver Spring, Maryland. S Tong, PhD, YLi, MS, WTan, PhD, E Mar, PhD, S Ruone, MS, A LaMonte-Fowlkes, MPH, L Anderson, MD, Div of Viral Diseases, National Center for Immunization and Respiratory Diseases; M Reynolds, PhD, YLi, PhD, G Trindade, PhD, V Olson, PhD, I Damon, MD, PhD, Div of Viral and Rickettsial Diseases, National Center for Zoonotic, Vector-Borne and Enteric Diseases; R Fagan, MD, E Lederman, MD, EIS officers, CDC.

Editorial Note: This case of vulvar vaccinia was transmitted by a sex partner who had recently received smallpox vaccination. Unintentional transfer of vaccinia virus can occur from a vaccination site to a second site on the vaccinee (inadvertent autoinoculation) or to a close contact (contact transmission) (1). The most frequently reported sites of vaccinia infections caused by unintentional transfer are the face, nose, mouth, lips, genitalia, anus, and eye (1). To prevent transfers, health-care providers should educate vaccinees regarding proper hand washing after bandage changes or other contact with the vaccination site (2). This general recommendation remains the most effective way to prevent genital vaccinia infections. Persons with any new genital lesion, including lesions suspected to have been caused by vaccinia infection, should avoid sexual contact and consult a health-care provider.

Vulvar vaccinia infections often are characterized by painful labial ulcers and/or vesicles, vulvar edema and pruritus, vaginal discharge, and occasionally by vaginitis and tender bilateral inguinal lymphadenopathy (3–9). Most reports of vulvar vaccinia were published before cessation of widespread smallpox vaccination programs (7); however, in addition to the case described in this report, laboratory-confirmed cases of vulvar vaccinia after sexual contact with vaccinated military personnel have been reported in New York and Texas since the U.S. military resumed smallpox vaccination in 2002 (8,9). Similar to the case described in this report, herpes virus infection was initially suspected in the New York case, and information regarding

contact with a recent smallpox vaccinee was not disclosed until after laboratory evidence of vaccinia virus had been detected.

Laboratory confirmation of orthopoxvirus infections, including vaccinia, requires test methods that are not commercially available. However, tests for orthopoxvirus infections are available at many state and local health departments via the Laboratory Response Network, and confirmatory (i.e., species-specific) testing is available at CDC. In the case described in this report, initial testing of clinical specimens for presumed herpes virus infection at ASVL was inconclusive. In the absence of critical information (i.e., patient contact with a recent smallpox vaccinee) to guide testing of the isolate, ASVL forwarded the specimen to CDC. Identification of vaccinia as the etiologic agent illustrates the power of using multiple new tools for identifying pathogens in patients with a disease of unknown etiology.

Since March 8, 2007, CDC and the U.S. Department of Defense have received reports of four instances of nongenital contact vaccinia associated with recently vaccinated service members, including two cases from Indiana and one case each from Alabama and New Mexico. Health-care providers and public health professionals should ask about any contact with recent smallpox vaccinees when evaluating patients with vesicular lesions compatible with vaccinia. Early identification of such contact can guide diagnostic tests, allow for timely contact tracing and clinical intervention, and facilitate prompt patient counseling to prevent further transmission of the virus.

Acknowledgments

The findings in this report are based, in part, on contributions by the examining health-care provider and the preventive medicine officer at the military base.

References

1. CDC. Surveillance guidelines for smallpox vaccine (vaccinia) adverse reactions. MMWR 2006;55(No. RR-1).
2. CDC. Smallpox vaccination and adverse reactions: guidance for clinicians. MMWR 2003;52(No. RR-4).
3. Humphrey DC. Localized accidental vaccinia of the vulva. Report of 3 cases and a review of the world literature. Am J Obstet Gynecol 1963;86:460–9.
4. Andreev VC, Lachapelle JM, Rook AJ. An outbreak of accidental vaccinia in a family. Dermatol Int 1969;8:5–9.
5. Kanra G, Sezer VM, Gurses N, Secmeer G, Oran O. Accidental vaccinia vulva vaginitis. Cutis 1980;26:267–8.
6. Haim S. Accidental vaccinia of the vulva. Cutis 1976;17:308–9.
7. Sepkowitz KA. How contagious is vaccinia? N Engl J Med 2003; 348:439–46.
8. Egan C, Kelly CD, Rush-Wilson K, et al. Laboratory-confirmed transmission of vaccinia virus infection through sexual contact with a military vaccinee. J Clin Microbiol 2004;42:5409–11.
9. Lorich MF, Smith SB, Bessinger GT, Olivere JW. Conjugal transfer vaccinia. J Am Acad Dermatol 2004;51:460–2.

Prevalence of Actions to Control High Blood Pressure — 20 States, 2005

High blood pressure (HBP) increases the risk for heart disease and stroke, the first and third leading causes of death in the United States, respectively (1). The association between HBP and cardiovascular disease is independent of other risk factors (2). Nearly 30% of the U.S. adult population had HBP* during 2001–2004, according to the National Health and Nutrition Examination Survey (NHANES), and the prevalence has increased compared with 1988–1994 NHANES data (3,4). Although HBP is easily detectable and can be controlled with treatment, the condition is not controlled (i.e., systolic blood pressure <140 mm Hg and diastolic pressure <90 mm Hg) in approximately 70% of persons (3). A *Healthy People 2010* objective (objective 12-11) is to increase the proportion of adults with HBP who are taking action to help control their blood pressure (5). To assess the prevalence of self-reported HBP and actions to control HBP, CDC analyzed 2005 data from an optional module in the Behavioral Risk Factor Surveillance System (BRFSS) in the 20 states that participated. The results indicated that although nearly all adults with HBP in the 20 states were taking some action to control their blood pressure, some persons can take additional actions to control their HBP, if indicated, including dietary changes, exercise, and taking prescribed medication.

BRFSS is a state-based, random-digit-dialed telephone survey of the U.S. civilian, noninstitutionalized population aged ≥18 years. The survey is administered in all 50 states, the District of Columbia (DC), and three U.S. territories (Guam, Puerto Rico, and the U.S. Virgin Islands). During 2005, a total of 24,447 of 101,574 respondents in 20 states responded “yes” to the following question: “Were you told on two or more different visits to a doctor or other health professional that you had high blood pressure?” Women who reported HBP only during pregnancy were not categorized as having HBP. Respondents also were asked the following five questions about actions they were currently taking to control their HBP: “Are you changing your eating habits to help lower or control your high blood pressure?” “Are you cutting down on salt to help lower or control your high blood pressure?” “Are you reducing alcohol use to help lower or control your high blood pressure?” “Are you exercising to help lower or control your high blood pressure?” “Are you currently taking medicine for your high blood pressure?” The median response rate for the 20 states was 51.0% (range: 34.6%–66.7%). Data were weighted to 2005 state population estimates. Prevalence estimates and 95% confidence intervals were calculated.

* HBP in NHANES was defined as systolic blood pressure of ≥140 mm Hg, diastolic blood pressure of ≥90 mm Hg, or taking antihypertensive medication.

The age-adjusted prevalence of self-reported HBP was 19.4% (Table 1) for the 20 states combined. Self-reported HBP increased by age group, and the age-adjusted prevalence was highest among non-Hispanic blacks (27.2%). Among the 20 states, self-reported HBP tended to be highest in southern states, with Mississippi (25.5%), West Virginia (23.5%), Alabama (23.2%), Louisiana (22.1%), and Arkansas (21.9%) having the highest age-adjusted prevalence.

TABLE 1. Number and percentage of respondents told on two or more visits to a health professional that they have high blood pressure (HBP), by selected characteristics — Behavioral Risk Factor Surveillance System, 20 states, 2005

| Characteristic | Total no. of respondents | % of respondents reporting HBP diagnosis* | 95% CI† |
|--------------------------------------|--------------------------|---|------------------|
| Age group (yrs) | | | |
| 18–24 | 5,023 | 2.4 | 1.7–3.1 |
| 25–44 | 31,723 | 8.3 | 7.8–8.7 |
| 45–64 | 39,603 | 27.7 | 27.0–28.4 |
| ≥65 | 25,225 | 44.2 | 43.2–45.1 |
| Sex | | | |
| Men | 38,177 | 19.5 | 19.0–20.1 |
| Women | 63,397 | 19.2 | 18.7–19.6 |
| Race/Ethnicity | | | |
| White, non-Hispanic | 80,535 | 18.6 | 18.3–19.0 |
| Black, non-Hispanic | 8,861 | 27.2 | 26.0–28.3 |
| Hispanic§ | 6,432 | 18.0 | 16.5–19.6 |
| Asian | 2,207 | 14.7 | 12.3–17.1 |
| Native Hawaiian/ Pacific Islander | 496 | 12.7 | 7.9–17.5 |
| American Indian/ Alaska Native | 1,298 | 25.2 | 20.4–30.1 |
| Other | 834 | 16.3 | 12.8–19.9 |
| State | | | |
| Alabama | 3,095 | 23.2 | 21.8–24.7 |
| Arizona | 4,565 | 16.4 | 14.8–18.0 |
| Arkansas | 5,140 | 21.9 | 20.8–23.1 |
| Connecticut | 5,070 | 16.6 | 15.6–17.7 |
| Florida | 7,953 | 19.0 | 17.9–20.0 |
| Georgia | 5,897 | 21.2 | 20.0–22.4 |
| Hawaii | 3,127 | 15.7 | 14.1–17.4 |
| Kansas | 4,241 | 18.3 | 17.1–19.4 |
| Kentucky | 6,391 | 20.9 | 19.7–22.1 |
| Louisiana | 2,869 | 22.1 | 20.5–23.6 |
| Maryland | 4,234 | 20.0 | 18.7–21.3 |
| Minnesota | 2,810 | 17.0 | 15.7–18.3 |
| Mississippi | 4,294 | 25.5 | 24.2–26.9 |
| Montana | 4,846 | 16.3 | 15.1–17.4 |
| Nebraska | 4,037 | 19.1 | 17.8–20.5 |
| New Jersey | 13,039 | 17.9 | 17.1–18.6 |
| New York | 7,508 | 19.4 | 18.4–20.4 |
| North Dakota | 3,899 | 17.2 | 16.1–18.3 |
| Utah | 5,056 | 16.0 | 15.0–17.1 |
| West Virginia | 3,503 | 23.5 | 22.1–24.9 |
| Total | 101,574 | 19.4 | 19.1–19.8 |

* Weighted percentages, except for age groups, are age standardized to the 2000 U.S. standard population.

† Confidence interval.

§ Might be of any race.

Approximately 98.1% of adults with self-reported HBP reported taking at least one action to lower or control their blood pressure, and a majority of respondents reported taking each of the five actions: 70.9% changed their eating habits, 79.5% decreased use of salt or did not use salt, 79.2%

reduced consumption of alcohol or did not drink alcohol, 68.6% exercised, and 73.4% took antihypertensive medication (Table 2). Women were more likely than men to report changing eating habits and reducing consumption of alcohol or not drinking alcohol. Reducing use of salt or not using salt

TABLE 2. Number and percentage of respondents taking selected actions* to control high blood pressure (HBP) among adults told on two or more visits to a health professional that they have HBP, by selected characteristics — Behavioral Risk Factor Surveillance System, 20 states, 2005

| Characteristic | Total no. of respondents [†] | Action taken to control HBP | | | | | | | | | |
|--------------------------------------|---------------------------------------|-----------------------------|---------------------|-----------------------------------|------------------|---|------------------|-------------|------------------|------------------------------------|------------------|
| | | Changing eating habits | | Reducing use of or not using salt | | Reducing use of or not drinking alcohol | | Exercising | | Taking antihypertensive medication | |
| | | % [§] | 95% CI [¶] | % | 95% CI | % | 95% CI | % | 95% CI | % | 95% CI |
| Age group (yrs) | | | | | | | | | | | |
| 18–24 | 129 | 47.2 | 32.3–62.1 | 68.2 | 52.4–84.0 | 77.2 | 66.8–87.6 | 65.9 | 50.1–81.8 | 35.3 | 20.4–50.1 |
| 25–44 | 2,694 | 75.7 | 73.3–78.2 | 78.9 | 76.1–81.6 | 79.9 | 77.6–82.1 | 70.9 | 68.4–73.4 | 64.6 | 61.7–67.6 |
| 45–64 | 10,889 | 76.7 | 75.5–78.0 | 82.1 | 80.8–83.4 | 79.6 | 78.4–80.9 | 68.6 | 67.2–70.0 | 88.7 | 87.8–89.6 |
| ≥65 | 10,735 | 67.1 | 65.7–68.5 | 85.0 | 83.8–86.1 | 78.6 | 77.3–79.8 | 65.2 | 63.8–66.6 | 96.2 | 95.6–96.8 |
| Sex | | | | | | | | | | | |
| Men | 9,077 | 66.7 | 63.8–69.6 | 77.0 | 73.6–80.3 | 75.5 | 73.2–77.8 | 68.8 | 65.4–72.2 | 71.1 | 67.7–74.5 |
| Women | 15,370 | 76.4 | 74.2–78.6 | 82.0 | 79.3–84.7 | 82.5 | 80.2–84.8 | 69.0 | 66.6–71.5 | 76.3 | 73.8–78.8 |
| Race/Ethnicity | | | | | | | | | | | |
| White, non-Hispanic | 19,705 | 69.5 | 66.8–72.1 | 79.0 | 76.7–81.2 | 76.6 | 74.6–78.6 | 69.4 | 67.2–71.5 | 75.9 | 73.1–78.7 |
| Black, non-Hispanic | 2,769 | 77.5 | 72.7–82.3 | 90.0 | 86.5–93.5 | 86.9 | 83.2–90.5 | 67.5 | 62.2–72.7 | 75.2 | 71.2–79.2 |
| Hispanic** | 1,045 | 70.7 | 63.5–77.9 | 73.9 | 66.8–80.9 | 84.3 | 79.0–89.5 | 66.8 | 60.1–73.5 | 62.5 | 57.1–67.8 |
| Asian | 374 | 73.1 | 61.2–85.0 | 80.9 | 69.1–92.8 | 79.3 | 69.0–89.6 | 72.0 | 60.9–83.0 | 77.4 | 65.4–89.4 |
| Native Hawaiian/ Pacific Islander | 89 | 65.9 | 47.3–84.5 | 78.5 | 57.0–100.0 | 74.5 | 63.6–85.5 | 77.1 | 62.6–91.5 | 63.1 | 52.5–73.8 |
| American Indian/ Alaska Native | 303 | 63.8 | 53.5–74.0 | 76.8 | 69.6–83.9 | 79.6 | 71.5–87.7 | 76.0 | 66.8–85.1 | 61.3 | 49.2–73.4 |
| Other | 162 | 75.3 | 57.1–93.6 | 71.5 | 52.9–90.0 | 82.5 | 70.2–94.8 | 74.8 | 62.1–87.5 | 75.0 | 57.1–92.9 |
| State | | | | | | | | | | | |
| Alabama | 912 | 76.1 | 71.9–80.3 | —†† | — | 88.3 | 85.5–91.0 | 66.7 | 62.3–71.1 | 81.4 | 72.8–90.1 |
| Arizona | 993 | 70.2 | 62.1–78.3 | 73.7 | 69.1–78.2 | 77.0 | 68.6–85.4 | 73.0 | 64.7–81.4 | 68.2 | 59.2–77.1 |
| Arkansas | 1,407 | 64.4 | 57.7–71.0 | 75.8 | 69.4–82.1 | 83.0 | 77.2–88.9 | 72.1 | 66.1–78.0 | 72.3 | 65.8–78.8 |
| Connecticut | 1,065 | 76.1 | 71.3–80.8 | 82.2 | 77.6–86.7 | 70.3 | 64.4–76.1 | 74.0 | 69.0–79.0 | 69.9 | 65.1–74.7 |
| Florida | 2,026 | 73.5 | 66.1–80.8 | 83.2 | 79.3–87.0 | 81.3 | 77.8–84.7 | 74.6 | 71.2–77.9 | 73.7 | 65.7–81.7 |
| Georgia | 1,568 | 70.6 | 65.6–75.7 | —†† | — | 79.1 | 73.1–85.0 | 65.8 | 59.6–71.9 | 74.0 | 69.4–78.6 |
| Hawaii | 558 | 74.5 | 65.6–83.4 | 83.8 | 77.8–89.8 | 71.6 | 63.1–80.1 | 63.2 | 53.8–72.6 | 76.5 | 66.6–86.4 |
| Kansas | 1,000 | 68.6 | 61.1–76.0 | 75.8 | 67.0–84.5 | 83.4 | 76.4–90.5 | 79.9 | 76.5–83.2 | 76.0 | 67.1–84.8 |
| Kentucky | 1,771 | 74.4 | 69.1–79.8 | 81.4 | 76.3–86.5 | 80.3 | 75.6–84.9 | 59.9 | 54.7–65.1 | 78.3 | 73.4–83.2 |
| Louisiana | 739 | 75.9 | 69.9–81.9 | 81.4 | 75.9–87.0 | 85.0 | 80.2–89.7 | 69.7 | 63.6–75.8 | 85.8 | 80.4–91.2 |
| Maryland | 989 | 75.3 | 68.4–82.2 | 81.1 | 76.5–85.8 | 78.5 | 73.8–83.1 | 70.8 | 63.7–77.8 | 76.7 | 69.6–83.8 |
| Minnesota | 603 | 63.9 | 58.9–68.8 | 69.5 | 64.4–74.5 | 61.4 | 56.0–66.7 | 60.8 | 55.3–66.2 | 78.9 | 73.2–84.5 |
| Mississippi | 1,338 | 80.5 | 77.6–83.4 | —†† | — | 75.5 | 69.4–81.6 | 69.5 | 66.1–72.9 | 81.0 | 74.5–87.6 |
| Montana | 1,002 | 59.7 | 53.5–65.8 | 73.1 | 64.8–81.5 | 69.5 | 60.8–78.2 | 76.7 | 71.6–81.7 | 58.1 | 52.9–63.3 |
| Nebraska | 1,012 | 65.2 | 56.7–73.7 | 82.8 | 78.5–87.0 | 75.6 | 67.8–83.3 | 66.5 | 58.0–75.1 | 72.7 | 64.1–81.2 |
| New Jersey | 2,978 | 69.3 | 64.4–74.2 | 80.9 | 76.2–85.6 | 75.4 | 70.5–80.2 | 70.0 | 65.7–74.2 | 71.7 | 67.5–75.8 |
| New York | 1,677 | 66.8 | 60.4–73.2 | 77.5 | 70.5–84.6 | 79.2 | 75.0–83.3 | 65.8 | 60.2–71.4 | 66.2 | 60.9–71.5 |
| North Dakota | 851 | 65.5 | 57.9–73.0 | 76.9 | 71.2–82.5 | 74.3 | 66.7–81.9 | 75.4 | 69.7–81.0 | 74.3 | 68.5–80.2 |
| Utah | 915 | 69.1 | 63.0–75.3 | 73.7 | 68.4–78.9 | 85.1 | 80.0–90.2 | 75.5 | 69.9–81.1 | 68.9 | 62.8–74.9 |
| West Virginia | 1,043 | 68.2 | 60.0–76.4 | 75.4 | 67.7–83.2 | 84.5 | 77.2–91.9 | 57.6 | 49.3–65.9 | 70.9 | 67.1–74.7 |
| Total | 24,447 | 70.9 | 68.7–73.1 | 79.5 | 77.1–81.9 | 79.2 | 77.6–80.9 | 68.6 | 66.3–70.9 | 73.4 | 71.2–75.7 |

* Respondents were asked the following five questions: “Are you changing your eating habits to help lower or control your high blood pressure?” “Are you cutting down on salt to help lower or control your high blood pressure?” “Are you reducing alcohol use to help lower or control your high blood pressure?” “Are you exercising to help lower or control your high blood pressure?” “Are you currently taking medicine for your high blood pressure?”

† The number of respondents in the salt-use column is lower because of missing values for three states.

§ Weighted percentages, except for age groups, are age standardized to the 2000 U.S. standard population.

¶ Confidence interval.

** Might be of any race.

†† Data not comparable for this question because of different response categories.

and taking antihypertensive medicine increased with age. A higher proportion of non-Hispanic blacks (90.0%) compared with other racial/ethnic groups reported reducing use of salt or not using salt.

The proportion of respondents with self-reported HBP who took each action varied by state. The percentage of adults who reported changing eating habits ranged from 59.7% (Montana) to 80.5% (Mississippi); the percentage who reduced use of salt or did not use salt ranged from 69.5% (Minnesota) to 83.8% (Hawaii); the percentage who reduced alcohol consumption or did not drink alcohol ranged from 61.4% (Minnesota) to 88.3% (Alabama); the percentage who exercised ranged from 57.6% (West Virginia) to 79.9% (Kansas); and the percentage who took antihypertensive medication ranged from 58.1% (Montana) to 85.8% (Louisiana).

Reported by: *CH Denny, PhD, KJ Greenlund, PhD, C Ayala, PhD, NL Keenan, PhD, JB Croft, PhD, Div for Heart Disease and Stroke Prevention, National Center for Chronic Disease Prevention and Health Promotion, CDC.*

Editorial Note: Controlling HBP can reduce disability and death from heart disease, stroke, and other cardiovascular diseases. Recommendations to control HBP include both lifestyle changes and antihypertensive medication (2). The findings in this report indicate that, although nearly all adults with self-reported HBP take at least some health action to control their HBP, some persons can take additional actions if indicated. For example, although nearly 70% of respondents report exercising to control their HBP, 30% do not exercise to control HBP.

The findings in this report are subject to at least four limitations. First, data were based on self-reports and therefore were subject to recall bias and social desirability bias (i.e., providing a socially acceptable answer rather than the most accurate answer). Second, the degree and effects from the actions taken to reduce HBP were not assessed; for example, although exercising to control HBP was assessed, the frequency was not. Third, the combined results for these 20 states are not generalizable to the entire United States. Finally, the median response rate for the 20 states was only 51.0%; however, the reliability and validity of BRFSS measures have been demonstrated (6,7).

The CDC State Heart Disease and Stroke Prevention Program funds health departments in 32 states and DC to support heart-disease prevention activities through education, strategies to change physical and social environments to decrease risk for heart disease, and elimination of racial/ethnic disparities in heart-disease risk. In addition, CDC funds 15 WISEWOMAN (<http://www.cdc.gov/wisewoman>) projects

in 14 states to provide low-income and underinsured or uninsured women aged 40–64 years with services to prevent cardiovascular disease; approximately 12,000 women have received services through WISEWOMAN in the past 4 years. WISEWOMAN projects operate on the local level in states and tribal organizations and provide preventive services, including blood-pressure screening and cholesterol testing, and lifestyle intervention programs to help women develop a healthier diet, increase physical activity, and quit using tobacco. These actions, combined with activities of clinicians and public health partners coordinated through A Public Health Action Plan to Prevent Heart Disease and Stroke (http://www.cdc.gov/dhdsp/library/action_plan/index.htm), should increase identification, treatment, and control of HBP and clarify the actions needed to control HBP.

A comprehensive approach to lifestyle modification that targets diet, salt intake, alcohol intake, and exercise can help to control HBP (8). The Dietary Approaches to Stop Hypertension diet, which is low in saturated and total fat and emphasizes fruits, vegetables, and low-fat dairy products, has assisted with reducing blood pressure (9). HBP control requires maintaining lifestyle changes and taking prescribed medications. Self-management can increase overall HBP control (10), and improvements in counseling from health-care providers, patient education, and clinician-patient partnerships could further encourage adults with HBP to take action (2).

Acknowledgment

The findings in this report are based, in part, on data provided by BRFSS state coordinators.

References

1. Miniño AM, Heron MP, Smith BL. Deaths: preliminary data for 2004. *Natl Vital Stat Rep* 2006;54(19).
2. Chobanian AV, Bakris GL, Black HR, et al. The seventh report of the Joint National Committee on Prevention, Detection, Evaluation, and Treatment of High Blood Pressure. *Hypertension* 2003;42:1206–52.
3. Hajjar I, Kotchen TA. Trends in prevalence, awareness, treatment, and control of hypertension in the United States, 1988–2000. *JAMA* 2003;290:199–206.
4. National Center for Health Statistics. *Health, United States, 2006. With chartbook on trends in the health of Americans.* Hyattsville, MD: US Department of Health and Human Services, CDC, National Center for Health Statistics; 2006.
5. US Department of Health and Human Services. *Healthy people 2010* (conference ed, in 2 vols). Washington, DC: US Department of Health and Human Services; 2000. Available at <http://www.health.gov/healthypeople>.
6. CDC. Behavioral Risk Factor Surveillance System. Summary data quality reports. Available at http://www.cdc.gov/brfss/technical_info/data/quality.htm.
7. Nelson D, Holtzman D, Bolen J, Stanwyck CA, Mack KA. Reliability and validity of measures from the Behavioral Risk Factor Surveillance System (BRFSS). *Soz Praventivmed* 2001;46(Suppl 1):S3–42.

8. Elmer PJ, Obarzanek E, Vollmer WM, et al. Effects of comprehensive lifestyle modification on diet, weight, physical fitness, and blood pressure control: 18-month results of a randomized trial. *Ann Intern Med* 2006;144:485–95.
9. Appel LJ, Moore TJ, Obarzanek E, et al. A clinical trial of the effects of dietary patterns on blood pressure. DASH Collaborative Research Group. *New Engl J Med* 1997;336:1117–24.
10. Chodosh J, Morton SC, Mojica W, et al. Meta-analysis: chronic disease self-management programs for older adults. *Ann Intern Med* 2005;143:427–38.

Projected State-Specific Increases in Self-Reported Doctor-Diagnosed Arthritis and Arthritis-Attributable Activity Limitations — United States, 2005–2030

Arthritis and other rheumatic conditions (e.g., gout, lupus, and fibromyalgia) affect approximately 46 million adults in the United States, resulting in substantial disability and costs of \$128 billion annually (1–3). Because U.S. adults are living longer and the number of persons in older age groups is growing, the number of U.S. adults living with chronic conditions such as arthritis likely will increase. The number of U.S. adults with doctor-diagnosed arthritis has been projected to reach nearly 67 million adults by the year 2030, including 25 million adults who are expected to have arthritis-attributable activity limitations (4). This report supplements those estimates by projecting the number of adults aged ≥ 18 years in each state who will have doctor-diagnosed arthritis and arthritis-attributable activity limitations in 2030.* The results indicate that, among 48 states, the median projected increase in doctor-diagnosed arthritis from 2005 to 2030 will be 16%; a total of 14 states are projected to have increases of 30% to 87%. Greater use of existing evidence-based interventions and development of new interventions aimed at decreasing pain, improving function, and delaying disability associated with arthritis are needed to reduce the impact of these projected increases, particularly in those states that will be most heavily affected.

To estimate the number of adults who will have doctor-diagnosed arthritis and arthritis-attributable activity limitations in 2030, CDC applied state arthritis prevalence proportion estimates from the 2005 Behavioral Risk Factor Surveillance System (BRFSS) survey to U.S. Census–projected state population data for the year 2030. BRFSS is a state-based, random-digit–dialed telephone survey of the U.S.

civilian, noninstitutionalized population aged ≥ 18 years. BRFSS is administered in all 50 states, the District of Columbia, and three U.S. territories (Guam, Puerto Rico, and the U.S. Virgin Islands). In 2005, the median response rate (i.e., the percentage of persons who completed interviews among all eligible persons, including those who were not successfully contacted) among states was 51.1% (range: 34.6% [New Jersey] to 67.4% [Alaska]). The median cooperation rate (i.e., the percentage of persons who completed interviews among all eligible persons contacted) was 75.1% (range: 58.7% [California] to 85.3% [Minnesota]). Self-reported doctor-diagnosed arthritis was defined as a “yes” response to the question, “Have you ever been told by a doctor or other health-care professional that you have some form of arthritis, rheumatoid arthritis, gout, lupus, or fibromyalgia?” Arthritis-attributable activity limitations were defined as a “yes” response by a respondent with doctor-diagnosed arthritis to the question, “Are you now limited in any way in any of your usual activities because of your arthritis or joint symptoms?” Projected state totals for doctor-diagnosed arthritis were calculated by applying prevalence proportion estimates for six sex-specific and age-specific (18–44 years, 45–64 years, and ≥ 65 years) groups from the 2005 BRFSS survey to corresponding U.S. Census–projected state populations for the year 2030 (6) and then adding the six results. The same method was used to calculate projected state totals for arthritis-attributable activity limitations. Projections were not calculated for the three U.S. territories because U.S. Census–projected territory populations for the year 2030 were not available.

From 2005 to 2030, the number of adults with doctor-diagnosed arthritis is projected to increase by a median of 16%[†] in 48 states (range: 2% [Iowa] to 87% [Arizona]); in 14 states, the projected increase ranges from 30% to 87% (Table). The median projected increase in the absolute number of persons with doctor-diagnosed arthritis in these same states is 126,000 (range: 8,000 [South Dakota] to 2,539,000 [Florida]); the comparable median increase in those with arthritis-attributable activity limitations is 46,000 (range: 3,000 [South Dakota] to 991,000 [Florida]) (Table). Primarily because of expected population declines, two states (North Dakota and West Virginia) and the District of Columbia are projected to have decreases in the numbers of adults with doctor-diagnosed arthritis and arthritis-attributable activity limitations.

Reported by: M Freedman, DVM, JM Hootman, PhD, CG Helmick, MD, Div of Adult and Community Health, National Center for Chronic Disease Prevention and Health Promotion, CDC.

*This report uses the most current surveillance case definition of arthritis, which excludes adults who report only chronic joint symptoms because only a small percentage of these persons have arthritis (5).

[†]The number of adults with arthritis-attributable activity limitations is projected to increase similarly (within 1%).

TABLE. State-specific 2005 estimates and 2030 projections* of the numbers of adults with doctor-diagnosed arthritis and arthritis-attributable activity limitations — Behavioral Risk Factor Surveillance System (BRFSS) and U.S. Census

| State/Area | No. of adults with doctor-diagnosed arthritis | | | No. of adults with arthritis-attributable activity limitations | | | % change in doctor-diagnosed arthritis [†] |
|------------------------------------|---|---------------|------------------------------|--|---------------|------------------------------|---|
| | 2005 (1,000s) | 2030 (1,000s) | Increase (decrease) (1,000s) | 2005 (1,000s) | 2030 (1,000s) | Increase (decrease) (1,000s) | Increase (decrease) 2030 versus 2005 (%) |
| Alabama | 1,124 | 1,238 | 114 | 468 | 515 | 47 | 10 |
| Alaska | 111 | 143 | 32 | 44 | 57 | 13 | 29 |
| Arizona | 1,131 | 2,115 | 984 | 407 | 762 | 355 | 87 |
| Arkansas | 641 | 754 | 113 | 244 | 287 | 43 | 18 |
| California | 5,927 | 7,894 | 1,967 | 2,179 | 2,903 | 724 | 33 |
| Colorado | 807 | 1,008 | 201 | 274 | 342 | 68 | 25 |
| Connecticut | 680 | 731 | 51 | 208 | 223 | 15 | 8 |
| Delaware | 187 | 233 | 46 | 62 | 77 | 15 | 25 |
| District of Columbia | 97 | 75 | (22) | 34 | 26 | (8) | (23) |
| Florida | 3,739 | 6,279 | 2,540 | 1,460 | 2,452 | 992 | 68 |
| Georgia | 1,694 | 2,289 | 595 | 676 | 914 | 238 | 35 |
| Hawaii | 214 | 252 | 38 | 67 | 79 | 12 | 18 |
| Idaho | 262 | 378 | 116 | 106 | 153 | 47 | 44 |
| Illinois | 2,358 | 2,533 | 175 | 767 | 824 | 57 | 7 |
| Indiana | 1,363 | 1,497 | 134 | 475 | 521 | 46 | 10 |
| Iowa | 617 | 628 | 11 | 205 | 209 | 4 | 2 |
| Kansas | 551 | 600 | 49 | 184 | 201 | 17 | 9 |
| Kentucky | 910 | 1,016 | 106 | 395 | 441 | 46 | 12 |
| Louisiana | 894 | 975 | 81 | 372 | 406 | 34 | 9 |
| Maine | 316 | 352 | 36 | 113 | 126 | 13 | 12 |
| Maryland | 1,159 | 1,459 | 300 | 375 | 472 | 97 | 26 |
| Massachusetts | 1,298 | 1,421 | 123 | 454 | 497 | 43 | 10 |
| Michigan | 2,357 | 2,544 | 187 | 842 | 909 | 67 | 8 |
| Minnesota | 928 | 1,224 | 296 | 331 | 437 | 106 | 32 |
| Mississippi | 688 | 764 | 76 | 296 | 328 | 32 | 11 |
| Missouri | 1,395 | 1,584 | 189 | 556 | 631 | 75 | 14 |
| Montana | 189 | 220 | 31 | 71 | 83 | 12 | 16 |
| Nebraska | 340 | 357 | 17 | 118 | 124 | 6 | 5 |
| Nevada | 441 | 805 | 364 | 164 | 298 | 134 | 82 |
| New Hampshire | 271 | 347 | 76 | 87 | 111 | 24 | 28 |
| New Jersey | 1,621 | 1,861 | 240 | 531 | 610 | 79 | 15 |
| New Mexico | 345 | 401 | 56 | 133 | 155 | 22 | 16 |
| New York | 3,824 | 3,955 | 131 | 1,348 | 1,394 | 46 | 3 |
| North Carolina | 1,788 | 2,497 | 709 | 688 | 960 | 272 | 40 |
| North Dakota | 126 | 124 | (2) | 41 | 41 | 0 | (2) |
| Ohio | 2,606 | 2,682 | 76 | 857 | 882 | 25 | 3 |
| Oklahoma | 797 | 889 | 92 | 347 | 387 | 40 | 12 |
| Oregon | 743 | 1,003 | 260 | 308 | 416 | 108 | 35 |
| Pennsylvania | 3,038 | 3,177 | 139 | 987 | 1,032 | 45 | 5 |
| Rhode Island | 234 | 254 | 20 | 70 | 76 | 6 | 8 |
| South Carolina | 986 | 1,233 | 247 | 371 | 465 | 94 | 25 |
| South Dakota | 161 | 169 | 8 | 61 | 63 | 2 | 5 |
| Tennessee | 1,341 | 1,660 | 319 | 610 | 755 | 145 | 24 |
| Texas | 3,670 | 5,425 | 1,755 | 1,350 | 1,995 | 645 | 48 |
| Utah | 374 | 551 | 177 | 145 | 213 | 68 | 47 |
| Vermont | 134 | 157 | 23 | 47 | 55 | 8 | 17 |
| Virginia | 1,580 | 2,071 | 491 | 578 | 758 | 180 | 31 |
| Washington | 1,235 | 1,745 | 510 | 504 | 713 | 209 | 41 |
| West Virginia | 498 | 487 | (11) | 247 | 241 | (6) | (2) |
| Wisconsin | 1,169 | 1,326 | 157 | 409 | 464 | 55 | 13 |
| Wyoming | 106 | 116 | 10 | 37 | 40 | 3 | 9 |
| Median increase[§] | — | — | 126 | — | — | 46 | 16 |

* Projected state totals were calculated by applying proportions for six sex-specific age groups (i.e., 18–44 years, 45–64 years, and ≥65 years) from the 2005 BRFSS survey to corresponding U.S. Census–projected state populations for the year 2030 and then adding the age groups together.

[†] The number of adults with arthritis-attributable activity limitations is projected to increase similarly (within 1%).

[§] Median increases were calculated using data only from the 48 states that projected increases in prevalences of doctor-diagnosed arthritis and arthritis-attributable activity limitations.

Editorial Note: The findings in this report confirm previous findings that arthritis and other rheumatic conditions will be increasing in nearly all U.S. states in the years ahead. On the basis of U.S. Census–projected increases in state populations overall and their older age distributions, 48 states are expected to have an increase in the number of adults reporting doctor-diagnosed arthritis and arthritis-attributable activity limitations by the year 2030, including 14 states with increases of >30%. States can use these projections to plan programs and resource allocations that will be needed to address the needs of their growing populations with arthritis.

The findings in this report are subject to at least five limitations. First, doctor-diagnosed arthritis is self-reported and not confirmed by a health-care provider; however, such self-reports have been validated previously for surveillance purposes (5). Second, BRFSS is a telephone survey that excludes certain populations (e.g., military personnel residing on bases, institutionalized populations, and persons without landline telephones). Third, the median response rate for BRFSS is low; however, BRFSS data have consistently been determined to provide valid and reliable estimates when compared with national household surveys in the United States (7). Fourth, projections in this report assume consistent age/sex prevalence proportions of doctor-diagnosed arthritis and arthritis-attributable activity limitations to the year 2030; these projections do not take into account emerging health risks (e.g., obesity) that might increase the proportions of doctor-diagnosed arthritis or emerging interventions (e.g., earlier diagnosis of and continued improvements in medications for rheumatoid arthritis) that might decrease the proportions of arthritis-attributable activity limitations. Finally, less than 2% (five of 306) of the sex- and age-specific cells used to calculate the projected prevalence of arthritis-attributable activity limitation in each state had fewer than 50 respondents before weighting and, therefore, might not be reliable estimates. However, any effect on the final state projection likely was overshadowed when the data in these five cells were summed with the other 301 cells.

CDC's Arthritis Program funds 36 state health departments, who collaborate with local chapters of the Arthritis Foundation to expand the reach of evidence-based public health interventions for arthritis. These include physical activity programs (Arthritis Foundation Exercise Program, Arthritis Foundation Aquatics Program, and Enhance Fitness) and self-management education programs (Arthritis Foundation Self-Help Program and Chronic Disease Self-Management Program), both of which are delivered by trained instructors in community settings. These interventions decrease the

impact of arthritis by reducing pain and health-care utilization and by improving the ability to function and mental health of persons with arthritis (8). In addition, the CDC Arthritis Program also has developed two communication campaigns to promote physical activity among persons with arthritis.[§] *Healthy People 2010* midcourse review objectives[‡] for arthritis include increasing the proportion of adults with doctor-diagnosed arthritis who have had effective, evidence-based arthritis education as an integral part of the management of their condition (objective 2-8). Only 11% of adults with arthritis have taken a class to help manage their arthritis (9).

In addition to expanding the reach of arthritis education and other existing interventions, new interventions that specifically target persons with arthritis at highest risk for disability (e.g., persons who are overweight, obese, or physically inactive) also should be developed, evaluated, and disseminated. CDC is funding a project to develop a new arthritis-specific exercise program that emphasizes joint-protection strategies and components designed to improve physical function. The impact of the projected increases in doctor-diagnosed arthritis and arthritis-attributable activity limitations can be reduced by greater participation in such programs and other healthful activities.

References

1. CDC. Prevalence of disabilities and associated health conditions among adults—United States, 1999. *MMWR* 2001;50:120–5.
2. CDC. Prevalence of doctor-diagnosed arthritis and arthritis-attributable activity limitation—United States, 2003–2005. *MMWR* 2006;55:1089–92.
3. CDC. National and state medical expenditures and lost earnings attributable to arthritis and other rheumatic conditions—United States, 2003. *MMWR* 2007;56:4–7.
4. Hootman JM, Helmick CG. Projections of U.S. prevalence of arthritis and associated activity limitations. *Arthritis Rheum* 2006;54:226–9.
5. Sacks JJ, Harrold LR, Helmick CG, Gurwitz JH, Emani S, Yood RA. Validation of a surveillance case definition for arthritis. *J Rheumatol* 2005;32:340–7.
6. US Census Bureau. State interim population projections by age and sex: 2004–2030. Washington DC: US Census Bureau; 2005. Available at <http://www.census.gov/population/www/projections/projectionsage sex.html>.
7. Nelson DE, Holtzman D, Bolen J, Stanwyck CA, Mack KA. Reliability and validity of measures from the Behavioral Risk Factor Surveillance System (BRFSS). *Soz Praventivmed* 2001;46(Suppl 1):S3–42.
8. Brady TJ, Kruger J, Helmick CG, Callahan LF, Boutaugh ML. Intervention programs for arthritis and other rheumatic diseases. *Health Educ Behav* 2003;30:44–63.
9. CDC. Monitoring progress in arthritis management—United States and 25 states, 2003. *MMWR* 2005;54:484–8.

[§] Available at <http://www.cdc.gov/arthritis/campaigns>.

[‡] Available at <http://www.healthypeople.gov/data/midcourse/pdf/fa02.pdf>.

Notice to Readers

National Arthritis Month — May 2007

May is National Arthritis Month. Arthritis affects approximately 46 million persons of both sexes and all ages and races, and is the most common physical cause of disability in the United States. The national prevalence of arthritis and arthritis-attributable activity limitations are both projected to increase substantially as the population ages.

This year's theme is Walk for Wellness, which is intended to remind those with arthritis that walking, a simple and readily available form of physical activity, is an effective but underused intervention for managing arthritis. Walking is a low-impact exercise appropriate for most persons with mild or moderate arthritis. Persons with arthritis also can reduce the impact of the disease by maintaining a healthy weight and pursuing education regarding arthritis self-management. To help those with arthritis better manage their disease, the Arthritis Foundation offers community-based exercise classes (through the Arthritis Foundation Exercise Program and the Arthritis Foundation Aquatics Program) and self-management education classes (through the Arthritis Foundation Self-Help Program), both of which have reduced pain and improved function and mental health among persons with arthritis.

The CDC Arthritis Program helps fund 36 state arthritis programs designed to increase the quality of life among persons affected by arthritis by implementing recommendations in the National Arthritis Action Plan: A Public Health Strategy. The program also promotes progress toward reaching the arthritis-related *Healthy People 2010* objectives. Additional information regarding public health and arthritis is available at <http://www.cdc.gov/arthritis>. Additional information regarding local arthritis programs and services is available from the Arthritis Foundation at <http://www.arthritis.org> or by telephone at 800-568-4045.

Notice to Readers

National High Blood Pressure Education Month, May 2007, and World Hypertension Day, May 17

May is National High Blood Pressure Education Month in the United States, and May 17 is World Hypertension Day. Approximately 72 million persons in the United States aged ≥ 20 years have high blood pressure (i.e., systolic blood pressure ≥ 140 mm Hg or diastolic pressure ≥ 90 mm Hg, are taking antihypertensive medication, or have been told on two or more visits to a physician or other health professional that they have high blood pressure) (1). High blood pressure in-

creases the risk for heart disease and stroke, the first and third leading causes of death, respectively, in the United States.

Lowering high blood pressure, which can prevent deaths and reduce adverse effects from heart disease and stroke, can be achieved through lifestyle modifications alone or in combination with drug therapy (2). Lifestyle changes include reducing body weight, adopting a diet high in fruits and vegetables but low in fat, reducing dietary sodium, increasing physical activity, and moderating alcohol consumption. In addition, stopping smoking improves overall cardiovascular health. The most recent recommendations for the detection and treatment of high blood pressure are available from the Joint National Committee on Prevention, Detection, Evaluation, and Treatment of High Blood Pressure (2). Additional information on prevention and treatment of high blood pressure is available from the American Heart Association at <http://www.americanheart.org> or from CDC at <http://www.cdc.gov/bloodpressure>.

References

1. American Heart Association. Heart disease and stroke statistics—2007 update. Available at <http://www.americanheart.org>.
2. Chobanian AV, Bakris GL, Black HR, et al. Seventh report of the Joint National Committee on Prevention, Detection, Evaluation, and Treatment of High Blood Pressure. *Hypertension* 2003;42:1206–52.

Notice to Readers

Healthy Vision Month — May 2007

May is Healthy Vision Month, a national eye health observance promoting the 10 vision objectives in *Healthy People 2010* (1). This year's theme is Keep Vision in Your Future, and the focus is on reducing visual impairment from glaucoma.

The CDC Vision Health Initiative and stakeholders have produced the report, *Improving the Nation's Vision Health: A Coordinated Public Health Approach*, which is aimed at preventing vision loss and blindness, promoting eye health, and improving quality of life for all persons throughout all life stages. The report is available at <http://www.cdc.gov/diabetes/projects/vision.htm>.

Reference

1. US Department of Health and Human Services. *Healthy people 2010* (conference ed, in 2 vols). Washington, DC: US Department of Health and Human Services; 2000. Available at <http://www.health.gov/healthypeople>.

Notice to Readers

National Drinking Water Week — May 6–12, 2007

Safe drinking water is vital to public health. Each year, the American Water Works Association and an alliance of organi-

zations, including the U.S. Environmental Protection Agency (EPA), sponsor National Drinking Water Awareness Week to highlight the importance of tap water and the need to reinvest in water infrastructure. The theme for 2007 is Only Tap Water Delivers (1).

Worldwide, approximately 1.1 billion persons lack access to an improved potable water source,* and an estimated 3 million persons in developing regions of the world die each year from infectious diseases related to unsafe water and inadequate sanitation (2). In contrast, the United States has one of the safest water supplies in the world. In 2005, more than 52,000 community water systems supplied approximately 93% of the U.S. population with tap water (3,4), and more than 92% of public water systems were in full compliance with health-based drinking water standards (3). Nonetheless, an estimated 4 million to 33 million cases of gastrointestinal illness associated with public drinking water systems occur annually in the United States (5,6). These estimates do not include illnesses that occur in the estimated 45 million persons served by small or individual water systems (4,7) or illnesses that are not gastrointestinal.

The occurrence of drinking-water-associated disease highlights the importance of maintaining and improving the nation's water infrastructure. EPA promotes practices to change how the nation views, values, manages, and invests in its water infrastructure so that water systems are sustainable and will be available to serve future generations. EPA is working with the water industry to identify best practices to help water utilities address aging infrastructure, efficient water use, and watershed protection (8).

CDC activities related to National Drinking Water Week include reducing the adverse health effects from contaminated drinking water and recreational water, improving access to safe water internationally, strengthening waterborne disease outbreak surveillance and investigations, supporting water-related programs at local and state health departments, and addressing terrorism concerns related to waterborne pathogens. Additional information regarding CDC activities is available at <http://www.cdc.gov/health/water.htm>, <http://www.cdc.gov/safewater>, <http://www.cdc.gov/nceh/globalhealth/projects/waterplus.htm>, and <http://www.cdc.gov/fluoridation>. Additional information about National Drinking Water Week is available at <http://www.awwa.org/advocacy/dww> and <http://www.epa.gov/safewater/index.html>.

References

1. American Water Works Association. Only tap water delivers: drinking water week 2007. Available at <http://www.awwa.org/advocacy/dww>.
2. Hutton G, Haller L. Evaluation of the costs and benefits of water and sanitation improvements at the global level. Geneva, Switzerland: World Health Organization; 2004. Available at http://www.who.int/water_sanitation_health/en/wsh0404.pdf.
3. US Environmental Protection Agency. FY2005 drinking water factoids. Available at <http://www.epa.gov/safewater/data/getdata.html>.
4. US Census Bureau. Annual estimates of the population for the United States, regions, and states and for Puerto Rico: April 1, 2000 to July 1, 2006 (NST-EST2006-01). Available at <http://www.census.gov/popest/states/NST-ann-est.html>.
5. Colford JM, Roy SL, Beach MJ, Hightower A, Shaw SE, Wade TJ. A review of household drinking water intervention trials and an approach to the estimation of endemic waterborne gastroenteritis in the United States. *Journal of Water and Health* 2006;4(Suppl 2):71–88.
6. Messner M, Shaw S, Regli S, Rotert K, Blank V, Soller J. An approach for developing a national estimate of waterborne disease due to drinking water and a national estimate model application. *J Water Health* 2006;4(Suppl 2):201–40.
7. US Environmental Protection Agency. Private drinking water wells. Available at <http://www.epa.gov/safewater/privatewells/index2.html>.
8. US Environmental Protection Agency. Sustainable infrastructure for water & wastewater. Available at <http://www.epa.gov/waterinfrastructure>.

* Potable water that is supplied through a household connection, public standpipe, borehole well, protected dug well, protected spring, or rain water collection.

TABLE I. Provisional cases of infrequently reported notifiable diseases (<1,000 cases reported during the preceding year) — United States, week ending April 28, 2007 (17th Week)*

| Disease | Current week | Cum 2007 | 5-year weekly average† | Total cases reported for previous years | | | | | States reporting cases during current week (No.) |
|---|--------------|----------|------------------------|---|------|------|-------|-------|--|
| | | | | 2006 | 2005 | 2004 | 2003 | 2002 | |
| Anthrax | — | — | — | 1 | — | — | — | 2 | |
| Botulism: | | | | | | | | | |
| foodborne | — | — | 0 | 19 | 19 | 16 | 20 | 28 | |
| infant | 1 | 18 | 1 | 96 | 85 | 87 | 76 | 69 | PA (1) |
| other (wound & unspecified) | — | 4 | 0 | 45 | 31 | 30 | 33 | 21 | |
| Brucellosis | 2 | 34 | 3 | 123 | 120 | 114 | 104 | 125 | TN (1), OK (1) |
| Chancroid | 5 | 9 | 1 | 34 | 17 | 30 | 54 | 67 | MA (1), SC (4) |
| Cholera | — | — | 0 | 7 | 8 | 5 | 2 | 2 | |
| Cyclosporiasis§ | 1 | 16 | 12 | 135 | 543 | 171 | 75 | 156 | FL (1) |
| Diphtheria | — | — | — | — | — | — | 1 | 1 | |
| Domestic arboviral diseases§¶: | | | | | | | | | |
| California serogroup | — | — | 0 | 63 | 80 | 112 | 108 | 164 | |
| eastern equine | — | — | — | 7 | 21 | 6 | 14 | 10 | |
| Powassan | — | — | — | 1 | 1 | 1 | — | 1 | |
| St. Louis | — | — | 0 | 9 | 13 | 12 | 41 | 28 | |
| western equine | — | — | — | — | — | — | — | — | |
| Ehrlichiosis§: | | | | | | | | | |
| human granulocytic | 1 | 15 | 4 | 593 | 786 | 537 | 362 | 511 | VA (1) |
| human monocytic | — | 32 | 2 | 501 | 506 | 338 | 321 | 216 | |
| human (other & unspecified) | — | 11 | 1 | 237 | 112 | 59 | 44 | 23 | |
| <i>Haemophilus influenzae</i> ,** | | | | | | | | | |
| invasive disease (age <5 yrs): | | | | | | | | | |
| serotype b | — | 4 | 0 | 13 | 9 | 19 | 32 | 34 | |
| nonserotype b | 3 | 18 | 3 | 128 | 135 | 135 | 117 | 144 | NY (2), FL (1) |
| unknown serotype | 4 | 97 | 4 | 222 | 217 | 177 | 227 | 153 | PA (1), OH (1), AR (1), UT (1) |
| Hansen disease§ | 2 | 17 | 1 | 62 | 87 | 105 | 95 | 96 | FL (2) |
| Hantavirus pulmonary syndrome§ | — | 2 | 0 | 37 | 26 | 24 | 26 | 19 | |
| Hemolytic uremic syndrome, postdiarrheal§ | 1 | 33 | 3 | 268 | 221 | 200 | 178 | 216 | MI (1) |
| Hepatitis C viral, acute | 6 | 197 | 22 | 859 | 652 | 713 | 1,102 | 1,835 | NY (1), MO (1), FL (1), TN (1), OK (1), ID (1) |
| HIV infection, pediatric (age <13 yrs)†† | — | — | 3 | 52 | 380 | 436 | 504 | 420 | |
| Influenza-associated pediatric mortality§§ | 4 | 53 | 0 | 41 | 45 | — | N | N | CT (1), CO (1), VA (2) |
| Listeriosis | 2 | 145 | 10 | 829 | 896 | 753 | 696 | 665 | OH (1), IN (1) |
| Measles¶¶ | — | 6 | 1 | 52 | 66 | 37 | 56 | 44 | |
| Meningococcal disease, invasive***: | | | | | | | | | |
| A, C, Y, & W-135 | 4 | 79 | 5 | 250 | 297 | — | — | — | NY (1), IN (2), MD (1) |
| serogroup B | 2 | 34 | 2 | 160 | 156 | — | — | — | NY (1), IN (1) |
| other serogroup | 1 | 7 | 0 | 28 | 27 | — | — | — | CT (1) |
| unknown serogroup | 6 | 234 | 17 | 678 | 765 | — | — | — | IN (1), MI (1), TN (2), CA (2) |
| Mumps | 17 | 309 | 127 | 6,561 | 314 | 258 | 231 | 270 | ND (1), WV (1), NC (11), WA (4) |
| Novel influenza A virus infections | — | — | — | N | N | N | N | N | |
| Plague | — | — | 0 | 17 | 8 | 3 | 1 | 2 | |
| Poliomyelitis, paralytic | — | — | — | — | 1 | — | — | — | |
| Poliovirus infection, nonparalytic§ | — | — | — | N | N | N | N | N | |
| Psittacosis§ | — | 3 | 0 | 21 | 16 | 12 | 12 | 18 | |
| Q fever§ | 3 | 46 | 2 | 176 | 136 | 70 | 71 | 61 | NE (1), MD (2) |
| Rabies, human | — | — | — | 3 | 2 | 7 | 2 | 3 | |
| Rubella††† | — | 9 | 0 | 9 | 11 | 10 | 7 | 18 | |
| Rubella, congenital syndrome | — | — | 0 | 1 | 1 | — | 1 | 1 | |
| SARS-CoV§§§ | — | — | — | — | — | — | 8 | N | |
| Smallpox§ | — | — | — | — | — | — | — | — | |
| Streptococcal toxic-shock syndrome§ | 1 | 23 | 4 | 104 | 129 | 132 | 161 | 118 | OH (1) |
| Syphilis, congenital (age <1 yr) | 1 | 51 | 7 | 340 | 329 | 353 | 413 | 412 | TX (1) |
| Tetanus | — | 3 | 1 | 34 | 27 | 34 | 20 | 25 | |
| Toxic-shock syndrome (staphylococcal)§ | — | 23 | 2 | 94 | 90 | 95 | 133 | 109 | |
| Trichinellosis | — | 1 | 0 | 13 | 16 | 5 | 6 | 14 | |
| Tularemia | — | 3 | 1 | 89 | 154 | 134 | 129 | 90 | |
| Typhoid fever | 2 | 77 | 5 | 315 | 324 | 322 | 356 | 321 | CT (1), VA (1) |
| Vancomycin-intermediate <i>Staphylococcus aureus</i> § | — | 3 | — | 5 | 2 | — | N | N | |
| Vancomycin-resistant <i>Staphylococcus aureus</i> § | — | — | 0 | 1 | 3 | 1 | N | N | |
| Vibriosis (non-cholera <i>Vibrio</i> species infections)§ | 4 | 39 | — | N | N | N | N | N | FL (2), CA (1), HI (1) |
| Yellow fever | — | — | — | — | — | — | — | 1 | |

—: No reported cases. N: Not notifiable. Cum: Cumulative year-to-date counts.

* Incidence data for reporting years 2006 and 2007 are provisional, whereas data for 2002, 2003, 2004, and 2005 are finalized.

† Calculated by summing the incidence counts for the current week, the 2 weeks preceding the current week, and the 2 weeks following the current week, for a total of 5 preceding years. Additional information is available at <http://www.cdc.gov/epo/dphsi/phs/files/5yearweeklyaverage.pdf>.

§ Not notifiable in all states. Data from states where the condition is not notifiable are excluded from this table, except in 2007 for the domestic arboviral diseases and influenza-associated pediatric mortality, and in 2003 for SARS-CoV. Reporting exceptions are available at <http://www.cdc.gov/epo/dphsi/phs/infdis.htm>.

¶ Includes both neuroinvasive and non-neuroinvasive. Updated weekly from reports to the Division of Vector-Borne Infectious Diseases, National Center for Zoonotic, Vector-Borne, and Enteric Diseases (ArboNET Surveillance). Data for West Nile virus are available in Table II.

** Data for *H. influenzae* (all ages, all serotypes) are available in Table II.

†† Updated monthly from reports to the Division of HIV/AIDS Prevention, National Center for HIV/AIDS, Viral Hepatitis, STD, and TB Prevention. Implementation of HIV reporting influences the number of cases reported. Updates of pediatric HIV data have been temporarily suspended until upgrading of the national HIV/AIDS surveillance data management system is completed. Data for HIV/AIDS, when available, are displayed in Table IV, which appears quarterly.

§§ Updated weekly from reports to the Influenza Division, National Center for Immunization and Respiratory Diseases. A total of 54 cases were reported for the 2006–07 flu season.

¶¶ No measles cases were reported for the current week.

*** Data for meningococcal disease (all serogroups) are available in Table II.

††† No rubella cases were reported for the current week.

§§§ Updated weekly from reports to the Division of Viral and Rickettsial Diseases, National Center for Zoonotic, Vector-Borne, and Enteric Diseases.

TABLE II. Provisional cases of selected notifiable diseases, United States, weeks ending April 28, 2007, and April 29, 2006 (17th Week)*

| Reporting area | Chlamydia† | | | | | Coccidioidomycosis | | | | | Cryptosporidiosis | | | | |
|----------------------|--------------|-------------------|--------|----------|----------|--------------------|-------------------|-----|----------|----------|-------------------|-------------------|-----|----------|----------|
| | Current week | Previous 52 weeks | | Cum 2007 | Cum 2006 | Current week | Previous 52 weeks | | Cum 2007 | Cum 2006 | Current week | Previous 52 weeks | | Cum 2007 | Cum 2006 |
| | | Med | Max | | | | Med | Max | | | | Med | Max | | |
| United States | 10,876 | 19,858 | 23,487 | 302,276 | 326,268 | 100 | 151 | 649 | 2,556 | 2,919 | 27 | 69 | 302 | 741 | 825 |
| New England | 498 | 673 | 1,364 | 10,577 | 9,882 | — | 0 | 0 | — | — | 2 | 3 | 22 | 33 | 72 |
| Connecticut | 157 | 194 | 833 | 2,468 | 2,240 | N | 0 | 0 | N | N | — | 0 | 7 | 7 | 38 |
| Maine§ | 34 | 47 | 73 | 831 | 674 | — | 0 | 0 | — | — | — | 0 | 6 | 7 | 9 |
| Massachusetts | 201 | 306 | 604 | 5,286 | 4,865 | — | 0 | 0 | — | — | — | 0 | 14 | — | 22 |
| New Hampshire | 8 | 38 | 69 | 613 | 593 | — | 0 | 0 | — | — | 1 | 1 | 5 | 8 | 1 |
| Rhode Island§ | 98 | 63 | 108 | 1,090 | 1,089 | — | 0 | 0 | — | — | 1 | 0 | 5 | 5 | — |
| Vermont§ | — | 20 | 45 | 289 | 421 | N | 0 | 0 | N | N | — | 1 | 5 | 6 | 2 |
| Mid. Atlantic | 1,534 | 2,533 | 4,164 | 44,177 | 39,908 | — | 0 | 0 | — | — | — | 10 | 33 | 90 | 135 |
| New Jersey | 126 | 386 | 541 | 5,132 | 6,345 | N | 0 | 0 | N | N | — | 0 | 1 | — | 9 |
| New York (Upstate) | 607 | 501 | 2,745 | 7,988 | 7,062 | N | 0 | 0 | N | N | — | 3 | 13 | 33 | 26 |
| New York City | 381 | 757 | 1,541 | 13,785 | 13,525 | N | 0 | 0 | N | N | — | 2 | 12 | 15 | 34 |
| Pennsylvania | 420 | 805 | 1,262 | 17,272 | 12,976 | N | 0 | 0 | N | N | — | 4 | 18 | 42 | 66 |
| E.N. Central | 1,694 | 3,199 | 6,275 | 51,327 | 55,951 | — | 1 | 3 | 10 | 13 | 8 | 15 | 110 | 170 | 181 |
| Illinois | 632 | 1,010 | 1,259 | 14,039 | 18,030 | — | 0 | 0 | — | — | — | 2 | 22 | 17 | 24 |
| Indiana | — | 380 | 632 | 6,503 | 6,808 | — | 0 | 0 | — | — | 2 | 1 | 18 | 15 | 11 |
| Michigan | 462 | 765 | 1,225 | 11,951 | 9,232 | — | 1 | 3 | 8 | 9 | 3 | 2 | 9 | 38 | 32 |
| Ohio | 506 | 643 | 3,863 | 13,071 | 14,689 | — | 0 | 2 | 2 | 4 | 3 | 5 | 33 | 60 | 66 |
| Wisconsin | 94 | 376 | 528 | 5,763 | 7,192 | N | 0 | 0 | N | N | — | 4 | 53 | 40 | 48 |
| W.N. Central | 215 | 1,179 | 1,445 | 16,354 | 20,280 | — | 0 | 54 | 3 | — | 4 | 12 | 77 | 111 | 122 |
| Iowa | 110 | 160 | 239 | 2,741 | 2,819 | N | 0 | 0 | N | N | — | 2 | 28 | 20 | 11 |
| Kansas | — | 149 | 266 | 2,446 | 2,682 | N | 0 | 0 | N | N | — | 1 | 8 | 13 | 18 |
| Minnesota | — | 241 | 298 | 3,117 | 4,322 | — | 0 | 54 | — | — | 3 | 2 | 25 | 31 | 47 |
| Missouri | — | 440 | 628 | 5,220 | 7,277 | — | 0 | 1 | 3 | — | 1 | 2 | 21 | 21 | 26 |
| Nebraska§ | 26 | 104 | 180 | 1,598 | 1,684 | N | 0 | 0 | N | N | — | 1 | 16 | 6 | 9 |
| North Dakota | 18 | 28 | 64 | 418 | 634 | N | 0 | 0 | N | N | — | 0 | 1 | 1 | 1 |
| South Dakota | 61 | 50 | 84 | 814 | 862 | N | 0 | 0 | N | N | — | 1 | 7 | 19 | 10 |
| S. Atlantic | 3,222 | 3,614 | 6,115 | 48,735 | 61,276 | — | 0 | 1 | 1 | 2 | 11 | 17 | 68 | 208 | 193 |
| Delaware | 47 | 69 | 111 | 1,135 | 1,179 | N | 0 | 0 | N | N | — | 0 | 3 | 2 | — |
| District of Columbia | 113 | 71 | 161 | 1,726 | 963 | — | 0 | 0 | — | — | — | 0 | 2 | 3 | 5 |
| Florida | — | 947 | 1,187 | 3,300 | 15,306 | N | 0 | 0 | N | N | 7 | 8 | 32 | 100 | 79 |
| Georgia | — | 702 | 3,022 | 7,608 | 10,715 | N | 0 | 0 | N | N | — | 5 | 12 | 52 | 57 |
| Maryland§ | 487 | 341 | 945 | 6,926 | 5,779 | — | 0 | 1 | 1 | 2 | — | 0 | 2 | 8 | 6 |
| North Carolina | 48 | 624 | 1,772 | 9,403 | 11,111 | — | 0 | 0 | — | — | 1 | 0 | 11 | 13 | 25 |
| South Carolina§ | 1,944 | 395 | 2,105 | 9,714 | 7,490 | N | 0 | 0 | N | N | 1 | 1 | 14 | 13 | 6 |
| Virginia§ | 527 | 473 | 685 | 8,148 | 7,768 | N | 0 | 0 | N | N | 2 | 1 | 5 | 15 | 13 |
| West Virginia | 56 | 54 | 96 | 775 | 965 | N | 0 | 0 | N | N | — | 0 | 3 | 2 | 2 |
| E.S. Central | 1,006 | 1,470 | 2,095 | 25,497 | 25,207 | — | 0 | 0 | — | — | 1 | 3 | 14 | 40 | 25 |
| Alabama§ | 64 | 419 | 539 | 6,103 | 8,249 | N | 0 | 0 | N | N | — | 0 | 11 | 12 | 8 |
| Kentucky | 357 | 126 | 691 | 2,412 | 3,339 | N | 0 | 0 | N | N | — | 1 | 3 | 15 | 8 |
| Mississippi | — | 401 | 959 | 7,401 | 5,414 | N | 0 | 0 | N | N | — | 0 | 7 | 7 | 1 |
| Tennessee§ | 585 | 528 | 703 | 9,581 | 8,205 | N | 0 | 0 | N | N | 1 | 1 | 5 | 6 | 8 |
| W.S. Central | 1,453 | 2,184 | 3,027 | 35,501 | 36,913 | — | 0 | 1 | — | — | — | 5 | 45 | 29 | 42 |
| Arkansas§ | 203 | 160 | 337 | 2,843 | 2,661 | N | 0 | 0 | N | N | — | 0 | 2 | 2 | 5 |
| Louisiana | 52 | 317 | 610 | 5,125 | 5,794 | — | 0 | 1 | — | — | — | 1 | 9 | 11 | — |
| Oklahoma | — | 264 | 473 | 4,076 | 3,399 | N | 0 | 0 | N | N | — | 1 | 4 | 11 | 11 |
| Texas§ | 1,198 | 1,440 | 1,910 | 23,457 | 25,059 | N | 0 | 0 | N | N | — | 2 | 36 | 5 | 26 |
| Mountain | 206 | 1,273 | 2,018 | 16,973 | 20,848 | 93 | 101 | 296 | 1,825 | 2,130 | — | 4 | 40 | 40 | 32 |
| Arizona | 80 | 478 | 993 | 6,387 | 6,331 | 93 | 99 | 296 | 1,789 | 2,070 | — | 0 | 3 | 10 | 4 |
| Colorado | — | 311 | 416 | 1,874 | 5,099 | N | 0 | 0 | N | N | — | 1 | 7 | 11 | 9 |
| Idaho§ | — | 44 | 253 | 1,175 | 1,117 | N | 0 | 0 | N | N | — | 0 | 5 | 3 | 3 |
| Montana§ | 12 | 51 | 144 | 823 | 781 | N | 0 | 0 | N | N | — | 0 | 26 | 3 | 5 |
| Nevada§ | — | 107 | 397 | 2,234 | 2,032 | — | 1 | 3 | 12 | 27 | — | 0 | 2 | 2 | 3 |
| New Mexico§ | — | 179 | 324 | 2,591 | 3,380 | — | 0 | 3 | 5 | 6 | — | 0 | 5 | 6 | 3 |
| Utah | 100 | 95 | 200 | 1,483 | 1,650 | — | 1 | 4 | 19 | 25 | — | 0 | 3 | 1 | 5 |
| Wyoming§ | 14 | 29 | 54 | 406 | 458 | — | 0 | 0 | — | 2 | — | 0 | 11 | 4 | — |
| Pacific | 1,048 | 3,371 | 4,069 | 53,135 | 56,003 | 7 | 53 | 299 | 717 | 774 | 1 | 1 | 5 | 20 | 23 |
| Alaska | 54 | 87 | 157 | 1,326 | 1,336 | N | 0 | 0 | N | N | — | 0 | 1 | — | 1 |
| California | 535 | 2,660 | 3,259 | 41,233 | 43,574 | 7 | 53 | 299 | 717 | 774 | — | 0 | 0 | — | — |
| Hawaii | 4 | 107 | 130 | 1,652 | 1,901 | N | 0 | 0 | N | N | — | 0 | 1 | — | — |
| Oregon§ | 144 | 161 | 394 | 3,057 | 3,215 | N | 0 | 0 | N | N | 1 | 1 | 4 | 20 | 22 |
| Washington | 311 | 350 | 621 | 5,867 | 5,977 | N | 0 | 0 | N | N | — | 0 | 0 | — | — |
| American Samoa | U | 0 | 46 | U | U | U | 0 | 0 | U | U | U | 0 | 0 | U | U |
| C.N.M.I. | U | — | — | — | — | U | — | — | — | — | U | — | — | — | U |
| Guam | — | — | — | — | — | — | — | — | — | — | — | — | — | — | — |
| Puerto Rico | 87 | 118 | 235 | 2,360 | 1,546 | N | 0 | 0 | N | N | N | 0 | 0 | N | N |
| U.S. Virgin Islands | U | 4 | 9 | U | U | U | 0 | 0 | U | U | U | 0 | 0 | U | U |

C.N.M.I.: Commonwealth of Northern Mariana Islands.

U: Unavailable. —: No reported cases. N: Not notifiable. Cum: Cumulative year-to-date counts. Med: Median. Max: Maximum.

* Incidence data for reporting years 2006 and 2007 are provisional. Data for HIV/AIDS, AIDS, and TB, when available, are displayed in Table IV, which appears quarterly.

† Chlamydia refers to genital infections caused by *Chlamydia trachomatis*.

§ Contains data reported through the National Electronic Disease Surveillance System (NEDSS).

TABLE II. (Continued) Provisional cases of selected notifiable diseases, United States, weeks ending April 28, 2007, and April 29, 2006 (17th Week)*

| Reporting area | Giardiasis | | | | | Gonorrhea | | | | | <i>Haemophilus influenzae</i> , invasive All ages, all serotypes† | | | | | | | |
|-----------------------------|--------------|-------------------|-------|-------|----------|-----------|--------------|-------------------|--------|---------|--|----------|--------------|-------------------|-----|--|----------|----------|
| | Current week | Previous 52 weeks | | | Cum 2007 | Cum 2006 | Current week | Previous 52 weeks | | | Cum 2007 | Cum 2006 | Current week | Previous 52 weeks | | | Cum 2007 | Cum 2006 |
| | | Med | Max | | | | | Med | Max | | | | | Med | Max | | | |
| United States | 139 | 314 | 1,029 | 4,011 | 4,701 | 3,316 | 6,794 | 8,665 | 96,838 | 110,939 | 33 | 43 | 144 | 773 | 761 | | | |
| New England | 7 | 18 | 44 | 164 | 344 | 100 | 111 | 259 | 1,696 | 1,655 | — | 2 | 12 | 26 | 41 | | | |
| Connecticut | — | 5 | 24 | 70 | 88 | 37 | 42 | 203 | 547 | 555 | — | 0 | 7 | 17 | 8 | | | |
| Maine [§] | 1 | 4 | 14 | 44 | 25 | 1 | 2 | 8 | 23 | 40 | — | 0 | 4 | 5 | 5 | | | |
| Massachusetts | — | 0 | 18 | — | 159 | 42 | 48 | 96 | 888 | 802 | — | 0 | 7 | — | 21 | | | |
| New Hampshire | — | 0 | 9 | 2 | 1 | 6 | 3 | 8 | 52 | 79 | — | 0 | 3 | 3 | 2 | | | |
| Rhode Island [§] | 6 | 0 | 17 | 12 | 25 | 14 | 10 | 19 | 168 | 160 | — | 0 | 3 | 1 | 2 | | | |
| Vermont [§] | — | 3 | 12 | 36 | 46 | — | 1 | 5 | 18 | 19 | — | 0 | 2 | — | 3 | | | |
| Mid. Atlantic | 30 | 66 | 123 | 727 | 964 | 360 | 676 | 1,519 | 11,578 | 10,668 | 8 | 10 | 26 | 184 | 168 | | | |
| New Jersey | — | 7 | 17 | 36 | 149 | 49 | 102 | 156 | 1,483 | 1,748 | — | 1 | 5 | 17 | 31 | | | |
| New York (Upstate) | 26 | 24 | 101 | 272 | 288 | 104 | 122 | 1,035 | 1,948 | 1,934 | 4 | 3 | 14 | 53 | 41 | | | |
| New York City | 2 | 17 | 33 | 239 | 299 | 72 | 176 | 376 | 3,036 | 3,284 | — | 2 | 6 | 37 | 36 | | | |
| Pennsylvania | 2 | 14 | 35 | 180 | 228 | 135 | 239 | 413 | 5,111 | 3,702 | 4 | 3 | 10 | 77 | 60 | | | |
| E.N. Central | 6 | 42 | 96 | 558 | 806 | 542 | 1,291 | 2,566 | 20,620 | 22,193 | 4 | 6 | 14 | 81 | 114 | | | |
| Illinois | — | 9 | 27 | 82 | 182 | 182 | 356 | 485 | 4,942 | 6,621 | — | 1 | 5 | 10 | 36 | | | |
| Indiana | N | 0 | 0 | N | N | — | 154 | 289 | 2,647 | 2,959 | 1 | 1 | 10 | 16 | 19 | | | |
| Michigan | 2 | 13 | 38 | 187 | 229 | 139 | 313 | 880 | 5,200 | 3,555 | — | 0 | 5 | 9 | 15 | | | |
| Ohio | 4 | 15 | 32 | 212 | 246 | 170 | 315 | 1,636 | 5,782 | 6,677 | 3 | 2 | 6 | 46 | 30 | | | |
| Wisconsin | — | 8 | 24 | 77 | 149 | 51 | 135 | 181 | 2,049 | 2,381 | — | 0 | 3 | — | 14 | | | |
| W.N. Central | 6 | 23 | 539 | 273 | 398 | 45 | 383 | 515 | 5,030 | 6,098 | 3 | 3 | 23 | 47 | 35 | | | |
| Iowa | — | 5 | 16 | 56 | 76 | 16 | 38 | 63 | 612 | 578 | — | 0 | 1 | — | — | | | |
| Kansas | — | 3 | 11 | 35 | 51 | — | 43 | 87 | 714 | 756 | — | 0 | 2 | 4 | 6 | | | |
| Minnesota | — | 0 | 514 | 12 | 78 | 4 | 62 | 87 | 841 | 1,005 | 3 | 1 | 17 | 18 | 13 | | | |
| Missouri | 2 | 9 | 28 | 125 | 135 | — | 195 | 269 | 2,354 | 3,209 | — | 1 | 5 | 19 | 13 | | | |
| Nebraska [§] | 1 | 2 | 9 | 24 | 25 | 17 | 26 | 48 | 393 | 403 | — | 0 | 2 | 5 | 3 | | | |
| North Dakota | 3 | 0 | 4 | 4 | 5 | 3 | 2 | 6 | 22 | 37 | — | 0 | 2 | 1 | — | | | |
| South Dakota | — | 1 | 6 | 17 | 28 | 5 | 6 | 15 | 94 | 110 | — | 0 | 0 | — | — | | | |
| S. Atlantic | 35 | 52 | 98 | 766 | 687 | 1,150 | 1,580 | 2,696 | 19,063 | 26,529 | 7 | 11 | 28 | 208 | 196 | | | |
| Delaware | — | 0 | 4 | 8 | 8 | 29 | 28 | 44 | 463 | 483 | — | 0 | 3 | 5 | 1 | | | |
| District of Columbia | 1 | 1 | 7 | 17 | 20 | 39 | 36 | 63 | 735 | 611 | — | 0 | 2 | 2 | 1 | | | |
| Florida | 27 | 24 | 44 | 362 | 284 | — | 446 | 549 | 1,564 | 7,051 | 3 | 3 | 9 | 67 | 64 | | | |
| Georgia | — | 12 | 26 | 162 | 154 | — | 348 | 1,539 | 3,159 | 4,874 | — | 2 | 6 | 53 | 46 | | | |
| Maryland [§] | 2 | 4 | 12 | 69 | 45 | 164 | 117 | 238 | 2,157 | 2,197 | — | 2 | 5 | 37 | 28 | | | |
| North Carolina | — | 0 | 0 | — | — | — | 317 | 676 | 4,873 | 5,547 | 3 | 0 | 8 | 18 | 15 | | | |
| South Carolina [§] | 1 | 2 | 8 | 20 | 31 | 822 | 167 | 1,026 | 3,959 | 3,382 | 1 | 1 | 4 | 19 | 16 | | | |
| Virginia [§] | 4 | 9 | 28 | 120 | 139 | 88 | 124 | 238 | 1,938 | 2,137 | — | 0 | 7 | 1 | 16 | | | |
| West Virginia | — | 0 | 21 | 8 | 6 | 8 | 19 | 44 | 215 | 247 | — | 0 | 6 | 6 | 9 | | | |
| E.S. Central | 8 | 8 | 34 | 124 | 116 | 357 | 578 | 878 | 9,162 | 9,947 | 3 | 2 | 9 | 42 | 52 | | | |
| Alabama [§] | 1 | 3 | 22 | 54 | 58 | 21 | 191 | 271 | 2,478 | 3,761 | — | 0 | 3 | 8 | 11 | | | |
| Kentucky | N | 0 | 0 | N | N | 137 | 48 | 268 | 845 | 1,151 | — | 0 | 1 | 2 | 4 | | | |
| Mississippi | N | 0 | 0 | N | N | — | 157 | 434 | 2,607 | 2,008 | — | 0 | 1 | — | 4 | | | |
| Tennessee [§] | 7 | 5 | 12 | 70 | 58 | 199 | 194 | 240 | 3,232 | 3,027 | 3 | 1 | 6 | 32 | 33 | | | |
| W.S. Central | 1 | 7 | 26 | 96 | 46 | 456 | 960 | 1,483 | 14,604 | 15,599 | 3 | 1 | 27 | 41 | 27 | | | |
| Arkansas [§] | 1 | 3 | 13 | 44 | 21 | 66 | 81 | 142 | 1,350 | 1,481 | 1 | 0 | 2 | 3 | 2 | | | |
| Louisiana | — | 1 | 6 | 22 | — | 21 | 193 | 366 | 3,087 | 3,346 | — | 0 | 3 | 4 | 1 | | | |
| Oklahoma | — | 2 | 13 | 30 | 25 | — | 103 | 237 | 1,669 | 1,190 | 2 | 1 | 25 | 32 | 23 | | | |
| Texas [§] | N | 0 | 0 | N | N | 369 | 561 | 931 | 8,498 | 9,582 | — | 0 | 2 | 2 | 1 | | | |
| Mountain | 12 | 31 | 69 | 381 | 435 | 32 | 264 | 455 | 3,234 | 4,478 | 5 | 4 | 14 | 106 | 92 | | | |
| Arizona | — | 3 | 11 | 57 | 38 | 14 | 106 | 220 | 1,317 | 1,577 | 2 | 2 | 9 | 51 | 33 | | | |
| Colorado | — | 10 | 26 | 120 | 149 | — | 70 | 93 | 586 | 1,164 | — | 1 | 4 | 21 | 28 | | | |
| Idaho [§] | 1 | 3 | 12 | 35 | 48 | — | 2 | 20 | 75 | 68 | — | 0 | 1 | 4 | 3 | | | |
| Montana [§] | — | 2 | 11 | 25 | 22 | 1 | 3 | 20 | 32 | 46 | — | 0 | 0 | — | — | | | |
| Nevada [§] | — | 2 | 9 | 26 | 31 | — | 28 | 135 | 534 | 704 | — | 0 | 2 | 5 | 6 | | | |
| New Mexico [§] | — | 1 | 6 | 21 | 19 | — | 30 | 65 | 443 | 563 | — | 0 | 2 | 9 | 13 | | | |
| Utah | 11 | 6 | 27 | 85 | 122 | 15 | 16 | 28 | 225 | 302 | 3 | 0 | 3 | 15 | 9 | | | |
| Wyoming [§] | — | 1 | 4 | 12 | 6 | 2 | 2 | 5 | 22 | 54 | — | 0 | 1 | 1 | — | | | |
| Pacific | 34 | 60 | 147 | 922 | 905 | 274 | 776 | 971 | 11,851 | 13,772 | — | 2 | 8 | 38 | 36 | | | |
| Alaska | 1 | 1 | 17 | 19 | 11 | 7 | 10 | 27 | 137 | 182 | — | 0 | 2 | 4 | 3 | | | |
| California | 19 | 42 | 71 | 644 | 681 | 199 | 640 | 833 | 9,972 | 11,421 | — | 0 | 6 | — | 10 | | | |
| Hawaii | — | 1 | 4 | 21 | 19 | 1 | 14 | 30 | 198 | 357 | — | 0 | 1 | 2 | 6 | | | |
| Oregon [§] | 7 | 9 | 14 | 132 | 123 | 24 | 26 | 46 | 357 | 458 | — | 1 | 6 | 32 | 16 | | | |
| Washington | 7 | 8 | 68 | 106 | 71 | 43 | 75 | 142 | 1,187 | 1,354 | — | 0 | 2 | — | 1 | | | |
| American Samoa | U | 0 | 0 | U | U | U | 0 | 2 | U | U | U | 0 | 0 | U | U | | | |
| C.N.M.I. | U | — | — | U | U | U | — | — | U | U | U | — | — | U | U | | | |
| Guam | — | — | — | — | — | — | — | — | — | — | — | — | — | — | — | | | |
| Puerto Rico | 1 | 5 | 19 | 49 | 32 | 4 | 6 | 16 | 119 | 116 | 1 | 0 | 2 | 1 | — | | | |
| U.S. Virgin Islands | U | 0 | 0 | U | U | U | 0 | 3 | U | U | U | 0 | 0 | U | U | | | |

C.N.M.I.: Commonwealth of Northern Mariana Islands.

U: Unavailable. —: No reported cases. N: Not notifiable. Cum: Cumulative year-to-date counts. Med: Median. Max: Maximum.

* Incidence data for reporting years 2006 and 2007 are provisional.

† Data for *H. influenzae* (age <5 yrs for serotype b, nonserotype b, and unknown serotype) are available in Table I.

§ Contains data reported through the National Electronic Disease Surveillance System (NEDSS).

TABLE II. (Continued) Provisional cases of selected notifiable diseases, United States, weeks ending April 28, 2007, and April 29, 2006 (17th Week)*

| Reporting area | Hepatitis (viral, acute), by type† | | | | | | | | | | Legionellosis | | | | |
|----------------------|------------------------------------|-------------------|-----|----------|----------|--------------|-------------------|-----|----------|----------|---------------|-------------------|-----|----------|----------|
| | A | | | | | B | | | | | | | | | |
| | Current week | Previous 52 weeks | | Cum 2007 | Cum 2006 | Current week | Previous 52 weeks | | Cum 2007 | Cum 2006 | Current week | Previous 52 weeks | | Cum 2007 | Cum 2006 |
| | Med | Max | | | | Med | Max | | | | Med | Max | | | |
| United States | 28 | 55 | 120 | 753 | 1,235 | 33 | 79 | 309 | 1,174 | 1,321 | 18 | 49 | 107 | 417 | 414 |
| New England | — | 1 | 19 | 11 | 67 | — | 2 | 5 | 19 | 44 | — | 2 | 13 | 9 | 18 |
| Connecticut | — | 1 | 3 | 4 | 11 | — | 0 | 5 | 10 | 21 | — | 0 | 9 | 3 | 3 |
| Maine§ | — | 0 | 2 | 1 | 3 | — | 0 | 2 | 1 | 6 | — | 0 | 2 | — | 2 |
| Massachusetts | — | 0 | 1 | — | 46 | — | 0 | 1 | — | 13 | — | 0 | 4 | — | 10 |
| New Hampshire | — | 0 | 15 | 3 | 1 | — | 0 | 2 | 2 | — | — | 0 | 2 | — | 2 |
| Rhode Island§ | — | 0 | 2 | 3 | 2 | — | 0 | 4 | 5 | 3 | — | 0 | 6 | 5 | — |
| Vermont§ | — | 0 | 2 | — | 4 | — | 0 | 1 | 1 | 1 | — | 0 | 2 | 1 | 1 |
| Mid. Atlantic | 2 | 7 | 19 | 103 | 97 | 3 | 9 | 19 | 134 | 164 | 6 | 15 | 53 | 112 | 119 |
| New Jersey | — | 2 | 4 | 21 | 31 | — | 2 | 6 | 30 | 50 | — | 2 | 11 | 12 | 15 |
| New York (Upstate) | 1 | 2 | 12 | 27 | 18 | 2 | 1 | 14 | 26 | 23 | 5 | 5 | 30 | 36 | 38 |
| New York City | — | 2 | 11 | 39 | 33 | — | 2 | 6 | 24 | 33 | — | 2 | 20 | 16 | 17 |
| Pennsylvania | 1 | 1 | 4 | 16 | 15 | 1 | 3 | 7 | 54 | 58 | 1 | 5 | 19 | 48 | 49 |
| E.N. Central | 2 | 6 | 13 | 71 | 98 | 4 | 8 | 19 | 124 | 150 | 3 | 10 | 30 | 81 | 84 |
| Illinois | — | 1 | 4 | 17 | 21 | — | 1 | 5 | 15 | 54 | — | 1 | 11 | — | 15 |
| Indiana | — | 0 | 7 | 5 | 7 | — | 0 | 17 | 11 | 9 | — | 1 | 5 | 5 | 3 |
| Michigan | 1 | 2 | 8 | 26 | 35 | — | 2 | 8 | 41 | 50 | — | 3 | 10 | 30 | 17 |
| Ohio | 1 | 1 | 4 | 23 | 25 | 4 | 3 | 10 | 52 | 35 | 3 | 4 | 19 | 45 | 36 |
| Wisconsin | — | 0 | 4 | — | 10 | — | 0 | 3 | 5 | 2 | — | 0 | 3 | 1 | 13 |
| W.N. Central | — | 2 | 17 | 43 | 40 | — | 2 | 14 | 45 | 48 | — | 1 | 16 | 15 | 13 |
| Iowa | — | 0 | 1 | 6 | 3 | — | 0 | 3 | 8 | 8 | — | 0 | 3 | 1 | 1 |
| Kansas | — | 0 | 1 | — | 16 | — | 0 | 2 | 4 | 6 | — | 0 | 3 | 2 | 1 |
| Minnesota | — | 0 | 17 | 24 | 2 | — | 0 | 13 | 4 | 2 | — | 0 | 11 | 2 | — |
| Missouri | — | 1 | 3 | 7 | 10 | — | 1 | 5 | 24 | 29 | — | 0 | 2 | 8 | 8 |
| Nebraska§ | — | 0 | 2 | 4 | 4 | — | 0 | 3 | 3 | 2 | — | 0 | 2 | 1 | 2 |
| North Dakota | — | 0 | 0 | — | — | — | 0 | 0 | — | — | — | 0 | 0 | — | — |
| South Dakota | — | 0 | 2 | 2 | 5 | — | 0 | 1 | 2 | 1 | — | 0 | 1 | 1 | 1 |
| S. Atlantic | 8 | 9 | 27 | 148 | 177 | 19 | 23 | 53 | 320 | 381 | 4 | 9 | 24 | 109 | 100 |
| Delaware | — | 0 | 2 | — | 4 | — | 0 | 4 | 5 | 14 | — | 0 | 2 | 1 | 1 |
| District of Columbia | — | 0 | 5 | 14 | 1 | — | 0 | 2 | 1 | 4 | — | 0 | 5 | — | 4 |
| Florida | 4 | 3 | 13 | 54 | 64 | 11 | 7 | 14 | 110 | 140 | 3 | 3 | 9 | 51 | 48 |
| Georgia | — | 1 | 5 | 16 | 13 | — | 3 | 8 | 39 | 54 | — | 1 | 5 | 11 | 2 |
| Maryland§ | 1 | 1 | 7 | 22 | 26 | — | 2 | 8 | 28 | 54 | — | 2 | 8 | 22 | 16 |
| North Carolina | — | 0 | 11 | 7 | 40 | — | 1 | 16 | 52 | 66 | — | 0 | 5 | 9 | 13 |
| South Carolina§ | — | 0 | 3 | 4 | 7 | — | 2 | 5 | 25 | 23 | — | 0 | 2 | 5 | 2 |
| Virginia§ | 3 | 1 | 5 | 30 | 21 | 3 | 2 | 5 | 41 | 13 | 1 | 1 | 5 | 7 | 13 |
| West Virginia | — | 0 | 3 | 1 | 1 | 5 | 0 | 23 | 19 | 13 | — | 0 | 4 | 3 | 1 |
| E.S. Central | 1 | 2 | 7 | 22 | 41 | 2 | 6 | 20 | 74 | 115 | — | 2 | 9 | 17 | 13 |
| Alabama§ | — | 0 | 2 | 3 | 2 | — | 1 | 10 | 22 | 27 | — | 0 | 2 | 1 | 3 |
| Kentucky | — | 0 | 2 | 4 | 19 | — | 1 | 5 | 2 | 31 | — | 1 | 6 | 8 | 3 |
| Mississippi | — | 0 | 4 | 4 | 2 | — | 0 | 7 | 7 | 13 | — | 0 | 2 | — | 1 |
| Tennessee§ | 1 | 1 | 5 | 11 | 18 | 2 | 3 | 7 | 43 | 44 | — | 1 | 7 | 8 | 6 |
| W.S. Central | 3 | 6 | 18 | 43 | 110 | 3 | 19 | 151 | 211 | 206 | 4 | 1 | 12 | 22 | 8 |
| Arkansas§ | — | 0 | 2 | 4 | 27 | — | 1 | 4 | 7 | 19 | — | 0 | 1 | 1 | 1 |
| Louisiana | — | 0 | 4 | 7 | 3 | — | 1 | 5 | 14 | 6 | — | 0 | 2 | 1 | — |
| Oklahoma | 3 | 0 | 3 | 3 | 3 | — | 1 | 37 | 11 | 1 | — | 0 | 6 | — | 1 |
| Texas§ | — | 5 | 15 | 29 | 77 | 3 | 15 | 108 | 179 | 180 | 4 | 1 | 12 | 20 | 6 |
| Mountain | 11 | 5 | 17 | 107 | 107 | — | 3 | 9 | 71 | 47 | — | 2 | 8 | 26 | 23 |
| Arizona | 11 | 3 | 13 | 90 | 62 | — | 0 | 6 | 33 | 2 | — | 1 | 4 | 9 | 7 |
| Colorado | — | 1 | 3 | 7 | 17 | — | 0 | 4 | 8 | 11 | — | 0 | 2 | 5 | 5 |
| Idaho§ | — | 0 | 2 | 1 | 4 | — | 0 | 2 | 4 | 5 | — | 0 | 3 | 1 | 2 |
| Montana§ | — | 0 | 3 | 1 | 1 | — | 0 | 0 | — | — | — | 0 | 1 | 1 | — |
| Nevada§ | — | 0 | 2 | 5 | 6 | — | 1 | 5 | 13 | 14 | — | 0 | 2 | 2 | 4 |
| New Mexico§ | — | 0 | 2 | 1 | 8 | — | 0 | 2 | 4 | 7 | — | 0 | 2 | 2 | — |
| Utah | — | 0 | 2 | 2 | 8 | — | 0 | 4 | 9 | 8 | — | 0 | 2 | 4 | 5 |
| Wyoming§ | — | 0 | 1 | — | 1 | — | 0 | 1 | — | — | — | 0 | 1 | 2 | — |
| Pacific | 1 | 14 | 52 | 205 | 498 | 2 | 11 | 38 | 176 | 166 | 1 | 1 | 11 | 26 | 36 |
| Alaska | — | 0 | 1 | 1 | 1 | — | 0 | 3 | 3 | 1 | — | 0 | 1 | — | — |
| California | 1 | 12 | 48 | 184 | 463 | 2 | 8 | 26 | 135 | 130 | — | 1 | 11 | 20 | 36 |
| Hawaii | — | 0 | 2 | 2 | 6 | — | 0 | 1 | — | 2 | — | 0 | 0 | — | — |
| Oregon§ | — | 1 | 3 | 9 | 12 | — | 2 | 5 | 27 | 24 | 1 | 0 | 0 | 1 | — |
| Washington | — | 1 | 4 | 9 | 16 | — | 1 | 12 | 11 | 9 | — | 0 | 2 | 5 | — |
| American Samoa | U | 0 | 0 | U | U | U | 0 | 0 | U | U | U | 0 | 0 | U | U |
| C.N.M.I. | U | — | — | U | U | U | — | — | U | U | U | — | — | U | U |
| Guam | — | — | — | — | — | — | — | — | — | — | — | — | — | — | — |
| Puerto Rico | — | 1 | 10 | 15 | 16 | — | 1 | 9 | 15 | 7 | — | 0 | 1 | — | — |
| U.S. Virgin Islands | U | 0 | 0 | U | U | U | 0 | 0 | U | U | U | 0 | 0 | U | U |

C.N.M.I.: Commonwealth of Northern Mariana Islands.

U: Unavailable. —: No reported cases. N: Not notifiable. Cum: Cumulative year-to-date counts. Med: Median. Max: Maximum.

* Incidence data for reporting years 2006 and 2007 are provisional.

† Data for acute hepatitis C, viral are available in Table I.

§ Contains data reported through the National Electronic Disease Surveillance System (NEDSS).

TABLE II. (Continued) Provisional cases of selected notifiable diseases, United States, weeks ending April 28, 2007, and April 29, 2006 (17th Week)*

| Reporting area | Lyme disease | | | | | Malaria | | | | | Meningococcal disease, invasive† All serogroups | | | | |
|----------------------|--------------|-------------------|-------|----------|----------|--------------|-------------------|-----|----------|----------|--|-------------------|-----|----------|----------|
| | Current week | Previous 52 weeks | | Cum 2007 | Cum 2006 | Current week | Previous 52 weeks | | Cum 2007 | Cum 2006 | Current week | Previous 52 weeks | | Cum 2007 | Cum 2006 |
| | | Med | Max | | | | Med | Max | | | | Med | Max | | |
| United States | 41 | 253 | 1,029 | 1,693 | 1,866 | 9 | 25 | 50 | 213 | 339 | 13 | 19 | 38 | 354 | 478 |
| New England | — | 22 | 255 | 79 | 106 | — | 0 | 6 | 4 | 10 | 1 | 1 | 3 | 8 | 15 |
| Connecticut | — | 9 | 227 | 21 | 49 | — | 0 | 3 | — | 1 | 1 | 0 | 2 | 3 | 4 |
| Maine§ | — | 2 | 39 | 15 | 22 | — | 0 | 1 | 3 | 2 | — | 0 | 3 | 2 | 2 |
| Massachusetts | — | 0 | 3 | — | 23 | — | 0 | 3 | — | 6 | — | 0 | 1 | — | 9 |
| New Hampshire | — | 5 | 97 | 35 | 5 | — | 0 | 3 | 1 | — | — | 0 | 2 | — | — |
| Rhode Island§ | — | 0 | 93 | — | 1 | — | 0 | 1 | — | — | — | 0 | 1 | 1 | — |
| Vermont§ | — | 1 | 15 | 8 | 6 | — | 0 | 0 | — | 1 | — | 0 | 1 | 2 | — |
| Mid. Atlantic | 20 | 147 | 571 | 824 | 1,289 | 2 | 5 | 18 | 50 | 95 | 2 | 2 | 8 | 42 | 78 |
| New Jersey | — | 27 | 190 | 102 | 326 | — | 1 | 7 | — | 26 | — | 0 | 2 | 1 | 8 |
| New York (Upstate) | 10 | 52 | 392 | 233 | 516 | 2 | 1 | 7 | 15 | 8 | 2 | 1 | 4 | 11 | 13 |
| New York City | — | 2 | 24 | 6 | 17 | — | 2 | 9 | 29 | 50 | — | 1 | 4 | 10 | 29 |
| Pennsylvania | 10 | 45 | 237 | 483 | 430 | — | 1 | 4 | 6 | 11 | — | 0 | 5 | 20 | 28 |
| E.N. Central | — | 10 | 158 | 19 | 112 | 1 | 3 | 10 | 32 | 44 | 5 | 2 | 7 | 46 | 64 |
| Illinois | — | 0 | 1 | 1 | — | — | 1 | 6 | 10 | 16 | — | 0 | 2 | 10 | 17 |
| Indiana | — | 0 | 3 | 1 | 3 | — | 0 | 2 | 1 | 5 | 4 | 0 | 4 | 13 | 8 |
| Michigan | — | 1 | 5 | 6 | 3 | — | 0 | 2 | 7 | 6 | 1 | 0 | 3 | 11 | 12 |
| Ohio | — | 0 | 5 | 2 | 12 | 1 | 0 | 2 | 8 | 12 | — | 1 | 4 | 12 | 18 |
| Wisconsin | — | 9 | 154 | 9 | 94 | — | 0 | 3 | 6 | 5 | — | 0 | 2 | — | 9 |
| W.N. Central | 7 | 5 | 188 | 43 | 42 | — | 1 | 13 | 14 | 6 | — | 1 | 5 | 28 | 24 |
| Iowa | — | 1 | 8 | 6 | 8 | — | 0 | 1 | 2 | 1 | — | 0 | 3 | 7 | 6 |
| Kansas | — | 0 | 2 | 2 | — | — | 0 | 2 | — | — | — | 0 | 1 | 1 | 1 |
| Minnesota | 6 | 2 | 188 | 32 | 33 | — | 0 | 12 | 7 | 2 | — | 0 | 3 | 8 | 3 |
| Missouri | 1 | 0 | 2 | 3 | — | — | 0 | 1 | 2 | 1 | — | 0 | 3 | 9 | 8 |
| Nebraska§ | — | 0 | 2 | — | 1 | — | 0 | 1 | 2 | — | — | 0 | 1 | 1 | 5 |
| North Dakota | — | 0 | 0 | — | — | — | 0 | 0 | — | 1 | — | 0 | 1 | 1 | 1 |
| South Dakota | — | 0 | 1 | — | — | — | 0 | 1 | 1 | 1 | — | 0 | 1 | 1 | — |
| S. Atlantic | 14 | 44 | 135 | 675 | 279 | 3 | 5 | 15 | 53 | 90 | 1 | 3 | 9 | 52 | 84 |
| Delaware | 3 | 8 | 28 | 129 | 94 | — | 0 | 1 | 2 | 2 | — | 0 | 1 | — | 2 |
| District of Columbia | 1 | 0 | 7 | 3 | 7 | 1 | 0 | 2 | 2 | — | — | 0 | 1 | — | — |
| Florida | — | 0 | 3 | 10 | 7 | 1 | 1 | 4 | 14 | 14 | — | 1 | 7 | 22 | 34 |
| Georgia | — | 0 | 1 | — | 1 | — | 1 | 6 | 4 | 32 | — | 0 | 3 | 6 | 9 |
| Maryland§ | 7 | 21 | 105 | 431 | 155 | 1 | 1 | 4 | 17 | 12 | 1 | 0 | 2 | 13 | 5 |
| North Carolina | — | 0 | 4 | 6 | 8 | — | 0 | 4 | 4 | 10 | — | 0 | 6 | 4 | 14 |
| South Carolina§ | — | 0 | 2 | 4 | 1 | — | 0 | 2 | — | 4 | — | 0 | 2 | 5 | 9 |
| Virginia§ | 3 | 7 | 36 | 88 | 6 | — | 1 | 4 | 9 | 15 | — | 0 | 2 | 2 | 10 |
| West Virginia | — | 0 | 14 | 4 | — | — | 0 | 1 | 1 | 1 | — | 0 | 2 | — | 1 |
| E.S. Central | — | 0 | 4 | 7 | 2 | 1 | 0 | 3 | 10 | 8 | 2 | 1 | 4 | 18 | 16 |
| Alabama§ | — | 0 | 3 | 1 | 1 | — | 0 | 2 | 1 | 3 | — | 0 | 2 | 3 | 3 |
| Kentucky | — | 0 | 2 | — | — | — | 0 | 1 | 1 | 1 | — | 0 | 1 | 1 | 4 |
| Mississippi | — | 0 | 1 | — | — | — | 0 | 1 | 1 | 2 | — | 0 | 4 | 4 | 3 |
| Tennessee§ | — | 0 | 2 | 6 | 1 | 1 | 0 | 2 | 7 | 2 | 2 | 0 | 2 | 10 | 6 |
| W.S. Central | — | 1 | 6 | 10 | 2 | — | 1 | 7 | 3 | 15 | — | 1 | 13 | 36 | 29 |
| Arkansas§ | — | 0 | 0 | — | — | — | 0 | 2 | — | — | — | 0 | 2 | 5 | 5 |
| Louisiana | — | 0 | 1 | 2 | — | — | 0 | 1 | 1 | 1 | — | 0 | 4 | 9 | 4 |
| Oklahoma | — | 0 | 0 | — | — | — | 0 | 3 | 1 | 2 | — | 0 | 4 | 9 | 5 |
| Texas§ | — | 1 | 6 | 8 | 2 | — | 1 | 6 | 1 | 12 | — | 0 | 9 | 13 | 15 |
| Mountain | — | 0 | 4 | 4 | 3 | — | 1 | 6 | 11 | 18 | — | 1 | 4 | 32 | 32 |
| Arizona | — | 0 | 2 | — | 3 | — | 0 | 3 | 4 | 3 | — | 0 | 3 | 10 | 9 |
| Colorado | — | 0 | 1 | — | — | — | 0 | 2 | 4 | 6 | — | 0 | 2 | 8 | 11 |
| Idaho§ | — | 0 | 2 | 1 | — | — | 0 | 1 | — | — | — | 0 | 1 | 2 | 1 |
| Montana§ | — | 0 | 1 | 1 | — | — | 0 | 1 | 1 | 1 | — | 0 | 1 | 1 | 1 |
| Nevada§ | — | 0 | 1 | 2 | — | — | 0 | 1 | — | — | — | 0 | 1 | 3 | 3 |
| New Mexico§ | — | 0 | 1 | — | — | — | 0 | 1 | — | 1 | — | 0 | 1 | 1 | 1 |
| Utah | — | 0 | 1 | — | — | — | 0 | 2 | 2 | 7 | — | 0 | 2 | 6 | 4 |
| Wyoming§ | — | 0 | 1 | — | — | — | 0 | 0 | — | — | — | 0 | 2 | 1 | 2 |
| Pacific | — | 3 | 17 | 32 | 31 | 2 | 4 | 14 | 36 | 53 | 2 | 4 | 11 | 92 | 136 |
| Alaska | — | 0 | 1 | 2 | — | — | 0 | 4 | 2 | 4 | — | 0 | 1 | 1 | 2 |
| California | — | 3 | 14 | 30 | 31 | 1 | 2 | 6 | 26 | 42 | 2 | 3 | 9 | 64 | 89 |
| Hawaii | N | 0 | 0 | N | N | — | 0 | 2 | — | — | — | 0 | 2 | 2 | 4 |
| Oregon§ | — | 0 | 1 | — | — | 1 | 0 | 3 | 7 | 4 | — | 0 | 3 | 12 | 22 |
| Washington | — | 0 | 3 | — | — | — | 0 | 11 | 1 | 3 | — | 0 | 5 | 13 | 19 |
| American Samoa | U | 0 | 0 | U | U | U | 0 | 0 | U | U | U | 0 | 0 | — | — |
| C.N.M.I. | U | — | — | U | U | U | — | — | U | U | U | — | — | — | — |
| Guam | — | — | — | — | — | — | — | — | — | — | — | — | — | — | — |
| Puerto Rico | N | 0 | 0 | N | N | — | 0 | 1 | 1 | — | — | 0 | 1 | 3 | 2 |
| U.S. Virgin Islands | U | 0 | 0 | U | U | U | 0 | 0 | U | U | U | 0 | 0 | — | — |

C.N.M.I.: Commonwealth of Northern Mariana Islands.

U: Unavailable. —: Not reported cases. N: Not notifiable. Cum: Cumulative year-to-date counts. Med: Median. Max: Maximum.

* Incidence data for reporting years 2006 and 2007 are provisional.

† Data for meningococcal disease, invasive caused by serogroups A, C, Y, & W-135; serogroup B; other serogroup; and unknown serogroup are available in Table I.

§ Contains data reported through the National Electronic Disease Surveillance System (NEDSS).

TABLE II. (Continued) Provisional cases of selected notifiable diseases, United States, weeks ending April 28, 2007, and April 29, 2006 (17th Week)*

| Reporting area | Pertussis | | | | | Rabies, animal | | | | | Rocky Mountain spotted fever | | | | |
|----------------------|--------------|-------------------|-----|----------|----------|----------------|-------------------|-----|----------|----------|------------------------------|-------------------|-----|----------|----------|
| | Current week | Previous 52 weeks | | Cum 2007 | Cum 2006 | Current week | Previous 52 weeks | | Cum 2007 | Cum 2006 | Current week | Previous 52 weeks | | Cum 2007 | Cum 2006 |
| | | Med | Max | | | | Med | Max | | | | Med | Max | | |
| United States | 64 | 245 | 977 | 2,017 | 4,466 | 43 | 96 | 174 | 1,054 | 1,644 | 13 | 30 | 114 | 160 | 327 |
| New England | — | 16 | 54 | 75 | 464 | 7 | 11 | 25 | 135 | 189 | — | 0 | 8 | — | — |
| Connecticut | — | 2 | 9 | 15 | 24 | 5 | 4 | 14 | 47 | 40 | — | 0 | 0 | — | — |
| Maine† | — | 2 | 15 | 32 | 23 | 1 | 2 | 8 | 26 | 28 | N | 0 | 0 | N | N |
| Massachusetts | — | 0 | 22 | — | 344 | — | 0 | 7 | — | 96 | — | 0 | 1 | — | — |
| New Hampshire | — | 2 | 28 | 12 | 17 | 1 | 1 | 5 | 11 | — | — | 0 | 1 | — | — |
| Rhode Island† | — | 0 | 30 | — | 21 | — | 0 | 3 | 12 | 5 | — | 0 | 8 | — | — |
| Vermont† | — | 1 | 14 | 16 | 35 | — | 2 | 6 | 39 | 20 | — | 0 | 0 | — | — |
| Mid. Atlantic | 10 | 32 | 159 | 394 | 539 | 1 | 16 | 57 | 121 | 230 | — | 2 | 7 | 13 | 19 |
| New Jersey | — | 4 | 12 | 46 | 122 | — | 0 | 0 | — | — | — | 0 | 2 | — | 5 |
| New York (Upstate) | 4 | 20 | 150 | 238 | 182 | — | 0 | 0 | — | — | — | 0 | 2 | — | — |
| New York City | — | 0 | 6 | — | — | 1 | 1 | 5 | 24 | 1 | — | 0 | 3 | 4 | 2 |
| Pennsylvania | 6 | 9 | 22 | 110 | 235 | — | 16 | 56 | 97 | 229 | — | 1 | 4 | 9 | 12 |
| E.N. Central | 20 | 39 | 79 | 466 | 687 | — | 2 | 18 | 8 | 9 | 1 | 1 | 6 | 5 | 4 |
| Illinois | — | 9 | 23 | 50 | 176 | — | 0 | 7 | 3 | 1 | — | 0 | 4 | 1 | 1 |
| Indiana | 2 | 3 | 37 | 11 | 54 | — | 0 | 2 | — | — | 1 | 0 | 1 | 1 | 1 |
| Michigan | — | 10 | 39 | 102 | 135 | — | 0 | 5 | 4 | 8 | — | 0 | 1 | 1 | — |
| Ohio | 18 | 12 | 56 | 262 | 230 | — | 0 | 9 | 1 | — | — | 0 | 4 | 2 | 2 |
| Wisconsin | — | 3 | 10 | 41 | 92 | — | 0 | 0 | — | — | — | 0 | 1 | — | — |
| W.N. Central | 3 | 17 | 140 | 138 | 544 | 2 | 5 | 20 | 51 | 68 | 2 | 3 | 13 | 24 | 11 |
| Iowa | — | 4 | 16 | 39 | 143 | 1 | 1 | 7 | 7 | 9 | — | 0 | 1 | — | — |
| Kansas | — | 3 | 14 | 53 | 117 | — | 2 | 6 | 31 | 26 | — | 0 | 1 | — | — |
| Minnesota | — | 0 | 120 | — | 71 | — | 0 | 6 | 3 | 7 | — | 0 | 2 | — | 1 |
| Missouri | — | 4 | 10 | 21 | 142 | — | 1 | 6 | 3 | 6 | 2 | 3 | 12 | 24 | 10 |
| Nebraska† | — | 1 | 4 | 7 | 60 | — | 0 | 0 | — | — | — | 0 | 5 | — | — |
| North Dakota | 3 | 0 | 9 | 4 | 4 | — | 0 | 7 | 6 | 2 | — | 0 | 0 | — | — |
| South Dakota | — | 0 | 4 | 14 | 7 | 1 | 0 | 3 | 1 | 18 | — | 0 | 0 | — | — |
| S. Atlantic | 17 | 17 | 163 | 296 | 327 | 27 | 38 | 62 | 602 | 742 | 5 | 11 | 67 | 87 | 257 |
| Delaware | 1 | 0 | 1 | 2 | 2 | — | 0 | 0 | — | — | — | 0 | 3 | 4 | 4 |
| District of Columbia | — | 0 | 2 | 2 | 3 | — | 0 | 0 | — | — | 1 | 0 | 1 | 1 | — |
| Florida | 2 | 4 | 18 | 93 | 75 | — | 0 | 18 | 41 | 176 | 2 | 0 | 4 | 5 | 6 |
| Georgia | — | 0 | 3 | — | 8 | — | 4 | 16 | 36 | 76 | — | 0 | 5 | 2 | 4 |
| Maryland† | — | 2 | 7 | 42 | 63 | 7 | 5 | 12 | 93 | 122 | 1 | 1 | 6 | 14 | 6 |
| North Carolina | 12 | 0 | 112 | 91 | 70 | 8 | 11 | 21 | 149 | 108 | 1 | 4 | 61 | 46 | 228 |
| South Carolina† | — | 3 | 11 | 27 | 49 | — | 3 | 11 | 35 | 39 | — | 1 | 5 | 6 | 3 |
| Virginia† | — | 2 | 19 | 33 | 53 | 12 | 12 | 31 | 224 | 196 | — | 2 | 12 | 8 | 6 |
| West Virginia | 2 | 0 | 19 | 6 | 4 | — | 2 | 8 | 24 | 25 | — | 0 | 2 | 1 | — |
| E.S. Central | — | 6 | 24 | 70 | 85 | 1 | 4 | 13 | 28 | 63 | 5 | 5 | 27 | 30 | 24 |
| Alabama† | — | 1 | 17 | 21 | 21 | — | 1 | 8 | — | 19 | — | 1 | 9 | 6 | 6 |
| Kentucky | — | 0 | 5 | 1 | 14 | 1 | 0 | 4 | 7 | 4 | — | 0 | 1 | — | — |
| Mississippi | — | 0 | 7 | 7 | 10 | — | 0 | 1 | — | 3 | — | 0 | 1 | — | — |
| Tennessee† | — | 3 | 11 | 41 | 40 | — | 2 | 7 | 21 | 37 | 5 | 4 | 22 | 24 | 18 |
| W.S. Central | 1 | 16 | 147 | 92 | 195 | 2 | 2 | 34 | 27 | 249 | — | 1 | 28 | — | 5 |
| Arkansas† | — | 1 | 13 | 2 | 17 | 1 | 0 | 5 | 9 | 9 | — | 0 | 10 | — | 4 |
| Louisiana | — | 0 | 2 | 5 | 5 | — | 0 | 0 | — | — | — | 0 | 1 | — | — |
| Oklahoma | 1 | 0 | 9 | 1 | 2 | 1 | 0 | 9 | 18 | 11 | — | 0 | 18 | — | — |
| Texas† | — | 14 | 134 | 84 | 171 | — | 0 | 29 | — | 229 | — | 0 | 6 | — | 1 |
| Mountain | 10 | 36 | 75 | 399 | 1,072 | — | 3 | 28 | 25 | 42 | — | 0 | 5 | 1 | 6 |
| Arizona | 2 | 6 | 30 | 95 | 205 | — | 2 | 10 | 24 | 37 | — | 0 | 2 | — | 2 |
| Colorado | — | 8 | 20 | 102 | 417 | — | 0 | 0 | — | — | — | 0 | 1 | — | 1 |
| Idaho† | 3 | 1 | 7 | 15 | 27 | — | 0 | 24 | — | — | — | 0 | 3 | 1 | — |
| Montana† | — | 1 | 8 | 15 | 42 | — | 0 | 2 | — | 3 | — | 0 | 2 | — | — |
| Nevada† | — | 0 | 9 | 3 | 20 | — | 0 | 1 | — | — | — | 0 | 0 | — | — |
| New Mexico† | — | 2 | 8 | 13 | 29 | — | 0 | 2 | — | 2 | — | 0 | 2 | — | 2 |
| Utah | 5 | 10 | 50 | 144 | 306 | — | 0 | 1 | 1 | — | — | 0 | 0 | — | — |
| Wyoming† | — | 1 | 8 | 12 | 26 | — | 0 | 2 | — | — | — | 0 | 1 | — | 1 |
| Pacific | 3 | 33 | 229 | 87 | 553 | 3 | 4 | 12 | 57 | 52 | — | 0 | 1 | — | 1 |
| Alaska | — | 1 | 8 | 8 | 28 | 1 | 0 | 6 | 26 | 11 | N | 0 | 0 | N | N |
| California | — | 22 | 226 | — | 311 | 2 | 3 | 11 | 31 | 40 | — | 0 | 1 | — | — |
| Hawaii | — | 0 | 7 | 7 | 42 | N | 0 | 0 | N | N | N | 0 | 0 | N | N |
| Oregon† | — | 2 | 7 | 29 | 50 | — | 0 | 4 | — | 1 | — | 0 | 1 | — | 1 |
| Washington | 3 | 4 | 46 | 43 | 122 | — | 0 | 0 | — | — | N | 0 | 0 | N | N |
| American Samoa | U | 0 | 0 | U | U | U | 0 | 0 | U | U | U | 0 | 0 | U | U |
| C.N.M.I. | U | — | — | U | U | U | — | — | U | U | U | — | — | U | U |
| Guam | — | — | — | — | — | — | — | — | — | — | N | — | — | N | N |
| Puerto Rico | — | 0 | 1 | — | — | — | 1 | 6 | 17 | 32 | N | 0 | 0 | N | N |
| U.S. Virgin Islands | U | 0 | 0 | U | U | U | 0 | 0 | U | U | U | 0 | 0 | U | U |

C.N.M.I.: Commonwealth of Northern Mariana Islands.

U: Unavailable. —: No reported cases. N: Not notifiable. Cum: Cumulative year-to-date counts. Med: Median. Max: Maximum.

* Incidence data for reporting years 2006 and 2007 are provisional.

† Contains data reported through the National Electronic Disease Surveillance System (NEDSS).

TABLE II. (Continued) Provisional cases of selected notifiable diseases, United States, weeks ending April 28, 2007, and April 29, 2006 (17th Week)*

| Reporting area | Salmonellosis | | | | | Shiga toxin-producing <i>E. coli</i> (STEC) [†] | | | | | Shigellosis | | | | |
|-----------------------------|---------------|-------------------|-------|----------|----------|--|-------------------|-----|----------|----------|--------------|-------------------|-----|----------|----------|
| | Current week | Previous 52 weeks | | Cum 2007 | Cum 2006 | Current week | Previous 52 weeks | | Cum 2007 | Cum 2006 | Current week | Previous 52 weeks | | Cum 2007 | Cum 2006 |
| | | Med | Max | | | | Med | Max | | | | Med | Max | | |
| United States | 275 | 831 | 1,336 | 8,011 | 8,949 | 37 | 75 | 179 | 573 | 617 | 189 | 258 | 528 | 3,204 | 2,924 |
| New England | 4 | 18 | 82 | 162 | 831 | 1 | 2 | 16 | 23 | 106 | — | 2 | 14 | 23 | 126 |
| Connecticut | — | 0 | 68 | 68 | 503 | — | 0 | 5 | 5 | 84 | — | 0 | 8 | 8 | 67 |
| Maine [§] | — | 2 | 14 | 29 | 23 | 1 | 0 | 8 | 11 | 3 | — | 0 | 5 | 12 | — |
| Massachusetts | — | 0 | 53 | — | 267 | — | 0 | 9 | — | 16 | — | 0 | 11 | — | 54 |
| New Hampshire | 4 | 4 | 26 | 27 | 11 | — | 0 | 4 | 4 | — | — | 0 | 2 | 2 | — |
| Rhode Island [§] | — | 2 | 15 | 25 | 19 | — | 0 | 2 | 1 | 1 | — | 0 | 3 | 1 | 4 |
| Vermont [§] | — | 1 | 6 | 13 | 8 | — | 0 | 4 | 2 | 2 | — | 0 | 2 | — | 1 |
| Mid. Atlantic | 38 | 99 | 194 | 1,096 | 1,066 | 3 | 8 | 62 | 68 | 73 | 1 | 13 | 48 | 137 | 261 |
| New Jersey | — | 19 | 50 | 54 | 211 | — | 1 | 16 | 1 | 21 | — | 3 | 34 | 13 | 78 |
| New York (Upstate) | 27 | 28 | 93 | 354 | 210 | 3 | 3 | 14 | 30 | 21 | 1 | 3 | 43 | 35 | 76 |
| New York City | 2 | 24 | 50 | 277 | 293 | — | 0 | 4 | 5 | 8 | — | 5 | 14 | 68 | 77 |
| Pennsylvania | 9 | 30 | 67 | 411 | 352 | — | 3 | 47 | 32 | 23 | — | 1 | 6 | 21 | 30 |
| E.N. Central | 39 | 103 | 198 | 945 | 1,284 | 5 | 9 | 59 | 70 | 97 | 6 | 23 | 68 | 164 | 304 |
| Illinois | — | 26 | 61 | 120 | 369 | — | 1 | 7 | 5 | 15 | — | 10 | 50 | 19 | 106 |
| Indiana | 7 | 15 | 55 | 146 | 140 | — | 1 | 8 | 5 | 11 | 2 | 2 | 17 | 20 | 42 |
| Michigan | 6 | 18 | 35 | 184 | 221 | 1 | 1 | 6 | 14 | 21 | — | 2 | 5 | 10 | 72 |
| Ohio | 26 | 23 | 56 | 308 | 326 | 4 | 3 | 18 | 35 | 24 | 4 | 4 | 14 | 79 | 51 |
| Wisconsin | — | 17 | 27 | 187 | 228 | — | 2 | 39 | 11 | 26 | — | 3 | 10 | 36 | 33 |
| W.N. Central | 25 | 46 | 109 | 637 | 595 | 5 | 11 | 45 | 78 | 81 | 64 | 42 | 76 | 660 | 242 |
| Iowa | 1 | 8 | 26 | 94 | 105 | — | 2 | 38 | 12 | 13 | — | 2 | 14 | 18 | 9 |
| Kansas | — | 7 | 16 | 96 | 89 | — | 0 | 4 | 6 | 2 | — | 2 | 11 | 9 | 26 |
| Minnesota | 10 | 11 | 60 | 151 | 136 | 2 | 3 | 26 | 30 | 31 | 2 | 5 | 24 | 84 | 23 |
| Missouri | 14 | 15 | 35 | 210 | 166 | 1 | 3 | 13 | 18 | 24 | 61 | 14 | 68 | 526 | 131 |
| Nebraska [§] | — | 3 | 9 | 34 | 59 | 2 | 1 | 11 | 12 | 8 | — | 1 | 14 | 6 | 26 |
| North Dakota | — | 0 | 5 | 8 | 6 | — | 0 | 0 | — | — | — | 0 | 18 | 4 | 4 |
| South Dakota | — | 3 | 11 | 44 | 34 | — | 0 | 5 | — | 3 | 1 | 6 | 24 | 13 | 23 |
| S. Atlantic | 79 | 226 | 395 | 2,459 | 2,091 | 11 | 12 | 32 | 153 | 96 | 72 | 70 | 143 | 1,165 | 698 |
| Delaware | — | 2 | 10 | 22 | 23 | — | 0 | 3 | 4 | 1 | — | 0 | 2 | 4 | — |
| District of Columbia | — | 1 | 4 | 8 | 19 | — | 0 | 1 | — | — | 1 | 0 | 5 | 4 | 3 |
| Florida | 56 | 95 | 176 | 1,057 | 950 | 3 | 2 | 8 | 46 | 16 | 67 | 36 | 76 | 757 | 300 |
| Georgia | — | 34 | 66 | 408 | 287 | — | 1 | 7 | 16 | 16 | — | 24 | 54 | 318 | 248 |
| Maryland [§] | 9 | 14 | 32 | 175 | 91 | 3 | 2 | 9 | 28 | 8 | 1 | 1 | 10 | 23 | 17 |
| North Carolina | 2 | 29 | 130 | 377 | 373 | — | 2 | 11 | 23 | 21 | — | 1 | 14 | 19 | 65 |
| South Carolina [§] | 3 | 19 | 55 | 187 | 142 | — | 0 | 3 | 2 | 3 | 1 | 0 | 10 | 17 | 48 |
| Virginia [§] | 8 | 20 | 58 | 193 | 182 | 5 | 3 | 11 | 33 | 31 | 2 | 2 | 9 | 22 | 17 |
| West Virginia | 1 | 1 | 31 | 32 | 24 | — | 0 | 5 | 1 | — | — | 0 | 2 | 1 | — |
| E.S. Central | 24 | 53 | 138 | 523 | 463 | 3 | 4 | 21 | 28 | 43 | 10 | 12 | 75 | 226 | 192 |
| Alabama [§] | 7 | 9 | 70 | 128 | 147 | 1 | 0 | 5 | 5 | 4 | 8 | 4 | 66 | 87 | 38 |
| Kentucky | 8 | 9 | 23 | 123 | 94 | 1 | 1 | 12 | 9 | 12 | — | 2 | 15 | 29 | 100 |
| Mississippi | — | 12 | 62 | 62 | 91 | — | 0 | 0 | — | — | — | 1 | 45 | 45 | 26 |
| Tennessee [§] | 9 | 17 | 32 | 210 | 131 | 1 | 2 | 9 | 14 | 27 | 2 | 4 | 14 | 65 | 28 |
| W.S. Central | 13 | 84 | 186 | 319 | 735 | 2 | 3 | 52 | 31 | 28 | 23 | 38 | 192 | 318 | 375 |
| Arkansas [§] | 7 | 14 | 45 | 100 | 234 | — | 0 | 7 | 5 | 2 | 6 | 2 | 10 | 36 | 27 |
| Louisiana | — | 17 | 42 | 94 | 71 | — | 0 | 1 | — | — | — | 3 | 24 | 57 | 8 |
| Oklahoma | 6 | 9 | 40 | 89 | 61 | 1 | 0 | 17 | 8 | 2 | 1 | 2 | 9 | 16 | 28 |
| Texas [§] | — | 46 | 107 | 36 | 369 | 1 | 2 | 48 | 18 | 24 | 16 | 31 | 174 | 209 | 312 |
| Mountain | 21 | 52 | 87 | 627 | 615 | 4 | 8 | 36 | 64 | 64 | 7 | 26 | 87 | 201 | 227 |
| Arizona | 8 | 18 | 45 | 242 | 175 | 1 | 2 | 13 | 25 | 17 | 5 | 11 | 35 | 104 | 118 |
| Colorado | — | 12 | 30 | 143 | 170 | — | 1 | 8 | 9 | 16 | — | 3 | 15 | 30 | 32 |
| Idaho [§] | 2 | 3 | 9 | 37 | 41 | — | 1 | 8 | 4 | 10 | 1 | 0 | 3 | 4 | 6 |
| Montana [§] | — | 2 | 10 | 28 | 33 | — | 0 | 0 | — | — | — | 0 | 13 | 9 | 1 |
| Nevada [§] | — | 4 | 20 | 46 | 43 | — | 0 | 5 | 4 | 10 | — | 1 | 20 | 11 | 24 |
| New Mexico [§] | — | 5 | 15 | 46 | 56 | — | 1 | 5 | 9 | 5 | — | 2 | 15 | 25 | 31 |
| Utah | 9 | 4 | 14 | 65 | 77 | 3 | 1 | 14 | 13 | 5 | 1 | 1 | 4 | 6 | 12 |
| Wyoming [§] | 2 | 0 | 4 | 20 | 20 | — | 0 | 3 | — | 1 | — | 0 | 19 | 12 | 3 |
| Pacific | 32 | 116 | 306 | 1,243 | 1,269 | 3 | 5 | 24 | 58 | 29 | 6 | 32 | 94 | 310 | 499 |
| Alaska | — | 1 | 5 | 22 | 28 | N | 0 | 0 | N | N | — | 0 | 2 | 6 | 4 |
| California | 12 | 89 | 218 | 956 | 949 | — | 0 | 5 | 31 | N | 3 | 28 | 81 | 244 | 378 |
| Hawaii | 1 | 4 | 16 | 58 | 73 | — | 0 | 3 | 3 | 4 | — | 1 | 3 | 12 | 13 |
| Oregon [§] | 2 | 7 | 17 | 75 | 118 | — | 1 | 9 | 9 | 17 | — | 1 | 6 | 15 | 57 |
| Washington | 17 | 11 | 83 | 132 | 101 | 3 | 2 | 22 | 15 | 8 | 3 | 2 | 13 | 33 | 47 |
| American Samoa | U | 0 | 0 | U | U | U | 0 | 0 | U | U | U | 0 | 0 | U | U |
| C.N.M.I. | U | — | — | U | U | U | — | — | U | U | U | — | — | U | U |
| Guam | — | — | — | — | — | N | — | — | N | N | — | — | — | — | — |
| Puerto Rico | 3 | 14 | 65 | 131 | 75 | — | 0 | 0 | — | — | — | 0 | 6 | 5 | 3 |
| U.S. Virgin Islands | U | 0 | 0 | U | U | U | 0 | 0 | U | U | U | 0 | 0 | U | U |

C.N.M.I.: Commonwealth of Northern Mariana Islands.

U: Unavailable. —: No reported cases. N: Not notifiable. Cum: Cumulative year-to-date counts. Med: Median. Max: Maximum.

* Incidence data for reporting years 2006 and 2007 are provisional.

† Includes *E. coli* O157:H7; Shiga toxin-positive, serogroup non-O157; and Shiga toxin-positive, not serogrouped.

§ Contains data reported through the National Electronic Disease Surveillance System (NEDSS).

TABLE II. (Continued) Provisional cases of selected notifiable diseases, United States, weeks ending April 28, 2007, and April 29, 2006 (17th Week)*

| Reporting area | Streptococcal disease, invasive, group A | | | | | <i>Streptococcus pneumoniae</i> , invasive disease† Age <5 years | | | | |
|----------------------|--|-------------------|-----|----------|----------|---|-------------------|-----|----------|----------|
| | Current week | Previous 52 weeks | | Cum 2007 | Cum 2006 | Current week | Previous 52 weeks | | Cum 2007 | Cum 2006 |
| | | Med | Max | | | | Med | Max | | |
| United States | 70 | 88 | 217 | 1,729 | 2,167 | 28 | 24 | 93 | 502 | 453 |
| New England | 6 | 2 | 21 | 54 | 74 | — | 1 | 4 | 10 | 21 |
| Connecticut | 5 | 0 | 17 | 22 | — | — | 0 | 0 | — | — |
| Maine§ | — | 0 | 2 | 7 | 8 | — | 0 | 2 | — | — |
| Massachusetts | — | 0 | 5 | — | 56 | — | 0 | 4 | — | 21 |
| New Hampshire | 1 | 0 | 9 | 15 | 3 | — | 0 | 4 | 6 | — |
| Rhode Island§ | — | 0 | 6 | — | 4 | — | 0 | 3 | 3 | — |
| Vermont§ | — | 0 | 2 | 10 | 3 | — | 0 | 1 | 1 | — |
| Mid. Atlantic | 22 | 17 | 39 | 347 | 447 | 3 | 3 | 20 | 45 | 72 |
| New Jersey | — | 2 | 6 | 28 | 77 | — | 0 | 4 | — | 24 |
| New York (Upstate) | 16 | 5 | 26 | 132 | 135 | 3 | 2 | 14 | 45 | 48 |
| New York City | — | 3 | 9 | 71 | 86 | — | 0 | 3 | — | — |
| Pennsylvania | 6 | 6 | 11 | 116 | 149 | N | 0 | 0 | N | N |
| E.N. Central | 7 | 15 | 31 | 290 | 490 | 4 | 6 | 14 | 79 | 132 |
| Illinois | — | 4 | 11 | 63 | 153 | — | 1 | 6 | 9 | 33 |
| Indiana | 3 | 2 | 12 | 45 | 53 | — | 0 | 10 | 8 | 17 |
| Michigan | 1 | 3 | 10 | 74 | 107 | 1 | 1 | 5 | 34 | 31 |
| Ohio | 3 | 4 | 14 | 108 | 118 | 3 | 1 | 7 | 27 | 29 |
| Wisconsin | — | 1 | 6 | — | 59 | — | 0 | 2 | 1 | 22 |
| W.N. Central | 2 | 4 | 32 | 139 | 156 | 1 | 2 | 10 | 45 | 35 |
| Iowa | — | 0 | 0 | — | — | — | 0 | 0 | — | — |
| Kansas | — | 0 | 3 | 19 | 34 | — | 0 | 3 | 3 | 9 |
| Minnesota | — | 0 | 29 | 60 | 67 | 1 | 1 | 6 | 26 | 12 |
| Missouri | 1 | 2 | 6 | 41 | 28 | — | 0 | 3 | 12 | 8 |
| Nebraska§ | — | 0 | 2 | 7 | 16 | — | 0 | 2 | 3 | 4 |
| North Dakota | 1 | 0 | 2 | 9 | 6 | — | 0 | 1 | 1 | 2 |
| South Dakota | — | 0 | 2 | 3 | 5 | — | 0 | 0 | — | — |
| S. Atlantic | 15 | 20 | 42 | 423 | 421 | 8 | 2 | 11 | 100 | 22 |
| Delaware | — | 0 | 2 | 1 | 4 | — | 0 | 0 | — | — |
| District of Columbia | — | 0 | 2 | 4 | 4 | — | 0 | 1 | — | — |
| Florida | 5 | 6 | 16 | 101 | 101 | 5 | 0 | 5 | 26 | — |
| Georgia | — | 5 | 11 | 94 | 112 | — | 0 | 5 | 31 | — |
| Maryland§ | 5 | 4 | 10 | 77 | 51 | 3 | 1 | 6 | 30 | 17 |
| North Carolina | — | 0 | 26 | 51 | 61 | — | 0 | 0 | — | — |
| South Carolina§ | 1 | 1 | 5 | 33 | 31 | — | 0 | 3 | 9 | — |
| Virginia§ | 3 | 2 | 10 | 55 | 49 | — | 0 | 1 | 2 | — |
| West Virginia | 1 | 0 | 6 | 7 | 8 | — | 0 | 3 | 2 | 5 |
| E.S. Central | 5 | 4 | 11 | 71 | 95 | 1 | 0 | 6 | 29 | 6 |
| Alabama§ | N | 0 | 0 | N | N | N | 0 | 0 | N | N |
| Kentucky | 1 | 0 | 4 | 17 | 26 | — | 0 | 0 | — | — |
| Mississippi | N | 0 | 0 | N | N | — | 0 | 2 | 2 | 6 |
| Tennessee§ | 4 | 3 | 7 | 54 | 69 | 1 | 0 | 6 | 27 | — |
| W.S. Central | 8 | 6 | 61 | 120 | 166 | 7 | 4 | 39 | 95 | 71 |
| Arkansas§ | 1 | 0 | 2 | 11 | 14 | — | 0 | 2 | 7 | 12 |
| Louisiana | — | 0 | 2 | 3 | 2 | — | 0 | 4 | 18 | 2 |
| Oklahoma | 2 | 2 | 5 | 38 | 52 | 1 | 1 | 12 | 22 | 16 |
| Texas§ | 5 | 3 | 56 | 68 | 98 | 6 | 2 | 24 | 48 | 41 |
| Mountain | 4 | 12 | 42 | 245 | 287 | 4 | 4 | 12 | 87 | 91 |
| Arizona | 2 | 5 | 34 | 101 | 149 | 4 | 2 | 7 | 54 | 54 |
| Colorado | — | 3 | 9 | 67 | 49 | — | 1 | 4 | 19 | 21 |
| Idaho§ | — | 0 | 1 | 6 | 5 | — | 0 | 1 | 2 | 1 |
| Montana§ | N | 0 | 0 | N | N | N | 0 | 0 | N | N |
| Nevada§ | — | 0 | 1 | 1 | 1 | — | 0 | 1 | 1 | — |
| New Mexico§ | — | 1 | 6 | 19 | 57 | — | 0 | 4 | 11 | 15 |
| Utah | 2 | 1 | 7 | 48 | 24 | — | 0 | 0 | — | — |
| Wyoming§ | — | 0 | 1 | 3 | 2 | — | 0 | 0 | — | — |
| Pacific | 1 | 3 | 9 | 40 | 31 | — | 0 | 4 | 12 | 3 |
| Alaska | 1 | 0 | 2 | 9 | N | — | 0 | 2 | 10 | — |
| California | N | 0 | 0 | N | N | N | 0 | 0 | N | N |
| Hawaii | — | 2 | 9 | 31 | 31 | — | 0 | 2 | 2 | 3 |
| Oregon§ | N | 0 | 0 | N | N | N | 0 | 0 | N | N |
| Washington | N | 0 | 0 | N | N | N | 0 | 0 | N | N |
| American Samoa | U | 0 | 0 | U | U | U | 0 | 0 | U | U |
| C.N.M.I. | U | — | — | U | U | U | — | — | U | U |
| Guam | — | — | — | — | — | N | — | — | N | N |
| Puerto Rico | — | 0 | 0 | — | — | N | 0 | 0 | N | N |
| U.S. Virgin Islands | U | 0 | 0 | U | U | U | 0 | 0 | U | U |

C.N.M.I.: Commonwealth of Northern Mariana Islands.

U: Unavailable. —: No reported cases. N: Not notifiable. Cum: Cumulative year-to-date counts. Med: Median. Max: Maximum.

* Incidence data for reporting years 2006 and 2007 are provisional.

† Includes cases of invasive pneumococcal disease, in children aged <5 years, caused by *S. pneumoniae*, which is susceptible or for which susceptibility testing is not available (NNDS event code 11717).

§ Contains data reported through the National Electronic Disease Surveillance System (NEDSS).

TABLE II. (Continued) Provisional cases of selected notifiable diseases, United States, weeks ending April 28, 2007, and April 29, 2006 (17th Week)*

| Reporting area | <i>Streptococcus pneumoniae</i> , invasive disease, drug resistant† | | | | | | | | | | Syphilis, primary and secondary | | | | | |
|----------------------|---|-------------------|-----|----------|----------|--------------|-------------------|-----|----------|----------|---------------------------------|-------------------|-----|-------|----------|----------|
| | All ages | | | | | Age <5 years | | | | | Current week | Previous 52 weeks | | | Cum 2007 | Cum 2006 |
| | Current week | Previous 52 weeks | | Cum 2007 | Cum 2006 | Current week | Previous 52 weeks | | Cum 2007 | Cum 2006 | | Med | Max | | | |
| | | Med | Max | | | | Med | Max | | | | | | | | |
| United States | 31 | 43 | 242 | 939 | 1,046 | 6 | 6 | 32 | 137 | 142 | 91 | 182 | 262 | 2,570 | 2,864 | |
| New England | — | 1 | 7 | 21 | 14 | — | 0 | 1 | 2 | 2 | 9 | 4 | 13 | 65 | 64 | |
| Connecticut | — | 0 | 0 | — | — | — | 0 | 0 | — | — | 2 | 0 | 10 | 8 | 15 | |
| Maine§ | — | 0 | 2 | 4 | 3 | — | 0 | 1 | 1 | 1 | — | 0 | 1 | 1 | 3 | |
| Massachusetts | — | 0 | 0 | — | — | — | 0 | 0 | — | — | 5 | 2 | 7 | 39 | 34 | |
| New Hampshire | — | 0 | 0 | — | — | — | 0 | 0 | — | — | 2 | 0 | 2 | 7 | 5 | |
| Rhode Island§ | — | 0 | 4 | 8 | 3 | — | 0 | 1 | 1 | — | — | 0 | 5 | 9 | 5 | |
| Vermont§ | — | 0 | 2 | 9 | 8 | — | 0 | 1 | — | 1 | — | 0 | 1 | 1 | 2 | |
| Mid. Atlantic | — | 3 | 8 | 62 | 60 | — | 0 | 5 | 14 | 9 | 31 | 24 | 44 | 517 | 361 | |
| New Jersey | — | 0 | 0 | — | — | — | 0 | 0 | — | — | — | 3 | 8 | 57 | 59 | |
| New York (Upstate) | — | 1 | 5 | 21 | 17 | — | 0 | 4 | 7 | 4 | 4 | 3 | 14 | 41 | 51 | |
| New York City | — | 0 | 0 | — | — | — | 0 | 0 | — | — | 22 | 15 | 35 | 342 | 170 | |
| Pennsylvania | — | 2 | 6 | 41 | 43 | — | 0 | 2 | 7 | 5 | 5 | 5 | 12 | 77 | 81 | |
| E.N. Central | 20 | 10 | 40 | 244 | 237 | 4 | 1 | 7 | 29 | 40 | 3 | 15 | 32 | 172 | 294 | |
| Illinois | — | 0 | 2 | 3 | 8 | — | 0 | 1 | 1 | 3 | — | 6 | 13 | 35 | 167 | |
| Indiana | 3 | 2 | 30 | 51 | 49 | 2 | 0 | 5 | 5 | 11 | — | 2 | 5 | 15 | 26 | |
| Michigan | — | 0 | 3 | — | 9 | — | 0 | 1 | — | 1 | 2 | 2 | 10 | 39 | 28 | |
| Ohio | 17 | 5 | 38 | 190 | 171 | 2 | 1 | 5 | 23 | 25 | — | 4 | 9 | 67 | 60 | |
| Wisconsin | N | 0 | 0 | N | N | — | 0 | 0 | — | — | 1 | 1 | 4 | 16 | 13 | |
| W.N. Central | — | 1 | 124 | 40 | 17 | — | 0 | 15 | 5 | 1 | — | 5 | 13 | 50 | 79 | |
| Iowa | — | 0 | 0 | — | — | — | 0 | 0 | — | — | — | 0 | 3 | 1 | 6 | |
| Kansas | — | 0 | 1 | 4 | — | — | 0 | 0 | — | — | — | 0 | 3 | 7 | 9 | |
| Minnesota | — | 0 | 123 | — | — | — | 0 | 15 | — | — | — | 0 | 5 | 21 | 19 | |
| Missouri | — | 1 | 6 | 30 | 17 | — | 0 | 2 | 3 | 1 | — | 3 | 9 | 21 | 43 | |
| Nebraska§ | — | 0 | 1 | 2 | — | — | 0 | 0 | — | — | — | 0 | 2 | — | 2 | |
| North Dakota | — | 0 | 0 | — | — | — | 0 | 0 | — | — | — | 0 | 1 | — | — | |
| South Dakota | — | 0 | 3 | 4 | — | — | 0 | 1 | 2 | — | — | 0 | 3 | — | — | |
| S. Atlantic | 10 | 21 | 54 | 442 | 578 | 2 | 3 | 8 | 66 | 50 | 13 | 41 | 136 | 446 | 610 | |
| Delaware | — | 0 | 1 | 3 | — | — | 0 | 1 | 1 | — | — | 0 | 3 | 3 | 9 | |
| District of Columbia | — | 0 | 2 | 4 | 17 | — | 0 | 0 | — | 2 | 1 | 2 | 11 | 49 | 38 | |
| Florida | 5 | 11 | 29 | 254 | 268 | 2 | 2 | 8 | 60 | 47 | — | 13 | 23 | 68 | 228 | |
| Georgia | — | 6 | 17 | 157 | 254 | — | 0 | 1 | — | 1 | — | 6 | 105 | 20 | 54 | |
| Maryland§ | — | 0 | 1 | 1 | — | — | 0 | 0 | — | — | 4 | 5 | 15 | 102 | 108 | |
| North Carolina | — | 0 | 0 | — | — | — | 0 | 0 | — | — | 4 | 5 | 23 | 107 | 100 | |
| South Carolina§ | — | 0 | 0 | — | — | — | 0 | 0 | — | — | — | 1 | 5 | 29 | 25 | |
| Virginia§ | N | 0 | 0 | N | N | — | 0 | 0 | — | — | 4 | 4 | 17 | 66 | 47 | |
| West Virginia | 5 | 1 | 17 | 23 | 39 | — | 0 | 1 | 5 | — | — | 0 | 2 | 2 | 1 | |
| E.S. Central | 1 | 2 | 7 | 56 | 83 | — | 0 | 3 | 10 | 16 | 8 | 14 | 29 | 243 | 195 | |
| Alabama§ | N | 0 | 0 | N | N | — | 0 | 0 | — | — | 2 | 5 | 17 | 82 | 90 | |
| Kentucky | — | 0 | 2 | 12 | 21 | — | 0 | 1 | 1 | 3 | — | 1 | 7 | 29 | 28 | |
| Mississippi | — | 0 | 0 | — | — | — | 0 | 0 | — | — | — | 1 | 8 | 33 | 20 | |
| Tennessee§ | 1 | 2 | 7 | 44 | 62 | — | 0 | 3 | 9 | 13 | 6 | 6 | 12 | 99 | 57 | |
| W.S. Central | — | 1 | 7 | 50 | 9 | — | 0 | 2 | 5 | 3 | 24 | 29 | 56 | 485 | 446 | |
| Arkansas§ | — | 0 | 3 | 1 | 4 | — | 0 | 0 | — | 2 | 2 | 1 | 7 | 37 | 28 | |
| Louisiana | — | 1 | 2 | 17 | 5 | — | 0 | 1 | 2 | 1 | 5 | 6 | 30 | 101 | 62 | |
| Oklahoma | — | 0 | 6 | 32 | — | — | 0 | 2 | 3 | — | — | 1 | 5 | 27 | 23 | |
| Texas§ | — | 0 | 0 | — | — | — | 0 | 0 | — | — | 17 | 21 | 31 | 320 | 333 | |
| Mountain | — | 1 | 5 | 24 | 48 | — | 0 | 5 | 6 | 21 | — | 8 | 27 | 83 | 142 | |
| Arizona | — | 0 | 0 | — | — | — | 0 | 0 | — | — | — | 3 | 16 | 29 | 59 | |
| Colorado | — | 0 | 0 | — | — | — | 0 | 0 | — | — | — | 1 | 5 | 5 | 24 | |
| Idaho§ | N | 0 | 0 | N | N | — | 0 | 0 | — | — | — | 0 | 1 | 1 | 2 | |
| Montana§ | — | 0 | 0 | — | — | — | 0 | 0 | — | — | — | 0 | 1 | 1 | 1 | |
| Nevada§ | — | 0 | 3 | 13 | 12 | — | 0 | 2 | 3 | — | — | 1 | 12 | 19 | 32 | |
| New Mexico§ | — | 0 | 0 | — | — | — | 0 | 0 | — | — | — | 1 | 5 | 24 | 21 | |
| Utah | — | 0 | 5 | 8 | 21 | — | 0 | 4 | 2 | 15 | — | 0 | 2 | 3 | 3 | |
| Wyoming§ | — | 0 | 3 | 3 | 15 | — | 0 | 2 | 1 | 6 | — | 0 | 1 | 1 | — | |
| Pacific | — | 0 | 0 | — | — | — | 0 | 0 | — | — | 3 | 37 | 54 | 509 | 673 | |
| Alaska | — | 0 | 0 | — | — | — | 0 | 0 | — | — | — | 0 | 2 | 4 | 5 | |
| California | N | 0 | 0 | N | N | — | 0 | 0 | — | — | 2 | 34 | 51 | 457 | 585 | |
| Hawaii | — | 0 | 0 | — | — | — | 0 | 0 | — | — | — | 0 | 1 | 1 | 9 | |
| Oregon§ | N | 0 | 0 | N | N | — | 0 | 0 | — | — | — | 0 | 6 | 5 | 5 | |
| Washington | N | 0 | 0 | N | N | — | 0 | 0 | — | — | 1 | 2 | 11 | 42 | 69 | |
| American Samoa | U | 0 | 0 | U | U | U | 0 | 0 | U | U | U | 0 | 0 | U | U | |
| C.N.M.I. | U | — | — | U | U | U | — | — | U | U | U | — | — | U | U | |
| Guam | N | — | — | N | N | — | — | — | — | — | — | — | — | — | — | |
| Puerto Rico | N | 0 | 0 | N | N | — | 0 | 0 | — | — | 9 | 2 | 11 | 42 | 53 | |
| U.S. Virgin Islands | U | 0 | 0 | U | U | U | 0 | 0 | U | U | U | 0 | 0 | U | U | |

C.N.M.I.: Commonwealth of Northern Mariana Islands.

U: Unavailable. —: No reported cases. N: Not notifiable. Cum: Cumulative year-to-date counts. Med: Median. Max: Maximum.

* Incidence data for reporting years 2006 and 2007 are provisional.

† Includes cases of invasive pneumococcal disease caused by drug-resistant *S. pneumoniae* (DRSP) (NNDSS event code 11720).

§ Contains data reported through the National Electronic Disease Surveillance System (NEDSS).

TABLE II. (Continued) Provisional cases of selected notifiable diseases, United States, weeks ending April 28, 2007, and April 29, 2006 (17th Week)*

| Reporting area | Varicella (chickenpox) | | | | | West Nile virus disease† | | | | | | | | | |
|----------------------|------------------------|-------------------|-------|----------|----------|--------------------------|-----------------------|-----|--------------------|----------|--------------|-----------------------|-----|----------|----------|
| | Current week | Previous 52 weeks | | Cum 2007 | Cum 2006 | Neuroinvasive | | | Non-neuroinvasive§ | | | | | | |
| | | Med | Max | | | Current week | Previous 52 weeks Med | Max | Cum 2007 | Cum 2006 | Current week | Previous 52 weeks Med | Max | Cum 2007 | Cum 2006 |
| United States | 653 | 794 | 1,496 | 15,176 | 18,583 | — | 0 | 178 | — | 9 | — | 1 | 399 | — | 2 |
| New England | 7 | 21 | 74 | 231 | 496 | — | 0 | 3 | — | — | — | 0 | 2 | — | — |
| Connecticut | — | 0 | 0 | — | — | — | 0 | 3 | — | — | — | 0 | 1 | — | — |
| Maine¶ | — | 1 | 17 | — | 111 | — | 0 | 0 | — | — | — | 0 | 0 | — | — |
| Massachusetts | — | 0 | 1 | — | 92 | — | 0 | 1 | — | — | — | 0 | 1 | — | — |
| New Hampshire | 7 | 6 | 43 | 88 | 27 | — | 0 | 0 | — | — | — | 0 | 0 | — | — |
| Rhode Island¶ | — | 0 | 0 | — | — | — | 0 | 0 | — | — | — | 0 | 0 | — | — |
| Vermont¶ | — | 10 | 66 | 143 | 266 | — | 0 | 0 | — | — | — | 0 | 0 | — | — |
| Mid. Atlantic | 57 | 105 | 193 | 1,914 | 2,171 | — | 0 | 11 | — | — | — | 0 | 4 | — | — |
| New Jersey | N | 0 | 0 | N | N | — | 0 | 2 | — | — | — | 0 | 1 | — | — |
| New York (Upstate) | N | 0 | 0 | N | N | — | 0 | 5 | — | — | — | 0 | 1 | — | — |
| New York City | — | 0 | 0 | — | — | — | 0 | 4 | — | — | — | 0 | 2 | — | — |
| Pennsylvania | 57 | 105 | 193 | 1,914 | 2,171 | — | 0 | 2 | — | — | — | 0 | 1 | — | — |
| E.N. Central | 177 | 228 | 568 | 4,506 | 7,196 | — | 0 | 43 | — | — | — | 0 | 33 | — | — |
| Illinois | — | 1 | 10 | 54 | 44 | — | 0 | 23 | — | — | — | 0 | 23 | — | — |
| Indiana | — | 0 | 0 | — | — | — | 0 | 7 | — | — | — | 0 | 12 | — | — |
| Michigan | 50 | 89 | 258 | 1,746 | 2,091 | — | 0 | 11 | — | — | — | 0 | 2 | — | — |
| Ohio | 127 | 122 | 449 | 2,289 | 4,477 | — | 0 | 11 | — | — | — | 0 | 3 | — | — |
| Wisconsin | — | 17 | 64 | 417 | 584 | — | 0 | 2 | — | — | — | 0 | 2 | — | — |
| W.N. Central | 31 | 30 | 136 | 869 | 953 | — | 0 | 36 | — | — | — | 0 | 79 | — | — |
| Iowa | N | 0 | 0 | N | N | — | 0 | 3 | — | — | — | 0 | 4 | — | — |
| Kansas | — | 8 | 52 | 335 | 167 | — | 0 | 3 | — | — | — | 0 | 3 | — | — |
| Minnesota | — | 0 | 0 | — | — | — | 0 | 6 | — | — | — | 0 | 7 | — | — |
| Missouri | 18 | 15 | 78 | 409 | 739 | — | 0 | 14 | — | — | — | 0 | 2 | — | — |
| Nebraska¶ | N | 0 | 0 | N | N | — | 0 | 9 | — | — | — | 0 | 38 | — | — |
| North Dakota | — | 0 | 60 | 84 | 18 | — | 0 | 5 | — | — | — | 0 | 28 | — | — |
| South Dakota | 13 | 1 | 15 | 41 | 29 | — | 0 | 7 | — | — | — | 0 | 22 | — | — |
| S. Atlantic | 63 | 85 | 211 | 1,752 | 1,952 | — | 0 | 2 | — | — | — | 0 | 7 | — | — |
| Delaware | — | 1 | 6 | 11 | 38 | — | 0 | 0 | — | — | — | 0 | 0 | — | — |
| District of Columbia | — | 0 | 5 | — | 14 | — | 0 | 0 | — | — | — | 0 | 1 | — | — |
| Florida | 43 | 0 | 42 | 484 | N | — | 0 | 1 | — | — | — | 0 | 0 | — | — |
| Georgia | N | 0 | 0 | N | N | — | 0 | 1 | — | — | — | 0 | 4 | — | — |
| Maryland¶ | N | 0 | 0 | N | N | — | 0 | 2 | — | — | — | 0 | 2 | — | — |
| North Carolina | — | 0 | 0 | — | — | — | 0 | 1 | — | — | — | 0 | 0 | — | — |
| South Carolina¶ | 6 | 22 | 72 | 515 | 530 | — | 0 | 1 | — | — | — | 0 | 0 | — | — |
| Virginia¶ | — | 25 | 177 | 237 | 620 | — | 0 | 0 | — | — | — | 0 | 2 | — | — |
| West Virginia | 14 | 25 | 56 | 505 | 750 | — | 0 | 1 | — | — | — | 0 | 0 | — | — |
| E.S. Central | 6 | 5 | 43 | 134 | 34 | — | 0 | 15 | — | 3 | — | 0 | 16 | — | — |
| Alabama¶ | 6 | 5 | 43 | 132 | 34 | — | 0 | 2 | — | — | — | 0 | 0 | — | — |
| Kentucky | N | 0 | 0 | N | N | — | 0 | 2 | — | — | — | 0 | 1 | — | — |
| Mississippi | — | 0 | 2 | 2 | — | — | 0 | 10 | — | 3 | — | 0 | 16 | — | — |
| Tennessee¶ | N | 0 | 0 | N | N | — | 0 | 4 | — | — | — | 0 | 2 | — | — |
| W.S. Central | 295 | 200 | 966 | 4,623 | 4,398 | — | 0 | 58 | — | 4 | — | 0 | 26 | — | 2 |
| Arkansas¶ | — | 9 | 92 | 171 | 356 | — | 0 | 4 | — | — | — | 0 | 2 | — | — |
| Louisiana | — | 1 | 11 | 41 | 31 | — | 0 | 13 | — | — | — | 0 | 9 | — | 1 |
| Oklahoma | — | 0 | 0 | — | — | — | 0 | 6 | — | — | — | 0 | 4 | — | — |
| Texas¶ | 295 | 172 | 873 | 4,411 | 4,011 | — | 0 | 38 | — | 4 | — | 0 | 16 | — | 1 |
| Mountain | 17 | 55 | 105 | 1,127 | 1,383 | — | 0 | 61 | — | 2 | — | 1 | 228 | — | — |
| Arizona | — | 0 | 0 | — | — | — | 0 | 9 | — | — | — | 0 | 15 | — | — |
| Colorado | — | 22 | 51 | 417 | 712 | — | 0 | 10 | — | 2 | — | 0 | 51 | — | — |
| Idaho¶ | N | 0 | 0 | N | N | — | 0 | 30 | — | — | — | 0 | 157 | — | — |
| Montana¶ | — | 0 | 26 | 153 | N | — | 0 | 3 | — | — | — | 0 | 8 | — | — |
| Nevada¶ | — | 0 | 3 | — | 4 | — | 0 | 9 | — | — | — | 0 | 16 | — | — |
| New Mexico¶ | — | 4 | 19 | 123 | 262 | — | 0 | 1 | — | — | — | 0 | 1 | — | — |
| Utah | 17 | 18 | 65 | 421 | 393 | — | 0 | 8 | — | — | — | 0 | 17 | — | — |
| Wyoming¶ | — | 0 | 11 | 13 | 12 | — | 0 | 7 | — | — | — | 0 | 10 | — | — |
| Pacific | — | 0 | 9 | 20 | — | — | 0 | 15 | — | — | — | 0 | 51 | — | — |
| Alaska | — | 0 | 9 | 20 | N | — | 0 | 0 | — | — | — | 0 | 0 | — | — |
| California | — | 0 | 0 | — | N | — | 0 | 15 | — | — | — | 0 | 37 | — | — |
| Hawaii | — | 0 | 0 | — | — | — | 0 | 0 | — | — | — | 0 | 0 | — | — |
| Oregon¶ | N | 0 | 0 | N | N | — | 0 | 2 | — | — | — | 0 | 14 | — | — |
| Washington | N | 0 | 0 | N | N | — | 0 | 0 | — | — | — | 0 | 2 | — | — |
| American Samoa | U | 0 | 0 | U | U | U | 0 | 0 | U | U | U | 0 | 0 | U | U |
| C.N.M.I. | U | — | — | U | U | U | — | — | U | U | U | — | — | U | U |
| Guam | — | — | — | — | — | — | — | — | — | — | — | — | — | — | — |
| Puerto Rico | 2 | 12 | 24 | 176 | 199 | — | 0 | 0 | — | — | — | 0 | 0 | — | — |
| U.S. Virgin Islands | U | 0 | 0 | U | U | U | 0 | 0 | U | U | U | 0 | 0 | U | U |

C.N.M.I.: Commonwealth of Northern Mariana Islands.
 U: Unavailable. —: No reported cases. N: Not notifiable. Cum: Cumulative year-to-date counts. Med: Median. Max: Maximum.
 † Incidence data for reporting years 2006 and 2007 are provisional.
 ‡ Updated weekly from reports to the Division of Vector-Borne Infectious Diseases, National Center for Zoonotic, Vector-Borne, and Enteric Diseases (ArboNET Surveillance). Data for California serogroup, eastern equine, Powassan, St. Louis, and western equine diseases are available in Table I.
 § Not notifiable in all states. Data from states where the condition is not notifiable are excluded from this table, except in 2007 for the domestic arboviral diseases and influenza-associated pediatric mortality, and in 2003 for SARS-CoV. Reporting exceptions are available at <http://www.cdc.gov/epo/dphsi/phs/infdis.htm>.
 ¶ Contains data reported through the National Electronic Disease Surveillance System (NEDSS).

TABLE III. Deaths in 122 U.S. cities,* week ending April 28, 2007 (17th Week)

| Reporting Area | All causes, by age (years) | | | | | | | Reporting Area | All causes, by age (years) | | | | | | |
|-----------------------------|----------------------------|-------|-------|-------|------|----|------------------------|------------------------------|----------------------------|-------|-------|-------|------|-----|------------------------|
| | All Ages | ≥65 | 45-64 | 25-44 | 1-24 | <1 | P&I [†] Total | | All Ages | ≥65 | 45-64 | 25-44 | 1-24 | <1 | P&I [†] Total |
| New England | 578 | 410 | 108 | 38 | 14 | 8 | 66 | S. Atlantic | 1,339 | 819 | 329 | 116 | 42 | 33 | 65 |
| Boston, MA | 133 | 83 | 31 | 7 | 8 | 4 | 16 | Atlanta, GA | 66 | 36 | 17 | 8 | 3 | 2 | — |
| Bridgeport, CT | 39 | 30 | 4 | 4 | 1 | — | 1 | Baltimore, MD | 147 | 74 | 48 | 14 | 8 | 3 | 13 |
| Cambridge, MA | 14 | 13 | — | 1 | — | — | — | Charlotte, NC | 118 | 74 | 33 | 6 | 4 | 1 | 11 |
| Fall River, MA | 17 | 12 | 3 | 2 | — | — | 4 | Jacksonville, FL | 312 | 199 | 72 | 22 | 11 | 8 | 13 |
| Hartford, CT | 58 | 40 | 12 | 4 | 1 | 1 | 11 | Miami, FL | 132 | 82 | 30 | 14 | 4 | 2 | 4 |
| Lowell, MA | 29 | 20 | 7 | 2 | — | — | 4 | Norfolk, VA | 51 | 27 | 13 | 5 | 1 | 5 | 3 |
| Lynn, MA | 15 | 9 | 4 | 2 | — | — | 2 | Richmond, VA | 59 | 35 | 14 | 6 | 2 | 2 | 4 |
| New Bedford, MA | 28 | 21 | 6 | 1 | — | — | 7 | Savannah, GA | 66 | 52 | 10 | 2 | 1 | 1 | 1 |
| New Haven, CT | 46 | 30 | 11 | 3 | 2 | — | 5 | St. Petersburg, FL | 53 | 25 | 17 | 5 | 3 | 3 | 4 |
| Providence, RI | 64 | 47 | 11 | 4 | — | 2 | 5 | Tampa, FL | 215 | 134 | 52 | 23 | 3 | 3 | 11 |
| Somerville, MA | 5 | 1 | 2 | 2 | — | — | — | Washington, D.C. | 107 | 71 | 21 | 10 | 2 | 3 | 1 |
| Springfield, MA | 46 | 33 | 8 | 3 | 1 | 1 | 3 | Wilmington, DE | 13 | 10 | 2 | 1 | — | — | — |
| Waterbury, CT | 24 | 19 | 4 | 1 | — | — | 5 | E.S. Central | 800 | 532 | 187 | 42 | 25 | 14 | 59 |
| Worcester, MA | 60 | 52 | 5 | 2 | 1 | — | 3 | Birmingham, AL | 160 | 111 | 36 | 6 | 5 | 2 | 14 |
| Mid. Atlantic | 2,410 | 1,667 | 518 | 132 | 52 | 41 | 135 | Chattanooga, TN | 84 | 60 | 15 | 8 | — | 1 | 5 |
| Albany, NY | 51 | 26 | 14 | 7 | 3 | 1 | 1 | Knoxville, TN | 71 | 41 | 21 | 5 | 2 | 2 | 7 |
| Allentown, PA | 22 | 16 | 5 | — | 1 | — | — | Lexington, KY | 71 | 51 | 14 | 3 | 1 | 2 | 2 |
| Buffalo, NY | 78 | 46 | 26 | 3 | 1 | 2 | 8 | Memphis, TN | 153 | 95 | 46 | 6 | 4 | 2 | 5 |
| Camden, NJ | 33 | 18 | 10 | 1 | 1 | 3 | — | Mobile, AL | 68 | 48 | 14 | 4 | 2 | — | 8 |
| Elizabeth, NJ | 18 | 12 | 3 | 2 | 1 | — | 3 | Montgomery, AL | 38 | 21 | 10 | 1 | 4 | 2 | 5 |
| Erie, PA | 57 | 39 | 13 | 2 | 2 | 1 | 6 | Nashville, TN | 155 | 105 | 31 | 9 | 7 | 3 | 13 |
| Jersey City, NJ | 15 | 11 | 2 | 2 | — | — | 1 | W.S. Central | 1,543 | 1,004 | 371 | 94 | 32 | 42 | 84 |
| New York City, NY | 1,114 | 797 | 238 | 51 | 20 | 8 | 45 | Austin, TX | 91 | 49 | 23 | 11 | 1 | 7 | 10 |
| Newark, NJ | 72 | 34 | 19 | 7 | 2 | 10 | 5 | Baton Rouge, LA | 40 | 30 | 8 | 2 | — | — | — |
| Paterson, NJ | 20 | 8 | 10 | 1 | 1 | — | — | Corpus Christi, TX | 56 | 41 | 7 | 6 | — | 2 | 9 |
| Philadelphia, PA | 469 | 310 | 94 | 37 | 15 | 13 | 26 | Dallas, TX | 196 | 122 | 51 | 12 | 6 | 5 | 14 |
| Pittsburgh, PA [‡] | 37 | 29 | 6 | 1 | 1 | — | 3 | El Paso, TX | 192 | 144 | 34 | 9 | 5 | — | 2 |
| Reading, PA | 41 | 32 | 7 | 2 | — | — | 5 | Fort Worth, TX | 138 | 92 | 35 | 4 | 1 | 6 | 6 |
| Rochester, NY | 154 | 116 | 26 | 6 | 3 | 3 | 8 | Houston, TX | 326 | 190 | 89 | 23 | 11 | 13 | 11 |
| Schenectady, NY | 14 | 11 | 3 | — | — | — | — | Little Rock, AR | 57 | 33 | 17 | 2 | 1 | 4 | 2 |
| Scranton, PA | 30 | 26 | 2 | 2 | — | — | 1 | New Orleans, LA [¶] | U | U | U | U | U | U | U |
| Syracuse, NY | 124 | 88 | 29 | 6 | 1 | — | 20 | San Antonio, TX | 229 | 161 | 48 | 11 | 6 | 3 | 15 |
| Trenton, NJ | 21 | 14 | 5 | 2 | — | — | 1 | Shreveport, LA | 109 | 77 | 26 | 4 | — | 2 | 11 |
| Utica, NY | 14 | 13 | 1 | — | — | — | 1 | Tulsa, OK | 109 | 65 | 33 | 10 | 1 | — | 4 |
| Yonkers, NY | 26 | 21 | 5 | — | — | — | 1 | Mountain | 1,216 | 807 | 259 | 91 | 28 | 29 | 83 |
| E.N. Central | 2,242 | 1,464 | 545 | 128 | 51 | 54 | 137 | Albuquerque, NM | 172 | 111 | 44 | 12 | 3 | 2 | 12 |
| Akron, OH | 53 | 36 | 13 | 1 | 2 | 1 | 3 | Boise, ID | 73 | 52 | 15 | 5 | — | 1 | 2 |
| Canton, OH | 47 | 32 | 15 | — | — | — | 3 | Colorado Springs, CO | 111 | 81 | 22 | 7 | — | 1 | 6 |
| Chicago, IL | 409 | 244 | 118 | 26 | 11 | 10 | 34 | Denver, CO | 93 | 54 | 28 | 6 | 1 | 4 | 9 |
| Cincinnati, OH | 97 | 56 | 31 | 7 | 3 | — | 17 | Las Vegas, NV | 273 | 180 | 60 | 26 | 3 | 4 | 19 |
| Cleveland, OH | 233 | 168 | 46 | 10 | 3 | 6 | 4 | Ogden, UT | 31 | 24 | 2 | 3 | 1 | 1 | 3 |
| Columbus, OH | 209 | 127 | 57 | 13 | 6 | 6 | 13 | Phoenix, AZ | 179 | 99 | 39 | 17 | 12 | 10 | 12 |
| Dayton, OH | 135 | 92 | 29 | 6 | 4 | 4 | 16 | Pueblo, CO | 40 | 27 | 11 | 1 | 1 | — | 4 |
| Detroit, MI | 163 | 96 | 54 | 9 | 3 | 1 | 7 | Salt Lake City, UT | 120 | 84 | 18 | 8 | 5 | 5 | 11 |
| Evansville, IN | 34 | 24 | 4 | 5 | 1 | — | 1 | Tucson, AZ | 124 | 95 | 20 | 6 | 2 | 1 | 5 |
| Fort Wayne, IN | 77 | 55 | 13 | 4 | — | 5 | 2 | Pacific | 1,398 | 983 | 283 | 82 | 28 | 22 | 99 |
| Gary, IN | 23 | 6 | 11 | 2 | 1 | 3 | — | Berkeley, CA | 11 | 8 | 3 | — | — | — | 1 |
| Grand Rapids, MI | 54 | 35 | 11 | 5 | — | 3 | 4 | Fresno, CA | 64 | 49 | 13 | — | 2 | — | 5 |
| Indianapolis, IN | 217 | 139 | 48 | 14 | 9 | 7 | 10 | Glendale, CA | U | U | U | U | U | U | U |
| Lansing, MI | 52 | 36 | 13 | 1 | — | 2 | 3 | Honolulu, HI | 81 | 55 | 19 | 4 | 2 | 1 | 9 |
| Milwaukee, WI | 100 | 65 | 27 | 4 | 2 | 2 | 2 | Long Beach, CA | 54 | 39 | 8 | 4 | 3 | — | 8 |
| Peoria, IL | 61 | 43 | 10 | 7 | — | 1 | 5 | Los Angeles, CA | U | U | U | U | U | U | U |
| Rockford, IL | 43 | 35 | 3 | 3 | 1 | 1 | 1 | Pasadena, CA | 57 | 42 | 12 | 2 | — | 1 | 7 |
| South Bend, IN | 50 | 37 | 9 | 3 | 1 | — | 1 | Portland, OR | 147 | 96 | 32 | 9 | 4 | 6 | 10 |
| Toledo, OH | 120 | 83 | 25 | 7 | 4 | 1 | 8 | Sacramento, CA | 190 | 127 | 46 | 10 | 3 | 4 | 7 |
| Youngstown, OH | 65 | 55 | 8 | 1 | — | 1 | 3 | San Diego, CA | 150 | 101 | 30 | 13 | 1 | 5 | 10 |
| W.N. Central | 584 | 387 | 128 | 36 | 17 | 15 | 41 | San Francisco, CA | 110 | 78 | 27 | 4 | 1 | — | 12 |
| Des Moines, IA | 57 | 49 | 6 | 2 | — | — | 6 | San Jose, CA | 183 | 139 | 25 | 16 | 2 | 1 | 15 |
| Duluth, MN | 23 | 17 | 6 | — | — | — | 2 | Santa Cruz, CA | 35 | 24 | 9 | 1 | 1 | — | 1 |
| Kansas City, KS | 21 | 12 | 6 | 2 | 1 | — | — | Seattle, WA | 135 | 91 | 28 | 10 | 3 | 3 | 6 |
| Kansas City, MO | 120 | 82 | 25 | 6 | 3 | 4 | 8 | Spokane, WA | 62 | 45 | 12 | 2 | 2 | 1 | 1 |
| Lincoln, NE | 27 | 19 | 6 | 2 | — | — | 2 | Tacoma, WA | 119 | 89 | 19 | 7 | 4 | — | 7 |
| Minneapolis, MN | 54 | 24 | 16 | 6 | 3 | 5 | 4 | Total | 12,110** | 8,073 | 2,728 | 759 | 289 | 258 | 769 |
| Omaha, NE | 67 | 48 | 14 | 3 | 1 | 1 | 2 | | | | | | | | |
| St. Louis, MO | 91 | 47 | 24 | 9 | 7 | 3 | 5 | | | | | | | | |
| St. Paul, MN | 59 | 45 | 12 | 2 | — | — | 9 | | | | | | | | |
| Wichita, KS | 65 | 44 | 13 | 4 | 2 | 2 | 3 | | | | | | | | |

U: Unavailable. —: No reported cases.

* Mortality data in this table are voluntarily reported from 122 cities in the United States, most of which have populations of ≥100,000. A death is reported by the place of its occurrence and by the week that the death certificate was filed. Fetal deaths are not included.

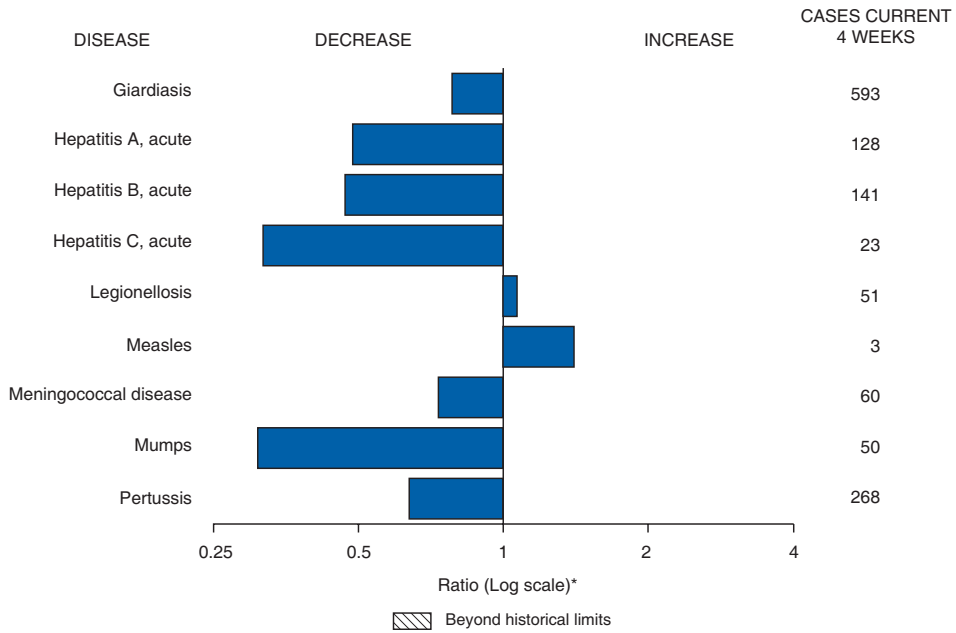
† Pneumonia and influenza.

‡ Because of changes in reporting methods in this Pennsylvania city, these numbers are partial counts for the current week. Complete counts will be available in 4 to 6 weeks.

¶ Because of Hurricane Katrina, weekly reporting of deaths has been temporarily disrupted.

** Total includes unknown ages.

FIGURE I. Selected notifiable disease reports, United States, comparison of provisional 4-week totals April 28, 2007, with historical data



* Ratio of current 4-week total to mean of 15 4-week totals (from previous, comparable, and subsequent 4-week periods for the past 5 years). The point where the hatched area begins is based on the mean and two standard deviations of these 4-week totals.

Notifiable Disease Data Team and 122 Cities Mortality Data Team

Patsy A. Hall

Deborah A. Adams

Rosaline Dhara

Willie J. Anderson

Vernitta Love

Lenee Blanton

Pearl C. Sharp

The *Morbidity and Mortality Weekly Report (MMWR)* Series is prepared by the Centers for Disease Control and Prevention (CDC) and is available free of charge in electronic format. To receive an electronic copy each week, send an e-mail message to listserv@listserv.cdc.gov. The body content should read *SUBscribe mmwr-toc*. Electronic copy also is available from CDC's Internet server at <http://www.cdc.gov/mmwr> or from CDC's file transfer protocol server at <ftp://ftp.cdc.gov/pub/publications/mmwr>. Paper copy subscriptions are available through the Superintendent of Documents, U.S. Government Printing Office, Washington, DC 20402; telephone 202-512-1800.

Data in the weekly *MMWR* are provisional, based on weekly reports to CDC by state health departments. The reporting week concludes at close of business on Friday; compiled data on a national basis are officially released to the public on the following Friday. Data are compiled in the National Center for Public Health Informatics, Division of Integrated Surveillance Systems and Services. Address all inquiries about the *MMWR* Series, including material to be considered for publication, to Editor, *MMWR* Series, Mailstop E-90, CDC, 1600 Clifton Rd., N.E., Atlanta, GA 30333 or to www.mmwrq@cdc.gov.

All material in the *MMWR* Series is in the public domain and may be used and reprinted without permission; citation as to source, however, is appreciated.

Use of trade names and commercial sources is for identification only and does not imply endorsement by the U.S. Department of Health and Human Services.

References to non-CDC sites on the Internet are provided as a service to *MMWR* readers and do not constitute or imply endorsement of these organizations or their programs by CDC or the U.S. Department of Health and Human Services. CDC is not responsible for the content of these sites. URL addresses listed in *MMWR* were current as of the date of publication.