

Kootenai National Forest

FY11 Native Plant Material Accomplishments

Using FY11 NFN3 funds we accomplished the following:

- Completed 5-and10 Year Seed Procurement Plans (draft) and reviewed forest seed mixes for compliance with the national Native Plant Policy (2008).
- Reconnaissance, assessment, and mapping of multiple wildland seed collection sites across the forest from a wide range of drainages, habitats, and elevations.
- Collected wildland native grass seed for grow out and increase to implement the forest's Seed Procurement Plan.
- Obligated \$12,400 to Coeur d'Alene Nursery for seed processing, grow-out and increase for the next three years.

Using other appropriated dollars or federal funds, the forest accomplished the following:

- Sowed approximately 300 pounds of native or native-variety grass seed on roadsides, landings, culvert removals, and other ground-disturbing activity areas requiring erosion and weed-control ground cover. The species list developed by the Forest's Native Plant Coordinator.

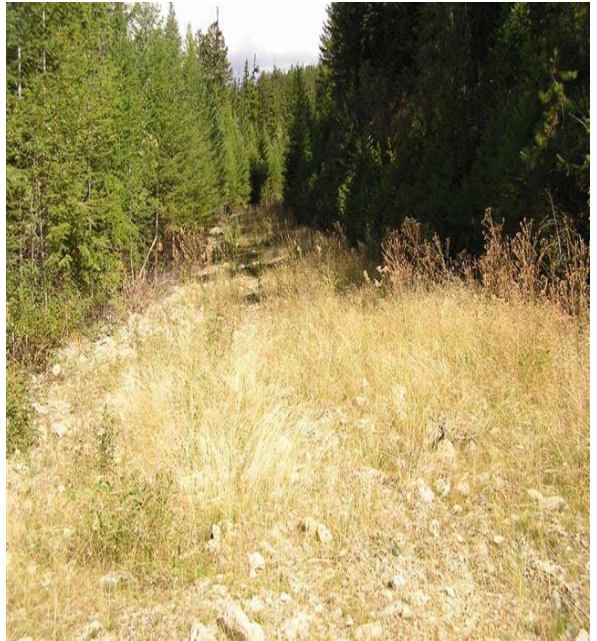


Figure 1. Native seed revegetation on decommissioned road



Figure 2. Its always good to have a faithful companion for a weekend native seed reconnaissance trip

Year awarded: 2011

Project completion: ongoing

FY11 expenditures: \$13,200 (NFN3)

Partners/contractors/coop:
Native Plant Program Manager
Regional Geneticist
USFS Coeur d'Alene Nursery

Contact: Deb Bond
406-283-7579
dbond01@fs.fed.us



Libby Ranger District
12557 HWY 37 N
Libby, MT 59923