



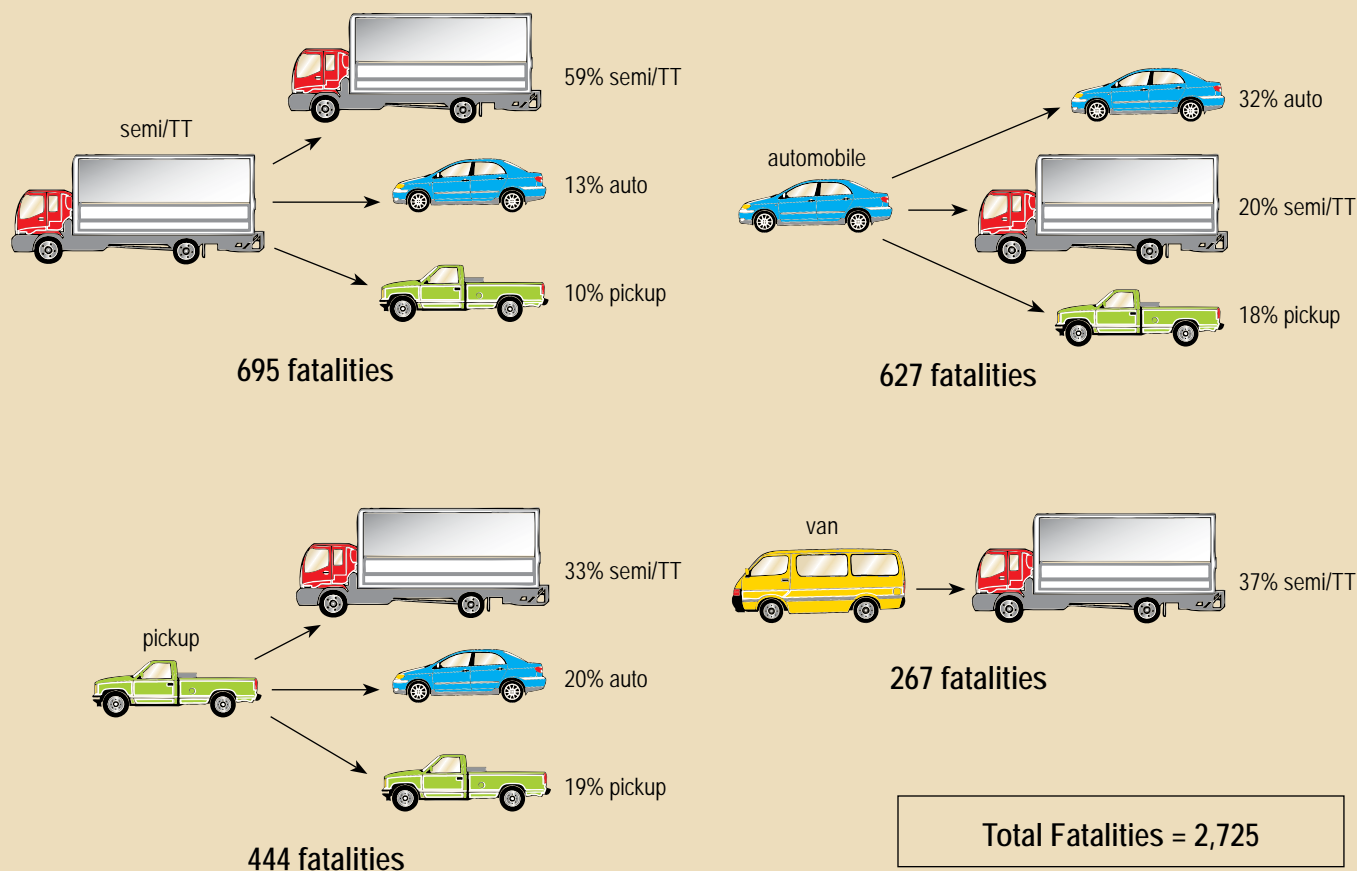
Of the 5,544 fatal occupational injuries resulting from highway incidents during 2003–06, 49 percent involved multivehicle collisions.

During the 4 years, occupants of semitrailer, tractor-trailer, and trailer trucks (semi/TTs) experienced 695 fatalities involving multivehicle collisions. More than half of these fatalities involved collisions with other semi- and tractor-trailers.

Occupants of automobiles experienced 627 fatalities in multivehicle collisions. About one-third of these deaths resulted from collisions with other automobiles. For fatally injured occupants of pickup trucks, vans, delivery trucks, and dump trucks, the most common vehicle collisions involved semi- or tractor-trailers.

Note that collisions can occur between a variety of vehicles and mobile equipment, including, but not limited to, semitrailer, tractor-trailer, and trailer trucks, pickup trucks, vans, delivery trucks, dump trucks, buses, and motorcycles.

Highway collisions between vehicles and other mobile equipment, 2003–06



SOURCE: U.S. Bureau of Labor Statistics, U.S. Department of Labor, 2009.

[Table of Contents](#)

[Next Chart](#)