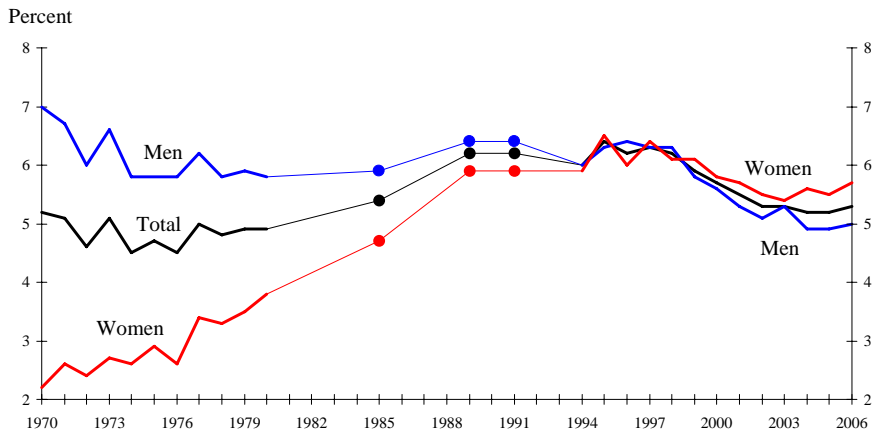


Chart 3-2. About 1 in 20 workers has more than one job



NOTE: Data are for May of each year. Beginning in 1994, data reflect the introduction of a major redesign of the Current Population Survey. Comprehensive surveys of multiple jobholders were not conducted in 1981-84, 1986-88, 1990, and 1992-93.

SOURCE: Bureau of Labor Statistics

Chart 3-2. About 1 in 20 workers has more than one job

- In May 2006, about 7.6 million workers held more than one job, representing 5.3 percent of all employed persons.
- For women, the multiple jobholding rate rose markedly from 1970 through the end of the 1980s, while the rate for men changed little over this period. For the last several years, women have been somewhat more likely than men to work more than one job.