

FP&L St. Lucie Nuclear Power Plant License Renewal

James P. Vojcsik, Executive Director
United Way of Martin County
April 3, 2002

My name is James Vojcsik and I have lived in this area since 1999. I am the Executive Director of the United Way of Martin County and I am speaking tonight on behalf of my organization in support of the license renewal for Florida Power & Light's St. Lucie Nuclear Power Plant to ensure that the community's voice is heard.

This power plant is an important source of energy for our community. Demands for energy in communities on the Treasure Coast are growing annually and we need the power from the St. Lucie Nuclear Plant to meet our needs for electricity. The St. Lucie Power Plant supplies us with an available source of low cost electricity, the plant is already here and we can use it as a resource to meet the community's energy needs.

Renewing the St. Lucie Plant operations for the next 20 years is about planning for the future. But this renewal is not only about ensuring the future of this plant, it is also about ensuring the future of our communities. There are vital connections that link the St. Lucie Power Plant to our local economies, to a cleaner environment and to the network of social, educational and recreational organizations that are important to our quality of life.

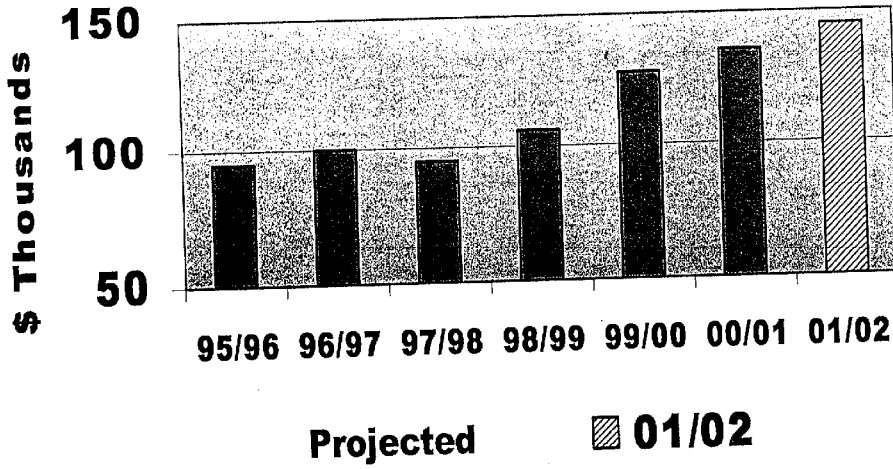
The St. Lucie Nuclear Plant is a good neighbor. The employees at the plant donate their time and money to making our communities better places to live. They are involved as volunteers with scouting and youth sports programs, their churches, civic organizations and communities where they live. They contribute hundreds of thousands of dollars each year to local charitable organizations through their participation in various United Way Campaigns on the Treasure Coast. The St. Lucie Power Plant annually conducts one of the most successful and spirited employee fundraising efforts on the Treasure Coast. Recently, the United Way of Martin County recognized an employee at the power plant as one of our outstanding volunteers of the year.

As one of the largest employers in our area, the St. Lucie Power Plant is important to our local economy. A business of this size would be very difficult to replace. The plant's payroll, purchases and property taxes supply the revenue our local governments need to provide the services on which we depend.

In conclusion, because the St. Lucie Power Plant is important to our community, is a good neighbor, has a good environmental record and produces a viable source of low cost electricity cleanly and safely, we should keep the St. Lucie Plant operations in business for 20 more years. Thank you.

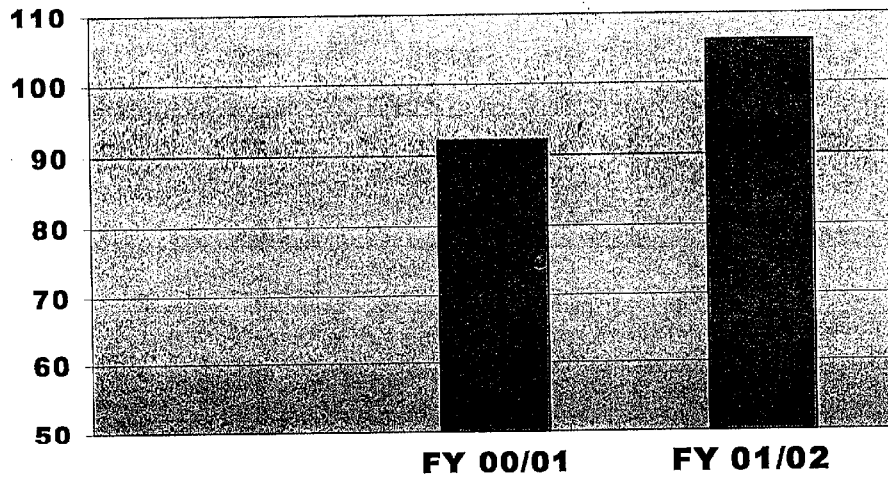
ST LUCIE COUNTY

Average \$ Value of New Home Construction

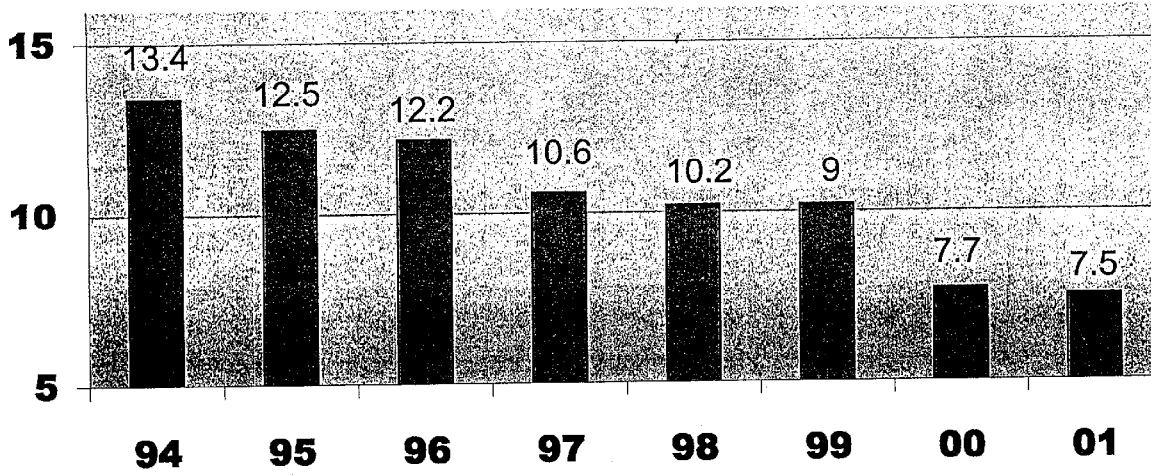


ST LUCIE COUNTY

Single Family Building Pmts/1st Qtr



ST LUCIE COUNTY UNEMPLOYMENT RATE



**ST LUCIE COUNTY
ECONOMIC DEVELOPMENT**

JOBS FILLED

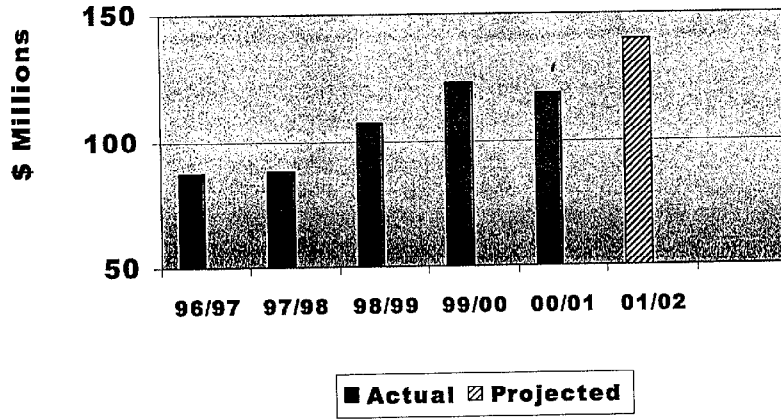
2850

Economic Development Ad Valorem Tax Exemption Program

Company Name	Jobs Filled (Through Jan. 2002)	Type of Project
Bee Electronics	120	Intra-County Relocation/New Construction
East Coast Lumber	17	Existing Business Expansion
Orchid Island Juice	15	Existing Business Expansion
Sunbrite Citrus	10	Existing Business Expansion
Tamlite Lighting	46	Existing Business Expansion
Tropicana	20	Existing Business Expansion
Convergys	805	New Business/Major Rehabilitation
Liberty Medical	765	Business Expansion/ Consolidation
QVC	1017	New Business
Twin Vee Boats	45	New Business
Total	2850	

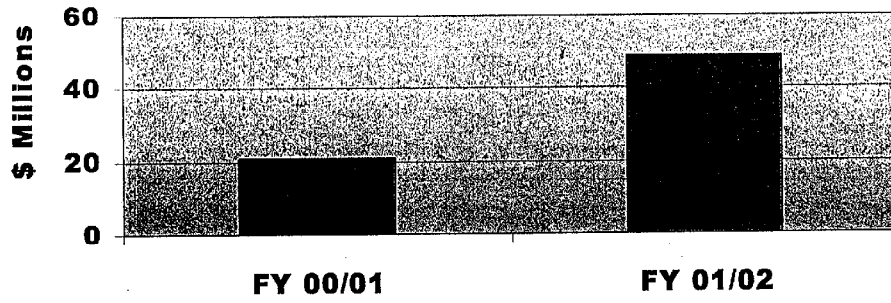
ST LUCIE COUNTY

Building Permit Valuation



ST LUCIE COUNTY

Permit Valuations/1st Qtr



ST LUCIE COUNTY

Single Family Building Permits

