

# 2003

Issued May 2003

PRODPR/03-1

# Product Profile

*a data products update from the U.S. Census Bureau*

## SF 3 at a Glance

- Key socioeconomic and housing data from Census 2000.
- Measures of economic well-being.
- Key tables repeated for Hispanic and major race groups.
- Complete U.S. coverage, plus Puerto Rico.
- Block group and tract geography.
- All 813 SF 3 statistical tables on the Web and on CD-ROM and DVD.
- Powerful, easy-to-use software on CD-ROM and DVD.

## Census 2000 Summary File 3

### Who We Are, How We Live

In Census 2000, the nation learned many facts about our 281 million residents:

- About 54 percent of us were married; 10 percent of us were divorced.
- Over 80 percent of us reported having a high school diploma or a higher degree.
- Our median household income was about \$42,000.
- Almost 76 percent of us drove alone to work; 12 percent carpooled.
- About 35 percent of our homes were built before 1960.
- Over half of American homes rely on gas as a heating fuel.

We learned all this and more from the data collected on the long form used in Census 2000 – and you can obtain such facts for your community and neighborhood. Of course, in your neighborhood, community, or state, the proportions may differ. For example, commuting patterns in New York City and Los Angeles differ greatly.

Since Census 2000 is our first “Internet census,” all these data are available free to you on the Census Bureau’s Web site <http://www.census.gov>.

Employment, home ownership, commuting, education, income and poverty, housing costs and value, disability – these are topics that drive America’s headlines, occupy policymakers and analysts, and concern the public as well. They are likewise among the topics found on the Census 2000 long-form questionnaire.

### Why Do You Ask?

During Census 2000, people often asked us why we asked them questions like those on disability and the number of bedrooms. Questions appear on the census questionnaire only if they are mandated or required by legislative or programmatic needs. For a discussion of the laws or programs underlying Census 2000 questions, users can visit the Census Bureau Web site at <http://www.census.gov/dmd/www/content.htm>.

Curious about how the 2000 questionnaire differs from the 1990 version? You’ll find that information on the Web at <http://www.census.gov/population/www/cen2000/90vs00.html>.

### Summary File 3 Offers Detailed Long-Form Data

The U.S. Census Bureau has released *Summary File 3* (SF 3) – the first files with detailed long-form statistics from Census 2000, representing the input of 19 million households weighted to reflect the entire population.

SF 3 is arguably the most popular file from the census. The data are drawn from your responses to 52 “sample” questions asked in Census 2000. Everyone counted in the census answered basic questions on age, sex, race, Hispanic origin, household relationship, and renter/owner status – the so-called “short-form” questions. A sample of the population (nationally about one in six households) received the long form and answered additional questions on income, education, commuting, and so forth.

United States  
**Census  
2000**

[www.census.gov](http://www.census.gov)

U S C E N S U S B U R E A U

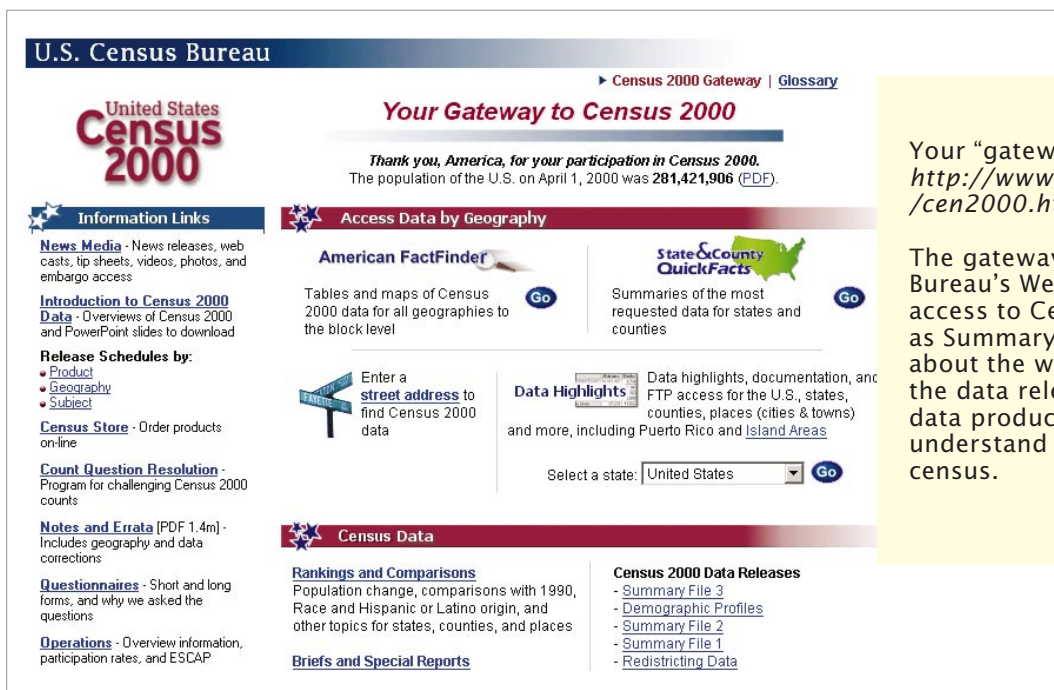
*Helping You Make Informed Decisions*

U.S. Department of Commerce  
Economics and Statistics Administration  
U.S. CENSUS BUREAU

The Census Bureau previously released Summary Files 1 and 2, with data based on the short-form questions. Summary File 1 provided these data down to the level of

census blocks; Summary File 2 provided these data for up to 249 population groups (many as a result of the multirace option, used for the first time in the multirace census).

Figure 1. Census 2000 Gateway



Your "gateway" to Census 2000 is <http://www.census.gov/main/www/cen2000.html>.

The gateway page on the Census Bureau's Web site gives you one-stop access to Census 2000 data files (such as Summary File 3) and information about the way we conducted the census, the data release schedule, the various data products, and what you need to understand and use data from the census.

Like Summary File 3, Summary File 4 will provide sample data from Census 2000, with tables repeated for

population groups (race and Hispanic groups, as in Summary File 2, plus 86 ancestry groups). There are 336 total repetitions.

## Understanding the Data Tables in SF 3

SF 3 contains 813 detailed tables, divided into 484 population tables (on marital status, education, income, commuting, and so forth) and 329 housing tables (on number of rooms, year structure built, value of home, shelter costs, and the like).

As the chart below shows, there are four kinds of tables, distinguished by content and geography. The chart also shows the 51 tables repeated for the 9 race and Hispanic or Latino groups identified below.

Fifty-one tables are repeated for nine major race and Hispanic or Latino groups:

- White alone.
- Black or African American alone.
- American Indian and Alaska Native alone.
- Asian alone.
- Native Hawaiian and Other Pacific Islander alone.
- Some other race alone.
- Two or more races.
- Hispanic or Latino.
- White alone, not Hispanic or Latino.

Figure 2. Table Types in Summary File 3

Table prefix	Content	Smallest geographic area	Number of tables	Repeated for race and Hispanic/Latino
P	Population	Block group	288	16
PCT	Population	Census tract	196	15
H	Housing	Block group	121	0
HCT	Housing	Census tract	208	20

### Figure 3. SF 3 Table Subjects

Note: Asterisk denotes tables repeated for nine race and Hispanic/Latino origin groups. For a detailed breakdown of the tables found in SF 3, see the Summary Table Outlines, Chapter 6 of the Census 2000 Summary File 3 Technical Documentation.

#### Population subjects

	<b>P tables: block group and census tract</b>	<b>PCT tables: census tract</b>
Ancestry		X
Basic population totals	X*	X
Disability	X	X*
Educational attainment	X*	X
Employment status	X*	X*
Grandparents as caregivers		X
Households and families	X*	X
Income in 1999 (family and nonfamily)	X*	X
Income in 1999 (household)	X*	X*
Income in 1999 (individuals)	X*	X*
Industry, occupation, and class of worker	X	
Journey to work (commuting)	X	X*
Language and ability to speak English	X	X*
Marital status	X	X
Migration	X	X*
Place of birth, citizenship status, and year of entry	X	X*
Place of work	X	
Poverty status in 1999 (family)	X*	X
Poverty status in 1999 (household)	X*	
Poverty status (individuals)	X*	X*
School enrollment	X*	X
Urban and rural		X
Veteran status	X	X*

#### Housing subjects

	<b>H tables: block group and census tract</b>	<b>HCT tables: census tract</b>
Bedrooms	X	
Contract rent	X	
Gross rent	X	X*
Gross rent, as a percentage of household income in 1999	X	X*
House heating fuel	X	X
Housing units	X	
Housing value	X	X*
Kitchen facilities	X	X*
Meals included in rent	X	
Mortgage status	X	X*
Occupants per room	X	X*
Occupancy status	X	
Plumbing facilities	X	X*
Price asked	X	
Rent asked	X	
Rooms	X	
Selected monthly owner costs	X	X*
Selected monthly owner costs, as a percentage of household income in 1999	X	X*
Telephone service available	X	X*
Tenure	X	X
Units in structure	X	X*
Urban and rural	X	
Vacancy status	X	
Vehicle availability	X	X*
Year householder moved into unit	X	X*
Year structure built	X	

### When to Use SF 1, When to Use SF 3

The long form was sent to a sample of the population, and the answers of these respondents have been given weights to produce estimates for the total population. Particularly in small places, census tracts, and block groups, users may observe differences in the population totals shown in SF 1 and SF 3. For example, Kent County, Delaware, has 34 census tracts; in 18, the weighted population (SF 3) is different from the 100-percent population (SF 1). Tract 401 has a weighted population of 5,321 and a 100-percent population of 5,337.

The SF 1 tables provide the official census count of the number of people in an area. The SF 3 tables provide estimates of the characteristics of the total population. The total number of people shown in the SF 3 table (Table P1) is provided for use as the denominator, or base, for calculating proportions. The SF 3 tables give the best estimates of the proportion of people with a particular characteristic, but SF 1 provides the official count of how many people are in the area. SF 3 provides both numbers: Table P1 gives the weighted total population, P2 gives the unweighted sample count, and P3 gives the 100-percent count of the population.

When dealing with items collected on the short form (for example, total population, the number of people reporting their race or Hispanic origin, the number of housing units, or the number of owners and renters) users should always view the SF 1 numbers as the official count. For larger places, counties, and states, the weighted numbers and the official numbers will usually agree. But in the case of smaller areas, you should use SF 1 as the source of reliable numbers.

## Geography in SF 3

Summary File 3 is packed with data for many kinds of geographic areas. It serves users interested in the macro view (for example, the United States as a whole or entire states) and the micro view (census tracts and census block groups), as well as all areas in between.

It gives you a summary of geographic areas (for example, all census tracts in a county) or parts of areas (for example, parts of counties in a congressional district or part of an Indian reservation within a state).

**State Files.** SF 3 has been released as a series of state files, with a final U.S. summary. There also is a file for the District of Columbia and Puerto Rico. The table designs are standard for each kind of geographic area. You can obtain SF 3 on a CD-ROM for each state or all the state files on two DVDs (see the order form on page 8). The software on the DVDs will allow you to generate national or regional totals for geographic areas such as ZCTAs and metro areas, regardless of state.

**U.S. File.** The national file provides summaries for higher levels of geography and covers the entire country. This file is designed for users who need to produce national or regional summaries of an area (e.g., all ZCTAs nationwide). They will find it easier to generate these figures using the national file on DVD or the “all states” file on DVD rather than the individual state files on CD-ROM.

Geographic areas shown include –

- United States
- Census Regions
- Census Divisions
- States
- District of Columbia
- Puerto Rico
- Counties
- Metropolitan Areas
- Urban Areas
- County Subdivisions
- Places
- Consolidated Cities
- ZIP Code Tabulation Areas
- Congressional Districts (106th)
- American Indian Areas
- Alaska Native Areas
- Hawaiian Home Lands
- Census Tracts
- Block Groups

## Internet Access Through American FactFinder

Visit the Census Bureau’s award-winning Web site <http://www.census.gov> and click on the American FactFinder (AFF) for access to data from SF 3. AFF gives several easy-to-use options for using SF 3:

*Quick Tables* gives you a set of key variables for areas down to the level of census tract or block group. *Quick Tables* are especially helpful in trying to sort through the data in a file this large.

*Geographic Comparison Tables* lets you see how your state, city, county, minor civil division, township, or census tract stacks up in comparison to others according to key variables.

*Thematic Maps* lets you display the data in a map format.

*Detailed Tables* (Figure 4) gives you direct access to all the SF 3 tables – all 813 tables.

AFF also gives you access to the technical documentation and other reference information to assist you in using the file. Be sure to look at the Summary File 3 overview page <http://www.census.gov/Press-Release/www/2002/sumfile3.html> for links to the documentation, the FTP site, and other useful pages. Especially valuable on this page is a search tool that lets you access Census 2000 and related data for each state. If your focus is on just one state, this is the page to consult.

Finally, great news for users interested in 1990/2000 comparisons! The 1990 Summary Tape File 3 is in the American FactFinder – with all the special tools: Quick Tables, Thematic Maps, and Detailed Tables.

### FactFinder Tip #1 – “Geo Within Geo”

The “geo within geo” button lets you select all areas of a certain type and display them for the entire nation, state, county, and so forth. You should use this option if, for example, you need national level summaries of counties, metro areas, American Indian areas, or three-digit ZCTAs. This feature would allow you to display all tracts in a state – provided the total doesn’t exceed 7,000 entities. (For summaries of areas

exceeding this limit, you must use the DVD version of the data set.)

### FactFinder Tip #2 – Search by Subject or Keyword

Plowing through all 813 tables in SF 3 to find just the tables that show “occupants per room,” for example, is a laborious, error-prone process. Find the tables you need fast by searching on subjects or keywords. Subject search gives you a set of topics we think are important. Keyword search lets you make the call and enter your own topic of interest. After you select the geography you need, look for the search tool on the page that lets you select the tables you need. (This feature also works for Thematic Maps.)

### Download Data From American FactFinder or FTP

Every AFF data page has a “Download” tab through which you can download these files as .csv or tab-delimited files into a spreadsheet program like Excel or Lotus or a database program like Access or dBASE. Downloads of detailed tables offer additional options. They allow you to input the data into a database format with labels or no labels, just the comma-delimited numbers.

In addition, ASCII files in a zipped format are available free on the Internet via File Transfer Protocol (FTP). Note that these files do not come with viewing software. Given the size of the files and the speed of your modem and Internet connection, downloading a file may be a time-consuming process. We are unable to offer technical support for the ASCII files or consult with individual users on the problems they may encounter reading the files, but we have developed a helpful set of instructions for using the ASCII files in Access 97 <http://www.census.gov/support/SF3ASCII.html>.



Figure 4. Go to American FactFinder for Detailed SF 3 Data – Down to the Block Group or Census Tract Level

**U.S. Census Bureau**

**American FactFinder**

[Main](#) | [Search](#) | [Feedback](#) | [FAQs](#) | [Glossary](#) | [Help](#)

[Detailed Tables](#) > [Select Geography](#)

Current Data Set: [Census 2000 Summary File 3 \(SF 3\) - Sample Data](#) [Current Selections](#)

Choose a selection method:
  list
  name search
  address search
  map
  geo within geo

Select a geographic type: 
[Explain Census Geography](#)

Select a state:

Select a county:

Select one or more geographic areas and click 'Add':

All Census Tracts

Census Tract 1

Census Tract 2.01

Census Tract 2.02

Census Tract 5

Census Tract 6

[Map It](#)

==== Census Tract =====

Census Tract 1, New York County, New York

Census Tract 2.01, New York County, New York

Census Tract 2.02, New York County, New York

Census Tract 5, New York County, New York

Census Tract 6, New York County, New York

1. Using American FactFinder (AFF) you can easily analyze trends within your community – for example, household income for census tracts or block groups. Here you use the “geo within geo” feature to select all 296 census tracts in New York County. You then select the table or tables you want, in this case, P52, household income in 1999.

(Note: In the census, income data are collected for the year before the census.)

**U.S. Census Bureau**

**American FactFinder**

[Main](#) | [Search](#) | [Feedback](#) | [FAQs](#) | [Glossary](#) | [Help](#)

[Detailed Tables](#) > [Select Tables](#)

Current Data Set: [Census 2000 Summary File 3 \(SF 3\) - Sample Data](#)

Search:
  show all tables
  by subject
  by keyword

Select one or more tables and click 'Add':

P51. Sex by Industry by Class of Worker for the Employed Civilian

**P52. Household Income in 1999**

P53. Median Household Income in 1999 (Dollars)

P54. Aggregate Household Income in 1999 (Dollars)

P55. Age of Householder by Household Income in 1999

P56. Median Household Income in 1999 (Dollars) by Age of Householder

[Add](#) [Remove](#)

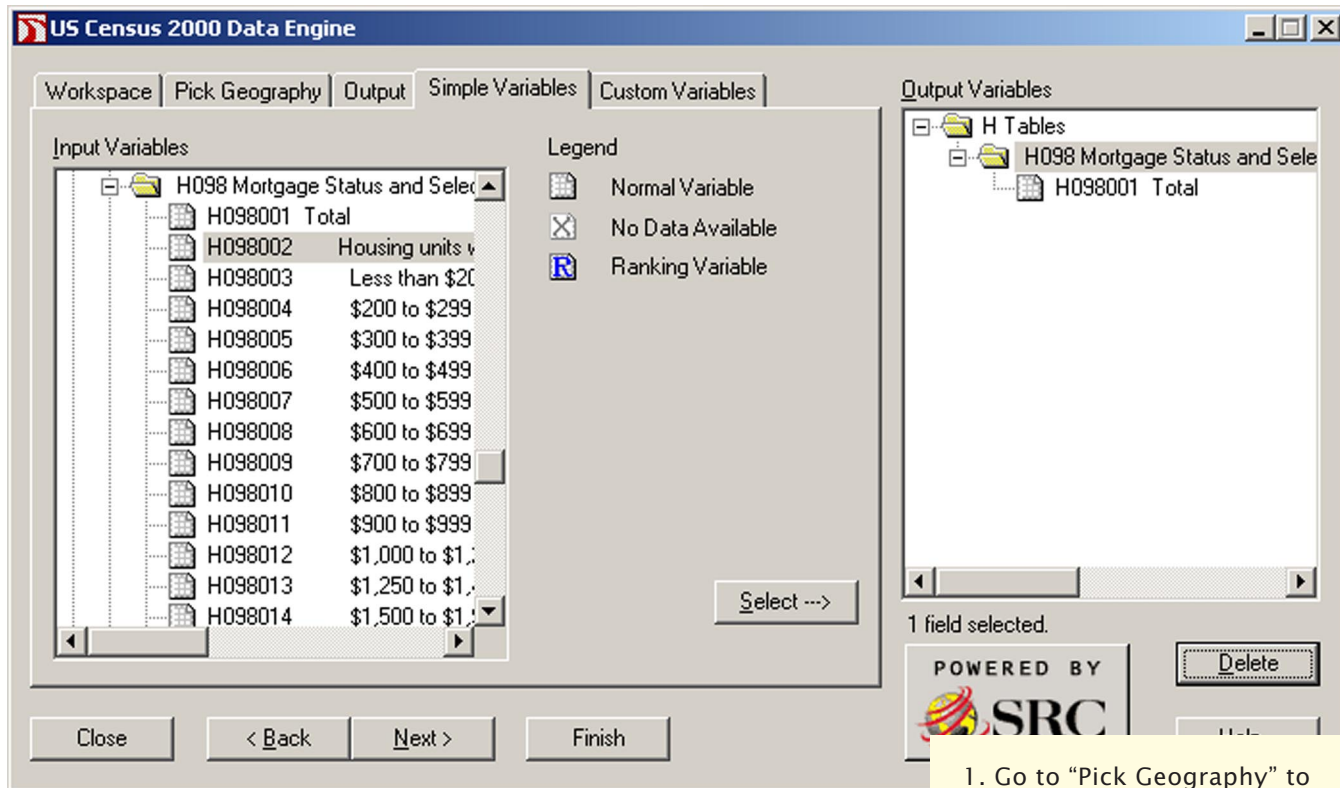
P52. Household Income in 1999

	A	B	C	D	E	F	G
	GEO_ID	SUMLEVEL	GEO_NAME	P052001	P052002	P052003	P052004
1							
2	Geography Identifier	Geographic Summary Level	Geography	Households: Total	Households: Household income; Less than \$10,000	Households: Household income; \$10,000 to \$14,999	Household: Household inc \$15,000 to \$19,999
3	14000US36061000100	140	York County, New York	0	0	0	0
4	14000US36061000201	140	New York County, New York	1,046	313	92	92
5	14000US36061000202	140	New York County, New York	3,117	900	340	340
6	14000US36061000500	140	York County, New York	0	0	0	0
7	14000US36061000600	140	York County, New York	4,009	1,248	534	534
8	14000US36061000700	140	York County, New York	625	45	1	1
9	14000US36061000800	140	York County, New York	3,649	674	43	43
10	14000US36061000900	140	York County, New York	496	13	1	1
11	14000US36061001001	140	New York County, New York	702	71	4	4
12	14000US36061001002	140	New York County, New York	2,299	841	34	34
13	14000US36061001200	140	York County, New York	1,655	366	21	21
14	14000US36061001300	140	York County, New York	798	43	1	1
15	14000US36061001401	140	New York County, New York	1,578	147	12	12
16	14000US36061001402	140	New York County, New York	1,307	331	20	20
17	14000US36061001501	140	New York County, New York	2,326	370	17	17
18	14000US36061001502	140	New York County, New York	1,774	106	3	3
19	14000US36061001600	140	York County, New York	3,156	622	36	36
20	14000US36061001800	140	York County, New York	3,094	640	34	34
21	14000US36061002000	140	York County, New York	1,774	737	36	36
22	14000US36061002100	140	York County, New York	1,134	25	1	1
23	14000US36061002201	140	New York County, New York	2,614	548	26	26

2. Once you've selected a table or tables, go to the “Download” tab in the AFF menu and you can easily download the data as a compressed or “zipped” .csv or .xls file. Once you unzip the file, you can then open it in a spreadsheet or database software. At this point, you can manipulate the data to detect the trends. For example, you learn that 14 tracts in New York County have over 1,000 households with a household income of \$200,000 or more.

(Note: \$200,000 is the topmost income level.)

Figure 5. **Powerful Software on SF 3 CD-ROMs and DVDs Lets You Control Retrieval and Output**



	A	B	C	D	E	F	G	H	
1	NAME	KEY	H098001	H098003	H098005	H098007	H098008	H098010	H098014
2	50001 5-Digit ZCTA	1950001	205	3	3	16	11	2	
3	50002 5-Digit ZCTA	1950002	430	0	21	22	47	17	
4	50003 5-Digit ZCTA	1950003	1696	0	11	92	69	127	
5	50005 5-Digit ZCTA	1950005	293	0	11	25	37	22	
6	50006 5-Digit ZCTA	1950006	601	2	37	35	52	26	
7	50007 5-Digit ZCTA	1950007	131	0	0	2	4	5	
8	50008 5-Digit ZCTA	1950008	301	3	22	27	7	7	
9	50009 5-Digit ZCTA	1950009	3281	0	32	63	152	269	
10	50010 5-Digit ZCTA	1950010	5867	0	45	181	321	417	
11	50014 5-Digit ZCTA	1950014	3742	0	52	85	155	185	
12	50020 5-Digit ZCTA	1950020	494	2	40	33	37	16	
13	50021 5-Digit ZCTA	1950021	8745	9	59	112	283	515	
14	50022 5-Digit ZCTA	1950022	2631	5	93	227	160	178	
15	50025 5-Digit ZCTA	1950025	1212	0	58	67	92	40	
16	50026 5-Digit ZCTA	1950026	203	0	0	16	20	4	
17	50027 5-Digit ZCTA	1950027	100	0	4	2	10	0	
18	50028 5-Digit ZCTA	1950028	444	0	6	20	34	36	
19	50029 5-Digit ZCTA	1950029	213	0	12	12	10	5	
20	50032 5-Digit ZCTA	1950032	171	0	0	15	24	25	
21	50033 5-Digit ZCTA	1950033	19	0	0	0	0	0	
22	50034 5-Digit ZCTA	1950034	131	0	2	19	11	2	
23	50035 5-Digit ZCTA	1950035	938	2	4	37	61	89	
24	50036 5-Digit ZCTA	1950036	4846	0	97	338	408	309	
25	50038 5-Digit ZCTA	1950038	131	0	2	0	18	10	
26	50039 5-Digit ZCTA	1950039	110	0	2	9	22	3	
27	50040 5-Digit ZCTA	1950040	89	0	2	2	13	0	
28	50041 5-Digit ZCTA	1950041	42	0	18	0	6	0	
29	50042 5-Digit ZCTA	1950042	111	0	2	4	6	0	
30	50044 5-Digit ZCTA	1950044	345	0	10	15	36	16	
31	50046 5-Digit ZCTA	1950046	430	0	2	23	19	69	

1. Go to "Pick Geography" to select the geography you want to highlight – in this case, all ZIP Code Tabulation Areas (ZCTAs) in Iowa. Then the software prompts you to pick a table.

2. The "Simple Variables" tab, shown here, lets you choose the data elements you want – in this case, mortgage status.

3. Then the software prompts you to save the data to a file on your hard drive.

4. After you save the data, you are free to bring it up in a spreadsheet or database software for further manipulation.

This tabulation summarizes data on mortgage status for all five-digit ZCTAs in Iowa.

(Note: ZCTAs are Census Bureau approximations of ZIP Code areas. They do not precisely coincide with ZIP Code delivery areas and do not include all ZIP Codes used for mail delivery. For more about these areas, see the technical documentation.)

## Buy SF 3 on CD-ROM or DVD

If you plan to make heavy use of SF 3 or to analyze data for more than a few variables, you may want to consider purchasing the SF 3 data on CD-ROM or DVD. You may purchase discs by contacting the Customer Services Center at 301-763-INFO (4636).

The files on disc come with proprietary software that operates on desktop computers with Microsoft Windows 95/98/2000/NT/XP operating systems. The software provides an expandable hierarchical menu or equivalent for the selection of one or more geographic areas. The user software supports selection of individual data items, complete data tables, and geographic identifiers to include in output files. Figure 5 shows how to download and display SF 3 data from the CD-ROM or the DVD.

Users who want both the individual state files and the national files will have to buy them separately. The state files come on two DVDs or on separate CD-ROMs for each state. We expect the national file to fit on one DVD.

All the state files found on the FTP site are available in the ASCII version on DVD, again in zipped format. We strongly recommend that users purchase the software-enhanced version of the SF 3 files. If users still prefer to use the ASCII files, they should consult the instructions we have developed for using these files in Access 97, accessible on the Internet at <http://www.census.gov/support/SF3ASCII.html>.

## Census 2000 Maps

If you are planning to use data for census tracts or census block groups, you'll need Census 2000 Maps, available electronically on the Internet (in PDF) and on paper:

**Block Maps.** Detailed maps (36" x 33") showing all levels of geography down to the level of census blocks. SF 3 does not contain data for census blocks, but does contain data for block groups, so these maps are the ones to use if you're studying such areas. Maps are available for sale from the Customer Services Center in sets for counties, cities, minor civil divisions, and other areas.

**Census Tract Outline Maps.** Maps (36" x 33") showing the boundaries of census tracts, ideal for most users. Maps are available for sale by county from the Customer Services Center.

## Order Discs and Maps Online or Call!

To order discs, you can use the order form in this profile or contact the Customer Services Center at 301-763-INFO (4636). For either discs or maps, contact the Customer Services Center. Note that all the SF 3 state files also are available in an ASCII version available on DVD, although we recommend that users purchase the software-enhanced version.

Need to keep up to date on other Census 2000 files? You can subscribe to the *Census Product Update*, a biweekly e-mail and online newsletter, available free from the Census Bureau. Come to <http://www.census.gov/mp/www/cpu.html> to sign up or to view the newsletter online.

## For More Information

- Visit the Census Bureau's Internet site at <http://www.census.gov>, or call our Customer Services Center at 301-763-INFO (4636).
- Call or visit a Census Bureau Regional Office. A complete listing can be found at <http://www.census.gov/field/www/>.
- Visit your local library. Many major university and public libraries participate in the Federal Depository Library Program and receive copies of Census Bureau reports. For a complete list, visit <http://www.gpo.gov/libraries>.
- Call or visit any of 1,800 state and local planning groups, libraries, chambers of commerce, and others that participate in a Census Bureau data center program. For a complete list of data centers, visit <http://www.census.gov/dmd/www/groupcncr.htm>. Users should also consult the State Data Center Census 2000 profiles at <http://www.sdcbidc.iupui.edu/Profiles/profiles.html>.

# Order Form

Yes! I want the Census 2000 Summary File 3. Please send me the CD-ROMs and/or DVDs for the states I have chosen below. I have enclosed \$ \_\_\_\_\_ (check or money order only) for my selection or provided credit card information below.

Name: \_\_\_\_\_ Date: \_\_\_\_\_

Company: \_\_\_\_\_

Address: \_\_\_\_\_  
(City, state, ZIP Code) (No P.O. boxes)

Phone: ( ) \_\_\_\_\_ Fax: ( ) \_\_\_\_\_

E-mail address: \_\_\_\_\_

States (1)	Number of DVD, CD-ROM (per state) (2)	Price (per set) (3)	Quantity (4)	Total (5)	States (1)	Number of DVD, CD-ROM (per state) (2)	Price (per set) (3)	Quantity (4)	Total (5)
<b>DVDs</b>					<b>CD-ROMs (Cont.)</b>				
<b>Software Version</b> (All states and Puerto Rico)	2	\$105.00		\$	Massachusetts	1	\$50.00		\$
U.S. Summary	1	\$70.00			Michigan	1	50.00		
<b>ASCII Version</b> (All states and Puerto Rico)	2	105.00			Minnesota	1	50.00		
U.S. Summary	1	70.00			Mississippi	1	50.00		
<b>CD-ROMs (Software Version)</b>					Missouri	1	50.00		
U.S. Kit: All states	54	\$1,570.00		\$	Montana	1	50.00		
Alabama	1	50.00			Nebraska	1	50.00		
Alaska	1	50.00			Nevada	1	50.00		
Arizona	1	50.00			New Hampshire	1	50.00		
Arkansas	1	50.00			New Jersey	1	50.00		
California	2	75.00			New Mexico	1	50.00		
Colorado	1	50.00			New York	1	50.00		
Connecticut	2	75.00			North Carolina	1	50.00		
Delaware	1	50.00			North Dakota	1	50.00		
District of Columbia	1	50.00			Ohio	1	50.00		
Florida	1	50.00			Oklahoma	1	50.00		
Georgia	1	50.00			Oregon	1	50.00		
Hawaii	1	50.00			Pennsylvania	1	50.00		
Idaho	1	50.00			Rhode Island	1	50.00		
Illinois	1	50.00			South Carolina	1	50.00		
Indiana	1	50.00			South Dakota	1	50.00		
Iowa	1	50.00			Tennessee	1	50.00		
Kansas	1	50.00			Texas	2	75.00		
Kentucky	1	50.00			Utah	1	50.00		
Louisiana	1	50.00			Vermont	1	50.00		
Maine	1	50.00			Virginia	1	50.00		
Maryland	1	50.00			Washington	1	50.00		
<b>SUBTOTAL</b> \$					<b>SUBTOTAL</b> \$				

**Note:** Although the Census Bureau recommends that users purchase the software-enhanced version of SF 3, we also make SF 3 available in ASCII format on the Internet [http://www2.census.gov/census\\_2000/datasets/Summary\\_File\\_3](http://www2.census.gov/census_2000/datasets/Summary_File_3) and on DVD or CD-ROM.

**TOTAL \$** \_\_\_\_\_

**METHOD OF PAYMENT (please check one)**

**Overseas Service** — add \$25.00

Check payable to Commerce-Census

9     Census deposit account

Visa, MasterCard, AMEX, or Discover account number:

Expiration date: Month/Year: \_\_\_\_/\_\_\_\_

Name on card: \_\_\_\_\_

Signature: \_\_\_\_\_

To place your **order by phone** (have your credit card ready) or for further information about Summary File 3 data products, please call our Customer Services Center at **301-763-INFO (4636)**, fax your order toll-free to **888-249-7295**, or access our Web site at <http://www.census.gov> and select "Catalog."

For **mail orders only**, complete this order form and send it with your payment to: **U.S. Department of Commerce  
U.S. Census Bureau (MS 0801)  
P.O. Box 277943, Atlanta, GA 30384-7943**