

The Joseph J. Koch Collection



The Combined Arms Research Library acquired the Joseph J. Koch Collection in 1999 from J.J. Koch's great nephew, Dennis Koch, of Spring Hill Kansas. The collection is an extensive personal military collection from the first third of the 20th century and it consists of Army doctrinal materials, books, maps, and other memorabilia pertaining to Major Koch's Army service.

Joseph J. Koch was born in Kansas on 10 September 1883. He graduated from Saint Benedict's College for Boys, present day St. Benedictine College, in Atchison Kansas, 1904. He served in the Missouri National Guard and was commissioned a 1st Lt. of Infantry on 20 May 1913. Promoted to the rank of captain, he assumed command of Company M, 1st Infantry Regiment, Missouri National Guard in February 1915. His unit, along with other Guard units from across the country, was mobilized in June 1916 and participated in the Punitive Expedition into Mexico with General Pershing from 1916 to 1917



Clipping from the *Saint Louis Post-Dispatch* Rotogravure Picture Section, August 6, 1916. Troops from the MO. National Guard participated in the Punitive Expedition into Mexico in 1916

In March 1917 Koch was promoted to major and deployed with the 137th Infantry Regiment, 35th Infantry Division to France as part of the American Expeditionary Force in World War I. He commanded 3rd Battalion, 137th Infantry Regiment and was wounded in action during the Meuse-Argonne Offensive on 26 September 1918. Recovering from his wounds, Major Koch returned to the United States and was honorably discharged in December 1919.

Koch returned to active duty as a Major of Infantry in July 1920 and attended the Command and General Staff School at Fort Leavenworth from 1926-1927. He graduated from C. and G.S.S. on 17 June 1927.

Major Koch continued to serve on active duty until his retirement in 1931. He died in 1938.

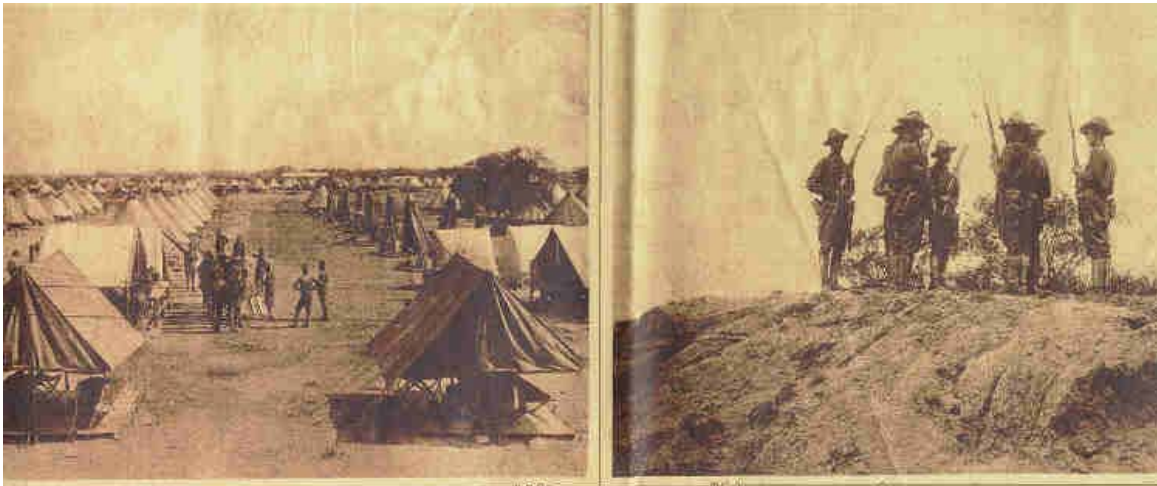
Box 1

Series A: Personal Records

- Correspondence
- Ledgers, 1926 & 1927
- Medical
- Military orders
- Military personnel records
- Photographs
- Retirement
- Rifle Team

Series B: Topical

- Clippings
- Joint Army Navy Maneuver, 1923-1924
- Military forms and publications
- Recruitment



Clipping from the Saint Louis Post-Dispatch Rotogravure Picture Section, August 6, 1916. Troops camped out on the Mexican Border.

Series C: Unit Records

- Co.M, 1st Infantry, Missouri National Guard --Administrative
- Co.M, 1st Infantry, Missouri National Guard – Correspondence
- Co.M, 1st Infantry, Missouri National Guard – Monthly Returns
(Shelved between box 1 and 2)
- Co.M, 1st Infantry, Missouri National Guard -- Publications
- Co.M, 1st Infantry, Missouri National Guard -- Punitive Expedition
- Co.M, 1st Infantry, Missouri National Guard -- Rifle Team
- Co.M, 1st Infantry, Missouri National Guard – Training
- HQ, Citizens Military Training Camp, Plattsburg Barracks, NY
- HQ, Citizens Military Training Camp, Plattsburg Barracks, NY--
Publication – ‘Report of Camp Commandant’

Return of Company M First Regiment Infantry, National Guard of Missouri, for the Month of February, 1915

PRESENT				ABSENT				PRESENT AND ABSENT		ALTERATIONS SINCE LAST MONTHLY RETURN										MEMORANDA	
OFFICERS		ENLISTED MEN		WHETHER THE DEPARTMENT		WHETHER THE DEPARTMENT		PRESENT	ABSENT	GAIN		OFFICERS		ENLISTED MEN		REMARKS	REMARKS				
By Special Duty	By Detail	By Special Duty	By Special Duty	By Special Duty	By Special Duty	By Special Duty	By Special Duty			By Special Duty	By Special Duty	By Special Duty	By Special Duty	By Special Duty	By Special Duty			By Special Duty			
1	1	6	6	1	1	1	1	63	64	56	1	10	11	2	1	3					

RECORD OF EVENTS

Guard Mount and Regimental Review, Wed. Feb. 1915.
U.S. Inspection Tues. Feb. 23-1915.

Capt. J. J. Koch
Company M, 1st Infantry

Return of Company 'M' First Regiment Infantry, MO National Guard under J.J. Koch's command. . Commanding officers were required to submit these status reports and records of events to the Adjutant General.

Officers, Present and Absent, Accounted for by Name.

NOTE 1 - This table lists the names and ranks of all officers present or absent on the date of the return, with their respective commands, and the dates of their appointments. It should be filled out by the commanding officer of the company.

NOTE 2 - This table lists the names and ranks of all enlisted men present or absent on the date of the return, with their respective commands, and the dates of their appointments. It should be filled out by the commanding officer of the company.

Alterations Since Last Return Among the Enlisted Men.

NOTE 3 - This table lists the names and ranks of all enlisted men who have been added to the company since the last return, with the dates of their appointments and the places where they were recruited.

NOTE 4 - This table lists the names and ranks of all enlisted men who have been discharged from the company since the last return, with the dates of their discharges and the reasons therefor.

NO.	NAME	RANK	REMARKS	NO.	NAME	RANK	DATE	PLACE	REMARKS
1	Joseph J Koch	Captain	Commanding the Company	1	Berg, Fred M.	Private	Feb. 11-1915	St. Louis, Mo.	Enlisted in Regiment
				2	Bond, William Benjamin	Private	Feb. 14-1915	St. Louis, Mo.	Enlisted in Regiment
				3	Conner, Lorenzo S.	Private	Feb. 14-1915	St. Louis, Mo.	Enlisted in Regiment
				4	Conner, Dewey	Private	Feb. 14-1915	St. Louis, Mo.	Enlisted in Regiment
				5	Hill, Thomas B.	Private	Feb. 14-1915	St. Louis, Mo.	Enlisted in Regiment
				6	Kner, Charles F.	Private	Feb. 14-1915	St. Louis, Mo.	Enlisted in Regiment
				7	Kulp, William D.	Private	Feb. 14-1915	St. Louis, Mo.	Enlisted in Regiment
				8	O'Donnell, Robert M.	Private	Feb. 14-1915	St. Louis, Mo.	Enlisted in Regiment
				9	Roby, Wesley O.	Private	Feb. 14-1915	St. Louis, Mo.	Enlisted in Regiment
				10	Thompson, Perry W.	Private	Feb. 14-1915	St. Louis, Mo.	Enlisted in Regiment
				11	Gumann, Lewis W.	Private	Feb. 9-1915	St. Louis, Mo.	Discharged Feb. 1915, Service honest & faithful, character good

Page2 of Return for Company 'M' First Infantry Regiment

- HQ, Citizens Military Training Camp, Plattsburg Barracks, NY—
- Publication –‘Report of Assistant Executive Officer
- HQ, Panama Canal Division’
- HQ, Panama Canal Division – Publications –‘Approaches to the
- Panama Canal’ (1925)
- HQ, U.S. Army Transport (U.S.A.T.) “Somme”
- HQ, U.S. Army Transport (U.S.A.T.) “Somme” –Publications
- 137th Infantry Regiment – A.E.F. – Maps
- 137th Infantry Regiment – A.E.F. – Orders

Hq. 3rd Bn., 137th Inf., Sept. 10, 1918.

FIELD ORDERS
NO. 11.

1. This Battalion will move by marching from SAFFAIS to vicinity of LANEUVILLE, DEVT, NANCY and BOSSERVILLE. Route: FERRIERES - VILLE VERNONIS - LANEUVILLE - NANCY - JARVILLE. The column will march north-west from Bn. Hq. at 8 P.M. this date in the following order: Hq. Det., L, M, I & K, Transport, Sanitary. Distance of 15 meters will be maintained between platoons and 25 meters between companies. The Transport will follow the column at 40 meters, and will march in convoys of 10 vehicles each, 40 meters between convoys. Communication will be established from head to rear.
2. No lights whatever will be allowed. Rolling kitchens will not be fired unless they show no light. Smoking and the use of flashlights will be absolutely prohibited.
3. Each Company Commander will keep a bugler with him to sound the alarm in case hostile airplanes approach. The signal is the "ATTENTION" repeated several times. In case hostile airplanes approach all movements will cease and all men and vehicles halted as far as possible on the grass or under trees in order to avoid white roads. Upon arrival at camp or bivouac extreme care must be taken not to break new roads or trails. In case such is necessary they should be camouflaged immediately.
4. Combat train will march filled and field service/allowance of forage and rations will be carried.
5. All company and officers' baggage will be ready to load at 6 P.M. this date.
6. All billets and surrounding areas will be thoroughly policed and latrines covered. Certificate will be made to these Headquarters by 7 P.M. that areas and billets are clean and that no property is left behind.
7. Helmets and blouses will be worn.
8. The slow moving party will follow in the rear of the Sanitary Detachment and will be in charge of Lt. Ricord who will detail one squad from Co. I to accompany him.
9. Lt. Hughes and billeting party will precede the battalion to the new area.
10. The Intelligence Section will furnish a guide for the Battalion.
11. Battalion Headquarters will close at SAFFAIS at 7:45 P. M. and will open upon arrival in the new area.

By order of Major Koch

Verne R. Wilson
1st Lt. & Adjutant.

Distribution.
C. O. 3rd Bn.
C. O. Co. I, K, L, M,
Scout Officer.
Transport & Supply.
Billeting Officer.

137th Infantry Regiment – A.E.F. – Training

ROSTER OF DRILLS AND INSTRUCTION

FROM November 11-1918 TO December 31-1918

ORGANIZATION Company "M"

NAME IN FULL	RANK	Date of Enlistment	DATE OF DRILLS OR TARGET PRACTICE								REMARKS
			Nov	Dec	1	2	3	4	5	6	
Joseph J. Koch	Capt.		1	1	1	1	1	1	1	1	
Clarence J. Soderman	1st Lieut.		a	a	a	a	a	a	a	a	
Bryan K. Todd	1st Sgt.	Mar 11-15	1	1	1	1	1	1	1	1	
Rudolph H. Hartmann	Q.M. Sgt.	May 21-18	1	1	1	1	1	1	1	1	
Walter Melchiss	Sergt.	July 6-15	1	1	1	1	1	1	1	a	50
Harry W. Thompson	Sergt.	Feb 16-15	1	1	1	1	1	1	1	1	50
Walter P. Love	Sergt.	July 9-18	1	1	1	1	1	a	1	1	50
Albert Tebeau	Corp.	May 5-18	1	1	1	1	1	1	1	1	50
Charles B. Allen	Corp.	July 2-18	1	1	1	1	1	1	x	x	50
Theodore S. Koziatek	Corp.	Feb 11-15	1	1	1	1	1	1	1	1	50
John Perowitz	Corp.	Feb 25-15	1	1	1	1	1	1	1	1	50
Alvin B. Queller	Corp.	Nov 18-15	1	1	1	1	1	1	1	a	50
Benjamin B. Pondurant	Corp.	Feb 14-15	1	1	1	1	1	1	1	1	50
Horrad Vinyard	Cook	July 4-15	1	1	1	1	1	a	1	a	50
Gilbert H. Barnes, Jr.	Muse.	July 6-15	1	1	a	1	1	a	1	a	50
Arinony	Private	July 6-15	x	x	x	x	x	x	x	x	50
Astley	Private	Oct 10-15	x	x	x	x	x	x	x	x	50
Anslyn	Private	July 6-15	x	x	x	x	x	x	x	x	50
Baldi	Private	Aug 14-15	1	1	1	1	1	1	1	1	50
Berg	Private	Feb 10-15	x	x	x	x	x	x	x	x	50
Brown	Private	Oct 23-15	1	1	1	1	1	1	x	1	50
Cadwallader	Private	Oct 24-15	1	1	a	1	1	1	1	1	50
Caule	Private	Oct 24-15	1	1	1	1	1	1	1	1	50
Degendorf	Private	Apr 27-15	x	x	x	x	x	x	x	x	50
Farrell	Private	July 10-15	a	a	a	a	a	a	a	a	50
Ferguson	Private	July 10-15	a	a	a	a	1	1	x	a	50
Ferriss	Private	Feb 7-15	a	a	a	a	a	a	a	a	50
Finkelstein	Private	Oct 24-15	1	1	1	1	1	1	1	a	50
Flores	Private	July 6-15	1	1	1	1	1	a	1	a	50
Gill	Private	Apr 6-14	x	x	x	x	x	x	x	x	50
Goebel	Private	July 10-15	1	1	1	1	1	1	1	1	50
Hardrick	Private	July 6-15	x	1	x	1	x	x	x	x	50
Heath	Private	July 6-15	a	a	a	a	a	a	a	a	50
McCaskey	Private	June 29-15	a	1	a	1	1	1	a	a	50
Mitchinson	Private	June 29-15	1	1	1	1	1	1	1	1	50
Udd	Private	July 4-15	x	x	x	x	x	x	x	x	50
Veave	Private	Oct 23-15	1	1	x	1	1	x	1	1	50
Kulpe	Private	Feb 16-15	1	1	x	1	x	x	x	x	50

Name	Rank	10	11	12	13	14	15	16	17	18	19	20
Lynn	Private	Jul 1-15	X	X	X	X	X	X	X	X	X	X
Merrilliams	Private	July 10-15	X	X	X	X	X	X	X	X	X	X
McLaughlin	Private	October 1-15	X	X	X	X	X	X	X	X	X	X
Mercier	Private	July 1-15	X	X	X	X	X	X	X	X	X	X
Munroe	Private	April 1-15	X	X	X	X	X	X	X	X	X	X
Nansen	Private	July 1-15	Q	Q	Q	Q	Q	Q	Q	Q	Q	Q
Norris	Private	Oct 1-15	X	X	X	X	X	X	X	X	X	X
Phillips	Private	Oct 1-15	X	X	X	X	X	X	X	X	X	X
Roberts, B.D.	Private	Oct 1-15	X	X	X	X	X	X	X	X	X	X
Probst	Private	Feb 10-15	X	X	X	X	X	X	X	X	X	X
Puterbaugh	Private	July 10-15	X	X	X	X	X	X	X	X	X	X
Reicher	Private	Oct 1-15	X	X	X	X	X	X	X	X	X	X
Shannon	Private	July 1-15	Q	Q	Q	Q	Q	Q	Q	Q	Q	Q
Skinner	Private	April 1-15	X	X	X	X	X	X	X	X	X	X
Spierling	Private	July 1-15	X	X	X	X	X	X	X	X	X	X
Stimpson	Private	Oct 1-15	X	X	X	X	X	X	X	X	X	X
Stratton	Private	Oct 1-15	X	X	X	X	X	X	X	X	X	X
Uarsh	Private	Oct 1-15	X	X	X	X	X	X	X	X	X	X
Van Curren	Private	Oct 1-15	Q	Q	Q	Q	Q	Q	Q	Q	Q	Q
Wilmington	Private	Oct 1-15	X	X	X	X	X	X	X	X	X	X
Woods	Private	May 1-15	X	X	X	X	X	X	X	X	X	X
Kerrison	Private	May 1-15	X	X	X	X	X	X	X	X	X	X

TOTAL PRESENT C. O.
E. M.

CHARACTER OF INSTRUCTION

DATE	No. of Hours	CHARACTER OF DUTY PERFORMED	SIGNATURE OF FIRST SERGEANT	SIGNATURE OF COMPANY COMMANDER
Nov. 16-15	1 1/4	1 hr. Close order, 1/2 hr. Instruction Squad, 1/2 hr. Manual of Arms.	B. J. Todd	[Signature]
Nov. 21-15	1 1/4	Practice March, Forest Park and Return in honor of Liberty Bell.	B. J. Todd	
Nov. 23-15	1 1/2	1 1/2 Hour Close Order, 1/2 hr. Manual of Arms.	B. J. Todd	
Nov. 30-15	1 1/2	1 1/2 Hour Close Order, 1/2 hr. Battalion Drill, 1/2 hr. Manual of Arms.	B. J. Todd	
Dec. 1-15	1 1/2	Regimental Parade and Review.	B. J. Todd	
Dec. 14-15	1 1/2	1 1/2 Hour Close Order, 1/2 hr. Manual of Arms.	B. J. Todd	
Dec. 21-15	1 1/2	1/2 hr. Extended Order, 1/2 hr. Bayonet Exercise, 1/2 hr. Close Order.	B. J. Todd	
Dec. 28-15	1 1/2	1/2 hr. Bayonet Exercise, 1/2 hr. Extended order, 1/2 hr. Close Order.	B. J. Todd	

INSTRUCTIONS

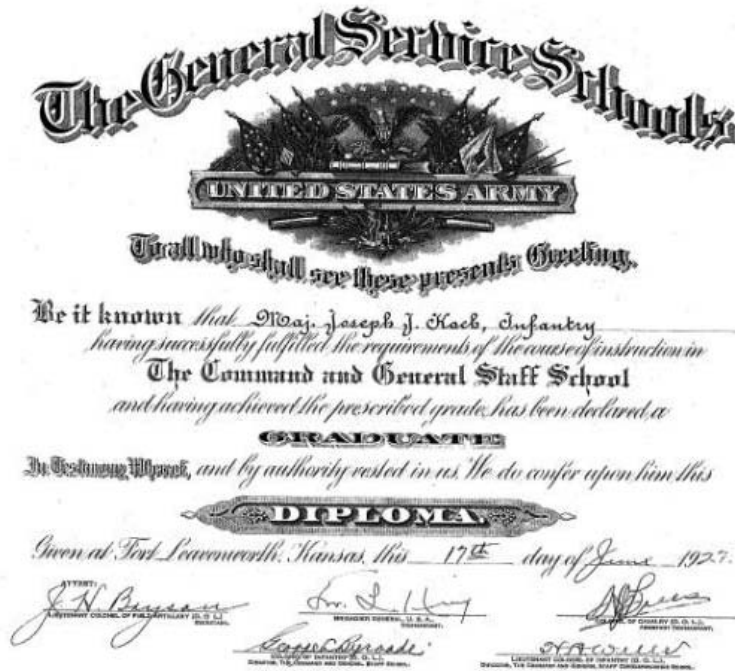
Each troop, battery, company or detachment will keep on this form a roster of all officers and enlisted men belonging thereto, showing their presence, absence or tardiness at every drill or exercise, showing the date of such drill or exercise, the character thereof and the time consumed therein, and if a march or change of station the number of miles marched or traveled. This record will be made at the assembly of the company and will be signed by the First Sergeants and Company Commander. This report must be submitted to Regular Army Inspectors when required and is a basis for allotment of Federal Funds for the support of each organization of the National Guard.

THIS REPORT MUST BE KEPT UP TO DATE AT ALL TIMES.

Box 2

Series D: Command and General Staff School
Administrative
Diploma
Map problems and solutions
Publications—AY 1927 courseware

Military sketching and slope board with mil. protractor and range arm. Includes the publication "Landscape Sketching" August 1917. (In mylar sleeve next to box 2)



Major Koch's Diploma from The Command and General Staff School.
17 June 1927



1927 Class of the Command and General Staff School.
Major Koch is in the 4th row from the bottom, 2nd student from the left.

Box 3

American flag (Burial flag)

Box 4

Infantry School curriculum, 1921-1926