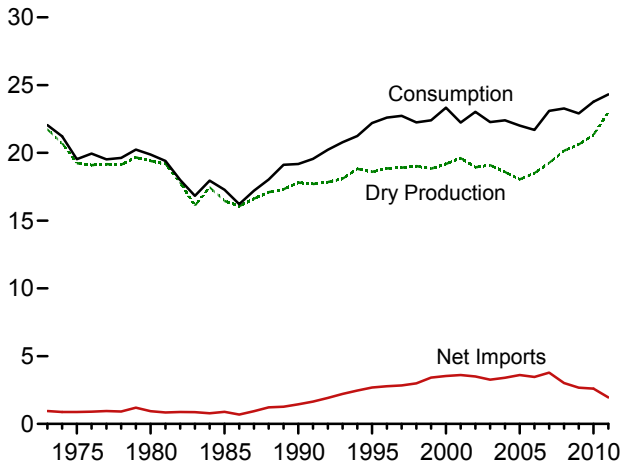


## 4. Natural Gas

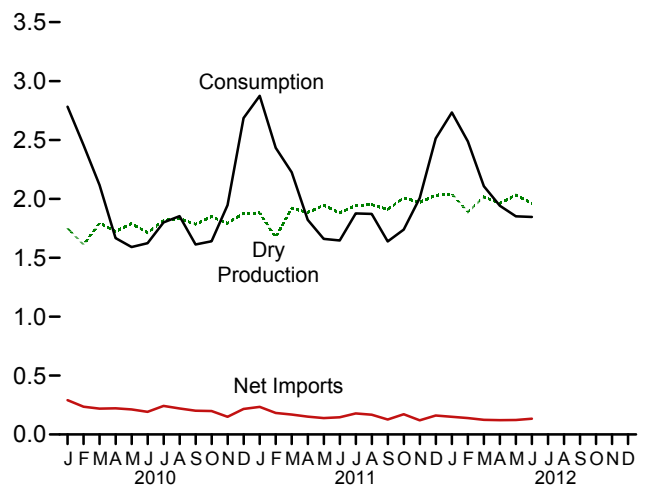
---

**Figure 4.1 Natural Gas**  
(Trillion Cubic Feet)

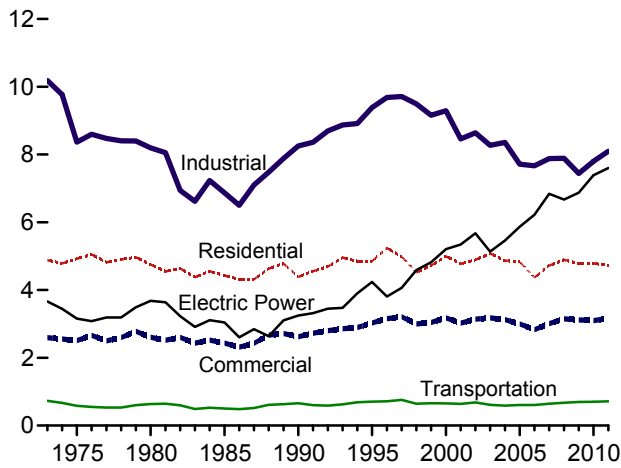
Overview, 1973-2011



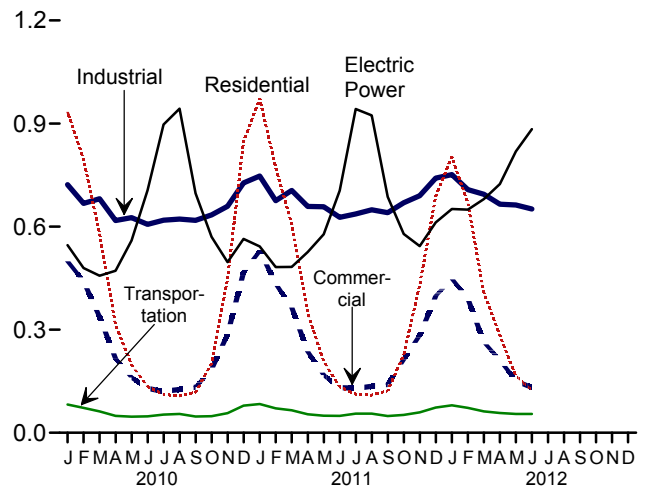
Overview, Monthly



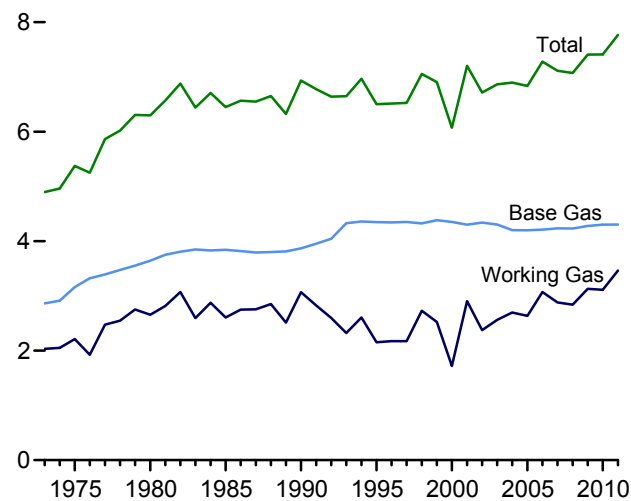
Consumption by Sector, 1973-2011



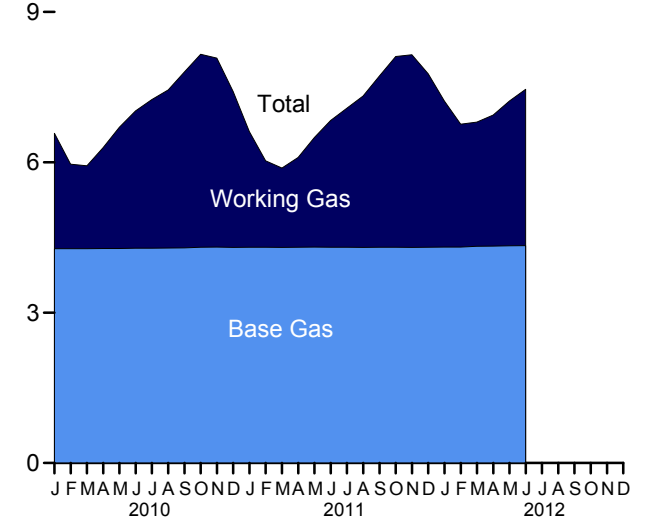
Consumption by Sector, Monthly



Underground Storage, End of Year, 1973-2011



Underground Storage, End of Month



Web Page: <http://www.eia.gov/totalenergy/data/monthly/#naturalgas>.  
Sources: Tables 4.1, 4.3, and 4.4.

**Table 4.1 Natural Gas Overview**  
(Billion Cubic Feet)

	Gross Withdrawals <sup>a</sup>	Marketed Production (Wet) <sup>b</sup>	Extraction Loss <sup>c</sup>	Dry Gas Production <sup>d</sup>	Supplemental Gaseous Fuels <sup>e</sup>	Trade			Net Storage Withdrawals <sup>f</sup>	Balancing Item <sup>g</sup>	Consumption <sup>h</sup>
						Imports	Exports	Net Imports			
1973 Total	24,067	22,648	917	21,731	NA	1,033	77	956	-442	-196	22,049
1975 Total	21,104	20,109	872	19,236	NA	953	73	880	-344	-235	19,538
1980 Total	21,870	20,180	777	19,403	155	985	49	936	23	-640	19,877
1985 Total	19,607	17,270	816	16,454	126	950	55	894	235	-428	17,281
1990 Total	21,523	18,594	784	17,810	123	1,532	86	1,447	-513	307	19,174
1995 Total	23,744	19,506	908	18,599	110	2,841	154	2,687	415	396	22,207
1996 Total	24,114	19,812	958	18,854	109	2,937	153	2,784	2	860	22,609
1997 Total	24,213	19,866	964	18,902	103	2,994	157	2,837	24	871	22,737
1998 Total	24,108	19,961	938	19,024	102	3,152	159	2,993	-530	657	22,246
1999 Total	23,823	19,805	973	18,832	98	3,586	163	3,422	172	-119	22,405
2000 Total	24,174	20,198	1,016	19,182	90	3,782	244	3,538	829	-306	23,333
2001 Total	24,501	20,570	954	19,616	86	3,977	373	3,604	-1,166	99	22,239
2002 Total	23,941	19,885	957	18,928	68	4,015	516	3,499	467	65	23,027
2003 Total	24,119	19,974	876	19,099	68	3,944	680	3,264	-197	44	22,277
2004 Total	23,970	19,517	927	18,591	60	4,259	854	3,404	-114	461	22,403
2005 Total	23,457	18,927	876	18,051	64	4,341	729	3,612	52	236	22,014
2006 Total	23,535	19,410	906	18,504	66	4,186	724	3,462	-436	103	21,699
2007 Total	24,664	20,196	930	19,266	63	4,608	822	3,785	192	-203	23,104
2008 Total	25,636	21,112	953	20,159	61	3,984	963	3,021	34	2	23,277
2009 Total	26,057	21,648	1,024	20,624	65	3,751	1,072	2,679	-355	-103	22,910
2010 January	2,224	1,838	88	1,750	5	385	94	291	822	-86	2,783
February	2,057	1,692	81	1,611	5	324	88	236	628	-24	2,456
March	2,296	1,884	90	1,794	5	319	100	219	34	65	2,117
April	2,187	1,810	86	1,723	5	298	76	223	-364	80	1,667
May	2,231	1,881	90	1,791	5	298	86	212	-416	-2	1,591
June	2,134	1,797	86	1,712	5	282	90	192	-326	41	1,624
July	2,221	1,908	91	1,817	6	329	86	243	-231	-35	1,800
August	2,241	1,924	92	1,832	6	305	84	221	-190	-15	1,853
September	2,251	1,874	89	1,785	5	282	79	202	-363	-16	1,612
October	2,343	1,942	93	1,849	6	295	96	199	-360	-54	1,639
November	2,266	1,882	90	1,792	5	273	124	150	77	-78	1,947
December	2,388	1,971	94	1,877	6	352	135	217	675	-89	2,685
Total	26,836	22,402	1,070	21,332	65	3,741	1,137	2,604	-13	-213	23,775
2011 January	2,309	E 1,972	92	E 1,880	6	371	136	235	799	R -45	R 2,875
February	2,109	E 1,752	79	E 1,674	5	308	125	183	584	R -13	R 2,433
March	2,423	E 2,020	99	E 1,921	6	314	145	170	145	R -16	R 2,225
April	2,363	E 1,979	95	E 1,884	5	278	127	152	-212	R -5	R 1,823
May	2,420	E 2,046	101	E 1,945	3	271	132	139	-398	R -28	R 1,661
June	2,330	E 1,977	95	E 1,881	5	265	120	146	-340	R -45	R 1,646
July	2,344	E 2,044	99	E 1,944	5	293	113	179	-244	R -8	R 1,876
August	2,371	E 2,051	99	E 1,951	5	279	111	168	-244	R -7	1,872
September	2,371	E 2,005	95	E 1,910	5	253	127	127	-398	R -4	R 1,639
October	2,496	E 2,112	104	E 2,008	5	281	110	171	-385	R -60	R 1,739
November	2,483	E 2,074	104	E 1,971	5	247	128	120	-37	-52	2,006
December	2,557	E 2,138	107	E 2,031	6	295	134	161	384	R -68	R 2,514
Total	28,576	E 24,170	1,169	E 23,000	61	3,456	1,507	1,949	-348	R -352	R 24,310
2012 January	2,575	E 2,150	109	E 2,042	6	281	130	150	545	R -9	R 2,734
February	2,380	E 1,991	102	E 1,889	5	269	130	139	459	R -6	R 2,487
March	2,539	E 2,125	109	E 2,016	6	265	141	124	-39	R (s)	2,107
April	2,447	E 2,066	105	E 1,961	5	243	122	121	-137	R -8	R 1,941
May	R 2,532	RE 2,140	108	RE 2,033	4	257	134	123	-283	R -25	R 1,852
June	2,424	E 2,064	103	E 1,961	5	258	125	134	-230	-23	1,847
6-Month Total	14,896	E 12,537	636	E 11,902	31	1,573	782	791	315	-71	12,967
2011 6-Month Total	13,955	E 11,746	561	E 11,185	30	1,807	784	1,023	577	-153	12,663
2010 6-Month Total	13,127	10,901	521	10,381	31	1,906	533	1,373	379	74	12,238

<sup>a</sup> Gas withdrawn from natural gas and crude oil wells; excludes lease condensate.

<sup>b</sup> Gross withdrawals minus repressuring, nonhydrocarbon gases removed, and vented and flared. See Note 1, "Natural Gas Production," at end of section.

<sup>c</sup> See Note 2, "Natural Gas Extraction Loss," at end of section.

<sup>d</sup> Marketed production (wet) minus extraction loss.

<sup>e</sup> See Note 3, "Supplemental Gaseous Fuels," at end of section.

<sup>f</sup> Net withdrawals from underground storage. For 1980-2010, also includes net withdrawals of liquefied natural gas in above-ground tanks. See Note 4, "Natural Gas Storage," at end of section.

<sup>g</sup> See Note 5, "Natural Gas Balancing Item," at end of section. Since 1980, excludes transit shipments that cross the U.S.-Canada border (i.e., natural gas delivered to its destination via the other country).

<sup>h</sup> See Note 6, "Natural Gas Consumption," at end of section.

<sup>i</sup> May include unknown quantities of nonhydrocarbon gases.

<sup>j</sup> For 1989-1992, a small amount of consumption at independent power producers may be counted in both "Other Industrial" and "Electric Power Sector" on Table 4.3. See Note 7, "Natural Gas Consumption, 1989-1992," at end of section.

R=Revised. E=Estimate. NA=Not available.

Notes: • See Note 8, "Natural Gas Adjustments, 1993-2000," at end of section.

• Totals may not equal sum of components due to independent rounding.

• Geographic coverage is the 50 States and the District of Columbia.

Web Page: See <http://www.eia.gov/totalenergy/data/monthly/#naturalgas> for all available data beginning in 1973.

Sources: • Imports and Exports: Table 4.2. • Consumption: Table 4.3.

• Balancing Item: Calculated as consumption minus dry gas production, supplemental gaseous fuels, net imports, and net storage withdrawals. • All Other Data: 1973-2006—U.S. Energy Information Administration (EIA), *Natural Gas Annual*, annual reports. 2007 forward—EIA, *Natural Gas Monthly*, August 2012, Table 1.

**Table 4.2 Natural Gas Trade by Country**  
(Billion Cubic Feet)

	Imports									Exports				
	Algeria <sup>a</sup>	Canada <sup>b</sup>	Egypt <sup>a</sup>	Mexico <sup>b</sup>	Nigeria <sup>a</sup>	Qatar <sup>a</sup>	Trinidad and Tobago <sup>a</sup>	Other <sup>a,c</sup>	Total	Canada <sup>b</sup>	Japan <sup>a</sup>	Mexico <sup>b</sup>	Other <sup>a,d</sup>	Total
<b>1973 Total</b> .....	3	1,028	0	2	0	0	0	0	1,033	15	48	14	0	77
<b>1975 Total</b> .....	5	948	0	0	0	0	0	0	953	10	53	9	0	73
<b>1980 Total</b> .....	86	797	0	102	0	0	0	0	985	0	45	4	0	49
<b>1985 Total</b> .....	24	926	0	0	0	0	0	0	950	0	53	2	0	55
<b>1990 Total</b> .....	84	1,448	0	0	0	0	0	0	1,532	17	53	16	0	86
<b>1995 Total</b> .....	18	2,816	0	7	0	0	0	0	2,841	28	65	61	0	154
<b>1996 Total</b> .....	35	2,883	0	14	0	0	0	5	2,937	52	68	34	0	153
<b>1997 Total</b> .....	66	2,899	0	17	0	0	0	12	2,994	56	62	38	0	157
<b>1998 Total</b> .....	69	3,052	0	15	0	0	0	17	3,152	40	66	53	0	159
<b>1999 Total</b> .....	76	3,368	0	55	0	20	51	17	3,586	39	64	61	0	163
<b>2000 Total</b> .....	47	3,544	0	12	13	46	99	21	3,782	73	66	106	0	244
<b>2001 Total</b> .....	65	3,729	0	10	38	23	98	14	3,977	167	66	141	0	373
<b>2002 Total</b> .....	27	3,785	0	2	8	35	151	8	4,015	189	63	263	0	516
<b>2003 Total</b> .....	53	3,437	0	0	50	14	378	11	3,944	271	66	343	0	680
<b>2004 Total</b> .....	120	3,607	0	0	12	12	462	46	4,259	395	62	397	0	854
<b>2005 Total</b> .....	97	3,700	73	9	8	3	439	11	4,341	358	65	305	0	729
<b>2006 Total</b> .....	17	3,590	120	13	57	0	389	0	4,186	341	61	322	0	724
<b>2007 Total</b> .....	77	3,783	115	54	95	18	448	18	4,608	482	47	292	2	822
<b>2008 Total</b> .....	0	3,589	55	43	12	3	267	15	3,984	559	39	365	0	963
<b>2009 Total</b> .....	0	3,271	160	28	13	13	236	29	3,751	701	31	338	3	1,072
<b>2010</b>														
January .....	0	327	17	1	0	12	22	6	385	68	2	23	0	94
February .....	0	277	12	1	0	6	16	12	324	60	2	22	3	88
March .....	0	276	9	5	3	1	16	9	319	77	2	21	0	100
April .....	0	252	6	5	9	9	15	3	298	50	4	22	0	76
May .....	0	257	9	4	9	0	16	3	298	55	2	29	0	86
June .....	0	248	6	2	11	0	11	5	282	51	2	34	3	90
July .....	0	291	6	1	5	0	17	8	329	50	4	32	0	86
August .....	0	282	0	1	0	0	17	5	305	49	2	33	0	84
September .....	0	250	6	3	3	0	16	3	282	50	7	23	0	79
October .....	0	257	3	4	2	5	15	9	295	63	2	25	6	96
November .....	0	242	0	(s)	0	9	14	9	273	84	2	30	8	124
December .....	0	322	0	1	0	4	15	9	352	82	3	38	12	135
<b>Total</b> .....	<b>0</b>	<b>3,280</b>	<b>73</b>	<b>30</b>	<b>42</b>	<b>46</b>	<b>190</b>	<b>81</b>	<b>3,741</b>	<b>739</b>	<b>33</b>	<b>333</b>	<b>32</b>	<b>1,137</b>
<b>2011</b>														
January .....	0	331	3	(s)	0	13	16	9	371	85	2	37	13	136
February .....	0	276	6	(s)	0	0	11	15	308	84	2	37	3	125
March .....	0	275	6	(s)	0	14	10	9	314	98	2	41	3	145
April .....	0	245	6	(s)	0	4	11	13	278	76	2	43	6	127
May .....	0	235	3	(s)	0	24	8	0	271	80	3	44	6	132
June .....	0	238	6	(s)	0	5	11	6	265	71	2	47	0	120
July .....	0	272	0	(s)	0	5	13	3	293	64	0	47	3	113
August .....	0	249	0	(s)	2	8	11	9	279	67	2	42	0	111
September .....	0	233	0	(s)	0	4	8	9	253	77	2	39	8	127
October .....	0	R 249	3	1	0	8	8	12	281	64	0	43	3	110
November .....	0	232	0	(s)	0	3	12	0	247	84	2	39	3	128
December .....	0	269	3	(s)	0	4	10	9	295	87	0	42	5	134
<b>Total</b> .....	<b>0</b>	<b>3,104</b>	<b>35</b>	<b>3</b>	<b>2</b>	<b>91</b>	<b>129</b>	<b>92</b>	<b>3,456</b>	<b>937</b>	<b>18</b>	<b>500</b>	<b>52</b>	<b>1,507</b>
<b>2012</b>														
January .....	0	265	0	(s)	0	4	9	3	281	84	3	40	3	130
February .....	0	249	3	(s)	0	0	11	6	269	87	2	42	0	130
March .....	0	246	0	(s)	0	4	13	3	265	93	0	46	3	141
April .....	0	235	0	(s)	0	4	1	3	243	77	0	45	0	122
May .....	0	240	0	(s)	0	6	11	0	257	79	3	52	0	134
June .....	0	250	0	(s)	0	0	8	0	258	64	2	58	0	125
<b>6-Month Total</b> .....	<b>0</b>	<b>1,486</b>	<b>3</b>	<b>(s)</b>	<b>0</b>	<b>16</b>	<b>54</b>	<b>14</b>	<b>1,573</b>	<b>483</b>	<b>10</b>	<b>284</b>	<b>6</b>	<b>782</b>
<b>2011 6-Month Total</b> .....	<b>0</b>	<b>1,600</b>	<b>29</b>	<b>1</b>	<b>0</b>	<b>60</b>	<b>67</b>	<b>51</b>	<b>1,807</b>	<b>494</b>	<b>12</b>	<b>248</b>	<b>30</b>	<b>784</b>
<b>2010 6-Month Total</b> .....	<b>0</b>	<b>1,637</b>	<b>58</b>	<b>19</b>	<b>31</b>	<b>28</b>	<b>96</b>	<b>37</b>	<b>1,906</b>	<b>362</b>	<b>13</b>	<b>151</b>	<b>6</b>	<b>533</b>

<sup>a</sup> As liquefied natural gas.

<sup>b</sup> By pipeline, except for very small amounts of liquefied natural gas imported from Canada in 1973, 1977, and 1981 and exported to Mexico beginning in 1998. See Note 9, "Natural Gas Imports and Exports," at end of section.

<sup>c</sup> Australia in 1997-2001 and 2004; Brunei in 2002; Equatorial Guinea in 2007; Indonesia in 1986 and 2000; Malaysia in 1999 and 2002-2005; Norway in 2008 forward; Oman in 2000-2005; Peru in 2010 and 2011; United Arab Emirates in 1996-2000; Yemen in 2010 forward; and Other (unassigned) in 2004.

<sup>d</sup> Brazil in 2010 forward; China in 2011; Chile in 2011; India in 2010 forward; Russia in 2007; South Korea in 2009-2011; Spain in 2010 and 2011; and United Kingdom in 2010 and 2011.

R=Revised. (s)=Less than 500 million cubic feet.

Notes: • See Note 9, "Natural Gas Imports and Exports," at end of section. • Totals may not equal sum of components due to independent rounding. • U.S. geographic coverage is the 50 States and the District of Columbia.

Web Page: See <http://www.eia.gov/totalenergy/data/monthly/#naturalgas> for all available data beginning in 1973.

Sources: • **1973-1987**: U.S. Energy Information Administration (EIA), Form FPC-14, "Annual Report for Importers and Exporters of Natural Gas." • **1988-2009**: EIA, *Natural Gas Annual*, annual reports. • **2010 forward**: EIA, *Natural Gas Monthly*, August 2012, Tables 4 and 5; and U.S. Department of Energy, Office of Fossil Energy, "Natural Gas Imports and Exports."

**Table 4.3 Natural Gas Consumption by Sector**  
(Billion Cubic Feet)

	End-Use Sectors										Electric Power Sector <sup>1,9</sup>	Total
	Residential	Commercial <sup>2</sup>	Lease and Plant Fuel	Industrial			Transportation					
				CHP <sup>b</sup>	Non-CHP <sup>c</sup>	Total	Total	Pipelines <sup>d</sup> and Distribution <sup>e</sup>	Vehicle Fuel	Total		
1973 Total	4,879	2,597	1,496	{ h }	8,689	8,689	10,185	728	NA	728	3,660	22,049
1975 Total	4,924	2,508	1,396	{ h }	6,968	6,968	8,365	583	NA	583	3,158	19,538
1980 Total	4,752	2,611	1,026	{ h }	7,172	7,172	8,198	635	NA	635	3,682	19,877
1985 Total	4,433	2,432	966	{ h }	5,901	5,901	6,867	504	NA	504	3,044	17,281
1990 Total	4,391	2,623	1,236	1,055	5,963	7,018	8,255	660	(s)	660	3,245	19,174
1995 Total	4,850	3,031	1,220	1,258	6,906	8,164	9,384	700	5	705	4,237	22,207
1996 Total	5,241	3,158	1,250	1,289	7,146	8,435	9,685	711	6	718	3,807	22,609
1997 Total	4,984	3,215	1,203	1,282	7,229	8,511	9,714	751	8	760	4,065	22,737
1998 Total	4,520	2,999	1,173	1,355	6,965	8,320	9,493	635	9	645	4,588	22,246
1999 Total	4,726	3,045	1,079	1,401	6,678	8,079	9,158	645	12	657	4,820	22,405
2000 Total	4,996	3,182	1,151	1,386	6,757	8,142	9,293	642	13	655	5,206	23,333
2001 Total	4,771	3,023	1,119	1,310	6,035	7,344	8,463	625	15	640	5,342	22,239
2002 Total	4,889	3,144	1,113	1,240	6,287	7,527	8,640	667	15	682	5,672	23,027
2003 Total	5,079	3,179	1,122	1,144	6,007	7,150	8,273	591	18	610	5,135	22,277
2004 Total	4,869	3,129	1,098	1,191	6,066	7,256	8,354	566	21	587	5,464	22,403
2005 Total	4,827	2,999	1,112	1,084	5,518	6,601	7,713	584	23	607	5,869	22,014
2006 Total	4,368	2,832	1,142	1,115	5,412	6,527	7,669	584	24	608	6,222	21,699
2007 Total	4,722	3,013	1,226	1,050	5,604	6,655	7,881	621	25	646	6,841	23,104
2008 Total	4,892	3,153	1,220	955	5,715	6,670	7,890	648	26	674	6,668	23,277
2009 Total	4,779	3,119	1,275	990	5,178	6,167	7,443	670	27	697	6,873	22,910
2010 January	934	499	106	90	526	616	722	80	3	82	546	2,783
February	796	441	98	80	490	570	667	70	2	72	480	2,456
March	580	337	109	84	488	572	681	60	3	62	457	2,117
April	313	215	104	79	435	514	618	46	3	49	471	1,667
May	198	161	107	82	437	519	626	44	3	47	560	1,591
June	134	130	102	84	420	504	607	45	3	48	706	1,624
July	111	120	107	91	420	512	619	50	3	53	897	1,800
August	107	127	108	95	419	514	622	52	3	55	943	1,853
September	117	133	107	87	424	511	618	45	3	47	697	1,612
October	202	185	112	84	438	522	634	45	3	48	570	1,639
November	447	287	108	82	469	551	659	55	3	57	497	1,947
December	848	467	114	92	521	613	727	76	3	79	564	2,685
Total	4,787	3,102	1,282	1,029	5,488	6,517	7,800	669	31	700	7,387	23,775
2011 January	R 972	E 529	E 113	89	R 545	R 634	R 747	E 81	E 3	E 84	542	R 2,875
February	R 771	E 433	E 100	79	R 496	R 575	R 676	E 68	E 3	E 71	482	R 2,433
March	607	R 365	E 116	81	R 508	R 590	R 705	E 63	E 3	E 65	483	R 2,225
April	R 348	E 236	E 113	82	R 463	R 545	R 659	E 51	E 3	E 54	526	R 1,823
May	208	E 168	E 117	87	R 454	R 540	R 658	E 47	E 3	E 50	578	R 1,661
June	R 134	R 132	E 113	83	R 431	R 514	R 627	E 46	E 3	E 49	705	R 1,646
July	112	R 130	E 117	88	R 432	R 520	R 637	E 53	E 3	E 56	942	R 1,876
August	109	R 135	E 117	89	R 442	R 531	R 649	E 53	E 3	E 55	923	1,872
September	122	141	E 115	84	R 442	R 526	R 641	E 46	E 3	E 49	686	R 1,639
October	R 227	R 214	E 121	81	R 467	R 548	R 669	E 49	E 3	E 52	578	R 1,739
November	R 430	R 284	E 119	86	R 486	R 571	R 690	E 56	E 3	E 59	543	2,006
December	688	398	E 122	94	R 525	R 619	R 741	E 71	E 3	E 74	612	R 2,514
Total	R 4,730	R 3,164	E 1,383	1,024	R 5,691	R 6,714	R 8,098	E 684	E 33	E 717	7,602	R 24,310
2012 January	R 803	E 448	E 123	94	534	628	751	E 77	E 3	E 80	651	R 2,734
February	668	R 390	E 114	87	507	594	R 707	E 70	E 3	E 73	649	R 2,487
March	408	263	E 122	89	R 483	R 572	694	E 59	E 3	E 60	680	2,107
April	283	212	E 118	84	463	547	665	E 55	E 3	E 57	724	R 1,941
May	165	150	RE 123	90	R 450	R 541	R 663	E 52	E 3	E 55	819	R 1,852
June	125	133	E 118	92	441	533	651	E 52	E 3	E 55	884	1,847
6-Month Total	2,451	1,596	E 718	536	2,878	3,415	4,132	E 365	E 16	E 381	4,407	12,967
2011 6-Month Total	3,041	1,862	E 672	502	2,897	3,399	4,071	E 356	E 16	E 373	3,316	12,663
2010 6-Month Total	2,955	1,783	626	498	2,797	3,295	3,921	345	15	360	3,219	12,238

<sup>a</sup> All commercial sector fuel use, including that at commercial combined-heat-and-power (CHP) and commercial electricity-only plants. See Table 7.4c for CHP fuel use.

<sup>b</sup> Industrial combined-heat-and-power (CHP) and a small number of industrial electricity-only plants.

<sup>c</sup> All industrial sector fuel use other than that in "Lease and Plant Fuel" and "CHP."

<sup>d</sup> Natural gas consumed in the operation of pipelines, primarily in compressors.

<sup>e</sup> Natural gas used as fuel in the delivery of natural gas to consumers.

<sup>f</sup> The electric power sector comprises electricity-only and combined-heat-and-power (CHP) plants within the NAICS 22 category whose primary business is to sell electricity, or electricity and heat, to the public.

<sup>g</sup> Through 1988, data are for electric utilities only. Beginning in 1989, data are for electric utilities and independent power producers.

<sup>h</sup> Included in "Non-CHP."

<sup>i</sup> For 1989-1992, a small amount of consumption at independent power producers may be counted in both "Other Industrial" and "Electric Power Sector." See Note 7, "Natural Gas Consumption, 1989-1992," at end of section.

R=Revised. E=Estimate. NA=Not available. (s)=Less than 500 million cubic feet.

Notes: • Data are for natural gas, plus a small amount of supplemental

gaseous fuels. • See Note 8, "Natural Gas Adjustments, 1993-2000," at end of section. • See Note, "Classification of Power Plants Into Energy-Use Sectors," at end of Section 7. • Totals may not equal sum of components due to independent rounding. • Geographic coverage is the 50 States and the District of Columbia.

Web Page: See <http://www.eia.gov/totalenergy/data/monthly/#naturalgas> for all available data beginning in 1973.

Sources: • Residential, Commercial, Lease and Plant Fuel, Other Industrial Total and Pipelines and Distribution: 1973-2006—U.S. Energy Information Administration (EIA), *Natural Gas Annual (NGA)*, annual reports and unpublished revisions. 2007 forward—EIA, *Natural Gas Monthly (NGM)*, August 2012, Table 2. • Industrial CHP: Table 7.4c. • Vehicle Fuel: 1990 and 1991—EIA, NGA 2000, (November 2001), Table 95. 1992-1998—EIA, "Alternatives to Traditional Transportation Fuels 1999" (October 1999), Table 10, and "Alternatives to Traditional Transportation Fuels 2003" (February 2004), Table 10. Data for compressed natural gas and liquefied natural gas in gasoline-equivalent gallons were converted to cubic feet by multiplying by the motor gasoline conversion factor (see Table A3) and dividing by the natural gas end-use sectors conversion factor (see Table A4). 1999-2006—EIA, NGA, annual reports. 2007 forward—EIA, NGM, August 2012, Table 2. • Electric Power Sector: Table 7.4b.

**Table 4.4 Natural Gas in Underground Storage**  
(Volumes in Billion Cubic Feet)

	Natural Gas in Underground Storage, End of Period			Change in Working Gas From Same Period Previous Year		Storage Activity		
	Base Gas	Working Gas	Total <sup>a</sup>	Volume	Percent	Withdrawals	Injections	Net <sup>b,c</sup>
<b>1973 Total</b> .....	2,864	2,034	4,898	305	17.6	1,533	1,974	-442
<b>1975 Total</b> .....	3,162	2,212	5,374	162	7.9	1,760	2,104	-344
<b>1980 Total</b> .....	3,642	2,655	6,297	-99	-3.6	1,910	1,896	14
<b>1985 Total</b> .....	3,842	2,607	6,448	-270	-9.4	2,359	2,128	231
<b>1990 Total</b> .....	3,868	3,068	6,936	555	22.1	1,934	2,433	-499
<b>1995 Total</b> .....	4,349	2,153	6,503	-453	-17.4	2,974	2,566	408
<b>1996 Total</b> .....	4,341	2,173	6,513	19	.9	2,911	2,906	6
<b>1997 Total</b> .....	4,350	2,175	6,525	2	.1	2,824	2,800	24
<b>1998 Total</b> .....	4,326	2,730	7,056	554	25.5	2,379	2,905	-526
<b>1999 Total</b> .....	4,383	2,523	6,906	-207	-7.6	2,772	2,598	174
<b>2000 Total</b> .....	4,352	1,719	6,071	-806	-31.9	3,498	2,684	814
<b>2001 Total</b> .....	4,301	2,904	7,204	1,185	68.9	2,309	3,464	-1,156
<b>2002 Total</b> .....	4,340	2,375	6,715	-528	-18.2	3,138	2,670	468
<b>2003 Total</b> .....	4,303	2,563	6,866	187	7.9	3,099	3,292	-193
<b>2004 Total</b> .....	4,201	2,696	6,897	133	5.2	3,037	3,150	-113
<b>2005 Total</b> .....	4,200	2,635	6,835	-61	-2.3	3,057	3,002	55
<b>2006 Total</b> .....	4,211	3,070	7,281	435	16.5	2,493	2,924	-431
<b>2007 Total</b> .....	4,234	2,879	7,113	-191	-6.2	3,325	3,133	192
<b>2008 Total</b> .....	4,232	2,840	7,073	-39	-1.4	3,374	3,340	34
<b>2009 Total</b> .....	4,277	3,130	7,407	290	10.2	2,966	3,315	-349
<b>2010</b> January .....	4,276	2,304	6,580	171	8.0	873	63	811
February .....	4,278	1,683	5,961	-75	-4.2	657	38	619
March .....	4,278	1,652	5,930	-7	-.4	238	207	31
April .....	4,278	2,011	6,289	101	5.3	68	427	-360
May .....	4,279	2,420	6,699	45	1.9	53	463	-410
June .....	4,287	2,740	7,027	-20	-.7	64	385	-321
July .....	4,287	2,966	7,253	-125	-4.0	112	339	-227
August .....	4,290	3,153	7,443	-206	-6.1	137	323	-186
September .....	4,294	3,508	7,801	-138	-3.8	52	411	-359
October .....	4,305	3,851	8,156	41	1.1	52	407	-355
November .....	4,309	3,769	8,078	-69	-1.8	237	163	74
December .....	4,301	3,111	7,412	-19	-.6	731	66	665
<b>Total</b> .....	<b>4,301</b>	<b>3,111</b>	<b>7,412</b>	<b>-19</b>	<b>-.6</b>	<b>3,274</b>	<b>3,291</b>	<b>-17</b>
<b>2011</b> January .....	4,306	2,308	6,614	4	.2	852	53	799
February .....	4,306	1,724	6,029	40	2.4	668	84	584
March .....	4,304	1,581	5,884	-72	-4.3	317	172	145
April .....	4,307	1,789	6,096	-222	-11.0	108	320	-212
May .....	4,308	2,188	6,495	-232	-9.6	66	464	-398
June .....	4,305	2,530	6,835	-210	-7.7	90	430	-340
July .....	4,304	2,774	7,079	-192	-6.5	124	368	-244
August .....	4,304	3,020	7,323	-133	-4.2	138	382	-244
September .....	4,305	3,416	7,721	-92	-2.6	64	462	-398
October .....	4,305	3,804	8,109	-46	-1.2	62	448	-385
November .....	4,302	3,843	8,145	74	2.0	198	235	-37
December .....	4,305	3,462	7,767	351	11.3	488	105	384
<b>Total</b> .....	<b>4,305</b>	<b>3,462</b>	<b>7,767</b>	<b>351</b>	<b>11.3</b>	<b>3,175</b>	<b>3,523</b>	<b>-348</b>
<b>2012</b> January .....	4,307	2,916	7,223	608	26.4	633	88	545
February .....	4,307	2,455	6,762	731	42.4	526	67	459
March .....	4,325	2,477	6,802	896	56.7	217	256	-39
April .....	4,329	2,613	6,942	824	46.1	144	282	-137
May .....	4,334	2,890	7,225	703	32.1	92	375	-283
June .....	4,337	3,118	7,456	589	23.3	109	339	-230
<b>6-Month Total</b> .....	<b>--</b>	<b>--</b>	<b>--</b>	<b>--</b>	<b>--</b>	<b>1,722</b>	<b>1,407</b>	<b>315</b>
<b>2011 6-Month Total</b> .....	<b>--</b>	<b>--</b>	<b>--</b>	<b>--</b>	<b>--</b>	<b>2,101</b>	<b>1,524</b>	<b>577</b>
<b>2010 6-Month Total</b> .....	<b>--</b>	<b>--</b>	<b>--</b>	<b>--</b>	<b>--</b>	<b>1,952</b>	<b>1,582</b>	<b>370</b>

<sup>a</sup> For total underground storage capacity at the end of each calendar year, see Note 4, "Natural Gas Storage," at end of section.

<sup>b</sup> For 1980-2010, data differ from those shown on Table 4.1, which includes liquefied natural gas storage for that period.

<sup>c</sup> Positive numbers indicate that withdrawals are greater than injections. Negative numbers indicate that injections are greater than withdrawals. Net withdrawals or injections may not equal the difference between applicable ending stocks. See Note 4, "Natural Gas Storage," at end of section.

Notes: • Totals may not equal sum of components due to independent rounding. • Geographic coverage is the 50 States and the District of Columbia.

Web Page: See <http://www.eia.gov/totalenergy/data/monthly/#naturalgas> for all available data beginning in 1973.

Sources: • **Storage Activity: 1973-1975**—U.S. Energy Information Administration (EIA), *Natural Gas Annual 1994, Volume 2*, Table 9.

**1976-1979**—EIA, *Natural Gas Production and Consumption 1979*, Table 1.

**1980-1995**—EIA, *Historical Natural Gas Annual 1930 Through 2000*, Table 11.

**1996-2006**—EIA, *Natural Gas Monthly (NGM)*, monthly issues. **2007 forward**—EIA, NGM, August 2012, Table 8.

• **All Other Data: 1973 and 1974**—American Gas Association, *Gas Facts, 1972 Data*, Table 57, *Gas Facts, 1973 Data*, Table 57, and *Gas Facts, 1974 Data*, Table 40. **1975 and 1976**—Federal Energy Administration (FEA), Form FEA-G318-M-0, "Underground Gas Storage Report," and Federal Power Commission (FPC), Form FPC-8, "Underground Gas Storage Report."

**1977 and 1978**—EIA, Form FEA-G318-M-0, "Underground Gas Storage Report," and Federal Energy Regulatory Commission (FERC), Form FERC-8, "Underground Gas Storage Report."

**1979-1995**—EIA, Form EIA-191, "Underground Gas Storage Report," and FERC, Form FERC-8, "Underground Gas Storage Report."

**1996-2006**—EIA, NGM, monthly issues. **2007 forward**—EIA, NGM, August 2012, Table 8.

## Natural Gas

**Note 1. Natural Gas Production.** Final annual data are from the U.S. Energy Information Administration (EIA) *Natural Gas Annual (NGA)*.

Data for the two most recent months presented are estimated. Some of the data for earlier months are also estimated or computed. For a discussion of computation and estimation procedures, see the EIA *Natural Gas Monthly (NGM)*.

Monthly data are considered preliminary until after publication of the EIA NGA. Preliminary monthly data are gathered from reports to the Interstate Oil Compact Commission and the U.S. Minerals Management Service. Volumetric data are converted, as necessary, to a standard 14.73 psi pressure base. Unless there are major changes, data are not revised until after publication of the EIA NGA.

Differences between annual data in the EIA NGA and the sum of preliminary monthly data (January–December) are allocated proportionally to the months to create final monthly data.

**Note 2. Natural Gas Extraction Loss.** Extraction loss is the reduction in volume of natural gas resulting from the removal of natural gas liquid constituents at natural gas processing plants.

Annual data are from the EIA NGA, where they are estimated on the basis of the type and quantity of liquid products extracted from the gas stream and the calculated volume of such products at standard conditions. For a detailed explanation of the calculations used to derive estimated extraction losses, see the EIA NGA.

Preliminary monthly data are estimated on the basis of extraction loss as an annual percentage of marketed production. This percentage is applied to each month's marketed production to estimate monthly extraction loss.

Monthly data are revised and considered final after the publication of the EIA NGA. Final monthly data are estimated by allocating annual extraction loss data to the months on the basis of total natural gas marketed production data from the EIA NGA.

**Note 3. Supplemental Gaseous Fuels.** Supplemental gaseous fuels are any substances that, introduced into or commingled with natural gas, increase the volume available for disposition. Such substances include, but are not limited to, propane-air, refinery gas, coke oven gas, still gas, manufactured gas, biomass gas, and air or inert gases added for Btu stabilization.

Annual data beginning with 1980 are from the EIA NGA. Unknown quantities of supplemental gaseous fuels are included in consumption data for 1979 and earlier years.

Monthly data are considered preliminary until after the publication of the EIA NGA. Monthly estimates are based on the annual ratio of supplemental gaseous fuels to the sum of dry gas production, net imports, and net withdrawals from storage. The ratio is applied to the monthly sum of the three elements to compute a monthly supplemental gaseous fuels figure.

Although the total amount of supplemental gaseous fuels consumed is known for 1980 forward, the amount consumed by each energy-use sector is estimated by EIA. These estimates are used to create natural gas (without supplemental gaseous fuels) data for Tables 1.3, 2.2, 2.3, 2.4, and 2.6 (note: to avoid double-counting in these tables, supplemental gaseous fuels are accounted for in their primary energy category: "Coal," "Petroleum," or "Biomass"). It is assumed that supplemental gaseous fuels are commingled with natural gas consumed by the residential, commercial, other industrial, and electric power sectors, but are not commingled with natural gas used for lease and plant fuel, pipelines and distribution, or vehicle fuel. The estimated consumption of supplemental gaseous fuels by each sector (residential, commercial, other industrial, and electric power) is calculated as that sector's natural gas consumption (see Table 4.3) divided by the sum of natural gas consumption by the residential, commercial, other industrial, and electric power sectors (see Table 4.3), and then multiplied by total supplemental gaseous fuels consumption (see Table 4.1). For estimated sectoral consumption of supplemental gaseous fuels in Btu, the residential, commercial, and other industrial values in cubic feet are multiplied by the "End-Use Sectors" conversion factors (see Table A4), and the electric power values in cubic feet are multiplied by the "Electric Power Sector" conversion factors (see Table A4). Total supplemental gaseous fuels consumption in Btu is calculated as the sum of the Btu values for the sectors.

**Note 4. Natural Gas Storage.** Natural gas in storage at the end of a reporting period may not equal the quantity derived by adding or subtracting net injections or withdrawals from the quantity in storage at the end of the previous period. The difference is due to changes in the quantity of native gas included in the base gas and/or losses in base gas due to migration from storage reservoirs.

Total underground storage capacity, which includes both active and inactive fields, at the end of each calendar year since 1975 (first year data were available), in billion cubic feet, was:

1975 ...	6,280	1988 ...	8,124	2001 ...	8,182
1976 ...	6,544	1989 ...	8,120	2002 ...	8,207
1977 ...	6,678	1990 ...	7,794	2003 ...	8,206
1978 ...	6,890	1991 ...	7,993	2004 ...	8,255
1979 ...	6,929	1992 ...	7,932	2005 ...	8,268
1980 ...	7,434	1993 ...	7,989	2006 ...	8,330
1981 ...	7,805	1994 ...	8,043	2007 ...	8,402
1982 ...	7,915	1995 ...	7,953	2008 ...	8,499
1983 ...	7,985	1996 ...	7,980	2009 ...	8,656
1984 ...	8,043	1997 ...	8,332	2010 ...	8,764
1985 ...	8,087	1998 ...	8,179	2011 ...	<sup>P</sup> 8,776
1986 ...	8,145	1999 ...	8,229		
1987 ...	8,124	2000 ...	8,241		

P=Preliminary

Monthly underground storage data are collected from the Federal Energy Regulatory Commission Form FERC-8 (interstate data) and EIA Form EIA-191 (intrastate data). Beginning in January 1991, all data are collected on the revised Form EIA-191. Injection and withdrawal data from the FERC-8/EIA-191 survey are adjusted to correspond to data from Form EIA-176 following publication of the EIA NGA.

The final monthly and annual storage and withdrawal data for 1980–2010 include both underground and liquefied natural gas (LNG) storage. Annual data on LNG additions and withdrawals are from Form EIA-176. Monthly data are estimated by computing the ratio of each month's underground storage additions and withdrawals to annual underground storage additions and withdrawals and applying the ratio to the annual LNG data.

**Note 5. Natural Gas Balancing Item.** The balancing item for natural gas represents the difference between the sum of the components of natural gas supply and the sum of components of natural gas disposition. The differences may be due to quantities lost or to the effects of data reporting problems. Reporting problems include differences due to the net result of conversions of flow data metered at varying temperature and pressure bases and converted to a standard temperature and pressure base; the effect of variations in company accounting and billing practices; differences between billing cycle and calendar period time frames; and imbalances resulting from the merger of data reporting systems that vary in scope, format, definitions, and type of respondents.

The increase of 0.2 trillion cubic feet (Tcf) in the “Balancing Item” category in 1983, followed by a decline of 0.5 Tcf in 1984, reflected unusually large differences resulting from the use of the annual billing cycle (essentially December 15 through the following December 14) consumption data in conjunction with calendar year supply data. Record cold temperatures during the last half of December 1983 resulted in a reported 0.3 Tcf increase in net withdrawals from underground storage for peak shaving as compared with the same period in 1982, but the effect of this cold weather was reflected primarily in 1984 consumption data. For underground storage data, see Table F2 in the May 1985 EIA NGM, which was published in July 1985.

**Note 6. Natural Gas Consumption.** Consumption includes use for lease and plant fuel, pipelines and distribution, vehicle fuel, and electric power plants, as well as deliveries to residential, commercial, and other industrial customers.

Final data for series other than “Other Industrial CHP” and “Electric Power Sector” are from the EIA NGA. Monthly data are considered preliminary until after publication of the EIA NGA. For more detailed information on the methods of estimating preliminary and final monthly data, see the EIA NGM.

**Note 7. Natural Gas Consumption, 1989–1992.** Prior to 1993, deliveries to nonutility generators were not separately collected from natural gas companies on Form

EIA-176, “Annual Report of Natural and Supplemental Gas Supply and Disposition.” As a result, for 1989 through 1992, those volumes are probably included in both the industrial and electric power sectors and double-counted in total consumption. In 1993, 0.28 trillion cubic feet was reported as delivered to nonutility generators.

**Note 8. Natural Gas Data Adjustments, 1993–2000.** For 1993–2000, the original data for natural gas delivered to industrial consumers (now “Other Industrial” in Table 4.3) included deliveries to both industrial users and independent power producers (IPPs). These data were adjusted to remove the estimated consumption at IPPs from “Other Industrial” and include it with electric utilities under “Electric Power Sector.” (To estimate the monthly IPP consumption, the monthly pattern for Other Industrial CHP in Table 4.3 was used.)

For 1996–2000, monthly data for several natural gas series shown in EIA's Natural Gas Navigator (see [http://www.eia.gov/dnav/ng/ng\\_cons\\_sum\\_dcu\\_nus\\_m.htm](http://www.eia.gov/dnav/ng/ng_cons_sum_dcu_nus_m.htm)) were not reconciled and updated to be consistent with the final annual data in EIA's NGA. In the *Monthly Energy Review*, monthly data for these series were adjusted so that the monthly data sum to the final annual values. The Table 4.1 data series (and years) that were adjusted are: Gross Withdrawals (1996, 1997), Marketed Production (1997), Extraction Loss (1997, 1998, 2000), Dry Gas Production (1996, 1997), Supplemental Gaseous Fuels (1997–2000), Balancing Item (1997–2000), and Total Consumption (1997–2000). The Table 4.3 data series (and years) that were adjusted are: Lease and Plant Fuel (1997–2000), Total Industrial (1997–2000), Pipelines and Distribution (2000), Total Transportation (2000), and Total Consumption (1997–2000).

**Note 9. Natural Gas Imports and Exports.** The United States imports natural gas via pipeline from Canada and Mexico; and imports liquefied natural gas (LNG) via tanker from Algeria, Australia, Brunei, Egypt, Equatorial Guinea, Indonesia, Malaysia, Nigeria, Norway, Oman, Peru, Qatar, Trinidad and Tobago, the United Arab Emirates, and Yemen. In addition, very small amounts of LNG arrived from Canada in 1973 (667 million cubic feet), 1977 (572 million cubic feet), and 1981 (6 million cubic feet). The United States exports natural gas via pipeline to Canada and Mexico; and exports LNG via tanker to Brazil, China, Chile, India, Japan, Russia, South Korea, Spain, and United Kingdom. Also, small amounts of LNG have gone to Mexico since 1998.

Annual and final monthly data are from the annual EIA Form FPC-14, “Annual Report for Importers and Exporters of Natural Gas,” which requires data to be reported by month for the calendar year.

Preliminary monthly data are EIA estimates. For a discussion of estimation procedures, see the EIA NGM. Preliminary data are revised after the publication of the EIA *U.S. Imports and Exports of Natural Gas*.