



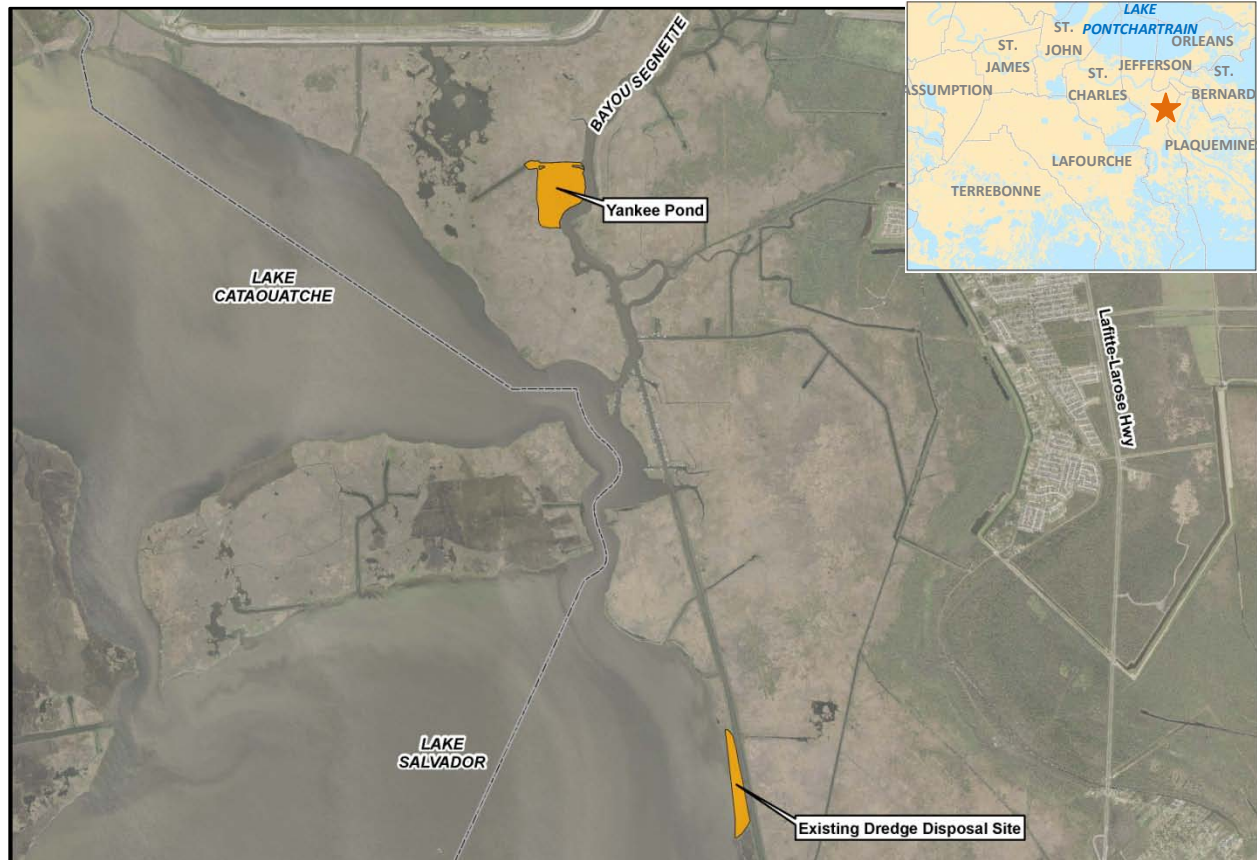
FACT SHEET: WBV HSDRRS MITIGATION

14 AUGUST 2012

U.S. ARMY CORPS OF ENGINEERS

BUILDING STRONG®

General Impacts – Jean Lafitte Marsh



Project Purpose

The purpose of this project is to mitigate for the unavoidable impacts incurred to fresh marsh habitat during construction of the Hurricane & Storm Damage Risk Reduction System.

Project Location

This project is located within the Jean Lafitte National Park on the west bank of Jefferson Parish, Louisiana.

Project Features

Approximately 115 acres of fresh marsh would be restored by filling Yankee Pond with material dredged from Lake Cataouatche. A rock dike with fish dips would be built on the eastern perimeter to separate the marsh from Bayou Segnette. Additionally, 50 acres of marsh would be restored by grading an existing dredge material disposal site to achieve target marsh elevations and completing a rock dike with fish dips adjacent to Lake Salvador. This project assumes natural recruitment and no planting would be required at either site to establish marsh vegetation. Supplemental planting would only occur if the initial vegetation success criteria are not achieved.

For more information, please visit www.nolaenvironmental.gov.

U.S. ARMY CORPS OF ENGINEERS – NEW ORLEANS DISTRICT

7400 LEAKE AVE., NEW ORLEANS, LA 70118

WWW.MVN.USACE.ARMY.MIL

www.facebook.com/usacenola

www.twitter.com/teamneworleans

www.flickr.com/teamneworleans