

# RECLAMATION

## *Managing Water in the West*

### Colorado River Accounting and Water Use Report Arizona, California, and Nevada

*Calendar Year 2010*



U.S. Department Of the Interior  
Bureau of Reclamation  
Lower Colorado Region

## **Mission Statements**

The mission of the Department of the Interior is to protect and provide access to our Nation's natural and cultural heritage and honor our trust responsibilities to Indian Tribes and our commitments to island communities.

The mission of Reclamation is to manage, develop, and protect water and related resources in an environmentally and economically sound manner in the interest of the American public.

# Colorado River Accounting and Water Use Report Arizona, California, and Nevada

Calendar Year 2010

*Prepared by*

**Lower Colorado Region  
Boulder Canyon Operations Office**

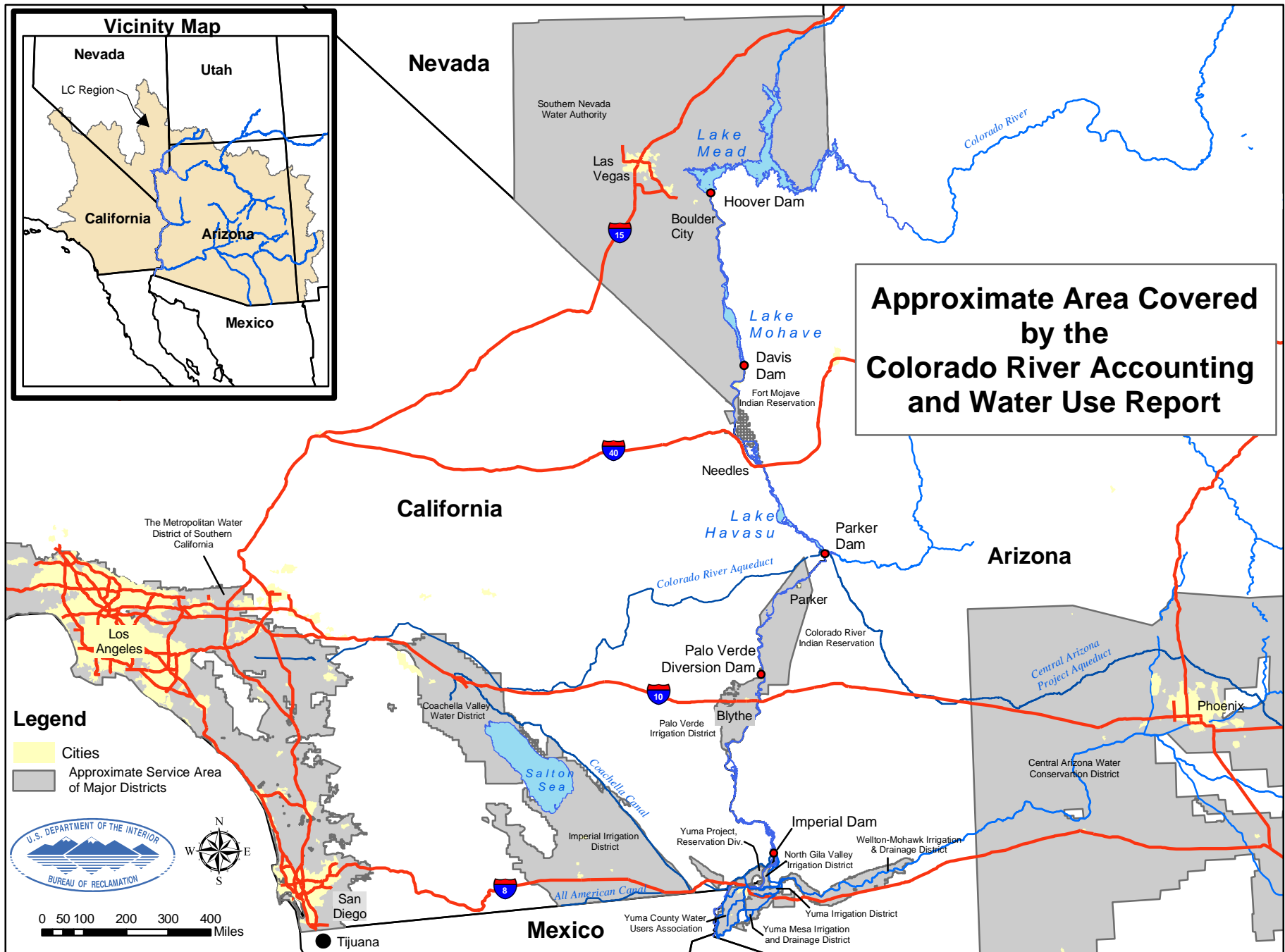
**Paul Matuska, LC-4200  
PO Box 61470  
Boulder City, NV 89006-1470**

**Phone: 702-293-8164  
FAX: 702-293-8042  
Email: [patuska@usbr.gov](mailto:patuska@usbr.gov)**



**U.S. Department of the Interior  
Bureau of Reclamation  
Lower Colorado Region  
Boulder Canyon Operations Office  
Water Conservation & Accounting Group**

May 2011



# TABLE OF CONTENTS

Location Map _____	Frontispiece
Acronyms and Abbreviated Terms _____	1
Summary _____	2
Reservoir Contents _____	3
<b>Compilation of Records in Accordance with Article V of the Consolidated Decree of the United States Supreme Court in <i>Arizona v. California</i>, 547 U.S. 150 (2006) (Consolidated Decree)</b> _____	4
V (A) Records of Releases of Water Through Regulatory Structures Controlled by the United States _____	5
V (B) Records of Diversions, Return Flows, and Consumptive Use _____	6
Arizona Users Reporting Monthly _____	7
Arizona Supplemental Tabulation _____	12
California Users Reporting Monthly _____	13
California Supplemental Tabulation _____	15
Nevada Users Reporting Monthly _____	17
V (C) Records of Water Ordered but not Delivered _____	19
Arizona _____	20
California _____	22
V (D) Records of Deliveries of Water to Mexico _____	23
V (E) Records of Diversions and Use for the Gila National Forest _____	24
<b>Information Supplemental to the Consolidated Decree</b> _____	25
Interstate Banking within the States of Arizona, California, and Nevada _____	26
Inadvertent Overruns and Paybacks within the States of Arizona, California, and Nevada _____	28
Summary of Water Availability and Use by States _____	32
Lower Colorado Water Supply Project _____	34
Conservation, Transfer, and Exchange Agreements _____	36
Intentionally Created Surplus _____	43
Significant Documents _____	45

## Acronyms and Abbreviated Terms

These acronyms and abbreviations are found in the text, footnotes, and headings within this document

AAC	All-American Canal	Ftns	Footnotes
AACLP	All-American Canal Lining Project	FYIR	Fort Yuma Indian Reservation
af	acre-feet	GGMC	Gila Gravity Main Canal
ADP	Arizona diesel pump	ICUA	intentionally created unused apportionment
ADW	Arizona diesel well	I.D.D.	irrigation and drainage district
AEP	Arizona electric pump	IBWC	International Boundary and Water Commission
AEW	Arizona electric well	ICS	Intentionally Created Surplus
ALTSC	accumulated long term storage credit	IID	Imperial Irrigation District
AOP	Annual Operating Plan	IOPP	Inadvertent Overrun and Payback Policy
APS	Arizona Public Service	ISG	Colorado River Interim Surplus Guidelines
ASLD	Arizona State Land Department	IUS	Interstate Underground Storage credits
Assn.	Association	kaf	kilo (thousand) acre-feet
AWBA	Arizona Water Banking Authority	LCWSP	Lower Colorado Water Supply Project
BLM	Bureau of Land Management	LHFO	Lake Havasu Field Office (BLM)
BOY	beginning of year	LLC	Limited Liability Company
BR	Bureau of Reclamation	LTD	Limited
CAWCD	Central Arizona Water Conservation District	LTSC	Long Term Storage Credit
CCLP	Coachella Canal Lining Project	MWD	The Metropolitan Water District of Southern California
CDP	California diesel pump	MOD	Main Outlet Drain
CDW	California diesel well	MODE	Main Outlet Drain Extension
CDEW	California diesel electric well	M&I	municipal and industrial
CEP	California electric pump	NWR	National Wildlife Refuge
CEW	California electric well	NIB	Northerly International Boundary
CFR	Code of Federal Regulations	PG & E	Pacific Gas and Electric Company
CO	Colorado	PVID	Palo Verde Irrigation District
CR	Colorado River	QSA	Quantification Settlement Agreement
CRBC	Colorado River Board of California	Res	Reservation
CRCN	Colorado River Commission of Nevada	SCE	Southern California Edison Company
CRIT	Colorado River Indian Tribes	SIB	Southerly International Boundary
CRWDA	Colorado River Water Delivery Agreement	SIRA	Storage and Interstate Release Agreement
CU	consumptive use	SDCWA	San Diego County Water Authority
CVWD	Coachella Valley Water District	SLRSP	San Luis Rey Settlement Parties
CY	calendar year	SNWA	Southern Nevada Water Authority
Diff.	difference	USGS	United States Geological Survey
Dist.	district	YAO	Yuma Area Office (Reclamation)
Div	diversion	YDP	Yuma Desalting Plant
DPOC	drainage pump outlet channel	YFO	Yuma Field Office (BLM)
ET	evapotranspiration	YID	Yuma Irrigation District
EOY	end of year	YMIDD	Yuma Mesa Irrigation and Drainage District
FEIS	Final Environmental Impact Statement		

SUMMARY  
 COLORADO RIVER ACCOUNTING AND WATER USE REPORT  
 CALENDAR YEAR 2010

5/12/11

(ACRE-FEET)

	JAN	FEB	MAR	APR	MAY	JUN	JUL	AUG	SEP	OCT	NOV	DEC	TOTAL	
<b>LOWER DIVISION STATES CONSUMPTIVE USE SUMMARY</b>														
ARIZONA	135,447	117,331	218,000	278,902	302,751	309,364	217,618	229,979	290,441	248,075	214,994	217,465	2,780,367	
CALIFORNIA	183,385	174,030	375,260	389,511	481,904	441,951	501,023	467,149	430,782	348,168	328,769	234,907	4,356,839	
NEVADA	6,654	5,400	12,305	19,249	28,041	28,120	34,322	33,449	23,184	23,914	17,359	9,440	241,437	
TOTAL CONSUMPTIVE USE - LOWER DIVISION STATES	325,486	296,761	605,565	687,662	812,696	779,435	752,963	730,577	744,407	620,157	561,122	461,812	7,378,643	
TO MEXICO IN SATISFACTION OF TREATY <sup>1</sup>	121,598	140,231	214,968	195,356	104,228	112,423	122,685	95,542	89,308	75,999	109,322	118,340	1,500,000	
WATER BYPASSED PURSUANT TO MINUTE 242 OF THE IBWC	11,286	8,969	12,059	11,616	9,316	6,829	4,886	3,863	10,342	13,799	12,692	11,807	117,464	
TO MEXICO IN EXCESS OF TREATY	52,787	664	18,056	14,139	9,941	246	3,367	5,039	3,427	30,186	4,646	28,826	171,324	
TOTAL CU. LOWER DIVISION STATES AND DELIVERIES TO MEXICO <sup>2</sup>	511,158	446,625	850,648	908,773	936,181	898,933	883,900	835,021	847,485	740,141	687,783	620,785	9,167,431	
<b>LCWSP WELLFIELD PUMPING SUMMARY <sup>3</sup></b>														
													NON-FEDERAL	
													FEDERAL	
													TOTAL	
													4,662	
													442	
													5,104	
<b>RESERVOIR CONTENTS SUMMARY</b>	<b>EOY 2009</b>	<b>JAN</b>	<b>FEB</b>	<b>MAR</b>	<b>APR</b>	<b>MAY</b>	<b>JUN</b>	<b>JUL</b>	<b>AUG</b>	<b>SEP</b>	<b>OCT</b>	<b>NOV</b>	<b>DEC</b>	<b>CHANGE</b>
LOWER BASIN TOTAL STORAGE <sup>4</sup>	13,312	13,826	14,008	13,790	13,602	13,263	12,874	12,664	12,606	12,227	12,010	12,075	12,533	-779
LOWER BASIN STORAGE PLUS LAKE POWELL <sup>5</sup>	27,746	27,817	27,788	27,491	27,418	27,668	28,738	28,260	27,975	27,494	27,325	26,963	27,002	-744
PERCENTAGE OF ACTIVE STORAGE - LOWER BASIN PLUS POWELL	52.7%	52.9%	52.8%	52.2%	52.1%	52.6%	54.6%	53.7%	53.2%	52.2%	51.9%	51.2%	51.3%	
<b>OFFSTREAM INTERSTATE STORAGE SUMMARY</b>		<b>BOY Balance</b>		<b>2010 Storage</b>		<b>2010 Recovered</b>		<b>EOY Balance</b>						
WATER STORED IN AZ FOR THE BENEFIT OF NV AND CA <sup>6</sup>	NEVADA		582,412		17,480		0		599,892					
	CALIFORNIA		8,159		0		8,159		0					
WATER STORED IN CA BY MWD FOR THE BENEFIT OF NV	NEVADA		70,000		0		0		70,000					

Note: Each section of this report and each sub-section within a section, has an independant sequence of footnotes.

**Footnotes:**

1. Deliveries to Mexico to satisfy treaty obligations.
2. Sum of Total Consumptive Use in the Lower Division States, Deliveries to Mexico in Satisfaction of Treaty, Water Bypassed Pursuant to Minute No. 242 of the IBWC and water passing to Mexico in excess of treaty obligations.
3. Pumpage from the Lower Colorado Water Supply Project wellfield to offset certain Colorado River water use in California.
4. Sum of end-of-month storage in Lower Basin Lakes Mead, Mohave, and Havasu. Values displayed are in thousands of acre-feet.
5. Sum of end-of-month storage in Upper Basin Lake Powell and Lower Basin Lakes Mead, Mohave, and Havasu. Values displayed are in thousands of acre-feet.
6. The value, 17,480 acre-feet, is provisional until verified by the Arizona Water Banking Authority.

RESERVOIR CONTENTS  
MONTHLY STORAGE CONTENTS OF THE COLORADO RIVER SYSTEM RESERVOIRS  
CALENDAR YEAR 2010

	5/12/11	THOUSAND ACRE-FEET <sup>1</sup>												CHANGE <sup>2</sup>
	EOY 2009	JAN	FEB	MAR	APR	MAY	JUN	JUL	AUG	SEP	OCT	NOV	DEC	
END OF MONTH ACTIVE CONTENTS														
LAKE POWELL	14,434	13,991	13,780	13,701	13,816	14,405	15,864	15,596	15,369	15,267	15,315	14,888	14,469	35
PERCENTAGE OF POWELL ACTIVE STORAGE <sup>3</sup>	59.3%	57.5%	56.7%	56.3%	56.8%	59.2%	65.2%	64.1%	63.2%	62.8%	63.0%	61.2%	59.5%	
LAKE MEAD	11,162	11,493	11,780	11,550	11,313	10,987	10,556	10,357	10,352	10,092	9,971	9,936	10,301	-861
LAKE MOHAVE	1,582	1,736	1,680	1,676	1,697	1,680	1,726	1,714	1,670	1,575	1,437	1,567	1,650	68
LAKE HAVASU	568	597	548	564	592	596	592	592	584	560	602	572	582	14
STORAGE IN LOWER BASIN <sup>4</sup>	13,312	13,826	14,008	13,790	13,602	13,263	12,874	12,664	12,606	12,227	12,010	12,075	12,533	-779
PERCENTAGE OF CO RIVER ACTIVE STORAGE IN THE LOWER BASIN <sup>5</sup>	47.0%	48.8%	49.5%	48.7%	48.1%	46.9%	45.5%	44.7%	44.5%	43.2%	42.4%	42.7%	44.3%	
LOWER BASIN STORAGE PLUS LAKE POWELL <sup>6</sup>	27,746	27,817	27,788	27,491	27,418	27,668	28,738	28,260	27,975	27,494	27,325	26,963	27,002	-744
PERCENTAGE OF ACTIVE STORAGE, LOWER BASIN PLUS POWELL <sup>7</sup>	52.7%	52.9%	52.8%	52.2%	52.1%	52.6%	54.6%	53.7%	53.2%	52.2%	51.9%	51.2%	51.3%	
TOTAL SYSTEM STORAGE <sup>8</sup>	33,143	33,092	32,977	32,714	32,865	33,218	34,694	34,147	33,743	33,072	32,779	32,365	32,370	-773
PERCENTAGE OF TOTAL SYSTEM STORAGE <sup>9</sup>	55.8%	55.7%	55.5%	55.1%	55.3%	55.9%	58.4%	57.5%	56.8%	55.7%	55.2%	54.5%	54.5%	

Note: For purposes of this tabulation, the term "active storage" is equivalent to live storage less the Exclusive Flood Control Space, and refers to the volume of water that can be delivered downstream via gravity flow.

**Footnotes:**

1. Actual values may differ slightly from the displayed values due to rounding and being displayed to the nearest thousand acre-feet.
2. "CHANGE" is the difference in the end-of-month storage between mid-night December 31 of the previous year and mid-night December 31 for the reporting year. A positive value represents an increase in the amount of water in storage, and a negative value indicates a decrease in the amount of water in storage.
3. Percentage of total active storage capacity available in Lake Powell. Based on total active storage capacity of 24,322,000 af.
4. The sum of end-of-month storage in Lakes Mead, Mohave, and Havasu.
5. The percentage of available active storage capacity held in the Lower Basin (Lakes Mead, Mohave and Havasu). Based on active storage capacity of 28,306,000 af.
6. The sum of end-of-month storage in Lake Powell (Upper Basin) and Lakes Mead, Mohave and Havasu (Lower Basin).
7. The percentage of available total active storage capacity held in Lake Powell (Upper Basin) and Lakes Mead, Mohave, and Havasu (Lower Basin). Based on total active storage capacity of 52,628,000 af.
8. Total end-of-month system storage, includes Reclamation reservoirs in the Upper and Lower Basins of the Colorado River system.
9. The percentage of total end-of-month system storage. This includes the Upper Basin Lakes Powell, Navajo, Crystal, Morrow Point, Blue Mesa, Flaming Gorge, Fontenelle, and Lower Basin Lakes Mead, Mohave, and Havasu. Based on total active system storage capacity of 59,383,000 af.



**COMPILATION OF RECORDS IN ACCORDANCE WITH ARTICLE V  
OF THE CONSOLIDATED DECREE OF THE UNITED STATES  
SUPREME COURT IN *ARIZONA V. CALIFORNIA*, 547 U.S. 150 (2006)**

In accordance with Article V of the Consolidated Decree of the United States Supreme Court in *Arizona v. California*, “The United States shall prepare and maintain, or provide for the preparation and maintenance of, and shall make available, annually and at such shorter intervals as the Secretary of the Interior shall deem necessary or advisable, for inspection by interested persons at all reasonable times and at a reasonable place or places, complete, detailed and accurate records of:

(A) Releases of water through regulatory structures controlled by the United States;

(B) Diversions of water from the mainstream, return flow of such water to the stream as is available for consumptive use in the United States or in satisfaction of the Mexican Treaty obligation, and consumptive use of such water. These quantities shall be stated separately as to each diverter from the mainstream, each point of diversion, and each of the States of Arizona, California and Nevada;

(C) Releases of mainstream water pursuant to orders therefor but not diverted by the party ordering the same, and the quantity of such water delivered to Mexico in satisfaction of the Mexican Treaty or diverted by others in satisfaction of rights decreed herein. These quantities shall be stated separately as to each diverter from the mainstream, each point of diversion, and each of the States of Arizona, California and Nevada;

(D) Deliveries to Mexico of water in satisfaction of the obligations of Part III of the Treaty of February 3, 1944, and, separately stated, water passing to Mexico in excess of treaty requirements;

(E) Diversions of water from the mainstream of the Gila and San Francisco Rivers and the consumptive use of such water, for the benefit of the Gila National Forest.”

**RECORDS OF RELEASES OF WATER THROUGH  
REGULATORY STRUCTURES IN ACCORDANCE WITH  
ARTICLE V (A) OF THE CONSOLIDATED DECREE OF THE UNITED STATES  
SUPREME COURT IN ARIZONA V. CALIFORNIA, 547 U.S. 150 (2006)**

The following tabulation, for calendar year 2010, shows the final records for release of water through regulatory structures controlled by the United States. Releases from Glen Canyon and Hoover Dams are measured and reported by Reclamation. The Davis, Parker, Palo Verde, Imperial, and Laguna Dams records of release are furnished by the USGS and are based upon measurements at or below the structures.

The record of river flow through Headgate Rock Dam was computed using the record of flow at the gaging station "Colorado River below Parker Dam, Arizona-California," and deducting from it the record of flow at the gaging station "Diversion for Colorado River Indian Reservation Main Canal near Parker, Arizona" measured at Headgate Rock Dam.

STRUCTURE	CALENDAR YEAR 2010												TOTAL	
	5/12/11	JAN	FEB	MAR	APR	MAY	JUN	JUL	AUG	SEP	OCT	NOV		DEC
GLEN CANYON DAM		900,478	630,501	602,349	601,915	601,342	600,984	802,463	801,694	480,189	495,480	809,825	846,584	8,173,804
HOOVER DAM		634,322	400,427	889,313	932,990	960,947	1,007,173	940,805	828,841	758,480	637,585	799,870	660,041	9,450,794
DAVIS DAM		501,100	465,000	919,600	951,500	1,017,000	991,400	971,700	896,700	891,600	824,300	696,800	600,600	9,727,300
PARKER DAM		234,000	325,200	669,500	688,200	685,200	674,400	753,500	645,000	579,400	475,300	433,900	287,600	6,451,200
HEADGATE ROCK DAM <sup>1</sup>		222,610	305,160	617,410	622,620	612,200	595,690	668,820	561,690	511,720	438,620	402,350	259,680	5,818,570
PALO VERDE DIVERSION DAM		240,300	278,500	566,700	569,600	540,500	489,300	579,600	465,600	449,300	374,500	354,000	261,200	5,169,100
IMPERIAL DAM <sup>2</sup>		35,450	20,950	34,300	30,180	39,560	34,030	24,370	35,060	34,020	66,460	31,300	34,290	419,970
DIVERSION TO MITTRY LAKE FROM GILA MAIN CANAL		459	448	634	602	625	615	616	570	602	575	426	388	6,560
SUM IMPERIAL DAM + DIVERSION TO MITTRY LAKE		35,909	21,398	34,934	30,782	40,185	34,645	24,986	35,630	34,622	67,035	31,726	34,678	426,530
LAGUNA DAM		43,880	24,250	42,200	31,780	39,210	37,780	26,310	36,740	37,920	58,590	31,400	34,710	444,770

Note: All data is supplied by the USGS with the exception of the releases from Glen Canyon Dam and Hoover Dam, which are provided by Reclamation.

**Footnotes:**

1. Computed as Parker Dam release minus diversion at Headgate Rock Dam.

2. Represents flow below Imperial Dam alone and does not include diversions through the All-American Canal and the Gila Gravity Main Canal.

## **RECORDS OF DIVERSIONS, RETURN FLOWS AND CONSUMPTIVE USE IN ACCORDANCE WITH ARTICLE V (B) OF THE CONSOLIDATED DECREE OF THE UNITED STATES SUPREME COURT IN *ARIZONA V. CALIFORNIA*, 547 U.S. 150 (2006)**

The following tabulations for calendar year 2010 show final records of diversions of water from the mainstream of the Colorado River, return flow of such water to the mainstream, and the consumptive use of such water in each state. The records were furnished by the U.S. Geological Survey (USGS), International Boundary and Water Commission, Bureau of Indian Affairs, Reclamation, National Park Service, U.S. Fish and Wildlife Service, and water user agencies. Diversions from the Topock Marsh Inlet Canal, All-American Canal and Gila Gravity Main Canal at Imperial Dam, were assigned to each user by adding each user's proportional share of the total canal losses to the delivery taken by each user at its turnout from the canal.

The tabulations show quantities of water drawn by surface diversion from the mainstream of the Colorado River, pumped directly from the mainstream, or pumped from wells in the Colorado River aquifer. Diversions are listed in two separate tabulations for each state. The first tabulation lists water users whose diversions are typically measured and reported monthly or more frequently. Measured return flows to the mainstream, an estimate of unmeasured return flows to the mainstream, and consumptive use are listed for points of diversion and return when that information is available.

The second tabulation for Arizona and California, entitled "Supplemental Use Tabulation," shows quantities of water pumped from the mainstream or from wells in the Colorado River aquifer, where the amount of water diverted is reported by the USGS or the water user. The USGS field verifies the crops being grown and uses evapotranspiration methodologies to estimate the crop use, then applies irrigation efficiency

coefficients to derive the diversions. Unmeasured returns are computed by multiplying a user's diversion by an unmeasured return flow factor. Reclamation is continuing to refine estimates of unmeasured returns.

No person or entity is entitled to divert or use Colorado River water without an entitlement. An entitlement is an authorization to beneficially use Colorado River water pursuant to: (1) a right decreed by the Supreme Court, (2) a contract with the United States through the Secretary of the Interior (Secretary), or (3) a Secretarial reservation of water. The diversions, return flows or consumptive uses tabulated in this report constitute the records required by Article V of the Consolidated Decree of the United States Supreme Court in *Arizona v. California*, 547 U.S. 150 (2006). The listing of a use in this report should not be interpreted as an entitlement or an indication that the use is authorized. If you notice an error or omission, please report it to the contact person listed on the cover page.

Reclamation does not consider pumping of wells from the flood plain or the underlying aquifer downstream from the Northerly International Boundary (NIB) to be a diversion of Colorado River water. This policy is based on the following: the ground water can reasonably be assumed to be flowing towards Mexico and therefore, not to be flowing toward the Colorado River upstream of Mexico's point of diversion near NIB. As such, this water does not return to the river to be made "available for consumptive use in the United States or in satisfaction of the Mexican Treaty obligation." In accordance with this position, Reclamation has discontinued reporting these wells.

DIVERSIONS FROM MAINSTREAM-AVAILABLE RETURN FLOW  
AND CONSUMPTIVE USE OF SUCH WATER  
CALENDAR YEAR 2010  
STATE OF ARIZONA

WATER USER	Ftnts	5/12/11												TOTAL <sup>1</sup>
		(ACRE-FEET)												
		JAN	FEB	MAR	APR	MAY	JUN	JUL	AUG	SEP	OCT	NOV	DEC	
LAKE MEAD NATIONAL RECREATION AREA														
DIVERSIONS FROM LAKE MEAD (TEMPLE BAR)		3	1	3	4	7	12	14	16	15	2	11	7	95
		0	0	0	0	0	0	0	0	0	0	0	0	0
		0	0	0	0	0	0	0	0	0	0	0	0	0
		3	1	3	4	7	12	14	16	15	2	11	7	95
LAKE MEAD NATIONAL RECREATION AREA														
DIVERSIONS FROM LAKE MOHAVE (KATHERINE, WILLOW BEACH)		11	8	9	9	14	15	18	18	18	14	15	13	162
		0	0	0	0	0	0	0	0	0	0	0	0	0
		0	0	0	0	0	0	0	0	0	0	0	0	0
		11	8	9	9	14	15	18	18	18	14	15	13	162
LOWER COLORADO RIVER DAMS PROJECT														
DIVERSION AT DAVIS DAM		2	2	2	1	6	3	25	18	2	3	2	2	68
		2	1	2	1	6	3	25	18	2	2	2	2	66
		0	0	0	0	0	0	0	0	0	0	0	0	0
		0	1	0	0	0	0	0	0	0	1	0	0	2
BULLHEAD CITY														
PUMPED FROM WELLS		648	568	702	722	824	1,051	1,043	1,064	958	857	723	663	9,823
MOHAVE COUNTY PARKS DIVERSION AT DAVIS DAM		4	0	7	8	14	10	14	14	9	4	3	1	88
		0	0	0	0	0	0	0	0	0	0	0	0	0
		215	187	234	241	277	350	349	356	319	284	240	219	3,271
		437	381	475	489	561	711	708	722	648	577	486	445	6,640
MOHAVE WATER CONSERVATION DISTRICT														
PUMPED FROM WELLS		56	54	60	72	70	89	94	85	80	77	64	62	863
		0	0	0	0	0	0	0	0	0	0	0	0	0
		18	18	20	24	23	29	31	28	26	25	21	20	283
		38	36	40	48	47	60	63	57	54	52	43	42	580
BROOKE WATER LLC														
PUMPED FROM RIVER		27	24	24	32	28	34	40	43	40	37	32	30	391
		0	0	0	0	0	0	0	0	0	0	0	0	0
		9	8	8	11	9	11	13	14	13	12	11	10	129
		18	16	16	21	19	23	27	29	27	25	21	20	262
MOHAVE VALLEY I.D.D.														
PUMPED FROM WELLS		523	636	1,792	2,451	2,751	3,256	3,451	3,671	2,396	2,006	1,709	1,358	26,000
		0	0	0	0	0	0	0	0	0	0	0	0	0
		241	293	824	1,127	1,265	1,498	1,587	1,689	1,102	923	786	625	11,960
		282	343	968	1,324	1,486	1,758	1,864	1,982	1,294	1,083	923	733	14,040
FORT MOHAVE INDIAN RESERVATION														
AGRICULTURAL - RIVER PUMPS		1,093	2,164	3,388	4,510	5,245	10,177	12,566	10,039	4,254	1,398	2,416	1,968	59,218
DOMESTIC - WELLS	2	83	92	176	173	177	174	294	235	268	261	137	208	2,278
		0	0	0	0	0	0	0	0	0	0	0	0	0
		541	1,038	1,639	2,154	2,494	4,761	5,916	4,726	2,080	763	1,174	1,001	28,287
		635	1,218	1,925	2,529	2,928	5,590	6,944	5,548	2,442	896	1,379	1,175	33,209
GOLDEN SHORES WATER CONSERVATION DISTRICT														
PUMPED FROM WELLS	3	19	24	33	36	44	53	58	55	44	37	26	25	454
		0	0	0	0	0	0	0	0	0	0	0	0	0
		6	8	11	12	15	17	19	18	15	12	9	8	150
		13	16	22	24	29	36	39	37	29	25	17	17	304
HAVASU NATIONAL WILDLIFE REFUGE														
TOPOCK INLET CANAL	4	125	434	3,711	4,880	4,603	4,667	4,434	3,169	3,387	2,590	343	90	32,433
FARM DITCH		0	64	713	779	818	797	726	561	458	183	37	0	5,136
WELL	3	10	11	15	17	20	25	27	26	20	17	12	12	212
		0	0	0	0	0	0	0	0	0	0	0	0	0
		119	448	3,906	4,995	4,788	4,830	4,565	3,305	3,401	2,455	345	90	33,247
		16	61	533	681	653	659	622	451	464	335	47	12	4,534
LAKE HAVASU CITY														
WELLS		879	800	898	1,008	1,173	1,291	1,409	1,458	1,301	1,107	920	781	13,025
		0	0	0	0	0	0	0	0	0	0	0	0	0
		334	304	341	383	446	491	535	554	494	421	350	297	4,950
		545	496	557	625	727	800	874	904	807	686	570	484	8,075

DIVERSIONS FROM MAINSTREAM-AVAILABLE RETURN FLOW  
AND CONSUMPTIVE USE OF SUCH WATER  
CALENDAR YEAR 2010  
STATE OF ARIZONA

		(ACRE-FEET)												
		5/12/11												
WATER USER	Ftnts	JAN	FEB	MAR	APR	MAY	JUN	JUL	AUG	SEP	OCT	NOV	DEC	TOTAL <sup>1</sup>
CENTRAL ARIZONA PROJECT														
PUMPED FROM LAKE HAVASU														
	DIVERSION	126,294	90,880	128,306	153,154	171,813	170,755	49,808	84,097	170,650	165,628	158,819	182,563	1,652,767
	MEASURED RETURNS	0	0	0	0	0	0	0	0	0	0	0	0	0
	UNMEASURED RETURNS	0	0	0	0	0	0	0	0	0	0	0	0	0
	CONSUMPTIVE USE	126,294	90,880	128,306	153,154	171,813	170,755	49,808	84,097	170,650	165,628	158,819	182,563	1,652,767
TOWN OF PARKER														
PUMPED FROM RIVER														
	DIVERSION	0	0	0	0	0	0	0	0	0	0	0	0	0
5	DIVERSION	47	43	57	65	80	89	97	91	83	68	53	50	823
	MEASURED RETURNS	23	24	25	23	24	25	28	25	25	24	24	24	294
	UNMEASURED RETURNS	13	12	16	19	23	25	28	26	24	19	15	14	234
	CONSUMPTIVE USE	11	7	16	23	33	39	41	40	34	25	14	12	295
COLORADO RIVER INDIAN RESERVATION														
DIVERSION AT HEADGATE ROCK DAM														
2 RIVER PUMPS AND DOMESTIC														
6	DIVERSION	11,390	20,040	52,090	65,580	73,000	78,710	84,680	83,310	67,680	36,680	31,550	27,920	632,630
	DIVERSION	493	580	785	853	1,045	1,251	1,368	1,309	1,054	879	638	619	10,874
	MEASURED RETURNS	11,994	13,649	19,222	23,167	21,533	18,322	19,177	20,641	22,104	19,448	19,577	20,426	229,260
	UNMEASURED RETURNS	654	1,134	2,908	3,654	4,072	4,398	4,733	4,654	3,780	2,066	1,770	1,570	35,393
	CONSUMPTIVE USE	-765	5,837	30,745	39,612	48,440	57,241	62,138	59,324	42,850	16,045	10,841	6,543	378,851
EHRENBURG IMPROVEMENT ASSOCIATION														
PUMP FROM RIVER														
	DIVERSION	28	26	31	34	39	47	51	48	43	38	34	28	447
	MEASURED RETURNS	3	2	3	3	2	4	5	3	2	2	2	1	32
	UNMEASURED RETURNS	8	7	9	10	11	13	15	14	12	11	10	8	128
	CONSUMPTIVE USE	17	17	19	21	26	30	31	31	29	25	22	19	287
CIBOLA VALLEY														
CIBOLA VALLEY I.D.D.														
	DIVERSION	151	463	652	1,031	1,082	1,329	1,605	1,350	1,279	723	547	397	10,609
MOHAVE COUNTY WATER AUTHORITY														
	DIVERSION	168	201	251	434	514	602	638	680	474	127	61	128	4,278
HOPI TRIBE														
	DIVERSION	0	0	88	223	547	858	996	1,056	632	382	96	20	4,898
ARIZONA RECREATIONAL FACILITIES														
	DIVERSION	81	226	76	72	299	399	432	428	378	131	85	74	2,681
ARIZONA GAME AND FISH COMMISSION														
	DIVERSION	135	161	202	350	414	484	513	548	381	102	49	103	3,442
	MEASURED RETURNS	0	0	0	0	0	0	0	0	0	0	0	0	0
	UNMEASURED RETURNS	152	300	362	601	814	1,047	1,192	1,158	896	418	239	206	7,385
	CONSUMPTIVE USE	383	751	907	1,509	2,042	2,625	2,992	2,904	2,248	1,047	599	516	18,523
CIBOLA NATIONAL WILDLIFE REFUGE														
3 RIVER PUMPS														
	DIVERSION	625	564	625	1,875	1,937	1,875	2,185	2,115	2,185	1,310	1,268	1,311	17,875
	MEASURED RETURNS	0	0	0	0	0	0	0	0	0	0	0	0	0
	UNMEASURED RETURNS	238	214	238	713	736	713	830	804	830	498	482	498	6,794
	CONSUMPTIVE USE	387	350	387	1,162	1,201	1,162	1,355	1,311	1,355	812	786	813	11,081
IMPERIAL NATIONAL WILDLIFE REFUGE														
4 RIVER PUMPS														
	DIVERSION	197	178	197	152	156	152	353	342	353	184	178	184	2,626
	MEASURED RETURNS	0	0	0	0	0	0	0	0	0	0	0	0	0
	UNMEASURED RETURNS	75	68	75	58	59	58	134	130	134	70	68	70	999
	CONSUMPTIVE USE	122	110	122	94	97	94	219	212	219	114	110	114	1,627
YUMA PROVING GROUND														
DIVERSION AT IMPERIAL DAM														
	DIVERSION	0	1	1	1	0	0	0	0	0	0	0	0	3
WELLS														
	DIVERSION	30	25	24	44	108	133	91	92	94	51	55	35	782
	MEASURED RETURNS	0	0	0	0	0	0	0	0	0	0	0	0	0
	UNMEASURED RETURNS	0	0	0	0	0	0	0	0	0	0	0	0	0
	CONSUMPTIVE USE	30	26	25	45	108	133	91	92	94	51	55	35	785
GILA MONSTER FARMS														
DIVERSION AT IMPERIAL DAM														
7	DIVERSION	141	286	633	1,034	1,053	941	664	502	674	784	530	215	7,457
	MEASURED RETURNS	9	10	45	69	68	59	39	30	33	28	37	14	441
	UNMEASURED RETURNS	54	109	241	393	400	358	252	191	256	298	201	82	2,835
	CONSUMPTIVE USE	78	167	347	572	585	524	373	281	385	458	292	119	4,181
WELLTON-MOHAWK I.D.D.														
DIVERSION AT IMPERIAL DAM														
	DIVERSION	11,449	14,182	35,599	43,289	40,452	40,918	45,172	41,194	38,626	29,450	21,847	16,826	379,004
	GGMC RETURN	747	522	2,673	3,032	2,739	2,680	2,793	2,552	1,987	1,109	1,574	1,158	23,566
	DOME RETURN	1,018	679	215	0	700	554	555	518	343	467	584	769	6,402
8	MOD RETURN	9,780	9,040	9,990	9,370	9,940	9,590	7,240	6,000	9,700	9,980	10,440	9,730	110,800
	RETURNS, TOTAL	11,545	10,241	12,878	12,402	13,379	12,824	10,588	9,070	12,030	11,556	12,598	11,657	140,768
	UNMEASURED RETURNS	0	0	0	0	0	0	0	0	0	0	0	0	0
	CONSUMPTIVE USE	-96	3,941	22,721	30,887	27,073	28,094	34,584	32,124	26,596	17,894	9,249	5,169	238,236

DIVERSIONS FROM MAINSTREAM-AVAILABLE RETURN FLOW  
AND CONSUMPTIVE USE OF SUCH WATER  
CALENDAR YEAR 2010  
STATE OF ARIZONA

WATER USER	Ftnts	5/12/11												TOTAL <sup>1</sup>
		(ACRE-FEET)												
		JAN	FEB	MAR	APR	MAY	JUN	JUL	AUG	SEP	OCT	NOV	DEC	
<b>CITY OF YUMA</b>														
DIVERSION AT IMPERIAL DAM (AAC)	DIVERSION	1,147	981	1,279	1,327	1,666	1,803	2,018	1,921	1,854	1,582	1,453	1,216	18,247
DIVERSION AT IMPERIAL DAM (GILA)	DIVERSION	506	408	492	277	455	454	457	652	656	654	600	967	6,578
PUMP DIVERSION FOR YUMA EAST WETLANDS	DIVERSION	6	5	11	15	22	25	30	27	20	12	8	4	185
	MEASURED RETURNS	856	755	837	970	1,284	1,180	1,391	917	894	858	856	818	11,616
	UNMEASURED RETURNS	2	2	4	5	8	9	11	9	7	4	3	1	65
	CONSUMPTIVE USE	801	637	941	644	851	1,093	1,103	1,674	1,629	1,386	1,202	1,368	13,329
<b>MARINE CORPS AIR STATION (YUMA)</b>														
DIVERSION AT IMPERIAL DAM	DIVERSION	66	58	69	114	135	146	162	150	141	102	97	81	1,321
	MEASURED RETURNS	0	0	0	0	0	0	0	0	0	0	0	0	0
	UNMEASURED RETURNS	0	0	0	0	0	0	0	0	0	0	0	0	0
	CONSUMPTIVE USE	66	58	69	114	135	146	162	150	141	102	97	81	1,321
<b>UNION PACIFIC RAILROAD (SOUTHERN PACIFIC COMPANY)</b>														
DIVERSION AT IMPERIAL DAM	DIVERSION	4	4	4	0	4	4	0	4	4	4	4	4	40
	MEASURED RETURNS	0	0	0	0	0	0	0	0	0	0	0	0	0
	UNMEASURED RETURNS	2	2	2	0	2	2	0	2	2	2	2	2	20
	CONSUMPTIVE USE	2	2	2	0	2	2	0	2	2	2	2	2	20
<b>YUMA MESA FRUIT GROWERS ASSOCIATION</b>														
DIVERSION AT IMPERIAL DAM	DIVERSION	0	0	0	0	0	0	0	0	0	0	0	0	0
	MEASURED RETURNS	0	0	0	0	0	0	0	0	0	0	0	0	0
	UNMEASURED RETURNS	0	0	0	0	0	0	0	0	0	0	0	0	0
	CONSUMPTIVE USE	0	0	0	0	0	0	0	0	0	0	0	0	0
<b>UNIVERSITY OF ARIZONA</b>														
DIVERSION AT IMPERIAL DAM	DIVERSION	36	35	43	43	86	92	77	105	83	63	60	29	752
	MEASURED RETURNS	0	0	0	0	0	0	0	0	0	0	0	0	0
	UNMEASURED RETURNS	0	0	0	0	0	0	0	0	0	0	0	0	0
	CONSUMPTIVE USE	36	35	43	43	86	92	77	105	83	63	60	29	752
<b>YUMA UNION HIGH SCHOOL DISTRICT</b>														
DIVERSION AT IMPERIAL DAM	DIVERSION	9	10	9	10	22	24	21	29	25	0	40	21	220
	MEASURED RETURNS	0	0	0	0	0	0	0	0	0	0	0	0	0
	UNMEASURED RETURNS	2	3	2	3	6	6	5	7	6	0	10	5	55
	CONSUMPTIVE USE	7	7	7	7	16	18	16	22	19	0	30	16	165
<b>YUMA MESA GRAPEFRUIT COMPANY (CAMILLE ALLEC JR.)</b>														
DIVERSION AT IMPERIAL DAM	DIVERSION	0	0	0	0	0	0	0	0	0	0	0	0	0
	MEASURED RETURNS	0	0	0	0	0	0	0	0	0	0	0	0	0
	UNMEASURED RETURNS	0	0	0	0	0	0	0	0	0	0	0	0	0
	CONSUMPTIVE USE	0	0	0	0	0	0	0	0	0	0	0	0	0
<b>DESERT LAWN MEMORIAL</b>														
DIVERSION AT IMPERIAL DAM	DIVERSION	0	6	0	12	0	27	0	36	0	35	0	11	127
	MEASURED RETURNS	0	0	0	0	0	0	0	0	0	0	0	0	0
	UNMEASURED RETURNS	0	2	0	4	0	8	0	11	0	11	0	3	39
	CONSUMPTIVE USE	0	4	0	8	0	19	0	25	0	24	0	8	88
<b>NORTH GILA VALLEY I.D.D.</b>														
DIVERSION AT IMPERIAL DAM	DIVERSION	1,565	1,842	3,417	4,175	5,234	4,917	5,158	2,829	3,430	4,245	3,989	3,067	43,868
	MEASURED RETURNS	1,501	1,490	2,174	2,419	2,863	2,631	2,800	1,707	2,108	2,876	2,989	2,556	28,114
	UNMEASURED RETURNS	214	252	468	572	717	674	707	388	470	582	546	420	6,010
	CONSUMPTIVE USE	-150	100	775	1,184	1,654	1,612	1,651	734	852	787	454	91	9,744
<b>YUMA IRRIGATION DISTRICT</b>														
DIVERSION AT IMPERIAL DAM	DIVERSION	1,787	3,118	6,653	7,666	7,777	6,016	6,083	6,449	5,776	5,274	4,741	3,149	64,489
PUMPED FROM PRIVATE WELLS	DIVERSION	39	15	95	38	88	60	60	32	62	105	88	57	739
	MEASURED RETURNS	566	744	1,813	2,106	2,064	1,586	1,579	1,855	1,496	1,352	1,415	957	17,533
	UNMEASURED RETURNS	389	667	1,437	1,641	1,675	1,294	1,308	1,380	1,243	1,146	1,029	683	13,892
	CONSUMPTIVE USE	871	1,722	3,498	3,957	4,126	3,196	3,256	3,246	3,099	2,881	2,385	1,566	33,803
<b>YUMA MESA I. D. D.</b>														
DIVERSION AT IMPERIAL DAM	DIVERSION	5,445	7,272	12,899	14,940	17,920	23,493	25,250	24,304	21,231	14,351	11,171	9,496	187,772
	MEASURED RETURNS	4,385	7,673	8,733	6,998	8,902	10,183	9,002	8,366	5,744	1,010	1,083	1,279	73,358
	UNMEASURED RETURNS	871	1,164	2,064	2,390	2,867	3,759	4,040	3,889	3,397	2,296	1,787	1,519	30,043
	CONSUMPTIVE USE	189	-1,565	2,102	5,552	6,151	9,551	12,208	12,049	12,090	11,045	8,301	6,698	84,371

DIVERSIONS FROM MAINSTREAM-AVAILABLE RETURN FLOW  
AND CONSUMPTIVE USE OF SUCH WATER  
CALENDAR YEAR 2010  
STATE OF ARIZONA

WATER USER	Ftns	5/12/11												TOTAL <sup>1</sup>
		(ACRE-FEET)												
		JAN	FEB	MAR	APR	MAY	JUN	JUL	AUG	SEP	OCT	NOV	DEC	
<b>UNIT "B" IRRIGATION DISTRICT</b>														
DIVERSION AT IMPERIAL DAM														
	DIVERSION	742	924	1,647	2,258	2,539	3,303	3,359	3,360	3,082	2,098	1,714	1,307	26,333
	MEASURED RETURNS	755	1,336	1,478	1,199	1,514	1,723	1,497	1,399	968	156	166	192	12,383
	UNMEASURED RETURNS	0	0	0	0	0	0	0	0	0	0	0	0	0
	CONSUMPTIVE USE	-13	-412	169	1,059	1,025	1,580	1,862	1,961	2,114	1,942	1,548	1,115	13,950
<b>FORT YUMA INDIAN RESERVATION</b>														
DIVERSIONS FOR YUMA EAST WETLANDS														
	DIVERSION	15	13	28	41	60	69	80	72	52	30	21	12	493
RANCH "5" LANDS, YUMA ISLAND, AZ (180 ac)														
	DIVERSION	0	0	0	0	0	0	0	0	0	0	0	0	0
DOMESTIC														
	DIVERSION	3	2	2	3	3	3	4	2	2	2	2	2	30
	MEASURED RETURNS	0	0	0	0	0	0	0	0	0	0	0	0	0
	UNMEASURED RETURNS	6	5	11	15	22	25	29	26	19	11	8	5	182
	CONSUMPTIVE USE	12	10	19	29	41	47	55	48	35	21	15	9	341
<b>YUMA COUNTY WATER USERS' ASSOCIATION</b>														
DIVERSION AT IMPERIAL DAM														
	DIVERSION	12,334	17,470	26,987	38,672	37,747	26,686	40,586	24,295	27,949	37,468	29,492	17,402	337,088
PUMPED FROM WELLS														
	DIVERSION	144	79	100	114	152	41	30	74	11	81	124	106	1,056
	MEASURED RETURNS	7,825	5,957	5,750	6,308	8,416	6,935	7,850	6,443	9,125	14,355	13,904	10,901	103,769
	UNMEASURED RETURNS	262	369	569	815	796	561	853	512	587	789	622	368	7,103
	CONSUMPTIVE USE	4,391	11,223	20,768	31,663	28,687	19,231	31,913	17,414	18,248	22,405	15,090	6,239	227,272
<b>COCOPA INDIAN RESERVATION</b>														
DIVERSION AT IMPERIAL DAM														
	DIVERSION	0	0	0	0	0	0	0	0	15	0	425	340	780
PUMPED FROM WELLS	12													
	DIVERSION	212	265	362	390	477	579	632	608	478	400	286	282	4,971
	MEASURED RETURNS	1	1	1	2	2	3	1	1	5	4	12	5	38
	UNMEASURED RETURNS	72	90	123	133	162	197	215	207	168	136	242	211	1,956
	CONSUMPTIVE USE	139	174	238	255	313	379	416	400	320	260	457	406	3,757
<b>YUMA AREA OFFICE, USBR</b>														
WELL														
	DIVERSION	0	9	26	28	54	55	60	60	60	59	59	62	532
	MEASURED RETURNS	0	0	0	0	0	0	0	0	0	0	0	0	0
	UNMEASURED RETURNS	0	0	0	0	0	0	0	0	0	0	0	0	0
	CONSUMPTIVE USE	0	9	26	28	54	55	60	60	60	59	59	62	532
<b>PUMPED FROM SOUTH GILA WELLS (DPOC'S)</b>														
	MEASURED RETURNS	0	3,908	3,248	3,613	5,247	5,398	5,182	5,684	1,997	0	0	1,209	35,486
	UNMEASURED RETURNS	0	-3,908	-3,248	-3,613	-5,247	-5,398	-5,182	-5,684	-1,997	0	0	-1,209	-35,486
	RETURN CREDITS	0	0	0	0	0	0	0	0	0	0	0	0	0
<b>OTHER USERS PUMPING FROM COLORADO RIVER AND WELLS IN FLOOD PLAIN DAVIS DAM TO INTERNATIONAL BOUNDARY</b>														
	DIVERSION	996	1,032	1,852	2,359	2,662	3,071	3,153	2,958	2,313	2,024	1,545	1,438	25,403
	MEASURED RETURNS	0	0	0	0	0	0	0	0	0	0	0	0	0
	UNMEASURED RETURNS	359	368	652	833	941	1,089	1,119	1,049	822	721	550	514	9,017
	CONSUMPTIVE USE	637	664	1,200	1,526	1,721	1,982	2,034	1,909	1,491	1,303	995	924	16,386
<b>ARIZONA TOTALS</b>														
	DIVERSION	179,768	166,286	287,125	355,375	385,436	391,065	300,086	305,601	365,080	313,719	278,179	274,746	3,602,466
	MEASURED RETURNS	39,465	41,883	52,961	55,667	60,057	55,478	53,982	50,475	54,536	51,671	52,665	48,832	617,672
	UNMEASURED RETURNS	4,856	7,072	16,164	20,806	22,628	26,223	28,486	25,147	20,103	13,973	10,520	8,449	204,427
	CONSUMPTIVE USE	135,447	117,331	218,000	278,902	302,751	309,364	217,618	229,979	290,441	248,075	214,994	217,465	2,780,367

**NOTE:** The term 'CONSUMPTIVE USE' in this tabulation means diversions including underground pumping, less measured return flow and less current estimated unmeasured return flow to the river.

**Footnotes:**

1. Totals may differ from the sum of the monthly values due to rounding to the nearest acre-foot.
2. Diversion amounts include deliveries to the Fort Mojave Tribe by the City of Needles CA.
3. Reported as an annual total only, distributed monthly according to the monthly use patterns of nearby users.
4. Havasu NWR diversion amounts have been adjusted downward for diversions out of the Topock Marsh inlet canal by Mohave Valley Irrigation and Drainage District and Fort Mojave Indian Reservation.
5. The Town of Parker diversion amounts have been adjusted downward for potable water delivered to the Colorado River Indian Tribes by the Town of Parker.
6. Sum of diversions by two river pumps, water delivered by the Town of Parker and an estimate of municipal diversion. Municipal diversions are estimated by multiplying CRIT's measured effluent by the Town of Parker's diversion to effluent ratio. CRIT portion of wastewater returns from Joint Venture Treatment Plant are combined with agricultural drainage measured at Scott Road gage.
7. Use for lands leased from ASLD by Gila Monster Farms has been deducted.
8. Main Outlet Drain return flow credit is measured flow at Station 0+00. For those comparing this return value to the "Water Bypassed Pursuant to Minute 242 of the IBWC", differences can result from a combination of DPOC and Yuma Mesa Conduit discharge into the MODE, MODE water that has been desalinated, and MODE water discharge to the river during the Yuma Desalting Plant Pilot Run. During periods of sustained flow in the Gila River this measurement includes both Colorado River and Gila River water. At such times Reclamation will determine how best to differentiate return flows from the two sources.

DIVERSIONS FROM MAINSTREAM-AVAILABLE RETURN FLOW  
AND CONSUMPTIVE USE OF SUCH WATER  
CALENDAR YEAR 2010  
STATE OF ARIZONA

5/12/11

(ACRE-FEET)

WATER USER	Ftnts	JAN	FEB	MAR	APR	MAY	JUN	JUL	AUG	SEP	OCT	NOV	DEC	TOTAL <sup>1</sup>
9. Summation for the Yuma Mesa Division, consisting of the North Gila Valley Irrigation and Drainage District, the Yuma Irrigation District, and the Yuma Mesa Irrigation and Drainage District is as follows:														
	<u>Item</u>													<u>Annual Totals</u>
	Diversion at Imperial Dam <sup>A</sup>													296,129
	Pumped from wells													739
	Surface returns from South Gila Valley (South Gila Canal Terminal Wasteway)													3,179
	Return flow North Gila Valley (6 drains and wasteways)													9,853
	Total Yuma Mesa Division Unmeasured Returns													49,945
	Return flow Yuma Mesa Outlet Drain <sup>B</sup>													29,073
	Return flow protective and regulatory pumping unit <sup>C</sup>													28,773
	Estimated unmeasured groundwater return flow <sup>D</sup>													25,698
	Return flow share of Gila Main Canal loss <sup>E</sup>													22,427
	Subtotal return flow													168,949
	Consumptive Use (see note above)													127,919
<sup>A</sup> Total for the North Gila Valley Irrigation and Drainage District, Yuma Irrigation District, and Yuma Mesa Irrigation and Drainage District.														
<sup>B</sup> Estimated at 85 percent of the Yuma Mesa Outlet Drain with the balance credited to 'Unit B'.														
<sup>C</sup> Estimated at 85 percent of Protective and Regulatory Pumping Unit with the balance credited to 'Unit B'.														
<sup>D</sup> Estimated at 38% of the North Gila Valley I.D.D. diversion at Imperial Dam plus 14% of Yuma Irrigation District's diversion at Imperial Dam. This calculation is based on an analysis of the USGS Report 83-4220														
<sup>E</sup> Diversion times a mileage weighted share of Gila Main Canal loss, less canal surface evaporation (1397 af/yr), and phreatophytes (2154 af/yr).														

10. Diversion and return values include pumpage from AEW-6,7,8,10,11,41, some of which deliver water for irrigation; others are pumped to control groundwater elevation. These wells were previously reported in the Arizona Supplemental Tabulation.

11. Diversion values have been reduced for those users (Ogram Boys' Enterprises, G Ogram, and ASLD) who take deliveries outside District boundaries. Those diversions appear in the Arizona Supplemental section.

12. Diversion amounts include pumpage from AEW-15, 16 and the Cocopah Bend R.V. Park. These wells were previously reported in the Arizona Supplemental Section.

13. Until comprehensive modeling of the Yuma area to determine how unmeasured returns are affected by pumping of the DPOC wellfield is complete, this pumpage is added to Arizona's measured returns and subtracted from Arizona's unmeasured returns.

14. Details may be found in the Arizona Supplemental Tabulation pages.



ARIZONA SUPPLEMENTAL TABULATION  
CALENDAR YEAR 2010  
STATE OF ARIZONA

WATER USER	Ftnts	USGS #	1	5/12/11 (ACRE-FEET)												
				JAN	FEB	MAR	APR	MAY	JUN	JUL	AUG	SEP	OCT	NOV	DEC	TOTAL
Marble Canyon Company				1	1	1	1	2	2	2	2	2	1	1	1	17
SUBTOTAL, LEE FERRY TO DAVIS DAM	2			1	1	1	1	2	2	2	2	2	1	1	1	17
				0	0	0	0	0	0	0	0	0	0	0	0	0
				0	0	0	1	1	1	1	1	1	0	0	0	6
				1	1	1	0	1	1	1	1	1	1	1	1	11
Maurice McAlister (river Intake)				0	0	1	1	1	1	1	1	1	1	1	1	10
Crystal Beach Water Conservation District				7	7	8	9	10	10	11	10	9	8	8	7	104
Arizona-American Water Company				62	47	47	62	63	69	87	83	91	73	61	62	807
Arizona State Parks (Windsor Beach)				0	1	1	2	0	2	3	2	1	3	3	2	20
SUBTOTALS, DAVIS DAM TO PARKER DAM	2			69	55	57	74	74	82	102	96	102	85	73	72	941
				0	0	0	0	0	0	0	0	0	0	0	0	0
				24	18	19	25	26	30	37	35	35	30	25	25	329
				45	37	38	49	48	52	65	61	67	55	48	47	612
Hillcrest Water Company				1	1	2	2	2	3	4	3	3	3	3	3	30
Springs Del Sol	5			0	0	0	0	0	0	0	0	0	0	0	2	2
Jack Rayner Jr.		AEP-9		192	240	328	354	432	525	572	551	433	363	257	253	4,500
Arizona State Land Department (domestic)				2	2	2	3	4	4	4	4	4	2	2	2	35
Arizona State Land Department (agricultural)		ADP-6		0	0	128	185	290	371	421	375	156	71	48	26	2,071
TransCanada (North Baja Pipeline)				32	21	27	16	10	48	30	19	18	17	25	24	287
BLM Permittees (LHFO & YFO)				52	43	76	95	84	85	93	79	75	167	114	118	1,081
Fisher's Landing				3	2	2	2	2	3	3	3	2	2	1	1	26
Shepard Water Company				3	2	1	2	3	3	4	5	4	3	2	1	33
SUBTOTALS, PARKER DAM TO IMPERIAL DAM	2			285	311	566	659	827	1,042	1,131	1,039	695	628	452	430	8,065
				0	0	0	0	0	0	0	0	0	0	0	0	0
				100	109	199	232	288	365	394	363	242	220	159	151	2,822
				185	202	367	427	539	677	737	676	453	408	293	279	5,243
Bard Date Gardens (JRJ Partners LLC)		AEP-1, AEW-3		54	29	98	122	117	71	120	73	30	30	15	36	795
Cha Cha (Glen Curtis Citrus)	3	AEP-2/3, AEW-4/5, ADW-3		2	37	30	145	138	340	235	338	166	162	43	119	1,755
Russell Youmans (Beattie Farms Southwest)	3	ADW-2		47	59	81	87	107	129	141	136	107	90	64	62	1,110
BLM Permittees (YFO)				3	2	3	2	5	10	9	10	8	3	3	2	60
L. Pratt	3			11	14	19	20	24	30	32	31	24	21	15	14	255
George Ogram	3,4	AEW-9		33	1	84	86	83	77	47	25	0	63	6	19	525
Ogram Boys' Enterprises	3,4			65	42	104	171	196	112	113	89	36	23	41	12	1,005
John Peach	3	AEW-12		22	27	38	41	50	60	66	63	50	42	29	29	517
Arizona Public Service Company. (Yucca Power Plant)	3			60	54	23	16	63	66	73	79	94	98	89	80	795
Amigo Farms	3	AEW-14, ADP-1		20	25	34	36	44	54	59	57	45	37	26	26	463
Curry Family Limited	3	AEP-4, ADP-2		13	16	22	24	29	36	39	38	29	25	18	17	306
Pete Power	3	ADP-3/4		25	31	43	46	56	68	75	72	56	47	34	33	586
Gary Pasquinelli	4	ADP-5		10	7	35	15	30	30	15	20	190	20	29	14	415
Arizona State Land Department (agricultural)				276	321	614	814	817	862	893	789	679	649	607	472	7,793
SUBTOTALS, BELOW IMPERIAL DAM	2			641	665	1,228	1,625	1,759	1,945	1,918	1,821	1,514	1,310	1,019	935	16,380
				0	0	0	0	0	0	0	0	0	0	0	0	0
				235	241	434	575	626	693	687	650	544	471	366	338	5,860
				406	424	794	1,050	1,133	1,252	1,231	1,171	970	839	653	597	10,520
TOTAL ARIZONA SUPPLEMENTAL TABULATION	2			996	1,032	1,852	2,359	2,662	3,071	3,153	2,958	2,313	2,024	1,545	1,438	25,403
				0	0	0	0	0	0	0	0	0	0	0	0	0
				359	368	652	833	941	1,089	1,119	1,049	822	721	550	514	9,017
				637	664	1,200	1,526	1,721	1,982	2,034	1,909	1,491	1,303	995	924	16,386

**Foot notes:**

- References such as AEW/ADP/AEP are listed in the annual USGS report "2010 Arizona and California Pumped Diversions".
- Monthly and annual totals rounded and displayed to the nearest whole number.
- Calculated by the USGS using field crop verification and ET methodologies. See Significant Documents section of this report for further discussion.
- George Ogram, Ogram Boys' Enterprises, and some ALSD lands have water delivered (wheeled) to them by YID from the GGMC. A proportionate share of the loss associated with the GGMC has been assessed.
- Estimate based on 2009 report. Reclamation working with entitlement holder to provide their 2010 data.

DIVERSIONS FROM MAINSTREAM-AVAILABLE RETURN FLOW  
AND CONSUMPTIVE USE OF SUCH WATER  
CALENDAR YEAR 2010  
STATE OF CALIFORNIA

		5/12/11	(ACRE-FEET)											
WATER USER	Ftnts	JAN	FEB	MAR	APR	MAY	JUN	JUL	AUG	SEP	OCT	NOV	DEC	TOTAL <sup>1</sup>
FORT MOJAVE INDIAN RESERVATION														
DOMESTIC - WELLS	2	3	2	3	3	5	6	7	8	5	4	4	3	53
AGRICULTURAL - RIVER PUMPS	2	577	668	811	1,485	1,547	1,539	944	1,042	867	527	1,123	590	11,720
		0	0	0	0	0	0	0	0	0	0	0	0	0
		268	310	376	688	717	714	439	485	403	245	521	274	5,440
		312	360	438	800	835	831	512	565	469	286	606	319	6,333
CITY OF NEEDLES														
WELLS	3	104	103	130	184	262	265	300	262	203	206	190	134	2,343
		28	32	32	42	43	41	40	40	35	49	45	45	472
		10	12	12	15	15	15	14	14	13	18	16	16	170
		66	59	86	127	204	209	246	208	155	139	129	73	1,701
CHEMEHUEVI INDIAN RESERVATION														
PUMPED FROM RIVER AND WELLS		6	8	11	11	14	17	18	18	14	12	8	8	145
		0	0	0	0	0	0	0	0	0	0	0	0	0
		3	4	5	5	6	8	8	8	6	6	4	4	67
		3	4	6	6	8	9	10	10	8	6	4	4	78
METROPOLITAN WATER DISTRICT														
DIVERSION FROM LAKE HAVASU		87,372	54,322	77,532	31,152	89,995	78,850	95,038	96,124	86,344	90,091	86,104	77,159	950,083
WATER EXCHANGED WITH SDCWA	4	12,308	12,309	12,308	12,308	12,309	12,308	12,308	12,308	12,308	12,308	12,309	16,115	151,507
		222	212	222	209	209	205	211	209	204	215	208	203	2,529
		0	0	0	0	0	0	0	0	0	0	0	0	0
		99,458	66,419	89,618	43,251	102,095	90,953	107,135	108,224	98,448	102,184	98,205	93,071	1,099,061
PARKER DAM AND GOVERNMENT CAMP														
DIVERSION AT PARKER DAM	3	4	4	6	10	10	15	19	14	13	10	9	7	121
		0	0	0	0	0	0	0	0	0	0	0	0	0
		0	0	0	0	0	0	0	0	0	0	0	0	0
		4	4	6	10	10	15	19	14	13	10	9	7	121
COLORADO RIVER INDIAN RESERVATION														
RIVER PUMPS AND WELLS		243	303	414	447	547	664	724	697	548	459	326	321	5,693
BIG RIVER - WELLS		32	27	39	50	66	73	79	80	72	57	44	40	659
		0	0	0	0	0	0	0	0	0	0	0	0	0
		115	138	189	207	255	307	335	324	258	215	154	150	2,647
		160	192	264	290	358	430	468	453	362	301	216	211	3,705
CITY OF WINTERHAVEN														
1 WELL	5	9	8	9	8	8	10	10	9	8	8	9	8	104
		0	0	0	0	0	0	0	0	0	0	0	0	0
		3	3	3	3	3	3	3	3	3	3	3	3	36
		6	5	6	5	5	7	7	6	5	5	6	5	68
PALO VERDE IRRIGATION DISTRICT														
DIVERSION FROM PALO VERDE DAM		16,170	22,800	53,480	58,620	76,110	82,260	95,050	99,510	79,570	55,190	44,310	33,530	716,600
		26,092	26,240	29,921	30,230	34,427	34,285	35,898	41,552	40,960	40,847	34,426	31,723	406,601
		906	1,277	2,995	3,283	4,262	4,607	5,323	5,573	4,456	3,091	2,481	1,878	40,132
		-10,828	-4,717	20,564	25,107	37,421	43,368	53,829	52,385	34,154	11,252	7,403	-71	269,867
YUMA PROJECT RESERVATION DIVISION, INDIAN UNIT														
DIVERSION AT IMPERIAL DAM		1,400	1,896	4,101	5,555	4,945	1,502	4,165	3,192	4,795	4,411	3,008	1,791	40,761
DOMESTIC	6	34	42	58	63	76	93	101	97	77	64	45	45	795
		45	57	70	83	182	45	101	73	78	111	77	23	945
		239	324	695	938	839	266	712	549	814	747	510	307	6,940
		1,150	1,557	3,394	4,597	4,000	1,284	3,453	2,667	3,980	3,617	2,466	1,506	33,671
YUMA PROJECT RESERVATION DIVISION, BARD UNIT														
DIVERSION AT IMPERIAL DAM		1,410	1,388	3,229	4,957	5,043	3,939	4,417	3,350	1,016	4,797	3,652	2,353	39,551
		25	23	30	40	100	65	70	44	17	65	48	15	542
		235	232	539	828	842	658	738	559	170	801	610	393	6,605
		1,150	1,133	2,660	4,089	4,101	3,216	3,609	2,747	829	3,931	2,994	1,945	32,404
RETURNS FROM YUMA PROJECT														
RESERVATION DIVISION		2,680	2,074	2,513	2,760	2,312	1,667	2,014	2,034	2,040	2,272	2,459	2,104	26,929
SUM, YUMA PROJECTS, RESERVATION DIVISION USE	7	-380	616	3,541	5,926	5,789	2,833	5,048	3,380	2,769	5,276	3,001	1,347	39,146

DIVERSIONS FROM MAINSTREAM-AVAILABLE RETURN FLOW  
AND CONSUMPTIVE USE OF SUCH WATER  
CALENDAR YEAR 2010  
STATE OF CALIFORNIA

WATER USER	Ftnts	5/12/11												TOTAL <sup>1</sup>	
		(ACRE-FEET)													
		JAN	FEB	MAR	APR	MAY	JUN	JUL	AUG	SEP	OCT	NOV	DEC		
<b>IMPERIAL IRRIGATION DISTRICT</b>															
DIVERSION AT IMPERIAL DAM		DIVERSION	87,028	103,002	245,534	291,276	321,872	282,699	311,096	274,205	245,160	186,780	169,938	122,179	2,640,769
		MEASURED RETURNS	4,531	5,171	6,736	6,900	18,975	13,246	14,349	10,951	9,218	7,368	6,534	2,416	106,395
		UNMEASURED RETURNS	0	0	0	0	0	0	0	0	0	0	0	0	
		CONSUMPTIVE USE	82,497	97,831	238,798	284,376	302,897	269,453	296,747	263,254	235,942	179,412	163,404	119,763	2,534,374
DELIVERY FROM WARREN H. BROCK RESERVOIR	8	CONSUMPTIVE USE	0	0	0	0	0	0	0	0	0	0	8,287	2,932	11,219
		TOTAL CONSUMPTIVE USE	82,497	97,831	238,798	284,376	302,897	269,453	296,747	263,254	235,942	179,412	171,691	122,695	2,545,593
<b>WATER TRANSFERRED TO SDCWA FOR MITIGATION</b>															
	9	DIVERSION	363	0	0	1,379	0	0	0	3,362	28,391	25,422	23,512	1,033	83,462
		MEASURED RETURNS	19	0	0	33	0	0	0	134	1,067	1,003	904	20	3,180
		CONSUMPTIVE USE	344	0	0	1,346	0	0	0	3,228	27,324	24,419	22,608	1,013	80,282
<b>COACHELLA VALLEY WATER DISTRICT</b>															
DIVERSION AT IMPERIAL DAM		DIVERSION	12,169	13,691	22,204	28,571	33,822	34,927	38,154	36,305	31,873	25,492	25,597	16,293	319,098
		MEASURED RETURNS	634	687	609	677	1,994	1,636	1,760	1,450	1,198	1,006	984	322	12,957
		UNMEASURED RETURNS	0	0	0	0	0	0	0	0	0	0	0	0	
		CONSUMPTIVE USE	11,535	13,004	21,595	27,894	31,828	33,291	36,394	34,855	30,675	24,486	24,613	15,971	306,141
<b>OTHER USERS PUMPING FROM COLORADO RIVER AND WELLS IN FLOOD PLAIN</b>															
DAVIS DAM TO INTERNATIONAL BOUNDARY	10	DIVERSION	366	447	604	661	805	983	1,077	1,014	818	691	490	469	8,425
		MEASURED RETURNS	4	5	7	8	10	12	13	12	10	8	6	6	101
		UNMEASURED RETURNS	154	189	259	280	341	419	456	435	350	291	206	201	3,581
		CONSUMPTIVE USE	208	253	338	373	454	552	608	567	458	392	278	262	4,743
<b>CALIFORNIA TOTALS</b>															
		DIVERSION	219,598	211,020	420,473	436,740	547,436	500,150	563,507	531,598	492,082	406,529	370,678	272,078	4,971,889
		MEASURED RETURNS	34,280	34,501	40,140	40,982	58,252	51,202	54,456	56,499	54,827	52,944	45,691	36,877	560,651
		UNMEASURED RETURNS	1,933	2,489	5,073	6,247	7,280	6,997	8,028	7,950	6,473	5,417	4,505	3,226	65,618
		CONSUMPTIVE USE SUBTOTAL	183,385	174,030	375,260	389,511	481,904	441,951	501,023	467,149	430,782	348,168	320,482	231,975	4,345,620
		IID CU FROM BROCK RESERVOIR	0	0	0	0	0	0	0	0	0	0	8,287	2,932	11,219
		TOTAL CONSUMPTIVE USE	183,385	174,030	375,260	389,511	481,904	441,951	501,023	467,149	430,782	348,168	328,769	234,907	4,356,839

**NOTE:** The term 'CONSUMPTIVE USE' in this tabulation means diversions including underground pumping, less measured return flow and less current estimated unmeasured return flow to the river.

**Footnotes:**

1. Due to rounding to the nearest acre-foot, totals may differ from the sum of the monthly values.
2. Diversion amounts include any deliveries to the Fort Mojave Tribe by the City of Needles. Diversion values listed as pumped from river and wells are provided by the Fort Mojave Tribe and Reclamation.
3. All or a portion of this Colorado River use is offset by pumping from the LCWSP. Details shown in the LCWSP section of this report.
4. Water conserved by IID and transferred to SDCWA, in accordance with the CRWDA, Exhibit B, Column 5, and the IID/SDCWA Water Transfer Agreement and water allocated to SDCWA as a result of the CCLP and AACLP pursuant to Article 10 of the October 10, 2003 Allocation Agreement. At SDCWA's election, the water was delivered by the Secretary to Lake Havasu under Article 4(c) of the CRWDA and there made available by SDCWA to MWD under the terms of the SDCWA/MWD Exchange Agreement.
5. Reported as an annual total only then distributed monthly according to the monthly use patterns of nearby users.
6. These values represent an estimate of the amount of diversions required by the Tribe to provide domestic water service for users within the reservation.
7. Unassigned measured returns include drainage from the Indian Unit and the Bard Unit in the Reservation Division but excludes seepage from the AAC.
8. Colorado River water captured in the Warren H. Brock Reservoir and delivered to IID as consumptive use. Flow measurement is made at the Brock Reservoir outlet channel station 21+36.
9. IID conserved 33,736 acre-feet of Colorado River water in 2010 which was transferred to SDCWA and exchanged with CVWD for non-Colorado River water to meet Salton Sea mitigation requirements for 2010. Also, in 2010, IID delivered 46,546 acre-feet of Colorado River water to the Salton Sea with a stated intention to store the water for use for Salton Sea mitigation requirements in 2011 and half of 2012. The appropriate accounting for the 46,546 acre-feet is under review by Reclamation and will be reflected in the Colorado River Accounting and Water Use Report for 2011.
10. Details can be found on the California Supplemental page.

CALIFORNIA SUPPLEMENTAL TABULATION  
CALENDAR YEAR 2010  
STATE OF CALIFORNIA

WATER USER	Ftnts	USGS# 1	5/12/11												TOTAL	
			(ACRE-FEET)													
			JAN	FEB	MAR	APR	MAY	JUN	JUL	AUG	SEP	OCT	NOV	DEC		
De Soto Ranch	2	CEW-17	0	0	0	0	0	0	0	0	0	0	0	0	0	
De Soto Ranch	2	CEW-18	0	0	0	0	0	0	0	0	0	0	0	0	0	
Southern California Gas	3	CEW-21	3	4	5	5	6	8	9	8	7	5	4	4	68	
Pacific Gas & Electric Company	3		5	6	8	9	11	14	15	14	11	9	7	7	116	
Havasu Water Company	3	Needles report	3	3	4	5	6	7	8	7	6	5	3	3	60	
Vista Del Lago	3	Needles report	1	1	2	2	3	3	3	3	3	2	1	1	25	
Wells reported under non-Federal subcontracts to LCWSP	3	Needles report	13	16	22	23	28	35	37	36	28	24	17	17	296	
SUBTOTALS, DAVIS DAM TO PARKER DAM			4	25	30	41	44	54	67	72	68	55	45	32	565	
	5	MEASURED RETURNS	4	5	7	8	10	12	13	12	10	8	6	6	101	
		UNMEASURED RETURNS	6	7	12	12	14	18	19	18	15	13	9	9	152	
		CONSUMPTIVE USE	15	18	22	24	30	37	40	38	30	24	17	17	312	
Wetmore, Kenneth C.			0	0	0	0	1	1	1	1	1	0	0	0	5	
Williams, Jerry O. & Deloris P.			0	0	0	0	0	0	1	0	0	0	0	0	1	
Carney, Jerome D.			0	0	0	0	0	0	1	0	0	0	0	0	1	
Wetmore, Mark M.			0	0	1	1	1	1	1	1	1	1	1	0	9	
Citrus Ranch (C.L. Lye)	2	CEW-16	2	2	3	3	4	4	5	4	4	3	2	2	38	
BLM Permitees (LHFO & YFO)	3,6		23	22	23	33	35	50	58	37	47	45	34	21	428	
SUBTOTALS, PARKER DAM TO IMPERIAL DAM			4	25	24	27	37	41	56	67	43	53	49	37	482	
		MEASURED RETURNS	0	0	0	0	0	0	0	0	0	0	0	0	0	
		UNMEASURED RETURNS	6	6	6	9	11	17	18	12	17	13	9	6	130	
		CONSUMPTIVE USE	19	18	21	28	30	39	49	31	36	36	28	17	352	
<u>FORT YUMA INDIAN RESERVATION - CA</u>																
Living Earth Farm	2	CEW-2, CDP-3	0	0	0	0	0	0	0	0	0	0	0	0	0	
MivCo Packing	2	CEW-14	0	0	0	0	0	0	0	0	0	0	0	0	0	
Valdez, Mike	2	CDP-1,2, CEW-01, CEW-15	74	92	126	136	166	201	219	211	166	139	99	97	1,726	
Ranch "5" Lands, Yuma Island, CA (351 ac)	7	AAC diversion	0	0	0	0	0	0	0	0	0	0	0	0	0	
Huerta Packing	2	CDP-6/7	0	0	0	0	0	0	0	0	0	0	0	0	0	
SUM OF PUMPING ON FYIR, CALIFORNIA			4	74	92	126	136	166	201	219	211	166	139	99	1,726	
SUM OF UNMEASURED RETURNS, FYIR, CALIFORNIA				33	41	56	61	74	90	98	95	74	62	44	772	
<u>YUMA ISLAND - CALIFORNIA</u>																
Arizona State Land Department Lessees:																
Curtis Family Trust	2	AEP-02, AEP-03, AEW-04, AEW-05,	7	9	12	14	17	20	22	21	17	14	10	10	173	
Martin Family Trust	2	CEP-01,02, CDW-07	22	27	37	40	49	59	65	62	49	41	29	29	509	
Billy Turner	2	CDW-5, CEW-7	0	0	0	0	0	0	0	0	0	0	0	0	0	
Leroy Heile	2	CDW-8 (CEW-12)	46	57	78	84	103	125	136	131	103	87	61	61	1,072	
James Wilson	2	CEW-11	10	13	17	19	23	28	30	29	23	19	13	13	237	
Griffin Produce Company	2	CDW-2	8	11	14	15	19	23	25	24	19	16	11	11	196	
Perez Family Trust	2	CEW-9	10	13	17	18	22	27	30	29	22	19	13	13	233	
Clifford Winton Jr.	2,8	CEW-13	0	0	0	0	0	0	0	0	0	0	0	0	0	
Clara Jean Wilson	2,8		0	0	0	0	0	0	0	0	0	0	0	0	0	
Lou Ella Harp	2,8		0	0	0	0	0	0	0	0	0	0	0	0	0	
Robert E. Harp	2,8		47	58	79	86	105	127	139	133	105	88	62	61	1,090	
K.H. Easterday	2		24	29	40	43	53	64	70	68	53	45	32	31	552	
Richard Lee Wilson	2		7	9	12	13	16	20	21	21	16	14	10	9	168	
Dees, Alex	2		55	68	94	101	124	150	164	157	124	104	73	72	1,286	
Mike Palmer (L.O. Power)	2		6	7	10	11	13	16	17	17	13	11	8	7	136	
SUM OF PUMPING ON THE YUMA ISLAND, CALIFORNIA			4	242	301	410	444	544	659	719	692	544	458	322	5,652	
SUM OF UNMEASURED RETURNS, YUMA ISLAND - CALIFORNIA				109	135	185	198	242	294	321	310	244	203	144	2,527	
SUBTOTALS, ALL USES BELOW IMPERIAL DAM				316	393	536	580	710	860	938	903	710	597	421	7,378	
		MEASURED RETURNS		0	0	0	0	0	0	0	0	0	0	0	0	
		UNMEASURED RETURNS		142	176	241	259	316	384	419	405	318	265	188	3,299	
		CONSUMPTIVE USE		174	217	295	321	394	476	519	498	392	332	233	4,079	
<u>TOTAL CALIFORNIA SUPPLEMENTAL TABULATION</u>				366	447	604	661	805	983	1,077	1,014	818	691	490	469	8,425
		MEASURED RETURNS		4	5	7	8	10	12	13	12	10	8	6	101	
		UNMEASURED RETURNS		154	189	259	280	341	419	456	435	350	291	206	3,581	
		CONSUMPTIVE USE		208	253	338	373	454	552	608	567	458	392	262	4,743	

CALIFORNIA SUPPLEMENTAL TABULATION  
 CALENDAR YEAR 2010  
 STATE OF CALIFORNIA

5/12/11

(ACRE-FEET)

WATER USER	Ftns USGS# 1	JAN	FEB	MAR	APR	MAY	JUN	JUL	AUG	SEP	OCT	NOV	DEC	TOTAL
------------	--------------	-----	-----	-----	-----	-----	-----	-----	-----	-----	-----	-----	-----	-------

**Footnotes:**

1. References such as CDW/CDP/CEP are listed in the annual USGS report "2010 Arizona and California Pumped Diversions".
2. Calculated by the USGS using field crop verification and ET methodologies. See Significant Documents section of this report for further discussion.
3. Tabulated use is offset by pumping from the LCWSP. Details shown in the LCWSP Section of this report.
4. Monthly and annual totals rounded to the nearest whole number.
5. This measured return is provided to Pacific Gas & Electric Company alone for water that has been diverted and reinjected as part of its Topock Groundwater Remediation Project.
6. At the request of BLM, site specific unmeasured return flow factors have been developed and applied in CA. Some BLM lessees have very limited returns due to evaporation ponds and low application rates.
7. Surface water diversions from the AAC through Bard Water District. Diversion calculated by prorating total measured delivery by irrigated acreage in each state.
8. Acreage irrigated by co-mingled diversions from multiple wells. Diversion calculated using the methodology mentioned in footnote 2 above.

DIVERSIONS FROM MAINSTREAM-AVAILABLE RETURN FLOW  
AND CONSUMPTIVE USE OF SUCH WATER  
CALENDAR YEAR 2010  
STATE OF NEVADA

WATER USER	Fmts	5/12/11 (ACRE-FEET)												TOTAL <sup>1</sup>	
		JAN	FEB	MAR	APR	MAY	JUN	JUL	AUG	SEP	OCT	NOV	DEC		
BOULDER CANYON PROJECT															
DIVERSION AT HOOVER DAM															
		DIVERSION	5	3	4	6	5	6	8	7	7	6	4	4	65
		MEASURED RETURNS	3	3	3	3	3	4	4	5	4	4	3	3	42
		UNMEASURED RETURNS	0	0	0	0	0	0	0	0	0	0	0	0	0
		CONSUMPTIVE USE	2	0	1	3	2	2	4	2	3	2	1	1	23
ROBERT B. GRIFFITH WATER PROJECT															
DIVERSION AT SADDLE ISLAND, LAKE MEAD		DIVERSION	24,541	21,396	29,345	33,669	42,042	40,672	46,930	46,590	36,521	39,454	33,284	27,974	422,418
LAKE MEAD NATIONAL RECREATION AREA															
DIVERSIONS FROM LAKE MEAD		DIVERSION	26	25	28	33	36	49	58	58	51	33	30	29	456
		MEASURED RETURNS	0	0	0	0	0	0	0	0	0	0	0	0	0
		UNMEASURED RETURNS	0	0	0	0	0	0	0	0	0	0	0	0	0
		CONSUMPTIVE USE	26	25	28	33	36	49	58	58	51	33	30	29	456
LAKE MEAD NATIONAL RECREATION AREA															
DIVERSION FROM LAKE MOHAVE		DIVERSION	11	8	9	9	14	15	18	18	18	14	15	13	162
(COTTONWOOD)		MEASURED RETURNS	0	0	0	0	0	0	0	0	0	0	0	0	0
		UNMEASURED RETURNS	0	0	0	0	0	0	0	0	0	0	0	0	0
		CONSUMPTIVE USE	11	8	9	9	14	15	18	18	18	14	15	13	162
BASIC MANAGEMENT INC.															
DIVERSION AT SADDLE ISLAND, LAKE MEAD		DIVERSION	311	299	311	378	366	413	530	508	483	448	456	576	5,079
		MEASURED RETURNS	0	0	0	0	0	0	0	0	0	0	0	0	0
		UNMEASURED RETURNS	0	0	0	0	0	0	0	0	0	0	0	0	0
		CONSUMPTIVE USE	311	299	311	378	366	413	530	508	483	448	456	576	5,079
CITY OF HENDERSON															
DIVERSION AT SADDLE ISLAND, LAKE MEAD		DIVERSION	963	510	1,140	1,566	1,261	1,212	1,476	1,326	1,201	1,190	1,211	788	13,844
		MEASURED RETURNS	0	0	0	0	0	0	0	0	0	0	0	0	0
		UNMEASURED RETURNS	0	0	0	0	0	0	0	0	0	0	0	0	0
		CONSUMPTIVE USE	963	510	1,140	1,566	1,261	1,212	1,476	1,326	1,201	1,190	1,211	788	13,844
NEVADA DEPARTMENT OF FISH AND GAME															
DIVERSION AT SADDLE ISLAND, LAKE MEAD		DIVERSION	6	8	13	18	27	26	27	32	10	20	22	25	234
		MEASURED RETURNS	5	7	12	18	26	26	31	9	19	21	24	24	224
		UNMEASURED RETURNS	0	0	0	0	0	0	0	0	0	0	0	0	0
		CONSUMPTIVE USE	1	1	1	0	1	0	1	1	1	1	1	1	10
PACIFIC COAST BUILDING PRODUCTS INC.															
DIVERSION AT GYPSUM WASH, LAKE MEAD		DIVERSION	82	58	49	52	52	43	39	44	52	39	40	36	586
		MEASURED RETURNS	0	0	0	0	0	0	0	0	0	0	0	0	0
		UNMEASURED RETURNS	0	0	0	0	0	0	0	0	0	0	0	0	0
		CONSUMPTIVE USE	82	58	49	52	52	43	39	44	52	39	40	36	586
SCE (MOHAVE GENERATING STATION)															
WELL		DIVERSION	20	18	18	14	24	56	54	44	39	37	26	20	370
		MEASURED RETURNS	0	0	0	0	0	0	0	0	0	0	0	0	0
		UNMEASURED RETURNS	0	0	0	0	0	0	0	0	0	0	0	0	0
		CONSUMPTIVE USE	20	18	18	14	24	56	54	44	39	37	26	20	370
BIG BEND WATER DISTRICT															
		DIVERSION	281	268	306	343	377	414	482	470	405	381	325	293	4,345
		MEASURED RETURNS	161	157	178	181	185	187	227	216	188	186	160	156	2,182
		UNMEASURED RETURNS	0	0	0	0	0	0	0	0	0	0	0	0	0
		CONSUMPTIVE USE	120	111	128	162	192	227	255	254	217	195	165	137	2,163
BIG BEND CONSERVATION AREA															
		DIVERSION	0	0	0	0	1	0	1	0	0	0	0	0	2
		MEASURED RETURNS	0	0	0	0	0	0	0	0	0	0	0	0	0
		UNMEASURED RETURNS	0	0	0	0	0	0	0	0	0	0	0	0	0
		CONSUMPTIVE USE	0	0	0	0	1	0	1	0	0	0	0	0	2
FORT MOJAVE INDIAN RESERVATION															
2 WELLS	2	DIVERSION	76	346	352	134	283	744	935	847	76	226	130	82	4,231
		MEASURED RETURNS	0	0	0	0	0	0	0	0	0	0	0	0	0
		UNMEASURED RETURNS	25	114	116	44	93	246	309	280	25	75	43	27	1,397
		CONSUMPTIVE USE	51	232	236	90	190	498	626	567	51	151	87	55	2,834
LAS VEGAS WASH RETURN FLOWS	3	RETURNS	19,474	17,258	18,961	16,727	16,140	15,067	15,670	15,963	15,453	17,650	17,957	20,190	206,510
NEVADA TOTALS															
		DIVERSION	26,322	22,939	31,575	36,222	44,488	43,650	50,558	49,944	38,863	41,848	35,543	29,840	451,792
		MEASURED RETURNS	19,643	17,425	19,154	16,929	16,354	15,284	15,927	16,215	15,654	17,859	18,141	20,373	208,958
		UNMEASURED RETURNS	25	114	116	44	93	246	309	280	25	75	43	27	1,397
		CONSUMPTIVE USE	6,654	5,400	12,305	19,249	28,041	28,120	34,322	33,449	23,184	23,914	17,359	9,440	241,437

DIVERSIONS FROM MAINSTREAM-AVAILABLE RETURN FLOW  
AND CONSUMPTIVE USE OF SUCH WATER  
CALENDAR YEAR 2010  
STATE OF NEVADA

WATER USER	Ftnts	5/12/11 (ACRE-FEET)												TOTAL <sup>1</sup>	
		JAN	FEB	MAR	APR	MAY	JUN	JUL	AUG	SEP	OCT	NOV	DEC		
GROUNDWATER INJECTED STORAGE	4														
LAS VEGAS VALLEY WATER DISTRICT															
	INJECTED	0	0	0	0	0	0	0	0	0	0	2,491	3,607	2,694	8,792
	WITHDRAWN	0	0	0	0	0	0	0	0	0	166	148	135	50	499
CITY OF NORTH LAS VEGAS															
	INJECTED	0	0	0	0	0	0	0	0	0	0	0	0	0	0
	WITHDRAWN	0	0	0	0	0	0	0	0	0	0	0	0	0	0

**NOTE:** The term 'CONSUMPTIVE USE' in this tabulation means diversions including underground pumping, less measured return flow and less current estimated unmeasured return flow to the river.

**Footnotes:**

1. Totals may differ from the sum of the monthly values due to rounding to the nearest acre-foot.
2. Diversions were fully measured and reported by Reclamation.
3. Estimated return based on historic use method adopted by the task force on unmeasured return flows on August 28, 1984 and revised as noted in the Reclamation letter to SNWA and CRCN dated December 12, 2007.

4. Nevada Injected Storage Balance:	4.1	Beginning of Year Cumulative Injected Storage	350,641
		Plus Current Year Additions	8,792
		Minus Current Year Withdrawals	499
		End of Year Cumulative Injected Storage	358,934

4.1 Colorado River water injected into ground water storage is accounted for as a consumptive use in the year in which it is diverted from the Colorado River. It will not be accounted for as a consumptive use in the year in which it is withdrawn from storage, but because it originated as Colorado River water it will be accounted for as a return flow credit in the year in which it returns to the Colorado River.

**RECORDS OF RELEASES OF MAINSTREAM WATER PURSUANT TO ORDERS THEREFOR BUT NOT DIVERTED BY PARTY ORDERING THE SAME, AND THE QUANTITY OF SUCH WATER DELIVERED TO MEXICO IN SATISFACTION OF THE MEXICAN TREATY OR DIVERTED BY OTHERS; IN ACCORDANCE WITH ARTICLE V(C) OF THE CONSOLIDATED DECREE OF THE UNITED STATES SUPREME COURT IN *ARIZONA V. CALIFORNIA*, 547 U.S. 150 (2006)**

The following tabulations for calendar year 2010 show records of releases of mainstream water pursuant to orders therefor but not diverted by the party ordering the same (rejected water), and the quantity of such water delivered to Mexico in satisfaction of the Mexican Treaty or diverted by others in satisfaction of decreed rights. In addition to the requirements of the Decree, Reclamation tabulated quantities of such rejected water passing to Mexico in excess of treaty requirements and quantities captured in storage in federally operated facilities.

Water ordered but not diverted was computed daily for each diverter as the difference between the approved daily order and the mean daily delivery on the day the diversion was made. The monthly quantities shown on the tabulations are the sum of the daily quantities. Daily orders are provided to Reclamation in advance of the delivery date by the amount of time required for water to travel between the storage location and the user's point of diversion from the mainstream. To the extent possible, water ordered but not diverted was delivered to others in satisfaction of their rights. Any remaining water ordered but not diverted was apportioned between delivery to storage, delivery to Mexico in satisfaction of treaty requirements and finally, to Mexico in excess of treaty requirements.

The water users included in this tabulation are the major water users from which Reclamation receives a daily water order, and with the exception of CAP and MWD, are those that divert their water downstream of Parker Dam. Currently, no daily orders are received from Nevada for diversion from the Colorado River therefore no sheet is included for Nevada. In addition, the storage capacity of Lake Mead is large enough in relation to the present daily diversions from the reservoir by Nevada that any water ordered but not diverted would be retained for future use and would not pass to Mexico in excess of treaty requirements.

The "Delivered to Mexico in Excess of Treaty" values displayed in this section of the report reflect only the water over delivered to Mexico, according to IBWC's schedule, resulting from water that had been ordered but not diverted. The "To Mexico in Excess of Treaty" values displayed in the Article V (D) section reflect all water under/over delivered to Mexico according to IBWC's schedule. No comparison between the two sections should be made.



RELEASE OF MAINSTREAM WATER PURSUANT TO ORDERS  
 BUT NOT DIVERTED BY PARTY ORDERING SAME AND  
 QUANTITY OF SUCH WATER DELIVERED TO MEXICO  
 IN SATISFACTION OF MEXICAN TREATY OR DIVERTED BY OTHERS  
 STATE OF ARIZONA  
 CALENDAR YEAR 2010

5/12/11	(ACRE-FEET)												
WATER USER	JAN	FEB	MAR	APR	MAY	JUN	JUL	AUG	SEP	OCT	NOV	DEC	TOTAL
CENTRAL ARIZONA PROJECT, DIVERSION AT LAKE HAVASU													
ORDERED BUT NOT DIVERTED	3,748	1,316	5,470	3,490	2,288	3,950	1,594	4,221	2,074	12,887	2,529	1,066	44,633
DELIVERED TO MEXICO IN SATISFACTION OF TREATY													
DIVERTED BY OTHERS													
DELIVERED TO STORAGE <sup>1</sup>	3,748	1,316	5,470	3,490	2,288	3,950	1,594	4,221	2,074	12,887	2,529	1,066	44,633
DELIVERED TO MEXICO IN EXCESS OF TREATY	0	0	0	0	0	0	0	0	0	0	0	0	0
COLORADO RIVER INDIAN RESERVATION, DIVERSION AT HEADGATE ROCK													
ORDERED BUT NOT DIVERTED	4,774	242	353	292	768	75	1,143	280	282	557	581	4,994	14,341
DELIVERED TO MEXICO IN SATISFACTION OF TREATY	0	0	7	236	251	49	270	161	79	450	79	2,672	4,255
DIVERTED BY OTHERS	4,774	159	345	18	350	20	730	102	55	20	330	1,826	8,728
DELIVERED TO STORAGE <sup>1</sup>	0	83	2	37	74	0	139	16	144	3	133	227	858
DELIVERED TO MEXICO IN EXCESS OF TREATY	0	0	0	0	93	6	4	0	3	84	40	270	500
NORTH GILA VALLEY I.D.D., DIVERSION AT IMPERIAL DAM													
ORDERED BUT NOT DIVERTED	1,529	579	834	343	1,071	629	795	507	1,159	1,111	1,233	1,509	11,300
DELIVERED TO MEXICO IN SATISFACTION OF TREATY	659	365	376	169	246	235	148	64	302	702	514	677	4,458
DIVERTED BY OTHERS	174	117	142	120	621	361	510	411	554	73	366	213	3,662
DELIVERED TO STORAGE <sup>1</sup>	215	73	139	36	177	26	132	20	225	60	263	144	1,510
DELIVERED TO MEXICO IN EXCESS OF TREATY	481	24	177	18	27	7	4	13	78	277	89	475	1,671
GILA MONSTER FARMS DIVERSION AT IMPERIAL DAM													
ORDERED BUT NOT DIVERTED	495	332	502	481	311	200	335	975	451	435	613	590	5,719
DELIVERED TO MEXICO IN SATISFACTION OF TREATY	164	44	174	171	61	34	14	111	87	269	288	227	1,643
DIVERTED BY OTHERS	78	252	183	137	230	159	278	815	244	32	177	80	2,664
DELIVERED TO STORAGE <sup>1</sup>	83	34	38	61	11	5	42	33	99	24	101	47	576
DELIVERED TO MEXICO IN EXCESS OF TREATY	170	2	107	111	9	2	1	17	22	111	48	236	836
WELLTON-MOHAWK I.D.D., DIVERSION AT IMPERIAL DAM													
ORDERED BUT NOT DIVERTED	8,568	4,842	5,612	4,154	6,702	2,797	2,640	2,624	1,876	5,862	5,602	2,834	54,113
DELIVERED TO MEXICO IN SATISFACTION OF TREATY	4,584	3,589	2,106	1,724	1,990	640	391	231	767	3,879	2,632	1,123	23,656
DIVERTED BY OTHERS	414	617	1,168	952	3,753	1,952	1,424	2,297	922	232	1,479	273	15,482
DELIVERED TO STORAGE <sup>1</sup>	538	378	889	587	535	174	814	20	92	316	1,217	176	5,737
DELIVERED TO MEXICO IN EXCESS OF TREATY	3,032	258	1,450	890	424	31	12	77	94	1,434	274	1,262	9,237

RELEASE OF MAINSTREAM WATER PURSUANT TO ORDERS  
BUT NOT DIVERTED BY PARTY ORDERING SAME AND  
QUANTITY OF SUCH WATER DELIVERED TO MEXICO  
IN SATISFACTION OF MEXICAN TREATY OR DIVERTED BY OTHERS  
STATE OF ARIZONA  
CALENDAR YEAR 2010

5/12/11	(ACRE-FEET)												
WATER USER	JAN	FEB	MAR	APR	MAY	JUN	JUL	AUG	SEP	OCT	NOV	DEC	TOTAL
<b>YUMA IRRIGATION DISTRICT, DIVERSION AT IMPERIAL DAM</b>													
ORDERED BUT NOT DIVERTED	1,850	1,260	448	538	555	741	398	559	940	1,580	1,436	1,504	11,808
DELIVERED TO MEXICO IN SATISFACTION OF TREATY	869	887	238	100	107	75	28	204	566	1,044	570	739	5,429
DIVERTED BY OTHERS	155	259	14	161	360	595	274	273	280	95	480	214	3,160
DELIVERED TO STORAGE <sup>1</sup>	122	71	12	58	81	64	94	18	65	110	306	100	1,101
DELIVERED TO MEXICO IN EXCESS OF TREATY	704	43	184	218	7	7	2	64	29	331	80	451	2,118
<b>YUMA MESA I.D.D., DIVERSION AT IMPERIAL DAM</b>													
ORDERED BUT NOT DIVERTED	6,015	3,557	4,146	5,105	4,128	1,758	1,868	2,231	4,380	6,197	4,249	4,677	48,311
DELIVERED TO MEXICO IN SATISFACTION OF TREATY	2,901	1,452	2,232	2,149	679	454	168	90	1,434	4,421	2,353	2,345	20,678
DIVERTED BY OTHERS	471	1,777	826	1,285	2,760	947	1,658	1,996	1,896	388	580	345	14,929
DELIVERED TO STORAGE <sup>1</sup>	571	251	319	666	443	340	39	69	708	251	1,010	475	5,142
DELIVERED TO MEXICO IN EXCESS OF TREATY	2,072	77	769	1,006	247	17	2	76	342	1,137	305	1,512	7,562
<b>UNIT "B" IRRIGATION DISTRICT, DIVERSION AT IMPERIAL DAM</b>													
ORDERED BUT NOT DIVERTED	426	346	577	498	290	466	403	329	524	1,179	593	297	5,928
DELIVERED TO MEXICO IN SATISFACTION OF TREATY	216	123	215	153	102	123	50	62	185	854	435	91	2,607
DIVERTED BY OTHERS	16	194	187	128	160	295	319	200	225	60	80	18	1,882
DELIVERED TO STORAGE <sup>1</sup>	62	29	46	62	17	38	32	53	82	26	54	20	522
DELIVERED TO MEXICO IN EXCESS OF TREATY	131	1	129	155	11	10	2	14	31	240	24	169	917
<b>YUMA COUNTY WATER USERS' ASSOCIATION, DIVERSION AT IMPERIAL DAM</b>													
ORDERED BUT NOT DIVERTED	8,332	2,623	10,437	5,947	3,086	2,077	336	3,424	2,338	8,868	5,448	9,291	62,207
DELIVERED TO MEXICO IN SATISFACTION OF TREATY	3,316	1,689	6,177	2,922	529	672	0	637	808	5,275	2,786	2,849	27,659
DIVERTED BY OTHERS	732	744	1,834	1,412	1,869	1,326	225	2,150	1,124	637	1,558	2,478	16,090
DELIVERED TO STORAGE <sup>1</sup>	881	141	690	960	549	56	110	181	328	397	720	544	5,558
DELIVERED TO MEXICO IN EXCESS OF TREATY	3,403	48	1,736	654	139	22	0	457	77	2,560	384	3,420	12,901
<b>ARIZONA TOTALS</b>													
ORDERED BUT NOT DIVERTED	35,737	15,097	28,380	20,847	19,200	12,693	9,511	15,150	14,023	38,678	22,283	26,763	258,361
DELIVERED TO MEXICO IN SATISFACTION OF TREATY	12,709	8,149	11,525	7,623	3,966	2,282	1,070	1,560	4,228	16,895	9,656	10,721	90,384
DIVERTED BY OTHERS	6,815	4,120	4,699	4,214	10,102	5,654	5,418	8,243	5,301	1,536	5,049	5,446	66,597
DELIVERED TO STORAGE <sup>1</sup>	6,221	2,376	7,605	5,957	4,174	4,654	2,997	4,630	3,819	14,073	6,333	2,799	65,637
DELIVERED TO MEXICO IN EXCESS OF TREATY	9,993	452	4,552	3,053	957	103	26	718	675	6,174	1,244	7,796	35,742

**Footnotes:**

1. Delivered to temporary storage in Senator Wash.

RELEASE OF MAINSTREAM WATER PURSUANT TO ORDERS  
BUT NOT DIVERTED BY PARTY ORDERING SAME AND  
QUANTITY OF SUCH WATER DELIVERED TO MEXICO  
IN SATISFACTION OF MEXICAN TREATY OR DIVERTED BY OTHERS  
STATE OF CALIFORNIA  
CALENDAR YEAR 2010

5/12/11	(ACRE-FEET)												
WATER USER	JAN	FEB	MAR	APR	MAY	JUN	JUL	AUG	SEP	OCT	NOV	DEC	TOTAL
METROPOLITAN WATER DISTRICT, DIVERSION AT LAKE HAVASU													
ORDERED BUT NOT DIVERTED	1,930	2,008	2,692	1,145	1,724	13,553	1,254	408	215	0	184	2,844	27,957
DELIVERED TO MEXICO IN													
SATISFACTION OF TREATY													
DIVERTED BY OTHERS													
DELIVERED TO STORAGE <sup>1</sup>	1,930	2,008	2,692	1,145	1,724	13,553	1,254	408	215	0	184	2,844	27,957
DELIVERED TO MEXICO IN													
EXCESS OF TREATY													0
PALO VERDE IRRIGATION DISTRICT, DIVERSION AT PALO VERDE DAM													
ORDERED BUT NOT DIVERTED	1,363	553	292	698	825	436	317	996	595	470	835	393	7,773
DELIVERED TO MEXICO IN	508	175	85	329	368	104	72	419	168	350	545	246	3,370
SATISFACTION OF TREATY													
DIVERTED BY OTHERS	281	345	200	239	366	192	210	523	301	19	140	15	2,832
DELIVERED TO STORAGE <sup>1</sup>	144	27	1	96	75	138	25	41	123	26	108	39	843
DELIVERED TO MEXICO IN													
EXCESS OF TREATY	429	6	5	35	16	2	11	13	2	75	42	92	728
YUMA PROJECT RESERVATION DIVISION, DIVERSION AT IMPERIAL DAM													
ORDERED BUT NOT DIVERTED	3,746	2,114	2,318	1,977	1,874	1,986	1,195	1,949	2,223	2,510	4,815	5,477	32,183
DELIVERED TO MEXICO IN	1,511	1,262	983	737	544	379	312	213	904	1,622	2,441	1,822	12,730
SATISFACTION OF TREATY													
DIVERTED BY OTHERS	422	538	629	550	1,019	1,445	694	1,640	930	171	1,119	1,210	10,367
DELIVERED TO STORAGE <sup>1</sup>	503	252	288	297	168	141	186	45	269	73	908	340	3,469
DELIVERED TO MEXICO IN													
EXCESS OF TREATY	1,310	61	418	393	143	21	3	51	120	644	347	2,105	5,617
IMPERIAL IRRIGATION DISTRICT, DIVERSION AT IMPERIAL DAM													
ORDERED BUT NOT DIVERTED	28,022	21,592	38,605	25,260	3,711	16,572	8,429	14,177	25,396	73,709	23,779	25,470	304,723
DELIVERED TO MEXICO IN	9,484	15,331	18,591	7,661	1,661	6,147	2,729	3,280	11,149	45,404	12,744	9,042	143,223
SATISFACTION OF TREATY													
DIVERTED BY OTHERS	1,895	1,867	6,549	6,211	1,346	8,453	5,010	8,594	8,964	4,273	4,955	4,764	62,881
DELIVERED TO STORAGE <sup>1</sup>	1,418	3,296	3,745	4,986	525	1,637	645	1,501	3,138	3,377	4,358	1,789	30,415
DELIVERED TO MEXICO IN													
EXCESS OF TREATY	15,225	1,099	9,721	6,402	179	335	44	802	2,145	20,656	1,722	9,875	68,204
COACHELLA VALLEY WATER DISTRICT, DIVERSION AT IMPERIAL DAM													
ORDERED BUT NOT DIVERTED	3,803	1,124	6,217	5,960	5,076	6,879	5,379	5,295	6,210	7,718	5,530	13,054	72,246
DELIVERED TO MEXICO IN	1,607	647	2,508	1,936	1,373	1,157	834	1,063	1,605	4,602	2,694	3,591	23,618
SATISFACTION OF TREATY													
DIVERTED BY OTHERS	185	182	2,112	1,898	3,143	5,181	4,037	3,771	3,239	484	1,560	4,804	30,596
DELIVERED TO STORAGE <sup>1</sup>	499	282	525	1,042	251	468	500	217	925	441	859	550	6,558
DELIVERED TO MEXICO IN													
EXCESS OF TREATY	1,511	14	1,072	1,083	309	73	8	244	442	2,192	416	4,109	11,473
CALIFORNIA TOTALS													
ORDERED BUT NOT DIVERTED	38,863	27,392	50,123	35,040	13,210	39,427	16,574	22,825	34,640	84,407	35,143	47,239	444,882
DELIVERED TO MEXICO IN	13,111	17,415	22,167	10,664	3,946	7,787	3,946	4,975	13,826	51,978	18,424	14,701	182,940
SATISFACTION OF TREATY													
DIVERTED BY OTHERS	2,783	2,932	9,491	8,898	5,874	15,271	9,951	14,529	13,434	4,947	7,774	10,793	106,676
DELIVERED TO STORAGE <sup>1</sup>	4,494	5,865	7,250	7,565	2,743	15,938	2,610	2,211	4,670	3,916	6,418	5,562	69,243
DELIVERED TO MEXICO IN													
EXCESS OF TREATY	18,476	1,180	11,215	7,912	647	431	67	1,109	2,709	23,567	2,527	16,182	86,022

1. Delivered to temporary storage in Senator Wash.

**RECORDS OF DELIVERIES TO MEXICO OF WATER  
IN SATISFACTION OF THE TREATY OF FEBRUARY 3, 1944 AND WATER  
PASSING TO MEXICO IN EXCESS OF TREATY REQUIREMENTS IN ACCORDANCE WITH  
ARTICLE V (D) OF THE CONSOLIDATED DECREE OF THE UNITED STATES  
SUPREME COURT IN *ARIZONA V. CALIFORNIA*, 547 U.S. 150 (2006)**

WATER USER	CALENDAR YEAR 2010												TOTAL
	5/12/11	JAN	FEB	MAR	APR	MAY	JUN	JUL	AUG	SEP	OCT	NOV	
COLORADO RIVER AT NORTHERLY INTERNATIONAL BOUNDARY <sup>1</sup>	166,000	131,517	223,080	199,146	102,140	101,376	115,000	90,653	81,568	90,863	100,774	136,525	1,538,641
<b>DELIVERIES TO MEXICO TO SATISFY TREATY REQUIREMENTS</b>													
DELIVERY AT THE LIMITROPHE <sup>2</sup>	898	685	428	458	469	417	310	396	506	902	731	548	6,748
DELIVERY AT TIJUANA <sup>3</sup>	0	0	0	0	0	0	0	0	0	0	0	0	0
DELIVERY AT SOUTHERLY INTERNATIONAL BOUNDARY	7,487	8,693	9,516	8,099	10,703	10,870	10,423	9,446	10,662	12,613	12,318	10,093	120,923
WATER ARRANGED FOR THE CIENEGA - MEXICO PORTION <sup>4</sup>	0	0	0	1,792	857	5	318	87	0	1,807	145	0	5,011
WATER ARRANGED FOR THE CIENEGA - NON-GOVERMENTAL PORTION <sup>4</sup>	0	0	0	0	0	0	0	0	0	0	0	0	0
MEXICO'S REDUCED DIVERSIONS SCHEDULE <sup>5</sup>	0	0	0	0	0	0	0	0	0	0	0	0	0
DIVERSION CHANNEL DISCHARGED TO RIVER <sup>6</sup>	0	1	0	0	0	0	0	0	0	0	0	0	1
DELIVERY TO MEXICO AT NORTHERLY INTERNATIONAL BOUNDARY <sup>7</sup>	113,213	130,852	205,024	185,007	92,199	101,131	111,634	85,613	78,140	60,677	96,128	107,699	1,367,317
<b>TOTAL TO MEXICO IN SATISFACTION OF TREATY REQUIREMENTS</b>	<b>121,598</b>	<b>140,231</b>	<b>214,968</b>	<b>195,356</b>	<b>104,228</b>	<b>112,423</b>	<b>122,685</b>	<b>95,542</b>	<b>89,308</b>	<b>75,999</b>	<b>109,322</b>	<b>118,340</b>	<b>1,500,000</b>
ACCOUNTABLE DELIVERIES TO MEXICO <sup>8</sup>	174,385	140,895	233,024	209,495	114,169	112,669	126,052	100,581	92,735	106,185	113,968	147,166	1,671,324
TO MEXICO IN EXCESS OF TREATY <sup>9</sup>	52,787	664	18,056	14,139	9,941	246	3,367	5,039	3,427	30,186	4,646	28,826	171,324
WATER ARRANGED FOR THE CIENEGA - U.S. PORTION <sup>10</sup>	1,778	194	2,016	0	0	0	0	0	0	0	0	0	3,988
WATER BYPASSED PURSUANT TO MINUTE 242 OF THE IBWC	11,286	8,969	12,059	11,616	9,316	6,829	4,886	3,863	10,342	13,799	12,692	11,807	117,464

**Footnotes:**

1. Flow in the river at the Northerly International Boundary as reported by IBWC as delivery to Mexico.
2. Wasteway deliveries to the river limitrophe via the Cooper, 11 mile, and 21 mile lateral wasteways in satisfaction of the 1944 Treaty requirements.
3. Temporary emergency delivery of Colorado River water for Tijuana is diverted at Lake Havasu by MWD and delivered via the Colorado River Aqueduct, MWD, SDCWA, and Otay Water District's distribution systems pursuant to Minutes No. 310 and 314 of the IBWC.
4. In accordance with the Joint Report of the Principal Engineers Concerning U.S. - Mexico Joint Cooperative Actions Related to the Yuma Desalting Plant Pilot Run. This water is included as a portion of Mexico's scheduled water order in accordance with Treaty requirements.
5. Mexico's reduced diversions pursuant to Minute 318.
6. The Diversion channel delivers water from the SIB confluence structure to the river or to the Bypass. During the months of February through September water is discharged to the Colorado River and is charged to the Treaty.
7. That portion of the flows at NIB necessary to meet the 1.5 MAF Treaty obligation.
8. Mexico's total water delivery, includes Treaty requirements in accordance with their scheduled diversions, does not include water bypassed pursuant to Minute No. 242 of the IBWC.
9. Water passing to Mexico in excess of Mexico's daily schedule. Sum of daily differences between actual flows to Mexico and Mexico's total schedule.
10. In accordance with the Joint Report of the Principal Engineers Concerning U.S. - Mexico Joint Cooperative Actions Related to the Yuma Desalting Plant Pilot Run. This water is included in the Water Bypassed Pursuant to Minute 242 and is not part of Mexico's schedule. The arranged water conveyed in 2010, when combined with the 6,297 acre-feet conveyed in 2009, fully satisfies the U.S. obligation for arranged water.

**RECORDS OF DIVERSIONS OF WATER FROM THE  
MAINSTREAM OF THE GILA AND SAN FRANCISCO RIVERS  
AND THE CONSUMPTIVE USE OF SUCH WATER, FOR THE BENEFIT  
OF THE GILA NATIONAL FOREST IN ACCORDANCE WITH  
ARTICLE V (E) OF THE CONSOLIDATED DECREE OF THE UNITED STATES  
SUPREME COURT IN *ARIZONA V. CALIFORNIA*, 547 U.S. 150 (2006)**

		CALENDAR YEAR 2010												TOTAL
		(ACRE-FEET)												
WATER USER	5/12/11	JAN	FEB	MAR	APR	MAY	JUN	JUL	AUG	SEP	OCT	NOV	DEC	
GILA RIVER	DIVERSION	0	0	0	0	0	0	0	0	0	0	0	0	0
	CONSUMPTIVE USE	0	0	0	0	0	0	0	0	0	0	0	0	0
SAN FRANCISCO RIVER	DIVERSION	0	0	0	0	0	0	0	0	0	0	0	0	0
	CONSUMPTIVE USE	0	0	0	0	0	0	0	0	0	0	0	0	0

**INFORMATION SUPPLEMENTAL TO THE REQUIREMENTS  
OF THE CONSOLIDATED DECREE OF THE UNITED STATES  
SUPREME COURT IN *ARIZONA V. CALIFORNIA*, 547 U.S. 150 (2006)**

The information contained in the following sections of this report is supplemental to the records required by Article V of the Consolidated Decree of the United States Supreme Court in *Arizona v. California*, 547 U.S. 150 (2006). The information, tabulated here, provides a more extensive record of activities relating to federal management of the Colorado River. In concise reports specific to various agreements or requirements, this information is intended to help the reader correlate the records of diversions and consumptive use found in the Article V portion of this report with the various conservation, transfer and exchange agreements. The final section contains documents significant to the actions taken by Reclamation, the Lower Division States, and the water user agencies during 2010.

## **INTERSTATE BANKING WITHIN THE STATES OF ARIZONA, CALIFORNIA, AND NEVADA**

Reclamation developed and implemented a rule that establishes the procedural framework for carrying out an interstate water banking program. The rule is codified in 43 CFR, Part 414. Authorized parties may enter into agreements whereby Colorado River water may be stored off stream in one state for future benefit of consuming entities in another state.

Reclamation, on behalf of the Secretary of the Interior (Secretary), executed a Storage and Interstate Release Agreement (SIRA) with the Southern Nevada Water Authority (SNWA), the Colorado River Commission of Nevada (CRCN), and the Arizona Water Banking Authority (AWBA). The SIRA provides structure and guidance, in accordance with Article II(B)(6) of the Consolidated Decree in *Arizona v. California*, 547 U.S.150 (2006) (Consolidated Decree), for the actions the Secretary will take in releasing Colorado River water to a specific entity in order to implement the interstate contractual distribution of water under the interstate banking program.

AWBA, SNWA, and CRCN executed an Interstate Water Banking Agreement, amended April 1, 2009, that specifies the interstate banking relationship among those parties. This agreement establishes the terms and conditions for the off stream storage of Colorado River water in Arizona and the establishment of long-term storage credits for the benefit of SNWA.

Another element of this interstate banking program is an Agreement for Development of Intentionally Created Unused Apportionment (ICUA) between AWBA and Central Arizona Water Conservation District (CAWCD). CAWCD has obligated itself to accept water recovered by pumping groundwater, represented by Long-Term Storage Credits (LTSC). CAWCD reduces its diversion of Colorado River water through the Central Arizona Project by an equivalent amount, reducing Arizona's Colorado River water consumption. This forbearance creates ICUA that is released by the Secretary for use by SNWA.

Reclamation accounts for Colorado River water diverted for storage in Arizona by AWBA, through CAWCD, as a consumptive use in Arizona in

the year Colorado River water is diverted. LTSC's are created for the account of consuming entities in Nevada or California. When LTSC's are recovered, the consuming entities in Nevada or California, pursuant to the SIRA, will divert Colorado River water in exchange for CAWCD's use of the LTSC's. The Secretary will release ICUA created by AWBA through CAWCD's forbearance to the consuming entity in Nevada or California in that same year pursuant to Article II(B)(6) of the Consolidated Decree. ICUA used in Nevada or California is accounted for as consumptive use of Colorado River water that year and is in addition to the basic apportionment of the state where the use occurs.

CRCN, SNWA, The Metropolitan Water District of Southern California (MWD), and the United States entered into a SIRA under which MWD agreed to store Nevada unused basic apportionment pursuant to Article II (B) (6) of the Consolidated Decree. When SNWA calls upon this stored water, MWD will develop ICUA by reducing its diversion of Colorado River water. The ICUA developed by MWD through its reduced diversion of Colorado River water will be released by the Secretary for use by SNWA.

CAWCD stored Colorado River water underground in Arizona under a demonstration project in the early 1990s. CAWCD developed Interstate Underground Storage (IUS) credits. CAWCD assigned IUS credits to SNWA and MWD under the 1992 agreement, as amended between MWD and CAWCD. IUS credits assigned to SNWA were incorporated into the subsequent AWBA, SNWA, CRCN Interstate Water Banking Agreement. Recovery of MWD's credits is subject to the terms of an amended letter agreement dated December 11, 2007.

The following tabulation lists Accumulated Long Term Storage Credits (ALTSC) verified by AWBA and MWD, provisional LTSC accrued during the past year, LTSC's recovered during the past year, ALTSC held for an entity with a SIRA, and credits assigned to MWD by CAWCD.

INTERSTATE BANKING  
 COLORADO RIVER WATER STORED IN ONE STATE UNDER 43 CFR PART 414  
 FOR THE BENEFIT OF SPECIFIC ENTITIES IN ANOTHER STATE  
 CALENDAR YEAR 2010

5/12/11		(ACRE-FEET)												
		JAN	FEB	MAR	APR	MAY	JUN	JUL	AUG	SEP	OCT	NOV	DEC	TOTALS
NEVADA	Verified BOY ALTSC <sup>1</sup>	582,412												
Water diverted and stored in Arizona for the benefit of SNWA.	Accrued LTSC in 10 <sup>2</sup>	0	0	0	0	0	0	0	0	3,783	1,773	11,693	1,751	19,000
	Verified LTSC in 10 <sup>3</sup>	0	0	0	0	0	0	0	0	3,480	1,631	10,758	1,611	17,480
	ICUA Developed in 10 <sup>4</sup>	0	0	0	0	0	0	0	0	0	0	0	0	0
	Total ALTSC <sup>5</sup>	582,412	582,412	582,412	582,412	582,412	582,412	582,412	582,412	585,892	587,523	598,281	599,892	599,892
Water diverted and stored by MWD for the benefit of SNWA.	Verified BOY ALTSC <sup>1,6</sup>	70,000												
	Accrued LTSC in 10 <sup>6</sup>	0	0	0	0	0	0	0	0	0	0	0	0	0
	Verified LTSC in 10	0	0	0	0	0	0	0	0	0	0	0	0	0
	ICUA Developed in 10 <sup>4,6</sup>	0	0	0	0	0	0	0	0	0	0	0	0	0
Total ALTSC <sup>6</sup>	70,000	70,000	70,000	70,000	70,000	70,000	70,000	70,000	70,000	70,000	70,000	70,000	70,000	
AMOUNT OF WATER STORED FOR THE BENEFIT OF SNWA - CURRENT YEAR		0	0	0	0	0	0	0	0	3,480	1,631	10,758	1,611	17,480
CUMULATIVE BALANCE OF WATER STORED FOR SNWA WITHIN AZ AND CA <sup>7</sup>		652,412	652,412	652,412	652,412	652,412	652,412	652,412	652,412	655,892	657,523	668,281	669,892	669,892
CALIFORNIA	Verified BOY ALTSC <sup>8</sup>	8,159												
Water diverted and stored in Arizona for the benefit of MWD.	Accrued LTSC in 10 <sup>2</sup>	0	0	0	0	0	0	0	0	0	0	0	0	0
	Verified LTSC in 10 <sup>3</sup>	0	0	0	0	0	0	0	0	0	0	0	0	0
	ICUA Developed in 10 <sup>4</sup>	407	400	1,424	1,546	738	702	743	1,120	729	55	295	0	8,159
	Total ALTSC <sup>5,8</sup>	7,752	7,352	5,928	4,382	3,644	2,942	2,199	1,079	350	295	0	0	0
STATES TOTAL	Verified BOY ALTSC <sup>1</sup>	660,571												
Water stored in AZ & CA for the benefit of SNWA and MWD.	Verified LTSC in 10 <sup>3</sup>	0	0	0	0	0	0	0	0	3,480	1,631	10,758	1,611	17,480
	ICUA Developed in 10 <sup>4</sup>	407	400	1,424	1,546	738	702	743	1,120	729	55	295	0	8,159
	Total ALTSC <sup>5</sup>	660,164	659,764	658,340	656,794	656,056	655,354	654,611	653,491	656,242	657,818	668,281	669,892	669,892

**Footnotes:**

1. ALTSC's verified by the banking entity before the beginning of the reporting year. Available for recovery by a specific entity with a valid SIRA.
2. Provisional LTSC accrued during the reporting year for the benefit of a specific consuming entity in Nevada or California with a valid SIRA. Provisional LTSC represent the amount of water diverted from the river and transported to the storage facility. Provisional LTSC have not been verified by AWBA or MWD and are not eligible for certification and recovery. Accruals of LTSC in Arizona for the benefit of consuming entities in Nevada and California are limited to 200,000 af annually.
3. In 2010, AWBA stored water in Arizona for SNWA alone. Displayed values are provisional until verified by AWBA and represent water that may be available for recovery for SNWA.
4. ICUA developed by AWBA or MWD during the reporting year. AWBA or MWD have notified that this amount is available and the Secretary has released it to a specific entity with a valid SIRA. The ALTSC are certified by AWBA or MWD when ICUA is requested, and prior to its release by the Secretary. When water is released from storage, Arizona or MWD will be required to reduce its consumptive use through the development of ICUA in an amount equal to SNWA's and/or MWD's requested release. SNWA and/or MWD will be allowed to utilize the unused apportionment in an amount equal to the ICUA made available. Total recovery of ALTSC from AWBA cannot exceed 100,000 af annually, due to a limitation defined under Arizona state law.
5. ALTSC's are cumulative monthly sum of verified, or estimated LTSC.
6. In 2004, MWD, SNWA, and the Secretary entered into a SIRA to allow MWD to divert and store water for the benefit of SNWA. When storage occurs, it must be Nevada unused apportionment, which will require Nevada to reduce its consumptive use by an amount equal to the total storage. When water is released from storage, California will be required to reduce its consumptive use through the development of ICUA in an amount equal to Nevada's requested release and Nevada will be allowed to utilize the unused apportionment in an amount equal to the ICUA made available by California.
7. This cumulative balance includes both the BOY ALTSC balance as verified by AWBA and MWD and the verified LTSC placed into storage during the current year.
8. LTSC's banked in CAWCD's name that are recoverable by MWD under the CAWCD-MWD agreement of October 15, 1992, in accordance with the amended CAWCD/ABWA/MWD letter agreement dated December 11, 2007.



## **INADVERTENT OVERRUNS AND PAYBACKS WITHIN THE STATES OF ARIZONA, CALIFORNIA, AND NEVADA**

For various reasons, a user may inadvertently divert or consumptively use Colorado River water in an amount that exceeds the amount lawfully available to the user (inadvertent overrun). Requirements are now established for the repayment of such overruns.

The Colorado River Water Delivery Agreement (CRWDA) was signed October 10, 2003, by the Secretary of the Interior. The Inadvertent Overrun and Payback Policy (IOPP) became effective January 1, 2004, and applies to inadvertent overruns of Colorado River water within the Lower Division States occurring after that date. The policy is set forth in *69 Federal Register* 12,201 (2004).

Reclamation has also implemented an administrative policy that defines inadvertent overruns, establishes procedures to account for the inadvertent overruns, and sets forth the requirements for payback to the Colorado River system.

The following tabulation displays items associated with inadvertent overruns and paybacks. This includes the identification of entitlement holders who have inadvertently overrun since January 1, 2010, or a previous year, the amount of the overrun repayments made to the Colorado River system, and the remaining overrun balance in each user's inadvertent overrun account.

OVERRUNS, PAYBACKS, AND OVERRUN ACCOUNT BALANCE <sup>1</sup>  
 CALENDAR YEAR 2010  
 STATE OF ARIZONA

5/12/11

(ACRE-FEET)

PARTICIPATING ENTITY	ACTION	SPECIFICS	TOTAL	APPROVAL	ENTITLEMENT
<b>IOPP Overruns by Individual Water Users</b>					
GILA MONSTER FARMS	IOPP Overruns by Water User	Calendar Year Diversion <sup>2</sup>	7,457	8,854	9,156
		Calendar Year Overrun - Diversion <sup>3</sup>	0		
		Calendar Year Overrun - Consumptive Use	0		
		BOY Overrun Account Balance - Diversion <sup>4</sup>	603		
		Validated Calendar Year Paybacks - Diversion <sup>5</sup>	603		
		EOY Overrun Account Balance - Diversion <sup>6</sup>	0		
		Account Balance as Percent of Entitlement	0.0%		
CENTRAL ARIZONA WATER CONSERVATION DISTRICT	IOPP Overruns by Water User	Calendar Year Use <sup>2</sup>	1,652,767	1,660,214	1,660,214
		Calendar Year Overrun <sup>3</sup>	0		
		BOY Overrun Account Balance <sup>4</sup>	11,659		
		Validated Calendar Year Paybacks <sup>5</sup>	0		
		EOY Overrun Account Balance <sup>6</sup>	11,659		
		Account Balance as Percent of Entitlement	1%		

**Footnotes:**

1. This section contains tabulations of water use overruns of approved diversions or approved consumptive use amounts in accordance with the Inadvertent Overrun and Payback Policy.
2. The water user's actual diversion or consumptive use as tabulated in the Article V (B) section of this report.
3. The amount of overrun accrued during the current year as determined by comparing the user's approved schedule against the water user's actual diversion or use.
4. The IOPP overrun account balance from the previous year, providing the user had a carry over balance.
5. Paybacks to the Colorado River system made during the current year, from conservation or application of ICS credits.
6. The remainder of the IOPP overrun account balance as of the end of the accounting year.

OVERRUNS, PAYBACKS, OVERRUN ACCOUNT BALANCE <sup>1</sup>  
 CALENDAR YEAR 2010  
 STATE OF CALIFORNIA

5/12/11

(ACRE-FEET)

PARTICIPATING ENTITY	ACTION	SPECIFICS	TOTAL	APPROVAL	ENTITLEMENT
<b>IOPP Overruns by Individual Water Users</b>					
IMPERIAL IRRIGATION DISTRICT	IOPP Overruns by Water User	Calendar Year Consumptive Use <sup>2</sup>	2,545,593	2,793,800	3,100,000
		Calendar Year Overrun - Consumptive Use <sup>3</sup>	0		
		BOY Overrun Account Balance <sup>4</sup>	0		
		Validated Calendar Year Paybacks <sup>5</sup>	0		
		EOY Overrun Account Balance <sup>6</sup>	0		
		Account Balance as Percent of Entitlement	0		
FORT MOJAVE INDIAN RESERVATION	IOPP Overruns by Water User	Calendar Year Diversion <sup>2</sup>	11,773	12,650	16,720
		Calendar Year Overrun - Diversion <sup>3</sup>	0		
		Calendar Year Overrun - Consumptive Use	0		
		BOY Overrun Account Balance - Diversion <sup>4</sup>	8,833		
		Validated Calendar Year Paybacks - Diversion <sup>5</sup>	4,070		
		Validated Calendar Year Paybacks - Consumptive Use	2,189		
		EOY Overrun Account Balance - Diversion <sup>6</sup>	4,763		
		Account Balance as Percent of Entitlement	28%		

**Footnotes:**

1. This section contains tabulations of water use overruns of approved diversions or approved consumptive use amounts in accordance with the Inadvertent Overrun and Payback Policy.
2. The water user's actual diversion or consumptive use as tabulated in the Article V (B) section of this report.
3. The amount of overrun accrued during the current year as determined by comparing the user's approved schedule against the water user's actual diversion or use.
4. The IOPP overrun account balance from the previous year, providing the user had a carry over balance.
5. Paybacks to the Colorado River system made during the current year, from conservation or application of ICS credits.
6. The remainder of the IOPP overrun account balance as of the end of the accounting year.

OVERRUNS, PAYBACKS, AND OVERRUN ACCOUNT BALANCE <sup>1</sup>  
 CALENDAR YEAR 2010  
 STATE OF NEVADA

5/12/11

(ACRE-FEET)

PARTICIPATING ENTITY	ACTION	SPECIFICS	TOTAL	APPROVAL	ENTITLEMENT
<b>IOPP Overruns by Individual Water Users</b>					
SOUTHERN NEVADA WATER AUTHORITY	IOPP Overruns by Water User	Calendar Year Consumptive Use <sup>2</sup>	241,437	300,000	300,000
		Calendar Year Overrun - Consumptive Use <sup>3</sup>	0		
		BOY Overrun Account Balance <sup>4</sup>	0		
		Validated Calendar Year Paybacks <sup>5</sup>	0		
		EOY Overrun Account Balance <sup>6</sup>	0		
		Account Balance as Percent of Entitlement	0		

**Footnotes:**

1. This section contains tabulations of water use overruns of approved diversions or approved consumptive use amounts in accordance with the Inadvertent Overrun and Payback Policy.
2. The water user's actual diversion or consumptive use as tabulated in the Article V (B) section of this report.
3. The amount of overrun accrued during the current year as determined by comparing the user's approved schedule against the water user's actual diversion or use.
4. The IOPP overrun account balance from the previous year, providing the user had a carry over balance.
5. Paybacks to the Colorado River system made during the current year, from conservation or application of ICS credits.
6. The remainder of the IOPP overrun account balance as of the end of the accounting year.

## SUMMARY OF WATER AVAILABILITY AND USE BY STATE

The Secretary of the Interior (Secretary) makes Colorado River water available to the Lower Division States in accordance with Article II of the Consolidated Decree of the United States Supreme Court in *Arizona v. California*, 547 U.S. 150 (2006). Under Article II, the Secretary apportions water to the states under shortage, normal, or surplus conditions, and may release water to a state which was apportioned to but unused by another state.

The amount of Colorado River water available for use in a state is impacted by various agreements and policies. Examples of these agreements and policies are the interstate storage and release agreements, and the Inadvertent Overrun and Payback Policy (IOPP).

The following tabulation displays the amount of Colorado River water made available to each Lower Division state under Article II of the Decree, the payback obligations by users within the state in accordance with IOPP, and the total consumptive use within a state. The table demonstrates whether the consumptive use results in an underrun or overrun of the amount of Colorado River water available to each Lower Division state in 2010.

APPORTIONMENTS, ARTICLE II(B)(6) RELEASES, PAYBACKS, AND TOTAL CONSUMPTIVE USE BY STATE <sup>1</sup>  
CALENDAR YEAR 2010

5/12/11	(ACRE-FEET)	
STATE	ADJUSTMENTS	ACTUAL USE
ARIZONA	Basic Apportionment <sup>2</sup>	2,800,000
	System Conservation Water Created by YMIDD	(3,705)
	NV II(B)(6) Released to AZ for Storage for NV <sup>3</sup>	0
	Intentionally Created Unused Apportionment for MWD	(8,159)
	Payback Obligations <sup>4</sup>	(337)
	Total Available Colorado River Water <sup>5</sup>	2,787,799
	Total Consumptive Use <sup>6</sup>	2,780,367
	State Underrun or (Overrun) <sup>7</sup>	7,432
	Overruns by Individual AZ Users	0
	Net State Underrun or (Overrun) <sup>7</sup>	7,432
CALIFORNIA	Basic Apportionment <sup>2</sup>	4,400,000
	NV II(B)(6) Released to CA for Storage for NV <sup>3</sup>	0
	Intentionally Created Arizona Unused Apportionment for MWD	8,159
	Creation of Intentionally Created Surplus (MWD) <sup>8</sup>	(100,864)
	Delivery of ICS (IID)	5,191
	IID Payback for Over Delivery to Salton Sea in 2009	(25)
	Payback Obligations <sup>4</sup>	(2,189)
	Total Available Colorado River Water <sup>5</sup>	4,310,272
	Total Consumptive Use <sup>6</sup>	4,356,839
	State Underrun or (Overrun) <sup>7</sup>	(46,567)
NEVADA	Additional Water Delivered to the Salton Sea <sup>8</sup>	46,546
	Unauthorized Agricultural Use	21
	Net State Underrun or (Overrun) <sup>7</sup>	0
	Basic Apportionment <sup>2</sup>	300,000
	Intentionally Created Surplus Requested for Delivery	0
	NV II(B)(6) Available <sup>3</sup>	0
	Total Available Colorado River Water <sup>5</sup>	300,000
Total Consumptive Use <sup>6</sup>	241,437	
Net State Underrun or (Overrun) <sup>7</sup>	58,563	

**Note:** Values displayed are consumptive use amounts only.

**Footnotes:**

1. This section tabulates increases or reductions to the amount of water available to a state. It also calculates an adjusted state limitation and compares that amount to the consumptive uses within the state. Adjustments include: releases to or from another state under Article II(B)(6) of the Consolidated Decree in *Arizona v. California*, payback obligations of individual water users, intentionally created unused apportionment, surplus, and system conservation.
2. The state basic apportionment as described in Article II(B)(1) of the Consolidated Decree.
3. Nevada unused apportionment made available to Arizona and/or California by the Secretary under Article II(B)(6) of the Consolidated Decree for storage in Arizona or California under the appropriate SIRA.
4. The reduction in the amount of water available to the state due to repayment obligations under the CRWDA or the IOPP.
5. The total amount of Colorado River water available for use by the state in 2010.
6. The total consumptive use of Colorado River water within the state as tabulated in the Article V. section of this report.
7. The difference between the Colorado River water available to the state and the state's actual consumptive use.
8. IID conserved 33,736 acre-feet of Colorado River water in 2010 which was transferred to SDCWA for exchange with CVWD for non-Colorado River water to meet Salton Sea mitigation requirements for 2010. Also, in 2010, IID delivered 46,546 acre-feet of Colorado River water to the Salton Sea with a stated intention to store the water for use for Salton Sea mitigation requirements in 2011 and half of 2012. The appropriate accounting for the 46,546 acre-feet is under review by Reclamation and will be reflected in the Colorado River Accounting and Water Use Report for 2011.

## LOWER COLORADO WATER SUPPLY PROJECT

The Lower Colorado Water Supply Act, enacted by Congress and approved by the President on November 14, 1986, authorized the Lower Colorado Water Supply Project (Project) as part of a water supply exchange program. Water pumped from the Project well field is exchanged for Colorado River water. This program is intended to help meet the domestic, municipal, industrial, and recreational water needs of water users adjacent to the Colorado River in California. The Project well field will assist those water users whose use of water from the Colorado River is either not covered by a contract or is in excess of their contractual allocation. Although some California water users have access to surplus water, the use of the Project wells is required when surplus water is unavailable or insufficient to meet the needs of the Project beneficiaries in California. Water for agricultural use is not authorized under the Act.

The Lower Colorado Water Supply Act authorizes construction of wells with a total annual capacity of 10,000 acre-feet. Currently, stage I of the Project has been completed and consists of two wells. The well field began operation on August 1, 2003. The wells are located south of the All-American Canal (AAC) in Imperial County. Ground water from the wells is withdrawn and discharged into the AAC and used by the Imperial Irrigation District (IID). IID will then forebear the use of an equal amount of water from the Colorado River. Through a contract with Reclamation, IID is responsible for the operation and maintenance of the well field.

Reclamation entered into a contract to supply Project water to the City of Needles (City) in annual amounts up to 3,500 acre-feet of the initial 8,000 acre-feet available. The contract with the City establishes a framework for the City to enter into subcontracts for delivery of Project water to non-Federal water users in San Bernardino, Riverside, and Imperial Counties. The Colorado River Board of California (CRBC) recommends whether a non-Federal applicant should be offered a subcontract for a Project water supply and notifies Reclamation. Reclamation reviews the information submitted by CRBC and recommends the approved applicants to the City which then offers subcontracts.

The Act, as amended in 2005, authorizes the Secretary of the Interior to contract for the use of Project water under terms that the Secretary determines will benefit the interest of Project users along the Colorado River. On March 26, 2007, Reclamation entered into a contract with the City and The Metropolitan Water District of Southern California (MWD), allowing Stage 1 of the Project to be pumped at capability, without jeopardizing the Project, allowing MWD to receive as much unused water as available. Certain monies received from MWD are being deposited in a Water Quality Maintenance Trust Fund to provide for the long-term viability of the Project or its replacement.

LOWER COLORADO WATER SUPPLY PROJECT  
SUMMARY OF USES OFFSET BY PUMPAGE FROM THE LOWER COLORADO WATER SUPPLY PROJECT WELLFIELD  
CALENDAR YEAR 2010

5/12/11

		TOTAL
<hr/>		
<b>LCWSP WELLFIELD PUMPAGE <sup>1</sup></b>		<b>5,104</b>
<b>LCWSP NON-FEDERAL CONTRACTORS</b>		
City of Needles	Consumptive Use	<b>478</b>
<b>Needles Subcontractors</b>		
Havasu Water Company of California	Consumptive Use	36
Vista del Lago Resort	Consumptive Use	15
Pacific Gas & Electric Company	Consumptive Use	15
Southern California Gas Company	Consumptive Use	68
Needles Other Subcontractors	Consumptive Use	178
<b>TOTAL NON-FEDERAL USE <sup>2</sup></b>	Total CU	<b>790</b>
<b>LCWSP FEDERAL CONTRACTORS</b>		
BLM	Consumptive Use	321
RECLAMATION - Parker Dam and Government Camp	Consumptive Use	121
<b>TOTAL FEDERAL USE <sup>3</sup></b>	Total CU	<b>442</b>
<b>LCWSP WATER AVAILABLE TO MWD <sup>4</sup></b>		<b>3,872</b>

**Footnotes:**

1. Non-Colorado River water pumped from the LCWSP wellfield and delivered into the AAC for use by IID. IID forebears the diversion of this amount from the Colorado River to make water available for exchange by the LCWSP beneficiaries.
2. LCWSP non-Federal contractor (City of Needles) and subcontractors - Colorado River water use exchanged with LCWSP water.
3. LCWSP Federal Contractors - Colorado River water use exchanged with LCWSP water.
4. This is the total amount of water pumped from the wellfield minus wellfield pumpage for each of the other LCWSP participants.



## **CONSERVATION, TRANSFER, AND EXCHANGE AGREEMENTS BY STATE**

Colorado River water apportioned to the Lower Division states has been further apportioned among the states of Arizona, California, and Nevada and is generally committed to specific persons or entities on a permanent basis. Increasing water demands within the Lower Division states must be met through a combination of conservation, transfers, exchanges, or new water sources which augment the limited supply of Colorado River water.

The Lower Colorado Water Supply Project (LCWSP) implements a 1986 statute which authorizes the exchange of non-Colorado River water for Colorado River water within the State of California. Water accounting information relating to the LCWSP appears in the previous section of this report.

On October 10, 2003, the Secretary of the Interior entered into the Colorado River Water Delivery Agreement (CRWDA) with Imperial Irrigation District, Coachella Valley Water District, The Metropolitan Water District of Southern California, and the San Diego County Water Authority to resolve longstanding disputes regarding the priority, use, and transfer of Colorado River water within California. The CRWDA recognizes a variety of water transfers, exchanges, and conservation programs which alter the delivery of certain Colorado River water for up to 75 years.

The California agencies entered into a series of supplemental agreements, including the Quantification Settlement Agreement, that collectively implement many provisions of the CRWDA through water transfers, water exchanges, and water conservation measures. Data relating to these California events are depicted here. There were no transfers or exchanges of Colorado River water reported within Arizona or Nevada during calendar year 2010.

### **Description of Included Tables**

The table titled “Comparison of Net California Agricultural Use” demonstrates the impact of conservation and transfers on agricultural water use in California in 2010. The table titled “Transfers, Exchanges and Water Made Available by Extraordinary Conservation” tabulates agreements in California existing outside of the CRWDA or in amounts that differ from the amounts tabulated in Exhibit B of the CRWDA. The table titled Exhibit B is reproduced from the CRWDA for convenient reference.

COMPARISON OF NET CALIFORNIA AGRICULTURAL USE <sup>1</sup>  
CALENDAR YEAR 2010

5/12/11

Uses by California Agricultural Entities	Consumptive Uses	Comments
Palo Verde Irrigation District	269,867	
Yuma Project Reservation Division	39,146	
Yuma Island Pumpers <sup>2</sup>	<u>3,125</u>	
Priorities 1, 2, 3b	312,138	
CVWD	306,141	
IID	<u>2,545,593</u>	
Total California Agricultural Use	3,163,872	
MWD Adjustments for Priority 1, 2, and 3b use	0	MWD's reductions for priorities 1, 2, and 3b count toward meeting the ISG annual target.
CRWDA Exhibit C Payback <sup>3</sup>	0	
MWD-CVWD Exchange	0	
IID and CVWD reductions for PPRs	<u>14,500</u>	
Use by California Agriculture+MWD Adjustment+ Agricultural paybacks+IID/CVWD covered PPRs	3,178,372	
 <b>ANNUAL AGRICULTURAL TARGET COMPARISON</b>		
2010 Agricultural Target	3,510,000	See Row 8, Column 23 of Exhibit B of the CRWDA
Use by California Agriculture+MWD Adjustment+ Agricultural paybacks+IID/CVWD covered PPRs	<u>3,178,372</u>	
Total Target Overrun or (Underrun)	(331,628)	
 Priority 1, 2, and 3b use below/above 420,000 af		
Palo Verde Irrigation District	269,867	
Yuma Project Reservation Division	39,146	
Yuma Island Pumpers <sup>2</sup>	<u>3,125</u>	
Total Priority 1, 2, 3b Use	312,138	
MWD reduction for Priority 1, 2, and 3b water use	0	Per Section 4.d of the CRWDA, MWD use is reduced by the sum of Priority 1, 2, and 3b use greater than 420,000 af.
Priority 1, 2, and 3b water delivered to MWD	107,862	Per Section 4.d of the CRWDA, the sum of Priority 1, 2, and 3b use that's less than 420,000 af is delivered to MWD.

**Footnotes:**

1. Sections XI.A.,B.,E.,F.,G., of the 2007 Record of Decision, Colorado River Interim Guidelines for Lower Basin Shortages and the Coordinated Operations for Lake Powell and Lake Mead contain the adopted Interim Guidelines. Section XI.G.5 of the Interim Guidelines contains benchmarks for aggregate California agricultural water use during each third year from 2003 through 2012. Exhibit B (attached) to the CRWDA, column 22 references these Interim Guidelines benchmarks, and column 23 references annual targets for aggregate agricultural water use for the years between the benchmarks. Footnotes 2 and 12 of Exhibit B define annual targets and benchmark year aggregate agricultural use totals as all consumptive use of Priorities 1 through 3 plus 14,500 acre-feet of PPR use, minus any MWD adjustment for Priority 1 through 3 use above 420,000 acre-feet.

2. Incorporation of Yuma Island Pumpers' use within Priority 2 does not represent either a final approval of this use by Reclamation or a final determination of the appropriate Decree accounting for this use; nor is it an admission by any Colorado River contractor as to the legality of this use or diversion of Colorado River water.

3. Exhibit C obligations were fully extinguished in 2009.

TRANSFERS, EXCHANGES AND WATER MADE AVAILABLE BY EXTRAORDINARY CONSERVATION  
 CALENDAR YEAR 2010  
 STATE OF ARIZONA

	5/12/11	(ACRE-FEET)												
TRANSFER PROGRAM OR PARTICIPATING AGENCIES		JAN	FEB	MAR	APR	MAY	JUN	JUL	AUG	SEP	OCT	NOV	DEC	TOTAL

No transfers were reported to Reclamation during this calendar year

**Footnotes:**  
 No footnotes for this calendar year.

TRANSFERS, EXCHANGES AND WATER MADE AVAILABLE BY EXTRAORDINARY CONSERVATION  
CALENDAR YEAR 2010  
STATE OF CALIFORNIA

TRANSFER PROGRAM OR PARTICIPATING AGENCIES	5/12/11	(ACRE-FEET)												TOTAL
	JAN	FEB	MAR	APR	MAY	JUN	JUL	AUG	SEP	OCT	NOV	DEC		
WATER CONSERVATION PROGRAM <sup>1</sup>														105,000
IID/MWD CONSERVED WATER														
MWD REDUCTION FOR CVWD USE - IID CONSERVATION <sup>2</sup>														8,000
IID CONSERVATION FOR TRANSFER TO SDCWA <sup>3</sup>	4,906	4,745	12,528	14,170	9,790	7,536	12,856	3,469	0	0	0	0	70,000	
IID CONSERVATION FOR TRANSFER TO SDCWA - MITIGATION <sup>4</sup>	0	0	0	0	0	0	0	6,477	7,430	9,140	5,809	4,905	33,761	
IID CONSERVATION FOR INTRA-PRIORITY 3 TRANSFER TO CVWD <sup>5</sup>	2,021	671	0	0	0	0	0	0	0	33	1,709	2,375	6,809	
MWD/PVID FORBEARANCE AND FOLLOWING PROGRAM <sup>6</sup>														148,614
ALL-AMERICAN CANAL LINING PROJECT - TOTAL CONSERVATION <sup>7</sup>														67,700
ALL-AMERICAN CANAL LINING PROJECT - SDCWA EXCHANGE WITH MWD <sup>7</sup>														56,200
ALL -AMERICAN CANAL LINING PROJECT SUPPLEMENTAL WATER - MWD <sup>7</sup>														11,500
COACHELLA CANAL LINING PROJECT - TOTAL CONSERVATION <sup>8</sup>														30,850
COACHELLA CANAL LINING PROJECT - SDCWA EXCHANGE WITH MWD <sup>8</sup>														25,307
COACHELLA CANAL LINING PROJECT - SUPPLEMENTAL WATER - MWD <sup>8</sup>														4,500
COACHELLA CANAL LINING PROJECT - MITIGATION <sup>8</sup>														1,043

**Note:** The remaining Exhibit B transfers, exchanges and conservation can be determined from Exhibit B in this report. Reclamation recognizes the CRWDA allows each party to make water available or to divert water made available based upon their own schedule.

**Footnotes:**

1. 1988 IID/MWD Water Conservation Program conserved water, determined in accordance with the amended 1988 Program Agreement and the amended 1989 Approval Agreement made available by IID for diversion in current year by MWD, reported as an annual total.
2. MWD reduction for up to 20,000 af of water conserved by IID under the 1988 IID/MWD Water Conservation Program for use by CVWD. This reduction occurs at CVWD's request in accordance with the 1989 Approval Agreement as amended.
3. The CRWDA allows conservation by IID for transfer to SDCWA. The annual amount of reduction is found in Column 5, Exhibit B, of the CRWDA.
4. Water transferred to SDCWA for delivery by exchange to the Salton Sea for mitigation purposes found in Column 7, Exhibit B of the CRWDA. In 2010, IID conserved 33,761 acre-feet of water through fallowing. Twenty five acre-feet of the 33,761 acre-feet of conserved water was left in Lake Mead to repay a 25 acre-foot over delivery made to the Salton Sea in 2009 leaving a balance of 33,736 acre-feet of conserved water. IID conserved 33,736 acre-feet of Colorado River water in 2010 which was transferred to SDCWA for exchange with CVWD for non-Colorado River water to meet Salton Sea mitigation requirements for 2010. Also, in 2010, IID delivered 46,546 acre-feet of Colorado River water to the Salton Sea with a stated intention to store the water for use for Salton Sea mitigation requirements in 2011 and half of 2012. The appropriate accounting for the 46,546 acre-feet is under review by Reclamation and will be reflected in the Colorado River Accounting and Water Use Report for 2011.
5. IID conserves water under an acquisition agreement with CVWD to meet the IID/CVWD Intra-priority 3 Transfer obligation shown in Column 8, Exhibit B of the CRWDA.
6. PVID's annual reduction in consumptive use through land fallowing. These values are recorded in Table 8 of a jointly produced report compiled by Reclamation, PVID, and MWD entitled "Calendar Year 2010 Fallowed Land Verification Report." This value represents the estimated reduction in PVID consumptive use as a result of fallowing of 25,947 acres from January to December 2010 and an additional fallowed acreage of 13,222 acres from January through March 2010 and lesser amounts through July 2010 in accordance with the MWD 2009-2010 One-Year Emergency Fallowing Program.
7. Water conserved through the construction of a new concrete lined canal parallel to a portion of the unlined All-American Canal. The Secretarial Determination of water conserved by the lining for Reaches of the project was issued in December 2009 (see Significant Documents). Water resulting from conservation was distributed in accordance with the Allocation Agreement among the United States, MWD, CVWD IID, SDCWA, and the SLRSP, dated October 10, 2003.
8. Water conserved through the construction of a new concrete lined canal parallel to a portion of the unlined Coachella Canal. The Secretarial Determination of water conserved by the project was issued in January 2008. Water resulting from conservation was distributed in accordance with the Allocation Agreement among the United States, MWD, CVWD, IID, SDCWA, and the SLRSP, dated October 10, 2003 and Exhibit B to the Settlement Agreement between CVWD and SDCWA, dated October 30, 2007.

TRANSFERS, EXCHANGES AND WATER MADE AVAILABLE BY EXTRAORDINARY CONSERVATION  
CALENDAR YEAR 2010  
STATE OF NEVADA

TRANSFER PROGRAM OR PARTICIPATING AGENCIES	5/12/11	(ACRE-FEET)												
		JAN	FEB	MAR	APR	MAY	JUN	JUL	AUG	SEP	OCT	NOV	DEC	TOTAL

No transfers were reported to Reclamation during this calendar year

**Footnotes:**  
No footnotes for this calendar year.

WATER MADE AVAILABLE BY CONSERVATION  
CALENDAR YEAR 2010  
BUREAU OF RECLAMATION

	5/12/11	(ACRE-FEET)											
TRANSFER PROGRAM OR PARTICIPATING AGENCIES	JAN	FEB	MAR	APR	MAY	JUN	JUL	AUG	SEP	OCT	NOV	DEC	TOTAL
YMIDD/USBR AGREEMENT FOR SYSTEM CONSERVATION <sup>1</sup>													3,705
ARIZONA GROUND WATER PERMIT <sup>2</sup>	0	0	0	0	0	0	0	0	0	0	0	0	0
WARREN H. BROCK RESERVOIR CONSERVATION <sup>3</sup>	0	0	0	0	0	0	0	0	2,957	5,286	4,027	0	12,270
YUMA DESALTING PLANT - PILOT RUN <sup>4</sup>	0	0	0	0	2,375	3,189	3,411	3,207	2,169	2,269	2,151	2,167	20,938

**Footnotes:**

1. Reclamation entered into a system conservation agreement with YMIDD to conserve water. In 2010, 3,705 acre-feet of water created as a result of the YMIDD System Conservation Program remained in Lake Mead.
2. In 2007, Reclamation was granted a permit to withdraw Arizona ground water for return credits to offset bypass flows to Mexico. The values shown represent the return flow credits earned in accordance with the permit in 2010.
3. Colorado River water captured in the Warren H. Brock Reservoir that would have otherwise been delivered to Mexico in excess of treaty requirements. The result of these captures are conservation of an equal amount of water left in Lake Mead for future use.
4. Conservation as result of the operation of the Yuma Desalting Plant in accordance with Minute 316 and the Joint Report between the U.S. and Mexico.

**EXHIBIT B**  
**QUANTIFICATION AND TRANSFERS<sup>1</sup>**  
*In Thousands of Acre-feet*

Column:	1	2	3	4	5	6	7	8	9	10	11	12	13	14	15	16	17	18	19	20	21	22	23
	Calendar Year	<sup>2</sup> Priority 1, 2 and 3b	IID Priority 3a Reductions										CVWD Priority 3a						Total Priority 1 3 Use Plus PPR Consumptive Use (sum of columns 2+13+20 plus 11+16)	<sup>12</sup> ISG Benchmarks	<sup>12</sup> Annual Targets		
			IID Priority 3a Quantified Amount	<sup>3</sup> IID Reduction: MWD 1988 Agreement Transfer	IID Reduction: SDCWA Transfer	<sup>4</sup> IID Reduction: AAC Lining IID, SDCWA & SLR	<sup>5</sup> IID Reduction: SDCWA Mitigation Transfer	<sup>7</sup> Intra-Priority 3 Transfer IID/CVWD	<sup>6</sup> IID Reduction: MWD Transfer with Salton Sea Restoration	<sup>8</sup> IID Reduction: Conditional ISG Backfill	<sup>9</sup> IID Reduction: Misc. PPRs	IID Reductions: Total Amount (sum of columns 4 through 11)	<sup>10</sup> IID Net Consumptive Use Amount (difference between column 3 and column 12)	CVWD Priority 3a Quantified Amount	<sup>4</sup> CVWD Reduction: CC Lining, SDCWA & SLR	<sup>9</sup> CVWD Reduction: Misc. PPRs	<sup>11</sup> CVWD Reductions: Total Amount (sum of columns 15 + 16)	<sup>7</sup> Intra-Priority 3 Transfer IID/CVWD				<sup>3</sup> Intra-Priority 3 Transfer MWD/CVWD	CVWD Net Consumptive Use Amount (columns 14 - 17 plus columns 18 + 19)
1	2003	420	3,100	110	10	0	5	0	0	0	11.5	136.5	2,963.5	330	0	3	3	0	20	347	3,745.0	3,740	3,740
2	2004	420	3,100	110	20	0	10	0	0	0	11.5	151.5	2,948.5	330	0	3	3	0	20	347	3,730.0		3,707
3	2005	420	3,100	110	30	0	15	0	0	0	11.5	166.5	2,933.5	330	0	3	3	0	20	347	3,715.0		3,674
4	2006	420	3,100	110	40	0	20	0	0	9	11.5	190.5	2,909.5	330	26	3	29	0	20	321	3,665.0	3,640	3,640
5	2007	420	3,100	110	50	0	25	0	0	0	11.5	196.5	2,903.5	330	26	3	29	0	20	321	3,659.0		3,603
6	2008	420	3,100	110	50	67.7	25	4	20	0	11.5	288.2	2,811.8	330	26	3	29	4	20	325	3,571.3		3,566
7	2009	420	3,100	110	60	68	30	8	40	0	11.5	327.2	2,772.8	330	26	3	29	8	20	329	3,536.3	3,530	3,530
8	2010	420	3100	110	70	68	35	12	60	0	12	366	2734	330	26	3	29	12	20	333	3501		3510
9	2011	420	3,100	110	80	67.7	40	16	80	0	11.5	405.2	2,694.8	330	26	3	29	16	20	337	3,466.3		3,490
10	2012	420	3,100	110	90	67.7	45	21	100	0	11.5	445.2	2,654.8	330	26	3	29	21	20	342	3,431.3	3,470	3,470
11	2013	420	3,100	110	100	67.7	70	26	100	0	11.5	485.2	2,614.8	330	26	3	29	26	20	347	3,396.3		3,462
12	2014	420	3,100	110	100	67.7	90	31	100	0	11.5	510.2	2,589.8	330	26	3	29	31	20	352	3,376.3		3,455
13	2015	420	3,100	110	100	67.7	110	36	100	0	11.5	535.2	2,564.8	330	26	3	29	36	20	357	3,356.3		3,448
14	2016	420	3,100	110	100	67.7	130	41	100	0	11.5	560.2	2,539.8	330	26	3	29	41	20	362	3,336.3		3,440
15	2017	420	3,100	110	100	67.7	150	45	91	0	11.5	575.2	2,524.8	330	26	3	29	45	20	366	3,325.3		
16	2018	420	3,100	110	130	67.7	0	63	0	0	11.5	382.2	2,717.8	330	26	3	29	63	20	384	3,536.3		
17	2019	420	3,100	110	160	67.7	0	68	0	0	11.5	417.2	2,682.8	330	26	3	29	68	20	389	3,506.3		
18	2020	420	3,100	110	193	67.7	0	73	0	0	11.5	454.7	2,645.3	330	26	3	29	73	20	394	3,473.8		
19	2021	420	3,100	110	205	67.7	0	78	0	0	11.5	472.2	2,627.8	330	26	3	29	78	20	399	3,461.3		
20	2022	420	3,100	110	203	67.7	0	83	0	0	11.5	474.7	2,625.3	330	26	3	29	83	20	404	3,463.8		
21	2023	420	3,100	110	200	67.7	0	88	0	0	11.5	477.2	2,622.8	330	26	3	29	88	20	409	3,466.3		
22	2024	420	3,100	110	200	67.7	0	93	0	0	11.5	482.2	2,617.8	330	26	3	29	93	20	414	3,466.3		
23	2025	420	3,100	110	200	67.7	0	98	0	0	11.5	487.2	2,612.8	330	26	3	29	98	20	419	3,466.3		
24	2026	420	3,100	110	200	67.7	0	103	0	0	11.5	492.2	2,607.8	330	26	3	29	103	20	424	3,466.3		
25	2027	420	3,100	110	200	67.7	0	103	0	0	11.5	492.2	2,607.8	330	26	3	29	103	20	424	3,466.3		
26	2028	420	3,100	110	200	67.7	0	103	0	0	11.5	492.2	2,607.8	330	26	3	29	103	20	424	3,466.3		
	2029-2037	420	3,100	110	200	67.7	0	103	0	0	11.5	492.2	2,607.8	330	26	3	29	103	20	424	3,466.3		
	2038-2047 <sup>13</sup>	420	3,100	110	200	67.7	0	103	0	0	11.5	492.2	2,607.8	330	26	3	29	103	20	424	3,466.3		
	2048-2077 <sup>14</sup>	420	3,100	110	200	67.7	0	100	0	0	11.5	489.2	2,610.8	330	26	3	29	100	20	421	3,466.3		

- Exhibit B is independent of increases and reductions as allowed under the Inadvertent Overrun and Payback Policy.
- Any higher use covered by MWD, any lesser use will produce water for MWD and help satisfy ISG Benchmarks and Annual Targets.
- IID/MWD 1988 Conservation Program conserves up to 110,000 AFY and the amount is based upon periodic verification. Of amount conserved, up to 20,000 AFY to CVWD (column 19), which does not count toward ISG Benchmarks and Annual Targets, and remainder to MWD.
- Ramp-up amounts may vary based upon construction progress, and final amounts will be determined by the Secretary pursuant to the Allocation Agreement.
- Any amount identified in Exhibit B for mitigation purposes will only be from non-Colorado River sources and these amounts may be provided by exchange for Colorado River water.
- Water would be transferred to MWD subject to satisfaction of certain conditions and to appropriate federal approvals. For informational purposes only, these transfers may also be subject to state approvals. Schedules are subject to adjustments with mutual consent.
- MWD can acquire if CVWD declines the water. Any water obtained by MWD will be counted as additional agricultural reduction to help satisfy the ISG Benchmarks and Annual Targets. MWD will provide CVWD 50,000 AFY of the 100,000 AFY starting in year 46.
- 2009 in 2012. In addition to the maximum transfer amounts IID has also committed that no more than 72,500 AF of reduced inflow to the Salton Sea would result from these additional transfers.
- Up to the amount shown, as agreed upon reduction to IID or CVWD to cover collectively the sum of individual Miscellaneous PPRs, federal reserved rights and decreed rights. This is a reduction that counts towards ISG Benchmarks and Annual Targets.
- For purposes of Subparagraph 8(b)(2)(i) and (ii) and 8(c)(1) and (4) the Secretary will take into account: (i) the satisfaction of necessary conditions to certain transfers (columns 7 and 9) not within IID's control; (ii) the amounts of conserved water as determined, where such amounts may vary (columns 4, 6, 9 and 10); and (iii) with respect to column 7, reductions by IID will be considered in determining IID's compliance regardless of whether the conserved water is diverted into the Colorado River Aqueduct.
- For purposes of Subparagraph 8(c)(1) and (4) the Secretary will take into account: (i) the satisfaction of necessary conditions to certain transfers (columns 15 and 16) not within CVWD's control; and (ii) the amounts of conserved water as determined, where such amounts may vary (column 15).
- All-consumptive use of priorities 1 through 3 plus 14,500 AF of PPRs must be within 25,000 AF of the amount stated.
- Assumes SDCWA does not elect termination in year 35.
- Assumes SDCWA and IID mutually consent to renewal term of 30 years.

Notes:  
Substitute transfers can be made provided the total volume of water to be transferred remains equal or greater than amounts shown consistent with applicable federal approvals.

## INTENTIONALLY CREATED SURPLUS WATER

On December 13, 2007, the Record of Decision, Colorado River Interim Guidelines for Lower Basin Shortages and the Coordinated Operations for Lake Powell and Lake Mead (Interim Guidelines) was signed. Section 3, pages 38-43 of the Interim Guidelines contains the policies and guidelines concerning the categories of, creation, delivery, and accounting for Intentionally Created Surplus (ICS) water.

Prior to the signing of the Interim Guidelines, Reclamation had in 2006, entered into letter agreements with the Imperial Irrigation District and The Metropolitan Water District of Southern California to implement a demonstration program for the development of ICS. The demonstration program covered the creation of ICS water during calendar years 2006 and 2007. "ICS water" in this program referred to a quantity of surplus water that the Secretary may make available for release under Article II(B)(2) of the Consolidated Decree of the Supreme Court of the United States in *Arizona v. California*, 547 U.S. 150 (2006) (Consolidated Decree) as ICS. The demonstration program required the creation of ICS water through extraordinary conservation. Beginning in 2008, the creation and use of ICS water is governed by the Interim Guidelines.

Under the Interim Guidelines four types of ICS water may be created by an approved contractor: Extraordinary Conservation ICS, Tributary Conservation ICS, System Efficiency ICS, and Imported ICS. Also stipulated in the

Interim Guidelines are the limits as to how much ICS water of each type may be created each year and in total, as well as how much ICS water may be delivered by the Secretary each year. The following conditions apply to ICS water:

- 1) During the year of creation, and with the exception of System Efficiency ICS, five percent of the ICS water created will be dedicated to system storage to provide a collective storage benefit for Colorado River users,
- 2) An annual evaporation loss of three percent will be applied to the remaining ICS water beginning the year after its creation,
- 3) Under flood control releases ICS water will be the first released, and
- 4) In accordance with Section 3.C.7 of the Interim Guidelines for the Coordinated Operations of Lake Powell and Lake Mead, if a contractor has an overrun payback obligation, the contractor must repay the overrun payback obligation in full before requesting or receiving delivery of ICS.

The Secretary is responsible for approving plans for the creation of ICS water, allowing for their modification, and developing procedures to account for and verify ICS creation and delivery.

Copies of the demonstration program agreements and the Interim Guidelines can be found in the Significant Documents section of the report.



INTENTIONALLY CREATED SURPLUS BALANCES  
BY STATE, USER, AND TYPE OF ICS  
CALENDAR YEAR 2010

5/12/11

(ACRE-FEET)

State	User	ICS Type	Year	BOY Balance	Creation <sup>1</sup>	IOPP Payback <sup>2</sup>	System Benefit <sup>3</sup>	Evaporation Loss <sup>4</sup>	Delivery	EOY Balance <sup>5</sup>
ARIZONA	CAP	System Efficiency - Warren H. Brock <sup>6</sup>	2010	100,000	0	0	NA	NA	0	100,000
		System Efficiency - YDP Pilot Run <sup>8</sup>	2010	0	2,094					2,094
CALIFORNIA	MWD	Extraordinary Conservation <sup>7</sup>	2010	79,790	100,864	0	5,043	2,394	0	173,217
		System Efficiency - Warren H. Brock <sup>6</sup>	2010	66,000	0	0	NA	NA		66,000
		System Efficiency - YDP Pilot Run <sup>8</sup>	2010	0	16,750					16,750
	IID	Extraordinary Conservation	2010	11,400	0			186	5,191	6,023
NEVADA	SNWA	Tributary Conservation converted to Extraordinary Conservation <sup>9</sup>	2010	20,410	0	0	0	612	0	19,798
		Tributary Conservation	2010	0	30,070	0	1,504	0	0	28,566
		Imported	2010	0	841	0	42	0	0	799
		System Efficiency - Warren H. Brock <sup>6</sup>	2010	400,000	0	0	NA	NA	0	400,000
		System Efficiency - YDP Pilot Run <sup>8</sup>	2010	0	2,094					2,094

**Note: All 2010 ICS values displayed are provisional until verified by Reclamation.**

**Total ICS stored in Lake Mead: EOY 2010      815,341**

**Footnotes:**

1. The amount of ICS water created by the contractor during the calendar year. Unless noted, all current year values displayed in this column are provisional until verified by Reclamation.
2. In accordance with Section 3.C.7 of the Interim Guidelines for the Coordinated Operations of Lake Powell and Lake Mead, if a contractor has an overrun payback obligation, the contractor must repay the overrun payback obligation in full before requesting or receiving delivery of ICS. In 2010, the contractor's ICS account shall be reduced by the full overrun payback balance before the amount of ICS credits available to the contractor is calculated.
3. In accordance with Section 3.B.2. of the Interim Guidelines, there shall be a one-time deduction of five percent (5%) from the amount of ICS in the year of creation. This system assessment shall result in additional system water in storage in Lake Mead.
4. The evaporation loss factor is 3.0 percent, per the Interim Guidelines.
5. The EOY balance of ICS water including creation and reductions taking place in the accounting year.
6. The Warren H. Brock Reservoir became operational in 2010. Per the funding agreement of December 13, 2007, CAWCD and MWD are credited with 100,000 acre-feet each of System Efficiency ICS, and SNWA is credited with 400,000 acre-feet.
7. In 2010, MWD was approved to create up to 133,000 acre-feet of Extraordinary Conservation ICS under an approved ICS plan. The Colorado River Accounting and Water Use Report for 2010 credits MWD with the creation of 100,864 acre-feet of Extraordinary Conservation ICS. Also, in 2010, IID delivered 46,546 acre-feet of Colorado River water to the Salton Sea with a stated intention to store the water for use for Salton Sea mitigation requirements in 2011 and half of 2012. The appropriate accounting for the 46,546 acre-feet is under review by Reclamation and will be reflected in the Colorado River Accounting and Water Use Report for 2011.
8. CAP, MWD, and SNWA have developed System Efficiency (SE) credit through funding the operation of the YDP for a period of up to 18 months. ICS credit will be applied to each of the ICS accounts in proportion to each entity's funding percentage upon the production of water by the YDP. In 2010, total SE ICS credits for YDP are 20,938 acre-feet.
9. In 2009, SNWA stored 20,410 acre-feet of Tributary Conservation ICS in Lake Mead. In accordance with Section 3.A.2 of the Interim Guidelines, this amount was converted to Extraordinary Conservation ICS at the beginning of 2010 and assessed an evaporative loss in accordance with Section 3.B.7 of the Interim Guidelines.

## **DOCUMENTS AND LETTERS SIGNIFICANT TO THE DELIVERY OF AND ACCOUNTING FOR THE USE OF COLORADO RIVER WATER IN CY 2010**

These documents provide the reader an opportunity to read the agreements, letters, regulations and operating plans that impacted Reclamation's delivery of Colorado River water during calendar year 2010.

The compact disc (CD) located in the pocket on the back cover of this report contains the documents significant to the delivery of Colorado River water in 2010. These electronically filed documents are in searchable Acrobat® (PDF) format. The list below provides a brief description of each significant document's contents and the file name under which that document may be found on the CD. The file names are printed exactly as they appear on the CD. The acronyms used below are defined in the Acronyms and Abbreviated Terms on page one of this report. Anyone desiring additional water accounting information is encouraged to log on to the following website, where all previous water accounting reports can be viewed and complete PDF files may be downloaded at: [www.usbr.gov/lc/region/g4000/wtracct.html](http://www.usbr.gov/lc/region/g4000/wtracct.html).

### **RECORDS OF DECISION:**

The Record of Decision for Colorado River Interim Guidelines for Lower Basin Shortages and the Coordinated Operations for Lake Powell and Lake Mead.

- CD file name: 2007 ROD Interim Guidelines-Shortages-Coordinated Operations.pdf

### **REPORTS:**

2010 Annual Operating Plan Executive Summary

Outlines the criteria under which the Colorado River will be operated during CY 2010 considering current and anticipated conditions.

- CD file name: 2010 Annual Operating Plan Executive Summary.pdf

### **DETERMINATIONS:**

Interim Determination for the Coachella Canal Lining Project

The Secretary's Interim Determination for the amount of water conserved and the amount of water made available for allocation as a result of the Coachella Canal Lining Project.

- CD file name: CCLP Lining Interim Determination.pdf

Interim Determination for the All-American Canal Lining Project

The Secretary's Interim Determination for the amount of water conserved and the amount of water made available for allocation as a result the All-American Canal Lining Project.

- CD file name: AAC Lining Interim Determination.pdf

## **DOCUMENTS AND LETTERS SIGNIFICANT TO THE DELIVERY OF AND ACCOUNTING FOR THE USE OF COLORADO RIVER WATER IN CY 2010**

### **PROGRAMS/PROCESSES:**

#### **SYSTEM CONSERVATION:**

Demonstration Program for System Conservation of Colorado River Water

This is an agreement between YMIDD and Reclamation, to conserve 3,705 acre-feet of Colorado River water through December 31, 2010, through the voluntary fallowing of 529.24 acres of farmland within YMIDD boundaries.

- CD file name: 2010 BR-YMIDD System Conservation Agreement.pdf

#### **INTENTIONALLY CREATED SURPLUS:**

Verification of SNWA's Tributary Conservation Intentionally Created Surplus for the Muddy and Virgin Rivers for calendar year 2008

- CD file name: SNWA 2008 ICS Verification.pdf

Verification of SNWA's Tributary Conservation Intentionally Created Surplus for the Muddy and Virgin Rivers for calendar year 2009

- CD file name: SNWA 2009 ICS Verification.pdf

SNWA's Tributary Conservation ICS and Imported ICS plans of creation for calendar year 2010

These are plans for the creation of Muddy and Virgin Rivers Tributary Conservation ICS.

- CD file name: SNWA ICS plans for 2010.pdf

Reclamation's approval of SNWA's Tributary Conservation and Imported ICS plans for calendar year 2010

- CD file name: SNWA 2010 ICS approval.pdf

MWD's Extraordinary Conservation ICS certification report for calendar year 2009

- CD file name: MWD 2009 ICS Certification.pdf

Reclamation's letter verifying MWD's Extraordinary Conservation ICS creation for calendar year 2009

- CD file name: MWD 2009 ICS Verification.pdf

MWD's Extraordinary Conservation ICS plan for calendar year 2010

- CD file name: MWD 2010 ICS plan.pdf

MWD's Revised Extraordinary Conservation ICS plan for calendar year 2010

- CD file name: MWD 2010 revised ICS plan.pdf

## **DOCUMENTS AND LETTERS SIGNIFICANT TO THE DELIVERY OF AND ACCOUNTING FOR THE USE OF COLORADO RIVER WATER IN CY 2010**

### **INTENTIONALLY CREATED SURPLUS (continued):**

Reclamation's approval of MWD's Revised Extraordinary Conservation ICS plan for calendar year 2010

- CD file name: MWD's 2010 Revised Extraordinary Conservation ICS Approval.pdf

Reclamation's letter verifying IID's Extraordinary Conservation ICS creation for calendar year 2009

- CD file name: IID 2009 ICS Verification.pdf

IID's Extraordinary Conservation ICS plan for calendar year 2010

- CD file name: IID 2010 Extraordinary Conservation ICS plan.pdf

Reclamation's approval of IID's Extraordinary Conservation ICS plan for calendar year 2010

- CD file name: IID 2010 ICS plan approval

System Efficiency ICS created in 2010 through a pilot run of the Yuma Desalting Plant funded by and for the benefit of MWD, SNWA, and CAWCD

- CD file name: Pilot Run report.pdf

IBWC concurrence of the amount or arranged water delivered by Reclamation in 2010.

- 2010 IBWC-BR amount contributed by US concurrence

### **INADVERTENT OVERRUN AND PAYBACKS:**

CAWCD overrun notice. Formal notification to CAWCD for an inadvertent overrun incurred in calendar year 2009

- CD file name: 2009 CAWCD overrun notice

CAWCD IOPP Payback plan for an inadvertent overrun in calendar year 2009

- CD file name: CAWCD 2011 Inadvertent Overrun Payback Plan.pdf

Reclamation's approval of CAWCD's IOPP Payback plan for an inadvertent overrun in calendar year 2009

- CD file name: CAWCD 2011 Payback Plan Approval.pdf

Gila Monster Farms 2010 revised payback plan. A revised plan for full repayment of inadvertent overruns incurred in 2007

- CD file name: GMF 2010 revised payback plan.pdf

Gila Monster Farms 2010 revised plan approval. Reclamation's approval of Gila Monster Farms revised payback plan to fully extinguish Gila Monster Farms 2007 payback obligation

- CD file name: GMF 2010 IOPP revised approval.pdf

## **DOCUMENTS AND LETTERS SIGNIFICANT TO THE DELIVERY OF AND ACCOUNTING FOR THE USE OF COLORADO RIVER WATER IN CY 2010**

### **INADVERTENT OVERRUN AND PAYBACKS (continued):**

Reclamation's verification letter confirming the amount of water conserved for payback in 2010. This letter confirms that Gila Monster Farm's IOPP obligation is fully extinguished.

- CD file name: GMF 2010 IOPP payback verification.pdf

Fort Mojave Indian Tribe in California IOPP payback plan for inadvertent overruns in 2007 and 2008

- CD file name: FMIT 2010 IOPP Payback Plan.pdf

Fort Mojave Indian Tribe in California IOPP payback approval. Reclamation's approval of the Fort Mojave Tribe's IOPP payback plan.

- CD file name: FMIT 2010 IOPP Payback Plan Approval.pdf

Fort Mojave Indian Tribe in California—Reclamation's letter requesting a revised IOPP payback plan

- CD file name: FMIT 2010 IOPP Request for Revised Payback Plan.pdf

Fort Mojave Indian Tribe in California revised IOPP payback plan

- CD file name: FMIT 2010 Revised IOPP Payback Plan.pdf

Fort Mojave Indian Tribe in California revised IOPP payback plan approval. Reclamation's letter approving the Fort Mojave Indian Tribes revised 2010 IOPP payback plan

- CD file name: FMIT 2010 Revised IOPP Payback Plan Approval.pdf

Reclamation's verification letter confirming the amount of water conserved by the Fort Mojave Tribe for payback in 2010

- CD file name: FMIT 2010 IOPP payback verification.pdf

### **INTERSTATE WATER BANKING:**

Arizona Water Banking Authority (AWBA) water banking verification for calendar year 2009. A letter from AWBA verifying the amount of water stored in Arizona for the benefit of SNWA.

- CD file name: AWBA 2009 water banking verification.pdf

AWBA anticipated long-term storage credits to be developed for SNWA in calendar year 2010

- CD file name: AWBA—SNWA 2010 Interstate Storage.pdf

MWD water banking summary. A letter from MWD verifying the final accounting for the SNWA Interstate Account administered by MWD through calendar year 2010.

- CD file name: MWD-SNWA 2010 Water Banking Summary.pdf

## **DOCUMENTS AND LETTERS SIGNIFICANT TO THE DELIVERY OF AND ACCOUNTING FOR THE USE OF COLORADO RIVER WATER IN CY 2010**

### **INTERSTATE WATER BANKING (continued):**

AWBA 2010 ICUA certification for calendar year 2009. A letter from AWBA certifying the amount of ICUA developed in 2009 for the benefit of MWD.

- CD file name: AWBA 2009 certification of ICUA for MWD.pdf

AWBA 2010 ICUA recovery and development estimate. A letter from AWBA estimating the amount of ICUA that would be recovered and developed in 2010 for MWD.

- CD file name: AWBA 2010 ICUA development.pdf

### **CRWDA:**

Coachella Canal Lining Project Mitigation Water. A letter from CVWD indicating how much environmental mitigation water was used leaving the remaining water available for transfer to the SDCWA.

- CD file name: 2010 Coachella Canal Mitigation Water.pdf

Coachella Canal Lining Project Mitigation Water. A letter from Reclamation to CVWD acknowledging the amount of mitigation water used and the amount of water available to SDCWA.

- CD file name: 2010 CVWD mitigation water

Agreement for Delivery of Exchange Water at the Whitewater Service Connections. An agreement between CVWD and MWD to have MWD deliver 10,000 acre-feet of Exchange Water to the Whitewater Service Connections in calendar year 2010.

- CD file name: 2010 MWD—CVWD exchange agreement

CVWD revised water order for calendar year 2010.

- CD File name: 2010 CVWD revised diversion request

### **WATER ACCOUNTING:**

USGS diversion estimate methodology. A description on how irrigation water is accounted for by the USGS for areas where estimates or diversion are required.

- CD file name: USGS Diversion Estimate Methodology.pdf

Maps showing the locations of the wells and river pumps reported by the USGS, and presented in the supplemental tabulations for Arizona and California.

- CD file name: USGS Pump Maps

## **DOCUMENTS AND LETTERS SIGNIFICANT TO THE DELIVERY OF AND ACCOUNTING FOR THE USE OF COLORADO RIVER WATER IN CY 2010**

### **WATER ACCOUNTING (continued):**

Reclamation's Lower Colorado Region Regional Director's letter regarding a footnote concerning 2010 deliveries to the Salton Sea recorded in the 2010 water accounting report

- CD file name: Footnote for 2010 Water Accounting Report.pdf

A letter from SNWA and MWD expressing their desire to leave any Nevada unused Colorado River apportionment in Lake Mead pursuant to Article II(B)(6) of the Consolidated decree.

- CD file name: SNWA-MWD letter to USBR urging leave NV unused in Mead.pdf