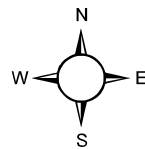
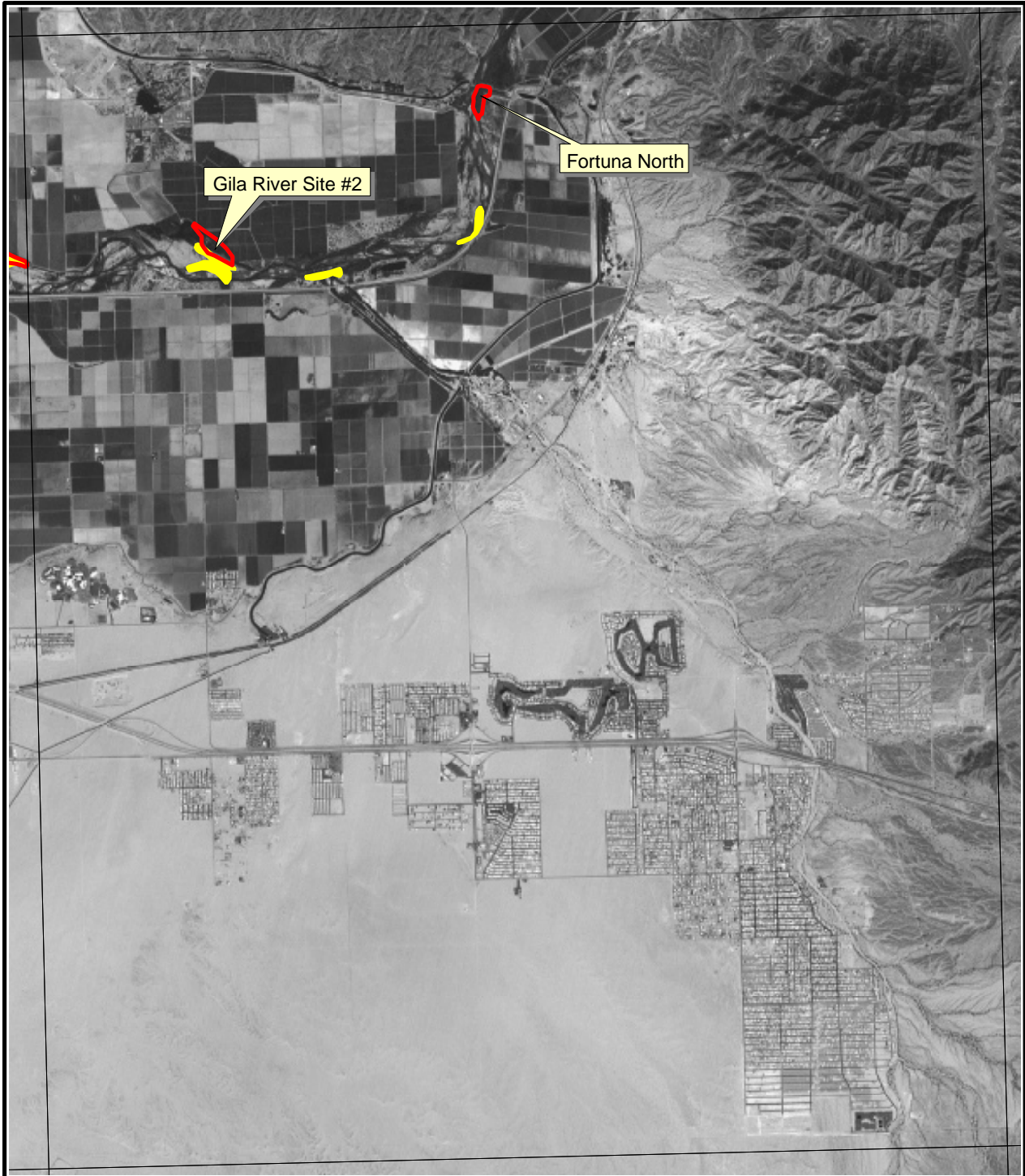


- Historically Occupied
- 2003 Surveyed/Not Occupied
- 2003 Surveyed/Occupied
- 2003 Surveys Discontinued



Yuma East



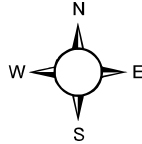


Gila River Site #2

Fortuna North



- Historically Occupied
- 2003 Surveyed/Not Occupied
- 2003 Surveyed/Occupied



Fortuna

1000 0 1000 Meters

