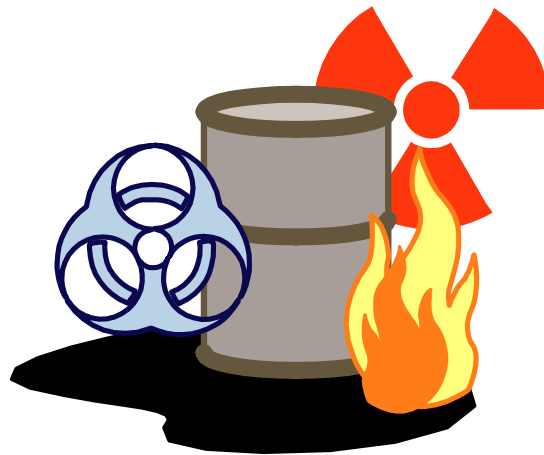
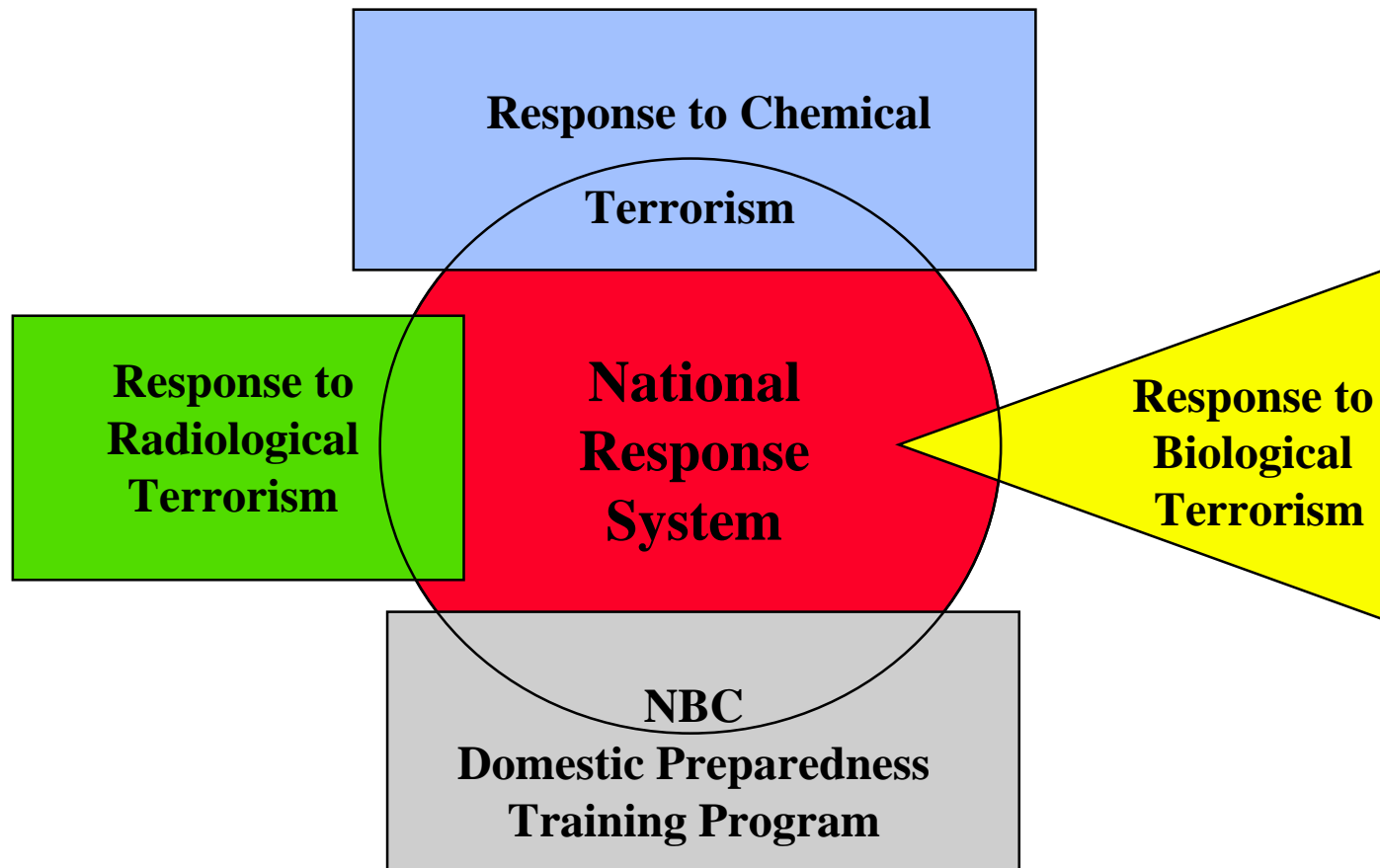
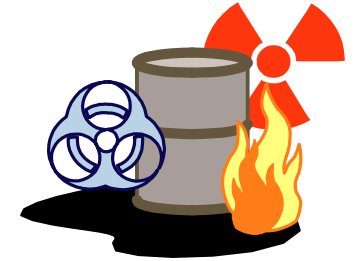


# EPA's Involvement in Counter-Terrorism

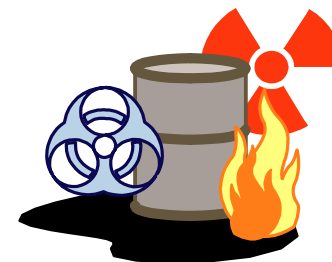


November 1997

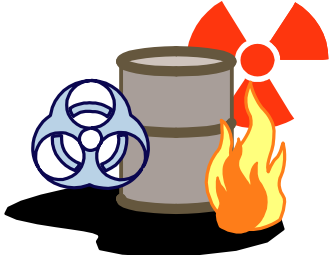
# Introduction: EPA's Involvement in Counter-Terrorism: The OSC's Role



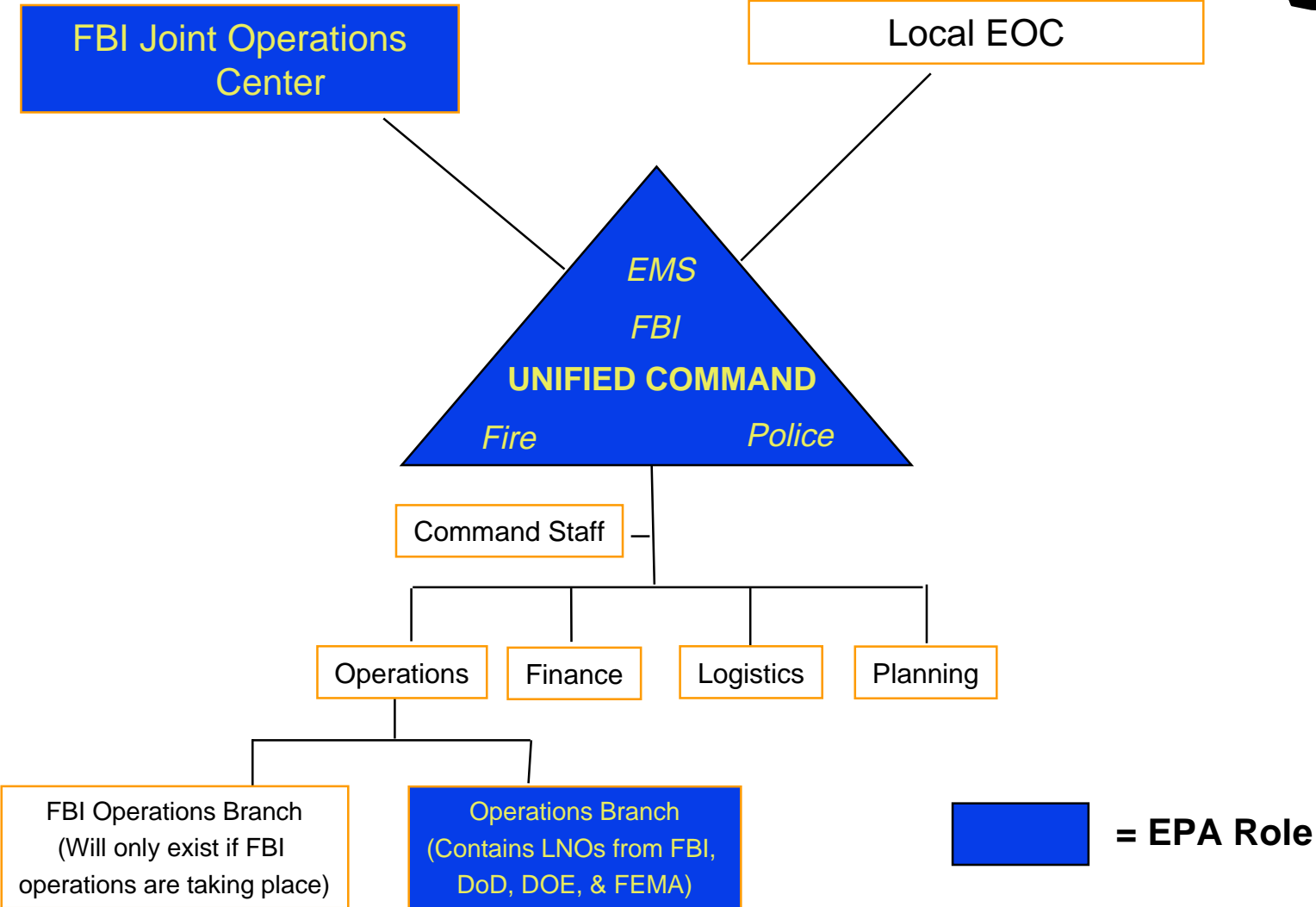
# Crisis Management: General OSC Role

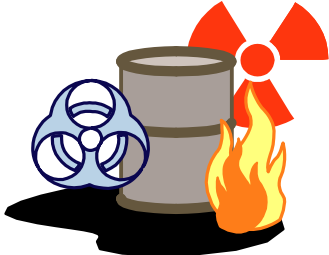


- ◆ Provide technical advice to the FBI On-Scene Commander.
- ◆ Assist in the conduct of scientific and technical assessments.
- ◆ Make recommendations for the deployment of response assets.
- ◆ Assist the FBI in working with state and local responders in the ICS/UC.

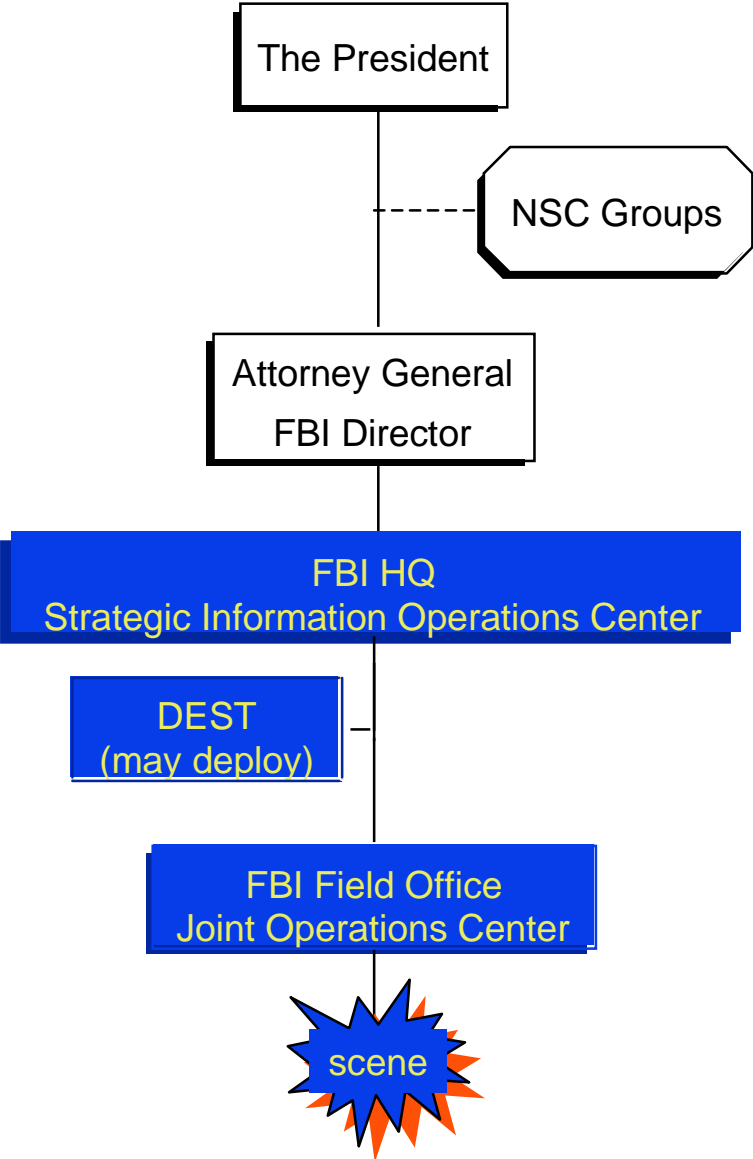


# At the Site: ICS/UC

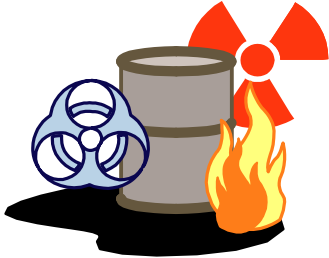




# Crisis Management Structures

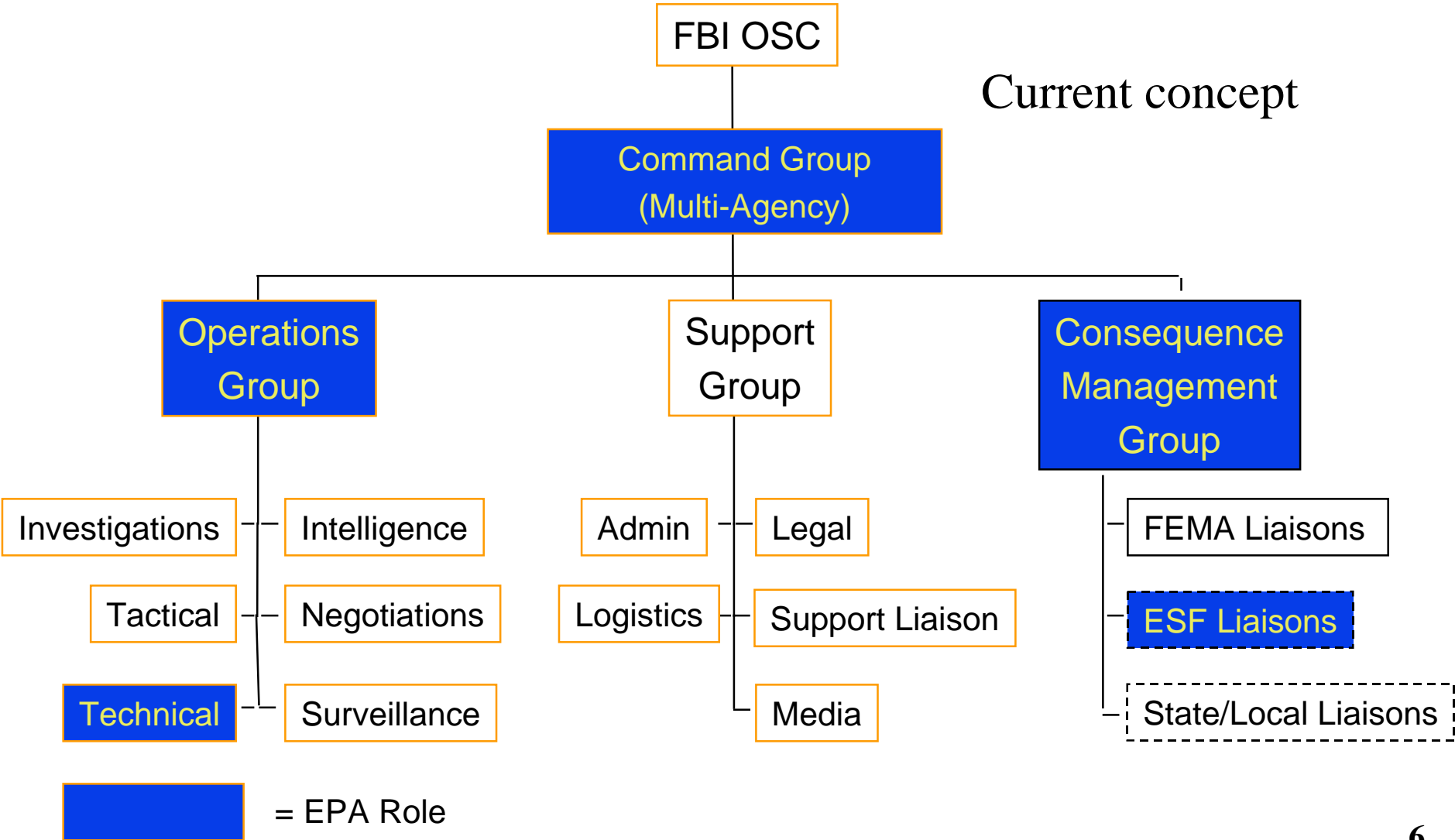


 = EPA Role

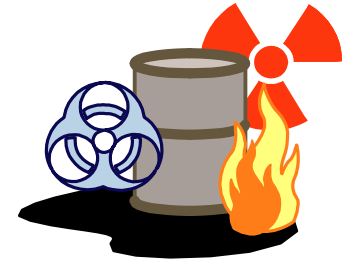


# Joint Operations Center

Current concept

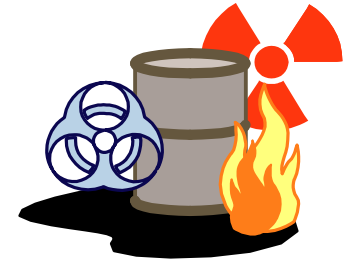


# Consequence Management: OSC Role

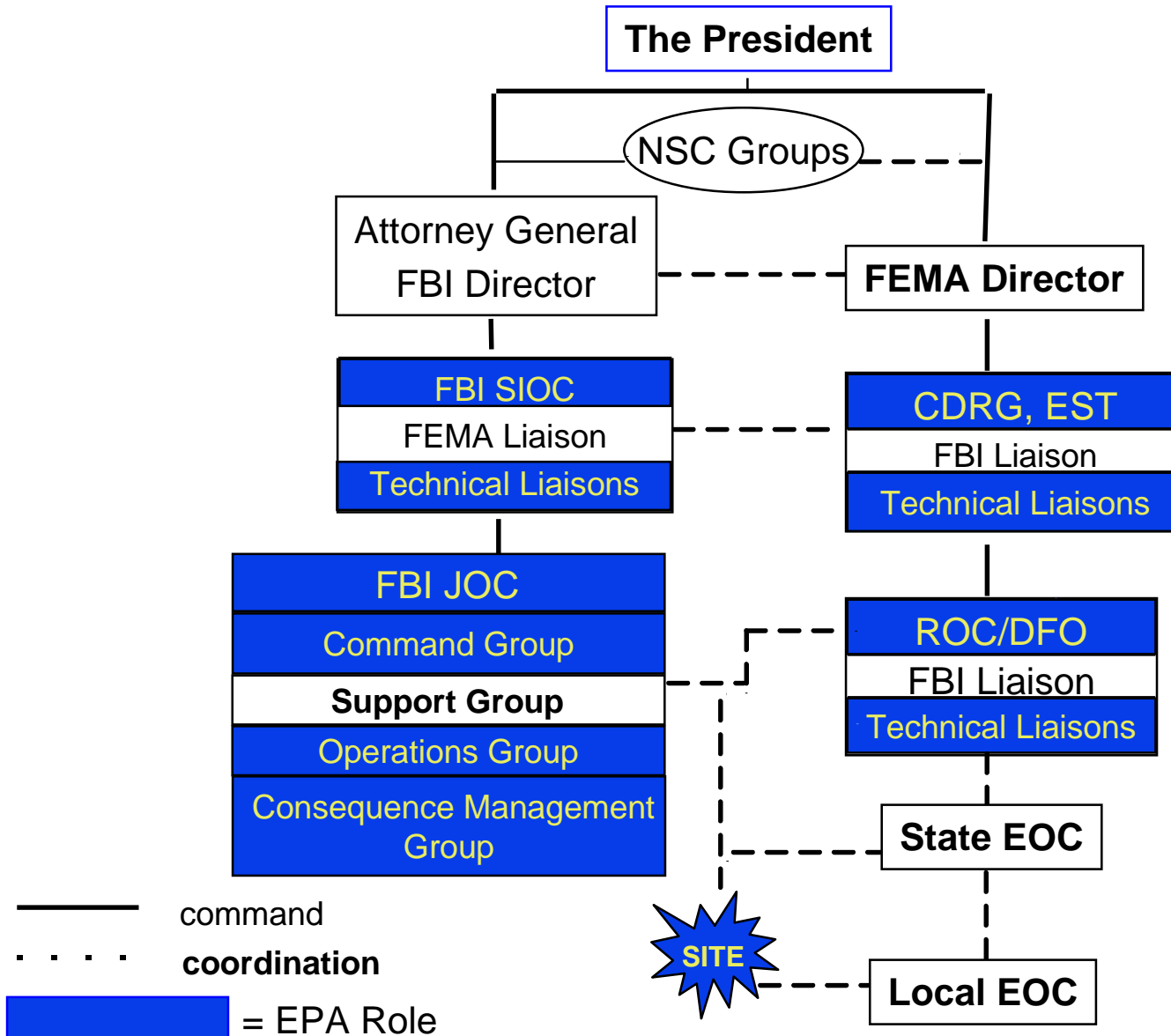


- ◆ **FRP activation - ESF #10**
  - **EPA, as primary agency for ESF #10, is responsible for protecting human health and welfare and environment**
  - **ESF #10 performance of activities is not expected to change significantly.**
  - **But coordination mechanisms will change**

# Coordination: C<sup>R</sup>M and C<sup>O</sup>M



Current concept

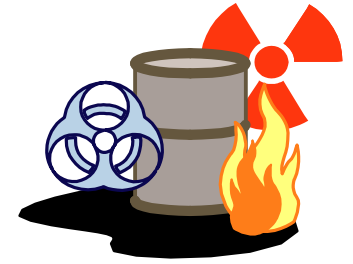




**How will this work?**

**Good question.**

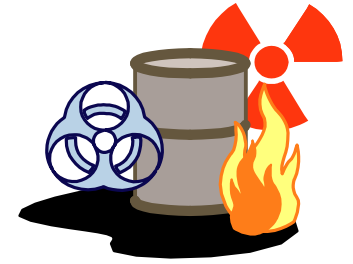
# **Incident Has Occurred (Crisis Management - Initial Actions**



- ◆ **Notify FBI Special Agent in Charge/Command Post.**
- ◆ **Notify FBI HQ - notifies key agencies.**
- ◆ **Conduct initial agent identification.**
- ◆ **Provide technical support to Local Incident Commander via conference call with key agencies.**
- ◆ **Activate liaisons to Strategic Information Operations Center (SIOC).**

# **Incident Has Occurred**

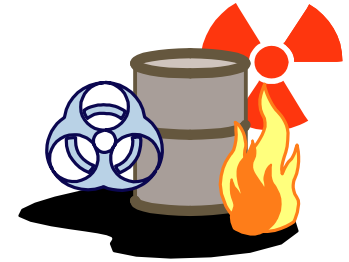
**(Consequence Management - Initial Actions)**



- ◆ **Notify FEMA Key Staff.**
- ◆ **Convene CDRG as required.**
- ◆ **Staff/Deploy JOC Consequence Management Group.**
- ◆ **Activate ROC and EST.**

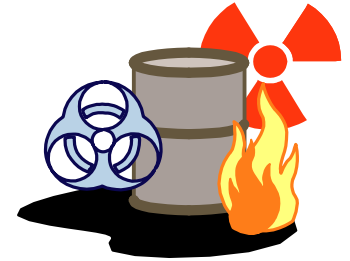
# Incident Has Occurred

(Consequence Management - Initial Actions)  
(Cont'd)



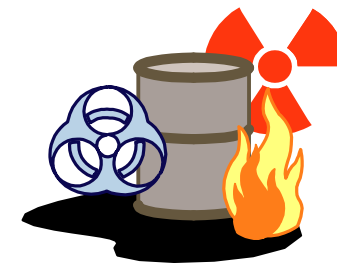
- ◆ Deploy liaison to FBI Strategic Intelligence Operations Center (SIOC).
- ◆ Deploy Emergency Response Team - Advance Element (ERT-A) to State EOC.
- ◆ Activate Emergency Response Team.
- ◆ FEMA directs further actions using normal procedures.

# NRS Response



- ◆ **Be aware of the potential for criminal/terrorist causes**
- ◆ **Contact NEIC for assistance**
- ◆ **Contact the FBI Special Agent in Charge (SAC) with suspicions**

# Issues Concerning OSCs (Conclusion)



- ◆ **Interaction with the FBI**
  - **Utilize your NCP authority within the guidelines provided in the Terrorism Incident Annex in the FRP**
  - **Be involved as EPA works with FBI and other agencies in development of the CONPLAN**
  - **Maintain a good working relationship with local first responders**
  - **Be proactive: Contact your FBI SAC and Regional FEMA offices regarding potential incidents**

**QUESTIONS?**

**COMMENTS?**

