

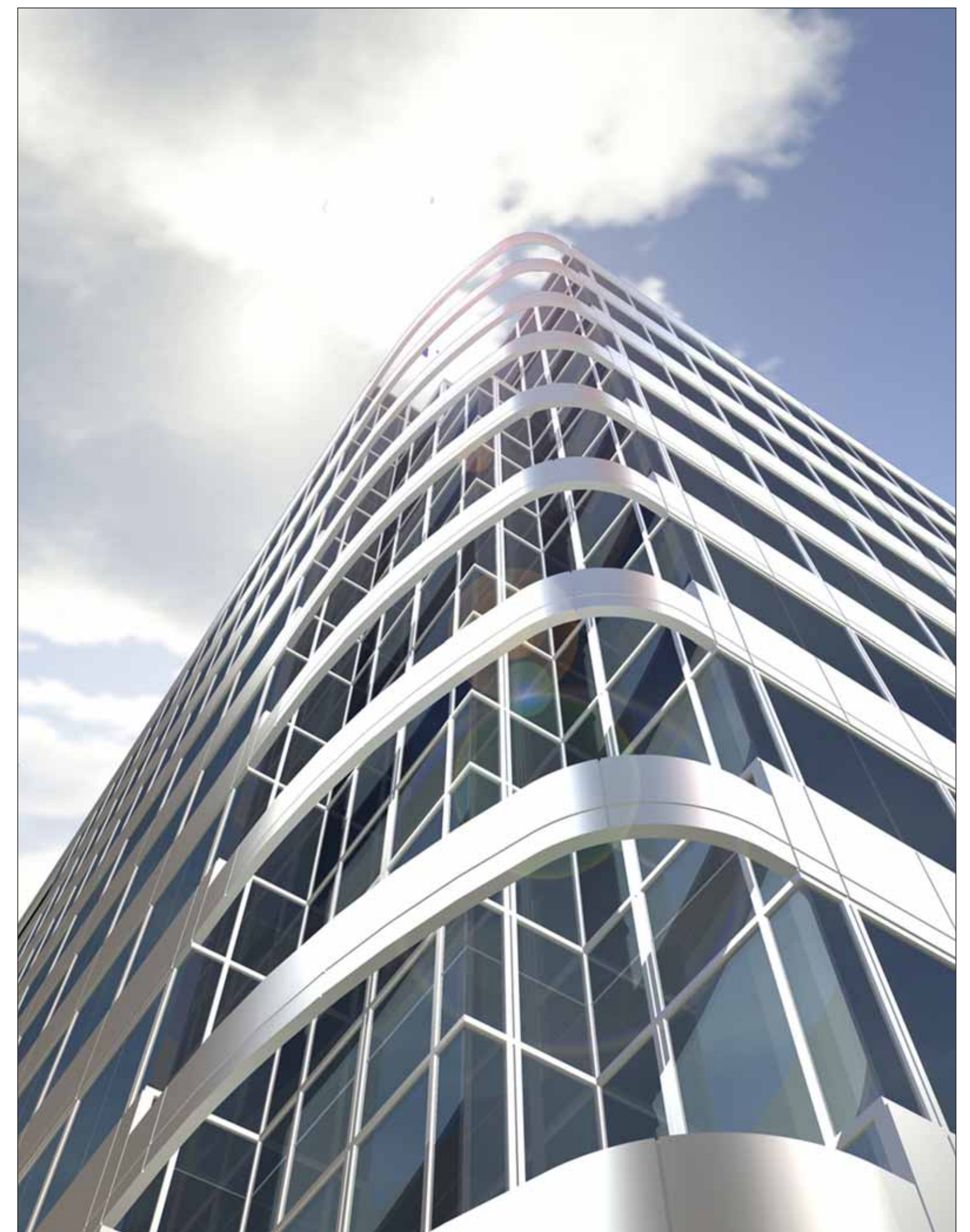
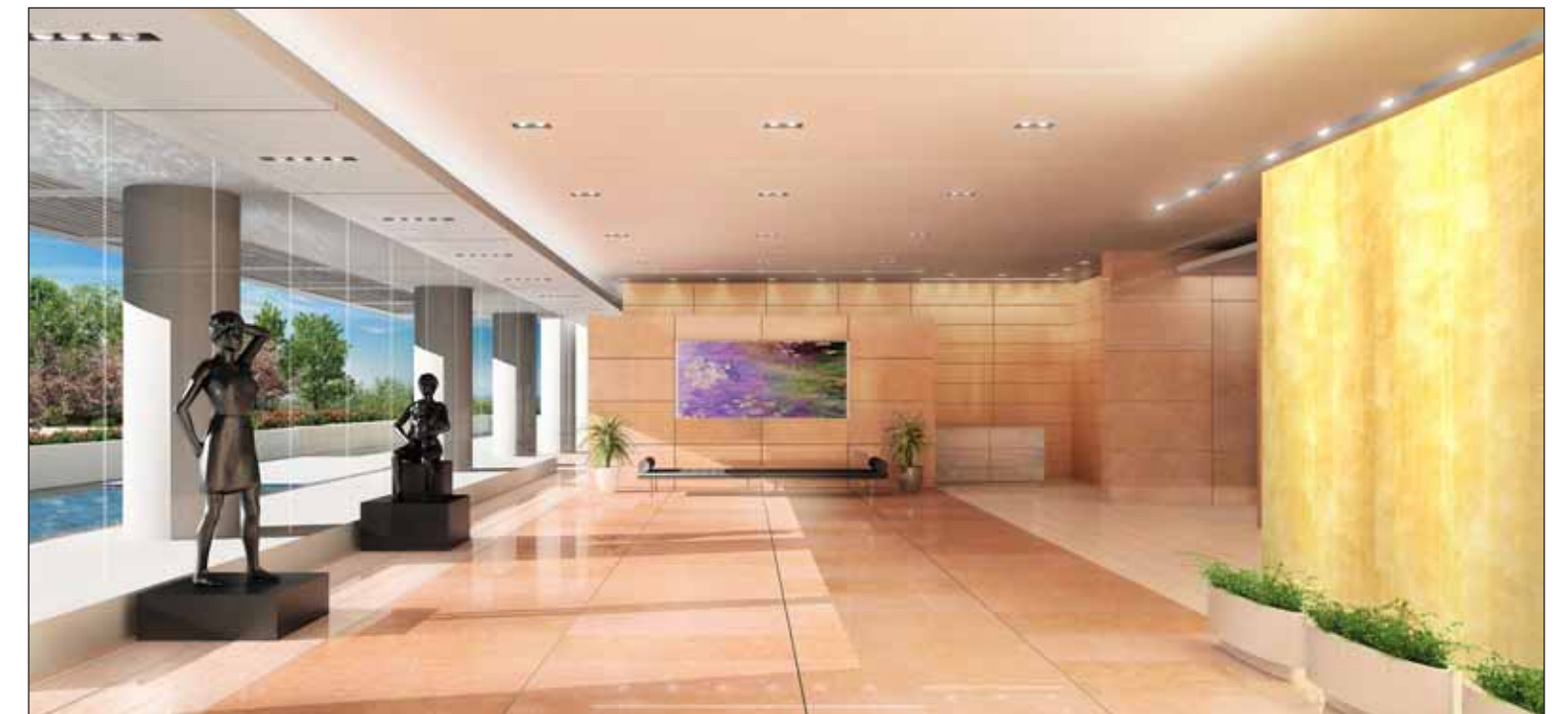
2000 TOWER OAKS BOULEVARD

Rockville, Maryland

KGD

KISHIMOTO.GORDON.DALAYA PC
Architects
www.kgdarchitecture.com

THE TOWER COMPANIES & LERNER ENTERPRISES
Co-developers
www.toweroaks.com



■ Energy use intensity (kBtu/sf/yr)	207.5 kBtu/sf/yr
■ Percent CO ₂ reduction	42%
■ ENERGY STAR rating	87
■ Energy savings (kBtu, from average building)	28,929,281 kBtu
■ CO ₂ savings (tons, from average building)	1,394.2 tons CO ₂

- High efficiency series-counterflow chilled water HVAC system
- Low temperature air and water systems
- Economizer technology
- ECM "Smart Motor" technology
- Filtration monitoring
- N-slot air distribution technology
- High efficiency lighting systems

■ Total annual energy cost	\$488,728
■ Space type	Office
■ Total gross floor area	200,000 SF