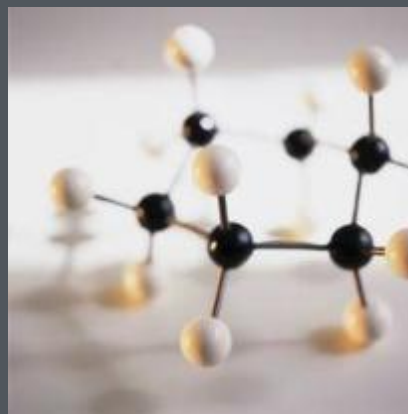


Conversion Technologies for Advanced Biofuels – Carbohydrates Production

U.S. DEPARTMENT OF
ENERGY

Energy Efficiency &
Renewable Energy



Report-Out Webinar
February 9, 2012

Mike Ladisch, Ph.D.
Purdue University

Michael R. Ladisch

Distinguished Professor and Director
Department of Agricultural and Biological Engineering
Laboratory of Renewable Resources Engineering

<http://engineering.purdue.edu/LORRE>

CTO, Mascoma Corporation

<http://www.mascoma.com>



1978 – present, Professor at Purdue University; 2007 – present, CTO Mascoma Corporation

B.S.ChE, Chemical Engineer, Drexel University (1973)
MS ChE (1974); Ph.D. ChE (1977), Purdue University.

Elected to National Academy of Engineering, 1999.

35 years experience in research in biofuels, renewable resources, and biotechnology.

➤ **Feedstock Variability and Preprocessing**

- Uniform feedstock formats – impacts on multiple pretreatment processes/severities
- Feedstock impacts on biological/catalytic conversion (inorganics, extractives, lignin)
- Feedstock variability impacts on pretreatment process/severity requirements

➤ **Pretreatment**

- Fundamentals of pretreatment chemistry still not well characterized
- Fractionation may be more important for HC processes – process development
 - High concentration, solids-free sugar streams desired
- Cost benefit of more/less severe pretreatment conditions not well understood
 - Catalytic HC process may utilize broader range of soluble intermediates

➤ **Enzyme Science & Intermediate Conversion**

- Better understanding of sources and mechanism of hydrolytic enzymes is needed.
- Great need for high sugar concentrations in HC processes
- Integrated pretreatment/enz. hyd. process development in HC processes
- Lignin effects (enzyme types, solubilization, inhibitory compounds)
- Inhibitor effects on HC-producing organisms/catalysts

➤ **Separations**

- Anticipate a greater need for separations in HC processes
 - Intermediates concentration/clean-up and product recovery
- Low sugar concentration hydrolyzates require extensive purification/clean-up
- Sugar concentration processes are highly capital/energy intensive
- Solids complicate sugar concentration and product recovery schemes.

➤ Feedstocks

- Mitigate inorganics and extractives
- Design modified feedstock to reduce recalcitrance
- Investigate microbial pre-processing for efficient downstream conversion
- Densification for reduced transport costs

➤ Pretreatment

- Multiple options for different feedstocks and HC production pathways
- Specific focus on fractionation for high-concentration intermediates production

➤ Enzymatic Conversion

- Investigate utility of lignin degrading enzymes
- Design enzyme that resist inhibitors generated from pretreatment
- R&D on enzyme action during mild pretreatment (thermal and pH stability)

➤ Separations

- High-solids separations and *in-situ* phase separations
- Inhibitor removal (low-fouling membranes and mesoporous structures)
- C5/C6 sugar separation/concentration

➤ **Feedstock Variability and Preprocessing**

- Accepting diverse feedstocks with varying moisture contents
- Identifying desired traits for different feedstocks relevant to different conversion processes
- Removing only the desired portion of biomass from the field

➤ **Processing**

- Product selectivity and control are largely dependent upon individual process specifications.
- Strongly hydrogen-bonded biomolecules require severe conditions to digest and corrosion and material handling issues arise when using strong acids and bases.
- Scale-up is not straightforward, as the majority of non-enzymatic sugar production routes are unproven at anything above demonstration scale

➤ **Separations**

- Developing separation capabilities for removing hydrophobic lignin from hydrophilic sugar stream and for removing co-solvents from biomass hydrolyzate streams

- **Focus research and development on overcoming recalcitrance**
- **Develop efficient biomechanical methods for processing raw biomass to obtain uniform, non-recalcitrant, easily densified products**
- **Design processes to minimize sugar destabilization/degradation during acid hydrolysis**
- **Perform pilot scale R&D on separating water, acids and bases from biomass hydrolyzates at high solids loading (>20% w/w) with and without solvent**
- **Perform modeling to assess the impact of impurity build-up at commercial scale**
- **Develop better analytical methods for evaluating feedstocks and contaminants in sugar/product streams**

➤ **Feedstocks**

- Mitigate inorganics (ash, metals salts, etc.)
- Pre-processing/densification/formatting and feedstock hubs

➤ **Catalysis (biocatalysis)**

- Robustness to hydrolyzates; aromatics formation, phenolics
- Fundamental studies to ascertain why glycans and C6 oligomers decrease cellulase activity
- Design new hydrolytic enzymes to work synergistically in mild pretreatment conditions

➤ **Separations**

- Post pretreatment, and post hydrolysis separation of sugars from solids for effective production concentration
- Design integrated processes that require minimal washing of solids

➤ **Techno-economic and life cycle analyses**

- Design rigorous models that include unique needs of hydrocarbon fuel processes; re-tasking of existing infrastructure for HC fuels production (pulp mills, corn ethanol plants, etc.)

➤ **Feedstocks**

- Mitigate inorganics (ash, metals salts, etc.)
- Pre-processing/densification/formatting and feedstock hubs

➤ **Catalysis & Biocatalysis**

- Design 1-step catalytic systems for sugar production (co/counter current fractionation)
- Fundamental studies to ascertain why glycans and C6 oligomers decrease cellulase activity
- Design new hydrolytic enzymes to work synergistically in mild pretreatment conditions

➤ **Separations**

- Post pretreatment, and post hydrolysis separation of sugars from solids for effective production concentration
- Design integrated processes that require minimal washing of solids

➤ **Techno-economic and life cycle analyses**

- Design rigorous models that include unique needs of hydrocarbon fuel processes; re-tasking of existing infrastructure for HC fuels production (pulp mills, corn ethanol plants)₉