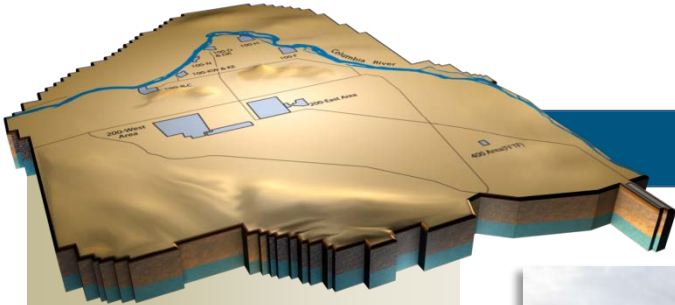


# Section F

## Nuclear Facility D&D, River Corridor (RL-0041)

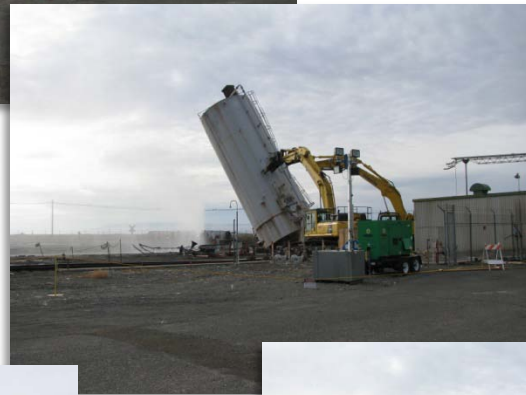


### Monthly Performance Report

K. L. Kehler  
Vice President and  
Project Manager for  
D&D Project

D. L. Foss  
Vice President and  
Project Manager for  
Soil and Groundwater  
Remediation Project

November 2009  
DOE/RL-2008-69, Rev. 33  
Contract DE-AC06-08RL14788  
Deliverable C.3.1.3.1 - 1



**Demolition of Bauxite Tank next to 183.1KW Facility**

## PROJECT SUMMARY

### **American Recovery and Reinvestment Act (ARRA)**

Work continued in the 100K Area with completing demolition and loadout of Mobile Offices MO048 and MO969. Workers continued characterization of 115KE, 116KE, and 117KE; completed waste characterization at 183.1KW, 183.2KW, 183.3KW and 183.7KW; and continued final disposition characterization at 183.2KW, 183.3KW and 183.7KW. Cold and dark activities continued on 115KE, 116KE, and 117KE; and completed on 183.1KW, 183.2KW, 183.3KW and 183.7KW.

Continued asbestos abatement at 183.7KW.

Initiated asbestos set-up in the 1706KE/KER below-grade, then suspended work due to structural integrity concerns.

Continued waste site remediation of 100-K-56 and 100-K-42 Remove, Treat, and Dispose (RTD) sites.

Continued loading out the UPR-100-K-1 soil. Work was paused in the under-basin work and the work crew shifted to pipeline remediation for waste sites 100-K-47, 100-K-56, and 100-K-3.

The bauxite tank waste site outside the 183.1KW facility was demolished.

Ongoing work on the project includes removal of debris from the K West Basin as well as planning and design for 100K Area River Water Isolation, Electrical Power Isolation, and the K West Basin Airborne Contamination Remediation projects to support accelerated cleanup at the 100K Area.

Work continued on 105KE Reactor Disposition preliminary design, project definition and regulatory documentation. Initiated 105KE cold and dark activities. Initiated field work for characterization of the reactor core, process tube, and port surveying to begin early January and February for core boring activities.

### **Base**

Workers at the 182K Water Reservoir Pump House began characterization, asbestos abatement, and continued cold and dark activities.

## TARGET ZERO PERFORMANCE

	CM Quantity	FYTD Quantity	Comment
Days Away, Restricted or Transferred	0	0	N/A
Total Recordable Injuries	1	1	<b>11/19/09</b> - a D4 worker struck head with a T post driver while driving T post. The employee received a scalp laceration that was treated with glue and was returned to work with restrictions of no work in areas with potential for contamination to the head. (20568)
First Aid Cases	3	5	<p><b>11/18/09</b> - a D4 employee reported a mild back twinge from moving a portable staircase. The employee was returned to work with no restrictions. (20564)</p> <p><b>11/30/09</b> - a D&amp;D worker was ascending stairs and experienced a slight twinge in left knee. Worker was taken to AMH the following day and released without restrictions. (20579)</p> <p><b>11/30/09</b> - a NCO ripped a fingernail while removing the battery pack from a respirator. Employee was taken to AMH for evaluation and returned to work with no restrictions. (20580)</p>
Near- Misses	0	0	N/A

## KEY ACCOMPLISHMENTS

### 41.02 RC PRC River Zone Environmental

#### ARRA

- Completed demolition of Mobile Offices MO048 and MO969.
- Continued design of 105KE Reactor Disposition.
- Continued project definition of 105KE Reactor Disposition.
- Continued pre-characterization work of 105KE Reactor Disposition.
- Continued characterization of 115KE, 116KE, and 117KE.
- Continued final disposition characterization at 183.2KW, 183.3KW, and 183.7KW.
- Completed waste characterization of 183.1KW, 183.3KW, and 183.7KW.
- Continued cold and dark at 115KE, 116KE, and 117KE.
- Completed cold and dark at 183.7KW.
- Continues asbestos abatement at 183.7KW.
- Initiated asbestos set-up in the 1706KE/KER below-grade, then suspended work due to structural integrity concerns.
- Remediation continued on 100-K-56, 100-K-47, and 100-K-3 pipelines. 100-K-56 is a 72-inch diameter primary effluent pipeline consisting of multiple pipes that drained various facilities or areas and dumped directly into the outfall or retention basin. 100-K-3 pipeline mixed water to simulate outfall conditions in the river in support of laboratory studies for the effects on fish of radiologically contaminated water discharges into the Columbia River. An electrical duct bank was located under 100-K-47 and 100-K-3, which was determined to be de-energized. The electrical bank was opened and contains asbestos, for which a path forward has been determined. Work to truncate the 105KE from the outfall is in process.
- On UPR-100-K-1 (soils beneath the 105KE Fuel Storage Basin), implementation of the Documented Safety Analysis (DSA) is targeted for full implementation in early January. Continued excavation, demolition, and sizing of piping on the west side of 105KE to support demolition of the rod rack this spring.
- Initiated planning for waste sites around the 183.1KW (high chrome and mercury) and 183.2KW (acid distribution pipe and soils).

#### Base

- Initiated characterization at 182K.
- Initiated asbestos abatement at 182K.
- Continued cold and dark at 182K.
- Installation of the waste site remediation tent structure is complete.
- Electrical wiring is in progress at the Container Transfer Area.
- Completed waste site remediation mobilization efforts and base support activities.

## MAJOR ISSUES

**Issue Statement** - CHPRC received correspondence from RL on October 14, 2009, requesting a proposal/estimate for removal of the K East and K West Reactor Cores. Additionally, the proposal will include the movement of the K East Reactor Core removal ARRA work scope to Base funding, with equivalent movement of Base activities to ARRA. These actions were originally due on November 9 and 23, 2009, respectively. RL sent an e-mail on November 9, 2009 approving extensions to the requested proposals. RL also clarified due dates would not be established, but deliverables are expected after subcontract audits have been completed and issues properly addressed.

**Corrective Action** - RL had communicated these actions to CHPRC prior to issuance of the letter request on October 14, 2009, and additionally, the Project has been supporting their Assistant Manager in development of a presentation to gain full project approval. The Project will submit the proposal and estimate as requested per new direction from RL on November 9, 2009, to submit the proposal after subcontractor audit has been performed and issues addressed. Subcontract audit to be kicked off in December after preliminary briefing of proposal with RL.

**Status** - The Project has assigned a Project Manager and the team has completed the estimating effort. Concurrently, the Project is reviewing the sequencing of facility and waste site demolition/remediation to optimize the near-term removal of not only the K East Reactor Core, but initiation of K West Reactor Core removal preparations as well. The project briefed RL on December 10, 2009, and provided the draft proposal for re-sequencing of facilities and waste site demolition/remediation. The project continues to work with RL to determine the appropriate path forward.

**Issue Statement** - Due to contamination levels in the soil associated with UPR-100-K-1, overall waste quantities will exceed the original project assumptions. Progress is less than anticipated due to additional radiological control requirements.

**Corrective Action** - A recovery plan will be prepared to analyze how much of the existing variance can be improved.

**Status** - The BCR and recovery plan are under development.

## KEY RISKS AND CHALLENGES

Risks for the 100K Area Project are reported in Section B, Spent Nuclear Fuel Stabilization and Disposition (PBS RL-0012).

**PROJECT BASELINE PERFORMANCE**  
**Current Month**  
**(\$M)**

WBS 041/RL-0041 Nuclear Facility D&D – River Corridor	Budgeted Cost of Work Scheduled	Budgeted Cost of Work Performed	Actual Cost of Work Performed	Schedule Variance (\$)	Schedule Variance (%)	Cost Variance (\$)	Cost Variance (%)	Budget at Completion (BAC)
<b>ARRA</b>	8.9	9.0	4.2	0.0	0.3	4.8	53.7	192.0
<b>Base</b>	<u>0.7</u>	<u>0.9</u>	<u>1.3</u>	<u>0.2</u>	35.9	<u>(0.4)</u>	-46.5	<u>272.1</u>
<b>Total</b>	<b>9.6</b>	<b>9.9</b>	<b>5.5</b>	<b>0.2</b>	<b>2.8</b>	<b>4.4</b>	<b>44.6</b>	<b>464.1</b>

Numbers are rounded to the nearest \$0.1M.

### ARRA

**CM Schedule Performance: (\$0.0M/0.3%)**

The positive variance is within established reporting thresholds.

**CM Cost Performance: (+\$4.8M/+53.7%)**

The project continues an overall trend of above average efficiency in work performance achieved, with the main contributors being facility characterization in preparation for D4; and the K West deactivation – debris removal campaign.

### Base

**CM Schedule Performance (+\$0.2M/+35.9%)**

The positive variance is within established reporting thresholds.

**CM Cost Performance (-\$0.4M/-46.5%)**

The negative variance is within established reporting thresholds.

## Contract-to-Date (\$M)

WBS 041/RL-0041 Nuclear Facility D&D – River Corridor	Budgeted Cost of Work Scheduled	Budgeted Cost of Work Performed	Actual Cost of Work Performed	Schedule Variance (\$)	Schedule Variance (%)	Cost Variance (\$)	Cost Variance (%)	Budget at Completion (BAC)
<b>ARRA</b>	45.0	38.0	22.5	(7.0)	-15.6	15.5	40.9	192.0
<b>Base</b>	<u>9.6</u>	<u>9.2</u>	<u>10.0</u>	<u>(0.4)</u>	-4.0	<u>(0.8)</u>	-8.6	<u>272.1</u>
<b>Total</b>	<b>54.6</b>	<b>47.2</b>	<b>32.5</b>	<b>(7.4)</b>	<b>-13.5</b>	<b>14.7</b>	<b>32.1</b>	<b>464.1</b>

Numbers are rounded to the nearest \$0.1M.

### ARRA

#### CTD Schedule Performance: (-\$7.0M/-15.6 %)

The main contributors remain delays in completing specifications for ventilation modifications and utility reroutes, and ordering of associated materials; and the directed slowdown in K East Core Removal engineering and regulatory activities pending a review of the overall project strategy at RL/DOE-HQ.

#### CTD Cost Performance: (+\$15.5M/+40.9 %)

Above average efficiency in work performance achieved, with the main contributors being: Facility characterization in preparation for D4; and K West Deactivation – debris removal campaign.

### Base

#### CTD Schedule Performance (-\$0.4M/-4.0 %)

The negative variance is within established reporting thresholds.

#### CTD Cost Performance (-\$0.8M/-8.6 %)

The negative variance is within established reporting thresholds.

**Contract Performance Report Formats are provided in Appendix A.**

## FUNDS vs. SPEND FORECAST (\$M)

WBS 041/RL-0041 Nuclear Facility D&D – River Corridor	FY 2010		Variance
	Projected Funding	Spending Forecast	
<b>ARRA</b>	122.6	110.5	12.1
<b>Base</b>	<u>20.3</u>	<u>17.0</u>	<u>3.3</u>
<b>Total</b>	<b>142.9</b>	<b>117.5</b>	<b>25.4</b>

Numbers are rounded to the nearest \$0.1M.

### Funds Analysis:

Projected Funding includes FY 2009 uncosted and FY 2010 expected new Budget Authority (BA).

### Critical Path Schedule

Critical Path Analysis can be provided upon request.

### Estimate at Completion (EAC)

The BAC and EAC now include FY 2009 through FY 2018, the PRC contract period.

### Baseline Change Requests

None

## MILESTONE STATUS

None currently identified.

## SELF-PERFORMED WORK

The Section H. clause entitled, Self-Performed Work, is addressed in the Monthly Report Overview.

## GOVERNMENT FURNISHED SERVICES AND INFORMATION (GFS/I)

None currently identified.