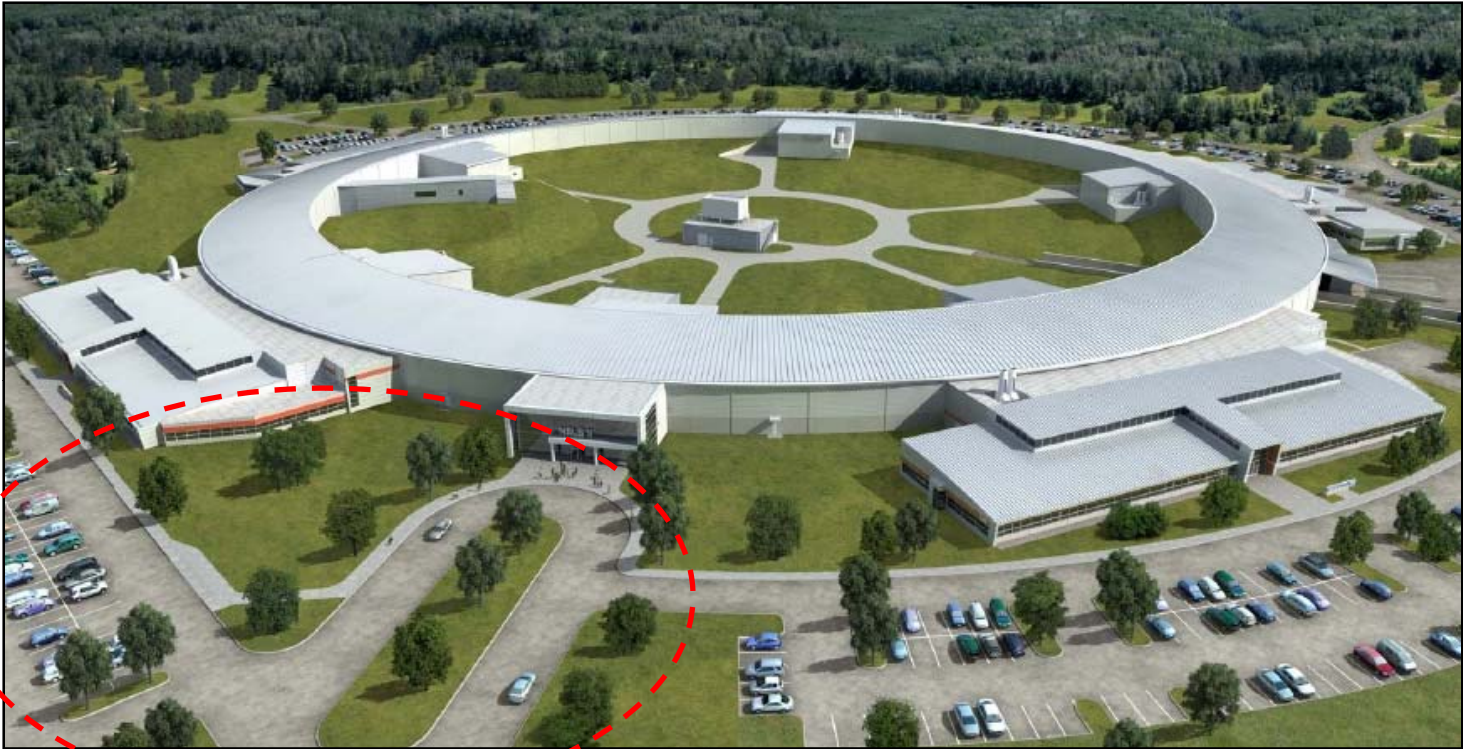


BUILDING 740

SUPPLEMENTAL SAFETY TRAINING



VEHICLE TRAFFIC AND PARKING



Area of Detail

OBEDIENCE TRAFFIC RULES



Obey Traffic Signs



UNAUTHORIZED ACCESS



Access to construction areas
is not authorized

HANDICAP PARKING



Unless authorized, do not park in spaces marked with a handicap symbol. (sticker required)

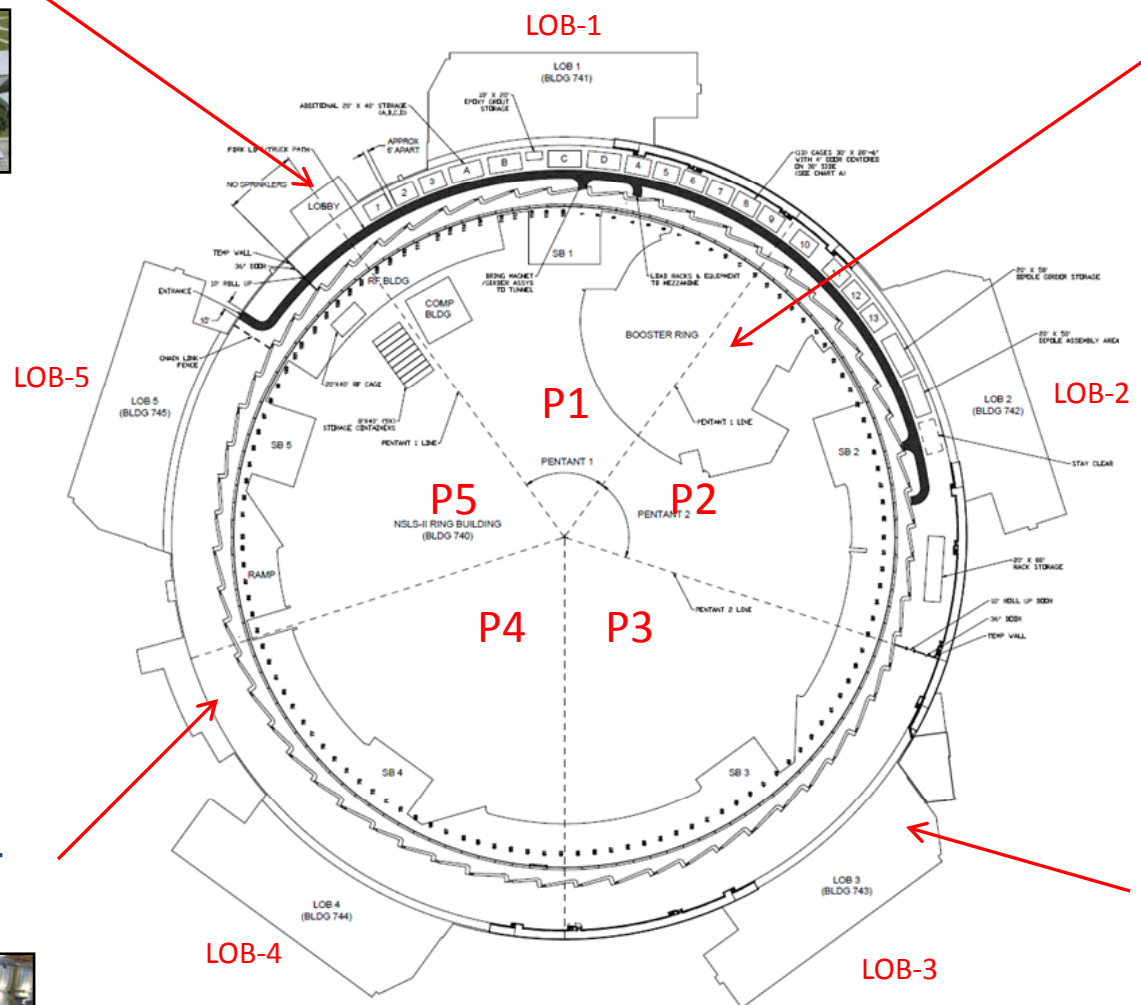
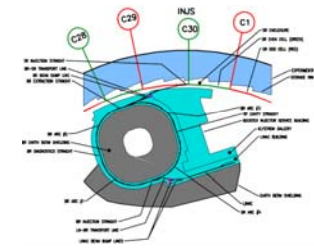


REVIEW AND UNDERSTAND SITE LAYOUT

Main Entrance



Injector
(Linac/Booster/ISA)



Booster Girder Testing Area



Laboratory Office Building (LOB)



RECOGNIZE ALARMS AND SAFETY EQUIPMENT

Fire Alarm



Recognize, understand and pay close attention to alarms and safety equipment

Fire Extinguisher



Phone



Fire Alarm Pull Box



Radiation Monitors



RECOGNIZE AND UNDERSTAND FORMAL AND INFORMAL SIGNAGE

Lock-Out-Tag-Out (LOTO)



Recognize, understand
and pay close attention to
All posted signs

High Voltage



Alarm Locations



Exit Signs



Authorized Access



Restrooms



Informal Signs



Personal Protection Equipment



UNAUTHORIZED USE OF EQUIPMENT

Lifting Equipment



Unauthorized use of
tools and equipment is
Strictly Prohibited



Fork Lifts



Ladders



Machinery



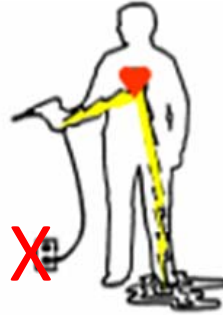
Bicycles



STAY CLEAR OF WET ENVIRONMENTS

Do **NOT** operate powered equipment in wet environments. Increased risk of **Electrical Shock**

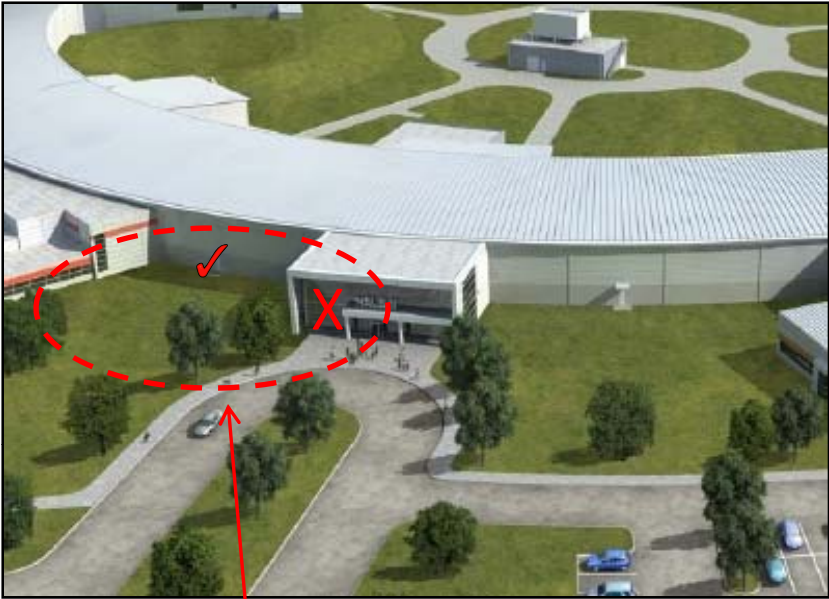
Hand-to-foot shock path



Whenever possible, avoid walking on wet ground. Increased risk of **Slips and Falls**



SITE ENTRANCE



Area of Detail



Do not use main lobby entrance



MAIN ENTRANCE (SAFETY AND COMMUNICATION AREA)



PPE Storage



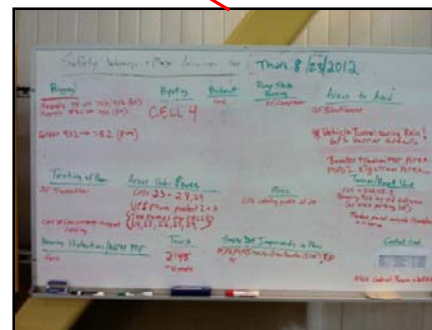
Fire Alarm



Work Permits



Main Entrance/Exit



Daily Planning Board

PPE (Personal Protection and Equipment)



Hard hat, safety glasses and safety shoes **MUST** be worn at all times



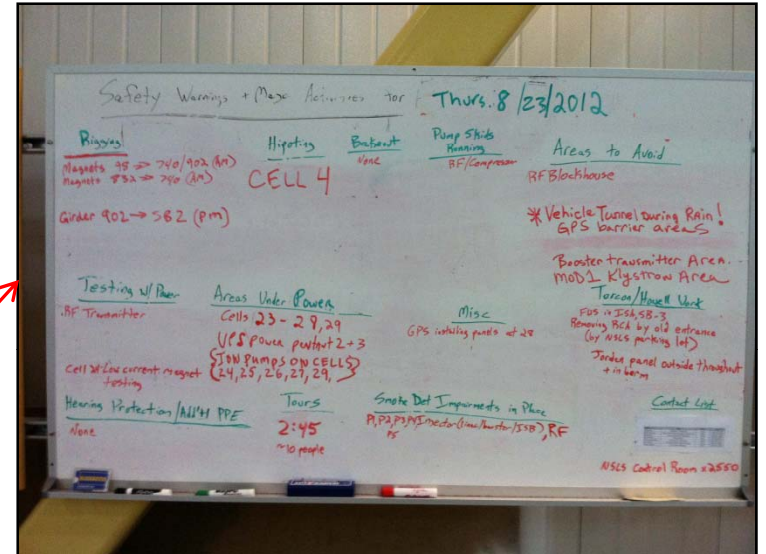
Safety Vests required in designated areas only



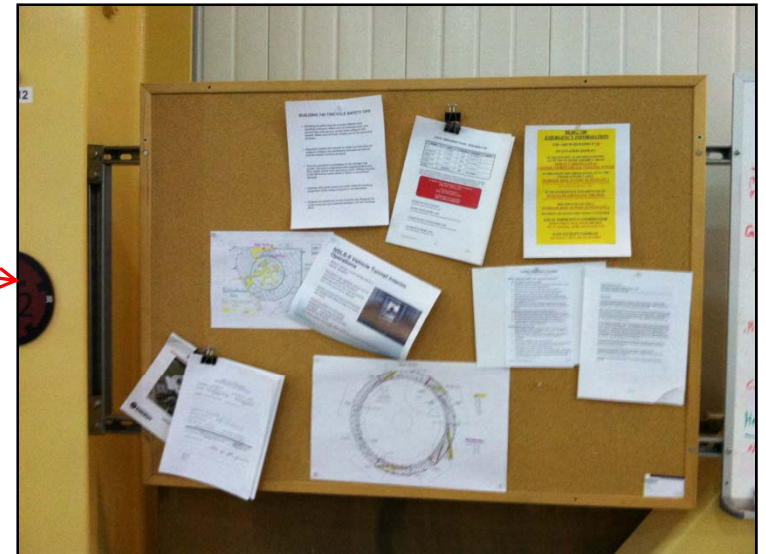
DAILY PLAN AND GENERAL INFORMATION



Area of Detail



Review posted information daily before planning work activities



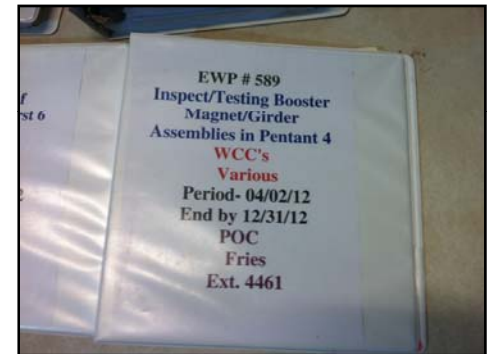
WORK PERMITS

Read and sign applicable Work Permits prior to performing **Any** work



Area of Detail

Booster Girder Testing



Work Permit Table



Booster Work Permit

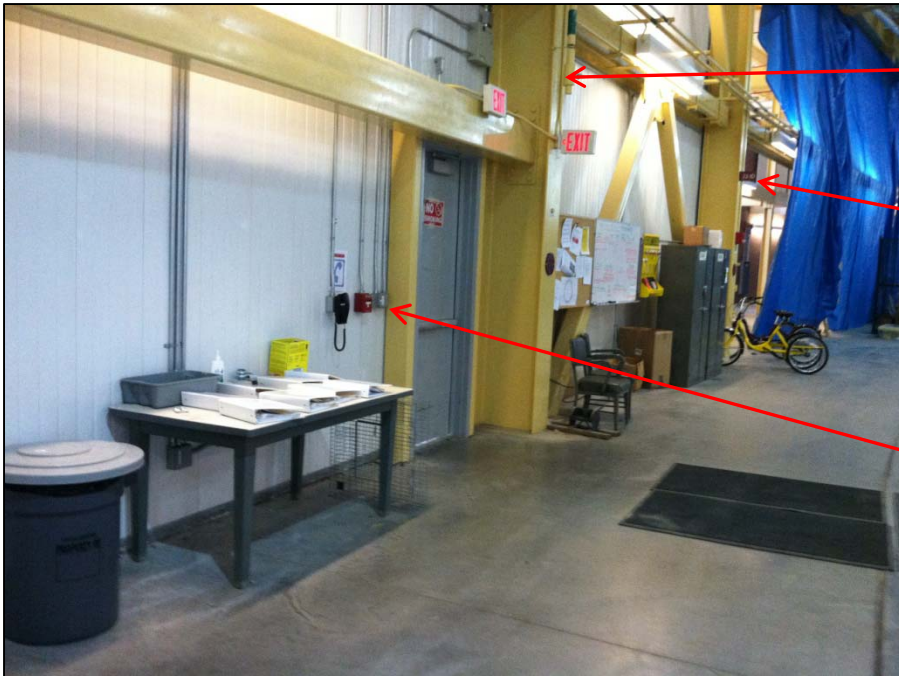


EXPERIMENTAL HALL



BE AWARE OF YOUR SURROUNDINGS

Exit signs, phones, fire alarms, fire extinguisher and fire pull boxes are located throughout the Experimental Hall



Remember
In Case of Emergency
Dial 2222 or 911



STAY CLEAR OF WORK BY OTHERS



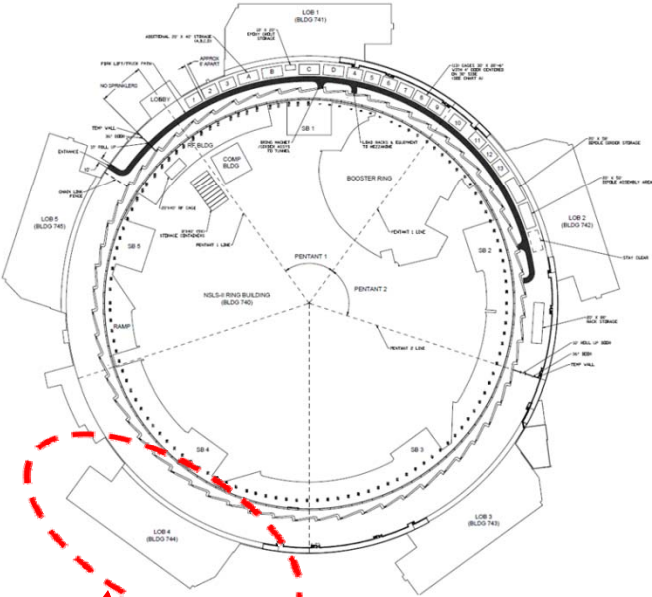
Stay Clear



Stay Clear

Stay Clear of any work that is being performed by others in the tunnel

UNAUTHORIZED ACCESS TO CONSTRUCTION SITES



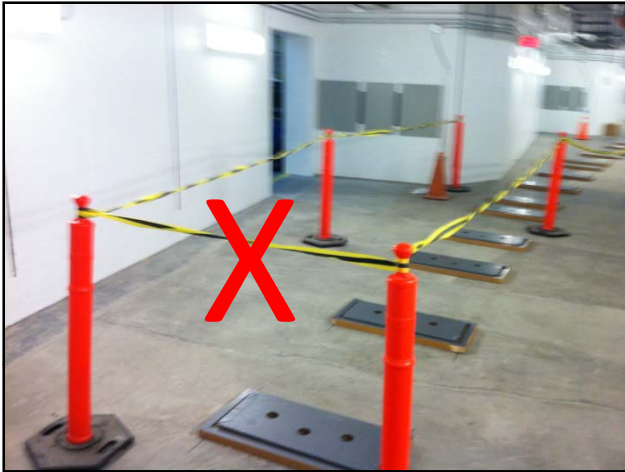
Area of Detail
(All LOBs)

Access to
construction areas
is **NOT** authorized



UNAUTHORIZED ENTRANCE TO SECURED AREAS

Trip Hazard Areas



Active Work Zones



Access to secured areas
is **NOT** authorized

Electrical Hazard Areas



Inactive Work Zones

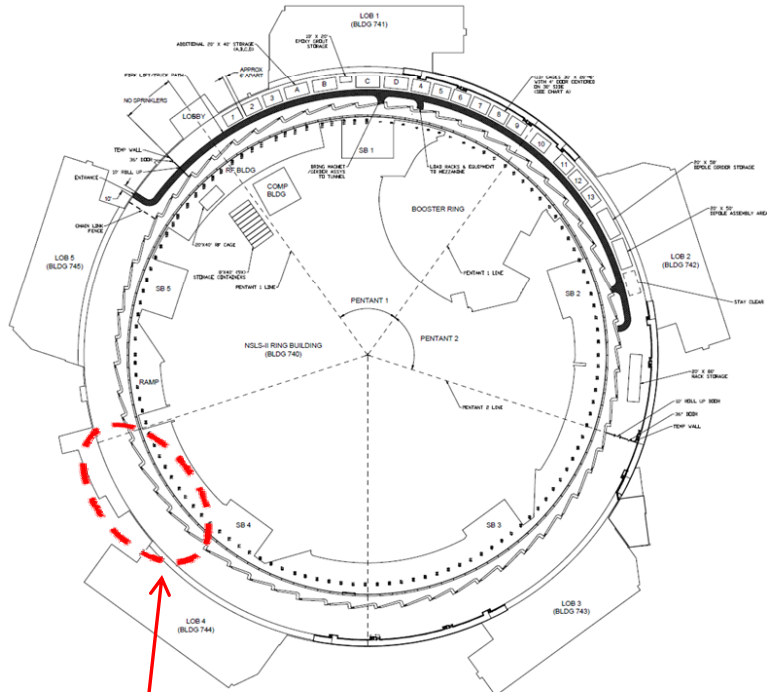


MEZZANINE ACCESS

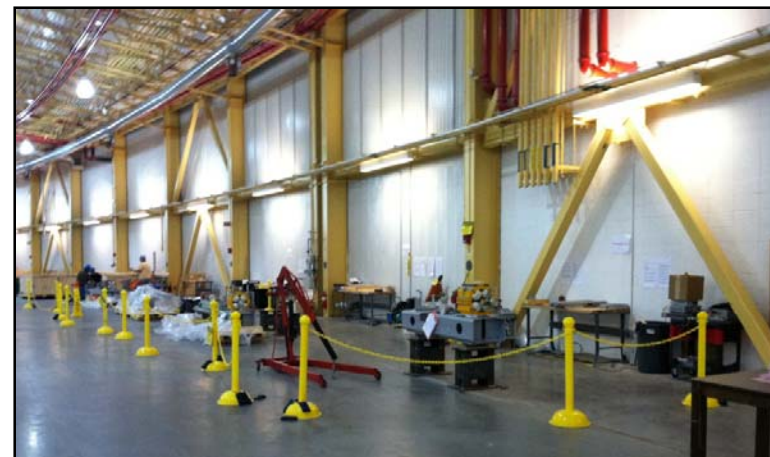
Unless escorted by a BNL employee,
access to the Mezzanine Area
is **NOT** authorized



BOOSTER GIRDER TEST AREA (Pentant 4)



Area of Detail



Access to the Booster Test Area
IS authorized but **NO** work is allowed unless
the appropriate Work Permit is signed



(see Work Permit at main entrance)

BOOSTER GIRDER TEST AREA (loading dock and garage door)



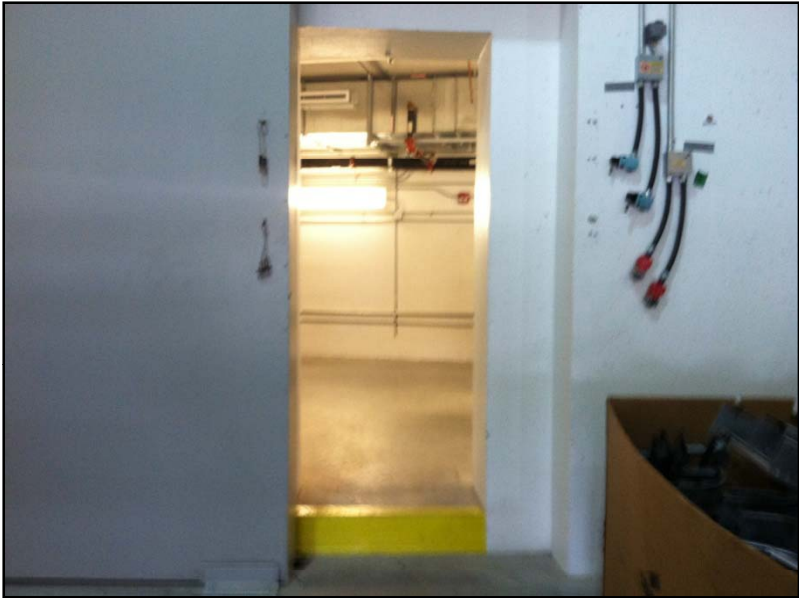
Fire Exit and Alarm



Garage door should be closed when not in use.

ENTRANCE TO STORAGE RING TUNNEL

Ratchet Wall Doorway



Step Configuration



Ramp Configuration



Watch your step when entering and exiting the Storage Ring Tunnel

BE AWARE OF YOUR SURROUNDINGS


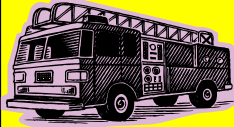
Fire alarms and exit signs are located throughout the Storage Ring Tunnel



Phones and fire extinguishers are located throughout the Storage Ring Tunnel



Remember
In Case of Emergency
Dial 2222 or 911



STAY CLEAR OF WORK



Stay Clear



Stay Clear

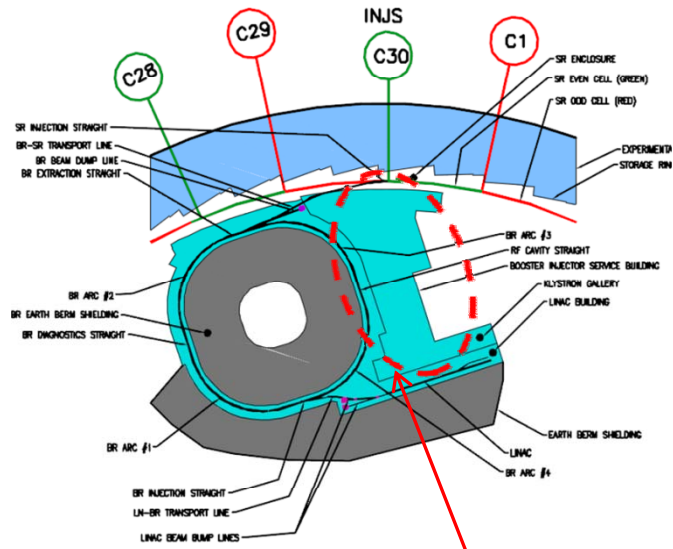
Stay Clear of any work
that is being performed
by others in the tunnel

SECURED AND UNSECURED AREAS

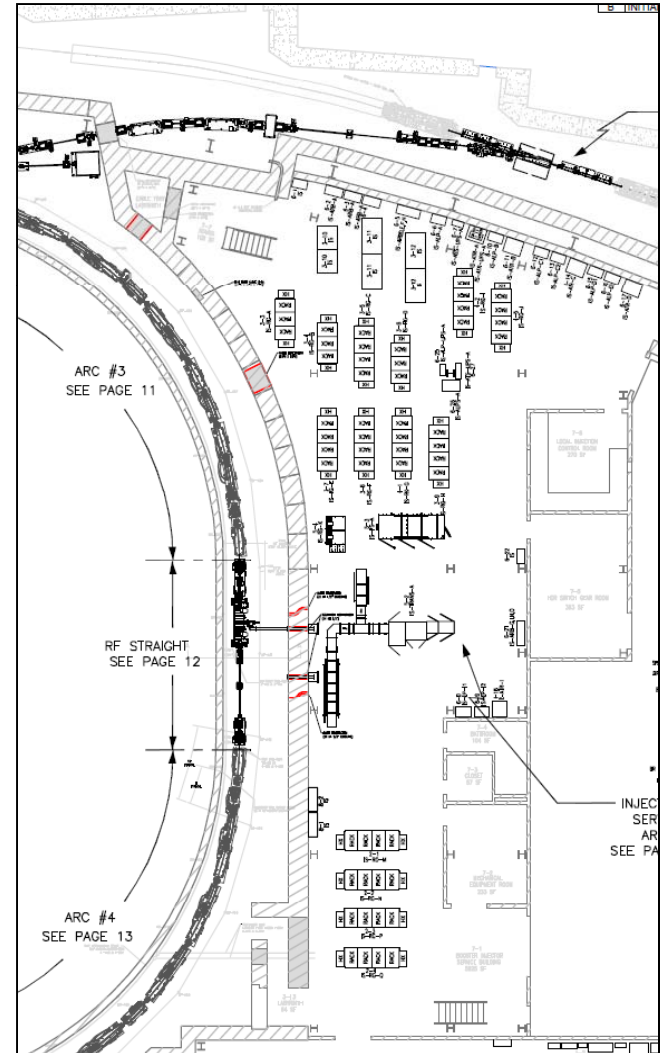
Use caution when walking throughout the Storage Ring Tunnel



INJECTION SERVICE AREA (ISA)



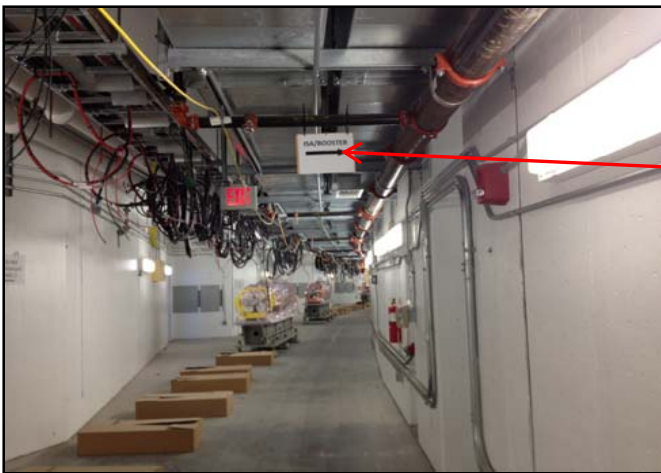
Area of Detail



ENTRANCE TO ISA/LINAC/BOOSTER (From Storage Ring Tunnel)

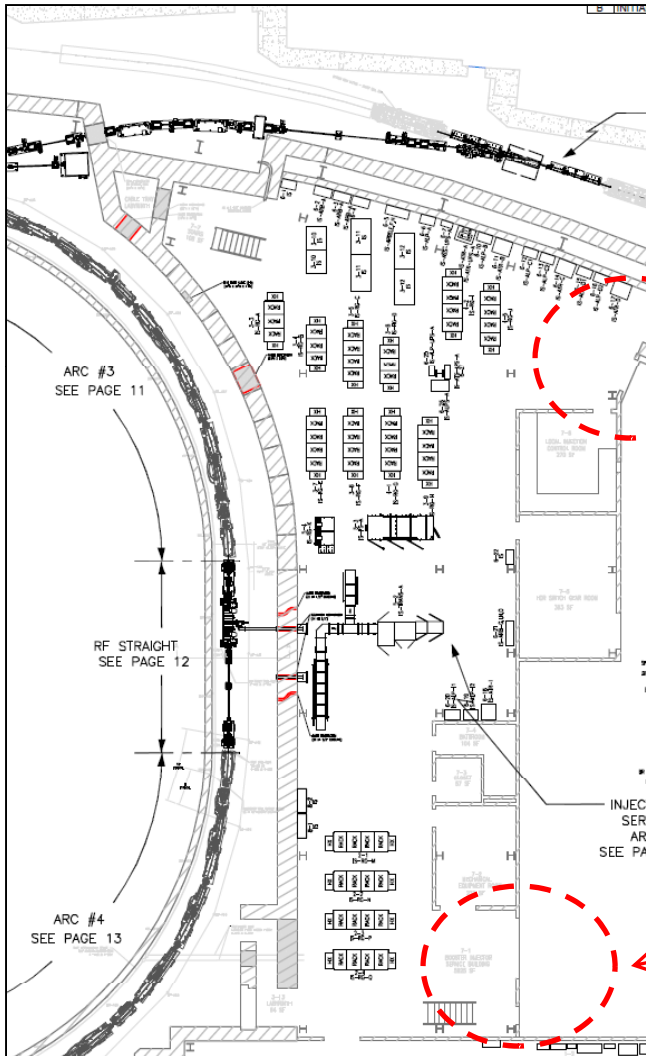


Look for the overhead sign which identifies the entrance to the ISA/Linac/Booster (visible from both sides)



EMERGENCY EXITS

(From Injection Service Area - ISA)



Make sure you know where the emergency exits are located

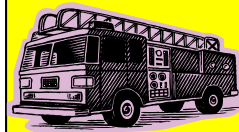
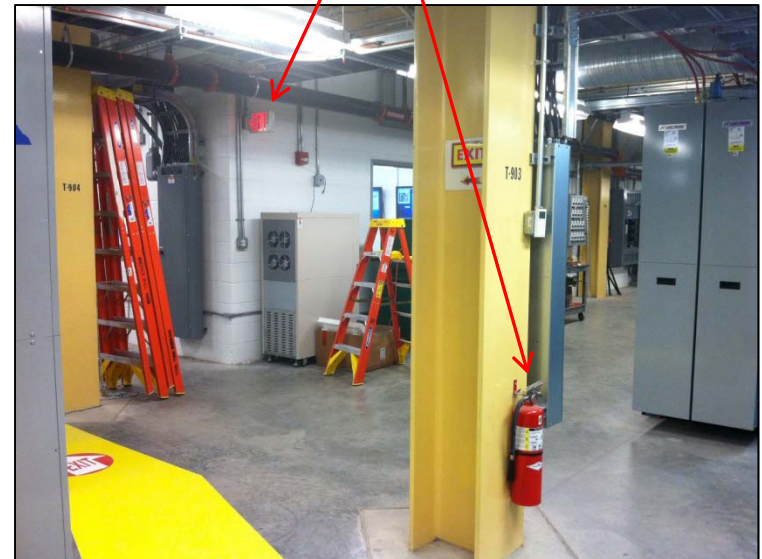


BE AWARE OF YOUR SURROUNDINGS

Fire alarms, phones and emergency pull boxes are located throughout the Injection Service Area



Exit Signs and fire extinguishers are located throughout the Injection Service Area



Remember
In Case of Emergency
Dial 2222 or 911



AUTHORIZED WORK



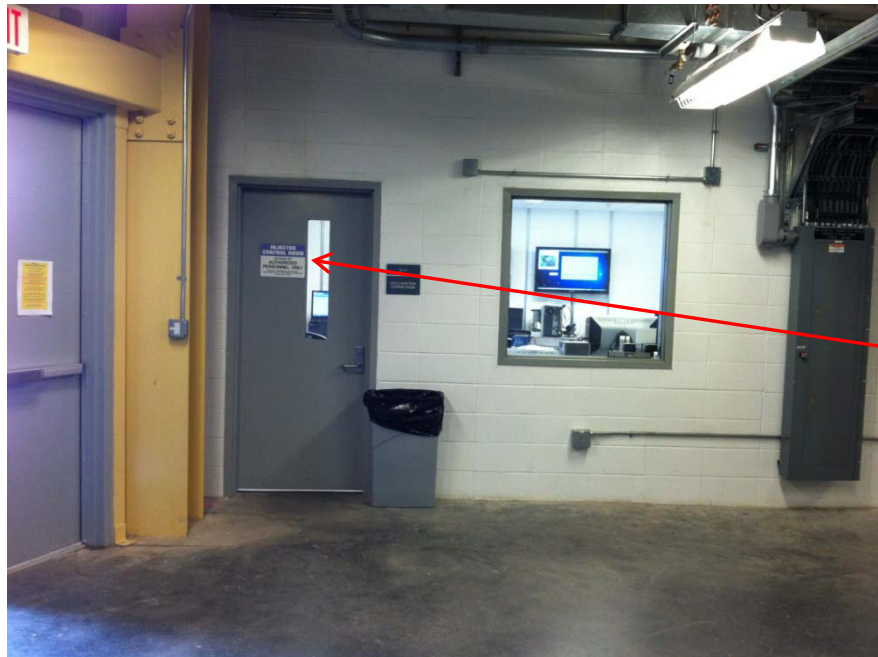
Read and sign applicable Work Permits prior to performing **ANY** work

Work Permits are Located at the Main Entrance to Building 740



INJECTOR CONTROL ROOM

Access to the Control Room is limited to authorized personnel **ONLY**.



Hard-Hat and Safety Glasses are **NOT** required in the Injector Control Room.

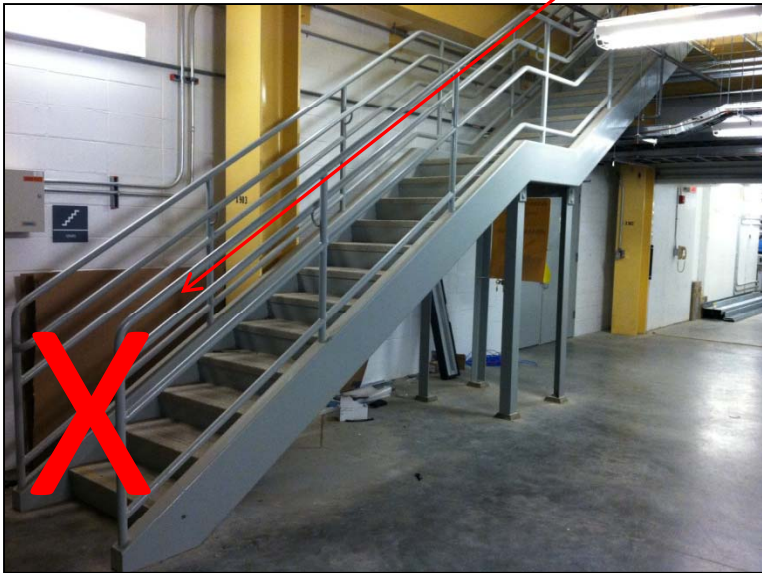


Upon exiting the Control Room all PPE **MUST** be worn at **ALL** times.



SECOND FLOOR ISA

Unless escorted by a BNL Employee,
access to the Second Floor ISA
is **NOT** Authorized



STAY CLEAR OF WORK BY OTHERS



Stay Clear

Stay clear of any work that is being performed in the ISA.
Risk of electrical shock may exist.



Keep at Safe Distance



SECURED AREAS



Access to secured areas
is **NOT** authorized



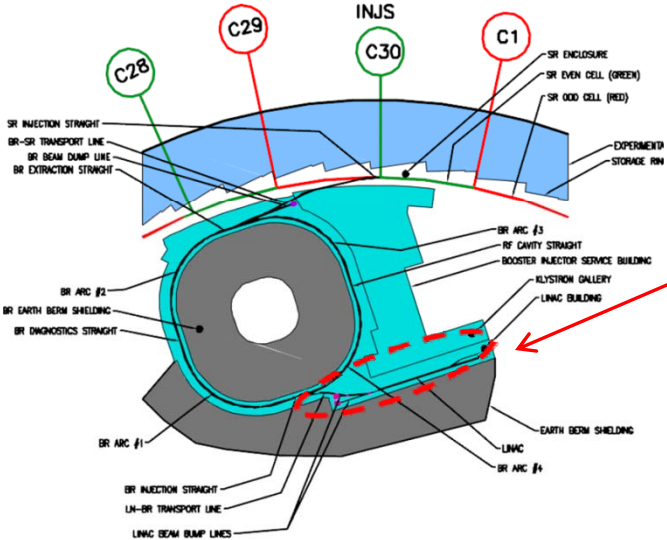
UNSECURED WORK AREAS



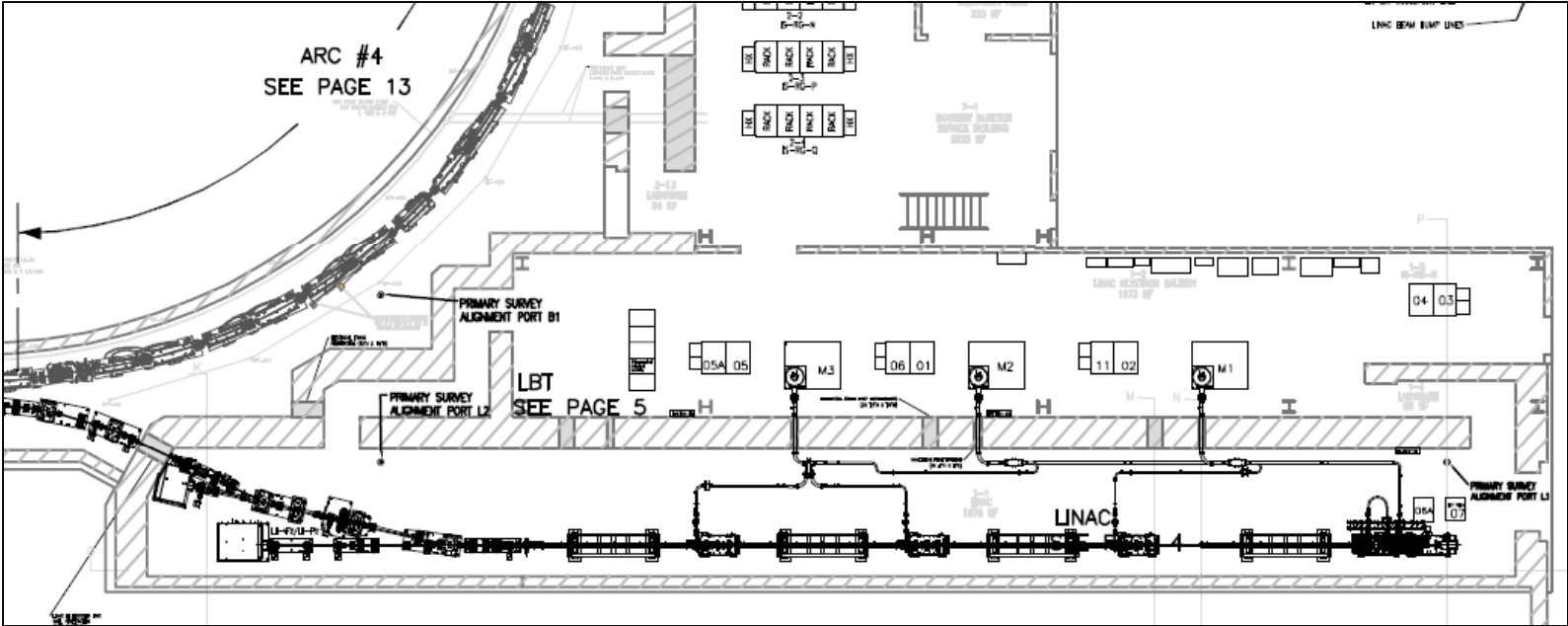
Stay clear of exposed electrical connections.
Risk of Electrical Shock may exist.



LINAC AND KLYSTRON GALLERY



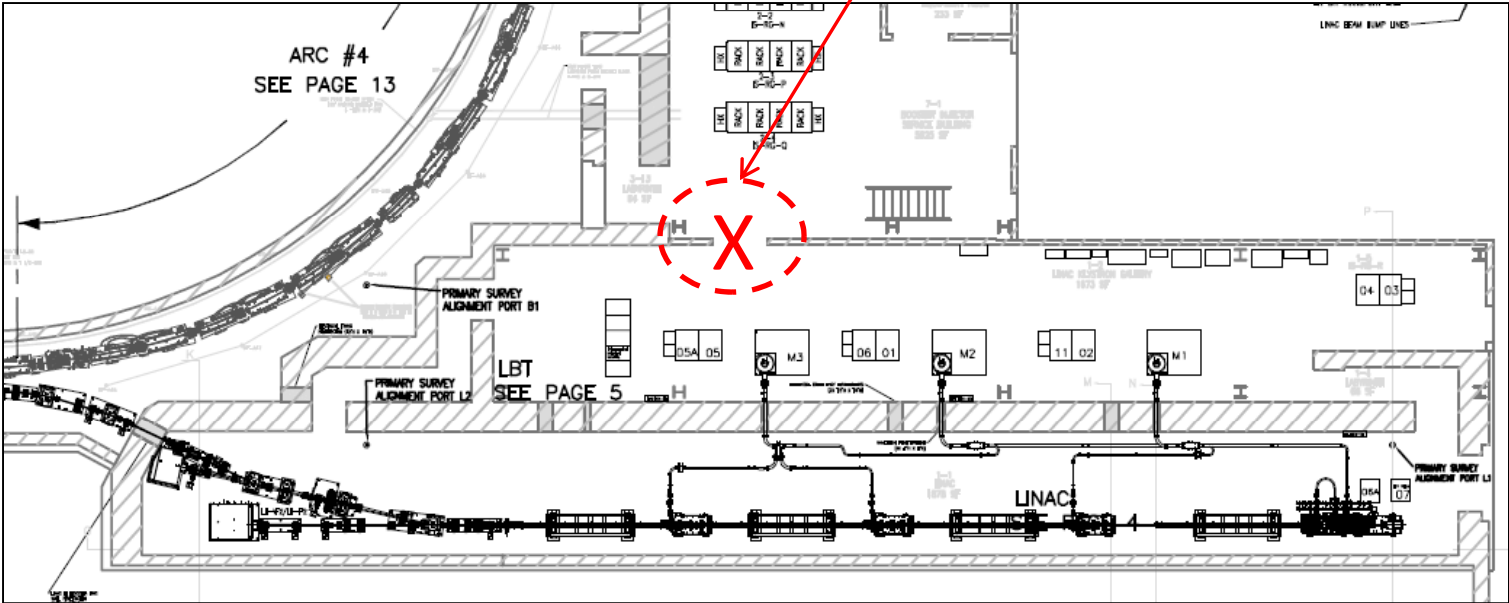
Area of Detail



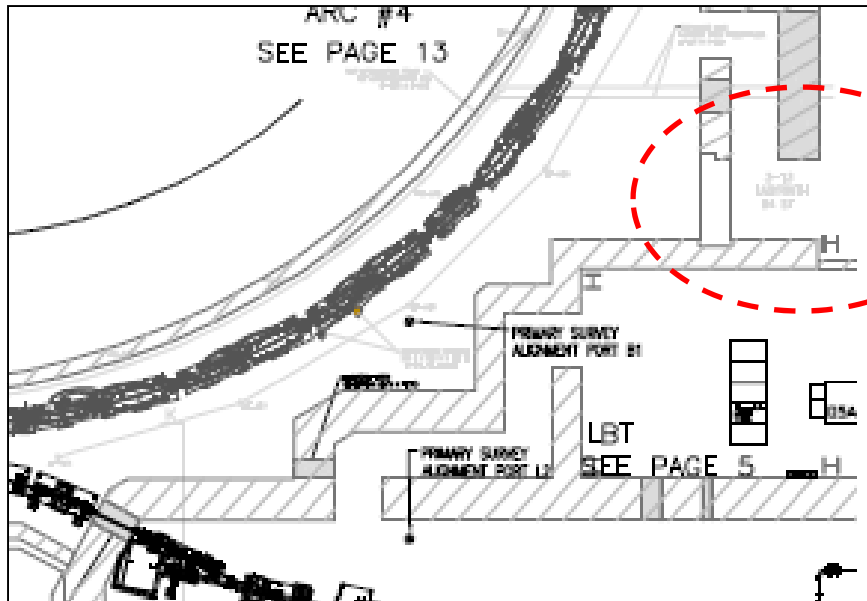
LINAC AND KLYSTRON GALLERY



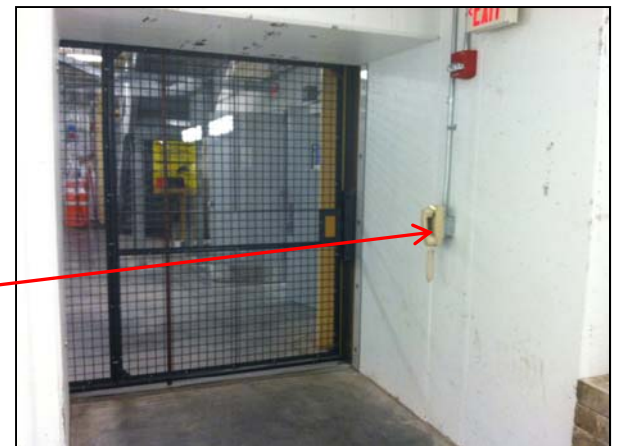
Unless escorted by a BNL employee, access to the Klystron Gallery and Linac Vault is **NOT Authorized**.



Booster Entrance/Exit (Interlocked Gate)



Area of Detail

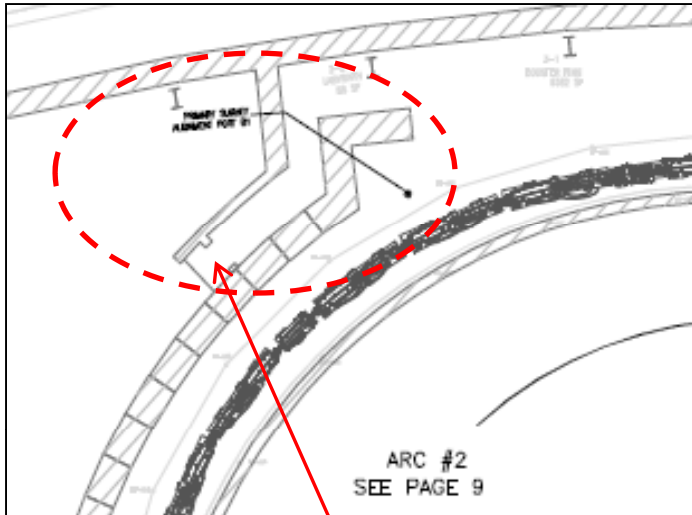


Enter and exit the Booster
Tunnel from the ISA
through the interlocked gate

In case of Emergency
Dial 2222 or 911




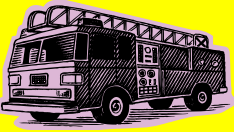
FIRE EXIT (Booster to Courtyard)



**Area of Detail
(near Booster Extraction)**

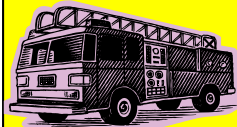


Remember
In Case of Emergency
Dial 2222 or 911



BE AWARE OF YOUR SURROUNDINGS

Exit Signs, Phones, Fire Alarms,
Fire Extinguisher and Fire Pull Boxes
are located throughout the Booster Tunnel



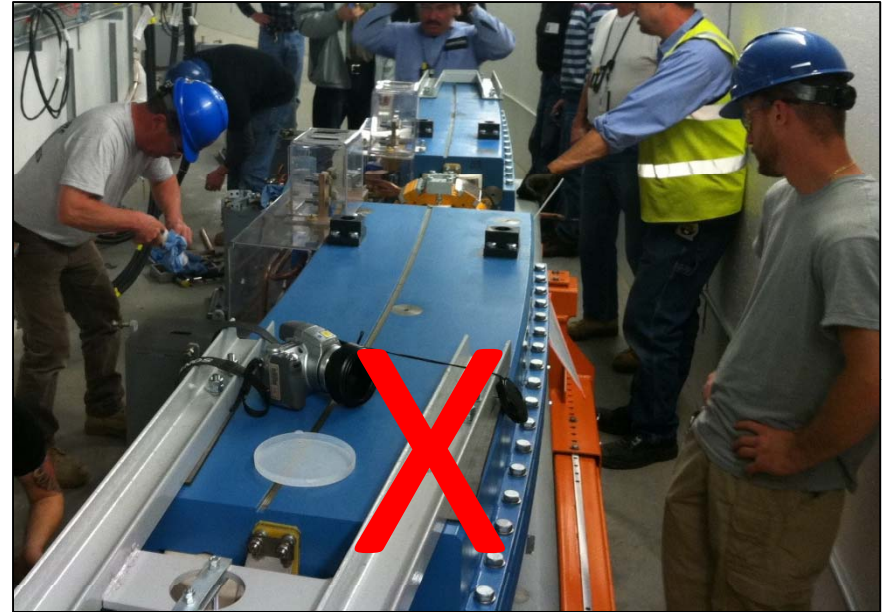
Remember
In Case of Emergency
Dial 2222 or 911



STAY CLEAR OF WORK BY OTHERS



Stay Clear



Stay Clear

Stay clear of any work that is being performed by others in the Booster Tunnel

USE CAUTION WHEN WALKING IN THE BOOSTER TUNNEL



Keep a safe distance from areas marked with caution tape.



Be aware of low hanging objects. Hard Hat **Must** be worn at all times.

CONTROLLED SPACES



STOP
Do NOT Enter



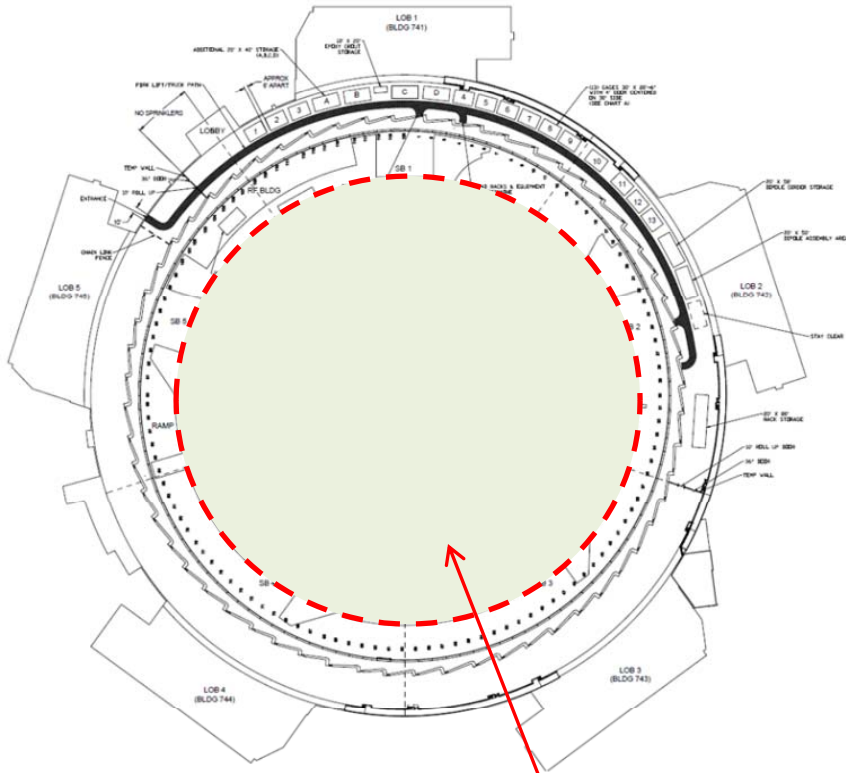
Access to Controlled
Spaces is **NOT** authorized
under any circumstance.



STOP
Do NOT Enter



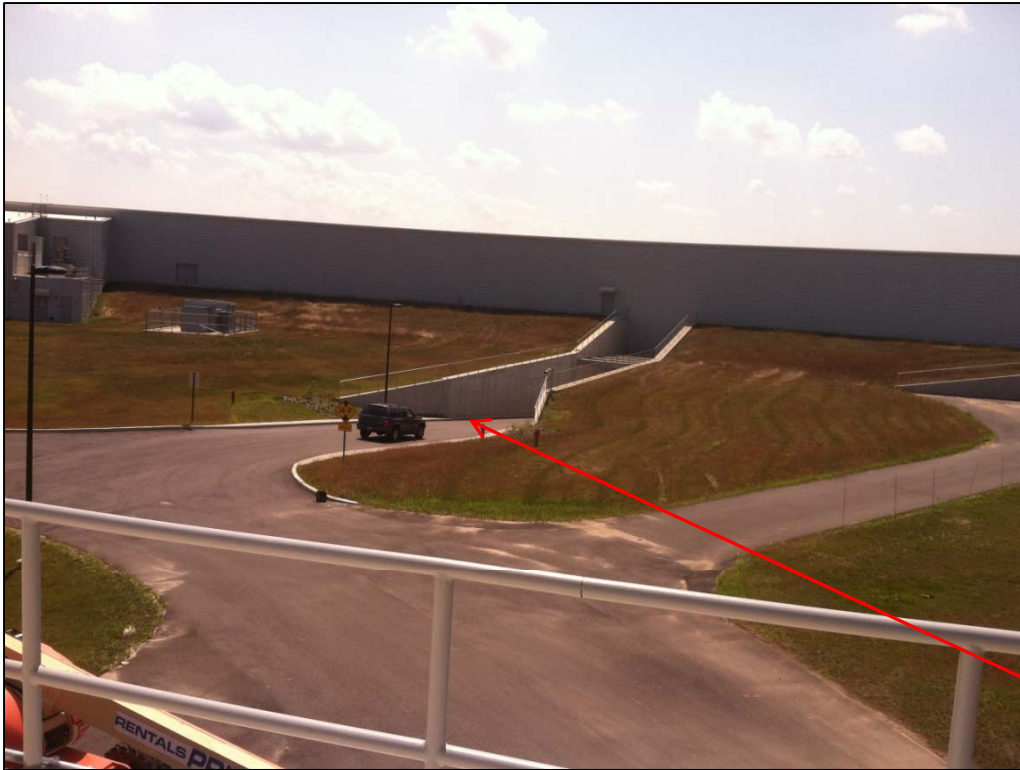
BUILDING 740 COURTYARD



Area of Detail



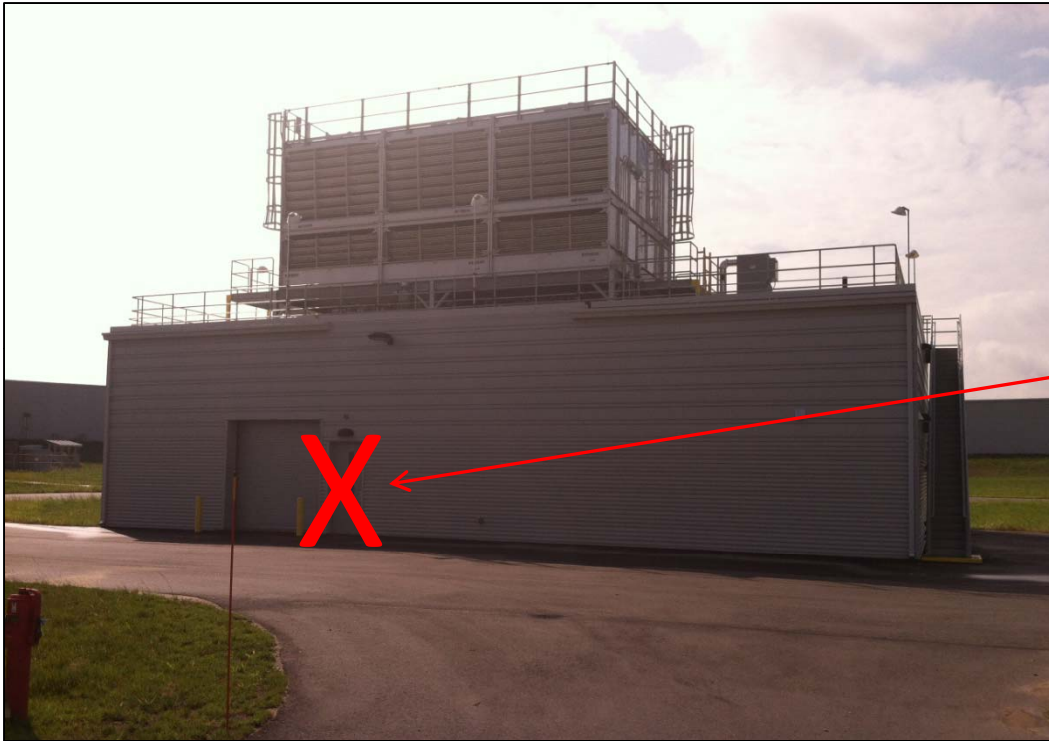
VEHICLE TUNNEL ACCESS



Access to the vehicle tunnel is **NOT** authorized unless for emergency purposes only.



COOLING TOWER ACCESS



Access to the Cooling Tower is **NOT** authorized unless accompanied by a BNL employee.



BOOSTER BERM ACCESS



Access to the
Booster Berm is
NOT AUTHORIZED
at any time.
(Radiological Hazards May Exist)



GENERAL INFORMATION

PHOTON SCIENCES ESH BRIEFING

All workers and visitors who require unescorted access to NSLS-II Buildings 740-747 must also complete the Photon Sciences Environment, Safety & Health Briefing (PS-ESH-BRIEF) online, which provides the following information:

- BNL policies and requirements
- Potential hazards, including radiological area access
- Work planning information
- Additional training that may be required

After all requirements for access have been completed, a NSLS-II site access hard hat label will be provided to you.

ASSEMBLY AREAS AND EVACUATIONS

Outside Assembly Areas

If you hear building alarms, exit the building using the nearest exit and go to the closest outdoor assembly area:

- North parking lot
- Central assembly area at the cooling tower

Indoor Assembly Areas and Shelters-in-Place

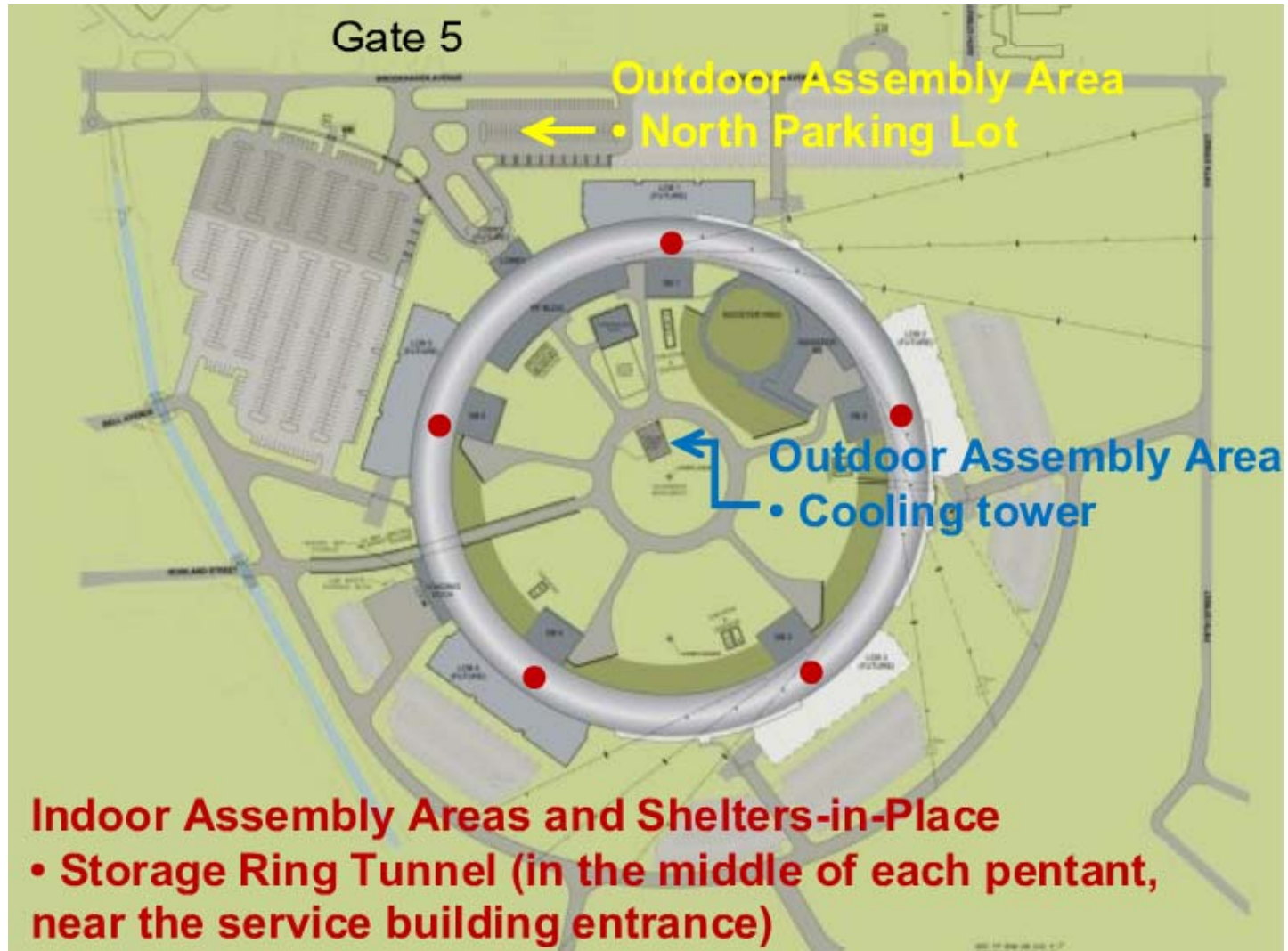
If you hear a site-wide siren with a constant pitch or if a “Shelter-in-Place” emergency is declared, go to the nearest indoor assembly area:

- Located in the storage ring tunnel in the middle of each pentant (near the service building entrance)

Evacuations

If you hear a site-wide, intermittent siren (pitch rises and falls), exit the building using the nearest exit and leave the BNL site immediately.

OUTDOOR ASSEMBLY AREAS AND SHELTER -IN-PLACE



Always know where you are located and remember where you should go in case of emergency.

MEDICAL EMERGENCIES

- Report all injuries immediately to your BNL Supervisor, BNL Contact, or Host.
- Also report all injuries to:
 - Bob Chmiel
X8141, cell 631-466-2823, or chmiel@bnl.gov or
 - Brian Heneveld
x6399, cell 631-466-1076, or bhenevel@bnl.gov
- For minor first aid:
 - During normal working hours (8 a.m. to 5 p.m.), notify your supervisor and go to the BNL Occupational Medicine Clinic (OMC) in Building 490.
 - After hours, go to the Firehouse in Bldg 599.

IMPORTANT CONTACTS TO REMEMBER

Steve Hoey,
ESH Manager
Building 830M
Office: X7936
Cell: (631) 241-8440
hoey@bnl.gov

Townsend Anschutz
Lead Construction Safety Engineer
Building 749
Office: X4248
Cell (631) 618-111
tanschut@bnl.gov

Bob Chmiel
Safety Officer
Building 725
Office: X8141
Cell (631) 466-2823
chmiel@bnl.gov

Greg Fries
Liaison Engineer
Building 817
Office: X4461
Cell (631) 394-7338
gfries@bnl.gov

Bill Wahl
Injector Installation Coordinator
Building 817
Office: X8160
Cell (631) 905-6545
bwahl@bnl.gov

Victor Smalyuk
BINP Work Control Coordinator
Building 725/817
Office: X8237
Cell (631) 413-6394
vsmalyuk@bnl.gov

THIS CONCLUDES YOUR BUILDING 740 SUPPLEMENTAL SAFETY TRAINING



Remember!!
Always be aware of your surroundings and
in case of emergency
Dial 2222 or 911