

MOUNTAIN-PLAINS INFORMATION OFFICE
Kansas City, Mo.

For release: Wednesday, August 15, 2012

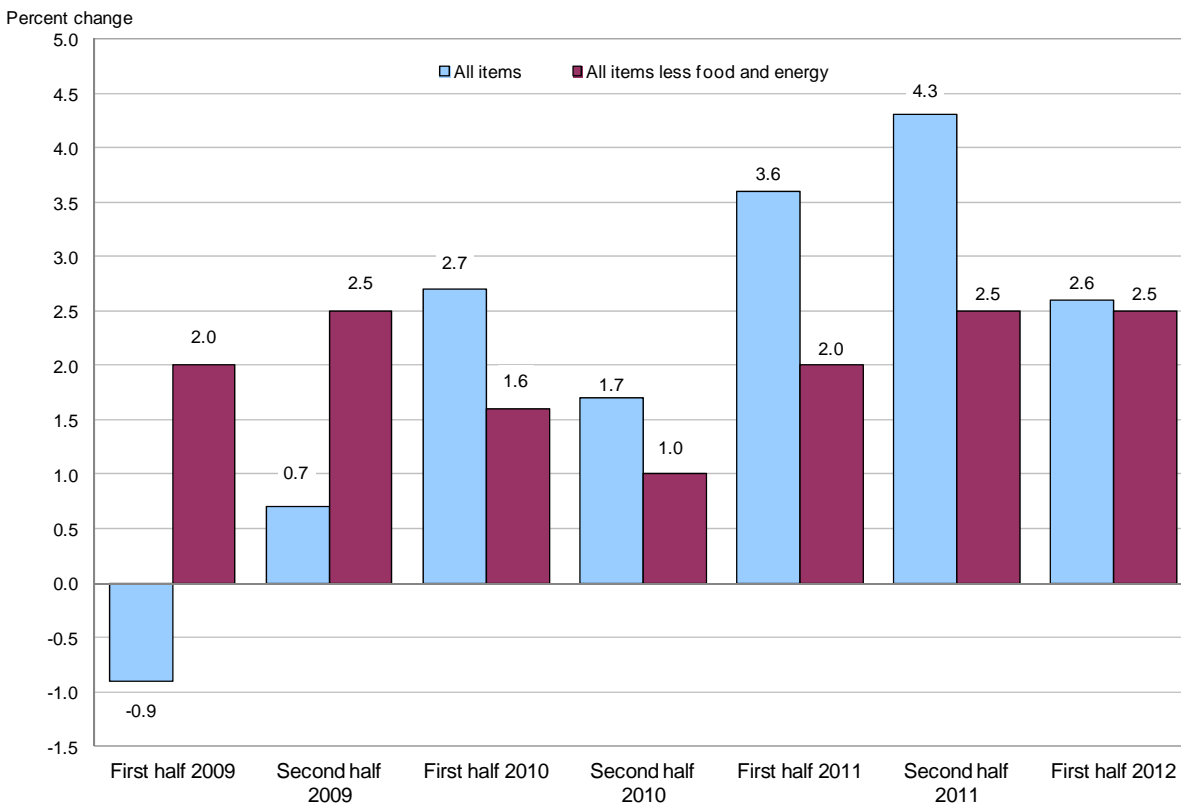
12-1696-KAN

Technical information : (816) 285-7000 • BLSInfoKansasCity@bls.gov • www.bls.gov/ro7
Media contact : (816) 285-7002 • BLSInfoKansasCity@bls.gov

CONSUMER PRICE INDEX (CPI) FOR KANSAS CITY
Prices increased 2.6 percent from the first half of 2011 to the first half of 2012

The Consumer Price Index for All Urban Consumers (CPI-U) for the Kansas City, Mo.-Kan., metropolitan area increased 2.6 percent from the first half of 2011 to the first half of 2012, the U.S. Bureau of Labor Statistics reported today. Regional Commissioner Stanley W. Suchman noted that, though the increase was broad based, costs for shelter and food had the largest upward impact on the overall index. The food index increased 4.4 percent, energy prices edged up 0.4 percent, and the index for all items less food and energy rose 2.5 percent over the period.

Chart 1. Over-the-year percent changes in consumer price indexes, Kansas City, first half 2009–first half 2012



SOURCE: U.S. Bureau of Labor Statistics

Food

Food prices rose 4.4 percent from the first half of 2011 to the first half of 2012. Within the food index, costs for food at home advanced 4.0 percent and prices for food away from home were up 4.7 percent. The rate of increase for both components slowed in the latter half of the period.

Energy

The energy index, which includes motor fuel and household fuels, rose a modest 0.4 percent from the first half of 2011 to the first half of 2012. A 4.2-percent rise in electricity costs, all of which occurred in the earlier half of the period, led the increase in the energy component. Motor fuel prices also contributed by rising 1.1 percent from the first half of 2011. Nearly offsetting these increases, utility (piped) gas service costs declined 6.3 percent, all of which took place in the most recent half of the year.

All items less food and energy

The index for all items less food and energy rose 2.5 percent from the first half of 2011 to the first half of 2012. Over one-third of the increase was attributable to a 2.4-percent advance in shelter costs. Among other components of the index that contributed to the gain were recreation (2.5 percent), education and communication (2.5 percent), and apparel (5.1 percent).

The Kansas City CPI-U stood at 217.392 for the first half of 2012. This means that a market basket of goods and services that cost \$100.00 in 1982-84 cost \$217.39 in the first half of 2012. Because metropolitan area CPI data are not adjusted for seasonal price variation, consumers and businesses should be cautious in drawing conclusions about long-term retail price trends from short-term changes in the metropolitan area indexes.

CPI-W

The Consumer Price Index for Urban Wage Earners and Clerical Workers (CPI-W) for the Kansas City, Mo.-Kan., metropolitan area for the first half of 2012 was 209.747. The CPI-W increased 2.6 percent from the first half of 2011 to the first half of 2012.

Technical Note

The Consumer Price Index (CPI) is a measure of the average change in prices over time in a fixed market basket of goods and services. The Bureau of Labor Statistics publishes CPIs for two population groups: (1) a CPI for All Urban Consumers (CPI-U) which covers approximately 88 percent of the total population and (2) a CPI for Urban Wage Earners and Clerical Workers (CPI-W) which covers 29 percent of the total population. The CPI-U includes, in addition to wage earners and clerical workers, groups such as professional, managerial, and technical workers, the self-employed, short-term workers, the unemployed, and retirees and others not in the labor force.

The CPI is based on prices of food, clothing, shelter, and fuels, transportation fares, charges for doctors' and dentists' services, drugs, and the other goods and services that people buy for day-to-day living. Each month, prices are collected in 87 urban areas across the country from about 4,000 housing units and approximately 26,000 retail establishments--department stores, supermarkets, hospitals, filling stations, and other types of stores and service establishments. All taxes directly associated with the purchase and use of items are included in the index.

The index measures price changes from a designated reference date (1982-84) that equals 100.0. An increase of 16.5 percent, for example, is shown as 116.5. This change can also be expressed in dollars as follows: the price of a base period "market basket" of goods and services in the CPI has risen from \$10 in 1982-84 to \$11.65. For further details see the CPI home page on the Internet at www.bls.gov/cpi and the BLS Handbook of Methods, Chapter 17, The Consumer Price Index, available on the Internet at www.bls.gov/opub/hom/homch17_a.htm.

In calculating the index, price changes for the various items in each location are averaged together with weights that represent their importance in the spending of the appropriate population group. Local data are then combined to obtain a U.S. city average. Because the sample size of a local area is smaller, the local area index is subject to substantially more sampling and other measurement error than the national index. In addition, local indexes are not adjusted for seasonal influences. As a result, local area indexes show greater volatility than the national index, although their long-term trends are quite similar. **NOTE: Area indexes do not measure differences in the level of prices between areas; they only measure the average change in prices for each area since the base period.**

The Kansas City, Mo.-Kan., Metropolitan Statistical Area includes Johnson, Leavenworth, Miami, and Wyandotte Counties in Kansas; and Cass, Clay, Clinton, Jackson, Lafayette, Platte, and Ray Counties in Missouri.

For personal assistance or further information on Consumer Price Indexes, as well as other Bureau products, contact the Mountain-Plains Information Office at (816) 285-7000 from 9:00 a.m. to 12:00 p.m. and 1:00 p.m. to 4:00 p.m. CT.

Information in this release will be made available to sensory impaired individuals upon request.
Voice phone: 202-691-5200; TDD message referral phone number (Federal Relay Service):
1-800-877-8339.

Table 1. Consumer Price Index for All Urban Consumers (CPI-U): Indexes for semiannual averages and percent changes for selected periods

Kansas City, MO-KS (1982-84=100 unless otherwise noted)

Item and Group	Semiannual average indexes			Percent change to 1st half 2012 from—	
	1st half 2011	2nd half 2011	1st half 2012	1st half 2011	2nd half 2011
Expenditure category					
All items	211.860	215.140	217.392	2.6	1.0
All items (1967=100)	629.090	638.831	645.515	-	-
Food and beverages	230.330	237.259	240.082	4.2	1.2
Food	234.557	242.143	244.835	4.4	1.1
Food at home	227.507	234.782	236.659	4.0	.8
Food away from home	246.076	252.802	257.688	4.7	1.9
Alcoholic beverages	181.298	181.924	185.455	2.3	1.9
Housing	195.539	198.753	199.294	1.9	.3
Shelter	217.186	219.680	222.382	2.4	1.2
Rent of primary residence ¹	218.021	221.096	223.735	2.6	1.2
Owners' equivalent rent of residences ^{1 2}	213.795	216.328	217.848	1.9	.7
Owners' equivalent rent of primary residence ^{1 2}	213.795	216.328	217.848	1.9	.7
Fuels and utilities	204.780	215.510	206.558	.9	-4.2
Household energy	174.665	186.717	174.957	.2	-6.3
Energy services ¹	171.973	184.277	172.278	.2	-6.5
Electricity ¹	140.365	154.730	146.298	4.2	-5.4
Utility (piped) gas service ¹	179.652	180.122	168.364	-6.3	-6.5
Household furnishings and operations	123.286	123.497	122.905	-.3	-.5
Apparel	113.241	115.429	119.032	5.1	3.1
Transportation	206.796	208.535	211.753	2.4	1.5
Private transportation	202.767	204.788	208.326	2.7	1.7
Motor fuel	307.116	303.664	310.517	1.1	2.3
Gasoline (all types)	308.410	304.234	311.073	.9	2.2
Gasoline, unleaded regular ³	303.140	298.928	305.343	.7	2.1
Gasoline, unleaded midgrade ^{3 4}	370.390	365.426	374.948	1.2	2.6
Gasoline, unleaded premium ³	296.038	292.650	299.604	1.2	2.4
Medical care	320.373	320.928	326.787	2.0	1.8
Recreation ⁵	126.580	128.141	129.800	2.5	1.3
Education and communication ⁵	126.353	127.434	129.547	2.5	1.7
Other goods and services	358.956	366.710	373.848	4.1	1.9
Commodity and service group					
All items	211.860	215.140	217.392	2.6	1.0
Commodities	185.137	188.068	191.012	3.2	1.6
Commodities less food and beverages	162.154	163.499	166.473	2.7	1.8
Nondurables less food and beverages	219.212	220.748	226.154	3.2	2.4
Durables	108.790	109.926	111.051	2.1	1.0
Services	238.387	242.018	243.703	2.2	.7
Special aggregate indexes					
All items less medical care	205.799	209.187	211.242	2.6	1.0
All items less shelter	211.579	215.113	217.277	2.7	1.0
Commodities less food	162.957	164.278	167.320	2.7	1.9
Nondurables	225.312	229.280	233.328	3.6	1.8
Nondurables less food	217.078	218.551	223.946	3.2	2.5
Services less rent of shelter ²	271.964	276.835	277.512	2.0	.2
Services less medical care services	227.856	231.671	232.998	2.3	.6
Energy	237.201	241.815	238.244	.4	-1.5
All items less energy	210.778	213.902	216.564	2.7	1.2
All items less food and energy	206.906	209.320	211.979	2.5	1.3

¹ This index series was calculated using a Laspeyres estimator. All other item stratum index series were calculated using a geometric means estimator.

² Index is on a December 1982=100 base.

³ Special index based on a substantially smaller sample.

⁴ Indexes on a December 1993=100 base.

⁵ Indexes on a December 1997=100 base.

- Data not available.

Table 2. Consumer Price Index for Urban Wage Earners and Clerical Workers (CPI-W):Indexes for semiannual averages and percent changes for selected periods

Kansas City, MO-KS (1982-84=100 unless otherwise noted)

Item and Group	Semiannual average indexes			Percent change to 1st half 2012 from—	
	1st half 2011	2nd half 2011	1st half 2012	1st half 2011	2nd half 2011
Expenditure category					
All items	204.353	207.756	209.747	2.6	1.0
All items (1967=100)	598.755	608.724	614.559	-	-
Food and beverages	231.912	239.477	242.417	4.5	1.2
Food	235.462	243.582	246.411	4.7	1.2
Food at home	226.047	233.439	235.640	4.2	.9
Food away from home	250.974	258.752	263.808	5.1	2.0
Alcoholic beverages	183.294	184.447	188.039	2.6	1.9
Housing	186.456	189.892	189.786	1.8	-.1
Shelter	205.009	207.465	209.650	2.3	1.1
Rent of primary residence ¹	218.021	221.096	223.735	2.6	1.2
Owners' equivalent rent of residences ^{1 2}	194.647	196.953	198.337	1.9	.7
Owners' equivalent rent of primary residence ^{1 2}	194.647	196.953	198.337	1.9	.7
Fuels and utilities	204.482	215.084	206.569	1.0	-4.0
Household energy	174.820	186.690	175.517	.4	-6.0
Energy services ¹	172.644	184.999	173.306	.4	-6.3
Electricity ¹	140.367	154.732	146.300	4.2	-5.4
Utility (piped) gas service ¹	179.651	180.121	168.363	-6.3	-6.5
Household furnishings and operations	111.326	112.088	110.073	-1.1	-1.8
Apparel	105.629	106.887	109.527	3.7	2.5
Transportation	196.334	197.988	200.871	2.3	1.5
Private transportation	194.480	196.269	199.349	2.5	1.6
Motor fuel	307.017	303.562	310.606	1.2	2.3
Gasoline (all types)	308.402	304.227	311.066	.9	2.2
Gasoline, unleaded regular ³	303.136	298.925	305.340	.7	2.1
Gasoline, unleaded midgrade ^{3 4}	370.390	365.426	374.948	1.2	2.6
Gasoline, unleaded premium ³	296.027	292.639	299.593	1.2	2.4
Medical care	325.105	325.567	332.318	2.2	2.1
Recreation ⁵	126.242	127.652	129.273	2.4	1.3
Education and communication ⁵	118.402	119.041	120.829	2.0	1.5
Other goods and services	382.693	391.668	398.469	4.1	1.7
Commodity and service group					
All items	204.353	207.756	209.747	2.6	1.0
Commodities	182.154	185.366	188.424	3.4	1.6
Commodities less food and beverages	158.703	160.116	162.815	2.6	1.7
Nondurables less food and beverages	219.679	221.070	226.950	3.3	2.7
Durables	110.097	111.622	112.579	2.3	.9
Services	230.277	233.904	235.019	2.1	.5
Special aggregate indexes					
All items less medical care	199.170	202.643	204.431	2.6	.9
All items less shelter	205.141	208.821	210.919	2.8	1.0
Commodities less food	159.774	161.180	164.002	2.6	1.8
Nondurables	226.548	230.781	235.506	4.0	2.0
Nondurables less food	218.376	219.757	225.708	3.4	2.7
Services less rent of shelter ²	239.323	243.725	243.738	1.8	.0
Services less medical care services	219.756	223.497	224.240	2.0	.3
Energy	237.312	241.306	238.645	.6	-1.1
All items less energy	202.275	205.578	207.868	2.8	1.1
All items less food and energy	195.583	197.954	200.133	2.3	1.1

¹ This index series was calculated using a Laspeyres estimator. All other item stratum index series were calculated using a geometric means estimator.

² Index is on a December 1984=100 base.

³ Special index based on a substantially smaller sample.

⁴ Indexes on a December 1993=100 base.

⁵ Indexes on a December 1997=100 base.

- Data not available.