

## The Department of Defense Coordinated Bird Monitoring Plan

The program to provide technical assistance on bird monitoring is part of a project to implement the recently-completed DoD “Coordinated Bird Monitoring Plan”.

The Plan provides guidance on DoD’s role in bird monitoring at various spatial scales including how installations can best design and carry out site-specific monitoring projects and how DoD should participate in regional and national programs.

The overall goal of the Plan is to insure that DoD meets its conservation and regulatory responsibilities for monitoring birds, especially under the recently signed Memorandum of Understanding (MOU) for migratory birds and the Final Rule authorizing take of migratory birds promulgated by the US Fish and Wildlife Service.

The US Geological Survey has entered into a contract with DoD to provide free assistance on bird monitoring projects. The assistance, which is available to all DoD personnel, includes:

Clarifying goals and objectives

Preparation of GIS products

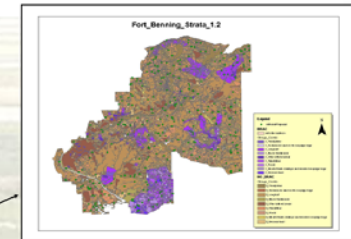
Designing sampling plans

Selecting field methods and design of field forms

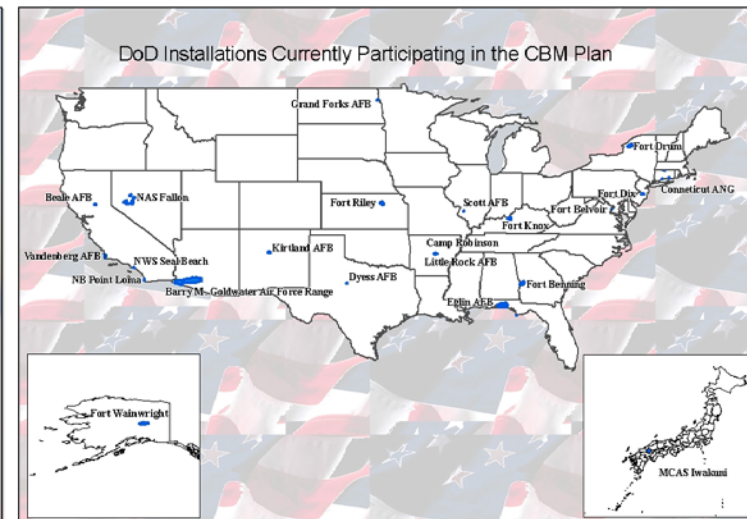
Analysis of the data

Preparation of metadata and long-term storage of data

Incorporation of results into other databases



After completion of the DoD CBM Plan, DoD contracted with the US Geological Survey to implement the Plan. The contract calls for USGS to provide detailed assistance to installation biologists and managers. The contract is being managed for USGS by Jonathan Bart and Leah Dunn in Boise, Idaho and by Rich Fischer (Corps of Engineers). They are providing assistance to numerous installations on setting goals, designing sampling plans, selecting field methods, analyzing survey results, and storage of the data in a long-term repository maintained by the USGS in Boise. If you are interested in this assistance, contact Jon Bart at (208) 426-5216, [jon\\_bart@usgs.gov](mailto:jon_bart@usgs.gov) or Leah Dunn (208) 426-2696, [ldboise@gmail.com](mailto:ldboise@gmail.com), for more information.



Contact Jon Bart (208 426-5216, [jon\\_bart@usgs.gov](mailto:jon_bart@usgs.gov)) or Leah Dunn (208 426-2696, [ldboise@gmail.com](mailto:ldboise@gmail.com)), for more information

