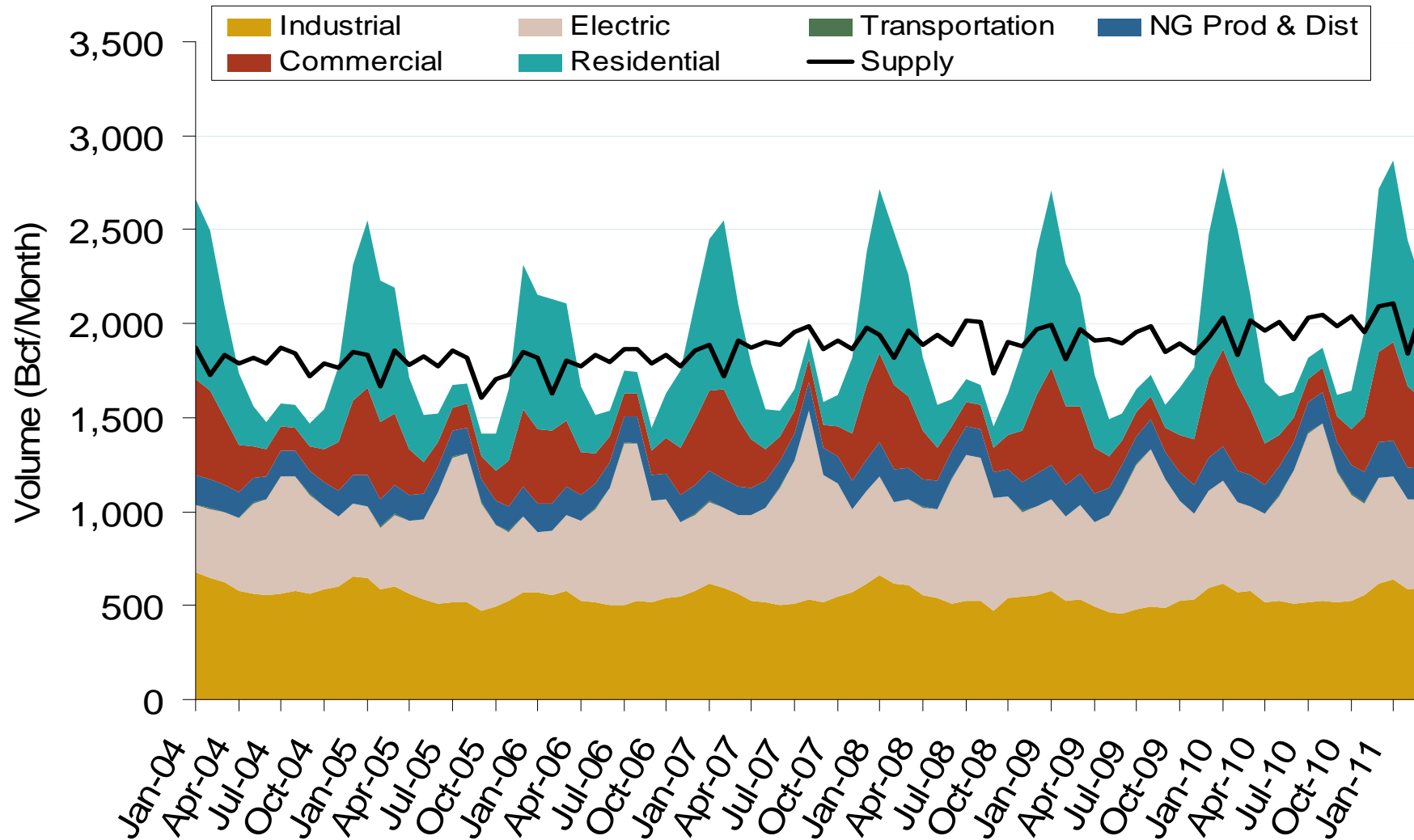


Natural Gas Market National Overview



Annual U.S. Natural Gas Consumption by Sector

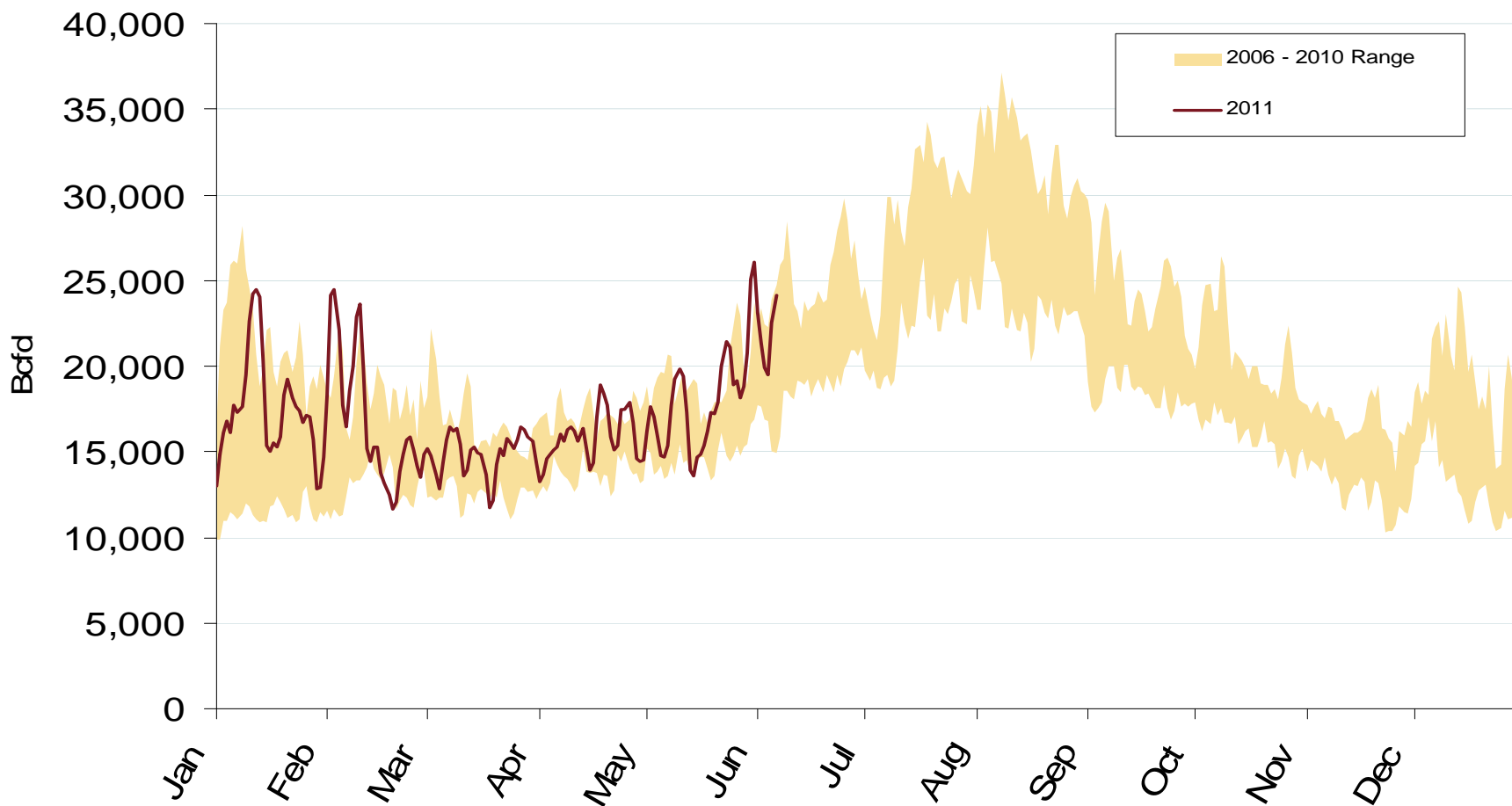


Note: Supply includes lower 48 state production, net pipeline imports, and LNG imports.

Source: Derived from EIA data
June 2011

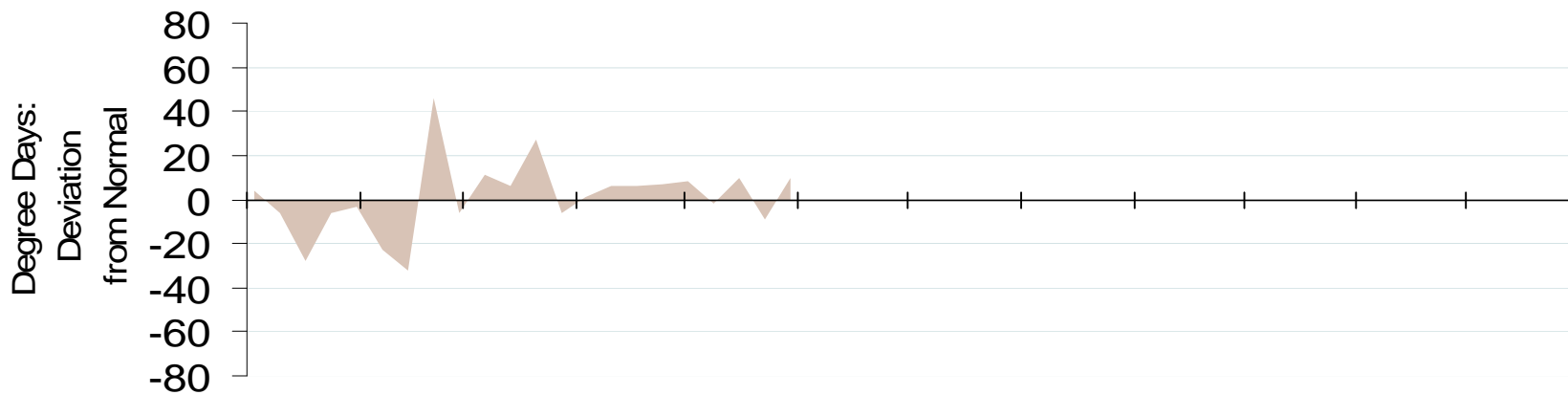
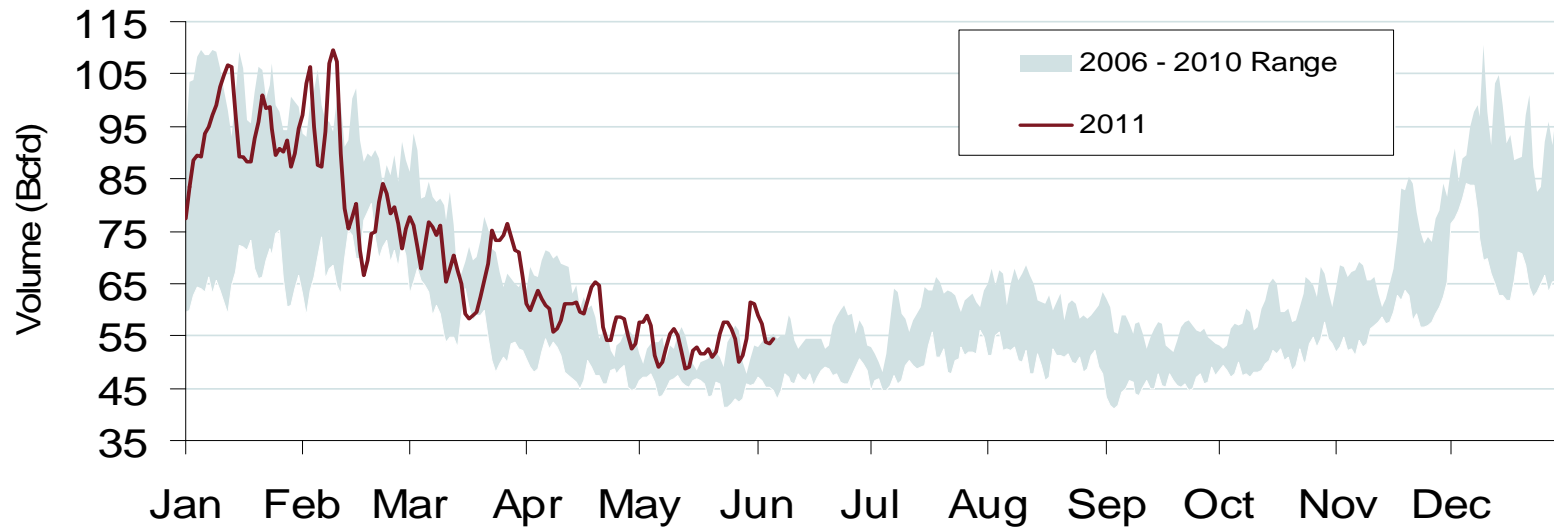
Updated June 3, 2011

U.S. Natural Gas Consumption for Power Generation



Source: Derived from *Bentek Energy* data.

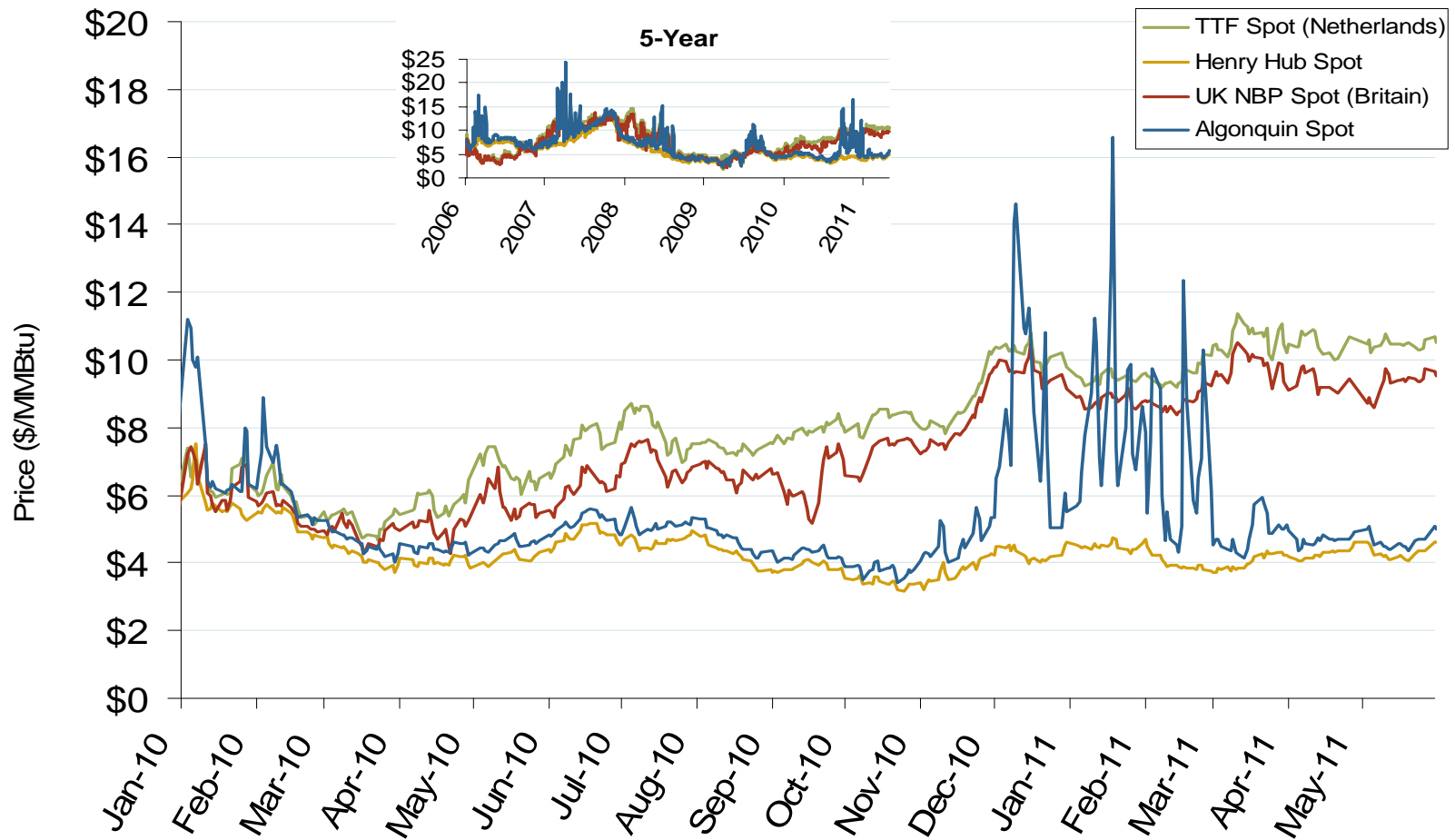
Total U.S. Natural Gas Demand (All Sectors) and Temperatures



Source: Derived from *Bentek Energy* and *Weekly NOAA* data.

Updated June 3, 2011

Atlantic Basin European and US Spot Natural Gas Prices



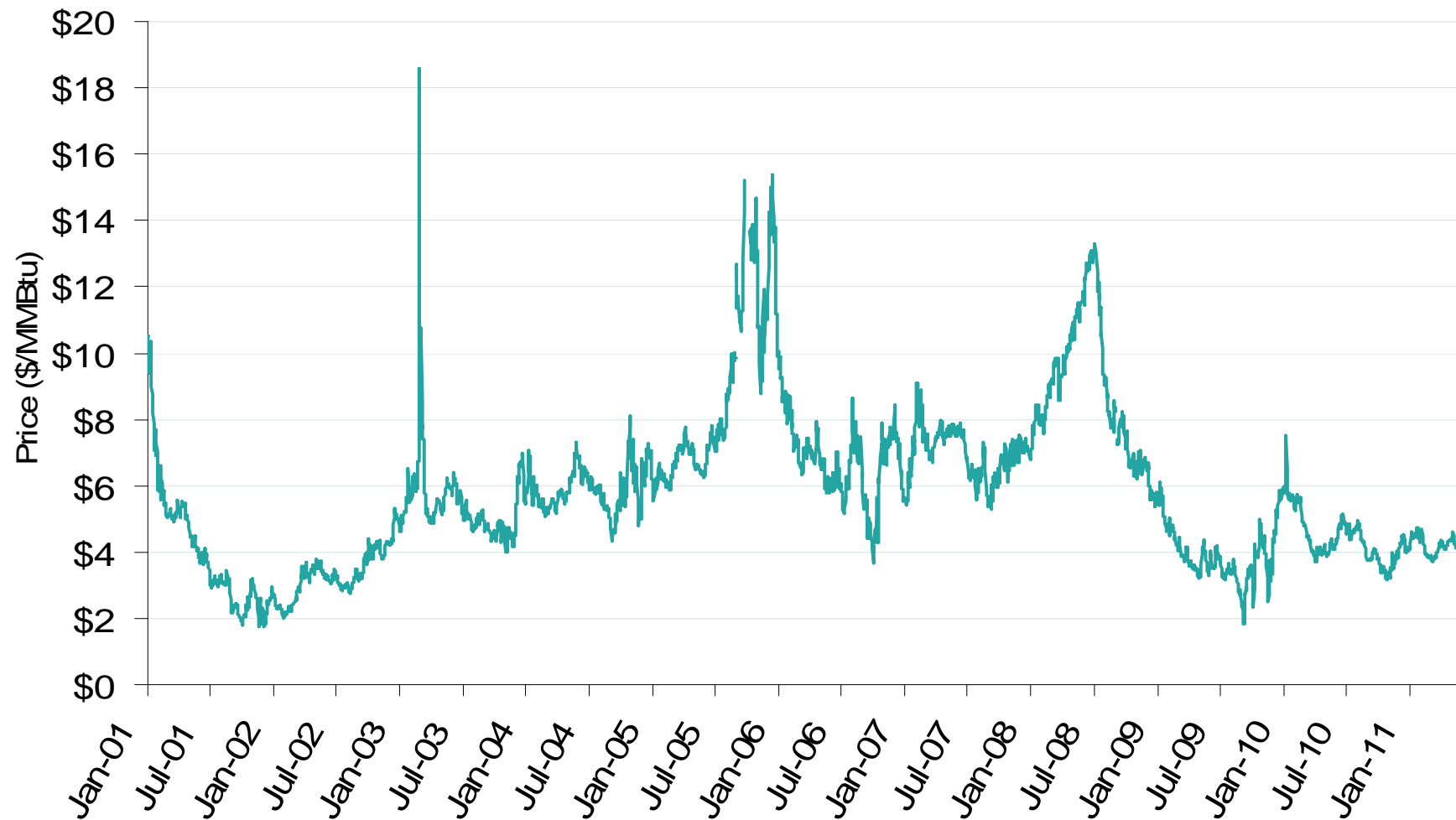
Source: Derived from *Bloomberg* and *ICE* data.

Updated: June 09, 2011

Natural Gas Market Overview: Henry Hub Spot Prices

Federal Energy Regulatory Commission • Market Oversight • www.ferc.gov/oversight

Henry Hub Natural Gas Daily Spot Prices, 2001-2011

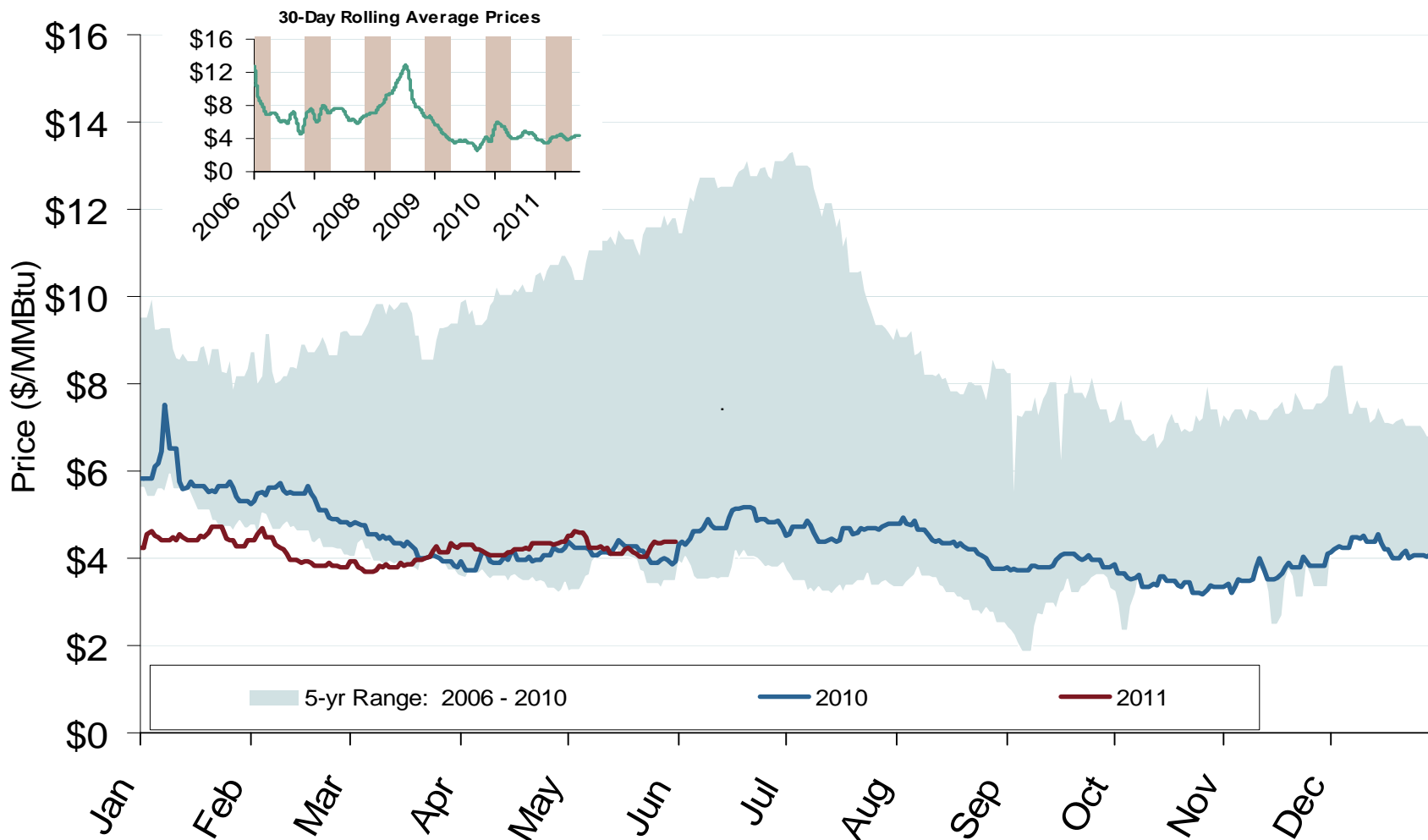


Source: Derived from Platts data.

Natural Gas Market Overview: 5 Year Range of Henry Hub Spot Prices

Federal Energy Regulatory Commission • Market Oversight • www.ferc.gov/oversight

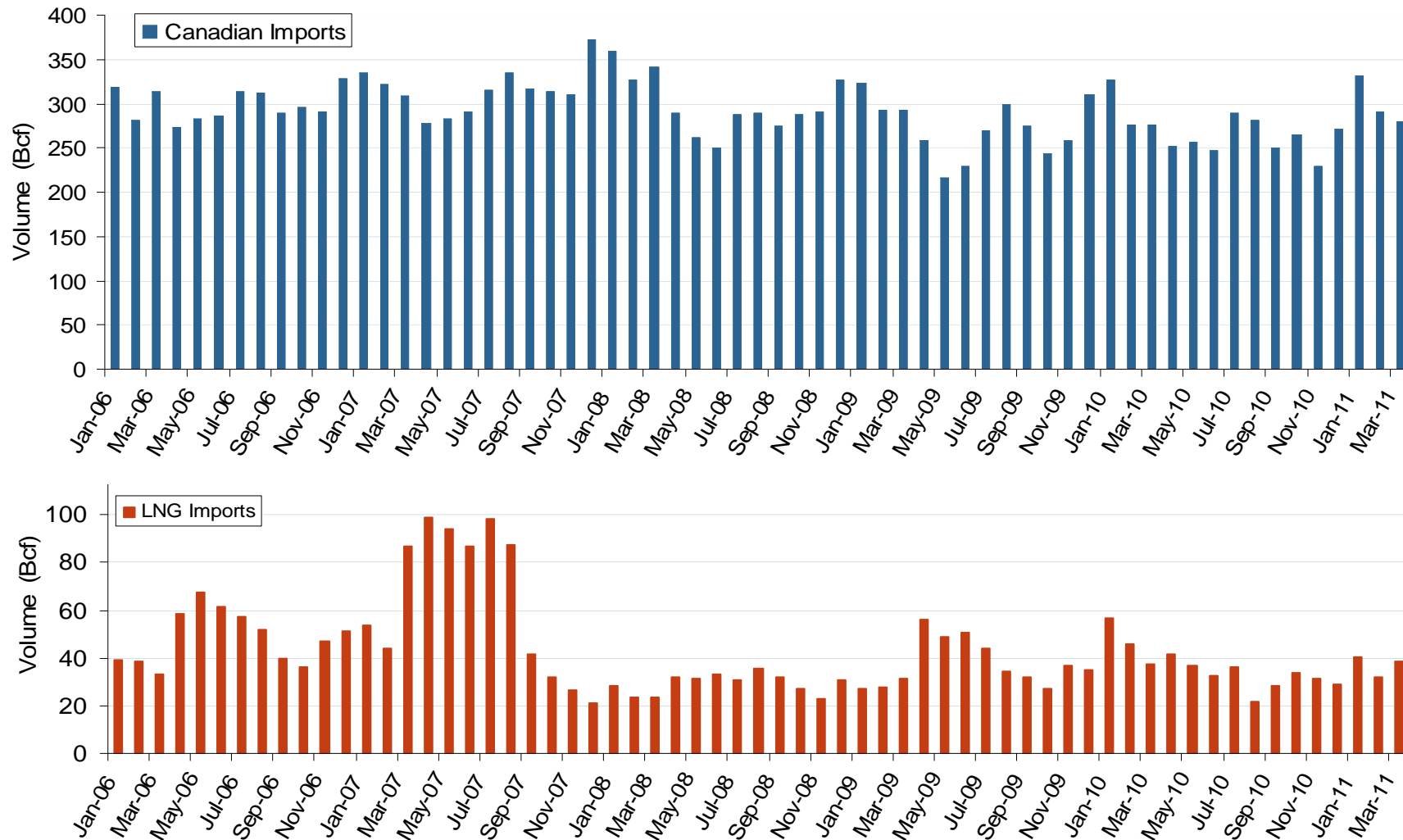
Henry Hub Natural Gas Daily Spot Prices



Source: Derived from *Platts* data.

Updated June 3, 2011

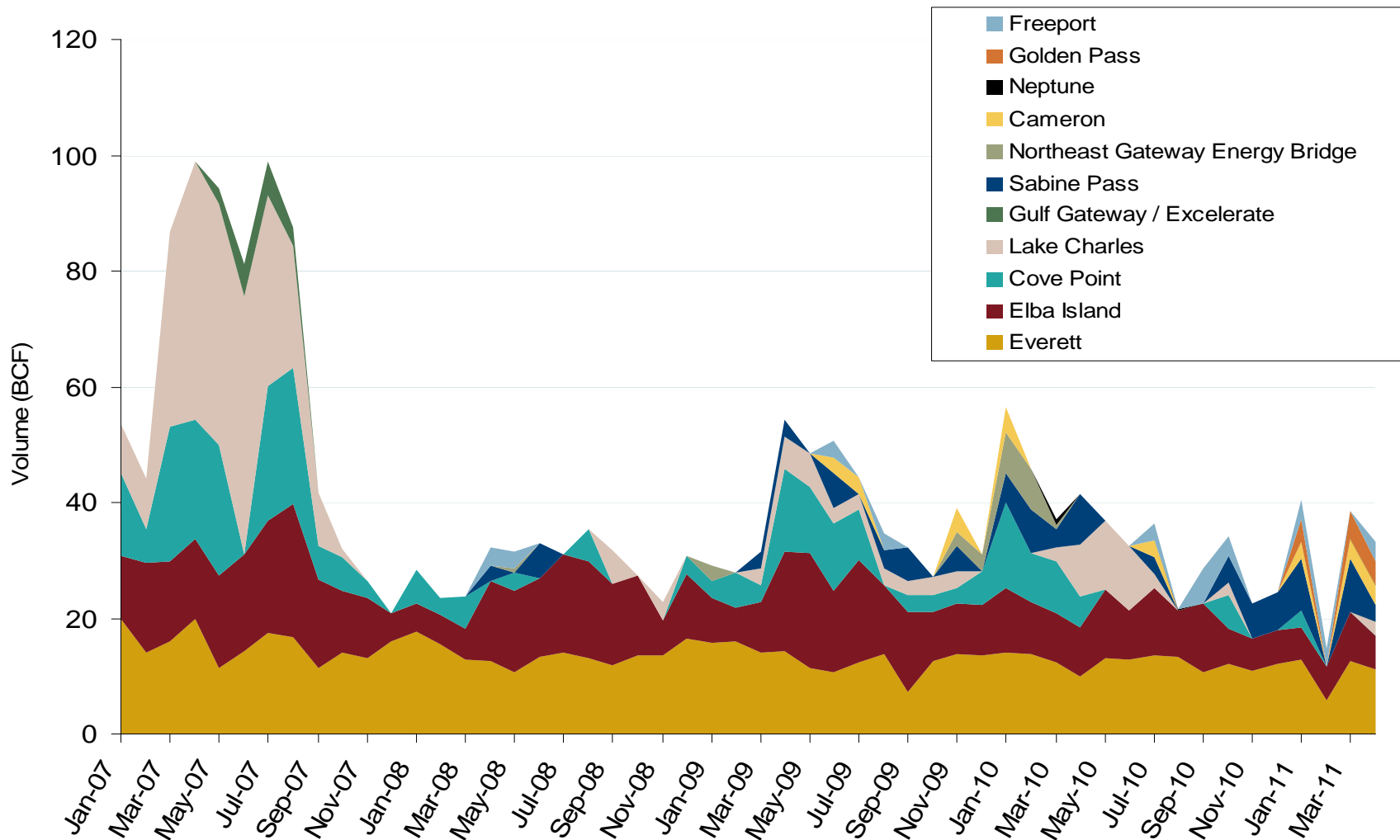
Canadian and LNG Natural Gas Imports Into the U.S.



Source: Derived from EIA Natural Gas Monthly data.
June 2011

Updated June 3, 2011

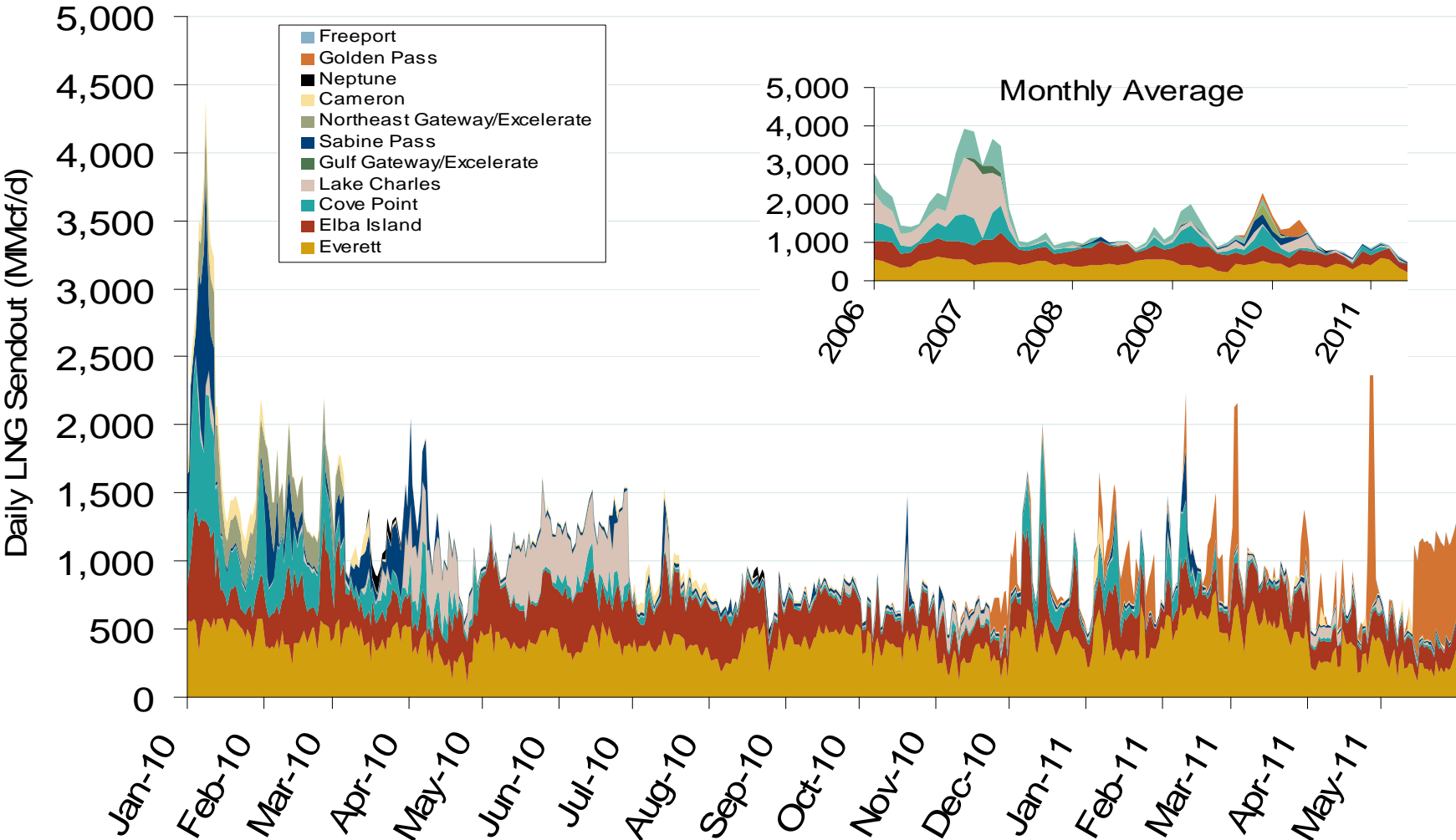
Monthly Gas Imports at Existing U.S. LNG Facilities



Source: Derived from DOE Office of Fossil Energy data.
June 2011

Updated June 3, 2011

Daily Gas Sendout from Existing LNG Facilities



Source: Derived from Bentek data.

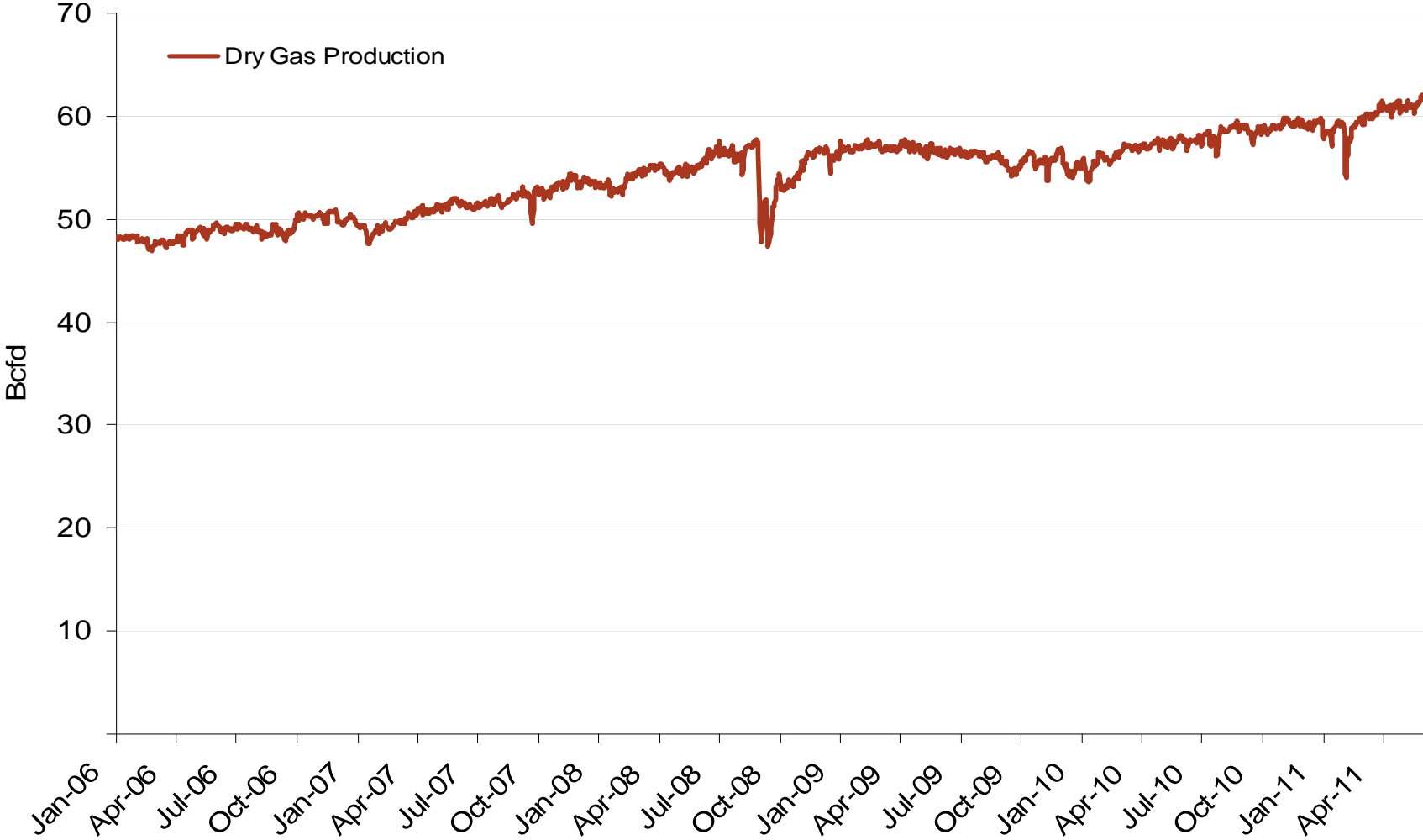
* Everett data includes flows onto the AGT and TGP interstate lines, plus estimates of flows to the Mystic 7 power plant, Keyspan Boston Gas, and LNG trucked out of the terminal. Excludes Freeport LNG which flows via intrastate pipelines.

Updated June 3, 2011

World LNG Estimated July 2011 Landed Prices



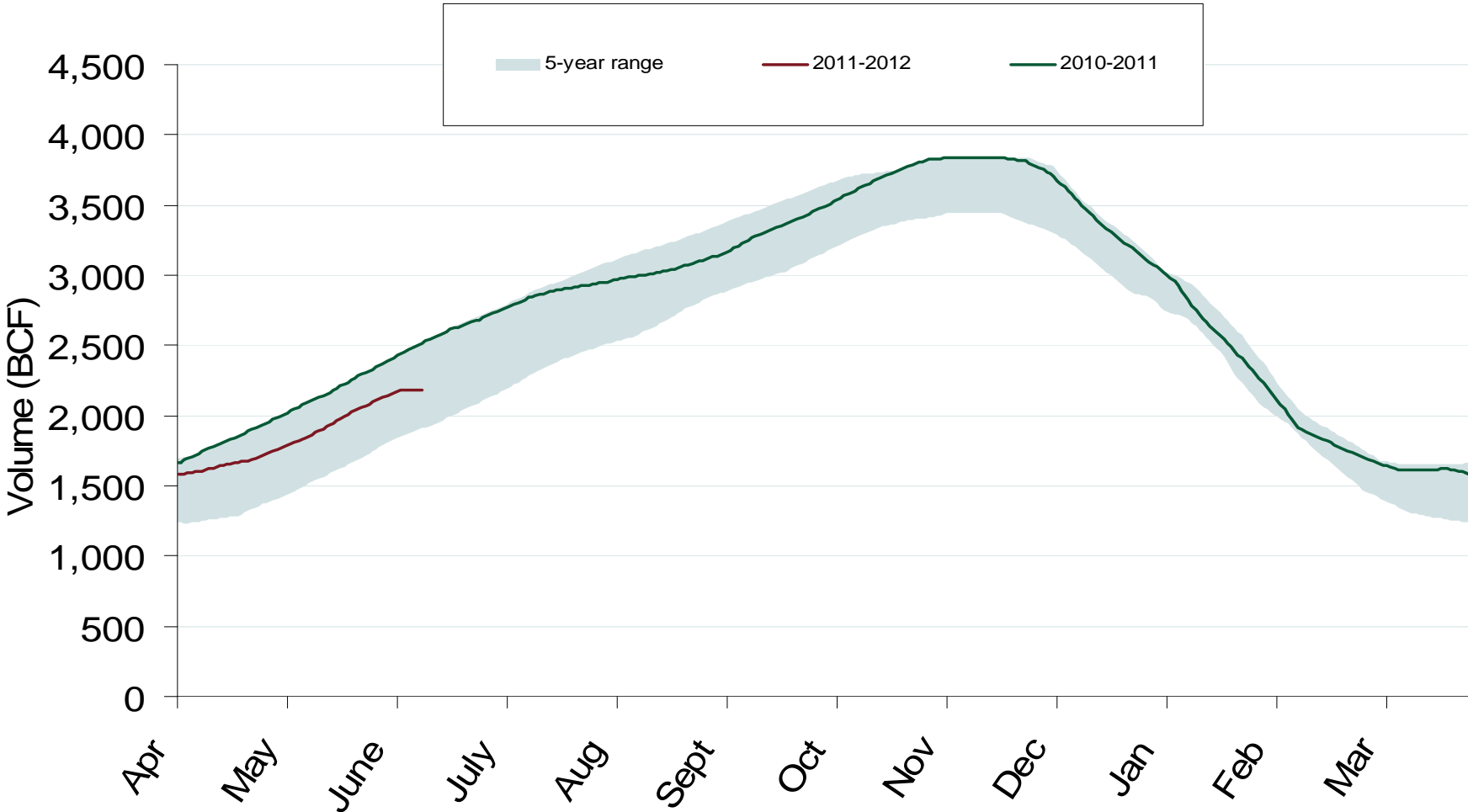
U.S. Dry Gas Production



Source: Derived from EIA and Bentek data.
June 2011

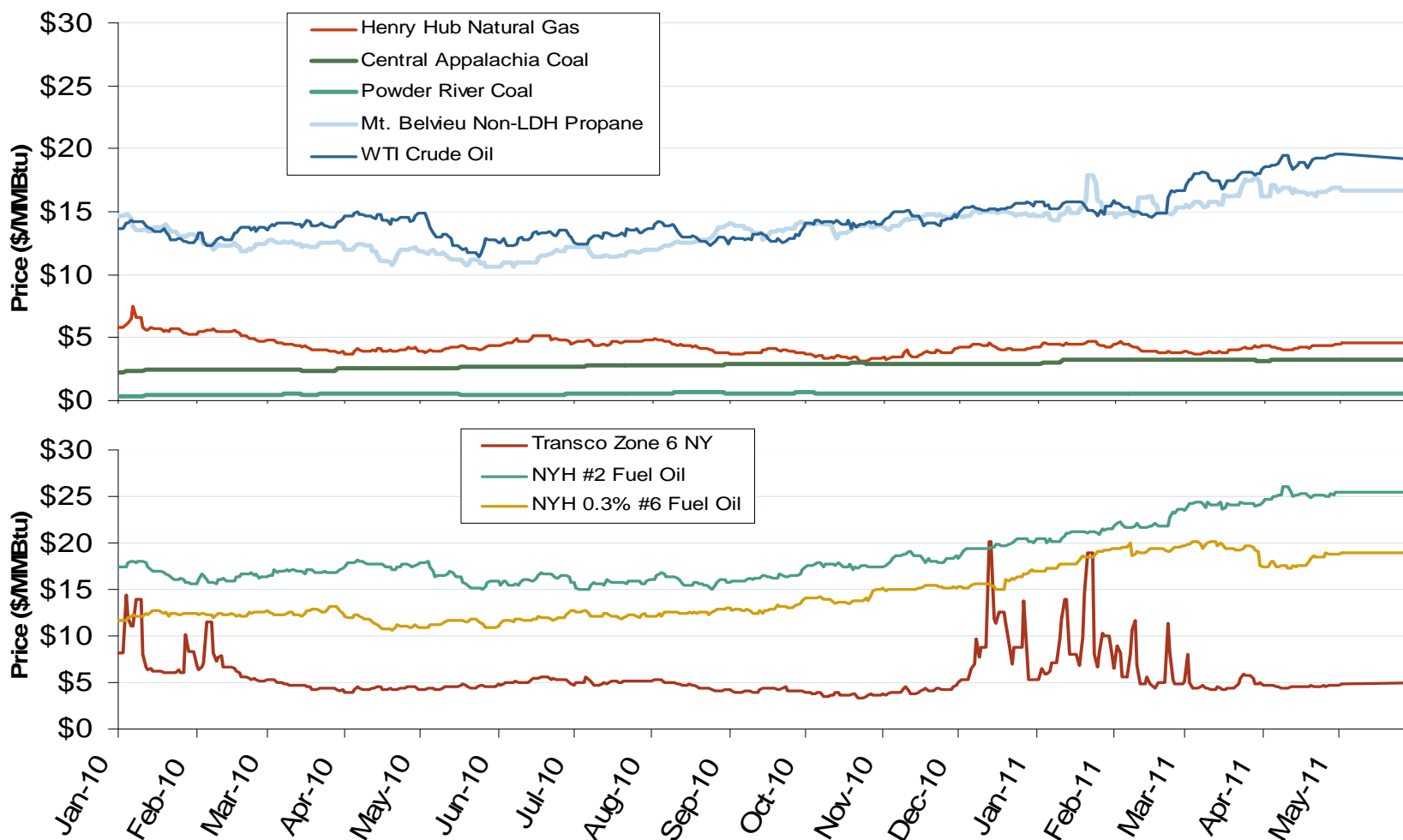
Updated June 3, 2011

Total U.S. Working Gas in Storage



Source: Derived from EIA data.

Oil, Coal and Natural Gas Daily Spot Prices

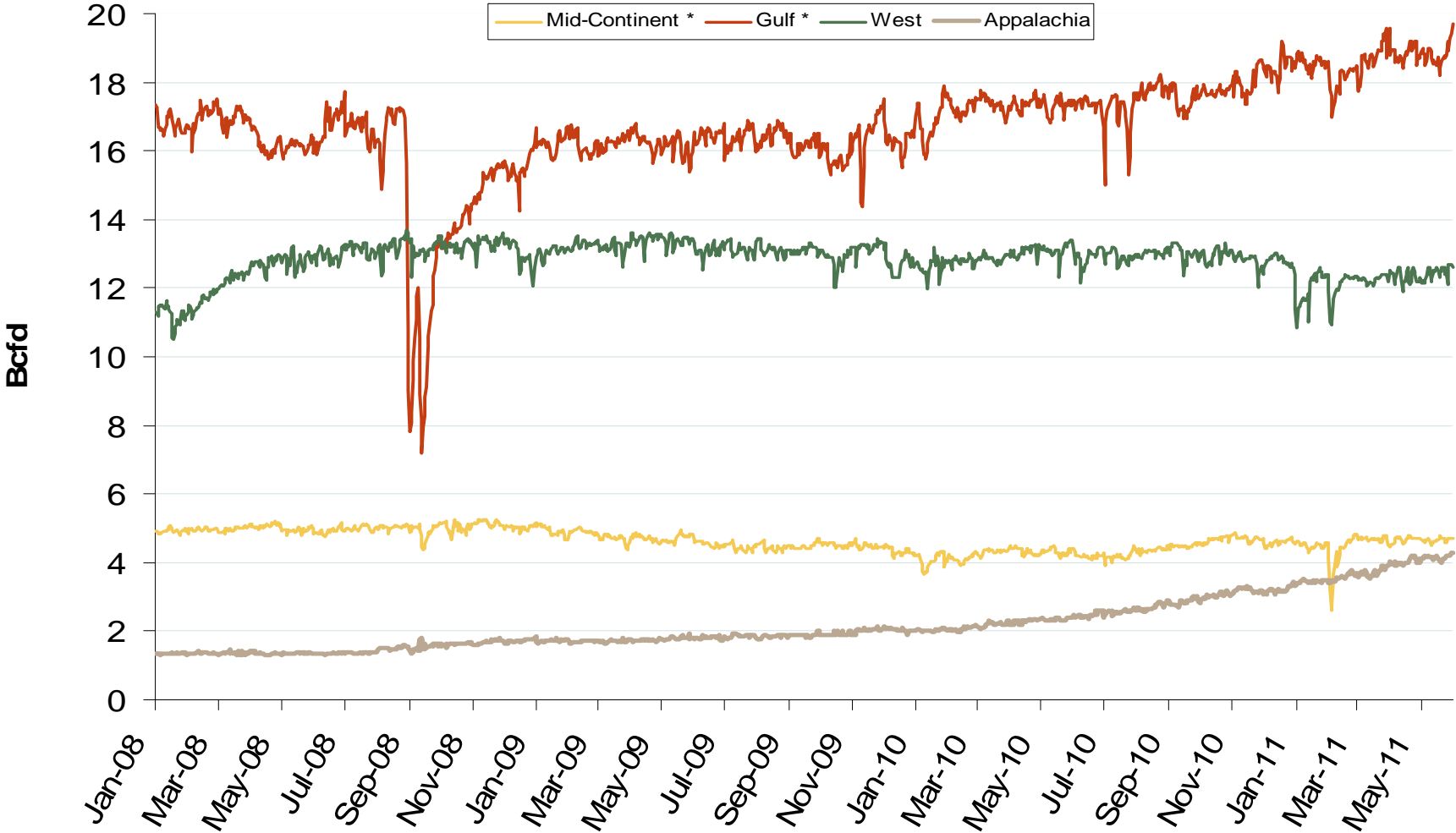


Source: Derived from ICE and Bloomberg data.

Note: Coal prices are quoted in \$/ton. Conversion factors to \$/MMBtu are based on contract specifications of 12,000 btus/pound for Central Appalachian coal and 8800 btus/pound for Powder River Basin coal.

Updated June 3, 2011

Regional Natural Gas Production



Source: Derived from Bentek data.

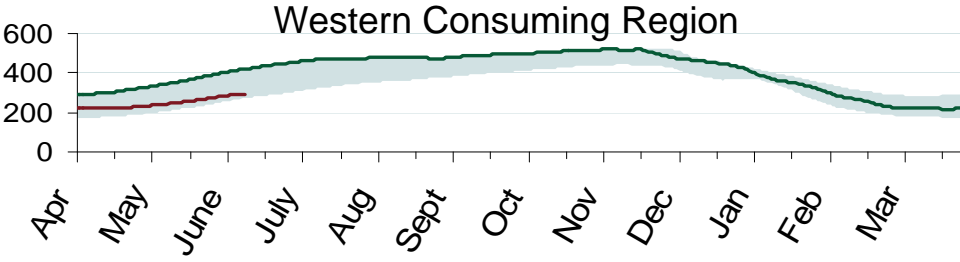
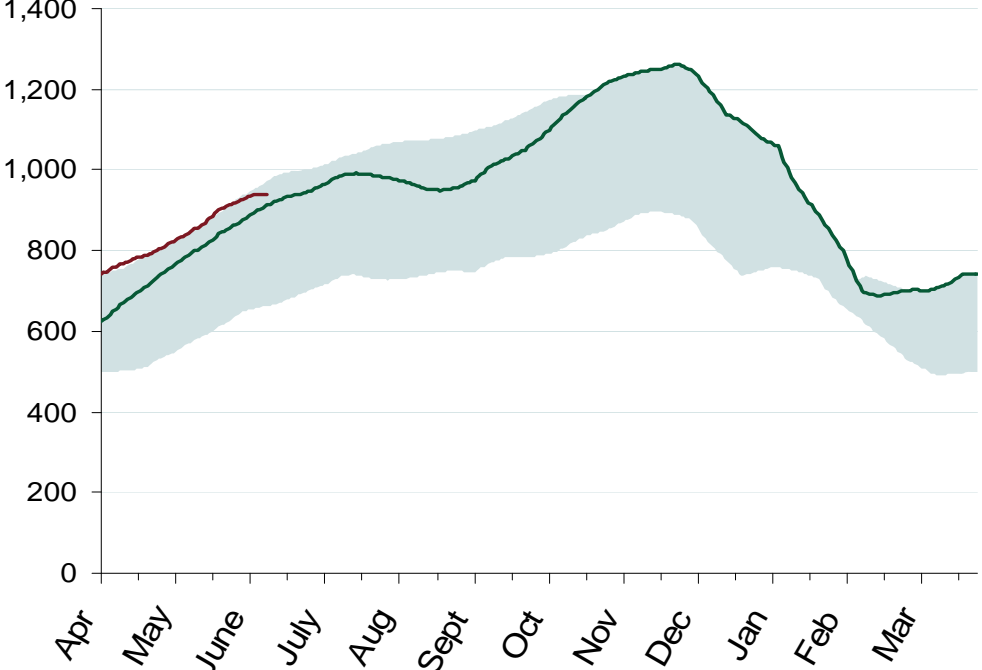
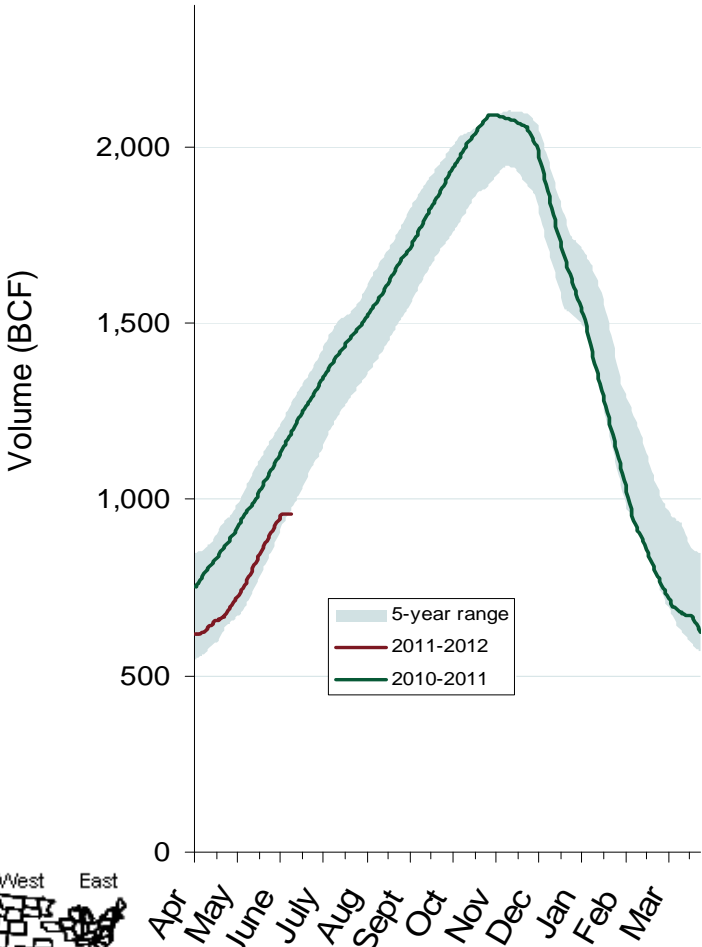
* On July 1, 2009 Bentek redefined its regions, moving some of the southern Midcontinent production to the Southeast, which is included in Gulf series.

Updated June 3, 2011

Regional Totals of Working Gas in Storage

Eastern Consuming Region

Producing Region

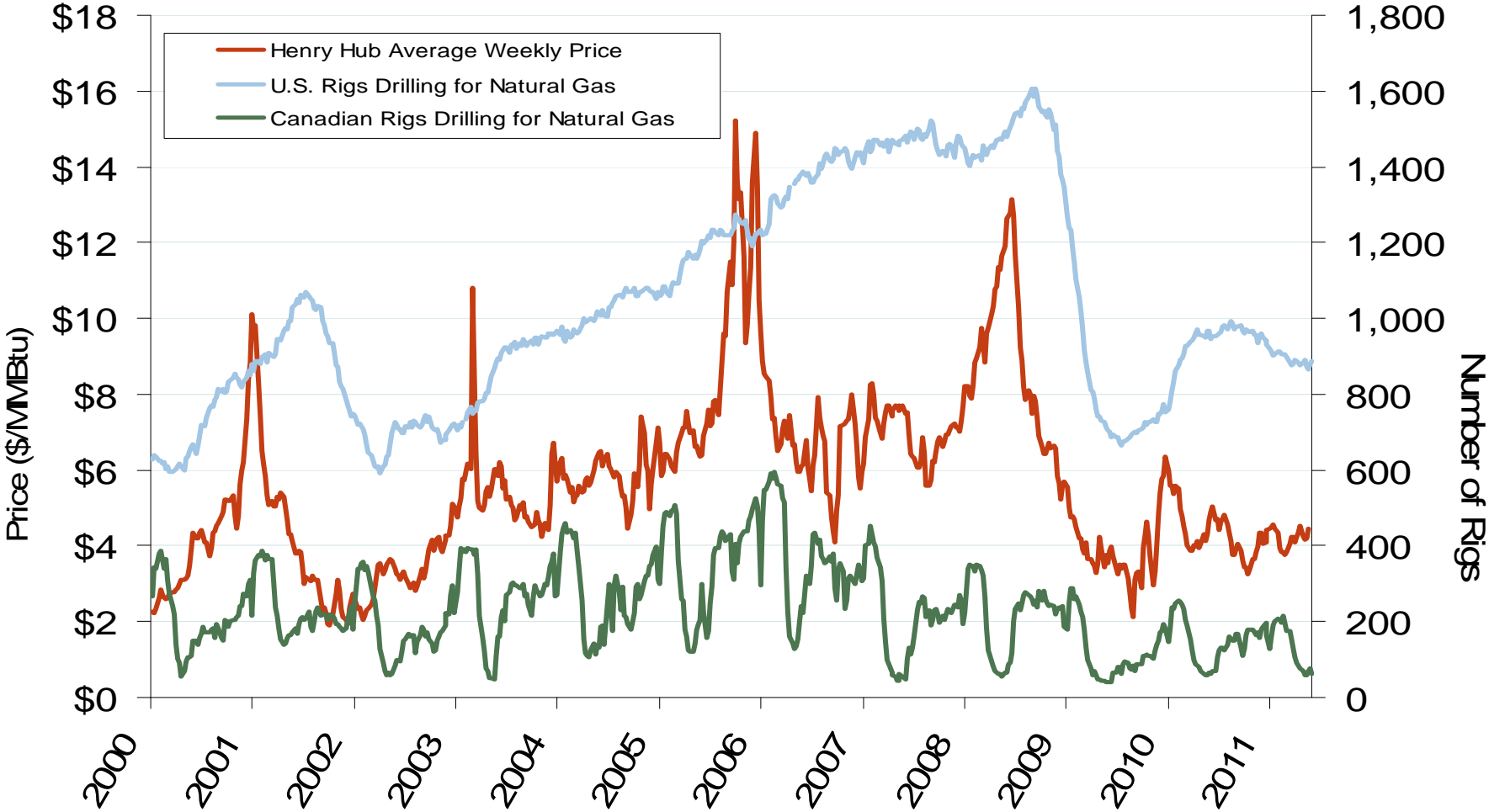


Source: Derived from EIA data. June 2011

Updated June 3, 2011

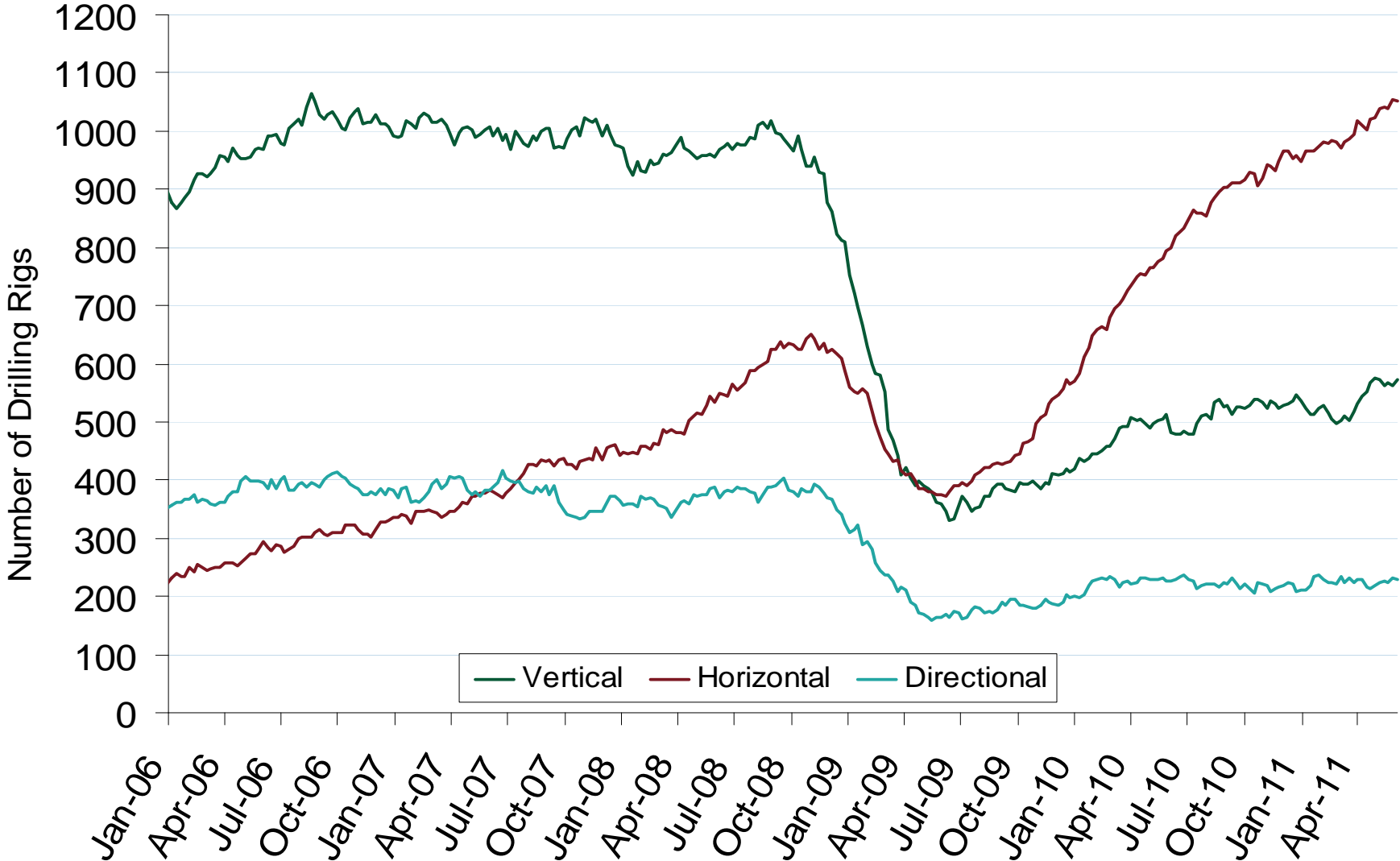
Federal Energy Regulatory Commission • Market Oversight • www.ferc.gov/oversight

U.S. and Canadian Natural Gas Drilling Rig Count and Daily Spot Prices



Source: Derived from *Platts* and *Baker Hughes* data.

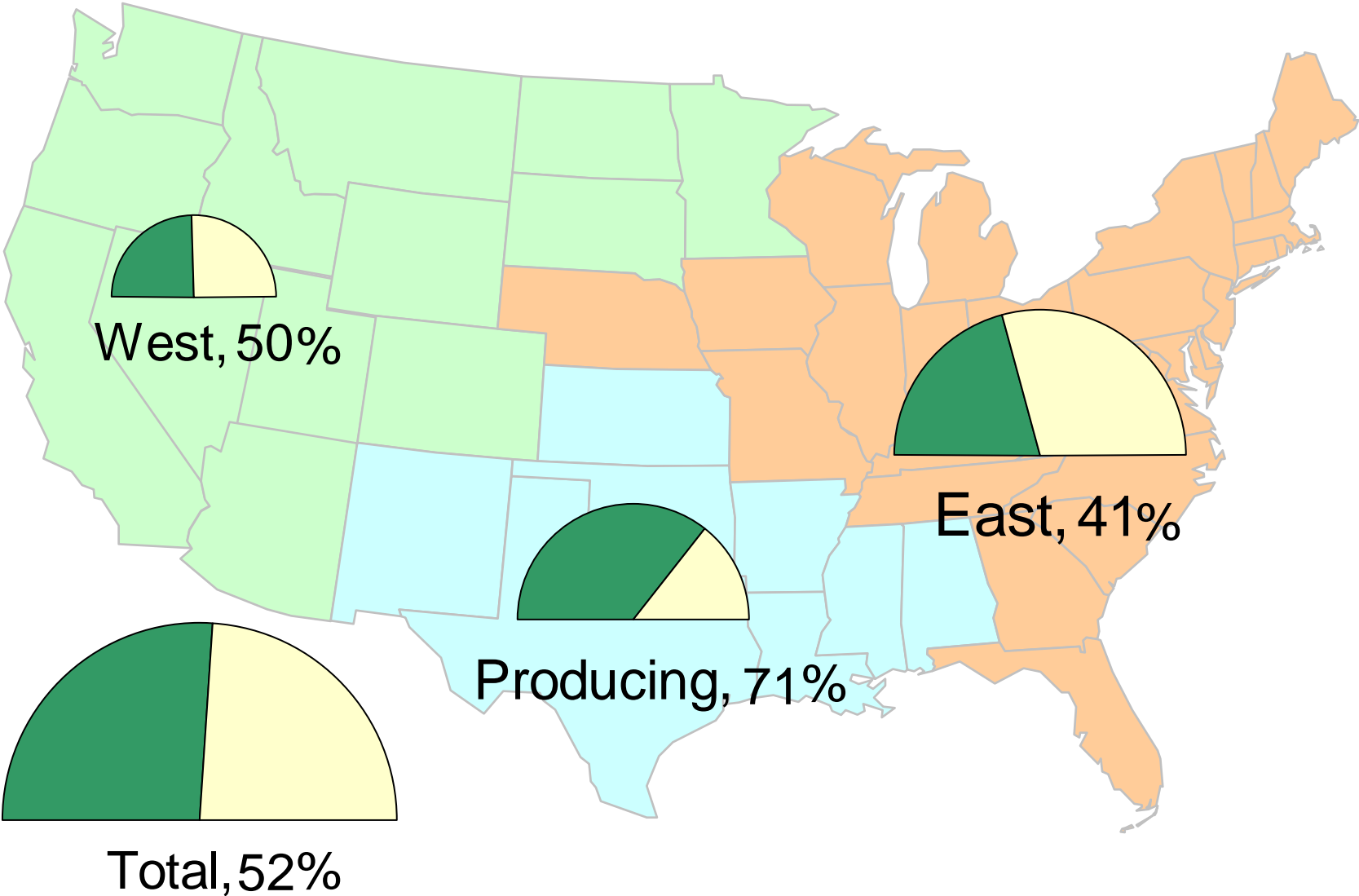
U.S. Oil and Natural Gas Drilling Rig Count by Type



Source: Derived from *Platts* and *Baker Hughes* data.

Updated June 3, 2011

Natural Gas Storage Inventories – May 27, 2011

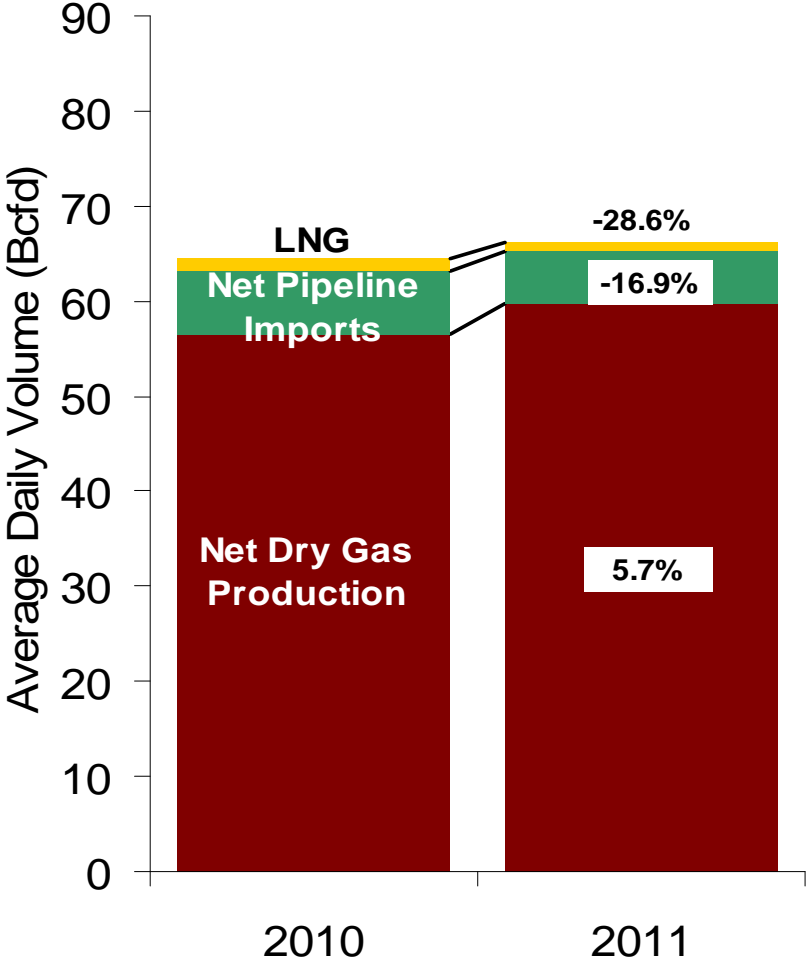


Source: Derived from EIA Storage and Estimated Working Gas Capacity data.

U.S. Natural Gas Supply and Demand 2010 vs. 2011: January - May

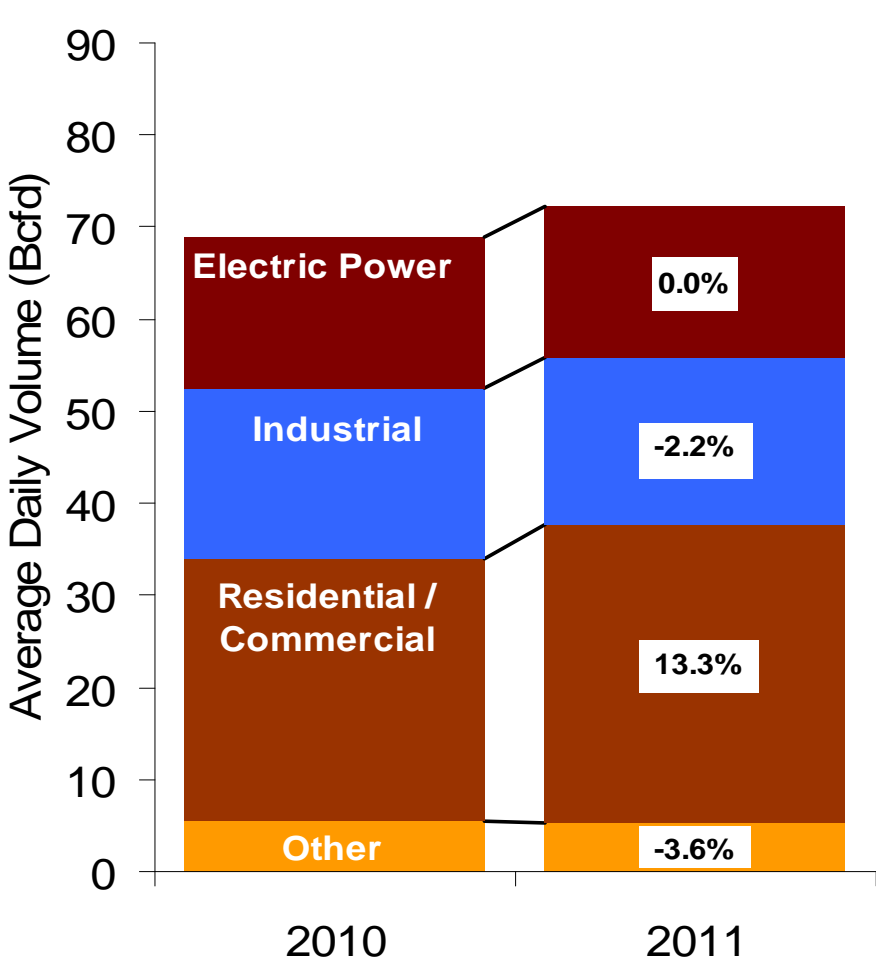
US Natural Gas Supply

Total Change in Supply 3.4%



US Natural Gas Demand

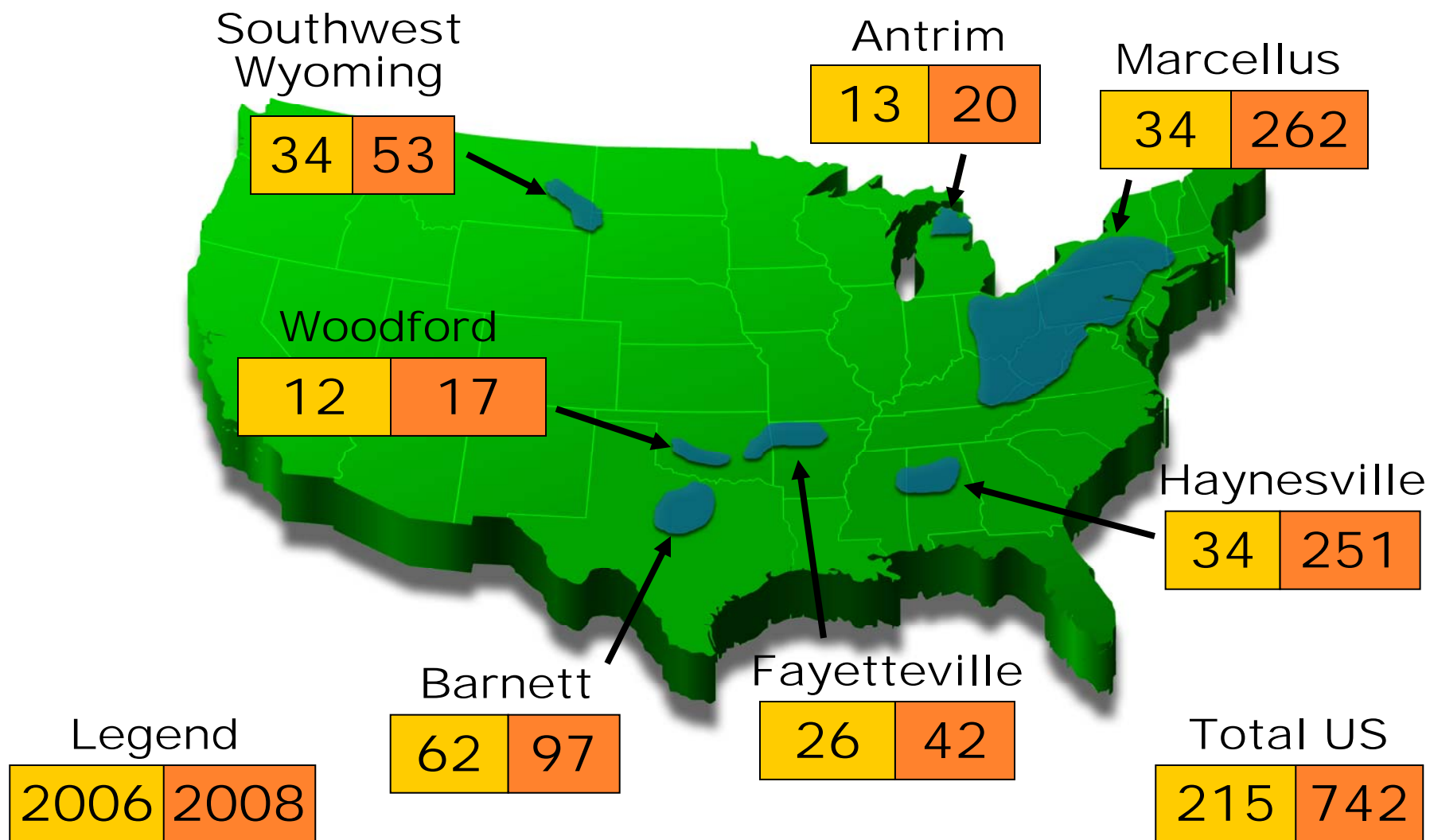
Total Change in Demand 4.6%



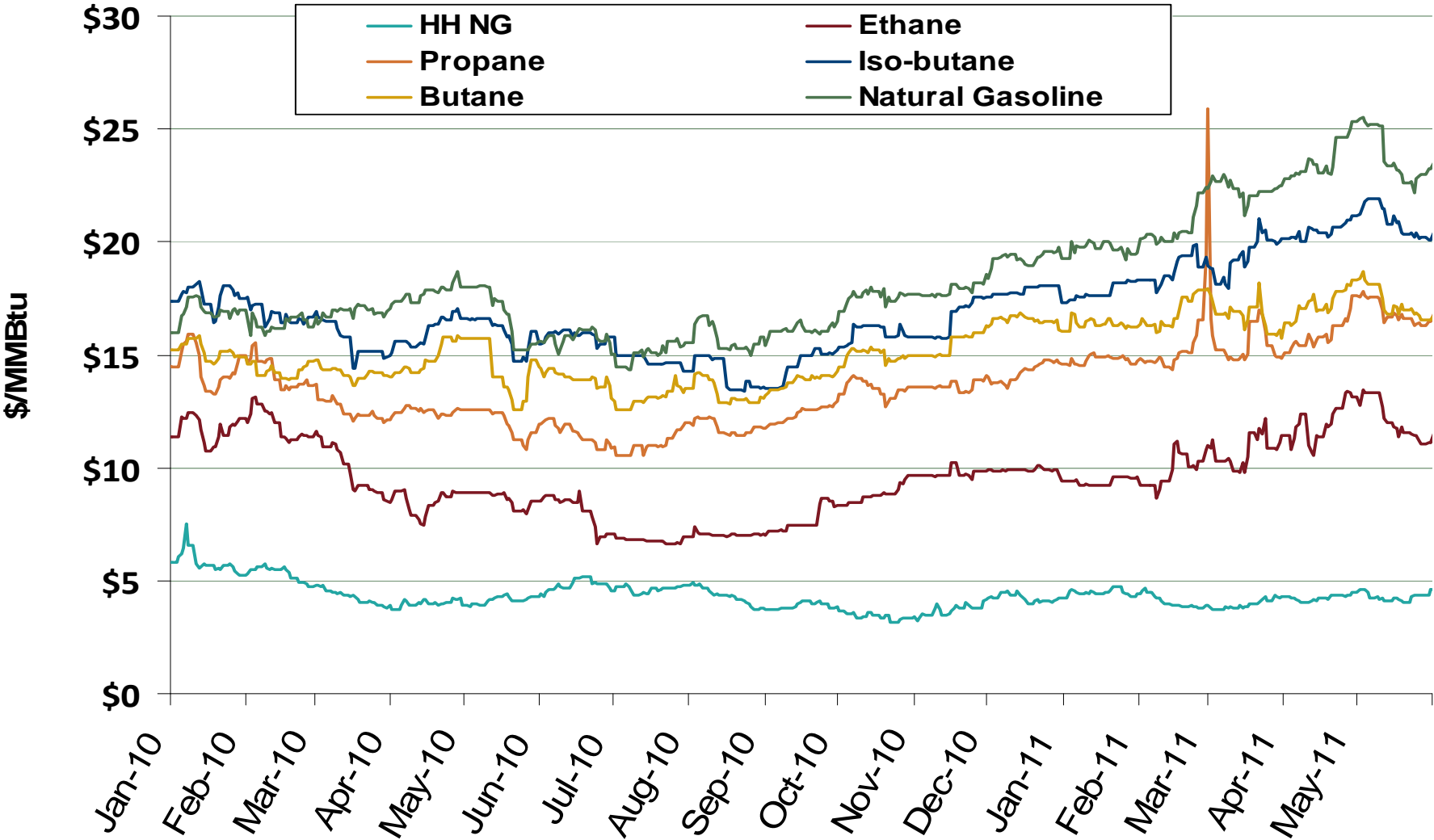
Source: Derived from Bentek data.
June 2011

Updated June 3, 2011

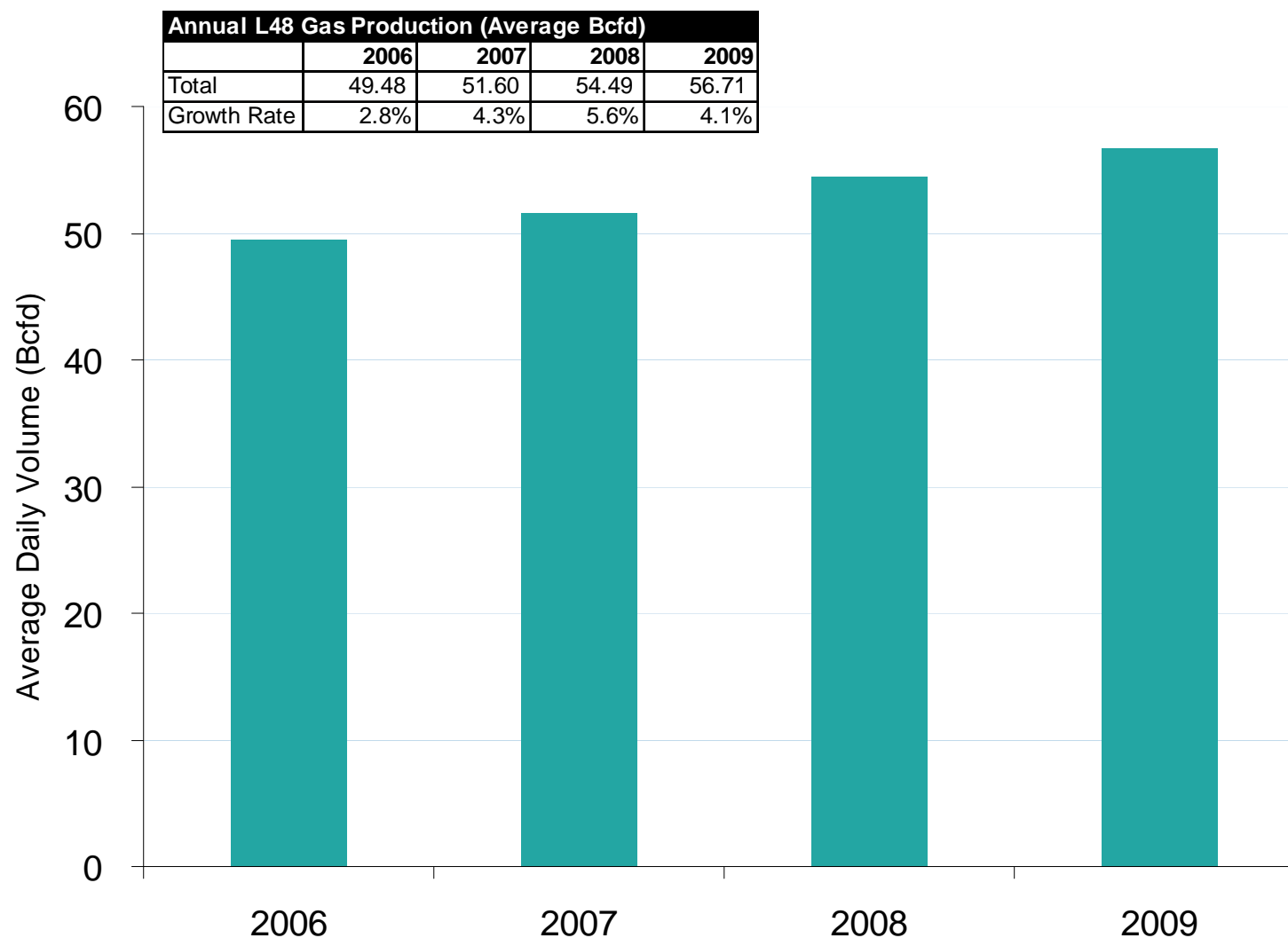
Estimated Recoverable NG For Select Shale Basins (TCF)



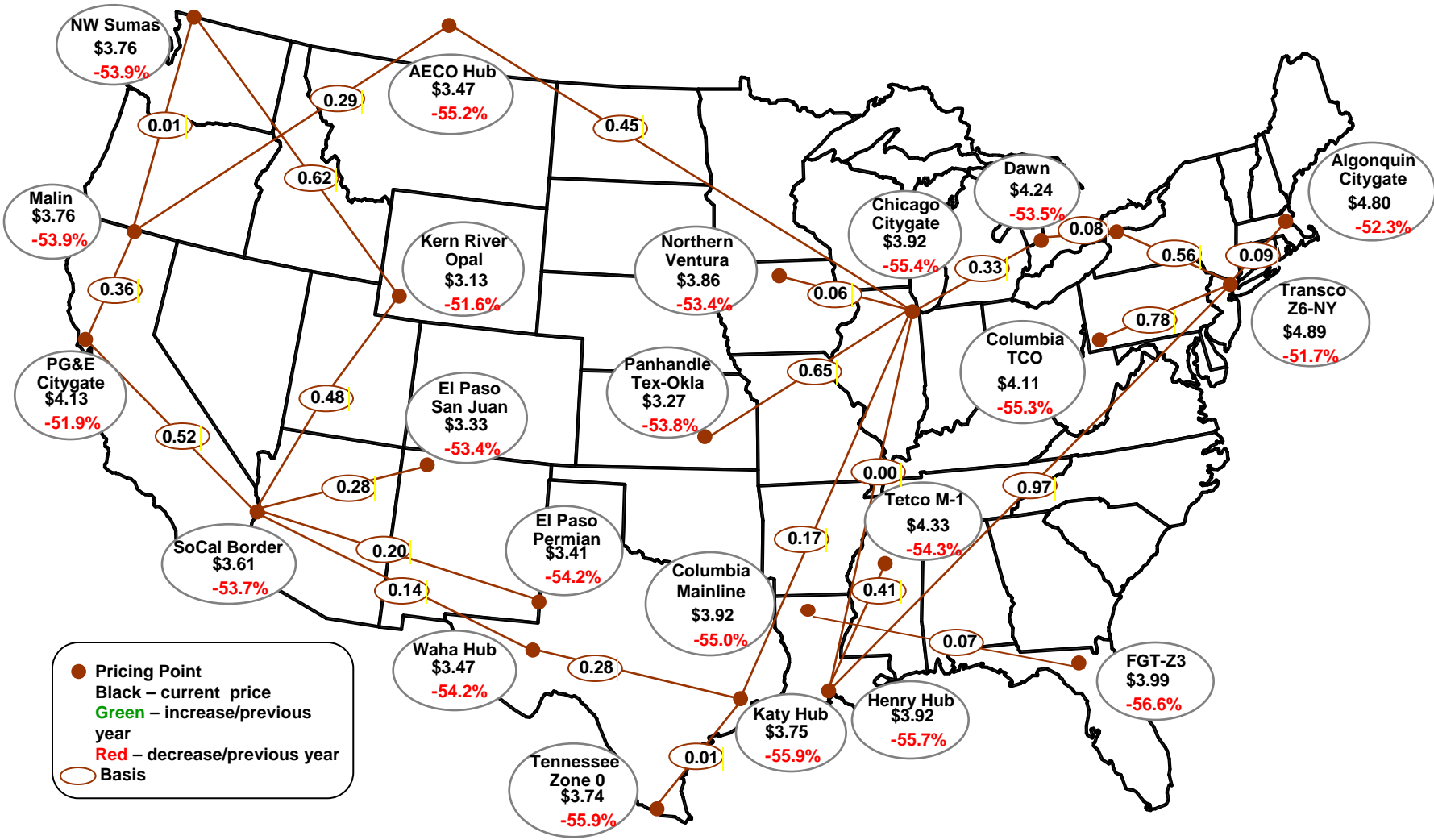
U.S. Natural Gas vs. Natural Gas Liquids (NGL) Prices



U.S. Dry Gas Production – Lower 48 States



Average Spot Gas Prices, 2009 (\$MMBtu)



Source: Derived from Platts data.