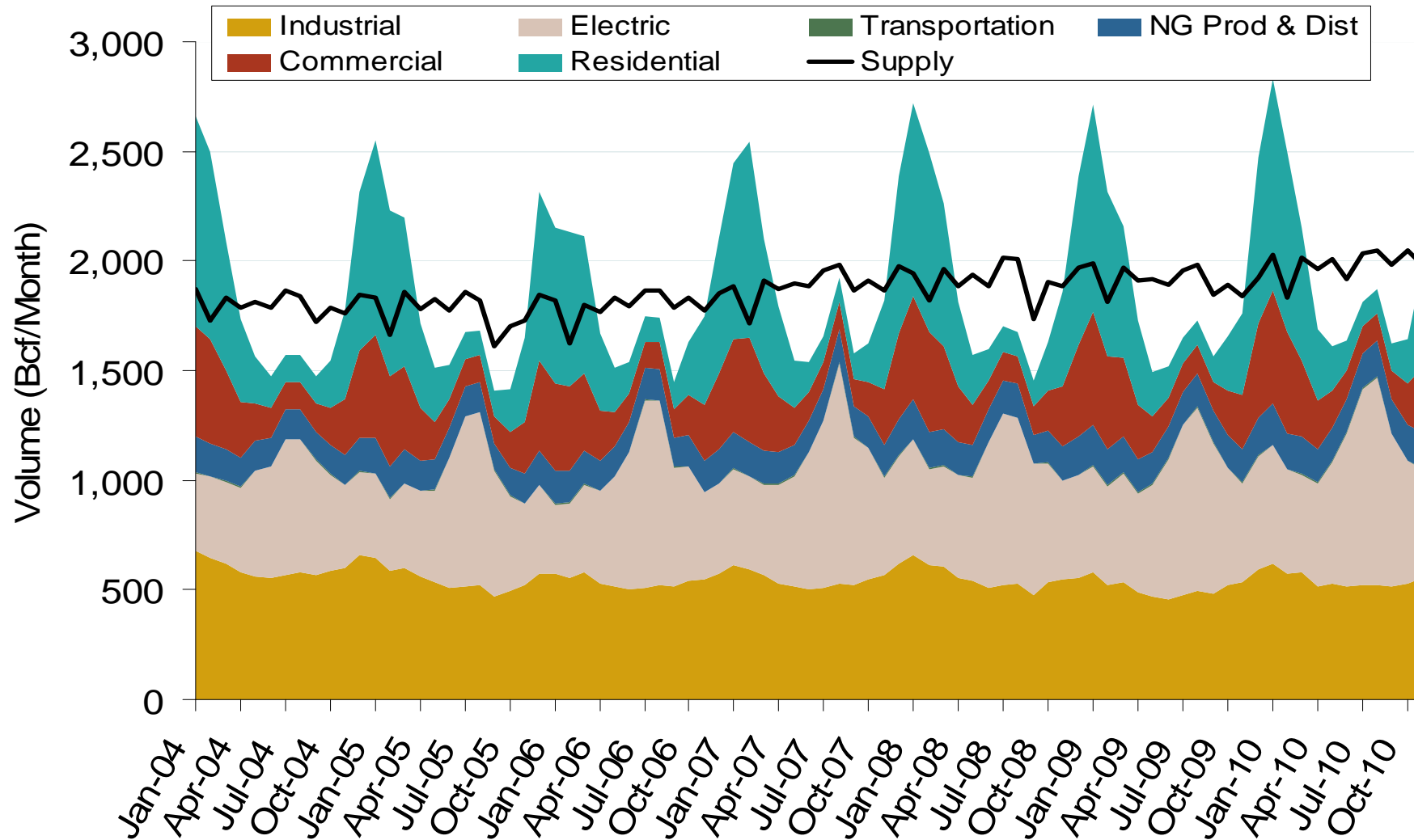


## Natural Gas Market National Overview



## Annual U.S. Natural Gas Consumption by Sector

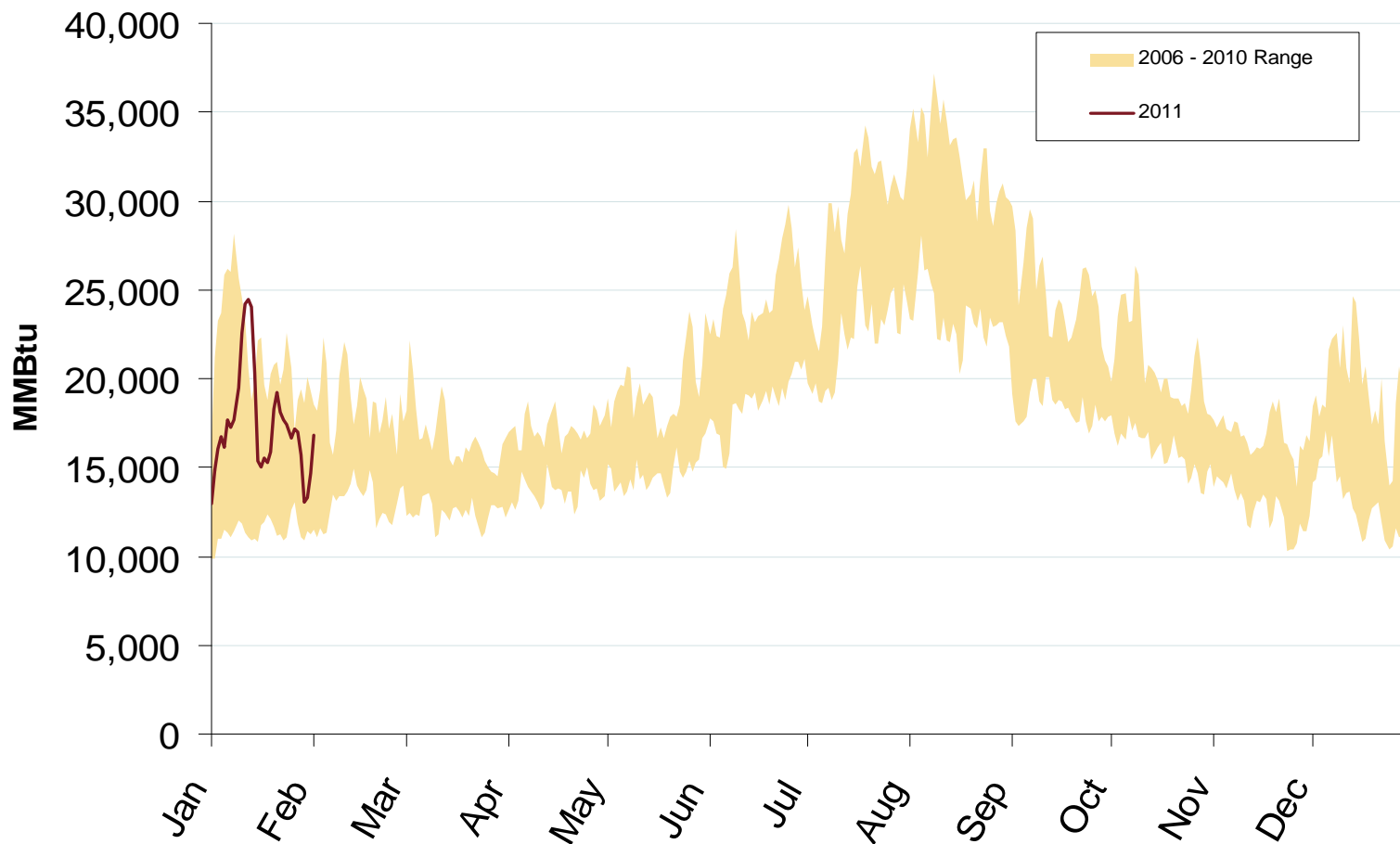


Note: Supply includes lower 48 state production, net pipeline imports, and LNG imports.

Source: Derived from *EIA data*  
February 2011

Updated: February 7, 2011

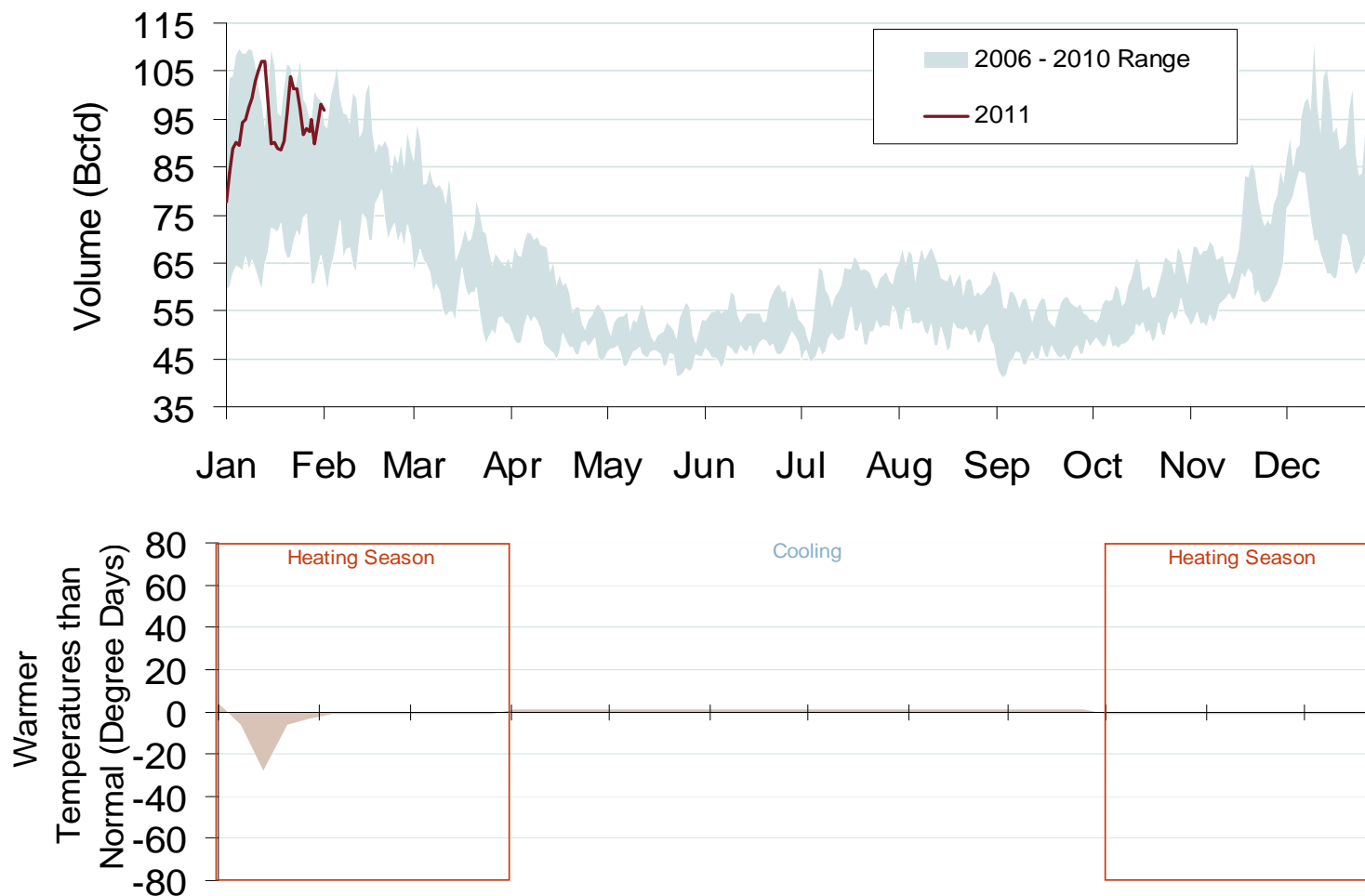
# U.S. Natural Gas Consumption for Power Generation



Source: Derived from *Bentek Energy* data.

Updated: February 03, 2011

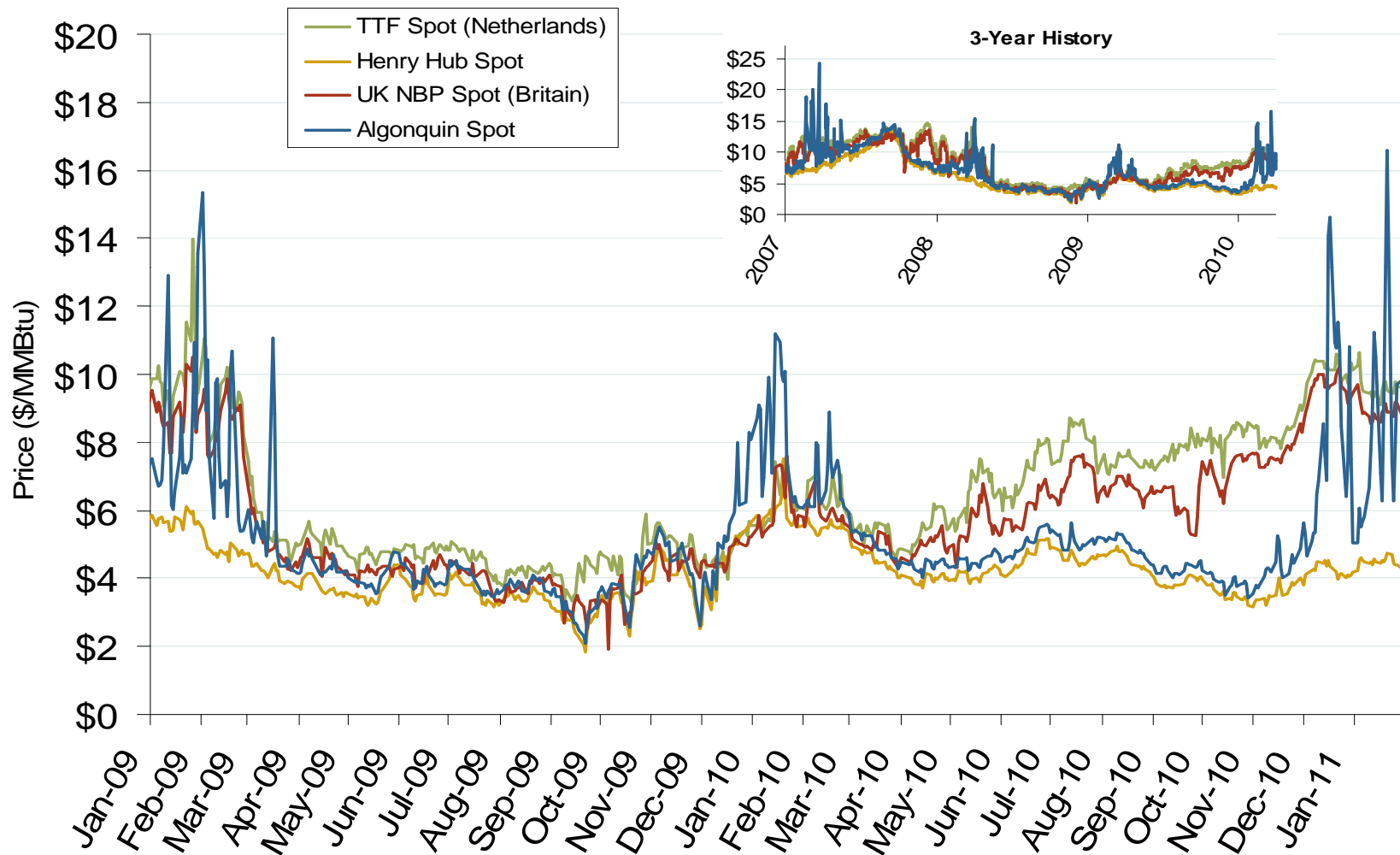
# Total U.S. Natural Gas Demand (All Sectors) and Temperatures



Source: Derived from *Bentek Energy* and *Weekly NOAA* data.

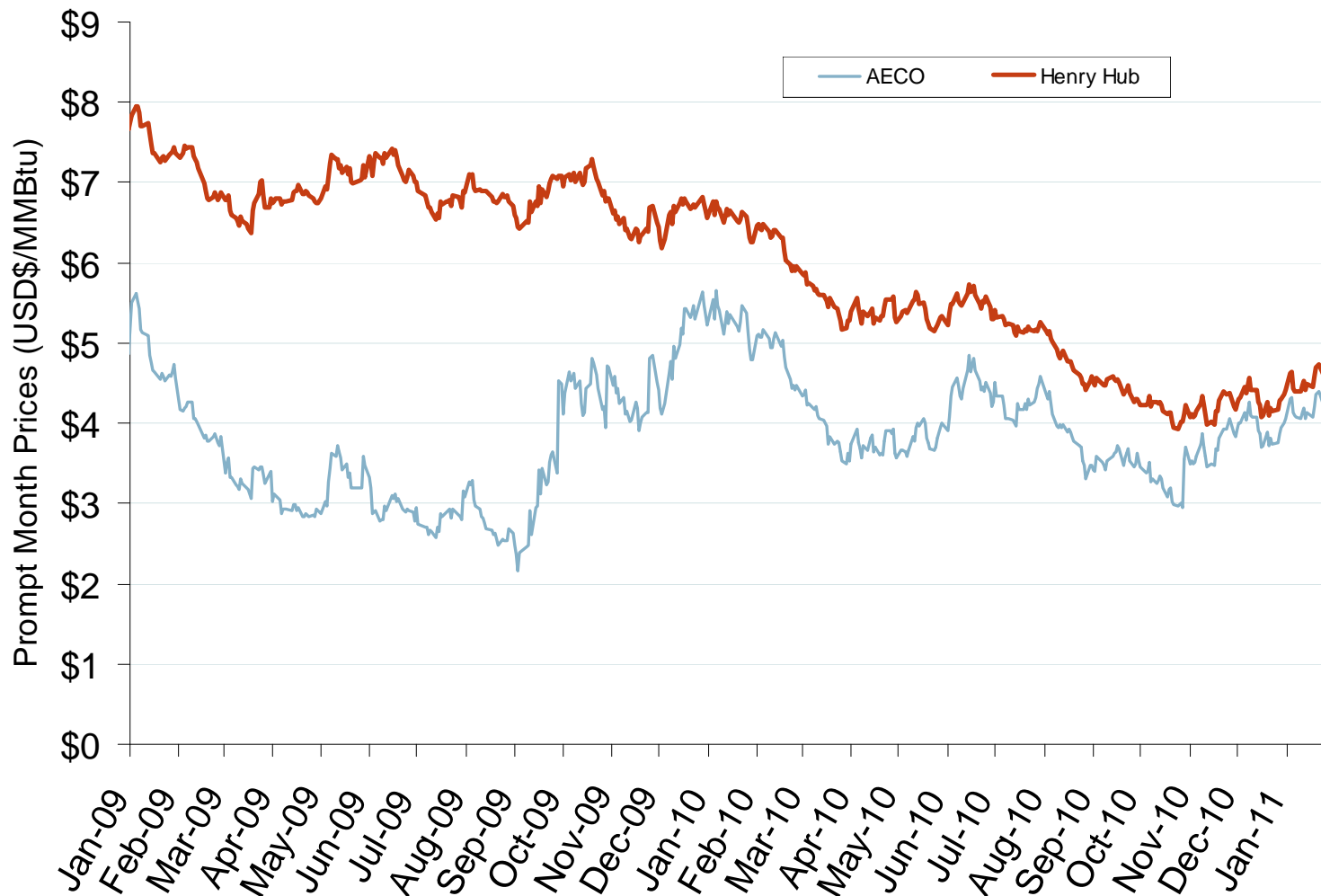
Updated: February 03, 2011

# Atlantic Basin European and US Spot Natural Gas Prices



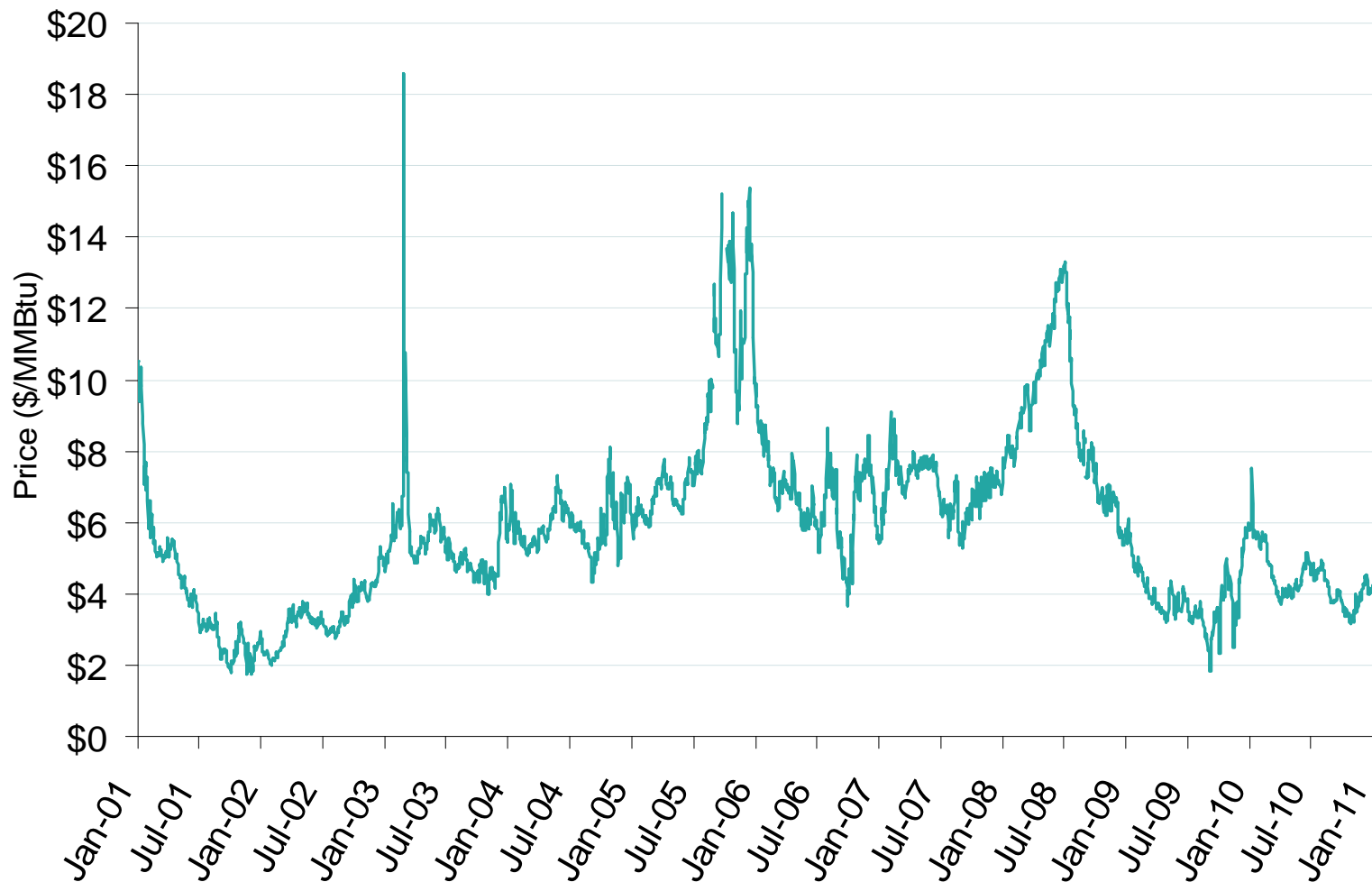
Source: Derived from *Bloomberg* and *ICE* data.  
February 2011

## Henry Hub and AECO Prompt-Month Futures Prices



Source: Derived from ICE data.  
February 2011

## Henry Hub Natural Gas Daily Spot Prices, 2001-2011



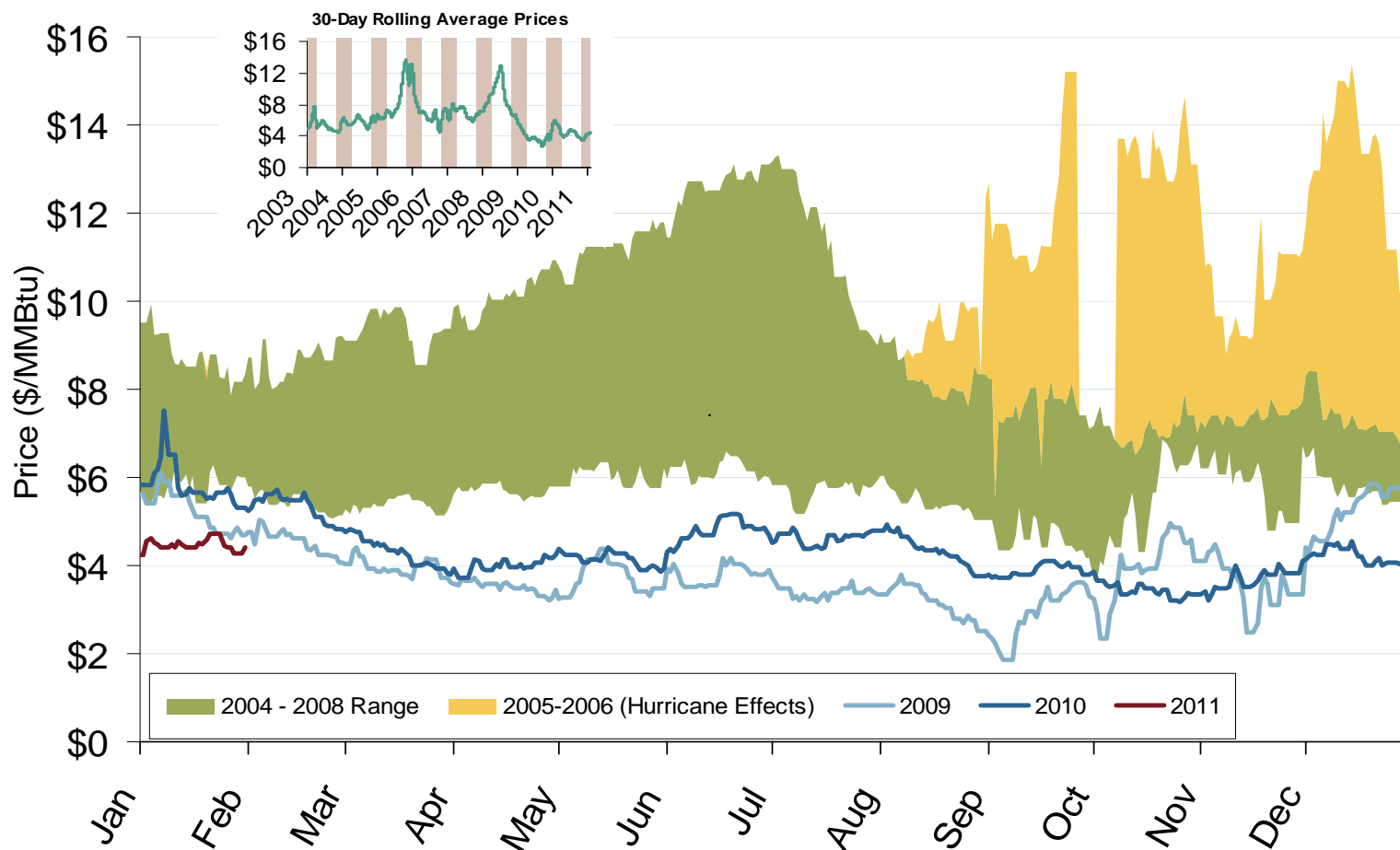
Source: Derived from Platts data.

Updated: February 3, 2011

Natural Gas Market Overview: 5 Year Range of Henry Hub Spot Prices

Federal Energy Regulatory Commission • Market Oversight • [www.ferc.gov/oversight](http://www.ferc.gov/oversight)

# Henry Hub Natural Gas Daily Spot Prices

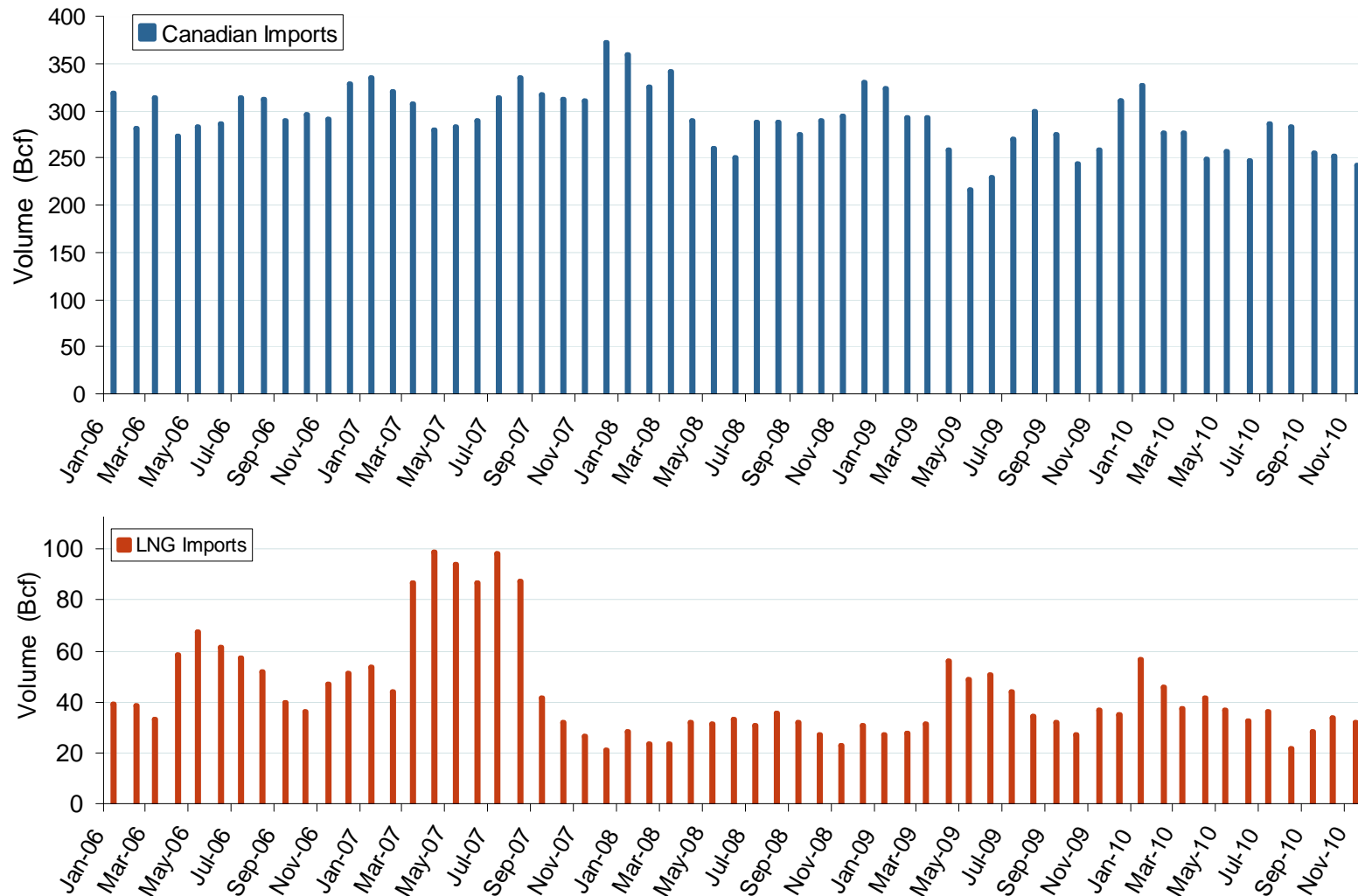


Source: Derived from *Platts* data.

Updated: February 3, 2011

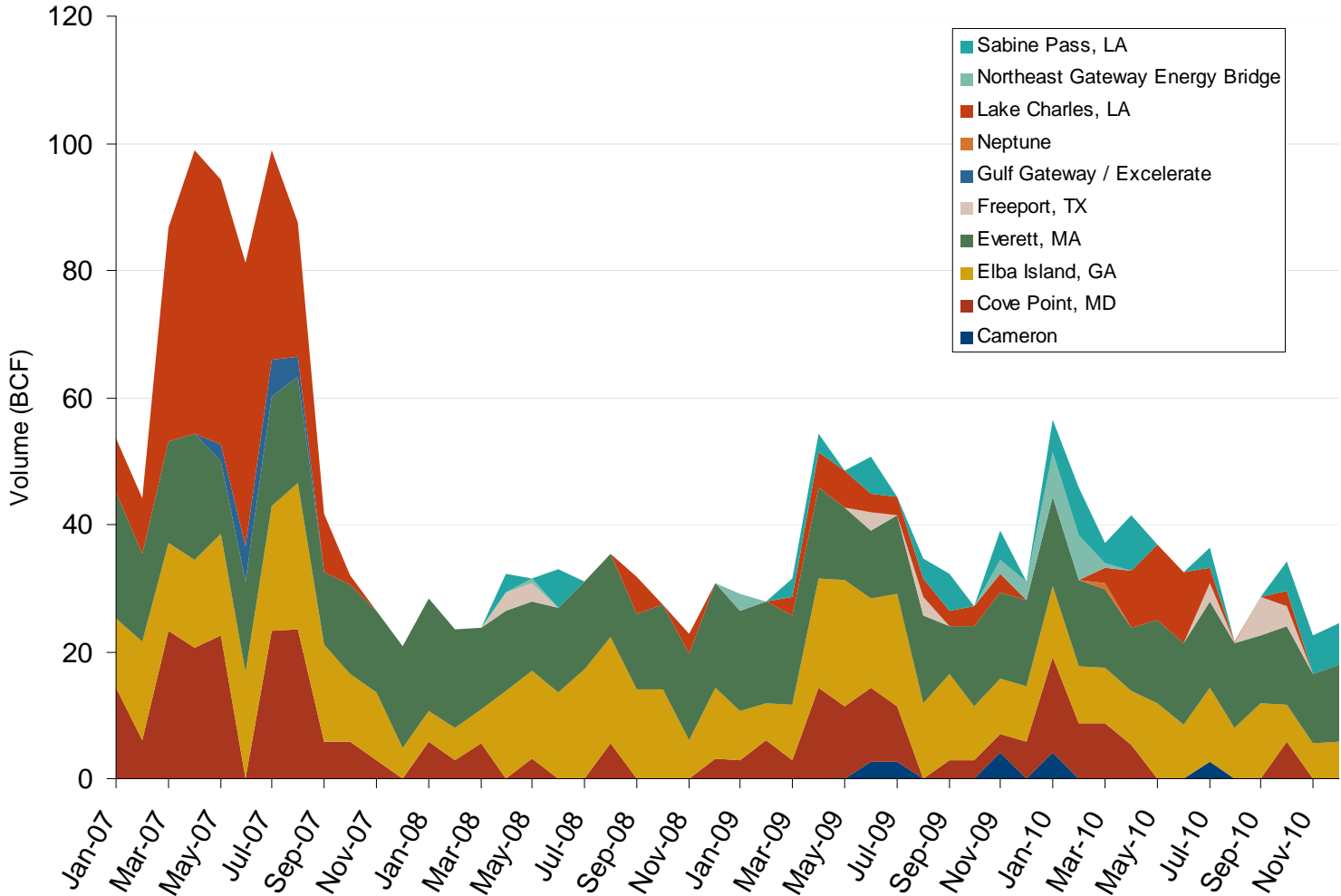


# Canadian and LNG Natural Gas Imports Into the U.S.



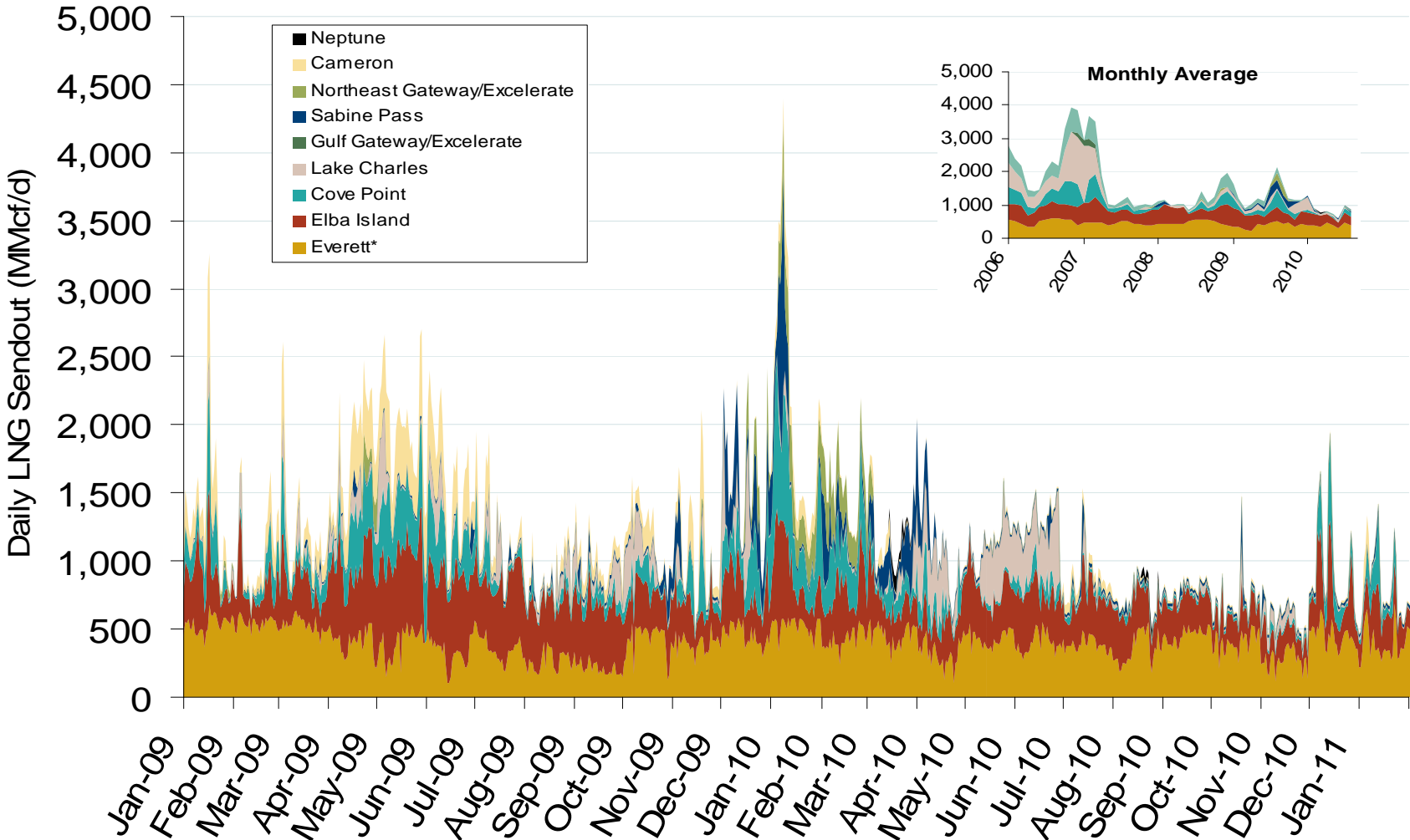
Source: Derived from EIA Natural Gas Monthly data.  
February 2011

# Monthly Gas Imports at Existing U.S. LNG Facilities



Source: Derived from DOE Office of Fossil Energy data.  
February 2011

# Daily Gas Sendout from Existing LNG Facilities



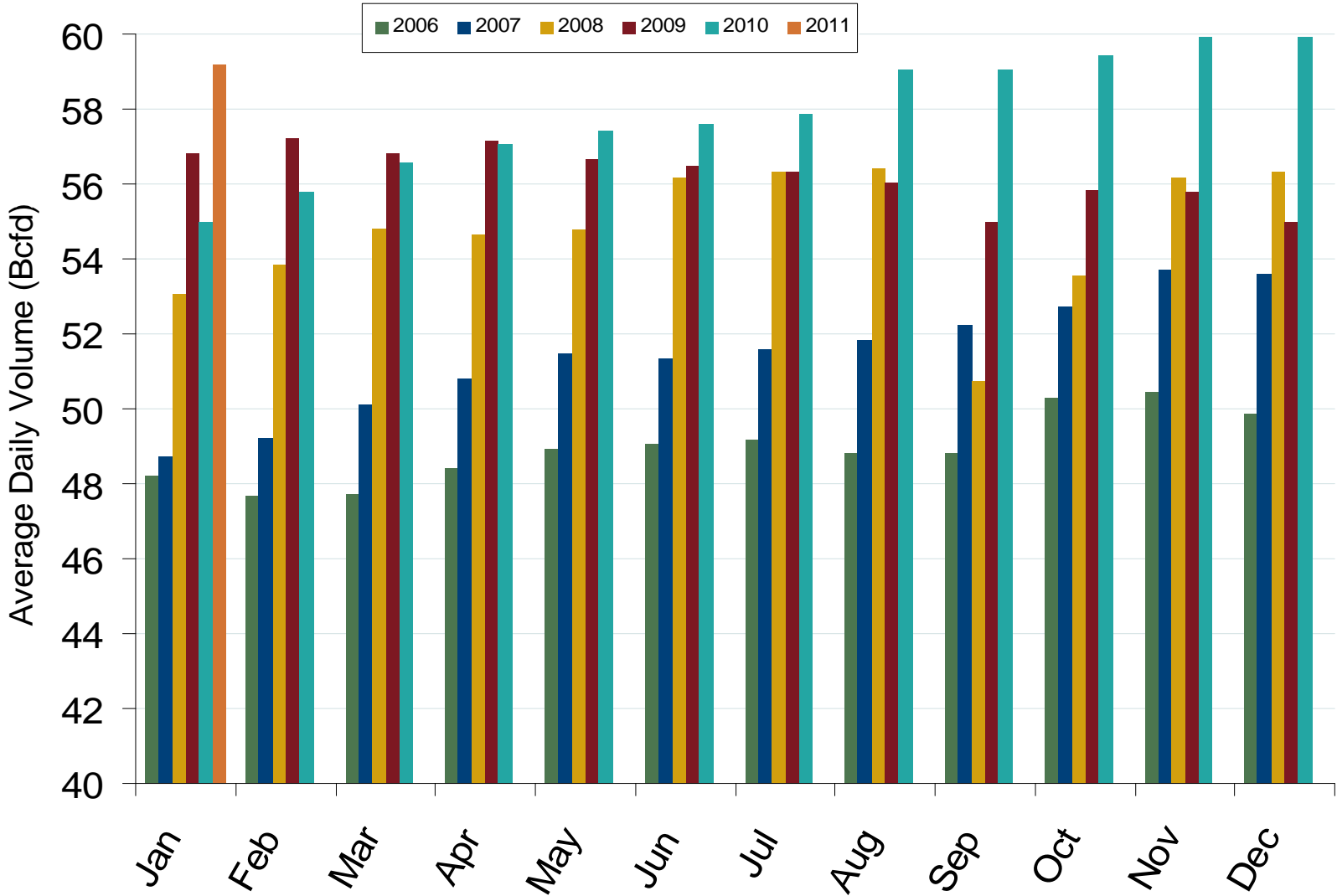
Source: Derived from *Bentek* data.

\* Everett data includes flows onto the AGT and TGP interstate lines, plus estimates of flows to the Mystic 7 power plant, Keyspan Boston Gas, and LNG trucked out of the terminal. Excludes Freeport LNG which flows via intrastate pipelines.  
February 2011

## World LNG Estimated March 2011 Landed Prices



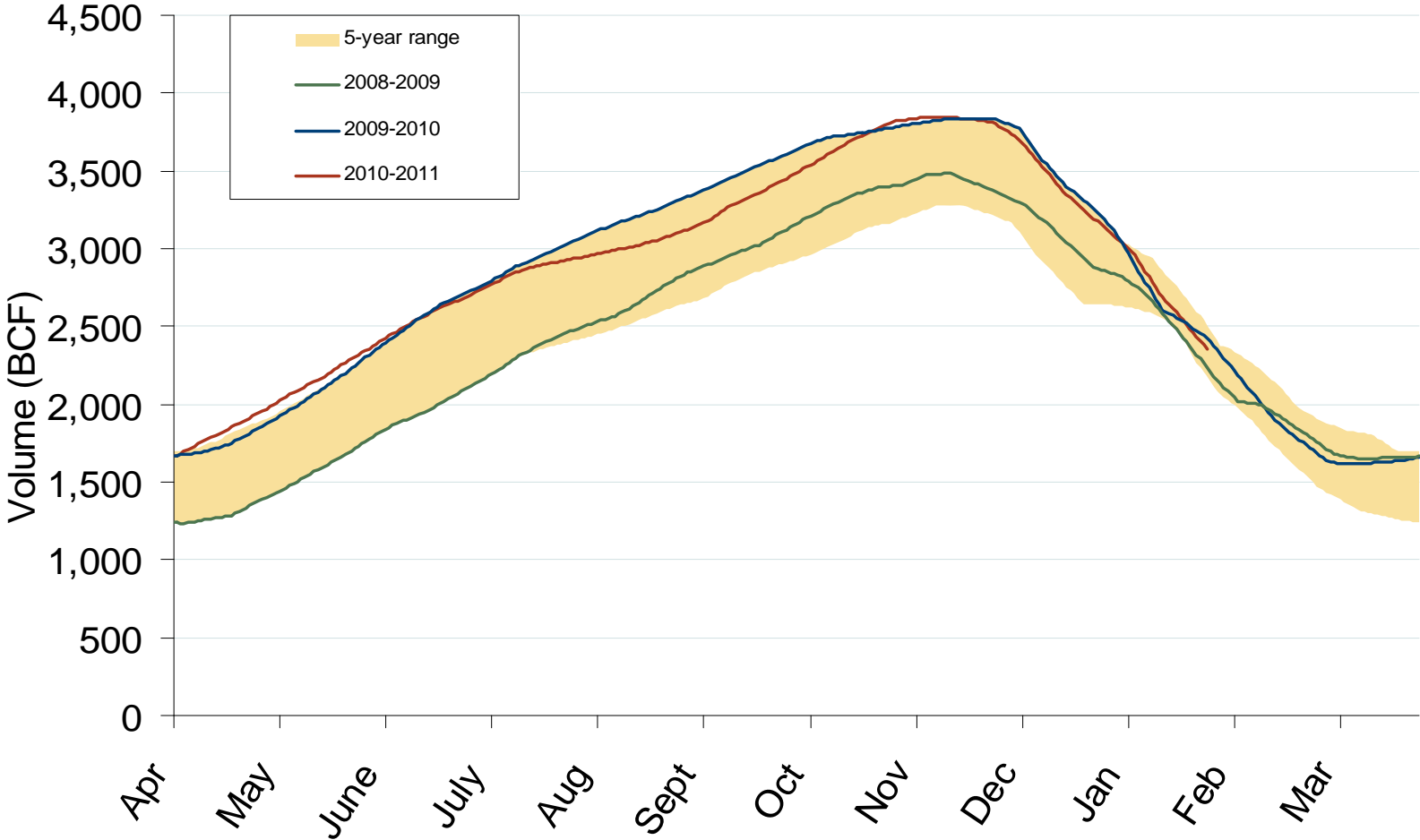
# U.S. Dry Gas Production



Source: Derived from EIA and Bentek data.  
February 2011

Updated February 7, 2011

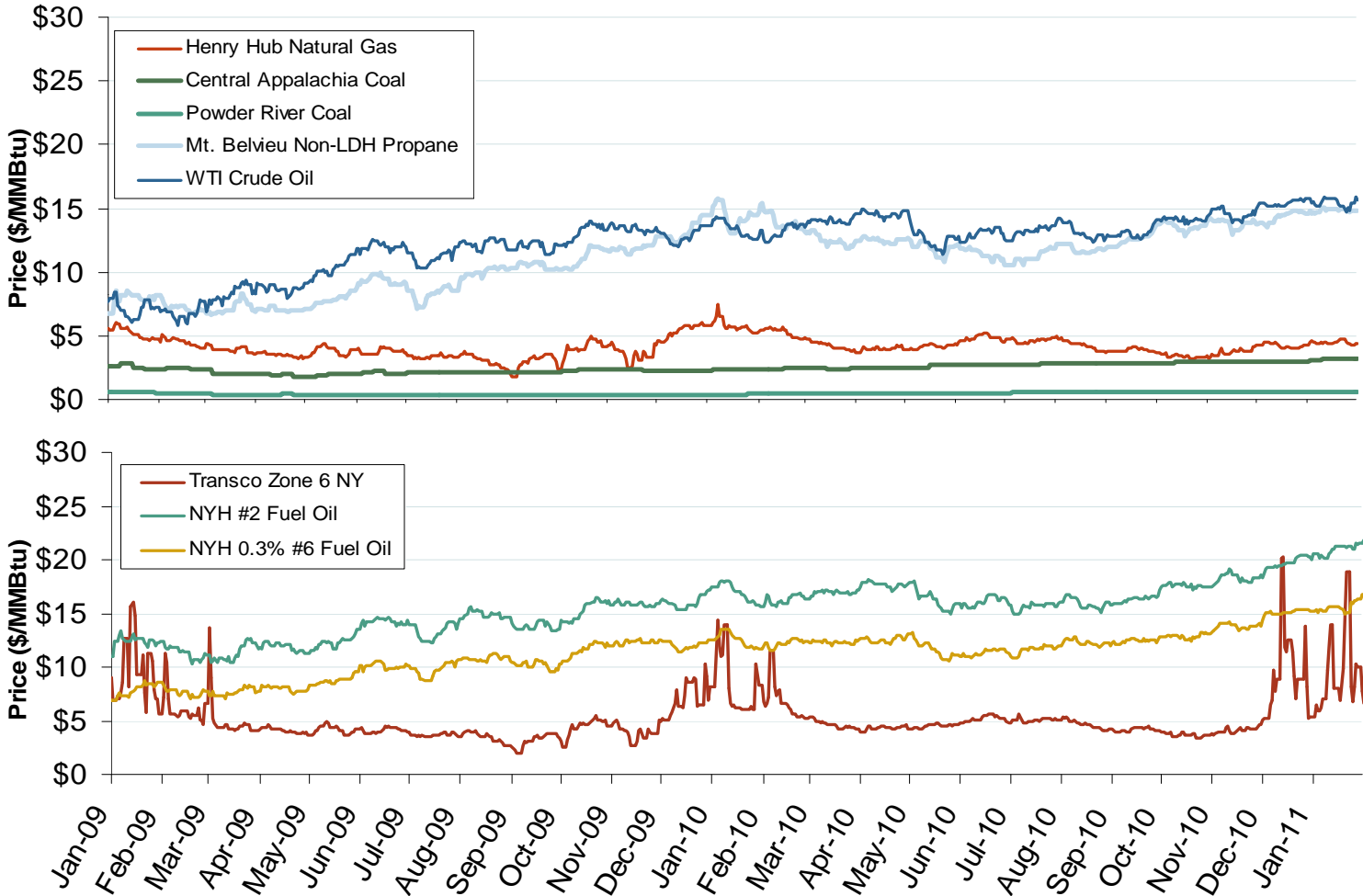
# Total U.S. Working Gas in Storage



Source: Derived from EIA data.  
February 2011

Updated February 7, 2011

# Oil, Coal and Natural Gas Daily Spot Prices

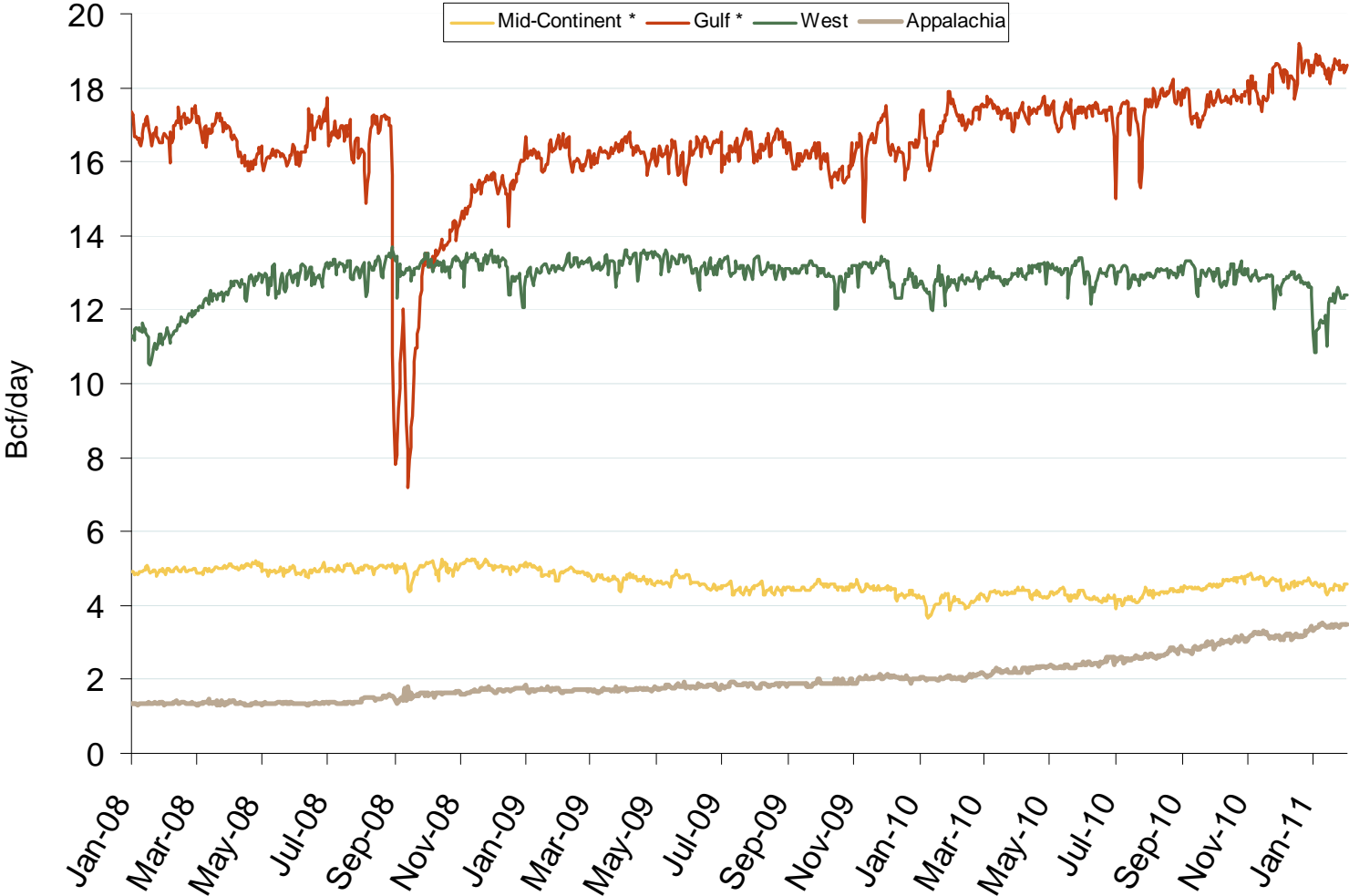


Source: Derived from ICE and Bloomberg data.

Note: Coal prices are quoted in \$/ton. Conversion factors to \$/MMBtu are based on contract specifications of 12,000 btus/pound for Central Appalachian coal and 8800 btus/pound for Powder River Basin coal.

Updated: February 7, 2011

# Regional Natural Gas Production

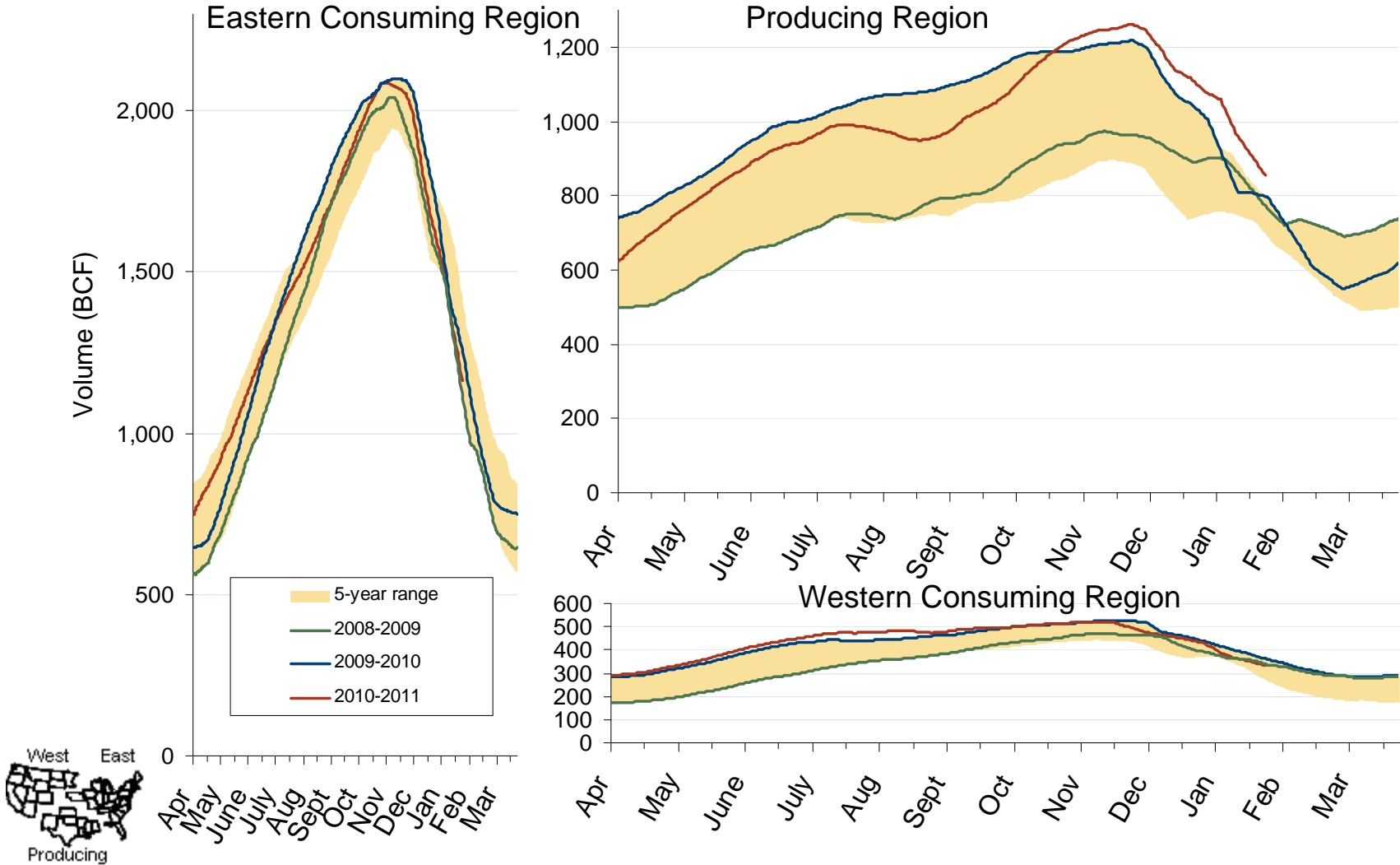


Source: Derived from Bentek data.

\* On July 1, 2009 Bentek redefined its regions, moving some of the southern Midcontinent production to the Southeast, which is included in Gulf series.



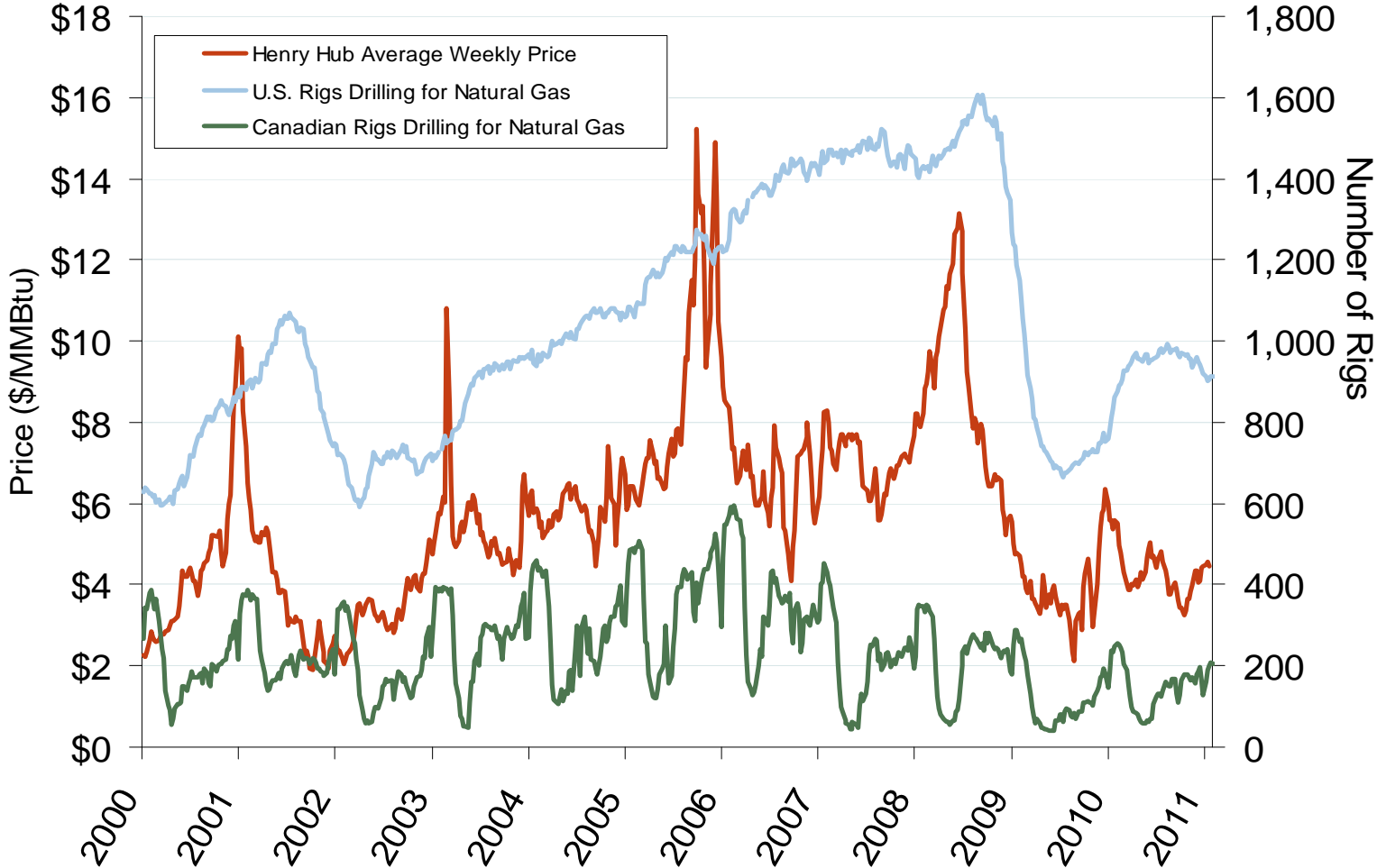
# Regional Totals of Working Gas in Storage



Source: Derived from EIA data. February 2011

Updated February 7, 2011

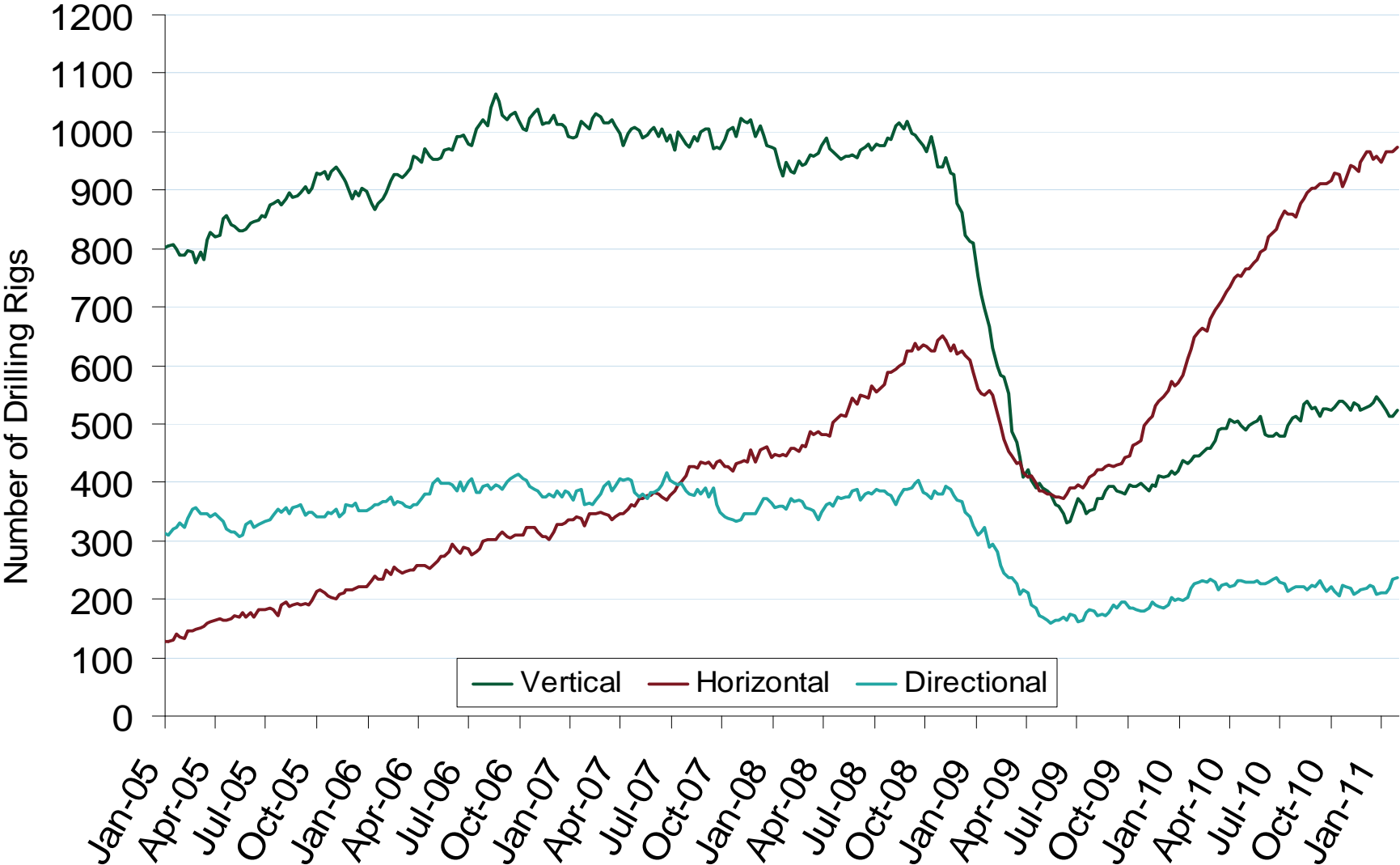
# U.S. and Canadian Natural Gas Drilling Rig Count and Daily Spot Prices



Source: Derived from *Platts* and *Baker Hughes* data.

Updated: February 3, 2011

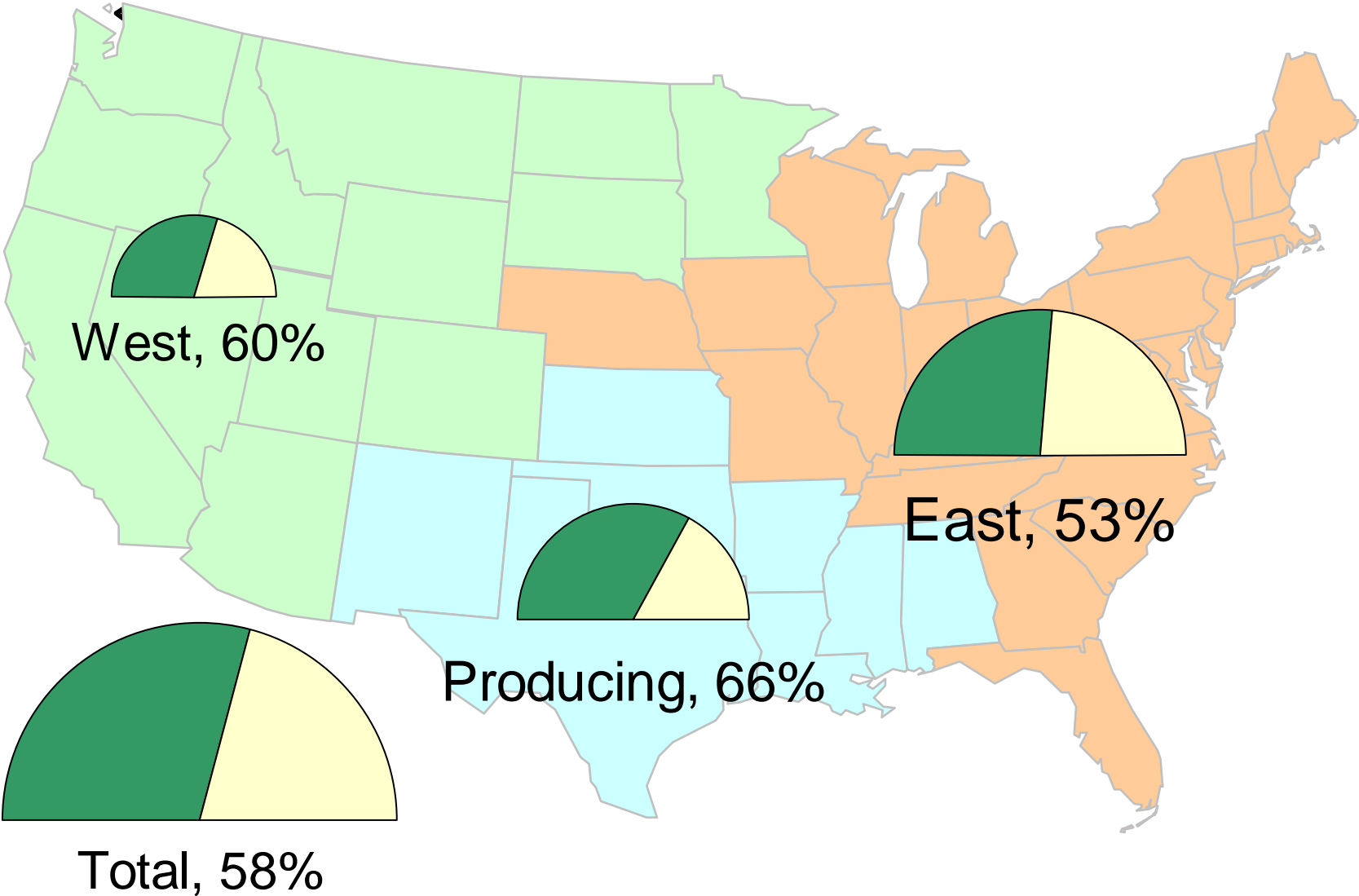
# U.S. Oil and Natural Gas Drilling Rig Count by Type



Source: Derived from *Platts* and *Baker Hughes* data.

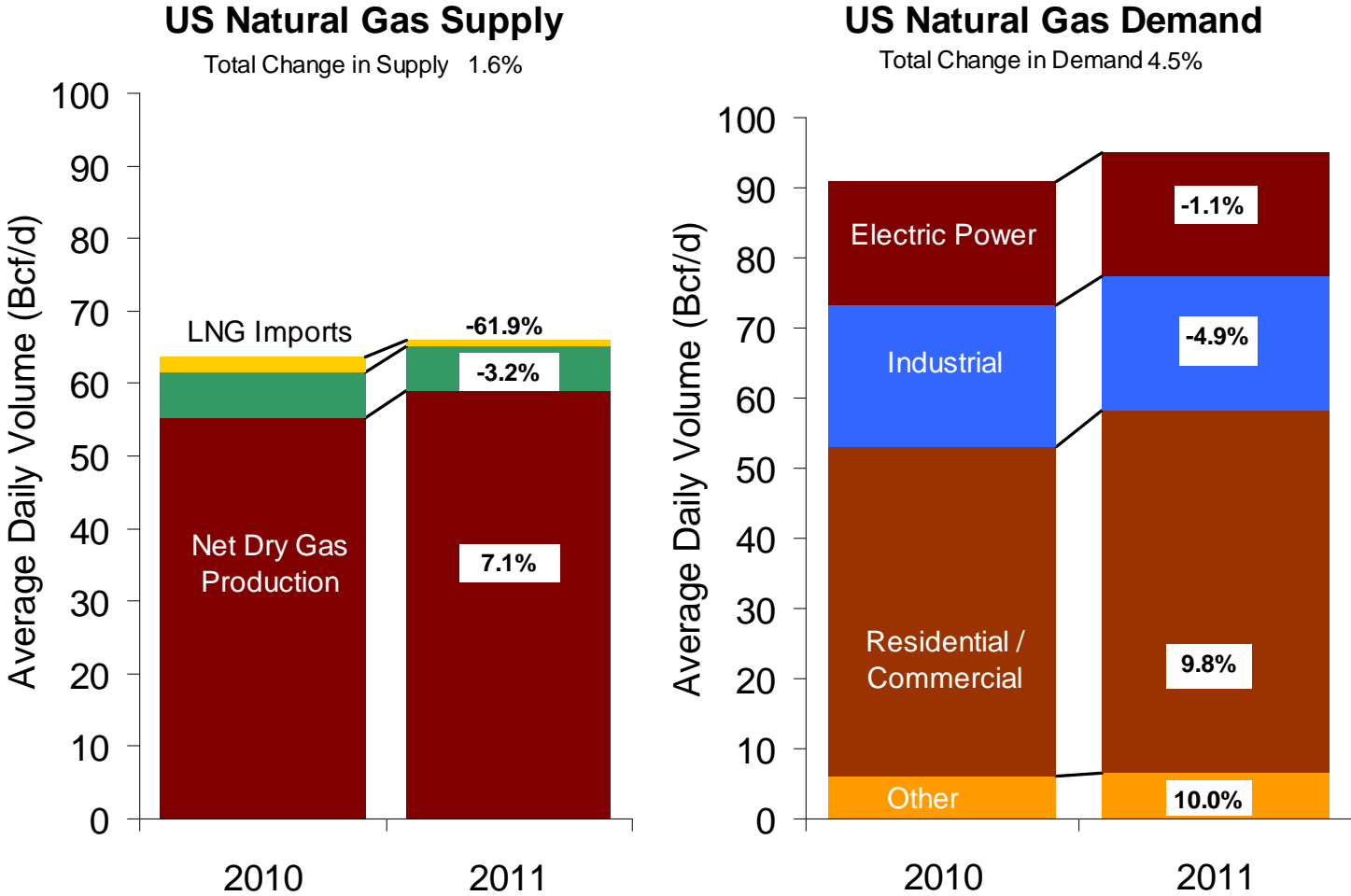
Updated: February 7, 2011

# Natural Gas Storage Inventories – January 28, 2011



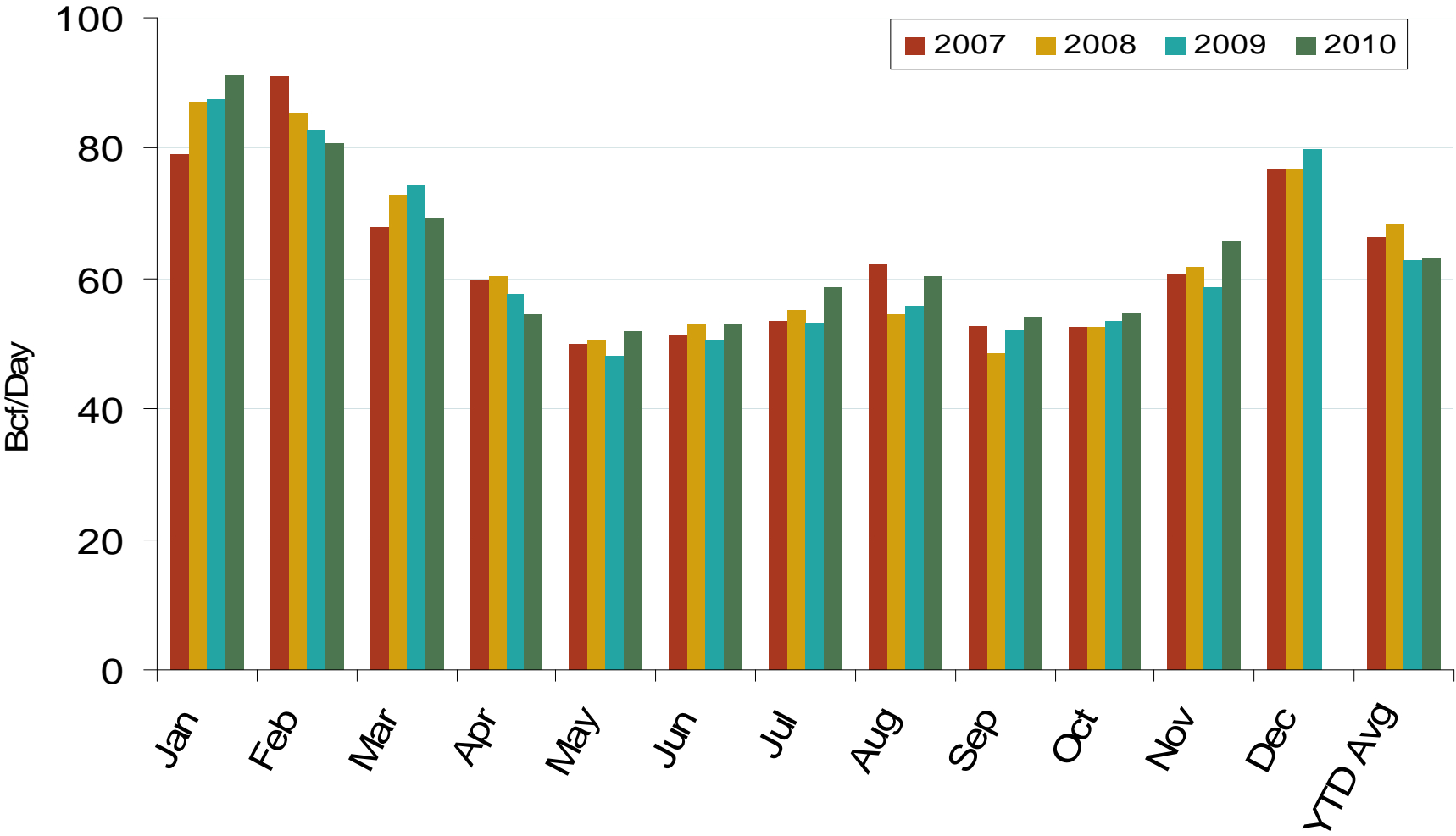
Source: Derived from EIA Storage and Estimated Working Gas Capacity data.  
February 2011

# U.S. Natural Gas Supply and Demand 2010 vs. 2011: January



Source: Derived from *Bentek* data.  
February 2011

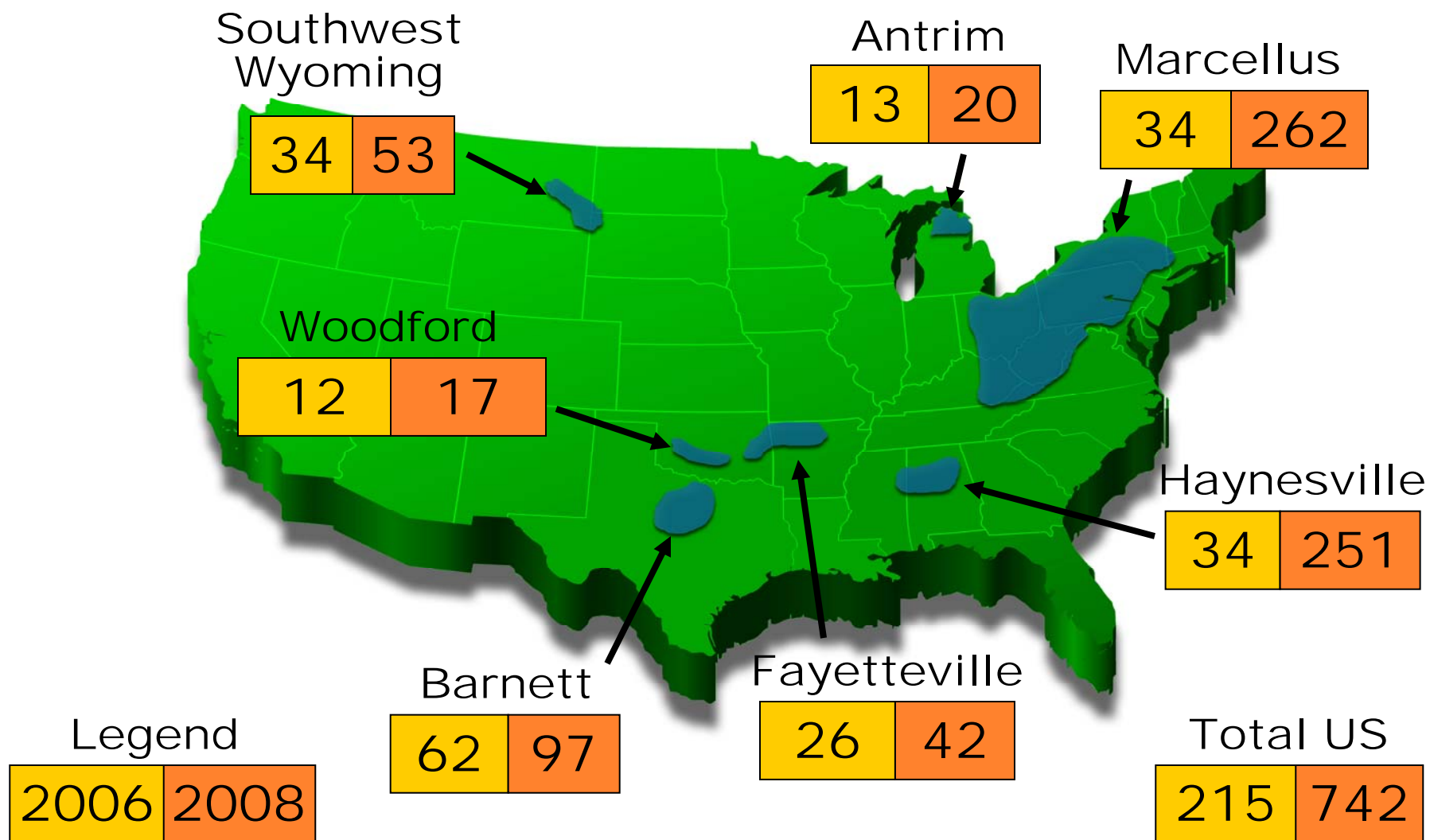
# Year-to-date U.S. Natural Gas Consumption



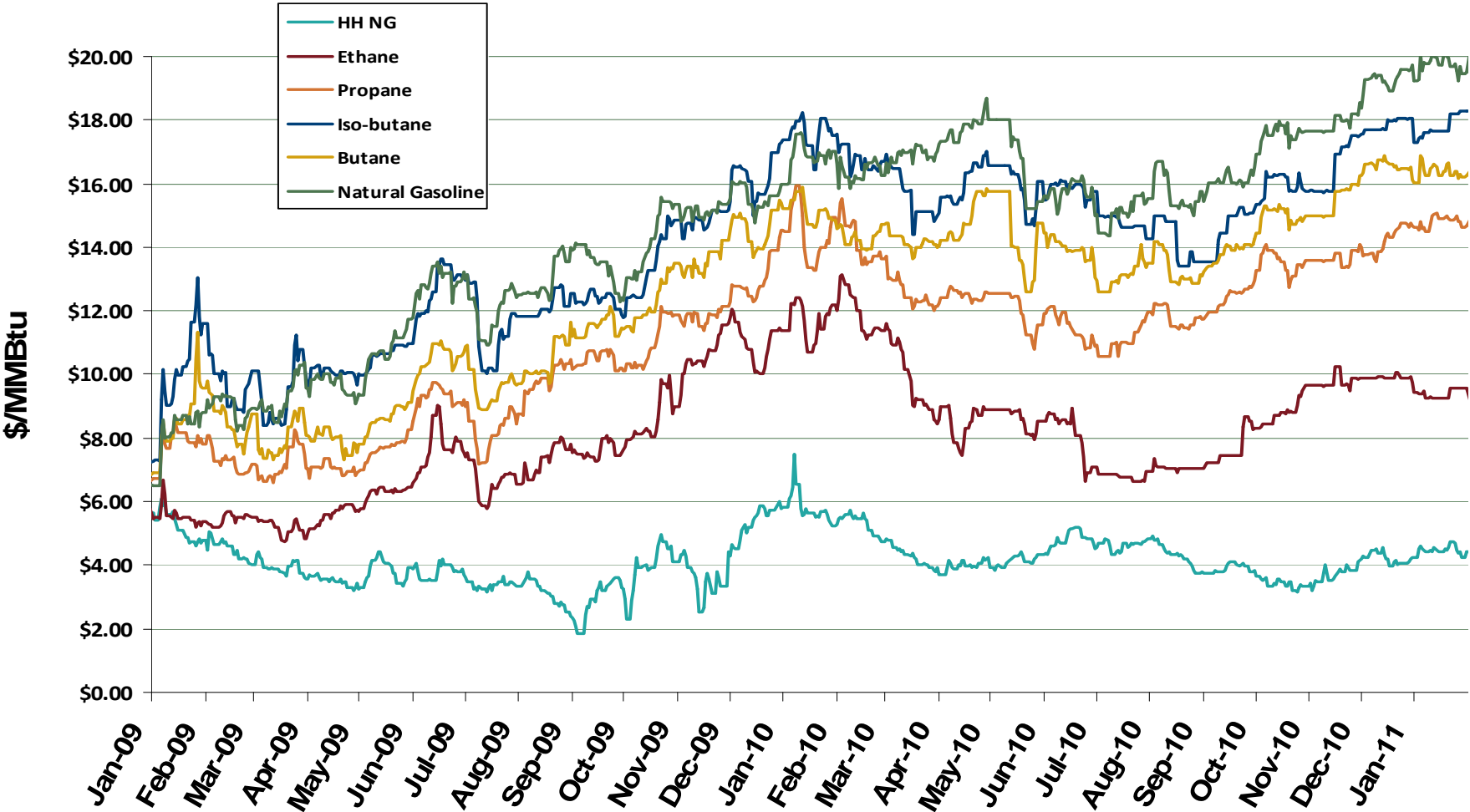
Source: Derived from EIA data.  
February 2011

Updated February 7, 2011

## Estimated Recoverable NG For Select Shale Basins (TCF)



# U.S. Natural Gas vs. Natural Gas Liquids (NGL) Prices

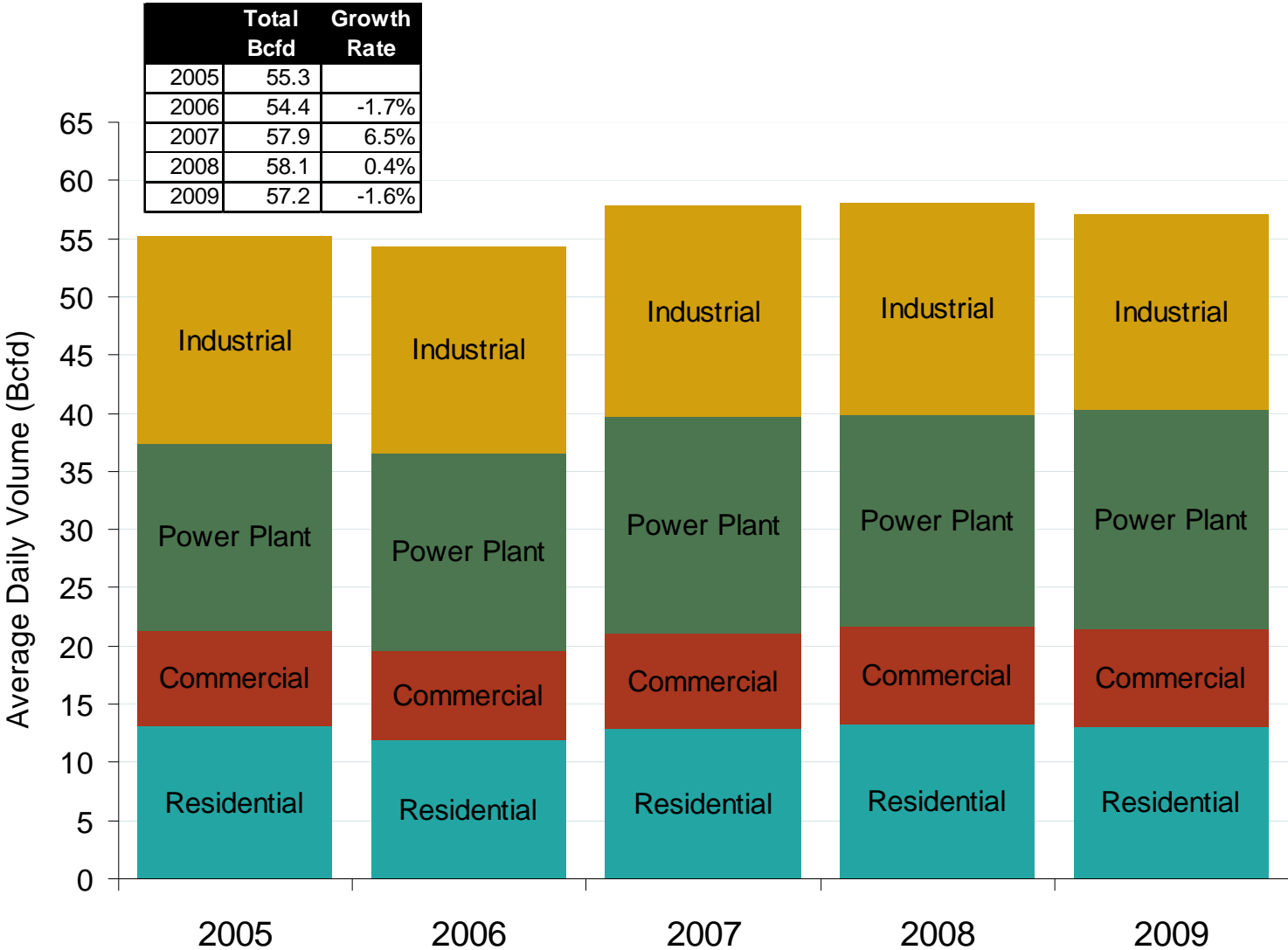


Source: Derived from Bloomberg Data  
February 2011

Updated February 7, 2011

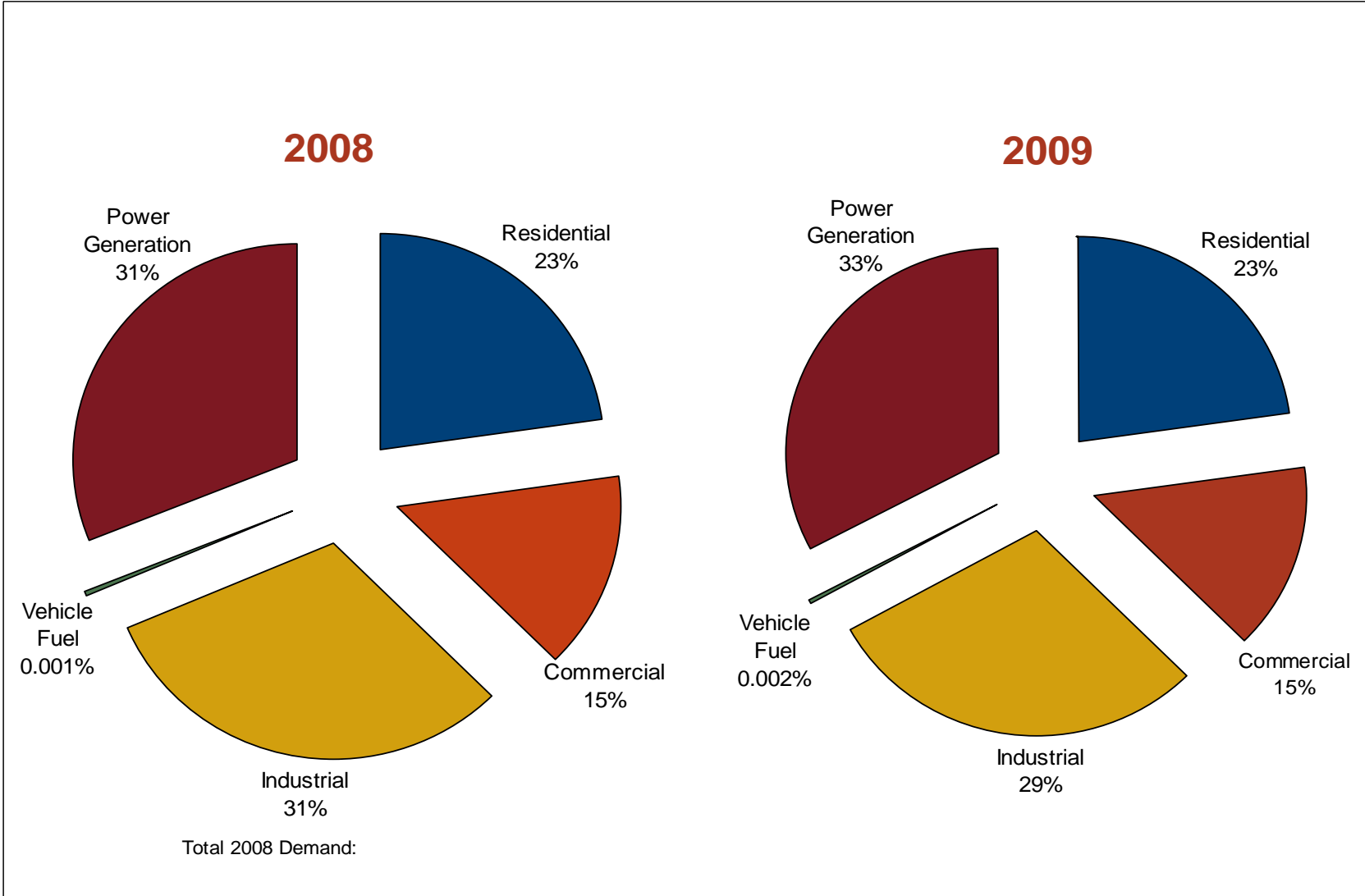


# U.S. Natural Gas Consumption – Lower 48 States



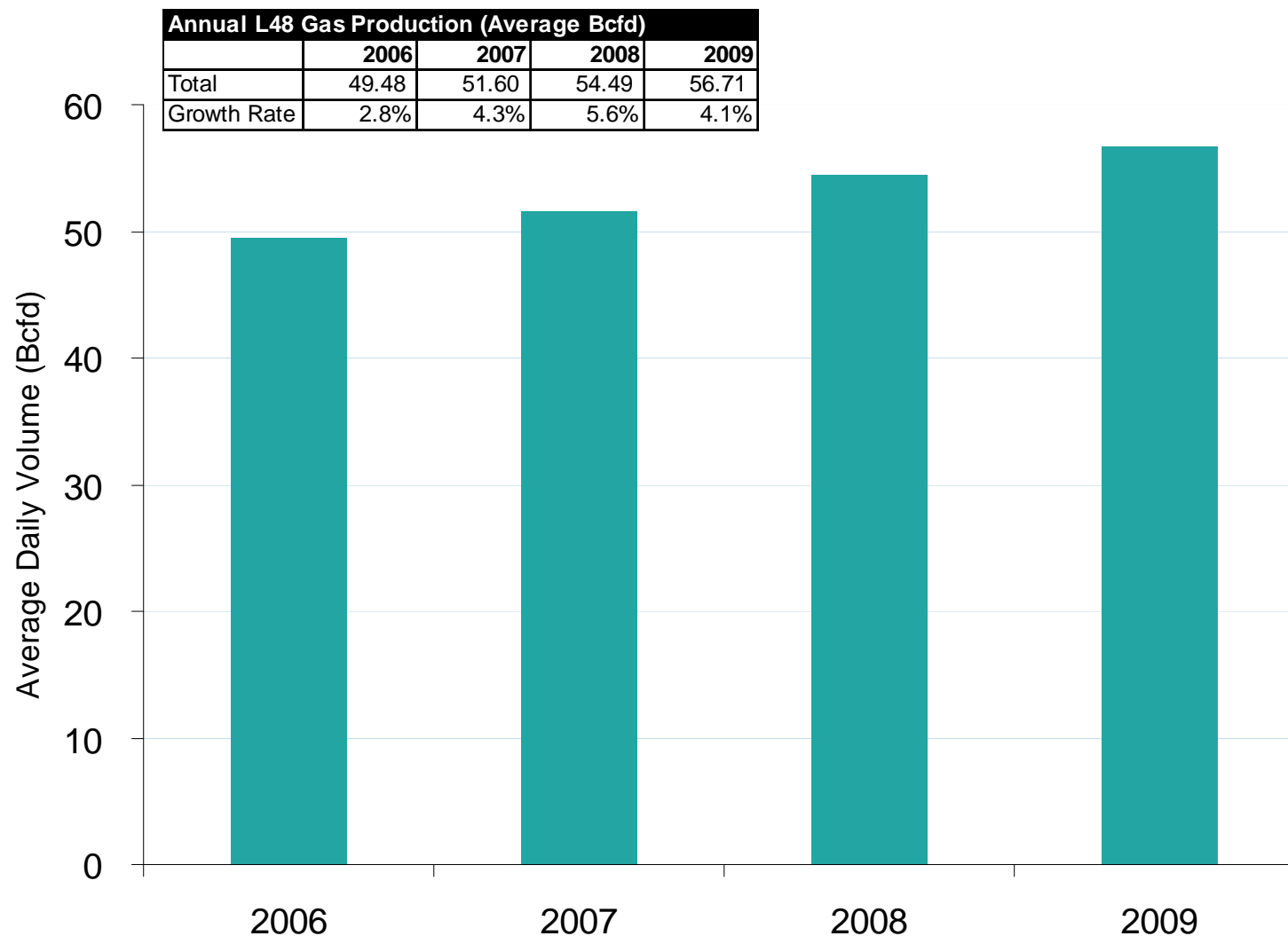
Source: Derived from EIA data  
February 2011

# U.S. Annual Natural Gas Demand by Sector

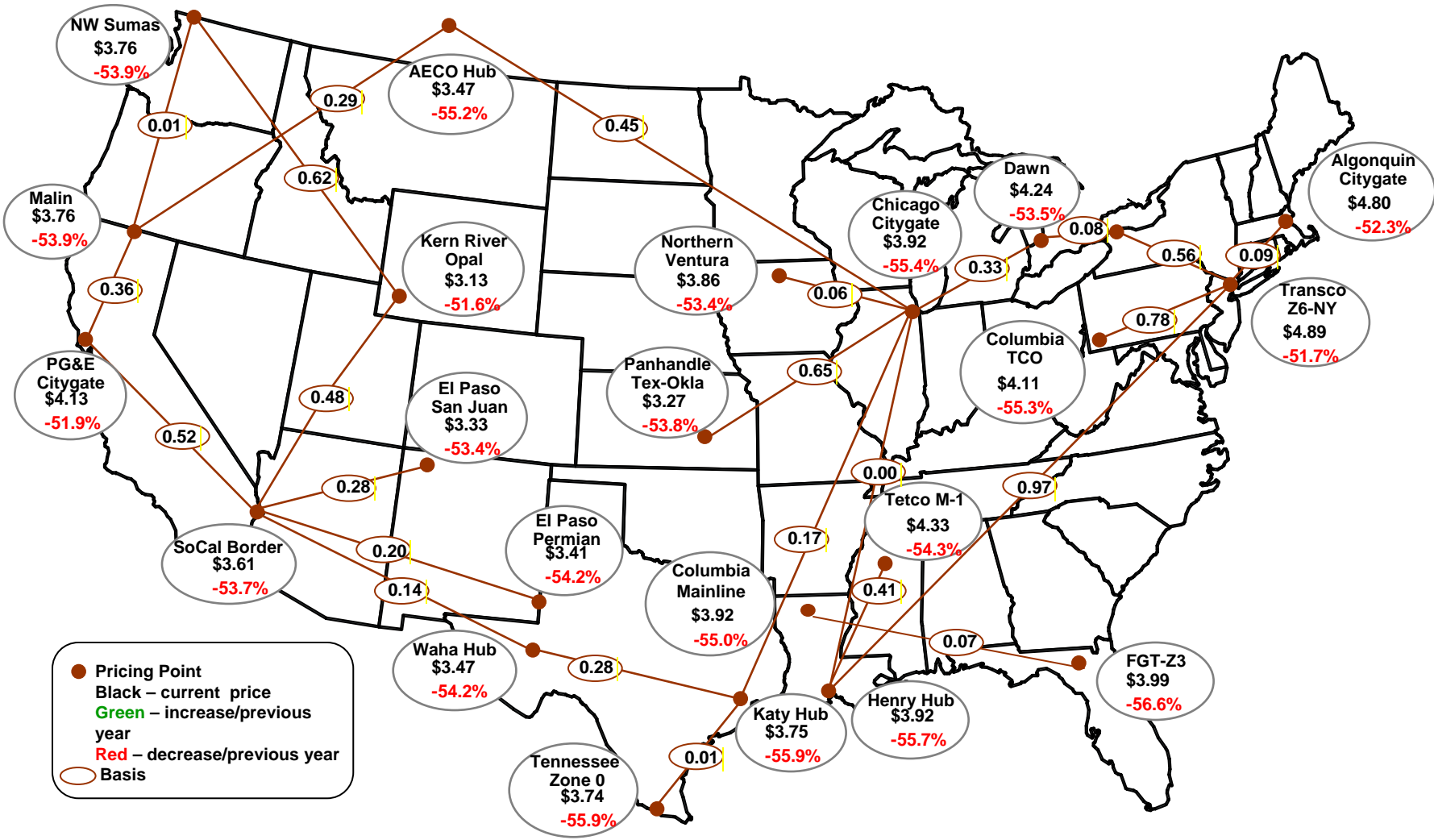


Source: Derived from EIA data.

## U.S. Dry Gas Production – Lower 48 States



# Average Spot Gas Prices, 2009 (\$MMBtu)



Source: Derived from Platts data. February 2011

Updated July 9, 2010