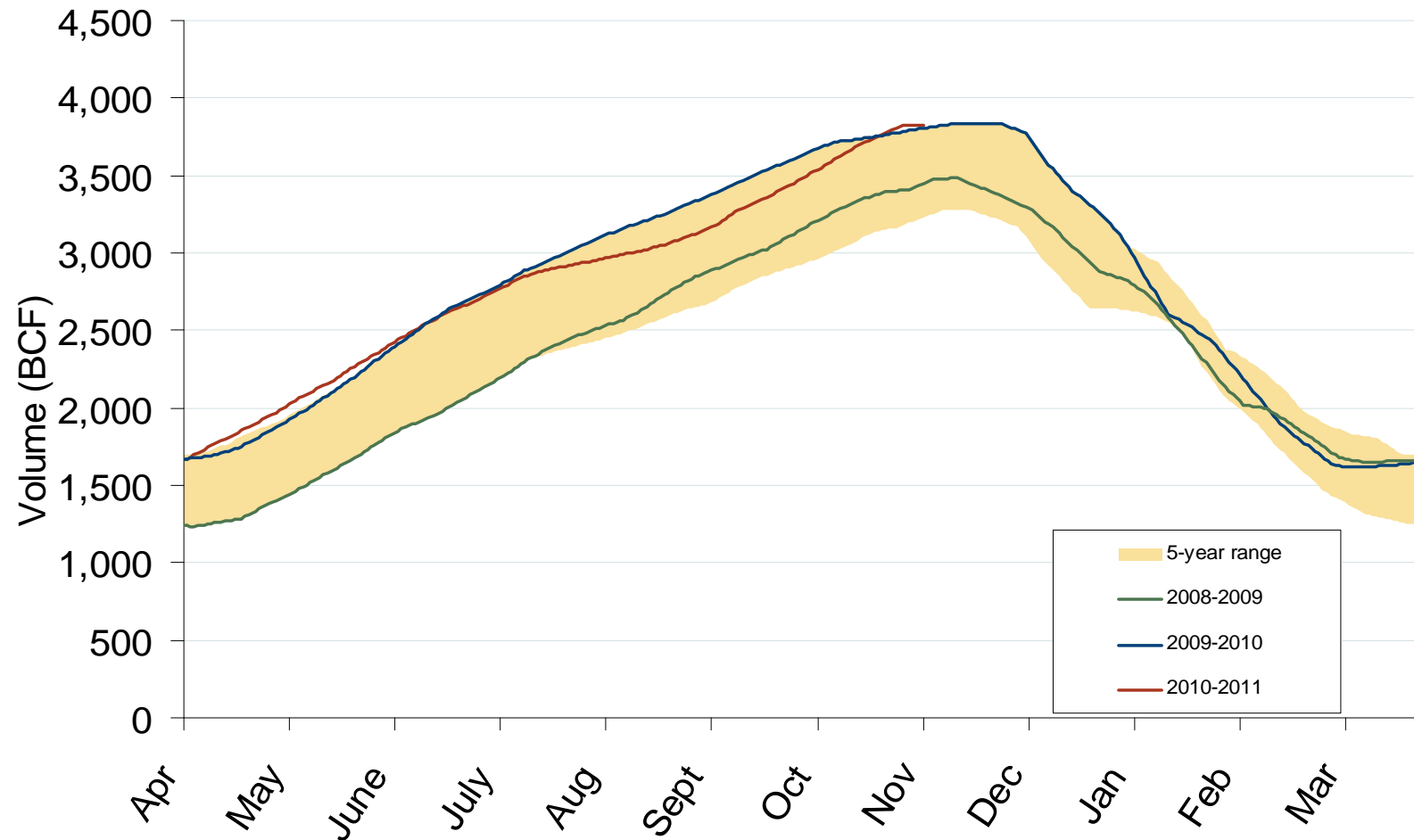


Natural Gas Market National Overview

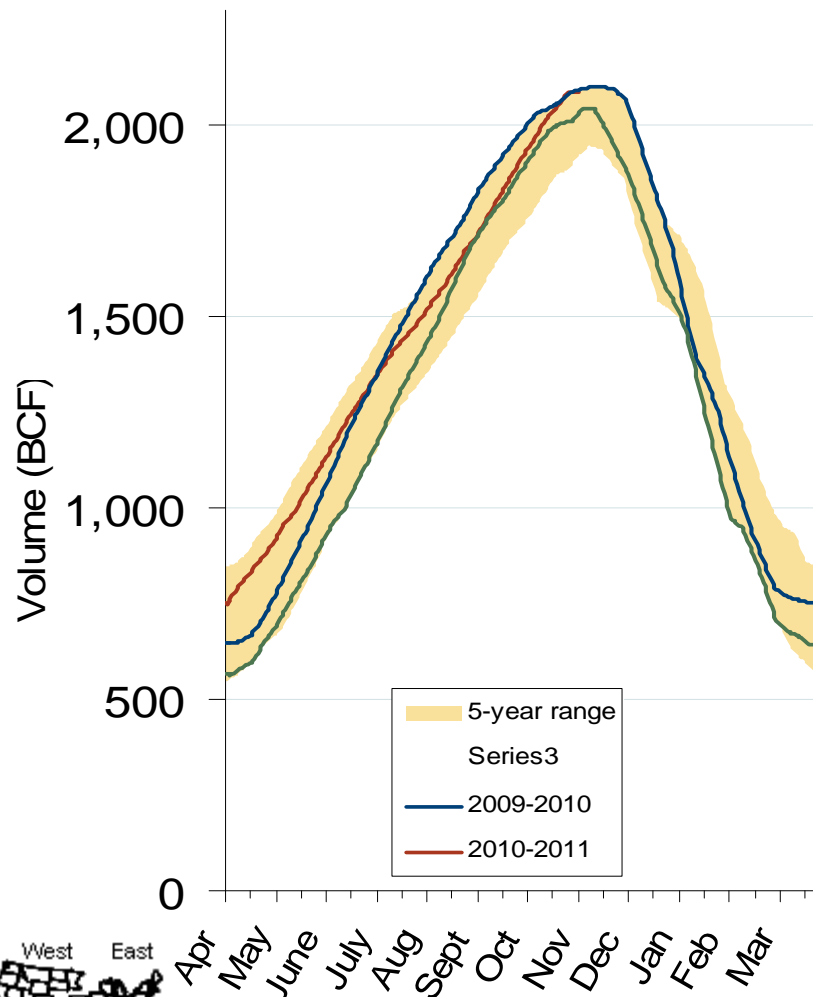


Total U.S. Working Gas in Storage

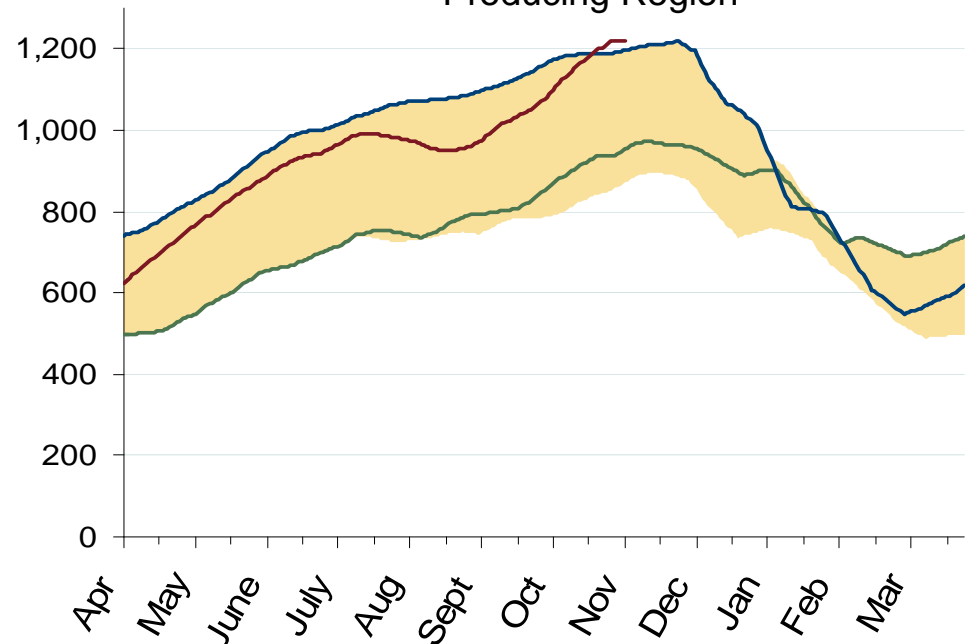


Regional Totals of Working Gas in Storage

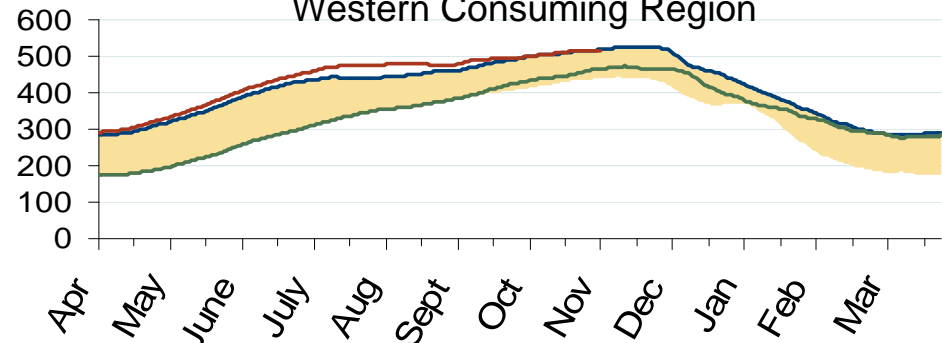
Eastern Consuming Region



Producing Region



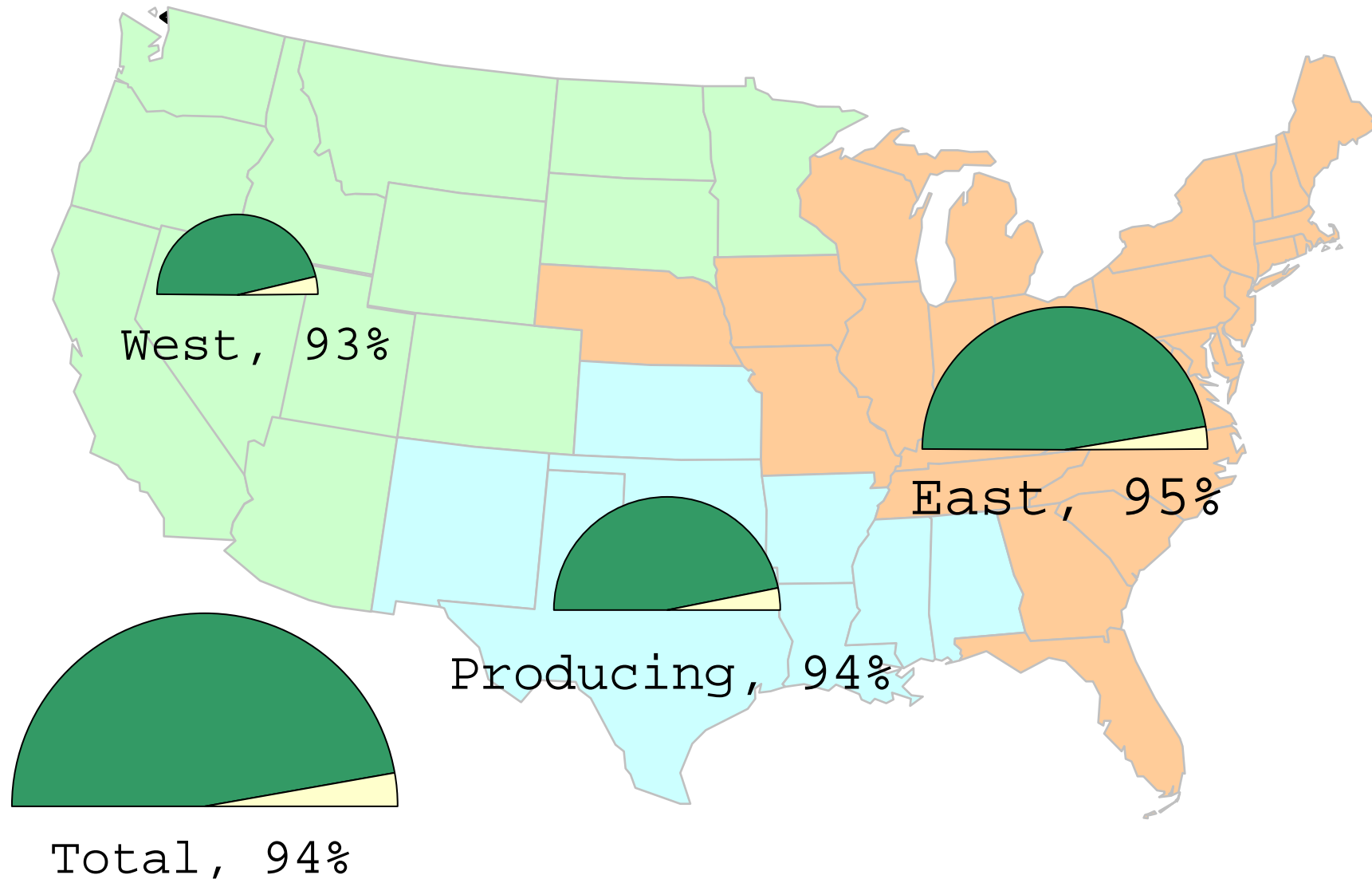
Western Consuming Region



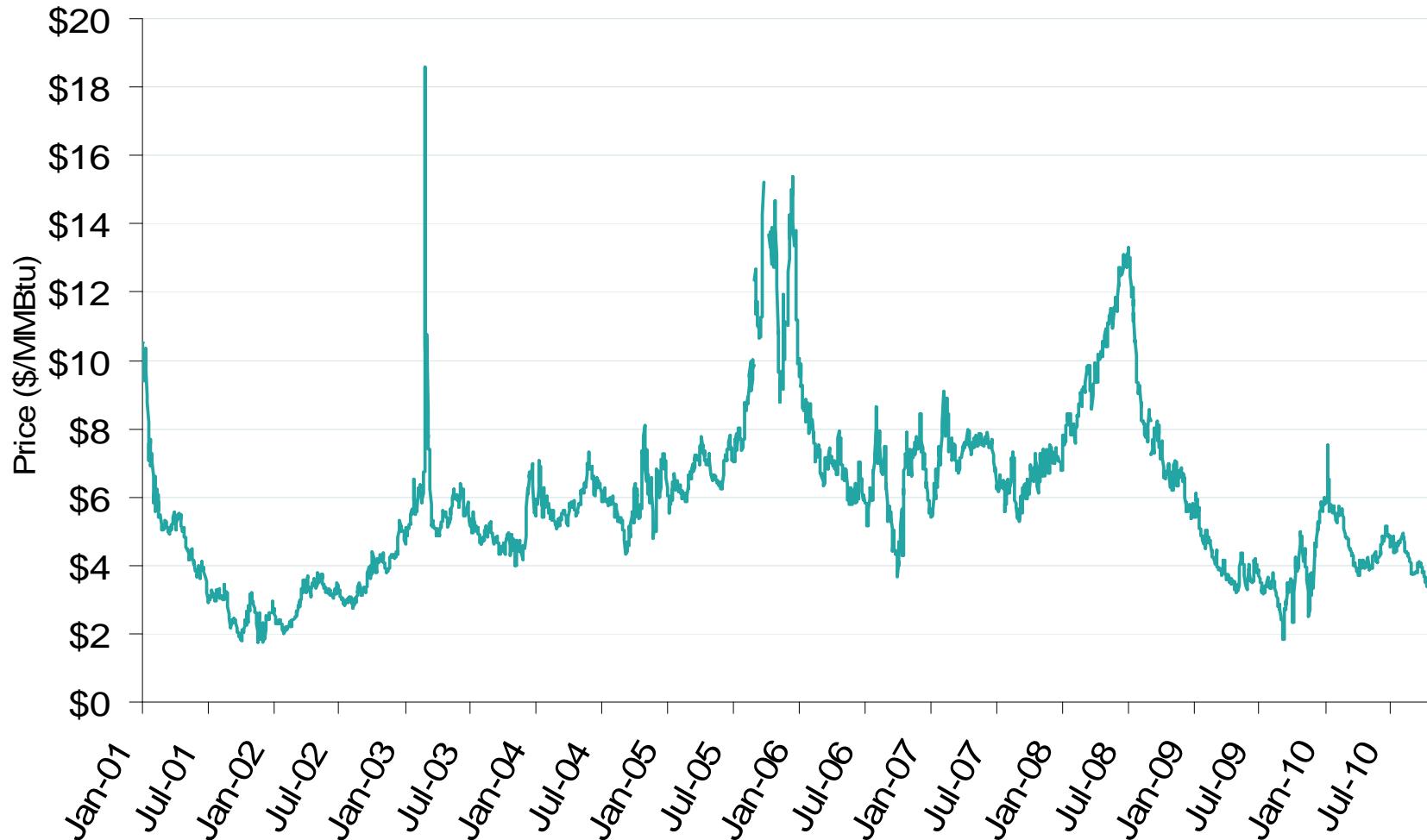
Source: Derived from EIA data.
November 2010

Updated November 5, 2010

Natural Gas Storage Inventories – % full as of October 29, 2010



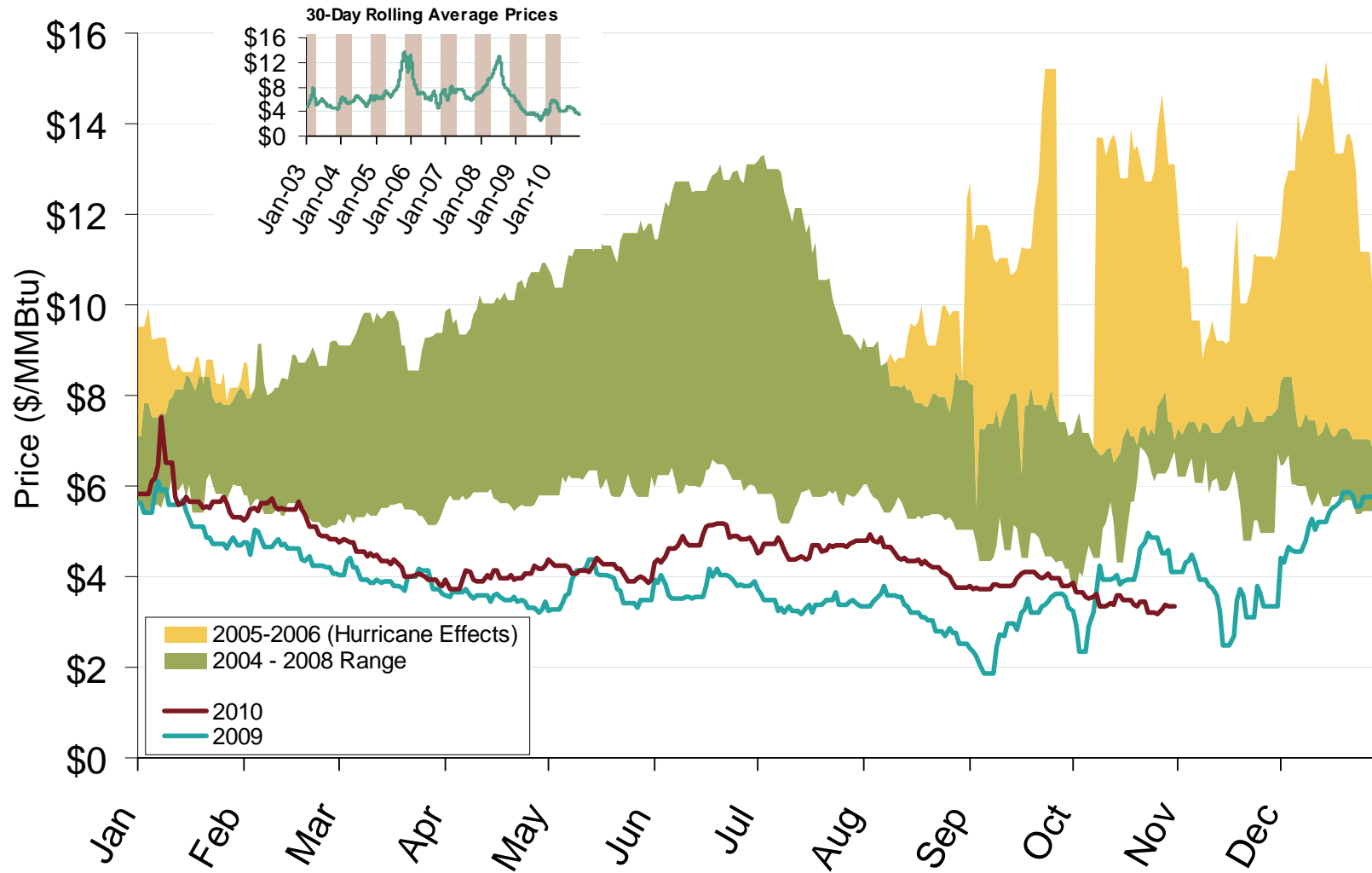
Henry Hub Natural Gas Daily Spot Prices 2001-2010



Natural Gas Market Overview: 5 Year Range of Henry Hub Spot Prices

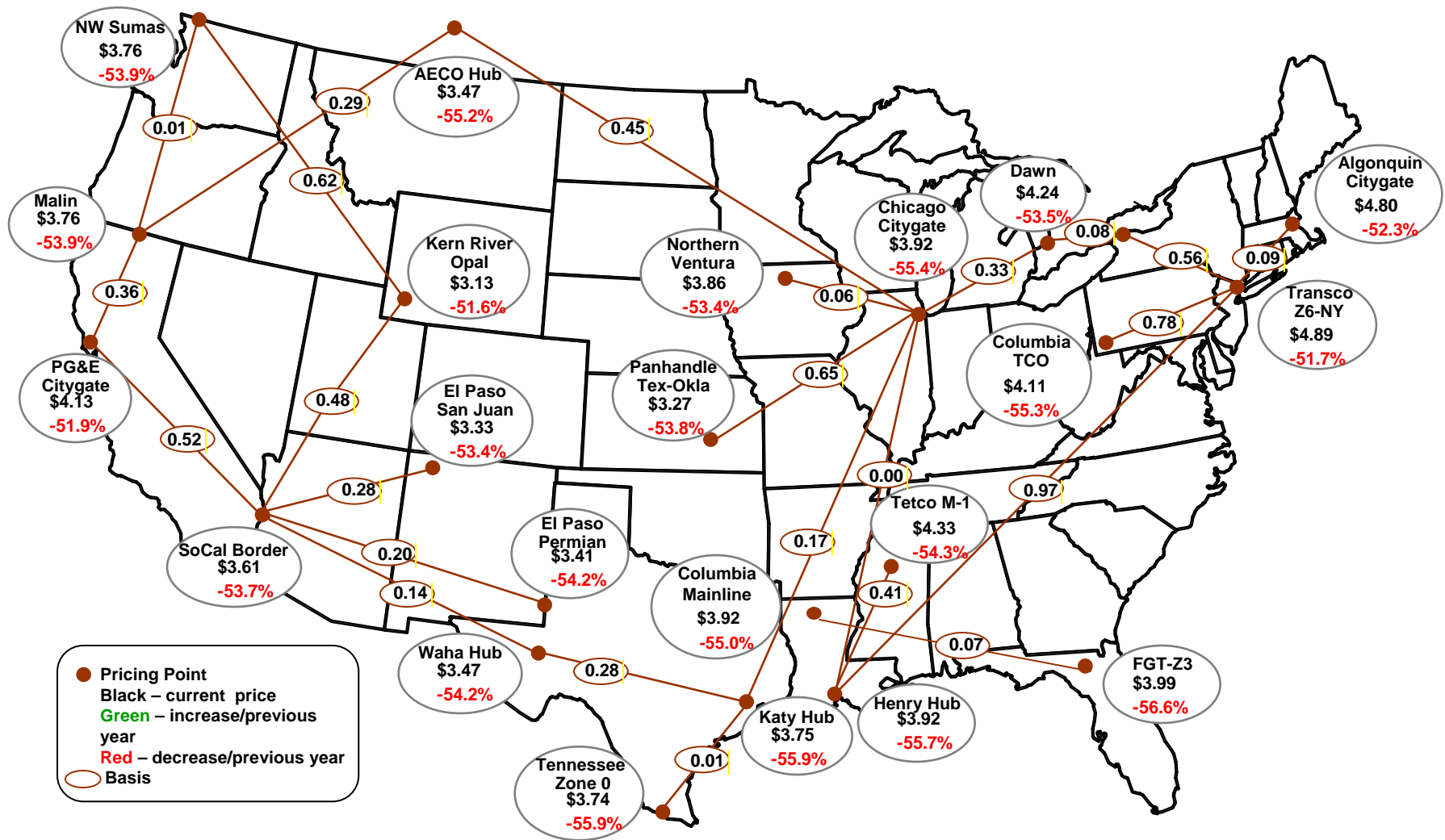
Federal Energy Regulatory Commission • Market Oversight • www.ferc.gov/oversight

Henry Hub Natural Gas Daily Spot Prices



Source: Derived from *Platts* data.
November 2010

Average Spot Gas Prices, 2009 (\$MMBtu)



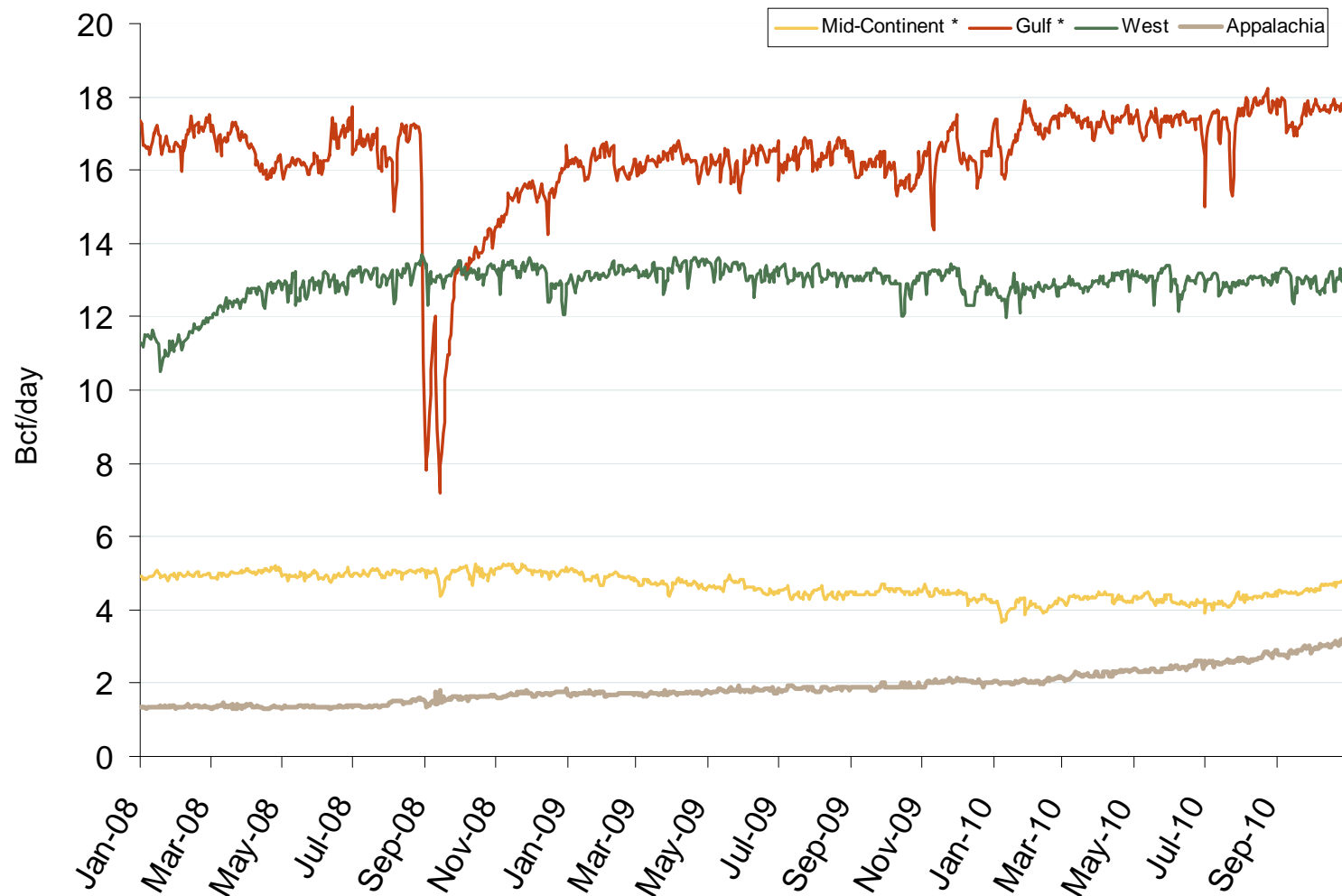
Source: Derived from *Platts* data.
November 2010

Updated July 9, 2010

Natural Gas Market Overview: Production By Region

Federal Energy Regulatory Commission • Market Oversight • www.ferc.gov/oversight

Regional Natural Gas Production

Source: Derived from *Bentek* data.

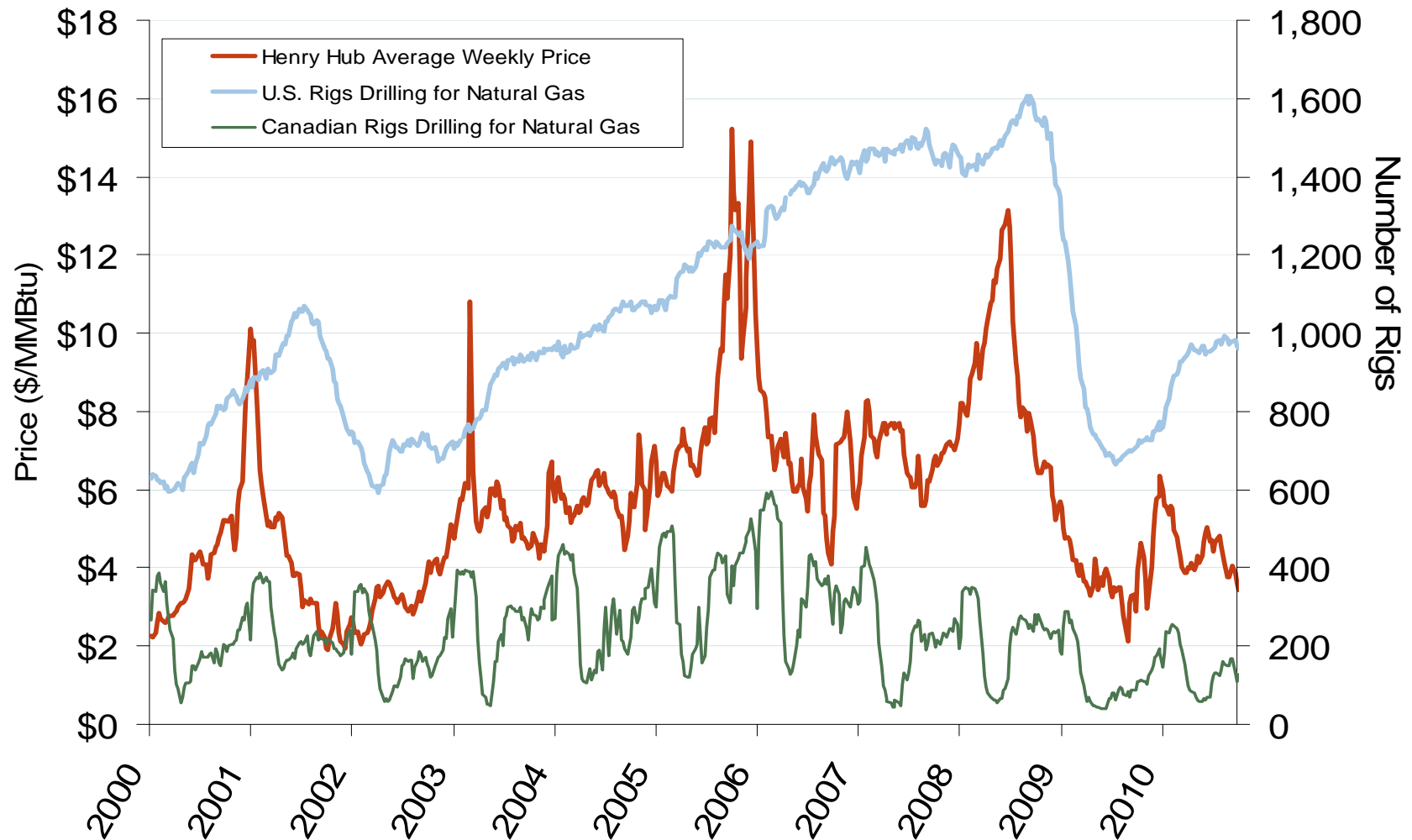
* On July 1, 2009 Bentek redefined its regions, moving some of the southern Midcontinent production to the Southeast, which is included in Gulf series.

November 2010

Updated November 5, 2010

2182

U.S. and Canadian Natural Gas Drilling Rig Count and Daily Spot Prices



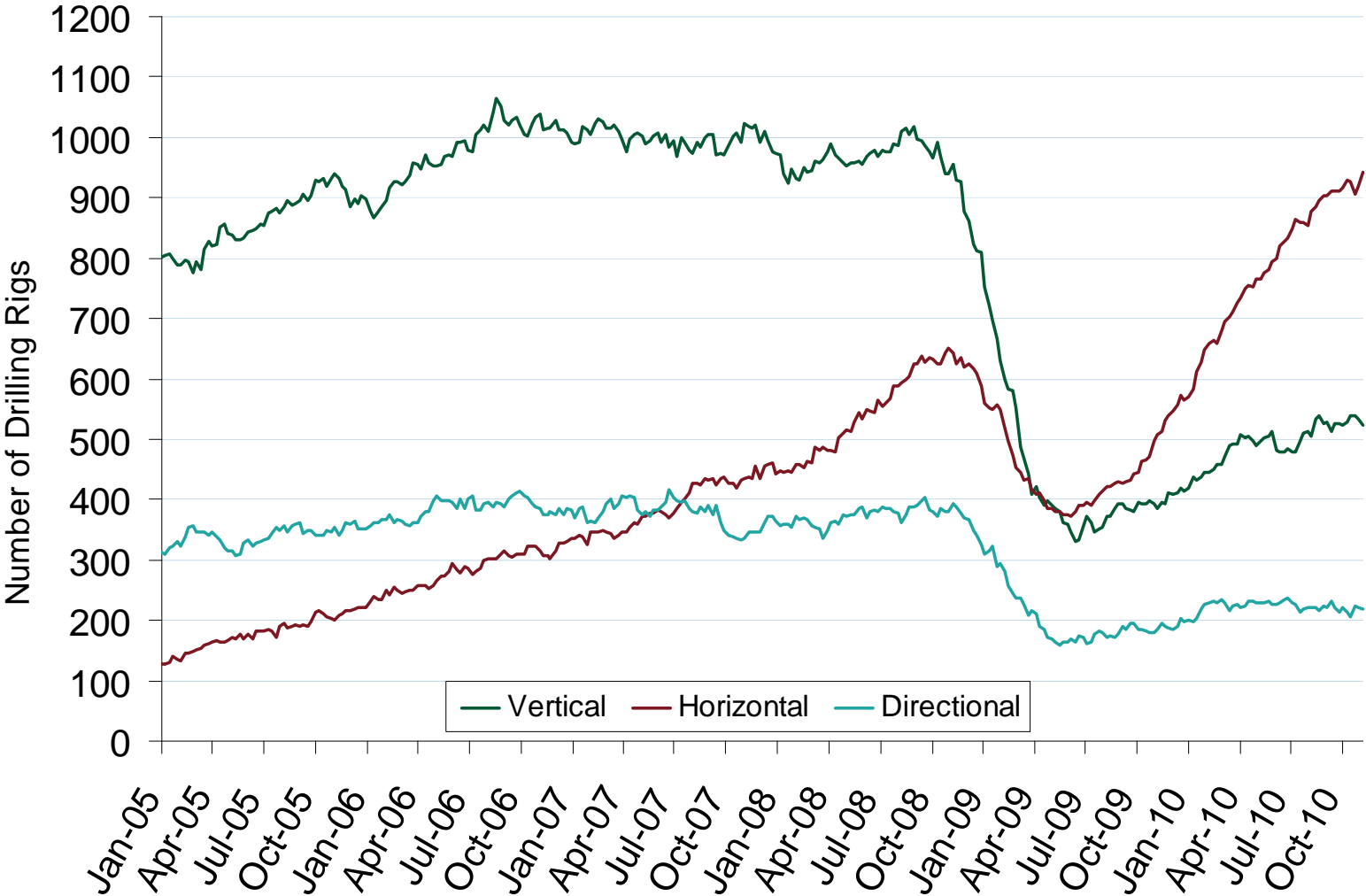
Source: Derived from *Platts* and *Baker Hughes* data.

November 2010

Updated November 5, 2010

2007

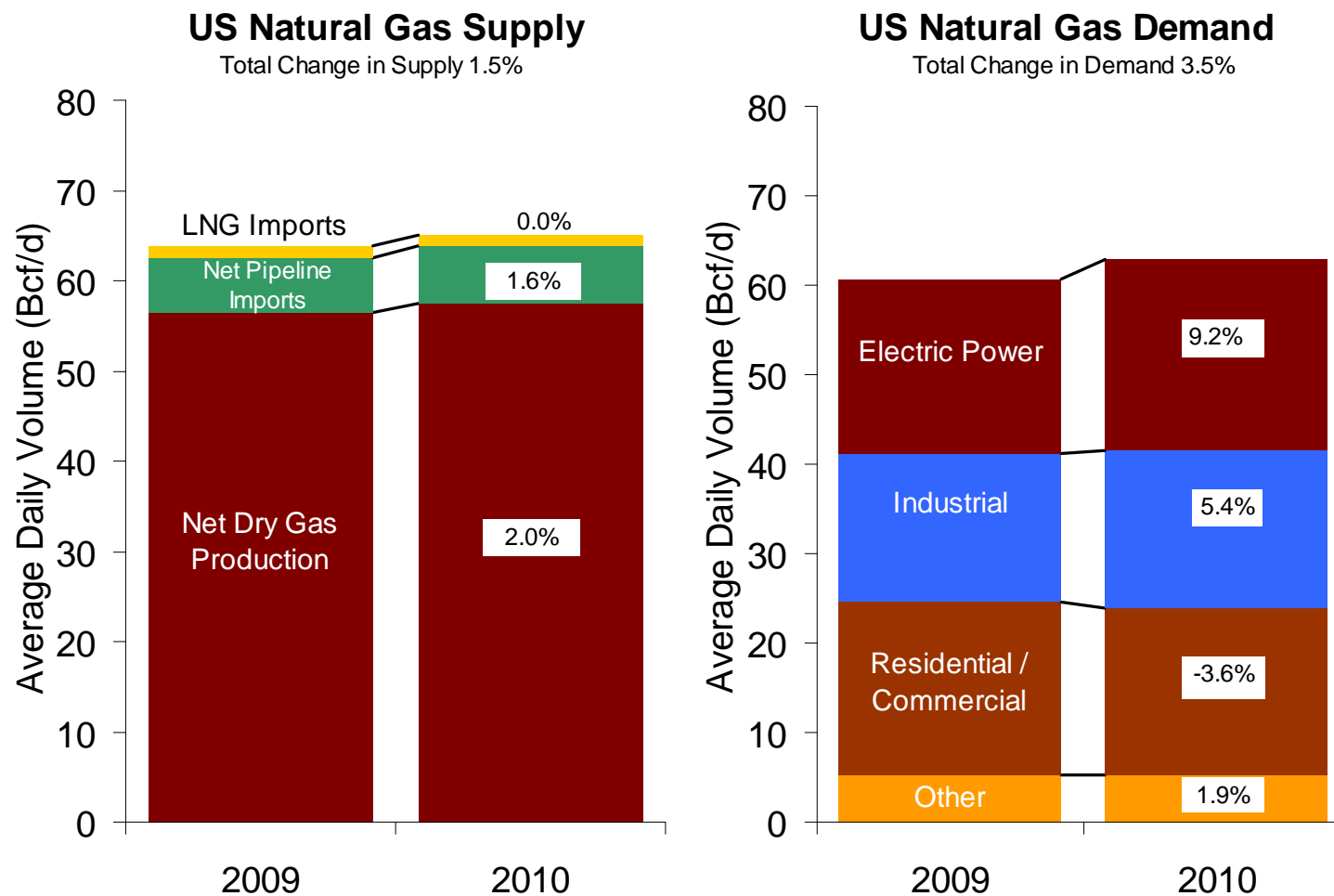
U.S. Oil and Natural Gas Drilling Rig Count by Type



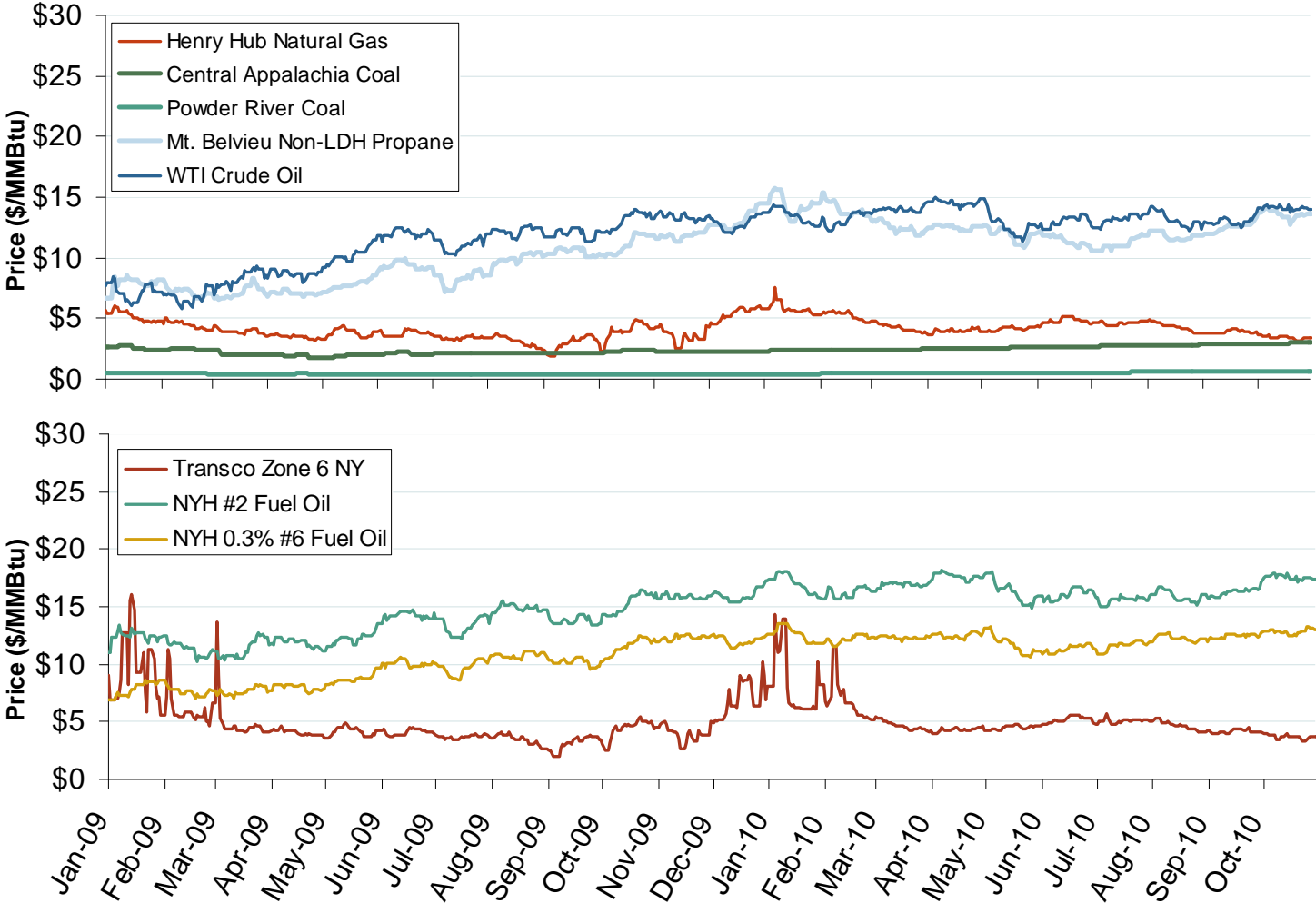
Source: Derived from *Platts* and *Baker Hughes* data.
November 2010

Updated November 5, 2010

U.S. Natural Gas Supply and Demand 2009 vs. 2010: January - October



Oil, Coal and Natural Gas Daily Spot Prices

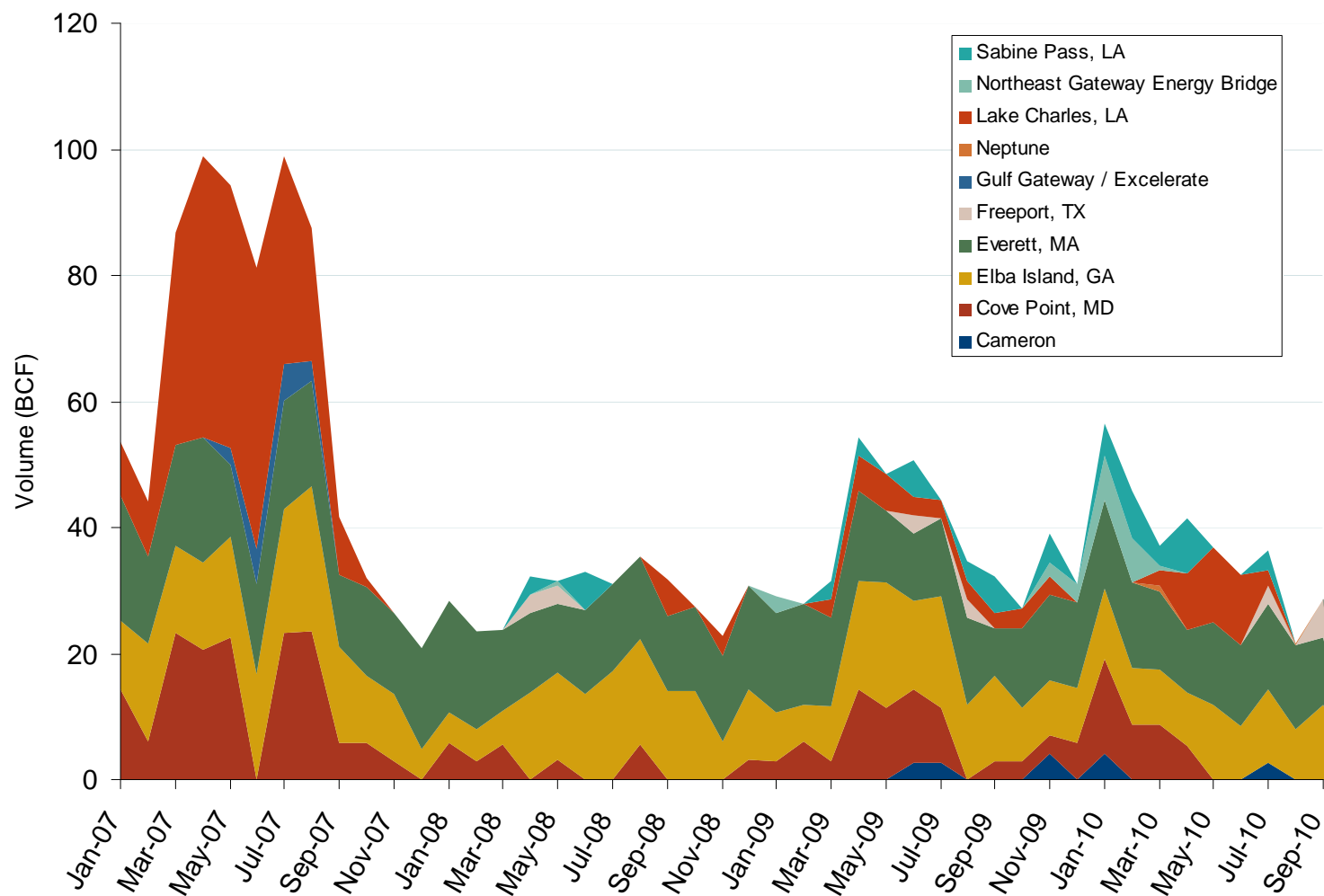


Source: Derived from ICE and Bloomberg data.

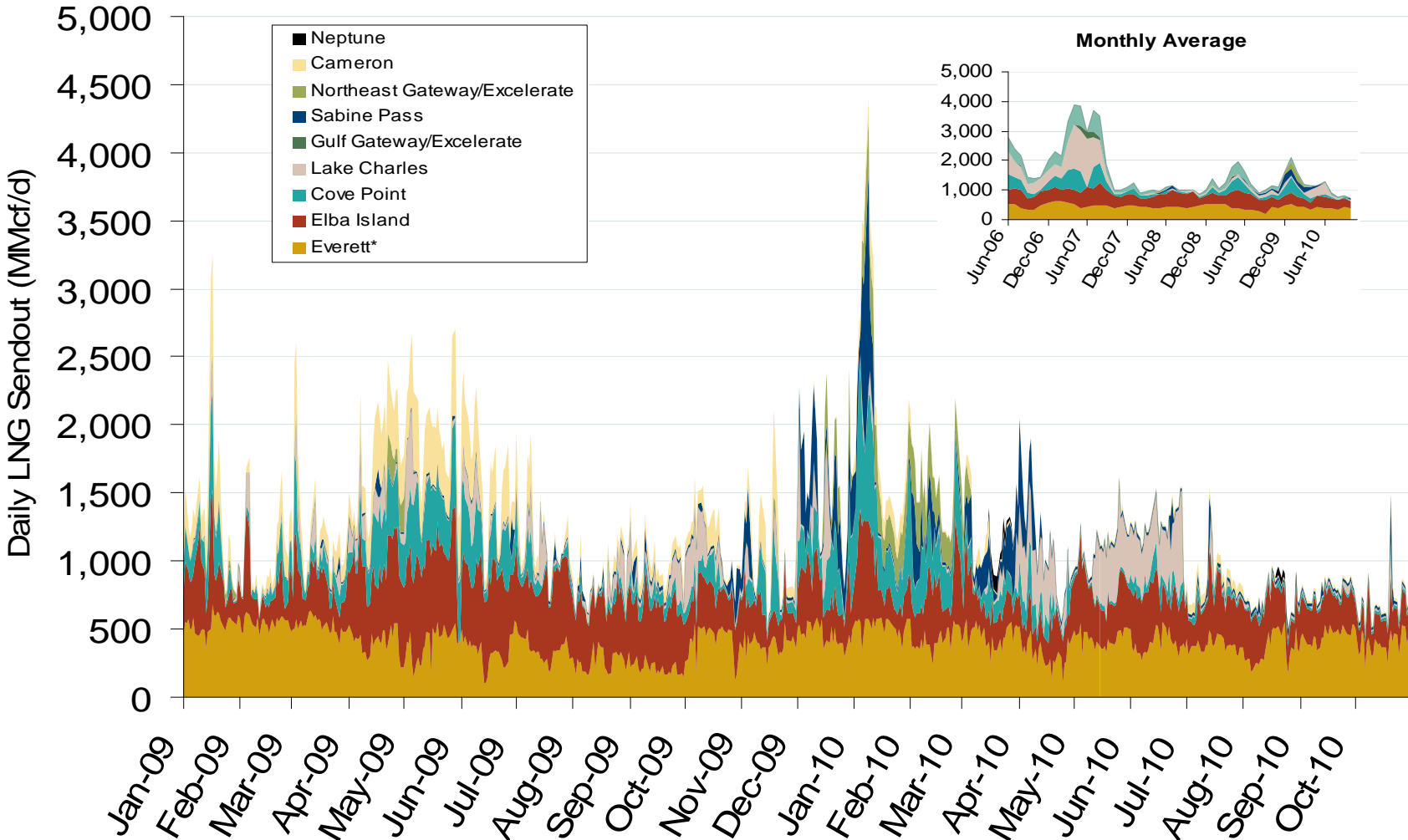
Note: Coal prices are quoted in \$/ton. Conversion factors to \$/MMBtu are based on contract specifications of 12,000 btus/pound for Central Appalachian coal and 8800 btus/pound for Powder River Basin coal.

Updated November 5, 2010

Monthly Gas Imports at Existing U.S. LNG Facilities



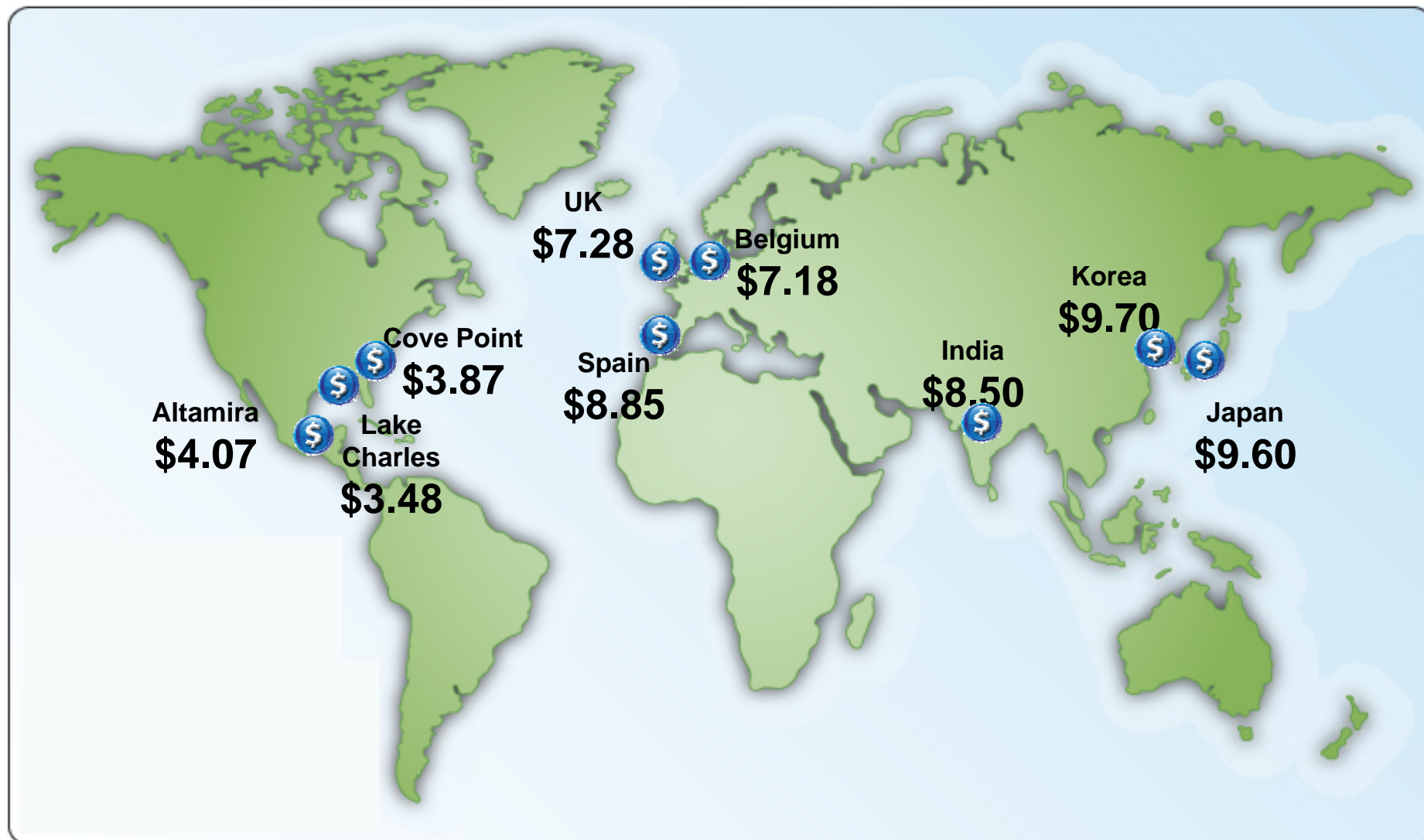
Daily Gas Sendout from Existing LNG Facilities



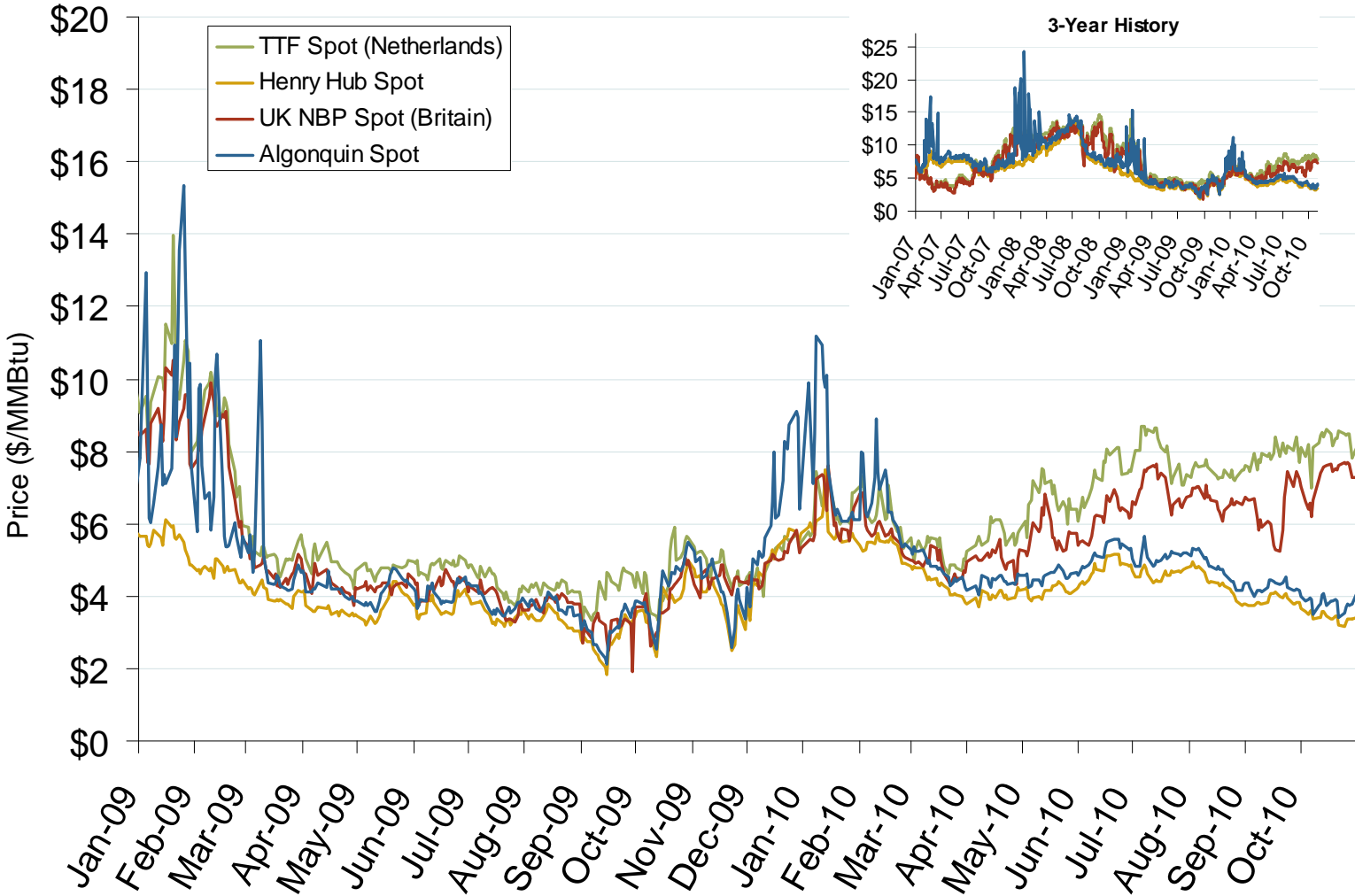
Source: Derived from Bentek data.

* Everett data includes flows onto the AGT and TGP interstate lines, plus estimates of flows to the Mystic 7 power plant, Keyspan Boston Gas, and LNG trucked out of the terminal. Excludes Freeport LNG which flows via intrastate pipelines.
November 2010

World LNG Estimated November 2010 Landed Prices

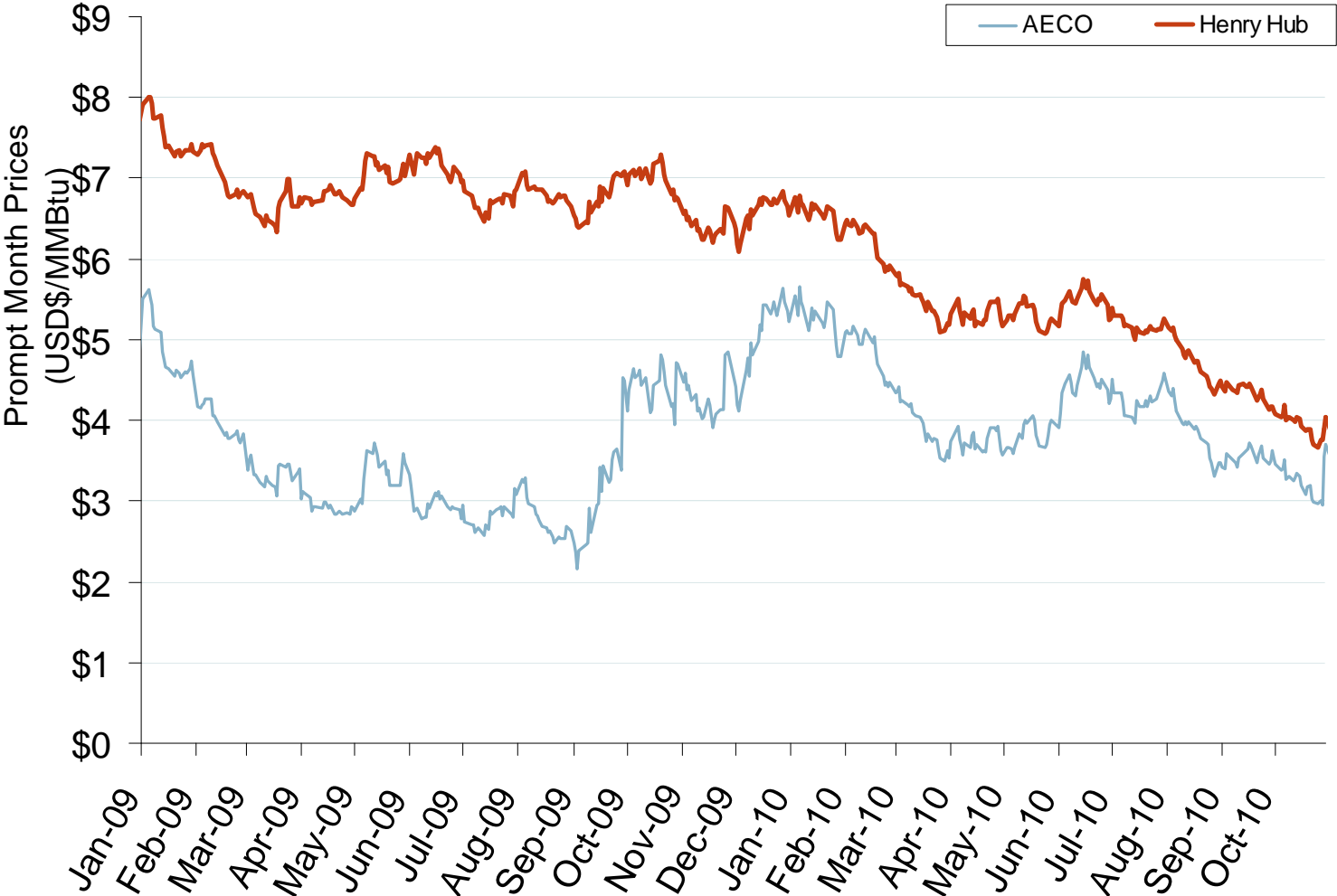


Atlantic Basin European and US Spot Natural Gas Prices



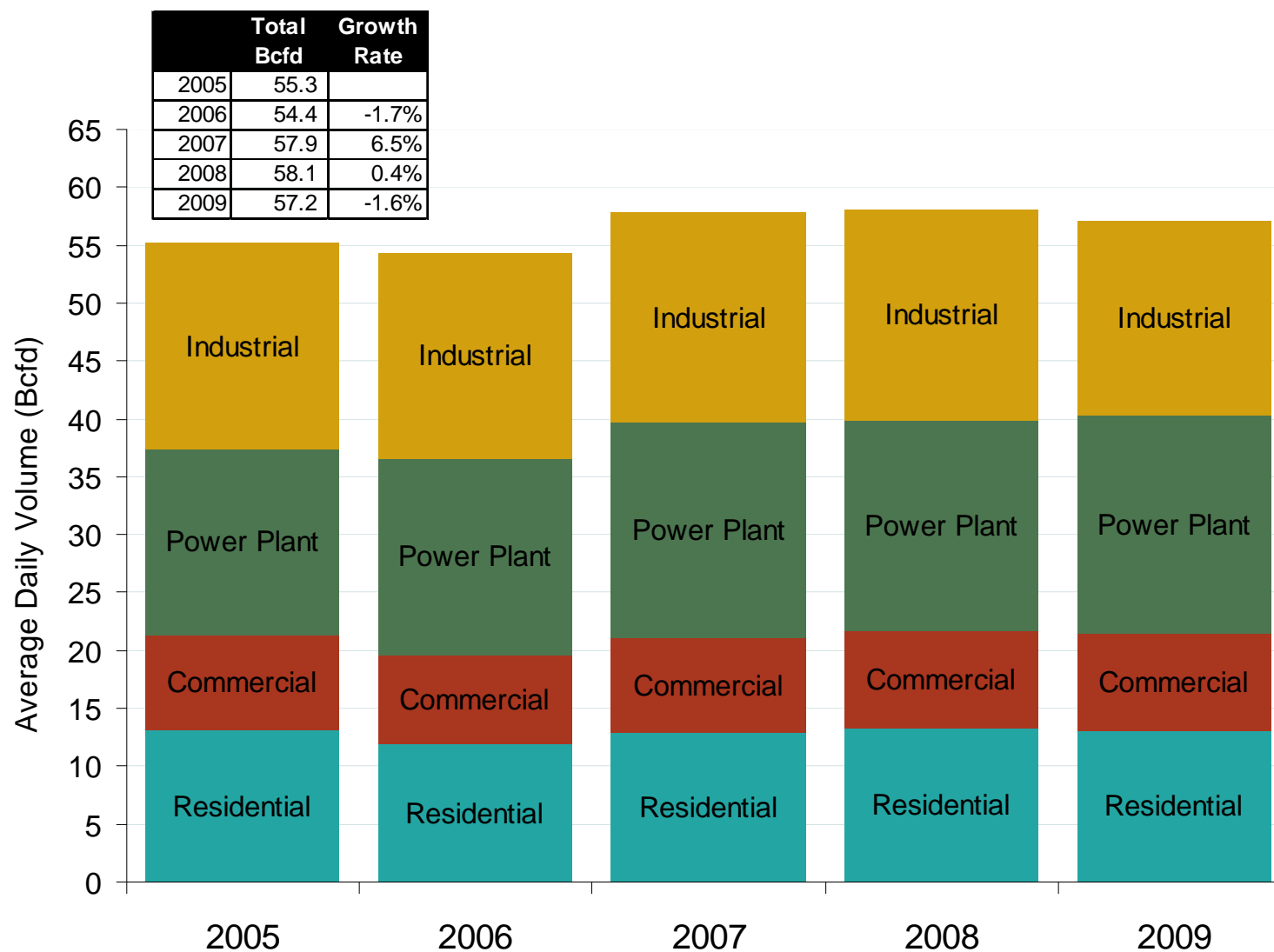
Source: Derived from *Bloomberg* and *ICE* data.
November 2010

Henry Hub and AECO Prompt-Month Futures Prices

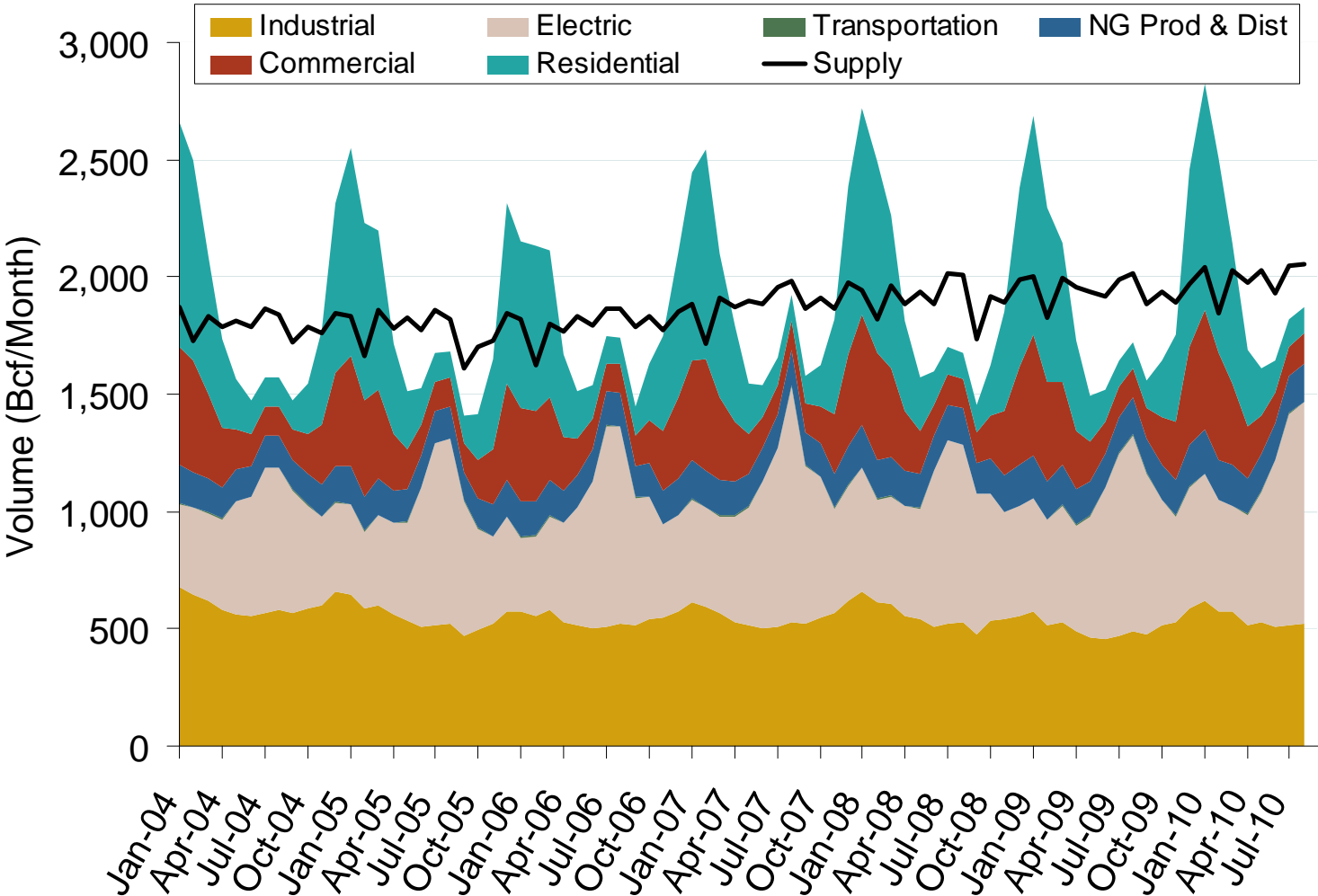


Source: Derived from ICE data.
November 2010

U.S. Natural Gas Consumption – Lower 48 States



Annual U.S. Natural Gas Consumption by Sector



Note: Supply includes lower 48 state production, net pipeline imports, and LNG imports.

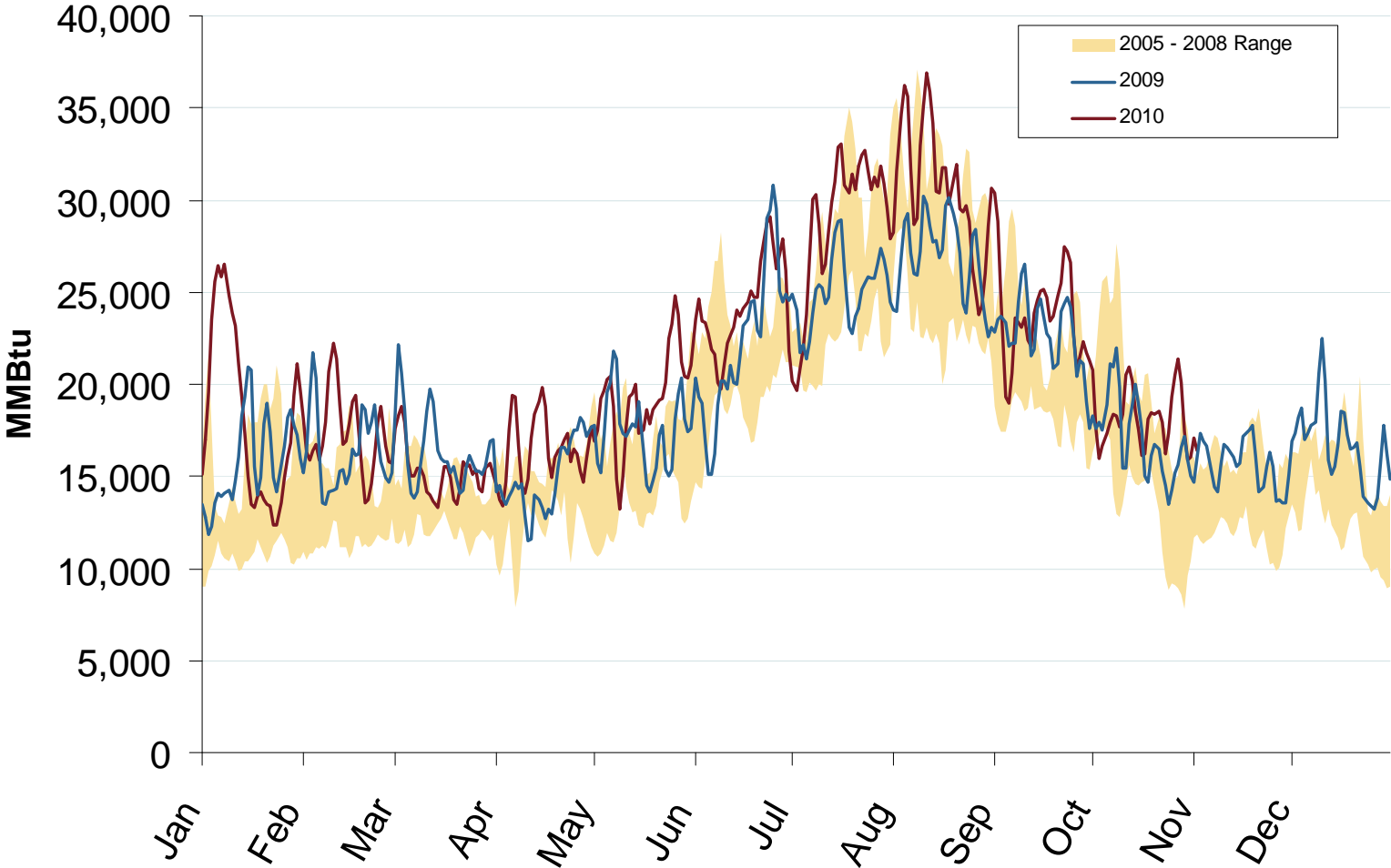
Source: Derived from EIA data
November 2010

Updated November 5, 2010

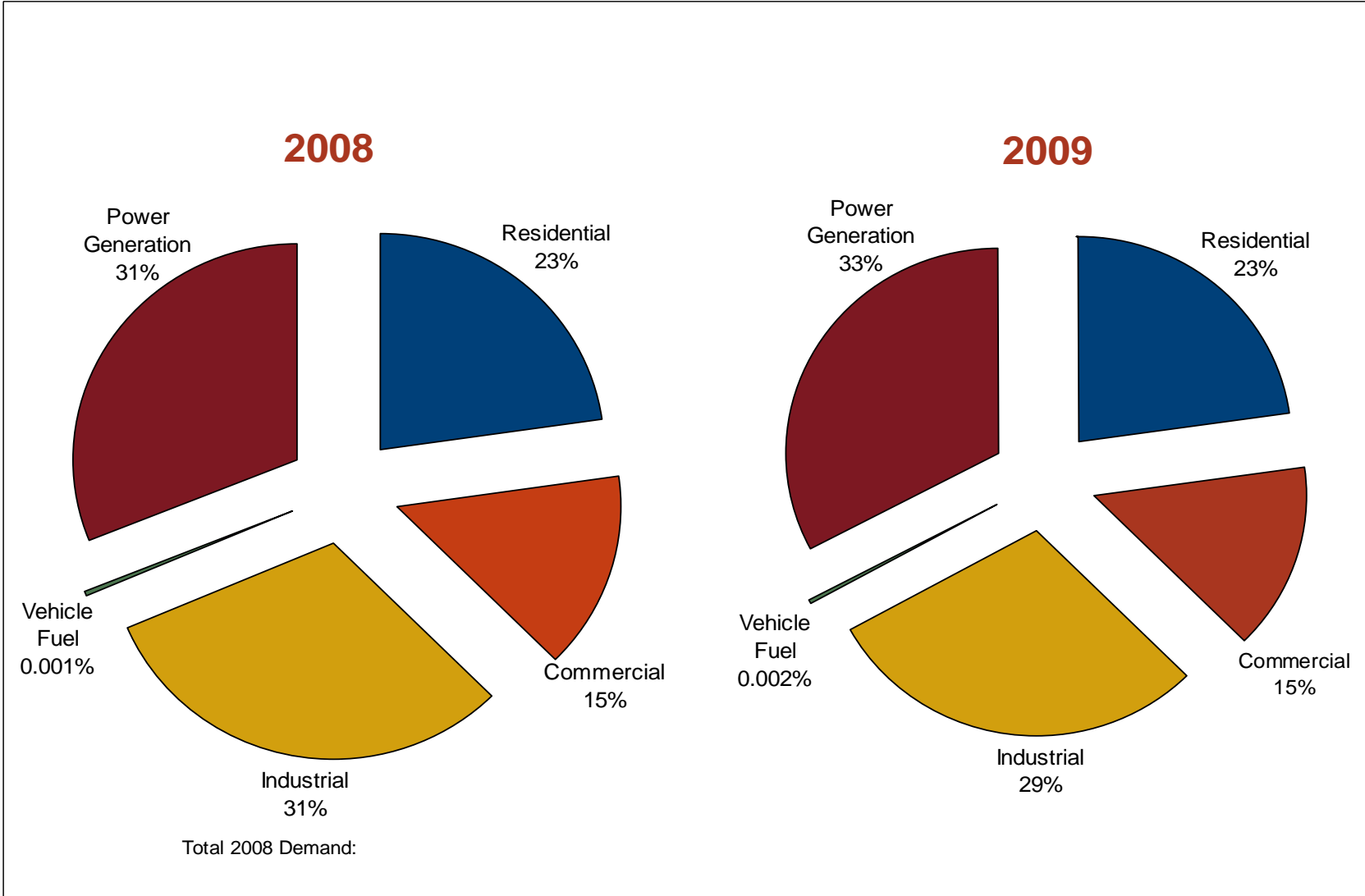
Year-to-date U.S. Natural Gas Consumption



U.S. Natural Gas Consumption for Power Generation



U.S. Annual Natural Gas Demand by Sector

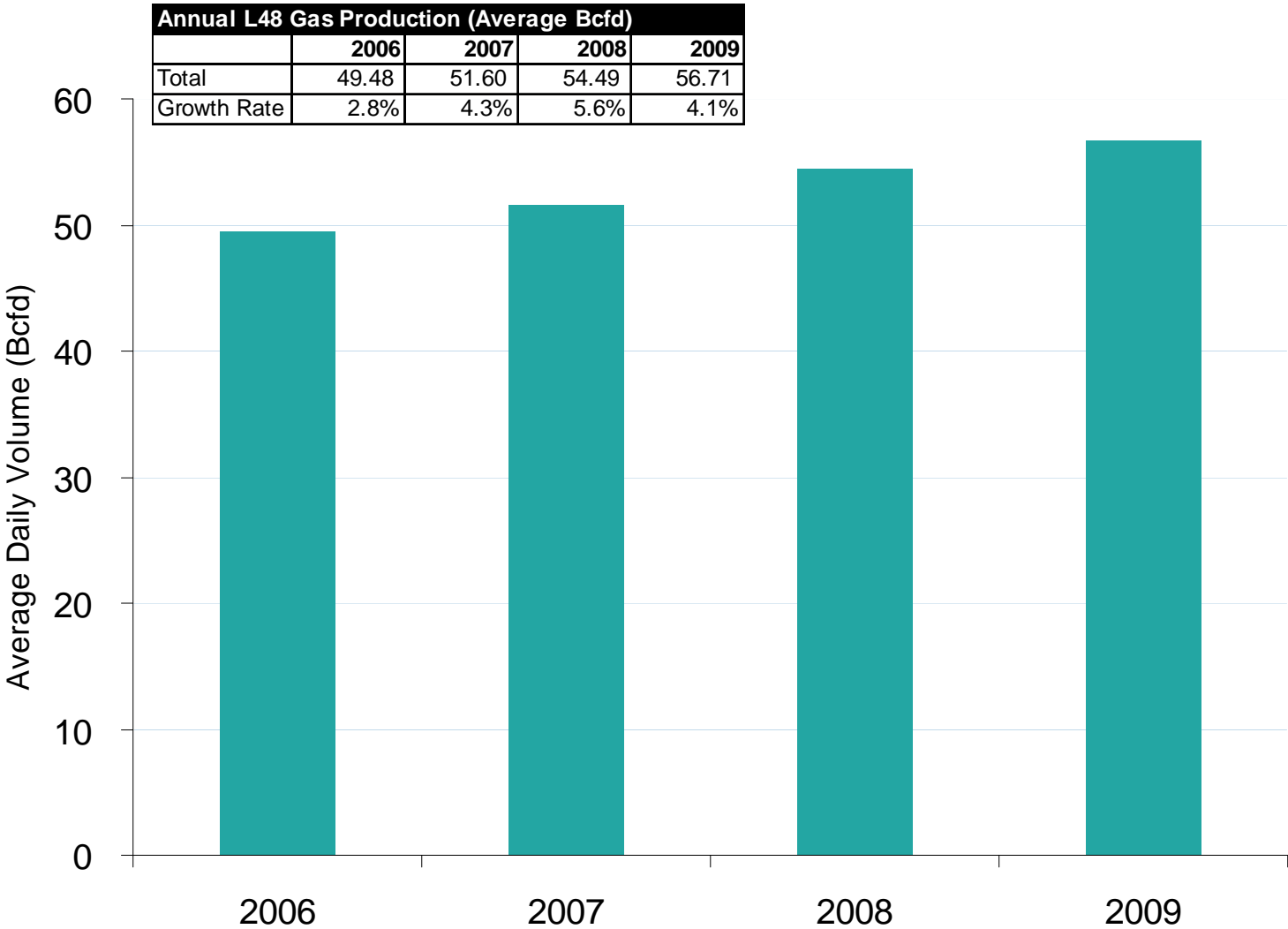


Source: Derived from EIA data.

November 2010

Updated March 5, 2010

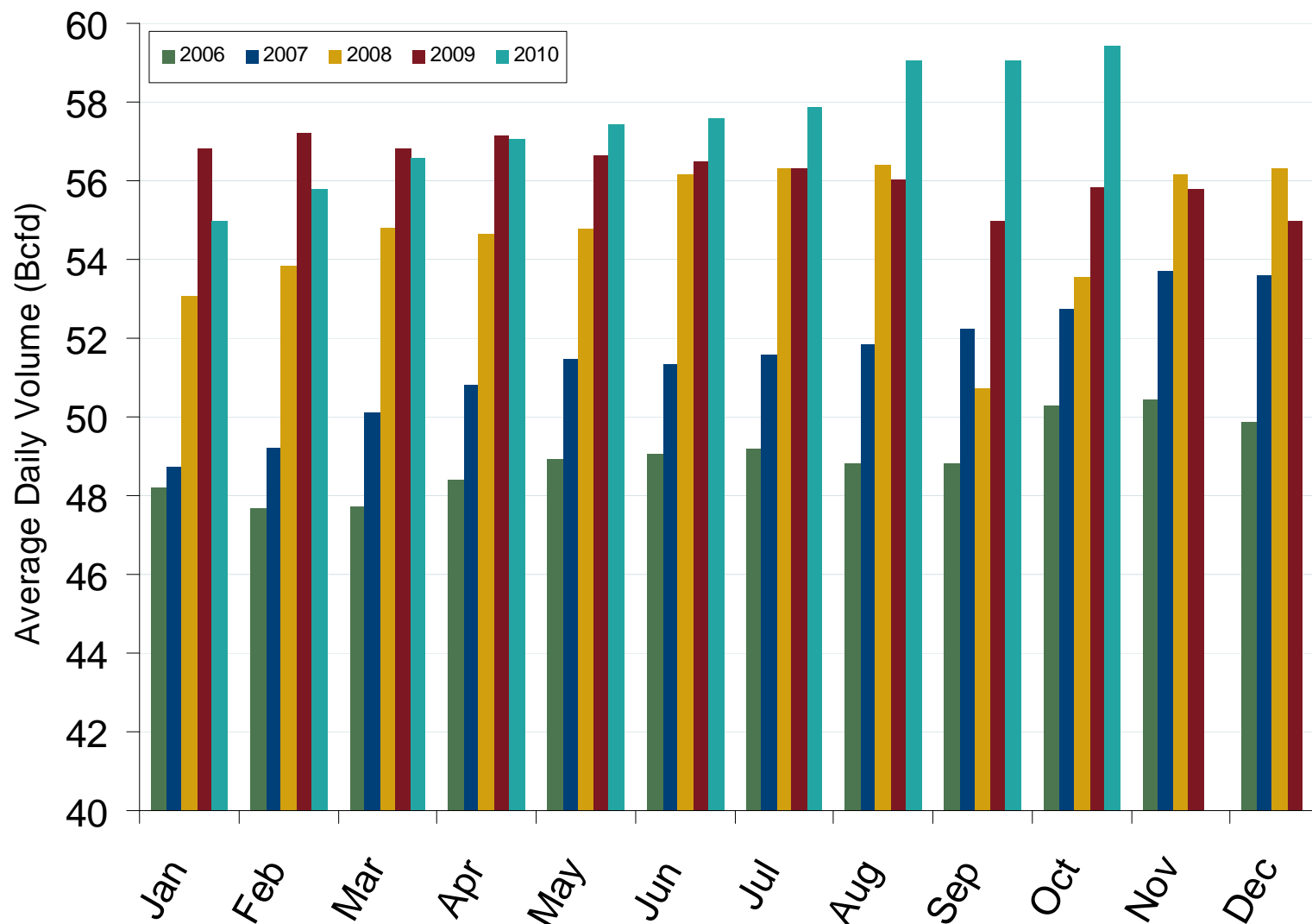
U.S. Dry Gas Production – Lower 48 States



Source: Derived from EIA data.
November 2010

Updated March 5, 2010

Monthly U.S. Dry Gas Production – Lower 48 States



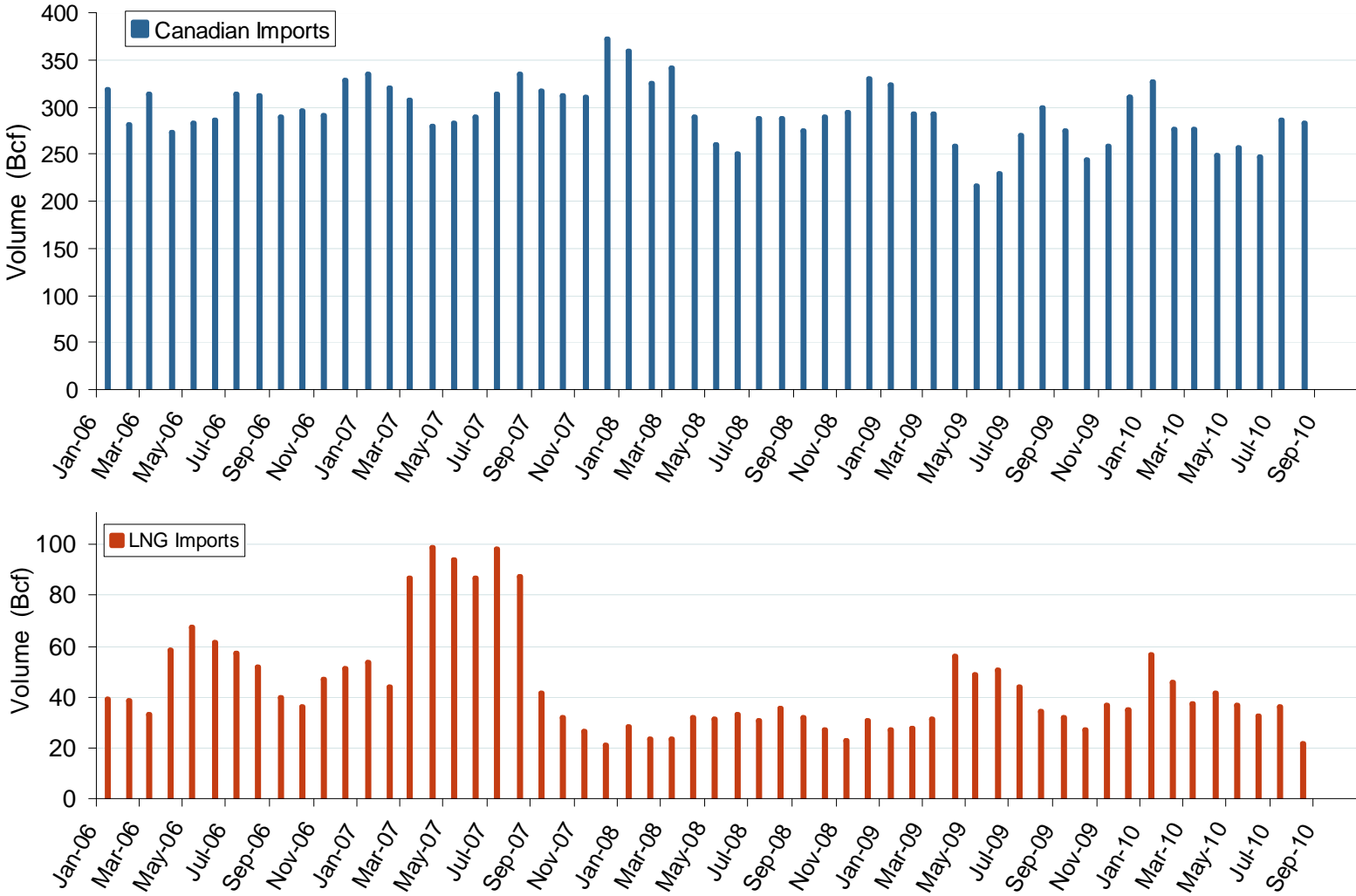
Source: Derived from *Bentek* data.

Note: Prior to July 2010, chart was derived from a combination of EIA and Bentek data
November 2010

Updated November 5, 2010

20021

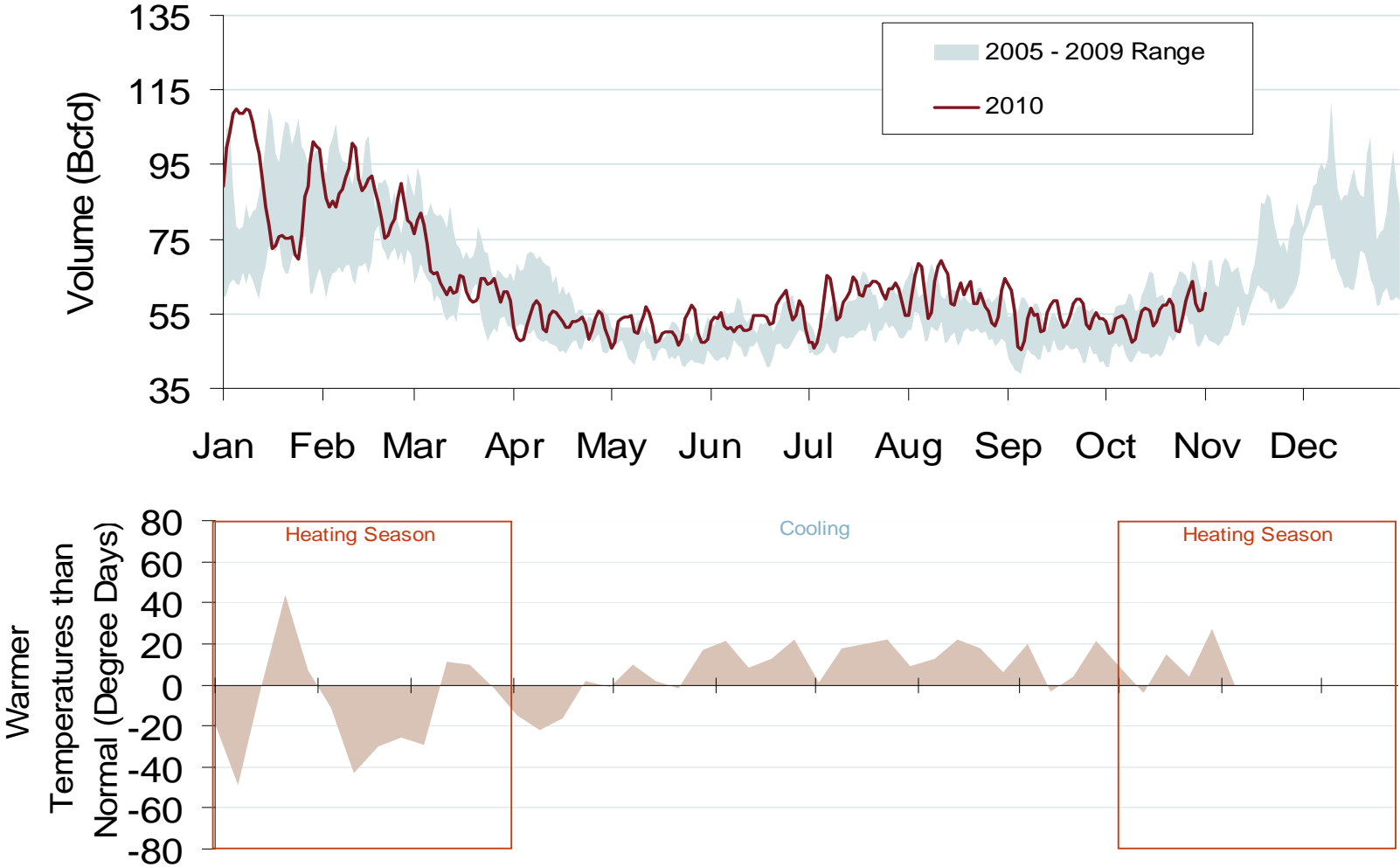
Canadian and LNG Natural Gas Imports Into the U.S.



Source: EIA Natural Gas Monthly
November 2010

Updated November 5, 2010

Total U.S. Natural Gas Demand (All Sectors) and Temperatures



Source: Derived from Bentek Energy and Weekly NOAA data.
November 2010

Estimated Recoverable NG For Select Shale Basins (TCF)

