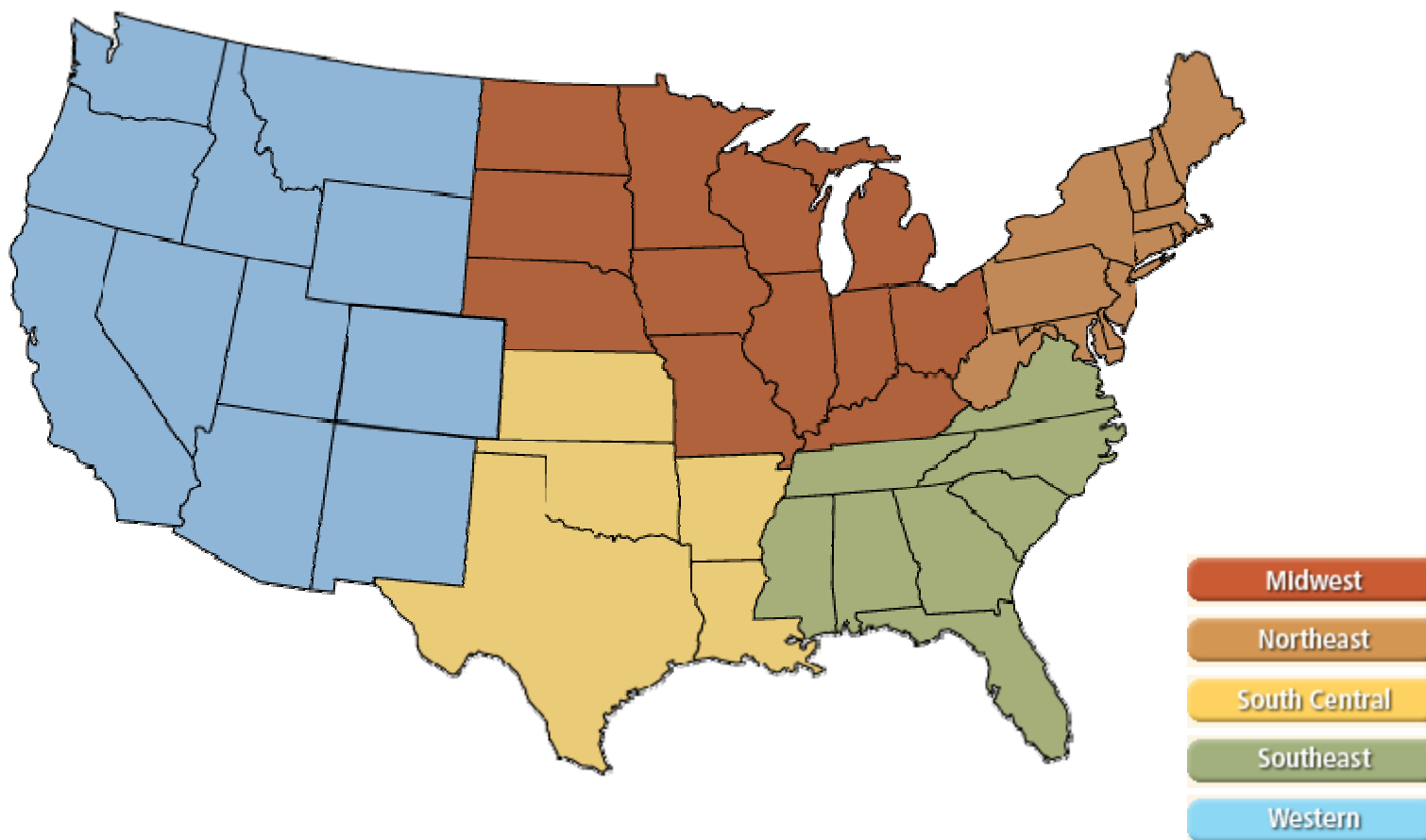
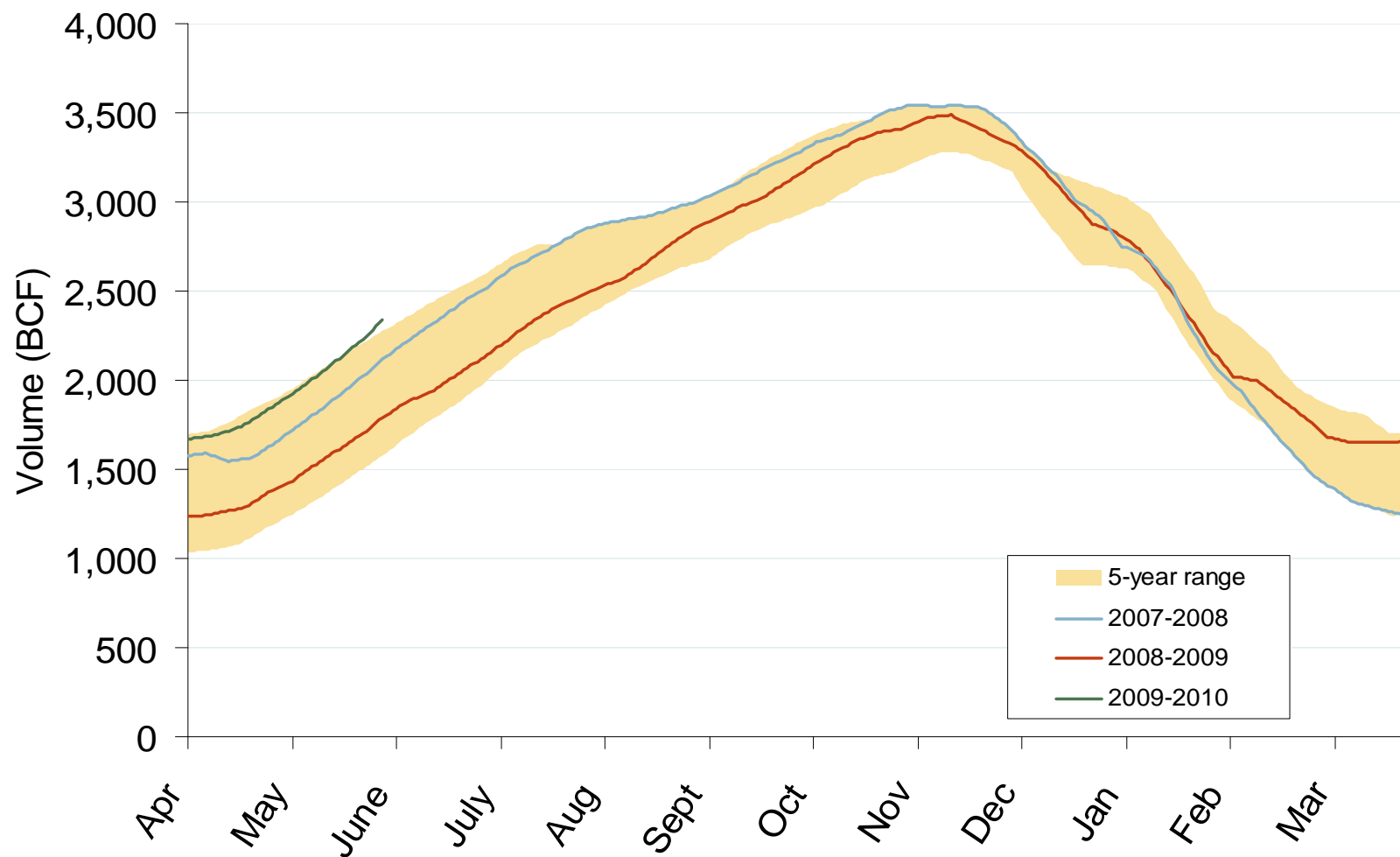


Natural Gas Market National Overview



Total U.S. Working Gas in Storage

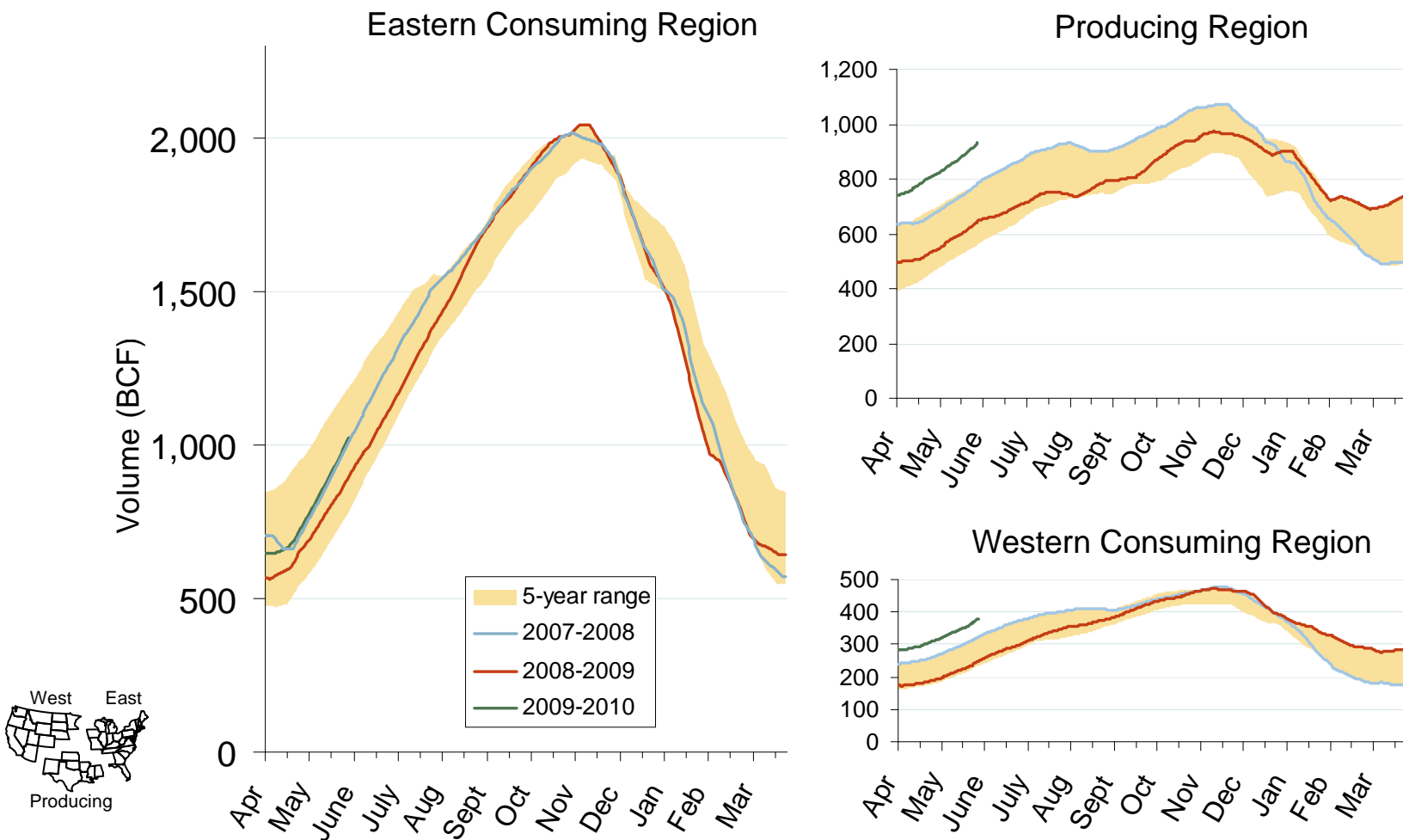


Source: Derived from EIA data.

Updated June 5, 2009

2003

Regional Totals of Working Gas in Storage

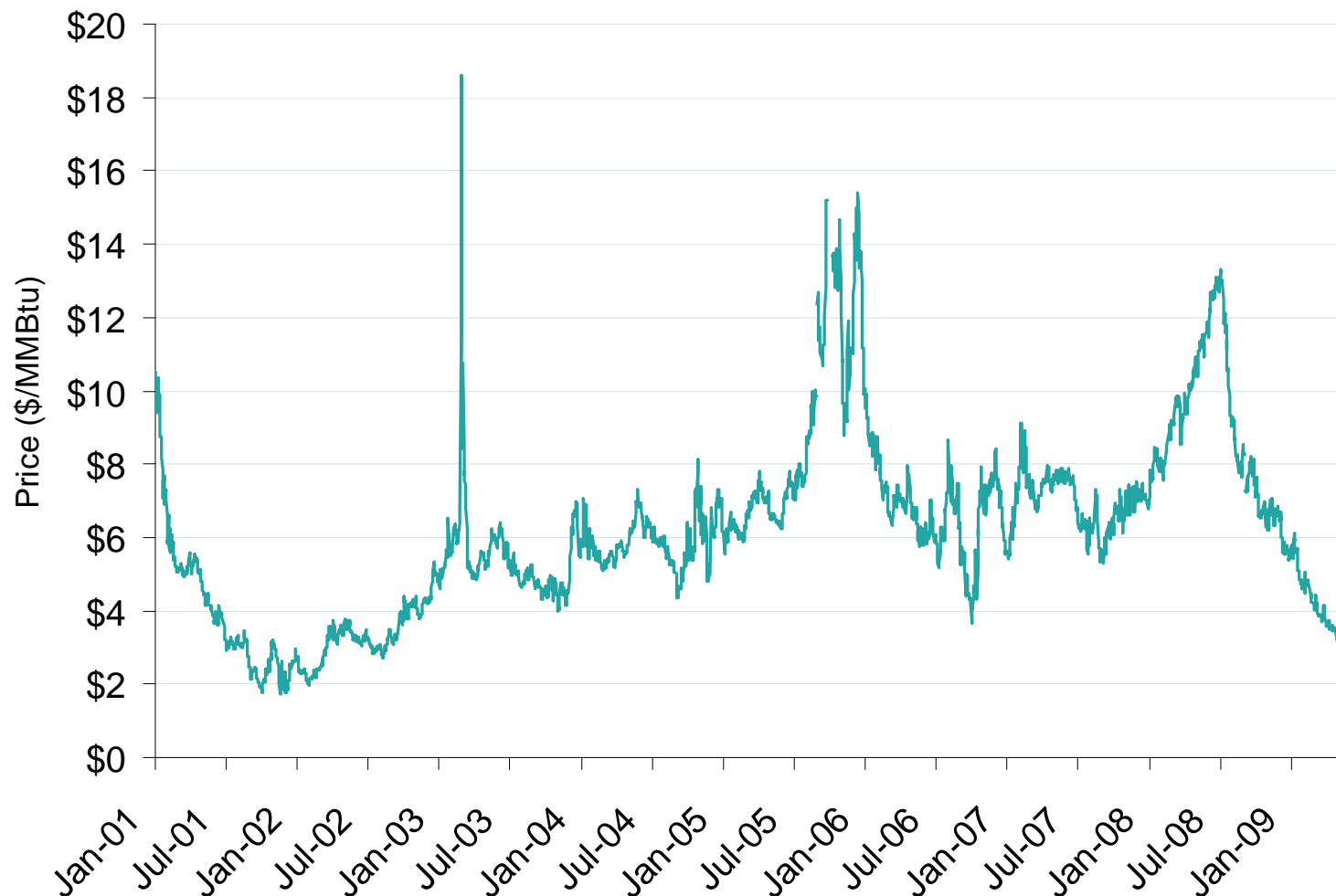


Source: Derived from EIA data.

Updated June 5, 2009

2004

Henry Hub Natural Gas Daily Spot Prices 2001-2009



Source: Derived from *Platts* data.

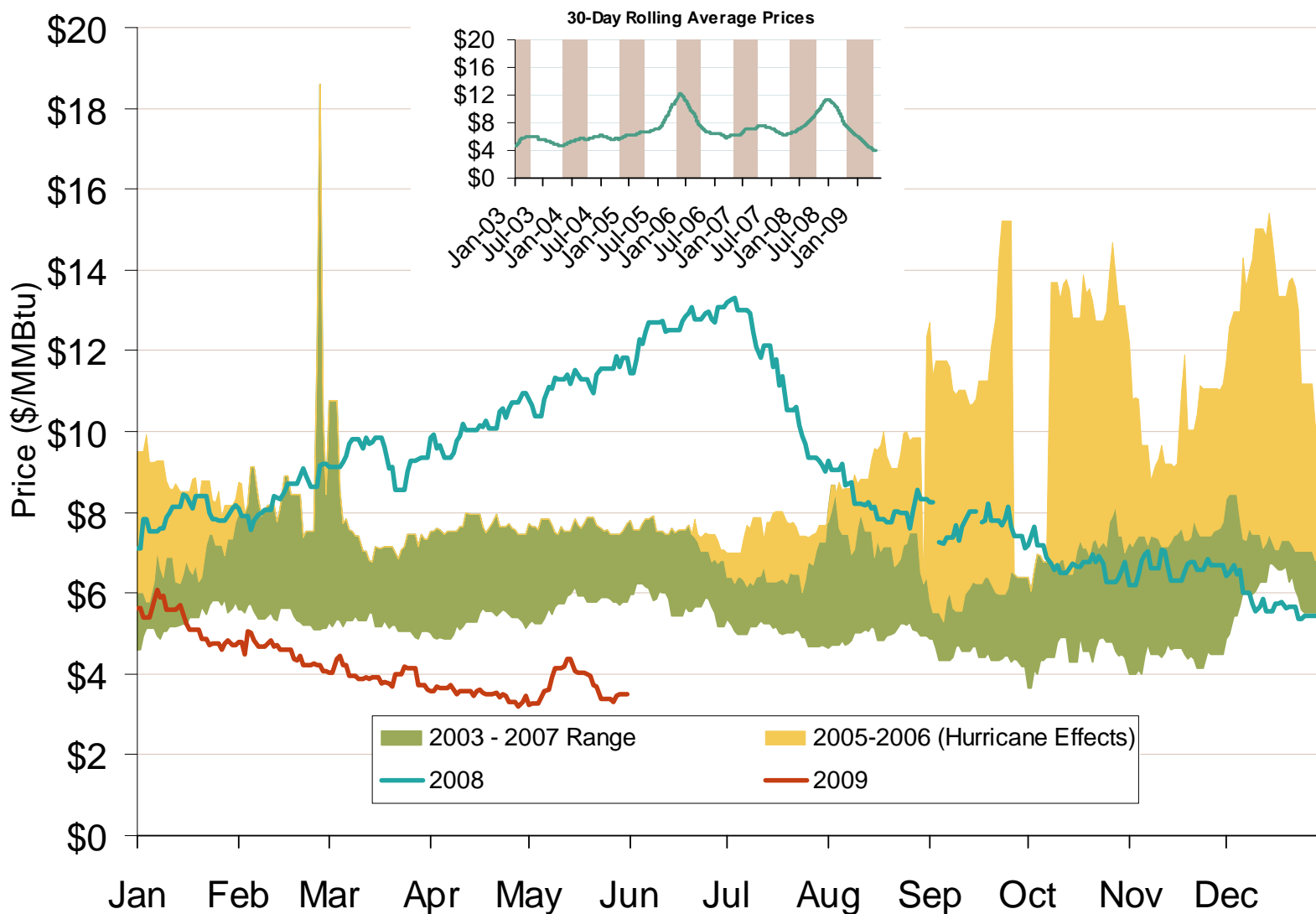
Updated June 5, 2009

2001

Natural Gas Market Overview: 5 Year Range of Henry Hub Spot Prices

Federal Energy Regulatory Commission • Market Oversight @ FERC.gov

Henry Hub Natural Gas Daily Spot Prices 2008, 2009 and 2003-2007 Year Range



Source: Derived from *Platts* data.

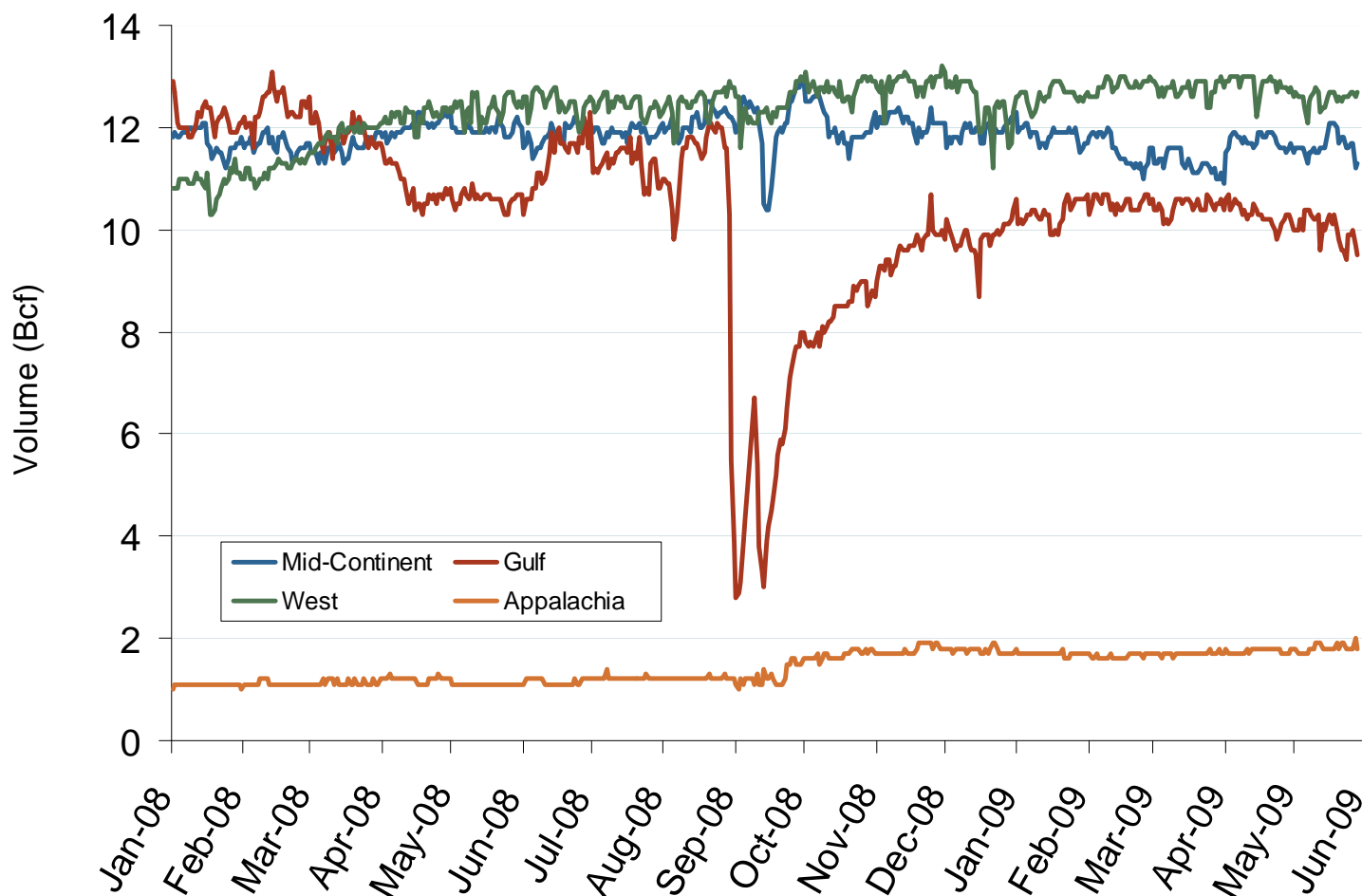
Updated June 5, 2009

2085

Natural Gas Market Overview: Production By Region

Federal Energy Regulatory Commission • Market Oversight @ FERC.gov

Regional Natural Gas Production

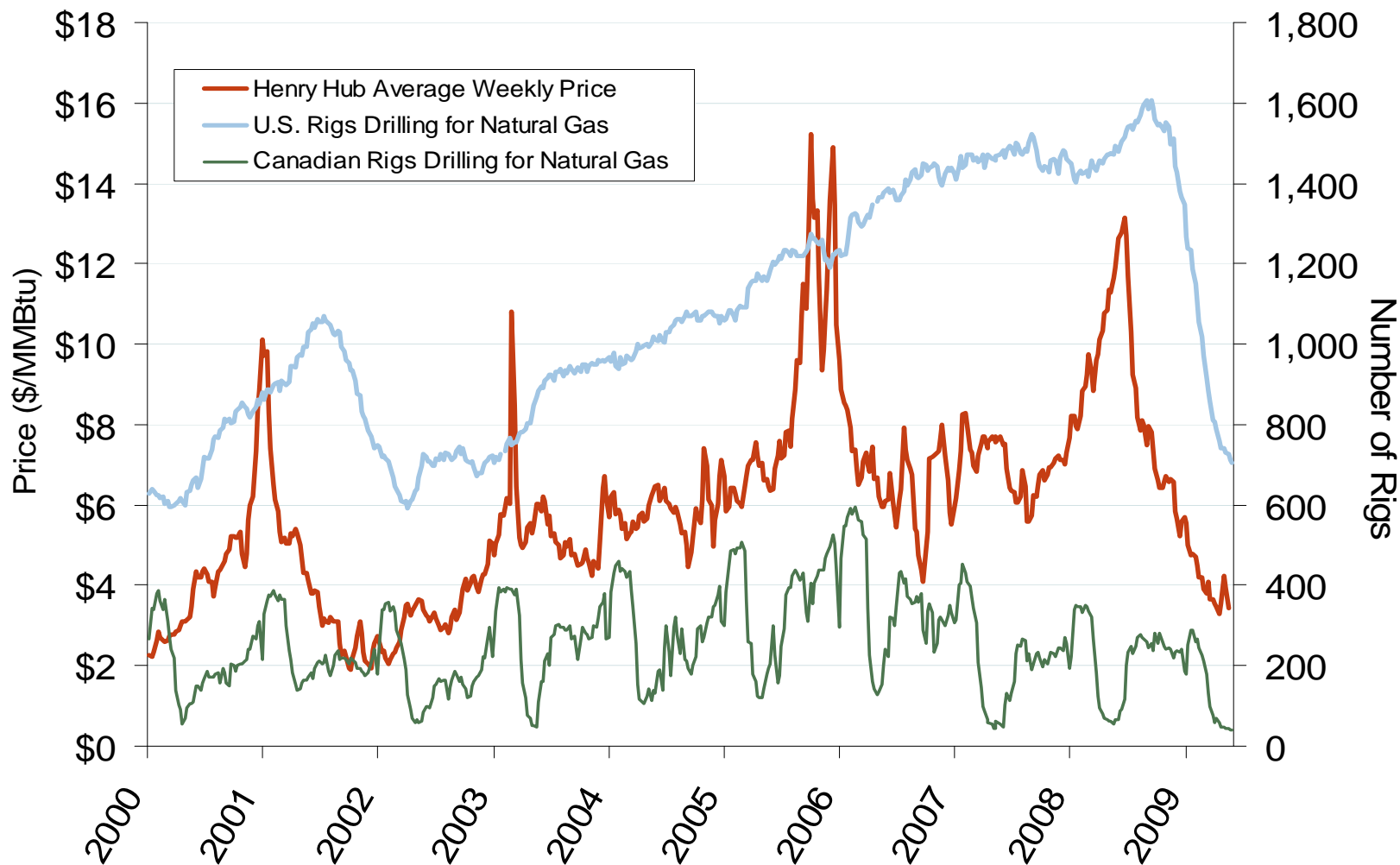


Source: Derived from *Bentek* data.

Updated June 5, 2009

2182

U.S. and Canadian Natural Gas Drilling Rig Count and Daily Spot Prices

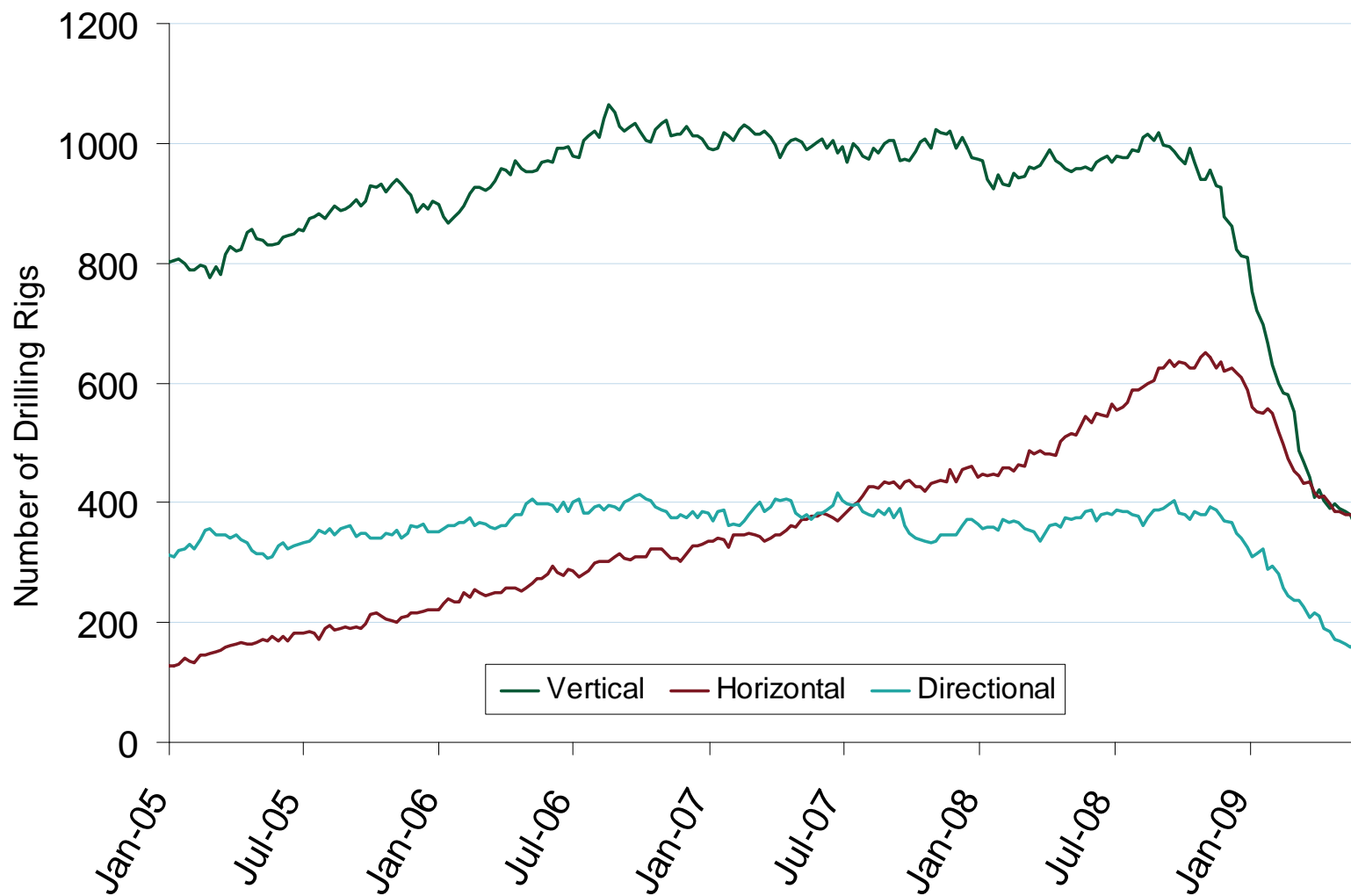


Source: Derived from *Platts* and *Baker Hughes* data.

Updated June 5, 2009

2007

U.S. Oil and Natural Gas Drilling Rig Count by Type

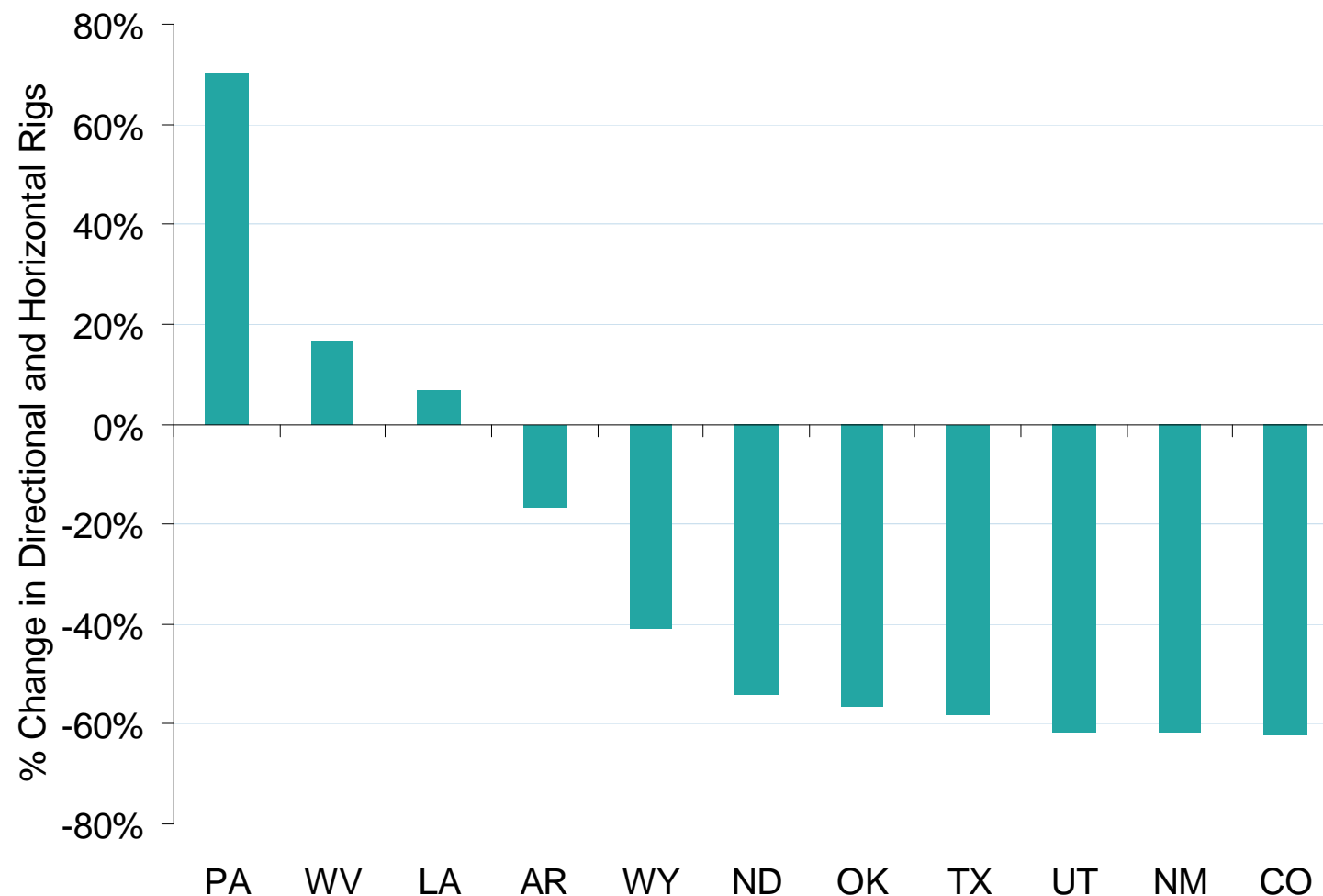


Source: Derived from *Platts* and *Baker Hughes* data.

Updated June 5, 2009

20018

State Level Oil and NG Drilling Rig Count Change From the September 2008 Peak

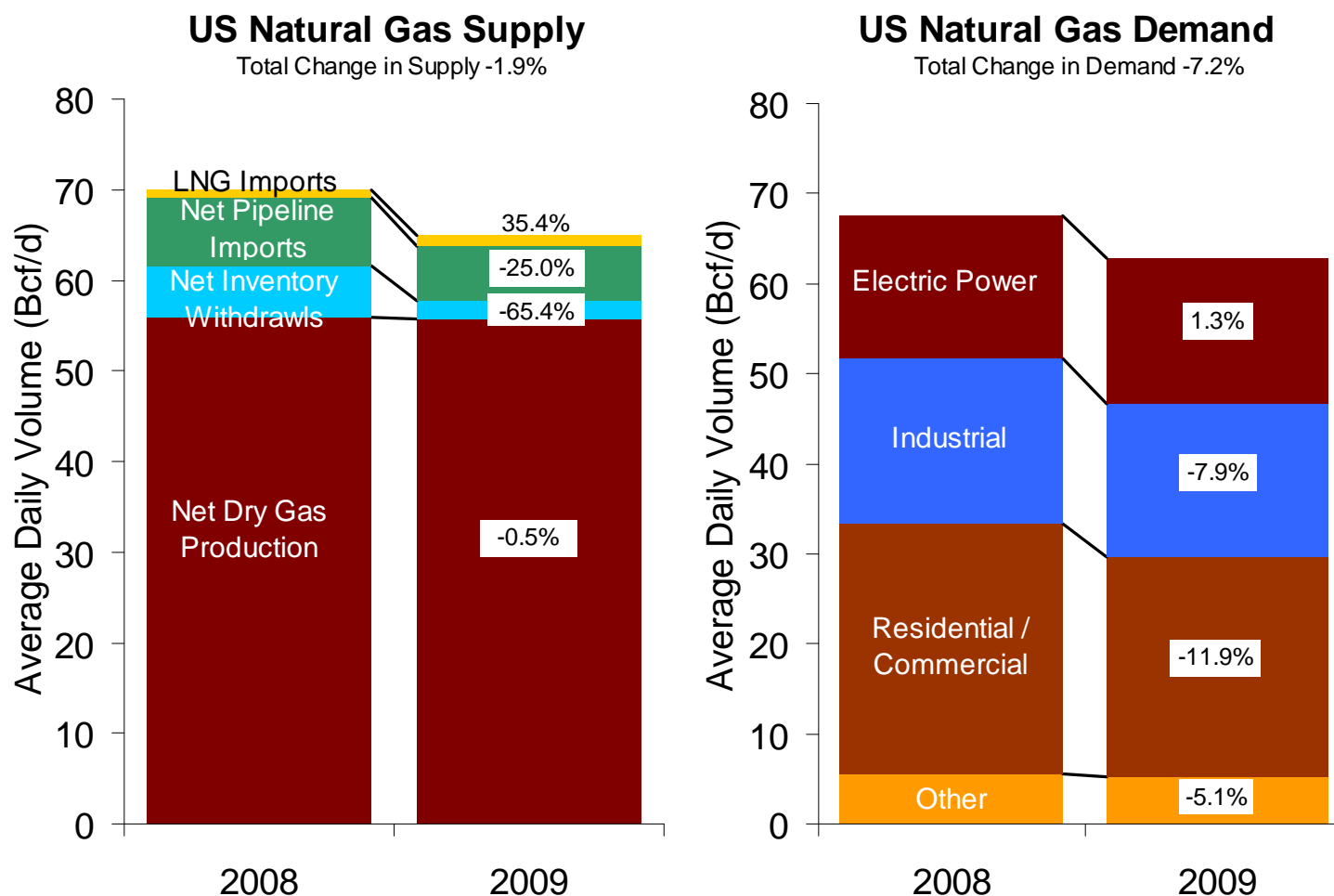


Source: Derived from *Platts* and *Baker Hughes* data.

Updated June 5, 2009

20019

U.S. Natural Gas Supply and Demand 2008 vs. 2009: January - May



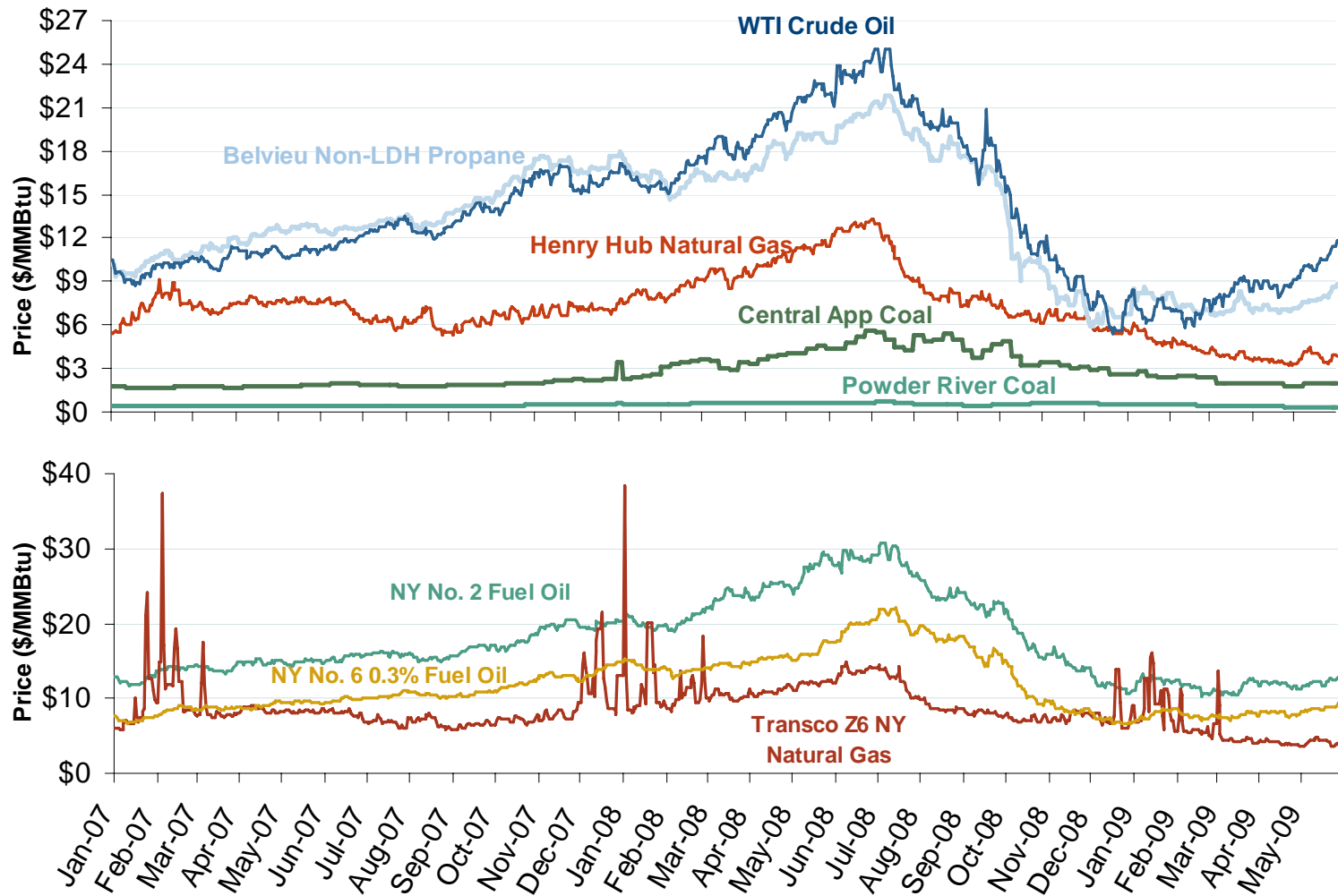
Source: Derived from Bentek data.

Updated June 5, 2009

Natural Gas Market Overview: Oil, Coal and Natural Gas Prices

Federal Energy Regulatory Commission • Market Oversight @ FERC.gov

Oil, Coal and Natural Gas Daily Spot Prices



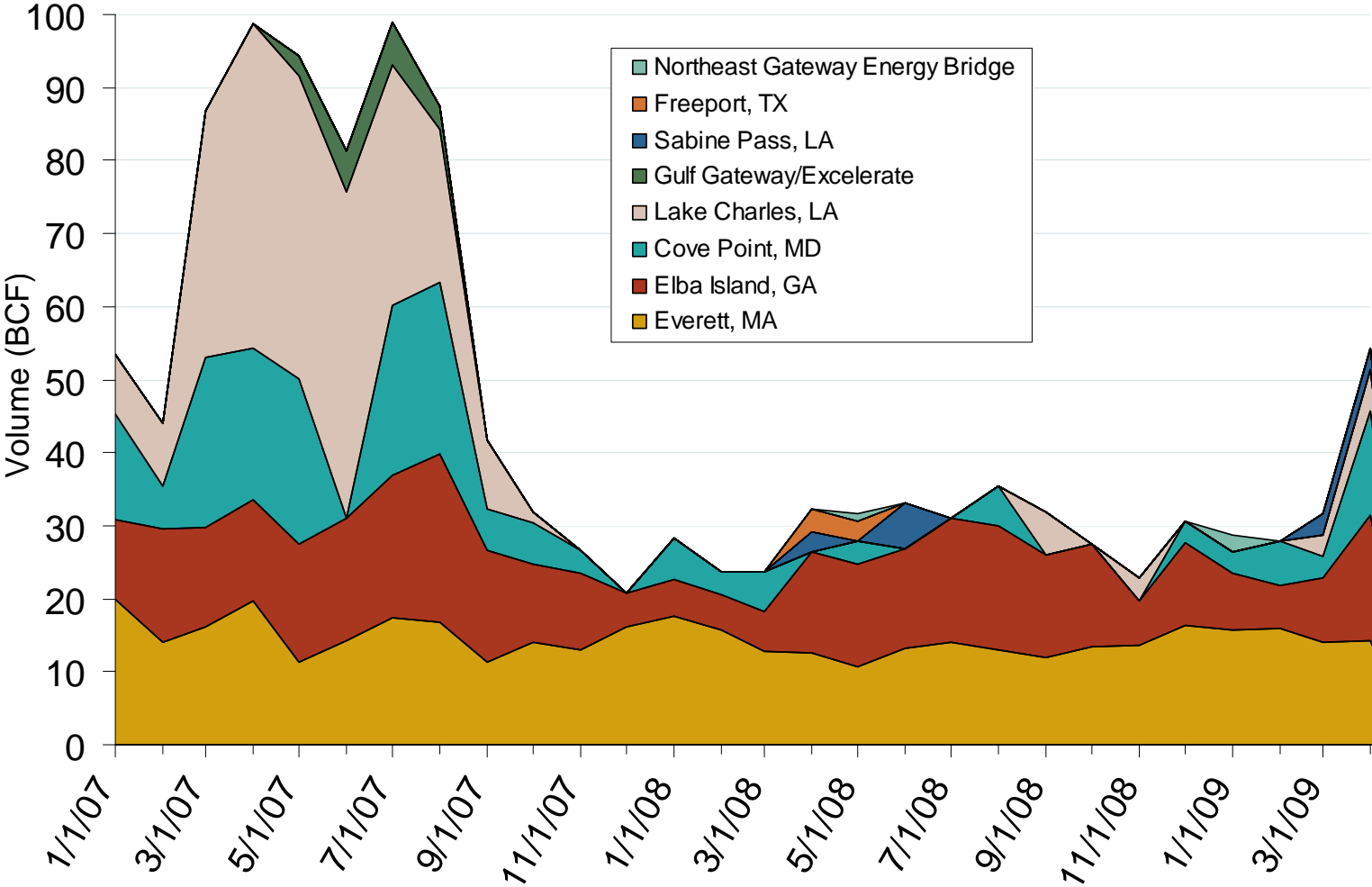
Source: Derived from ICE and Bloomberg data.

Note: Coal prices are quoted in \$/ton. Conversion factors to \$/MMBtu are based on contract specifications of 12,000 btus/pound for Central Appalachian coal and 8800 btus/pound for Powder River Basin coal.

Updated June 5, 2009

2160

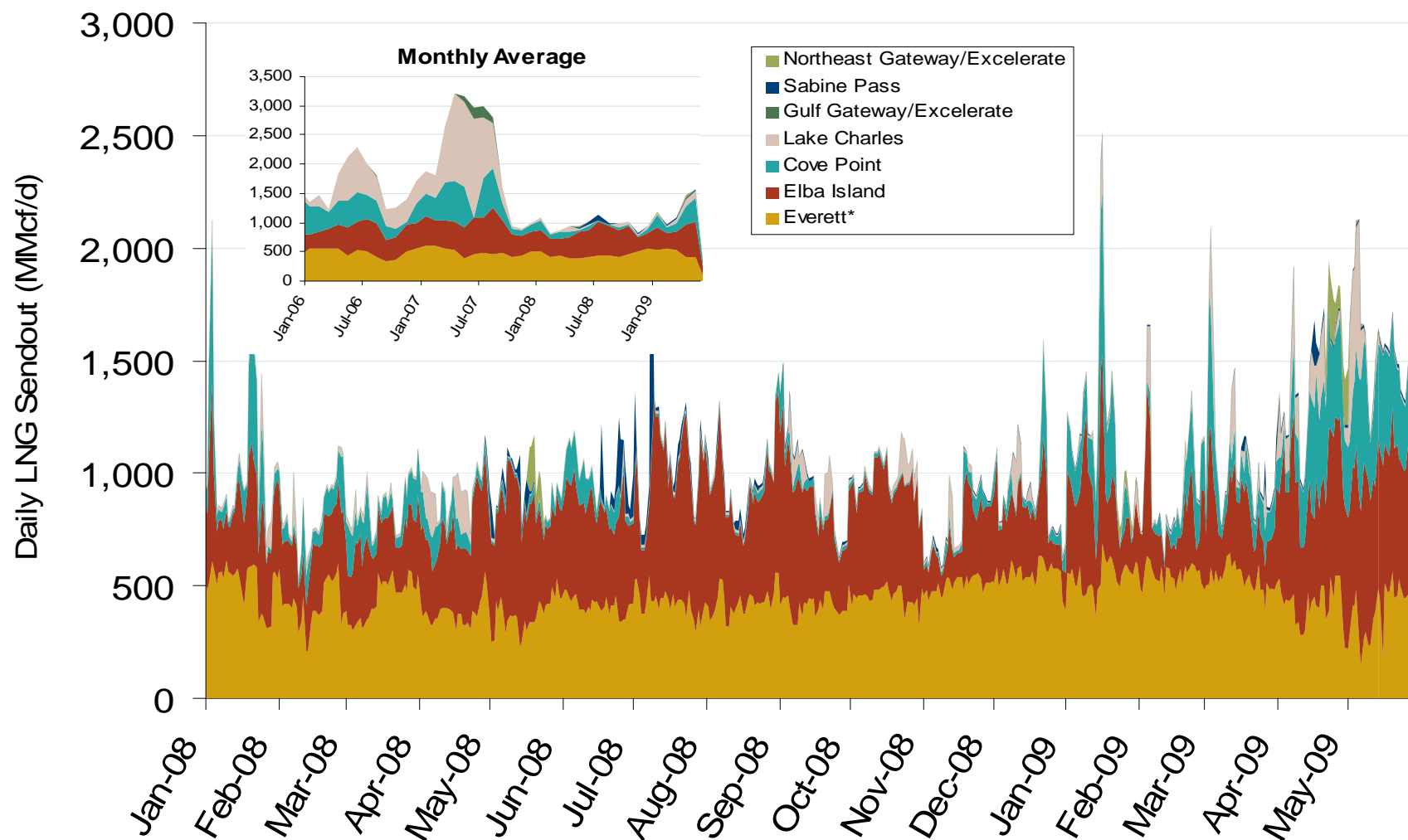
Monthly Gas Imports at Existing U.S. LNG Facilities



Source: Derived from DOE Office of Fossil Energy data.

Updated June 5, 2009

Daily Gas Sendout from Existing LNG Facilities



Source: Derived from Bentek data.

* Everett data includes flows onto the AGT and TGP interstate lines, plus estimates of flows to the Mystic 7 power plant, Keyspan Boston Gas, and LNG trucked out of the terminal. Excludes Freeport LNG which flows via intrastate pipelines.

Updated June 5, 2009

World LNG Estimated June 2009 Landed Prices



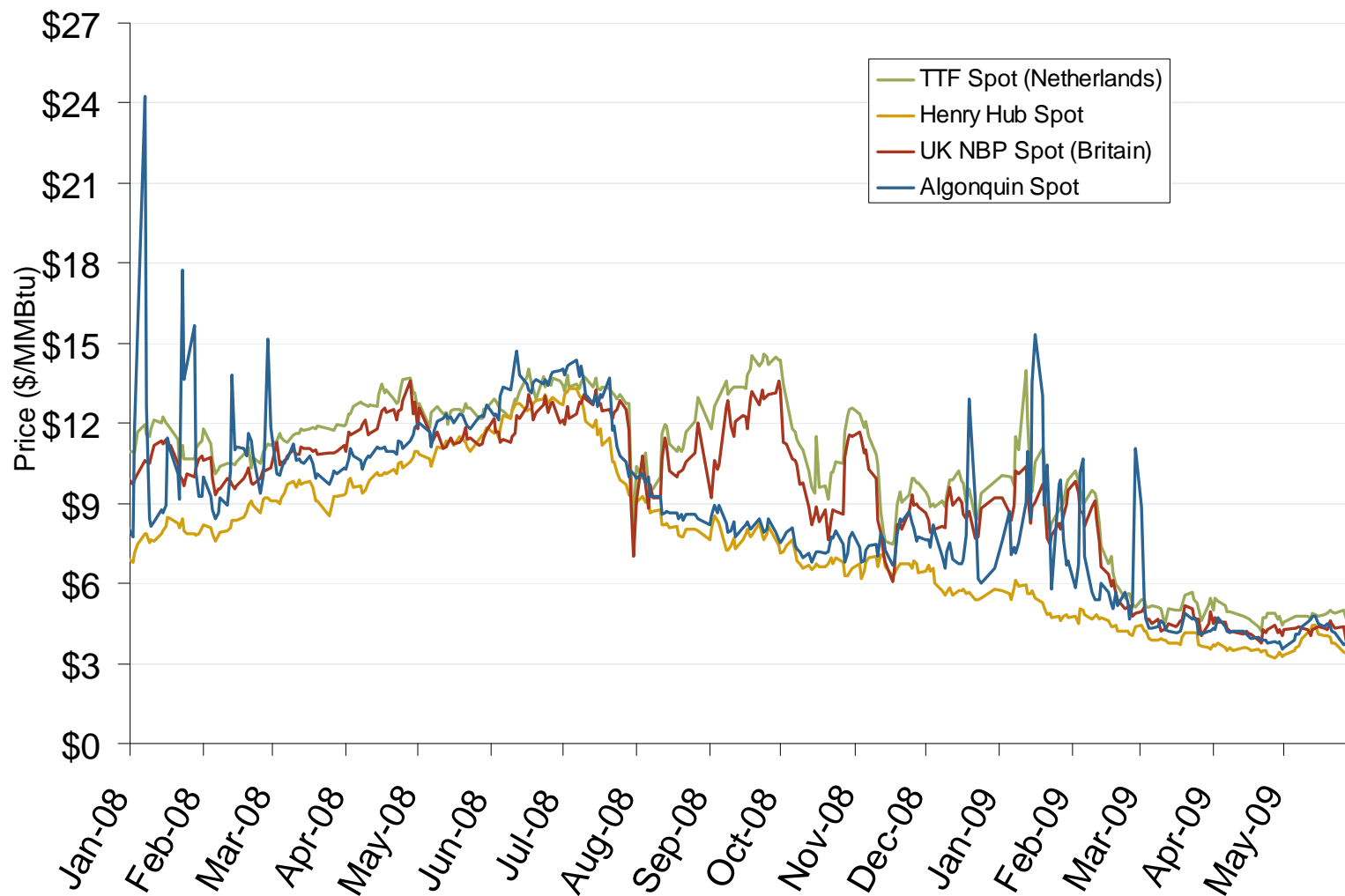
Source: *Waterborne Energy, Inc.* Data in \$US/MMBtu.

Updated June 5, 2009

2169

Natural Gas Market Overview: European & US Gas Prices

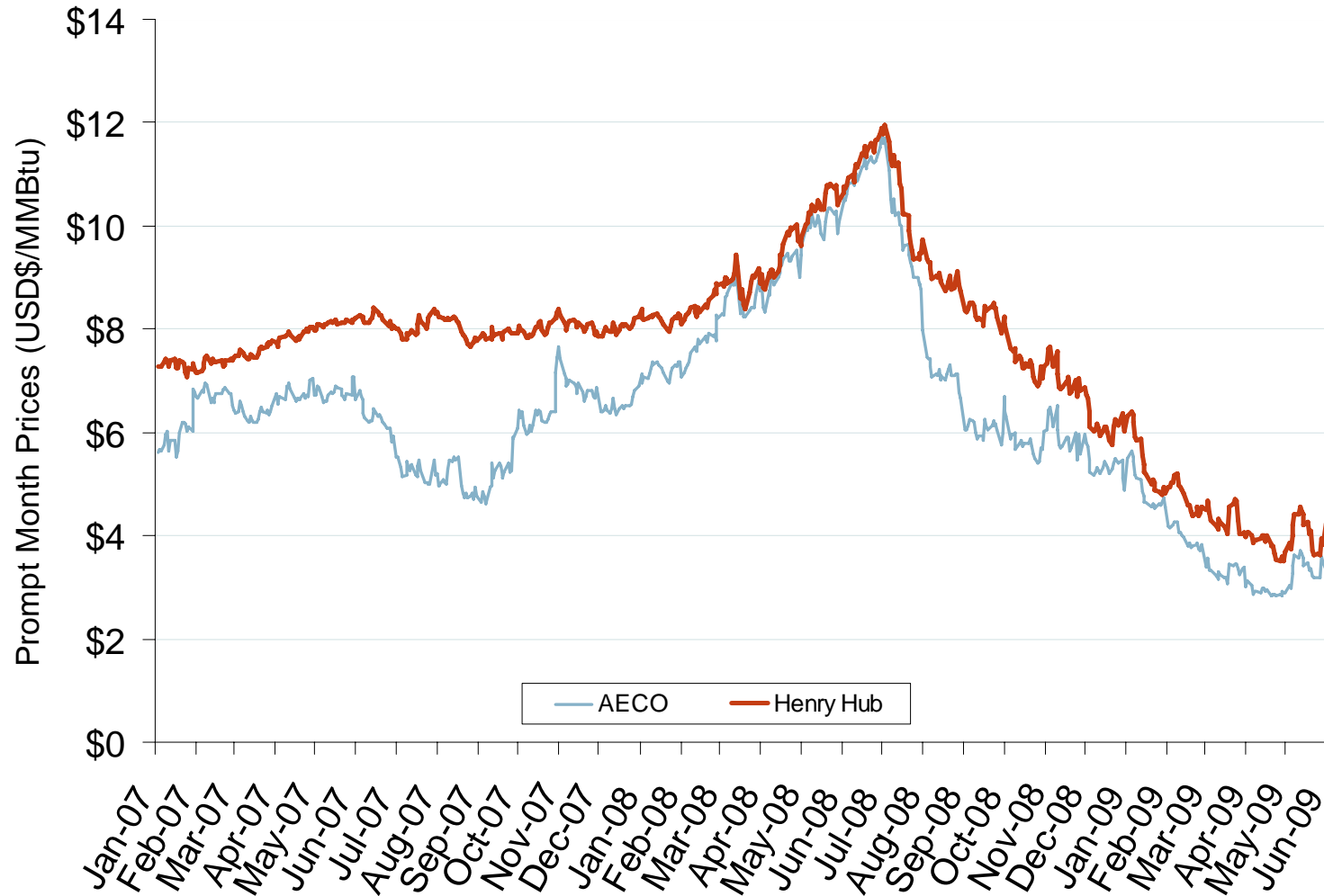
Federal Energy Regulatory Commission • Market Oversight @ FERC.gov

Atlantic Basin European and US Spot Natural Gas PricesSource: Derived from *Bloomberg* and *ICE* data.

Updated June 5, 2009

2162

Henry Hub and AECO Prompt-Month Futures Prices



Source: Derived from ICE data.

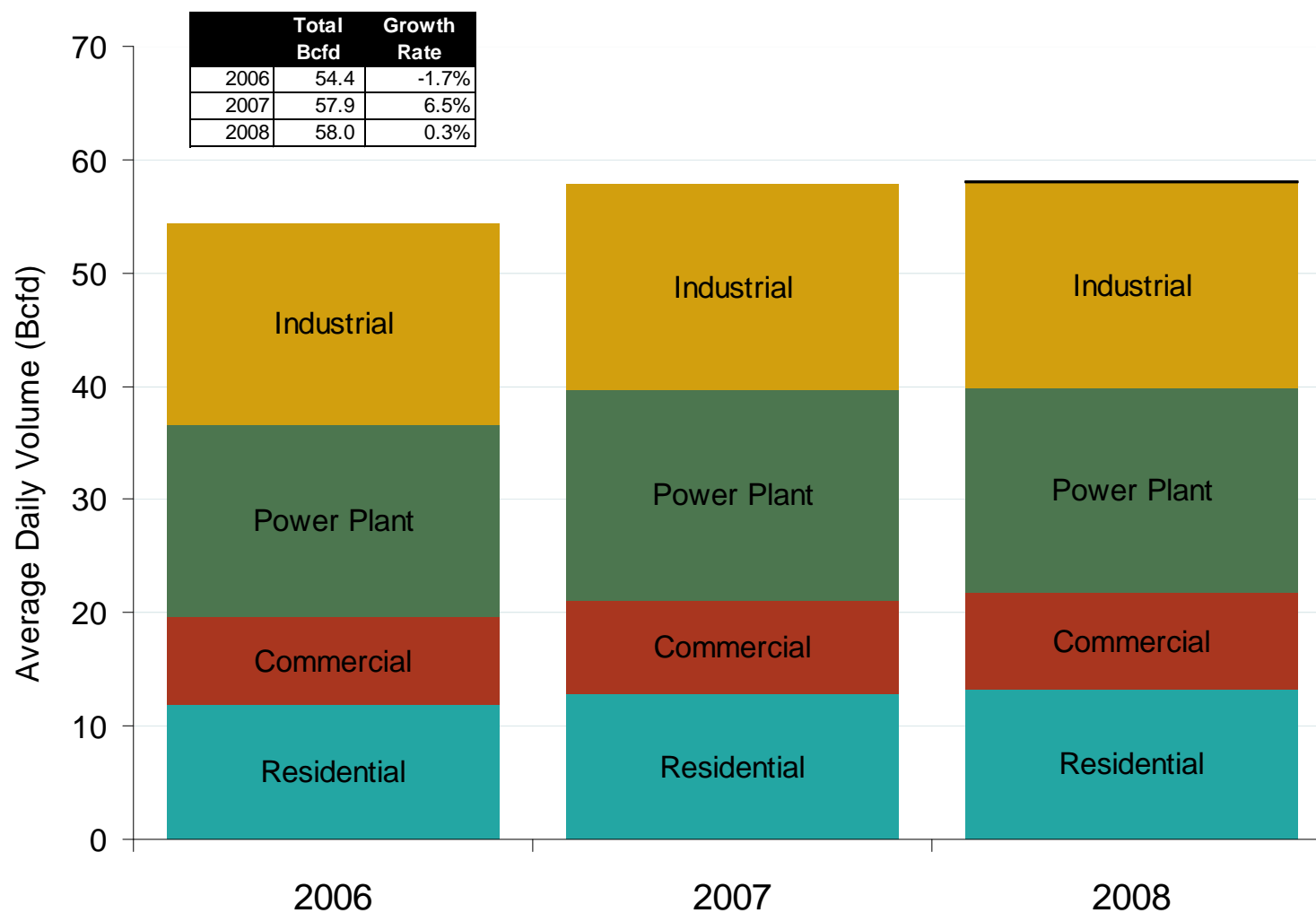
Updated June 5, 2009

2172

Natural Gas Market Overview: Annual NG Consumption

Federal Energy Regulatory Commission • Market Oversight @ FERC.gov

U.S. Natural Gas Consumption – Lower 48 States

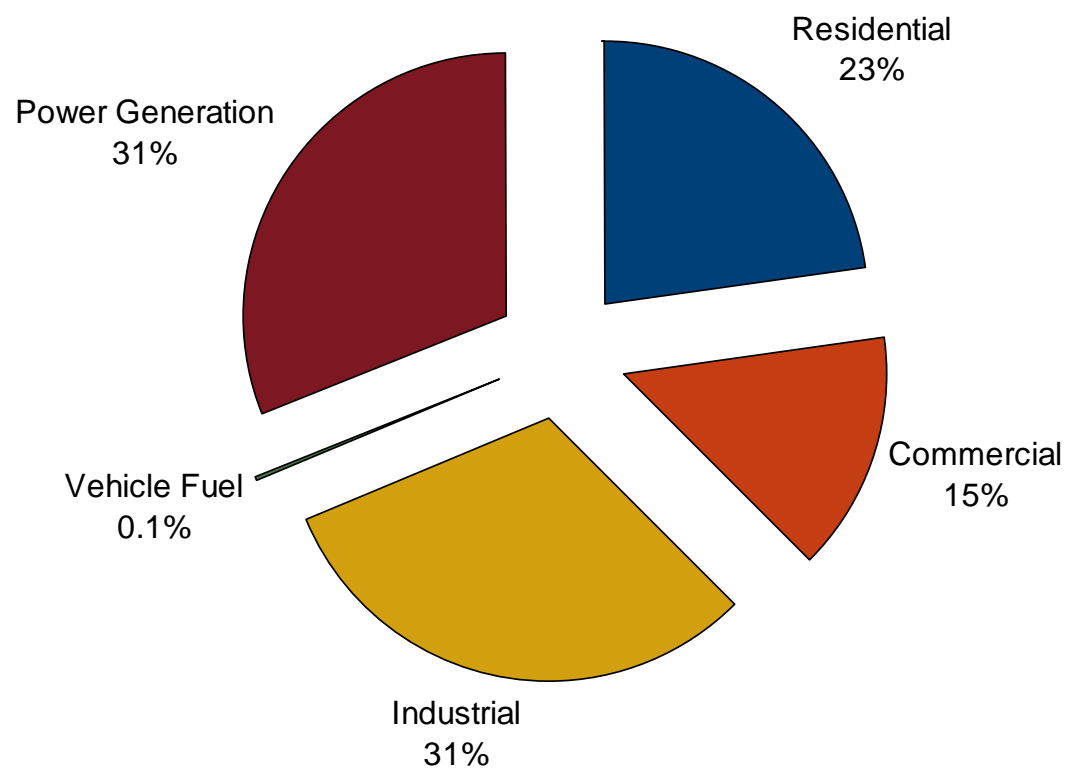


Source: Derived from EIA data

Updated April 7, 2009

20012

U.S. Natural Gas Demand by Sector 2008

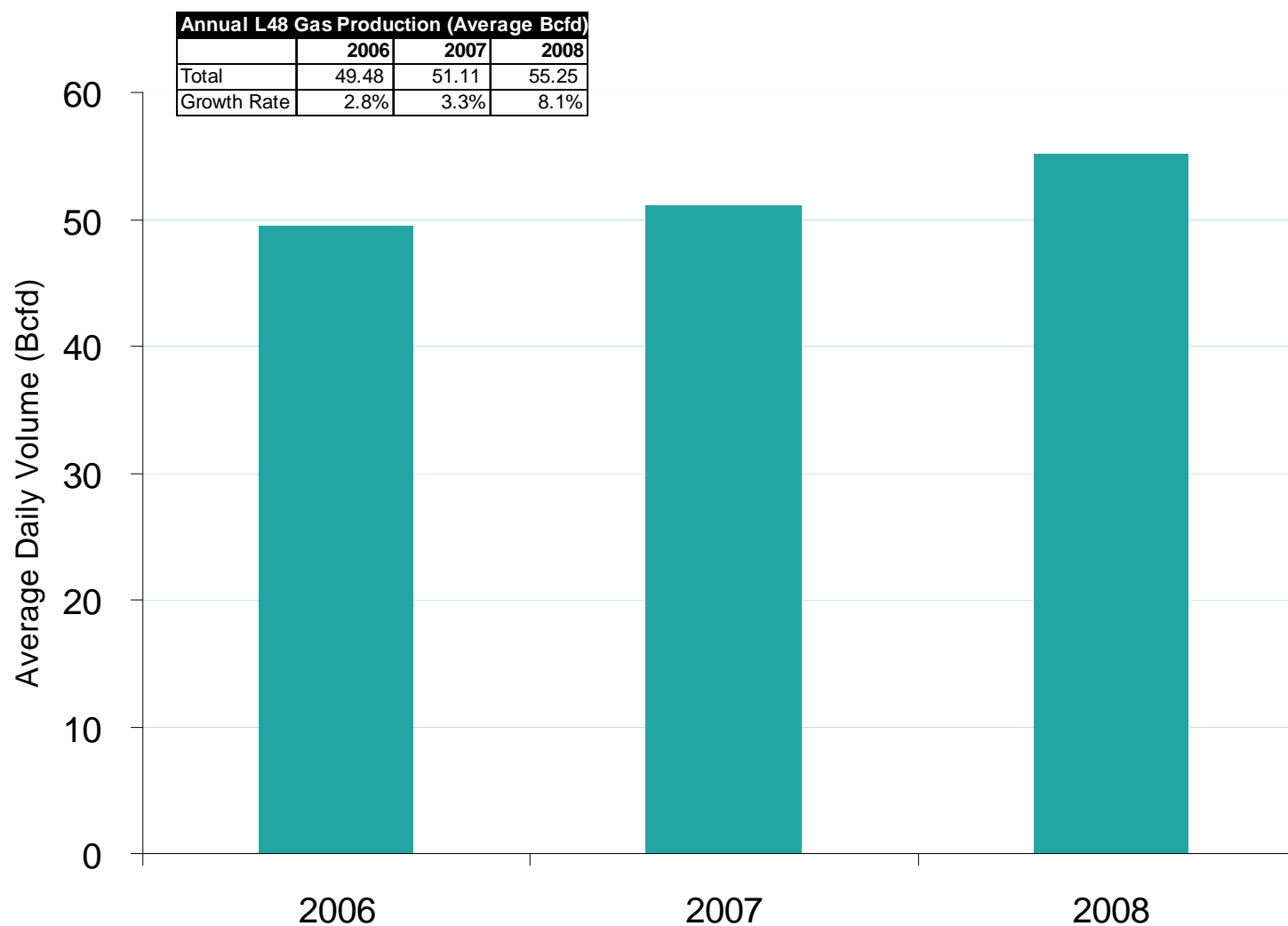


Source: Derived from EIA data.

Updated April 7, 2009

2002

U.S. Dry Gas Production – Lower 48 States

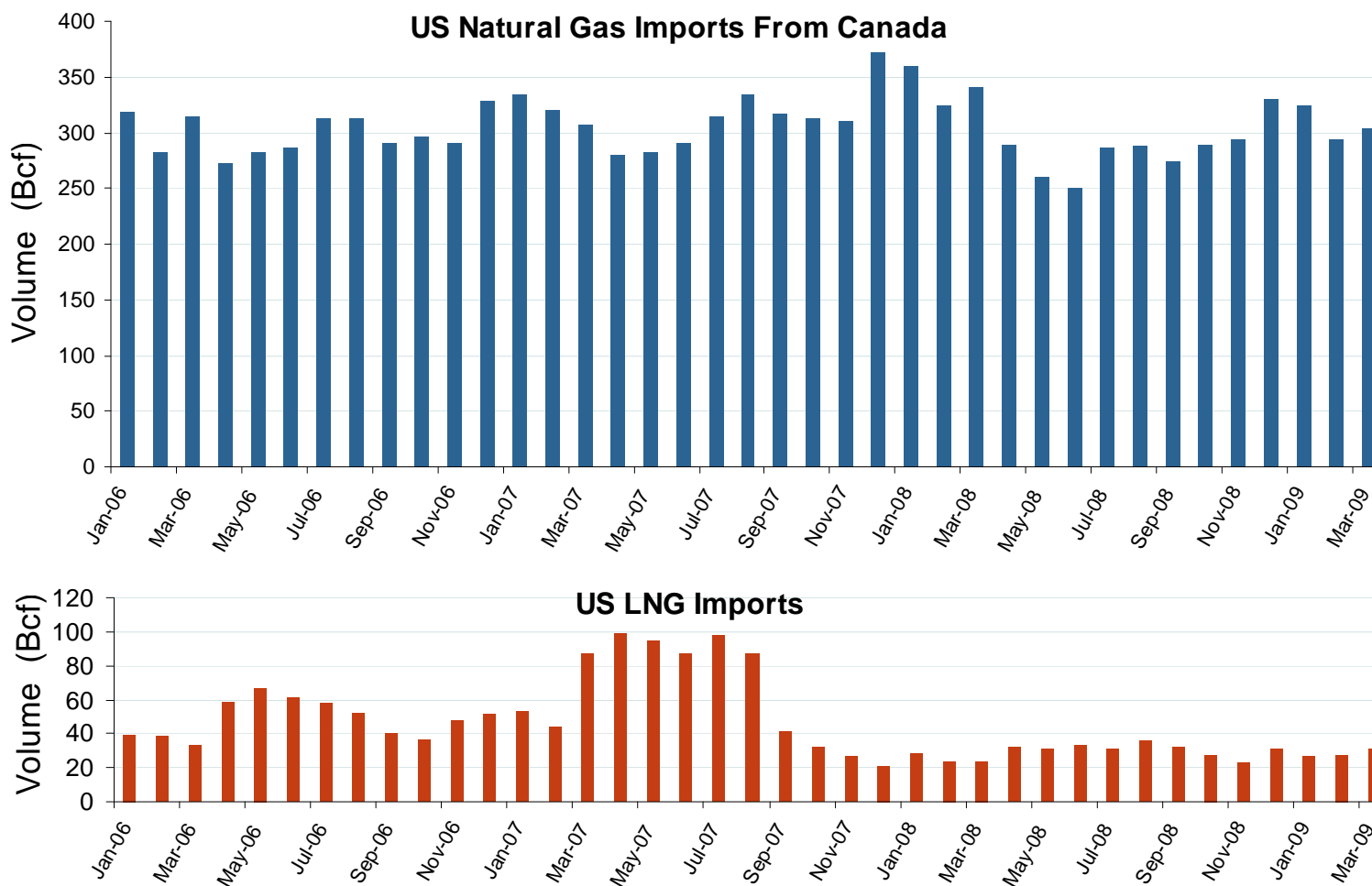


Source: Derived from EIA data.

Updated April 7, 2010

20017

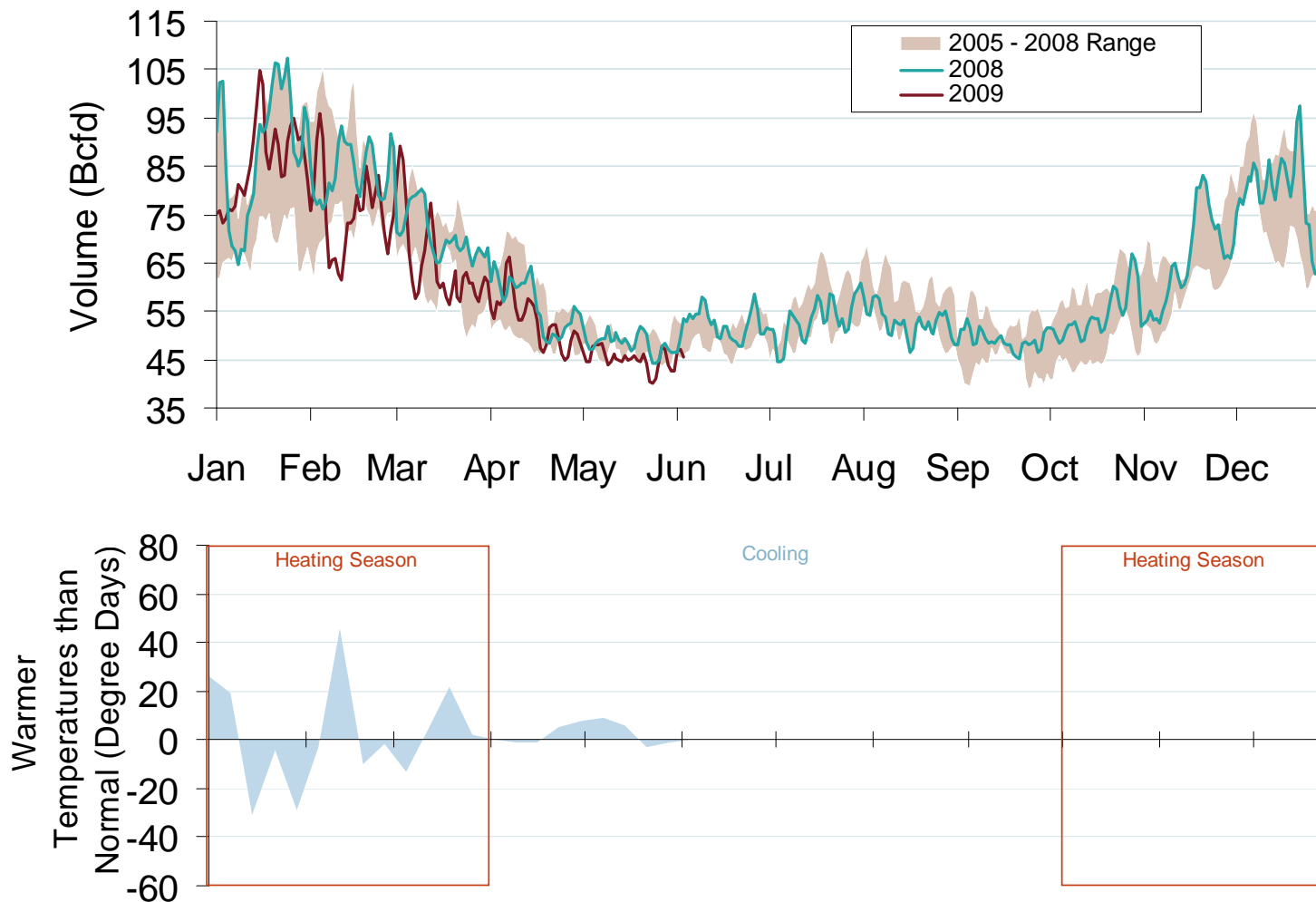
Canadian and LNG Natural Gas Imports



Source: EIA Natural Gas Monthly

Updated June 5, 2009

Total U.S. Natural Gas Demand (All Sectors) and Temperatures

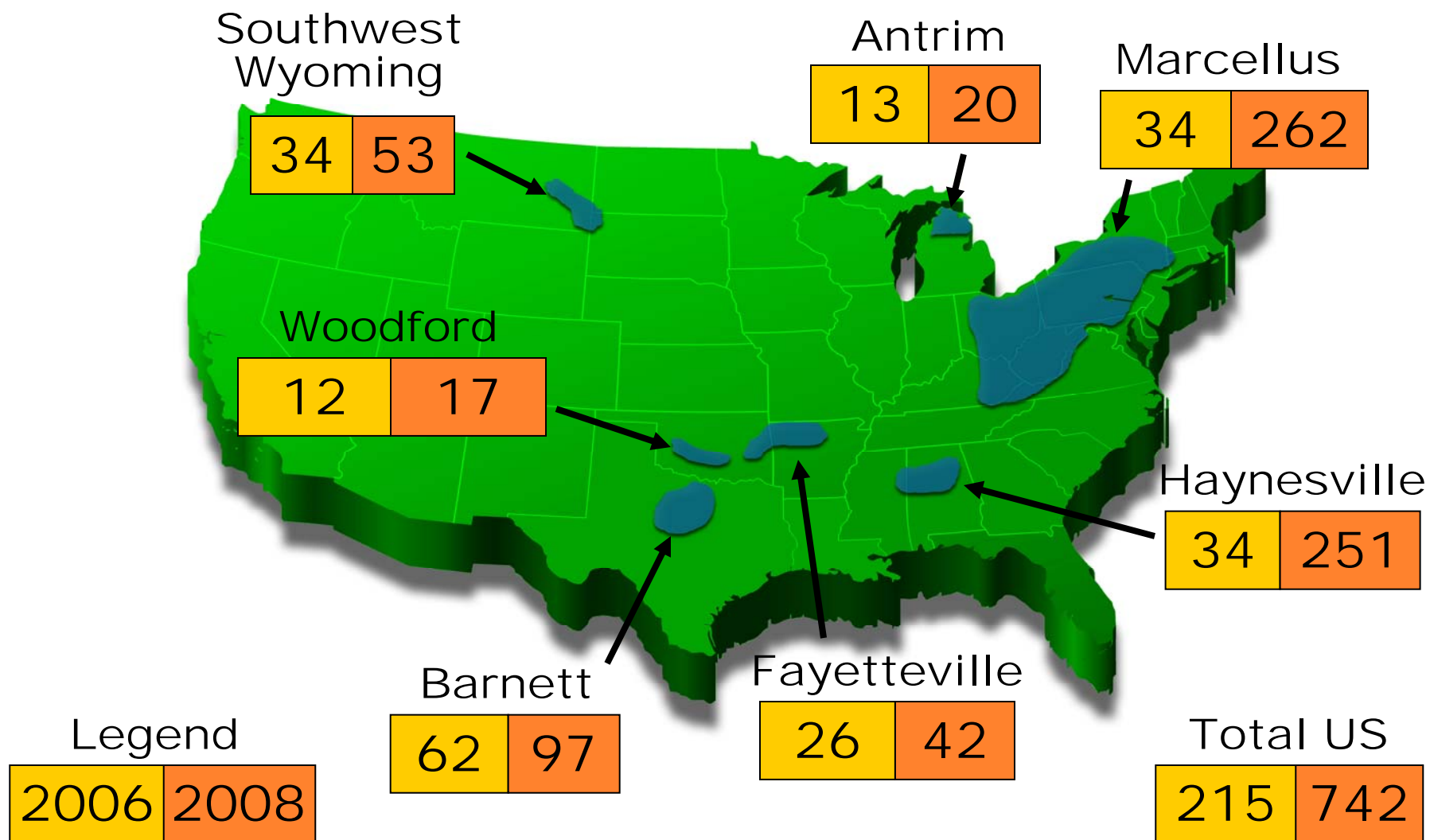


Source: Derived from *Bentek Energy* data.

Updated June 5, 2009

20009

Estimated Recoverable NG For Select Shale Basins (TCF)



Source: Derived From American Clean Skies Foundation

Updated November 18, 2008

20010